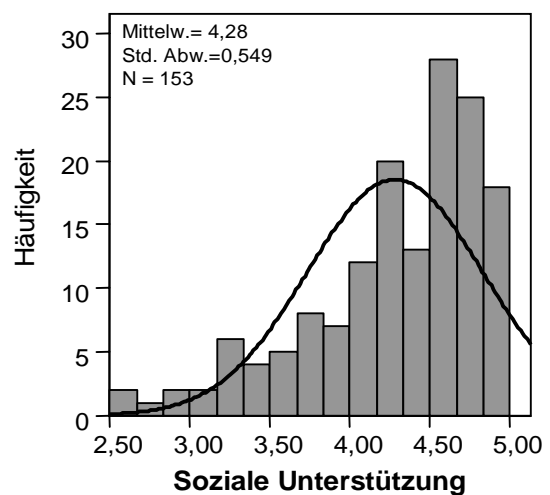
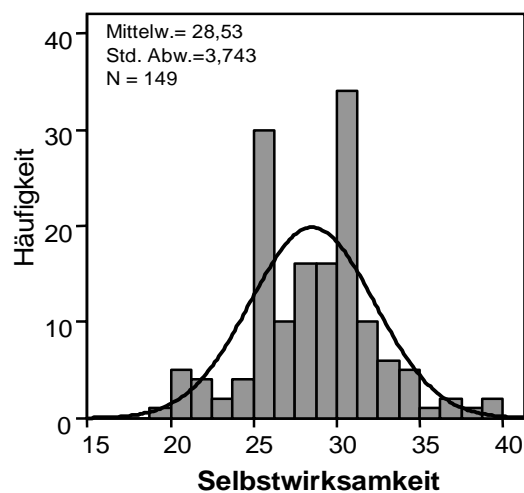
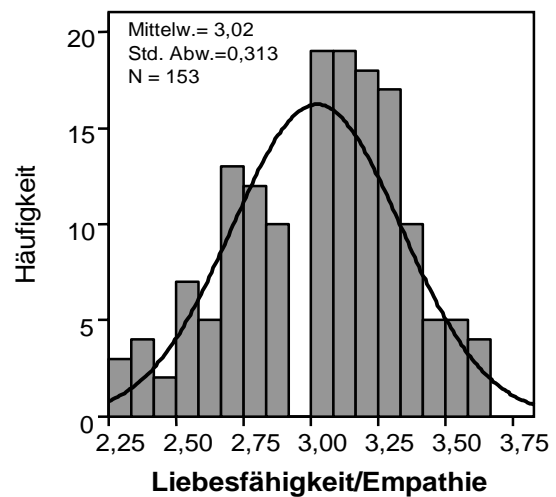
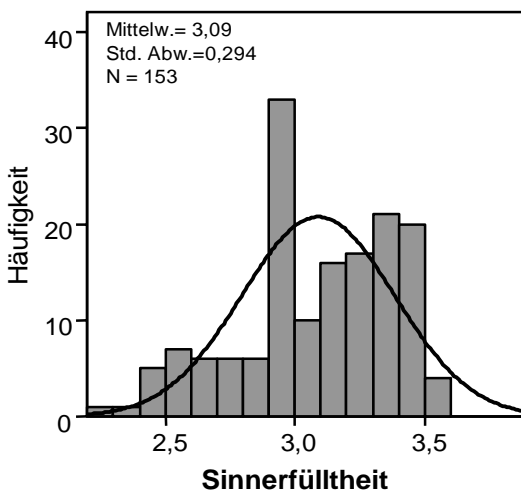
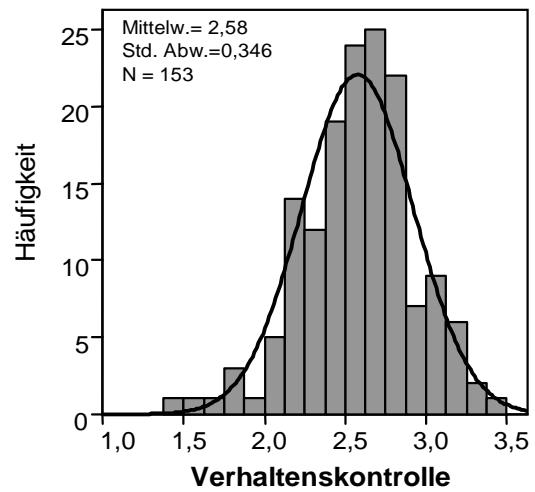
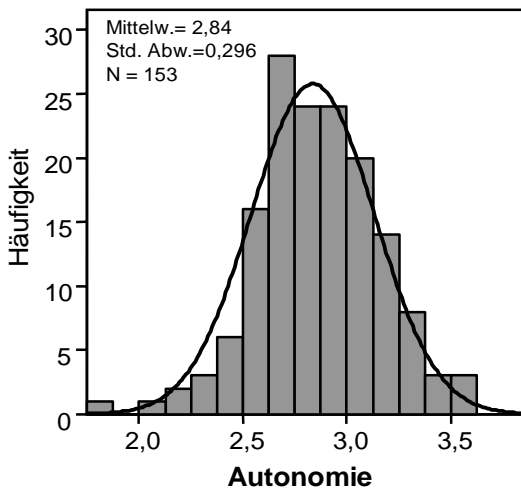


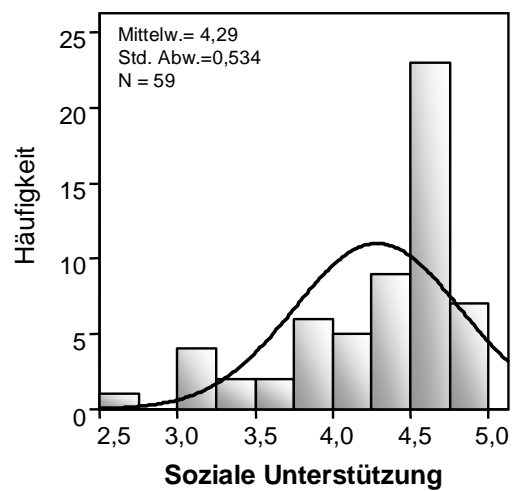
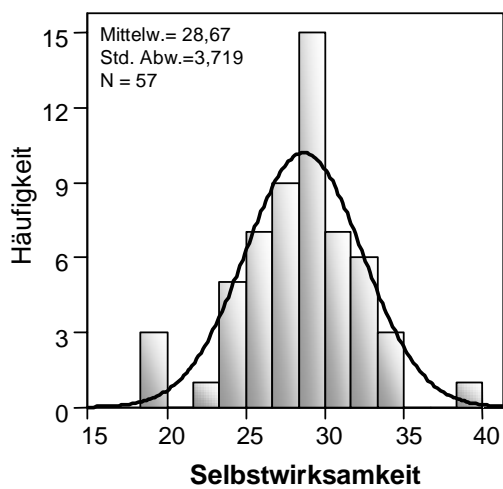
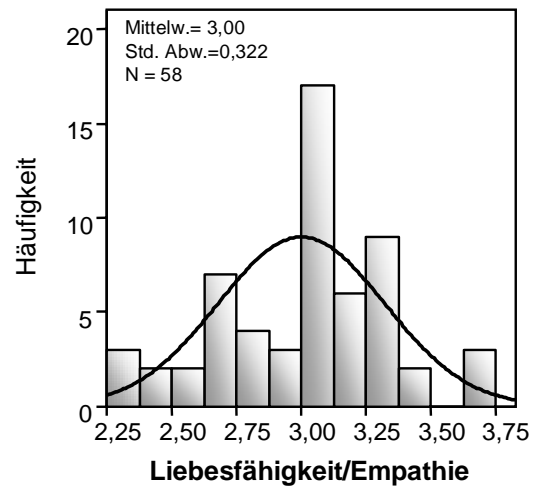
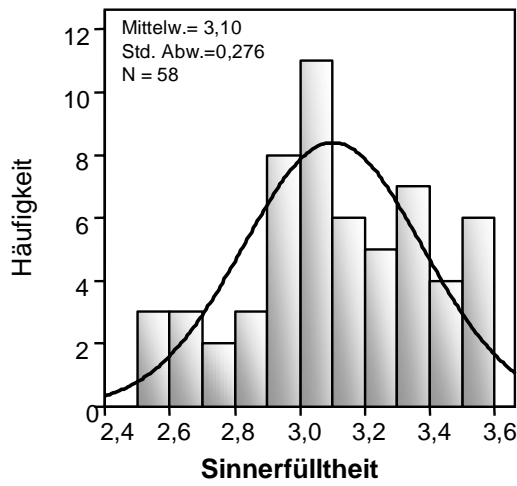
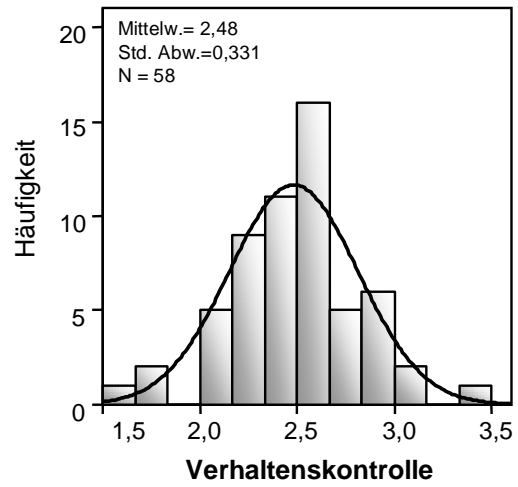
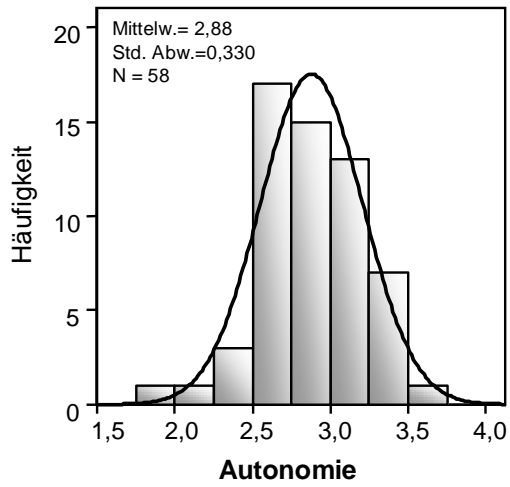


## II.1 Verteilung der Personalien und sozialen Ressourcen zum ersten Messzeitpunkt

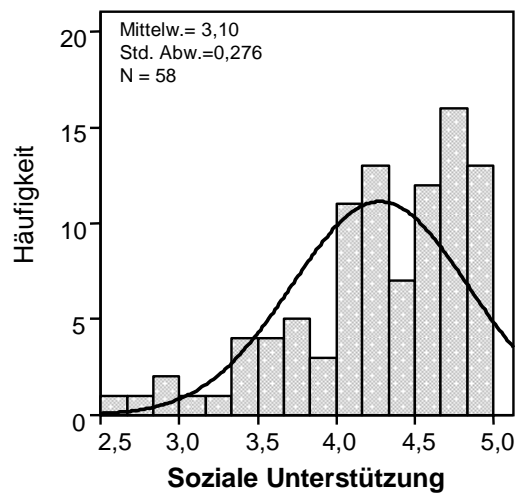
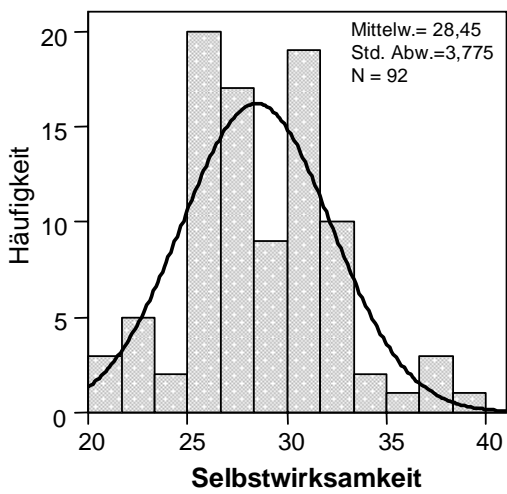
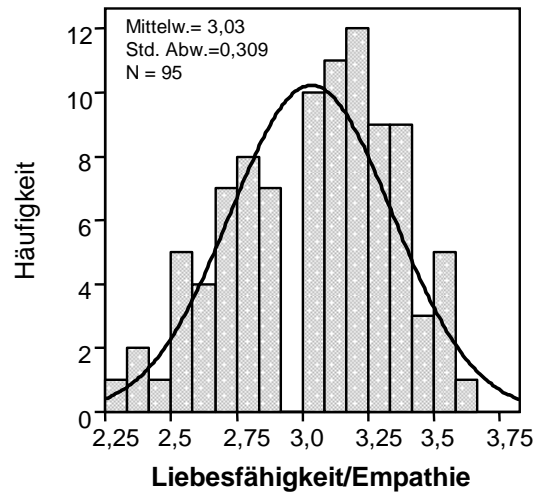
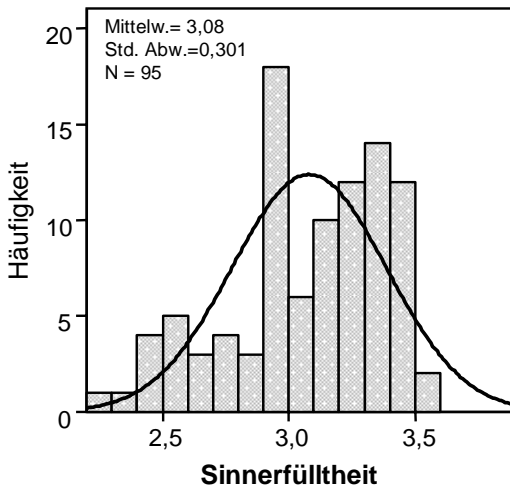
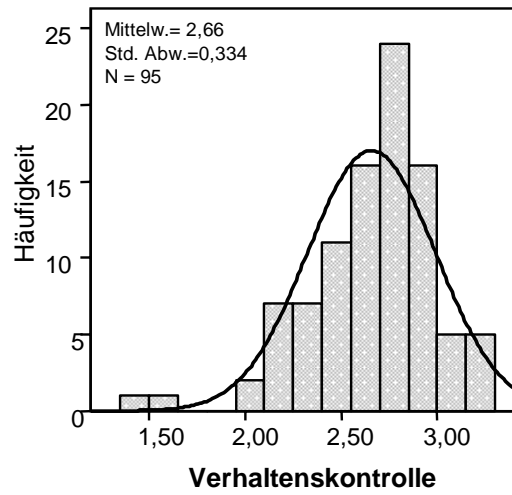
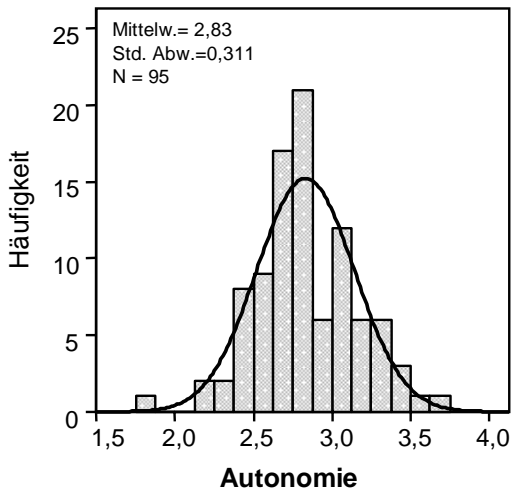
### II.1.1 Gesamtkollektiv



II.1.2 Reformstudiengang

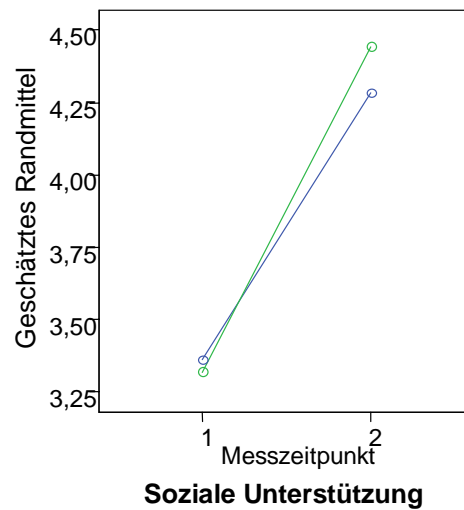
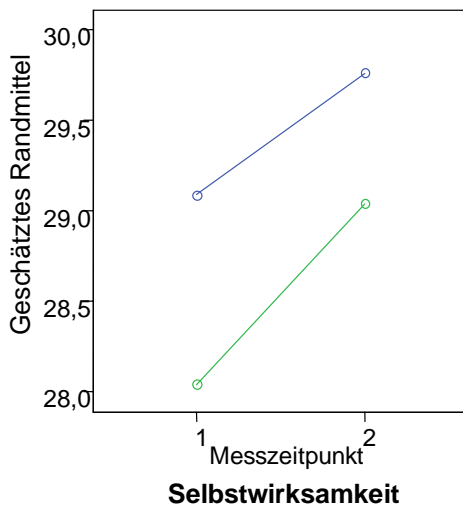
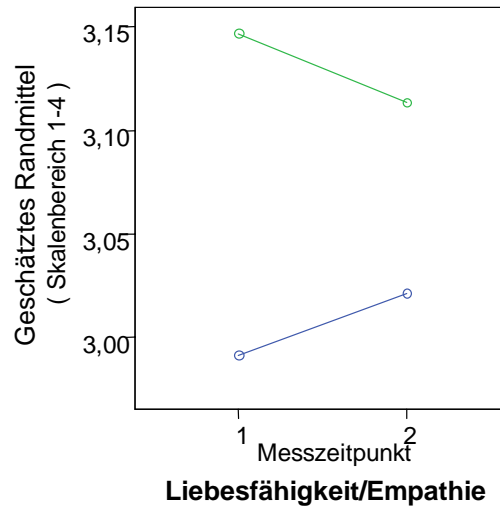
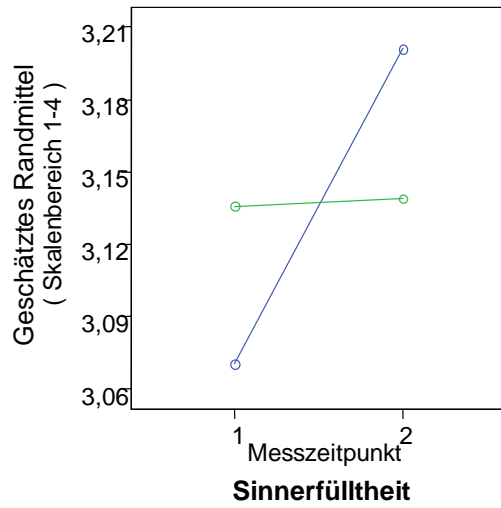
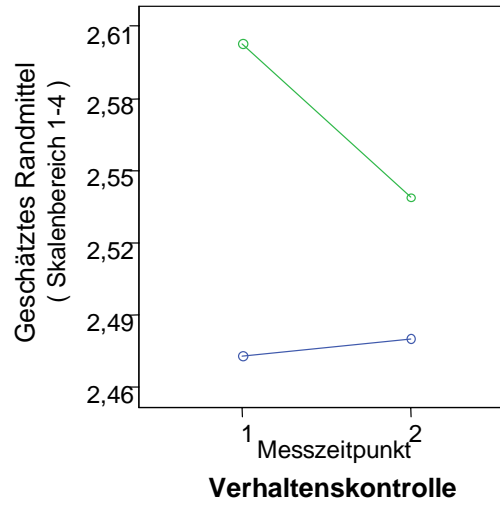
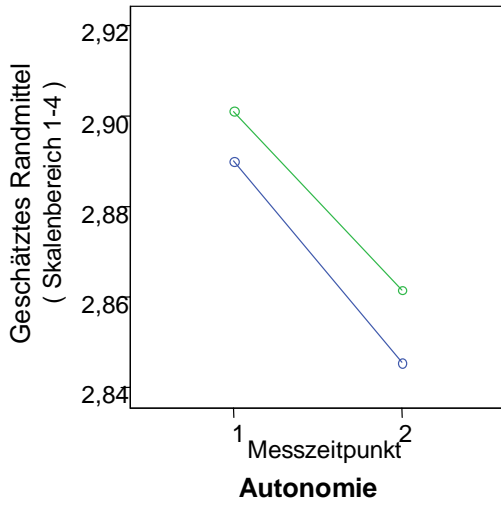


II.1.3 Regelstudiengang



II.2

Entwicklung der personalen und sozialen Ressourcen

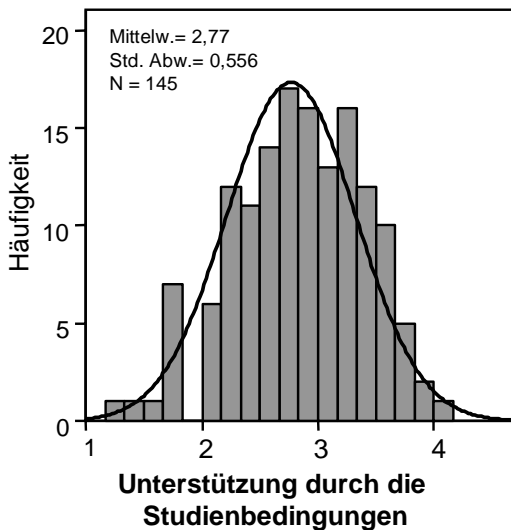
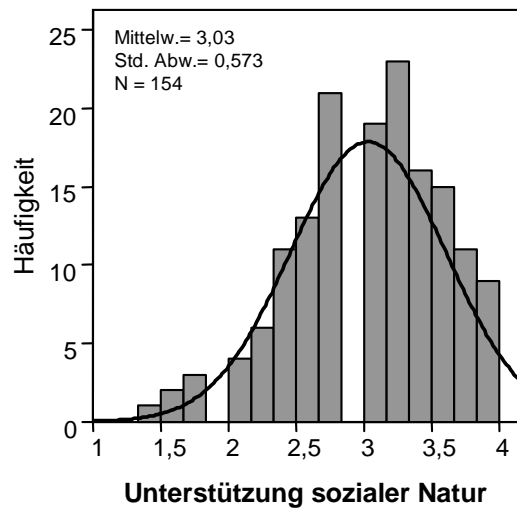
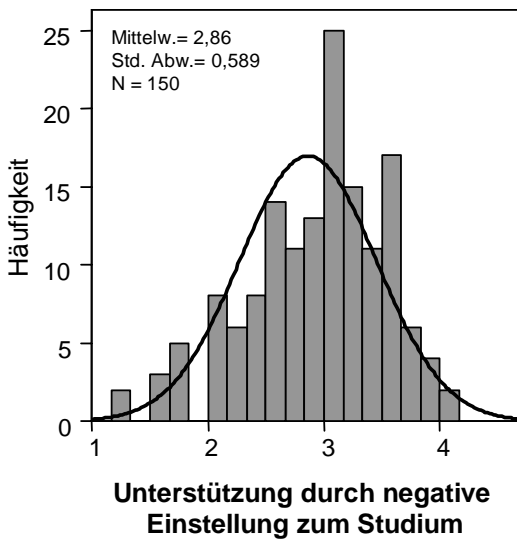
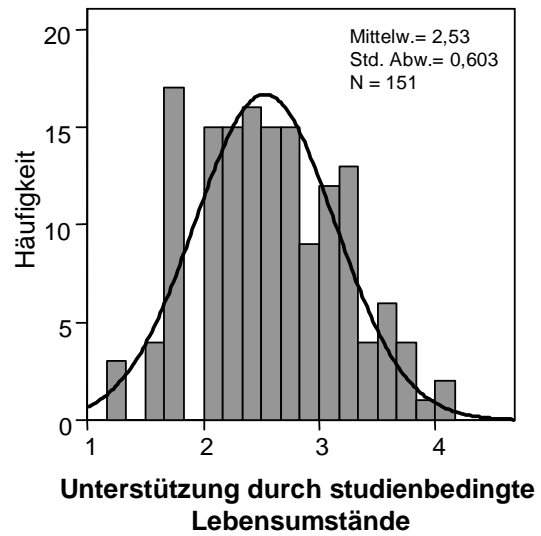
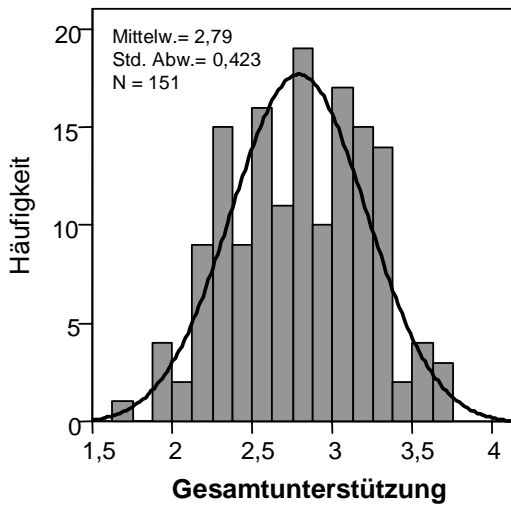


— Reformstudiengang — Regelstudiengang

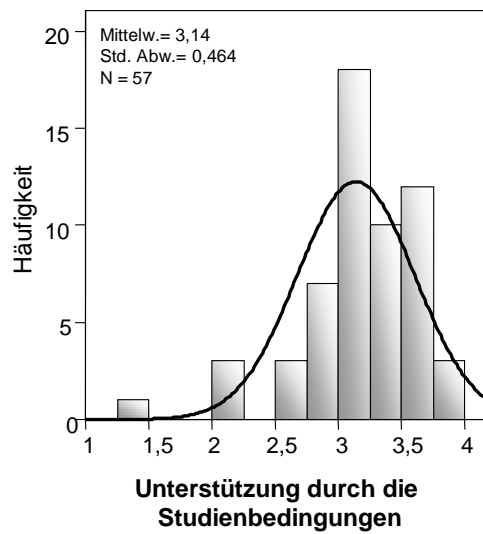
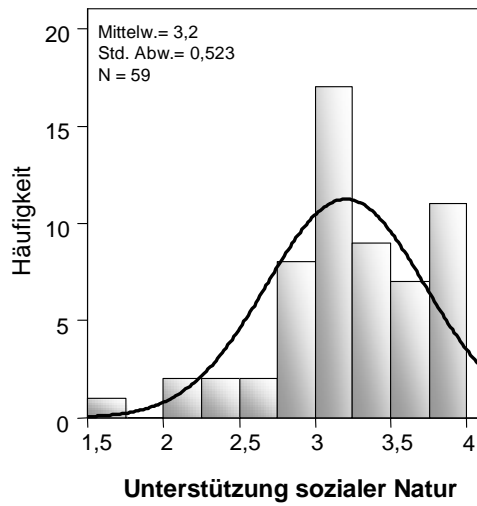
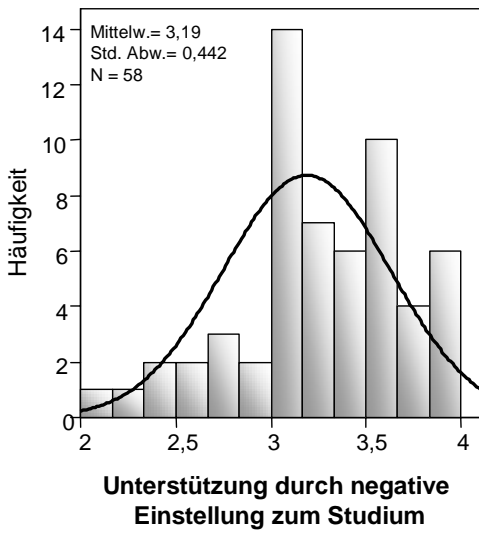
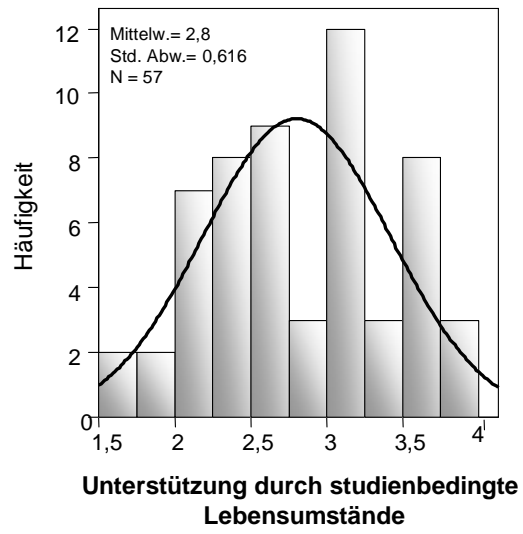
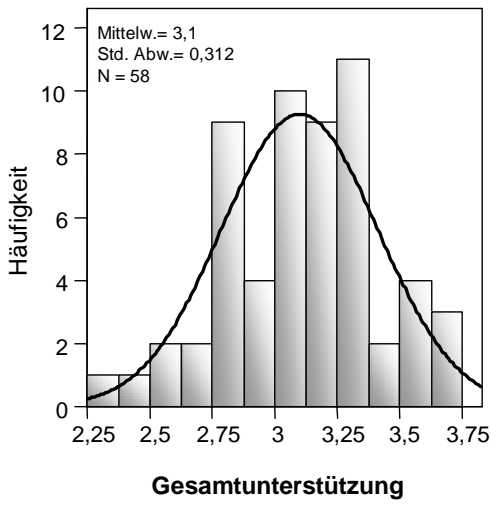
## II.3 Verteilung der Bachmannskalen

### II.3.1 Unterstützung

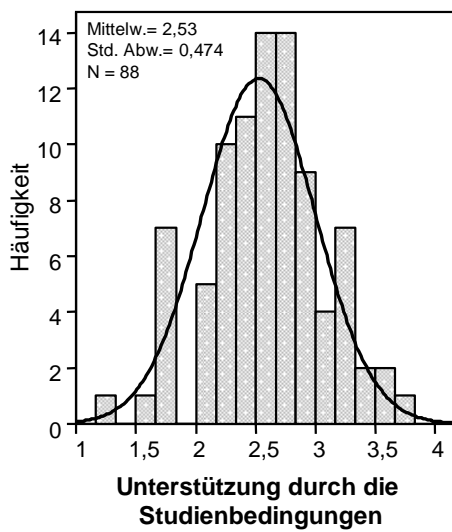
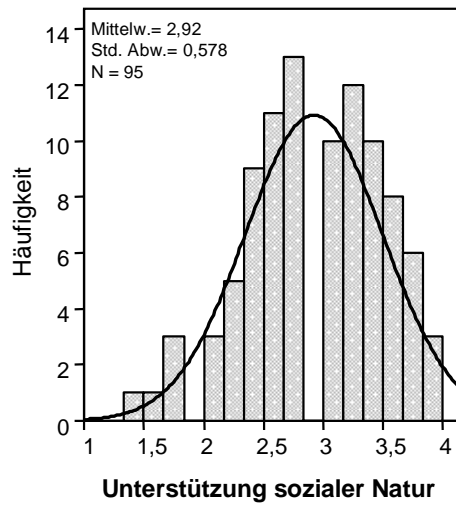
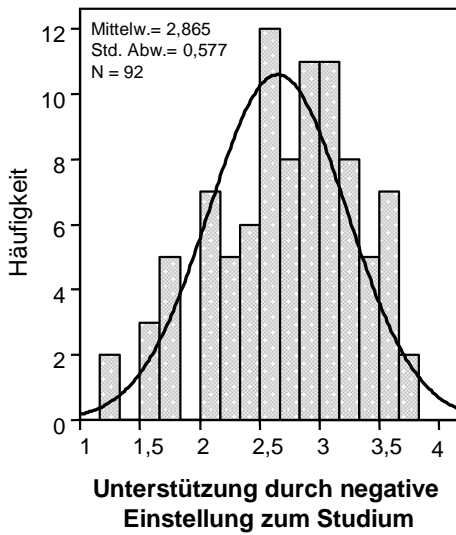
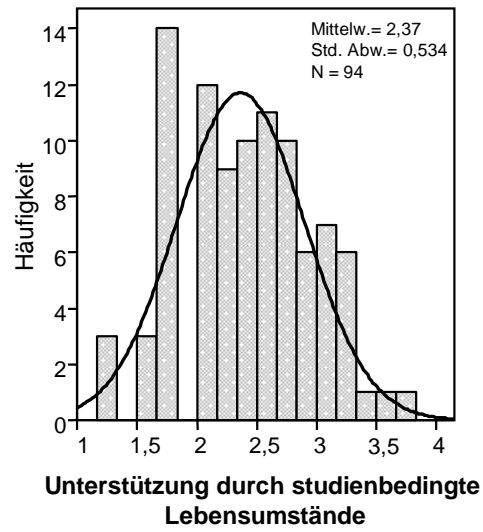
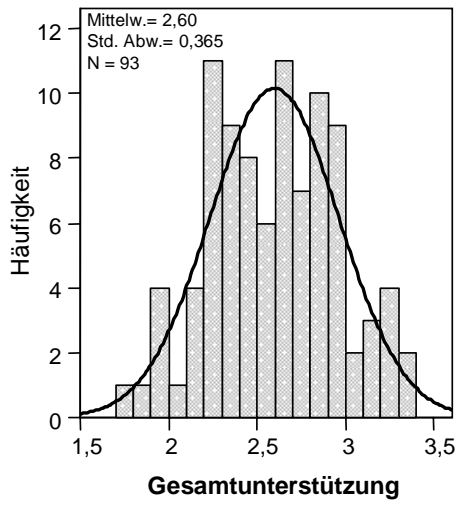
#### II.3.1.1 Gesamtkollektiv



**II.3.1.2 Reformstudiengang**



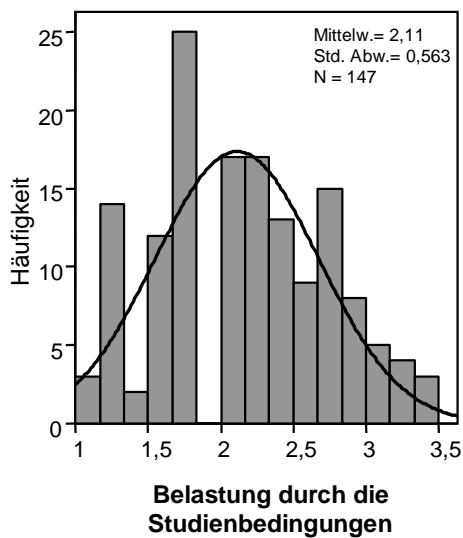
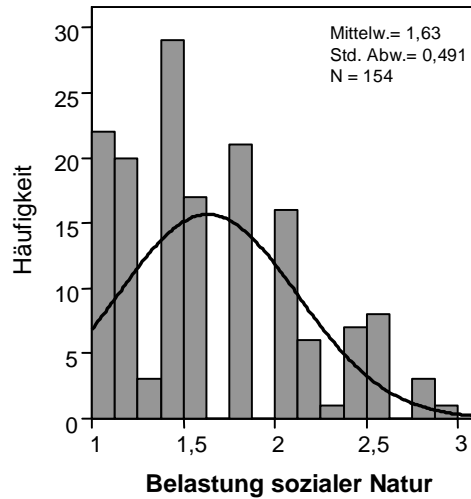
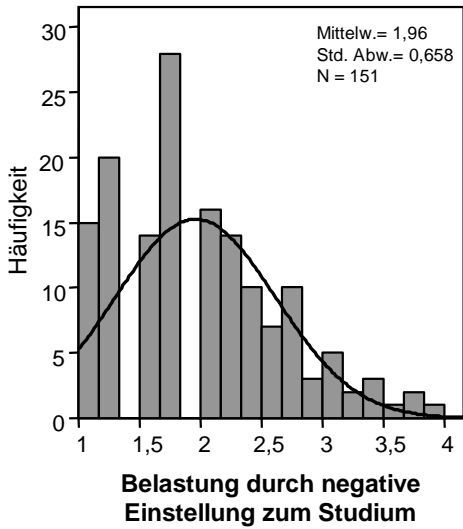
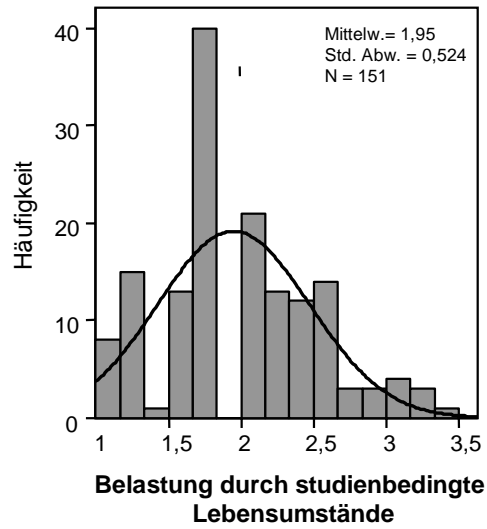
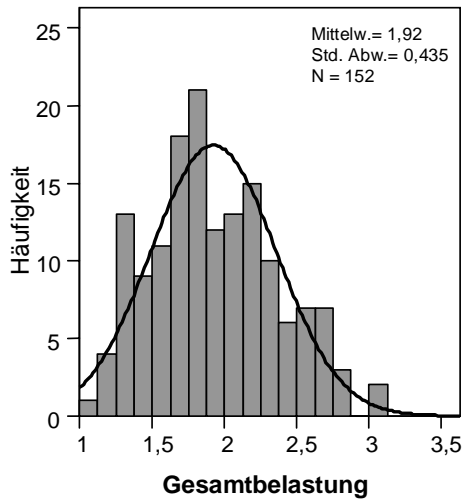
**II.3.1.3 Regelstudiengang**



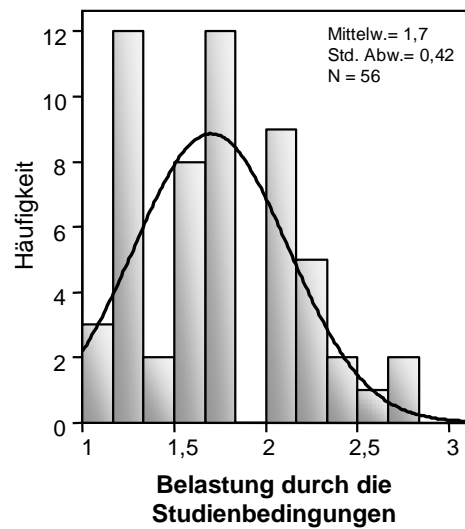
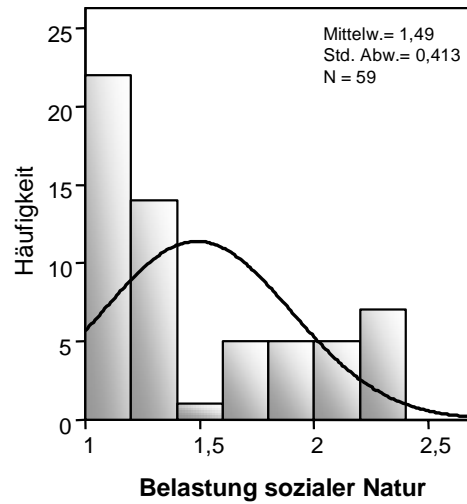
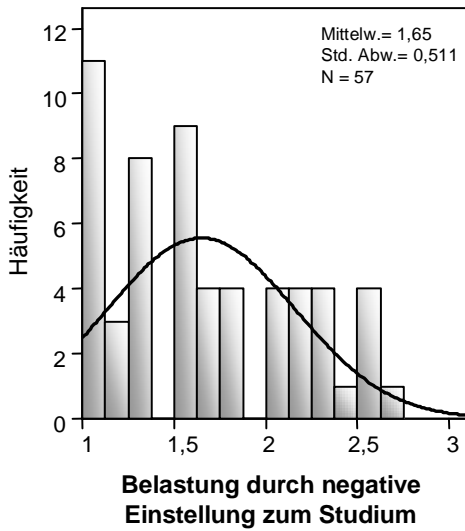
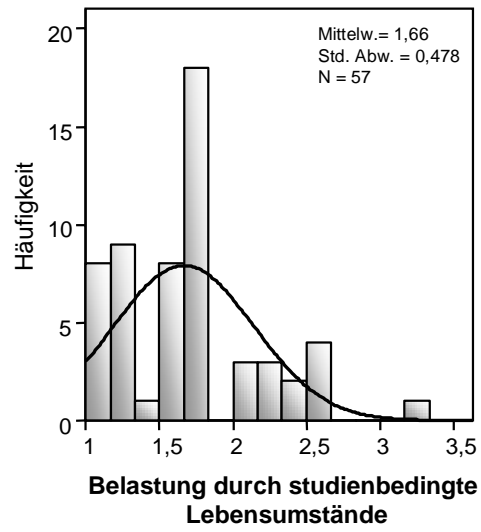
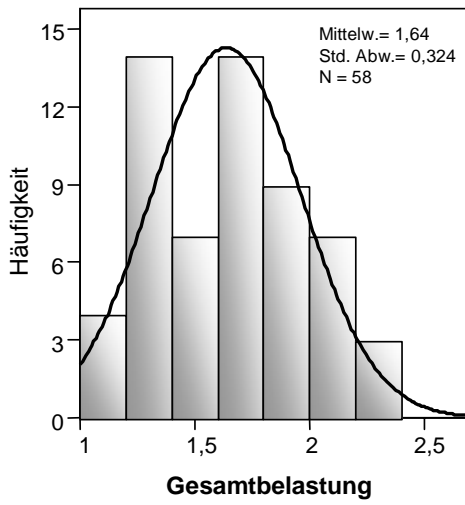


## II.3.2 Belastung

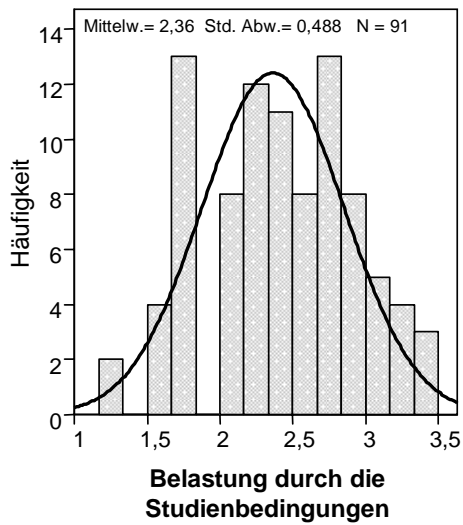
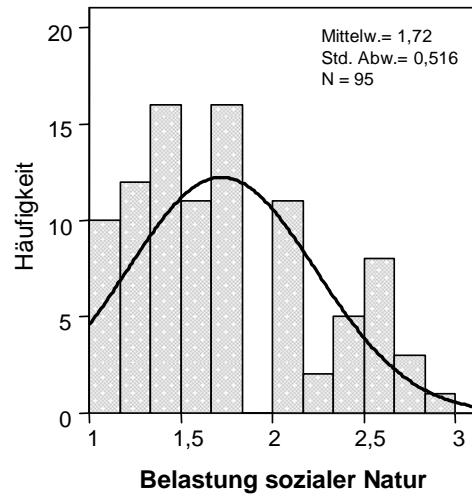
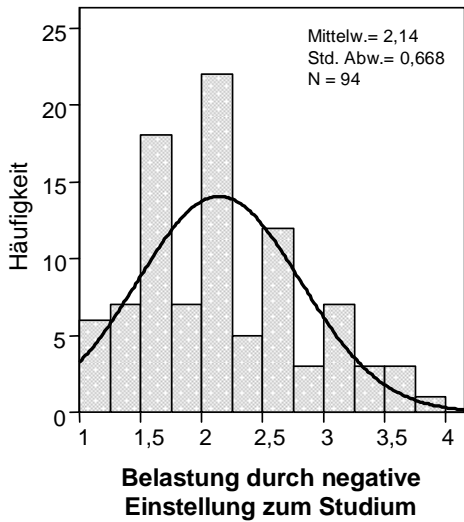
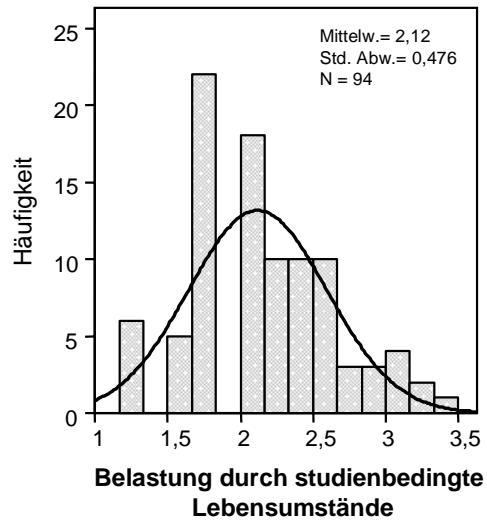
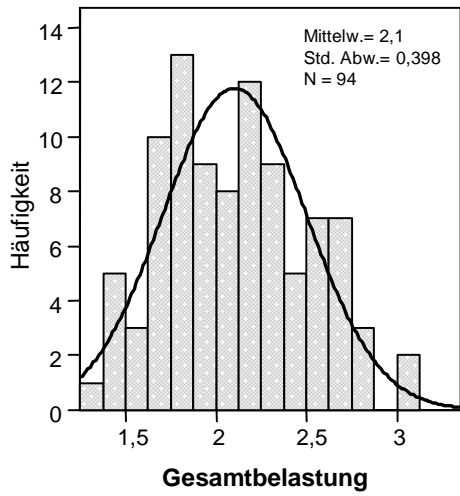
### II.3.2.1 Gesamtkollektiv



**II.3.2.2 Reformstudiengang**

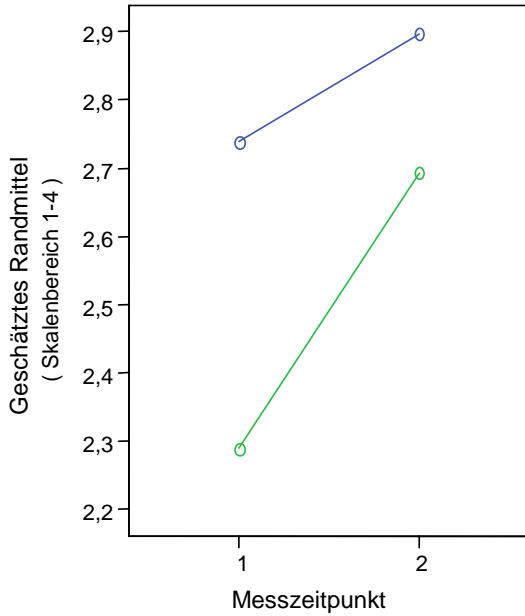


**II.3.2.3 Regelstudiengang**

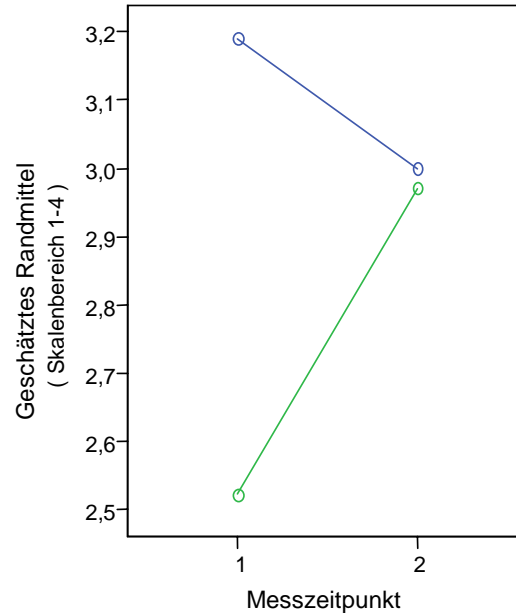


## II.4 Entwicklung innerhalb der Bachmannskalen

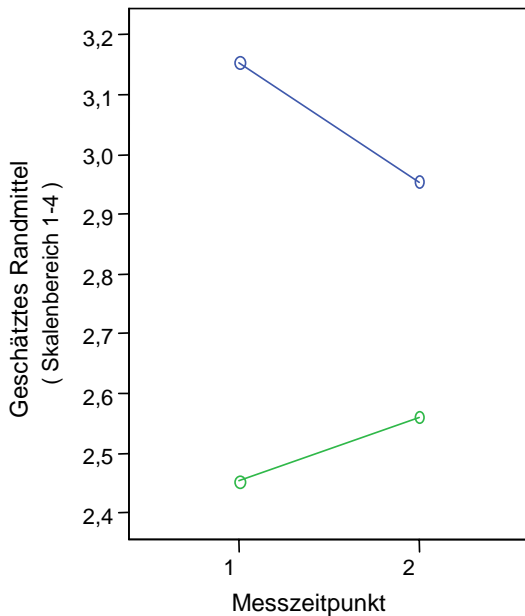
### II.4.1 Unterstützung



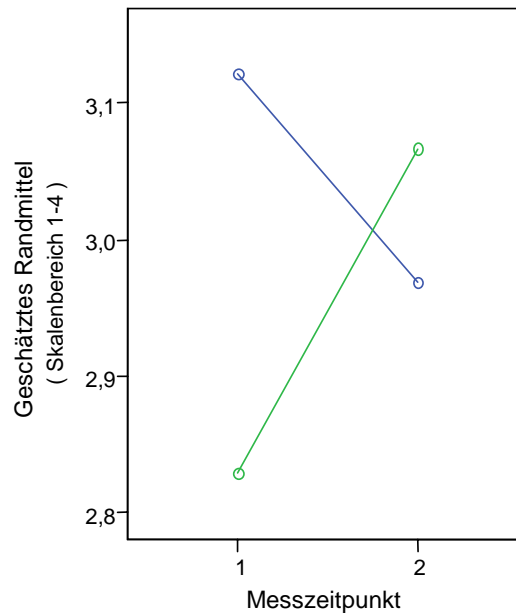
**Unterstützung durch studienbedingte Lebensumstände**



**Unterstützung durch negative Einstellung zum Studium**



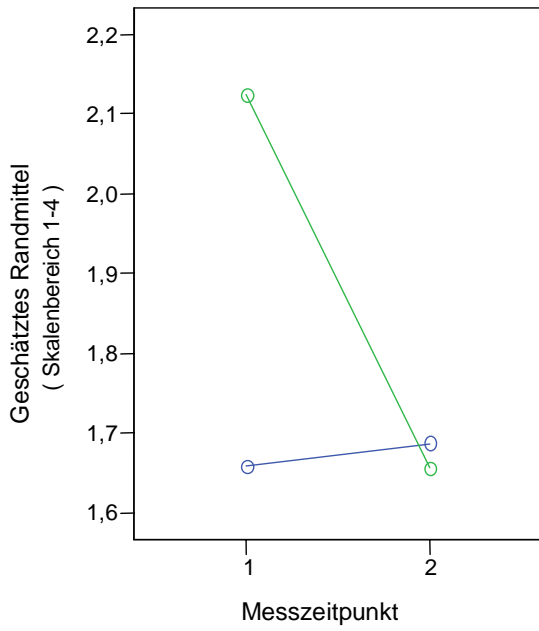
**Unterstützung durch die Studienbedingungen**



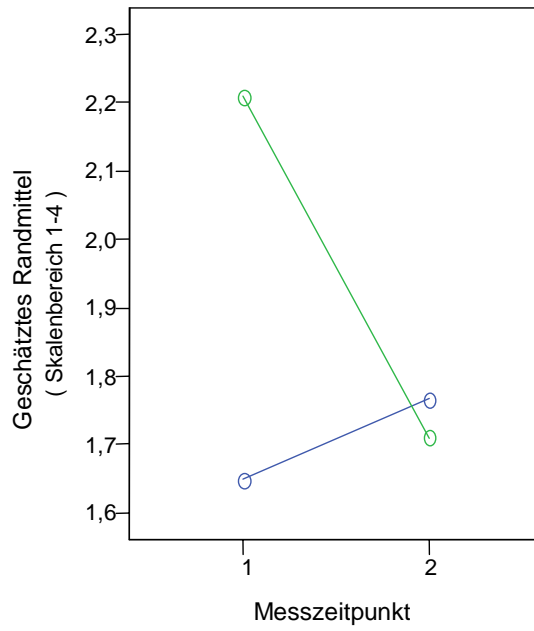
**Unterstützung sozialer Natur**

— Reformstudiengang — Regelstudiengang

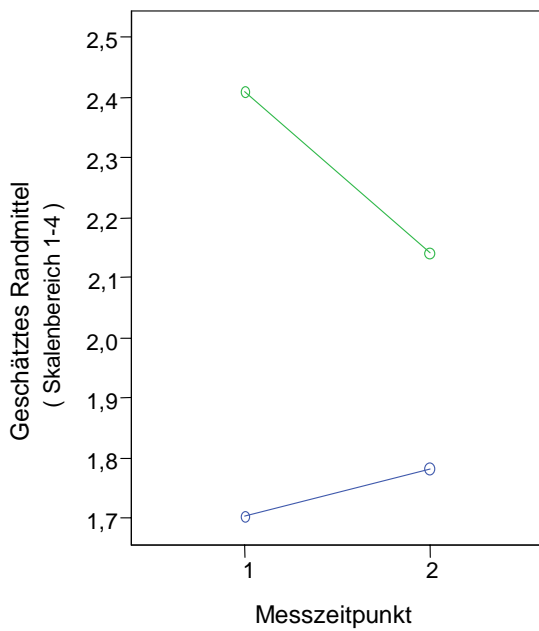
II.4.1 Belastung



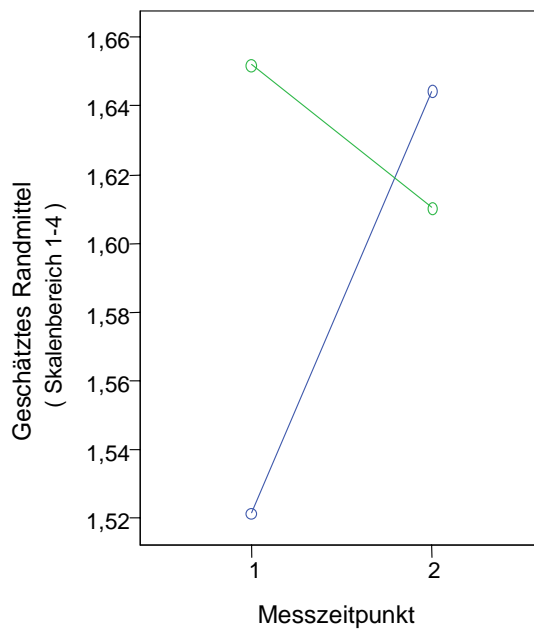
**Belastung durch studienbedingte Lebensumstände**



**Belastung durch negative Einstellung zum Studium**



**Belastung durch die Studienbedingungen**



**Belastung sozialer Natur**

— Reformstudiengang    — Regelstudiengang