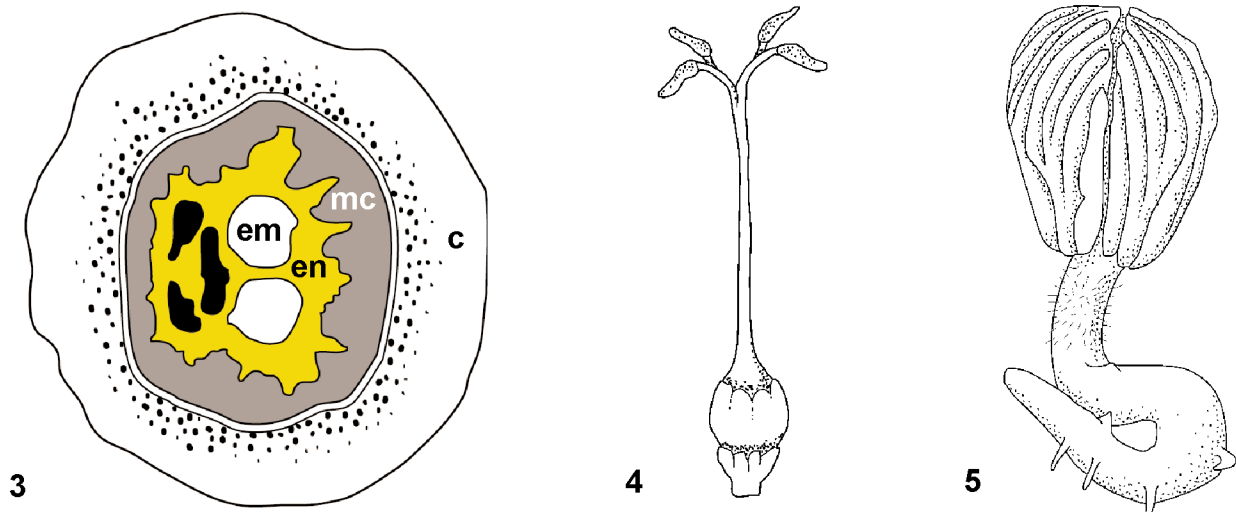


Figure 5-2: Alignment of selected *trnL* sequences of Cordiaceae. Note the unique 5 bp insertion in *Patagonula* and *Saccellium*.



Figs. 5-3 to 5-5: Apomorphies of Cordiaceae. 5-3: Fruit cross section of *C. sebestena* showing the undivided endocarp and the carnosy calyx. 5-4: Style with four stigmatic lobes (*C. alliodora*). 5-5: seedling with plicate cotyledons (*C. dentata*; 5-3 redrawn from TOMLINSON & FAWCETT 1980, 5-4 and 5-5 redrawn from GAVIRIA 1987). c: calyx; em: embryo; en: endocarp; mc: mesocarp.