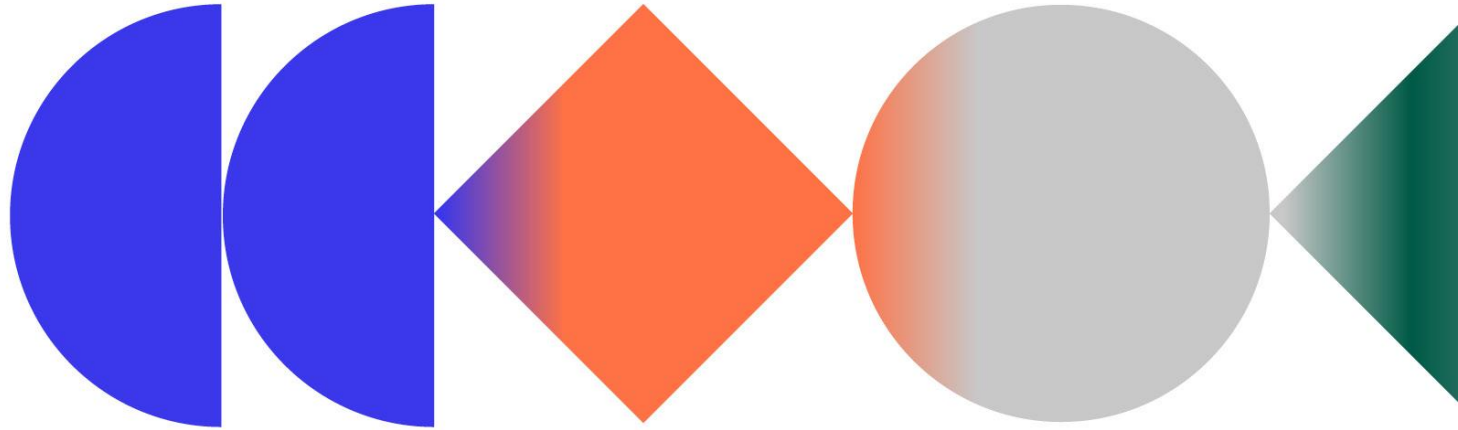


Horizon Europa 2023 matchmaking, One Health pilot



Matchmaking workshop 22nd September 2022



Agenda



Break-out rooms

13:00-13:30 Introductions, own research interest in relation to the topic

Main room

13:30-13:40 Welcome Prof. Alessandra Scagliarini, UNIBO, Chair of the Una Europa One Health SSC

13:40-13:45 Una Europa + Una.Resin, Elina Tonteri, Una.Resin project Manager

13:45-14:00 **Topic TBA:** Jean-Charles Cavitte, Research Policy Officer EC

14:00-14:15 Break

Break-out rooms

14:15-14:35 Special characteristic of the topic, Facilitators

14:35-15:50 Group discussion, On-line canvas with pre-questions (5min break, when suitable)

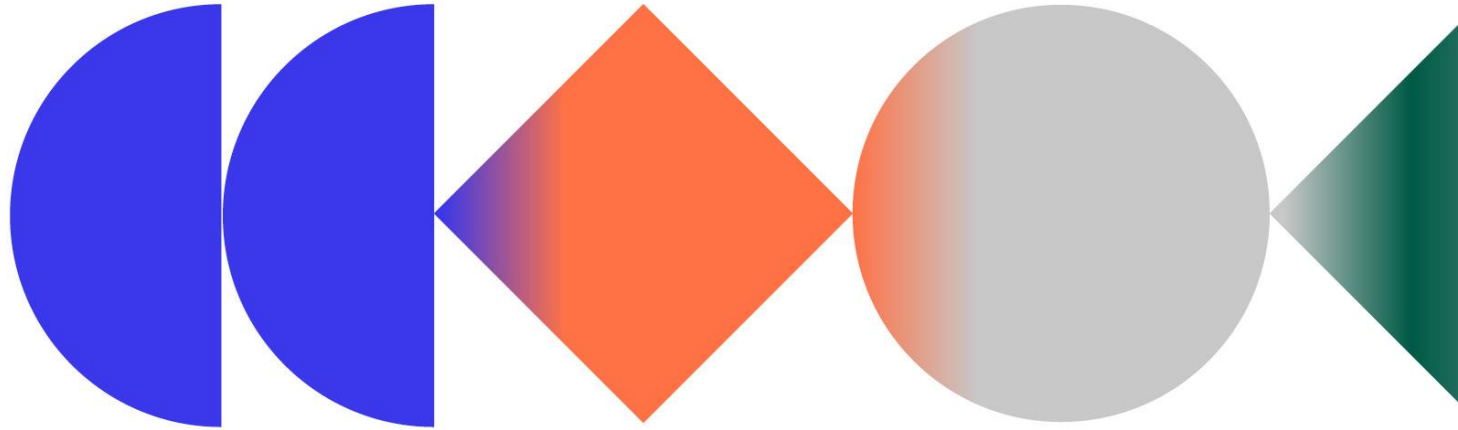
Main room

15:50-16:00 What next, Elina Tonteri, Una.Resin project manager

**Take a 15 minute break
back @14:15 CET!**



Please stay in Zoom

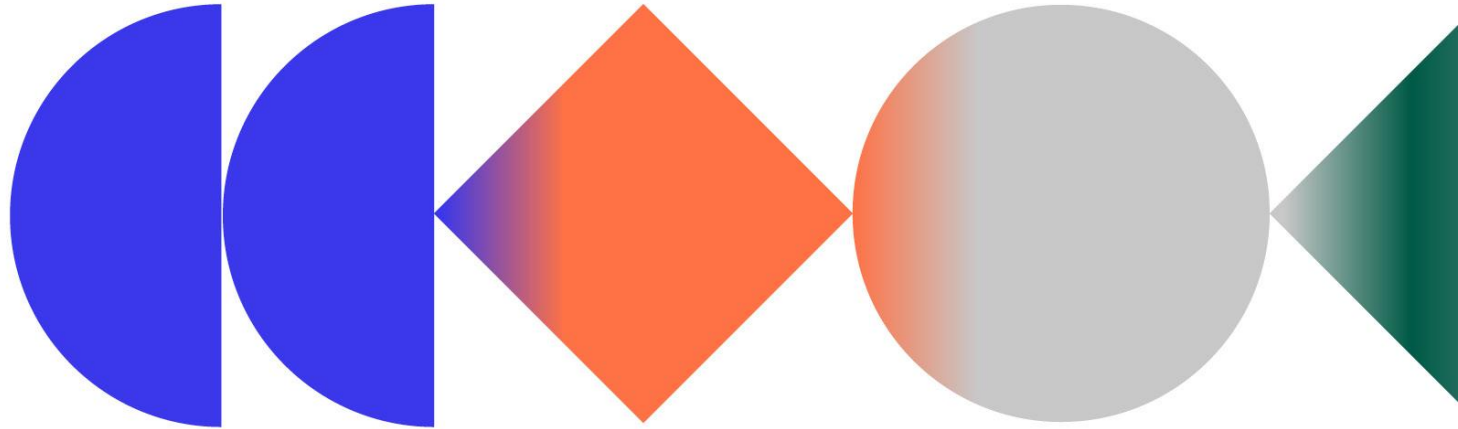


Group 1



HORIZON-HLTH-2023-ENVHLTH- 2.01: Planetary health: understanding the links between environmental degradation and health impacts

Chair: Prof. Tarja Sironen (UH)
Facilitator: Katja Ritari (UH)



Expected outcomes



- Learning about the Horizon Europe cluster call particularities and the call topics
- Drafting the core idea for a proposal / topic
- Appointing a coordinator and a core group for the proposal preparation / topic

Introduction to the call topic

Facilitator gives a 20 min brief to the call topic.





HORIZON-HLTH-2023-ENVHLTH-02-01: Planetary health: understanding the links between environmental degradation and health impacts

Presentation of the call and research and innovation requirements

Katja Ritari, Grant coach, University of Helsinki
katja.Ritari@helsinki.fi

General requirements



	RIA
Consortium	At least 3 independent legal entities each established in different MS or AC and additional eligibility conditions
Grant size	5-6 million EUR (overall budget is 30 mil EUR for the call)
Funding rate	100%
Project duration	Typically 3 years
Eligibility conditions	<p>In recognition of the opening of the US National Institutes of Health's programmes to European researchers, any legal entity established in the United States of America is eligible to receive Union funding.</p> <p>If projects use satellite-based earth observation, positioning, navigation and/or related timing data and services, beneficiaries must make use of Copernicus and/or Galileo/EGNOS (other data and services may additionally be used).</p>
Application	45 pages
Deadline	13 April 2023

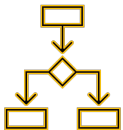


Policy priorities & background material

- European Green Deal
- the Key Strategic Orientation KSO-D ‘Creating a more resilient, inclusive and democratic European society’ of Horizon Europe’s Strategic Plan 2021-2024
- the Chemical Strategy for Sustainability
- the EU Adaptation Strategy, the EU Biodiversity Strategy 2030
- the 8th Environment Action Programme
- the EU Strategic Framework on Health and Safety at Work
- the WHO European Environment and Health Process (EHP)
- Helsinki declaration of 2020

Collaboration

Strong collaborations across sectors and with other Horizon Europe clusters dealing with issues such as agriculture, food, environment, climate, biodiversity, mobility, security, urban planning, social inclusion and gender will be needed to ensure that maximal societal benefits are reached.



Destination 2. Living and working in a health-promoting environment



Proposals for topics under this destination should set out **a credible pathway** to contributing to living and working in a health-promoting environment, and more specifically **to one or several of the following impacts**:

- **Policy-makers and regulators** are aware and well informed about environmental, socio-economic and occupational risk factors as well as health-promoting factors across society;
- Environmental, occupational, social, economic, fiscal and health policies and practices at the EU, national and regional level are sustainable and based on solid scientific evidence.
- The upstream determinants of disease - related to choices in energy generation, agricultural and food processing practices, industrial production, land use planning, built environment and construction - are known, understood and reduced;
- The health threats and burden resulting from hazardous chemicals, biodiversity degradation and air, water and soil pollution and contamination is reduced, so that the related number of deaths and illnesses is substantially reduced by 2030;
- Living and working environments in European cities and regions are healthier, more inclusive, safer, resilient and sustainable;
- The adaptive capacity and resilience of populations and health systems in Europe to climate and environmental change-related health risks is strengthened;
- Citizens' health and well-being is protected and promoted, and premature deaths, diseases and inequalities related to environmental pollution and degradation as well as unhealthy lifestyles are prevented;
- **Citizens** understand better complex environment and health issues, and effective measures to address them

Expected Outcomes

- Climate and environmental policies are supported with better knowledge on the Earth natural systems and human health interactions;
- Sustainable planetary health policies which foster co-benefits to human health and the health of ecosystems are supported with robust evidence;
- Cross sectorial and multidisciplinary scientific collaborations, including expertise in public health and One Health, are established;
- Public authorities rely on indicators about the impacts on human health of changes or degradation of natural systems to support adaptation and mitigation strategies to natural hazards;
- Policy-makers have better tools to improve the predictive capability and preparedness as well as to envision prevention strategies to deal with the impacts on human health of changes or degradation of ecosystems;
- Citizens are engaged and informed about the impact of natural systems' degradation on human health and behaviours aiming at the conservation of ecosystems are promoted.
- In order to optimise synergies and increase the impact of the projects, all projects selected for funding from this topic will form a cluster and be required to participate in common networking and joint activities .

Scope

- Applicants are invited to submit proposals **providing actionable evidence for policy-makers to take preventive actions** to protect the human health and wellbeing **by exploring the links between human health and environmental degradation in an integrated and comprehensive manner.**
- **Provide strengthened evidence for health and wellbeing impacts of planetary changes, considering a systems thinking framework or a fragmentary approach focused on the impacts of climate change and biodiversity loss on human health** (for biodiversity loss, proposals should not focus on the connection between the biodiversity loss and ecosystem degradation with the prevention of zoonotic emerging diseases since this topic will be covered by CL6-2023-BIODIV: Interlinkages between biodiversity loss and degradation of ecosystems and the emergence of zoonotic diseases);
- **Provide improved understanding and modelling of human–ecological systems interactions and ecosystem-mediated effects on human health and well-being**, including the attribution of health outcomes to environmental change;
- **Provide a methodology to identify and prioritise threats for public health caused by environmental degradation, with a view to improving preparedness of health systems to these threats, through structured processes that move from evidence to recommendations and decisions;**
- **Investigation how infections agents that might have the capacity to adapt to other host species can spread via the environment**, and how this type of insight might lead to enhanced monitoring strategies;

- Lay the foundations for integrated surveillance systems considering already established monitoring systems (e.g. systematic wastewater monitoring) and using available and newly collected health, socioeconomic, and environmental data for defined populations over longer time periods. This would provide early detection of emerging disease outbreaks (e.g. zoonotic diseases, potential permafrost release of new and old pathogens) or changes in nutrition and non-communicable disease burden and support the assessment of the integrated health, environmental, and socioeconomic effect of policies and technologies
- Explore strategies to reduce environmental damage and harmful emissions (e.g. air pollution) including assessment of health co-benefits through engagement with relevant HE partnerships and missions;
- Explore implications of planetary health for health systems and public health and identify opportunities to mitigate adverse health impacts of environmental degradation;
- Improve risk communication to policy makers, public authorities, industry and the public and support evidence-informed decisions by policy makers, by increasing capacity to do systematic reviews and provide rigorous policy briefs;

- **Advance knowledge and actions to reduce the burden of non-communicable diseases** while reducing the environmental pressure in areas like nutrition, physical activity, and mobility, and **to assess the integrated health, environmental, and socioeconomic effect of those actions (i.e. behaviour change interventions, policies or new technologies)**;
- **Provide better understanding on adaptation to climate and other environmental changes to protect human health**, including the interactions between different planetary boundaries and the need to integrate adaptation and mitigation strategies;
- **Improved health impact assessment approaches** accounting for environmental externalities and estimating the cost and benefits of interventions versus no action.
- This topic requires the effective contribution of social sciences and humanities (SSH) disciplines and the involvement of SSH experts, institutions as well as the inclusion of relevant SSH expertise, in order to produce meaningful and significant effects enhancing the societal impact of the related research activities.

Multi-actor approach

- Aiming to make the R&I process and its **outcomes more demand-driven, reliable, and relevant to society**
- Genuine and sufficient **involvement of a targeted diversity of actors** during the whole course of the project
- End-users and practitioners are to be involved, not as a study object, but to use their practical and local knowledge and/or entrepreneurial skills to develop solutions and create 'co-ownership' of results for (end-) users and practitioners.

The project must demonstrate:

- ✓ How the objectives and planning are **targeting the needs, problems, and opportunities** of the end-users of the project results
- ✓ How the concept and the **composition of the consortium reflect a balanced choice of key relevant actors** who have complementary types of knowledge and will ensure broad implementation of project results useful in practice
- ✓ How the project intends to **include existing practices and tacit knowledge** in scientific work
- ✓ How the project will **facilitate the multi-actor engagement process**
- ✓ How the project will **complement existing research and best practices** and **will result in practical knowledge, approaches or tools, made easily understandable and accessible**

Award criteria



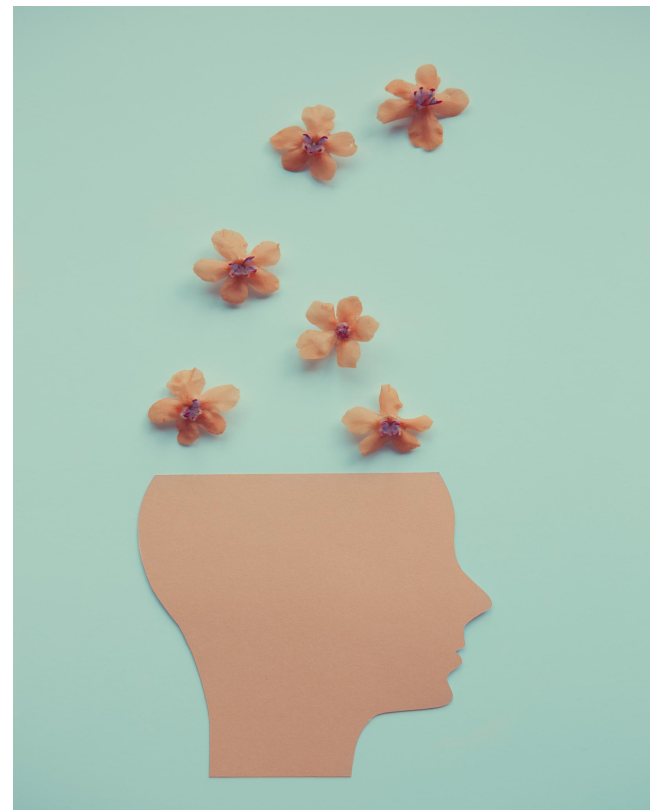
	Excellence	Impact	Implementation
RIA	<ul style="list-style-type: none">- Clarity and pertinence of the project's objectives, and the extent to which the proposed work is ambitious and goes beyond the state of the art.- Soundness of the proposed methodology, including the underlying concepts, models, assumptions, inter-disciplinary approaches, appropriate consideration of the gender dimension in research and innovation content, and the quality of open science practices, including sharing and management of research outputs and engagement of citizens, civil society and end-users where appropriate.	<ul style="list-style-type: none">- Credibility of the pathways to achieve the expected outcomes and impacts specified in the work programme, and the likely scale and significance of the contributions from the project.- Suitability and quality of the measures to maximise expected outcomes and impacts, as set out in the dissemination and exploitation plan, including communication activities	<ul style="list-style-type: none">- Quality and effectiveness of the work plan, assessment of risks, and appropriateness of the effort assigned to work packages, and the resources overall.- Capacity and role of each participant, and the extent to which the consortium as a whole brings together the necessary expertise.

Proposals aspects are assessed to the extent that the proposed work is within the scope of the work programme topic

Things to have in mind...



- You need to demonstrate that **your idea is ambitious** and **goes beyond the state of the art**
- Be aware of the **policy background**: relevant EU policy & priorities
- Impact-driven Framework programme = New approach to impact: **Key Impacts Pathways (KIPs) – steps to know what impact is expected**
 - ✓ *Scientific, Societal and Economic impact*
- Your scientific methodology must consider **interdisciplinary, gender dimensions and open sciences practices**
- **Gender Equality Plan** covering minimum process-related requirements
- **Open Science** practices assessed as part of the scientific methodology in the excellence criterion





Thank you for your attention

Let's get the discussion started!

Task 1, focus of the proposal



The chair will present the the initial ideas as a focus of the proposal. After that discuss together, where would you like to take the idea. You have 25 minutes of time.

Please use the on-line canvas on the next slide to document your discussion. You can decide together, who will keep the notes.

Expected outcome: Initial decision on the proposal focus. This will help the coordinator and the participants to decide, whether the proposal seems relevant for them. Focus is needed also for the next task, where you will be thinking about the experties and other elements needed.

Tip! If you are running out of space in your canvas, reduce the font size or add text to the notes section below the canvas

You can ask help from the technical hosts by pressing the “Ask for help” button on the bottom right corner of the screen.

Task 1, focus of the proposal



Add the discussion notes here:

Text

Task 2



In this task you will identify the strengths and gaps of the expertise needed for a strong proposal with the chosen focus. Think openly how to create new multidisciplinary perspectives. Also, consider inclusivity and equality. You have 25 minutes of time.

Please use the on-line canvas on the next slide to document your discussion. There are guiding questions provided on the canvas to help you with the discussion.

Expected outcome: Initial view to needed capabilities, infrastructures and partners. This helps to start building links to existing and needed new partners.

Tip! If you are running out of space in your canvas, reduce the font size or add text to the notes section below the canvas

What kind of expertise are needed? Which profiles are there already? Which are missing?

Type here the answers:

Who would be the essential partners outside of Una Europa and outside academia?

Type here the answers:

Task 3, summary of the discussions



You have 10 minutes for this task.

List here the coordinator and the core group responsible for the preparation:

What feels clear now? What is unclear?

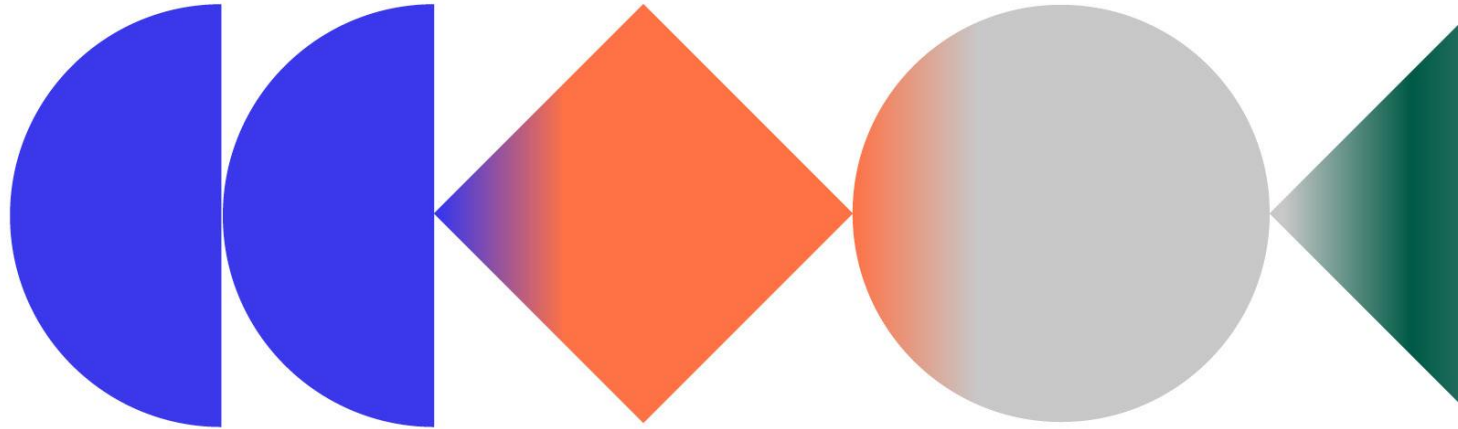
Group 2



HORIZON-CL6-2023-BIODIV: Interlinkages between biodiversity loss and degradation of ecosystems and the emergence of zoonotic diseases

Chair: Prof Jan Paeshuyse (KU Leuven)

Facilitator: Kristof Vlaeminck (Una Europa Vzw)



Expected outcomes



- Learning about the Horizon Europe cluster call particularities and the call topics
- Drafting the core idea for a proposal / topic
- Appointing a coordinator and a core group for the proposal preparation / topic

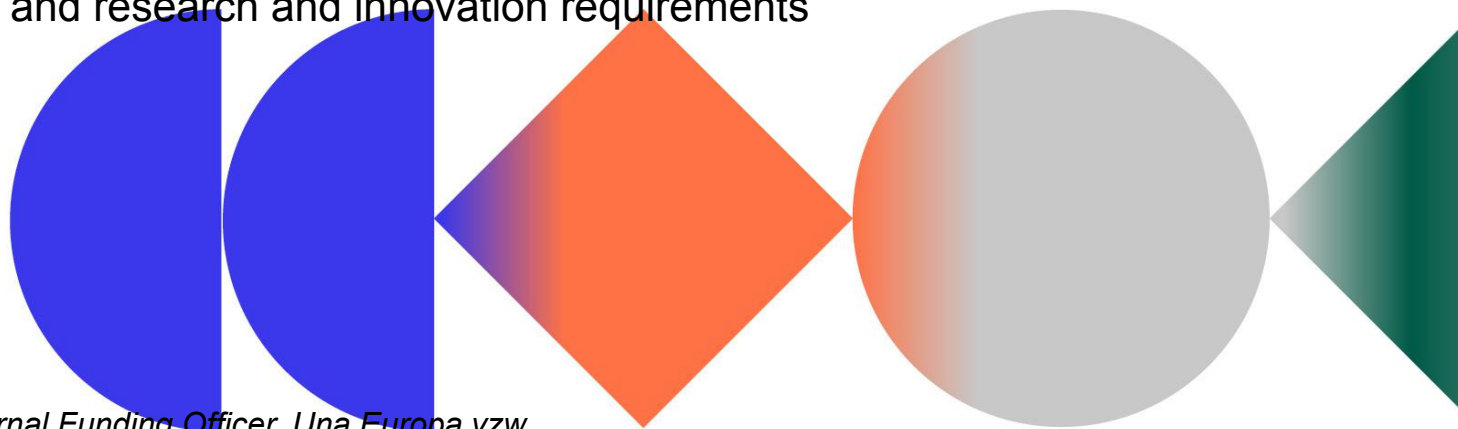
Introduction to the call topic

Facilitator gives a 20 min brief to the call topic.



HORIZON-CL6-2023-BIODIV-01-17: Interlinkages between biodiversity loss and degradation of ecosystems and the emergence of zoonotic diseases

Presentation of the call and research and innovation requirements



Kristof Vlaeminck, Senior External Funding Officer, Una Europa vzw
kristof.vlaeminck@una-europa.eu

General requirements



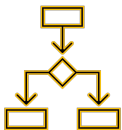
	RIA
Consortium	At least 3 independent legal entities each established in different MS or AC and additional eligibility conditions
Grant size	Around 4 million EUR (overall budget is 12 mil EUR for the call)
Funding rate	100%
Project duration	Typically 3 years
Eligibility conditions	Additional eligibility criteria: <ul style="list-style-type: none">• The Joint Research Centre (JRC) may participate as member of the consortium selected for funding.
Application	45 pages
Deadline	28 March 2023



Policy priorities

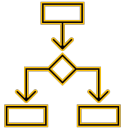
- European Green Deal
- EU biodiversity strategy for 2030

Expected outcomes



- Better understand the **relation between the degradation of ecosystems** with its associated **biodiversity loss**, including both **macro-organisms** (eg insects, animal and plants) and **environmental and host-associated microbiomes** (eg. micro algae, fungi, bacterial and virus) and the **emergence of zoonotic diseases**, focusing on how **human drivers** for biodiversity loss, such as *illegal wildlife trade, land use change in biodiversity hot-spot regions, food consumption, use of antimicrobial agents, etc* interact with the spread of zoonotic diseases.
- Understand under which **conditions** and at what **scale** the **protection of biodiversity and the restoration of ecosystems** can contribute to **mitigate** the **emergence** and **spread** of **zoonotic diseases**.

Expected outcomes



- Better understand the **socio-economic and behavioural factors** that will lead to the **development and implementation of improved policies** on **mitigating the risk of emergence and spread of zoonotic diseases**. This should also include the **ecology and behavioural traits** of those animals which play a role in the spread of zoonotic diseases.
- Based on this knowledge, propose **practical strategies to minimize the emergence and spread of zoonotic diseases** through addressing biodiversity loss.
- Better **understand the biodiversity – health nexus** and **identify biodiversity** relevant parameters and propose the necessary monitoring schemes for further integration into the One Health approach with specific focus on emerging zoonotic diseases. This monitoring should contribute to the establishment or improvement of early detection and warning systems on risks of emerging zoonotic diseases.
- In **collaboration among the projects to be funded**, create a **knowledge platform** for a) **sharing information** on relevant research activities and results concerning the prevention of zoonotic disease emergence in relation to biodiversity; and b) **reinforcing the communication and coordination between academics, innovators, end-users, researchers, public health and environmental authorities and citizens** in order to create the strong system needed for the prevention of the emergence of zoonotic diseases. This platform should be a **joint deliverable** between the projects to be funded and will be expected to coordinate the research activities which aim to understand and mitigate the risks of zoonotic disease emergence in relation to the degradation of ecosystems with its associated biodiversity loss, allowing closure of current gaps and break down of existing silos. Proposals should **dedicate appropriate resources** to develop this joint deliverable in cooperation with the other project/s funded under this topic.

Scope

- Zoonotic diseases, which result from cross-species transmission of pathogens between animals and humans, appear to emerge more frequently and pose significant threats to the health and welfare of people across the planet. Without the necessary scientific information and evidence on the underlying causes and drivers of this more frequent emergence, the only way of responding to them is after their emergence and spread.

=> Scientific information and evidence on the underlying causes and drivers is required to respond to zoonotic diseases that emerge more frequent

- Over the last decades, research has indicated that biodiversity loss and the linked degradation of ecosystems could simultaneously increase human exposure to existing pathogens, as well as increase of the probability of the emergence and spread of infectious diseases. Unsustainable exploitation of biodiversity, land-use change, illegal wildlife trade and consumption, together with the impacts of climate change and use of antimicrobial agents, increase the contact between humans and wildlife that consequently lead to the more frequent occurrence of emerging infectious diseases, of which around 75% are of zoonotic origin.

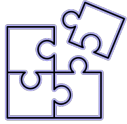
=> Drivers of emerging infectious diseases: increased contact between humans and wildlife because of biodiversity loss, degradation of ecosystems, unsustainable exploitation of biodiversity, land-use change, illegal wildlife trade and consumption, climate change and use of antimicrobial agents

Scope

- The high risks of these infectious diseases demonstrate the need for a real paradigm shift: preventing the emergence and spread of infectious zoonotic diseases by **focusing on the root causes and underlying mechanisms potentially linked to biodiversity loss and degradation of ecosystems and improving their prediction and early detection.**
- This topic aims to **identify and understand better the interlinkages between biodiversity loss** with the linked **ecosystem degradation** and the **emergence of zoonotic diseases.** Further research is needed to better understand **how the different drivers that lead to biodiversity loss and ecosystem degradation,** and how the **protection of biodiversity and the restoration of ecosystems** may influence the **emergence and spread of zoonotic diseases.** Also better **understanding** is needed on how the **conservation of animal and microbiome genetic resources** may influence the emergence of zoonotic diseases.
- The better understanding of these interlinkages will help to **establish better prediction and early detection systems,** will **enhance the coordination between all relevant stakeholders,** **ensure fast information sharing and early response** and hence reduce the spread of zoonotic diseases.

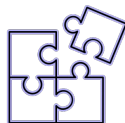
Scope

- The topic should **contribute to better understanding the biodiversity – health nexus** and help towards an enhanced **integration of biodiversity parameters and monitoring** with the **One Health approach**.
- The **development of methods** and **identification of indicators** to **monitor** the relevant **biodiversity parameters** will be essential as well as the **establishment of baselines** of these parameters.
- The **mitigation strategies** in relation to biodiversity loss and ecosystem degradation to be proposed should take into consideration all the **aforementioned information and findings**. The better understanding of the **socio-economic and behavioural factors**, as well as the **involvement of local communities and environmental, animal and human health stakeholders** is crucial for the preparation of these strategies.



The devil is in the details

- Proposals should include a dedicated task, appropriate resources and a plan on how they will **collaborate with other projects funded under the same field** and ensure **synergy with relevant activities** carried out under other initiatives in Horizon Europe, such as:
 - **HORIZON-CL6-2021-BIODIV-01-11**: What else is out there? Exploring the connection between biodiversity, ecosystem services, pandemics and epidemic risk
 - **HORIZON-CL6-2021-FARM2FORK-01-18**: One Health approach for Food Nutrition Security and Sustainable Agriculture (FNSSA)
 - **HORIZON-HLTH-2021-ENVHLTH-02-03**: Health impacts of climate change, costs and benefits of action and inaction Farm to Fork strategy
- Coherence and coordination with the **European Partnership for pandemic preparedness**, the **European Partnership for One Health/AMR Antimicrobial Resistance (AMR)** and the **European Partnership for Animal Health and Welfare (PAHW)**.
- Opportunities for cooperation with relevant European or international Agencies and initiatives, such as **EFSA, EEA, ECDC, HERA, OHHLEP, One Sustainable Health, EU4Health actions (in particular One Health Surveillance), PREZODE, Ecohealth Alliance**, etc.



The devil is in the details

- The proposals should take up relevant knowledge assessed by major science-policy bodies such as the **Intergovernmental science-policy Platform on Biodiversity and Ecosystem Services (IPBES)**, the **Intergovernmental Panel on Climate Change (IPCC)**, and by the **Convention on Biological Diversity**. They should also take into consideration and build up on the results of the request made to **EKLIPSE on Biodiversity and Pandemics**.
- The proposals should foresee cooperation with the European partnership on biodiversity **Biodiversa+** and the **Science Service “Bio-agera”** and use existing platforms and information sharing mechanisms relevant to the topic. They should also contribute knowledge to the EC **Knowledge Centre for Biodiversity**.
- In order to achieve the expected outcomes, **international cooperation** is strongly encouraged.
- **Coordination with Member States and Associated Counties** should be sought out.

Multi-actor approach

- Aiming to make the R&I process and its **outcomes more demand-driven, reliable, and relevant to society**
- Genuine and sufficient **involvement of a targeted diversity of actors** during the whole course of the project
- End-users and practitioners are to be involved, not as a study object, but to use their practical and local knowledge and/or entrepreneurial skills to develop solutions and create 'co-ownership' of results for (end-) users and practitioners.

The project must demonstrate:

- ✓ How the objectives and planning are **targeting the needs, problems, and opportunities** of the end-users of the project results
- ✓ How the concept and the **composition of the consortium reflect a balanced choice of key relevant actors** who have complementary types of knowledge and will ensure broad implementation of project results useful in practice
- ✓ How the project intends to **include existing practices and tacit knowledge** in scientific work
- ✓ How the project will **facilitate the multi-actor engagement process**
- ✓ How the project will **complement existing research and best practices** and **will result in practical knowledge, approaches or tools, made easily understandable and accessible**

Award criteria



	Excellence	Impact	Implementation
RIA	<ul style="list-style-type: none">- Clarity and pertinence of the project's objectives, and the extent to which the proposed work is ambitious and goes beyond the state of the art.- Soundness of the proposed methodology, including the underlying concepts, models, assumptions, inter-disciplinary approaches, appropriate consideration of the gender dimension in research and innovation content, and the quality of open science practices, including sharing and management of research outputs and engagement of citizens, civil society and end-users where appropriate.	<ul style="list-style-type: none">- Credibility of the pathways to achieve the expected outcomes and impacts specified in the work programme, and the likely scale and significance of the contributions from the project.- Suitability and quality of the measures to maximise expected outcomes and impacts, as set out in the dissemination and exploitation plan, including communication activities	<ul style="list-style-type: none">- Quality and effectiveness of the work plan, assessment of risks, and appropriateness of the effort assigned to work packages, and the resources overall.- Capacity and role of each participant, and the extent to which the consortium as a whole brings together the necessary expertise.

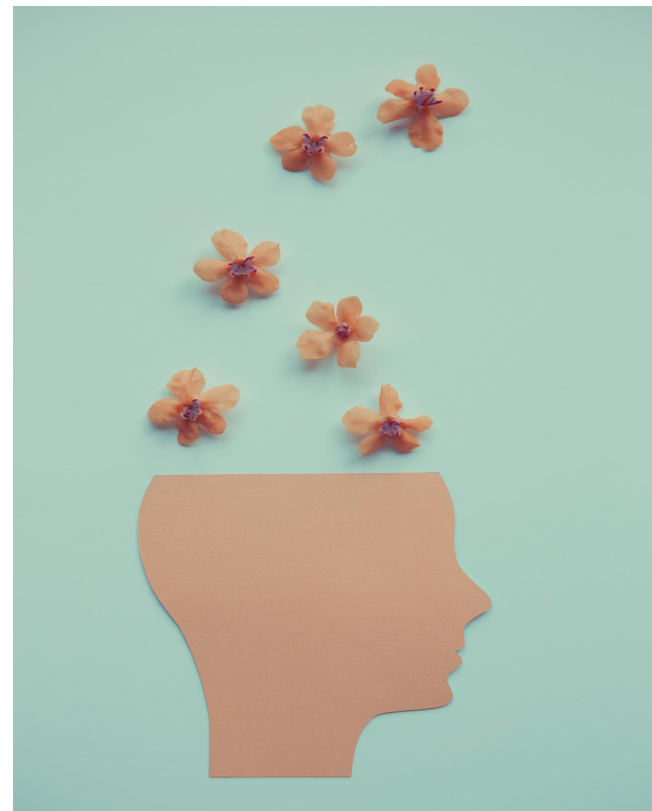
Proposals aspects are assessed to the extent that the proposed work is within the scope of the work programme topic

Things to have in mind...



- You need to demonstrate that **your idea is ambitious** and **goes beyond the state of the art**
- Be aware of the **policy background**: relevant EU policy & priorities
- Impact-driven Framework programme = New approach to impact: **Key Impacts Pathways (KIPs) – steps to know what impact is expected**
 - ✓ *Scientific, Societal and Economic impact*
- Your scientific methodology must consider **interdisciplinary, gender dimensions and open sciences practices**
- **Gender Equality Plan** covering minimum process-related requirements
- **Open Science** practices assessed as part of the scientific methodology in the excellence criterion

Una Europa presentation





Thank you for your attention

Let's get the discussion started!

Task 1, focus of the proposal



The chair will present the the initial ideas as a focus of the proposal. After that discuss together, where would you like to take the idea. You have 25 minutes of time.

Please use the on-line canvas on the next slide to document your discussion. You can decide together, who will keep the notes.

Expected outcome: Initial decision on the proposal focus. This will help the coordinator and the participants to decide, whether the proposal seems relevant for them. Focus is needed also for the next task, where you will be thinking about the experties and other elements needed.

Tip! If you are running out of space in your canvas, reduce the font size or add text to the notes section below the canvas

You can ask help from the technical hosts by pressing the “Ask for help” button on the bottom right corner of the screen.

Task 1, focus of the proposal



Add the discussion notes here:

Text

Task 2



In this task you will identify the strengths and gaps of the expertise needed for a strong proposal with the chosen focus. Think openly how to create new multidisciplinary perspectives. Also, consider inclusivity and equality. You have 25 minutes of time.

Please use the on-line canvas on the next slide to document your discussion. There are guiding questions provided on the canvas to help you with the discussion.

Expected outcome: Initial view to needed capabilities, infrastructures and partners. This helps to start building links to existing and needed new partners.

Tip! If you are running out of space in your canvas, reduce the font size or add text to the notes section below the canvas

What kind of expertise are needed? Which profiles are there already? Which are missing?

Type here the answers:

Who would be the essential partners outside of Una Europa and outside academia?

Type here the answers:

Task 3, summary of the discussions



You have 10 minutes for this task.

List here the coordinator and the core group responsible for the preparation:

What feels clear now? What is unclear?

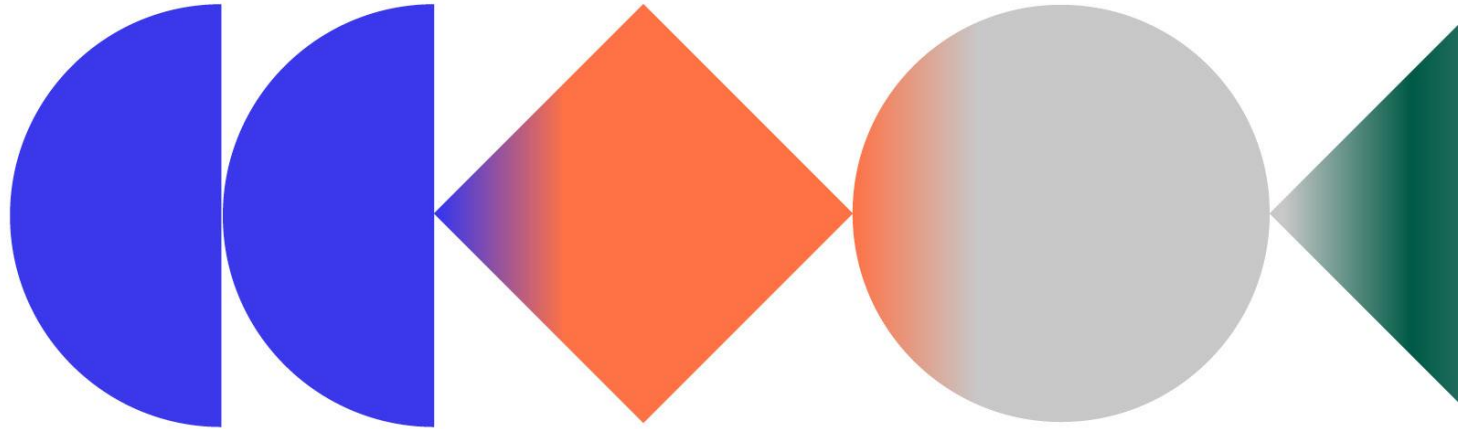
Group 3



HORIZON-CL6-2023-FARM2FORK: EU-Africa Union – food safety

Chair: Dr. Ndegwa Henry Maina (UH)

Facilitator: Terezia Rua (Una Europa Vzw)



Expected outcomes



- Learning about the Horizon Europe cluster call particularities and the call topics
- Drafting the core idea for a proposal / topic
- Appointing a coordinator and a core group for the proposal preparation / topic

Introduction to the call topic

Facilitator gives a 20 min brief to the call topic.



HORIZON-CL6-2023-FAR M2FORK-01-20: EU-Africa Union – food safety



Presentation of the call and research and innovation requirements

Terezia Rua, Policy Advisor Una Europa, KU Leuven
terezia.rua@kuleuven.be

General requirements

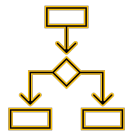


	RIA
Consortium	At least 3 independent legal entities each established in different MS or AC and additional eligibility conditions
Grant size	Around 5 million EUR (overall budget is 10 mil EUR for the call)
Funding rate	100%
Project duration	Typically 3 years
Eligibility conditions	Additional eligibility criteria: <ul style="list-style-type: none">• at least 3 partners from Africa and at least 2 from the same region as defined by the African Union (all eligible for EU funding)• international organizations with HQ in MSs or ACs are eligible for funding as well• The JRC may participate as a member of the consortium• Multi-actor approach
Application	45 pages
Deadline	12 April 2023



Policy priorities

- European Green Deal
- Farm to Fork strategy
- The AU-EU High-Level Policy Dialogue (HLPD) on Science, Technology and Innovation on Food and Nutrition Security and Sustainable Agriculture



Expected outcomes

- Improved African food safety systems,
- Building blocks for improved food safety in Africa, improving climate, environment and food systems, reducing losses by mycotoxins, enhancing local transformation, local markets and regional trade, while reducing impacts on environment, biodiversity, health and society.



Innovation dimension

- Space for mentoring and accelerating business concepts, including social innovation and upscaling in view of African or European food business entrepreneurs and start-ups using cascading funding opportunities
- Proposals may involve financial support to third parties

Scope

- **Contribute to a better understanding of food safety in the informal sector and improve the understanding of informal trade operations** and ways to improve food safety for better access to nutritious food for urban and rural populations.
- **Assess and recommend ways to maintain the informal sector`s participation towards possible integration into the formal food system.** Explore ways for its access to infrastructure such as labs to be able to respond and manage the food safety risks along the chain.”
- **Address regulatory aspects, including the risk of over regulation.** Develop solutions towards a quality culture from the SME level going forward, including opportunities of better organization of SME in view of lower cost for certification and conformity assessment.
- **Pilot training systems to help the informal sector towards compliance** with food safety and quality schemes.
- **Improve tools to improve risk assessment of health risks**, including long term risks of mycotoxins. Risk assessment and other evidence should inform the regulatory systems.

- **Contribute towards the development of a food safety strategy for Africa**, including monitoring and an early warning system.
- **Contribute to a better understanding of how fermentation can reduce mycotoxin levels** in food products.
- **Identify solutions and business cases to improve microbiome based approaches** such as traditional and new food fermenting, drying and coating processes for reducing food waste and promoting longer shelf lives. Develop approaches for scale-up.
- **Adapting to climate change:** reducing increased risks to food safety
- **Implement the multi-actor approach by involving a wide range of food system actors** and conducting trans- and inter-disciplinary research including an effective contribution of SSH disciplines.

Multi-actor approach

- Aiming to make the R&I process and its **outcomes more demand-driven, reliable, and relevant to society**
- Genuine and sufficient **involvement of a targeted diversity of actors** during the whole course of the project
- End-users and practitioners are to be involved, not as a study object, but to use their practical and local knowledge and/or entrepreneurial skills to develop solutions and create 'co-ownership' of results for (end-) users and practitioners.

The project must demonstrate:

- ✓ How the objectives and planning are **targeting the needs, problems, and opportunities** of the end-users of the project results
- ✓ How the concept and the **composition of the consortium reflect a balanced choice of key relevant actors** who have complementary types of knowledge and will ensure broad implementation of project results useful in practice
- ✓ How the project intends to **include existing practices and tacit knowledge** in scientific work
- ✓ How the project will **facilitate the multi-actor engagement process**
- ✓ How the project will **complement existing research and best practices** and **will result in practical knowledge, approaches or tools, made easily understandable and accessible**

Award criteria



	Excellence	Impact	Implementation
RIA	<ul style="list-style-type: none">- Clarity and pertinence of the project's objectives, and the extent to which the proposed work is ambitious and goes beyond the state of the art.- Soundness of the proposed methodology, including the underlying concepts, models, assumptions, inter-disciplinary approaches, appropriate consideration of the gender dimension in research and innovation content, and the quality of open science practices, including sharing and management of research outputs and engagement of citizens, civil society and end-users where appropriate.	<ul style="list-style-type: none">- Credibility of the pathways to achieve the expected outcomes and impacts specified in the work programme, and the likely scale and significance of the contributions from the project.- Suitability and quality of the measures to maximise expected outcomes and impacts, as set out in the dissemination and exploitation plan, including communication activities	<ul style="list-style-type: none">- Quality and effectiveness of the work plan, assessment of risks, and appropriateness of the effort assigned to work packages, and the resources overall.- Capacity and role of each participant, and the extent to which the consortium as a whole brings together the necessary expertise.

Proposals aspects are assessed to the extent that the proposed work is within the scope of the work programme topic

Things to have in mind...



- You need to demonstrate that **your idea is ambitious** and **goes beyond the state of the art**
- Be aware of the **policy background**: relevant EU policy & priorities
- Impact-driven Framework programme = New approach to impact: **Key Impacts Pathways (KIPs) – steps to know what impact is expected**
 - ✓ *Scientific, Societal and Economic impact*
- Your scientific methodology must consider **interdisciplinary, gender dimensions and open sciences practices**
- **Gender Equality Plan** covering minimum process-related requirements
- **Open Science** practices assessed as part of the scientific methodology in the excellence criterion





Thank you for your attention

**Let's get the discussion
started!**

Task 1, focus of the proposal



The chair will present the the initial ideas as a focus of the proposal. After that discuss together, where would you like to take the idea. You have 25 minutes of time.

Please use the on-line canvas on the next slide to document your discussion. You can decide together, who will keep the notes.

Expected outcome: Initial decision on the proposal focus. This will help the coordinator and the participants to decide, whether the proposal seems relevant for them. Focus is needed also for the next task, where you will be thinking about the expertises and other elements needed.

Tip! If you are running out of space in your canvas, reduce the font size or add text to the notes section below the canvas

You can ask help from the technical hosts by pressing the “Ask for help” button on the bottom right corner of the screen.

Task 1, focus of the proposal



Add the discussion notes here:

Text

Task 2



In this task you will identify the strengths and gaps of the expertise needed for a strong proposal with the chosen focus. Think openly how to create new multidisciplinary perspectives. Also, consider inclusivity and equality. You have 25 minutes of time.

Please use the on-line canvas on the next slide to document your discussion. There are guiding questions provided on the canvas to help you with the discussion.

Expected outcome: Initial view to needed capabilities, infrastructures and partners. This helps to start building links to existing and needed new partners.

Tip! If you are running out of space in your canvas, reduce the font size or add text to the notes section below the canvas

What kind of expertise are needed? Which profiles are there already? Which are missing?

Type here the answers:

Who would be the essential partners outside of Una Europa and outside academia?

Type here the answers:

Task 3, summary of the discussions



You have 10 minutes for this task.

List here the coordinator and the core group responsible for the preparation:

Type here the answers:

What feels clear now? What is unclear?

Type here the answers: