

## Appendix 4. Detailed stratigraphic columns

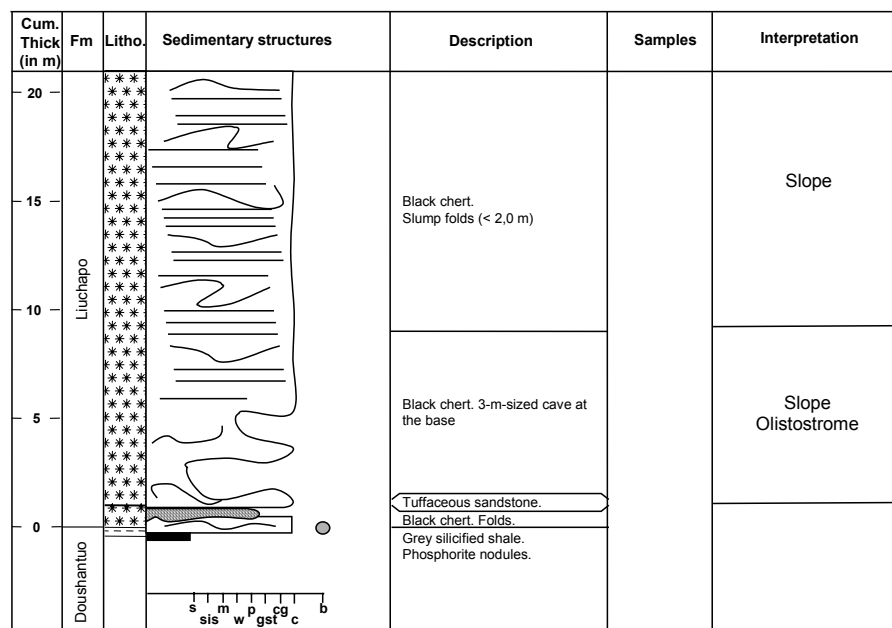
In the following pages, the stratigraphic columns are listed in alphabetical order.

Legende:

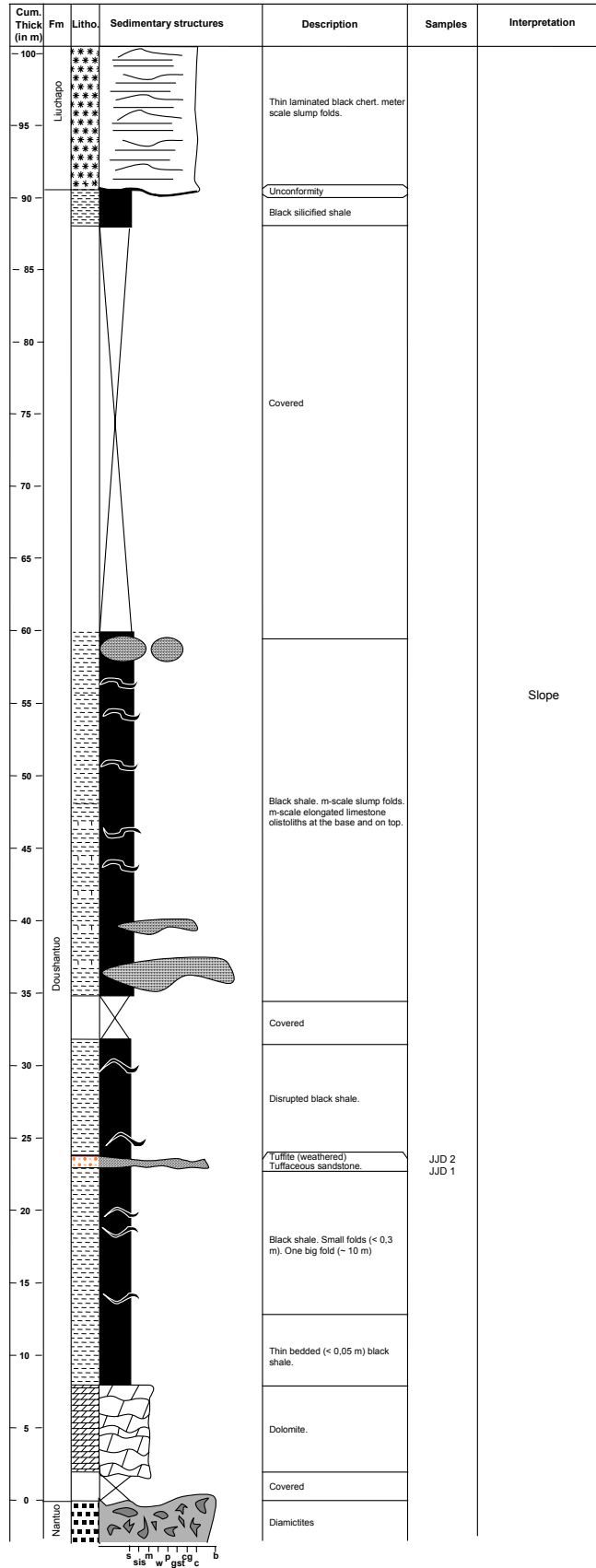
	Diamictite		Grainstone		Phosphorite nodules		Slump folds
	Dolomite		Algal coal		Chert nodules		Desiccation cracks
	Shale		Phosphorite		Olistoliths		Oolites
	Chert		Tuffaceous sandstone		Faults		Cross strata
	Mudstone		Conglomerate		Horizontal laminations		Biomat laminations
	Wackestone/Packstone		Silty shale		Tepee		Pyrite
	Breccia		Shaly dolomite		Ripples		Liquefaction structures
	Bentonite		Mud pebbles		Tuffaceous sandstone		Tuffaceous beds

s: shale, sis: silty shale, m: mudstone, w: wackestone, p: packstone, gst: grainstone, cg: conglomerate, c: chert, b: breccia

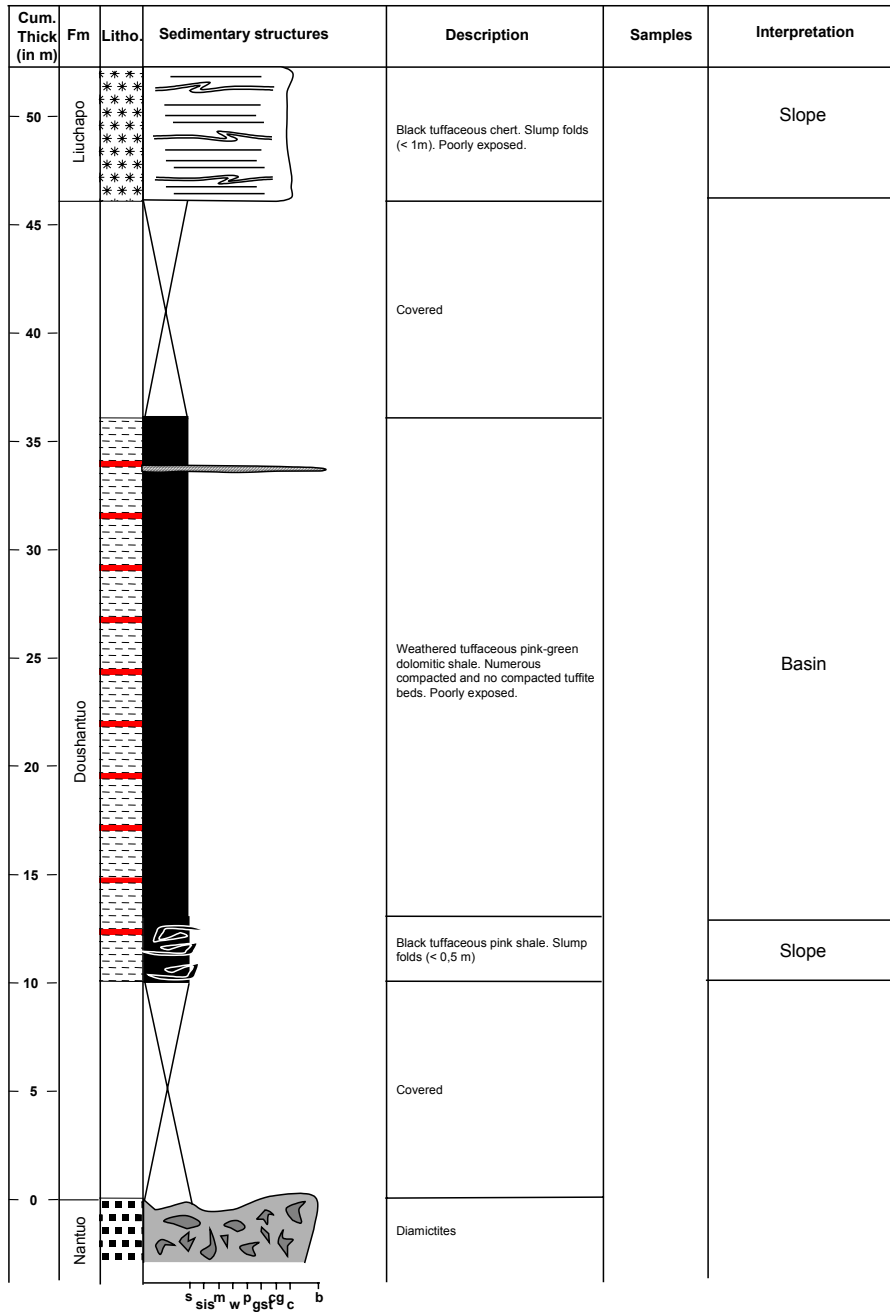
### Guozhitang section, Yuanling county, Hunan province



Jinjiadong section, Xupu county, Hunan province



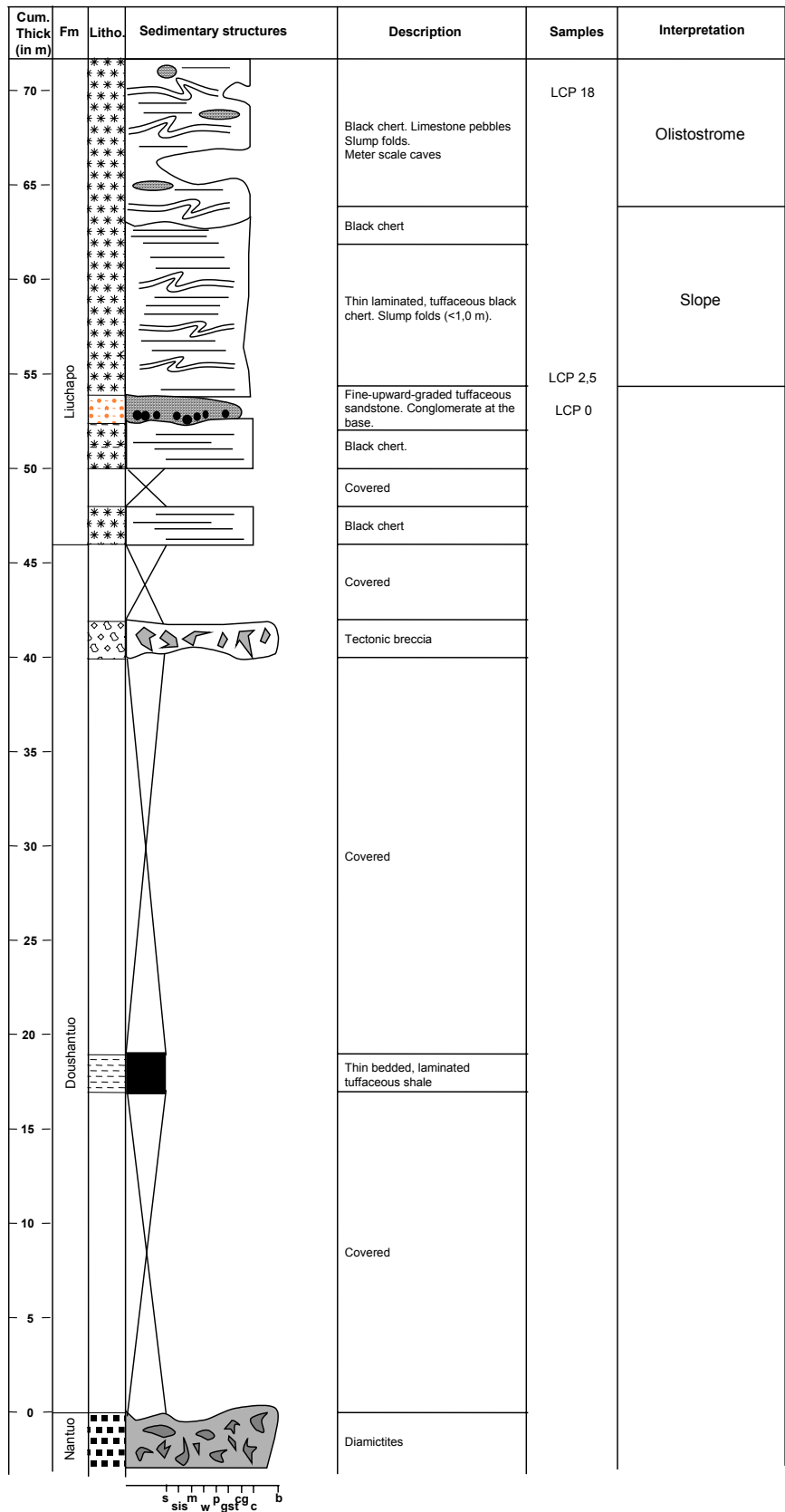
Liuchapo section, Anhua county, Hunan province



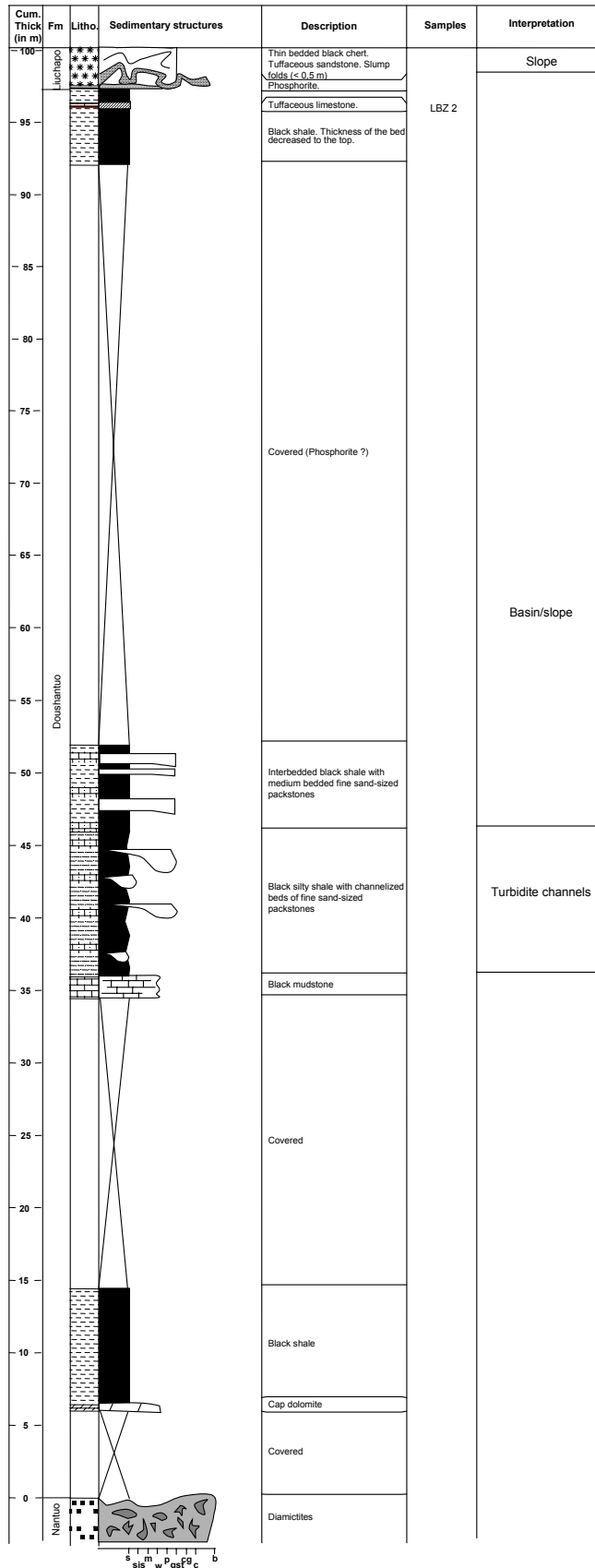
Lujata section, Zhangjiajie county, Hunan province

Cum. Thick (in m)	Fm	Litho.	Sedimentary structures	Description	Samples	Interpretation
80	Lujahapo	*****		Black chert		Basin
75						
70						
65						
60	Doushantuo	*****				Basin
55						
50						
45						
40						
35						
30						
25						
20						
15						
10	Lujahapo	*****				Basin
5						
0						

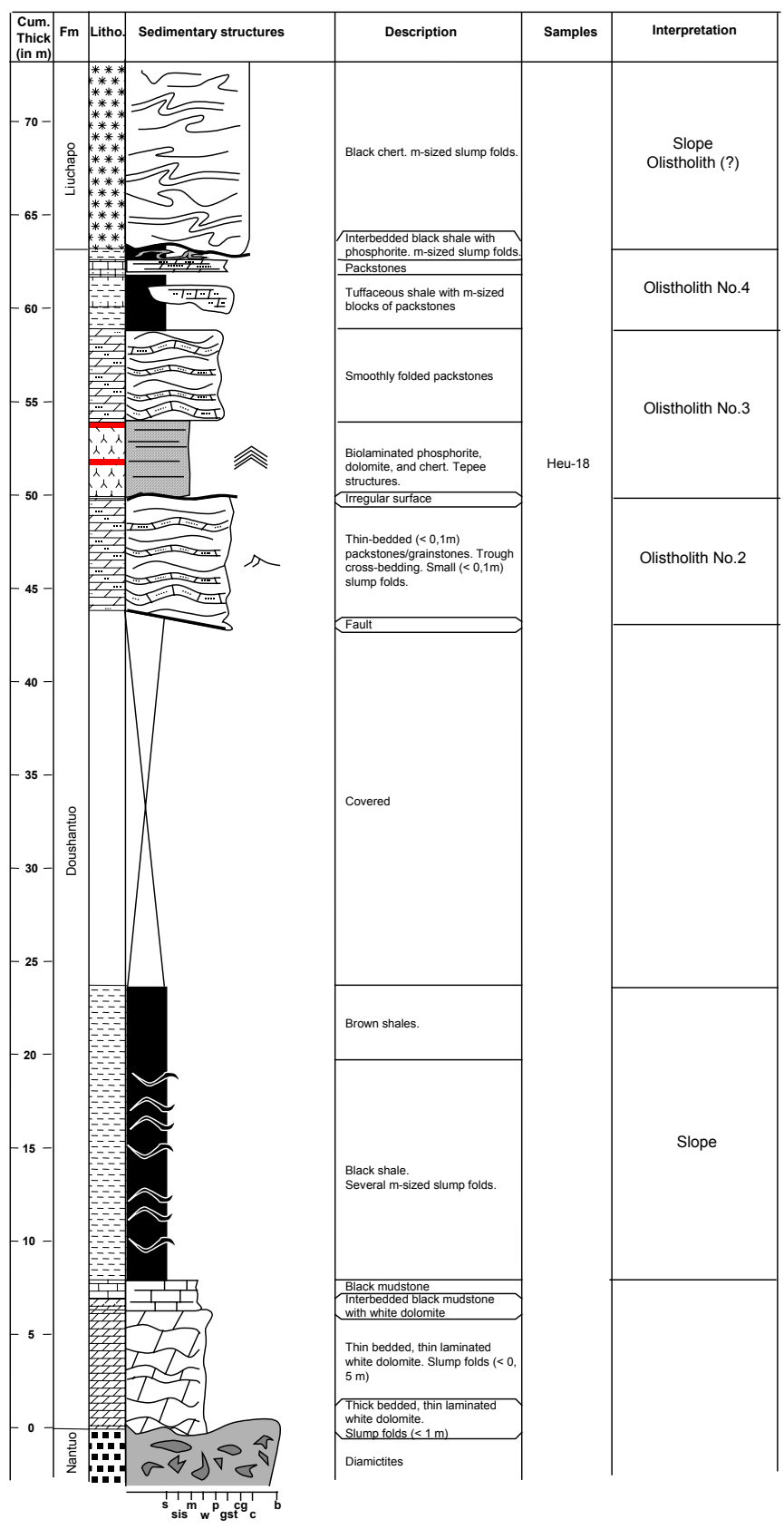
**Liujiato section, Yuanling county, Hunan province**



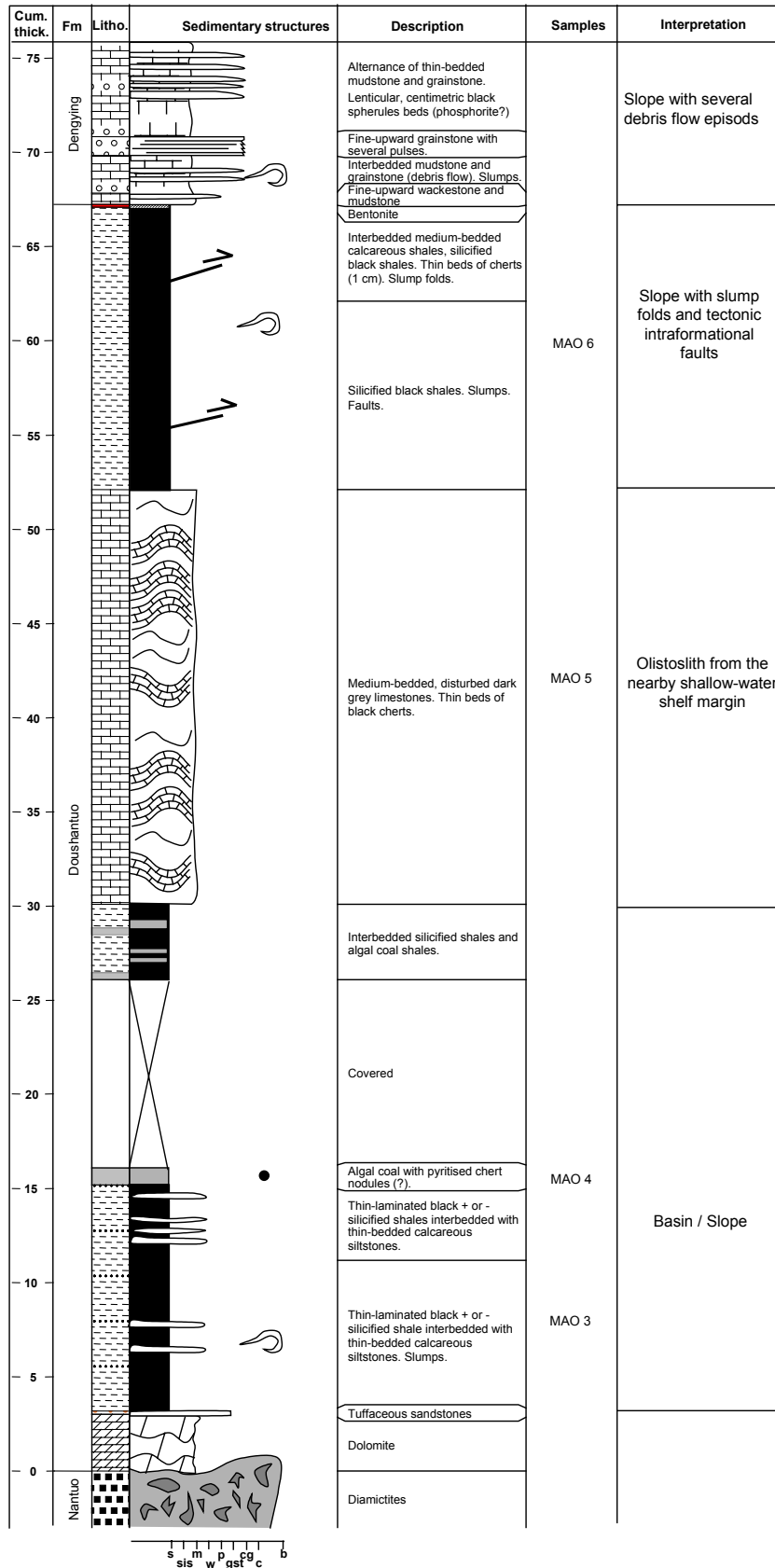
Longbizui section, Guizhang county, Hunan province



**Luoyixi section, Luoyixi city, Hunan province**

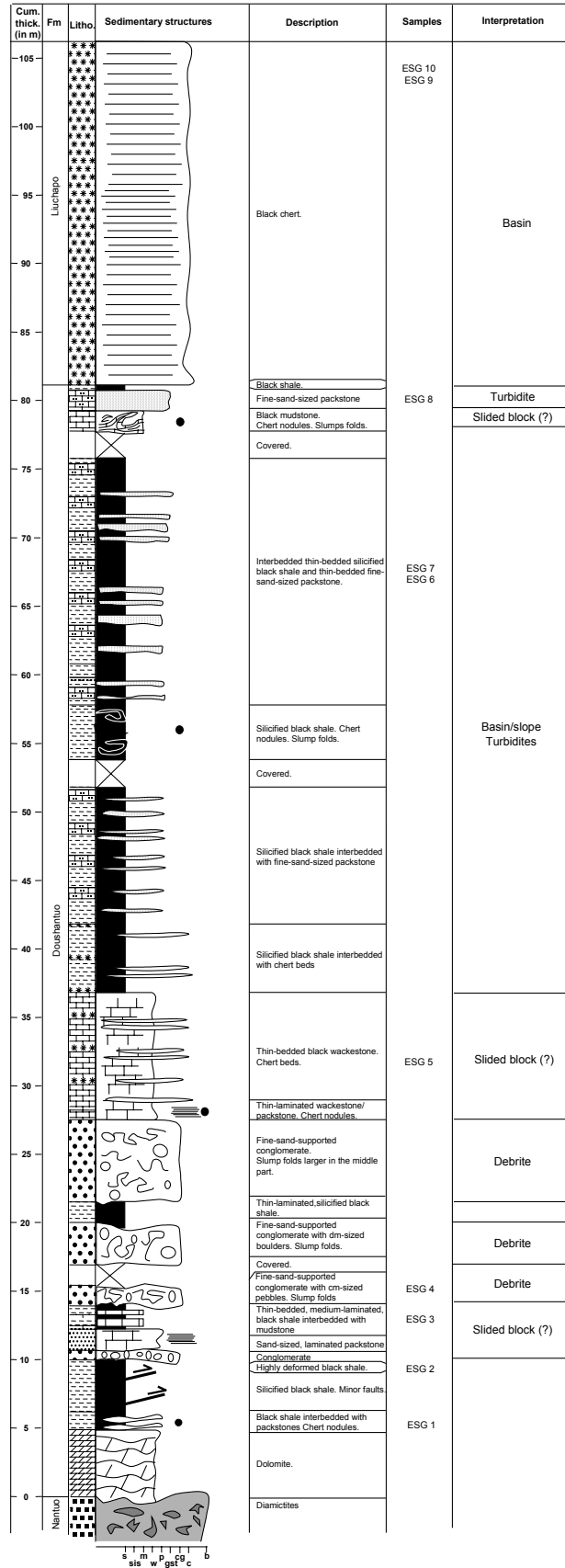


Maoping section, Zigui county, Hubei province

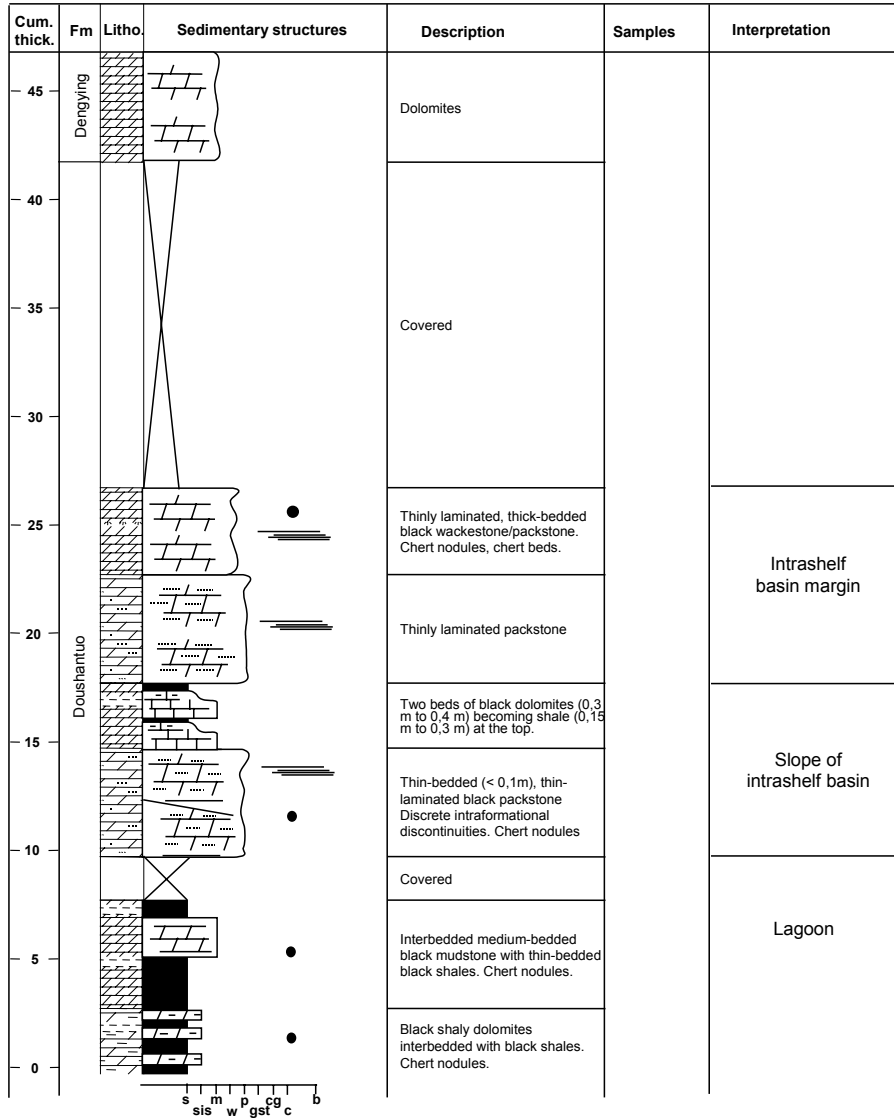




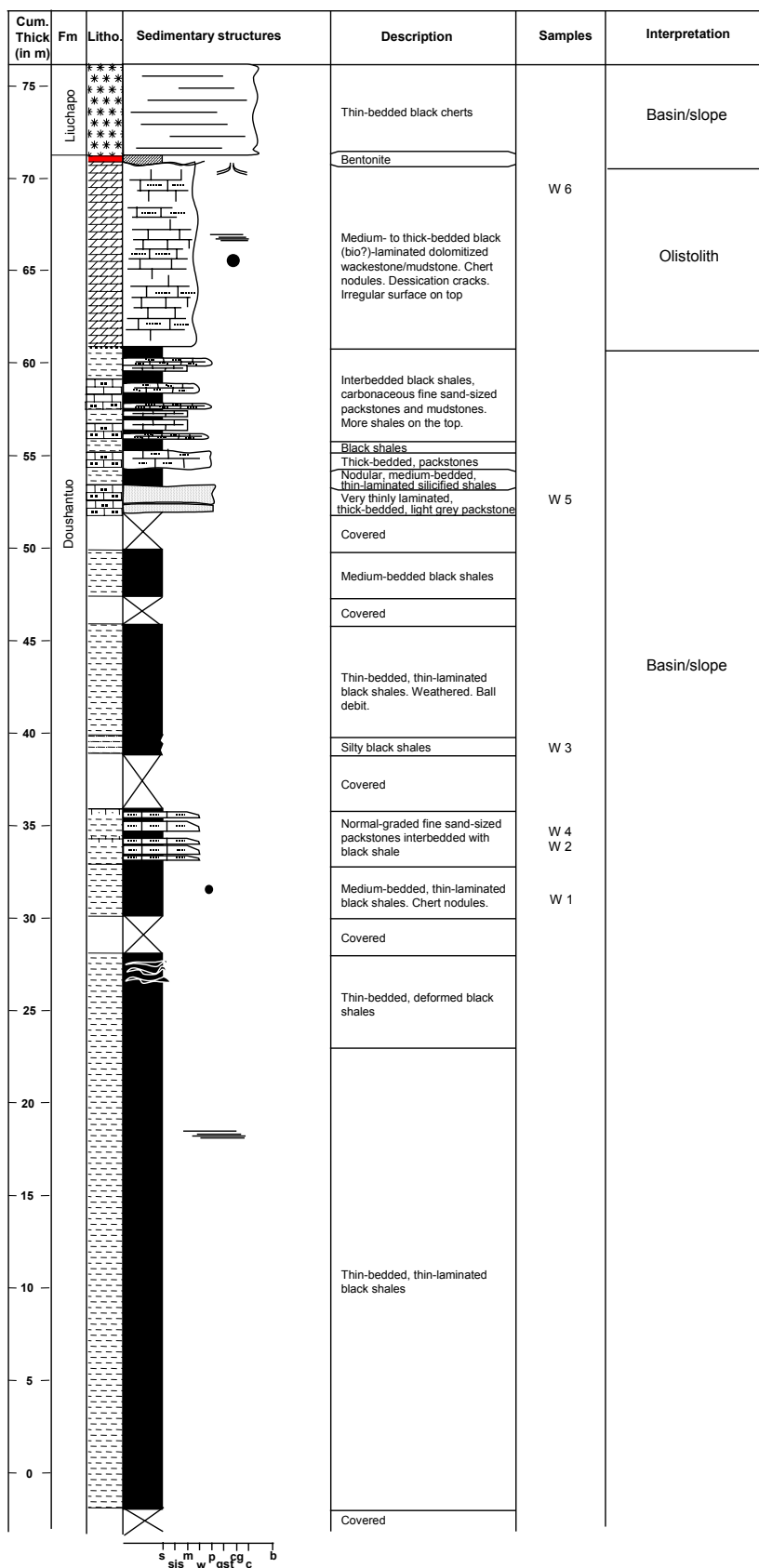
Sangshuping section, Zhangjiaje county, Hunan province



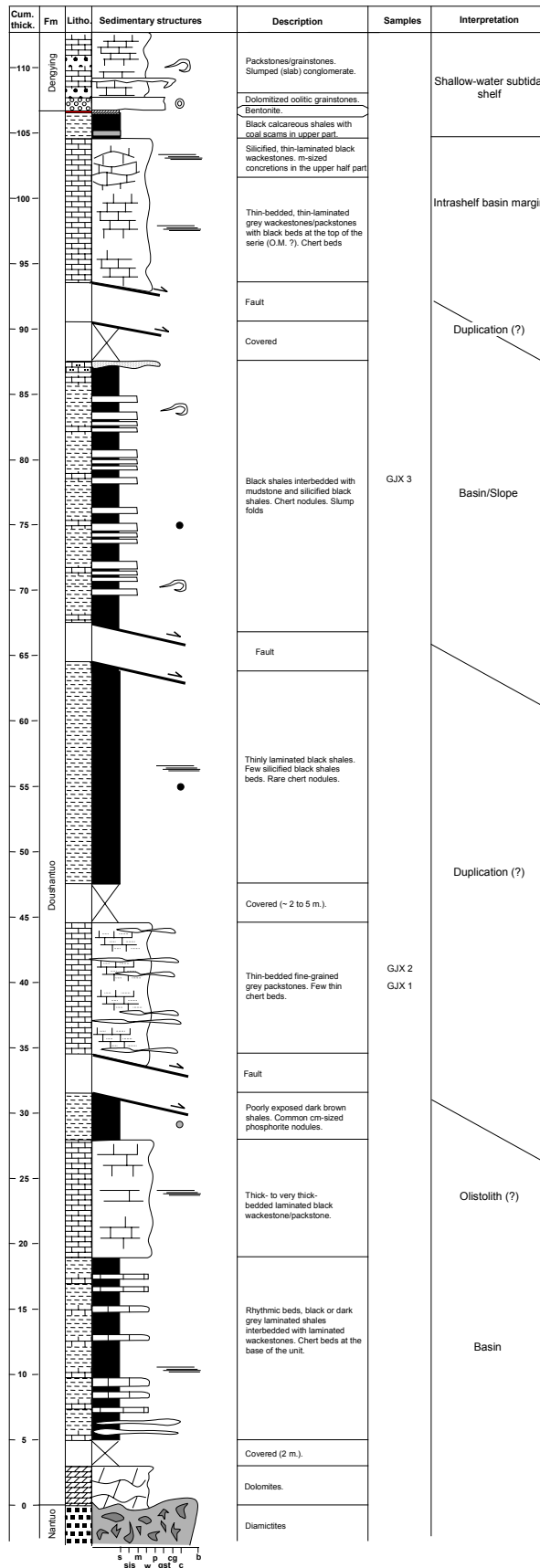
Neo-Tianjiayuanzi section, Yichang county, Hubei province



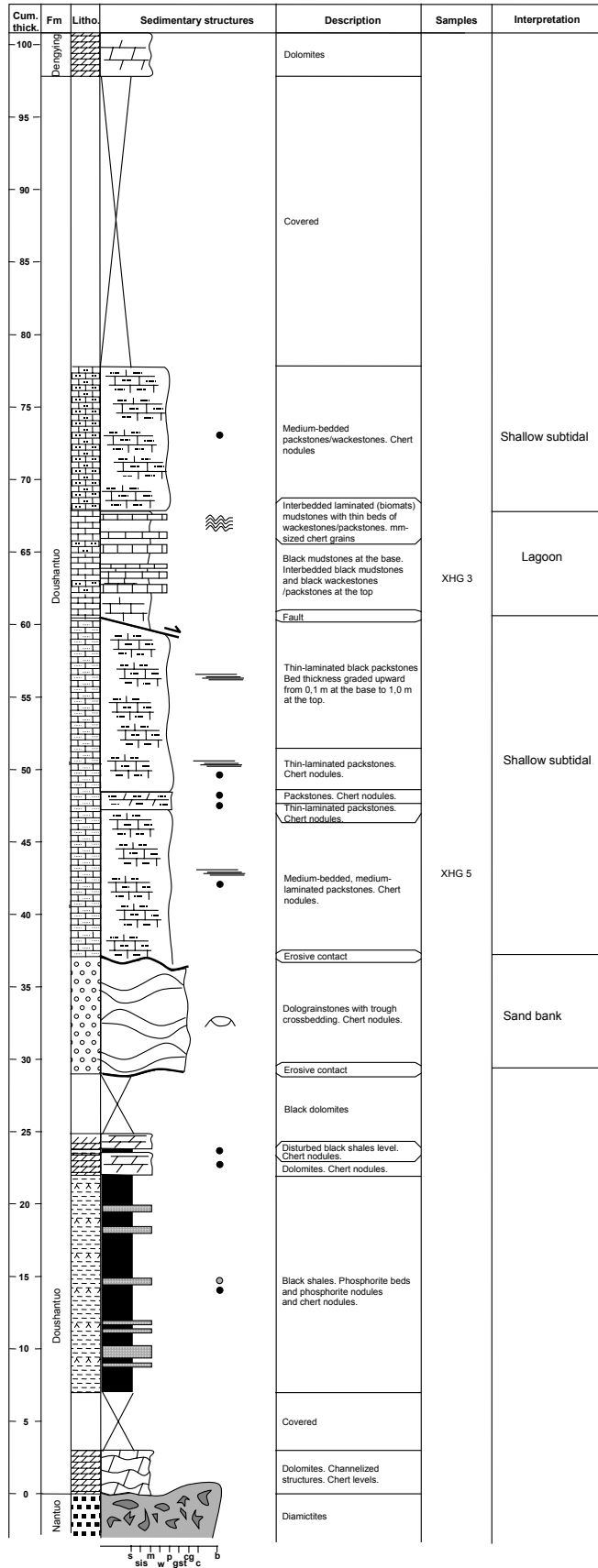
Wuhe section, Taijiang county, Guizhou province



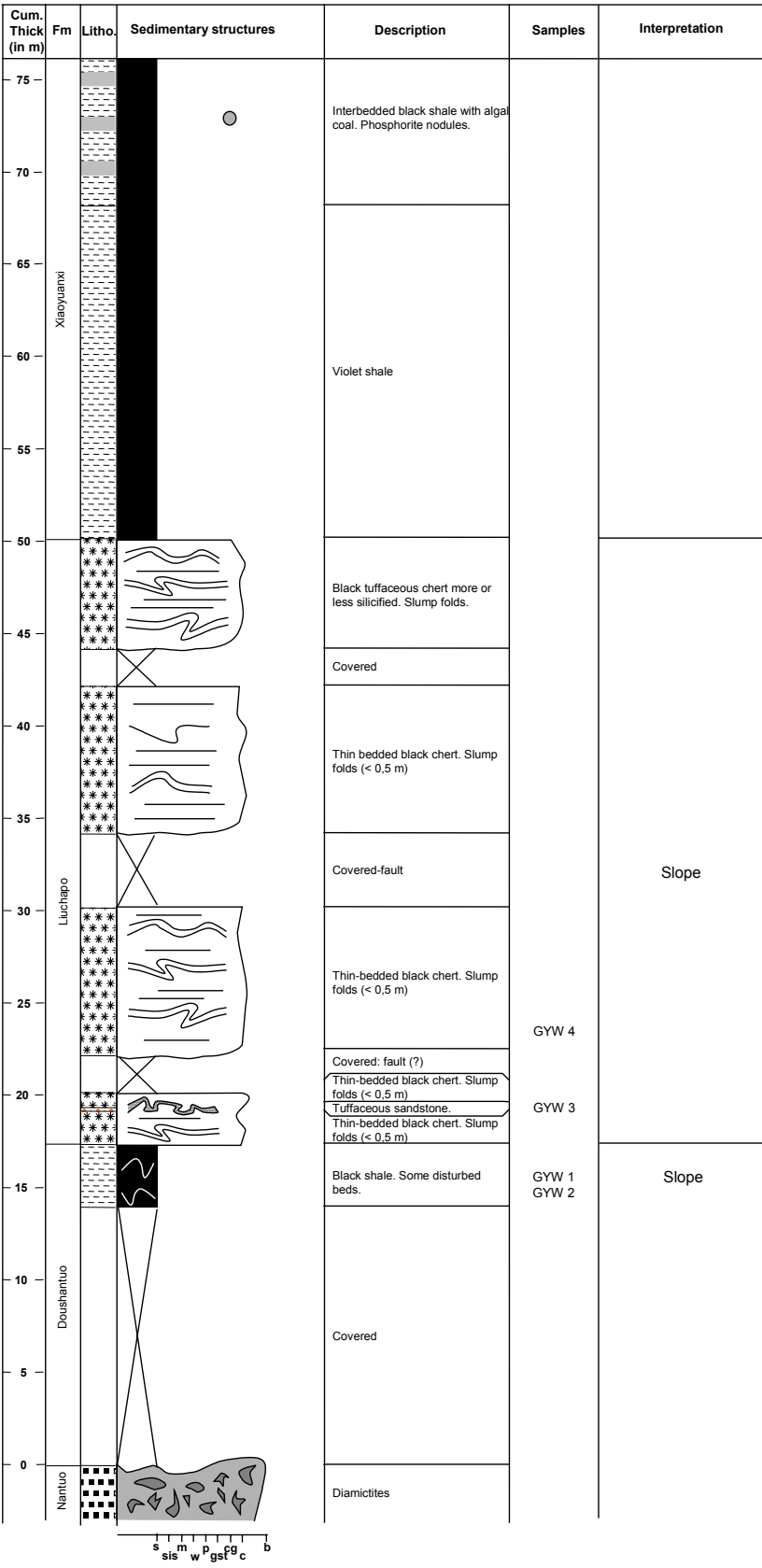
**Wuhe section, Zigui county, Hubei province**



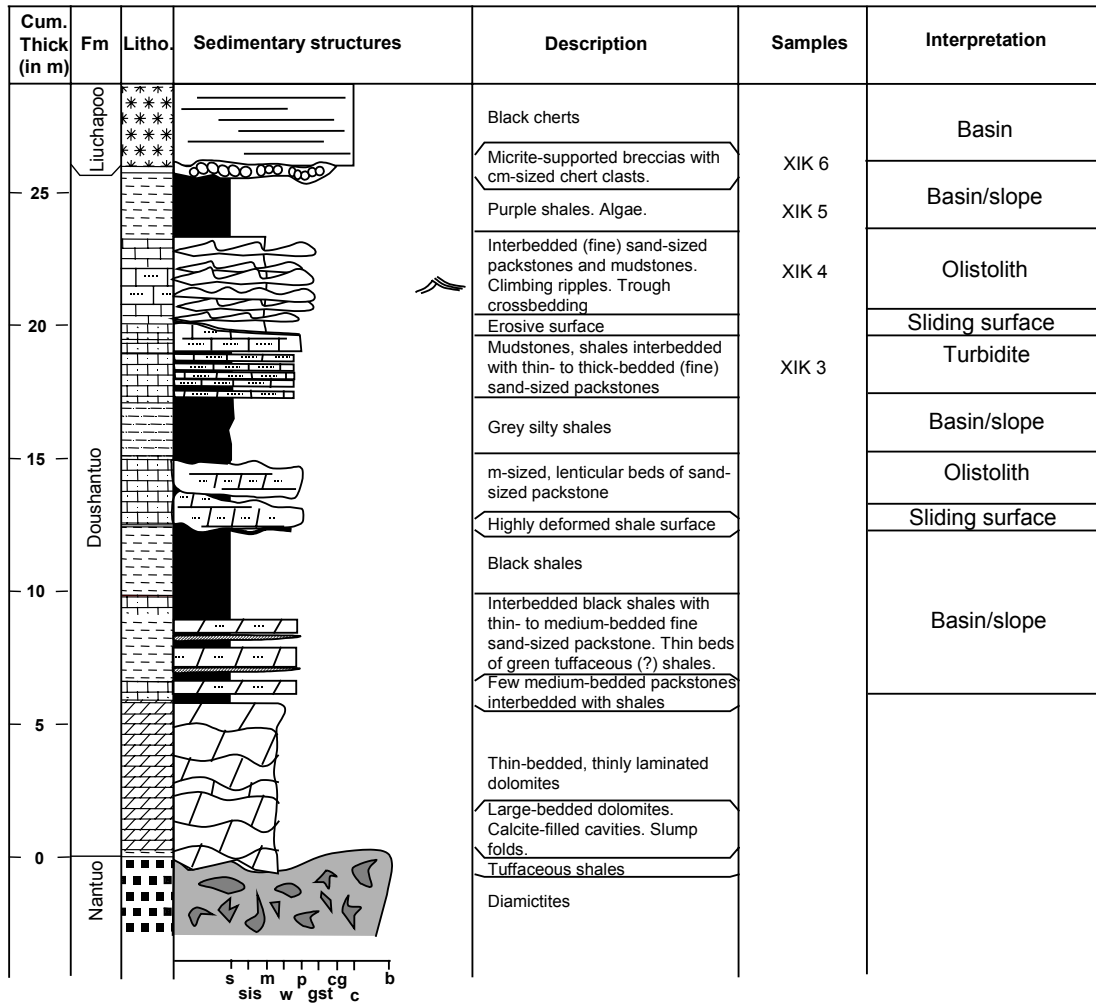
Xiaofenghe section, Yichang county, Hubei province



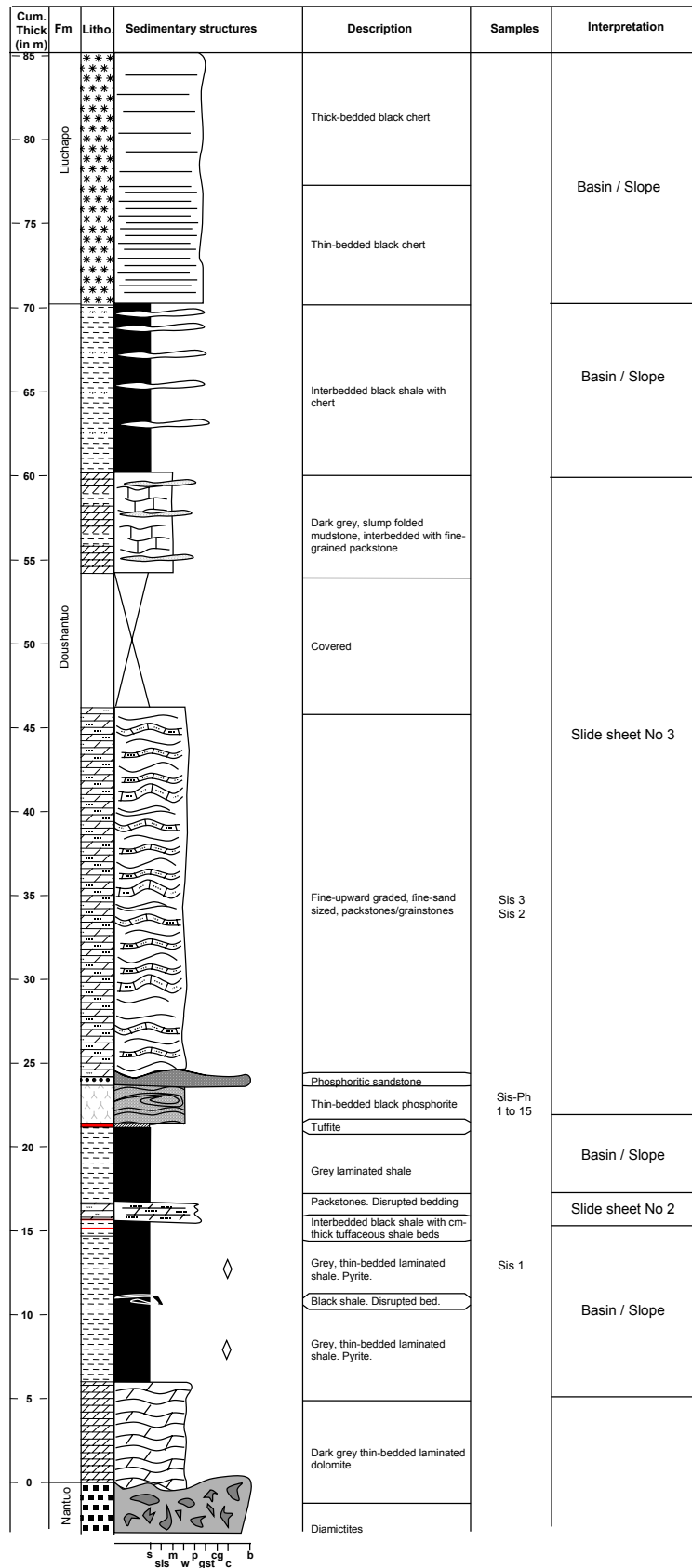
**Xiaoyuanxi section, Anhua county, Hunan province**



**Xikou section, Jiangkou county, Guizhou province**

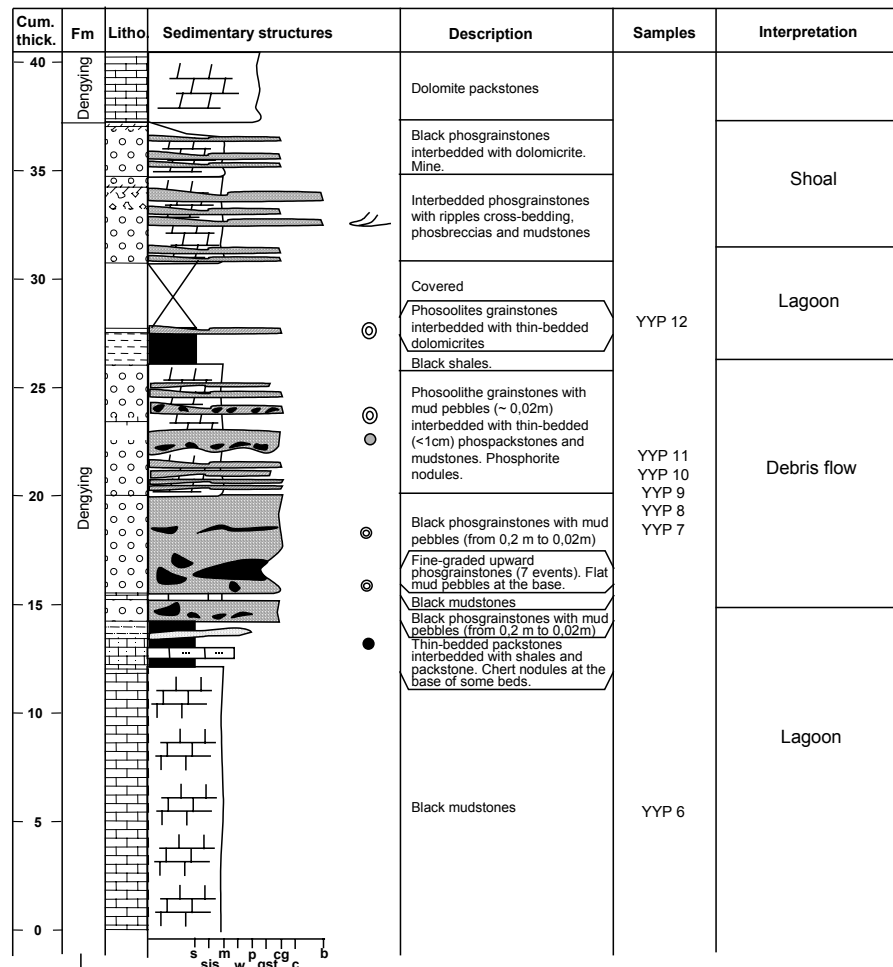


**Xixi section, Louxi county, Hunan province**



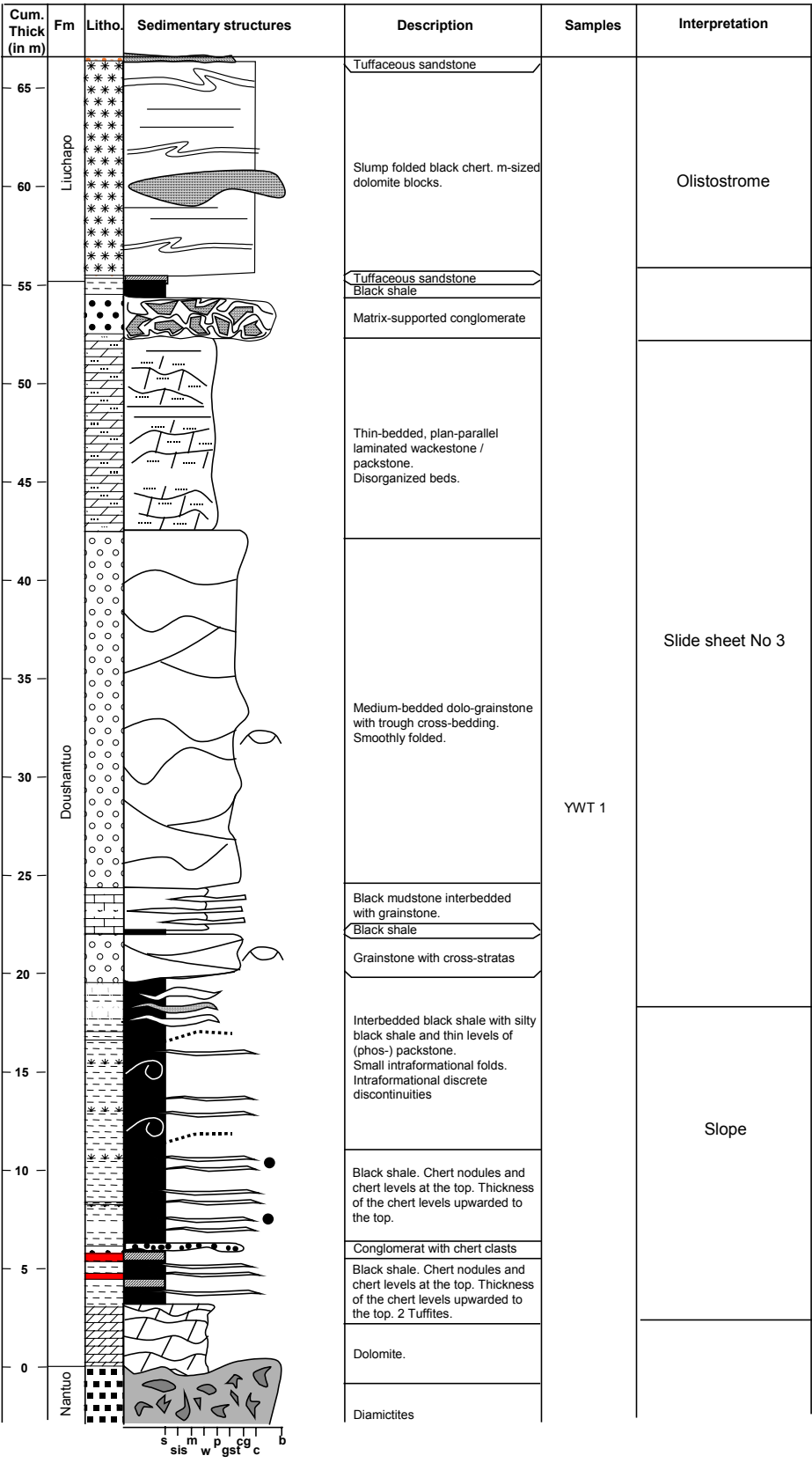


Yangjiaping section, Shimen county, Hunan province

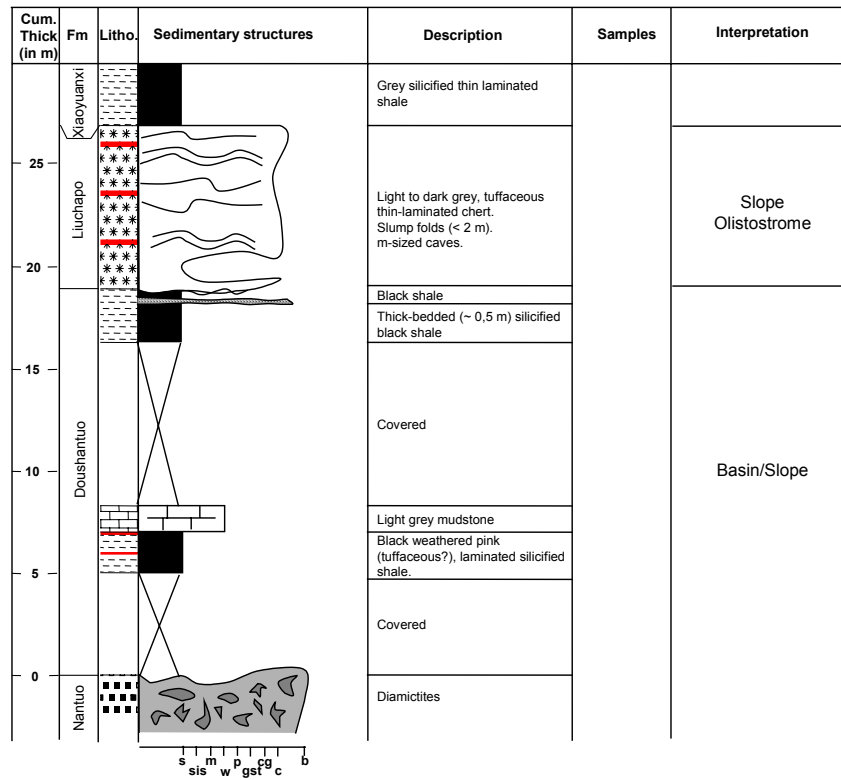


▼ Nantuo Formation 145 m downward almost entirely covered. When outcrop, it is shale interbedded with few mudstones.

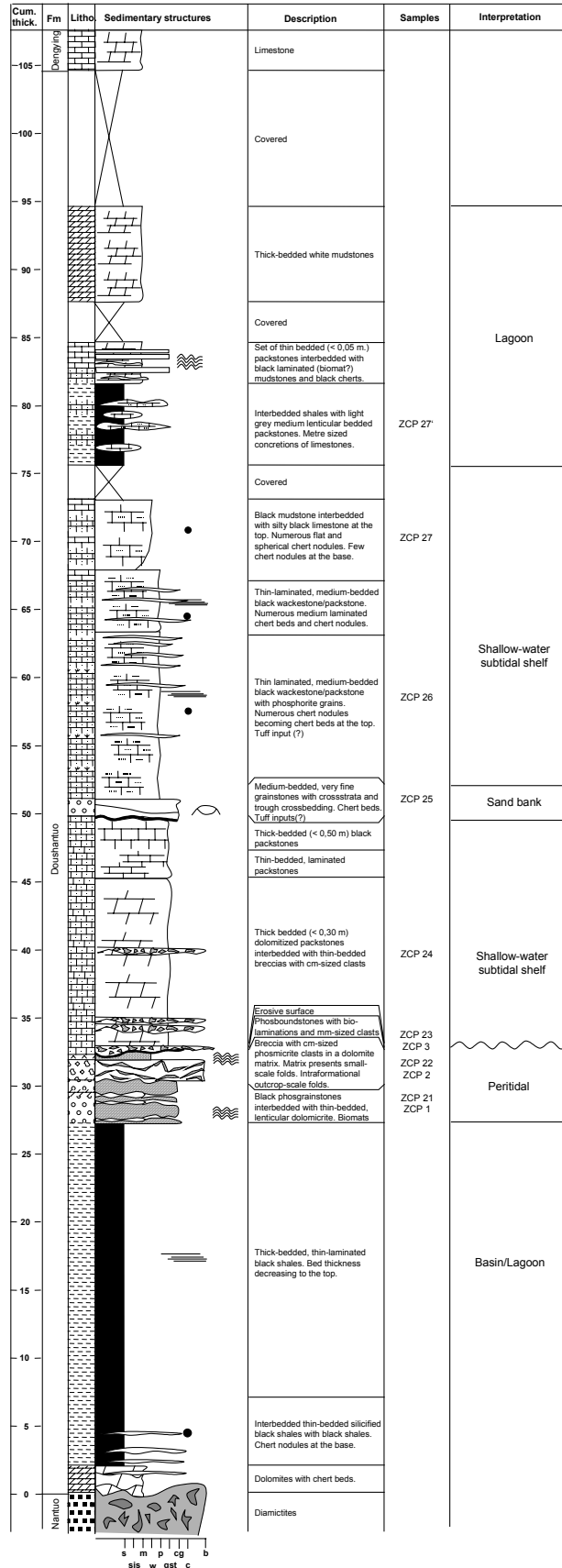
Yanwutan section, Yuanling county, Hunan province



Yunmaxi section, Anhua county, Hunan province



Zhancumping section, Yichang county, Hubei province



Zhongling section, Shimen county, Hunan province

