



Tackling the frailty burden with an integrative value-based approach: results from a mixed-methods study

Daniel Fürstenau^{1,2} · Hannah Haneke³ · Claudia Spies⁴ · Tim Walz⁵ · Kai Schewina⁵ · Moritz Höft⁴ · Rudolf Mörgeli⁴ · Felix Balzer²

Received: 1 October 2020 / Accepted: 17 August 2021 / Published online: 17 September 2021
© The Author(s) 2021

Abstract

Aim The purpose of this paper is to investigate the implementation of value-based care principles in the context of frailty in the perioperative process, highlighting the importance of an integrative perspective considering medical and patient-centric outcomes as well as costs.

Subject and methods This mixed-methods study employs a sequential design. Qualitative observational data were used to identify needs and barriers for implementing value-based principles, and quantitative methods were subsequently used to demonstrate the value of employing such an approach using data gathered from $n = 952$ patients. Propensity score matching was applied to identify the frailty-associated costs of the inpatient setting for $n = 381$ non-frail and $n = 381$ (pre-)frail patients, in particular considering patient-centric outcomes.

Results The qualitative analysis identified three main challenges when implementing value-based principles in the context of perioperative care and frailty, namely challenges related to the cost, patient-centric, and integrative perspectives. In addressing these shortcomings, a quantitative analysis of a propensity score-matched sample of patients undergoing surgery shows additional frailty-associated costs of 3583.01 [1654.92; 5511.04] EUR for (pre-)frail patients and the influence of individual patient-centric attributes. Effect size Cohen's d was 0.26.

Conclusion The results demonstrate that frailty should be considered from an integrative perspective, taking cost, patient-centered outcomes, and medical outcomes into account simultaneously. The results also show the value of a research design which uses qualitative data for the identification of needs and barriers, as well as quantitative data for demonstrating the usefulness of the conceived value-based approach to perioperative care delivery.

Keywords Frailty · Value-based health care · Digital health solutions · Barriers · Perioperative process · Integrative approach

Introduction

Frailty is a multidimensional syndrome commonly occurring among elderly people, which manifests itself through an increased vulnerability to stressors, which results in age-associated decline of one's physical and psychological reserves (Xue 2011). Research on frailty, and especially frailty-associated complications, has been increasingly referred to, underlining its importance for evaluating and enhancing the functional status of patients in situations associated with great stressors. While aging is inescapable, recent findings suggest that frailty may quite well be, at least partly, preventable and can be potentially corrected through exercise and pre-rehabilitation training (Liu and Fielding 2011), better nutrition (Chaudhary 2018), and psychosocial support (Freitag and Schmidt 2016; Dent and Hoogendijk 2014). An accurate risk stratification is crucial in developing a better

✉ Daniel Fürstenau
dfu.digi@cbs.dk

¹ Department of Digitalization, Copenhagen Business School, Howitzvej 60, 2000 Frederiksberg, Denmark

² Institute of Medical Informatics, Charité - Universitätsmedizin Berlin, Charitéplatz 1, 10117 Berlin, Germany

³ Department Value-Based Health Care, Charité – Universitätsmedizin Berlin, Charitéplatz 1, 10117 Berlin, Germany

⁴ Department of Anaesthesiology and Intensive Care Medicine, Charité – Universitätsmedizin Berlin, Charitéplatz 1, 10117 Berlin, Germany

⁵ Department Wirtschaftsinformatik, Freie Universität Berlin, Garystr. 21, 14195 Berlin, Germany

understanding of the individual physical and psychological resources of patients in critical situations (Birkelbach et al. 2019).

Surgeries and the corresponding perioperative care cycle are among the most psychologically and physiologically stressful conditions. In Germany, approximately 16.9 million patients undergo surgical procedures each year, and almost half of these are performed among patients over the age of 65, a range of the population especially prone to frailty (Statistisches Bundesamt 2018). As pointed out, frailty is a problem in the perioperative process due to increased risk from anesthesia such as delirium, as well as an increased risk of dementia, cognitive dysfunction, and other conditions (Feinkohl et al. 2017; Winterer et al. 2018). Frailty is also associated with higher occurrence of surgical-related complications, including the need to be discharged to an ICU, deeper sedation, and breathing aids—thereby substantially increasing the risk of worsened postoperative outcomes (Birkelbach et al. 2019).

Having the demographic change in mind, frailty should be recognized as a critical area not only for an *individual's outcome* in a perioperative setting but also for its *importance in public health* (Buckinx et al. 2015; Birkelbach et al. 2017). The perioperative process encompasses multiple stakeholders and steps (Fürstenau et al. 2019), which include: admission to the hospital by one's general practitioner or specialist, in-patient routing in the hospital, pre-operation planning and operation, postoperative patient routing in ICU or ward, patient release and ambulatory or rehabilitation care. Given this spectrum of care, frailty is thereby associated not only with worsened medical outcomes. It is also associated with high costs, as studies such as that of Sirven and Rapp (2017) for the French health care system context have shown, and with worsened individual patient outcomes.

Reorganizing care around patients in an efficient and effective manner can be realized with a *value-based health care approach*, supported by digital health solutions. The overarching goal is defined as achieving the best outcomes while lowering the costs, thereby maximizing value for the patients themselves (Porter and Teisberg 2006). One part of the equation is to evaluate outcomes that matter to patients. Patient-reported outcome measures (PROMs), documented by the patients themselves, aim at covering dimensions that reflect the individual's holistic health status serve as crucial measures. Validated and standardized outcome sets, as the ones provided by ICHOM, the International Consortium of Health Outcome Measures, consider frailty to be an important dimension of the clinical status of an elderly person (ICHOM 2021). Most studies have solely analyzed the usability and implementation of PROMs in certain contexts, which is of high importance. We argue, however, that efficiently tackling burden of disease requires integrative studies considering both parts of the equation. Often, the economic perspective is separated from the outcomes created which poses constraints to estimating real patient value.

Care quality is multidimensional, as is the life of an elderly person suffering from frailty who needs to undergo surgery.

Thus, a holistic evaluation of care quality and implementation of digital solutions requires integrating all indicators and combining them instead of solely analyzing specific aspects. We assume that digital solutions embedded in a value-enhancing infrastructure should be initially designed around the patients' needs. Even when considering a patient-centric approach, many promising digital health innovations are not transferred to clinical reality. In particular, approaches such as ours that involve the integration of care face several barriers to implementation (van Dyk 2014; Harst et al. 2019), namely economic, technical, end-user acceptance, and organizational barriers. These barriers hold back unlocking value for patients and should be considered when designing and implementing digital health solutions. While there has been extensive research into these barriers, we still have limited understanding of how to overcome them, unlocking the ability of health care organizations to realize patient value using digital health solutions in general and in the context of frail patients.

The purpose of this paper is to investigate *the implementation of value-based health care principles in the context of frailty in the perioperative process*. Our study aims at providing evidence that analyzing interdependencies between all variables requires valuing not only medical outcomes, but also the patient perspective in terms of satisfaction and costs at the same time. The Charité–Universitätsmedizin Berlin, one of Europe's largest university hospitals, has recently increased their drive toward value-based health care by launching multiple initiatives (e.g., Karsten et al. 2018; Dewey 2018). The Department of Anesthesiology and Intensive Care Medicine has implemented a special track for elderly patients scheduled for elective surgery. This track includes a frailty assessment procedure for patients over 65 years of age. The implemented digital health solutions consisted of the core of an extension in a digital study database (REDCap) as well as subsequently the incorporation of the functionality into the patient data management system (PDMS, COPRA) for routine treatment in elderly patients scheduled for surgery. Furthermore, clinical decision support functionality in the form of an overview dashboard using a traffic light style was incorporated into the electronic medical record (EMR) system (SAP i.s.h. med). Further solutions (e.g., a self-assessment app) have been prototyped. At the heart of the implementation is a digital frailty assessment form in combination with analytical scoring methods.

Methods

This *sequential mixed-methods study* (Creswell and Creswell 2018) builds upon and uses data from a retrospective observational study performed at Charité's Department of Anesthesiology and Intensive Care Medicine (see Birkelbach et al. 2019), where a frailty assessment procedure was implemented in 2016 and 2017 (Frail-Amb, EA1/227/

16). This is a revelatory case due to its high number of stakeholder interfaces, superior level of professionalism, and use of (state-of-the-art) best practices and process guidelines with the goal to learn and improve upon. It is also a good environment to study both the obstacles towards implementing value-based principles and how they have been dealt with up to now. The study by Birkelbach et al. (2019) focused on medical outcomes and found that the rate of complications for elderly surgical patients was significantly higher in the pre-frail (34.7%) and frail groups (47.4%) as compared to the non-frail group (27.5%).

A *sequential mixed-methods design*, one in which qualitative data are collected before the quantitative data, analyzed separately, subsequently informing the quantitative study, was most suitable to consider the implementation of value-based principles vis-à-vis digital health solutions in the context of improving patient value in perioperative care processes for elderly people. Our study design firstly qualitatively considers the needs and barriers facing implementing a value-based health care approach. Based thereupon, quantitatively demonstrating the value of such an approach, we have considered three main building blocks of its implementation as shown in Fig. 1, namely *the cost perspective, the patient-centric perspective, and the integrative perspective*.

Qualitative data collection and analytical strategy Before analyzing and integrating the cost and individual patient-reported measures, we collected qualitative data on the barriers to unlock patient value under the current approach. Qualitative data on the implementation were collected within members of the research team consisting of a digitalization researcher (first author), bringing an outside perspective, and anesthesiologist/informatics researcher (last author), who led the implementation, and was complemented by efforts from student thesis/research assistants. Other members of the research team were involved in providing feedback from different perspectives, including anesthesiology (third author), controlling (fifth author), and geriatrics (seventh author). Since we were involved in the implementation ourselves, we could conduct action research (Baskerville 1999) using both participatory and observational methods and data (Becker and Geer 1957), which had the advantage of giving us direct access to

practices and behaviors, such as solution conception or design. These data were collected between 2017 and 2019 at several occasions, including field events, planning sessions, and workshops.

Table 1 displays qualitative field data that were collected from the three perspectives of costs, patient-centric viewpoints, and integrative viewpoints. Written field notes were maintained and analyzed to find any noted hurdles during the implementation of the approach. A note-taking tool was used by the first author, where main events, conversations within the research team, screenshots of the implementation, and other materials were stored. For the analysis, the material was structured by the first author using tabular formats, extracting main themes from the textual data. Regular discussions were held between the first and second author to iteratively refine the insights by going back and forth between data and (value-based health care) theory. We referred to advice on qualitative data analysis (Miles and Huberman 1994), creating tabular descriptions of main stakeholders (anesthesiologists, nurses, medical secretaries, IT employees) and their stances toward the approach's implementation as well as practical case narratives (Langley 1999; Cloutier and Langley 2020) showing the temporal progression of the implementation. For this paper, we have consolidated the findings into three main challenge areas, namely a missing cost perspective, lack of a patient-centric perspective, and a missing integrative perspective.

Quantitative data collection and analytical strategy

Extending the results on medical outcomes (Birkelbach et al. 2019), the current study has gathered data for patients undergoing elective surgery with diagnosis-related group (DRG; Schreyögg et al. 2006) inpatient treatment cost data from the hospital's electronic health record system, which could serve as a blueprint for continuous analysis of costs and outcome. This analysis does not include patients with emergency procedures, procedures without anesthesia contribution or operation, multiple assessments, cancelled operation, or cardiac surgery. The integration of both medical and economic data enabled us to perform analyses which detailed the economics of inpatient treatment for frail patients in the essentially common and stressful context of surgical procedures.

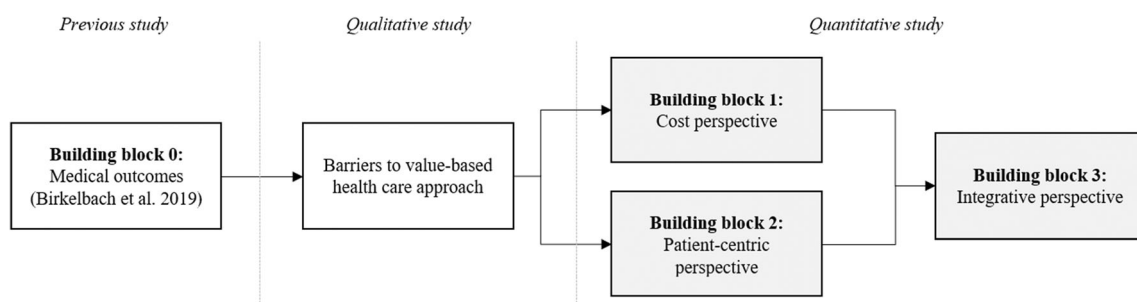


Fig. 1 Study design illustrating main blocks of a value-based health care approach

Table 1 Qualitative data overview

Perspective	Description	Sample data
Cost perspective	Observational data from collecting the data, setting up the database, and performing and presenting the analysis	<ul style="list-style-type: none"> • Memos from data comprehension sessions with the clinic's controlling unit (2 interactions) • Memos from data entry observations by student thesis researcher (1 interaction) • Internal documentation on clinical information system controlling module (archival data) • Joint sessions (first, third, last author) to develop scenarios to demonstrate the usefulness of a cost perspective (3 interactions)
Patient-centric perspective	Observational data from close interactions within the research team, including with the leader of implementation	<ul style="list-style-type: none"> • Presentation and feedback from a workshop of student thesis researcher with several members of the research team (1 interaction) • Thesis report on mockup for patient self-assessment app (archival data)
Integrative perspective	Observational data from close interactions within the research team, including with the leader of implementation	<ul style="list-style-type: none"> • Memos from discussions within research team, including implementation leader (5 interactions) • Notes from kick-off session of project focusing on rehabilitation in perioperative care (1 interaction) • Memos from further observations and interactions

Data was collected from $N = 952$ individual patients between June 2016 and March 2017 during routine frailty assessment and inpatient treatment. The selection of patients for the frailty assessment followed several steps, namely, screening ($n = 15,376$ patients), frailty assessment ($n = 1502$ patients), enrolled patients ($n = 1455$), and excluding patients with multiple assessments (a flowchart with detailed selection criteria is given in Appendix 1). Of these patients, $n = 952$ patients were included in our analysis when cost and frailty assessment data was simultaneously available. The assessment consisted of a set of validated questions following the Fried criteria of physical, social, and psychological resources (Fried et al. 2001). The questionnaire data was collected by medical students and nurses. Patients were categorized into non-frail, pre-frail, and frail status; for the presented analysis we considered the differences between non-frail and both pre-frail and frail patients, whereas we combined the two latter groups (pre-frail and frail) into one (pre-)frail group which was considered sufficient for our purpose (see also Dedeyne et al. 2017 for a review outlining studies that have done the same). We decided to group them as our qualitative study shows that in clinical reality, distinguishing between pre-frail and frail patients poses critical barriers in terms of a too high degree of complexity and limited clinical advantage for the patients themselves. General patient information also available from the questionnaire included age, sex, body mass index (BMI), smoking status, and polypharmacy defined as routine intake of >5 medications per day. Further, the Barthel Index (Mahoney and Barthel 1965), which was extracted from the electronic health record system, was determined for each patient reflecting on the individual's ability for fulfilling activities of daily living with or without help. Comorbidities were calculated with help of the Charlson Comorbidity Index (CCI) (Charlson et al. 1987).

We determined the frailty-associated costs in the inpatient environment through a cost-economic evaluation of the data set. A first analysis considered the *cost perspective* testing for differences across non-frail and (pre-)frail patients. Comparisons of the two groups considered mean differences and used unpaired t -tests. Differences were considered statistically significant at $p < 0.05$, and all analyses were two-tailed. All confidence intervals are reported at the 95% level.

A second analysis followed considering the *individual patient perspective* in more detail. A variable was chosen in order to reflect an important aspect of the "quality of life" dimension of the ICHOM standard set for an older person. We considered *happiness* (binary coded as 1 if the person indicated happiness during assessment). We used logistic regression due to the binary nature of this variable and our intent to explore covariates and influences.

In a third step, we analyzed the *integrative perspective* in which we considered costs, frailty status, individual patient-reported health information, and other covariates. We analyzed the data using R package (version 4.0.2, <https://www.r-project.org/>) and SPSS 22.0 for Windows (IBM Corp., Armonk, NY, USA). For propensity score matching, we used the SPSS PS-Matching 3.0.2 package, with 1:1 matching using variables age, gender, BMI, Barthel Index, CCI, surgical discipline, smoking status, polypharmacy, complications, length of stay (LoS), and happiness as covariates. The variables for PS-score matching were selected based on consistency with prior analyses (especially Birkelbach et al. 2019), comprehensiveness, and domain-based reasoning. We used paired t -tests with independent samples to show similarity of variables across the matched data. We compared costs for matched data using independent-sample paired t -tests.

Results

Qualitative results

Our observational data confirmed three main challenges regarding unlocking real patient value of the value-based approach considering frailty in the perioperative process, namely (1) a missing cost perspective, (2) lacking patient-centeredness of the approach, and (3) a missing integrative perspective (see Table 2). Using the categorization by Harst et al. (2019), these barriers can be categorized using previously identified barriers to the implementation of digital health solutions, thereby opening up the opportunity to embed data in a broader analytical context.

Missing cost perspective While the preceding analysis by Birkelbach et al. (2019) had demonstrated the value of frailty assessment for explaining important medical outcomes such as complications and length of stay, the approach was not yet linked to a financial perspective, which limited insights into the economic implications of frailty in the perioperative process. Our observational data confirmed that such a perspective would be valuable, especially as clinic controlling and medical professionals are working towards maintaining a more integrative view of care delivery. While striving for extending value-based care delivery, economic concerns often serve as driving forces for realizing innovational change. Considering and linking the cost perspective with outcomes builds a fundamental for designing and creating new reimbursement structures serving as incentives for various players to support value-based care models.

This, however, called for combining gathered data from surgical patients undergoing the frailty assessment with actual cost data from clinic controlling. The cost perspective is linked to DRG data, which determines reimbursement for treatment based on diagnosis and related severity degrees as well as other discounting factors. This data is complemented by internal cost accounting data which allows the care

deliverer, which in our case is the hospital, the determination of treatment margins when costs are deducted from the compensation received. This data is typically sensitive since it gives insight into both patient treatment and competitive corporate data. Using such data for our research meant gaining the obligatory permits and pseudonymizing the data.

Lacking patient-centeredness of the approach The initial assessment tool was accessible only as paper-based. Early in the project to implement the assessment, the team had complemented the paper-based forms with a study database using the REDCap tool. REDCap is a community-based digital health solution consisting of a database used primarily for clinical and translational research purposes, having a browser-based interface for data entry (Harris et al. 2009). Later, the assessment was also integrated into the patient data management system of the Anesthesiology Department, allowing it to be used as a stationary desktop solution by nurses and nurse assistants for entering the test results as well as the hospital's electronic health record system. However, the desktop solution could not be used at the bedside and was restricted to working hours. This could pose constraints to our target population, as frailty often correlates with decreased mobility. In response, we created the concept for a tablet app for medical personnel to be used for full-scale assessment at bedside.

Moreover, it lacked a patient self-assessment, inconsistent with our goal of putting patients center stage. We also conceptualized a patient self-assessment app based on a basic validated set of questions (i.e., Tilburg frailty indicator; Freitag et al. 2016), which could be used when the patient is entering the hospital and potentially be extended to home usage after discharge. By linking the full-scale frailty assessment with a self-assessment, we aimed at considering the patients' perspective even more and to facilitate early stratification. In this study, we use questions from the original assessment, namely happiness status, offering a starting point for further extending disease-related patient-reported outcomes.

Table 2 Identified challenges

Challenge	Description	Category according to Harst et al. (2019)
1) Missing cost perspective	<ul style="list-style-type: none"> • Missing purview of the <i>economic</i> implications resulting from frailty-related costs and thereby limiting financial value created by the approach 	Economic
2) Lacking patient-centeredness of the approach	<ul style="list-style-type: none"> • Limited questions regarding patient status in initial assessment • Stationary assessment solutions cannot be used at bedside setting, nor outside office hours 	End-user acceptance and technical
3) Missing integrative perspective	<ul style="list-style-type: none"> • Missing overview of combined patient status across all dimensions of the value-based approach (i.e., medical, patient, and cost perspective) • Data is too spread out in different information systems 	Organizational and technical

Missing integrative perspective A further challenge was bringing these different perspectives together to promote a holistic understanding of care cycles. While medical outcomes, costs, and patient-centric outcomes are considered separately in most studies (Porter and Teisberg 2006; Porter 2008), the premise of our work is that the highest patient value arises if an integrative approach is chosen. To do so, several challenges need to be overcome or coped with that can be classified as *organizational* and *technical*. Organizationally, the perioperative process involves several clinical units and sub-disciplines such as surgical departments, anesthesiology and intensive care, rehabilitation, and more. Technically, data on medical outcomes, costs, and patient-centric outcomes is spread across different information systems requiring integration. In part, the project had to establish the respective measurement approaches first before they could be considered in an integrative way. Moreover, data structures and formats needed to be aligned in order to create an integrative analysis. While our subsequent work demonstrates potentials of doing so, further work will be necessary to fully consider the integrative perspective in daily routine on a continued basis. This will also create the baseline for interventional improvements of routine practice in an evidence-based way following the principles of value-based health care.

Quantitative results

As shown in Table 3, in the study data set the prevalence of (pre-)frailty status was 60.0%, of which 11.8% were frail and 48.2% were pre-frail. The average age was 73.53 years. The study population was 52.9% male. The average BMI was 26.81, Barthel Index 93.60, and CCI 3. Of the patients, the most prevalent procedures underwent were: orthopedic (31.6%), followed by urology, otorhinolaryngology, general/visceral, gynecology, and others. In our sample, 14.8% of the patients were active smokers, and 47.2% reported polypharmacy; 85.66% of the patients reported that they were happy.

Building block 1: Cost perspective

The results show that the clinical frailty status is associated with significantly higher in-patient treatment costs across several categories of age, gender, BMI, Barthel Index, CCI, surgical discipline, smoking status, polypharmacy, and happiness. As can be seen in Table 4, average treatment costs were higher across all categories for (pre-)frail patients (except for urology patients). Having a look at the total sample, (pre-)frail patients on average cost 4024.01 EUR more than non-frail patients undergoing surgery.

Table 3 Descriptive statistics on the frailty cost data set

Data set characteristics	n=952
Age	73.53 [73.19; 73.89]
Male	504 (52.9%)
BMI	26.81 [26.50; 27.11]
Barthel Index	93.60 [92.74; 94.46]
CCI	3.00 [2.82; 3.18]
Surgical discipline	
Orthopedic	301 (31.6%)
Urology	214 (22.5%)
Otorhinolaryngology	165 (17.3%)
General/visceral	162 (17.0%)
Gynecology	80 (8.4%)
Other	30 (3.2%)
Smoking status	
Yes, active	141 (14.8%)
No, quit	333 (35.0%)
No, never	478 (50.2%)
Polypharmacy (>5 drugs)	449 (47.2%)
Happy	816 (85.7%)
Non-frail	381 (40.0%)
Frailty status, among:	571 (60.0%)
Pre-frail	459 (48.2%)
Frail	112 (11.8%)

For age, BMI, Barthel, and CCI: Mean and in square brackets [] 95% confidence interval are given

Building block 2: Patient-centric perspective

The results in Table 5 display that the distribution of happiness on the individual level is different across frailty categories. It can be seen that while happiness was generally more prevalent in the data set, (pre-)frail people tended to be less happy.

Table 6 applies logistic regression to happiness as dependent variable. The analysis showed that (pre-)frailty status is associated with decreased happiness. The odds ratio was 0.352 for (pre-)frailty status on happiness. The model also explained a relevant portion of variance in happiness and increased against a control-only model (pseudo- $R^2 = 0.098$). This result suggests that frailty status is an important factor when considering the individual patient perspective.

Building block 3: Integrative perspective

Considering an integrative perspective, we performed a *propensity score matching* with age, gender, BMI, Barthel Index, CCI, surgical discipline, smoking status, polypharmacy, complications, length of stay (LoS), and happiness as covariates. The resulting matched samples of (pre-)frail versus non-frail patients are displayed in Table 7. The matched sample diverged in significant characteristics of interest: (pre-)frail

Table 4 Frailty-associated costs across patient groups in study sample

		Costs			p value
		Total	Non-frail	(Pre-)frail	
Age	65–69	9224.39 [6300.41; 12,148.37]	7086.88 [4966.50; 9207.26]	11,497.61 [5883.56; 17,111.67]	0.148
	70–74	7847.19 [5799.39; 9894.99]	5896.49 [4669.42; 7123.56]	9574.53 [5869.51; 13,279.54]	0.077
	75–79	8648.43 [7068.74; 10,228.12]	6215.11 [4861.35; 7568.86]	9760.43 [7553.37; 11,967.49]	0.007
	80–84	12,178.76 [8111.28; 16,246.24]	6400.33 [3481.50; 9319.17]	13,796.72 [8682.41; 18,911.03]	0.136
	85+	7799.72 [5689.75; 9909.69]	4381.00 [n.a.;n.a.]	7910.00 [5740.32; 10,079.68]	0.561
Gender	Male	8946.72 [7168.91; 10,724.52]	6325.47 [5477.72; 7173.22]	11,026.92 [7922.68; 14,131.16]	0.004
	Female	8654.38 [7294.62; 10,014.14]	6494.54 [4680.94; 8308.15]	9831.12 [7984.02; 11,678.21]	0.011
BMI	> 26	8879.22 [7565.84; 10,192.61]	6744.81 [5731.34; 7758.28]	10,190.57 [8172.48; 12,208.65]	0.003
	≤ 26	8806.88 [7168.05; 10,445.71]	6177.61 [4910.61; 7444.61]	10,722.14 [8056.68; 13,387.60]	0.003
Barthel	= 100	7606.17 [6308.04; 8904.29]	6010.14 [5353.20; 6667.07]	9321.38 [6728.13; 11,914.63]	0.015
	< 100	11,265.07 [9061.46; 13,468.67]	8947.26 [3573.22; 14,321.30]	11,705.71 [9279.13; 14,132.30]	0.352
CCI	> 2	10,969.58 [8696.58; 13,242.58]	7099.45 [5141.80; 9057.10]	13,031.87 [9722.97; 16,340.76]	0.003
	≤ 2	6928.85 [6178.80; 7678.89]	5918.07 [5199.97; 6636.18]	7742.48 [6522.16; 8962.81]	0.012
Surgical discipline	Orthopedic	9304.33 [8275.65; 10,333.01]	6849.60 [6118.08; 7581.12]	10,162.94 [8813.01; 11,512.86]	0.001
	Urology	5889.30 [5241.61; 6536.98]	6176.73 [5362.83; 6990.64]	5590.91 [4565.81; 6616.02]	0.374
	Otorhinolaryngology	3834.32 [2160.84; 5570.81]	2473.79 [2196.74; 2750.85]	5054.10 [1882.26; 8225.95]	0.111
	General/visceral	18,669.64 [12,924.44; 24,414.84]	12,287.30 [7543.71; 17,030.88]	22,837.69 [13,878.06; 31,797.32]	0.040
	Gynecology	6789.41 [4172.97; 9405.86]	5235.51 [3629.31; 6841.72]	8126.49 [3397.08; 12,855.90]	0.276
	Other	4169.87 [3667.27; 4672.47]	3741.87 [3211.79; 4271.94]	4597.87 [3732.12; 5463.61]	0.081
	Smoking status	Yes, active	6905.16 [5530.30; 8280.02]	5223.20 [3864.50; 6581.90]	8303.16 [6070.98; 10,535.33]
	No, quit	8189.73 [6823.29; 9556.17]	6239.08 [5464.44; 7013.71]	9622.24 [7333.30; 11,911.19]	0.006
	No, never	9802.30 [7788.60; 11,815.99]	6947.29 [5167.84; 8726.74]	11,466.14 [8459.83; 14,472.45]	0.011
Polypharmacy (>5 drugs)		11,392.94 [9130.33; 13,655.54]	7472.60 [4937.87; 10,007.33]	12,806.63 [9874.95; 15,738.31]	0.007
Happy		8779.51 [7486.71; 10,072.30]	6422.54 [5469.90; 7375.18]	10,612.71 [8447.77; 12,777.64]	0.001
Total		8809.15 [7672.97; 9945.32]	6395.59 [5499.40; 7291.77]	10,419.60 [8631.70; 12,207.49]	0.001

Mean and in square brackets [] 95% confidence interval are given; p value: *t*-test two-tailed; bold values *p* < 0.05

patients were significantly older, more often female, had a lower Barthel Index, more often underwent orthopedic or urological surgeries, more often qualified for polypharmacy (> 5 drugs), had experienced a longer stay, more complications, and were less happy.

Based on the calculated propensity scores, we performed independent-sample *t*-tests to determine the frailty effect on costs with and without matching. The results in Table 8 show a significant difference between costs for non-frail versus (pre-)frail patients. The average cost difference between non-

Table 5 Individual patient attributes by frailty status

	All patients	Happy=0	Happy=1
Non-frail	381 (40.0%)	24 (6.3%)	357 (93.7%)
(Pre-)frail	571 (60.0%)	112 (19.6%)	459 (80.4%)
Total	952 (100%)	136 (14.3%)	816 (85.7%)

Absolute frequencies (*N*) and in brackets the relative frequencies are given

frail and (pre-)frail patients was 3583.01 EUR in the propensity score-matched sample. It was 4024.01 EUR in the unmatched sample. The effect size Cohen's *d* (Cohen 1988) is 0.26 in the matched sample; it was 0.24 in the unmatched sample, accounting for a weak but considerable relationship.

Discussion

Barriers to implementation and coping strategies

Our analysis has underlined the importance of the barrier categories identified in Harst et al. (2019), deepening the work by van Dyk (2014). Our research has identified three challenges which emerged from the consequential implementation of a value-based health care approach, namely consideration of the *cost perspective*, the *patient-centric perspective*, and the *integrative perspective*, complementing the *medical perspective*

Table 6 Regression on happiness by frailty status and covariates

	Model 1 Controls only	Model 2 (Pre-)frail
Independ. var.	DV=happiness	
(Pre-)frail_bin		-1.045*** (0.352)
Covariates		
Gender	-0.192 (0.825)	-0.131 (0.877)
Barthel <100	1.026*** (2.790)	0.757*** (2.132)
Comorbid. ≥ 1	-0.341 (0.711)	-0.311 (0.733)
Age	0.01 (1.001)	0.014 (1.014)
Intercept	1.653 (5.221)	1.528 (4.608)
N	952	952
df	3	4
Pseudo-R ²	0.063	0.098

† $p < 0.10$, * $p < 0.05$, ** $p < 0.01$, *** $p < 0.001$, in brackets (): Odds ratio

identified in earlier work (Birkelbach et al. 2019). From the analysis it became clear that these three dimensions represent overarching goals guiding the implementation. Making progress in each of these dimensions meant coping with deep-seated organizational, technical, end-user acceptance, and economic obstacles. *Organizationally*, it became clear that implementing the approaches meant implementing new means of evaluation, quality management, and measurement, and also that of collecting data that was previously untapped or scattered across different information systems. *Technically*, it required creating new tools, such as a research study database, or desktop application solutions to support information gathering and analysis as well as the integration of information from different information systems. From an *end-user acceptance viewpoint*, while the initially implemented solutions focused on medical outcomes, consideration of the patient perspective required additional digital health solutions such as developing a tablet app for nurse assistants and a mobile app for patient self-assessment. *Economically*, it became clear that varying incentives for usage of the approach hindered widespread adoption of the approach, such that feasibility studies demonstrating the utility of the approach were necessary to foster stakeholder buy-in.

Reflecting on the progress achieved so far, it becomes clear that implementing a value-based health care approach using digital health solutions should be considered as a *process*. Our study shows that each of the steps taken along the implementation process face barriers and tensions that may not be easy to resolve. The successful implementation of the approach meant finding ways to *cope with* these tensions rather than resolving them completely. Adding constant reflections on possible challenges and barriers arising further maximizes the chance of continuous progress. For instance, whereas the full-scale implementation of the approach within all steps involving different clinics would have been desirable, it was easier to initially emulate the approach within one clinic in order to demonstrate its potential and roll it out on a more widespread basis in a later step. Against this background, future work could thus consider tensions and barriers in this process in more detail by adopting a dialectical or paradoxical process perspective (Smith and Lewis 2011; Cloutier and Langley 2020).

Potentials of value-based health care approach to tackle the frailty burden

We have created initial evidence for the usefulness of an integrative value-based health care approach for tackling the frailty burden in perioperative care. The results show that costs in inpatient treatment are significantly associated with frailty status. Prevalence of frailty was 11.8% (frail) and 48.2% (pre-frail), which is slightly higher than in previous studies (e.g. systematic review by Collard et al. 2012). In a similar study

Table 7 Propensity score matching

	All patients (n=952)			PS-Matched patients (n=762)		
	Non-frail (n=381)	(Pre-)frail (n=571)	p value	Non-frail (n=381)	(Pre-)frail (n=381)	p value
Age	71.85 [71.39; 72.31]	74.67 [74.19; 75.15]	0.001	71.85 [71.39; 72.31]	74.52 [73.93; 75.11]	0.001
Male	223 (59%)	281 (49%)	0.005	223 (58.5%)	193 (50.7%)	0.029
BMI	26.60 [26.15; 27.04]	26.95 [26.54; 27.36]	0.275	26.60 [26.15; 27.04]	27.02 [26.51; 27.53]	0.223
Barthel Index	98.78 [98.32; 99.24]	90.14 [88.82; 91.46]	0.001	98.78 [98.32; 99.24]	89.76 [88.06; 91.46]	0.001
CCI	2.61 [2.37; 2.86]	3.26 [3.00; 3.51]	0.001	2.61 [2.37; 2.86]	3.35 [3.02; 3.68]	0.001
Surgical discipline						
Orthopedic	78 (20.5%)	223 (39.1%)	0.001	78 (20.5%)	154 (40.4%)	0.001
Urology	109 (28.6%)	105 (18.4%)	0.001	109 (28.6%)	70 (18.4%)	0.001
Otorhinolaryngology	78 (20.5%)	87 (15.2%)	0.037	78 (20.5%)	52 (13.6%)	0.012
General/visceral	64 (16.8%)	98 (17.2%)	0.883	64 (16.8%)	68 (17.8%)	0.702
Gynecology	37 (9.7%)	43 (7.5%)	0.235	37 (9.7%)	26 (6.8%)	0.148
Other	15 (3.9%)	15 (2.6%)	0.257	15 (3.9%)	11 (2.9%)	0.425
Smoking status						
Yes, active	64 (16.8%)	77 (13.5%)	0.159	64 (16.8%)	55 (14.4%)	0.370
No, quit	141 (37.0%)	192 (33.6%)	0.284	141 (37.0%)	128 (33.6%)	0.325
No, never	176 (46.2%)	302 (52.9%)	0.043	176 (46.2%)	198 (52.0%)	0.111
Polypharmacy (> 5 drugs)	119 (31.2%)	330 (57.8%)	0.001	119 (31.2%)	227 (59.6%)	0.001
Length of stay (LoS)	7.93 [7.37; 8.49]	10.97 [10.18; 11.75]	0.001	7.93 [7.37; 8.49]	11.02 [10.24; 11.81]	0.001
Complications	63 (16.5%)	197 (34.5%)	0.001	63 (16.5%)	131 (34.4%)	0.001
Happiness	357 (93.7%)	459 (80.4%)	0.001	357 (93.7%)	309 (81.1%)	0.001

also using the Fried criteria to determine frailty status, Saum et al. (2012) found prevalence of frailty as 58% pre-frail and 8.9% frail. The values obtained are probably higher due to the fact that assessment took place within a university hospital setting for patients scheduled for surgery, while other studies had occurred in a routine setting.

While previous research has considered medical outcomes, showing frailty to be associated with postoperative complications (e.g., Birkelbach et al. 2019), the cost, patient, and integrative perspective has so far only received limited attention. Sirven and Rapp (2017) discuss the outpatient costs for patients 65 years of age and older in the French health care system during 2012 and differentiate them according to frailty categories. According to this study, pre-frail patients incur an additional 750 EUR and frail patients 1500 EUR in expenses on average. Our study finds additional costs of 3583.01 [1654.92; 5511.04] EUR for (pre-)frail patients. These are inpatient costs in the hospital and do not amount to the entire

frailty burden. Having demonstrated that frailty is associated with significantly higher costs should motivate care deliverers to consider costs in a broader context.

We have also shown how additional assessment categories, for instance, happiness, can add to the patient perspective measuring important aspects of the individual patient status. As we could only access data on the general psychological status of our study population, results on disease-specific indicators are missing and should be investigated in more detail during the process of collecting data as, for instance, by using standardized outcome sets such as the ones by ICHOM (2021). We could show significant differences in costs depending on individual patient characteristics in terms of happiness, which further research should explore in more detail. Further research should also determine ways to constantly track patient-centric outcome measures in the perioperative process related to frailty as was piloted through the described patient app.

Table 8 Frailty effect on costs with/without matching

	Non-frail	(Pre-)frail	T	Diff. avg. [95% CI]	p value
Without matching	6395.59	10,419.60	-3.953	4024.01 [2025.78; 6022.24]	0.001
Propensity score matching	6395.59	9978.59	-3.650	3583.01 [1654.92; 5511.04]	0.001

Limitations

The main limitations of the study were as follows: Firstly, probands in the retrospective observational study were not selected at random, and therefore we used propensity score matching. Propensity score matching does not fully compensate for non-randomization, calling for future controlled trials. Secondly, while variables such as polypharmacy were assessed, the information came from patient self-reports; it was not recorded, for instance, which medications were used that might correlate with frailty or relevant study outcomes. Since some medications pose higher risks for elderly and frail patients (e.g., Holt et al. 2010), this should be relevant information for interventional studies. Thirdly, the included patient-reported measures only reflected a selection of important possible measures and should be extended in the future by data on measures of emotional health (beyond happiness), loneliness and isolation, pain, and autonomy (see e.g., ICHOM 2021 quality of life outcomes for elderly person). Finally, while we could access rich qualitative data, further formal interviews could provide further insights if they add other groups such as patients.

Conclusion

This study considered *the implementation of value-based health care principles in the context of frailty in the peri-operative process vis-à-vis digital health solutions*. Based on a sequential mixed-methods study, we first qualitatively identified three challenges when implementing a value-based health care approach in the context of elderly adults undergoing surgery, namely (1) the appropriate consideration of related costs, (2) a patient-centric outcome, and (3) an integrative perspective. Demonstrating the value of such an approach in the context of Charité's Department of Anesthesiology and Intensive Care Medicine, we have used quantitative data from $n = 952$ patients and processed them via propensity score matching to show additional frailty-associated costs in inpatient treatment as well as the influence of individual patient-centric attributes.

In the future, it will be desirable to include both medical and patient-reported outcomes and costs in one integrative solution, which coincides with a current project to scale this assessment towards other settings and to take preparatory actions for patients identified as having high postoperative risks. These next steps will also require tackling further barriers, including collaboration between ambulant and clinical stakeholders, interprofessional collaboration, and capacity constraints, which have initially led to coping strategies such as

integrating the assessment-related activities into the workflow of one clinic that could mobilize the resources to carry it out.

Acknowledgements We would like to thank five medical doctoral candidates (ALH, JK, HR, IW, JW) for their assistance in data collection, as well as Kathrin Scholtz for her assistance in project management and quality assurance. We thank Gina Genseler for support regarding the patient-centric apps within her Bachelor thesis. Dr. Oliver Birkelbach made important contributions in setting up the frailty assessment questionnaire/procedure.

Author's contribution DF, HMH and FB conceptualized the work. DF, TW, KS and FB conceived the methodology. DF, TW and KS carried out the formal analysis and investigation. DF and HMH wrote the original draft; all other authors reviewed and edited the draft. CS acquired funding and resources for the project. DF and FB supervised TW within the original scope of the project.

Funding Open Access funding enabled and organized by Projekt DEAL. The analysis is part of a quality improvement effort from the Department of Anesthesiology and Operative Intensive Care Medicine of the Charité Universitätsmedizin – Berlin, Campus Mitte and Virchow-Klinikum. No external funding was required for it. Daniel Fürstenau and Felix Balzer received funding from the Einstein Foundation for independent research within the broad area of research, which is thankfully acknowledged.

Data availability The data sets used and analyzed during the current study are available from the corresponding author on reasonable request.

Declarations

Conflict of interest The authors have no relevant conflicts of interest to disclose.

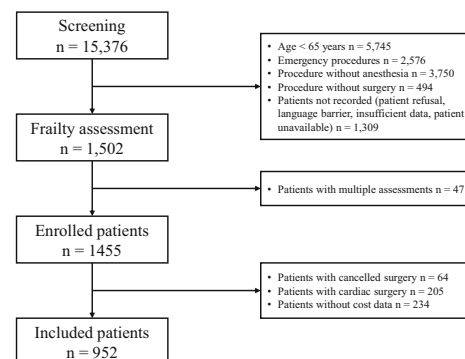
Ethics approval The analysis was covered by the ethics committee (EA1/227/16) of the Charité Universitätsmedizin – Berlin, Berlin, Germany.

Consent to participate Not applicable.

Consent for publication Not applicable.

Appendix

Appendix 1 – Flow Chart



Open Access This article is licensed under a Creative Commons Attribution 4.0 International License, which permits use, sharing, adaptation, distribution and reproduction in any medium or format, as long as you give appropriate credit to the original author(s) and the source, provide a link to the Creative Commons licence, and indicate if changes were made. The images or other third party material in this article are included in the article's Creative Commons licence, unless indicated otherwise in a credit line to the material. If material is not included in the article's Creative Commons licence and your intended use is not permitted by statutory regulation or exceeds the permitted use, you will need to obtain permission directly from the copyright holder. To view a copy of this licence, visit <http://creativecommons.org/licenses/by/4.0/>.

References

- Baskerville RL (1999) Investigating information systems with action research. *Commun AIS* 2:19. <https://doi.org/10.17705/icaais.00219>
- Becker H, Geer B (1957) Participant observation and interviewing: a comparison. *Hum Organ* 16:28–32. <https://doi.org/10.17730/humo.16.3.k687822132323013>
- Birkelbach O, Mörgeli R, Balzer F, Olbert M, Treskatsch S, Kieffmann R et al (2017) Warum und wie sollte ich Frailty erfassen? – ein Ansatz für die Anästhesieambulanz. *AINS – Anästhesiologie, Intensivmedizin, Notfallmedizin, Schmerztherapie* 52:765–776. <https://doi.org/10.1055/s-0043-104682>
- Birkelbach O, Mörgeli R, Spies C, Olbert M, Weiss B, Brauner M, Neuner B, Francis RCE, Treskatsch S, Balzer F (2019) Routine frailty assessment predicts postoperative complications in elderly patients across surgical disciplines – a retrospective observational study. *BMC Anesthesiol* 19:204. <https://doi.org/10.1186/s12871-019-0880-x>
- Buckinx F, Rolland Y, Reginster JY, Ricour C, Petermans J, Bruyère O (2015) Burden of frailty in the elderly population: perspectives for a public health challenge. *Arch Public Heal* 73:19. <https://doi.org/10.1186/s13690-015-0068-x>
- Charlson ME, Pompei P, Ales KL, MacKenzie CR (1987) A new method of classifying prognostic comorbidity in longitudinal studies: development and validation. *J Chronic Dis* 40:373–383. [https://doi.org/10.1016/0021-9681\(87\)90171-8](https://doi.org/10.1016/0021-9681(87)90171-8)
- Chaudhary M (2018) Association of food insecurity with frailty among older adults in India. *Aust J Public Health* 26:321–330. <https://doi.org/10.1007/s10389-017-0866-4>
- Cloutier C, Langley A (2020) What makes a process theoretical contribution? *Organ Theory* 1:1–32. <https://doi.org/10.1177/2631787720902473>
- Cohen J (1988) *Statistical power analysis for the behavioral sciences*. Routledge Academic, New York
- Collard RM, Boter H, Schoevers RA, Oude Voshaar RC (2012) Prevalence of frailty in community-dwelling older persons: a systematic review. *J Am Geriatr Soc* 60:1487–1492. <https://doi.org/10.1111/j.1532-5415.2012.04054.x>
- Creswell JW, Creswell JD (2018) *Research design: qualitative, quantitative, and mixed methods approaches*, 5th edn. Sage Publications, Thousand Oaks
- Dedeyne L, Deschodt M, Verschueren S, Tournoy J, Gielen E (2017) Effects of multi-domain interventions in (pre)frail elderly on frailty, functional, and cognitive status: a systematic review. *Clin Interv Aging* 12:873–896. <https://doi.org/10.2147/CIA.S130794>
- Dent E, Hoogendijk EO (2014) Psychosocial factors modify the association of frailty with adverse outcomes: a prospective study of hospitalised older people. *BMC Geriatr* 14:108. <https://doi.org/10.1186/1471-2318-14-108>
- Dewey M (2018) The future of radiology: adding value to clinical care. *Lancet* 392(10146):472–473. [https://doi.org/10.1016/S0140-6736\(18\)31193-0](https://doi.org/10.1016/S0140-6736(18)31193-0)
- Feinkohl I, Winterer G, Pischon T (2017) Hypertension and risk of post-operative cognitive dysfunction (POCD): a systematic review and meta-analysis. *Clin Pract Epidemiol Ment Health* 13:27–42. <https://doi.org/10.2174/1745017901713010027>
- Freitag S, Schmidt S (2016) Psychosocial correlates of frailty in older adults. *Geriatrics* 1:26. <https://doi.org/10.3390/geriatrics1040026>
- Freitag S, Schmidt S, Gobbens RJJ (2016) Tilburg Frailty Indicator: Eine deutsche Übersetzung und psychometrische Testung. *Z Gerontol Geriatr* 49:86–93. <https://doi.org/10.1007/s00391-015-0889-9>
- Fried LP, Tangen CM, Walston J et al (2001) Frailty in older adults: evidence for a phenotype. *J Gerontol Ser A Biol Sci Med Sci* 56: M146–M156. <https://doi.org/10.1093/gerona/56.3.m146>
- Fürstenauf D, Spies C, Gersch M, Vogel A, Mörgeli R, Poncette AS, Müller-Werdan U, Balzer F (2019) Sharing frailty-related information in perioperative care: an analysis from a temporal perspective. *BMC Health Serv Res* 19:105. <https://doi.org/10.1186/s12913-019-3890-y>
- Harris PA, Taylor R, Thielke R, Payne J, Gonzalez N, Conde JG (2009) Research electronic data capture (REDCap)—a metadata-driven methodology and workflow process for providing translational research informatics support. *J Biomed Inform* 42:377–381. <https://doi.org/10.1016/j.jbi.2008.08.010>
- Harst L, Timpel P, Otto L, Richter P, Wollschlaeger B, Winkler K, Schlieter H (2019) Identifying barriers in telemedicine-supported integrated care research: scoping reviews and qualitative content analysis. *Aust J Public Health* 28:583–594. <https://doi.org/10.1007/s10389-019-01065-5>
- Holt S, Schmiedl S, Thümann PA (2010) Potentially inappropriate medications in the elderly: the PRISCUS list. *Dtsch Arztebl Int* 107:543–551. <https://doi.org/10.3238/arztebl.2010.0543>
- ICHOM (2021) International Consortium for Health Outcome Measures. <https://www.ichom.org>. Accessed 14 May 2021
- Karsten MM, Speiser D, Hartmann C, Zeuschner N, Lippold K, Kiver V, Gocke P, Kirchberger V, Blohmer JU (2018) Web-based patient-reported outcomes using the international consortium for health outcome measurement dataset in a major German university hospital: observational study. *JMIR Cancer* 4(2):e11373. <https://doi.org/10.2196/11373>
- Langley A (1999) Strategies for theorizing from process data. *Acad Manag Rev* 24:691–710. <https://doi.org/10.5465/AMR.1999.2553248>
- Liu CK, Fielding RA (2011) Exercise as an intervention for frailty. *Clin Geriatr Med* 27:101–110. <https://doi.org/10.1016/j.cger.2010.08.001>
- Mahoney FI, Barthel DW (1965) Functional evaluation: the Barthel index: a simple index of independence useful in scoring improvement in the rehabilitation of the chronically ill. *Maryland State Med J* 14: 61–65
- Miles MB, Huberman AM (1994) *Qualitative data analysis: an expanded sourcebook*, 2nd edn. Sage Publications, Thousand Oaks
- Porter ME (2008) Value-based health care delivery. *Ann Surg* 248:503–509. <https://doi.org/10.1097/SLA.0b013e31818a43af>
- Porter ME, Teisberg EO (2006) *Redefining health care: creating value-based competition on results*. Harvard Business Review Press, Boston
- Saum KU, Müller H, Stegmaier C, Hauer K, Raum E, Brenner H (2012) Development and evaluation of a modification of the Fried frailty

- criteria using population-independent cutpoints. *J Am Geriatr Soc* 60:2110–2115. <https://doi.org/10.1111/j.1532-5415.2012.04192.x>
- Schreyögg J, Tiemann O, Busse R (2006) Cost accounting to determine prices: how well do prices reflect costs in the German DRG-system? *Health Care Manag Sci* 9:269–279. <https://doi.org/10.1007/s10729-006-9094-0>
- Sirven N, Rapp T (2017) The cost of frailty in France. *Eur J Health Econ* 18:243–253. <https://doi.org/10.1007/s10198-016-0772-7>
- Smith W, Lewis M (2011) Toward a theory of paradox: a dynamic equilibrium model of organizing. *Acad Manag Rev* 36:381–403. <https://doi.org/10.5465/amr.2009.0223>
- Statistisches Bundesamt (2018) Fallpauschalenbezogene Krankenhausstatistik (DRG-Statistik) Operationen und Prozeduren der vollstationären Patientinnen und Patienten in Krankenhäusern. <https://www.destatis.de/DE/Themen/Gesellschaft-Umwelt/Gesundheit/Krankenhaeuser/Publikationen/Downloads-Krankenhaeuser/operationen-prozeduren-5231401187014.html>. Accessed 14 May 2021
- van Dyk L (2014) A review of telehealth service implementation frameworks. *Int J Environ Res Public Health* 11:1279–1298. <https://doi.org/10.3390/ijerph110201279>
- Winterer G, Androsova G, Bender O et al (2018) Personalized risk prediction of postoperative cognitive impairment – rationale for the EU-funded BioCog project. *Eur Psychiatry* 50:34–39. <https://doi.org/10.1016/j.eurpsy.2017.10.004>
- Xue QL (2011) The frailty syndrome: definition and natural history. *Clin Geriatr Med* 27:1–15. <https://doi.org/10.1016/j.cger.2010.08.009>

Publisher's note Springer Nature remains neutral with regard to jurisdictional claims in published maps and institutional affiliations.