


# Eicosanoid biosynthesis in marine mammals

Florian Reisch, Kumar Reddy Kakularam, Sabine Stehling, Dagmar Heydeck and Hartmut Kuhn 

Institute of Biochemistry, Charité – University Medicine Berlin, Corporate member of Free University Berlin, Humboldt University Berlin and Berlin Institute of Health, Berlin, Germany

## Keywords

eicosanoids; epidermal differentiation; evolution; fatty acids; lipoxygenases; oxidative stress

## Correspondence

H. Kuhn, Institute of Biochemistry (CC2), Charité - University Medicine Berlin, Charitéplatz 1, 10117 Berlin, Germany  
 Email: hartmut.kuehn@charite.de

(Received 9 December 2019, revised 19 May 2020, accepted 22 June 2020)

doi:10.1111/febs.15469

After 300 million years of evolution, the first land-living mammals reentered the marine environment some 50 million years ago. The driving forces for this dramatic lifestyle change are still a matter of discussion but the struggle for food resources and the opportunity to escape predators probably contributed. Reentering the oceans requires metabolic adaptation putting evolutionary pressure on a number of genes. To explore whether eicosanoid signaling has been part of this adaptive response, we first explored whether the genomes of marine mammals involve functional genes encoding for key enzymes of eicosanoid biosynthesis. Cyclooxygenase (COX) and lipoxygenase (ALOX) genes are present in the genome of all marine mammals tested. Interestingly, ALOX12B, which has been implicated in skin development of land-living mammals, is lacking in whales and dolphins and genes encoding for its sister enzyme (ALOXE3) involve premature stop codons and/or frameshifting point mutations, which interrupt the open reading frames. ALOX15 orthologs have been detected in all marine mammals, and the recombinant enzymes exhibit similar catalytic properties as those of land-living species. All marine mammals express arachidonic acid 12-lipoxygenating ALOX15 orthologs, and these data are consistent with the Evolutionary Hypothesis of ALOX15 specificity. These enzymes exhibit membrane oxygenase activity and introduction of big amino acids at the triad positions altered the reaction specificity in favor of arachidonic acid 15-lipoxygenation. Thus, the ALOX15 orthologs of marine mammals follow the Triad concept explaining their catalytic specificity.

## Introduction

Marine mammals form a diverse group of mammalian species that heavily rely on aquatic environments for their existence [1,2]. These animals do not represent a distinct taxon, and some marine mammalian species are more closely related to land-living relatives from the evolutionary point of view [3–5]. The most

important classifying parameter for marine mammals is their reliance on the marine environment for feeding [6]. According to their evolutionary relatedness, more than 100 marine mammalian species are classified into five different groups: (i) whales and dolphins (*Cetaceans*), (ii) sea cows (*Sirenians*), (iii) seals, sea lions,

## Abbreviations

11-H(p)ETE, 11-hydro(pero)xy-5Z,8Z,10E,14Z-eicosatetraenoic acid; 12-H(p)ETE, 12-hydro(pero)xy-5Z,8Z,10E,14Z-eicosatetraenoic acid; 13-H(p)ODE, 13-hydro(pero)xy-9Z,11E-octadecadienoic acid; 15-H(p)ETE, 15-hydro(pero)xy-5Z,8Z,11Z,13E-eicosatetraenoic acid; 5-HpETE, 5-hydro(pero)xy-6E,8Z,11Z,14Z-eicosatetraenoic acid; 7-HpETE, 7-hydro(pero)xy-5Z,8Z,11Z,14Z-eicosatetraenoic acid; 8-HETE, 8-hydro(pero)xy-5Z,9E,11Z,14Z-eicosatetraenoic acid; 9-H(p)ETE, 9-hydro(pero)xy-5Z,7E,11Z,14Z-eicosatetraenoic acid; 9-H(p)ODE, 9-hydro(pero)xy-10E,12Z-octadecadienoic acid; ALOX, arachidonic acid lipoxygenase; ALOX12, arachidonic acid lipoxygenase 12 (platelet-type 12-LOX); ALOX12B, arachidonic acid lipoxygenase 12B (12R-LOX); ALOX15, arachidonic acid lipoxygenase 15 (12/15-LOX); ALOX15B, arachidonic acid lipoxygenase 15B (15-LOX2); ALOX5, arachidonic acid lipoxygenase 5 (5-LOX); ALOXE3, epidermal arachidonic acid lipoxygenase 3 (epidermal LOX3); COX, cyclooxygenase; CP-HPLC, chiral-phase high-performance liquid chromatography; NP-HPLC, normal-phase high-performance liquid chromatography; RP-HPLC, reverse-phase high-performance liquid chromatography; SMP, submitochondrial particles.

and walruses (*Pinnipeds*), (iv) sea otters (*Musteloidea*), and (v) polar bears (*Ursidae*). There are considerable differences between these species with respect to the level of dependence on the marine environment. Whales and dolphins strongly depend on an aquatic environment since they spend all stages of their lives in water and cannot survive on land. In contrast, seals, sea lions, and walruses feed in the water but breed and rest on land. Polar bears spend most of their time out of the water. In fact, they feed and reproduce on land or ice but looking for food, they occasionally enter the water. All marine mammals evolved from land-living animals millions of years ago [4]. For instance, whales and dolphins became aquatic some 50 million years ago [4] and comparative studies indicated that land-living even-toed ungulates and whales share a common ancestor [7]. In fact, among extant mammals hippopotamus is the closest relative for whales and dolphins [8]. Sea cows and pinnipeds (seals, sea lions, walruses) reentered the water 40 and 20 million years ago, respectively [4,9]. In contrast, sea otters are relative newcomers in marine life. About 2 million years ago, they evolved in the North Pacific and then spread down to the North American coast [4]. Although these animals reentered the marine environment only recently, they appear to be better adapted to aquatic life than seals, sea lions, and walruses, which must leave the water to give birth. Polar bears have diverged from a certain population of brown bears, which became isolated during pleistocenic glaciations [10,11]. Comparison of the mitochondrial DNA of polar bears and brown bears suggested that the two species diverged some 150 000 years ago and that some brown bear subspecies are more closely related to polar bears than to other brown bear subspecies. Despite this close evolutionary relation, polar bears are considered marine mammals but brown bears are not.

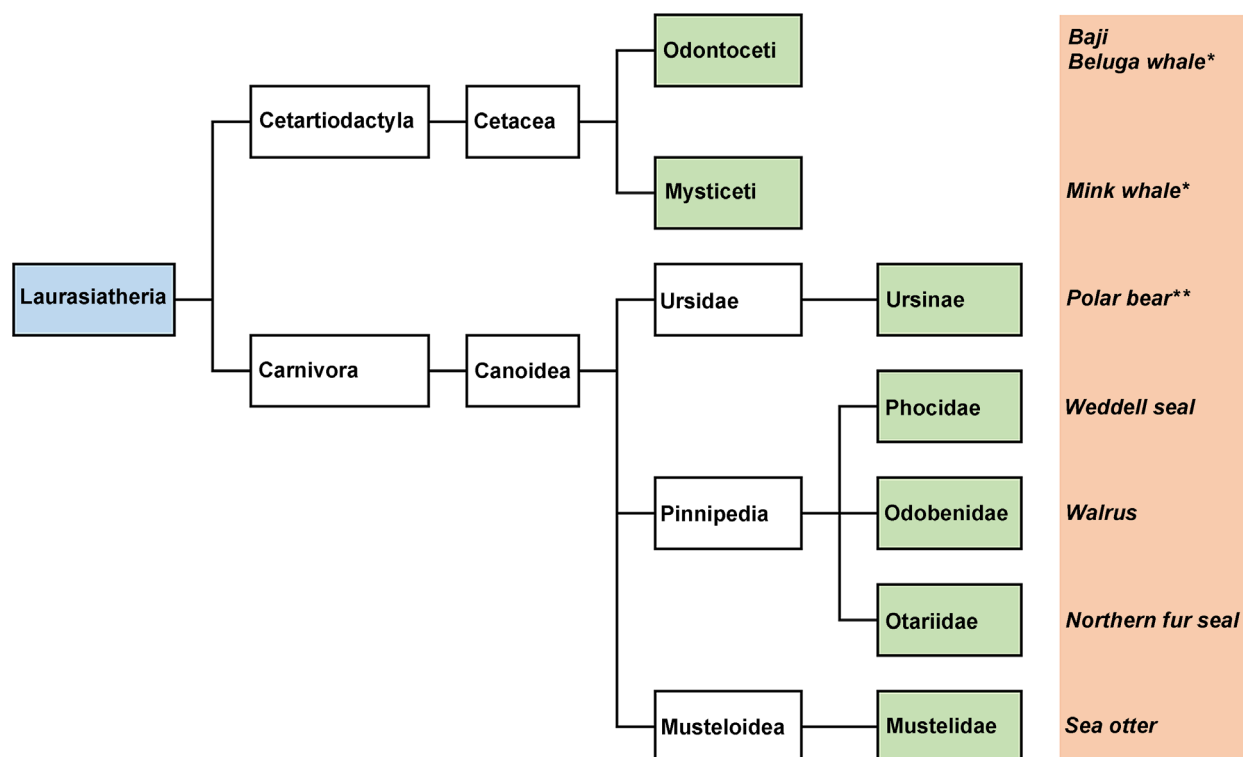
Eicosanoids and related compounds are lipid-signaling molecules, which have been implicated in cell physiology and in the pathogenesis of hyperproliferative, inflammatory, and neurodegenerative diseases [12–14]. They are biosynthesized from arachidonic acid and other polyenoic fatty acids (PUFAs) *via* three different pathways: (i) cyclooxygenase (COX) pathway leading to the formation of pro-inflammatory prostaglandins [15], (ii) lipoxygenase (ALOX) pathway leading to the formation of pro-inflammatory leukotrienes, but also to anti-inflammatory mediators such as resolvins and maresins [16], and (iii) cytochrome P450 (Cyt450) pathway leading to the formation of epoxyeicosanoids and vicinal fatty acid diols [17]. Although these biosynthetic pathways are well characterized in

humans and other land-living mammals, little is known on eicosanoid biosynthesis in aquatic mammals. A PubMed search using the keywords ‘marine mammals’ and ‘lipoxygenase’ revealed some 70 hits but neither of these papers characterized the lipoxygenase pathway in marine mammals. In fact, to the best of our knowledge, it has never been explored systematically whether ALOX and COX isoforms do actually occur in aquatic mammals. To fill this gap, we first screened different publicly available sequence databases for ALOX- and COX-like sequences in marine mammals. Since we observed widespread occurrence of the two classes of enzymes in these animals, we selected species representing different subfamilies of marine mammals, for which complete ALOX15 sequences were available. These enzymes were expressed in pro- and eukaryotic overexpression systems and were characterized with respect to their catalytic properties. We found that all tested marine mammals express arachidonic acid 12-lipoxygenating ALOX15 orthologs and no 15-lipoxygenating enzymes could be identified. Thus, ALOX15 orthologs follow the Evolutionary Hypothesis of ALOX15 specificity. Since introduction of more space-filling amino acids at the triad positions altered the reaction specificity in favor of arachidonic acid 15-lipoxygenation, the enzymes follow the Triad concept.

## Results

### Classification of marine mammals and their evolutionary relatedness

Mammals (*Theria*) are classified into three major subfamilies (*Prototheria*, *Metatheria*, and *Eutheria*), and *Eutheria* are subdivided into *Xenarthra*, *Afrotheria*, *Euarchontoglires*, and *Laurasiatheria*. Sea cows are marine mammals, which are classified as *Afrotheria* and these animals are closely related to the African Elephant. In contrast, most extant marine mammals are classified as *Laurasiatheria*. These animals originated from the northern supercontinent *Laurasiatheria* involve several land-living species such as shrews, even-toed and odd-toed ungulates, pangolins, and large predators, but also marine mammals, such as whales and dolphins. Moreover, the large predators also involve a number of marine mammals such as seals, walruses, sea bears, and polar bears. In Fig. 1, a systematic representation of different laurasiaterian marine mammals and their evolutionary relation is given. This image also summarizes those laurasiaterian marine mammals, which were selected for more detailed structural and functional investigations.



**Fig. 1.** Evolutionary relations of laurasiatherian marine mammals. Most marine mammals are classified as *Laurasiatheria*. *Cetacea* and *Canoidea* represent two major subcategories of marine mammals, and we selected the species given on orange background for functional studies. \*For the species marked with an asterisk, we retrieved complete ALOX15 sequences but the enzymes are not expressed in pro- and eukaryotic expression systems. \*\*The ALOX15 sequence of the polar bear is incomplete, and thus, this enzyme could neither be expressed. However, the available sequences for these enzymes allowed prediction of the reaction specificity based on the Triad concept.

### Database searches and sequence alignments of eicosanoid-synthesizing enzymes

Although eicosanoids are known as physiologically relevant lipid mediators for more than 50 years, little is known about the biological relevance of these compounds in marine mammals. To explore the eicosanoid-synthesizing capacity of different marine mammals, we first screened the publicly available sequence databases (protein databases, genome databases) for the presence of cyclooxygenase (COX1, COX2) and lipoxygenase (ALOX15, ALOX15B, ALOX12, ALOX12B, ALOXE3, ALOX5) genes and judged the functionality of the corresponding enzymes identifying catalytically relevant amino acids.

Cyclooxygenases constitute key enzymes in the biosynthesis of prostaglandins, which have been implicated in a large number of physiological and pathophysiological processes [18–21]. The crystal structure of bovine COX1 has been solved [20], and dual amino acid sequence alignment with human COX1 identified catalytically important amino acids in the human ortholog (Table 1). Tyr384 is essential for the

stereoselective hydrogen abstraction, which constitutes the rate-limiting step of the COX reaction. His206 (proximal) and His387 (distal) function as heme-binding ligands and, thus, are important for the peroxidase activity of this enzyme. COX1 is constitutively expressed in a large number of cells and tissues and is involved in the biosynthesis of physiological prostaglandins [18,21]. When we searched the public sequence databases (protein sequences and genomic sequences), we found that COX1 genes are present in all marine mammals tested (Table 1). Dual amino acid sequence alignments with human COX1 (Fig. S1a–n) indicated that the degree of amino acid identity of the identified COX1 orthologs with human COX1 varied between 50 and 90%. Moreover, in all sequences the catalytically important amino acids are conserved (Table 1) and these data suggested that the database sequences represent catalytically active enzymes.

COX2 is an inducible enzyme, which is expressed at high levels in stimulated inflammatory cells [18,19,21]. It is responsible for the biosynthesis of pro-inflammatory prostaglandins, and selective COX2 inhibitors have

**Table 1.** Presence of COX1 in different marine mammals. The amino acid sequences of the COX1 orthologs of different marine mammals were extracted from the protein database of the different mammals, and sequences were crosschecked using the corresponding genomic sequences. If required, corrections were introduced into the amino acid sequences based on the genomic data (\*). In order to quantify the degree of amino acid conservation and to identify functionally relevant residues, dual amino acid sequence alignments were carried out with human COX1 (Fig. S1a-n). The deposited sequence of the polar bear and Weddell seal COX1 genes were incomplete (exons 1 + 2 are lacking), which might be related to a sequencing artifact.

| Species                     | Accession number | Size <sup>a</sup> | Hydrogen abstraction | Heme-binding ligands |
|-----------------------------|------------------|-------------------|----------------------|----------------------|
| Human                       | NP_000953.2      | 599               | Y384                 | H206 + H387          |
| Sperm whale                 | XP_028349354.1   | 599*              | Y384                 | H206 + H387          |
| Narwhale                    | XP_029059492.1   | 601*              | Y386                 | H208 + H389          |
| Long-finned pilot whale     | XP_030714606.1   | 599*              | Y384                 | H206 + H387          |
| Minke whale                 | XP_007178145.1   | 599*              | Y384                 | H206 + H387          |
| Killer whale                | XP_004269299.1   | 599*              | Y384                 | H206 + H387          |
| Beluga whale                | XP_022434509.1   | 599*              | Y384                 | H206 + H387          |
| Finless porpoise            | XP_024618000.1   | 599*              | Y384                 | H206 + H387          |
| Baiji                       | XP_007468427.1   | 599*              | Y384                 | H206 + H387          |
| Pacific white-sided dolphin | XP_026960744.1   | 599*              | Y384                 | H206 + H387          |
| Weddell seal                | XP_006739552.2   | 568               | Y353                 | H175 + H356          |
| Northern fur seal           | XP_025743822.1   | 600*              | Y385                 | H207 + H388          |
| Walrus                      | XP_004411631.1   | 632               | Y417                 | H239 + H420          |
| Sea otter                   | XP_022356773.1   | 634               | Y418                 | H240 + H421          |
| Polar bear                  | XP_008697028.1   | 568*              | Y353                 | H175 + H356          |

<sup>a</sup>Number of amino acids.

been developed as potent anti-inflammatory drugs [22,23]. Functional COX2 genes were detected in all tested marine mammals, and the degree of amino acid identity with human COX2 varied between 70 and 90 % (Table 2). Dual amino acid sequence alignments with human COX2 (Fig. S2a-n) indicated that in the extracted sequences, functionally important amino acids are conserved and these data suggest functionality of these genes and the corresponding enzymes.

ALOX15 is one of the six human ALOX isoforms. It has been implicated in cell differentiation and

**Table 2.** Presence of COX2 in different marine mammals. The amino acid sequences of the COX2 orthologs of different marine mammals were extracted from the protein databases of the different mammals and from genome databases. Deposited protein sequences were crosschecked using the corresponding genomic sequences. \*If required, minor corrections were introduced into the amino acid sequences based on the genomic data. In order to quantify the degree of amino acid conservation and to identify functionally relevant residues, dual amino acid sequence alignments were carried out with human COX2 (Fig. S2a-n).

| Species                     | Accession number | Size <sup>a</sup> | Hydrogen abstraction | Heme-binding |
|-----------------------------|------------------|-------------------|----------------------|--------------|
| Human                       | NP_000954.1      | 604               | Y371                 | H193 + H374  |
| Sperm whale                 | XP_007115359.2   | 604               | Y371                 | H193 + H374  |
| Narwhale                    | XP_029086928.1   | 604               | Y371                 | H193 + H374  |
| Long-finned pilot whale     | XP_030728883.1   | 604               | Y371                 | H193 + H374  |
| Minke whale                 | XP_007167039.1   | 604               | Y371                 | H193 + H374  |
| Killer whale                | XP_004275286.1   | 604               | Y371                 | H193 + H374  |
| Beluga whale                | XP_022449092.1   | 604               | Y371                 | H193 + H374  |
| Finless porpoise            | XP_024606955.1   | 604               | Y371                 | H193 + H374  |
| Baiji                       | XP_007451212.1   | 604               | Y371                 | H193 + H374  |
| Pacific white-sided dolphin | XP_026938795.1   | 604               | Y371                 | H193 + H374  |
| Weddell seal                | XP_006730988.2   | 604*              | Y371                 | H193 + H374  |
| Northern fur seal           | XP_025733679.1   | 604               | Y371                 | H193 + H374  |
| Walrus                      | XP_004405789.1   | 604               | Y371                 | H193 + H374  |
| Sea otter                   | XP_022364100.1   | 604               | Y371                 | H193 + H374  |
| Polar bear                  | XP_008695171.1   | 604               | Y371                 | H193 + H374  |

<sup>a</sup>Number of amino acids.

maturation [24–27] but also in the pathogenesis of inflammatory, hyperproliferative, and neurological disorders [16,28,29]. Its crystal structure is known [30,31], the enzyme has well been characterized, and catalytically important amino acids have been identified [32,33]. Primates, which are ranked in evolution above gibbons (humans, chimpanzees, orangutans, gorilla), express 15-lipoxygenating ALOX15 orthologs. In contrast, mammals ranked lower than gibbons in evolution express 12-lipoxygenating enzymes and gibbons represent the evolutionary turning point [34,35]. When we searched the sequence databases, we detected ALOX15 orthologs in all marine mammals tested. The

degree of amino acid identity with human ALOX15 varied between 75% and 86 % (Table 3), and the triad determinants involved the Val(Ala)418 + Val(Ala)419 motif (Fig. S3a-n). These amino acid motifs are characteristic for arachidonic acid 12-lipoxygenating ALOX15 orthologs [35]. The Coffa determinant [33,36], which controls the stereochemistry of oxygen insertion, was an Ala in all cases (Fig. S3a-n), and thus, all enzymes were predicted to function as arachidonic acid 12S-lipoxygenating enzymes.

Human ALOX15B is an arachidonic acid 15-lipoxygenating enzyme [37] but its murine ortholog forms 8S-HETE as major arachidonic acid oxygenation product. As molecular reason for the altered reaction specificity of the two enzyme orthologs, a minor difference in the amino acid sequence has been identified [38]. Mutagenesis of the two amino acids located at

positions 603 and 604 of mouse Alox15b (Jisaka determinants) to the corresponding amino acids present in human ALOX15B (His603Asp + His604Val) resulted in a 15S-lipoxygenating mutant, and the inverse mutagenesis strategy on human ALOX15B did also alter the reaction specificity [38]. The Triad concept is not applicable for mammalian ALOX15B orthologs [39]. Searching the sequence databases (protein and genomic sequences), we identified ALOX15B orthologs in all tested marine mammals (Table S1). Except for the polar bear, the iron ligands in ALOX15B are strongly conserved. Moreover, the Jisaka determinants were occupied by either the Asp + Val or the Asn + Ile motifs and the Coffa determinant was an Ala in all cases (Fig. S4a-n). This sequence information suggested that the ALOX15B orthologs of marine mammals might function as

**Table 3.** Presence of ALOX15 orthologs in different marine mammals. The amino acid sequences of ALOX15 orthologs of different marine mammals were extracted from the protein databases of the different mammals. These sequences were crosschecked by the corresponding genomic sequences, and if required, minor corrections were introduced into the amino acid sequences. In order to quantify the degree of amino acid conservation and to identify functionally relevant residues (iron ligands, triad determinants, stereo determinants), dual amino acid sequence alignments were carried out with human ALOX15 (Fig. S3a-n).

| Species                     | Accession number | Size <sup>a</sup> | Iron ligands                    | Triad determinants          | Coffa determinant |
|-----------------------------|------------------|-------------------|---------------------------------|-----------------------------|-------------------|
| Human                       | NP_001131.3      | 662               | H360 + H365<br>H540 + H544+I662 | F353 + I418+<br>M419 + I593 | A403              |
| Sperm whale                 | XP_007109263.2   | 649               | H379 + H384<br>H550 + 554+I672  | F372 + A437+<br>A438 + I603 | A423              |
| Narwhale                    | XP_029066989.1   | 663               | H362 + H367<br>Y541 + H545+I663 | F353 + V418+<br>V419 + I593 | A404              |
| Long-finned pilot whale     | XP_030718215.1   | 686               | H362 + H367<br>H541 + H545+I663 | F353 + V418+<br>V419 + I593 | A404              |
| Mink whale                  | XP_007166551.1   | 663               | H362 + H367<br>H541 + H545+I663 | F353 + V418+<br>V419 + I593 | A404              |
| Killer whale                | XP_012387396.1   | 694               | H394 + H399<br>H563 + H567+I685 | F386 + V451+<br>V452 + I615 | A437              |
| Beluga whale                | XP_022451845.1   | 663               | H362 + H367<br>Y541 + H545+I663 | F353 + V418+<br>V419 + I593 | A404              |
| Finless porpoise            | XP_024592292.1   | 663               | H362 + H367<br>Y541 + H545+I663 | F353 + V418+<br>V419 + I593 | A404              |
| Baiji                       | XP_007457788.1   | 663               | 362 + H367<br>H541 + H545+I663  | F353 + V418+<br>V419 + I593 | A404              |
| Pacific white-sided dolphin | XP_026986059.1   | 745               | H362 + H367<br>H541 + H545+I663 | F353 + V418+<br>V419 + I593 | A404              |
| Weddell seal                | XP_030894829.1   | 663               | H362 + H367<br>H541 + H545+I663 | F353 + V418+<br>V419 + I593 | A404              |
| Northern fur seal           | XP_025720066.1   | 663               | H362 + H367<br>H541 + H545+I663 | F353 + V418+<br>V419 + I593 | A404              |
| Walrus                      | XP_004398616.1   | 663               | H362 + H367<br>H541 + H545+I663 | F353 + V418+<br>V419 + I593 | A404              |
| Sea otter                   | XP_022380480.1   | 663               | H362 + H367<br>H541 + H545+I663 | F353 + V418+<br>V419 + I593 | A404              |
| Polar bear                  | XP_008686293.1   | 696               | H394 + H399<br>H574 + H578+I696 | F386 + V451+<br>V452 + I626 | A437              |

<sup>a</sup>Number of amino acids.

arachidonic acid 15S-lipoxygenating enzymes. It should be stressed at this point that we did not express and functionally characterize any ALOX15B ortholog of marine mammals, and thus, this conclusion remains to be confirmed experimentally in subsequent expression studies.

Mammalian ALOX12 orthologs oxygenate arachidonic acid to 12S-HETE [40], and this reaction specificity is consistent with the predictions made on the basis of the Triad concept [Phe + Val(Ala)+Val(Ala)+Ile(Val)] (Table S2). Except for the polar bear, the iron ligands are well conserved but this might be related to the observation that the polar bear ALOX12 is apparently 150 amino acids bigger than that of other marine mammals. In mice, knockout studies have implicated this enzyme in platelet function [41] and in epidermal differentiation [42], but recent studies also suggested a role in hemostasis [43]. When we searched the sequence databases (protein and genomic sequences), we found ALOX12 orthologs in all marine mammals tested (Table S2). The degree of amino acid identity with human ALOX12 varied between 53% and 83%. The triad determinants involve the Val(Ala)+Val(Ala) motif, which is characteristic for arachidonic acid 12-lipoxygenating enzymes, and an Ala occupies the Coffa position (Fig. S5a-n). These data predict an arachidonic acid 12S-lipoxygenating enzyme for all tested marine mammals but experimental confirmation of this prediction is still pending.

ALOX12B and ALOXE3 are two ALOX isoforms, which are high level expressed in the skin, and thus, they are frequently referred to as epidermal ALOX isoforms. Human and murine ALOX12B orthologs are arachidonic acid 12R-lipoxygenating enzymes [44,45], which have been implicated in epidermal differentiation. Systemic knockout of the *Alox12b* gene induced malfunction of the epidermal water barrier, and newborns die within hours after birth because of dehydration [46]. Mutations in the human ALOX12B gene have been related to the pathogenesis of congenital ichthyosis [47], a hereditary skin disease characterized by excessive scaling. The Triad concept is not applicable to ALOX12B orthologs [39], but the enantioselectivity of these enzymes (12R-lipoxygenating) is consistent with the observation that a Gly occupies the Coffa position [48]. When we screened the protein databases of marine mammals for ALOX12B orthologs, we could not find such sequences in any of the tested *Cetaceaneae* (whales and dolphins). In a second step, we searched the genomic sequences of these animals for ALOX12B genes using the human ALOX12B gene as probe. Here again, we did not find ALOX12B genes (Table S3), and taken together, these data

indicate that the genomes of whales and dolphins do not involve functional ALOX12B genes. *Cetaceans* do not bear furs, and the structure of their skin is different when compared to that of land-living mammals, such as mice and humans. On the other hand (Table S3), we did detect functional ALOX12B orthologs in fur-bearing marine mammals (Weddell seal, northern fur seal, walrus, sea otter, polar bear) and these enzymes exhibit a high (70–80%) degree of amino acid identity with human ALOX12B. All iron ligands are conserved, and a Gly occupies the Coffa position (Fig. S6a-e). These data suggest that these enzymes are catalytically active and that they might function as 12R-lipoxygenases. The lack of functional ALOX12B orthologs in *Cetaceans* might lead to the prediction that epidermal differentiation in these animals does not follow the mechanisms suggested for mice and humans [49,50].

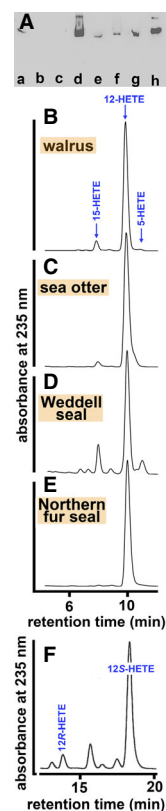
ALOXE3 constitutes an epidermal ALOX isoform [51–53], which has been suggested to work in concert with ALOX12B during epidermal differentiation [49,50]. Systemic ALOXE3 deficiency also induces an ichthyosis-like phenotype in mice but the symptoms are less severe when compared to those observed for *Alox12b* knockouts [54]. Although recombinant ALOXE3 exhibits an arachidonic acid oxygenase activity (formation of racemic 5-HpETE, 7-HpETE, and 9-HpETE) in the presence of exogenous hydroperoxides and under hyperoxic conditions, it has been suggested to function *in vivo* as hydroperoxide isomerase [55–57]. When we explored the distribution of ALOXE3 orthologs in marine mammals (Table S4), we detected ALOXE3 genes in all tested species regardless of whether they are fur-bearing or not. After extraction of the cDNA sequences from the genomic data, we found that the degree of amino acid identity of these enzymes with human ALOXE3 varied between 70% and 75% and the iron ligands are conserved (Fig. S7a-n). As in human ALOXE3, an Ala occupies the Coffa position (Table S4), and taken together, these data suggest the functionality of these enzymes. However, our dual amino acid sequence alignments also indicated the presence of premature stop codons and/or frameshifting point mutations in the coding region of the ALOXE3 genes of whales and dolphins, which interrupt their open reading frames. Based on these sequence data, one can conclude that although *ALOXE3* genes are present in the genome of marine mammals, they do not encode for functional ALOXE3 orthologs in *Cetaceaneae*.

ALOX5 is the key enzyme in the biosynthesis of leukotrienes [58,59] and plays an important role in inflammatory diseases. The crystal structure of a

stabilized version of human ALOX5 has been solved [60], and knockout mice show a selective opposition to certain inflammatory insults [61]. When fed a lipid-rich diet, these animals develop aortic aneurisms [62] suggesting a role of this enzyme in vascular remodeling [63]. Searching the protein databases, we detected ALOX5 sequences in all marine mammals (Table S5). The degree of amino acid identity with human ALOX5 varied between 88% and 95%, and the iron ligands are well conserved (Fig. S8a-n). Moreover, the triad determinants were identical with those amino acids identified at these positions in human ALOX5 and these data suggest the functionality of the corresponding enzymes. However, for the sperm whale we identified a truncated version of ALOX5 (412 amino acids instead of 674 amino acids), which lacks internal parts of the enzyme. Since the lacking sequences involve functionally relevant amino acids, it is most probable that this truncated ALOX5 version is catalytically silent. However, it might well be that the apparent truncation is a result of a sequencing artifact.

### Expression of selected ALOX15 orthologs of marine mammals

To test the functionality of ALOX15 orthologs of different marine mammals and to compare the corresponding enzymes with those of land-living mammals, we selected different species representing distinct evolutionary subclasses (Fig. 1). Unfortunately, no sequence information is currently available for sea cows and other afrotherian marine mammals. In contrast, for laurasiatherian marine mammals a number of complete ALOX15 sequences are available and we selected the following species for expression and functional characterization (Fig. 1): (i) baiji, beluga whale, and mink whale representing *Cetacea*; (ii) Weddell seal, walrus, and northern fur seal representing *Pinnipedia*; and (iii) sea otter representing *Musteloidea*. Unfortunately, no complete ALOX15 sequence data are currently available for the polar bear, and thus, no ALOX15 ortholog could be expressed. For expression, the coding regions of the cDNAs were cloned in the pET bacterial expression vector and recombinant ALOX15 orthologs were expressed as N-terminal hexa-his-tag fusion proteins. First, we tested by western blotting the presence of recombinant enzymes in the bacterial lysate supernatants using an antibody directed against the hexa-his-tag as probe. From Fig. 2A, it can be seen that the ALOX15 orthologs of baiji, (lane 1), northern fur seal (lane 4), walrus (lane 5), sea otter, and Weddell seal are present in variable amounts in the bacterial lysis supernatant. In contrast,



**Fig. 2.** Expression of ALOX15 orthologs of marine mammals in *E. coli*. The ALOX15 orthologs of selected marine mammals are expressed as recombinant his-tag fusion proteins in *E. coli* as described in Materials and Methods. A) Immunoblot analysis: 5  $\mu$ L of the bacterial lysis supernatant was applied to SDS/PAGE; the separated proteins were blotted to a nitrocellulose membrane; and the blot was probed with an anti-his-tag antibody. To estimate the expression levels of the recombinant proteins, 250 ng of pure recombinant *M. fulvus* LOX [88] was applied for calibration purposes. Lane (a) baiji, lane (b) mink whale, lane (c) beluga whale, lane (d) northern fur seal, lane (e) walrus, lane (f) sea otter, lane (g) Weddell seal, lane (h) 250 ng of pure recombinant *M. fulvus* LOX. B-E) ALOX15 activity assays of different ALOX15 orthologs analyzed by RP-HPLC: Different volumes of the bacterial lysis supernatants were employed for the activity assays (see Materials and Methods) using arachidonic acid as substrate, and RP-HPLC analysis indicated the formation of specific ALOX15 products (12- and 15-HETE). The chromatograms were scaled for the highest product peak (12-HETE). F) Activity assay of baiji ALOX15 analyzed by NP-HPLC: Arachidonic acid oxygenation products formed by recombinant baiji ALOX15 were prepared by RP-HPLC and further analyzed by NP-HPLC (see Materials and Methods). In this experiment, a modified cell lysis protocol was employed (see Materials and Methods).

no immunoreactive material was detected in the lysis supernatants of beluga whale and mink whale.

Next, we performed activity assays using the bacterial lysate supernatants as enzyme source. For this purpose, aliquots of the lysate supernatant were

incubated with arachidonic acid for 8 min and the oxygenation products were analyzed by RP-HPLC. Here, we found the formation of specific lipoxygenase products by the ALOX15 orthologs of walrus (Fig. 2B), sea otter (Fig. 2C), Weddell seal (Fig. 2D), and the northern fur seal (Fig. 2E).

In these cases, the major oxygenation products comigrated in RP-HPLC with an authentic standard of 12-HETE. In addition, variable amounts of 15-HETE were also detected. No ALOX15 activity could be observed when the bacterial lysate supernatants of the beluga whale, the mink whale, and baiji were used as enzyme source. Together with the lacking western blot signals, these data suggest that the corresponding enzymes are either not well expressed in *E. coli* or that they have been deposited as denatured proteins in inclusion bodies. In fact, we observed large amounts of immunoreactive protein in the bacterial lysis pellets of mink whale and baiji. Although we performed a number of renaturation experiments, we could not restore the catalytic activity of these enzymes. No ALOX15 expression was observed for the ALOX15 ortholog of the beluga whale. To obtain functional data for baiji ALOX15, we employed a modified cell lysis protocol (see Materials and Methods). With this method, we obtained a catalytically active enzyme preparation and NP/CP-HPLC analysis of the oxygenation products revealed the formation of 12S-HETE as major oxygenation product (Fig. 2F). When we attempted to express the ALOX15 orthologs of the beluga whale and the mink whale in different eukaryotic overexpression systems (HEK293 cells, Sf9 insect cells), we never obtained sufficient amounts of catalytically active protein.

Finally, we tried to purify the recombinant enzymes by affinity chromatography on Ni-agarose. For some ALOX15 orthologs, this method worked very well and we obtained strongly enriched enzyme preparations. However, other ALOX15 orthologs could not be purified and we experienced a strong reduction of the catalytic activity. Thus, we decided not to purify the enzymes for more detailed catalytic characterization but use the lysate supernatants as enzyme source.

### Functional characterization of recombinant ALOX15 orthologs

To compare the ALOX15 orthologs of marine mammals with human ALOX15, we quantified a number of enzyme characteristics, which have previously been determined for human ALOX15 [64]. Human ALOX15 is an arachidonic acid 15-lipoxygenating enzyme [65]. In contrast, the ALOX15 ortholog of the

sea otter, which represents *Mustelidae* (Fig. 1), converts the same substrate mainly to 12-HETE (Fig. 2C). Small amounts of 15-HETE were also formed (Fig. 3A, right trace), and this dual reaction specificity is characteristic for mammalian ALOX15 orthologs [39,64,66,67]. NP-HPLC analysis (Fig. 3A, left trace) confirmed this finding, and chiral-phase HPLC indicated a strong preponderance of 12S-HETE over the corresponding R-enantiomer (Fig. 3A, middle trace).

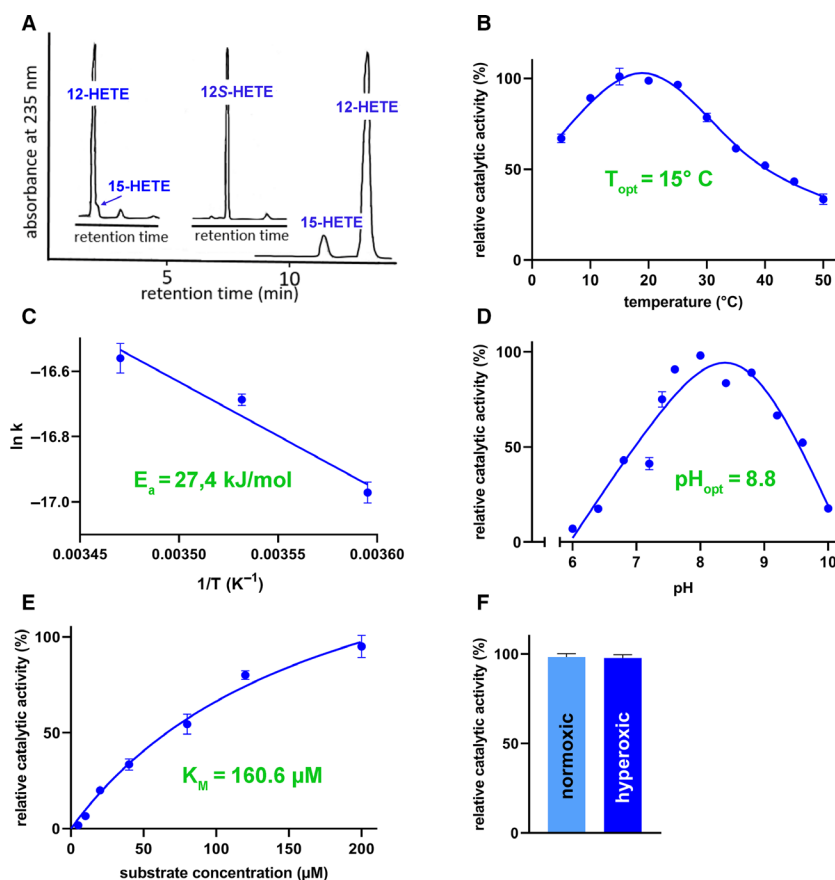
Next, we determined the temperature dependence of arachidonic acid oxygenation by this enzyme and found a  $T_{\text{opt}}$  of 15 °C (Fig. 3B). At higher temperatures, the reaction rate declines suggesting a high degree of thermolability of the enzyme. From the data determined in the temperature range between 5 °C and 15 °C, we constructed the Arrhenius plot and calculated an activation energy of 32.3 kJ·mol<sup>-1</sup> (Fig. 3C). The  $\text{pH}_{\text{opt}}$  of arachidonic acid oxygenation was 8.0 (Fig. 3D), and a  $K_{\text{M}}$  value of 26.9  $\mu\text{M}$  was determined (Fig. 3E). Thus, the substrate affinity of the sea otter ALOX15 is comparable with that of the rabbit enzyme [68]. There was no significant increase in the reaction rate of arachidonic acid oxygenation (Fig. 3F) when the reaction was carried out under hyperoxic conditions, and these data suggest a high oxygen affinity of the enzyme.

Similar characterization studies were carried out for the ALOX15 orthologs of the northern fur seal (Fig. S9A–F) representing *Otariidae* (Fig. 1), Weddell seal (Fig. S10A–F) representing *Phocidae* (Fig. 1), and walrus (Fig. S11A–F) representing *Odobenidae* (Fig. 1). The kinetic parameters are summarized in Table 4. Unfortunately, there is no sufficient sequence information currently available in the databases to express and characterize the ALOX15 ortholog of the polar bear representing *Ursinae* (Fig. 1).

### Membrane oxygenase activity of the ALOX15 orthologs of marine mammals

ALOX15 orthologs of different mammals exhibit biomembrane oxygenase activity [69–71]. To explore whether the ALOX15 orthologs of marine mammals are also capable of oxygenating membrane-bound polyenoic fatty acids, we incubated the recombinant enzyme preparations with mitochondrial membranes (submitochondrial particles, SMP) and analyzed by HPLC the oxygenation products in the hydrolyzed lipid extracts. From Fig. 4C, it can be seen that conjugated dienes are present in the hydrolyzed lipid extracts of SMPs treated with the ALOX15 ortholog of the northern fur seal. In no-enzyme (membranes only) controls, the conjugated diene peak was much





**Fig. 3.** Characterization of the catalytic properties of the ALOX15 ortholog of sea otter. The ALOX15 ortholog of sea otter was expressed as recombinant N-terminal hexa-his-tag fusion protein in *E. coli*, and aliquots of the bacterial lysis supernatant were used as enzyme source. All measurements were carried out at room temperature. (A) Reaction specificity: Activity assays were performed as described in Materials and Methods (pH 7.4, 100  $\mu\text{M}$  arachidonic acid as substrate), and the reaction products were analyzed by RP-HPLC (right trace). The major conjugated dienes were fractionated and further analyzed by NP- (left trace) and CP-HPLC (middle trace). Taken together, these data indicate that 12S-HETE is the major oxygenation product of the ALOX15 ortholog of sea otter. (B) Temperature dependence: Arachidonic acid oxygenase activity assays were carried out at different temperatures and the formation of conjugated dienes during the incubation period was quantified as measure of the catalytic activity of the recombinant enzyme. The mean of the catalytic activities at 15°C was set 100%, and the relative activities measured at the other temperatures were quantified. At each temperature, 4 measurements were carried out and means were calculated. The standard deviations (SD) are represented by the error bars. (C) Arrhenius plots: The means of relative catalytic activities determined in the temperature ranging between 5° and 15°C (see panel B) were used to construct the Arrhenius plot and to determine the activation energy. (D) pH optimum: Activity assays were carried out at different pH and the mean of the catalytic activities measured at pH 8 was set 100%. To ensure homogeneity of the buffer mixtures at all pH, we mixed equal volumes of 10 mM phosphate buffer with 10 borate buffer and adjusted the corresponding pH at room temperature by the addition of 5 M HCl or 5 M KOH. At each pH value, 4 measurements were carried out and means were calculated. The standard deviations (SD) are represented by the error bars. (E) Substrate affinity studies: The arachidonic acid oxygenase activity was assayed at different substrate concentrations (room temperature, pH 7.4) and the  $K_m$  value was determined (SigmaPlot, Systat Software GmbH, Erkrath, Germany). At each substrate concentration, 4 measurements were carried out and means were calculated. The standard deviations (SD) are represented by the error bars. (F) Oxygen dependence of catalytic activity: Comparative oxygenase activity studies at two different oxygen concentrations were carried out. For normoxic measurements, the reaction buffer of the activity assays (room temperature, pH 7.4, 100  $\mu\text{M}$  arachidonic acid) was saturated with air, which gives an approximate oxygen concentration of about 170  $\mu\text{M}$ . For hyperoxic measurements, the reaction buffer was bubbled with pure oxygen gas for about 30 min, and then, the reaction was started by the addition of the enzyme preparation. At each condition, 4 measurements were carried out and means were calculated. The standard deviations (SD) are represented by the error bars.

lower (Fig. 4A) indicating the ALOX15 origin of the conjugated dienes. Following the chromatogram at 210 nm (Fig. 4B + D), we analyzed the polyenoic fatty

acid content of the membranes and the chromatograms show that linoleic acid and arachidonic acid are the two major ALOX15 substrates present in

**Table 4.** Catalytic parameters of ALOX15 orthologs of different marine mammals using arachidonic acid as substrate. Kinetic studies were carried out as described in Materials and Methods, and the bacterial lysis supernatants were used as enzyme source

| Species           | Temperature optimum [°C] | activation energy [kJ·mol <sup>-1</sup> ] | pH optimum | K <sub>M</sub> value [μM] |
|-------------------|--------------------------|---|------------|---------------------------|
| Sea otter         | 15                       | 27.44                                     | 8          | 160.6                     |
| Weddell seal      | 15                       | 32.33                                     | 7.6        | 62.9                      |
| Walrus            | 20                       | 158.6                                     | 7.4        | 43.9                      |
| Northern fur seal | 15                       | 16.04                                     | 7.6        | 156.4                     |

mitochondrial membranes. The chromatograms of the enzyme incubation (Fig. 4D) and the no-enzyme control (Fig. 4B) look very similar, and these data suggest that ALOX15 incubation does not oxygenate a large share of the polyenoic fatty acids. To quantify the degree of oxidation of the membrane lipids, we next determined the amounts of conjugated dienes (OH-PUFAs) and the amounts of polyenoic fatty acids (PUFAs) present in the hydrolyzed lipid extracts prepared from the incubations with (Fig. 4C + D) and without (Fig. 4A + B) ALOX15 treatment and calculated the OH-PUFA/PUFA ratios. Here, we found that 1.72% of the two major PUFAs were present as oxygenated derivatives after ALOX15 treatment. Similar values were obtained when these membranes were treated with native rabbit ALOX15 [69], recombinant human ALOX15 [64], or recombinant rat ALOX15 [67].

Identical experiments were carried out for the ALOX15 orthologs of Weddell seal, sea otter, and walrus, and the analytical data are summarized in Table 5. To further characterize the major oxygenation products, we pooled the products eluted in the HODE/HETE region of the four different ALOX15 orthologs, prepared the conjugated dienes formed, and analyzed them by combined normal-phase/chiral-phase (NP/CP-) HPLC. Here, we confirmed (Fig. 4E) that esterified 13-HODE and 12-HETE were the major conjugated dienes. Similar product patterns were identified when ALOX15 orthologs of other marine mammals were used as catalysts (Table 6).

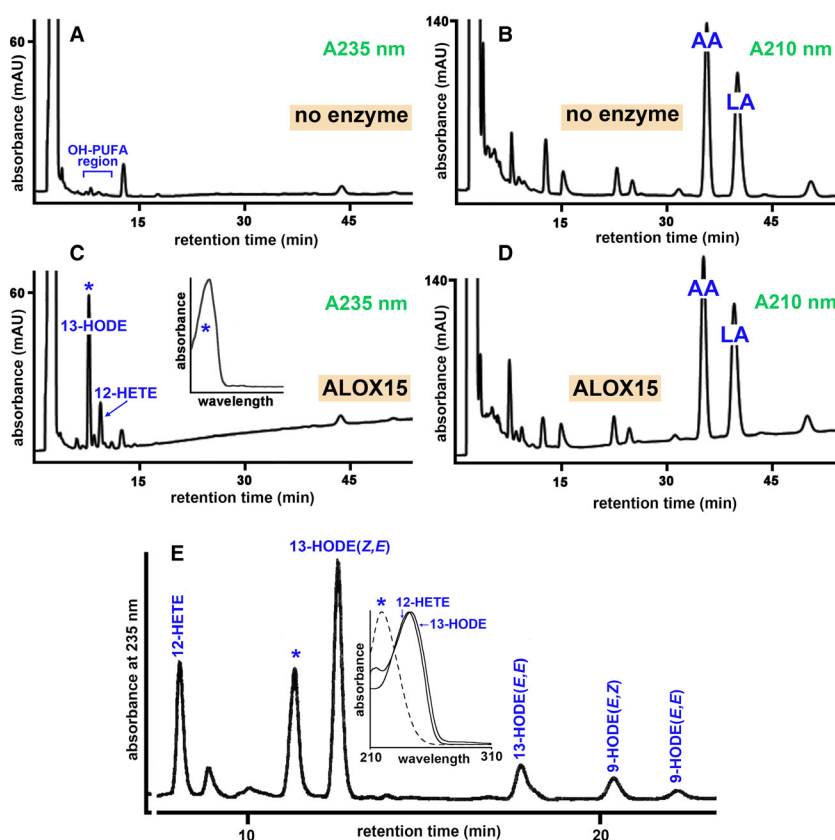
Taken together, these data indicate that the ALOX15 orthologs of marine mammals exhibit membrane oxygenase activity and that esterified 13-HODE and 12-HETE are the major oxygenation products, when these enzymes oxygenate mitochondrial membrane lipids.

## Mutagenesis studies on the triad determinants

Human ALOX15 is an arachidonic acid 15-lipoxygenating enzyme [72], whereas the mouse [73] and rat orthologs [67,74] are 12-lipoxygenating. The Triad concept explaining the variable reaction specificity of mammalian ALOX15 orthologs suggests that the side chain geometry of the triad determinants (Phe353, Ile418 + Met419, Ile593 of human ALOX15) is important for the reaction specificity. When small amino acids are located at the positions, which align with these amino acids of human ALOX15, the corresponding enzyme exhibits an arachidonic acid 12-lipoxygenating activity. In contrast, when more space-filling side chains are localized at these positions, the formation of 15-HETE is dominant [29]. To explore whether the ALOX15 orthologs of marine mammals follow the Triad concept, we first carried out an amino acid sequence alignments with human ALOX15 and identified the triad determinants (Fig. S3a-n). Here, we found that Phe353 (Borngraber determinant I) of human ALOX15 is strongly conserved in marine mammals. In contrast, at the Sloane positions (Ile418 + Met419 of human ALOX15) two small amino acids (Val or Ala) are located in marine mammals (Fig. S3a-n). These data suggest that the ALOX15 orthologs of marine mammals function as arachidonic acid 12-lipoxygenating enzymes and this conclusion is consistent with the results of our activity assays (Fig. 2). To test whether introduction of more space-filling residues at the triad determinants alters the reaction specificity of these enzymes in favor of arachidonic acid 15-lipoxygenation, we first expressed the following mutants of the northern fur seal ALOX15: Val418Ile, Val419Met, and Val418Ile + Val419Met. The analysis of the arachidonic acid oxygenation products is shown in Fig. 5.

The wild-type enzyme is a major 12-lipoxygenating enzyme (Fig. 2), and we confirmed this finding in our mutagenesis studies (Fig. 5). The Val418Ile mutant exhibits pronounced dual reaction specificity since similar amounts of 12- and 15-H(p)ETE are formed (Fig. 5). The Val419Met mutant prefers the formation of 12-H(p)ETE but compared with the wild-type enzyme, the share of 15-H(p)ETE formation was clearly augmented (Fig. 5). The Val418Ile + Val419Met double mutant functions as dominant 15-lipoxygenating enzyme, and the share of 12-H(p)ETE formation dropped down to about 10%.

The Triad concept also predicts that alterations in the reaction specificity induced by mutations of the Sloane determinants (Val418 + Val419) can be reversed, when the Borngraber I determinant (Phe353) is mutated [32]. To find out whether this is also the case for the ALOX15



**Fig. 4.** Membrane oxygenase activity of the ALOX15 orthologs of marine mammals. Membrane oxygenase activity assays were carried out as described in Materials and Methods. The hydrolyzed lipid extracts were analyzed by RP-HPLC, and the absorbances at 235 nm (elution of conjugated dienes) and 210 nm (elution of PUFAs) were monitored. (A) No-enzyme control (membranes only), detection of conjugated dienes, (B) No-enzyme control (membranes only), detection of PUFAs. (C) ALOX15 of northern fur seal incubation, (D) ALOX15 of northern fur seal incubation, detection of PUFAs. (E) Normal-phase (NP-) HPLC analysis of the conjugated dienes formed during the membrane oxygenase activity assays carried out with the ALOX15 orthologs of Weddell seal, northern fur seal, sea otter, and walrus: Membrane oxygenase activity assays were performed with the ALOX15 orthologs of these marine mammals (see Materials and Methods). The conjugated dienes were prepared by RP-HPLC and pooled together. Solvent was evaporated; lipids were reconstituted in normal-phase HPLC solvent and analyzed by NP-HPLC (see Materials and Methods). Inset: The UV spectra of the products co-eluting with authentic standards of 12-HETE and 13-HODE. The peak marked with an asterisk (\*) did not exhibit a typical diene chromophore, and control preparations indicated that it originated from the RP-HPLC solvent.

ortholog of the northern fur seal, we mutated in the Val418Ile + Val419Met double-mutant Phe353 to smaller amino acids (Leu, Ala). We found that the Phe353Leu + Val418Ile+Val419Met and the Phe353Ala + Val418Ile+Val419Met triple mutants catalyzed almost exclusive arachidonic acid 12-lipoxygenation (Fig. 5). Thus, introduction of less space-filling residues at Phe353 completely inverted the alterations in reaction specificity induced by Val418Ile + Val419Met exchange. Similar results were obtained when the ALOX15 orthologs of sea otter, walrus, and Weddell seal were taken through this experimental protocol (Table 7). Taken together, these data indicate that the Borngraber-1 (Phe353) determinant and the Sloane determinants (Val/Ala418 + Val/Ala419) functionally

interact with each other and impact the reaction specificity of these enzymes in a concerted way. From these data, one can conclude that the Triad concept is applicable to ALOX15 orthologs of all marine mammals included in this study.

## Discussion

### Eicosanoid-synthesizing enzymes in marine mammals

Eicosanoids are lipid mediators that have been implicated in homeostasis but also in the pathogenesis of important diseases. COX-inhibitors are potent anti-inflammatory drugs [22], and leukotriene receptor

**Table 5.** Membrane oxygenase activity of ALOX15 orthologs of marine mammals. The membrane oxygenase activity assays were carried out as described in Materials and Methods, and the hydroxy PUFA/PUFA ratio in the hydrolyzed lipid extracts was quantified to judge the degree of oxygenation of the membrane ester lipids after ALOX15 treatment

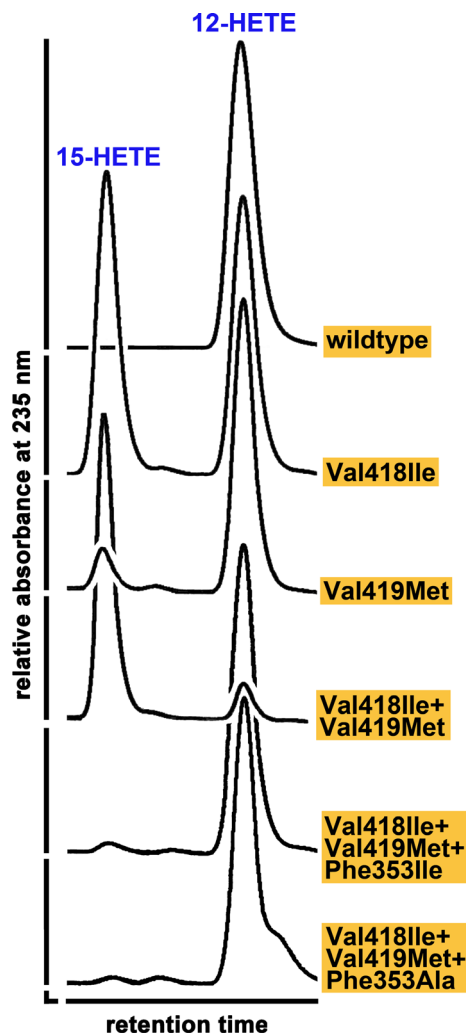
| Species           | PUFA content (nmoles/sample) | OH-PUFA content (nmoles/sample) | OH-PUFA/PUFA ratio (%) |
|-------------------|------------------------------|---------------------------------|------------------------|
| Sea otter         | 193                          | 1.2                             | 0.6                    |
| Weddell seal      | 206                          | 0.9                             | 0.5                    |
| Walrus            | 208                          | 1.4                             | 0.7                    |
| Northern fur seal | 261                          | 4.5                             | 1.7                    |
| No-enzyme control | 209                          | 0.2                             | 0.1                    |

**Table 6.** Product patterns formed when different marine mammal ALOX15 orthologs oxygenate the membrane lipids of mitochondrial membranes. The membrane oxygenase activity assays were carried out as described in Materials and Methods. The conjugated dienes formed (12-HETE, 13-HODE) were quantified by RP-HPLC as indicated in Fig. 4

| Species           | 12-HETE (%) | 13-HODE (%) |
|-------------------|-------------|-------------|
| Sea otter         | 34.1        | 65.9        |
| Weddell seal      | 28.5        | 71.5        |
| Walrus            | 38.7        | 61.3        |
| Northern fur seal | 33.3        | 66.7        |

antagonists [75] are available for prescription as anti-asthmatics. Despite our comprehensive knowledge on eicosanoid biology in mice and humans, little is known on the role of these mediators in marine mammals. In this study, we systematically searched the publicly available protein databases for eicosanoid-synthesizing enzymes in marine mammals and found that COX1, which is responsible for the biosynthesis of physiological prostaglandins, is present in all tested marine mammals (Table 1). According to the results of our sequence alignments, the enzymes detected should be functional since the functionally important amino acids are well conserved. COX2 orthologs have also been detected in all marine mammals tested (Table 2). Here again, the functional amino acids are strongly conserved suggesting catalytic activity of the corresponding enzymes.

ALOX15 orthologs have been detected in all marine mammals tested (Table 3), and these data indicate a



**Fig. 5.** Mutagenesis of the triad determinants of the ALOX15 ortholog of northern fur seal. Enzyme variants were prepared as described in Materials and Methods, and activity assays were carried out. Aliquots of the activity assays were analyzed by RP-HPLC, and the chromatograms were scaled to the height of the dominant conjugated dienes (12- or 15-HETE). Partial chromatograms of the OH-PUFA region are shown.

high degree of distribution of this enzyme in these animals. As for COX2, catalytically important amino acids (iron ligands, triad determinants, stereo determinants) are well conserved, and thus, the enzymes should be catalytically active. This conclusion is supported by the catalytic activity of the recombinant ALOX15 enzymes expressed in our study. Other ALOX isoforms (ALOX15B, ALOX12, ALOX12b, ALOXE3, ALOX5) were also detected in most marine mammals (Table S1–S5), and here again, the catalytically important amino acids are conserved. Interestingly (Table S3), we did not find *ALOX12B* genes in any of the nine *Cetacean* species

**Table 7.** Applicability of the Triad concept for ALOX15 orthologs of marine mammals. ALOX15 orthologs of marine mammals were mutated, and the single, double, and triple mutants were employed for activity assays (see Materials and Methods). The major oxygenation products were identified by RP-HPLC strategy. The 12S-HETE/15S-HETE ratios are given in the table. Values < 1 indicate 12-HETE as major oxygenation product; values > 1 indicate 15-HETE as major oxygenation product. n.d., not determined; these mutants could not be expressed as catalytically active proteins

| Species           | Wild-type | Val418Ile | Val419Met | Val418Ile+<br>Val419Met | Val418Ile+<br>Val419Met+<br>Phe353Leu | Val418Ile+<br>Val419Met+<br>Phe353Ala |
|-------------------|-----------|-----------|-----------|-------------------------|---------------------------------------|---------------------------------------|
| Sea otter         | 7.60      | 0.66      | 1.50      | 0.04                    | 0.78                                  | 3.10                                  |
| Weddell seal      | 78.60     | 1.00      | 2.80      | 0.11                    | 99.0                                  | 10.6                                  |
| Walrus            | 54.30     | 2.31      | 3.29      | 0.13                    | n.d.                                  | n.d.                                  |
| Northern fur seal | 99        | 1.06      | 8.53      | 0.15                    | 99                                    | 99                                    |

(whales and dolphins) tested and this conclusion was based on the data obtained screening the protein databases and genomic sequences of these animals. *Cetaceae* do not carry a fur, and the skin of these animals is differently structured when compared to fur-bearing mammals. Interestingly, ALOX12B orthologs were present in all tested fur-bearing marine mammals (Table S3) and these data suggest that this enzyme may be related to fur development. ALOX12B and ALOXE3 have previously been implicated in epidermal differentiation [47,49,50] in mice and humans. In fact, Alox12b knockout mice die from dehydration shortly after birth [76], and thus, the enzyme has been implicated in the formation of the epidermal barrier preventing water evaporation. Since *Cetaceaneae* are born in the water and spend their entire life in aqueous surroundings, they do not need an epidermal water evaporation barrier. Thus, there might be no evolutionary pressure on the ALOX12B genes in *Cetaceaneae*, and the lack of such pressure might have led to the disappearance of these genes. Interestingly, ALOXE3 genes are present in the genomes of the tested *Cetaceaneae* (Table S4). This finding was rather surprising, since ALOX12B and ALOXE3 orthologs have been implicated in the formation of the epidermal water barrier. However, when we explored the genomic ALOXE3 sequences of *Cetaceaneae* in more detail we detected premature stop codons and/or frameshifting point mutations in the coding regions of the corresponding genes (Fig. S7) and these data suggest that these genes do not encode for functional proteins. Thus, according to these sequence data *Cetaceaneae* may not express functional ALOXE3 orthologs.

### Comparison of ALOX15 orthologs of marine mammals with those of land-living mammals

In general, ALOX15 orthologs exhibit a broad substrate specificity accepting most naturally occurring

polyenoic fatty acids as substrate. The ALOX15 orthologs of marine mammals oxygenate arachidonic acid to 12S-HETE (Fig. 2), and 13S-HODE was the major product of linoleic acid oxygenation (data not shown). When the two fatty acids were simultaneously supplied as constituents of biomembranes, 13S-HODE formation was dominant (Fig. 4).

The  $K_M$  value for arachidonic acid oxygenation varied between 44 and 160  $\mu\text{M}$  for the different marine mammalian ALOX15 orthologs tested. These data values are higher than the  $K_M$  values determined for native rabbit and recombinant human ALOX15 for linoleic acid [64,68]. It should, however, be stressed that we assayed the fatty acid oxygenase activity in the absence of any detergent, which lowers the water solubility of the substrate fatty acids and, thus, its availability for the enzymes. In a similar experimental setup (no detergent), we determined similar  $K_M$  values for arachidonic acid for the ALOX15 orthologs of *P. aeruginosa* [71] and *T. belangeri* [77].

Compared with the ALOX15 orthologs of land-living mammals, the thermostability of the enzymes of marine mammals is rather low. At room temperature, the enzymes undergo rapid inactivation and even on ice the enzyme preparations lose catalytic activity. This catalytic instability might also be discussed as reason why the enzymes inactivate during affinity chromatography purification. The molecular basis for the catalytic instability has not been explored.

Mammalian ALOX and COX isoforms exhibit a high affinity for atmospheric oxygen, and the oxygen  $K_M$  varied between 10 and 26  $\mu\text{M}$  [78]. In contrast [79], oxygen affinity of the 15-lipoxygenating *P. aeruginosa* ALOX was much lower ( $K_M$  of 0.4 mM). When we studied the impact of higher oxygen concentrations on the rate of arachidonic acid oxygenation, we did not observe increased rates under hyperoxic conditions (Fig. 3, Fig. S9, S10, S11). Although we did not exactly quantify the oxygen  $K_M$ , the lacking increase

in catalytic activity under hyperoxia suggests that under normoxic conditions, the enzymes are oxygen saturated. Thus, these data suggest a high oxygen affinity of the ALOX15 orthologs of marine mammals.

All tested ALOX15 orthologs of marine mammals are capable of oxygenating membrane ester lipids (Fig. 4, Table 5). This catalytic activity was first described for rabbit ALOX15 [80] and has later been confirmed for the enzyme orthologs of other land-living mammals [64,67,70]. Unfortunately, for ALOX15 orthologs of marine mammals no information on this catalytic property has been available. Here, we showed that the tested ALOX15 orthologs of marine mammals exhibit a membrane oxygenase activity but compared with the fatty acid oxygenase activity this catalytic activity was 10-fold less efficient. This finding is consistent with the observations made for other mammalian ALOX15 orthologs [81]. Although the mechanistic basis for this phenomenon has not been explored, it may be possible that the membrane proteins protect the membrane lipids from the ALOX15 attack.

### The ALOX15 orthologs of marine mammals follow the Triad concept

The Triad concept of ALOX15 specificity suggests that three clusters of amino acids (triad determinants) are important for the reaction specificity [32]. In human and rabbit ALOX15, these determinants are Phe353 (Borngraber-1 determinant), Ile418 + Met419 (Sloane determinant), and Ile593 (Borngraber-2 determinant) [32,82,83]. In all marine mammalian ALOX15 orthologs, a Phe aligns with Phe353 of human ALOX15 (Fig. S3a-n). Ile418 + Met419 of human ALOX15 aligns with Val + Val, Val + Ala, or Ala + Val motifs in marine mammalian ALOX15 orthologs. Thus, small amino acids are present at the Sloane determinants. Ile593 of human ALOX15 is conserved in all marine mammalian ALOX15 orthologs. Taken together, these sequence data predict arachidonic acid 12-lipoxygenating ALOX15 orthologs for all marine mammals. To explore whether the triad determinants functionally interact with each other, we introduced the more bulky amino acids present in human ALOX15 at these positions into the marine enzyme orthologs and observed a gradual change in the reaction specificity favoring arachidonic acid 15-lipoxygenation (Table 7). In fact, the Val418Ile + Val419Met double mutants were dominantly 15-lipoxygenating. When we introduce smaller amino acids at the Borngraber-1 position (Val418Ile + Val419Met + Phe353Leu, Val418Ile + Val419Met + Phe353Ala), the changes induced by mutagenesis of the Sloane determinants (Val418Ile + Val419Met) were reversed and

dominantly 12-lipoxygenating triple mutants resulted (Fig. 5). Taken together, these data indicate that the Triad concept explains the reaction specificity of the ALOX15 orthologs of marine mammals and that the triad determinants functionally interact with each other.

### The reaction specificity of the ALOX15 orthologs of marine mammals supports the Evolutionary Hypothesis of ALOX15 specificity

The Evolutionary Hypothesis of ALOX15 specificity suggests that mammals ranked in evolution above gibbons (humans, chimpanzee, gorillas, orangutans) express an arachidonic acid 15-lipoxygenating ALOX15. In contrast, lower primates and other mammals express arachidonic acid 12-lipoxygenating enzymes [35,84]. There are rare exceptions, but more than 90 % of all functionally characterized mammalian ALOX15 orthologs follow this concept [35,84]. If this hypothesis is applicable for marine mammals, their ALOX15 orthologs should function as arachidonic acid 12-lipoxygenating enzymes. Analysis of the sequence data we extracted from the databases (Table 3) indicates that the Sloane determinants are occupied by small amino acids (Val/Ala418, Val/Ala419), and on the basis of the Triad concept [35], one can predict arachidonic acid 12-lipoxygenating activity for the 14 marine mammal ALOX15 orthologs we found in the database. Four of them have been expressed as recombinant enzyme and functional characterization confirmed this prediction (Fig. 3). Thus, the reaction specificities of the functionally tested ALOX15 orthologs of marine mammals support the Evolutionary Hypothesis.

## MATERIALS AND METHODS

### Chemicals

The chemicals were purchased from the following vendors: acetic acid from Carl Roth GmbH (Karlsruhe, Germany); sodium borohydride from Life Technologies, Inc. (Eggenstein, Germany); antibiotics and isopropyl- $\beta$ -thiogalactopyranoside (IPTG) from Carl Roth GmbH (Karlsruhe, Germany); restriction enzymes from Thermo Fisher Scientific-Fermentas (Schwerte, Germany); the *E. coli* strain Rosetta2 DE3 pLysS from Novagen (Merck-Millipore, Darmstadt, Germany); and *E. coli* strain XL-1 from Stratagene (La Jolla, CA, USA). Oligonucleotide synthesis was performed at BioTez Berlin Buch GmbH (Berlin, Germany). Nucleic acid sequencing was carried out at Eurofins Genomics Germany GmbH (Ebersberg, Germany). HPLC-grade methanol, acetonitrile, and water were purchased

from Fisher Scientific. Authentic HPLC standards of HETE isomers (15S/R)-HETE, 15S-HETE, 12(S/R)-HETE, 12S-HETE, 5S-HETE) and the polyenoic fatty acids used as ALOX substrates were purchased from Cayman Chem. [distributed by Biomol (Hamburg, Germany)].

### In silico database searches and sequence alignments

Initially, we extracted the amino acid sequences of ALOX and PGHS orthologs of marine mammals from the public protein database (<https://www.ncbi.nlm.nih.gov/protein>) using the key words 'lipoxygenase' and 'prostaglandin H synthase'. In a second step, we searched the genomic sequences deposited in the genome databases of the different marine mammals using the genomic sequence of human PGHS and ALOX genes. The genomes of all the marine mammals explored in this study have been sequenced completely by next-generation sequencing techniques, and the different sequence reads were properly assembled. The genome coverage of the assemblies ranges from 27-fold to 248-fold and, thus, were of high quality. The data are accessible to the public and can be downloaded from the National Center for Biotechnology Information (<https://www.ncbi.nlm.nih.gov/assembly/>). The BLAST 2.10.0 + stand-alone software package was used for searching ALOX- and PGHS-like sequences in the genomes and to process the downloaded data. Initially, the makeblastdb program that converts fasta files to BLAST database files was used for creating a separate database for each species. Species-specific ALOX- and PGHS-like sequences were identified by screening each organism database using the corresponding sequences of the orthologous human genes employing the tblastn/blastn programs. The sequence hits identified were then analyzed on DNASTAR Lasergene (DNAS Inc., Madison, WI, USA), and the complete PGHS and ALOX sequences for each organism were identified. From the genomic sequences, we extracted the amino acid sequences and the protein database sequences were corrected for the genomic sequences if differences were observed. For amino acid alignments, we used the online tool [https://www.ebi.ac.uk/Tools/psa/emboss\\_needle/](https://www.ebi.ac.uk/Tools/psa/emboss_needle/).

### Cloning of ALOX15 orthologs of marine mammals

To test the functionality of selected ALOX15 orthologs of marine mammals, we first extracted the cDNAs from the genomic sequence and optimized the coding regions for prokaryotic expression. Single amino acids missing in the extracted coding sequences were replaced by comparison with the sequences of the next relatives (mink whale, baiji, beluga). A *SalI* restriction site was introduced immediately upstream of the starting ATG of the his-tag fusion

construct, and a *HindIII* recognition sequence was designed downstream of the stop codon. Internal *HindIII* and *SalI* sites were eliminated by silent nucleotide exchanges, and the construct was chemically synthesized (BioCat GmbH, Heidelberg, Germany). For prokaryotic expression, the construct was excised from the synthesizing vector (pUC57) and cloned into the expression plasmid pET28b (Novagen/Merck, Darmstadt, Germany). Recombinant expression plasmids were tested for the ALOX15 inserts by *SalI* + *HindIII* digestion, and the final expression constructs were sequenced (Eurofins Genomics Germany GmbH, Ebersberg, Germany).

### Bacterial expression of ALOX15 orthologs

Competent bacteria (Rosetta 2 DE3 pLysS) were transformed with 100 ng of recombinant expression plasmids, and the cells were grown overnight on kanamycin/chloramphenicol containing agar plates. An isolated growing clone was selected and two 1 mL bacterial liquid cultures (LB medium with 50  $\mu\text{g}\cdot\text{mL}^{-1}$  kanamycin/35  $\mu\text{g}\cdot\text{mL}^{-1}$  chloramphenicol) were grown at 37°C. This preculture was added to a 50 mL main culture, and the cells were grown to reach an optical density ( $A_{600}$ ) of 0.10–0.15. The culture medium [glucose-free MSM with added trace elements] [85] was supplemented with 40  $\text{g}\cdot\text{L}^{-1}$  dextrin, 0.24  $\text{g}\cdot\text{L}^{-1}$  tryptone/peptone, and 0.48  $\text{g}\cdot\text{L}^{-1}$  yeast extract. Antibiotics as well as 100  $\mu\text{L}$  1:20 diluted antifoam 204 (Sigma, Deisenhofen, Germany) and 50  $\mu\text{L}$  Glucoamylase from *Aspergillus niger* (Amylase AG 300L, Novozymes, Bagsværd, Denmark) were added, and then, the main cultures were started in Ultra Yield flasks (Thomson Instrument Company, Ocean-side, USA). After the  $OD_{600}$  had reached values above 5, expression of the recombinant his-tag fusion proteins was induced by the addition of 1 mM (final concentration) IPTG, 60 mg tryptone/peptone, 120 mg yeast extract, and 75–100  $\mu\text{L}$  Glucoamylase were added. Then, the cultures were maintained at 22 °C for 18 h at 230–250 rpm agitation. Bacteria were harvested, the resulting pellet was reconstituted in a total volume of 5 mL PBS, and bacteria were lysed by sonication (digital sonifier, W-250D Microtip Model 102, 50% maximal sonication amplitude; Branson Ultrasonics, Fürth, Germany). Debris was spun down (15 min, 15 000 g, 4 °C), and the lysate supernatants were employed as enzyme source. For more drastic bacterial lysis (baiji ALOX15), high-pressure homogenization (Avestin Emulsiflex C5, Ottawa, Canada) was used.

### Eukaryotic expression of ALOX15 orthologs in Sf9 cells

The expression was performed as described [84]. Briefly, the coding sequence was ligated into the pFastBac HT vector and the bacmid as well as the recombinant baculovirus

generated according to the manufacturer's instructions (Bac-to-Bac® Baculovirus Expression System, Invitrogen Life Technologies/Thermo Fisher, Schwerte, Germany). Protein expression was initiated in Sf9 cells (ATCC® CRL-1711) cultured using Insect Xpress Medium (Biozym, Hessisch Oldendorf, Germany) supplemented with 4mM glutamine and 0.5% FBS. The cells were infected and subsequently incubated at 27°C and 120–130 rpm on a shaking platform. After 72 h (30% dead cells), the cells were harvested by centrifugation and lysed by sonication and the lysate supernatant after centrifugation was used as enzyme source.

### SDS/PAGE and western blot

SDS/PAGE was performed as described in Ref. [77]. In brief, a 7.5% polyacrylamide gel was run with ProSieve Ex running buffer (Lonza Group Ltd., Basel, Switzerland) in a Bio-Rad electrophoretic chamber, and afterward, the proteins were transferred on a Protran BA 85 Membrane (Carl Roth GmbH, Karlsruhe, Germany). The membrane was blocked, washed, and finally incubated with an anti-His-HRP antibody (Miltenyi Biotec GmbH, Bergisch Gladbach, Germany) for 1–2 h at room temperature. After washing steps, the membrane was developed with SERVA-Light Polaris CL HRP WB Substrate Kit for 5 min at room temperature. Chemiluminescence was detected on a FUJIFILM Luminescent Image Analyzer LAS-1000plus & Intelligent Dark Box II. For each sample, 5 µL of the lysate supernatant was applied and denatured using ProSieve ProTrack Dual Color Protein Loading Buffer + DTT for 3 min at 95 °C.

### Site-directed mutagenesis

About 10–50 ng of plasmid DNA was incubated with the specific primer pair (1 µL of 5 µM solution each) and 12.5 µL of Pfu Ultra II Hot Start 2 × PCR Master Mix (Agilent Technologies, Waldbronn, Germany) in a total volume of 25 µL adjusted with sterile water. The PCR protocol was designed as follows: 95 °C for 1-min initial denaturation, cycle: 95 °C for 30s > 55 °C for 60s > 68 °C for 10 min; altogether, 18 cycles were applied. Subsequently, the parent DNA was digested with 1 µL DpnI (Thermo Scientific, Schwerte, Germany) for 30min, followed by denaturation at 80 °C for 10 min. About 8 µL of the PCR sample was used for transformation of 100 µL of *E. coli* XL-1 Blue competent cells (Agilent Technologies Inc., Santa Clara, USA). After incubation for 30 min on ice, the cells were heat-shocked for 45 s at 42 °C and kept on ice for 2 min, and then, 400 µL of SOC medium was added. After 1-h incubation at 37 °C and 180 rpm, the cells were plated on an LB-agar plate supplemented with 50 µg·mL<sup>-1</sup> kanamycin (for pET28b) or 100 µg·mL<sup>-1</sup>

ampicillin (for pFastBac HT) and incubated overnight at 37 °C. Four clones were selected for liquid culture in 2 mL of LB medium, and plasmid DNA was prepared using the NucleoSpin Plasmid Kit (Macherey & Nagel, Düren, Germany). One clone was selected for sequencing (Eurofins Genomics Germany GmbH, Ebersberg, Germany).

### Activity assays and HPLC analysis

To assay the catalytic activity of the recombinant ALOX15 orthologs, variable amounts of the bacterial lysis supernatants were added to 0.5 mL of PBS containing 100 µM arachidonic acid as substrate. After 8 min of incubation, the hydroperoxy fatty acids were reduced by the addition of 1 mg of solid sodium borohydride, and after 5 min, the reaction mixture was acidified with 45 µL of concentrated acetic acid. Then, the proteins were denatured by the addition of 0.5 mL acetonitrile and precipitates were removed by centrifugation. Aliquots (50–300 µL) of the clear supernatants were injected to RP-HPLC analyses on a Shimadzu instrument, which was connected to a Hewlett Packard diode array detector 1040 A. Metabolites were separated on a Nucleodur C18 Gravity column (Macherey-Nagel, Düren, Germany; 250 × 4 mm, 5 µm particle size) coupled with a corresponding guard column (8 × 4 mm, 5 µm particle size). A solvent system consisting of acetonitrile:water:acetic acid (70 : 30 : 0.1, by vol) was used at a flow rate of 1 mL·min<sup>-1</sup>.

For more detailed analysis, the conjugated dienes were prepared by RP-HPLC and further analyzed by normal-phase HPLC (NP-HPLC) and/or chiral-phase HPLC (CP-HPLC). Normal-phase HPLC was performed on a Nucleosil 100-5 column (250 × 4.6 mm, 5 µm particle size) using the solvent system n-hexane/2-propanol/acetic acid (100/2/0.1, by volume) at a flow rate of 1 mL·min<sup>-1</sup>. 12-HETE enantiomers were resolved on a Chiralpak AD-H column (Daicel Corp., Osaka, Japan) with a solvent system consisting of n-hexane/methanol/ethanol/acetic acid (96 : 3 : 1 : 0.1, by vol, 1 mL·min<sup>-1</sup>).

### Membrane oxygenase activity

To test the membrane oxygenase activity of the ALOX15 orthologs, we incubated different volumes of the bacterial lysis supernatants in 0.5 mL PBS with submitochondrial particles (1.4 mg·mL<sup>-1</sup> final membrane protein concentration). After 15 min, the reaction was stopped by the addition of 1 mg of sodium borohydride. Then, the sample was acidified with acetic acid, total lipids were extracted [86], and the ester lipids were hydrolyzed. After acidification, aliquots of the hydrolysates were analyzed by RP-HPLC and the chromatograms were followed simultaneously at 235 nm (conjugated dienes) and at 210 nm (nonoxidized polyenoic fatty acids). Quantifying the peak areas of the



major polyenoic fatty acids (LA + AA) and the conjugated dienes formed, we calculated the hydroxy PUFA/PUFA ratio, which constitutes a suitable measure for the degree of oxygenation of the membrane ester lipids [69].

## Statistics

Statistical calculations and figure design were performed using MS Excel 2016 or GRAPHPAD PRISM version 8.00 for Windows (GraphPad Software, La Jolla, CA, USA, www.graphpad.com).

## Acknowledgements

This work was supported by grants from the Deutsche Forschungsgemeinschaft—DFG (KU961/13-1, KU961/14-1 to H.K., HE8295/1-1 to D.H.).

## Conflict of interest

The authors declare no conflict of interest.

## Author contributions

FR, HK, and DH designed the study and planned the experiments. FR, KRK and DH performed the database searches, and SS and DH designed the expression strategies and the expression vectors. FR and SS prepared the enzymes and characterized the enzyme preparations. HK drafted the manuscript, and all co-authors contributed to the preparation of the submitted version.

## References

- Harwood J (2001) Marine mammals and their environment in the twenty-first century. *J Mammal* **82**, 630–640.
- Pompa S, Ehrlich PR & Ceballos G (2011) Global distribution and conservation of marine mammals. *Proc Natl Acad Sci U S A* **108**, 13600–5.
- Kaschner K, Tittensor DP, Ready J, Gerrodette T & Worm B (2011) Current and future patterns of global marine mammal biodiversity. *PLoS One* **6**, e19653.
- Uhen MD (2007) Evolution of marine mammals: back to the sea after 300 million years. *Anat Rec (Hoboken)* **290**, 514–22.
- Vermeij GJ & Motani R (2018) Land to sea transitions in vertebrates: the dynamics of colonization. *Paleobiology* **44**, 237–250.
- Jefferson TA, Webber MA & Pitman RL (2015) *Marine Mammals of the World. A Comprehensive Guide to their Identification*, 2nd edn, pp. 1–616. Elsevier, Amsterdam. <https://doi.org/10.1016/C2012-0-06919-0>
- Graur D & Higgins DG (1994) Molecular evidence for the inclusion of cetaceans within the order artiodactyla. *Mol Biol Evol* **11**, 357–364.
- Montgelard C, Catzeflis FM & Douzery E (1997) Phylogenetic relationships of artiodactyls and cetaceans as deduced from the comparison of cytochrome b and 12S rRNA mitochondrial sequences. *Mol Biol Evol* **14**, 550–559.
- Arnason U, Gullberg A, Janke A, Kullberg M, Lehman N, Petrov EA & Vainola R (2006) Pinniped phylogeny and a new hypothesis for their origin and dispersal. *Mol Phylogenet Evol* **41**, 345–354.
- Kurten (1964) The evolution of the polar bear. *Ursus maritimus* Phipps. *Acta Zoologica Fennica*. **108**, 1–30.
- Lindqvist C, Schuster SC, Sun Y, Talbot SL, Qi J, Ratan A, Tomsho LP, Kasson L, Zeyl E, Aars J *et al.* (2010) Complete mitochondrial genome of a Pleistocene jawbone unveils the origin of polar bear. *Proc Natl Acad Sci U S A* **107**, 5053–7.
- Wang D & Dubois RN (2010) Eicosanoids and cancer. *Nat Rev Cancer* **10**, 181–93.
- Michael J, Marschallinger J & Aigner L (2019) The leukotriene signaling pathway: a druggable target in Alzheimer's disease. *Drug Discov Today* **24**, 505–516.
- Wang T, Fu X, Chen Q, Patra JK, Wang D, Wang Z & Gai Z. (2019) Arachidonic acid metabolism and kidney inflammation. *Int J Mol Sci* **20**.
- Dubois RN, Abramson SB, Crofford L, Gupta RA, Simon LS, Van De Putte LB & Lipsky PE (1998) Cyclooxygenase in biology and disease. *FASEB J* **12**, 1063–73.
- Kuhn H, Banthiya S & van Leyen K (2015) Mammalian lipoxygenases and their biological relevance. *Biochim Biophys Acta* **1851**, 308–30.
- Spector AA & Kim HY (2015) Cytochrome P450 epoxygenase pathway of polyunsaturated fatty acid metabolism. *Biochim Biophys Acta* **1851**, 356–65.
- Smith WL & Langenbach R (2001) Why there are two cyclooxygenase isozymes. *J Clin Invest* **107**, 1491–5.
- Smith WL, Urade Y & Jakobsson PJ (2011) Enzymes of the cyclooxygenase pathways of prostanoid biosynthesis. *Chem Rev* **111**, 5821–65.
- Garavito RM, Malkowski MG & DeWitt DL (2002) The structures of prostaglandin endoperoxide H synthases-1 and -2. *Prostaglandins Other Lipid Mediat* **68–69**, 129–52.
- Rouzer CA & Marnett LJ (2009) Cyclooxygenases: structural and functional insights. *J Lipid Res* **50** (Suppl), S29–34.
- Marnett LJ (2009) The COXIB experience: a look in the rearview mirror. *Annu Rev Pharmacol Toxicol* **49**, 265–90.
- Bergh MS & Budsberg SC (2005) The coxib NSAIDs: potential clinical and pharmacologic importance in veterinary medicine. *J Vet Intern Med* **19**, 633–43.

- 24 van Leyen K, Duvoisin RM, Engelhardt H & Wiedmann M (1998) A function for lipoxygenase in programmed organelle degradation. *Nature* **395**, 392–5.
- 25 Schewe T, Rapoport SM & Kuhn H (1986) Enzymology and physiology of reticulocyte lipoxygenase: comparison with other lipoxygenases. *Adv Enzymol Relat Areas Mol Biol* **58**, 191–272.
- 26 Anthonymuthu TS, Kenny EM, Shrivastava I, Tyurina YY, Hier ZE, Ting HC, Dar HH, Tyurin VA, Nesterova A, Amoscato AA *et al.* (2018) Empowerment of 15-lipoxygenase catalytic competence in selective oxidation of membrane ETE-PE to ferroptotic death signals. *HpETE-PE. J Am Chem Soc* **140**, 17835–17839.
- 27 Morgan AH, Hammond VJ, Sakoh-Nakatogawa M, Ohsumi Y, Thomas CP, Blanchet F, Piguet V, Kiselyov K & O'Donnell VB (2015) A novel role for 12/15-lipoxygenase in regulating autophagy. *Redox Biol* **4**, 40–7.
- 28 Ackermann JA, Hofheinz K, Zaiss MM & Kronke G (2017) The double-edged role of 12/15-lipoxygenase during inflammation and immunity. *Biochim Biophys Acta* **1862**, 371–381.
- 29 Ivanov I, Kuhn H & Heydeck D (2015) Structural and functional biology of arachidonic acid 15-lipoxygenase-1 (ALOX15). *Gene* **573**, 1–32.
- 30 Choi J, Chon JK, Kim S & Shin W (2008) Conformational flexibility in mammalian 15S-lipoxygenase: reinterpretation of the crystallographic data. *Proteins* **70**, 1023–32.
- 31 Gillmor SA, Villasenor A, Fletterick R, Sigal E & Browner MF (1997) The structure of mammalian 15-lipoxygenase reveals similarity to the lipases and the determinants of substrate specificity. *Nat Struct Biol* **4**, 1003–9.
- 32 Borngraber S, Browner M, Gillmor S, Gerth C, Anton M, Fletterick R & Kuhn H (1999) Shape and specificity in mammalian 15-lipoxygenase active site. The functional interplay of sequence determinants for the reaction specificity. *J Biol Chem* **274**, 37345–50.
- 33 Coffa G & Brash AR (2004) A single active site residue directs oxygenation stereospecificity in lipoxygenases: stereocontrol is linked to the position of oxygenation. *Proc Natl Acad Sci U S A* **101**, 15579–84.
- 34 Adel S, Karst F, Gonzalez-Lafont A, Pekarova M, Saura P, Masgrau L, Lluch JM, Stehling S, Horn T, Kuhn H *et al.* (2016) Evolutionary alteration of ALOX15 specificity optimizes the biosynthesis of antiinflammatory and proresolving lipoxins. *Proc Natl Acad Sci U S A* **113**, E4266–75.
- 35 Kuhn H, Humeniuk L, Kozlov N, Roigas S, Adel S & Heydeck D (2018) The evolutionary hypothesis of reaction specificity of mammalian ALOX15 orthologs. *Prog Lipid Res* **72**, 55–74.
- 36 Coffa G, Schneider C & Brash AR (2005) A comprehensive model of positional and stereo control in lipoxygenases. *Biochem Biophys Res Commun* **338**, 87–92.
- 37 Brash AR, Boeglin WE & Chang MS (1997) Discovery of a second 15S-lipoxygenase in humans. *Proc Natl Acad Sci U S A* **94**, 6148–52.
- 38 Jisaka M, Kim RB, Boeglin WE & Brash AR (2000) Identification of amino acid determinants of the positional specificity of mouse 8S-lipoxygenase and human 15S-lipoxygenase-2. *J Biol Chem* **275**, 1287–93.
- 39 Vogel R, Jansen C, Roffeis J, Reddanna P, Forsell P, Claesson HE, Kuhn H & Walther M (2010) Applicability of the triad concept for the positional specificity of mammalian lipoxygenases. *J Biol Chem* **285**, 5369–76.
- 40 Hamberg M & Samuelsson B (1974) Prostaglandin endoperoxides. Novel transformations of arachidonic acid in human platelets. *Proc Natl Acad Sci U S A* **71**, 3400–4.
- 41 Johnson EN, Brass LF & Funk CD (1998) Increased platelet sensitivity to ADP in mice lacking platelet-type 12-lipoxygenase. *Proc Natl Acad Sci U S A* **95**, 3100–5.
- 42 Johnson EN, Nanney LB, Virmani J, Lawson JA & Funk CD (1999) Basal transepidermal water loss is increased in platelet-type 12-lipoxygenase deficient mice. *J Invest Dermatol* **112**, 861–5.
- 43 Allen-Redpath K, Aldrovandi M, Lauder SN, Gketsopoulou A, Tyrrell VJ, Slatter DA, Andrews R, Watkins WJ, Atkinson G, McNeill E *et al.* (2019) Phospholipid membranes drive abdominal aortic aneurysm development through stimulating coagulation factor activity. *Proc Natl Acad Sci U S A* **116**, 8038–8047.
- 44 Sun D, McDonnell M, Chen XS, Lakkis MM, Li H, Isaacs SN, Elsea SH, Patel PI & Funk CD (1998) Human 12(R)-lipoxygenase and the mouse ortholog. Molecular cloning, expression, and gene chromosomal assignment. *J Biol Chem* **273**, 33540–7.
- 45 Krieg P, Siebert M, Kinzig A, Bettenhausen R, Marks F & Fürstenberger G (1999) Murine 12(R)-lipoxygenase: functional expression, genomic structure and chromosomal localization. *FEBS Lett* **446**, 142–8.
- 46 Epp N, Fürstenberger G, Müller K, de Juanes S, Leitges M, Hausser I, Thieme F, Liebisch G, Schmitz G & Krieg P (2007) 12R-lipoxygenase deficiency disrupts epidermal barrier function. *J Cell Biol* **177**, 173–82.
- 47 Eckl KM, de Juanes S, Kurtenbach J, Natebus M, Lugassy J, Oji V, Traupe H, Preil ML, Martinez F, Smolle J *et al.* (2009) Molecular analysis of 250 patients with autosomal recessive congenital ichthyosis: evidence for mutation hotspots in ALOXE3 and allelic heterogeneity in ALOX12B. *J Invest Dermatol* **129**, 1421–8.
- 48 Meruvu S, Walther M, Ivanov I, Hammarstrom S, Fürstenberger G, Krieg P, Reddanna P & Kuhn H (2005) Sequence determinants for the reaction specificity

- of murine (12R)-lipoxygenase: targeted substrate modification and site-directed mutagenesis. *J Biol Chem* **280**, 36633–41.
- 49 Krieg P & Furstenberger G (2014) The role of lipoxygenases in epidermis. *Biochim Biophys Acta* **1841**, 390–400.
  - 50 Brash AR, Yu Z, Boeglin WE & Schneider C (2007) The hepxilin connection in the epidermis. *FEBS J* **274**, 3494–502.
  - 51 Kinzig A, Fürstenberger G, Bürger F, Vogel S, Müller-Decker K, Mincheva A, Lichter P, Marks F & Krieg P (1997) Murine epidermal lipoxygenase (Aloxe) encodes a 12-lipoxygenase isoform. *FEBS Lett* **402**, 162–6.
  - 52 Kinzig A, Heidt M, Furstenberger G, Marks F & Krieg P (1999) cDNA cloning, genomic structure, and chromosomal localization of a novel murine epidermis-type lipoxygenase. *Genomics* **58**, 158–64.
  - 53 Funk CD, Keeney DS, Oliw EH, Boeglin WE & Brash AR (1996) Functional expression and cellular localization of a mouse epidermal lipoxygenase. *J Biol Chem* **271**, 23338–44.
  - 54 Krieg P, Rosenberger S, de Juanes S, Latzko S, Hou J, Dick A, Kloz U, van der Hoeven F, Hausser I, Esposito I *et al.* (2013) Aloxe3 knockout mice reveal a function of epidermal lipoxygenase-3 as hepxilin synthase and its pivotal role in barrier formation. *J Invest Dermatol* **133**, 172–80.
  - 55 Zheng Y & Brash AR (2010) On the role of molecular oxygen in lipoxygenase activation: comparison and contrast of epidermal lipoxygenase-3 with soybean lipoxygenase-1. *J Biol Chem* **285**, 39876–87.
  - 56 Yu Z, Schneider C, Boeglin WE & Brash AR (2006) Human and mouse eLOX3 have distinct substrate specificities: implications for their linkage with lipoxygenases in skin. *Arch Biochem Biophys* **455**, 188–96.
  - 57 Zheng Y & Brash AR (2010) Dioxygenase activity of epidermal lipoxygenase-3 unveiled: typical and atypical features of its catalytic activity with natural and synthetic polyunsaturated fatty acids. *J Biol Chem* **285**, 39866–75.
  - 58 Radmark O, Werz O, Steinhilber D & Samuelsson B (2015) 5-Lipoxygenase, a key enzyme for leukotriene biosynthesis in health and disease. *Biochim Biophys Acta* **1851**, 331–339.
  - 59 Haeggstrom JZ & Funk CD (2011) Lipoxygenase and leukotriene pathways: biochemistry, biology, and roles in disease. *Chem Rev* **111**, 5866–98.
  - 60 Gilbert NC, Bartlett SG, Waight MT, Neau DB, Boeglin WE, Brash AR & Newcomer ME (2011) The structure of human 5-lipoxygenase. *Science* **331**, 217–9.
  - 61 Chen XS, Sheller JR, Johnson EN & Funk CD (1994) Role of leukotrienes revealed by targeted disruption of the 5-lipoxygenase gene. *Nature* **372**, 179–82.
  - 62 Zhao L, Moos MP, Grabner R, Pedrono F, Fan J, Kaiser B, John N, Schmidt S, Spanbroek R, Lotzer K *et al.* (2004) The 5-lipoxygenase pathway promotes pathogenesis of hyperlipidemia-dependent aortic aneurysm. *Nat Med* **10**, 966–73.
  - 63 Kuhn H, Chaitidis P, Roffeis J & Walther M (2007) Arachidonic Acid metabolites in the cardiovascular system: the role of lipoxygenase isoforms in atherogenesis with particular emphasis on vascular remodeling. *J Cardiovasc Pharmacol* **50**, 609–20.
  - 64 Kühn H, Barnett J, Grunberger D, Baecker P, Chow J, Nguyen B, Bursztyn-Pettegrew H, Chan H & Sigal E (1993) Overexpression, purification and characterization of human recombinant 15-lipoxygenase. *Biochim Biophys Acta* **1169**, 80–89.
  - 65 Sigal E, Grunberger D, Highland E, Gross C, Dixon RA & Craik CS (1990) Expression of cloned human reticulocyte 15-lipoxygenase and immunological evidence that 15-lipoxygenases of different cell types are related. *J Biol Chem* **265**, 5113–5120.
  - 66 Bryant RW, Bailey JM, Schewe T & Rapoport SM (1982) Positional specificity of a reticulocyte lipoxygenase. Conversion of arachidonic acid to 15-S-hydroperoxy-eicosatetraenoic acid. *J Biol Chem* **257**, 6050–6055.
  - 67 Pekarova M, Kuhn H, Bezakova L, Ufer C & Heydeck D (2015) Mutagenesis of triad determinants of rat AloX15 alters the specificity of fatty acid and phospholipid oxygenation. *Arch Biochem Biophys* **571**, 50–57.
  - 68 Ludwig P, Holzthutter HG, Colosimo A, Silvestrini MC, Schewe T & Rapoport SM (1987) A kinetic model for lipoxygenases based on experimental data with the lipoxygenase of reticulocytes. *Eur J Biochem* **168**, 325–337.
  - 69 Kuhn H, Belkner J, Wiesner R & Brash AR (1990) Oxygenation of biological membranes by the pure reticulocyte lipoxygenase. *J Biol Chem* **265**, 18351–18361.
  - 70 Takahashi Y, Glasgow WC, Suzuki H, Taketani Y, Yamamoto S, Anton M, Kuhn H & Brash AR (1993) Investigation of the oxygenation of phospholipids by the porcine leukocyte and human platelet arachidonate 12-lipoxygenases. *Eur J Biochem* **218**, 165–171.
  - 71 Banthiya S, Kalms J, Galemou Yoga E, Ivanov I, Carpena X, Hamberg M, Kuhn H & Scheerer P (2016) Structural and functional basis of phospholipid oxygenase activity of bacterial lipoxygenase from *Pseudomonas aeruginosa*. *Biochim Biophys Acta* **1861**, 1681–1692.
  - 72 Sloane DL, Dixon RA, Craik CS & Sigal E (1991) Expression of cloned human 15-lipoxygenase in eukaryotic and prokaryotic systems. *Adv Prostaglandin Thromboxane Leukot Res* **21A**, 25–28.

- 73 Chen XS, Kurre U, Jenkins NA, Copeland NG & Funk CD (1994) cDNA cloning, expression, mutagenesis of C-terminal isoleucine, genomic structure, and chromosomal localizations of murine 12-lipoxygenases. *J Biol Chem* **269**, 13979–13987.
- 74 Watanabe T & Haeggstrom JZ (1993) Rat 12-lipoxygenase: mutations of amino acids implicated in the positional specificity of 15- and 12-lipoxygenases. *Biochem Biophys Res Commun* **192**, 1023–1029.
- 75 Zhang HP, Jia CE, Lv Y, Gibson PG & Wang G (2014) Montelukast for prevention and treatment of asthma exacerbations in adults: systematic review and meta-analysis. *Allergy Asthma Proc* **35**, 278–287.
- 76 Epp N, Furstenberger G, Muller K, de Juanes S, Leitges M, Hausser I, Thieme F, Liebisch G, Schmitz G & Krieg P (2007) 12R-lipoxygenase deficiency disrupts epidermal barrier function. *J Cell Biol* **177**, 173–182.
- 77 Schafer M, Fan Y, Gu T, Heydeck D, Stehling S, Ivanov I, Yao YG & Kuhn H (2019) The lipoxygenase pathway of *Tupaia belangeri* representing Scandentia. Genomic multiplicity and functional characterization of the ALOX15 orthologs in the tree shrew. *Biochim Biophys Acta Mol Cell Biol Lipids* **1865**, 158550.
- 78 Juranek I, Suzuki H & Yamamoto S (1999) Affinities of various mammalian arachidonate lipoxygenases and cyclooxygenases for molecular oxygen as substrate. *Biochim Biophys Acta* **1436**, 509–518.
- 79 Kalms J, Banthiya S, Galemou Yoga E, Hamberg M, Holzhutter HG, Kuhn H & Scheerer P (2017) The crystal structure of *Pseudomonas aeruginosa* lipoxygenase Ala420Gly mutant explains the improved oxygen affinity and the altered reaction specificity. *Biochim Biophys Acta* **1862**, 463–473.
- 80 Schewe T, Halangk W, Hiebsch C & Rapoport SM (1975) A lipoxygenase in rabbit reticulocytes which attacks phospholipids and intact mitochondria. *FEBS Lett* **60**, 149–152.
- 81 Ivanov I, Heydeck D, Hofheinz K, Roffeis J, O'Donnell VB, Kuhn H & Walther M (2010) Molecular enzymology of lipoxygenases. *Arch Biochem Biophys* **503**, 161–174.
- 82 Borngraber S, Kuban RJ, Anton M & Kuhn H (1996) Phenylalanine 353 is a primary determinant for the positional specificity of mammalian 15-lipoxygenases. *J Mol Biol* **264**, 1145–1153.
- 83 Sloane DL, Leung R, Craik CS & Sigal E (1991) A primary determinant for lipoxygenase positional specificity. *Nature* **354**, 149–152.
- 84 Kozlov N, Humeniuk L, Ufer C, Ivanov I, Golovanov A, Stehling S, Heydeck D & Kuhn H (2019) Functional characterization of novel ALOX15 orthologs representing key steps in mammalian evolution supports the Evolutionary Hypothesis of reaction specificity. *Biochim Biophys Acta Mol Cell Biol Lipids* **1864**, 372–385.
- 85 Krause M, Ukkonen K, Haataja T, Ruottinen M, Glumoff T, Neubauer A, Neubauer P & Vasala A (2010) A novel fed-batch based cultivation method provides high cell-density and improves yield of soluble recombinant proteins in shaken cultures. *Microb Cell Fact* **9**, 11.
- 86 Bligh EG & Dyer WJ (1959) A rapid method of total lipid extraction and purification. *Can J Biochem Physiol* **37**, 911–917.
- 87 Goloshchapova K, Stehling S, Heydeck D, Blum M & Kuhn H (2019) Functional characterization of a novel arachidonic acid 12S-lipoxygenase in the halotolerant bacterium *Myxococcus fulvus* exhibiting complex social living patterns. *Microbiologyopen* **8**. <https://doi.org/10.1002/mbo3.775>

## Supporting information

Additional supporting information may be found online in the Supporting Information section at the end of the article.

**Table S1.** Presence of ALOX15B orthologs in different marine mammals.

**Table S2.** Presence of ALOX12 orthologs in different marine mammals.

**Table S3.** Presence of ALOX12B orthologs in different marine mammals.

**Table S4.** Presence of ALOXE3 orthologs in different marine mammals.

**Table S5.** Presence of ALOX5 orthologs in different marine mammals.

**Figure S1.** Amino acid alignments of COX1 orthologs of different marine mammals with human COX1.

**Figure S2.** Amino acid alignments of COX2 orthologs of different marine mammals with human COX2.

**Figure S3.** Amino acid alignments of ALOX15 orthologs of different marine mammals.

**Figure S4.** Amino acid alignments of ALOX15B orthologs of different marine mammals.

**Figure S5.** Amino acid alignments of ALOX12 orthologs of different marine mammals.

**Figure S6.** Amino acid alignments of ALOX12B orthologs of different marine mammals.

**Figure S7.** Amino acid alignments of ALOXE3 orthologs of different marine mammals.

**Figure S8.** Amino acid alignments of ALOX5 orthologs of different marine mammals.

**Figure S9.** Characterization of basic catalytic properties of the northern fur seal ALOX15.

**Figure S10.** Characterization of basic catalytic properties of the Weddell seal ALOX15.

**Figure S11.** Characterization of basic catalytic properties of the walrus ALOX15.