

# Biomarkers and predicting acute kidney injury

Friedrich C. Luft<sup>1,2</sup> 

<sup>1</sup>Experimental and Clinical Research Center, Max-Delbrück Center for Molecular Medicine

<sup>2</sup>Charité Medical Faculty, Berlin, Germany

## Correspondence

Friedrich C. Luft, Experimental and Clinical Research Center, Lindenerberg Weg 80, 13125 Berlin, Germany.  
Email: friedrich.luft@charite.de

## Abstract

**Aim:** How can we convert biomarkers into reliable, validated laboratory tests? Glomerular filtration rate (GFR) estimators exist for more than a century. The first utilitarian biomarkers were endogenously produced urea and creatinine. Clinicians then developed simple tests to determine whether or not renal tubular function was maintained. Are there faster and better tests that reflect decreased renal function and increased acute kidney injury (AKI) risk?

**Methods:** We inspect earlier, and recently propagated biomarkers. Cystatin C reflects GFR and is not confounded by muscle mass. Direct GFR and plasma volume can now be measured acutely within 3 hours. Better yet would be tests that give information before GFR decreases and prior to urea, creatinine, and cystatin C increases. Prospective tests identifying those persons likely to develop AKI would be helpful. Even more utilitarian would be a test that also suggests a therapeutic avenue.

**Results:** A number of highly provocative biomarkers have recently been proposed. Moreover the application of big data from huge electronic medical records promise new directions in identifying and dealing with AKI.

**Conclusions:** Pipedreams are in the pipeline; the novel findings require immediate testing, verification, and perhaps application. Future research promises to make such dreams come true.

## KEYWORDS

acute kidney injury, artificial intelligence, biomarkers

## 1 | INTRODUCTION

Acute kidney injury (AKI) is defined by a rapid increase in serum (or plasma) creatinine, decrease in urine output or both. Acute kidney injury is common and occurs in approximately 15% of patients admitted to hospital, while its incidence in intensive care units has been reported in more than half of patients with a substantial mortality. Acute kidney injury is not a single disease, but instead consists of a loose syndrome collection of conditions including sepsis, cardiovascular causes, nephrotoxicity, urinary tract obstruction and in short—anything that can

cause glomerular filtration rate (GFR) to be reduced quickly.<sup>1</sup> Can the condition be separated from reversible causes? The importance of delineating any unknown acute decrease in renal function into “prerenal,” “renal” and “postrenal” etiologies has not changed since the first renal biomarkers were described and remains the physician's immediate obligation.

The AKI time framework is 7 days. The current AKI definitions are based on two basic criteria: changes in serum creatinine and how much urine is made (oliguria or not?). From those two variables, we can stage AKI into stage 1 (creatinine  $\geq 1.5$  times baseline and/or urine volume  $< 0.5$  mL/kg for

This is an open access article under the terms of the Creative Commons Attribution-NonCommercial License, which permits use, distribution and reproduction in any medium, provided the original work is properly cited and is not used for commercial purposes.

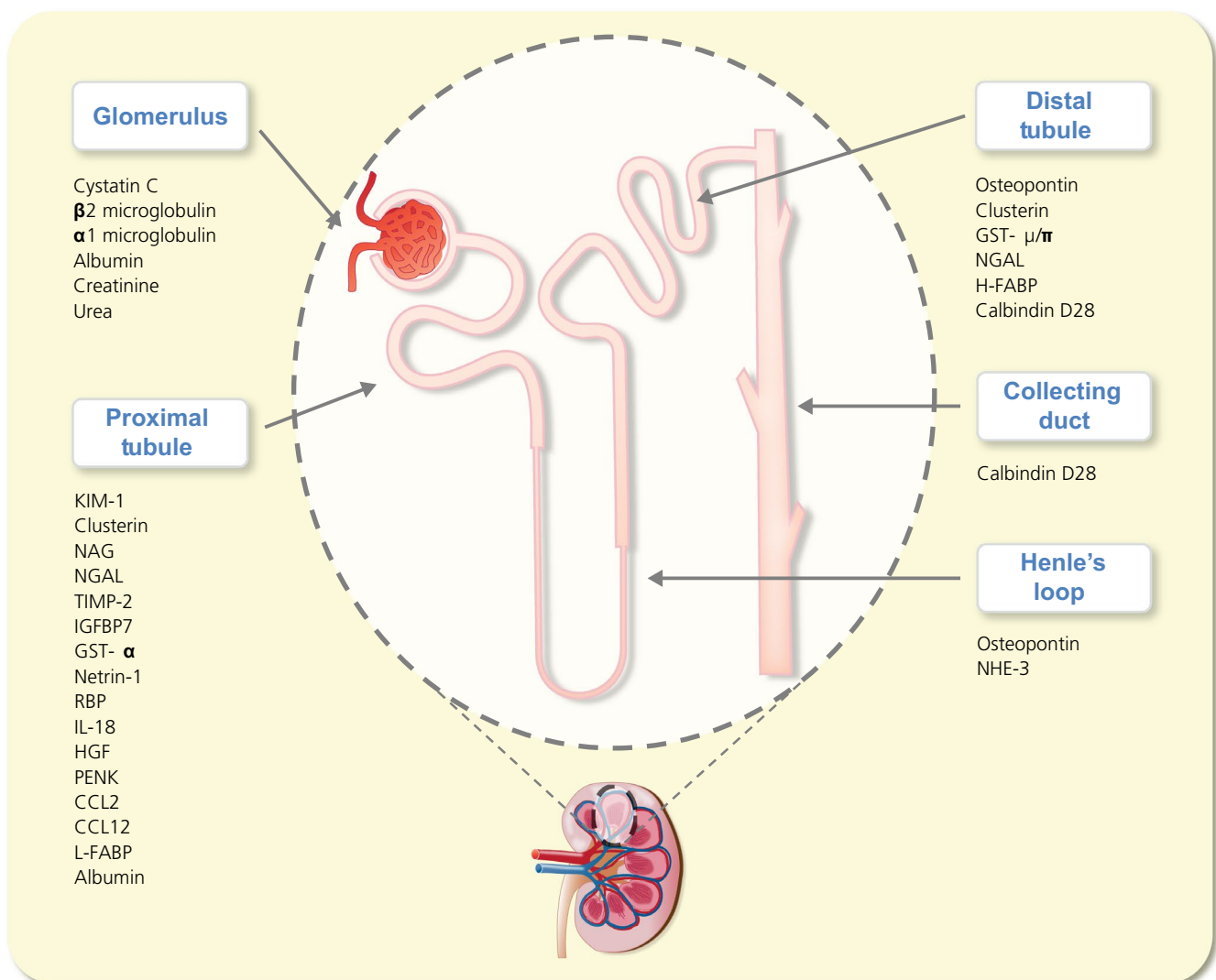
© 2020 The Authors. *Acta Physiologica* published by John Wiley & Sons Ltd on behalf of Scandinavian Physiological Society

6-12 hours); stage 2 (creatinine  $\geq 2$  times baseline or urine volume  $< 0.5$  mL/kg for  $>12$  hours) or stage 3 (creatinine  $\geq 3.0$  times baseline or urine volume  $< 0.3$  mL/kg for  $>24$  hours). These definitions are of great value for classification (chart review) but not invariably helpful for physicians working with acutely ill patients. Creatinine is easily measured, while urine production rate is another matter. Choosing wisely campaigns are aimed to advance a national dialogue on how to avoid unnecessary medical tests, treatments and procedures. Can physicians receive help for their patients at the bedside or (very) shortly thereafter, particularly along the lines of "choosing wisely"? Biomarkers (better than creatinine) could be of assistance. Arguably, the first utilitarian marker for renal disease, AKI, acute kidney disease (AKD) or chronic kidney disease

(CKD), was proteinuria, which we generally attribute to Bright but was probably described a century earlier.<sup>2</sup> What progress has been made in this area up to the present date (Figure 1)?

## 2 | ASSESSMENT GOALS

Any clinical test, biomarkers included, requires addressing certain accepted standards. Sensitivity and specificity are terms used to evaluate a clinical test's utility (positive in disease, negative in health). They are independent on the population of interest. Positive and negative predictive values consider the clinical value of a test. These latter parameters are dependent on the prevalence of the disease in the



**FIGURE 1** Shown is a nephron along which putative "biomarkers" are approximately located. Hope is it that these products arrive in the urine before clinical evidence of decreased glomerular filtration rate (increase in serum creatinine) is apparent. All are dependent upon urine production. Thus, oliguria is a strong confounder. CCL, C-C motif chemokine ligand; GST, glutathione-S-transferase; HGF, hepatocyte growth factor; IGFBP, insulin-like growth factor binding protein; L-FABP, liver-type fatty acid binding protein; NAG, N-acetyl-beta-D-glucosaminidase; NGAL, neutrophil gelatinase associated lipocalin; PENK, proenkefalin; RBP, retinol binding protein; TIMP-2, tissue inhibitor of metalloproteinases-2

population of interest. The sensitivity and specificity of a quantitative test are also subject to the cut-off value, above or below, which the test is positive. In general, the higher the sensitivity, the lower the specificity (and vice versa). Thereafter, receiver-operator characteristics are commonly generated. Receiver-operator characteristics curves plot false positives against true positives for all cut off values. The area under the curve (AUC) of a perfect test is 1.0 (right angle) and that of a useless test, no better than tossing a coin (linear line). "Biomarkers" (albeit trendy) are not excused from these rigorous criteria.

### 3 | GLOMERULAR FILTRATION RATE AND OTHER MARKERS

#### 3.1 | Urea and creatinine

Non-protein nitrogen (urea, biuret and ammonia) was an early marker, but quickly supplanted by urea (in the USA expressed as blood-urea nitrogen).<sup>3</sup> Thereafter, creatinine soon followed. Van Slyke et al developed the concept of "clearance" and in a remarkable paper compared the clearance of urea and creatinine to phenolsulfonphthalein (PSP) excretion in terms of utility.<sup>4</sup> The authors observed that urea clearance falls below 50% of its normal value before blood creatinine content, blood urea content or PSP excretion were altered. The group also observed a unique value in determining the urine (U) to plasma (P) ratio (U/P) to delineate certain conditions. Then how did creatinine obtain the vaunted position it holds today?

Rehberg first proposed the use of creatinine to monitor renal function.<sup>5</sup> The measurement at the time was cumbersome in terms of overestimating serum creatinine at values <88  $\mu\text{mol/L}$ , so Rehberg gave creatinine exogenously. We now know that creatinine is excreted slightly. Thus, Rehberg surely saturated the excretory tubular transporter, resulting in a highly accurate GFR estimate; however, Van Slyke had not yet suggested the clearance concept. Since Rehberg, the creatinine era extends to almost 100 years of research and now GFR is estimated by various formulae (eGFR). The subject has been recently reviewed.<sup>6</sup>

Creatinine is a breakdown product of creatine phosphate from muscle and protein metabolism and is released at a constant rate, depending on the body's muscle mass (Figure 2A). Creatine kinase catalyzes the conversion to phosphocreatine. Formation of the anhydride, creatinine, occurs spontaneously during this process (Figure 2B). Creatinine is eliminated by glomerular filtration; however, very little or no reabsorption of creatinine occurs. There is modest tubular secretion, a fraction that relatively increases as GFR decreases. Since Smith, we know that inulin clearance is the gold standard for determining GFR,<sup>7</sup> although renal or plasma clearance of

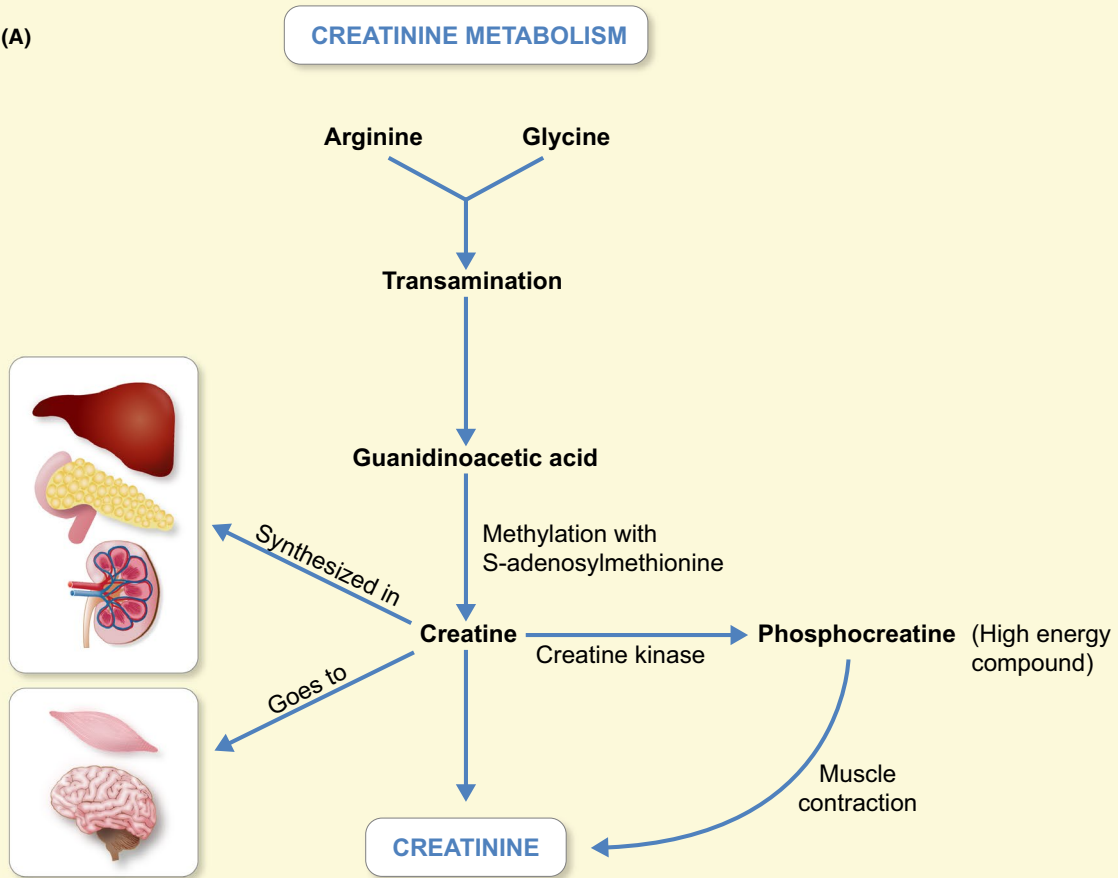
chromium 51-labeled ethylenediaminetetraacetic acid, diethylenetriaminepentaacetic acid, iohexol and iothalamate are as good.<sup>8</sup>

A glance at the relationship between GFR and serum creatinine (Figure 3A) discloses the fact that creatinine is very good when GFR is sharply reduced, but of lesser utility when renal function is largely preserved.<sup>9</sup> As a result, GFR can be reduced by >50% before clinicians notice the elevation. Clinicians earlier relied on clever strategies to circumvent confounders in patients with suspected AKI, particularly when urinary output decreased. Since urea is resorbed by the tubules in a flow-dependent manner (oliguria—increased urea absorption), volume depletion (pre-renal azotemia) should feature a sharper increase in plasma urea than creatinine. Measuring U/P urea and U/P creatinine was an early strategy to diagnose AKI, as was determining tubular function in terms of sodium reabsorption. With a single plasma (or serum) sample, coupled with a simultaneous urine sample (no timed collection is necessary), clinicians can distinguish between AKI and volume depletion by calculating the amount of sodium excreted per the amount filtered by dividing the clearance of sodium by the clearance of creatinine, namely the fractional excretion. Of course, these functional tests are confounded by diuretic treatment and the time interval of administration. A common indignant cause for nephrology consultation in any hospital is: "This patient refuses to respond to Lasix<sup>®</sup>!" At that point, an intellectual confrontation with AKI is probably already too late. Urinary tract obstruction can now be ruled out in minutes with ultrasound. However, some care and clinical acumen is required in these diagnostic processes and therefore the search for more biomarkers continues.

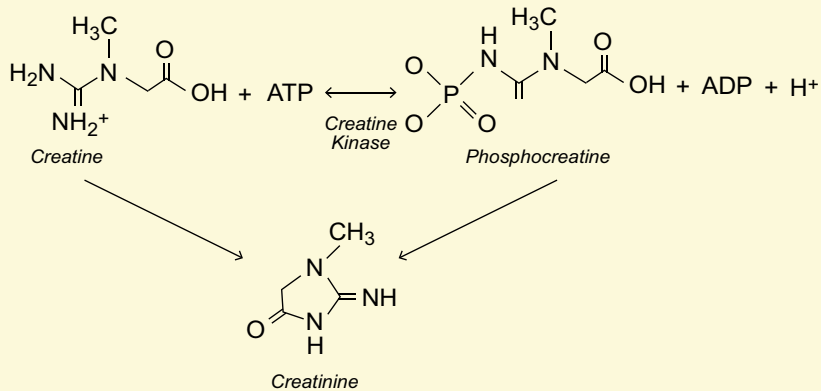
#### 3.2 | Cystatin C

Cystatin C is a cysteine-protease inhibitor (molecular weight 13.3 kD) that is freely filtered but is degraded and/or resorbed in the renal tubule so that none appears in the urine. Since 1985, cystatin C has been suggested as marker of the renal function.<sup>10</sup> The protease has a "house-keeping" function. Cystatin C is produced at a constant rate in all nucleated cells investigated to date, freely filtered in the renal glomeruli and reabsorbed, and catabolized in the proximal tubules. This catabolic process largely involves megalin. Jensen et al<sup>11</sup> showed that cystatin C binds to megalin and cubulin with high affinity. Megalin deficient mice revealed an increased urinary excretion of cystatin C associated with defective uptake by endocytosis. In rats exposed to ischemia/reperfusion injury urinary cystatin C excretion was increased and associated with a focal decrease in proximal tubule endocytosis with no apparent change in megalin

(A)

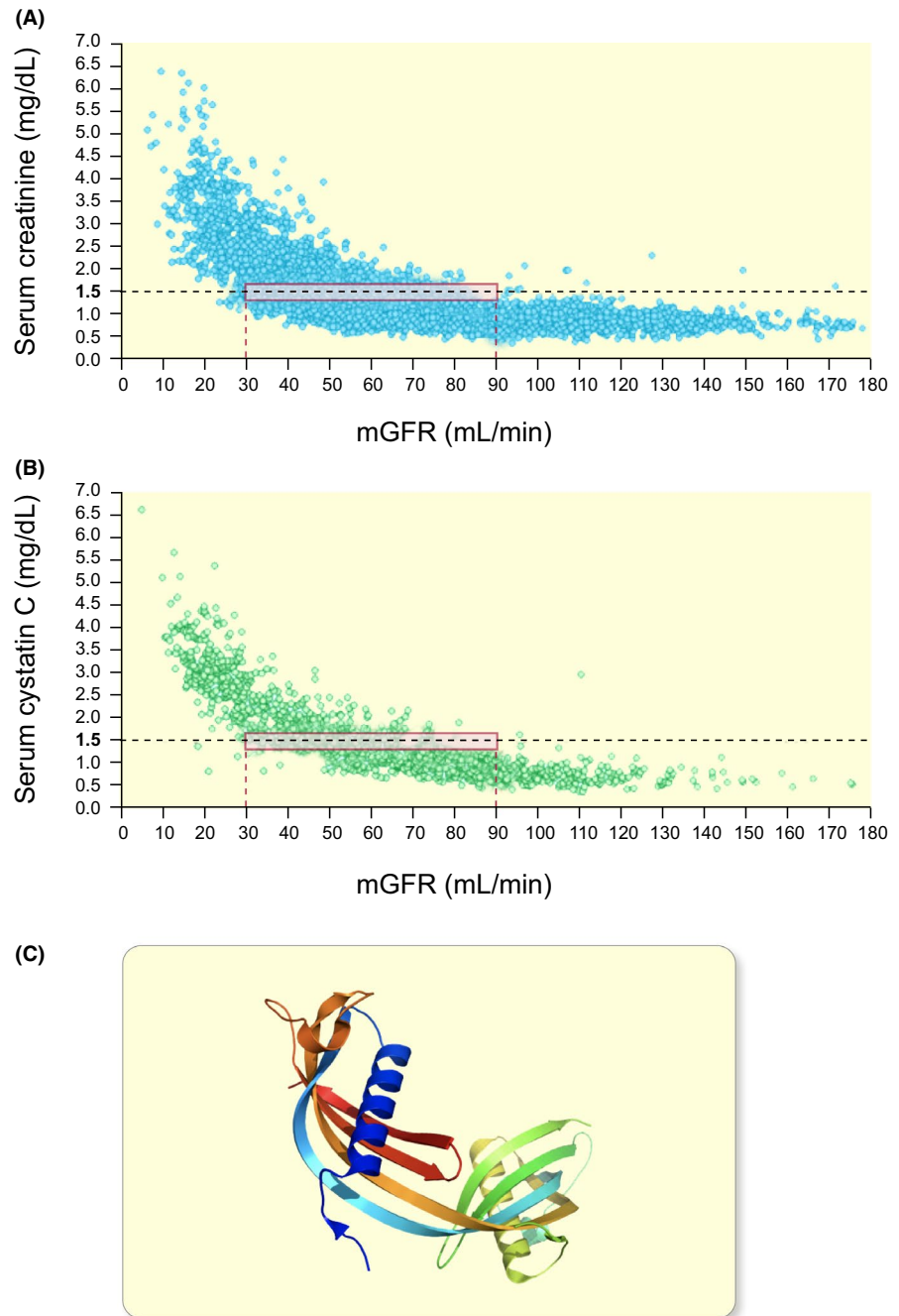


(B)



**FIGURE 2** Pivotal enzyme, creatine phosphokinase, metabolizes substrates to phosphocreatine and to the by-product, creatinine (A). As a result, an anhydride (loss of water) is formed that we term "creatinine" (B). The daily-produced product is freely filtered, nonprotein bound and appears in the urine. The resorption is essentially zero and the secretion is (relatively) trivial

**FIGURE 3** Relationship between serum creatinine and glomerular filtration rate (renal work) is hyperbolic (A). Therefore, lower concentrations are of lesser value in accurately reflecting glomerular filtration rate (GFR) than higher concentrations. Cystatin C has some advantages over creatinine in selected populations (B). However, cystatin C shows similar limitations to creatinine in those subjects with largely-preserved renal function. Cystatin C (ribbon diagram) is a "second-generation" GFR marker, also endogenously produced (C). This marker is produced by our total (nuclear-containing) cell mass (adapted from Porrini et al<sup>9</sup>)



expression. These findings may be of relevance to clinical AKI.

Cystatin C avoids several confounding variables that plague other estimators of GFR. Creatinine is inaccurate at detecting mild renal impairment, and creatinine levels can vary with muscle mass but little (aside from body builders) with protein intake. Urea levels might change with protein intake and are also urine flow rate dependent. Urea reabsorption is heavily dependent upon protein intake, hydration state, and tubular reabsorption as already observed by Van Slyke et al<sup>4</sup> Cystatin C side-steps these pitfalls. Direct comparisons of cystatin C- and creatinine-based prediction equations for eGFR, compared to a gold standard, have been made.<sup>12</sup> In

those studies, S-Cys C-based prediction equations appeared to be more precise than those of S-Cr for those patients with measured GFR > 60 mL/min/1.73 m<sup>2</sup> and could therefore be of benefit in the earlier detection of renal impairment in certain subpopulations.

But is cystatin C better than creatinine (Figure 3B-C)? Certainly not in cost that favors creatinine over cystatin C by a factor of 10 to 1. A direct comparison between cystatin C and creatinine has been published.<sup>9</sup> Conceivably, in patients with reduced muscle mass because of amputations or in those with degenerative muscle disease, cystatin C might provide more accurate information compared to serum creatinine. Cystatin C may also play a role in assessing renal function in

children or in the massively obese. However, as a biomarker, the idea that cystatin C beats creatinine (or urea for that matter) is difficult to defend. Finally, our clinical laboratory reports creatinine values within 20 minutes. Cystatin C levels (Figure 2C) require much more time.

### 3.3 | Glomerular filtration rate estimation at the bedside with a visible fluorescent injectate

Rizk et al developed a novel method for rapid bedside GFR measurements that beats creatinine and cystatin C.<sup>13</sup> Simultaneously, the authors estimated effective plasma volume. The markers consist of a rhodamine derivative and small 5-kD fluorescein carboxymethylated dextrans. After a single intravenous injection, both GFR and plasma volume are determined on the basis of the plasma pharmacokinetics of the rhodamine derivative and the fluorescein carboxymethylated dextrans, respectively. The authors relied on iohexolmeasured GFR as the gold standard and achieved a correlation with visible fluorescent injectate GFR  $R^2 = .99$ . The blood requirement was 1.5 mL and the time-frame 3 hours. The added value here is the simultaneous determination of plasma volume, a value of substantial therapeutic importance. Whether or not this method should be employed as a screen in those at high risk or used when simpler biomarkers are suggestive of AKI remains to be determined. In any event, in intensive care units such a technique would clearly be more valuable than eGFR.

### 3.4 | Markers that precede creatinine increases

The idea is that the kidneys react to stress or damage by releasing detectable products into the urine or plasma. Since so many mechanisms in the kidneys could be influenced, the candidates to be examined are many. The presence of many candidates does not necessarily translate into better diagnostic strategies. But it does result in far more work. A schematic of candidates, tested or hypothetical (Figure 3), is formidable.

Numerous molecules have been identified as potential markers for early AKI detection before creatinine increases can be verified. An early candidate was N-acetyl-beta-D-glucosaminidase (NAG). N-acetyl-beta-D-glucosaminidase is a hydrolytic lysosomal enzyme that is present in high concentrations in proximal tubular cell lysosomes. The NAG isoenzyme-B is associated to the lysosomal membrane and excreted in urine during tubular damage. Because of its stability in urine, its relatively large molecular mass which precludes filtration by the glomerulus and its presence in high activity in the tubular lysosomes, elevation of urinary NAG

activity has been taken as a marker for renal proximal tubular damage or more precisely, loss of lysosomal integrity. Unfortunately, the threshold for release of tubular enzymes in response to injury may not lead to clinically apparent AKI is quite low.<sup>14</sup> Therefore, urinary NAG has high sensitivity but low specificity for AKI.

### 3.5 | Nephrocheck®

Tissue inhibitor of metalloproteinases-2 and insulin-like growth factor binding protein-7 (IGFBP7) reflect cell-cycle arrest, a phenomenon occurring in proximal tubular cells under stress. Tissue inhibitor of metalloproteinases-2 and IGFBP7 have been incorporated and commercialized (Astute Medical) as a diagnostic test (Nephrocheck). The test gives results within 20 minutes and the markers peak at 6-24 hours. Nephrocheck has been assessed in two single-center trials, leading to Food-and-Drug Administration approval. Meersch et al randomized Nephrocheck-positive patients after cardiac surgery to receive specialized care including fluid management and the titration of vasoactive medications. The authors reported a reduction in established AKI.<sup>15</sup> A similar care bundle was given to patients undergoing non-cardiac major surgery after testing positive for the biomarkers.<sup>16</sup> In that study, the rates of moderate and severe AKI were significantly reduced with the intervention. The sample sizes in these studies were small. The need for renal replacement therapy, and mortality were not reduced. The patients in both studies were at high risk. Nonetheless, the investigators were intrepid by simultaneously testing an intervention.

### 3.6 | Kidney injury marker-1

Kidney injury marker-1 (KIM-1) is a type 1 transmembrane protein, with an immunoglobulin and mucin domain that is markedly up-regulated in the proximal tubule in the post-ischemic rat kidney. Kidney injury marker-1 is an apoptotic-cell phagocytosis and scavenger receptor that is most highly upregulated in proximal tubular epithelium in acute and chronic kidney injury.<sup>17</sup> The ectodomain of KIM-1 is shed from cells. Han et al conducted studies to evaluate whether or not KIM-1 is present in human AKI and might serve as a urinary marker of acute renal tubular injury.<sup>18</sup> They reported a soluble form KIM-1 in the urine of AKI patients. Since that report, the utility of KIM-1 in predicting AKI has been avidly pursued. KIM-1 has been most convincingly utilized to identify AKI in the course of drug therapies closely associated with AKI, such as cisplatin-induced nephrotoxicity. Urinary KIM-1 levels are elevated in cisplatin induced AKI and may help in the differential diagnosis of proximal epithelial-cell injuries.<sup>19</sup>

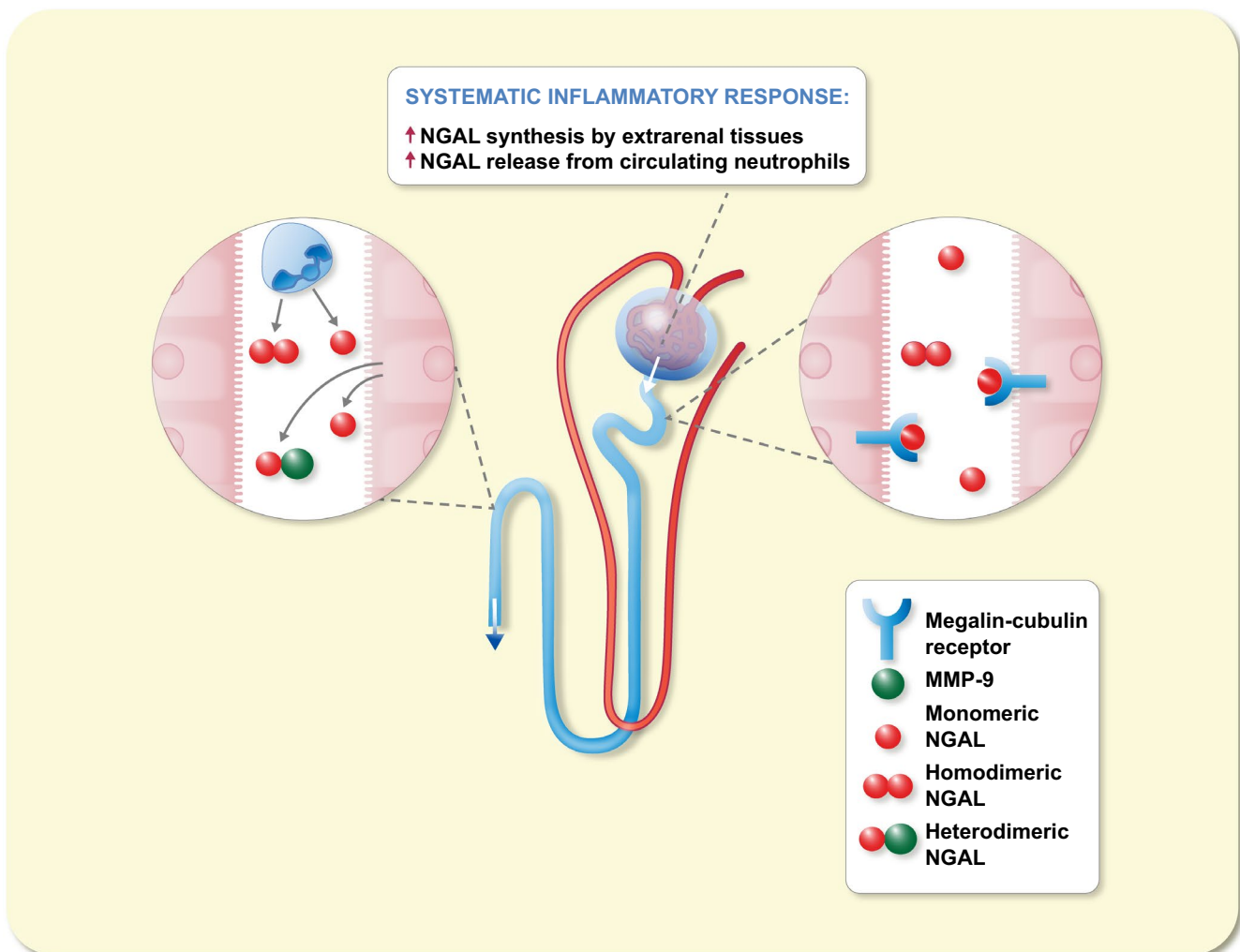
### 3.7 | Neutrophil gelatinase associated lipocalin

Neutrophil gelatinase associated lipocalin (NGAL) is a member of the lipocalin superfamily, 24p3, which induces the formation of renal epithelia.<sup>20</sup> Neutrophil gelatinase associated lipocalin acts as a growth and differentiation factor in multiple cell types, including developing and mature renal epithelia, and some of this activity is enhanced in the presence of siderophore-iron complexes.<sup>21</sup> The molecule is responsible for iron traffic within renal epithelia.<sup>22</sup> Mishra et al used a transcriptome-wide interrogation strategy to identify renal genes that are induced very early after renal ischemia, whose protein products might serve as novel biomarkers for AKI.<sup>23</sup> Neutrophil gelatinase associated lipocalin proved the most convincing. Since that time, NGAL has been a serious contender as a utilitarian biomarker for AKI that indeed

supersedes creatinine. Nevertheless, weaknesses have been exposed and doubts as to NGAL's utility have been expressed (Figure 4).<sup>24</sup> Neutrophil gelatinase associated lipocalin levels not only increase unpredictably during evolving AKI, but also during other chronic and acute inflammatory conditions frequently encountered in intensive care units. Such conditions include sepsis, recent coronary bypass surgery and acute exacerbations of obstructive pulmonary diseases.

### 3.8 | Liver-type fatty acid binding protein

Liver-type fatty acid binding protein (L-FABP) is expressed in human proximal tubules and has an endogenous anti-oxidative function. Liver-type fatty acid binding protein binds fatty acids and binds them to mitochondria or peroxisomes, where the fatty acids then undergo beta oxidation.



**FIGURE 4** Many studies suggest that neutrophil gelatinase associated lipocalin (NGAL) levels in urine or plasma can be regarded as a biomarker for acute kidney injury (AKI). Under normal conditions, NGAL levels are relatively low in urine and plasma. However, NGAL levels in AKI patients increase rapidly from basal levels to quickly reach diagnostic levels. However, NGAL has numerous sources, several interacting partners, and relies on megalin for urinary clearance. The complexity is illustrated by the fact that urinary NGAL levels may also predict the progression of chronic kidney disease (CKD) (adapted from Martenson and Bellamo.<sup>24</sup>)

Liver-type fatty acid binding protein is expressed not only in the liver, but also in the intestine, pancreas, stomach, lung and kidney.<sup>25</sup> Liver-type fatty acid binding protein has been studied as a biomarker (ischemia-reperfusion, contrast-induced AKI, transplantation), as well as a potential ameliorating agent. For instance, Matsui et al investigated aristolochic-acid (Balkan nephropathy) nephrotoxicity.<sup>26</sup> Since mice do not express L-FABP in kidney, the authors constructed a transgenic mouse that does so (hl-FABP). Administration of aristolochic acid increased hl-FABP. These mice were protected from Balkan nephropathy compared to wild-type controls without hl-FABP. The novelty here is identifying a biomarker that also harbors a possible therapeutic potential.

### 3.9 | Proenkefalin

Enkephalins are opioid peptides that are found at high levels in the brain and endocrine tissues. Studies have shown that enkephalins play an important role in behavior, pain, cardiac function, cellular growth, immunity and ischemic tolerance. Proenkefalin (PENK) is an endogenous opioid polypeptide hormone, which via proteolytic cleavage, produces the enkephalin peptides [met]-enkephalin, and to a lesser extent, [leu]-enkephalin. Proenkefalin is expressed in many tissues including the kidney.<sup>27</sup> Beunders et al have proposed PENK as a novel biomarker for renal function.<sup>28</sup> Proenkefalin plasma levels showed promise and were highly correlated with iohexol clearance. An influence of PENK on outcome was suggested by the authors but not documented.

### 3.10 | Urinary chemokine (C-C motif) ligand 2 (monocyte chemotactic protein-1)

Chemokine (C-C motif) ligand 2 (CCL2) is a chemotactic cytokine that recruits monocytes, releases growth factors and promotes adhesion in vascular endothelium. The CCL2 molecule also recruits memory T cells, and dendritic cells to the sites of inflammation produced by either tissue injury or infection. Elevated serum and urinary CCL2 levels and expression of its receptor (CCR2) have been associated with tumorigenesis in human urinary-tract malignancies. The molecule is upregulated in ischemia-reperfusion injury. Moledina et al measured preoperative and postoperative plasma MCP-1 levels in adults undergoing cardiac operations to evaluate the association of perioperative MCP-1 levels with AKI and death. Translational Research Investigating Biomarker Endpoints in AKI was a prospective, multicenter, observational cohort study.<sup>29</sup> The authors reported that higher plasma MCP-1 were associated with increased AKI and risk of death

after cardiac operations. They suggest that MCP-1 could be used as a biomarker to identify high-risk patients for potential AKI prevention strategies in the setting of cardiac operations.

### 3.11 | Dickkopf-3

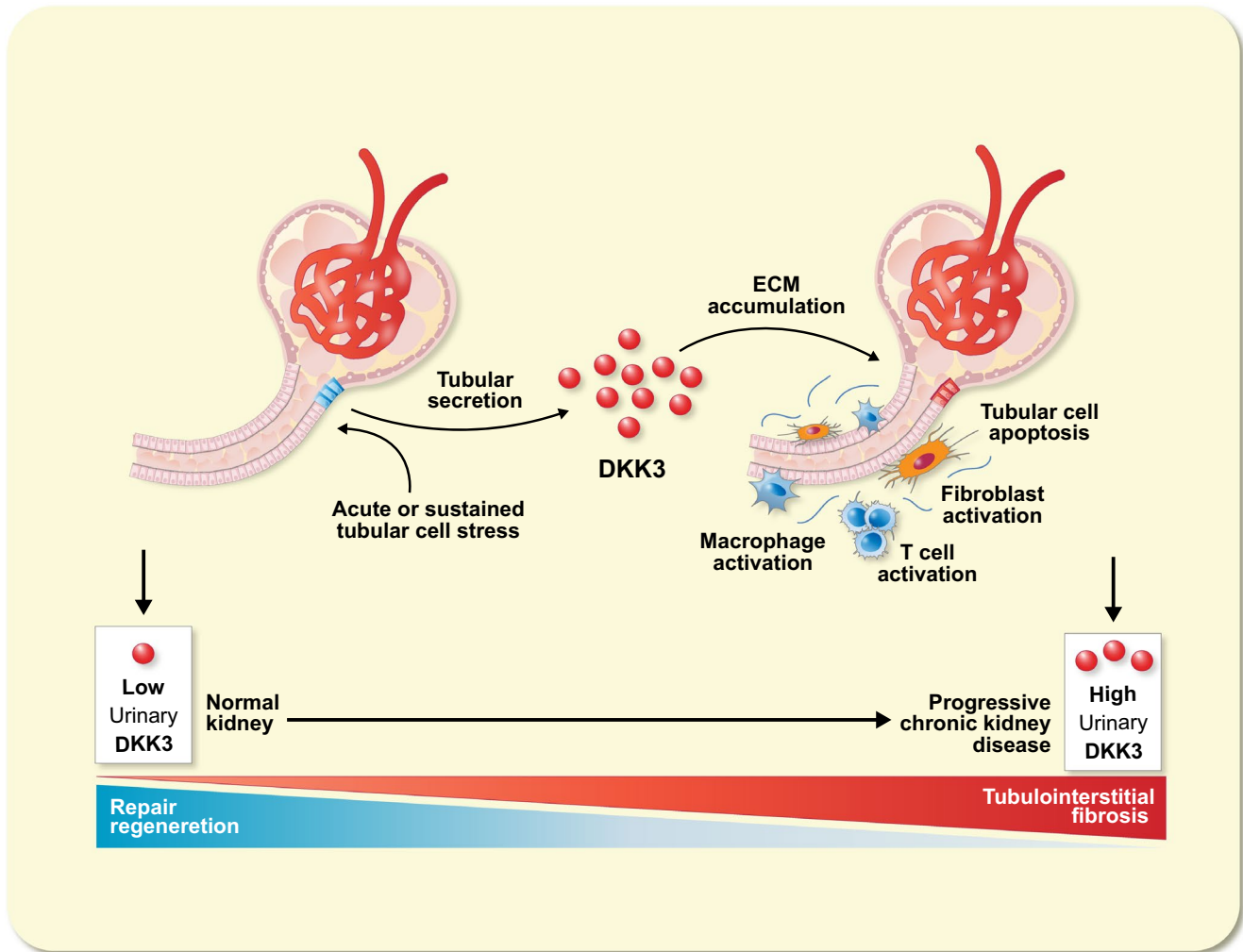
The *dickkopf* (German fathead) *Dkk* gene family encodes secreted glycoproteins represented as four main members in vertebrates.<sup>30</sup> The hallmark of the *Dkk1/2/4* family is their ability to modulate Wnt signaling. Wnts, in turn, are an evolutionarily conserved family of growth factors, whose signaling is involved in numerous processes in development, organism maintenance, and disease. In the adult, DKKs are implicated in bone formation and bone disease, cancer, Alzheimer's disease and now also AKI.

Zewinger et al hypothesized that dickkopf-3 (DKK-3) might reflect stress-induced renal tubular epithelia and that the glycoprotein could provide information regarding the propensity of ongoing tubulo-interstitial disease and short-term eGFR loss.<sup>31</sup> Thus, they actually investigated AKD rather than AKI. First, they observed that DKK-3-to-creatinine concentrations at baseline were higher in CKD patients than controls, supporting the idea that DKK-3 is produced in greater amounts in these patients. Furthermore, DKK-3 predicted the subsequent steepness in decline of eGFR in the patients. Thus, DKK-3 appeared to be a biomarker of persons particularly at risk for a rapidly declining GFR.

In a subsequent article, the group investigated any association between DKK-3, AKI, and subsequent renal functional decline in persons undergoing cardiac surgery.<sup>32</sup> The initial observational study from Saarland University included patients who had cardiac surgery forming a derivational cohort. Thereafter, the investigators studied patients who underwent cardiac surgery at the Cleveland Clinic (RenalRIP trial) forming a validation cohort. The authors found that compared to clinical and other laboratory measurements, urinary concentrations of DKK-3-to-creatinine determinations significantly improved AKI prediction in both cohorts. High urinary DKK-3-to-creatinine concentrations were independently associated with significantly lower renal function at hospital discharge and reduced GFR after a median follow-up of 820 days. The authors concluded that preoperative urinary DKK-3 is an independent predictor of subsequent AKI risk and a further loss of renal function. Thus, the biomarker could predict AKI before any initiating event, a feature that is unique compared to other markers.

In experimental CKD models, DKK-3 promoted renal tubulointerstitial fibrosis through modulation of the canonical Wnt/catenin signaling pathway.<sup>33</sup> In clinical studies (above), increased urinary dickkopf-3 (DKK3) levels identified patients at high risk for short-term CKD progression, regardless of the cause of kidney disease, baseline renal function and





**FIGURE 5** Urinary dickkopf-3 (DKK3) is a biomarker of ongoing renal tubular cell injury, ie a renal tubular cell “stress” indicator within the “kidney injury continuum.” ECM, extracellular matrix (adapted from Schunk et al<sup>34</sup>)

albuminuria. A schematic of DKK-3 and kidney is shown in (Figure 5).<sup>34</sup>

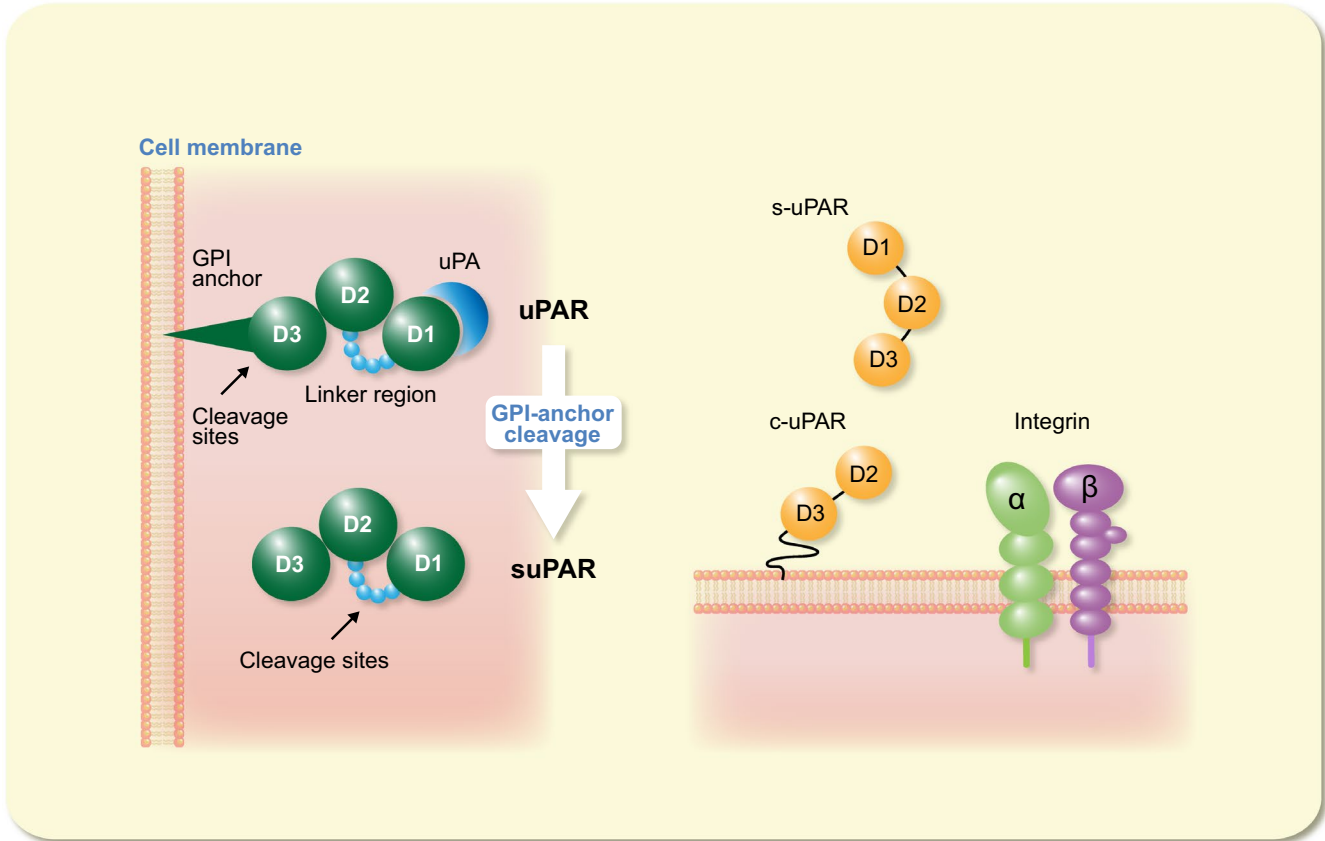
### 3.12 | Soluble urokinase plasminogen activator receptor

Urokinase, also known as urokinase-type plasminogen activator (uPA) is a serine protease originally isolated from urine, but also present in blood and extracellular matrix. The primary substrate is plasminogen, which when cleaved to plasmin triggers a proteolytic cascade that participates in thrombolysis and/or extracellular matrix degradation. The urokinase receptor (CD87 or urokinase plasminogen activator receptor [uPAR]) is a multidomain glycoprotein, tethered to cell membranes via a glycosylphosphatidylinositol (GPI) anchor. The uPAR interacts with several other proteins, including vitronectin, the uPAR-associated protein (uPARAP), and the integrin family of membrane proteins. When uPA is bound to the receptor, there is cleavage

between the GPI-anchor and the uPAR, releasing soluble receptor (suPAR). The circulating suPAR is a marker of renal disease severity and aggressiveness and has become a biomarker for activation of the inflammatory and immune systems (Figure 6).<sup>35</sup>

The investigators have shown earlier that circulating suPAR is involved in the pathogenesis of focal and segmental glomerulosclerosis and likely acts on podocytes by activating the  $\alpha\text{v}\beta 3$  integrin on the cell surface.<sup>36</sup> The group has also shown that the apolipoprotein L1 gene variants present in African Americans are dependent on plasma suPAR levels.<sup>37</sup> APOL1 G1 or G2 genotypes augment  $\alpha\text{v}\beta 3$  integrin activation and causes proteinuria in mice in a suPAR-dependent manner. The synergy suPAR and APOL1 G1 or G2 variants on  $\alpha\text{v}\beta 3$  integrin activation is a mechanism for CKD.

In a recent tour-de-force, the group showed that suPAR is a marker for, and may be involved in the pathogenesis of, AKI.<sup>38</sup> The investigators measured plasma levels of suPAR pre-procedurally in patients who underwent coronary angiography (exploratory cohort) and patients who underwent



**FIGURE 6** A, Schematic of the structure of urokinase plasminogen activator receptor (uPAR), the mechanism of cleavage and the formation of soluble uPAR (suPAR). D1, D2, and D3 represent the three homologous domains of suPAR. B, The suPAR molecule binds to  $\alpha\beta$  integrin. In a human proximal tubular cell line, suPAR had profound effects on mitochondrial respiration and resulted in superoxide production (adapted from Hayek et al<sup>37</sup>)

cardiac surgery (confirmatory cohort) and at the time of admission to the intensive care unit in critically ill patients. Pre-procedural high suPAR levels were associated with AKI in the clinical studies, similar to the report involving DKK-3. This state-of-affairs was consistent across a variety of clinical subgroups. The data were underscored with a transgenic suPAR over-expressing mouse model that was subjected to iodinated contrast material. An anti-suPAR antibody ameliorated the effects. The suPAR molecule, binding to  $\alpha\beta$  integrin in a cell system, generated superoxide. The suPAR-treated cells also had a higher rate of non-mitochondrial oxygen consumption, indicating an active involvement of other cellular oxygen-consuming reactions in addition to that catalyzed by the mitochondrial cytochrome C oxidase.

### 3.13 | A prospective study to identify biomarkers (RUBY)

A multi-center international prospective observational study to identify biomarkers of the persistence of stage 3 AKI as defined by the KDIGO criteria would appear highly desirable. The

RUBY (not an eponym) was such an investigation. Patients in the intensive care unit (ICU) with moderate or severe AKI (KDIGO stage 2 or 3) were enrolled.<sup>39</sup> A total of 336 patients could be analyzed. The authors selected potential candidate biomarkers from proteins associated with apoptosis, necrosis, endothelial injury, cell-cell and cell-matrix adhesion, cytoprotection, oxidative processes, cell-cycle regulation, inflammation, tubular injury, immune function and fibrosis for biologic plausibility. Urinary C-C motif chemokine ligand 14 (CCL14) was the most predictive of persistent stage 3 AKI with an area under the receiver operating characteristic curve of 0.95. As a matter of fact, CCL14 beat CH13L1, plasma cystatin C, plasma proenkephalin, urinary NGAL and urinary L-FABP.

C-C motif chemokine ligand 14 is a member of the chemokine family of small molecules that were initially recognized for roles in leukocyte chemotaxis and are implicated in tissue injury and repair processes. C-C motif chemokine ligand 14 (HCC-1) belongs to the CC chemokine family. CCL14 activates monocytes but does not induce chemotaxis. Could CCL14 be a mediator of AKI and non-recovery? A possibility might be that inflammatory (such as tumor necrosis factor- $\alpha$  and others) signals from injured tubules, release CCL14. Such a state-of-affairs could promote further Th1 inflammatory signals.

## 4 | WHITHER TO NOW?

If one's own knowledge is not enough, perhaps artificial intelligence could help.<sup>40</sup> A retrospective cohort study was conducted in medical, surgical and mixed ICUs at Mayo Clinic in Rochester, Minnesota. The investigators stated their primary objective as predicting AKI using extant clinical data following ICU admission. They incorporated known AKI risk factors and routinely measured vital characteristics and laboratory results. The model achieved an AUC of 0.88 on validation. The results suggest a sensitivity of 92%, a specificity of 68% and detected 30% of AKI cases at least 6 hours before the standard time criteria (AKI stages 1-3). For discrimination of AKI stages 2-3, the model had 91% sensitivity, 71% specificity and 53% detection of AKI cases at least 6 hours before AKI onset. The idea here is to apply a self-improvable modifiable algorithm to improve AKI diagnoses. Such algorithms could incorporate all biomarkers known to date.

This idea has been carried much further. Tomasev et al developed a deep learning approach for the continuous risk prediction of future AKI deterioration in patients.<sup>41</sup> They built their AKI model on recent work that incorporates adverse events from electronic health records. Their model was developed on a large, longitudinal, dataset of electronic health records (US Veterans Administration Electronic Health Records) that covers diverse clinical environments, comprising 703,782 adult patients across 172 inpatient locations and 1,062 outpatient sites. The model predicted 56% of all inpatient episodes AKI, and 90% of all AKI episodes that required subsequent administration of dialysis, with a lead time of up to 48 h and a ratio of 2 false alerts for every true alert. All of this remarkable result was without any of the biomarkers mentioned here.

## 5 | CONCLUSIONS

The “elephant-in-the-room” question is: “Does this biomarker research improve outcomes?” The answer is, “it might!” Research from future prospective clinical studies should help us further. Investigators must settle upon a “gold-standard” test and then compare the new candidates in terms of performance with the Bland-Altman plot statistic. Improved phenotyping of the patients is mandatory, which requires a utilitarian electronic medical records system. Particularly exciting are putative biomarkers that have direct therapeutic implications.

Prospective studies such as the RUBY study are mandatory.<sup>39</sup> Haase-Fielitz and colleagues recently tested the notion that drawing attention to AKI might improve care.<sup>42</sup> Hospitalized patients with increasing creatinine values meeting KDIGO guidelines for AKI were randomized into those

identified with an early warning computerized message recommending a nephrology consult and supplied with an AKI identifier or to usual care. The nephrologists confirmed the diagnosis, made medication recommendations (usually to discontinue), optimized circulating fluid volume, and arranged for follow-up. Compared to usual care, AKI complications were reduced, diagnoses were more commonly established, and potentially deleterious medications discontinued. This study defines how creatinine (the gold standard) stacks up. Now, the investigators are in a position to test other markers against this standard in a prospective fashion. In that way, robust statistics can be applied and the markers tested against creatinine.

### ACKNOWLEDGEMENT

The author received no funding.

### CONFLICTS OF INTEREST

None.

### ORCID

Friedrich C. Luft  <https://orcid.org/0000-0002-8635-1199>

### REFERENCES

- Ronco C, Bellomo R, Kellum JA. Acute kidney injury. *Lancet*. 2019;394:1949-1964.
- Cameron JS. Milk or albumin? The history of proteinuria before Richard Bright. *Nephrol Dial Transplant*. 2003;18:1281-1285.
- Dunea G, Freedman P. The nonprotein nitrogen level of the blood in renal disease. *JAMA*. 1968;203:1125-1126.
- Van Slyke DD, McIntosh JF, Möller E, Hannon RR, Johnston C. Studies of urea excretion: VI. Comparison of the blood urea clearance with certain other measures of renal function. *J Clin Invest*. 1930;8:357-374.
- Rehberg PB. Studies on kidney function: the rate of filtration and reabsorption in the human kidney. *Biochem J*. 1926;20:447-460.
- Diskin CJ. Creatinine and glomerular filtration rate: evolution of an accommodation. *Ann Clin Biochem*. 2007;44:16-19.
- Smith HW. Note on the interpretation of clearance methods in the diseased kidney. *J Clin Invest*. 1941;20:631-635.
- Soveri I, Berg UB, Björk J, et al. Measuring GFR: a systematic review. *Am J Kidney Dis*. 2014;64(3):411-424.
- Porrini E, Ruggenenti P, Luis-Lima S, et al. Estimated GFR: time for a critical appraisal. *Nat Rev Nephrol*. 2019;15:177-190.
- Randers E, Erlandsen EJ. Serum cystatin C as an endogenous marker of the renal function – A review. *Clin Chem Lab Med*. 1999;37:389-395.
- Jensen D, Kierulf-Lassen C, Kristensen MLV, et al. Megalin dependent urinary cystatin C excretion in ischemic kidney injury in rats. *PLoS ONE*. 2017;12(6):e0178796
- van Deventer HE, Paiker JE, Katz IJ, George JA. A comparison of cystatin C- and creatinine-based prediction equations for the estimation of glomerular filtration rate in black South Africans. *Nephrol Dial Transplant*. 2011;26:1553-1558.
- Rizk DV, Meier D, Sandoval RM, et al. A novel method for rapid bedside measurement of GFR. *J Am Soc Nephrol*. 2018;29:1609-1613.

14. Westhuyzen J, Endre ZH, Reece G, Reith DM, Saltissi D, Morgan TJ. Measurement of tubular enzymuria facilitates early detection of acute renal impairment in the intensive care unit. *Nephrol Dial Transplant*. 2003;18:543-551.
15. Meersch M, Schmidt C, Hoffmeier A, et al. Prevention of cardiac surgery-associated AKI by implementing the KDIGO guidelines in high risk patients identified by biomarkers: the PrevAKI randomized controlled trial. *Intensive Care Med*. 2017;43:1551-1561.
16. Gocze I, Jauch D, Gotz M, et al. Biomarker-guided intervention to prevent acute kidney injury after major surgery: the prospective randomized BigpAK study. *Ann Surg*. 2018;267:1013-1020.
17. Ichimura T, Brooks CR, Bonventre JV. Kim-1/Tim-1 and immune cells: shifting sands. *Kidney Int*. 2012;81:809-811.
18. Han WK, Bailly V, Abichandani R, Thadhani R, Bonventre JV. Kidney injury molecule-1 (KIM-1): a novel biomarker for human renal proximal tubule injury. *Kidney Int*. 2002;62:237-244.
19. Tanase DM, Gosav EM, Radu S, et al. The predictive role of the biomarker kidney molecule-I (KIM-1) in acute kidney injury (AKI) cisplatin-induced nephrotoxicity. *Int J Mol Sci*. 2019;20. <https://doi.org/10.3390/ijms20205238>
20. Yang J, Mori K, Li JY, Barasch J. Iron, lipocalin, and kidney epithelia. *Am J Physiol Renal Physiol*. 2003;285:F9-F18.
21. Schmidt-Ott KM, Mori K, Li JY, et al. Dual action of neutrophil gelatinase-associated lipocalin. *J Am Soc Nephrol*. 2007;18:407-413.
22. Schmidt-Ott KM, Mori K, Kalandadze A, et al. Neutrophil gelatinase-associated lipocalin-mediated iron traffic in kidney epithelia. *Curr Opin Nephrol Hypertens*. 2006;15:442-449.
23. Mishra J, Ma Q, Prada A, et al. Identification of neutrophil gelatinase-associated lipocalin as a novel early urinary biomarker for ischemic renal injury. *J Am Soc Nephrol*. 2003;14:2534-2543.
24. Martensson J, Bellomo R. The rise and fall of NGAL in acute kidney injury. *Blood Purif*. 2014;37:304-310.
25. Xu Y, Xie Y, Shao X, Ni Z, Mou S. L-FABP: A novel biomarker of kidney disease. *Clin Chim Acta*. 2015;445:85-90.
26. Matsui K, Kamijo-Ikemori A, Sugaya T, Yasuda T, Kimura K. Renal liver-type fatty acid binding protein (L-FABP) attenuates acute kidney injury in aristolochic acid nephrotoxicity. *Am J Pathol*. 2011;178:1021-1032.
27. Denning GM, Ackermann LW, Barna TJ, et al. Proenkephalin expression and enkephalin release are widely observed in non-neuronal tissues. *Peptides*. 2008;29:83-92.
28. Beunders R, van Groenendaal R, Leijte G, Kox M, Pickkers P. Proenkephalin compared to conventional methods to assess kidney function in critically ill sepsis patients. *Shock*. 2020. <https://doi.org/10.1097/SHK.0000000000001510>
29. Moledina DG, Isguven S, McArthur E, et al. Translational research investigating biomarker endpoints in acute kidney injury C: plasma monocyte chemoattractant protein-1 is associated with acute kidney injury and death after cardiac operations. *Ann Thorac Surg*. 2017;104:613-620.
30. Niehrs C. Function and biological roles of the Dickkopf family of Wnt modulators. *Oncogene*. 2006;25:7469-7481.
31. Zewinger S, Rauen T, Rudnicki M, et al. Dickkopf-3 (DKK3) in urine identifies patients with short-term risk of eGFR loss. *J Am Soc Nephrol*. 2018;29:2722-2733.
32. Schunk SJ, Zarbock A, Meersch M, et al. Association between urinary dickkopf-3, acute kidney injury, and subsequent loss of kidney function in patients undergoing cardiac surgery: an observational cohort study. *Lancet*. 2019;394:488-496.
33. Grone EF, Federico G, Nelson PJ, Arnold B, Grone HJ. The homeostatic functions of Wnt pathways in tubular injury. *Pflugers Arch*. 2017;469:899-906.
34. Schunk SJ, Speer T, Petrakis I, Fliser D. Dickkopf 3—a novel biomarker of the 'kidney injury continuum'. *Nephrol Dial Transplant*. 2020. <https://doi.org/10.1093/ndt/gfaa003>
35. Eugen-Olsen J, Andersen O, Linneberg A, et al. Circulating soluble urokinase plasminogen activator receptor predicts cancer, cardiovascular disease, diabetes and mortality in the general population. *J Intern Med*. 2010;268:296-308.
36. Zeier M, Reiser J. suPAR and chronic kidney disease—a podocyte story. *Pflugers Arch*. 2017;469:1017-1020.
37. Hayek SS, Koh KH, Grams ME, et al. A tripartite complex of suPAR, APOL1 risk variants and alpha5beta3 integrin on podocytes mediates chronic kidney disease. *Nat Med*. 2017;23:945-953.
38. Hayek SS, Leaf DE, Samman Tahhan A, et al. Soluble urokinase receptor and acute kidney injury. *N Engl J Med*. 2020;382:416-426.
39. Hoste E, Bihorac A, Al-Khafaji A, et al. Identification and validation of biomarkers of persistent acute kidney injury: the RUBY study. *Intensive Care Med*. 2020. <https://doi.org/10.1007/s00134-019-05919-0>
40. Chiofalo C, Chbat N, Ghosh E, Eshelman L, Kashani K. Automated continuous acute kidney injury prediction and surveillance: a random forest model. *Mayo Clin Proc*. 2019;94:783-792.
41. Tomasev N, Glorot X, Rae JW, et al. A clinically applicable approach to continuous prediction of future acute kidney injury. *Nature*. 2019;572:116-119.
42. Haase-Fielitz A, Elitok S, Schostak M, et al. Impact of intensified care compared to usual care in patients with acute kidney injury: an exploratory randomized controlled trial. *Dt. Ärzteblatt*. 2020; in press.

**How to cite this article:** Luft FC. Biomarkers and predicting acute kidney injury. *Acta Physiol*. 2021;231:e13479. <https://doi.org/10.1111/apha.13479>