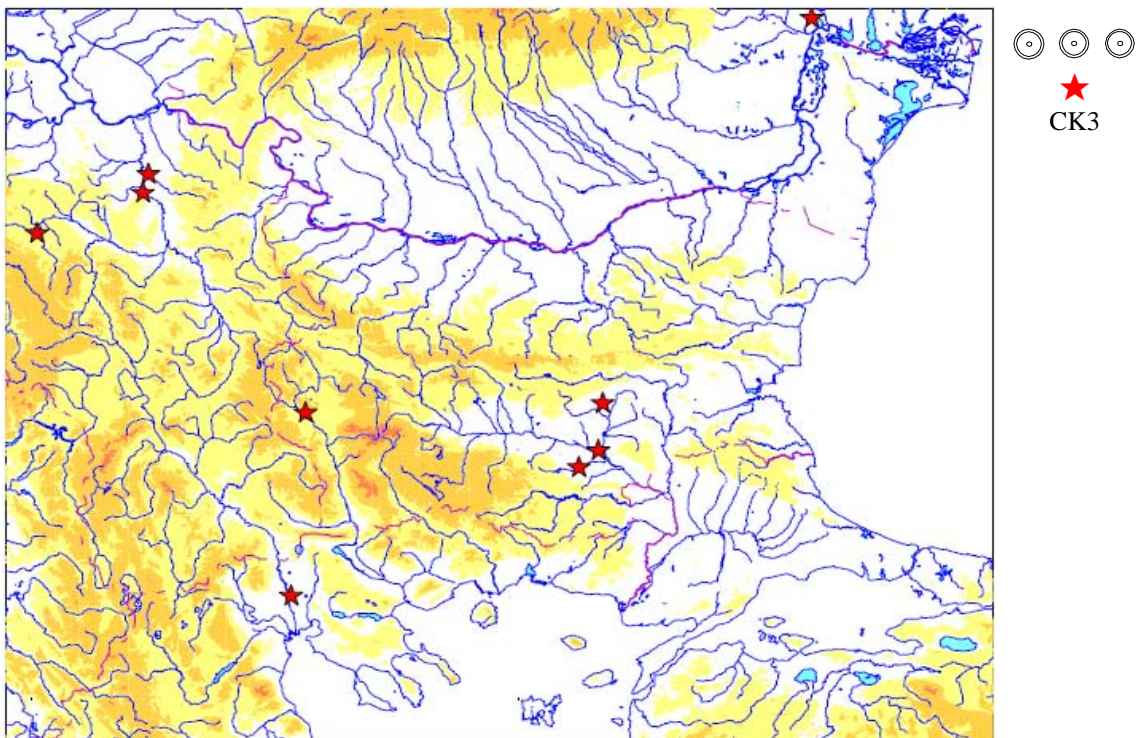
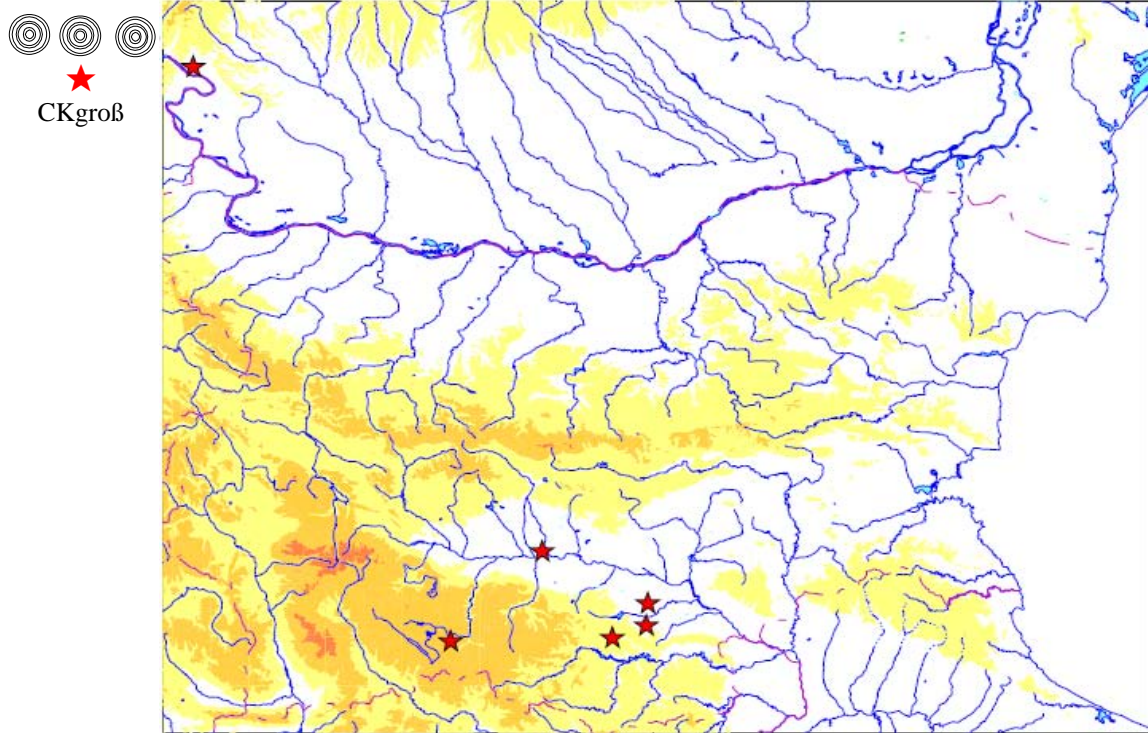


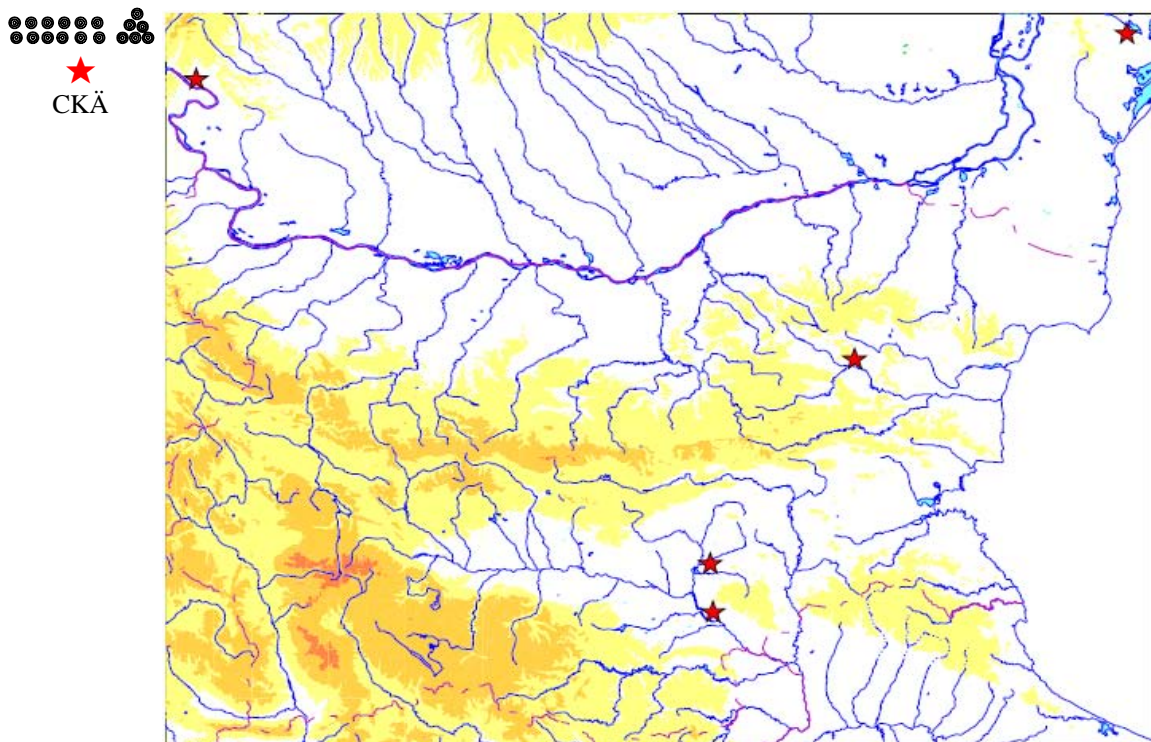
Karte 1: Mehrringige Kreisaugenstempel (CK1).



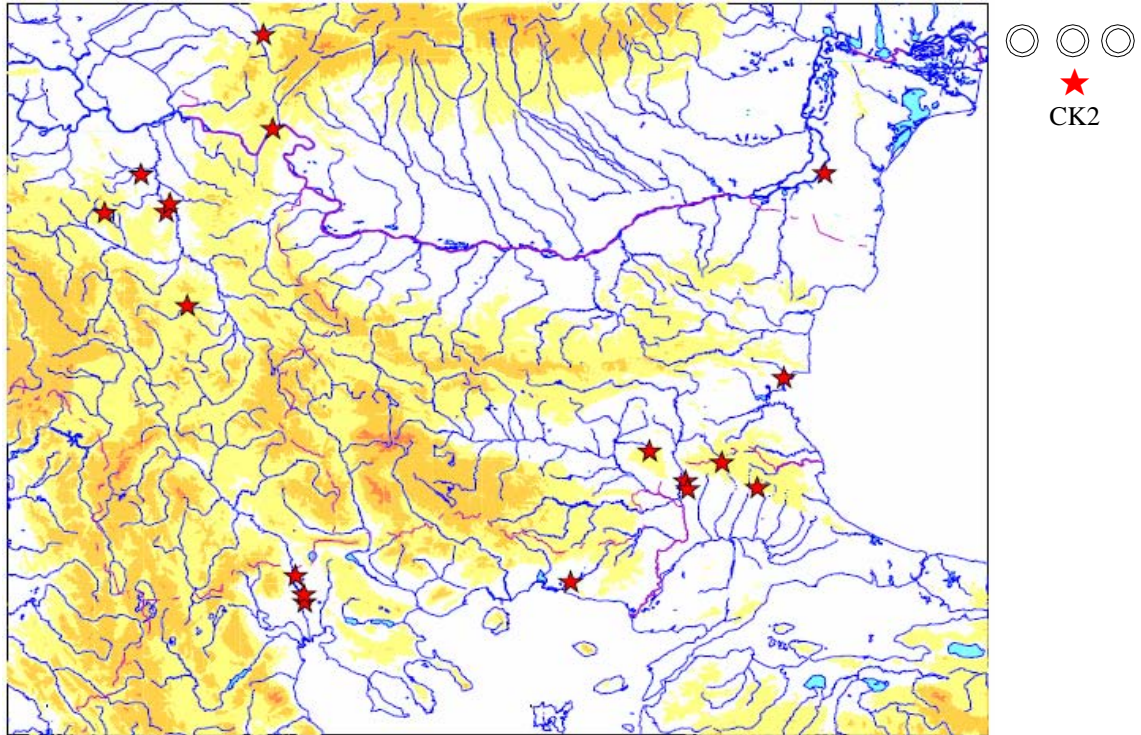
Karte 2: Einfache Kreisaugenstempel mit Punkt (CK3).



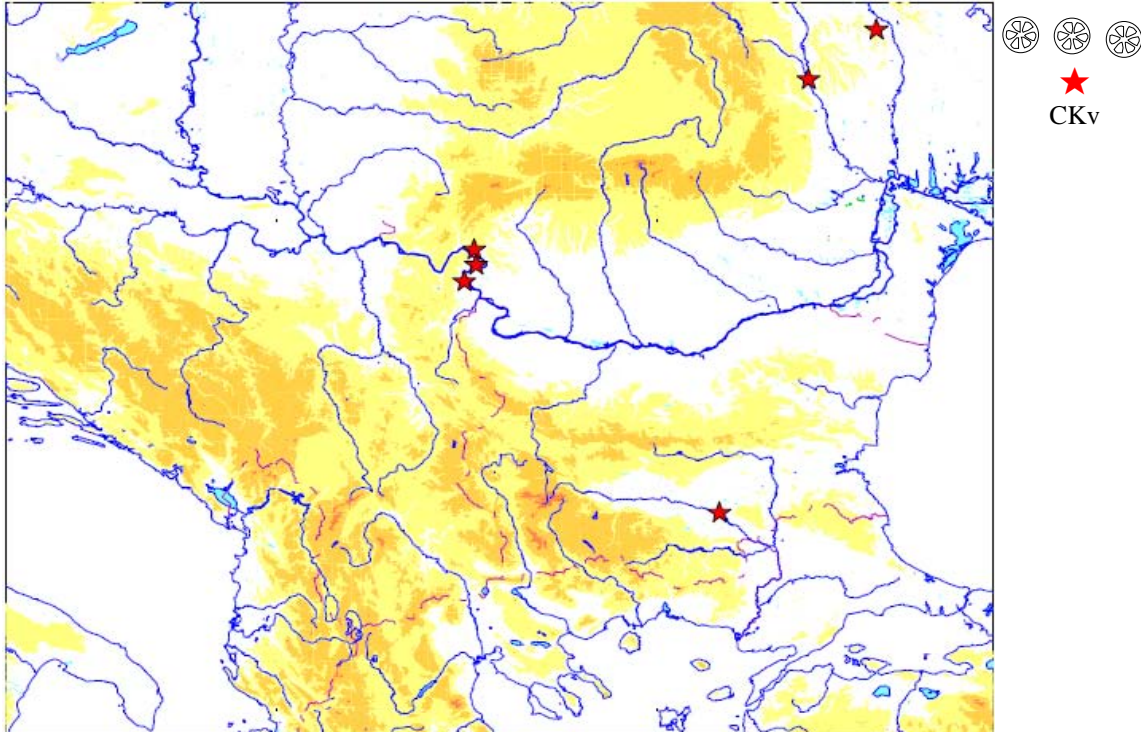
Karte 3: Große Kreisaugenstempel (CKgroß).



Karte 4: Größere von Kreisaugenstempeln bedeckte Flächen (CKÄ).

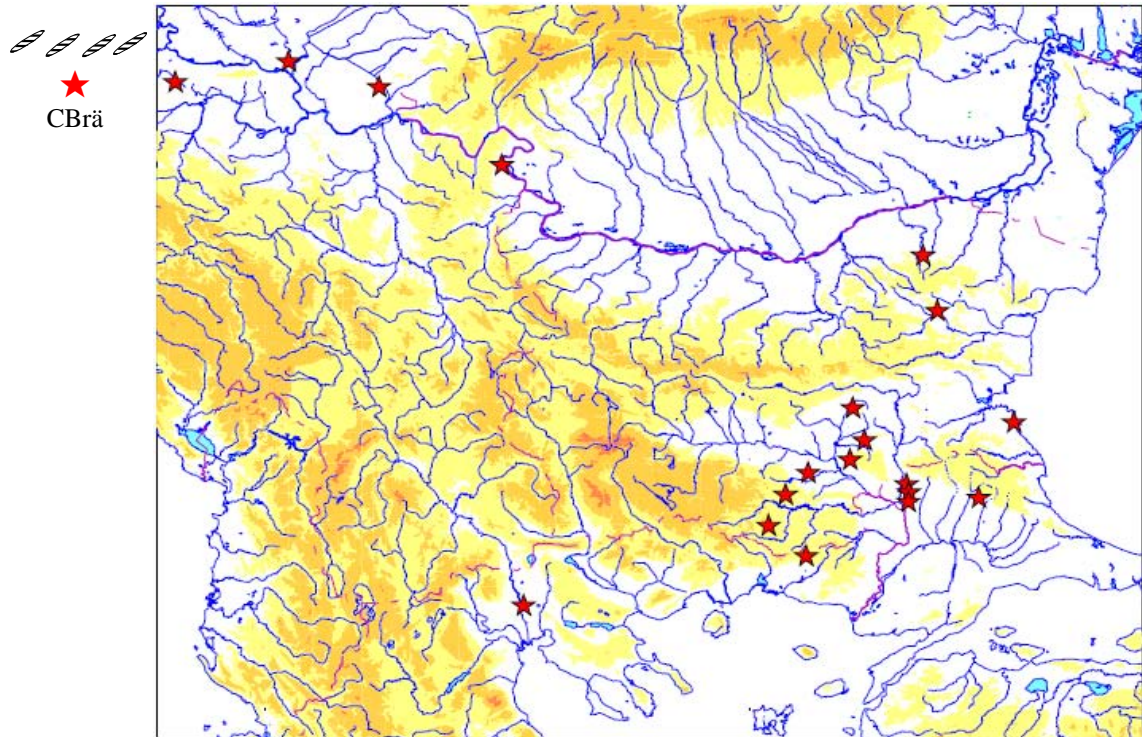


Karte 5: Einfache Kreisaugenstempel (CK2).

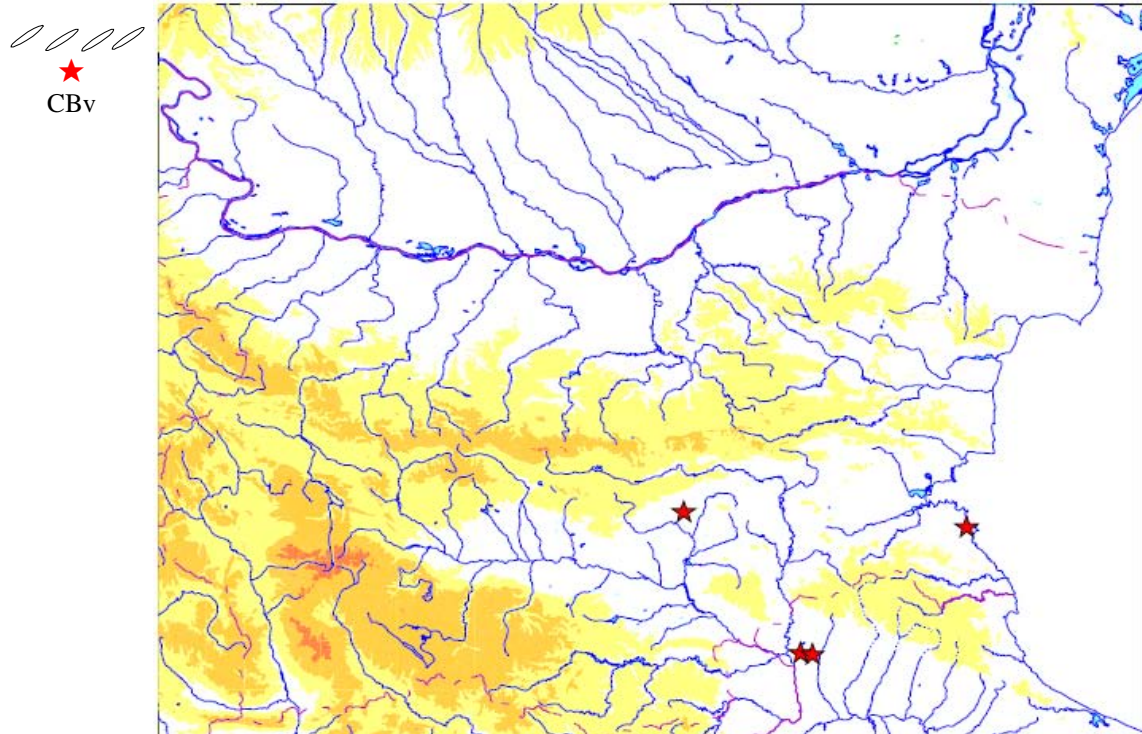


Karte 6: blütenförmige Stempel (CKv).

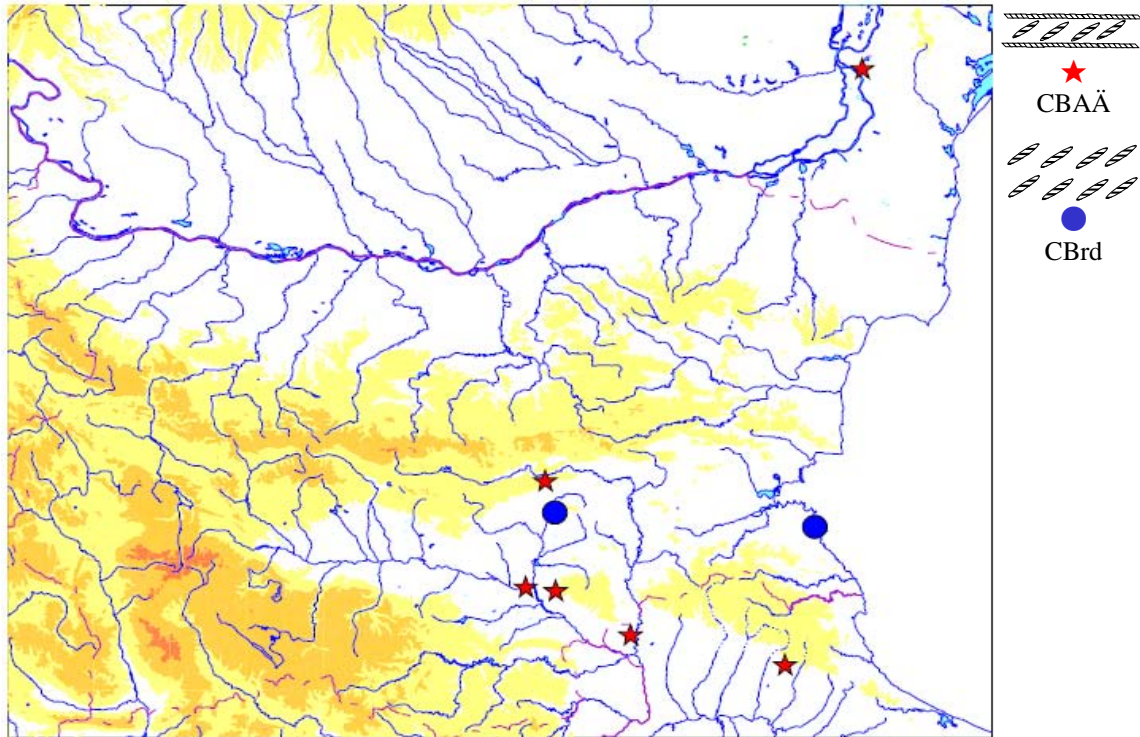
Karten



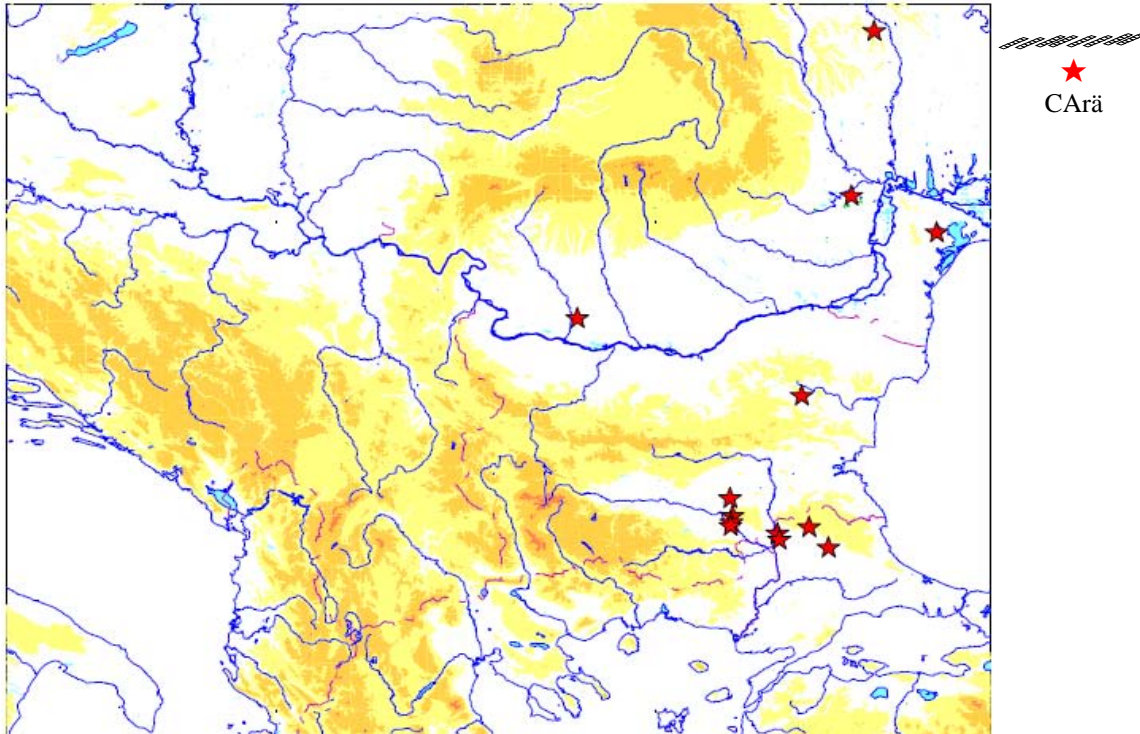
Karte 7: Schräg nebeneinander gesetzte Reihen von Brotlaibstempeln (CBrä).



Karte 8: Brotlaibstempel ohne Rippung (CBv).

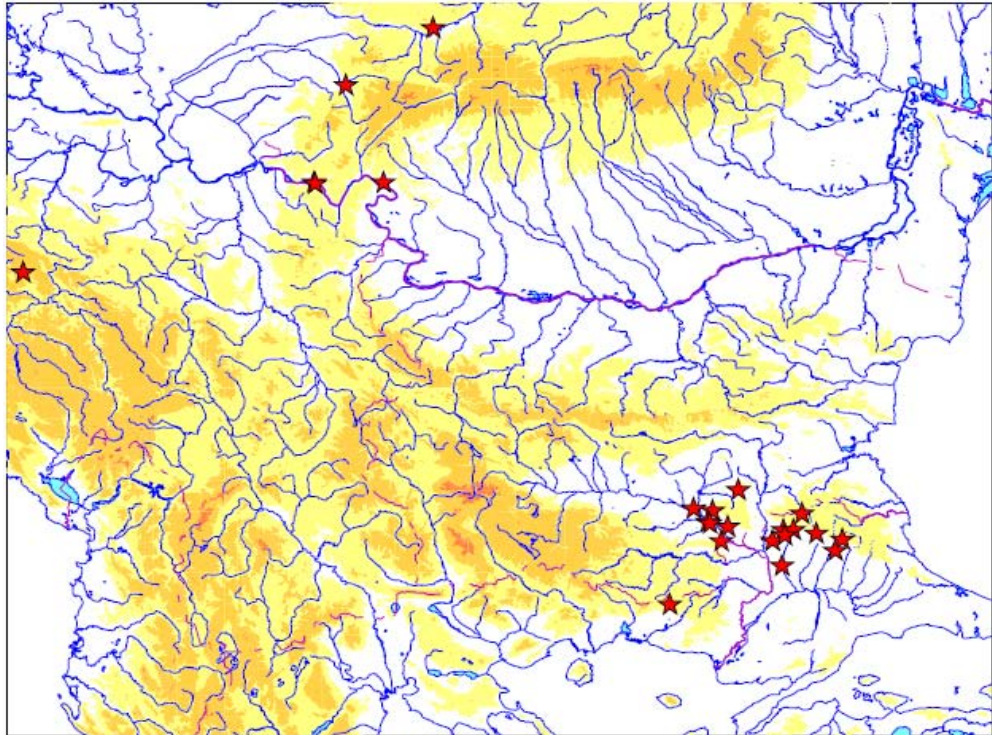


Karte 9: Mehrere Reihen von Brotlaibstempeln (CBrd & CBAÄ).

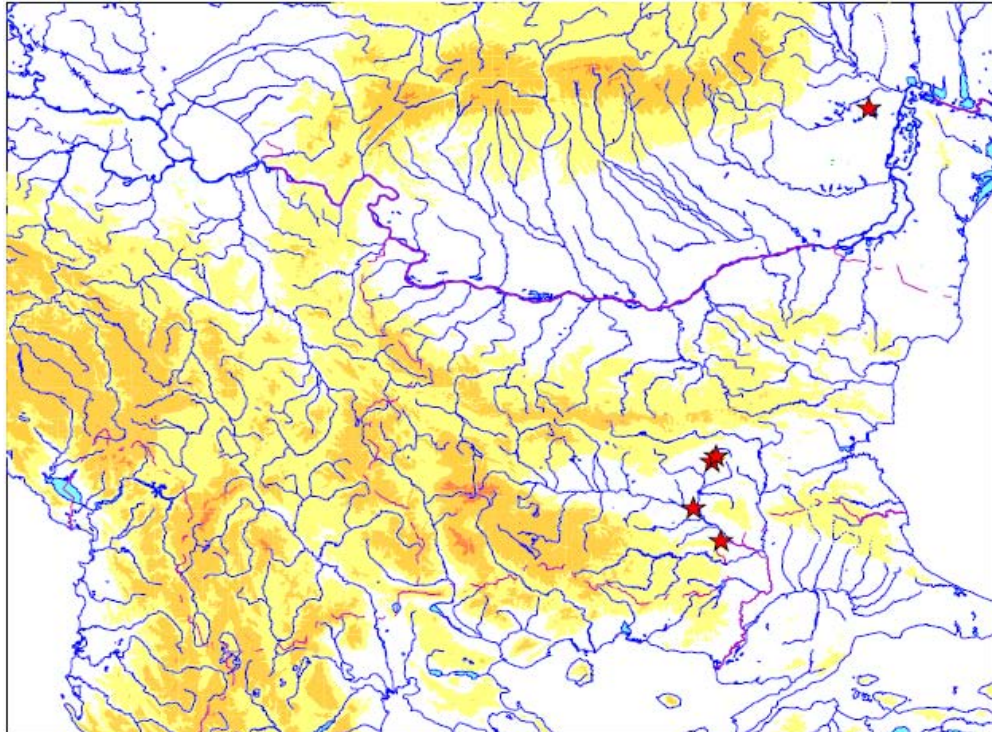


Karte 10: Kurze Abrollungslinien, schräg nebeneinander gesetzt (CARä).

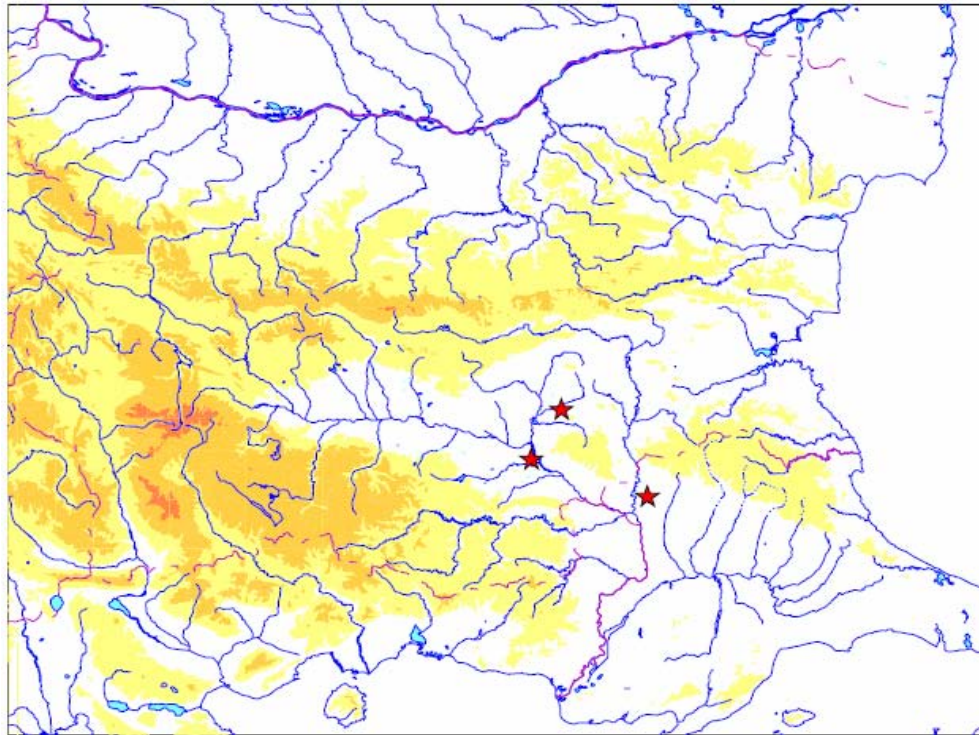
Karten



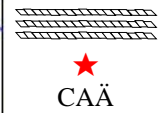
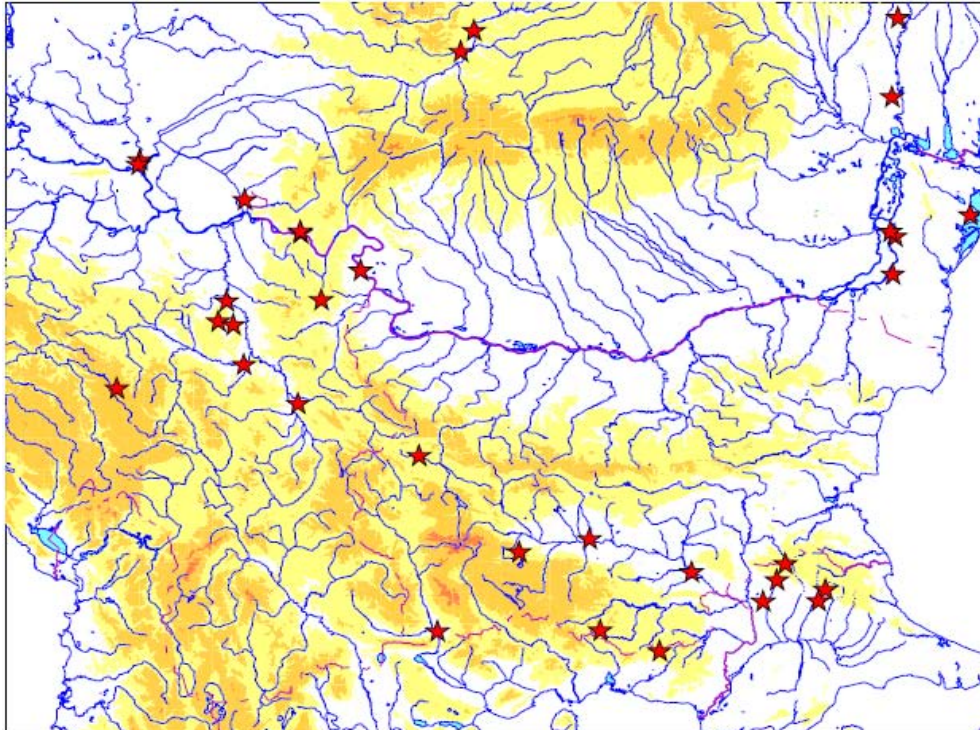
Karte 11: Winkel aus Abrollungslinien (CAW).



Karte 12: Schachbrett (CAQ).

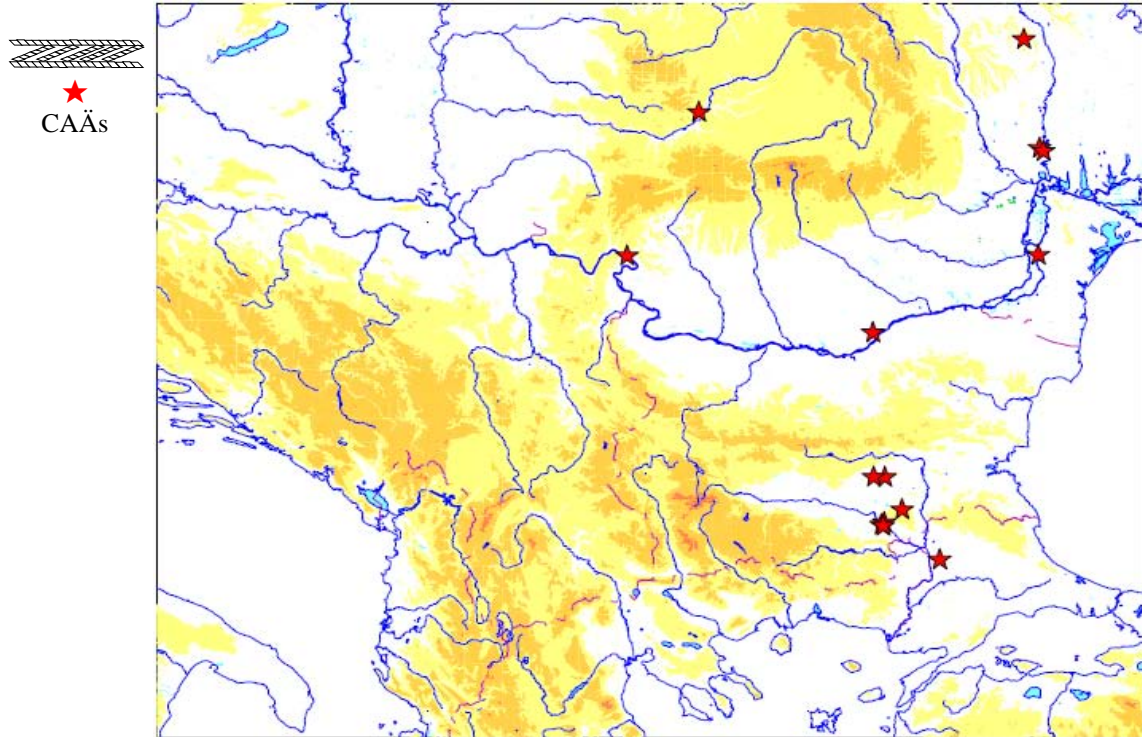


Karte 13: Andreaskreuz (Cark).

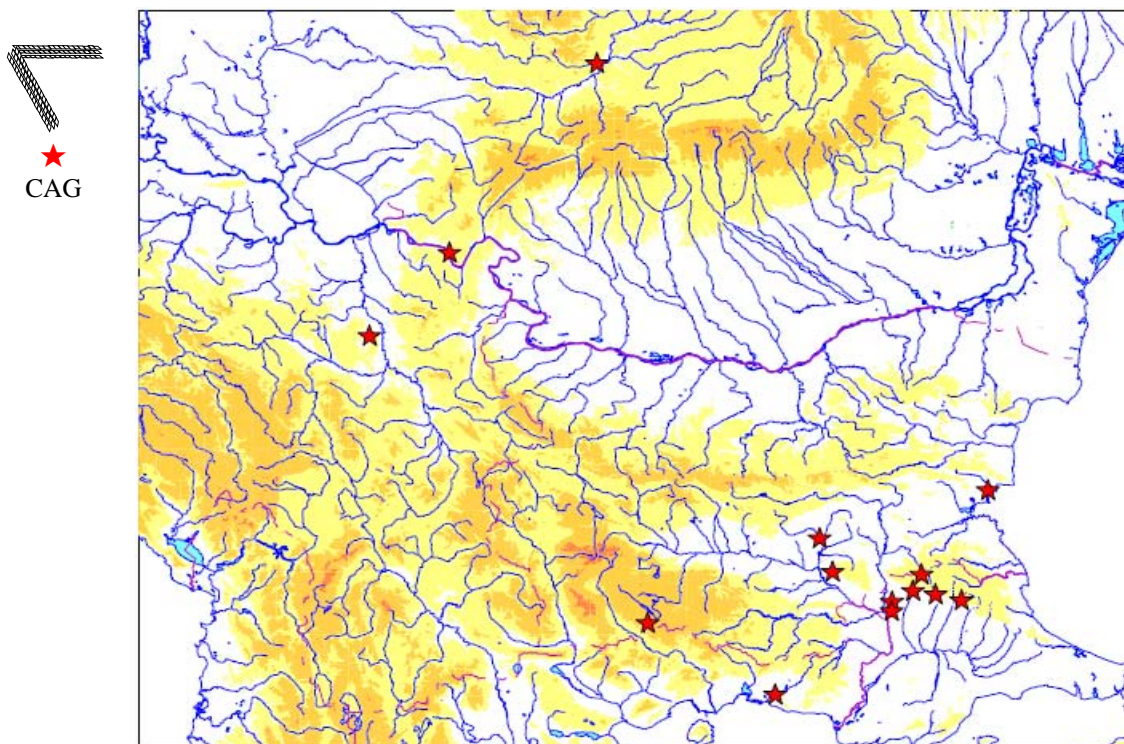


Karte 14: Bänder aus parallelen Linien (CAÄ).

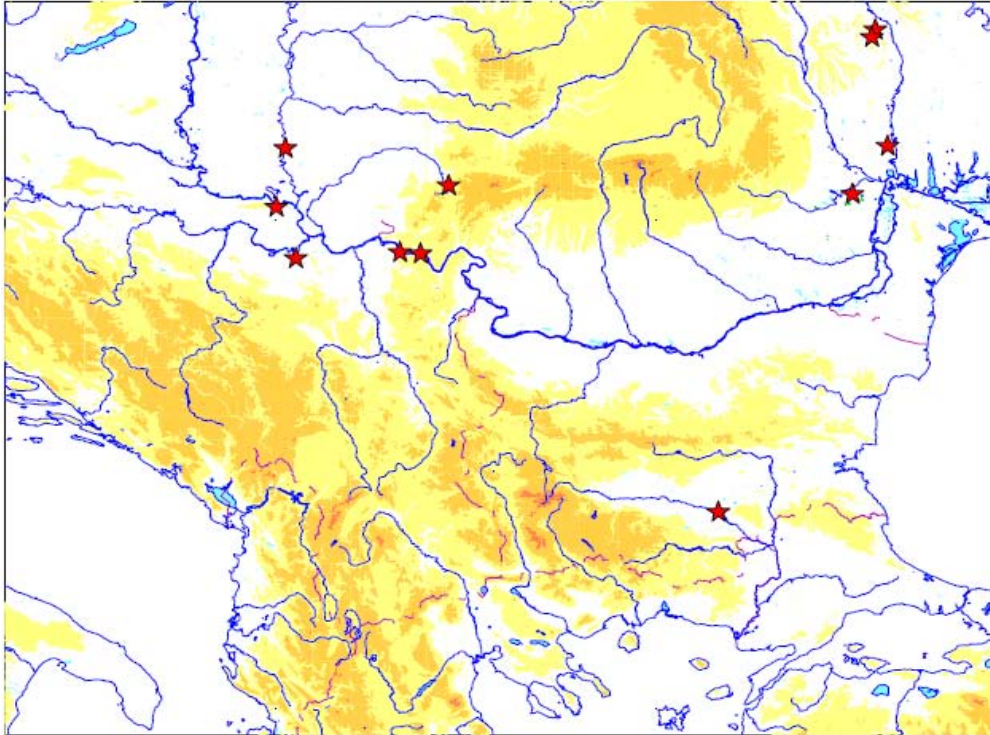
Karten



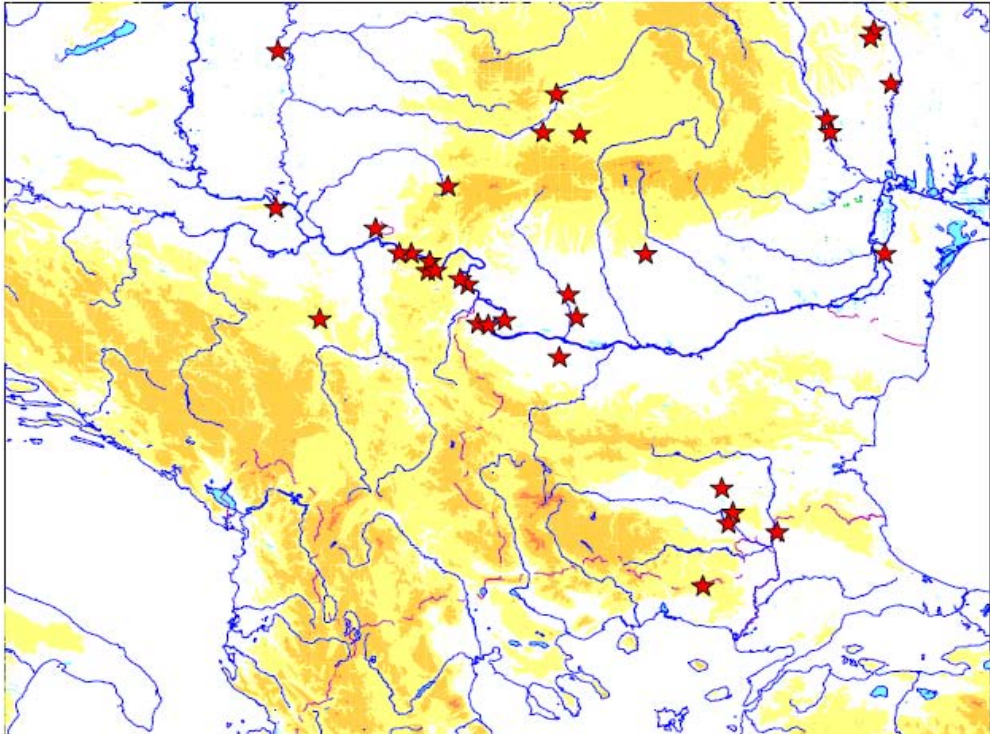
Karte 15: Schraffierte Bänder (CAÄs).



Karte 16: Bänder überziehen das Gefäß (CAG).

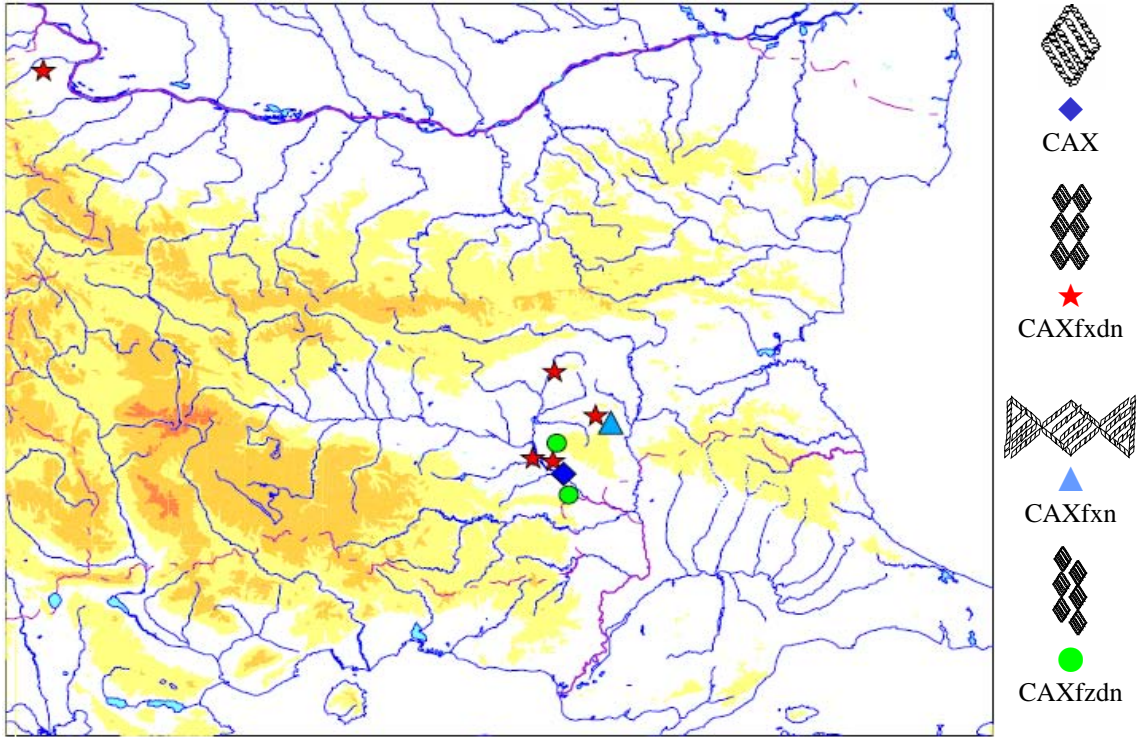


Karte 17: Fischgrät

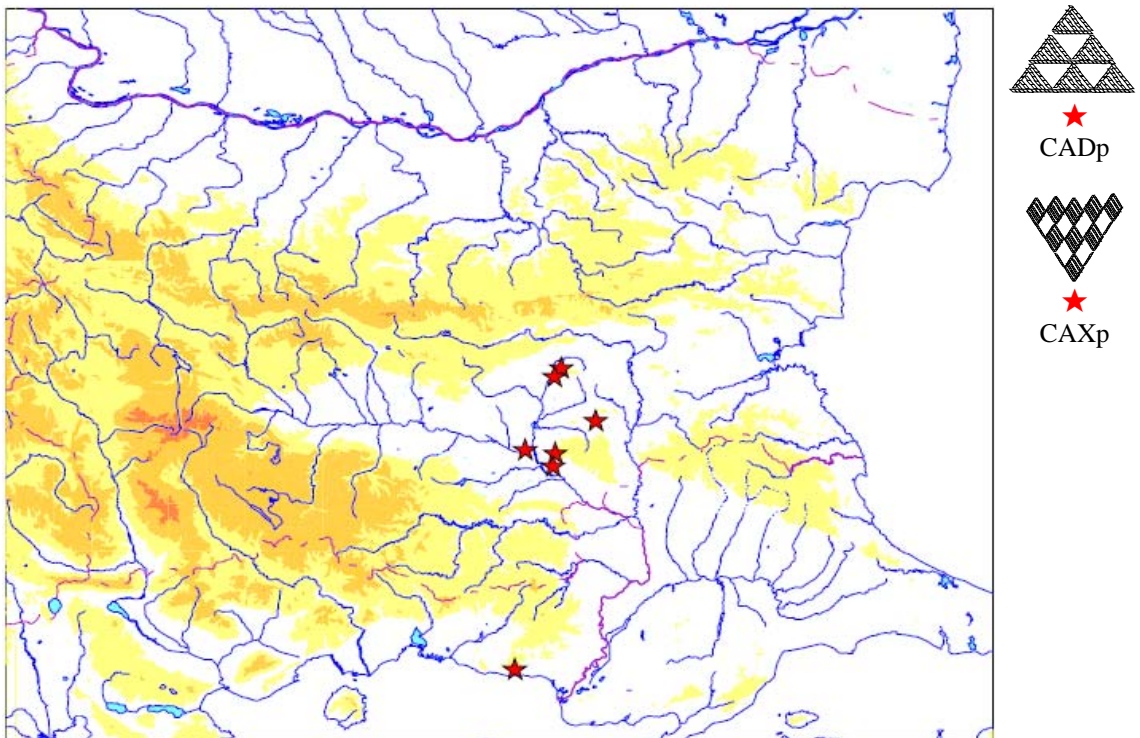


Karte 18: 'Dichte' Muster

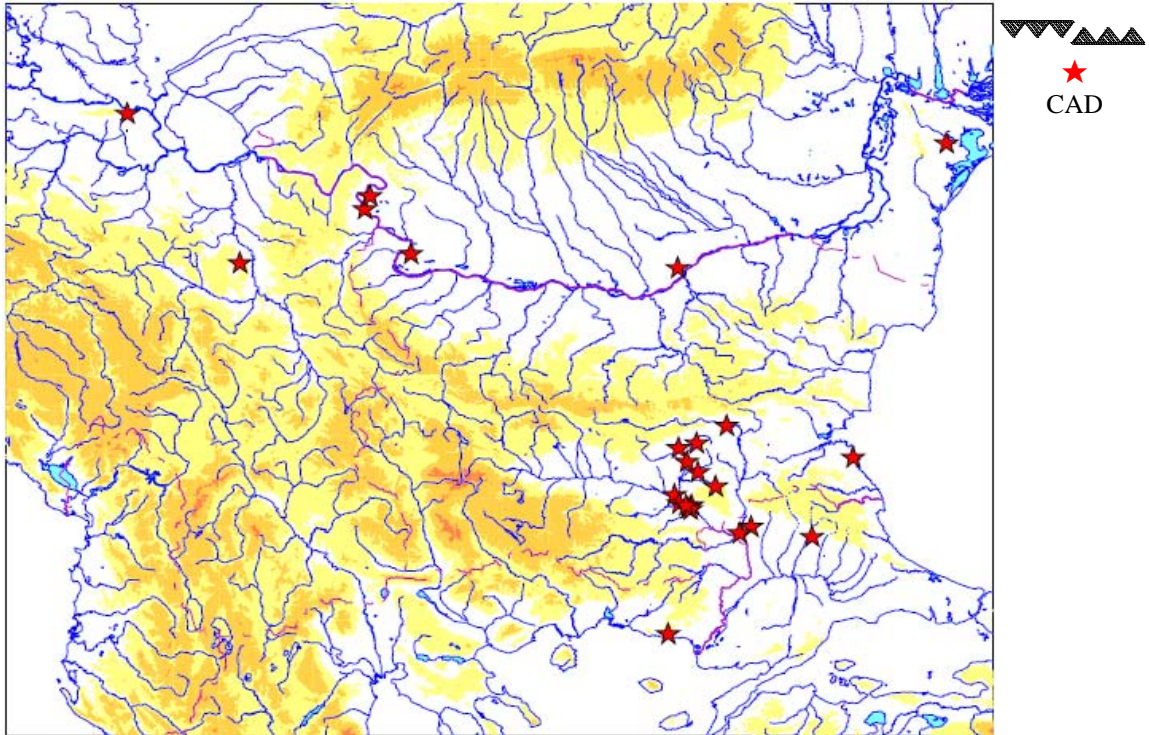
Karten



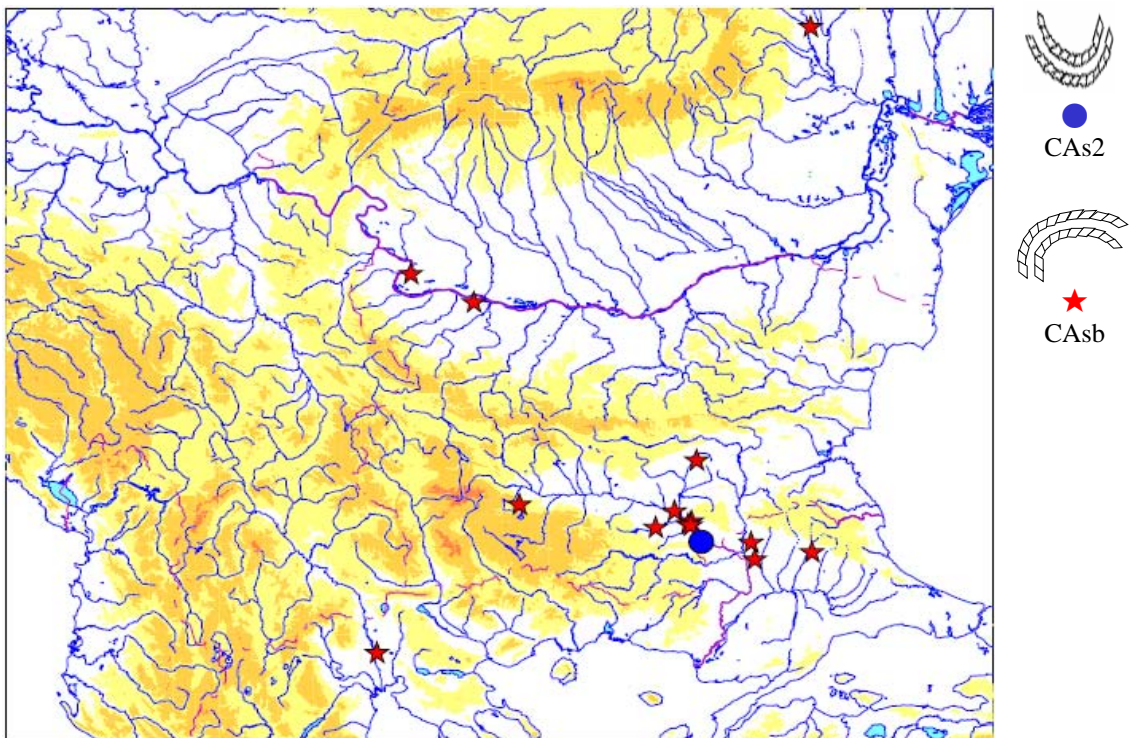
Karte 19: Rauten (CAX, CAXfxdn, CAXfxn & CAXfzdn).



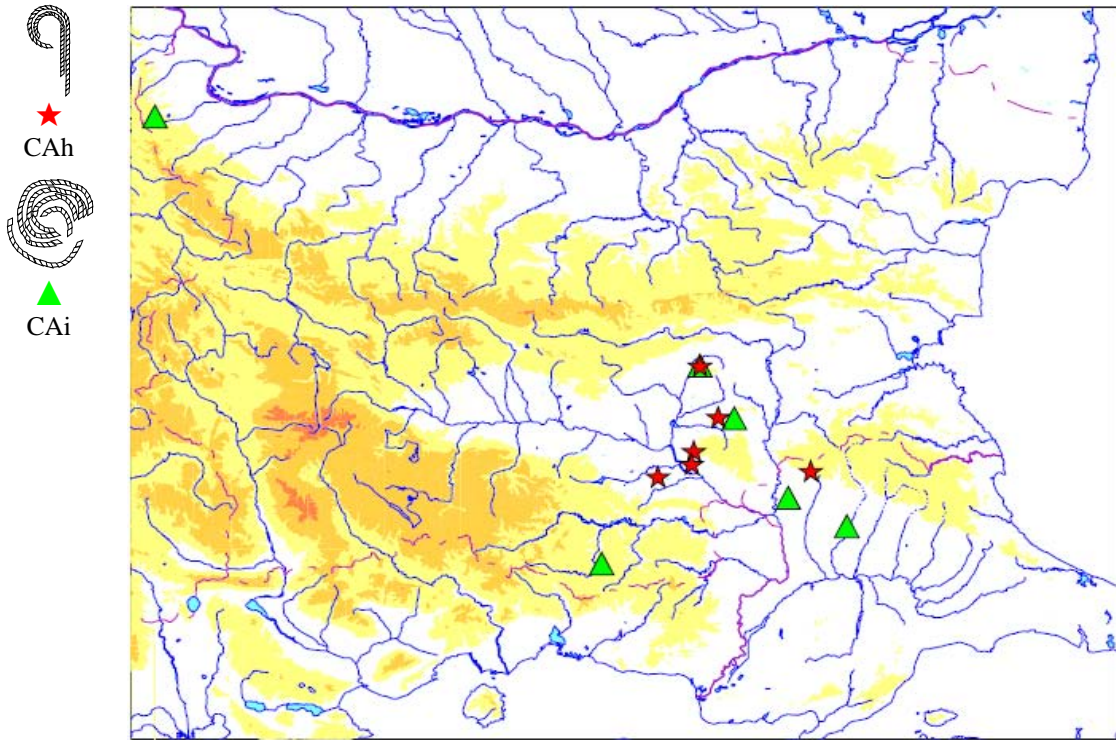
Karte 20: Pyramiden aus Dreiecken und Rauten (CADp & CAXp).



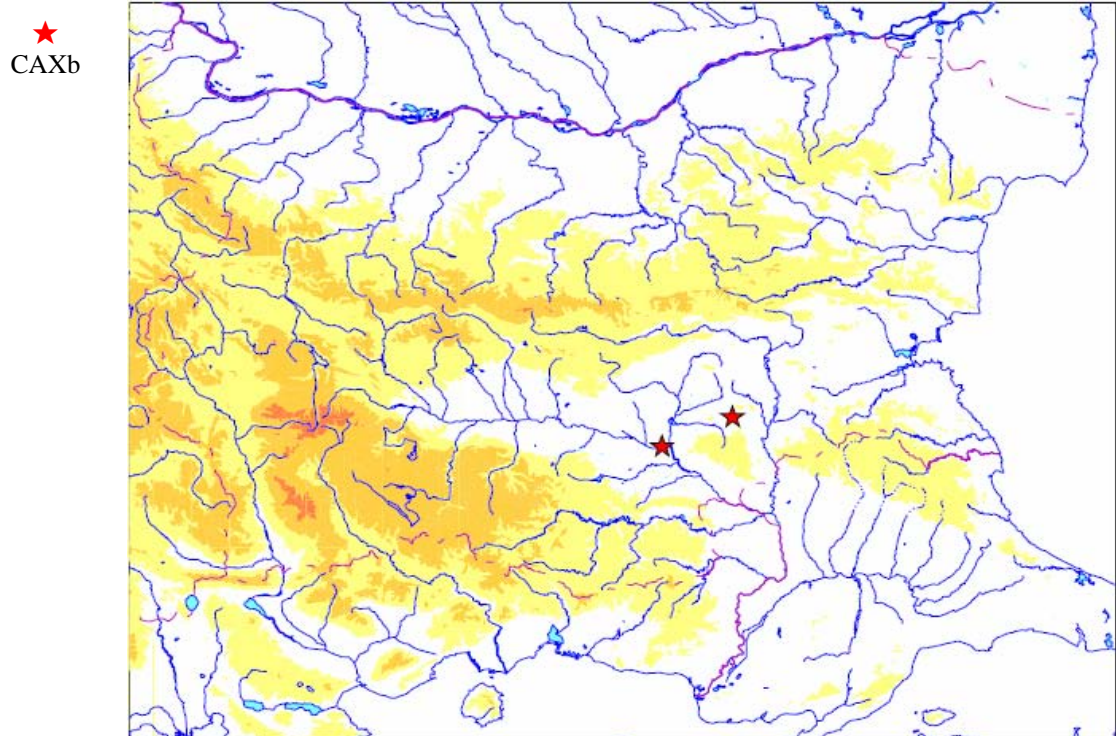
Karte 21: Dreiecke (CAD).



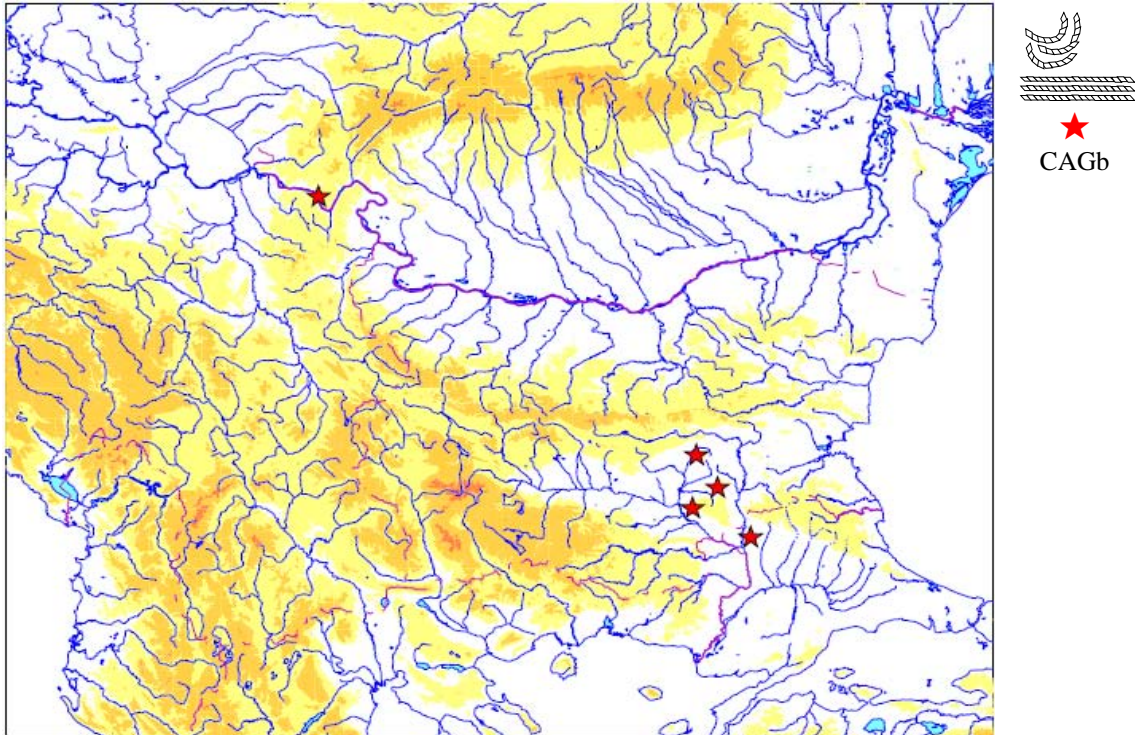
Karte 22: Girlanden und Bögen (CAS2 & Casb).



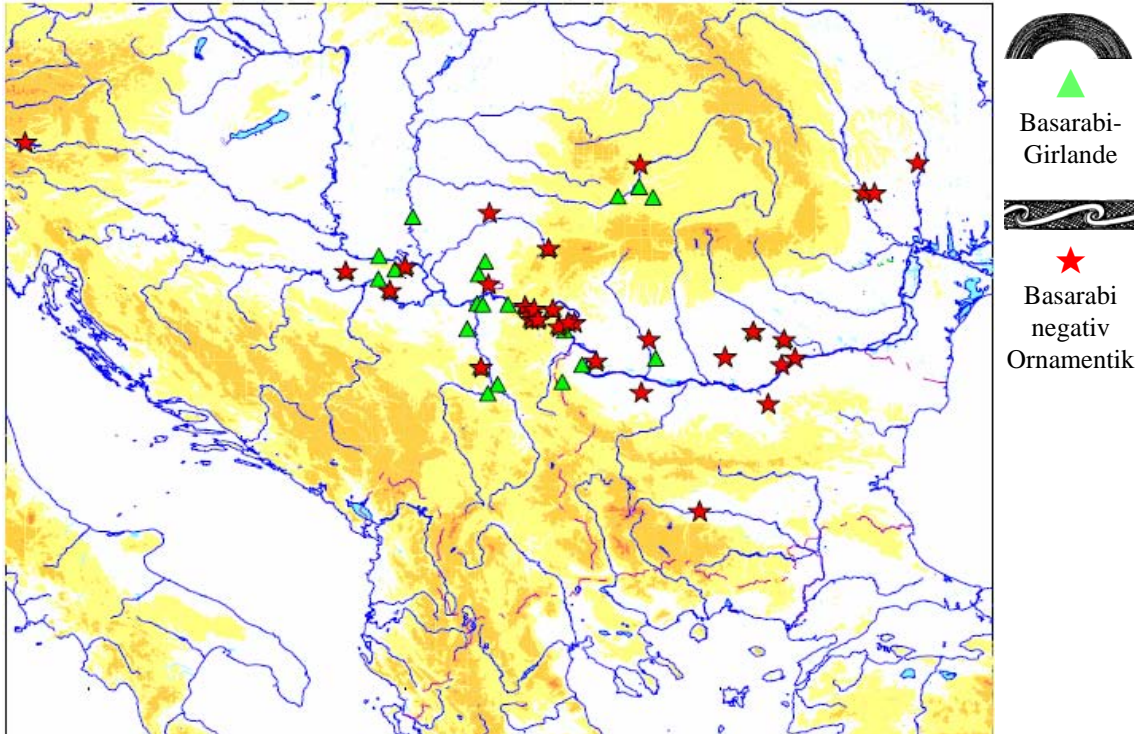
Karte 23: Kreisornamente und Hirtenstabornamente (CAh & Cai).



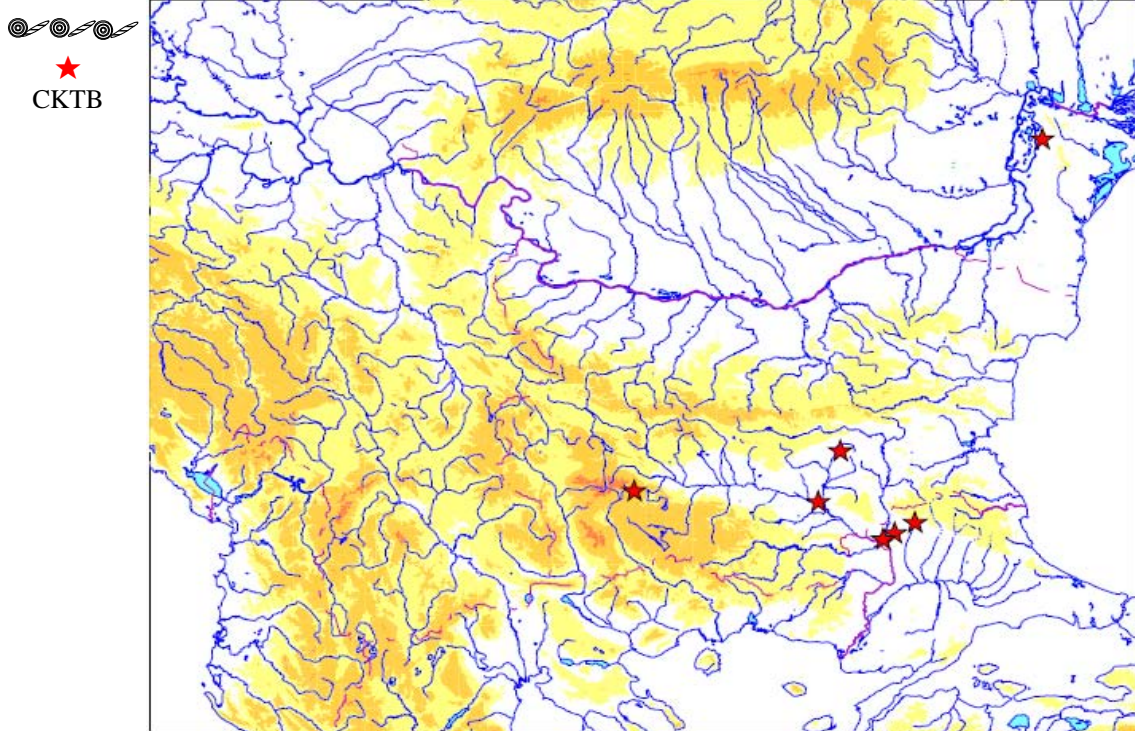
Karte 24: Rauten mit Spiralen (CAXb).



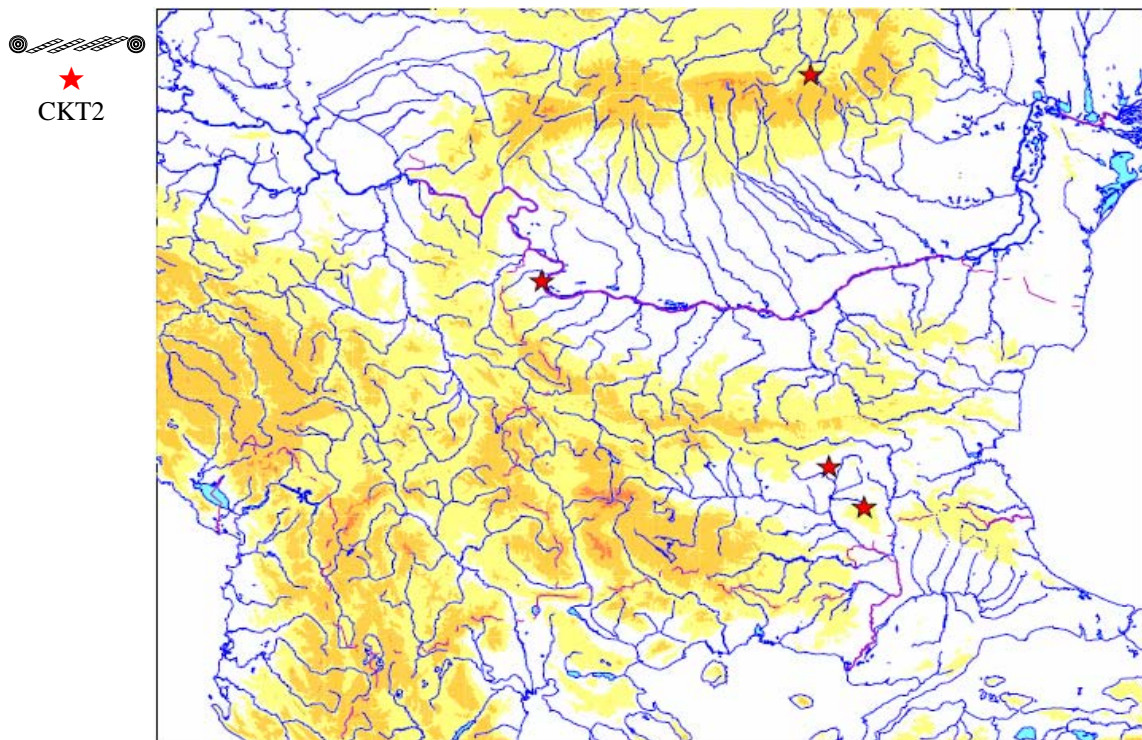
Karte 25: Großflächige Ornamentik aus Bögen und Bändern (CAGb).



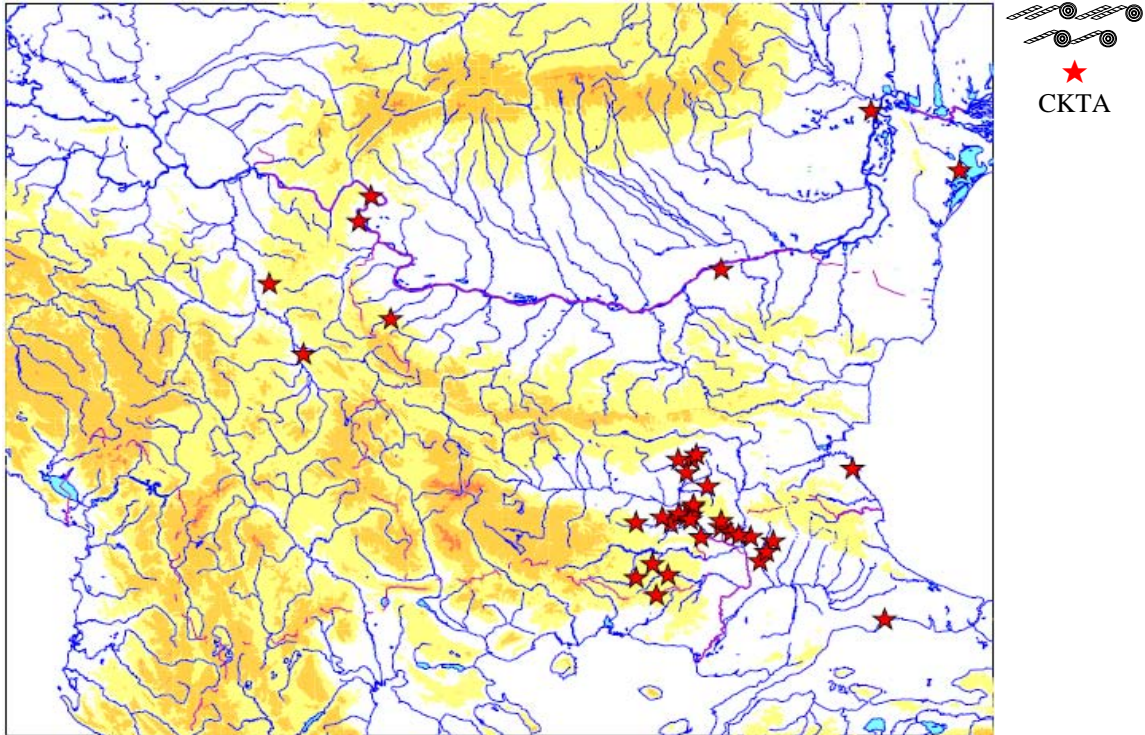
Karte 26: Basarabi-Girlande & Basarabi 'negativ Ornamentik'



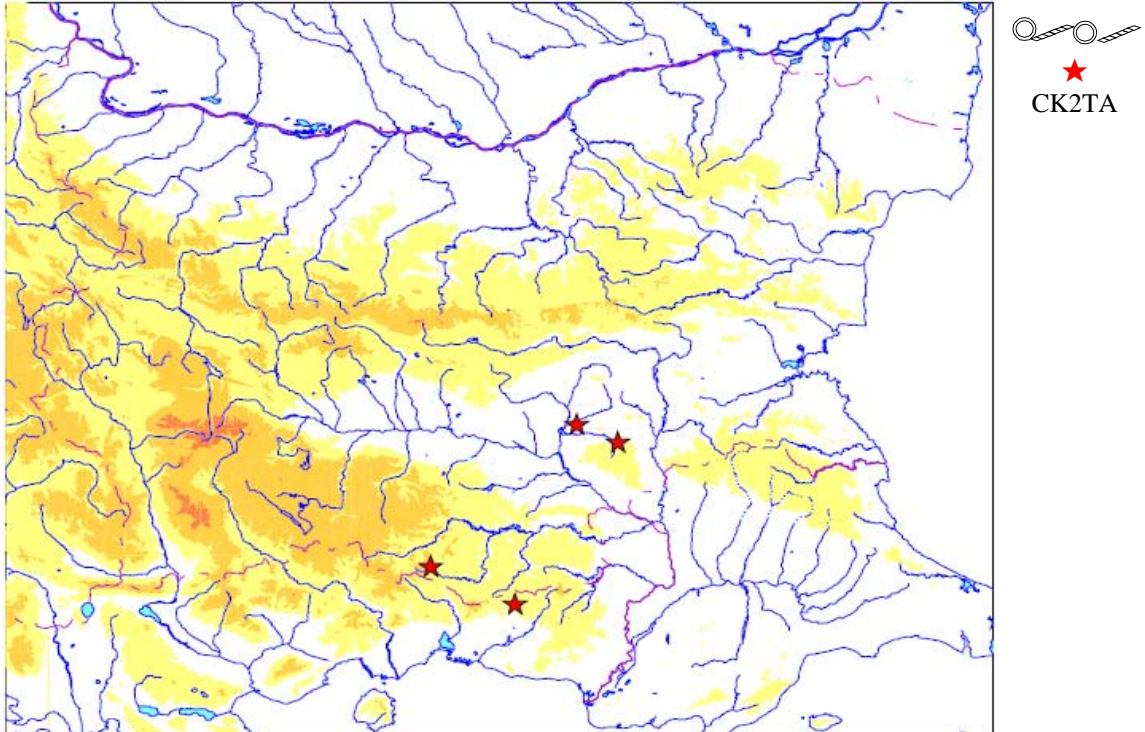
Karte 27: Kreisäugen mit Brotlaibstempeltangenten (CKTB).



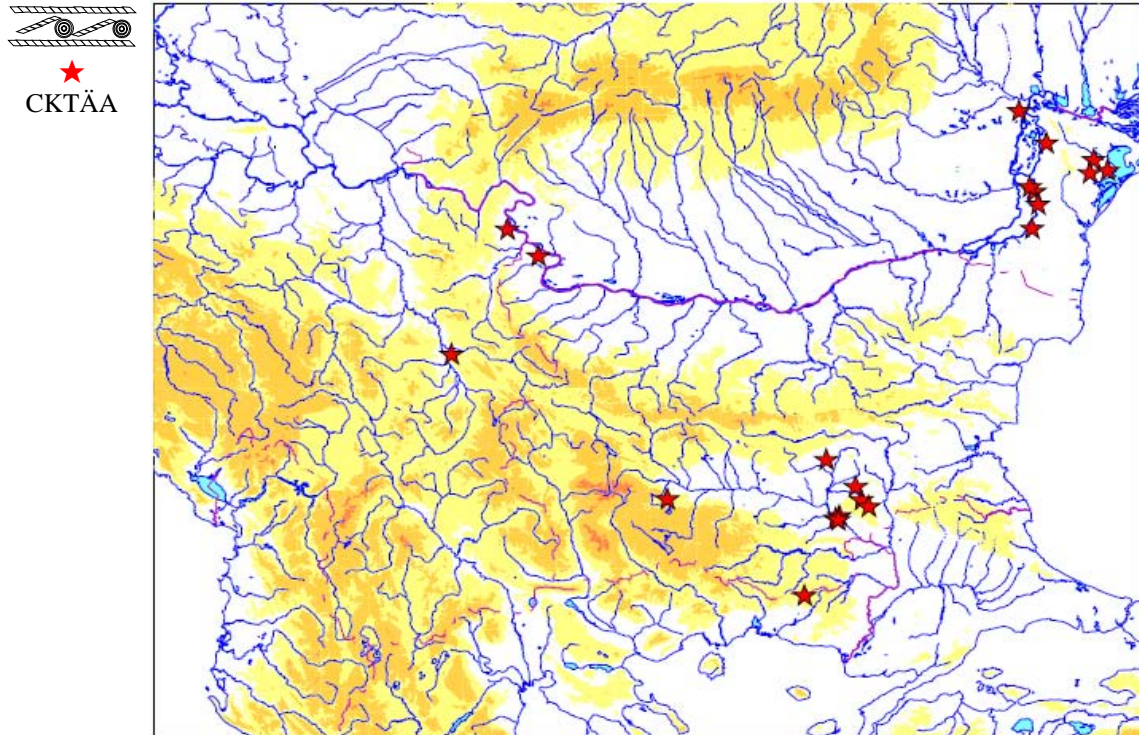
Karte 28: Kreisäugen mit mehreren 'Tangenten' nebeneinander (CKT2).



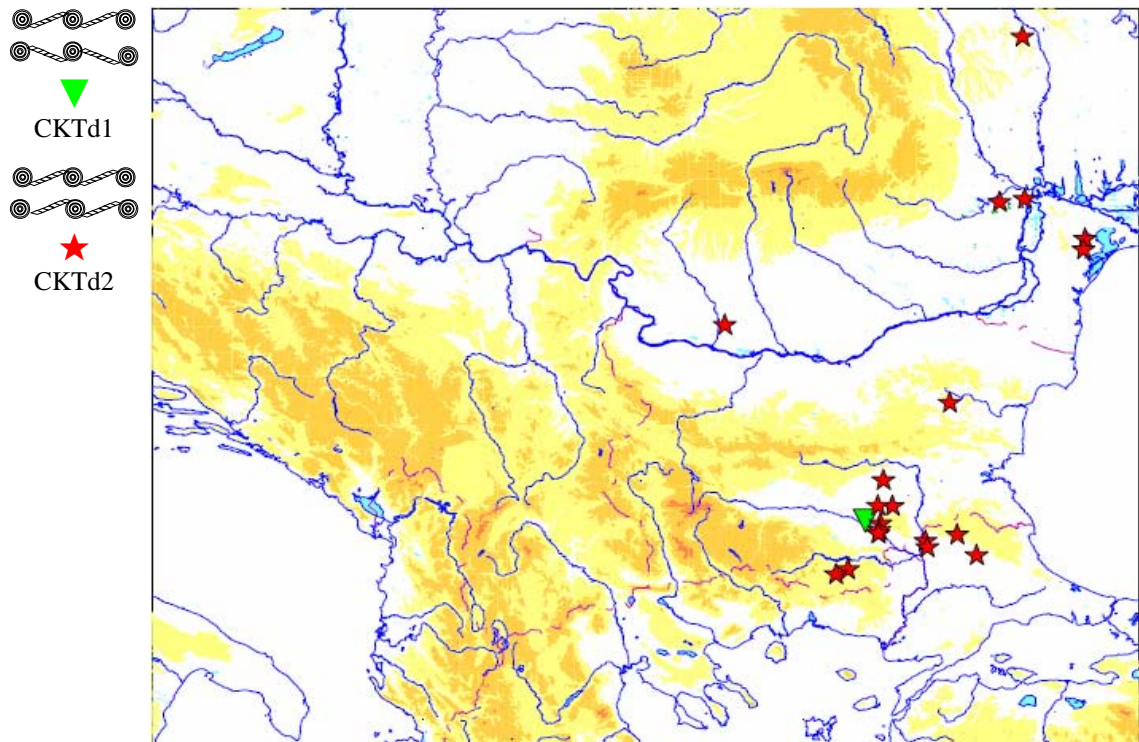
Karte 29: Kreisäugen mit Tangenten aus Abrollung (CKTA).



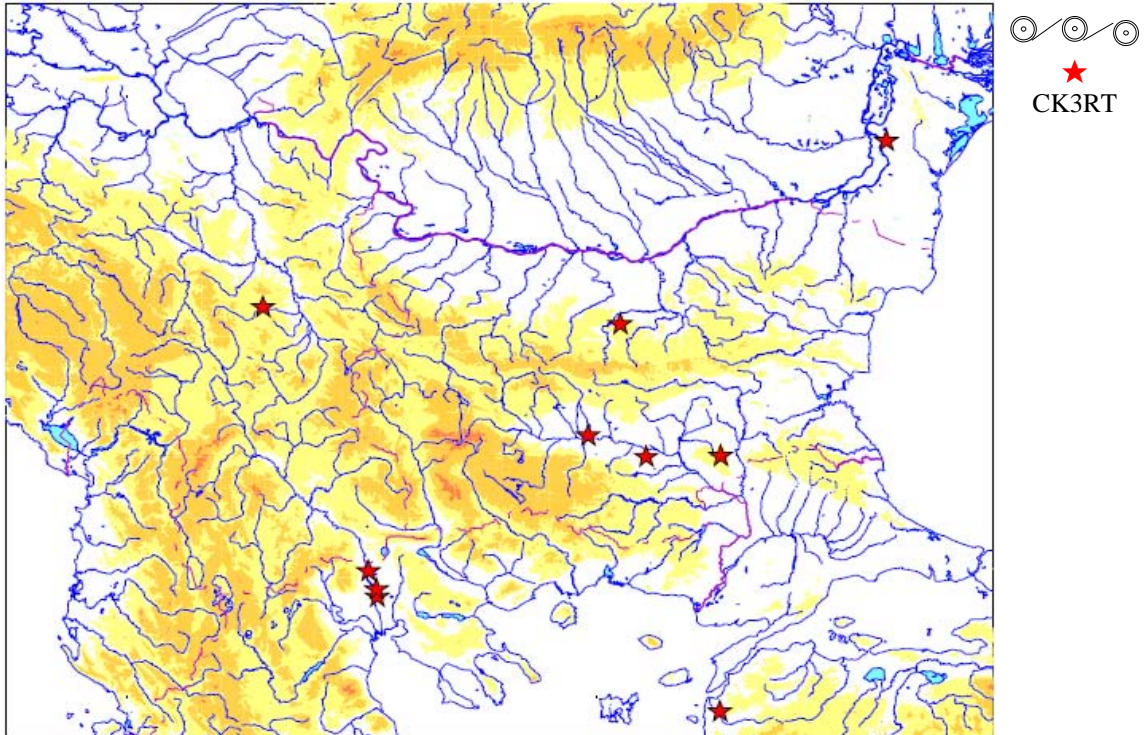
Karte 30: Einfache Kreisäugen mit Abrollungstangenten (CK2TA).



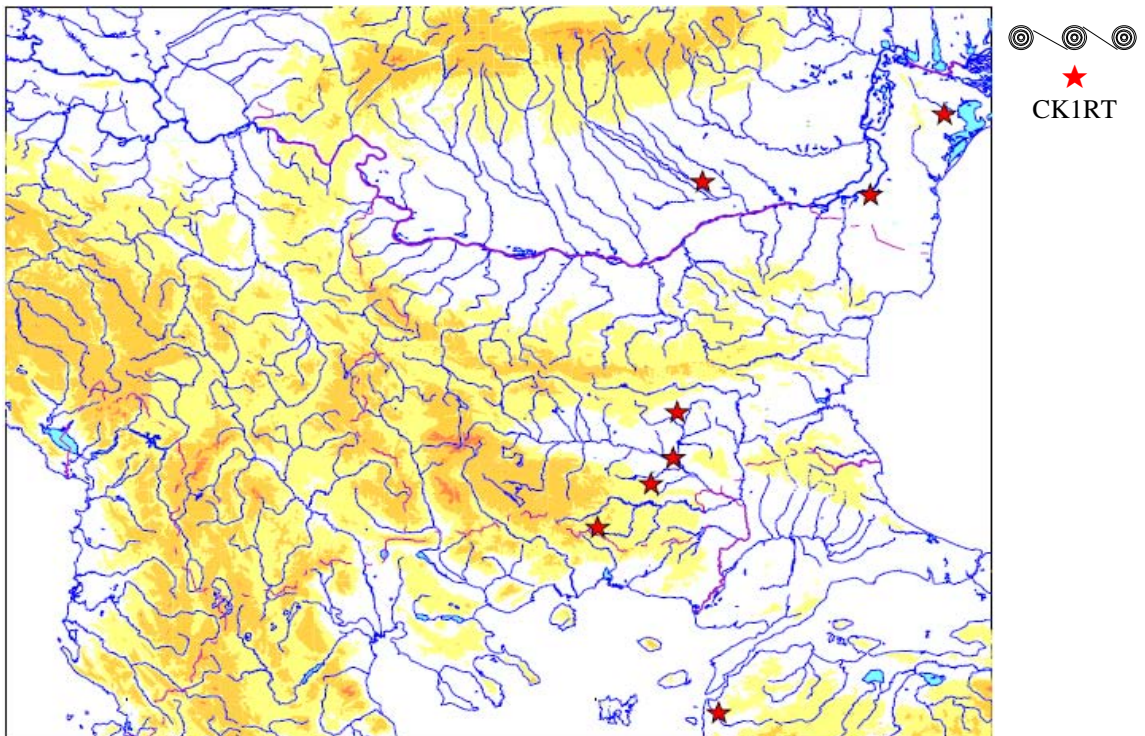
Karte 31: Durch Abrollungslinien zu Bändern gesäumte Kreisaugen-Tangenten-Reihen (CKTÄA).



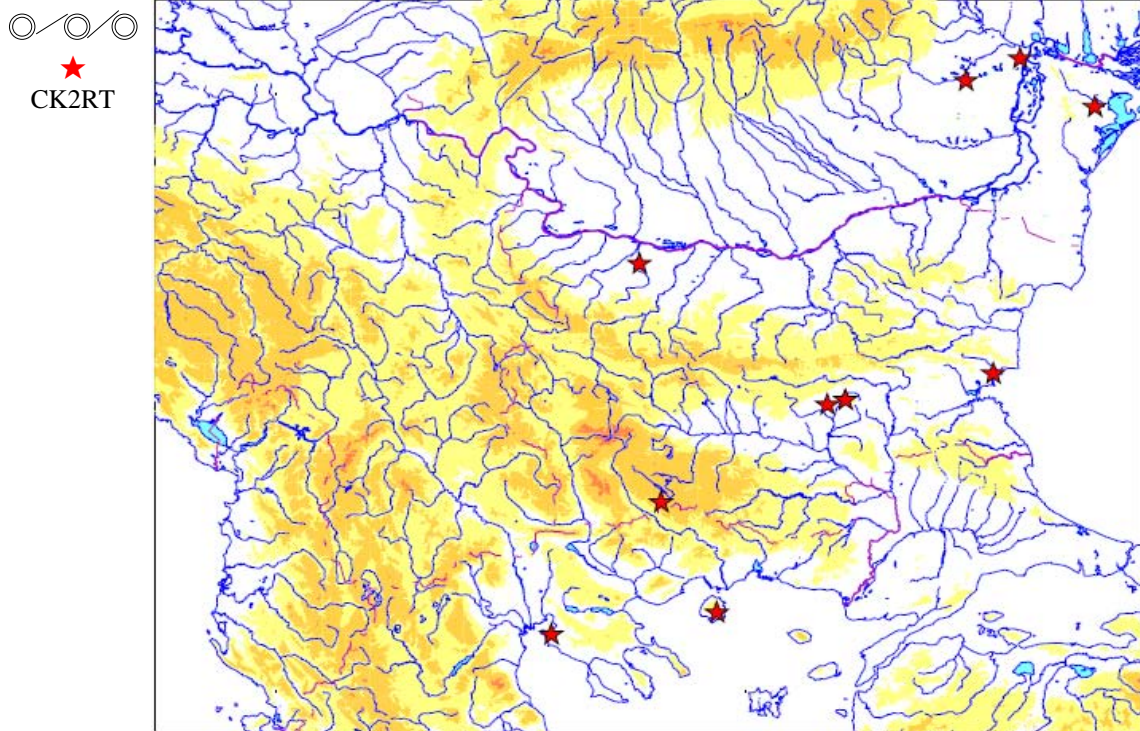
Karte 32: Doppelte und gespiegelte Kreisaugen-Tangenten-Reihen (CKTd1 & CKTd2).



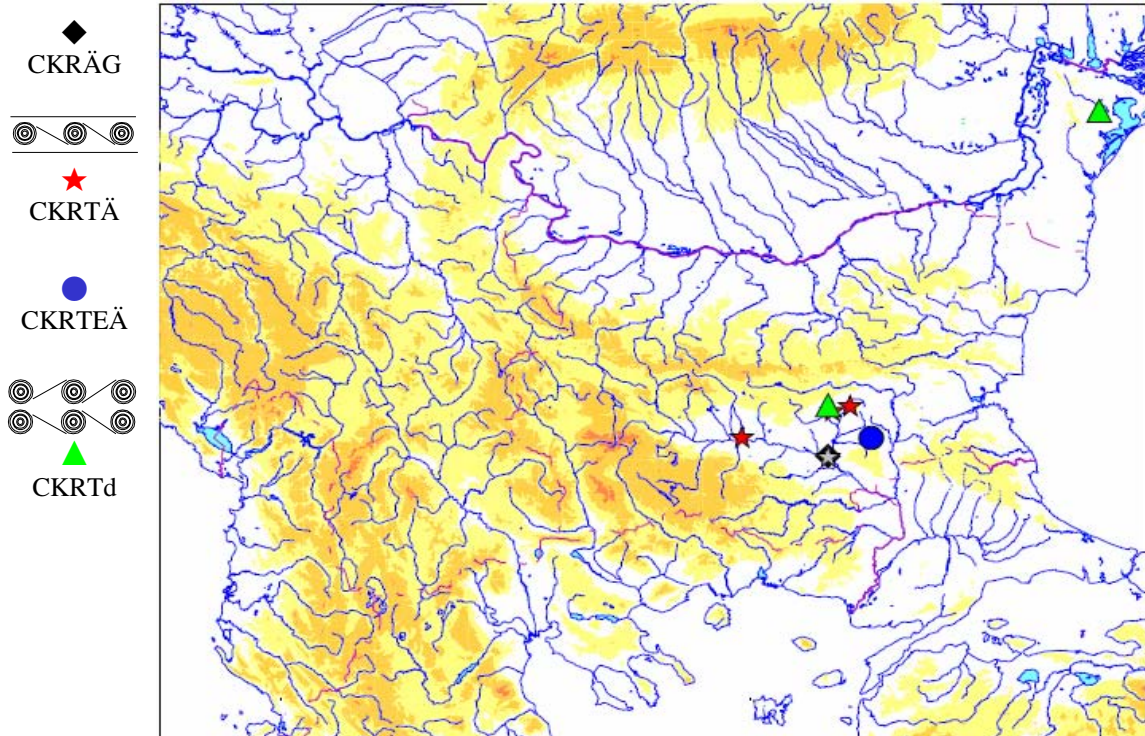
Karte 33: Einfache Kreisaugen mit Punkt und Ritztangente (CK3RT).



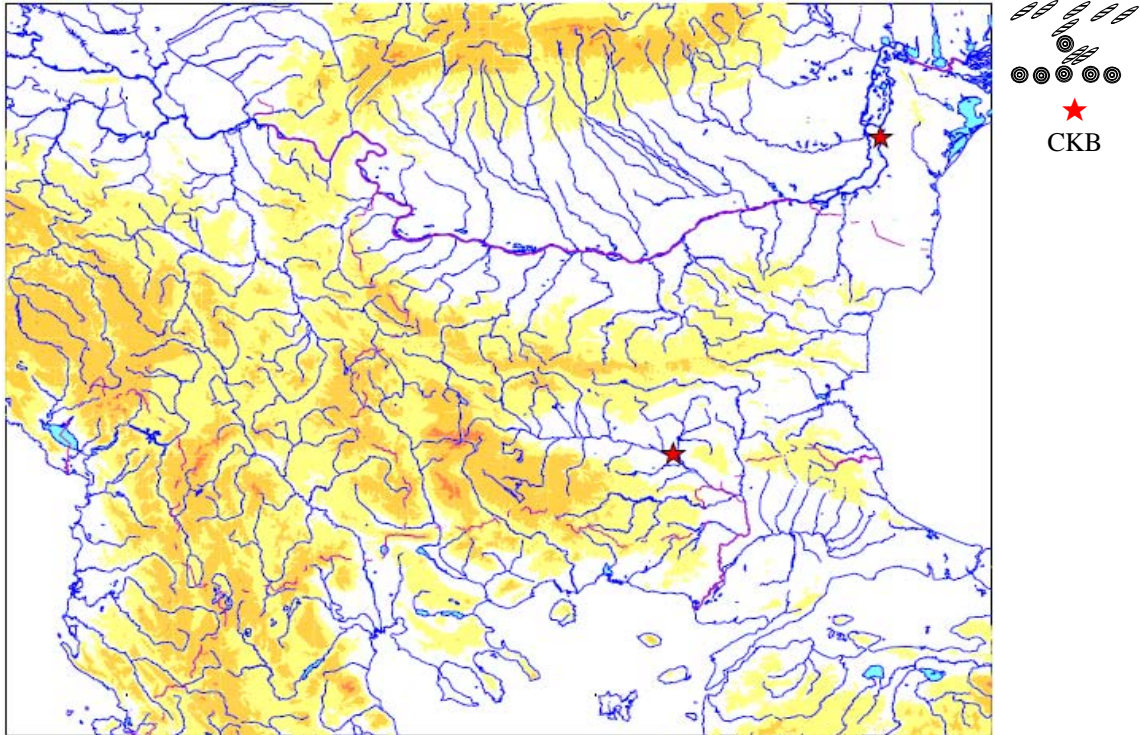
Karte 34: Mehringige Kreisaugen mit Ritztangente (CK1RT).



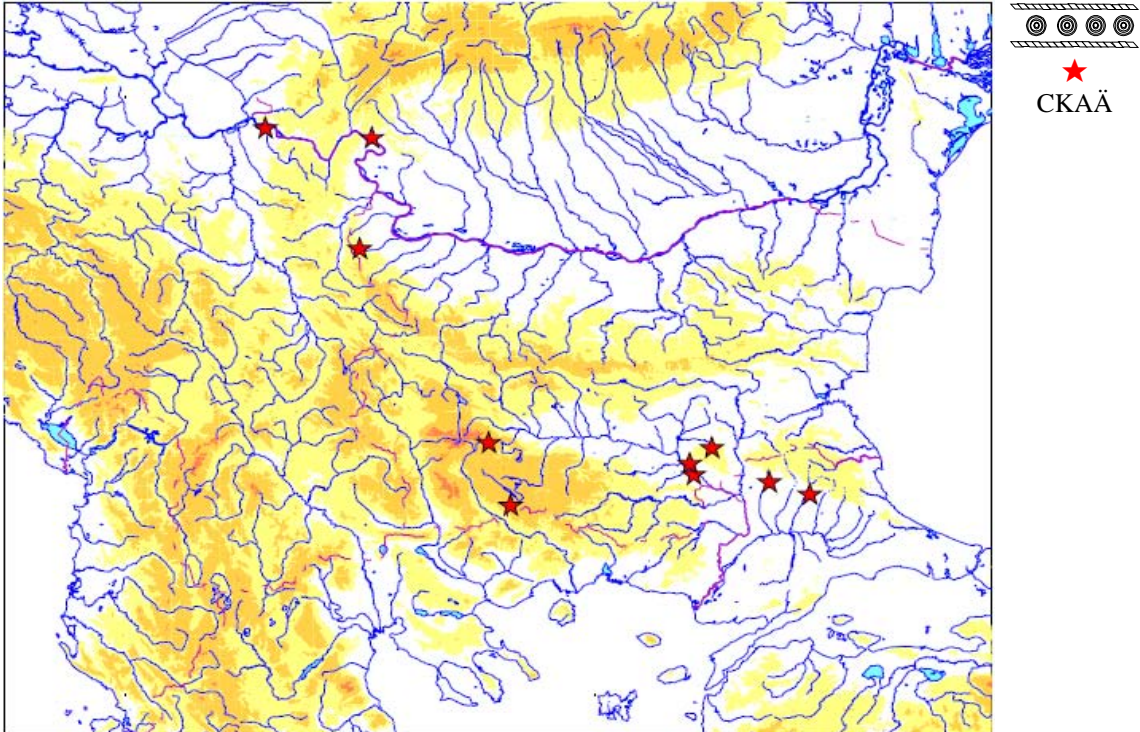
Karte 35: Einfache Kreisäugen mit Ritztangenten (CK2RT).



Karte 36: Durch Ritzlinien zu Bändern gesäumte, gespiegelte und einstich-gesäumte Kreisäugen und größere Muster (CKRÄG, CKRTÄ, CKRTEÄ & CKRTd).



Karte 37: Ornament aus Kreisaugen und Brotlaibstempeln (CKB).



Karte 38: Abrollungsgesäumte Kreisaugenreihe (CKAÄ).