

Aus der Klinik für Gastroenterologie, Infektiologie und Rheumatologie der
Medizinischen Fakultät Charité – Universitätsmedizin Berlin, Campus
Benjamin Franklin

DISSERTATION

**Adipokines as predictors of radiographic spinal
progression in patients with ankylosing spondylitis**

zur Erlangung des akademischen Grades
Doctor medicinae (Dr. med.)

vorgelegt der Medizinischen Fakultät
Charité – Universitätsmedizin Berlin

von

Agnes Hartl

aus Ried im Innkreis, Österreich

Datum der Promotion: 14.09.2018

Inhaltsverzeichnis

Deckblatt.....	1
Inhaltsverzeichnis.....	2
Zusammenfassung.....	3
Abstract.....	5
Eidesstattliche Versicherung.....	7
Ausführliche Anteilserklärung.....	8
Journal Summary List	9
Druckversion der ausgewählten Publikation.....	10
Lebenslauf	21
Publikationsliste	24
Danksagung.....	26

Zusammenfassung

Zielsetzung

Ankylosierende Spondylitis (AS), ist eine chronisch entzündliche Krankheit, die vorrangig die Iliosakralgelenke und die Wirbelsäule betrifft. Radiographisch manifestiert sich die Krankheit typischerweise durch die Bildung von sogenannten Syndesmophyten (vertikale Knochenbrücken zwischen den Wirbelkörpern). Starke funktionelle Einschränkungen der Wirbelsäule bei betroffenen Patienten sind die Folge. Die Geschwindigkeit der radiographischen Progression ist dabei individuell sehr unterschiedlich. Adipokine sind eine Gruppe von Biomarkern, die involviert sind in verschiedene Stoffwechselprozesse, entzündliche Aktivität und auch in den Knochenstoffwechsel. Diese Studie soll dabei die Rolle von Adipokinen als Prädiktoren von radiographischer Progression bei Patienten mit AS untersuchen.

Methoden

120 AS Patienten (82 Männer und 38 Frauen) die die Effects of NSAIDs on Radiographic Damage in AS (ENRADAS) Studie gemäß Protokoll beendeten wurden in die Analyse eingeschlossen. Radiographische Progression nach einer 2-jährigen Beobachtungsphase wurde folgendermaßen definiert: 1) als Verschlechterung des modified Stoke Ankylosing Spondylitis Spine Score (mSASSS) um ≥ 2 Punkte und 2) als Bildung von neuen Syndesmophyten bzw. Progression von zwei Syndesmophyten in eine vollständige Ankylose. Die Serumkonzentrationen der Adipokine Leptin, Chemerin, Omentin, Lipocalin-2, Resistin, Visfatin, Adiponektin (APN) und seiner hochmolekularen Isoform High-Molecular-Weight Adiponektin (HMW-APN) wurden zu Beginn der Studie und nach Ablauf von 2 Jahren mittels Enzyme Linked Immunosorbent Assay (ELISA) gemessen.

Ergebnisse

Leptin und HMW-APN waren signifikant mit der radiographischen Progression assoziiert. Die Serumkonzentrationen beider Adipokine waren zu Studienbeginn niedriger bei Patienten mit radiographischer Progression nach 2 Jahren. Bei Patienten mit mSASSS Progression ≥ 2 Punkte war die Durchschnittskonzentration von Leptin bei $10,5 \pm 9,0$ ng/ml vs. $16,4 \pm 13,7$ ng/ml bei Patienten ohne Progression, respektive $p=0,003$ und von HMW-APN bei $4,95 \pm 3,52$ μ g/ml vs. $6,35 \pm 4,15$ μ g/ml, respektive

$p=0,045$. Bei Patienten mit Bildung von neuen Syndesmophyten bzw. Progression selbiger lag die Serumkonzentration von Leptin bei $10,2\pm 9,6$ ng/ml vs. $16,2\pm 13,4$ ng/ml bei Patienten ohne Progression, respektive $p=0,003$ und von HMW-APN bei $4,53\pm 2,86$ μ g/ml vs. $6,40\pm 4,22$ μ g/ml, respektive $p=0,026$. Lineare und logistische Regressionsanalysen bestätigten die umgekehrte Relation zwischen Leptin bzw. HMW-APN und radiographischer Progression. In einer Analyse aufgetrennt nach Geschlechtern blieb die Assoziation nur bei Männern signifikant. Zusätzlich zeigten sich bei Männern generell niedrigere Leptin und HMW-APN Serumkonzentrationen als bei Frauen.

Schlussfolgerung

Höhere Leptin und HMW-APN Serumkonzentrationen scheinen Patienten mit AS vor radiographischer Progression zu schützen. Die generell erhöhten Leptin und HMW-APN Konzentrationen bei Frauen sind eine mögliche Erklärung für das geringere Ausmaß der strukturellen Wirbelsäulenschäden bei Frauen mit AS im Vergleich zu Männern.

Abstract

Background/Purpose

Ankylosing spondylitis (AS) is a chronic inflammatory disease that especially effects the sacroiliac joints and the spine. A typical radiographic manifestation of the disease is the formation of bony bridges (also called syndesmophytes) between the spinal vertebrae, which leads to functional impairment of the spine. However the rates of radiographic spinal progression vary substantially between individuals. Adipokines are a group of biomarkers that are strongly involved in metabolism, inflammatory processes and also osteogenesis. In this study we aim to investigate the role of adipokines in the prediction of spinal radiographic progression in patients with AS.

Methods

120 AS patients (82 men and 38 women) from the Effects of NSAIDs on Radiographic Damage in AS (ENRADAS) trial, who completed the study per protocol were included in the current analysis. The definition of radiographic spinal progression after a 2-year follow-up period was 1) an increase of the modified stoke ankylosing spondylitis spine score (mSASSS) by ≥ 2 points and/or 2) formation of a new syndesmophyte or a new ankylosis. The adipokines leptin, chemerin, omentin, lipocalin-2, resistin, visfatin, adiponectin (APN) and its high molecular weight form (HMW-APN) were measured in the patients' blood serums at baseline and after 2 years of follow-up with enzyme linked immunosorbent assays.

Results

Leptin and HMW-APN showed a significant association with radiographic spinal progression. At baseline both adipokines showed lower serum levels in patients with radiographic spinal progression defined as mSASSS progression ≥ 2 points after 2 years (leptin: 10.5 ± 9.0 ng/ml vs. 16.4 ± 13.7 ng/ml in patients without progression, $p=0.003$, HMW-APN: 4.95 ± 3.52 μ g/ml vs. 6.35 ± 4.15 μ g/ml, respectively, $p=0.045$) and as syndesmophyte formation/progression after 2 years (leptin: 10.2 ± 9.6 ng/ml vs. 16.2 ± 13.4 ng/ml in patients without progression, $p=0.003$, HMW-APN: 4.53 ± 2.86 μ g/ml vs. 6.40 ± 4.22 μ g/ml, respectively, $p=0.026$). In linear and logistic regression analyses this inverse association of leptin and HMW-APN with spinal radiographic progression

was confirmed. Analyses separated by sex showed the association to be evident only in men with AS. Furthermore men had generally lower leptin and HMW-APN serum levels than females.

Conclusion

Higher leptin and HMW-APN serum levels seem to protect from radiographic spinal progression in patients with AS. Furthermore generally higher leptin and HMW-APN serum levels in females might be an explanation for a lesser extent of structural damage in the spines of female AS patients when compared to males.

Eidesstattliche Versicherung

„Ich, Agnes Hartl, versichere an Eides statt durch meine eigenhändige Unterschrift, dass ich die vorgelegte Dissertation mit dem Thema „*Adipokines as predictors of radiographic spinal progression in patients with ankylosing spondylitis*“ selbstständig und ohne nicht offengelegte Hilfe Dritter verfasst und keine anderen als die angegebenen Quellen und Hilfsmittel genutzt habe.

Alle Stellen, die wörtlich oder dem Sinne nach auf Publikationen oder Vorträgen anderer Autoren beruhen, sind als solche in korrekter Zitierung (siehe „Uniform Requirements for Manuscripts (URM)“ des ICMJE - www.icmje.org) kenntlich gemacht. Die Abschnitte zu Methodik (insbesondere praktische Arbeiten, Laborbestimmungen, statistische Aufarbeitung) und Resultaten (insbesondere Abbildungen, Graphiken und Tabellen) entsprechen den URM (s.o) und werden von mir verantwortet.

Mein Anteil an der ausgewählten Publikation entspricht dem, der in der untenstehenden gemeinsamen Erklärung mit dem Betreuer, angegeben ist.

Die Bedeutung dieser eidesstattlichen Versicherung und die strafrechtlichen Folgen einer unwahren eidesstattlichen Versicherung (§156,161 des Strafgesetzbuches) sind mir bekannt und bewusst.“

28.08.2017

Datum

Unterschrift

Ausführliche Anteilserklärung an der erfolgten Publikation

Publikation : Hartl A, Sieper J, Syrbe U, Listing J, Hermann KG, Rudwaleit M, Podubnyy D. Serum levels of leptin and high molecular weight adiponectin are inversely associated with radiographic spinal progression in patients with ankylosing spondylitis: results from the ENRADAS trial. Arthritis research & therapy. 2017;19(1):140.

Beitrag der Doktorandin im Einzelnen (bitte **ausführlich** ausführen):

Die Doktorandin Agnes Hartl hat als wesentliche Vorarbeit für die Gestaltung der Adipokine Unterstudie von ENRADAS eine Literaturrecherche durchgeführt und darauf basierend die in der vorgelegten Studie zu untersuchenden Adipokine großteils selbstständig ausgewählt (*geschätzter Anteil der Doktorandin: ca. 90%*).

Die Messung der Adipokine in den Seren der in die ENRADAS Studie eingeschlossenen Patienten und Patientinnen wurde von der Doktorandin in selbstständiger Laborarbeit durchgeführt (*ca. 100%*).

Die Ergebnisse der Messung der Adipokine wurden von der Doktorandin unter Anleitung des betreuenden Hochschullehrers Prof. Dr. Denis Poddubnyy mit der Datenbank der ENRADAS Studie zusammengeführt (*ca. 80%*).

Die statistische Analyse und Interpretation der gemessenen Daten wurde von der Doktorandin unter Anleitung des betreuenden Hochschullehrers durchgeführt (*ca. 70%*).

Ein erstes Manuskript für die Publikation, inklusive Tabellen und Grafiken, wurde von der Doktorandin selbstständig erstellt und in Zusammenarbeit mit dem betreuenden Hochschullehrer bis zur endgültigen Version weiterbearbeitet (*ca. 60%*).

Unterschrift der Doktorandin

Journal Data Filtered By: **Selected JCR Year: 2016** Selected Editions: SCIE,SSCI
 Selected Categories: **"RHEUMATOLOGY"** Selected Category Scheme: WoS
Gesamtanzahl: 30 Journale

Rank	Full Journal Title	Total Cites	Journal Impact Factor	Eigenfactor Score
1	ANNALS OF THE RHEUMATIC DISEASES	39,185	12.811	0.083920
2	Nature Reviews Rheumatology	5,316	12.188	0.020550
3	Arthritis & Rheumatology	5,357	6.918	0.025720
4	RHEUMATOLOGY	17,249	4.818	0.033220
5	OSTEOARTHRITIS AND CARTILAGE	13,462	4.742	0.025770
6	SEMINARS IN ARTHRITIS AND RHEUMATISM	4,700	4.498	0.009620
7	CURRENT OPINION IN RHEUMATOLOGY	4,317	4.475	0.010090
8	ARTHRITIS RESEARCH & THERAPY	13,730	4.121	0.033060
9	BEST PRACTICE & RESEARCH IN CLINICAL RHEUMATOLOGY	3,066	3.581	0.005230
10	RHEUMATIC DISEASE CLINICS OF NORTH AMERICA	1,824	3.341	0.002880
11	JOINT BONE SPINE	3,234	3.329	0.006830
12	ARTHRITIS CARE & RESEARCH	13,414	3.319	0.030120
13	JOURNAL OF RHEUMATOLOGY	22,091	3.150	0.025990
14	Current Rheumatology Reports	2,042	2.865	0.005710
15	SCANDINAVIAN JOURNAL OF RHEUMATOLOGY	2,903	2.667	0.004870
16	CLINICAL AND EXPERIMENTAL RHEUMATOLOGY	7,111	2.634	0.011760
17	International Journal of Rheumatic Diseases	1,416	2.624	0.004470
18	LUPUS	6,259	2.454	0.010270
19	CLINICAL RHEUMATOLOGY	6,347	2.365	0.012420
20	Pediatric Rheumatology	703	2.283	0.002310
21	RHEUMATOLOGY INTERNATIONAL	5,292	1.824	0.012320
22	Modern Rheumatology	2,235	1.818	0.006020
23	BMC MUSCULOSKELETAL DISORDERS	7,100	1.739	0.019470

RESEARCH ARTICLE

Open Access



Serum levels of leptin and high molecular weight adiponectin are inversely associated with radiographic spinal progression in patients with ankylosing spondylitis: results from the ENRADAS trial

Agnes Hartl¹, Joachim Sieper¹, Uta Syrbe¹, Joachim Listing², Kay-Geert Hermann³, Martin Rudwaleit⁴ and Denis Poddubnyy^{1,2*}

Abstract

Background: Previous research indicates a role of adipokines in inflammation and osteogenesis. Hence adipokines might also have a pathophysiological role in inflammation and new bone formation in patients with ankylosing spondylitis (AS). The aim of this study was to investigate the role of adipokine serum levels as predictors of radiographic spinal progression in patients with AS.

Methods: A total of 120 patients with definite AS who completed a 2-year follow up in the ENRADAS trial were included in the current study. Radiographic spinal progression was defined as: (1) worsening of the modified Stoke Ankylosing Spondylitis spine (mSASSS) score by ≥ 2 points and/or (2) new syndesmophyte formation or progression of existing syndesmophytes after 2 years. Serum levels of adipokines (adiponectin (APN) and its high molecular weight form (HMW-APN), chemerin, leptin, lipocalin-2, omentin, resistin, visfatin) were measured using enzyme-linked immunosorbent assays.

Results: There was a significant association between radiographic spinal progression and both leptin and HMW-APN. Baseline serum levels of both adipokines were lower in patients who showed radiographic spinal progression after 2 years. This association was especially evident in men; they had generally lower leptin and HMW-APN serum levels as compared to women. The inverse association between adipokines and radiographic spinal progression was confirmed in the logistic regression analysis: the odds ratios (OR) for the outcome “no mSASSS progression ≥ 2 points” were 1.16 (95% CI 1.03 to 1.29) and 1.17 (95% CI 0.99 to 1.38), for leptin and HMW-APN, respectively; for “no syndesmophyte formation/progression” the respective OR were 1.29 (95% CI 1.11 to 1.50) and 1.18 (95% CI 0.98 to 1.42), adjusted for the presence of syndesmophytes at baseline, C-reactive protein at baseline, sex, body mass index (BMI), non-steroidal anti-inflammatory drugs intake score over 2 years, and smoking status at baseline.

(Continued on next page)

* Correspondence: denis.poddubnyy@charite.de

¹Department of Gastroenterology, Infectiology and Rheumatology, Charité Universitätsmedizin Berlin, Hindenburgdamm 30, 12203 Berlin, Germany

²German Rheumatism Research Centre, Charitéplatz 1, 10117 Berlin, Germany

Full list of author information is available at the end of the article



(Continued from previous page)

Conclusion: Serum leptin and HMW-APN predict protection from spinal radiographic progression in patients with AS. Women generally have higher leptin and HMW-APN serum levels that might explain why they have less structural damage in the spine as compared to male patients with AS.

Trial registration: EudraCT: 2007-007637-39. ClinicalTrials.gov, NCT00715091. Registered on 14 July 2008.

Keywords: Axial spondyloarthritis, Ankylosing spondylitis, Leptin, Adiponectin, Adipokine, Radiographic progression, Syndesmophytes

Background

Ankylosing spondylitis (AS) is a chronic inflammatory disease belonging to a family of spondyloarthritides (SpA), which is characterized by inflammation in the pelvis and the spine with subsequent new bone formation that might lead to partial or total ankylosis of the spine. New bone formation in the spine, and particularly development of specific bony bridges between the vertebral bodies, is usually assessed on spinal radiographs and is referred to as radiographic spinal progression. It has been shown in the past that radiographic spinal progression and disease activity are two main determinants of spinal mobility and functional status in AS [1–3]. However, there is substantial individual variation in the radiographic spinal progression rates in AS [4, 5]. It has been shown that baseline syndesmophytes [4, 5], inflammatory activity as assessed by C-reactive protein (CRP), by the Ankylosing Spondylitis Disease Activity Score (ASDAS), or by the presence of inflammatory changes on magnetic resonance imaging (MRI) [6–12], and cigarette smoking [13] are factors associated with more rapid radiographic spinal progression. Further, several biomarkers in the blood were found to be positively associated with new bone formation in the spine: the already mentioned CRP [7], matrix-metalloproteinase-3 [14], vascular endothelial growth factor [15], calprotectin [16], and the adipokine, visfatin [17]. Some biomarkers, such as sclerostin [18] and dickkopf 1 [19], have been associated with radiographic spinal progression, suggesting that these molecules might have a protective effect.

Identification of biomarkers related to the development of structural damage in AS helps not only to predict progression (there are currently no proven therapeutic options to retard progression; however, this might, change in the near future), but it also helps us to better understand disease mechanisms. For instance, until now, the reason why men with AS develop more structural damage in the axial skeleton than women has not been explained [5, 20].

Adipokines are biologically active substances, which are synthesized and released by fat tissue. They have a wide range of regulatory functions not only in energy metabolism, but also in inflammation and osteogenesis [21, 22]. The role of adipokines in the development of

inflammation and new bone formation in AS, however, is as yet unclear. The aim of the present study was to investigate the association between adipokine serum levels and radiographic spinal progression in patients with AS.

Methods

Patients

Altogether 120 patients from the trial, Effects of NSAIDs on Radiographic Damage in AS (ENRADAS), who completed the study per protocol and for whom serum was available, were included in the analysis. Serum samples were not available for two patients who completed the study per protocol, and these patients were excluded, therefore, from the current study. Baseline characteristics of the 120 patients included in this analysis are shown in Table 1. The design of the ENRADAS trial has been described in detail elsewhere [23]. Briefly, ENRADAS was a prospective, randomized, controlled trial aimed at investigation of the influence of non-steroidal

Table 1 Baseline characteristics of the included patients from the ENRADAS trial

Parameter	All patients (n = 120)	Continuous (n = 61)	On demand (n = 59)
Age, years	42.9 ± 10.3	40.7 ± 9.7	45.1 ± 10.4
Male patients, n (%)	82 (68.3)	43 (70.5)	39 (66.1)
Symptom duration, years	14.8 ± 12.2	12.8 ± 11.4	16.9 ± 12.7
HLA-B27 positive, n (%)	108 (90)	54 (88.5)	54 (91.5)
ASDAS-CRP	2.8 ± 0.7	2.7 ± 0.7	2.8 ± 0.7
BASDAI, points NRS (0–10)	4.2 ± 1.5	4.1 ± 1.5	4.2 ± 1.5
BASFI, points NRS (0–10)	3.3 ± 2.2	2.9 ± 2.1	3.7 ± 2.2
CRP, mg/L	10.3 ± 12.1	7.9 ± 7.4	12.6 ± 15.2
CRP > 5 mg/L, n (%)	68 (57.1)	33 (55)	35 (59.3)
BASMI, points (0–10)	2.6 ± 2.2	2.2 ± 2.1	3.0 ± 2.3
mSASSS, points	13.8 ± 17.2	11.1 ± 15.6	16.6 ± 18.4
Patients with syndesmophytes at baseline, n (%)	68 (56.7)	32 (52.5)	36 (61.0)
BMI, kg/m ²	27.2 ± 5.3	27.3 ± 5.2	27.2 ± 5.4

Characteristics are presented as mean ± standard deviation unless indicated otherwise. ASDAS Ankylosing Spondylitis Disease Activity Score, BASDAI Bath Ankylosing Spondylitis Disease Activity Index, BASFI Bath Ankylosing Spondylitis Functional Index, BASMI Bath Ankylosing Spondylitis Metrology Index, BMI body mass index, CRP C-reactive protein, mSASSS modified Stoke Ankylosing Spondylitis Spine Score

anti-inflammatory drugs (NSAIDs) on radiographic spinal progression in patients with AS. Patients were randomly assigned to treatment with diclofenac either continuously or on demand for a period of 2 years. Other NSAIDs in the same equivalent dose were allowed in patients with diclofenac intolerance; however, about 2/3 of the patients remained on diclofenac until the end of year 2. Tumor necrosis factor (TNF) α blockers were not allowed in the trial. There was no difference in radiographic spinal progression between patients who took NSAIDs continuously and those who took them on demand, justifying the decision to pool both treatment groups.

Assessment of radiographic spinal progression

Radiographs of the lumbar and cervical spine (lateral projection) were obtained at baseline and after a period of 2 years. Radiographs were centrally collected, digitized, anonymized, and subsequently scored by two experienced and calibrated readers (KGH and DP) in a randomly selected and concealed order according to the modified Stoke Ankylosing Spondylitis Spine Score (mSASSS) system [24]. The mean mSASSS was calculated from the two readers' scores. Radiographic spinal progression was defined as: (1) mSASSS worsening by ≥ 2 points after 2 years, and/or (2) development of at least one new syndesmophyte or progression of two single syndesmophytes into a bridging syndesmophyte, in the opinion of both readers after 2 years.

Measurement of adipokine serum levels

Adipokine serum levels were measured at baseline and after 2 years of follow up (week 100) using commercially available enzyme linked immunosorbent assays (ELISA). The following adipokines were selected based on data from the available literature [25, 26] indicating a possible association with bone metabolism and/or inflammation: adiponectin (APN) (BioVendor - Research and Diagnostic Products, Czech Republic) and its high molecular weight form (HMW-APN) (R&D Systems, MN, USA), chemerin (BioVendor - Research and Diagnostic Products), leptin (Invitrogen, CA, USA) lipocalin-2 (R&D Systems), omentin (BioVendor - Research and Diagnostic Products), resistin (Adipogen International, Switzerland), and visfatin (Adipogen International).

Statistical analysis

First, we analyzed differences in the mean adipokine serum levels between groups with and without radiographic spinal progression (Mann-Whitney U test). Adipokines with significantly different baseline serum levels in progressors and non-progressors were further analyzed. Since adipokines are mainly produced by adipose tissue and their serum levels correlate with body

mass index (BMI) [25–27], the values were corrected for BMI by calculating an adipokine/BMI ratio that was used in the analysis in addition to the measured serum levels. Further, an HMW-APN/APN ratio reflecting a proportion of a more biologically active form of APN in the total APN [28] was calculated and included in the analysis. For the analysis of the influences of the treatment arm on the change in serum levels of adipokines, we performed the non-parametric Wilcoxon test on the paired measures, and an analysis of covariance (ANCOVA) with adjustment for the baseline adipokine levels. Receiver operating characteristic (ROC) analysis was performed to evaluate the adipokines as predictors of radiographic spinal progression. The association between serum adipokines and radiographic spinal progression was further explored in the logistic regression analysis. The parameter estimates were adjusted for the presence of syndesmophytes at baseline, baseline CRP, sex, BMI (for crude adipokine serum levels and the HMW-APN/APN ratio), NSAID intake score over 2 years, and smoking status at baseline. A p value < 0.05 was considered to be statistically significant.

Results

A total of 29 patients had radiographic progression defined as mSASSS worsening by ≥ 2 points after 2 years; 25 patients had syndesmophyte formation/progression. The intraclass correlation coefficient (ICC) between the two readers of the X-rays was good: the ICC was 0.96 for baseline and 0.95 for year-2 X-rays; the ICC for change in the mSASSS was 0.50 [23].

Adipokine serum levels in patients with and without radiographic spinal progression are presented in Table 2. There were significant differences between progressors and non-progressors in the baseline serum levels of leptin and HMW-APN (and to a further extent in the HMW-APN/APN ratio). Therefore, these adipokines were included in the subsequent analysis.

HMW-APN serum levels did not differ between the two treatment arms (NSAIDs continuously vs. on demand) at baseline and after 2 years of follow up; there was, however, a difference in the leptin levels at baseline (but not at year 2): 13.6 ± 13.2 ng/mL in the continuous intake group vs. 15.5 ± 12.6 ng/mL in the on-demand group, $p = 0.046$. Overall, there was an increase in the leptin level after 2 years in both treatment groups (continuous vs. on-demand NSAIDs); this was statistically significant in the continuous treatment group only: increase of 13.6 ± 13.2 ng/ml to 15.6 ± 15.6 ng/mL, $p = 0.002$. However, in the ANCOVA, there was no statistically significant difference in the change in the leptin serum level: increase of 2.0 ± 4.84 ng/mL in the continuous vs. 1.26 ± 7.43 ng/mL in the on-demand group, $p = 0.405$, adjusted for baseline leptin. Further, there was no

Table 2 Levels of adipokines in patients with AS with and without radiographic spinal progression after 2 years

Adipokine	mSASSS progression ≥ 2 points (n = 29)	No mSASSS progression ≥ 2 points (n = 91)	P^a	Syndesmophyte formation/ progression (n = 25)	No new syndesmophyte formation/progression (n = 95)	P^a
<i>Baseline</i>						
Leptin, ng/mL	10.5 \pm 9.0	16.4 \pm 13.7	0.003	10.2 \pm 9.6	16.2 \pm 13.4	0.003
APN, μ g/mL	10.1 \pm 4.8	10.7 \pm 4.4	0.366	9.5 \pm 3.7	10.8 \pm 4.6	0.210
HMW-APN, μ g/mL	4.95 \pm 3.52	6.35 \pm 4.15	0.045	4.53 \pm 2.86	6.40 \pm 4.22	0.026
Lipocalin-2, ng/mL	308.4 \pm 424.8	197.1 \pm 188.8	0.668	257.9 \pm 361.3	215.1 \pm 238.9	0.851
Chemerin, ng/mL	211.5 \pm 54.2	222.6 \pm 53.6	0.356	223.4 \pm 57.8	219 \pm 52.9	0.831
Omentin, ng/mL	455.1 \pm 168.3	425.8 \pm 131.7	0.477	477.8 \pm 164.7	421 \pm 132.8	0.122
Resistin, ng/mL	37.7 \pm 27.9	30.4 \pm 25.3	0.098	35.6 \pm 25.4	31.3 \pm 26.2	0.161
Visfatin, ng/mL	44.7 \pm 80.3	42.2 \pm 58.9	0.484	39.98 \pm 83.4	43.4 \pm 58.7	0.151
<i>Year 2</i>						
Leptin, ng/mL	13.4 \pm 12.8	17.5 \pm 16.0	0.044	11.7 \pm 9.8	17.7 \pm 16.3	0.032
APN, μ g/mL	9.1 \pm 3.8	11.0 \pm 5.9	0.129	8.6 \pm 3.6	11.1 \pm 5.8	0.029
HMW-APN, μ g/mL	5.06 \pm 3.31	5.99 \pm 3.88	0.185	4.55 \pm 2.8	6.08 \pm 3.92	0.071
Lipocalin-2, ng/mL	235 \pm 229.3	273 \pm 311.1	0.762	194.7 \pm 160.3	281.8 \pm 316.7	0.613
Chemerin, ng/mL	216.2 \pm 60.3	213 \pm 56.7	0.990	218 \pm 61.9	212.6 \pm 56.4	0.893
Omentin, ng/mL	444.7 \pm 133.6	426.4 \pm 134.6	0.359	452 \pm 139.9	425.3 \pm 132.6	0.268
Resistin, ng/mL	47.4 \pm 84.3	62.4 \pm 204.8	0.332	49.8 \pm 91	61.1 \pm 200.4	0.500
Visfatin, ng/mL	43.6 \pm 70	42.6 \pm 62.3	0.627	43.9 \pm 75.2	42.6 \pm 61.2	0.499

AS ankylosing spondylitis, APN adiponectin, HMW-APN high molecular weight adiponectin, mSASSS modified Stoke Ankylosing Spondylitis Spine Score.

^aMann-Whitney U test

significant association between change in leptin and HMW-APN (or the BMI-corrected values) over 2 years and radiographic spinal progression. Treatment had no effect on the levels of other adipokines.

There was no evidence of association between radiographic spinal progression and BMI in this patient population: BMI at baseline was 26.9 \pm 4.1 kg/m² vs. 27.4 \pm 5.6 kg/m² in patients with and without mSASSS worsening by ≥ 2 points, respectively, $p = 0.93$, and 28.1 \pm 6.6 kg/m² vs. 27.1 \pm 4.9 kg/m² in patients with and without syndesmophytes formation respectively, $p = 0.58$.

There was no meaningful correlation between leptin and HMW-APN serum levels, and no correlation with serum CRP. In the ROC analysis, baseline serum leptin, the leptin/BMI ratio, serum HMW-APN, the HMW-APN/BMI ratio, and the HMW-APN/APN ratio were good predictors of no mSASSS progression ≥ 2 points and of no syndesmophyte formation/progression (Fig. 1). Leptin and the leptin/BMI ratio was generally a slightly better predictor as compared to HMW-APN.

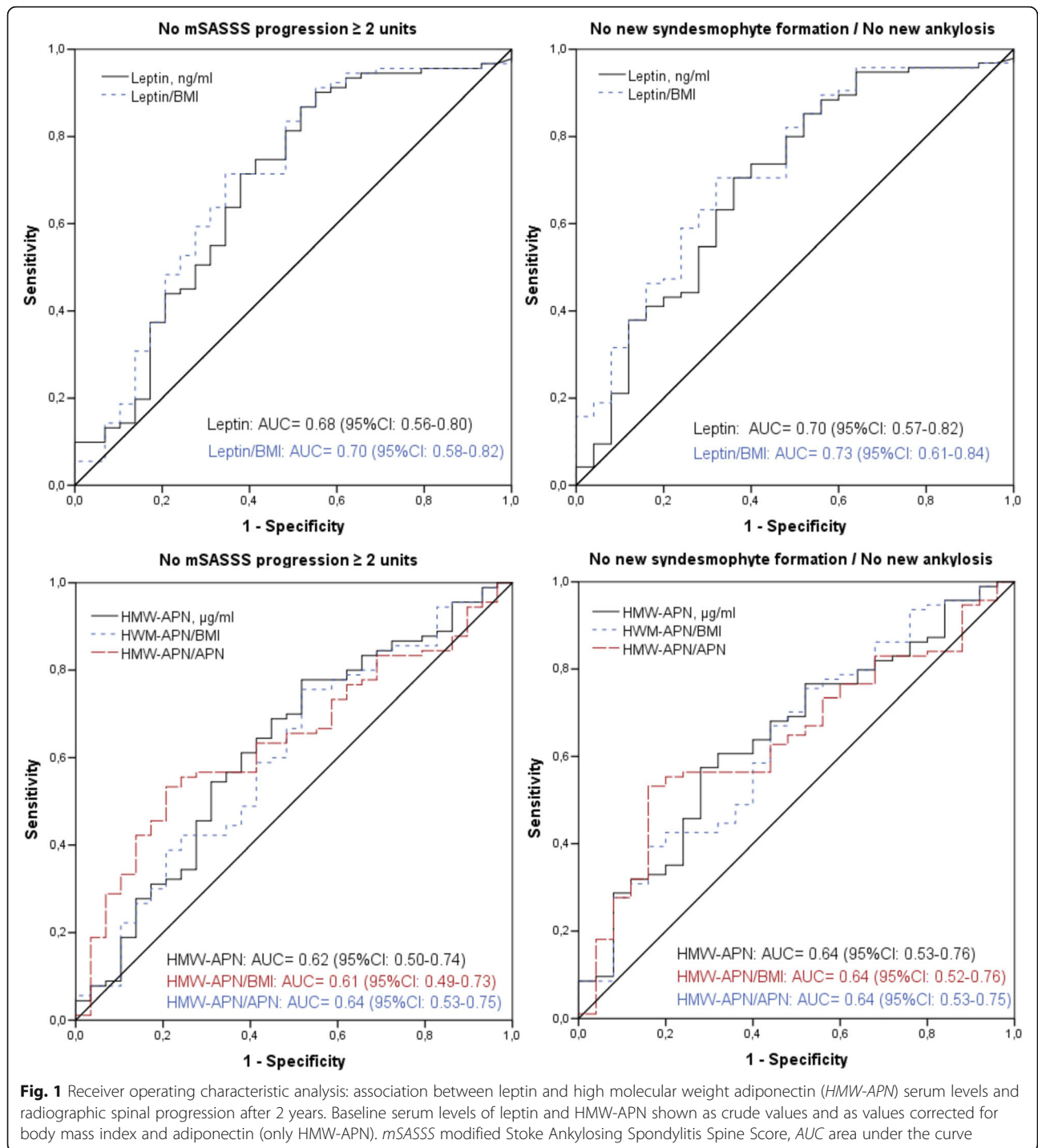
Remarkably, male patients with AS had significantly lower levels of leptin and HMW-APN (and BMI-adjusted values and HMW-APN/APN ratio) compared to women (Table 3). In the analysis stratified by sex, the association between lower leptin and HMW-APN levels and radiographic spinal progression was evident in men only (Table 4). Furthermore, women had significantly

lower mSASSS at baseline and after 2 years of follow up compared to men (7.9 \pm 12.6 vs. 16.2 \pm 18.2, respectively, $p = 0.015$ at baseline and 8.6 \pm 12.9 vs. 17.4 \pm 19.0, respectively, $p = 0.011$ after 2 years of follow up).

We further explored an association between leptin or HMW-APN and radiographic spinal progression in the logistic regression analysis (Table 5). Serum leptin and the leptin/BMI ratio were significantly inversely associated with radiographic spinal progression; this remained significant after adjusting for factors considered as confounders. The same trend was observed for HMW-APN (crude and BMI-adjusted levels), but this was not statistically significant. However, the HMW-APN/APN ratio was inversely associated with radiographic spinal progression in the logistic regression analysis (Table 5). Similar to the data presented in Table 4, the association between serum adipokines levels and radiographic spinal progression was evident in men but not in women when analyzed separately (Table 6).

Discussion

In the current study we investigated the association between serum adipokines and radiographic spinal progression in patients with AS. We report for the first time that baseline leptin and HMW-APN serum levels, and to a further extent the HMW-APN/APN ratio were inversely associated with (i.e., predicted protection against)



radiographic spinal progression. Initially, we investigated eight adipokines and only those with evidence suggesting an association with radiographic progression were entered the main analysis. We have chosen the homogeneous population of the ENRADAS trial consisting of patients with advanced AS. The lack of differences in radiographic spinal progression between the study arms justified pooling both groups of patients (treated with

NSAIDs continuously or on demand). However, due to some change in the leptin level over 2 years that was especially evident in the continuous treatment group, the parameter estimates in the regression analysis were adjusted for NSAID intake.

In the study population, leptin and HMW-APN levels were higher in female patients with AS compared to male patients, even after adjustment for BMI. At the

Table 3 Sex-related differences in serum leptin and high molecular weight adiponectin at baseline

	Males (n = 82)	Females (n = 38)	<i>P</i> ^a
Leptin, ng/mL	10.6 ± 6.9	24.4 ± 17.3	<0.001
Leptin/BMI	0.37 ± 0.19	0.84 ± 0.47	<0.001
HMW-APN, µg/mL	5.07 ± 3.06	8.04 ± 5.07	<0.001
HMW-APN/BMI	0.19 ± 0.13	0.32 ± 0.23	0.001
HMW-APN/APN	0.52 ± 0.23	0.61 ± 0.22	0.020

APN adiponectin, HMW-APN high molecular weight adiponectin, BMI body mass index. ^aMann-Whitney *U* test

same time, there was no association between BMI and radiographic spinal progression. There are data on gender-dependent differences in adipokine levels in the general population [29, 30]. In one study, leptin and APN levels were higher in women than in men independent of BMI or waist-to-hip ratio [29], while in another study such an association was shown for leptin, but not for adiponectin [30]. Similarly, differences in adipokine levels between male and female patients have also been described in patients with AS [17, 31]. Such an association between sex and adipokine levels is especially interesting in the context of the current study, since the women in our study also had significantly lower mSASSS scores than men. It has been shown several times that female patients with AS develop new bone formation to a lesser extent than male patients with AS [5, 20]. Therefore, we can speculate that leptin and HMW-APN might be biomarkers (or even pathophysiological

factors) linking gender with radiographic spinal progression in patients with AS.

Remarkably, in the analyses stratified by sex, an association between adipokines and radiographic spinal progression was evident in male patients only. On the one hand, the absence of association between serum adipokine and radiographic spinal progression in female patients could be related to the smaller sample size and a small number of progressors in the female group. On the other hand, female patients had generally higher levels of leptin and adiponectin in comparison to male patients, suggesting that in female patients who progressed after 2 years, there could have been other factors playing a part.

In our previous study involving patients from the German Spondyloarthritis Inception Cohort (GES-PIC) cohort, who had early axial SpA, we found a positive association between visfatin and radiographic spinal progression; leptin and HMW-APN were not investigated [17]. In the current study, we found only a trend for such an association for visfatin that might be related to the differences in disease duration in the GESPIC (early disease) and ENRADAS (rather advanced disease) studies or to the test system used.

Until now, serum adipokines and their relationship to clinical or radiographic parameters in AS have only been investigated in a few small trials. In some studies, leptin serum was found to be lower in patients with AS compared to healthy controls [32–34], but in others there were either no differences or even higher leptin serum

Table 4 Baseline serum leptin and HMW-APN in relation to radiographic spinal progression after 2 years

	All patients (n = 120)			Male patients (n = 82)			Female patients (n = 38)		
	Progressors (n = 29)	Non-progressors (n = 91)	<i>p</i> ^a	Progressors (n = 22)	Non-progressors (n = 60)	<i>p</i> ^a	Progressors (n = 7)	Non-progressors (n = 31)	<i>p</i> ^a
Outcome: mSASSS progression ≥2 points after 2 years									
Leptin, ng/mL	10.5 ± 9.0	16.4 ± 13.7	0.003	7.0 ± 4.7	11.9 ± 7.1	0.001	21.7 ± 10.5	25.0 ± 18.6	0.96
Leptin/BMI	0.38 ± 0.31	0.57 ± 0.38	0.001	0.25 ± 0.14	0.42 ± 0.19	<0.001	0.78 ± 0.35	0.86 ± 0.49	0.84
HMW-APN, µg/mL	4.95 ± 3.52	6.35 ± 4.15	0.045	3.93 ± 2.56	5.49 ± 3.15	0.018	8.16 ± 4.37	8.02 ± 5.27	0.75
HMW-APN/BMI	0.19 ± 0.14	0.25 ± 0.19	0.089	0.15 ± 0.11	0.21 ± 0.13	0.052	0.32 ± 0.18	0.33 ± 0.24	0.84
HMW-APN/APN	0.47 ± 0.19	0.57 ± 0.23	0.024	0.42 ± 0.14	0.56 ± 0.24	0.033	0.62 ± 0.25	0.60 ± 0.22	0.82
Outcome: syndesmophyte formation/progression after 2 years									
Leptin, ng/mL	10.2 ± 9.6	16.2 ± 13.4	0.003	9.0 ± 9.1	11.1 ± 5.9	0.018	16.4 ± 10.9	25.3 ± 17.8	0.27
Leptin/BMI	0.33 ± 0.22	0.57 ± 0.39	0.001	0.29 ± 0.19	0.40 ± 0.18	0.006	0.56 ± 0.23	0.88 ± 0.48	0.13
HMW-APN, µg/mL	4.53 ± 2.86	6.4 ± 4.22	0.026	4.1 ± 2.58	5.4 ± 3.17	0.075	6.8 ± 3.6	8.2 ± 5.23	0.85
HMW-APN/BMI	0.18 ± 0.13	0.25 ± 0.19	0.035	0.16 ± 0.11	0.21 ± 0.13	0.081	0.28 ± 0.18	0.33 ± 0.24	0.81
HMW-APN/APN	0.46 ± 0.2	0.57 ± 0.23	0.033	0.42 ± 0.15	0.55 ± 0.24	0.057	0.68 ± 0.32	0.60 ± 0.21	0.81

APN adiponectin, HMW-APN high molecular weight adiponectin, BMI body mass index, mSASSS modified Stoke Ankylosing Spondylitis Spine Score.

^aMann-Whitney *U* test

Table 5 Analysis of the association of leptin and HMW-APN with radiographic spinal progression after 2 years

	OR unadjusted	95% CI	OR adjusted ^a	95% CI
<i>Outcome: no mSASSS progression after 2 years (logistic regression)</i>				
Leptin, ng/mL	1.06	1.003 to 1.12	1.16	1.03 to 1.29
Leptin/BMI	9.20	1.44 to 58.7	28.7	2.24 to 367.7
HMW-APN, μ g/mL	1.12	0.98 to 1.27	1.17	0.99 to 1.38
HMW-APN/BMI	9.68	0.48 to 196.2	10.7	0.35 to 320.6
HMW-APN/APN	10.81	1.25 to 93.5	22.2	1.57 to 313.1
<i>Outcome: no syndesmophyte formation/progression after 2 years (logistic regression)</i>				
Leptin, ng/mL	1.07	1.002 to 1.14	1.29	1.11 to 1.50
Leptin/BMI	36.5	3.29 to 404.5	131.9	4.78 to 3638
HMW-APN, μ g/mL	1.18	1.01 to 1.39	1.18	0.98 to 1.42
HMW-APN/BMI	34.3	0.89 to 1319	23.8	0.41 to 1382
HMW-APN/APN	10.9	1.11 to 106.3	10.8	0.74 to 156.1

^aAdjusted for the presence of syndesmophytes at baseline, C-reactive protein at baseline, sex, non-steroidal anti-inflammatory drugs intake score over 2 years, and smoking status at baseline. Models with leptin, HMW-APN and HMW-APN/APN ratio were additionally adjusted for body mass index (BMI). APN adiponectin, CI confidence interval, HMW-APN high molecular weight adiponectin, mSASSS modified Stoke Ankylosing Spondylitis Spine Score, OR odds ratio

levels in patients with AS [35–37]. A meta-analysis from Mei et al, which included eight studies that had compared leptin levels in patients with AS with those in healthy controls, came to the conclusion that there are no significant differences in leptin levels in patients with AS vs. controls [38]. Differences in serum APN (including the HMW isoform) have also not been identified at group level in patients with AS and healthy controls [17, 32, 34]. However, in one study serum APN was higher in male patients with AS versus healthy controls, and at the same time there was almost no correlation between leptin or APN and inflammatory activity, and anti-inflammatory treatment (anti-TNF- α) did not have an effect on serum leptin and APN [35].

Data on the association between structural damage in the spine and leptin in AS are very limited. In one study, higher serum leptin was positively associated with the presence of syndesmophytes in a cross-sectional analysis; however, no prospective data were reported [36]. In the aforementioned study of patients with early axial SpA, APN was only numerically higher in non-progressors, but the HMW isoform was not investigated [17].

What are the possible mechanisms linking leptin and adiponectin with radiographic spinal progression in AS? Adipokines are known to be involved in the regulation of immune processes, displaying both pro-inflammatory and anti-inflammatory effects, and in bone metabolism that explains their possible relationship with the pathophysiology of chronic inflammatory conditions such as rheumatoid arthritis or AS [21, 22, 39]. Our current observation of a protective effect of leptin and APN (especially its HMW

isoform) against radiographic spinal progression in AS can probably be best explained by the effects of both molecules on the process of osteogenesis, since there is no association between adipokines and inflammatory activity as measured by CRP.

Many studies have previously assessed the part played by leptin in bone metabolism; however, published data show both positive and negative effects of leptin on bone formation [40]. Two main regulatory pathways are currently discussed. One targets the central nervous system, the other one acts through peripheral regulation [41]. The peripheral effect is based on a rather direct interaction of leptin with several bone cell types. For instance, leptin enhances new bone formation through interaction with bone marrow stem cells, which can either differentiate into osteoblasts or into adipocytes. It promotes differentiation and growth of osteoblasts and enhances bone mineralization [42–44]. Furthermore, leptin administered peripherally can inhibit formation of human osteoclasts [44, 45].

In contrast, a central regulatory effect of leptin on bone metabolism is rather anti-osteoproliferative. It has been shown that bone loss could be induced in leptin-deficient mice through an intracerebrovascular infusion of leptin [46], indicating a role of leptin as a hormone which induces pathways of the sympathetic nervous system (SNS) through the ventromedial hypothalamus (VMH), which then results in bone loss. Further studies have confirmed this theory [47, 48]. The available evidence indicates that leptin binds to its receptors on neurons of the VMH, which then activate a signal pathway from the VMH to osteoblasts via β 2 adrenergic receptors of the SNS.

Table 6 Analysis of association of leptin and HMW-APN with radiographic spinal progression stratified by sex

	OR unadjusted	95% CI	OR adjusted ^a	95% CI
Men (n = 82)				
<i>Outcome: no mSASSS progression ≥ 2 points after 2 years (logistic regression)</i>				
Leptin, ng/mL	1.20	1.06 to 1.36	1.45	1.18 to 1.78
Leptin/BMI	725.2	15.4 to 34099	4818.9	33.3 to 698123
HMW-APN $\mu\text{g/mL}$	1.25	1.002 to 1.57	1.35	1.04 to 1.75
HMW-APN/BMI	81.8	0.53 to 12683	186.4	0.63 to 54915
HMW-APN/APN	40.5	2.01 to 813.9	173.6	4.03 to 7479
<i>Outcome: no syndesmophyte formation/progression after 2 years (logistic regression)</i>				
Leptin, ng/mL	1.06	0.97 to 1.16	1.34	1.11 to 1.62
Leptin/BMI	54.5	1.99 to 1491	241.8	3.51 to 16651
HMW-APN, $\mu\text{g/mL}$	1.20	0.97 to 1.48	1.21	0.95 to 1.53
HMW-APN/BMI	55.3	0.37 to 8262	77.9	0.32 to 19249
HMW-APN/APN	31.5	1.60 to 621.5	55.6	1.56 to 1973
Women (n = 38)				
<i>Outcome: no mSASSS progression ≥ 2 points after 2 years (logistic regression)</i>				
Leptin, ng/mL	1.01	0.96 to 1.07	1.04	0.95 to 1.14
Leptin/BMI	1.53	0.21 to 11.29	1.67	0.15 to 18.8
HMW-APN, $\mu\text{g/mL}$	0.99	0.85 to 1.17	1.04	0.85 to 1.27
HMW-APN/BMI	1.22	0.03 to 48.9	3.03	0.05 to 196.9
HMW-APN/APN	0.69	0.02 to 30.4	0.47	0.003 to 68.6
<i>Outcome: no syndesmophyte formation/progression after 2 years (logistic regression)</i>				
Leptin, ng/mL	1.05	0.95 to 1.16	1.17	0.90 to 1.51
Leptin/BMI	20.5	0.23 to 1872	18.7	0.06 to 5989
HMW-APN, $\mu\text{g/mL}$	1.07	0.83 to 1.38	1.13	0.84 to 1.51
HMW-APN/BMI	3.48	0.02 to 738.3	14.8	0.03 to 7869
HMW-APN/APN	0.15	0.001 to 21.4	0.15	0.0004 to 59.5

^aAdjusted for the presence of syndesmophytes at baseline, C-reactive protein at baseline, non-steroidal anti-inflammatory drugs intake score over two years, and smoking status at baseline. Models with leptin, high molecular weight adiponectin (HMW-APN) and HMW-APN/adiponectin (APN) ratio were additionally adjusted for body mass index (BMI). *CI* confidence interval, *mSASSS* modified Stoke Ankylosing Spondylitis Spine Score, *OR* odds ratio

Through the signals of the SNS two cascades in osteoblasts are activated leading to increased osteoclast formation and decreased osteoblast differentiation [41].

Hamrick et al. proved in 2004 that the effects of leptin on the skeleton differ between skeletal regions. Comparing leptin-deficient obese mice (*ob/ob*) with lean mice they found that *ob/ob* mice had significantly reduced femoral bone mineral density (BMD), bone mineral content (BMC), cortical thickness and trabecular bone volume compared to lean mice. On the other hand, they found *ob/ob* mice to have higher BMC, BMD and trabecular bone volume in the lumbar spine than the lean mice. Hence, their study suggests that leptin regulates bone metabolism differently according to the location within the skeleton [49]. Martin et al. found in 2007 that there could be a bimodal threshold response to serum leptin levels, meaning that slight increases in leptin

might initially stimulate bone formation, while higher leptin levels inhibit bone formation [50].

Thus, leptin might have contradictory effects on bone metabolism that also depend on the localization of the bone. We hypothesize that in patients with AS a higher level of leptin has protective properties against radiographic spinal progression mainly via the central pathway with inhibition of excessive new bone formation.

As for APN, different effects on bone metabolism have been discovered as well, yielding similarly conflicting results. APN was found to be expressed in osteoblasts along with its receptors and to stimulate their proliferation and differentiation, for example, through enhancement of the expression of bone morphogenetic protein 2 (BMP-2) [51–53]. Additionally, APN was found to be able to suppress osteoclastogenesis and promote osteoblastogenesis [54]. However, APN is also able to

indirectly activate osteoclasts by stimulating receptor activator of nuclear factor kappa-B (NFκB) ligand (RANKL) and inhibiting osteoprotegerin (OPG) production in osteoblasts, which are known to be essential stimulators of osteoclastogenesis [55].

An inverse relationship between APN and BMD was found in vivo in a number of studies [39] indicating that APN might have predominantly catabolic effects on bone. In line with this, the meta-analysis of Biver et al., which included 59 studies of healthy male and female patients who were evaluated for BMD or fracture risk and adipokines, showed that APN seems to be the most important adipokine that is negatively associated with BMD [56].

There are two main circulating isoforms of APN in the blood stream: one low molecular weight (LMW) hexamer and the HMW multimer [28, 57]. Previous data suggest that HMW-APN might be the predominantly active isoform and that the HMW-APN/APN ratio might be an important determinant of the metabolic effects of the hormone [28]. The importance of the HMW-APN/APN ratio was also confirmed in another study, in which the ratio was a better predictor of insulin resistance and metabolic syndrome than total plasma APN [58]. In line with these data, we found that HMW-APN (and to a further extent the HMW-APN/APN ratio) was inversely associated with radiographic spinal progression in AS, and the association between radiographic progression and HMW-APN was better than that between radiographic progression and total APN.

Our study has limitations. First, this was an analysis based on a population of a randomized controlled trial. Although we corrected our analysis for differences in the intervention, we cannot completely exclude bias resulting from treatment. Further, only relatively few women were included in this trial, which made the interpretation of the subgroup analysis results difficult in this population. Also, no fat mass measurement was performed in the ENRADAS trial beyond BMI calculation. Finally, since no biologic agents were allowed in the ENRADAS trial it is currently unclear whether leptin and HMW-APN might also have protective effects against radiographic spinal progression in patients treated with anti-TNF or anti-interleukin-17 drugs. Therefore, an independent validation of our results is highly desirable not only in patients treated with NSAIDs but also in patients undergoing biologic treatment. Despite a significant association with radiographic spinal progression, leptin or HMW-APN alone would not be sufficient for identification of patients at high (or low) risk of radiographic spinal progression. However, these biomarkers seem to be good candidates for inclusion in multi-parameter predictive models for estimation of the risk of radiographic spinal progression in AS.

Conclusion

Serum levels of leptin and HMW-APN are inversely associated with radiographic spinal progression in patients with AS. Current data on the role of adipokines in bone metabolism indicates that leptin and HMW-APN might not only be markers but also true pathophysiological factors influencing new bone formation in AS. Female patients with AS have a higher level of leptin and APN, which might play a natural protective role against radiographic spinal progression in AS, explaining the generally lower prevalence of extended new bone formation in the spine in female patients with AS.

Abbreviations

ANCOVA: Analysis of covariance; APN: Adiponectin; AS: Ankylosing spondylitis; ASDAS: Ankylosing Spondylitis Disease Activity Score; BMC: Bone mineral content; BMD: Bone mineral density; BMI: Body mass index; BMP-2: Bone morphogenetic protein 2; CRP: C-reactive protein; ELISA: Enzyme-linked immunosorbent assays; ENRADAS: Effects of NSAIDs on radiographic damage in AS; GESPIC: German spondyloarthritis inception cohort; HMW-APN: High molecular weight adiponectin; LMW: Low molecular weight; MRI: Magnetic resonance imaging; mSASSS: Modified Stoke Ankylosing Spondylitis spine score; NFκB: Nuclear factor kappa B; NSAIDs: Non-steroidal anti-inflammatory drugs; OPG: Osteoprotegerin; RANKL: Receptor activator of NFκB ligand; ROC: Receiver operating characteristic; SNS: Sympathetic nervous system; SpA: Spondyloarthritis; TNF: Tumor necrosis factor; VMH: Ventromedial hypothalamus

Acknowledgements

We would like to thank the participating patients and study centers: PD Dr. J. Brandt-Jürgens, Berlin; Prof. Dr. J. Braun, Herne; Dr. K. Karberg, Berlin; Dr. S. Jacki, Tübingen; Dr. N. Rinaldi, Ulm; Prof. K. Manger, Bamberg; Dr. W. Ochs, Bayreuth; Prof. H. Kellner, München; Dr. K-H. Göttl, Passau; Dr. R. Dockhorn, Weener; Dr. U. Schoo, Rheine; Dr. F. Heldmann, Herne; Dr. D. Pick, Graftschaft Bad Neuenahr-Ahrweiler; Dr. A. Gräßler, Pirna; Dr. C. Kühne, Haldensleben, Dr. F. Mielke, Berlin, Dr. T. Schneider-Stiebler, Wismar, Prof. C. Kneitz, Rostock. We thank Dr. In-Ho Song who was actively involved in the preparation and the initial phase of the study. Special thanks to Renate Lies and Beate Buss who coordinated the trial. We would also like to thank the external members of the Data and Safety Monitoring Board (DSMB) Prof. Désirée van der Heijde, Leiden, The Netherlands, Prof. Bernhard Manger, Erlangen, Germany, and Dr. Wolfgang Bolten, Wiesbaden, for their expert advice. We further appreciate the data management and statistical support from Dr. Johanna Callhoff. Finally, we would like to thank Torsten Karge (Clinical Guideline Service, Hamburg, Germany) for establishing the scoring interface for the reading of images.

Funding

This ENRADAS trial was funded by the German Ministry of Education and Research (Bundesministerium für Bildung und Forschung - BMBF), grant number: FKZ 01KG0801. The biomarker analysis was conducted as a part of METARTHROS (grant number FKZ 01EC1407A) and ArthroMark (FKZ 01EC1401A) projects funded by BMBF; additional support was obtained from the clinical research unit (CRU) of the Berlin Institute of Health (BIH). The initial study drug diclofenac was provided by Novartis as a donation.

Availability of data and materials

The data supporting the findings of this study are available from Prof. Dr. Denis Poddubnyy upon reasonable request.

Authors' contributions

AH: design of the adipokine substudy, acquisition of data, statistical analysis and interpretation of the results, and drafting the manuscript. JS, MR: conception and design of the ENRADAS study, data acquisition, analysis and interpretation of the data, and revising the manuscript. US: data acquisition, analysis and interpretation of the data, and revising of the manuscript. JL:

conception and design of the ENRADAS study, analysis and interpretation of the data, and revising the manuscript. KGH: data acquisition, analysis and interpretation of the data, and revising the manuscript. DP: conception and design of the adipokine substudy, data acquisition, analysis and interpretation of the data, and drafting the manuscript. The final version of the manuscript to be published was approved by all authors.

Competing interests

The authors declare no competing interests. The study drug diclofenac was provided by Novartis, but Novartis did not have any influence on the design, conduct and analysis of the trial.

Consent for publication

Not applicable.

Ethics approval and consent to participate

The ENRADAS study was approved by the central ethics committee in Berlin (Ethikkommission des Landes Berlin, Landesamt für Gesundheit und Soziales) and by local ethics committees of participating centers (listed in the supplement). Informed consent was obtained from all participating patients.

Publisher's Note

Springer Nature remains neutral with regard to jurisdictional claims in published maps and institutional affiliations.

Author details

¹Department of Gastroenterology, Infectiology and Rheumatology, Charité Universitätsmedizin Berlin, Hindenburgdamm 30, 12203 Berlin, Germany. ²German Rheumatism Research Centre, Charitéplatz 1, 10117 Berlin, Germany. ³Department of Radiology, Charité Universitätsmedizin Berlin, Charitéplatz 1, 10117 Berlin, Germany. ⁴Klinikum Bielefeld Rosenhöhe, An der Rosenhöhe 27, 33647 Bielefeld, Germany.

Received: 19 December 2016 Accepted: 26 May 2017

Published online: 15 June 2017

References

- van Tubergen A, Ramiro S, van der Heijde D, Dougados M, Mielants H, Landewe R. Development of new syndesmophytes and bridges in ankylosing spondylitis and their predictors: a longitudinal study. *Ann Rheum Dis.* 2012;71(4):518–23.
- Landewe R, Dougados M, Mielants H, van der Tempel H, van der Heijde D. Physical function in ankylosing spondylitis is independently determined by both disease activity and radiographic damage of the spine. *Ann Rheum Dis.* 2009;68(6):863–7.
- Machado P, Landewe R, Braun J, Hermann KG, Baker D, van der Heijde D. Both structural damage and inflammation of the spine contribute to impairment of spinal mobility in patients with ankylosing spondylitis. *Ann Rheum Dis.* 2010;69(8):1465–70.
- Baraliakos X, Listing J, von der Recke A, Braun J. The natural course of radiographic progression in ankylosing spondylitis—evidence for major individual variations in a large proportion of patients. *J Rheumatol.* 2009;36(5):997–1002.
- Ramiro S, Stolwijk C, van Tubergen A, van der Heijde D, Dougados M, van den Bosch F, et al. Evolution of radiographic damage in ankylosing spondylitis: a 12 year prospective follow-up of the OASIS study. *Ann Rheum Dis.* 2015;74(1):52–9.
- Ramiro S, van der Heijde D, van Tubergen A, Stolwijk C, Dougados M, van den Bosch F, et al. Higher disease activity leads to more structural damage in the spine in ankylosing spondylitis: 12-year longitudinal data from the OASIS cohort. *Ann Rheum Dis.* 2014;73(8):1455–61.
- Poddubnyy D, Haibel H, Listing J, Marker-Hermann E, Zeidler H, Braun J, et al. Baseline radiographic damage, elevated acute-phase reactant levels, and cigarette smoking status predict spinal radiographic progression in early axial spondylarthritis. *Arthritis Rheum.* 2012;64(5):1388–98.
- Poddubnyy D, Protopopov M, Haibel H, Braun J, Rudwaleit M, Sieper J. High disease activity according to the Ankylosing Spondylitis Disease Activity Score is associated with accelerated radiographic spinal progression in patients with early axial spondyloarthritis: results from the GERman SPondyloarthritis Inception Cohort. *Ann Rheum Dis.* 2016;75(12):2114–8.
- Baraliakos X, Listing J, Rudwaleit M, Sieper J, Braun J. The relationship between inflammation and new bone formation in patients with ankylosing spondylitis. *Arthritis Res Ther.* 2008;10(5):R104.
- van der Heijde D, Machado P, Braun J, Hermann KG, Baraliakos X, Hsu B, et al. MRI inflammation at the vertebral unit only marginally predicts new syndesmophyte formation: a multilevel analysis in patients with ankylosing spondylitis. *Ann Rheum Dis.* 2012;71(3):369–73.
- Baraliakos X, Heldmann F, Callhoff J, Listing J, Appelboom T, Brandt J, et al. Which spinal lesions are associated with new bone formation in patients with ankylosing spondylitis treated with anti-TNF agents? A long-term observational study using MRI and conventional radiography. *Ann Rheum Dis.* 2014;73(10):1819–25.
- Machado PM, Baraliakos X, van der Heijde D, Braun J, Landewe R. MRI vertebral corner inflammation followed by fat deposition is the strongest contributor to the development of new bone at the same vertebral corner: a multilevel longitudinal analysis in patients with ankylosing spondylitis. *Ann Rheum Dis.* 2016;75(8):1486–93.
- Poddubnyy D, Haibel H, Listing J, Marker-Hermann E, Zeidler H, Braun J, et al. Cigarette smoking has a dose-dependent impact on progression of structural damage in the spine in patients with axial spondyloarthritis: results from the GERman SPondyloarthritis Inception Cohort (GESPIC). *Ann Rheum Dis.* 2013;72(8):1430–2.
- Maksymowych WP, Landewe R, Conner-Spady B, Dougados M, Mielants H, van der Tempel H, et al. Serum matrix metalloproteinase 3 is an independent predictor of structural damage progression in patients with ankylosing spondylitis. *Arthritis Rheum.* 2007;56(6):1846–53.
- Poddubnyy D, Conrad K, Haibel H, Syrbe U, Appel H, Braun J, et al. Elevated serum level of the vascular endothelial growth factor predicts radiographic spinal progression in patients with axial spondyloarthritis. *Ann Rheum Dis.* 2014;73(12):2137–43.
- Turina MC, Sieper J, Yeremenko N, Conrad K, Haibel H, Rudwaleit M, et al. Calprotectin serum level is an independent marker for radiographic spinal progression in axial spondyloarthritis. *Ann Rheum Dis.* 2014;73(9):1746–8.
- Syrbe U, Callhoff J, Conrad K, Poddubnyy D, Haibel H, Junker S, et al. Serum adipokine levels in patients with ankylosing spondylitis and their relationship to clinical parameters and radiographic spinal progression. *Arthritis Rheumatol.* 2015;67(3):678–85.
- Appel H, Ruiz-Heiland G, Listing J, Zwerina J, Herrmann M, Mueller R, et al. Altered skeletal expression of sclerostin and its link to radiographic progression in ankylosing spondylitis. *Arthritis Rheum.* 2009;60(11):3257–62.
- Heiland GR, Appel H, Poddubnyy D, Zwerina J, Hueber A, Haibel H, et al. High level of functional dickkopf-1 predicts protection from syndesmophyte formation in patients with ankylosing spondylitis. *Ann Rheum Dis.* 2012;71(4):572–4.
- Feldtkeller E, Bruckel J, Khan MA. Scientific contributions of ankylosing spondylitis patient advocacy groups. *Curr Opin Rheumatol.* 2000;12(4):239–47.
- Ouchi N, Parker JL, Lugus JJ, Walsh K. Adipokines in inflammation and metabolic disease. *Nat Rev Immunol.* 2011;11(2):85–97.
- Neumann E, Junker S, Schett G, Frommer K, Muller-Ladner U. Adipokines in bone disease. *Nat Rev Rheumatol.* 2016;12(5):296–302.
- Sieper J, Listing J, Poddubnyy D, Song IH, Hermann KG, Callhoff J, et al. Effect of continuous versus on-demand treatment of ankylosing spondylitis with diclofenac over 2 years on radiographic progression of the spine: results from a randomised multicentre trial (ENRADAS). *Ann Rheum Dis.* 2016;75(8):1438–43.
- Creemers MC, Franssen MJ, van't Hof MA, Gribnau FW, van de Putte LB, van Riel PL. Assessment of outcome in ankylosing spondylitis: an extended radiographic scoring system. *Ann Rheum Dis.* 2005;64(1):127–9.
- Abella V, Scotece M, Conde J, Lopez V, Lazzaro V, Pino J, et al. Adipokines, Metabolic Syndrome and Rheumatic Diseases. *J Immunol Res.* 2014;2014:343746.
- Neumann E, Frommer KW, Vasile M, Muller-Ladner U. Adipocytokines as driving forces in rheumatoid arthritis and related inflammatory diseases? *Arthritis Rheum.* 2011;63(5):1159–69.
- Wang Y, Lam KS, Kraegen EW, Sweeney G, Zhang J, Tso AW, et al. Lipocalin-2 is an inflammatory marker closely associated with obesity, insulin resistance, and hyperglycemia in humans. *Clin Chem.* 2007;53(1):34–41.

28. Pajvani UB, Hawkins M, Combs TP, Rajala MW, Doebber T, Berger JP, et al. Complex distribution, not absolute amount of adiponectin, correlates with thiazolidinedione-mediated improvement in insulin sensitivity. *J Biol Chem.* 2004;279(13):12152–62.
29. Andreasson AN, Uden AL, Elofsson S, Brismar K. Leptin and adiponectin: distribution and associations with cardiovascular risk factors in men and women of the general population. *Am J Hum Biol.* 2012;24(5):595–601.
30. Lew J, Sanghavi M, Ayers CR, McGuire DK, Omland T, Atzler D, et al. Sex-based differences in cardiometabolic biomarkers. *Circulation.* 2017; 135(6):544–55.
31. Miranda-Fillooy JA, Lopez-Mejias R, Genre F, Carnero-Lopez B, Ochoa R, Diaz de Teran T, et al. Leptin and visfatin serum levels in non-diabetic ankylosing spondylitis patients undergoing TNF-alpha antagonist therapy. *Clin Exp Rheumatol.* 2013;31(4):538–45.
32. Toussiot E, Streit G, Nguyen NU, Dumoulin G, Le Huede G, Saas P, et al. Adipose tissue, serum adipokines, and ghrelin in patients with ankylosing spondylitis. *Metabolism.* 2007;56(10):1383–9.
33. Sari I, Demir T, Kozaci LD, Akar S, Kavak T, Birlik M, et al. Body composition, insulin, and leptin levels in patients with ankylosing spondylitis. *Clin Rheumatol.* 2007;26(9):1427–32.
34. Toussiot E, Grandclement E, Gaugler B, Michel F, Wendling D, Saas P, et al. Serum adipokines and adipose tissue distribution in rheumatoid arthritis and ankylosing spondylitis. A comparative study. *Front Immunol.* 2013;4:453.
35. Derdemezis CS, Filipatos TD, Voulgari PV, Tselepis AD, Drosos AA, Kiortsis DN. Leptin and adiponectin levels in patients with ankylosing spondylitis. The effect of infliximab treatment. *Clin Exp Rheumatol.* 2010;28(6):880–3.
36. Kim KJ, Kim JY, Park SJ, Yoon H, Yoon CH, Kim WU, et al. Serum leptin levels are associated with the presence of syndesmophytes in male patients with ankylosing spondylitis. *Clin Rheumatol.* 2012;31(8):1231–8.
37. Park MC, Lee SW, Choi ST, Park YB, Lee SK. Serum leptin levels correlate with interleukin-6 levels and disease activity in patients with ankylosing spondylitis. *Scand J Rheumatol.* 2007;36(2):101–6.
38. Mei YJ, Wang P, Chen LJ, Li ZJ. Plasma/serum leptin levels in patients with ankylosing spondylitis: a systematic review and meta-analysis. *Arch Med Res.* 2016;47(2):111–7.
39. Scotece M, Conde J, Abella V, Lopez V, Pino J, Lago F, et al. Bone metabolism and adipokines: are there perspectives for bone diseases drug discovery? Expert opinion on drug discovery. *May.* 2014;24:1–13.
40. Vadacca M, Margiotta DP, Navarini L, Afeltra A. Leptin in immunorheumatological diseases. *Cell Mol Immunol.* 2011;8(3):203–12.
41. Chen XX, Yang T. Roles of leptin in bone metabolism and bone diseases. *J Bone Miner Metab.* 2015;33(5):474–85.
42. Thomas T, Gori F, Khosla S, Jensen MD, Burguera B, Riggs BL. Leptin acts on human marrow stromal cells to enhance differentiation to osteoblasts and to inhibit differentiation to adipocytes. *Endocrinology.* 1999;140(4):1630–8.
43. Reseland JE, Syversen U, Bakke I, Qvigstad G, Eide LG, Hjertner O, et al. Leptin is expressed in and secreted from primary cultures of human osteoblasts and promotes bone mineralization. *J Bone Miner Res.* 2001; 16(8):1426–33.
44. Gordeladze JO, Drevon CA, Syversen U, Reseland JE. Leptin stimulates human osteoblastic cell proliferation, de novo collagen synthesis, and mineralization: Impact on differentiation markers, apoptosis, and osteoclastic signaling. *J Cell Biochem.* 2002;85(4):825–36.
45. Holloway WR, Collier FM, Aitken CJ, Myers DE, Hodge JM, Malakellis M, et al. Leptin inhibits osteoclast generation. *J Bone Miner Res.* 2002;17(2): 200–9.
46. Ducey P, Amling M, Takeda S, Priemel M, Schilling AF, Beil FT, et al. Leptin inhibits bone formation through a hypothalamic relay: a central control of bone mass. *Cell.* 2000;100(2):197–207.
47. Takeda S, Eleftheriou F, Levasseur R, Liu X, Zhao L, Parker KL, et al. Leptin regulates bone formation via the sympathetic nervous system. *Cell.* 2002; 111(3):305–17.
48. Eleftheriou F, Ahn JD, Takeda S, Starbuck M, Yang X, Liu X, et al. Leptin regulation of bone resorption by the sympathetic nervous system and CART. *Nature.* 2005;434(7032):514–20.
49. Hamrick MW, Pennington C, Newton D, Xie D, Isaacs C. Leptin deficiency produces contrasting phenotypes in bones of the limb and spine. *Bone.* 2004;34(3):376–83.
50. Martin A, David V, Malaval L, Lafage-Proust MH, Vico L, Thomas T. Opposite effects of leptin on bone metabolism: a dose-dependent balance related to energy intake and insulin-like growth factor-I pathway. *Endocrinology.* 2007; 148(7):3419–25.
51. Berner HS, Lyngstadaas SP, Spahr A, Monjo M, Thommesen L, Drevon CA, et al. Adiponectin and its receptors are expressed in bone-forming cells. *Bone.* 2004;35(4):842–9.
52. Luo XH, Guo LJ, Yuan LQ, Xie H, Zhou HD, Wu XP, et al. Adiponectin stimulates human osteoblasts proliferation and differentiation via the MAPK signaling pathway. *Exp Cell Res.* 2005;309(1):99–109.
53. Huang CY, Lee CY, Chen MY, Tsai HC, Hsu HC, Tang CH. Adiponectin increases BMP-2 expression in osteoblasts via AdipoR receptor signaling pathway. *J Cell Physiol.* 2010;224(2):475–83.
54. Oshima K, Nampei A, Matsuda M, Iwaki M, Fukuhara A, Hashimoto J, et al. Adiponectin increases bone mass by suppressing osteoclast and activating osteoblast. *Biochem Biophys Res Commun.* 2005;331(2):520–6.
55. Luo XH, Guo LJ, Xie H, Yuan LQ, Wu XP, Zhou HD, et al. Adiponectin stimulates RANKL and inhibits OPG expression in human osteoblasts through the MAPK signaling pathway. *J Bone Miner Res.* 2006;21(10): 1648–56.
56. Biver E, Salliot C, Combescurie C, Gossec L, Hardouin P, Legroux-Gerot I, et al. Influence of adipokines and ghrelin on bone mineral density and fracture risk: a systematic review and meta-analysis. *J Clin Endocrinol Metab.* 2011; 96(9):2703–13.
57. Sodi R, Hazell MJ, Durham BH, Rees C, Ranganath LR, Fraser WD. The circulating concentration and ratio of total and high molecular weight adiponectin in post-menopausal women with and without osteoporosis and its association with body mass index and biochemical markers of bone metabolism. *Clin Biochem.* 2009;42(13-14):1375–80.
58. Hara K, Horikoshi M, Yamauchi T, Yago H, Miyazaki O, Ebinuma H, et al. Measurement of the high-molecular weight form of adiponectin in plasma is useful for the prediction of insulin resistance and metabolic syndrome. *Diabetes Care.* 2006;29(6):1357–62.

Submit your next manuscript to BioMed Central and we will help you at every step:

- We accept pre-submission inquiries
- Our selector tool helps you to find the most relevant journal
- We provide round the clock customer support
- Convenient online submission
- Thorough peer review
- Inclusion in PubMed and all major indexing services
- Maximum visibility for your research

Submit your manuscript at
www.biomedcentral.com/submit



Lebenslauf

Mein Lebenslauf wird aus datenschutzrechtlichen Gründen in der elektronischen Version meiner Arbeit nicht veröffentlicht.

Publikationsliste

Originalpublikation

1. Hartl A, Sieper J, Syrbe U, Listing J, Hermann KG, Rudwaleit M, Poddubnyy D. Serum levels of leptin and high molecular weight adiponectin are inversely associated with radiographic spinal progression in patients with ankylosing spondylitis: results from the ENRADAS trial. *Arthritis research & therapy*. 2017 Jun 15; 19(1):140; (Impact Factor 2016: 4,12).

Kongressbeiträge

1. **Posterpräsentation auf dem 45. Kongress der Deutschen Gesellschaft für Rheumatologie (DGRh), Stuttgart, D, 6.-9. September 2017:**

Tietz L, Le L, Hartl A, Rudwaleit M, Sieper J, Mansmann U, Poddubnyy D
Added value of biomarkers compared to routine clinical parameters for the prediction of radiographic spinal progression in axial spondyloarthritis. Abstract SpA.07.

<http://dgrh->

kongress.de/fileadmin/media/kongress/2017/DGRh_Hauptprogramm_WEB.pdf
f. Accessed August 28, 2017.

2. **Vortrag auf dem Annual European Congress of Rheumatology EULAR 2016, London, GB, 8.-11. Juni 2016:**

Poddubnyy D, Hartl A, Hermann KG, Rudwaleit M, Sieper J. Higher serum level of leptin might be responsible for less structural damage in the spine in female patients with ankylosing spondylitis. *Annals of the rheumatic diseases*. 2016; 75 (Suppl 2):84-85. Abstract OP0080.

http://ard.bmj.com/content/annrheumdis/75/Suppl_2/84.3.full.pdf. Accessed August 28, 2017.

3. Posterpräsentation auf dem 2015 ACR/ARHP Annual Meeting, San Francisco, USA, 6.-11. November 2015:

Hartl A, Hermann KG, Song IH, Listing J, Rudwaleit M, Sieper J, Poddubnyy D. Higher serum level of leptin protects from radiographic spinal progression in patients with ankylosing spondylitis. *Arthritis and Rheumatology* 2015; 67 (suppl 10).

<http://acrabstracts.org/abstract/higher-serum-level-of-leptin-protects-from-radiographic-spinal-progression-in-patients-with-ankylosing-spondylitis/>.

Accessed August 28, 2017.

Danksagung

An erster Stelle möchte ich meinem Doktorvater Prof. Dr. Denis Poddubnyy danken. Er hat mir ermöglicht diese Arbeit unter seiner Anleitung durchzuführen und hat mir dabei über die gesamte Dauer der Studie, von der grundsätzlichen Gestaltung über die Datenerhebung und die statistische Auswertung bis hin zur Veröffentlichung der Publikation, in allen Belangen zur Seite gestanden und geduldig alle meine Rückfragen beantwortet. Ohne seine Hilfe wäre mir diese Arbeit nicht möglich gewesen!

Danke an alle Koautoren der Publikation für ihre Hilfe und Beratung und für die Zurverfügungstellung der Daten aus der ENRADAS Studie.

Auch dem gesamten Team der Rheumatologie der Charité - Campus Benjamin Franklin möchte ich danken für die freundliche Umgebung in der die Arbeit stets Spaß gemacht hat und es für alle Belange kompetente Ansprechpartner gab. Mein besonderer Dank gilt hierbei Dr. Kristina Conrad, die mich in die Durchführung und Auswertung von ELISAs eingeführt hat. Des Weiteren danke ich Peihua Wu und René Maier, sowie Dr. Janine Bleil für ihre Unterstützung bei der Laborarbeit und ihre kompetente und immer freundliche Beratung bei Unklarheiten meinerseits.

Danke auch an meine Mitdotorandin Lorraine Tietz für die gemeinsamen Gespräche und die gegenseitigen Beratungen über unsere Projekte, welche mir über so manche Hürde hinweggeholfen haben.

Im privaten Kreis möchte ich mich bei meinen Freunden und meiner Familie, die mir durch mein Studium und die Promotion hindurch sehr viel Rückhalt gegeben und mich immer unterstützt haben, bedanken. Besonders zu erwähnen sind mein Freund Gregor und meine beiden tollen Mitbewohnerinnen Hannah und Sophie, die mir über jedes Tief hinweggeholfen und mich immer wieder aufgebaut haben.

Zuletzt danke ich meinen Eltern die mir mein Medizinstudium und damit auch die Promotion überhaupt erst ermöglicht haben!