



Cite this: *Chem. Commun.*, 2016, 52, 4381

Received 3rd February 2016,
Accepted 24th February 2016

DOI: 10.1039/c6cc01114d

www.rsc.org/chemcomm

Distinguishing *N*-acetylneuraminic acid linkage isomers on glycopeptides by ion mobility-mass spectrometry†

H. Hinneburg,^{‡,ab} J. Hofmann,^{‡,bc} W. B. Struwe,^d A. Thader,^e F. Altmann,^e
D. Varón Silva,^a P. H. Seeberger,^{ab} K. Pagel^{*bc} and D. Kolarich^{*a}

Differentiating the structure of isobaric glycopeptides represents a major challenge for mass spectrometry-based characterisation techniques. Here we show that the regiochemistry of the most common *N*-acetylneuraminic acid linkages of *N*-glycans can be identified in a site-specific manner from individual glycopeptides using ion mobility-mass spectrometry analysis of diagnostic fragment ions.

Protein glycosylation as post-translational modification tremendously influences cellular events such as cell–cell interactions and receptor recognition.^{1,2} Glycosylation is highly dynamic, cell-type specific and depends on a variety of additional factors such as the developmental status of the cell.^{3,4} Understanding the impact of glycosylation on protein function requires detailed knowledge of individual glycan structures and their site-specific distribution, as glycoprotein macro- and microheterogeneity can vary tremendously within a single protein.^{5–9} Therefore, knowledge of both individual glycan structure and the location on a given protein is important in revealing these complex structure–function relationships.⁶

Liquid chromatography-mass spectrometry (LC-MS) is a very sensitive technique that is widely used for studying site-specific protein glycosylation.^{5,7,9,10} Differentiation of minor changes in glycan structure, such as terminal *N*-acetylneuraminic acid (NeuAc) linkages, directly from glycopeptides is very challenging due to limits in LC separation and the isobaric nature of the fragments observed by MS.^{7,10} A promising technique capable of providing additional structural information is ion mobility spectrometry (IM)

coupled to mass spectrometry (IM-MS).¹¹ In IM, analyte ions travel through a cell filled with an inert neutral gas aided by a weak electric field and undergo a series of low-energy collisions with the gas. Compact ions undergo fewer collisions with the drift gas than more extended ions and therefore traverse the IM cell faster. As a result, in IM-MS molecular ions or their fragments are not only separated according to their mass and charge, but also according to their size and shape, which enables the separation of isomers. The obtained drift times can be converted into rotationally-averaged collision cross sections (CCSS),^{12,13} which are absolute biophysical properties that can be used for structural classification by reference to database values.¹⁴

IM-MS studies on isolated glycan isomers show great promise,^{15–19} however, very few reports focus on isomeric glycopeptides.^{18,20} Here we report a universally applicable and rapid approach capable of differentiating α 2,3 and α 2,6 NeuAc linkages in *N*-glycopeptides without any additional sample preparation steps. Using IM-MS we evaluated a small set of well-defined, synthetic glycopeptides carrying *N*-glycans containing either α 2,3 or α 2,6 linked NeuAc residues. To illustrate the robustness of the method, we tested complex mixtures using two forms of α -1 proteinase inhibitor (A1PI) produced in different cell types.

Homogeneous glycopeptides were generated by chemical and chemo-enzymatic synthesis for systematic IM-MS method development. An asparagine (Asn) building block carrying biantennary, mono- or disialylated *N*-glycans was obtained from egg yolk using a combination of extraction and proteolytic digestion steps (for details see ESI†).^{21,22} This glycan-Asn building block was Fmoc protected, the NeuAc residues benzylated and the molecule subsequently used to synthesize *N*-glycopeptides by solid-phase peptide synthesis (SPPS).

The first set of glycopeptides was designed based on the naturally occurring tryptic peptide sequence from human butyrylcholinesterase (⁵⁰⁵YGNPNETQNNSTSWPVFK⁵²², UniProt entry P06276).²³ This peptide contains three possible glycosylation sites (boldface) defined by the consensus sequence N-X-T/S/C (X ≠ P), two of which are glycosylated in serum.²³ To reduce

^a Department of Biomolecular Systems, Max Planck Institute of Colloids and Interfaces, 14424 Potsdam, Germany. E-mail: daniel.kolarich@mpikg.mpg.de

^b Department of Biology, Chemistry, Pharmacy, Freie Universität Berlin, 14195 Berlin, Germany. E-mail: kevin.pagel@fu-berlin.de

^c Fritz Haber Institute of the Max Planck Society, 14195 Berlin, Germany

^d Department of Chemistry, Physical and Theoretical Chemistry Laboratory, University of Oxford, OX1 3QZ, Oxford, UK

^e Department of Chemistry, University of Natural Resources and Applied Life Sciences, Vienna, Austria

† Electronic supplementary information (ESI) available: Experimental section, additional figures. See DOI: 10.1039/c6cc01114d

‡ The authors contributed equally to this work.



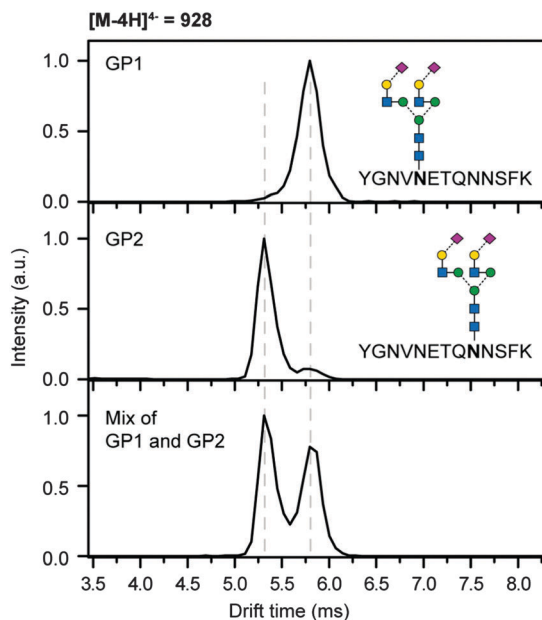


Fig. 1 IM-MS separation of the isobaric glycopeptides GP1 and GP2. Two isomeric glycopeptides that share the same sequence and attached glycan, but differ in the site of glycan attachment can be distinguished based on their drift time (top and middle) and separated in mixtures (bottom) when analysed as quadruply deprotonated ions.†

complexity, the sequence was simplified to YGNVNETQNSFK and an α 2,6 disialylated, biantennary glycan was selectively incorporated by SPPS at one glycosylation site, either near the N-(GP1) or near the C-terminus (GP2). IM-MS experiments were performed to determine whether the method can separate the isobaric glycopeptides. As protonated ions, both isomers, regardless of the charge state, could not be separated and showed identical drift times (Fig. S4, ESI†). However, when quadruply deprotonated ions ($[M - 4H]^{4-} = 928$) were measured, GP1 and GP2 had noticeably different drift times of 5.80 and 5.33 ms (Fig. 1). Both isomers, when examined as mixtures, were nearly baseline separated illustrating that IM-MS can in principle be used to differentiate isobaric glycopeptides that merely differ in their glycosylation site.

Next, we examined two glycopeptides with a single glycosylation site but different glycan structures. Specifically, the attached complex-type glycans differed in the linkage of the terminal NeuAc residue, that is either α 2,3- or α 2,6-linked to galactose. Subtle differences in NeuAc regiochemistry are of biological and biopharmaceutical importance^{8,24} and are challenging to characterise using established glycoproteomics techniques.^{25,26} The investigated peptides are designed based on the human protein C fragment²⁸⁴EVFVHPNYSK²⁹³ (UniProt entry P04070) that contains one glycosylation site (boldface). The peptide was synthesized by SPPS using an Asn building block containing an α 2,6 monosialylated, biantennary *N*-glycan. Subsequently, a fraction of the resulting glycopeptide (GP3) was desialylated using trifluoroacetic acid followed by enzymatic re-sialylation using recombinant β -galactoside α 2,3-sialyltransferase 3 (see ESI†). Finally, a glycopeptide (GP4) exclusively carrying α 2,3 linked NeuAc residues was obtained.

Only marginal, non-significant drift time differences between GP3 and GP4 were observed for 3+ molecular ions of the intact glycopeptides such that they cannot be separated in mixtures (Fig. 2b). Given the minor structural differences in the glycan moiety compared to the overall size of the molecule this result was not surprising.

When collision-induced dissociation (CID) is applied to positively charged glycopeptide ions, glycosidic cleavages are the preferred fragmentation pathway resulting in a multitude of oligosaccharide-only fragment ions (B- and Y-type fragments in Fig. 2).†²⁷ Tandem MS analysis of GP3 and GP4 yielded almost identical CID fragment spectra and did not provide diagnostic information for any glycan structural features (Fig. 2a). However, from these oligosaccharide-only fragment ions the m/z 657 B₃ type fragment is of particular interest because this oxonium ion corresponds to a trisaccharide consisting of Gal, GlcNAc and NeuAc residues in *N*-glycopeptides. To elucidate whether regiochemical differences of the NeuAc linkage in GP3 and GP4 leads to drift time differences of the resulting fragments, CID experiments were followed by IM-MS analysis. The extracted arrival time distributions (ATDs) of these m/z 657 B₃ ions were vastly different for GP3 and GP4 (Fig. 2b), with the α 2,6 fragment exhibiting a considerably shorter drift time when compared to the α 2,3 equivalent. When both glycopeptides were mixed, the isomeric NeuAc-containing fragments showed baseline separation. In addition, the collision cross sections in nitrogen drift gas ($^{TW}CCS_{N_2}$) of 236 Å² for the α 2,6 linked NeuAc and 246 Å² for the α 2,3 linked NeuAc fragments differed about 4%, well above the 1.5% error of the method.¹³ These values are highly diagnostic to the regiochemistry of the underlying NeuAc linkage and can be used to gain site-specific information on important glycan structural features directly from individual glycopeptides in a single experiment.

To evaluate whether similar diagnostic fragments could be obtained from complex mixtures within a glycoproteomics workflow, forms of the glycoprotein A1PI were tested (Fig. 3a). *N*-Glycan NeuAc linkages on A1PI differ depending on the biological source of the protein. Human plasma A1PI contains mostly α 2,6 linked NeuAc residues²⁵ whereas the same protein recombinantly expressed in Chinese hamster ovary (CHO) cells only contains α 2,3 sialylated glycans.²⁸ A1PI samples from both sources were purified using SDS-gel electrophoresis followed by in-gel tryptic digestion and glycopeptide enrichment using hydrophilic interaction chromatography (HILIC) to remove unglycosylated peptides as these can suppress efficient glycopeptide detection (for details see ESI†).²² Subsequently, the purified glycopeptides were analysed off-line by IM-MS (Fig. S5 and S6, ESI†). Known glycopeptide precursor ions²⁵ were m/z -selected for tandem IM-MS experiments and characteristic B₃ fragments were observed after CID (Fig. 3b). Importantly, the drift times of the obtained B₃ fragments of 7.03 ms (from CHO precursor m/z 1273 and 1401) and 6.44 ms (from human plasma precursor m/z 1321) were essentially identical to those observed for the synthetic glycopeptides GP4 (6.96 ms) and GP3 (6.38 ms), respectively. In addition, the $^{TW}CCS_{N_2}$ of the oxonium fragment ions (Fig. 3b) were consistent with the synthetic reference



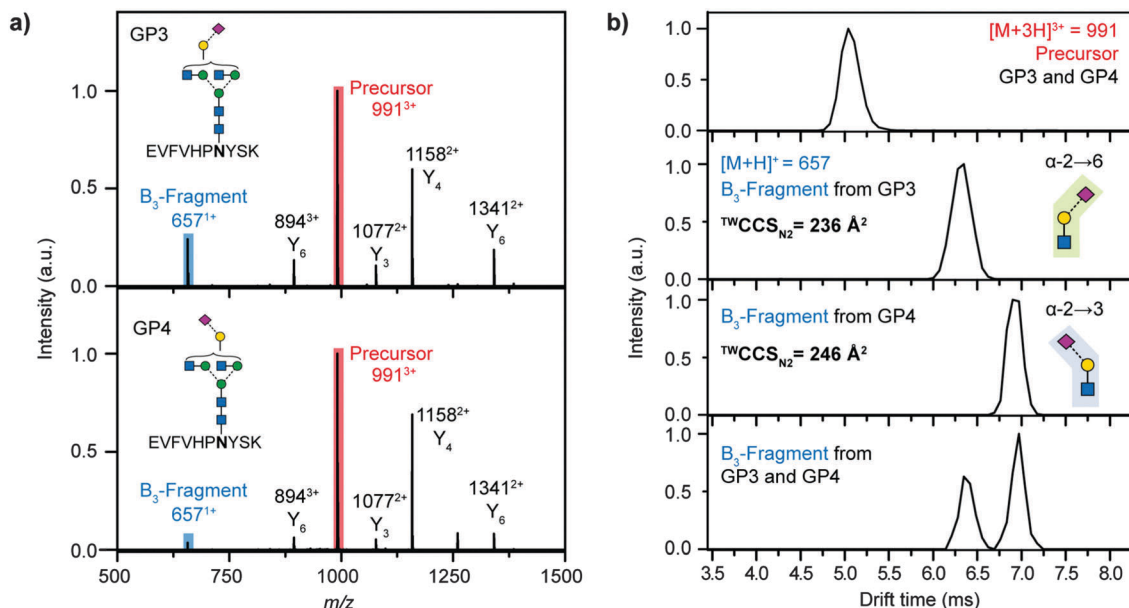


Fig. 2 Differentiation of *N*-acetylneuraminic acid (NeuAc) linkage isomers using CID fragmentation and subsequent IM-MS analysis. Two isomeric glycopeptides, which either carry α 2,6 (GP3) or α 2,3 (GP4) linked NeuAc were analysed. (a) Both peptides exhibit identical MS/MS spectra, as shown for the triply protonated precursor ion (red). (b) When analysed as mixture the intact glycopeptide ions cannot be separated by IM-MS (m/z 991, red). B_3 -trisaccharide fragments (m/z 657, blue) directly cleaved from the glycopeptide by CID on the other hand show characteristic drift times depending on the regiochemistry of the NeuAc linkage, which allows unambiguous identification α 2,3 and α 2,6 linked isoforms.†

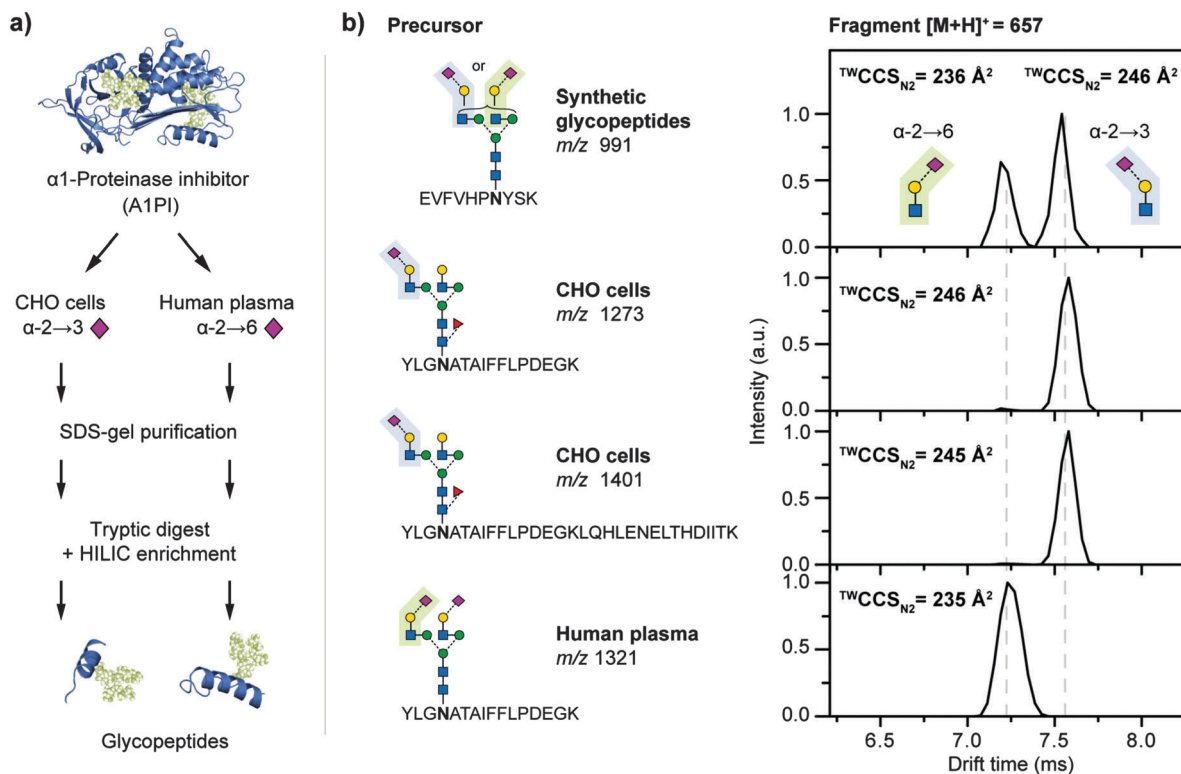


Fig. 3 Regiochemistry analysis of *N*-acetylneuraminic acid (NeuAc) linkages in α 1-proteinase inhibitor (A1PI). (a) A1PI isolated from human plasma and recombinantly expressed in Chinese hamster ovary (CHO) cells was purified, digested with trypsin, and the glycopeptides HILIC-enriched. (b) Fragmentation of the obtained glycopeptides and subsequent IM-MS analysis of the characteristic B_3 -trisaccharide fragments (m/z 657) enabled the differentiation of α 2,3 from α 2,6 linked NeuAc. The observed fragment drift times and $TWCCS_{N_2}$ are independent of the underlying precursor sequence.†



glycopeptide data and can be used to differentiate α 2,3 from α 2,6 sialylated *N*-glycans from all sialylated glycopeptides obtained from CHO-derived and human A1PI (Fig. 3b). The universal applicability of this approach is demonstrated, as size and sequence of the glycopeptide precursors did not affect the drift time of the resulting B₃ fragment. This finding underscores the diagnostic nature of the α 2,3 or α 2,6 fragments and justifies this approach as a reliable fragment-based method to obtain *N*-glycan structure information directly from glycopeptides.

In conclusion, we show that IM-MS can significantly improve the identification of isomeric glycopeptides and fits seamlessly within existing glycoproteomics workflows. Peptides with two distinct glycosylation sites can be differentiated directly as intact molecular ions using IM-MS. The regiochemistry of the prevalent α 2,3 and α 2,6 NeuAc linkages in *N*-glycosylated peptides can be distinguished and allows for the unambiguous identification in a site-specific manner on basis of the CCSs of diagnostic B₃-type fragments that are cleaved directly from mass-selected glycopeptide precursors. The approach is fast, does not require derivatisation and is universally applicable regardless of the nature of the investigated glycoprotein. Our data highlight the immense potential of IM-MS to be implemented into existing glycoproteomic workflows.

We thank the Max Planck Society for generous financial support, ProBioGen AG for kindly providing A1PI produced in CHO cells and Daniel Maresch for technical assistance in enzymatic glycan remodelling. DK and HH acknowledge support by the European Union (Seventh Framework Programme “Glycoproteomics” project, grant number PCIG09-GA-2011-293847 and IBD-BIOM project grant number 305479). DVS acknowledges the RIKEN-Max Planck Joint Center for Systems Chemical Biology for financial support. WBS thanks the Biotechnology and Biological Sciences Research Council (BBSRC) [BB/L017733/1] for financial support. JH and KP thank Dr. Gert von Helden and Prof. Michael T. Bowers for fruitful discussions and support.

Notes and references

§ Glycan structures are depicted using the SNFG nomenclature recommended in the Essentials of Glycobiology.³

¶ Glycan fragment annotation is based on a nomenclature introduced by Domon and Costello.²⁹ To differentiate between peptide and oligosaccharide fragments, small and capital letters are used, respectively.

- 1 P. R. Crocker, J. C. Paulson and A. Varki, *Nat. Rev. Immunol.*, 2007, **7**, 255–266.
- 2 A. Grigorian, S. Torossian and M. Demetriou, *Immunol. Rev.*, 2009, **230**, 232–246.

- 3 *Essentials of Glycobiology*, ed. A. Varki, R. D. Cummings, J. D. Esko, H. H. Freeze, P. Stanley, C. R. Bertozzi, G. W. Hart and M. E. Etzler, Cold Spring Harbor Laboratory Press, Cold Spring Harbor (NY), USA, 2nd edn, 2009.
- 4 K. W. Moremen, M. Tiemeyer and A. V. Nairn, *Nat. Rev. Mol. Cell Biol.*, 2012, **13**, 448–462.
- 5 R. Plomp, P. J. Hensbergen, Y. Rombouts, G. Zauner, I. Dragan, C. A. M. Koeleman, A. M. Deelder and M. Wührer, *J. Proteome Res.*, 2014, **13**, 536–546.
- 6 K.-T. C. Shade, B. Platzer, N. Washburn, V. Mani, Y. C. Bartsch, M. Conroy, J. D. Pagan, C. Bosques, T. R. Mempel, E. Fiebigler and R. M. Anthony, *J. Exp. Med.*, 2015, **212**, 457–467.
- 7 H. Hinneburg, K. Stavenhagen, U. Schweiger-Hufnagel, S. Pengelley, W. Jabs, P. H. Seeberger, D. V. Silva, M. Wührer and D. Kolarich, *J. Am. Soc. Mass Spectrom.*, 2016, **27**, 507–519.
- 8 J. Stadlmann, M. Pabst and F. Altmann, *J. Clin. Immunol.*, 2010, **30**, 15–19.
- 9 I. Loke, N. H. Packer and M. Thaysen-Andersen, *Biomolecules*, 2015, **5**, 1832–1854.
- 10 K. Stavenhagen, R. Plomp and M. Wührer, *Anal. Chem.*, 2015, **87**, 11691–11699.
- 11 B. C. Bohrer, S. I. Merenbloom, S. L. Koeniger, A. E. Hilderbrand and D. E. Clemmer, *Annu. Rev. Anal. Chem.*, 2008, **1**, 293–327.
- 12 K. Pagel and D. J. Harvey, *Anal. Chem.*, 2013, **85**, 5138–5145.
- 13 J. Hofmann, W. B. Struwe, C. A. Scarff, J. H. Scrivens, D. J. Harvey and K. Pagel, *Anal. Chem.*, 2014, **86**, 10789–10795.
- 14 W. B. Struwe, K. Pagel, J. L. P. Benesch, D. J. Harvey and M. P. Campbell, *Glycoconjugate J.*, 2015, DOI: 10.1007/s10719-015-9613-7.
- 15 W. Gabryelski and K. L. Froese, *J. Am. Soc. Mass Spectrom.*, 2003, **14**, 265–277.
- 16 B. H. Clowers, P. Dwivedi, W. E. Steiner, H. H. Hill Jr. and B. Bendiak, *J. Am. Soc. Mass Spectrom.*, 2005, **16**, 660–669.
- 17 M. D. Plasencia, D. Isailovic, S. I. Merenbloom, Y. Mechref and D. E. Clemmer, *J. Am. Soc. Mass Spectrom.*, 2008, **19**, 1706–1715.
- 18 P. Both, A. P. Green, C. J. Gray, R. Sardzik, J. Voglmeir, C. Fontana, M. Austerl, M. Rejzek, D. Richardson, R. A. Field, G. Widmalm, S. L. Flitsch and C. E. Eyers, *Nat. Chem.*, 2014, **6**, 65–74.
- 19 J. Hofmann, H. S. Hahm, P. H. Seeberger and K. Pagel, *Nature*, 2015, **526**, 241–244.
- 20 A. J. Creese and H. J. Cooper, *Anal. Chem.*, 2012, **84**, 2597–2601.
- 21 C. Piontek, D. Varón Silva, C. Heinlein, C. Pöhner, S. Mezzato, P. Ring, A. Martin, F. X. Schmid and C. Unverzagt, *Angew. Chem., Int. Ed.*, 2009, **48**, 1941–1945.
- 22 K. Stavenhagen, H. Hinneburg, M. Thaysen-Andersen, L. Hartmann, D. V. Silva, J. Fuchser, S. Kaspar, E. Rapp, P. H. Seeberger and D. Kolarich, *J. Mass Spectrom.*, 2013, **48**, 627–639.
- 23 D. Kolarich, A. Weber, M. Pabst, J. Stadlmann, W. Teschner, H. Ehrlich, H.-P. Schwarz and F. Altmann, *Proteomics*, 2008, **8**, 254–263.
- 24 R. M. Anthony, F. Nimmerjahn, D. J. Ashline, V. N. Reinhold, J. C. Paulson and J. V. Ravetch, *Science*, 2008, **320**, 373–376.
- 25 D. Kolarich, A. Weber, P. L. Turecek, H.-P. Schwarz and F. Altmann, *Proteomics*, 2006, **6**, 3369–3380.
- 26 M. Thaysen-Andersen, M. R. Larsen, N. H. Packer and G. Palmisano, *RSC Adv.*, 2013, **3**, 22683–22705.
- 27 J. Nilsson, *Glycoconjugate J.*, 2016, DOI: 10.1007/s10719-016-9649-3.
- 28 H. Sasaki, N. Ochi, A. Dell and M. Fukuda, *Biochemistry*, 1988, **27**, 8618–8626.
- 29 B. Domon and C. E. Costello, *Glycoconjugate J.*, 1988, **5**, 397–409.

