

## Appendix C – Selected Local View Interaction Flows

The following flows are only some examples of interaction taking place between the various components of the architecture.

Fig. C.1 for example depicts the registration process of a network protocol with the Local View component. Additionally, the figure illustrates the write access procedure to a data container and the subsequent deletion after the useful lifetime of the container expires.

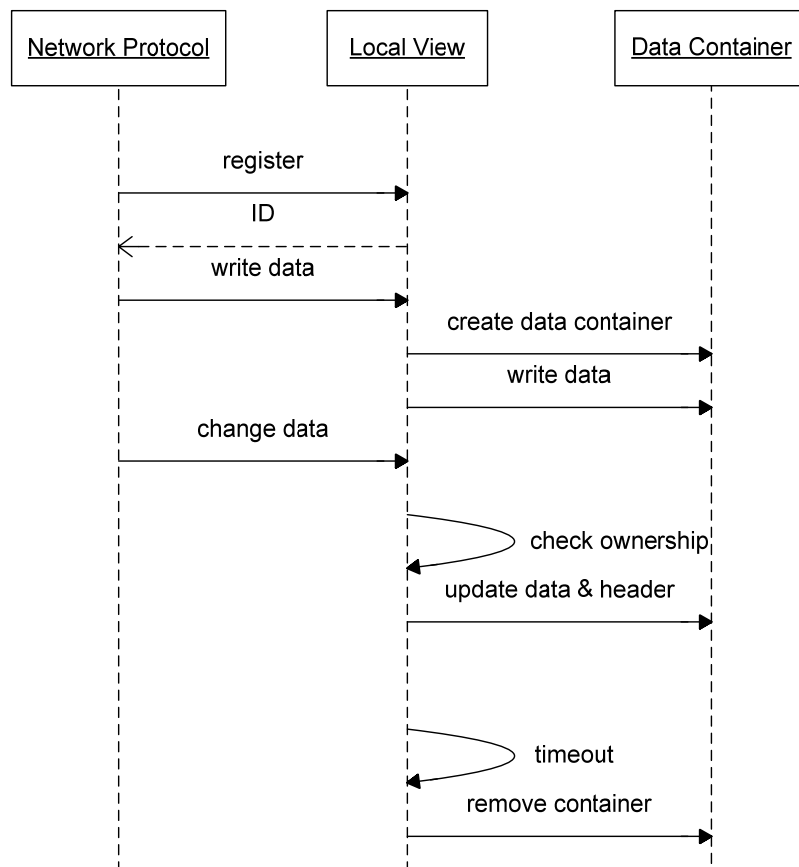
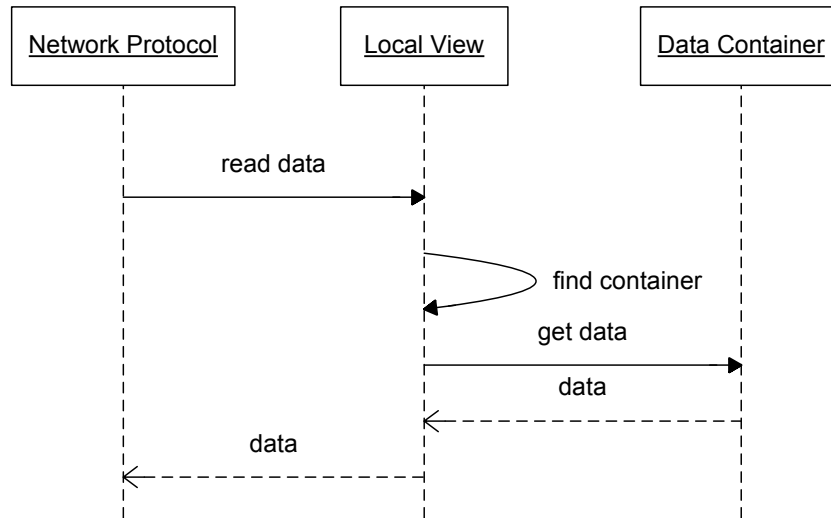


Fig. C.1 Interaction between a protocol, the local view and a related data container

In Fig. C.2 a simple read access of data inside the Local View component is shown. As can be seen the network protocol can not access the data directly. This level of indirection is necessary for consistency and security reasons.



**Fig. C.2 Interactions during a read access**