

Aus der Arbeitsgruppe für Ultrahochfeld Magnetresonanz des Max Delbrück  
Zentrums für Molekulare Medizin (MDC)

DISSERTATION

Entwicklung lokaler mehrkanaliger Radiofrequenz Sende- und  
Empfangsantennen und deren Vergleich mit Ganzkörperresonatoren  
für die kardiale Magnetresonanztomographie bei 3.0 Tesla

zur Erlangung des akademischen Grades  
Doctor rerum medicinalium (Dr. rer. medic.)

vorgelegt der Medizinischen Fakultät  
Charité – Universitätsmedizin Berlin

von

Oliver Weinberger (geb. Kraus)

aus München

Datum der Promotion:

25.6.2017

## Inhaltsverzeichnis

Zusammenfassung .....	3
Abstract .....	5
Eidesstattliche Versicherung und ausführliche Anteilserklärung .....	7
Auszug aus der Journal Summary List (ISI Web of Knowledge) .....	9
Ausgewählte Publikation.....	10
Lebenslauf .....	33
Komplette Publikationsliste .....	35
Danksagung .....	39

## Zusammenfassung

Durch die Vielzahl von Kontrastmechanismen und den hervorragenden Weichteilkontrast wurde die Magnetresonanztomographie (MRT) zur festen Größe in der Radiologie. Bei Herz-MR-Untersuchungen werden hauptsächlich Radiofrequenz (RF) Ganzkörperresonatoren verwendet um im Körper die erforderlichen elektromagnetischen (EM) Felder zu produzieren. EM Simulationen haben gezeigt, dass der Energieeintrag von Ganzkörperresonatoren auch weit außerhalb der Zielanatomie noch signifikant ist. Gerade für Patienten mit Implantaten (koronare Stents, Hüftimplantate, etc.) ist dies aus Sicherheitserwägungen kritisch, weshalb solche Patienten häufig von MR-Untersuchungen ausgeschlossen werden müssen. Für lokale Sende- und Empfangsantennen wurde demonstriert, dass sie nur auf ein stark begrenztes Körpervolumen merklich Energie abgeben und sich daher als Alternative zu Ganzkörperresonatoren anbieten. Deswegen werden in dieser Arbeit lokale mehrkanalige Sende-/Empfangsantennen simuliert und entwickelt. Ihre Fähigkeiten werden hinsichtlich Signalhomogenität und Anregungseffizienz für die Herz-MRT demonstriert und gegen den bisherigen klinischen Standard - die Anregung mit Ganzkörperresonatoren - verglichen.

Zur Umsetzung der Zielstellung wurde eine lokale vierkanalige Sende-/Empfangsantenne simuliert, konstruiert und für die Herz-MRT optimiert. Das zu erwartende Anregungsfeld ( $B_1^+$ ) und die spezifische Absorptionsrate (SAR) wurden mittels EM Simulationen bestimmt. Eine Kohorte von 12 gesunden Probanden wurde zum einen mit der lokalen RF-Antenne und zum anderen mit dem Ganzkörperresonator vermessen. Die Herzmorphologie des linken Ventrikels (LV) wurde für beide Fälle anhand eines klinischen Standard-Protokolls quantifiziert und verglichen. Die dabei erzielten Anregungsprofile wurden mithilfe von Anregungskarten charakterisiert.

Die EM Simulationen zeigten, dass die lokale RF-Antenne sowohl ein höheres auf die Eingangsleistung normiertes Anregungsfeld ( $B_1^+/\sqrt{P_{in}}$ ) als auch ein höheres erreichbares Feld am lokalen SAR-Limit ( $B_1^+@$ lokales SAR-Limit) als der Ganzkörperresonator erzeugt. Nur wenn der Ganzkörperresonator am Ganzkörper-SAR-Limit betrieben wird, wodurch das lokale SAR-Limit um 90% überschritten wird, können mit dem Ganzkörperresonator höhere Anregungsfelder produziert werden. Die Homogenität des Anregungsfeldes des Ganzkörperresonators übertrifft jedoch die der lokalen RF-Antenne. Der Blut-Myokard-Kontrast war bei beiden Ansätzen vergleichbar. Eine statistische Analyse der LV-Quantifizierung ergab

keine signifikanten Unterschiede zwischen den Anregungsregimen und demonstriert die klinische Tauglichkeit lokaler Sende-/Empfangsantennen.

Die experimentellen Ergebnisse zeigen, dass die höhere Effizienz lokaler RF-Antennen dazu beiträgt, den Blut-Myokard-Kontrast in der Herz-MRT zu verbessern. Alternativ kann der Effizienzgewinn für kürzere Messzeiten verwendet werden, was zudem typische Bildartefakte reduziert. Darüber hinaus wird durch die lokal begrenzte Energieabgabe lokaler RF-Antennen eine MR-Untersuchung für Patienten mit Implantaten ermöglicht. Erhöht man die Zahl unabhängiger Sende-/Empfangskanäle kann das Potential von mehrkanaligen Sende-/Empfangsantennen ( $B_1^+$ -Shimming, parallele Bildgebung, etc.) weiter ausgeschöpft werden. Dadurch lässt sich das ungünstige inhomogene Anregungsprofil lokaler RF-Antennen beheben.

Lokale Sende-/Empfangsantennen bilden somit eine veritable Alternative zu heutigen Ganzkörperresonatoren.

## Abstract

The superior soft tissue contrast and wide variety of possible contrasts have made Magnetic Resonance Imaging (MRI) an essential tool for radiologists. Current cardiac MR mainly uses body radiofrequency (RF) resonators to produce the required electromagnetic (EM) fields. However, EM simulations have shown that body resonators can produce significant energy deposition, even far away from the target region. This limitation is especially serious for patients with implants (e.g. coronary stents, hip implants) and can lead to contraindications of MRI scans for these patients. Local transmit- and receive coils have been shown to deposit energy to a more limited body volume, and therefore offer the potential alternative to body resonators. In this study we designed a local multichannel transmit-/receive coil tailored for cardiac MR and compared its signal intensity performance and transmission efficiency to the current clinical standard of transmission with body resonators.

We simulated and constructed a local four-channel transmit-/receive coil, optimized for cardiac MR. We computed the transmission field ( $B_1^+$ ) and specific absorption rate (SAR) with EM simulations. Next, 12 healthy volunteers were examined to compare this local RF-coil with the standard body resonator. We quantified the morphologies of the left ventricles (LV) based on standard protocols, and determined the underlying transmission profiles using  $B_1^+$ -field maps.

EM simulations showed a higher transmit field normalized to input power ( $B_1^+/\sqrt{P_{in}}$ ), and a higher applicable transmit field ( $B_1^+$ @local SAR limit) of the local RF-coil, compared to the body resonator. Only when driven at the whole-body SAR limit the body resonator produced higher excitation fields, although at this point local SAR limits were exceeded by 90%. The transmission homogeneity of the body resonator was superior to that of the local RF-coil and in both cases the blood-myocardium-contrast was equal. There were no statistically significant differences in LV-quantification between the two transmission regimes, which demonstrates the clinical capability of local transmit-/receive coils.

These results show how the transmit efficiency of local RF-coils can improve the blood-myocardium-contrast. Alternatively their efficiency surplus could be used to shorten the acquisition time, thus reducing typical imaging artifacts. Importantly, the localized energy deposition of local RF-coils makes MR examinations in patients with implants feasible. More

independent transmit channels could further exploit the potential of multichannel transmit-/receive coils ( $B_1^+$ -shimming, parallel imaging), and mitigate the inhomogeneous excitation profile of local RF-coils.

We demonstrated here that local transmit-/receive coils can be a viable alternative to body resonators.

## **Eidesstattliche Versicherung und ausführliche Anteilserklärung**

„Ich, Oliver Weinberger, versichere an Eides statt durch meine eigenhändige Unterschrift, dass ich die vorgelegte Dissertation mit dem Thema: *Entwicklung lokaler mehrkanaliger Radiofrequenz Sende- und Empfangsantennen und deren Vergleich mit Ganzkörperresonatoren für die kardiale Magnetresonanztomographie bei 3.0 Tesla* selbstständig und ohne nicht offengelegte Hilfe Dritter verfasst und keine anderen als die angegebenen Quellen und Hilfsmittel genutzt habe.

Alle Stellen, die wörtlich oder dem Sinne nach auf Publikationen oder Vorträgen anderer Autoren beruhen, sind als solche in korrekter Zitierung (siehe „Uniform Requirements for Manuscripts (URM)“ des ICMJE -[www.icmje.org](http://www.icmje.org)) kenntlich gemacht. Die Abschnitte zu Methodik (insbesondere praktische Arbeiten, Laborbestimmungen, statistische Aufarbeitung) und Resultaten (insbesondere Abbildungen, Graphiken und Tabellen) entsprechen den URM (s.o) und werden von mir verantwortet.

Mein Anteil an der ausgewählten Publikation entspricht dem, der in der untenstehenden gemeinsamen Erklärung mit dem/der Betreuer/in, angegeben ist.

Die Bedeutung dieser eidesstattlichen Versicherung und die strafrechtlichen Folgen einer unwahren eidesstattlichen Versicherung (§156,161 des Strafgesetzbuches) sind mir bekannt und bewusst.“

---

Datum

---

Unterschrift

### **Ausführliche Anteilserklärung an der erfolgten Publikation**

Publikation :

**Weinberger O**, Winter L, Dieringer MA, Els A, Oezerdem C, Rieger J, Kuehne A, Cassara AM, Pfeiffer H, Wetterling F, Niendorf T. Local Multi-Channel RF Surface Coil versus Body RF Coil Transmission for Cardiac Magnetic Resonance at 3 Tesla: Which Configuration Is Winning the Game? PLOS ONE. 2016;11(9):e0161863. DOI: 10.1371/journal.pone.0161863. PubMed PMID: 27598923.

**Beitrag im Einzelnen:**

- Literaturrecherche
- Anteil an Konzeption und Design der Studie
- Erstellung, Durchführung und Anpassung der EM Simulationen für die mehrkanalige RF Antenne
- Charakterisierung und Optimierung der lokalen RF Antenne bzgl. Effizienz, Anregungsprofile und RF Energieeintrag
- Validierung der Simulationen der lokalen Antenne und des Ganzkörperresonators anhand von MR-Messungen an einem Torso-Phantom
- Zertifizierung der lokalen Antenne und Freigabe für die Probandenstudie
- Aufsetzen des MR-Protokolls für die Probanden-Messungen
- Durchführung der Probandenstudie
- Implementierung einer Analyse-Software zur Auswertung der gemessenen Anregungsprofile
- Erstellung der Software-Werkzeuge zur Datenverarbeitung/-auswertung der Simulationen und Experimente
- Statistische Evaluation der Ergebnisse aus der Probandenstudie
- Präsentation der Versuchsergebnisse gegenüber Kollegen und Spezialisten auf internationalen Tagungen (ISMRM)
- Erstellen und Überarbeitung der Abbildungen für die Publikation
- Erstellen und Überarbeitung des Manuskripts für die Publikation

Unterschrift, Datum und Stempel des betreuenden Hochschullehrers

---

Unterschrift des Doktoranden

---



# Auszug aus der Journal Summary List (ISI Web of Knowledge)

admin-apps.webofknowledge.com/JCR/JCR?RQ=LIST\_SUMMARY\_JOURNAL

ISI Web of Knowledge<sup>SM</sup>

Journal Citation Reports<sup>®</sup>

WELCOME HELP

2015 JCR Science Edition

Journal Title Changes

Journal Summary List

Journals from: subject categories MULTIDISCIPLINARY SCIENCES VIEW CATEGORY SUMMARY LIST

Sorted by: Impact Factor SORT AGAIN

Journals 1 - 20 (of 63) Page 1 of 4

MARK ALL UPDATE MARKED LIST

Ranking is based on your journal and sort selections.

Mark	Rank	Abbreviated Journal Title (linked to journal information)	ISSN	JCR Data <sup>j</sup>						Eigenfactor <sup>®</sup> Metrics <sup>j</sup>	
				Total Cites	Impact Factor	5-Year Impact Factor	Immediacy Index	Articles	Cited Half-life	Eigenfactor <sup>®</sup> Score	Article Influence <sup>®</sup> Score
<input type="checkbox"/>	1	<a href="#">NATURE</a>	0028-0836	627846	38.138	41.458	9.518	897	>10.0	1.44762	22.261
<input type="checkbox"/>	2	<a href="#">SCIENCE</a>	0036-8075	568210	34.661	34.921	8.961	828	>10.0	1.15726	18.048
<input type="checkbox"/>	3	<a href="#">NAT COMMUN</a>	2041-1723	75139	11.329	12.001	2.078	3192	2.2	0.47809	5.549
<input type="checkbox"/>	4	<a href="#">P NATL ACAD SCI USA</a>	0027-8424	593284	9.423	10.285	1.984	3281	8.6	1.32650	4.691
<input type="checkbox"/>	5	<a href="#">NATL SCI REV</a>	2095-5138	239	8.000	8.000	1.240	25	1.4	0.00142	3.614
<input type="checkbox"/>	6	<a href="#">GIGASCIENCE</a>	2047-217X	636	7.463	11.660	0.926	54	2.7	0.00432	5.709
<input type="checkbox"/>	7	<a href="#">SCI REP-UK</a>	2045-2322	46918	5.228	5.525	0.559	10642	2.1	0.20942	1.865
<input type="checkbox"/>	8	<a href="#">ANN NY ACAD SCI</a>	0077-8923	44076	4.518	4.416	0.864	295	>10.0	0.05284	1.632
<input type="checkbox"/>	9	<a href="#">J R SOC INTERFACE</a>	1742-5689	8953	3.818	4.409	0.744	348	4.5	0.03254	1.619
<input type="checkbox"/>	10	<a href="#">COMPLEXITY</a>	1076-2787	909	3.514	2.417	0.276	87	6.7	0.00121	0.475
<input type="checkbox"/>	11	<a href="#">PLOS ONE</a>	1932-6203	425015	3.057	3.535	0.396	28114	3.1	1.81924	1.139
<input type="checkbox"/>	12	<a href="#">RES SYNTH METHODS</a>	1759-2879	541	2.462	4.364	0.857	28	3.8	0.00498	2.784
<input type="checkbox"/>	13	<a href="#">PHILOS T R SOC A</a>	1364-503X	14562	2.441	3.050	1.342	313	8.7	0.03154	1.368
<input type="checkbox"/>	14	<a href="#">PEERJ</a>	2167-8359	1765	2.183	2.183	0.284	799	1.8	0.00929	0.872
<input type="checkbox"/>	15	<a href="#">P JPN ACAD B-PHYS</a>	0386-2208	1064	2.077	2.552	0.171	35	5.9	0.00267	0.839
<input type="checkbox"/>	16	<a href="#">P ROY SOC A-MATH PHY</a>	1364-5021	18347	1.935	2.450	0.360	278	>10.0	0.01857	1.207
<input type="checkbox"/>	17	<a href="#">CHINESE SCI BULL</a>	1001-6538	11001	1.789	1.620		0	6.7	0.02037	0.443
<input type="checkbox"/>	18	<a href="#">NATURWISSENSCHAFTEN</a>	0028-1042	6357	1.773	1.935		0	>10.0	0.00648	0.700
<input type="checkbox"/>	19	<a href="#">P ROMANIAN ACAD A</a>	1454-9069	313	1.735	1.054	0.323	65	2.4	0.00091	0.233
<input type="checkbox"/>	20	<a href="#">SCI ENG ETHICS</a>	1353-3452	771	1.454	1.323	0.293	92	5.3	0.00178	0.395

MARK ALL UPDATE MARKED LIST

Journals 1 - 20 (of 63) Page 1 of 4

Acceptable Use Policy  
Copyright © 2016 Thomson Reuters.

RESEARCH ARTICLE

# Local Multi-Channel RF Surface Coil versus Body RF Coil Transmission for Cardiac Magnetic Resonance at 3 Tesla: Which Configuration Is Winning the Game?

Oliver Weinberger<sup>1,2</sup>, Lukas Winter<sup>3</sup>, Matthias A. Dieringer<sup>4,5<sup>¶</sup>a</sup>, Antje Els<sup>3</sup>, Celal Oezerdem<sup>6,7</sup>, Jan Rieger<sup>8</sup>, Andre Kuehne<sup>8</sup>, Antonino M. Cassara<sup>9<sup>¶</sup>b</sup>, Harald Pfeiffer<sup>10</sup>, Friedrich Wetterling<sup>11</sup>, Thoralf Niendorf<sup>12,13,14\*</sup>



 OPEN ACCESS

**Citation:** Weinberger O, Winter L, Dieringer MA, Els A, Oezerdem C, Rieger J, et al. (2016) Local Multi-Channel RF Surface Coil versus Body RF Coil Transmission for Cardiac Magnetic Resonance at 3 Tesla: Which Configuration Is Winning the Game? PLoS ONE 11(9): e0161863. doi:10.1371/journal.pone.0161863

**Editor:** Heye Zhang, Shenzhen institutes of advanced technology, CHINA

**Received:** April 20, 2016

**Accepted:** July 20, 2016

**Published:** September 6, 2016

**Copyright:** © 2016 Weinberger et al. This is an open access article distributed under the terms of the [Creative Commons Attribution License](https://creativecommons.org/licenses/by/4.0/), which permits unrestricted use, distribution, and reproduction in any medium, provided the original author and source are credited.

**Data Availability Statement:** All the relevant data for this study is available from the figshare database (<http://figshare.com>), <https://figshare.com/s/15e7a43960094fa7f896>, DOI: <http://dx.doi.org/10.6084/m9.figshare.3187207>.

**Funding:** This work was supported (in part, C.O.) by the DZHK (German Centre for Cardiovascular Research, BER 601) and by the BMBF (Federal Ministry of Education and Research, Germany). This work was funded (in part, A. K.) by the EUROSTARS program (heaRT\_4\_EU, EI9340) and the BMBF

**1** Berlin Ultrahigh Field Facility (B.U.F.F.), Max Delbrueck Center for Molecular Medicine in the Helmholtz Association, Berlin, Germany, **2** Experimental and Clinical Research Center (ECRC), a joint cooperation between the Charité Medical Faculty and the Max Delbrueck Center for Molecular Medicine, Berlin, Germany, **3** Berlin Ultrahigh Field Facility (B.U.F.F.), Max Delbrueck Center for Molecular Medicine in the Helmholtz Association, Berlin, Germany, **4** Berlin Ultrahigh Field Facility (B.U.F.F.), Max Delbrueck Center for Molecular Medicine in the Helmholtz Association, Berlin, Germany, **5** Experimental and Clinical Research Center (ECRC), a joint cooperation between the Charité Medical Faculty and the Max Delbrueck Center for Molecular Medicine, Berlin, Germany, **6** Berlin Ultrahigh Field Facility (B.U.F.F.), Max Delbrueck Center for Molecular Medicine in the Helmholtz Association, Berlin, Germany, **7** German Centre for Cardiovascular Research (DZHK), Berlin, Germany, **8** MRI.TOOLS GmbH, Berlin, Germany, **9** Medical Metrology Department, Physikalisch Technische Bundesanstalt (PTB), Braunschweig and Berlin, Germany, **10** Medical Metrology Department, Physikalisch Technische Bundesanstalt (PTB), Braunschweig and Berlin, Germany, **11** Institute of Neuroscience, Trinity College Dublin, Dublin, Ireland, **12** Berlin Ultrahigh Field Facility (B.U.F.F.), Max Delbrueck Center for Molecular Medicine in the Helmholtz Association, Berlin, Germany, **13** Experimental and Clinical Research Center (ECRC), a joint cooperation between the Charité Medical Faculty and the Max Delbrueck Center for Molecular Medicine, Berlin, Germany, **14** MRI.TOOLS GmbH, Berlin, Germany

<sup>¶</sup>a Current address: Siemens Healthcare GmbH, Berlin and Erlangen, Germany

<sup>¶</sup>b Current address: IT'IS Foundation for Research on Information Technologies in Society, Zurich, Switzerland

\* [Thoralf.Niendorf@mdc-berlin.de](mailto:Thoralf.Niendorf@mdc-berlin.de)

## Abstract

### Introduction

The purpose of this study was to demonstrate the feasibility and efficiency of cardiac MR at 3 Tesla using local four-channel RF coil transmission and benchmark it against large volume body RF coil excitation.

### Methods

Electromagnetic field simulations are conducted to detail RF power deposition, transmission field uniformity and efficiency for local and body RF coil transmission. For both excitation regimes transmission field maps are acquired in a human torso phantom. For each transmission regime flip angle distributions and blood-myocardium contrast are examined

(Federal Ministry of Education and Research, Germany, FKZ 01QE1501B). This work was funded (in part, T.N.) by the Helmholtz Alliance ICEMED—Imaging and Curing Environmental Metabolic Diseases, through the Initiative and Network Fund of the Helmholtz Association (ICEMED-Project 1210251). The funders provided support in the form of salaries (in part, C.O., J. R., A.K.), but had no role in study design, data collection and analysis, decision to publish, or preparation of the manuscript. The specific roles of these authors are articulated in the 'author contributions' section. Andre Kuehne and Jan Rieger are employees of MRI.TOOLS GmbH, Berlin, Germany. Thoralf Niendorf is founder and CEO of MRI.TOOLS GmbH, Berlin, Germany. The funder provided support in the form of salaries for authors A. K. and J.R., but did not have any additional role in the study design, data collection and analysis, decision to publish, or preparation of the manuscript. The specific roles of these authors are articulated in the 'author contributions' section.

**Competing Interests:** Andre Kuehne and Jan Rieger are employees of MRI.TOOLS GmbH, Berlin, Germany. Thoralf Niendorf is founder and CEO of MRI.TOOLS GmbH, Berlin, Germany. The authors confirm that this commercial affiliation does not alter their adherence to PLOS ONE policies on sharing data and materials. Matthias Dieringer is currently employed by Siemens Healthcare, Berlin, Germany. His contributions to this work, however, happened when he was employed at Charité, University Medicine, Berlin, Germany. Therefore, Siemens did not provide funding or play a role in the study design, data collection and analysis, decision to publish, or preparation of the manuscript. The authors confirm that this commercial affiliation does not alter their adherence to PLOS ONE policies on sharing data and materials. Antonino Cassara is currently employed by the IT'IS Foundation, Zurich, Switzerland. His contributions to this work, however, happened when he was employed at PTB, Berlin, Germany. Therefore, IT'IS did not provide funding or play a role in the study design, data collection and analysis, decision to publish, or preparation of the manuscript. The authors confirm that this commercial affiliation does not alter their adherence to PLOS ONE policies on sharing data and materials.

in a volunteer study of 12 subjects. The feasibility of the local transceiver RF coil array for cardiac chamber quantification at 3 Tesla is demonstrated.

## Results

Our simulations and experiments demonstrate that cardiac MR at 3 Tesla using four-channel surface RF coil transmission is competitive versus current clinical CMR practice of large volume body RF coil transmission. The efficiency advantage of the 4TX/4RX setup facilitates shorter repetition times governed by local SAR limits versus body RF coil transmission at whole-body SAR limit. No statistically significant difference was found for cardiac chamber quantification derived with body RF coil versus four-channel surface RF coil transmission. Our simulation also show that the body RF coil exceeds local SAR limits by a factor of ~2 when driven at maximum applicable input power to reach the whole-body SAR limit.

## Conclusion

Pursuing local surface RF coil arrays for transmission in cardiac MR is a conceptually appealing alternative to body RF coil transmission, especially for patients with implants.

## Introduction

In current clinical cardiac MR (CMR), integrated large volume body radiofrequency (RF) coils are commonly used for <sup>1</sup>H excitation together with close-fitting receive-only (RX) RF surface coil arrays [1]. The large-volume excitation with a body RF coil bodes well for a uniform transmission field ( $B_1^+$ -field) across the upper torso, which is nearly independent of the RF coil's loading and the target region under investigation. RF energy provided by the body RF coil is deposited over a large volume though. Therefore RF power is limited by the whole-body and partial-body specific absorption rate (SAR) governed by the International Electrotechnical Commission (IEC) guidelines [2]. Unlike body RF coils, local transmit (TX) RF coils are positioned close to the chest, excite spins in a limited region of the upper torso and deposit the majority of the RF energy there. They have to obey local maximum SAR limits averaged over 10 gram tissue ( $SAR_{10g}$ ) [3].

Progress in ultrahigh field MR ( $B_0 \geq 7T$ ) demonstrated that local transceiver (TX/RX) RF coil arrays [4–9] are suitable for RF excitation of deep lying regions such as the heart [10]. The degrees of freedom provided by the independent transmit channels improve excitation fidelity and help to manage  $B_1^+$ -field inhomogeneities induced by wavelength shortening ( $\lambda_{myocardium}^{7T} \approx 13$  cm) by  $B_1^+$ -shimming techniques [11] or parallel transmission approaches [12, 13]. While most of the effort on transmit-receive array structures for CMR is currently occurring at 7T, recognition of the benefits of these structures may result in an eventual migration to 3T ( $\lambda_{myocardium}^{3T} \approx 30$  cm), where RF inhomogeneities and SAR limitations, though of less extent, remain significant in clinical CMR [14–16]. This is a powerful motivator to elucidate the performance of local multi-channel surface RF coils versus large volume body RF coil transmission for CMR at 3T, which has not been explored comprehensively yet.

Recognizing this opportunity, this work demonstrates the feasibility of cardiac MR at 3T with a local four-channel TX/RX RF coil array [17–19]. This setup is benchmarked against the clinical standard of a large volume body RF coil for excitation in conjunction with (i) a 32-channel RX-only RF coil array or (ii) a four-channel RX-only RF coil array for reception,

both being tailored for CMR. Our assessment includes electromagnetic field (EMF) simulations to detail RF power deposition and to explore  $B_1^+$ -homogeneity performance and transmit efficiency for the local and body RF coil configuration. For both excitation regimes transmission field maps are acquired in a human torso phantom and in healthy subjects. The feasibility of the local TX/RX RF coil array for high spatial resolution 2D steady-state free precession (SSFP) CINE imaging of the heart at 3T is demonstrated in a volunteer study. For this purpose flip angle distributions and blood-myocardium contrast across the heart are examined for each transmission regime together with left ventricular (LV) chamber quantification. It is shown that image quality and LV function obtained with the local transceiver RF coil array are competitive with those derived from the traditional approach using body RF coil transmission. Practical implications and limitations of multi-channel surface RF coil transmission for cardiac MR are discussed.

## Methods

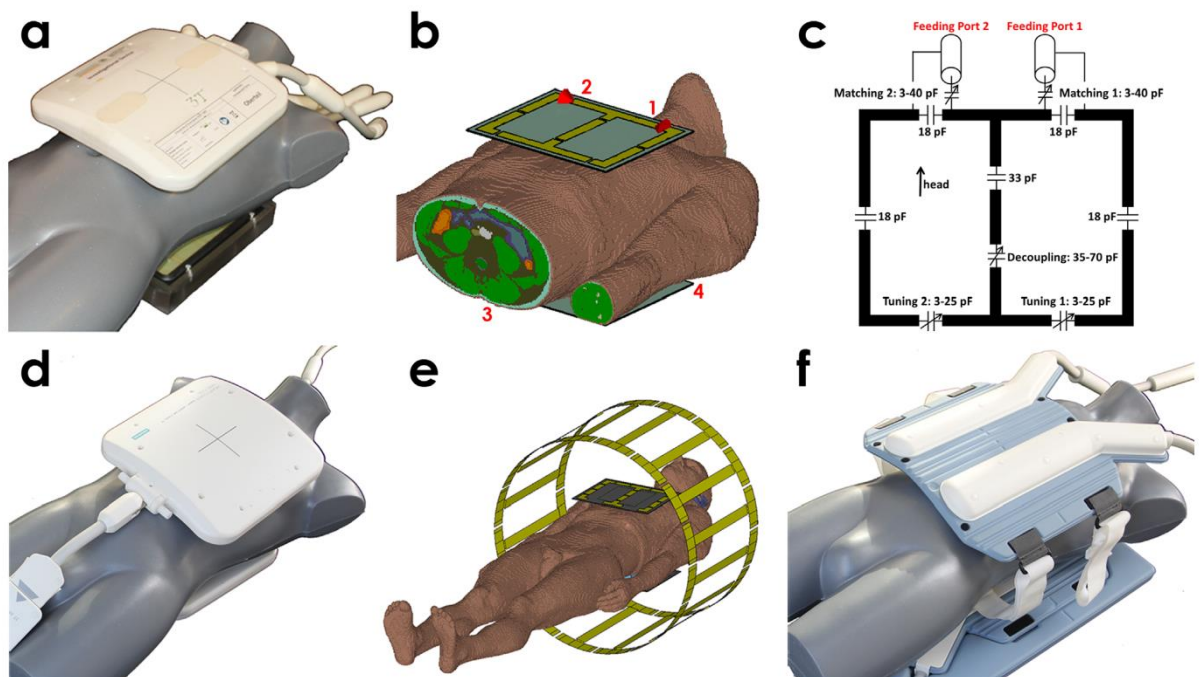
### RF Hardware

This study was conducted with a wide-bore (70 cm) 3T whole-body MR system (MAGNETOM Verio, Siemens Healthcare, Erlangen, Germany) equipped with a gradient system that offers a maximum slew rate of 200 mT/m/ms and a maximum gradient strength of 45 mT/m. Three RF coil configurations were employed:

**4TX/4RX: Four-channel local transceiver surface RF coil array.** A local transceiver RF coil array (4TX/4RX) comprising four loop elements meeting the needs of patient comfort and ease of clinical use was built ( $f_0 = 123$  MHz). The four coil loops were constructed on two slightly curved lightweight formers to conform to an average torso. Two pairs of rectangular loops were mounted each on the anterior and the posterior former (Fig 1A–1C). The loop size was set to H-F = 180 mm and L-R = 120 mm to enable whole heart coverage and appropriate depth penetration [20]. Coil decoupling for neighboring loops was achieved by a common conductor with a shared decoupling capacitor (see Fig 1C) [21]. After tuning and matching the largest reflection and coupling parameters of the RF coil, ( $n = 5$  subjects) were  $S_{11} = -10$  dB and  $S_{34} = -21$  dB. The RF transmit power was provided by an RF amplifier ( $P_{\max} = 8$  kW, Anaren®, Syracuse New York, USA) and was equally split by hybrid couplers (Stark Contrast, Erlangen, Germany) into four feeding ports highlighted by the red numbers in Fig 1B and 1C. With the four independent feeding ports the transceiver array offers three degrees of freedom for basic  $B_1^+$ -phase shimming, which was realized by inserting phase shifting cables into the transmit path between the power splitter and the transmit/receive switch (Stark Contrast, Erlangen, Germany).

**BC/4RX: Large volume TX body RF coil in conjunction with a four-channel RX surface array.** For this configuration a large volume body RF coil (BC) was used for transmission ( $f_0 = 123$  MHz). The body RF coil is a birdcage volume RF coil consisting of 16 equidistant rungs with a total length of 45 cm (Fig 1E). The body RF coil is driven by a 35 kW RF power amplifier at two feeding ports. The RF phase between these ports is fixed resulting in an elliptical polarized excitation without allowing modifications of the  $B_1^+$ -field distribution. To facilitate high receive sensitivities, signal reception was performed with a home-built four-channel receive-only RF coil array (4RX,  $f_0 = 123$  MHz). This receive array resembles the geometry of the 4TX/4RX RF coil (Fig 1D). The computer model of the body RF coil together with the 4RX RF coil is shown in Fig 1E.

**BC/32RX: Large volume TX body RF coil in conjunction with a 32-channel RX surface array.** To benchmark the 4TX/RX RF coil against the clinical standard of a state of the art



**Fig 1. Photographs and simulation setups of the used RF coil configurations.** (a) local four-channel TX/RX RF surface coil array (4TX/4RX) and (b) its EMF simulation setup loaded with the truncated human voxel model Duke. The feeding ports of the RF coil are marked in red. (c) basic circuit diagram of the 4TX/4RX RF coil. (d) photograph of the four-channel RX-only RF surface coil (4RX). (e) EMF simulation setup of the body RF coil loaded with the voxel model Duke. The detuned four-channel receive-only surface RF coil (4RX) is included to examine possible field distortions [23]. (f) photograph of the 32-channel RX-only RF surface coil. In configuration (d) and (f) the body RF coil (BC) transmits.

doi:10.1371/journal.pone.0161863.g001

32-channel receive-only RF coil array (32RX, Invivo, Gainesville, Florida, USA,  $f_0 = 123$  MHz) was used for reception in conjunction with the body RF coil described above (Fig 1F).

### Electromagnetic Field Simulations

Numerical electromagnetic field (EMF) simulations were performed in CST Studio Suite 2012 (CST AG, Darmstadt, Germany) to estimate  $B_1^+$  and SAR distributions of the transmit RF coils. For the body RF coil simulations the entire voxel models Duke (1.74 m, 70 kg, 34 years, BMI: 23.1 kg/m<sup>2</sup>) and Ella (1.60 m, 58 kg, 26 years, BMI: 22.7 kg/m<sup>2</sup>) from the Virtual Family [22] were included (Fig 1E). With a total simulation mesh cell number of 34 million for Duke and 30 million for Ella the mesh resolution inside the body models was ~3 mm in the axial plane and ~5 mm along the z-direction. To consider potential interactions a detuned model of the 4RX RF coil was incorporated in the simulations [23].

For EMF simulations of the 4TX/4RX setup the voxel models Duke and Ella were truncated along the head-feet axis (Fig 1B) to save computational time. The total mesh count was 28 and 23 million mesh cells for Duke and Ella, which translates into an isotropic mesh resolution of ~2 mm inside the body models.

For all simulations  $k = \max(\text{SAR}_{10g})/P_{in}$  was calculated and transferred to the scanner, which uses it to determine the maximum RF input power  $P_{in} = P_{forward} - P_{reflected}$  for the in vivo measurements according to the IEC guidelines [2].

To avoid dominating local SAR hotspots for the local TX/RX coil, the distance between the RF coil array and the body surface of the human voxel was adapted. For this purpose a distance of 1cm between the body and the RF coil array was realized for the anterior section. For the posterior coil section a distance of 2 cm between the body surface and the RF coil array was accomplished.

### Transmit Phase Settings for the Four-Channel TX/RX RF Coil Array

**Phase setting  $\Phi_1$ .** This phase setting was derived from in vivo data obtained for a healthy male subject (54 years, BMI: 24 kg/m<sup>2</sup>) with a parallel TX system (3T MAGNETOM Verio, Siemens Healthcare, Erlangen, Germany). Relative transmit phase maps [24] of each channel were acquired for a four-chamber view of the heart. The relative transmit phase of each channel was averaged inside a ROI accommodating the heart. The differences of these calculated phase shifts were compensated in order to induce maximal constructive  $B_1^+$ -interference in the given ROI. Hence  $\Phi_1$  maximizes  $B_1^+$ -efficiency in the heart and does not take  $B_1^+$ -homogeneity nor local SAR<sub>10g</sub> considerations into account.  $\Phi_1: \varphi_1 = 0^\circ, \varphi_2 = -265^\circ, \varphi_3 = -92^\circ, \varphi_4 = -358^\circ$

**Phase setting  $\Phi_2$ .** Phase setting  $\Phi_2$  was derived from EMF simulations using the voxel model Duke and Ella. For this purpose simulated  $B_1^+$ -fields were extracted for each individual channel for Duke and Ella and interpolated on an equidistant 3 mm grid. A matrix  $A$  was generated containing all  $N$  voxels of Duke's and Ella's heart for all channels resulting in a  $(N \times 4)$  matrix, so that  $B_1^+(\Phi) = A * \Phi$  forms the target  $(N \times 1)$  magnetization vector, where  $\Phi = (1, e^{i\varphi_2}, e^{i\varphi_3}, e^{i\varphi_4})$  is the excitation vector of the four transmit channels and  $\varphi_i$  is the relative phase to transmit channel 1. 3D single-channel E-fields together with density and conductivity matrices were extracted in order to compute the corresponding  $(4 \times 4)$ -SAR-matrices [13, 25, 26]. Rapid SAR computations were conducted (SimOpTx, Vienna, Austria) for 10 g tissue mass averages [3]. With these  $(4 \times 4)$ -SAR-matrices for both simulation models (Duke and Ella), a merit function  $f(\Phi)$  was constructed to optimize  $B_1^+$ -homogeneity versus  $B_1^+$ -efficiency and local SAR<sub>10g</sub>:

$$f(\Phi) = \underbrace{\frac{\text{std}(|B_1^+(\Phi)|)}{\text{mean}(|B_1^+(\Phi)|)}}_{B_1^+ \text{ - homogeneity}} - \beta * \underbrace{\frac{1}{\sqrt{\max(\text{SAR}_{10g}^{\text{Duke}}(\Phi), \text{SAR}_{10g}^{\text{Ella}}(\Phi))}}}_{\text{local SAR}_{10g}} * \underbrace{\frac{\text{MOS}(B_1^+(\Phi))}{\text{SOM}(B_1^+(\Phi))}}_{B_1^+ \text{ - efficiency}} \quad (1)$$

with MOS/SOM denoting the magnitude of sum/sum of magnitudes and a weighting factor  $\beta$ , which balances  $B_1^+$ -homogeneity (first term) with local SAR<sub>10g</sub> and  $B_1^+$ -efficiency (second term). When setting the weighting factor  $\beta = 1$ ,  $\Phi_2$  minimizes this merit function.

As part of the validation of the phase optimization an isotropic raster search was performed using phase increments of 5° to examine each sub-term with varying  $\beta$ . For  $\beta \geq 0.6$  a balance between  $B_1^+$ -homogeneity,  $B_1^+$ -efficiency and SAR was observed, meaning that the phase setting to reach this balance stays unchanged. The TX phase setting deduced from the raster search (0°, -270°, -145°, -25°) and from the optimization procedure (0°, -271°, -142°, -25°) were equivalent (within a 3° variance), demonstrating that the optimization has indeed converged.  $\Phi_2: \varphi_1 = 0^\circ, \varphi_2 = -271^\circ, \varphi_3 = -142^\circ, \varphi_4 = -25^\circ$

**Phase setting  $\Phi_3$ .** The procedure to obtain phase setting  $\Phi_3$  was identical to  $\Phi_2$ , except that the target magnetization was restricted to an apical short-axis view (SAX) of the voxel model Duke. Thus with  $\Phi_3$  the 4TX/4RX RF coil achieves a uniform and efficient excitation of an apical SAX.  $\Phi_3: \varphi_1 = 0^\circ, \varphi_2 = -272^\circ, \varphi_3 = -60^\circ, \varphi_4 = -326^\circ$

### Validation of EMF Simulations in Phantom Experiments

To validate the EMF simulations of the body RF coil and the 4TX/RX RF coil,  $B_1^+$ -mapping was performed using a home-built torso phantom (dimensions H-F: 45 cm, L-R: 35 cm, A-P: 23 cm). The phantom was filled with a mixture of distilled water, copper sulfate ( $\text{CuSO}_4$ , 0.73 g/l) and sodium chloride ( $\text{NaCl}$ , 3.3 g/l) to resemble electromagnetic tissue properties at 3T. Agarose ( $\text{C}_{12}\text{H}_{18}\text{O}_9$ , 20g/l) was used as a gelling agent. The resulting electromagnetic properties ( $\sigma = 0.74 \text{ S/m}$ ,  $\epsilon_r = 79.6$ ) determined by complex impedance measurement were incorporated into the EMF simulations.

Absolute  $B_1^+$ -distributions of the individual RF coil configurations derived from the EMF simulations were compared to maps of absolute  $B_1^+$ -values derived from measurements. RF transmission field mapping was conducted using a Bloch-Siegert implementation [27, 28] (spatial resolution:  $3 \times 3 \times 6 \text{ mm}^3$ , 4.5 ms Fermi pulse, off-center frequency: 4 kHz, TR = 80 ms, TA = 16 s) employing double gradient echo acquisitions ( $\text{TE}_1/\text{TE}_2 = 7.3/9.7 \text{ ms}$ ) to enable static magnetic field ( $B_0$ ) mapping.  $B_1^+$ -mapping was done offline using Bloch simulations in Matlab (MathWorks, Natick, MA, USA) considering  $B_0$  nonuniformities. To compare simulation and measurement on a pixel to pixel basis, the simulated  $B_1^+$ -fields of a mid-axial slice through the phantom were interpolated to the measured spatial grid and absolute difference maps were computed.

### RF Power and SAR Limits for the Volunteer Study

In order to compare the transmission regimes under investigation, the CMR examinations were driven on the RF coil-dependent SAR limit for each transmission regime. For a constant pulse duration and TR, SAR scales quadratically with the applied flip angle, which is directly proportional to the  $B_1^+$ -efficiency:

$$\text{SAR} \propto P_{in} \propto B_1^{+2} \propto FA^2 \tag{2}$$

with the RF input power  $P_{in}$ , the excitation field  $B_1^+$  and the flip angle  $FA$ . For the transmission regimes using the large volume body RF coil the SAR limits are 2 W/kg for a 6 min and 4 W/kg for a 10 s averaging time [2]. For local cardiac transmit RF coil arrays local  $\text{SAR}_{10g}$  limits are 10 W/kg for a 6 min and 20 W/kg for a 10 s average. In clinical practice cardiac MR examinations are commonly conducted with breath hold acquisitions to eliminate respiratory motion artifacts. Clinically acceptable breath hold durations are kept in a range of approximately 10–15 s so that the 10 s averaging time SAR limit commonly applies for CMR.

Since the induced SAR per RF input power significantly differs between the BC/4RX and the 4TX/4RX regime and since local  $\text{SAR}_{10g}$  averaged over 10 s confines the applicable flip angle for breath-held cardiac MR protocols, the relevant metric to compare the transmission regimes was chosen to be

$$B_1^+ @\text{SAR limit} = \frac{|B_1^+|}{\sqrt{P_{in}}} * \sqrt{\frac{\text{SAR limit}}{k}} = |B_1^+| * \sqrt{\frac{\text{SAR limit}}{\max(\text{SAR}_{\text{simulation}})}} \tag{3}$$

$k = \max(\text{SAR}_{\text{simulation}})/P_{in}$ ,  $P_{in} = P_{\text{forward}} - P_{\text{reflected}}$ ,  $\text{SAR}_{\text{simulation}}$  and  $B_1^+$  were retrieved from the EMF simulations.  $B_1^+ @\text{SAR limit}$  is proportional to the maximum achievable flip angle  $FA$  within the regulatory limits [2]:  $FA \propto B_1^+ @\text{SAR limit}$ .

It has been shown that local  $\text{SAR}_{10g}$  is a more restrictive measure than whole-body SAR [29, 30]. Consequently for the body RF coil transmission regime an additional protocol with a corrected flip angle  $FA'$  was acquired, which assumes local  $\text{SAR}_{10g}$  limits for the body RF coil

according to:

$$FA' = FA * \delta \tag{4}$$

$$\delta = \sqrt{\frac{\text{local SAR limit}}{\text{whole-body SAR limit}}} * \sqrt{\frac{\text{whole-body SAR}_{\text{Simulation}}}{\max(\text{local SAR}_{\text{Simulation}})}} \approx 0.7 \tag{5}$$

The 1<sup>st</sup> term is given by the IEC guidelines [2], whereas the 2<sup>nd</sup> term was deduced from EMF simulations. Therefore, FA' reflects the maximal achievable flip angle of the body RF coil, if local instead of whole-body SAR limits were applied. As an additional safety margin, the entire study was performed in “normal operating mode” according to the IEC guidelines versus the less restricting “first/second level controlled operating modes”.

### Cardiac MR Volunteer Study

Prior to the volunteer study the four-channel transmit RF coil array underwent thorough safety assessment in line with IEC [2] which was evaluated and duly approved for implementation in clinical studies following certification by a notified body. For the in vivo feasibility study twelve healthy volunteers (age: 43±14 years, BMI: 25±3 kg/m<sup>2</sup>, 8 males) without known history of cardiac diseases underwent CMR at 3T for all RF hardware configurations. This study was approved by the local ethics committee (registration number EA1/151/10, Charité—University Medicine, Berlin, Germany) and conducted according to the principles expressed in the Declaration of Helsinki [31]. Informed written consent was obtained from each volunteer prior to the study. All subjects were in normofrequent sinus rhythm (heart rate 75±12 bpm).

For in vivo transmission field mapping a 2D Bloch-Siebert technique [27, 32] was applied: spatial resolution: 5.3x5.3x6 mm<sup>3</sup>, 4.5 ms Fermi pulse, off-center frequency: 4 kHz, TE/TR = 7.3/80 ms, TA = 15 s. For each subject and transmission regime B<sub>1</sub><sup>+</sup>-maps were acquired for a standard four-chamber (4CV), three-chamber (3CV), two-chamber (2CV) and a short-axis view (SAX) of the heart in end-diastole to eliminate blood flow and motion artifacts. Based on the B<sub>1</sub><sup>+</sup>-maps (actual) flip angle maps were calculated.

Functional imaging of the heart was performed according to a standardized clinical CMR protocol [33–35] using 2D steady-state free precession (SSFP) CINE: spatial resolution: 1.8x1.8x6 mm<sup>3</sup>, FoV: 340x340 mm<sup>2</sup>, τ<sub>RF</sub> = 1.2 ms, RF pulse duration-bandwidth<sub>TX</sub>-product = 1.6, duty cycle = 38%, 30 cardiac phases, TA = 15–18 s (within one breath hold), TE/TR = 1.4/3.2 ms, bandwidth<sub>RX</sub> = 1002 Hz/pixel. No filtering such as zero-filling was performed. For each subject and transmission regime 2D SSFP CINE images were acquired in 4CV, 3CV, 2CV and SAX orientation of the heart.

Due to the short TR, high flip angle and high duty cycle 2D SSFP imaging techniques are SAR confined at 3T which renders it an ideal candidate for the assessment of the SAR performance of the transmission regimes under investigation. To alter the RF duty cycle and the RF power deposition of the 2D SSFP CINE technique, without modifying the RF pulse duration or shape, the repetition time TR was changed by varying the receiver bandwidth BW<sub>RX</sub> from 1532 Hz/pixel to 130 Hz/pixel enabling a TR between 3.1 ms and 8.3 ms, while keeping all other imaging parameters constant with the exception of SNR which scales with 1/√BW<sub>RX</sub>.

For the clinical assessment of each transmission regime left ventricular (LV) chamber quantification was performed with 2D SSFP CINE. For this purpose a parallel stack of short-axis views covering the heart from apex to base with an inter-slice gap of 3 mm was acquired using the imaging parameters outlined in the previous paragraph. For each subject and transmission regime LV end-diastolic volume (LV EDV), LV end-systolic volume (LV ESV), LV ejection



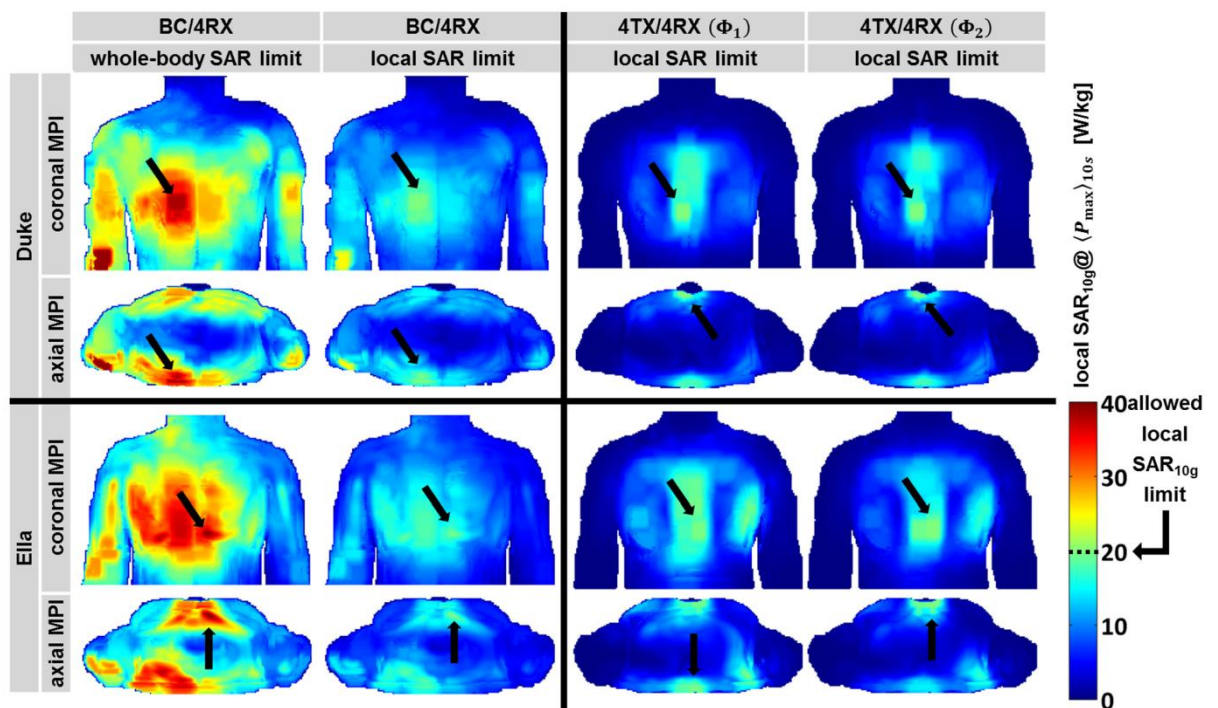
fraction (LV EF) and LV myocardial mass (LV mass) were obtained using CMR42 (Circle Cardiovascular Imaging, Calgary, Canada).

For all in vivo CMR examinations cardiac gating and triggering was achieved with an MR stethoscope [36–39] (EasyACT, MRI.TOOLS GmbH, Berlin, Germany).

## Results

### SAR Simulations

EMF simulations were performed to derive SAR distributions across the upper torso for all transmission regimes. Fig 2 surveys maximum projection images of local SAR<sub>10g</sub> for maximum allowed RF input power (see Table 1) for the human voxel models Duke and Ella. For BC/4RX RF power deposition was found across the entire upper torso with local SAR<sub>10g</sub> hotspots being located around the right elbow (Duke) and the anterior chest (Ella) (Fig 2). Whole-body SAR was found to be 0.0068 W/kg for Duke and Ella for an input power of 1 W. When applying the IEC limits for whole-body SAR the total averaged (10 s) input power was found to be 590 W. When using the local SAR<sub>10g</sub> limits, the RF power needed to be reduced by a factor of ~2 to stay within the IEC limits as summarized in Table 1.



**Fig 2. Simulated local SAR<sub>10g</sub> distributions at maximum applicable input power.** Maximum projection images for voxel model Duke (top) and Ella (bottom) in coronal (1<sup>st</sup> and 3<sup>rd</sup> row) and axial orientation (2<sup>nd</sup> and 4<sup>th</sup> row) are shown. Formations of SAR hotspots can be seen for every transmission setup, with the dominating SAR hotspots being marked by arrows. Note: At the elbow twice the SAR is allowed to avoid a bias in favor of the 4TX/4RX configuration. Immoderate whole-body SAR limits lead to exceedance of local SAR limits (1<sup>st</sup> column). For 4TX/4RX both transmit phase settings  $\Phi_1$  (3<sup>rd</sup> column) and  $\Phi_2$  (4<sup>th</sup> column) yield a local SAR<sub>10g</sub> hotspot located underneath the shared middle conductor of the loop elements, where the currents can add up and the distance between the RF coil array and the body is minimal (1 cm/2 cm for the anterior/posterior part).

doi:10.1371/journal.pone.0161863.g002

**Table 1. SAR and B<sub>1</sub><sup>+</sup>-values derived from EMF simulation.**

used transmission setup		BC/4RX						4TX/4RX (Φ <sub>1</sub> )		4TX/4RX (Φ <sub>2</sub> )		4TX/4RX (Φ <sub>3</sub> )	
applied SAR limit		whole-body SAR		partial-body SAR		local SAR <sub>10g</sub>		local SAR <sub>10g</sub>		local SAR <sub>10g</sub>		local SAR <sub>10g</sub>	
(within 10 s)	[unit]	4 W/kg		4–20 W/kg		20 W/kg		20 W/kg		20 W/kg		20 W/kg	
$k = SAR/P_{in}$	[1/kg]	0.0068	0.0068	0.014	0.017	0.065	0.069	0.43	0.38	0.38	0.40	0.39	x
						(0.082 <sup>*)</sup>							
$\langle P_{max} \rangle_{10s}$	[W]	590	590	890	840	310	290	47	52	53	50	51	x
$std( B_1^+ )/mean( B_1^+ )$	[%]			15	16			32	25	30	19	38 (21 <sup>§</sup> )	x
MOS/SOM (B <sub>1</sub> <sup>+</sup> )	[%]							81	83	80	82	80 (91 <sup>§</sup> )	x
$mean( B_1^+ /\sqrt{P_{in}})$	[μT/√kW]			5.2	6.5			13	16	12	16	12 (15 <sup>§</sup> )	x
$mean( B_1^+ ) @ SAR limit$	[μT]	4.0	5.0	4.9	5.9	2.9	3.5	2.7	3.7	2.9	3.6	2.8 (3.3 <sup>§</sup> )	x

The left/right value of each cell is derived from simulation with voxel model Duke/Ella. For SAR assessment all voxels of the simulation models were used. Please note, that the SAR hotspot at Duke's elbow (\*) is not limiting the applicable input power as twice the local SAR is allowed at the extremities. The 10 s averaged maximum RF input power to reach the SAR limit given by the IEC guideline is denoted by  $\langle P_{max} \rangle_{10s}$ . For B<sub>1</sub><sup>+</sup>-evaluation only voxels covering the voxel model's heart (3D) were considered. The metric std/mean (coefficient of variation) and MOS/SOM of the transmit field reflects the B<sub>1</sub><sup>+</sup>-homogeneity and -efficiency in the target region. The resulting B<sub>1</sub><sup>+</sup>-field inside the heart at the maximum input power is given by  $mean(|B_1^+|) @ SAR limit$ , which is proportional to the maximum achievable flip angle. The ratio between  $|B_1^+| @ local$  to whole-body SAR is approx.  $\delta \approx 0.7$ . For Φ<sub>3</sub> voxel model Duke was simulated only. When calculating the B<sub>1</sub><sup>+</sup> inside an apical SAX (2D), which was subject for generating Φ<sub>3</sub>, the values in parentheses apply.

\*<sup>)</sup> at Duke's elbow

§<sup>)</sup> only voxels within an apical SAX (2D)

doi:10.1371/journal.pone.0161863.t001

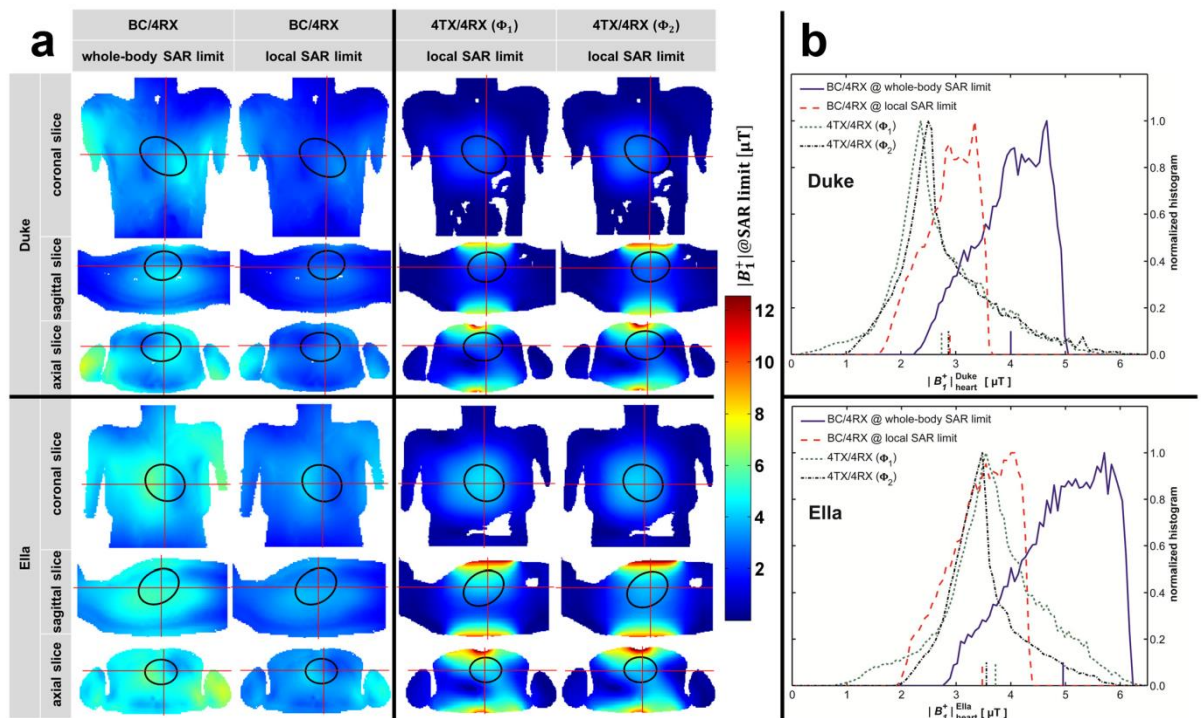
Our findings showed that the whole-body SAR limit of 4 W/kg (within 10 s) puts less RF power deposition constraints onto the body RF coil transmission regime than the local SAR<sub>10g</sub> limit of 20 W/kg (within 10 s). To highlight this difference, 2<sup>nd</sup> column of Fig 2 outlines the SAR<sub>10g</sub>@ $\langle P_{max} \rangle_{10s}$  when applying the local SAR<sub>10g</sub> limits for body RF coil transmission. Different regulatory limits for trunk (20 W/kg within 10 s) and extremities (40 W/kg within 10 s) were considered (e.g. Duke's elbow).

For 4TX/4RX using phase settings Φ<sub>1</sub> and Φ<sub>2</sub> local SAR<sub>10g</sub> was observed to be largest in upper torso areas where the RF coil array conforms best to the upper chest and where the distance between the RF coil and the chest wall is lowest. Other body regions, such as the head, abdomen or arms experienced almost no RF power deposition. Phase setting Φ<sub>1</sub>, which was tailored for B<sub>1</sub><sup>+</sup>-efficiency across the heart without considering local SAR<sub>10g</sub>, shows a maximum local SAR<sub>10g</sub>-hotspot of 0.43 W/kg for Duke and 0.38 W/kg for Ella (P<sub>in</sub> = 1 W) for a region close to the sternum. Phase setting Φ<sub>2</sub> which includes local SAR<sub>10g</sub> optimization over B<sub>1</sub><sup>+</sup>-efficiency, local SAR<sub>10g</sub> assessment yielded a maximum local SAR<sub>10g</sub> of 0.38 W/kg for Duke and 0.40 W/kg for Ella (P<sub>in</sub> = 1 W). For the in vivo measurements the maximum applied input power  $\langle P_{max} \rangle_{10s}$  was 47 W, 50 W and 51 W for 4TX/RX driven with the phase settings Φ<sub>1</sub>, Φ<sub>2</sub> and Φ<sub>3</sub>.

### B<sub>1</sub><sup>+</sup> Simulations

Table 1 shows that the induced SAR/P<sub>in</sub> and B<sub>1</sub><sup>+</sup>/√P<sub>in</sub> significantly differ between the body and the local RF coil regime. B<sub>1</sub><sup>+</sup>@SAR limit (see Eq 3) sets both quantities in relation and thus makes the different RF coil regimes comparable. Fig 3A illustrates the B<sub>1</sub><sup>+</sup>-distributions at the specified SAR limits for a coronal, sagittal and axial slice through Duke's and Ella's heart.

The B<sub>1</sub><sup>+</sup>-pattern obtained for whole-body and local SAR limits (1<sup>st</sup> and 2<sup>nd</sup> column in Fig 3A) are identical but the mean value of B<sub>1</sub><sup>+</sup>@SAR limit differs by the factor  $\delta \approx 0.7$  (Eq 5) in



**Fig 3. Simulated excitation fields at specified SAR limits.** (a)  $B_1^+$ -fields for Duke (top) and Ella (bottom) are derived from EMF simulations for all transmission setups. To guide the eye the orthogonal slices and the borders of the heart are highlighted. 1<sup>st</sup> column: BC/4RX scaled to whole-body SAR limit. 2<sup>nd</sup> column: BC/4RX scaled to local SAR<sub>10g</sub> limit. 3<sup>rd</sup> and 4<sup>th</sup> column: Transmission with 4TX/4RX RF coil ( $\Phi_1$  and  $\Phi_2$ ) scaled to local SAR<sub>10g</sub> limit. The data shown in column 1, 3 and 4 reflect the maximum achievable excitation fields to stay within the safety limits governed by the IEC guidelines [2]. (b) Normalized histograms of the simulated excitation fields obtained for all voxels covering the heart of the human voxel model Duke (top) and Ella (bottom). The mean values of the  $B_1^+$ -distributions are added as colored tick marks on the x-axes. The width of the curves reflects the  $B_1^+$ -homogeneity within the heart. The red and blue curves are shifted horizontally by the factor  $\delta \approx 0.7$ , which represents the RF input power difference of the body RF coil when operating at whole-body and local SAR limit.

doi:10.1371/journal.pone.0161863.g003

favor of the whole-body SAR limit. The simulated transmission fields obtained for 4TX/4RX are depicted in Fig 3A for the phase settings  $\Phi_1$  and  $\Phi_2$ . The  $B_1^+$ -homogeneity across the heart found for  $\Phi_2$  is superior to that observed for  $\Phi_1$ . In particular, the coronal view obtained for Duke and the sagittal view derived from Ella revealed less regions of low  $B_1^+$  across the heart for  $\Phi_2$ .

These findings are highlighted by Fig 3B, which shows  $B_1^+$  histograms for all voxels covering Duke's and Ella's heart. The right tails of the histograms obtained for 4TX/4RX with  $\Phi_1$  and  $\Phi_2$  relate to regions close to the apex. The left tails of the histograms are related to the basal region of the heart and are significantly reduced for  $\Phi_2$  compared to  $\Phi_1$ . The  $B_1^+$ -coefficient of variation (standard deviation/mean) obtained for the  $\Phi_2$  histogram is lower than that of the  $\Phi_1$  histogram, which indicates an improved  $B_1^+$ -homogeneity of  $\Phi_2$  versus  $\Phi_1$ . The mean values of  $B_1^+$ @SAR limit, a measure of  $B_1^+$ -efficiency (ticks on x-axes in Fig 3B) are summarized in Table 1. The difference between the  $B_1^+$  histogram obtained for the body RF coil at whole-body SAR limit and at local SAR<sub>10g</sub> limit (red and blue curves) is due to the factor  $\delta \approx 0.7$ , which translates into a horizontal shift of the  $B_1^+$  histograms.

The loading of the transmit RF coil, i.e. the used voxel model Duke or Ella, was found to have an influence on the RF coil performance. When changing the loads from Duke to Ella the  $B_1^+$ @SAR limit increases by 21% for the body RF coil, 37% for 4TX/4RX RF coil ( $\Phi_1$ ) and 24% for 4TX/4RX RF coil ( $\Phi_2$ ).

### Validation of EMF Simulations in Phantom Experiments

The EMF simulations were validated in phantom experiments. Fig 4 illustrates the simulated and measured  $B_1^+$ -field distributions together with absolute difference maps for a mid-axial slice of the upper torso phantom for BC/4RX and 4TX/4RX ( $\Phi_1$  and  $\Phi_2$ ). Regions with low angle-to-noise-ratios (<1%) were excluded from the comparison using a threshold. For the body RF coil the simulated and measured  $B_1^+$ -field (mean $\pm$ std) was  $4.4\pm 1.2 \mu\text{T}/\sqrt{\text{kW}}$  and  $4.3\pm 1.2 \mu\text{T}/\sqrt{\text{kW}}$ . For the local 4TX/4RX RF coil ( $\Phi_1$ ) the simulated and measured excitation fields yielded  $6.7\pm 3.8 \mu\text{T}/\sqrt{\text{kW}}$  and  $6.5\pm 3.6 \mu\text{T}/\sqrt{\text{kW}}$ , while for  $\Phi_2$  it was  $6.6\pm 3.9 \mu\text{T}/\sqrt{\text{kW}}$  and  $6.4\pm 3.6 \mu\text{T}/\sqrt{\text{kW}}$ .

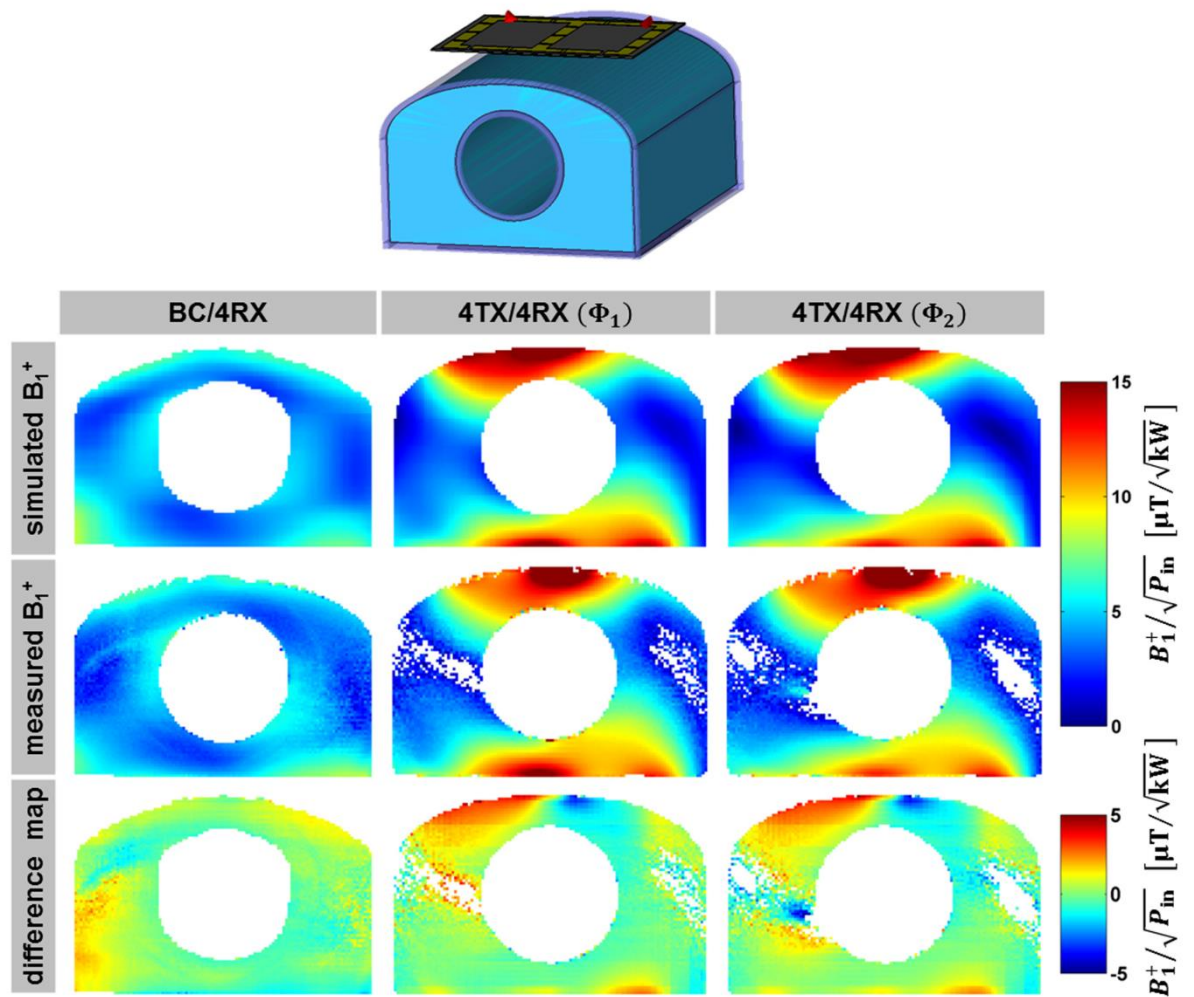
The interference pattern was found to be in good agreement, which demonstrates the validity of both RF coil models and supports the credibility of the SAR simulations.

### Cardiac MR Volunteer Study

Fig 5 provides a synopsis of the CMR volunteer study using all transmission regimes. The repetition time TR was fixed and FA was increased until the SAR limit was reached for each transmission regime. No  $B_1^+$  induced signal voids were found across the entire FoV even for 4TX/4RX transmission. For the 4TX/4RX RF coil a signal intensity gradient can be detected, which manifests itself in an enhanced signal in the right ventricle in the three-chamber view due to its proximity to the surface coil array. The difference between cardiac images obtained for the body RF coil at whole-body SAR limit and at local SAR<sub>10g</sub> limit is due to the flip angle reduction of  $\delta\approx 0.7$ . This change in the transmission field was found to have minor effect on the blood-myocardium contrast due to the relatively flat signal versus flip angle curve of the SSFP technique [35, 40].

For quantification of the transmission fields in vivo  $B_1^+$ -maps were acquired and flip angle maps were calculated. Fig 6 shows a standard four-chamber view of a healthy female subject (34 years, BMI: 25 kg/m<sup>2</sup>) with the contours of the heart being highlighted. The transmission field and the flip angle across the heart were found to be most uniform for the 4TX/4RX regime driven with phase setting  $\Phi_2$ . This regime resulted in signal intensity profiles across the right and left ventricle which are competitive with those obtained for body RF coil transmission (Fig 6). Blood-myocardium contrast was approximately 70 (BC/32RX), 50 (BC/4RX) and 80 (4TX/4RX). This supports ample delineation of endo- and epicardial borders when using the 4TX/4RX configuration.

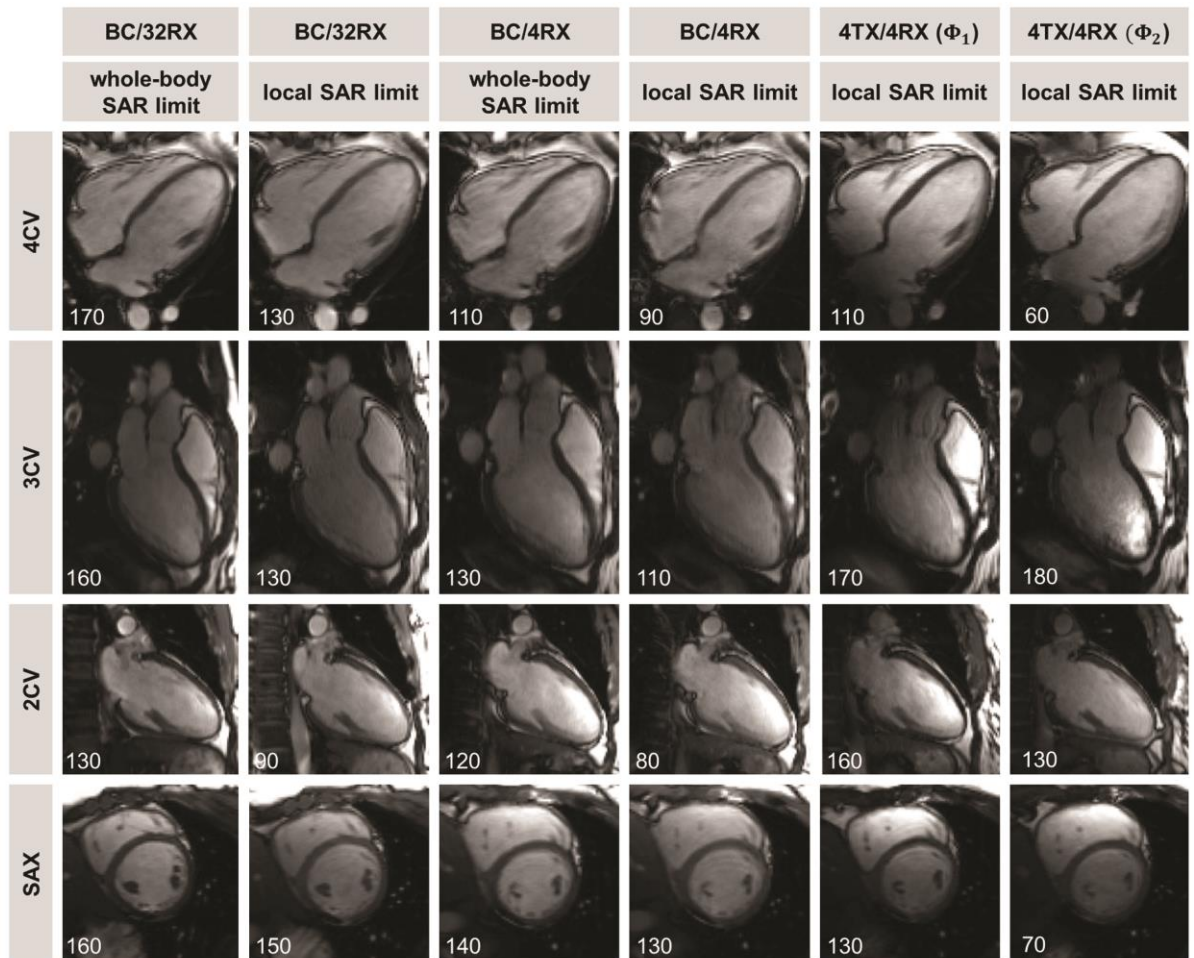
A closer examination of the flip angle maps obtained for all subjects is summarized in Fig 7. Averaged over all subjects and cardiac views the mean $\pm$ std of the flip angle were:  $42^\circ\pm 8^\circ$  for BC/4RX at whole-body SAR limit,  $31^\circ\pm 6^\circ$  for BC/4RX at local SAR<sub>10g</sub> limit,  $33^\circ\pm 12^\circ$  for 4TX/4RX ( $\Phi_1$ ) and  $38^\circ\pm 15^\circ$  for 4TX/4RX ( $\Phi_2$ ). The inter-subject variation was slightly increased for the 4TX/4RX RF coil versus body RF coil transmission (compare Fig 7A and 7B). For cardiac mid-ventricular short-axes, four-chamber and three-chamber views the local 4TX/4RX RF configuration ( $\Phi_2$ ) provided a mean flip angle which was superior to the body RF coil transmission with  $B_1^+$ @local SAR<sub>10g</sub> limit (Fig 7C). For two-chamber views the body RF coil produced a higher mean flip angle versus the 4TX/4RX RF coil.



**Fig 4. Validation of EMF simulations.** Comparison of simulated (1<sup>st</sup> row) and measured (2<sup>nd</sup> row)  $B_1^+$ -maps of a mid-axial slice through a torso phantom (top) filled with a uniform myocardial tissue mimicking solution. Regions with angle-to-noise-ratios lower than 1% were discarded using thresholding. 3<sup>rd</sup> row: Absolute difference maps ( $B_1^+$ simulation -  $B_1^+$ measurement) demonstrating a good agreement between simulations and experiments.

doi:10.1371/journal.pone.0161863.g004

Next, based on the FA-maps shown in Fig 8 the mean flip angle  $FA_{SSFP}$  inside a ROI covering the heart in an apical SAX orientation was set to  $60^\circ$  and  $TR_{SSFP}$  was adjusted to reach the specified SAR limit. For these settings  $SNR_{blood}$  was superior to  $SNR_{blood}$  obtained for the cardiac views used for the LV chamber quantification study as outlined in Fig 8. Due to the efficiency of the 4TX/4RX setup ( $\Phi_3$ ) ( $TR_{min} = 3.8$  ms) a  $TR_{min}$  reduction of 19% or 54% was achieved versus body RF coil transmission at whole-body SAR limit ( $TR_{min} = 4.7$  ms) or at local SAR<sub>10g</sub> limit ( $TR_{min} = 8.3$  ms). The  $TR_{min}$  shortening of the local 4TX/4RX RF coil helped to reduce SSFP banding artifacts and relaxed the constraints on the fidelity of volume-selective  $B_0$ -shimming.



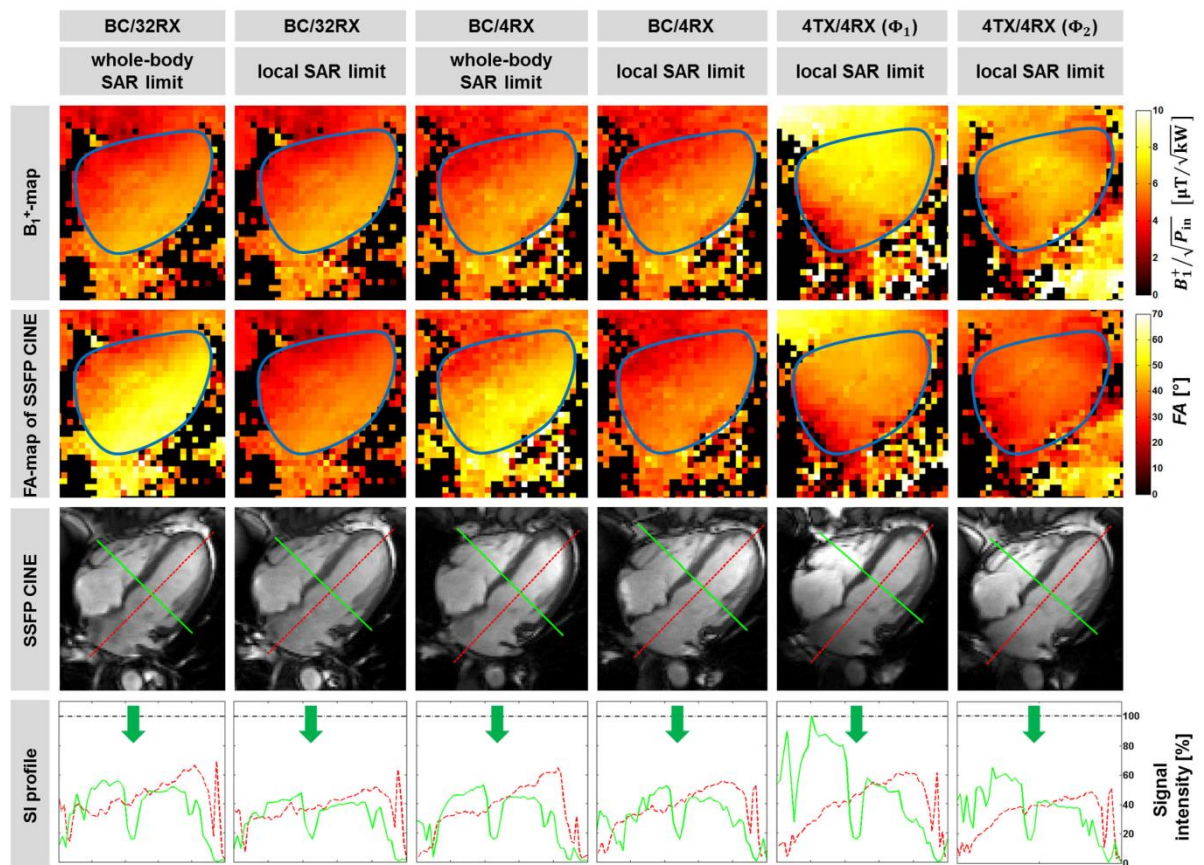
**Fig 5. Cardiac images derived from 2D SSFP CINE.** Shown are end-diastolic phases of the cardiac cycle using standard cardiac views (denoted in the left line) of a healthy subject. The employed transmission regime is outlined on top of the figure for each column. Each image was windowed individually and its SNR within the heart is provided. Column 1, 3, 5 and 6 were acquired with the maximum flip angle allowed by SAR limits governed by the IEC guidelines [2]. Column 2 and 4 were derived by applying local SAR<sub>10g</sub> limits for the body RF coil, which results in 30% reduced flip angle compared to whole-body SAR limit (1<sup>st</sup> and 3<sup>rd</sup> column). Please note the agreement in image quality obtained with the BC/4RX, BC/32RX and the 4TX/4RX RF coil configurations.

doi:10.1371/journal.pone.0161863.g005

The outcome of the cardiac chamber quantification is summarized in Fig 9. In the Bland-Altman analysis the clinical standard setup (BC/32RX) was used as a reference. The values for LV EDV, ESV, EF and mass obtained with the other transmission regimes (BC/4RX and 4TX/4RX) showed no statistically significant differences.

### Discussion

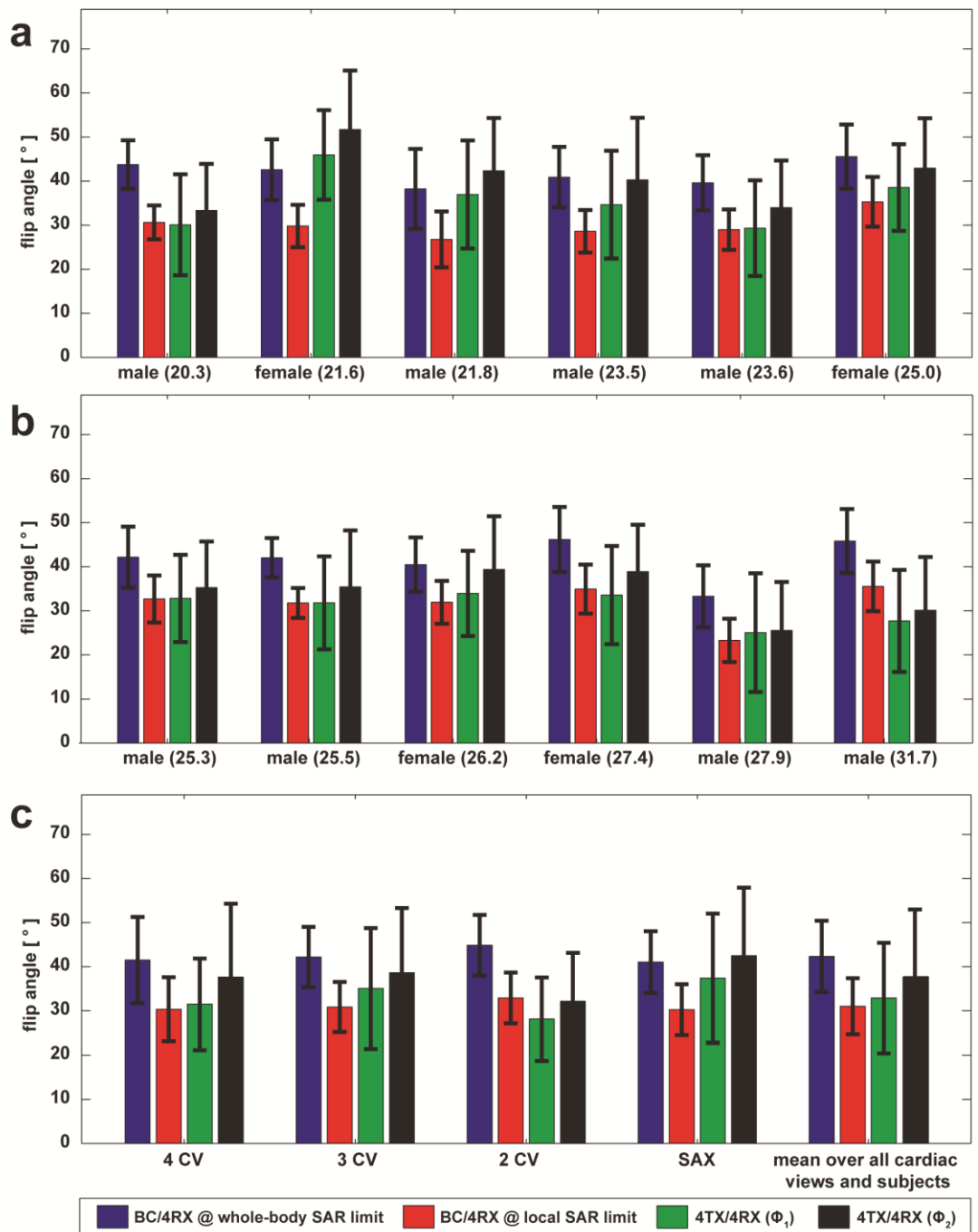
Our simulations and experiments demonstrate that CMR and cardiac chamber quantification at 3T using local four-channel surface RF coil transmission is competitive when benchmarked



**Fig 6. Quantitative analysis of 2D SSFP CINE images for a four-chamber view.** Assessment of in vivo performance of the transmission regimes illustrated for a four-chamber view of the heart of a healthy subject. The employed transmission regimes are outlined on top of the figure for each column. 1<sup>st</sup> row: Measured  $B_1^+$ -maps obtained with a 2D Bloch-Siegert technique. The borders of the heart are highlighted with a bold line. 2<sup>nd</sup> row: Flip angle maps for SSFP CINE at specified SAR limit, which were derived from the  $B_1^+$ -maps. 3<sup>rd</sup> row: 2D SSFP CINE images of the same four-chamber view obtained at end-diastole using maximum flip angles at the specified SAR limit (denoted on top). 4<sup>th</sup> row: Normalized signal intensity profiles along the lines drawn through the four-chamber view shown above. The green arrows indicate the position of the septum. The 1<sup>st</sup> and 3<sup>rd</sup> column represents the maximal applicable flip angle allowed by the IEC guidelines, i.e. the whole-body SAR limit. The 2<sup>nd</sup> and 4<sup>th</sup> column show the situation if local SAR<sub>10g</sub> limits were applied for the body RF coil. The data shown in the 5<sup>th</sup> and 6<sup>th</sup> column were acquired with the 4TX/4RX RF coil with phase setting  $\Phi_1$  and  $\Phi_2$  at local SAR<sub>10g</sub> limits.

doi:10.1371/journal.pone.0161863.g006

against the today's clinical CMR practice of large volume body RF coil transmission. The implications feed into a broad range of applications which stand to benefit from local surface RF coil transmission. CMR of patients equipped with passively conducting implants that constitute an SAR governed contraindication for cardiac MR in case of body RF coil transmission presents an application where local surface RF coil transmission provides a vital alternative over RF body coil excitation. Another example includes interventional CMR employing imaging guided navigation of conducting catheters. Our results showed that the  $B_1^+$ -efficiency benefits of a local transmission coil array versus body coil transmission can be translated into a reduction in the repetition time. This speed gain is conceptually appealing for the pursuit of rapid imaging that supports real time assessment of the heart rather than relying on the interpolation of data



**Fig 7. Analysis of achieved SSFP-flip angles inside the heart of the scanned cohort.** The bar height reflects the mean FA thus the transmit efficiency. The error bars show the standard deviation thus the transmit homogeneity within the ROI. (a) and (b) The flip angle bars

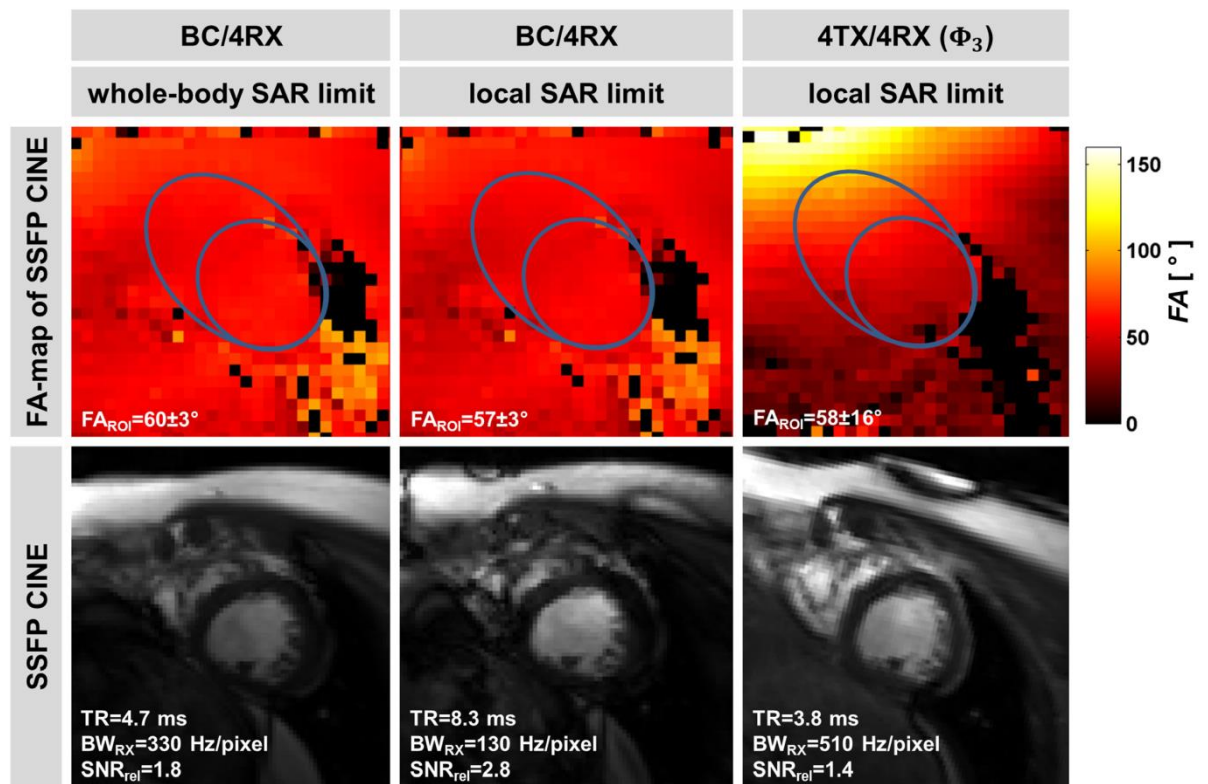


are grouped for each subject of a cohort of 12 subjects. Gender and BMI are provided. Averaging over the cardiac views (4CV, 3CV, 2CV, SAX) was performed. The data show the FA variability between individual subjects, which is minor for the body RF coil but more pronounced for the 4TX/4RX RF coil. (c) Mean flip angle resolved for different cardiac views. For each cardiac view FA data was averaged over all 12 subjects. The 4TX/4RX RF coil configuration yielded a  $B_1^+$ -efficiency which outperformed the body RF coil when operated at local SAR<sub>10g</sub> limit for all standard cardiac views except the two-chamber view. The last bar group shows the flip angle averaged over all subjects and all cardiac views. The 4TX/4RX RF coil configuration using phase setting  $\Phi_2$  yielded a  $B_1^+$ -efficiency which is superior to that obtained for phase setting  $\Phi_1$  while having similar  $B_1^+$ -homogeneity.

doi:10.1371/journal.pone.0161863.g007

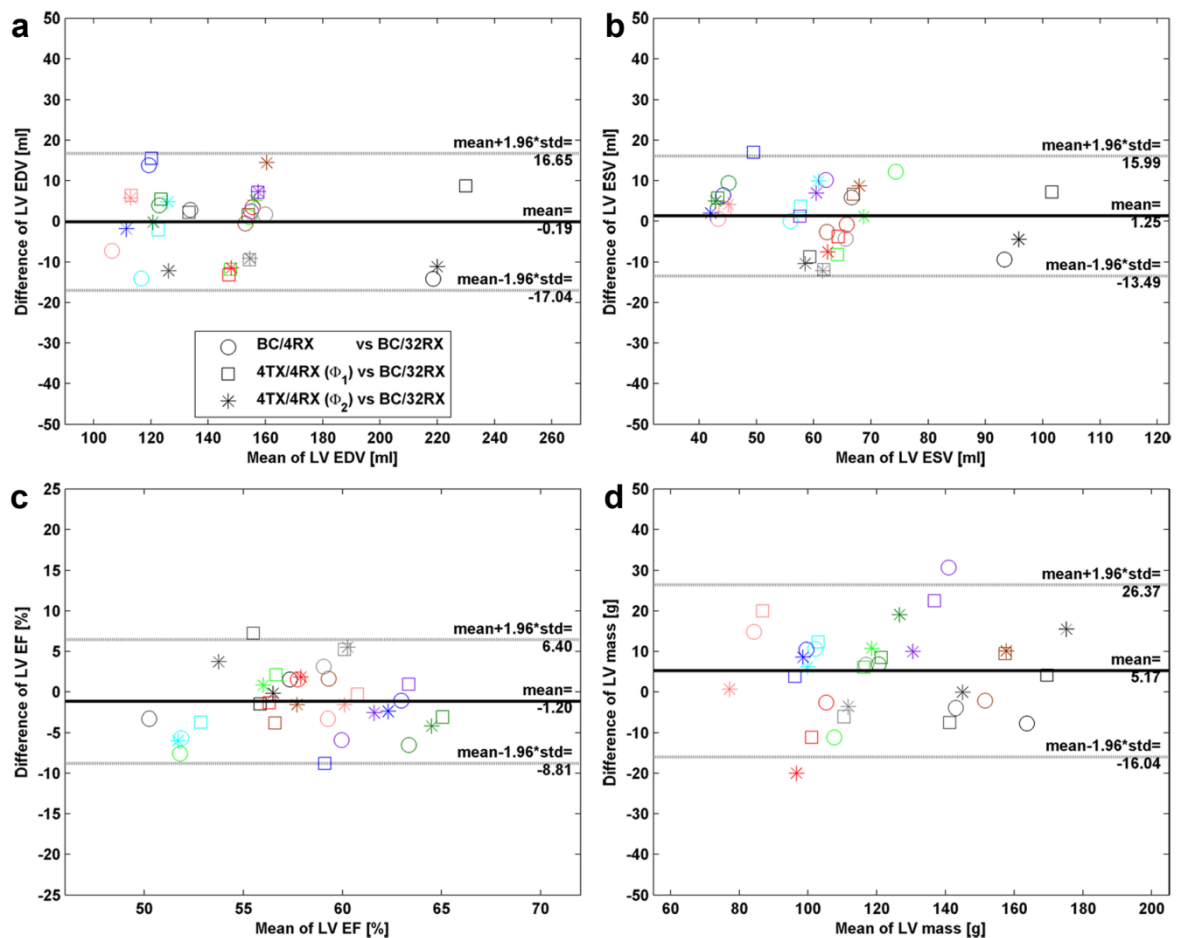
acquired during multiple synchronized heartbeats commonly used in today's CINE acquisitions.

Although whole-body SAR is used in clinical practice to limit the RF power of a body RF coil, local SAR<sub>10g</sub> limits are more restrictive. When applying the maximum power to reach the whole-body SAR limit with the body RF coil (4 W/kg within 10 s) the local SAR<sub>10g</sub> limit (20 W/kg within 10 s) is already exceeded by 90%. This indicates that the local SAR<sub>10g</sub> limits are rather conservative. These results accord with previous reports for RF transmission of the head



**Fig 8. Effects of transmit efficiency on minimal TR<sub>SSFP</sub>.** Shown are flip angle maps and 2D SSFP CINE images of an apical short axis view of the heart. Based on the FA-maps (top row) a target FA of 60° inside the ROI (blue contour) was set for the 2D SSFP CINE technique (bottom row). TR<sub>SSFP</sub> was set to minimum so that SAR reached the denoted limits. When operating the body RF coil at whole-body/local SAR limit, the B<sub>0</sub> pass band of 2D SSFP CINE exhibited a width of 212 Hz/120 Hz. Severe banding artifacts can be seen for BC/4RX @ local SAR limit. When using the 4TX/4RX RF coil ( $\Phi_3$ ) a pass band of 263 Hz was achieved for 2D SSFP. This improvement helps to reduce SSFP related banding artifacts across the heart. The denoted SNR<sub>rel</sub> is relative to the SNR obtained with the SSFP protocol (BW<sub>RX</sub> = 1002 Hz/pixel) used for LV chamber quantification.

doi:10.1371/journal.pone.0161863.g008



**Fig 9. Effects of transmission regime on left ventricle quantification.** Left ventricle (LV) cardiac chamber quantification in a cohort of 11 subjects obtained for all transmission regimes were examined by evaluating a stack of short axis views ranging from apex to base. Bland-Altman plots of (a) LV end-diastolic volume (EDV), (b) LV end-systolic volume (ESV), (c) LV ejection fraction (EF) and (d) LV mass. No statistically significant differences were found between the reference (BC/32RX) and the BC/4RX setup (circles), the 4TX/4RX with phase setting  $\Phi_1$  (squares) or the 4TX/4RX with phase setting  $\Phi_2$  (stars). Data points of the same subject were marked with identical colors.

doi:10.1371/journal.pone.0161863.g009

[29] and the body [30] and underline the relevance of using local SAR<sub>10g</sub> limits for a fair comparison between body RF coil and local surface RF coil transmission.

In our study we performed static  $B_1^+$ -shimming including local SAR<sub>10g</sub> considerations for the local surface RF coil. By employing a SAR-matrix formalism [13] and a compression algorithm [26] the SAR calculation is fast enough to enable reasonable computation times. This allows for an optimization function that balances local SAR<sub>10g</sub>,  $B_1^+$ -homogeneity and -efficiency. With this  $B_1^+$ -shimming approach ( $\Phi_2$ ) larger flip angles with higher  $B_1^+$ -homogeneity can be achieved versus  $B_1^+$ -shimming ( $\Phi_1$ ) without local SAR<sub>10g</sub> considerations. The short distance to the human chest renders the local transmit surface RF coil more efficient than the body RF coil in terms of transmit efficiency  $B_1^+ / \sqrt{P_m}$  as well as  $B_1^+ / \sqrt{\text{local SAR}}$ . This behavior

resulted in an input power of  $P_{in} \approx 170$  W for a flip angle of  $90^\circ$  (1 ms rectangular pulse). To accomplish the same flip angle for body RF coil transmission this input power needed to be increased by a factor  $\approx 6$  ( $P_{in} \approx 1000$  W). As a consequence, current clinical CMR at 3T is driven by 35 kW RFPAs for body RF coil transmission, whereas an 8 kW RFA is sufficient for local TX/RX RF coil arrays.

Our in vivo  $B_1^+$ -mapping results showed that the mean flip angle across the heart is higher for the local surface RF coil array versus body RF coil transmission when the same SAR limits are employed. High transmission efficiency is clinically relevant for CMR, where the constraints dictated by cardiac and respiratory motion limit the viable window of data acquisition so that the use of rapid imaging techniques such as SSFP are mandatory for cardiac chamber quantification.

Our findings have practical implications including MR safety. Body RF coil transmission induces RF power deposition in a large volume including body regions far away from the ROI. This is of clinical relevance for cardiac patients with hip replacement prosthesis (clinical prevalence in an older population of up to 5% [41]) and other abdominal or peripheral implants (for example vena cava filter, clinical prevalence in an older population of up to 4% [42]) which constitute an RF-heating related contraindication if body RF coil transmission is used [43]. Local transmit RF coils dedicated for CMR restrict power deposition primarily to the upper chest and hence permit inclusion of these patients into CMR examinations. Interventional CMR examinations are another application which might benefit from multi-channel RF surface coil rather than body RF coil transmission. The degrees of freedom of a multi-channel surface coil array can be used to generate electric-field-reduced zones without significantly altering the transmit sensitivity [44]. This approach can be tailored to create “null mode” excitations that induce minimal RF current in elongated conductors such as pacemaker leads and conductive guidewires used for interventional procedures, thereby decreasing the RF heating hazard, while still allowing imaging of the surrounding volume [45]. Because implant heating is directly related to E-field distribution, implant-friendly multi-channel RF coil arrays can be designed following this approach. A recently proposed generalized but analytical approach went even further and provided a novel design criterion for multi-channel transmit RF coil arrays based upon RF heating assessment of passive electrically conductive implants including coronary stents and interventional catheters [46].

The limited number of elements used for the local TX/RX RF coil array is an acknowledged limitation of this feasibility study along with the application of RF phase control only. Also, a gradient in signal intensity ranging from the body surface to the center of the upper torso persists for the local TX/RX RF coil configuration. This non-uniformity is due to destructive  $B_1^+$ -interference. It also embodies the transmit and receive sensitivity profile of the array of surface coils. Supporting exquisite control over the electromagnetic fields by modulating amplitude and phase used for excitation of each transmit channel independently together with boosting the number of transmission channels would increase the degrees of freedom. An increased number of RF transmit channels enhances  $B_1^+$ -homogeneity and image quality, as previously demonstrated for 7T TX/RX cardiac optimized RF coil arrays [5–8]. Since the current clinical standard at 3T commonly employs a 32-channel receive surface coil array, the clinical approach would not be hampered but rather improved by including transmit/receive functionality for cardiac optimized RF surface coil arrays. If advanced carefully through joint technical developments and clinical studies this approach bears the potential for paving the way toward making the body RF coil obsolete for cardiac MR. This would significantly benefit patient comfort by increasing the effective bore size from 70 cm diameter to 91 cm. It would also save major manufacturing costs so far allocated for the body RF coil.

The use of multi-channel TX/RX RF surface coil arrays would support subject specific RF shimming to improve  $B_1^+$ -homogeneity as compared to single-channel body RF coil transmission [47, 48]. Possible RF shimming benefits were also reported for multi-channel body RF coil transmission [49, 50]. This has been recently confirmed for parallel transmission with a range of body RF coil arrays, which all outperformed the conventional birdcage body RF coil in all metrics except peak and average power efficiency [51]. The question of the best distance between RF coil and subject in terms of RF power requirements and local SAR deposition was subject to [52]. They report an optimal distance between object and RF coil consisting of 12 to 20 transceiver elements of approx. 6 cm, which is in favor of local surface coil arrays rather than whole-body RF coils. Unlike the majority of the installed base of 3T scanners which are commonly equipped with body coils with only one feeding port and thus only one excitation pattern, a recently introduced two-channel RF body coil affords zoomed excitations [48]. This approach might help to limit RF power deposition away from the area of interest. Yet zoomed imaging with parallel transmission [53] requires dedicated RF pulses which are longer than conventional RF pulses used for 2D slice excitation and hence provide a time penalty. This drawback might be challenging if not prohibiting for short TR acquisitions needed for cardiac MR to balance the competing constraints of spatial and temporal resolution.

To conclude, pursuing local surface RF coil arrays for transmission in cardiac MR is a conceptually appealing alternative to body RF coil transmission. While improved local transmit RF coil designs for 3T still need to be investigated, the clinical potential and implications derived from physical and technical considerations are convincing to put further weight behind these developments.

## Acknowledgments

The authors wish to acknowledge Tobias Frauenrath (formerly Berlin Ultrahigh Field Facility (B.U.F.F.), Max Delbrueck Center for Molecular Medicine in the Helmholtz Association, Berlin, Germany), Wolfgang Renz (Siemens Healthcare, Erlangen, Germany), Franz Schmitt (Lakeside Imagine, Quetzin-Plau Am See, Germany), Patrick Waxmann and Bernd Ittermann (Physikalisch Technische Bundesanstalt (PTB), Braunschweig and Berlin, Germany) for their suggestions in the study concept, valuable technical assistance or helpful discussions. The authors wish to thank Christina Eichhorn (Max Delbrueck Center for Molecular Medicine in the Helmholtz Association, Berlin, Germany) for assistance with the statistical analysis.

## Author Contributions

**Conceived and designed the experiments:** OW LW MD TN.

**Performed the experiments:** OW AE AC.

**Analyzed the data:** OW MD AK TN.

**Contributed reagents/materials/analysis tools:** OW AK HP.

**Wrote the paper:** OW LW MD CO JR AK HP FW TN.

RF coil certification: JR.

## References

1. Spence DK, Wright SM. Comparison of local and global arrays for MRI. *CONCEPT MAGN RESON B*. 2007; 31B(2):86–94. doi: [10.1002/cmrb.20088](https://doi.org/10.1002/cmrb.20088)

2. IEC. Medical electrical equipment. Part 2–33: Particular requirements for the safety of magnetic resonance equipment for medical diagnosis. International Electrotechnical Commission. 2015;60601-2-33 Ed.3.2.
3. IEEE. Recommended Practice for Measurements and Computations of Radio Frequency Electromagnetic Fields With Respect to Human Exposure to Such Fields. Institute of Electrical and Electronics Engineers. 2008;Std C95.3.
4. Snyder CJ, DelaBarre L, Metzger GJ, van de Moortele PF, Akgun C, Ugurbil K, et al. Initial results of cardiac imaging at 7 Tesla. *Magnetic resonance in medicine: official journal of the Society of Magnetic Resonance in Medicine / Society of Magnetic Resonance in Medicine*. 2009; 61(3):517–24. Epub 2008/12/20. doi: [10.1002/mrm.21895](https://doi.org/10.1002/mrm.21895) PMID: [19097233](https://pubmed.ncbi.nlm.nih.gov/19097233/); PubMed Central PMCID: PMC2939145.
5. Dieringer MA, Renz W, Lindel T, Seifert F, Frauenrath T, von Knobelsdorff-Brenkenhoff F, et al. Design and application of a four-channel transmit/receive surface coil for functional cardiac imaging at 7T. *Journal of magnetic resonance imaging: JMRI*. 2011; 33(3):736–41. Epub 2011/03/26. doi: [10.1002/jmri.22451](https://doi.org/10.1002/jmri.22451) PMID: [21438067](https://pubmed.ncbi.nlm.nih.gov/21438067/).
6. Thalhammer C, Renz W, Winter L, Hezel F, Rieger J, Pfeiffer H, et al. Two-dimensional sixteen channel transmit/receive coil array for cardiac MRI at 7.0 T: design, evaluation, and application. *Journal of magnetic resonance imaging: JMRI*. 2012; 36(4):847–57. Epub 2012/06/19. doi: [10.1002/jmri.23724](https://doi.org/10.1002/jmri.23724) PMID: [22706727](https://pubmed.ncbi.nlm.nih.gov/22706727/); PubMed Central PMCID: PMC3445730.
7. Winter L, Kellman P, Renz W, Graessl A, Hezel F, Thalhammer C, et al. Comparison of three multichannel transmit/receive radiofrequency coil configurations for anatomic and functional cardiac MRI at 7.0T: implications for clinical imaging. *European radiology*. 2012; 22(10):2211–20. Epub 2012/06/02. doi: [10.1007/s00330-012-2487-1](https://doi.org/10.1007/s00330-012-2487-1) PMID: [22653280](https://pubmed.ncbi.nlm.nih.gov/22653280/).
8. Graessl A, Renz W, Hezel F, Dieringer MA, Winter L, Oezerdem C, et al. Modular 32-channel transmitter coil array for cardiac MRI at 7.0T. *Magnetic resonance in medicine: official journal of the Society of Magnetic Resonance in Medicine / Society of Magnetic Resonance in Medicine*. 2014; 72(1):276–90. Epub 2013/08/02. doi: [10.1002/mrm.24903](https://doi.org/10.1002/mrm.24903) PMID: [23904404](https://pubmed.ncbi.nlm.nih.gov/23904404/).
9. Oezerdem C, Winter L, Graessl A, Paul K, Els A, Weinberger O, et al. 16-channel bow tie antenna transceiver array for cardiac MR at 7.0 tesla. *Magnetic Resonance in Medicine*. 2016; 75(6):2553–65. doi: [10.1002/mrm.25840](https://doi.org/10.1002/mrm.25840) PMID: [26183320](https://pubmed.ncbi.nlm.nih.gov/26183320/)
10. Niendorf T, Graessl A, Thalhammer C, Dieringer MA, Kraus O, Santoro D, et al. Progress and promises of human cardiac magnetic resonance at ultrahigh fields: a physics perspective. *J Magn Reson*. 2013; 229:208–22. Epub 2013/01/08. doi: [10.1016/j.jmr.2012.11.015](https://doi.org/10.1016/j.jmr.2012.11.015) PMID: [23290625](https://pubmed.ncbi.nlm.nih.gov/23290625/).
11. Saekho S, Yip CY, Noll DC, Boada FE, Stenger VA. Fast-kz three-dimensional tailored radiofrequency pulse for reduced B1 inhomogeneity. *Magnetic resonance in medicine: official journal of the Society of Magnetic Resonance in Medicine / Society of Magnetic Resonance in Medicine*. 2006; 55(4):719–24. Epub 2006/03/10. doi: [10.1002/mrm.20840](https://doi.org/10.1002/mrm.20840) PMID: [16526012](https://pubmed.ncbi.nlm.nih.gov/16526012/); PubMed Central PMCID: PMC3076290.
12. Katscher U, Bornert P, Leussler C, van den Brink JS. Transmit SENSE. *Magnetic resonance in medicine: official journal of the Society of Magnetic Resonance in Medicine / Society of Magnetic Resonance in Medicine*. 2003; 49(1):144–50. Epub 2003/01/02. doi: [10.1002/mrm.10353](https://doi.org/10.1002/mrm.10353) PMID: [12509830](https://pubmed.ncbi.nlm.nih.gov/12509830/).
13. Zhu Y. Parallel excitation with an array of transmit coils. *Magnetic resonance in medicine: official journal of the Society of Magnetic Resonance in Medicine / Society of Magnetic Resonance in Medicine*. 2004; 51(4):775–84. Epub 2004/04/06. doi: [10.1002/mrm.20011](https://doi.org/10.1002/mrm.20011) PMID: [15065251](https://pubmed.ncbi.nlm.nih.gov/15065251/).
14. Rajiah P, Bolen MA. Cardiovascular MR imaging at 3 T: opportunities, challenges, and solutions. *Radiographics: a review publication of the Radiological Society of North America, Inc*. 2014; 34(6):1612–35. Epub 2014/10/14. doi: [10.1148/rg.346140048](https://doi.org/10.1148/rg.346140048) PMID: [25310420](https://pubmed.ncbi.nlm.nih.gov/25310420/).
15. Mueller A, Kouwenhoven M, Naehle CP, Gieseke J, Strach K, Willinek WA, et al. Dual-source radiofrequency transmission with patient-adaptive local radiofrequency shimming for 3.0-T cardiac MR imaging: initial experience. *Radiology*. 2012; 263(1):77–85. Epub 2012/03/01. doi: [10.1148/radiol.11110347](https://doi.org/10.1148/radiol.11110347) PMID: [22371610](https://pubmed.ncbi.nlm.nih.gov/22371610/).
16. Dietrich O, Reiser MF, Schoenberg SO. Artifacts in 3-T MRI: physical background and reduction strategies. *European journal of radiology*. 2008; 65(1):29–35. Epub 2007/12/29. doi: [10.1016/j.ejrad.2007.11.005](https://doi.org/10.1016/j.ejrad.2007.11.005) PMID: [18162353](https://pubmed.ncbi.nlm.nih.gov/18162353/).
17. Frauenrath T, Pfeiffer H, Hezel F, Dieringer MA, Winter L, Graessl A, et al. Lessons Learned from Cardiac MRI at 7.0 T: LV Function Assessment at 3.0 T Using Local Multi-Channel Transceiver Coil Arrays. *Proc ISMRM*. 2012:2803.
18. Kraus O, Winter L, Dieringer MA, Graessl A, Rieger J, Oezerdem C, et al. Local Coil versus Conventional Body Coil Transmission for Cardiac MR: B1+ Efficiency Improvements and Enhanced Blood Myocardium Contrast for 2D CINE SSFP Imaging at 3T. *Proc ISMRM*. 2014:0947.

19. Weinberger O, Winter L, Dieringer MA, Els A, Oezerdem C, Cassara AM, et al. Detailing Local Multi-Channel RF Surface Coil versus Body RF Coil Transmission for Cardiac MRI at 3 Tesla: Which configuration is Winning the Game? *Proc ISMRM*. 2016;2324.
20. Kumar A, Edelstein WA, Bottomley PA. Noise figure limits for circular loop MR coils. *Magnetic resonance in medicine: official journal of the Society of Magnetic Resonance in Medicine / Society of Magnetic Resonance in Medicine*. 2009; 61(5):1201–9. Epub 2009/03/03. doi: [10.1002/mrm.21948](https://doi.org/10.1002/mrm.21948) PMID: [19253376](https://pubmed.ncbi.nlm.nih.gov/19253376/); PubMed Central PMCID: PMC2869245.
21. Wang J. A Novel Method to Reduce the Signal Coupling of Surface Coils for MRI. *Proc ISMRM*. 1996; 14:1434. Epub Proceedings of the.
22. Christ A, Kainz W, Hahn EG, Honegger K, Zefferer M, Neufeld E, et al. The Virtual Family—development of surface-based anatomical models of two adults and two children for dosimetric simulations. *Physics in medicine and biology*. 2010; 55:N23. doi: [10.1088/0031-9155/55/2/N01](https://doi.org/10.1088/0031-9155/55/2/N01) PMID: [20019402](https://pubmed.ncbi.nlm.nih.gov/20019402/)
23. Krishnamurthy N, Zhao T, Ibrahim TS. Effects of receive-only inserts on specific absorption rate, B1+ field, and Tx coil performance. *Journal of magnetic resonance imaging: JMIR*. 2014; 39(2):475–84. Epub 2013/08/06. doi: [10.1002/jmri.24152](https://doi.org/10.1002/jmri.24152) PMID: [23913474](https://pubmed.ncbi.nlm.nih.gov/23913474/).
24. Ullmann P, Junge S, Wick M, Seifert F, Ruhm W, Hennig J. Experimental analysis of parallel excitation using dedicated coil setups and simultaneous RF transmission on multiple channels. *Magnetic resonance in medicine: official journal of the Society of Magnetic Resonance in Medicine / Society of Magnetic Resonance in Medicine*. 2005; 54(4):994–1001. Epub 2005/09/13. doi: [10.1002/mrm.20646](https://doi.org/10.1002/mrm.20646) PMID: [16155886](https://pubmed.ncbi.nlm.nih.gov/16155886/).
25. Graesslin I, Homann H, Biederer S, Bornert P, Nehrke K, Vernickel P, et al. A specific absorption rate prediction concept for parallel transmission MR. *Magnetic resonance in medicine: official journal of the Society of Magnetic Resonance in Medicine / Society of Magnetic Resonance in Medicine*. 2012; 68(5):1664–74. Epub 2012/01/11. doi: [10.1002/mrm.24138](https://doi.org/10.1002/mrm.24138) PMID: [22231647](https://pubmed.ncbi.nlm.nih.gov/22231647/).
26. Eichfelder G, Gebhardt M. Local specific absorption rate control for parallel transmission by virtual observation points. *Magnetic resonance in medicine: official journal of the Society of Magnetic Resonance in Medicine / Society of Magnetic Resonance in Medicine*. 2011; 66(5):1468–76. Epub 2011/05/24. doi: [10.1002/mrm.22927](https://doi.org/10.1002/mrm.22927) PMID: [21604294](https://pubmed.ncbi.nlm.nih.gov/21604294/).
27. Sacolick LI, Wiesinger F, Hancu I, Vogel MW. B1 mapping by Bloch-Siegert shift. *Magnetic resonance in medicine: official journal of the Society of Magnetic Resonance in Medicine / Society of Magnetic Resonance in Medicine*. 2010; 63(5):1315–22. Epub 2010/05/01. doi: [10.1002/mrm.22357](https://doi.org/10.1002/mrm.22357) PMID: [20432302](https://pubmed.ncbi.nlm.nih.gov/20432302/); PubMed Central PMCID: PMC2933656.
28. Carinci F, Santoro D, von Samson-Himmelstjerna F, Lindel TD, Dieringer MA, Niendorf T. Characterization of Phase-Based Methods Used for Transmission Field Uniformity Mapping: A Magnetic Resonance Study at 3.0 T and 7.0 T. *PLOS ONE*. 2013; 8(3):e57982. doi: [10.1371/journal.pone.0057982](https://doi.org/10.1371/journal.pone.0057982) PMID: [23472127](https://pubmed.ncbi.nlm.nih.gov/23472127/)
29. Wang Z, Lin JC, Mao W, Liu W, Smith MB, Collins CM. SAR and temperature: simulations and comparison to regulatory limits for MRI. *Journal of magnetic resonance imaging: JMIR*. 2007; 26(2):437–41. Epub 2007/07/27. doi: [10.1002/jmri.20977](https://doi.org/10.1002/jmri.20977) PMID: [17654736](https://pubmed.ncbi.nlm.nih.gov/17654736/); PubMed Central PMCID: PMC4040525.
30. Yeo DT, Wang Z, Loew W, Vogel MW, Hancu I. Local specific absorption rate in high-pass birdcage and transverse electromagnetic body coils for multiple human body models in clinical landmark positions at 3T. *Journal of magnetic resonance imaging: JMIR*. 2011; 33(5):1209–17. Epub 2011/04/22. doi: [10.1002/jmri.22544](https://doi.org/10.1002/jmri.22544) PMID: [21509880](https://pubmed.ncbi.nlm.nih.gov/21509880/); PubMed Central PMCID: PMC3081105.
31. WMA. Declaration of Helsinki—Ethical Principles for Medical Research Involving Human Subjects. World Medical Association. 2013;<http://www.wma.net/en/30publications/10policies/b3/>.
32. Park DJ, Bangerter NK, Javed A, Kaggie J, Khalighi MM, Morrell GR. A statistical analysis of the Bloch-Siegert B1 mapping technique. *Physics in medicine and biology*. 2013; 58(16):5673–91. Epub 2013/08/01. doi: [10.1088/0031-9155/58/16/5673](https://doi.org/10.1088/0031-9155/58/16/5673) PMID: [23899515](https://pubmed.ncbi.nlm.nih.gov/23899515/); PubMed Central PMCID: PMC3845965.
33. Kramer CM, Barkhausen J, Flamm SD, Kim RJ, Nagel E. Standardized cardiovascular magnetic resonance imaging (CMR) protocols, society for cardiovascular magnetic resonance: board of trustees task force on standardized protocols. *Journal of cardiovascular magnetic resonance: official journal of the Society for Cardiovascular Magnetic Resonance*. 2008; 10:35. Epub 2008/07/09. doi: [10.1186/1532-429X-10-35](https://doi.org/10.1186/1532-429X-10-35) PMID: [18605997](https://pubmed.ncbi.nlm.nih.gov/18605997/); PubMed Central PMCID: PMC2467420.
34. Kramer CM, Barkhausen J, Flamm SD, Kim RJ, Nagel E. Standardized cardiovascular magnetic resonance (CMR) protocols 2013 update. *Journal of cardiovascular magnetic resonance: official journal of the Society for Cardiovascular Magnetic Resonance*. 2013; 15:91. Epub 2013/10/10. doi: [10.1186/1532-429X-15-91](https://doi.org/10.1186/1532-429X-15-91) PMID: [24103764](https://pubmed.ncbi.nlm.nih.gov/24103764/); PubMed Central PMCID: PMC3851953.
35. Schaer M, Kozerke S, Fischer SE, Boesiger P. Cardiac SSFP imaging at 3 Tesla. *Magnetic resonance in medicine: official journal of the Society of Magnetic Resonance in Medicine / Society of Magnetic*

- Resonance in Medicine. 2004; 51(4):799–806. Epub 2004/04/06. doi: [10.1002/mrm.20024](https://doi.org/10.1002/mrm.20024) PMID: [15065254](https://pubmed.ncbi.nlm.nih.gov/15065254/).
36. Frauenrath T, Hezel F, Renz W, d'Orth Tde G, Dieringer M, von Knobelsdorff-Brenkenhoff F, et al. Acoustic cardiac triggering: a practical solution for synchronization and gating of cardiovascular magnetic resonance at 7 Tesla. *Journal of cardiovascular magnetic resonance: official journal of the Society for Cardiovascular Magnetic Resonance*. 2010; 12:67. Epub 2010/11/18. doi: [10.1186/1532-429X-12-67](https://doi.org/10.1186/1532-429X-12-67) PMID: [21080933](https://pubmed.ncbi.nlm.nih.gov/21080933/); PubMed Central PMCID: [PMC2998500](https://pubmed.ncbi.nlm.nih.gov/PMC2998500/).
  37. Becker M, Frauenrath T, Hezel F, Krombach GA, Kremer U, Koppers B, et al. Comparison of left ventricular function assessment using phonocardiogram- and electrocardiogram-triggered 2D SSFP CINE MR imaging at 1.5 T and 3.0 T. *European radiology*. 2010; 20(6):1344–55. Epub 2009/12/17. doi: [10.1007/s00330-009-1676-z](https://doi.org/10.1007/s00330-009-1676-z) PMID: [20013275](https://pubmed.ncbi.nlm.nih.gov/20013275/).
  38. Frauenrath T, Hezel F, Heinrichs U, Kozerke S, Utting JF, Kob M, et al. Feasibility of cardiac gating free of interference with electro-magnetic fields at 1.5 Tesla, 3.0 Tesla and 7.0 Tesla using an MR-stethoscope. *Investigative radiology*. 2009; 44(9):539–47. Epub 2009/08/05. doi: [10.1097/RLI.0b013e3181b4c15e](https://doi.org/10.1097/RLI.0b013e3181b4c15e) PMID: [19652614](https://pubmed.ncbi.nlm.nih.gov/19652614/).
  39. Frauenrath T, Niendorf T, Kob M. Acoustic method for synchronization of Magnetic Resonance Imaging (MRI). *Acta Acustica united with Acustica*. 2008;(94):148–55.
  40. Scheffler K, Lehnhardt S. Principles and applications of balanced SSFP techniques. *European radiology*. 2003; 13(11):2409–18. Epub 2003/08/21. doi: [10.1007/s00330-003-1957-x](https://doi.org/10.1007/s00330-003-1957-x) PMID: [12928954](https://pubmed.ncbi.nlm.nih.gov/12928954/).
  41. Maradit Kremers H, Larson DR, Crowson CS, Kremers WK, Washington RE, Steiner CA, et al. Prevalence of Total Hip and Knee Replacement in the United States. *The Journal of bone and joint surgery American volume*. 2015; 97(17):1386–97. Epub 2015/09/04. doi: [10.2106/JBJS.N.01141](https://doi.org/10.2106/JBJS.N.01141) PMID: [26333733](https://pubmed.ncbi.nlm.nih.gov/26333733/).
  42. Meltzer AJ, Graham A, Kim JH, Connolly PH, Karwowski JK, Bush HL, et al. Clinical, demographic, and medicolegal factors associated with geographic variation in inferior vena cava filter utilization: an interstate analysis. *Surgery*. 2013; 153(5):683–8. Epub 2013/01/12. doi: [10.1016/j.surg.2012.11.005](https://doi.org/10.1016/j.surg.2012.11.005) PMID: [23305597](https://pubmed.ncbi.nlm.nih.gov/23305597/).
  43. Zilberti L, Bottauscio O, Chiampi M, Hand J, Lopez HS, Brühl R, et al. Numerical prediction of temperature elevation induced around metallic hip prostheses by traditional, split, and uniplanar gradient coils. *Magnetic Resonance in Medicine*. 2015; 74(1):272–9. doi: [10.1002/mrm.25687](https://doi.org/10.1002/mrm.25687)
  44. Eryaman Y, Akin B, Atalar E. Reduction of implant RF heating through modification of transmit coil electric field. *Magnetic resonance in medicine: official journal of the Society of Magnetic Resonance in Medicine / Society of Magnetic Resonance in Medicine*. 2011; 65(5):1305–13. Epub 2011/04/19. doi: [10.1002/mrm.22724](https://doi.org/10.1002/mrm.22724) PMID: [21500259](https://pubmed.ncbi.nlm.nih.gov/21500259/).
  45. Etezadi-Amoli M, Stang P, Kerr A, Pauly J, Scott G. Controlling radiofrequency-induced currents in guidewires using parallel transmit. *Magnetic Resonance in Medicine*. 2015; 74(6):1790–802. doi: [10.1002/mrm.25543](https://doi.org/10.1002/mrm.25543) PMID: [25521751](https://pubmed.ncbi.nlm.nih.gov/25521751/)
  46. Winter L, Oberacker E, Ozerdem C, Ji Y, von Knobelsdorff-Brenkenhoff F, Weidemann G, et al. On the RF heating of coronary stents at 7.0 Tesla MRI. *Magnetic resonance in medicine: official journal of the Society of Magnetic Resonance in Medicine / Society of Magnetic Resonance in Medicine*. 2015; 74(4):999–1010. Epub 2014/10/09. doi: [10.1002/mrm.25483](https://doi.org/10.1002/mrm.25483) PMID: [25293952](https://pubmed.ncbi.nlm.nih.gov/25293952/).
  47. Lattanzi R, Sodickson DK, Grant AK, Zhu Y. Electrodynamics constraints on homogeneity and radiofrequency power deposition in multiple coil excitations. *Magnetic resonance in medicine: official journal of the Society of Magnetic Resonance in Medicine / Society of Magnetic Resonance in Medicine*. 2009; 61(2):315–34. Epub 2009/01/24. doi: [10.1002/mrm.21782](https://doi.org/10.1002/mrm.21782) PMID: [19165885](https://pubmed.ncbi.nlm.nih.gov/19165885/); PubMed Central PMCID: [PMC2749671](https://pubmed.ncbi.nlm.nih.gov/PMC2749671/).
  48. Krishnamurthy R, Pednekar A, Kouwenhoven M, Cheong B, Muthupillai R. Evaluation of a subject specific dual-transmit approach for improving B1 field homogeneity in cardiovascular magnetic resonance at 3T. *Journal of cardiovascular magnetic resonance: official journal of the Society for Cardiovascular Magnetic Resonance*. 2013; 15(1):68. Epub 2013/08/08. doi: [10.1186/1532-429X-15-68](https://doi.org/10.1186/1532-429X-15-68) PMID: [23919374](https://pubmed.ncbi.nlm.nih.gov/23919374/); PubMed Central PMCID: [PMC3750927](https://pubmed.ncbi.nlm.nih.gov/PMC3750927/).
  49. Vernickel P, Roschmann P, Findekle C, Ludeke KM, Leussler C, Overweg J, et al. Eight-channel transmit/receive body MRI coil at 3T. *Magnetic resonance in medicine: official journal of the Society of Magnetic Resonance in Medicine / Society of Magnetic Resonance in Medicine*. 2007; 58(2):381–9. Epub 2007/07/27. doi: [10.1002/mrm.21294](https://doi.org/10.1002/mrm.21294) PMID: [17654592](https://pubmed.ncbi.nlm.nih.gov/17654592/).
  50. Childs AS, Malik SJ, O'Regan DP, Hajnal JV. Impact of number of channels on RF shimming at 3T. *MAGMA*. 2013; 26(4):401–10. Epub 2013/01/15. doi: [10.1007/s10334-012-0360-5](https://doi.org/10.1007/s10334-012-0360-5) PMID: [23315236](https://pubmed.ncbi.nlm.nih.gov/23315236/); PubMed Central PMCID: [PMC3728430](https://pubmed.ncbi.nlm.nih.gov/PMC3728430/).
  51. Guerin B, Gebhardt M, Serano P, Adalsteinsson E, Hamm M, Pfeuffer J, et al. Comparison of simulated parallel transmit body arrays at 3 T using excitation uniformity, global SAR, local SAR, and power

- efficiency metrics. *Magnetic resonance in medicine: official journal of the Society of Magnetic Resonance in Medicine / Society of Magnetic Resonance in Medicine*. 2015; 73(3):1137–50. doi: [10.1002/mrm.25243](https://doi.org/10.1002/mrm.25243) PMID: [24752979](https://pubmed.ncbi.nlm.nih.gov/24752979/).
52. Deniz CM, Vaidya MV, Sodickson DK, Lattanzi R. Radiofrequency energy deposition and radiofrequency power requirements in parallel transmission with increasing distance from the coil to the sample. *Magnetic Resonance in Medicine*. 2016; 75(1):423–32. doi: [10.1002/mrm.25646](https://doi.org/10.1002/mrm.25646) PMID: [25752250](https://pubmed.ncbi.nlm.nih.gov/25752250/)
  53. Wu X, Zhang X, Tian J, Schmitter S, Hanna B, Strupp J, et al. Comparison of RF body coils for MRI at 3 T: a simulation study using parallel transmission on various anatomical targets. *NMR in biomedicine*. 2015; 28(10):1332–44. doi: [10.1002/nbm.3378](https://doi.org/10.1002/nbm.3378) PMID: [26332290](https://pubmed.ncbi.nlm.nih.gov/26332290/)



## **Lebenslauf**

Mein Lebenslauf wird aus datenschutzrechtlichen Gründen in der elektronischen Version meiner Arbeit nicht veröffentlicht.

Mein Lebenslauf wird aus datenschutzrechtlichen Gründen in der elektronischen Version meiner Arbeit nicht veröffentlicht.

## Komplette Publikationsliste

### Publikationen in Fachzeitschriften

1. **O. Weinberger**, L. Winter, M. A. Dieringer, A. Els, C. Oezerdem, J. Rieger, A. Kuehne, A. M. Cassara, H. Pfeiffer, F. Wetterling, and T. Niendorf  
*Local Multi-Channel RF Surface Coil Versus Body RF Coil Transmission for Cardiac Magnetic Resonance at 3 Tesla: Which Configuration Is Winning the Game?*  
PLOS ONE, 11 (2016), e0161863.  
**Impact Factor: 3.057**
2. M. N. Voelker, O. Kraff, D. Brenner, A. Wollrab, **O. Weinberger**, M. C. Berger, S. Robinson, W. Bogner, C. Wiggins, R. Trampel, T. Stocker, T. Niendorf, H. H. Quick, D. G. Norris, M. E. Ladd, and O. Speck  
*The Traveling Heads: Multicenter Brain Imaging at 7 Tesla*  
MAGMA, 29 (2016), 399-415.  
**Impact Factor: 2.638**
3. C. Oezerdem, L. Winter, A. Graessl, K. Paul, A. Els, **O. Weinberger**, J. Rieger, A. Kuehne, M. A. Dieringer, F. Hezel, D. Voit, J. Frahm, and T. Niendorf  
*16-Channel Bow Tie Antenna Transceiver Array for Cardiac MR at 7.0 Tesla*  
Magn Reson Med, 75 (2016), 2553-65.  
**Impact Factor: 3.782**
4. S. Klix, A. Els, K. Paul, A. Graessl, C. Oezerdem, **O. Weinberger**, L. Winter, C. Thalhammer, T. Huelnhagen, J. Rieger, H. Mehling, J. Schulz-Menger, and T. Niendorf  
*On the Subjective Acceptance During Cardiovascular Magnetic Resonance Imaging at 7.0 Tesla*  
PLOS ONE, 10 (2015), e0117095.  
**Impact Factor: 3.057**

5. T. Lindner, S. Langner, A. Graessl, J. Rieger, M. Schwerter, M. Muhle, D. Lysiak, **O. Kraus**, J. Wuerfel, R. F. Guthoff, K. Falke, S. Hadlich, P. C. Krueger, N. Hosten, T. Niendorf, and O. Stachs  
*High Spatial Resolution in Vivo Magnetic Resonance Imaging of the Human Eye, Orbit, Nervus Opticus and Optic Nerve Sheath at 7.0 Tesla*  
Exp Eye Res, 125 (2014), 89-94.  
**Impact Factor: 2.998**
  
6. T. Niendorf, A. Graessl, C. Thalhammer, M. A. Dieringer, **O. Kraus**, D. Santoro, K. Fuchs, F. Hezel, S. Waiczies, B. Ittermann, and L. Winter  
*Progress and Promises of Human Cardiac Magnetic Resonance at Ultrahigh Fields: A Physics Perspective*  
J Magn Reson, 229 (2013), 208-22.  
**Impact Factor: 2.889**

## Internationale Konferenzbeiträge

1. **O. Weinberger**, L. Winter, M. A. Dieringer, A. Els, C. Oezerdem, A. M. Cassara, H. Pfeiffer, and T. Niendorf  
*Detailing Local Multi-Channel RF Surface Coil Versus Body RF Coil Transmission for Cardiac MRI at 3 Tesla: Which Configuration Is Winning the Game?*  
Proc. ISMRM, 24 (2016), 2324.
2. M. Voelker, O. Kraff, D. Brenner, A. Wollrab, **O. Weinberger**, M. Berger, S. Robinson, W. Bogner, C. Wiggins, R. Trampel, T. Stöcker, T. Niendorf, H. Quick, D. Norris, M. Ladd, and O. Speck  
*The Traveling Heads: Qualitative and Quantitative Evaluation of Multicenter Brain Imaging at 7 Tesla*  
Proc. ISMRM, 24 (2016), 3529.
3. S. Klix, A. Els, K. Paul, A. Graessl, C. Oezerdem, **O. Weinberger**, L. Winter, C. Thalhammer, T. Huelnhagen, J. Rieger, H. Mehling, J. Schulz-Menger, and T. Niendorf  
*On the Subjective Acceptance During Cardiovascular Magnetic Resonance Imaging at 7.0 Tesla*  
Proc. ISMRM, 23 (2015), 1850.
4. M. Voelker, O. Kraff, J. Stadler, D. Brenner, R. Trampel, M. Berger, **O. Weinberger**, K. Buckenmaier, A. Brechmann, T. Stoecker, H. Moeller, T. Niendorf, B. Ittermann, K. Scheffler, D. Norris, O. Speck, and M. Ladd  
*Performance Assessment and Comparison of Seven UHF MRI Systems Using a Dedicated Quality Assurance Protocol*  
Proc. ISMRM, 23 (2015), 4492.

5. **O. Kraus**, L. Winter, M. A. Dieringer, A. Graessl, J. Rieger, C. Oezerdem, F. Hezel, A. Kuehne, P. Waxmann, H. Pfeiffer, and T. Niendorf  
*Local Coil Versus Conventional Body Coil Transmission for Cardiac MR: B1+ Efficiency Improvements and Enhanced Blood Myocardium Contrast for 2D Cine SSFP Imaging at 3T*  
Proc. ISMRM, 22 (2014), 0947.
6. F. Hezel, P. Kellman, L. Winter, **O. Kraus**, K. Fuchs, and T. Niendorf  
*Towards Myocardial T2\* Mapping at 7.0 T: Assessment and Implications of Static Magnetic Fields Variations*  
Proc. ISMRM, 21 (2013), 1384.
7. F. Hezel, P. Kellman, K. Fuchs, L. Winter, **O. Kraus**, and T. Niendorf  
*Coronary MR Angiography at 7.0 Tesla Using 3D Fat-Water Separated Imaging and a 8 Channel Array of Bowtie Dipole Transceivers: A Feasibility Study*  
Proc. ISMRM, 21 (2013), 1296.
8. K. Fuchs, F. Hezel, L. Winter, C. Oezerdem, A. Graessl, M. Dieringer, **O. Kraus**, and T. Niendorf  
*Feasibility of Cardiac Fast Spin Echo Imaging at 7.0 T Using a Two-Dimensional 16 Channel Array of Bowtie Transceivers*  
Proc. ISMRM, 21 (2013), 1412.
9. M. A. Dieringer, M. Deimling, K. Fuchs, L. Winter, **O. Kraus**, F. von Knobelsdorff-Brenkenhoff, J. Schulz-Menger, and T. Niendorf  
*Blood/Myocardium Contrast-to-Noise Ratio for Cardiac Morphology and Function Imaging Increases with Field Strength*  
Proc. ESMRMB, 26 (2013).
10. **O. Kraus**, M. A. Dieringer, F. Hezel, L. Winter, A. Graessl, C. Oezerdem, and T. Niendorf  
*2D Cine SSFP Imaging at 7.0T Using 8-Channel Bowtie Antenna Transceiver Arrays: A Cardiac MR Feasibility Study*  
Proc. ISMRM, 21 (2013), 927

## **Danksagung**

Ich danke meinem Betreuer Prof. Dr. Thoralf Niendorf mir die Möglichkeit zu dieser Promotion gegeben zu haben und für die fachliche Führung, sowie die entgegengebrachte Geduld.

Meinen Kollegen von der „Berlin Ultrahigh Field Facility (B.U.F.F.)“ gebührt besonderer Dank. Ohne deren tatkräftige Unterstützung auf allen Ebenen wäre diese Arbeit nicht möglich gewesen. Insbesondere möchte ich mich ganz herzlich bei Celal, Lukas, Andreas, Matthias und Till für die große Hilfsbereitschaft bedanken.

Bei allen Kooperationspartnern von Charité, Siemens, MRI.TOOLS und der Physikalisch-Technischen Bundesanstalt (PTB) möchte ich mich für den wissenschaftlichen Input, die zahlreichen Diskussionen und allgemein für die gelungene Zusammenarbeit bedanken.

Besonderen Dank gilt meiner Familie und meiner Frau für den emotionalen Beistand. Nur durch euren starken Rückhalt konnte ich diese Arbeit zum Abschluss bringen.

Ganz besonders möchte ich mich bei meiner Tochter bedanken, die mir eine neue Sicht auf die Dinge ermöglicht hat. Daher widme ich ihr diese Dissertation.