



Abb. 5  
„The Priory Gate“  
The Leasowes

Abb. 6  
„The Priory Pool“  
The Leasowes



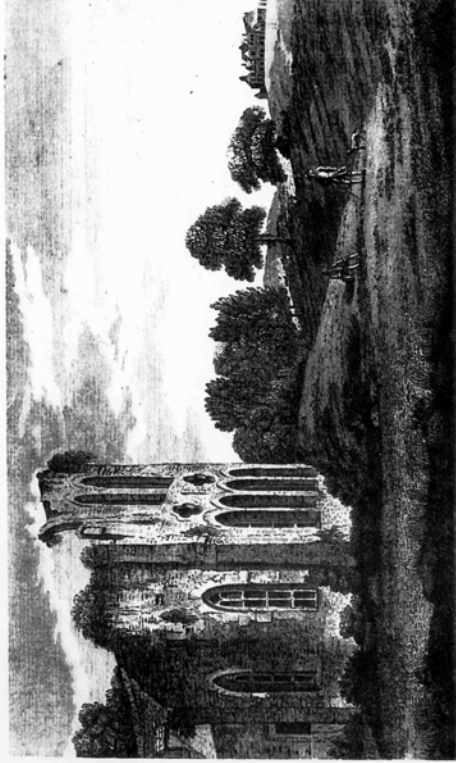
Abb. 7 und 8  
„The Priory“,  
The Leasowes

Abb. 9  
„The Priory“,  
Foto ca. 1935



THE LEASOWES PRIORY. 1

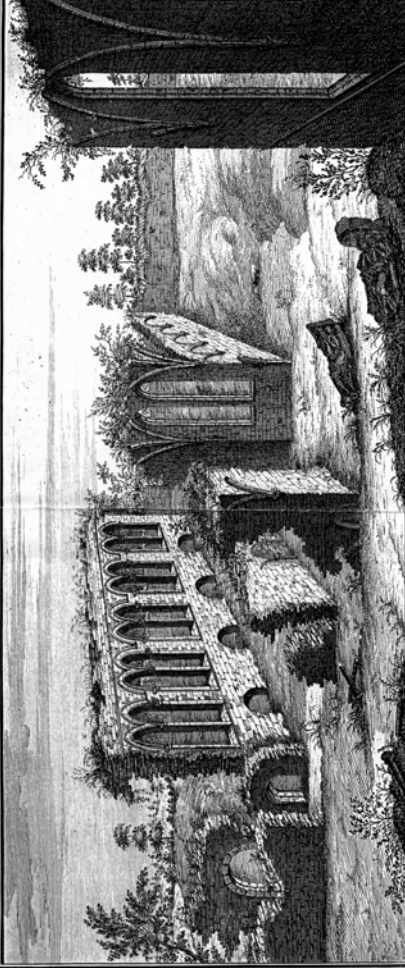




*View of LEASOWES near Malpas-town in SHROPSHIRE, including the Priory & Seat of the late Willm. Monastere Cap.*

Abb. 10  
"The Priory", The Leasowes

THE EAST VIEW OF HALE-SOWEN ABBY. IN THE COUNTY OF SALOP.



HALES or HALE-SOWEN was founded by Peter de Rupibus Bishop of Winchester (who was also Lord Chief Justice) & John having in the 16. year of his Reign given him for this Purpose, the Manor and Advowson of the church of Hales. It was a Monastery of the Premonstratensian Order: their Estate was conveyed to them by R. Hen. III. It received afterwards many additional Benefactions from several Bishops, and others. — The present Owner is J. Tho: Littleton Esq: —  
— An. 1727. No. 42. 2 Days, 327. 43. 6. 1. 1727.

Abb. 11  
Ruinen der St. Mary's Abtei, Halesowen, um 1730  
Die Abtei stammt aus dem 13. Jahrhundert

Abb. 12  
Gotische Stallanlagen der Leasowes

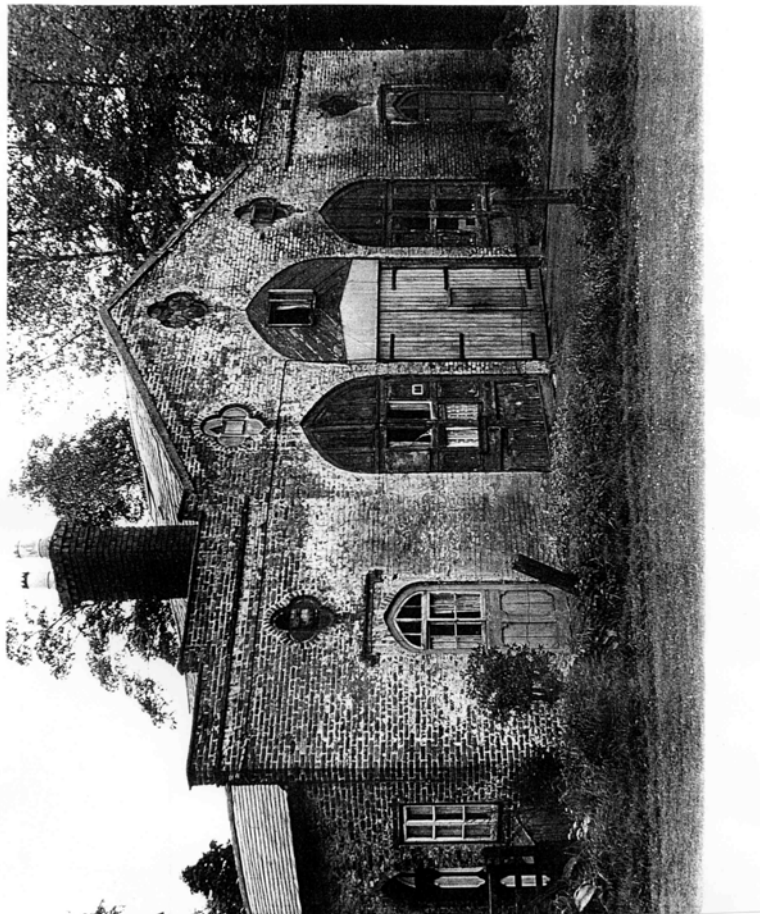


Abb. 13  
William Somervilles Urne, The Leasowes

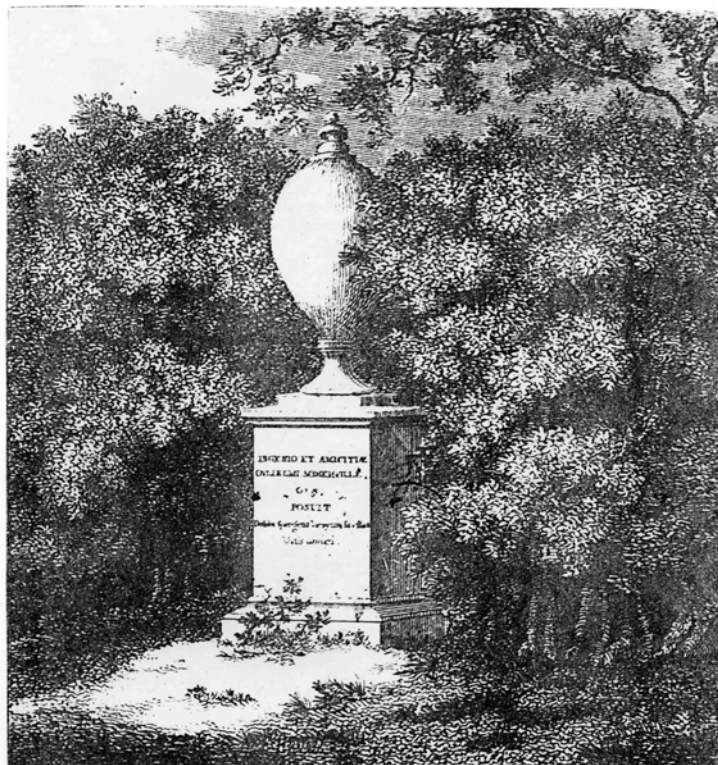


Abb. 14  
William Somervilles Urne, The Leasowes



Abb. 15  
William Somerville



WILLIAM SOMERVILLE THE POET  
(DIED 17 JULY, 1742)

Abb. 16  
Torbogen,  
The Leasowes



Abb. 17  
Grundriss des Lord Stamford gewidmeten  
Wurzelhäuschens



Abb. 18  
Urne "Genio Loci", The Leasowes

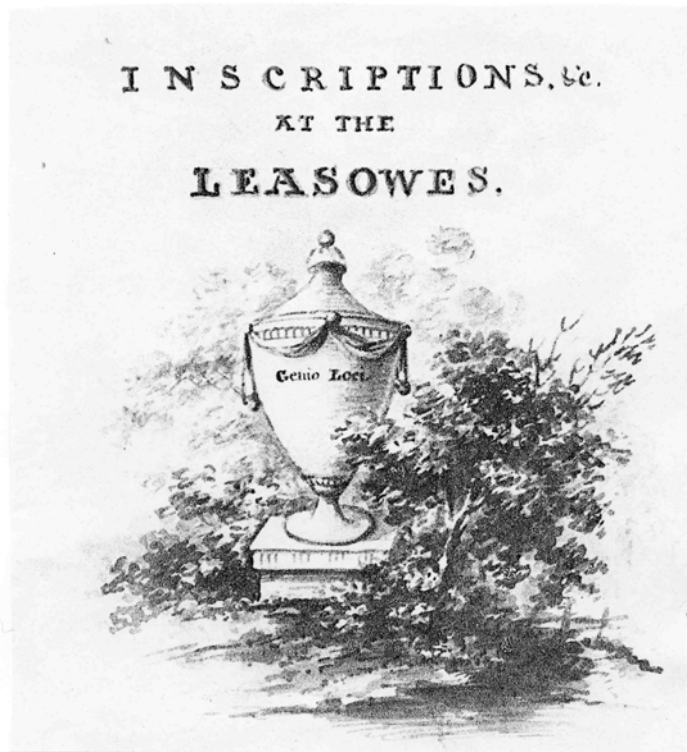
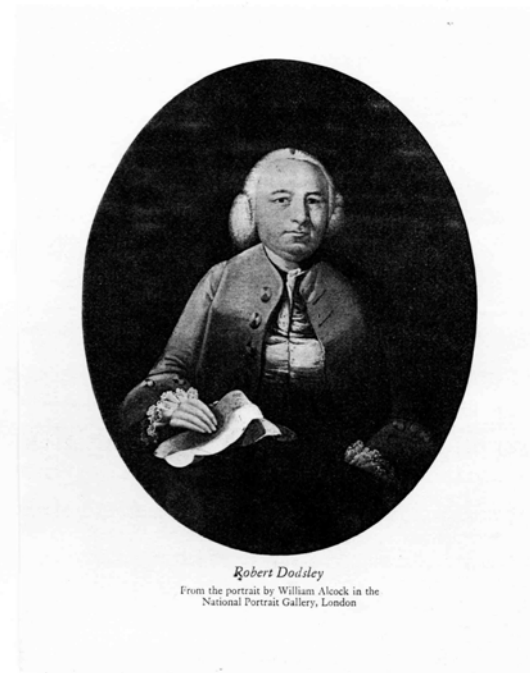


Abb. 19  
Robert Dodsley



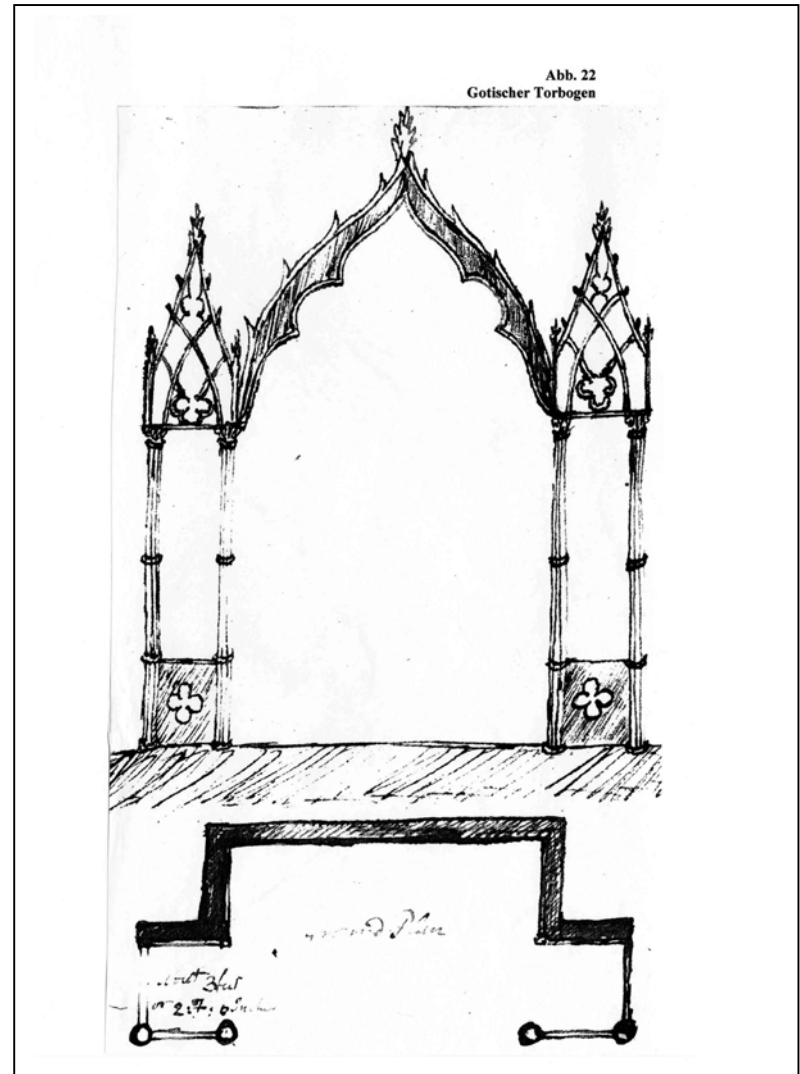
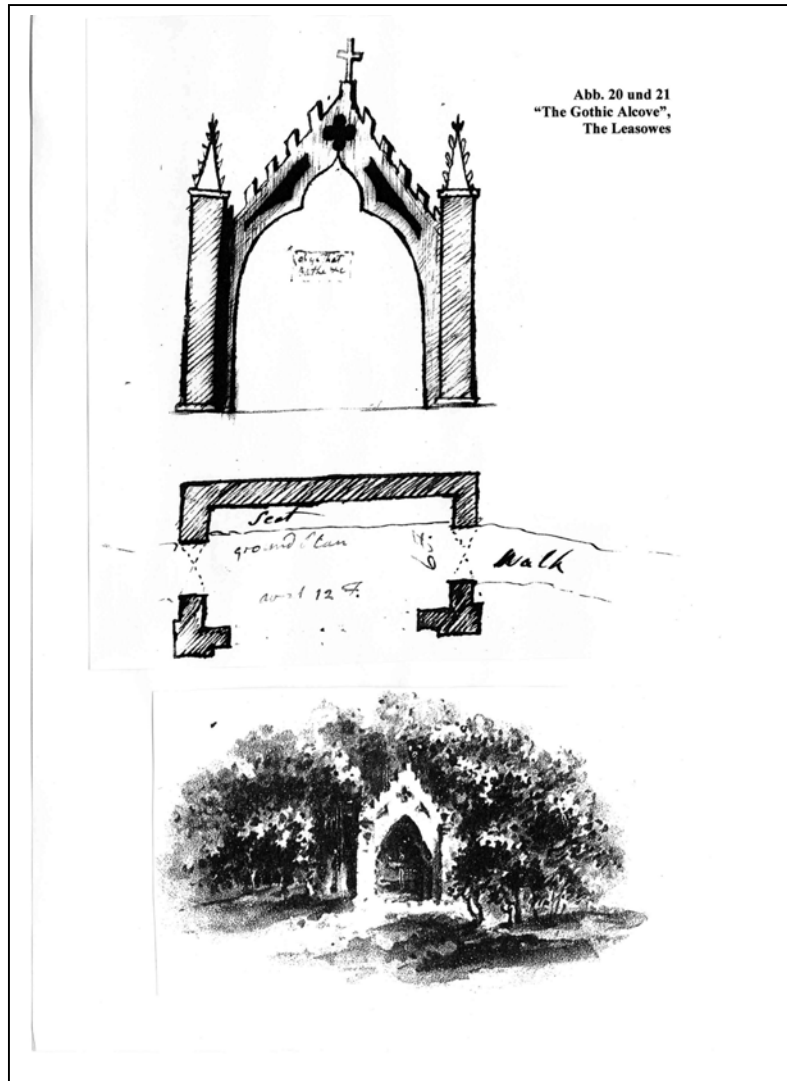






Abb. 23 und 24  
Joseph Spence



REV. JOSEPH SPENCE, AUTHOR OF THE WELL-KNOWN *ASCUSOPOLIA*,  
AND DOUGLEY'S PATRON AND LIFE-LONG FRIEND



Abb. 25  
Sommerhaus auf der  
Insel im "Beech Water",  
The Leasowes



Abb. 26  
Insel im "Beech Water",  
The Leasowes



Abb. 27  
"The Lover's Walk",  
The Leasowes

Abb. 28  
Maria Dolman  
gewidmete Urne,  
The Leasowes

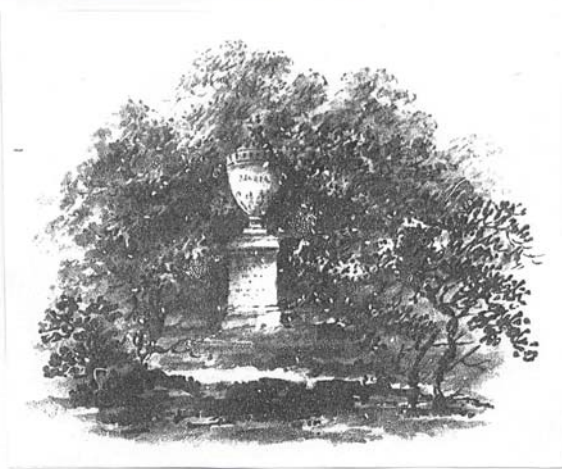


Abb. 29  
"Gothic Seat",  
The Leasowes



Abb. 30  
"Gothic Screen",  
The Leasowes





Abb. 31  
"Temple of Pan"  
The Leasowes

Abb. 32  
Ornament am Pan-Tempel,  
The Leasowes



Pan primus calamos cetera conjungere plures  
Edocuit : Pan citrat oves, oviumque magistros.



Abb. 33  
Sicht von der Terrasse,  
The Leasowes

Abb. 34  
George Lord Lyttelton





Abb. 35 und 36  
„Virgil's Grove“,  
The Leasowes



Abb. 37  
Obelisk in „Virgil's Grove“,  
The Leasowes



GENIO P. VIRGILII MARONIS  
LAPIS ISTE CVM LVCO  
SACER ESTO.

---

Abb. 38  
"Virgil's Grove"  
in einem Aquarell von Shenstone



Abb. 39  
Urne für James Thomson  
Entwurf von William Shenstone, nicht ausgeführt



Abb. 40  
 „Virgil's Grove“, The Leasowes  
 Stich von James Mason

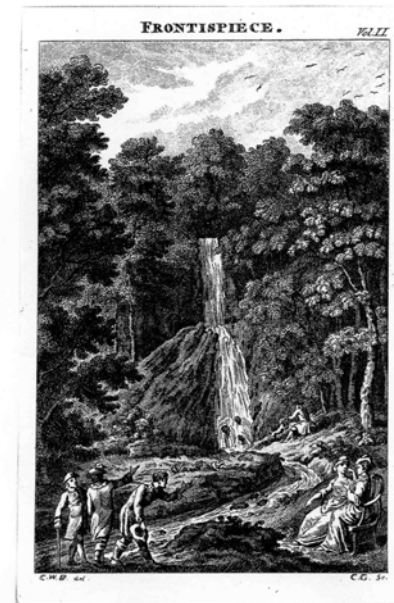
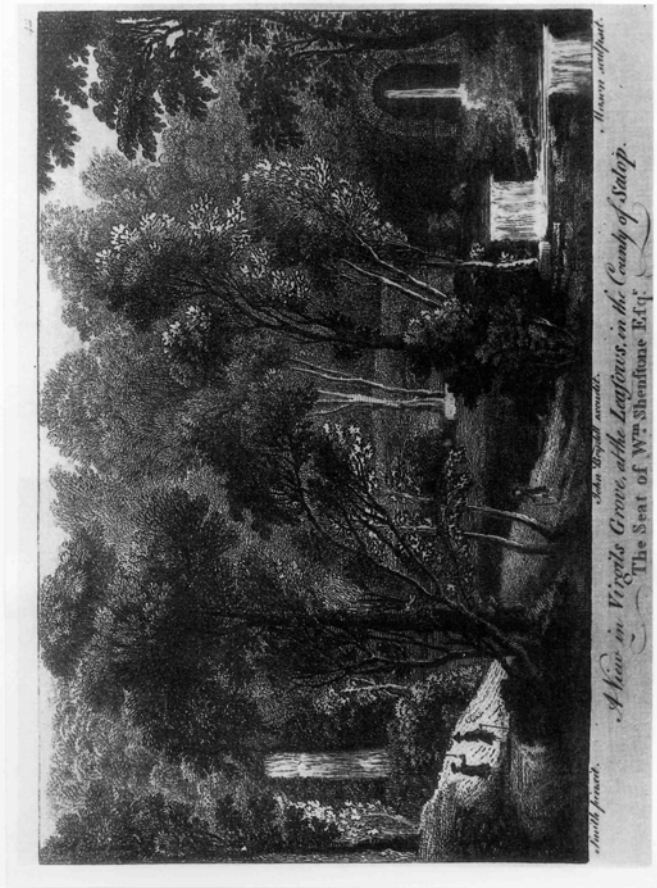


Abb. 41  
 Wasserfall,  
 Buchillustration zu  
 „Columella“  
 von Richard Graves

Abb. 42  
 Buchillustration zu  
 Shenstones Ode  
 „Rural Elegance“



Abb. 43  
Richard Graves

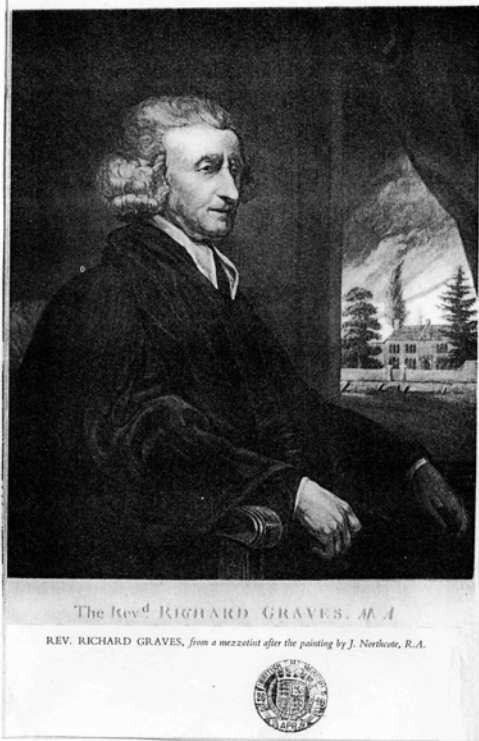


Abb. 44  
Richard Graves





Abb. 45  
 William Shenstones Wohnhaus,  
 The Leasowes

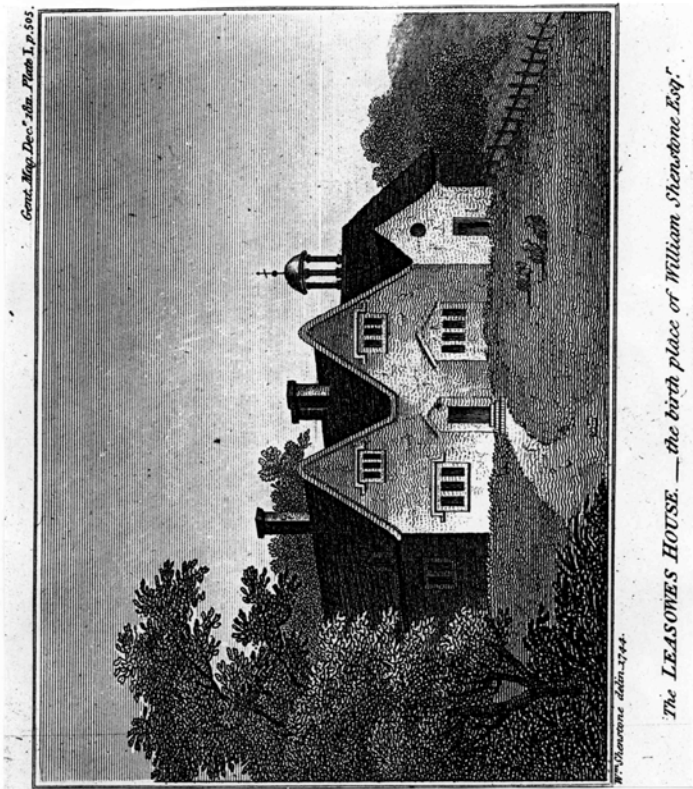


Abb. 46 Ansicht „The Leasowes“ mit Shenstones Wohnhaus

Abb. 47 Ansicht der „Leasowes“ heute



Abb. 48  
Ansicht „The Leasowes“ mit dem nach  
Shenstones Tod erbauten Wohnhaus

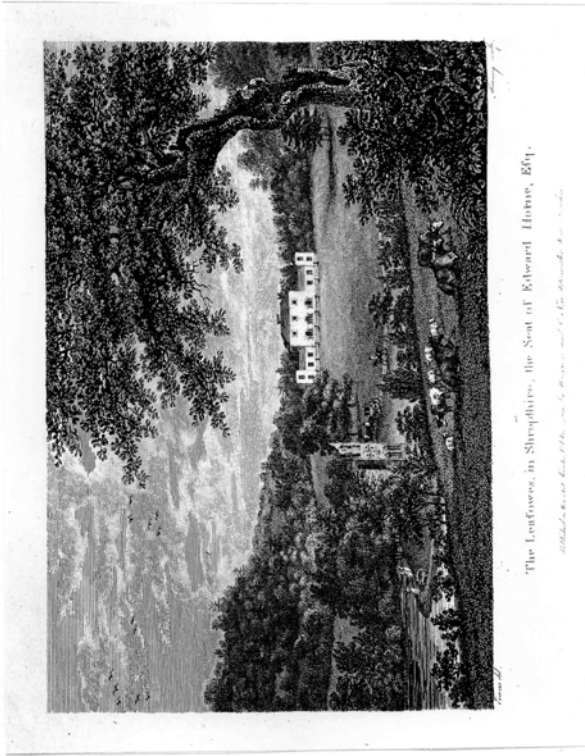


Abb. 49  
Ansicht „The Leasowes“ als Weidefarm

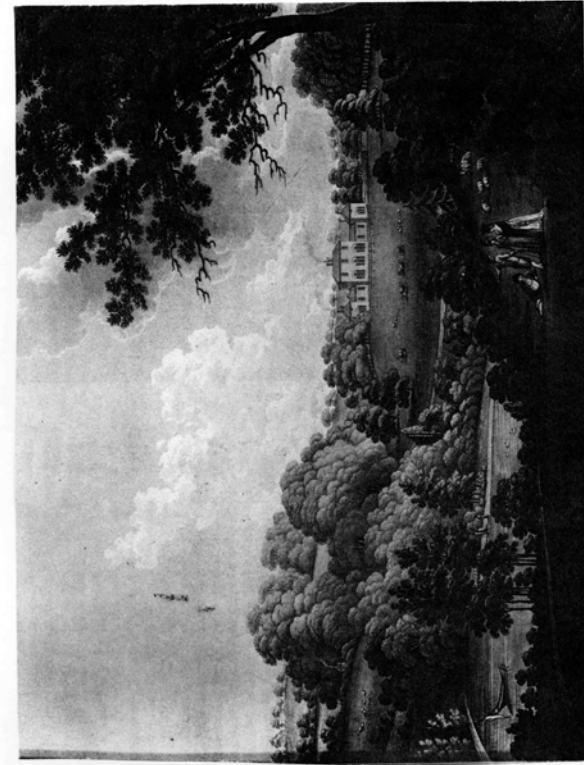


Abb. 50  
„The Leasowes“  
Aquarell von William Shenstone



Abb. 51  
Sichtachse mit dem  
Kirchturm von Halesowen,  
The Leasowes

Abb. 52  
Tanzender Faun,  
Nachbildung der antiken  
Statue aus dem Haus  
des Fauns in Pompeji  
Römische Bäder, Potsdam



Abb. 53  
Venus Pudica

Abb. 228  
Zeichnungen von Parnell  
Beispiele für die Anordnung von Gartensitzen auf den Leasowes  
in Bezug zu den sie umgebenden Pflanzungen

