

Architektursprache von Luxushotels in Dubai, VAE

Band 2

ABBILDUNGSTEIL

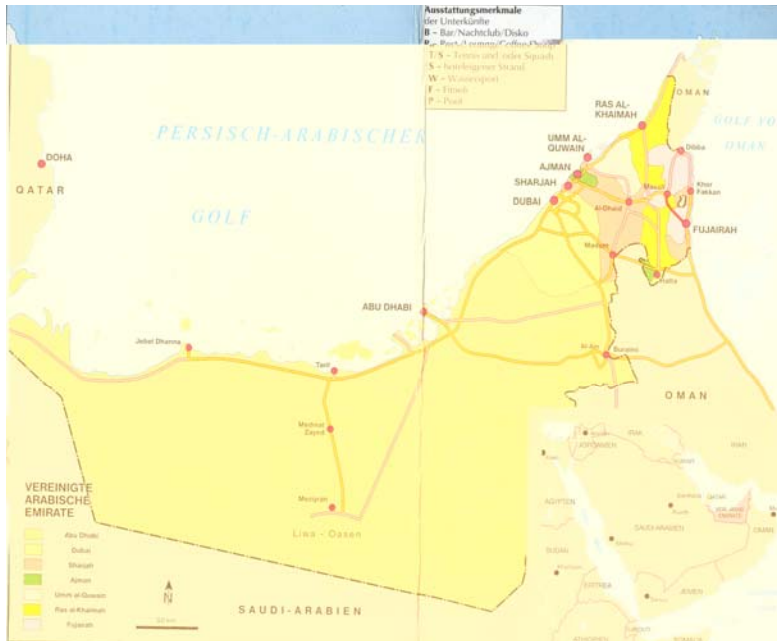


Abb. 1



Abb. 2



Abb. 3



Abb. 4



Abb. 5

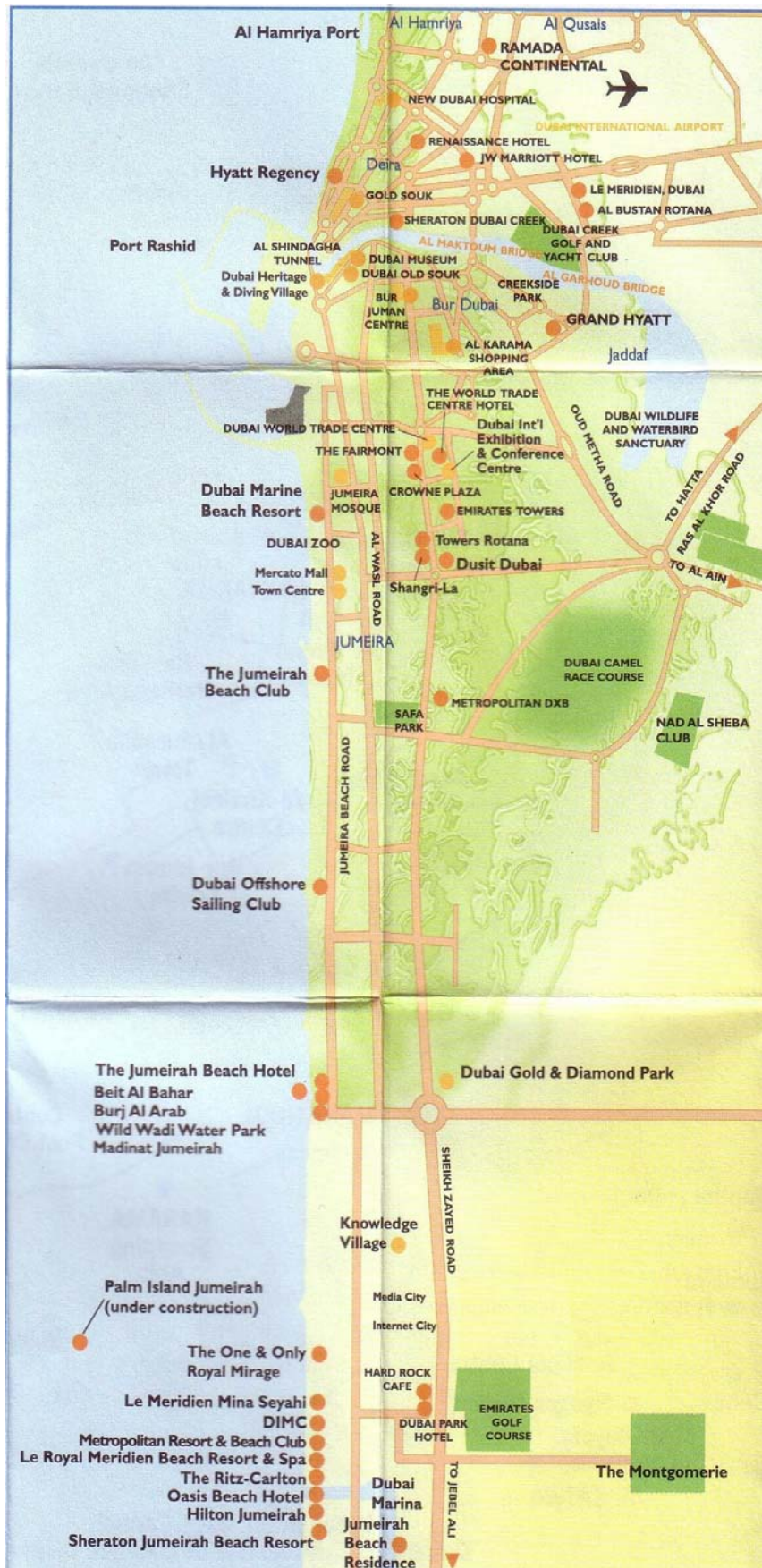


Abb. 6



Abb. 7



Abb. 8



Abb. 9



Abb. 10



Abb. 11



Abb. 12



Abb. 13



Abb. 14

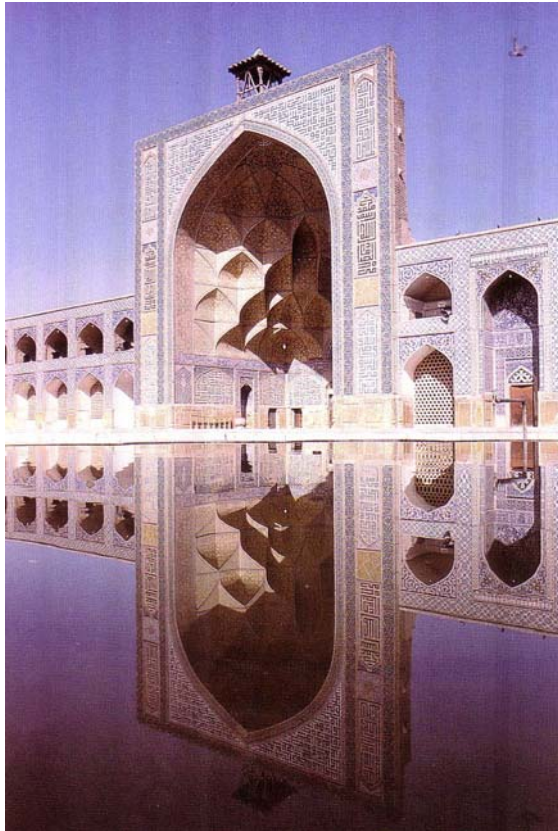


Abb. 15

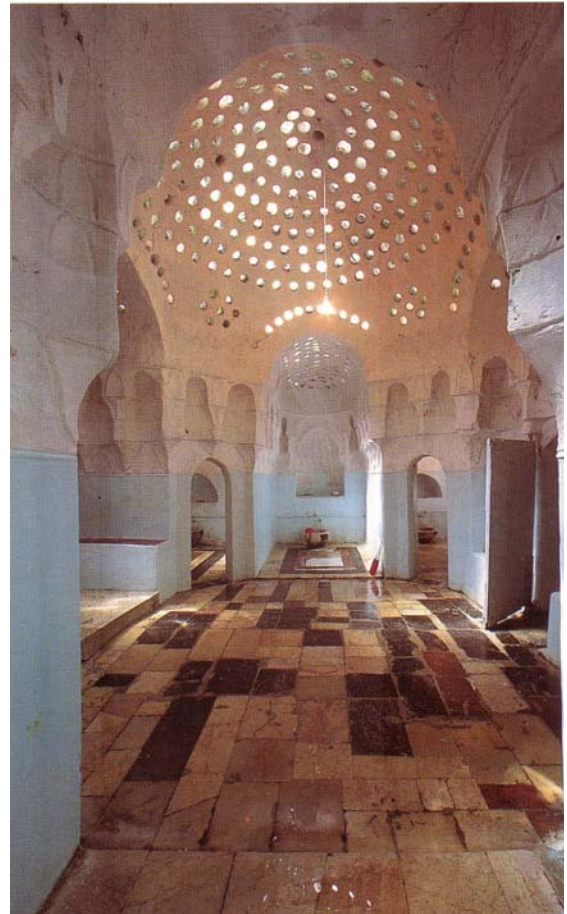


Abb. 16



Abb. 17



Abb. 18



Abb. 19

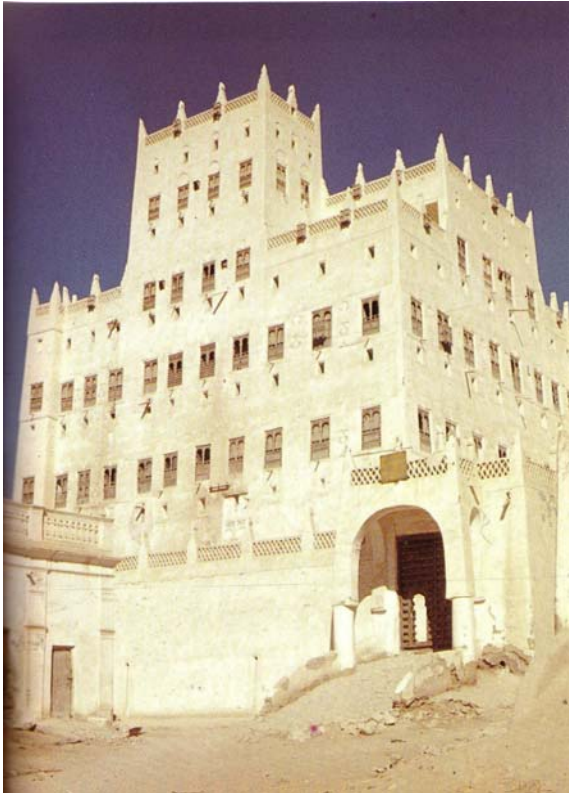


Abb. 20

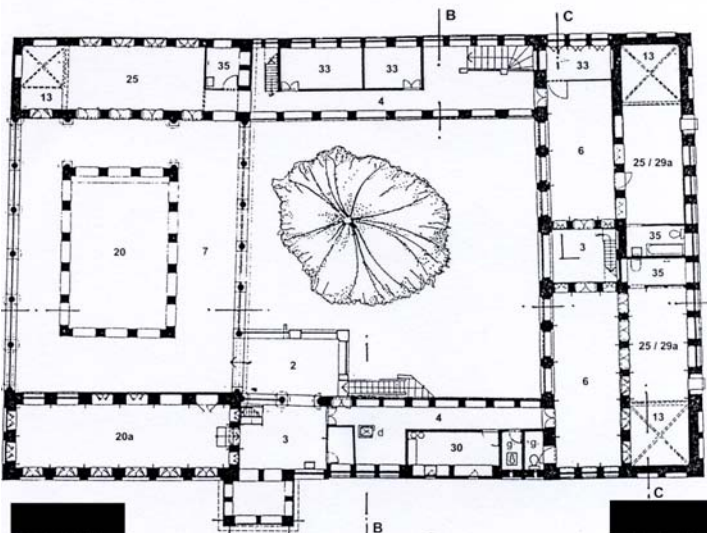


Abb. 21

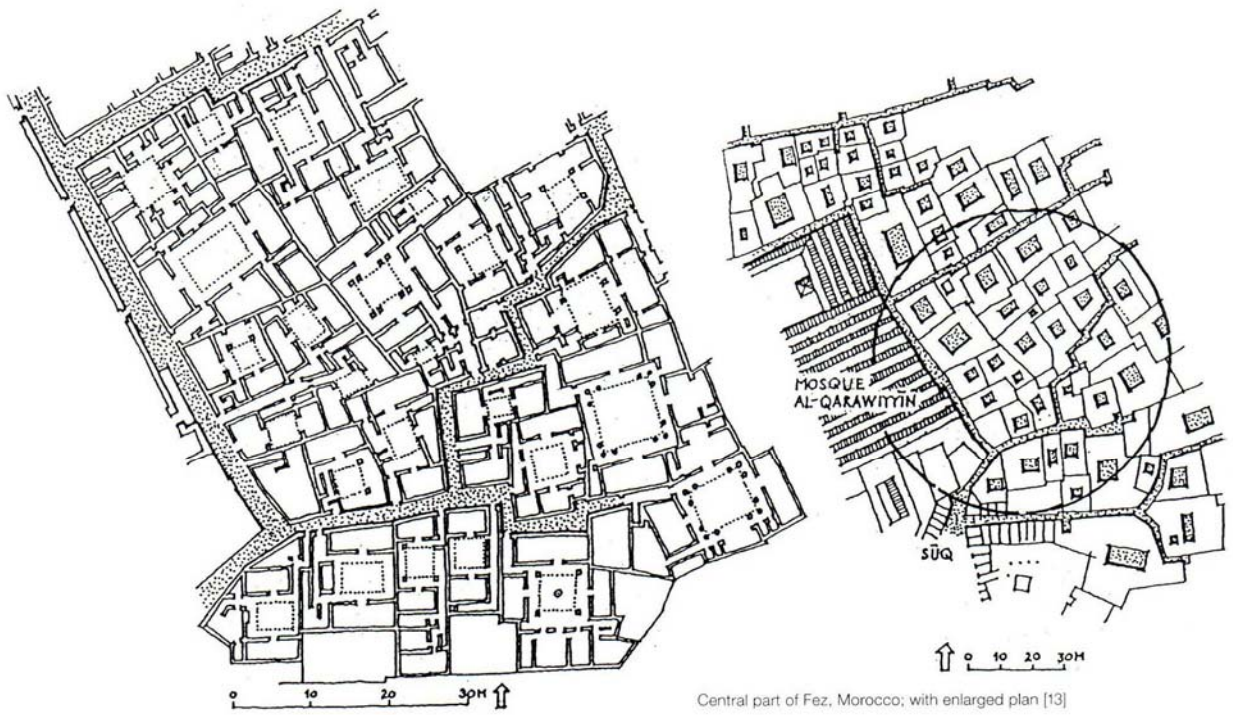


Abb. 22

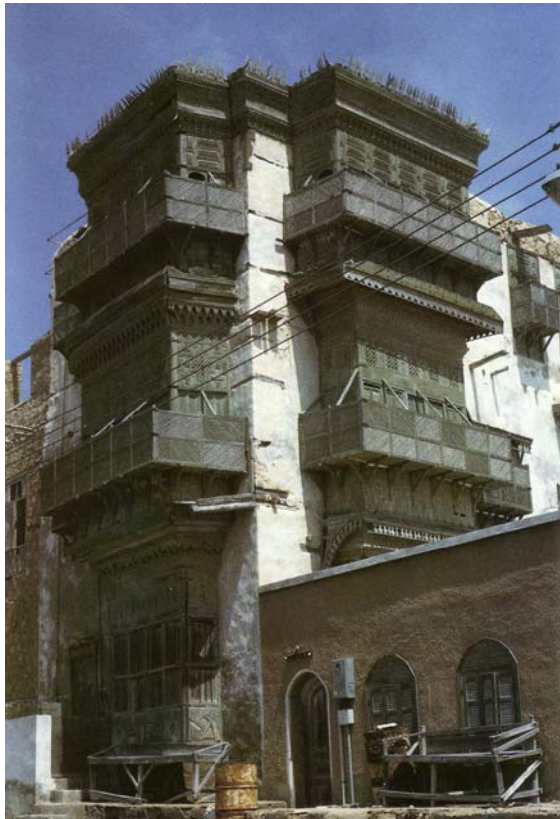


Abb. 23



Abb. 24



Abb. 25



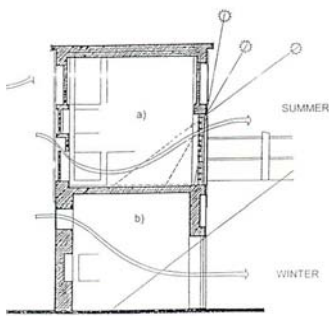
Abb. 26



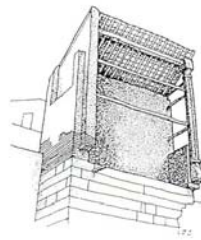
Abb. 27



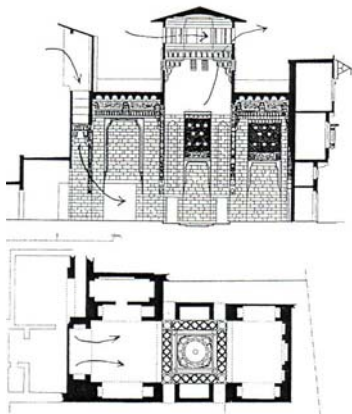
Abb. 28



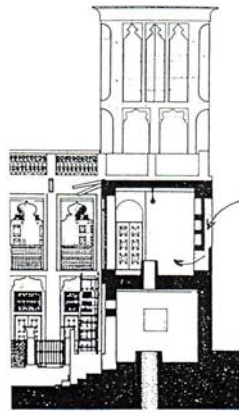
Thermal details of Sheikh Issa's house in Bahrain [10].
 a) low level cross-ventilation in summer room with low thermal capacity enclosure (bath and plaster wall and screen). b) high level ventilation in winter room with heavy walls and large south opening.



Wind-scoop in Cairo [13]



Wind scoop and qat'a, house Kathuda, Cairo [73]



Wind-scoop in Dubai (JAE, 11) [15]

Abb. 29



Abb. 30



Abb. 31



Abb. 32

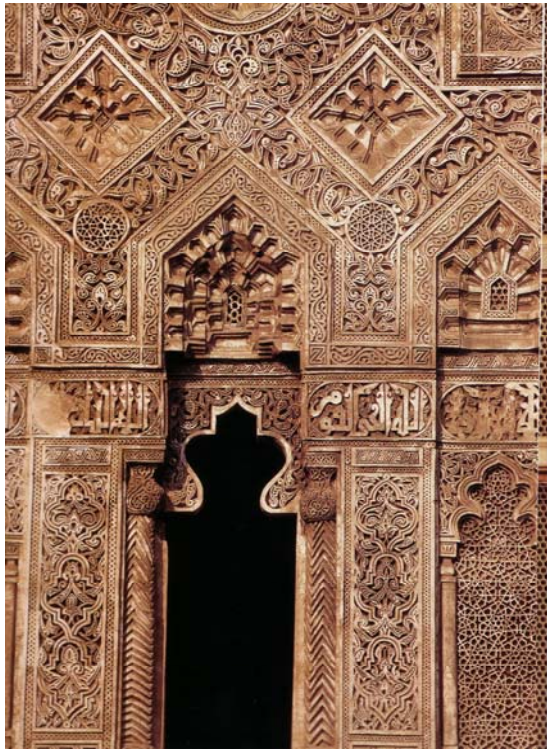


Abb. 33

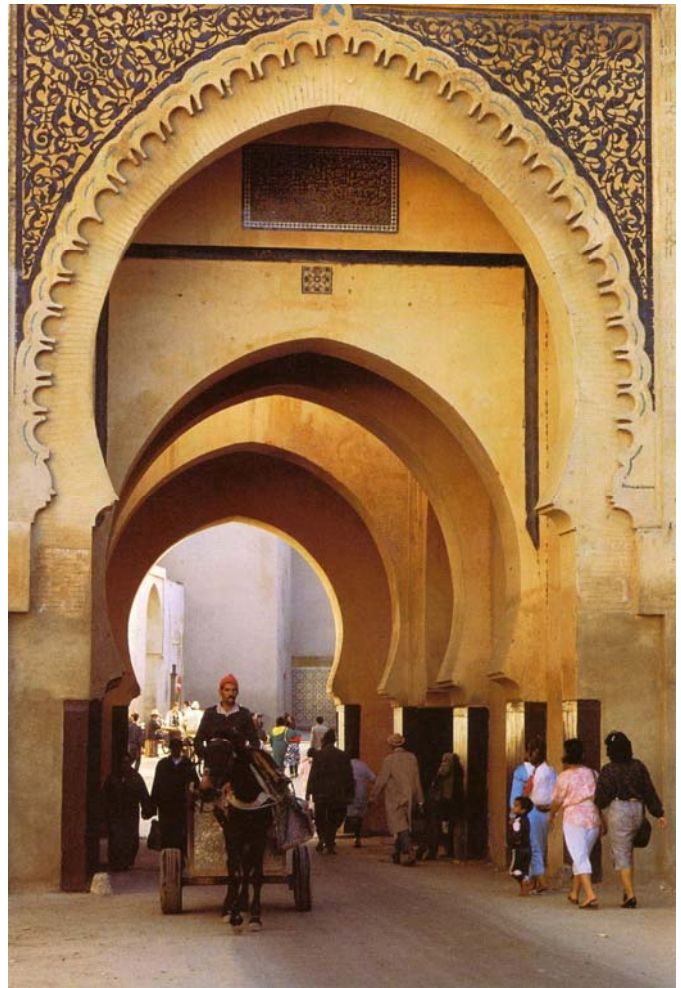


Abb. 34

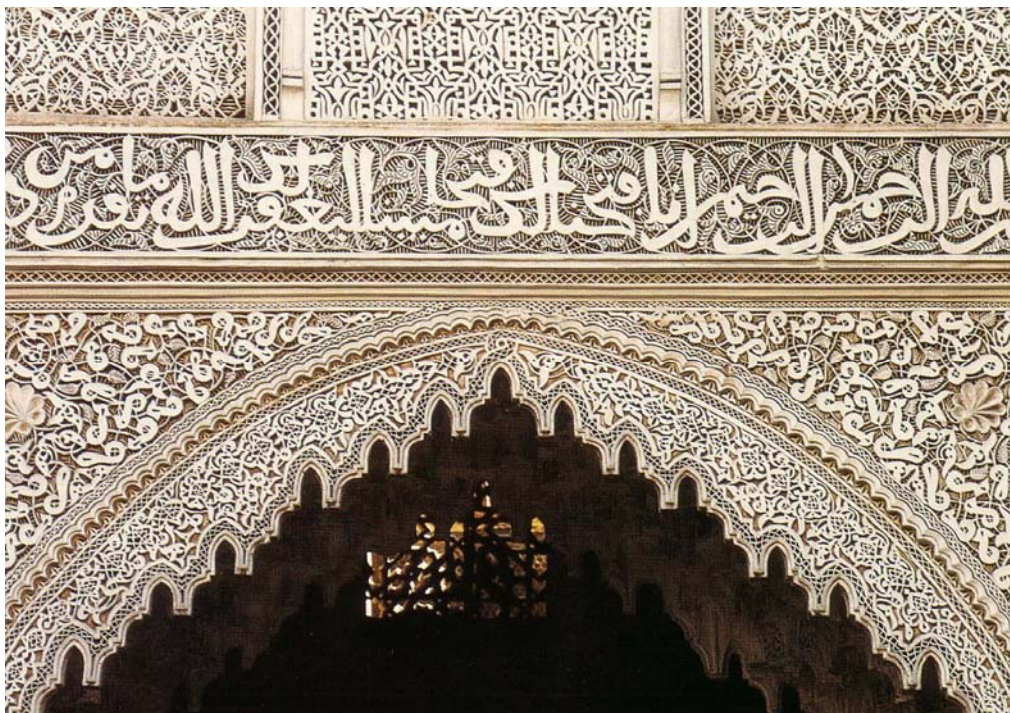


Abb. 35



Abb. 36

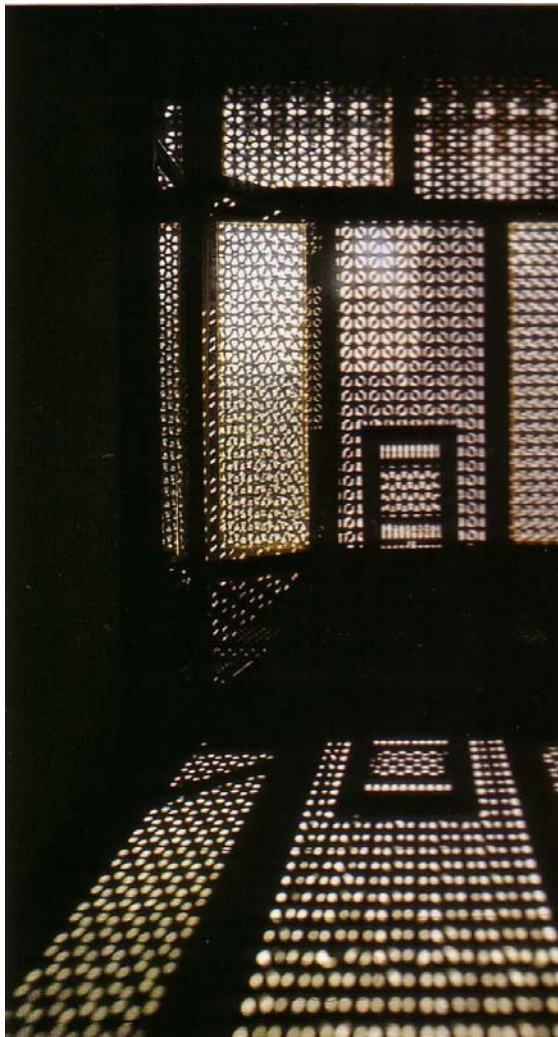


Abb. 37

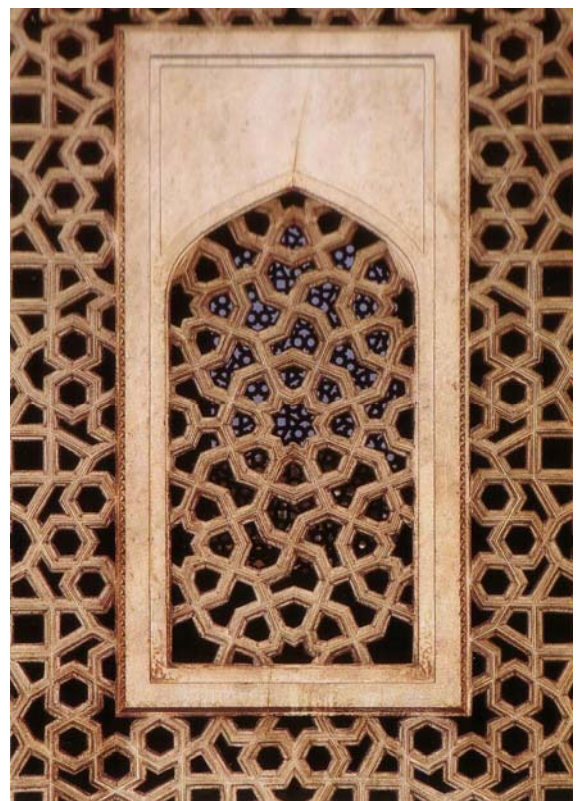


Abb. 38



Abb. 39

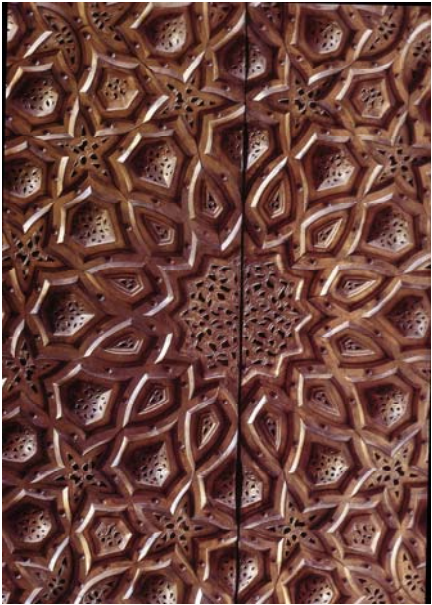


Abb. 40



Abb. 41



Abb. 42

Spätantikes Gesims,
5. Jahrhundert.



Amr-Moschee in Alt-Kairo,
um 800.



Moschee Ibn Tulun in Kairo,
Ende 9. Jahrhundert.



Moschee Sidi Oqba
in Kairuan.



Holzschnitzerei, Ägypten,
13. Jahrhundert.

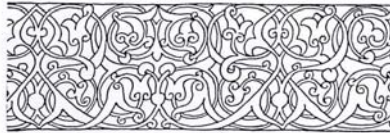


Abb. 43

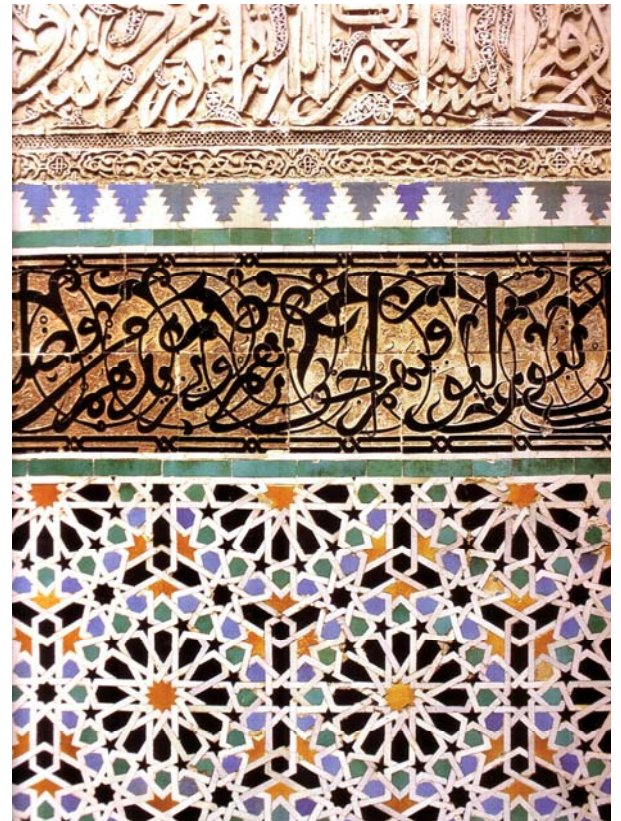


Abb. 44



Abb. 45

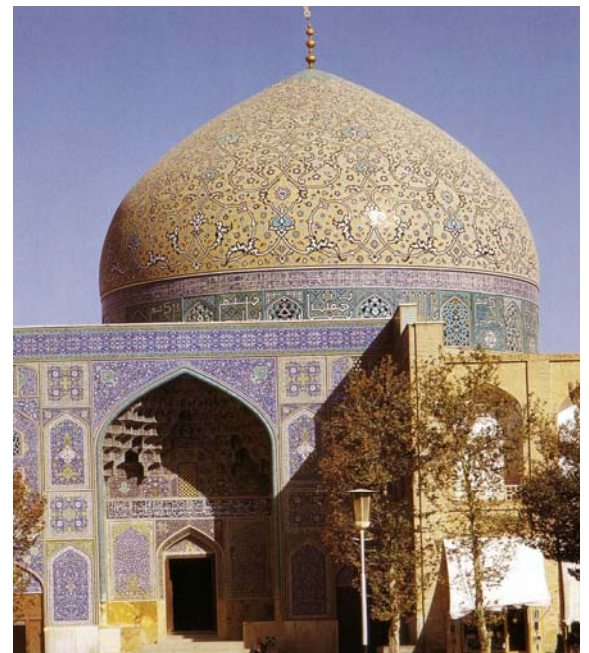


Abb. 46



Abb. 47



Abb. 48



Abb. 49



Abb. 50



Abb. 51

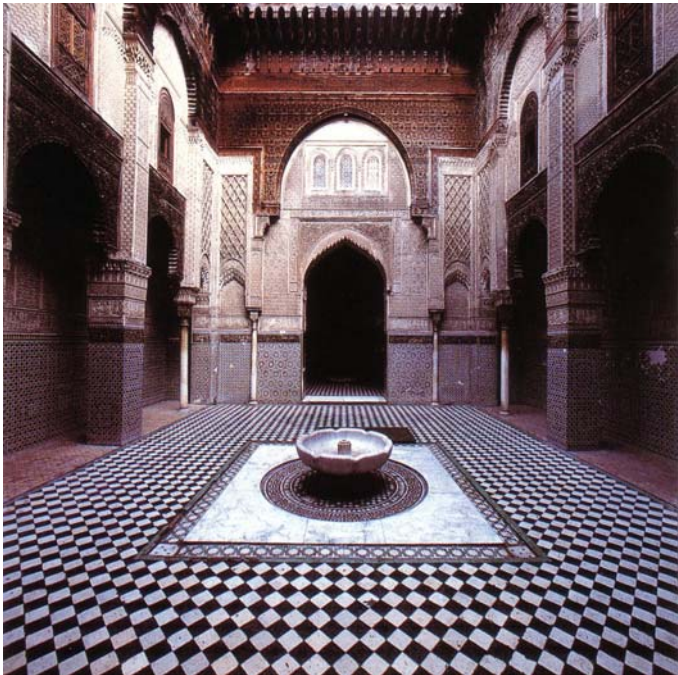


Abb. 52

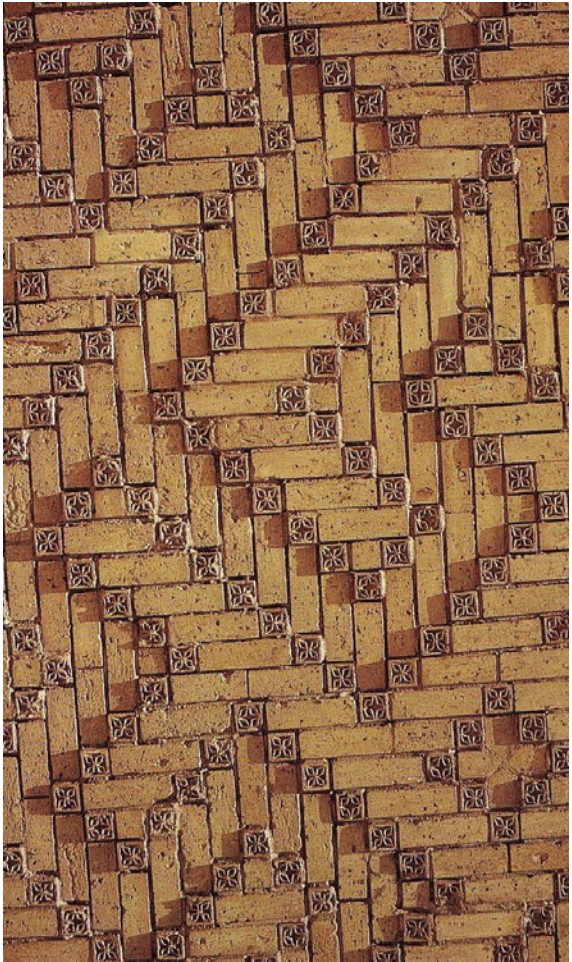


Abb. 53

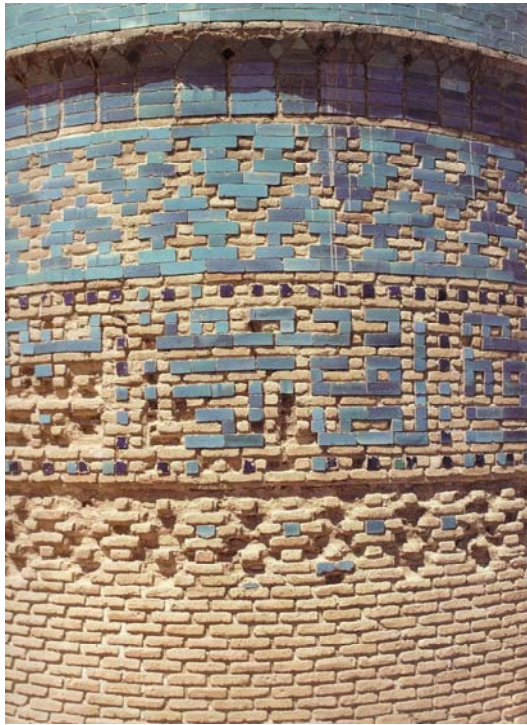


Abb. 54



Abb. 55

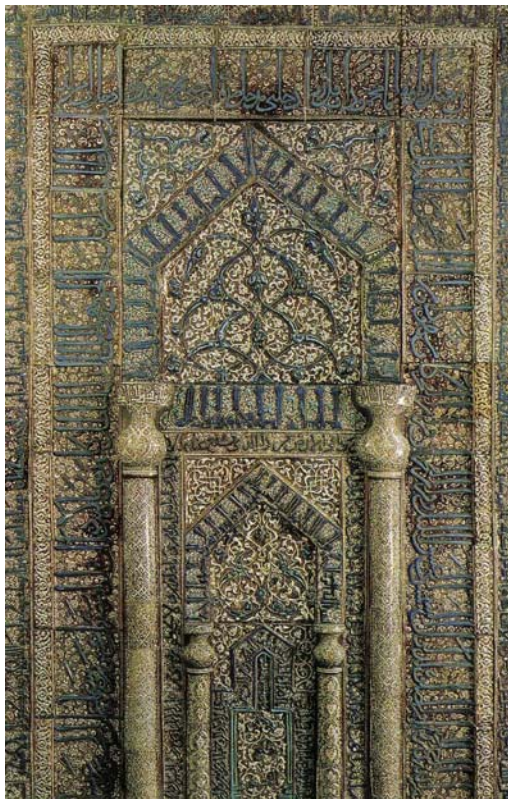


Abb. 56

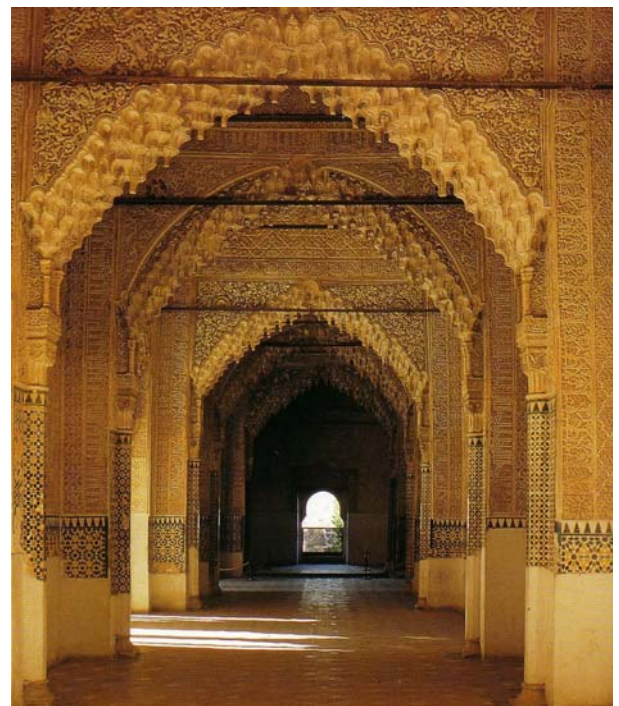


Abb. 57

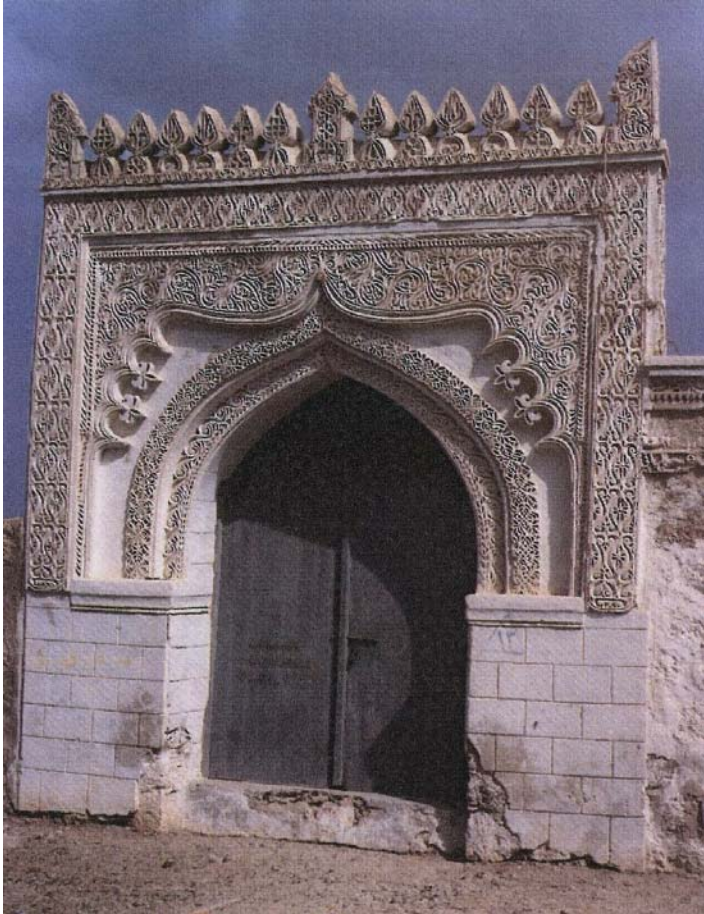


Abb. 58



Abb. 59

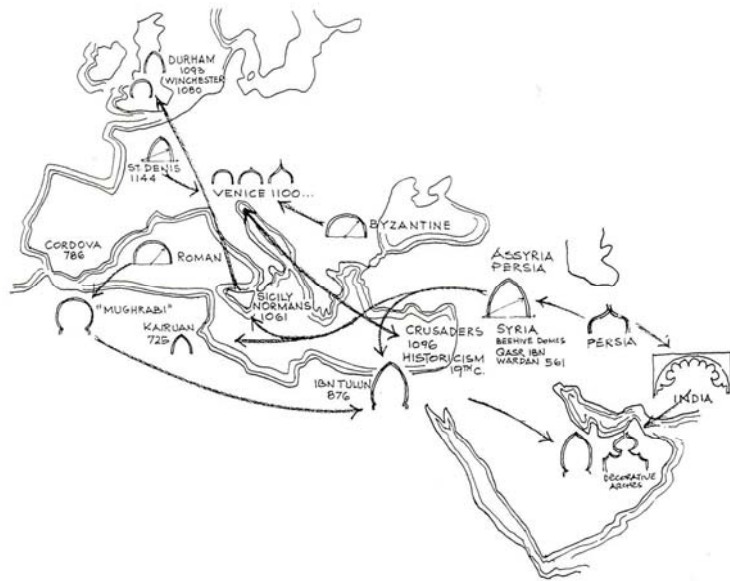


Abb. 60

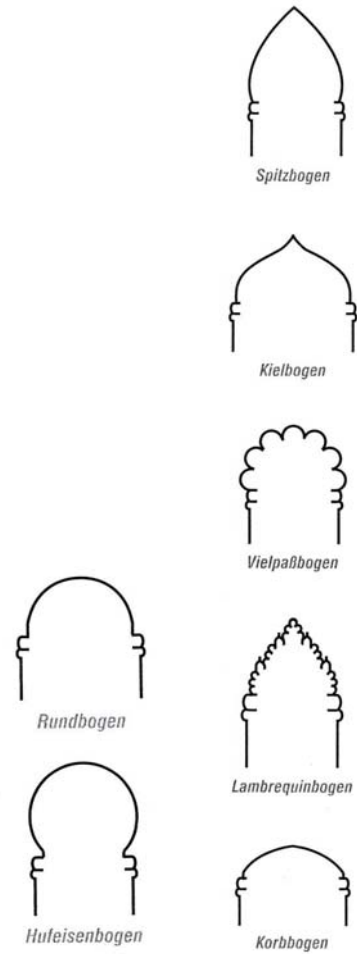


Abb. 61



Abb. 62

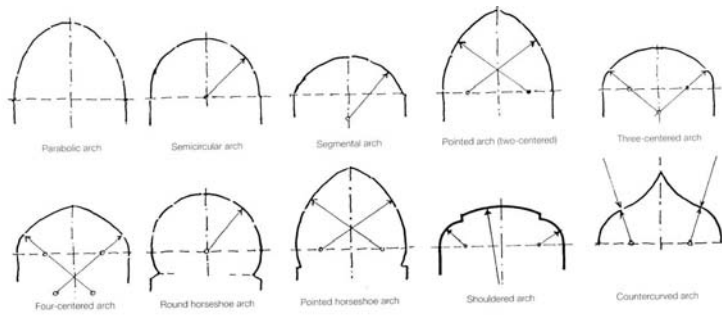
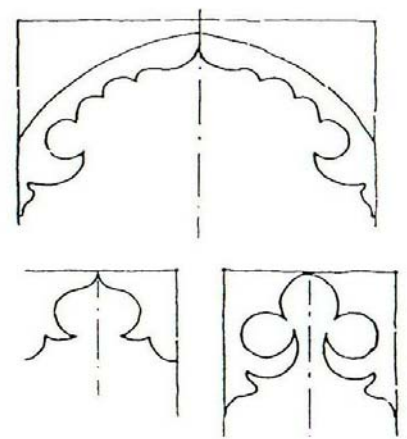


Abb. 63



Decorative arches
Abb. 64



Abb. 65

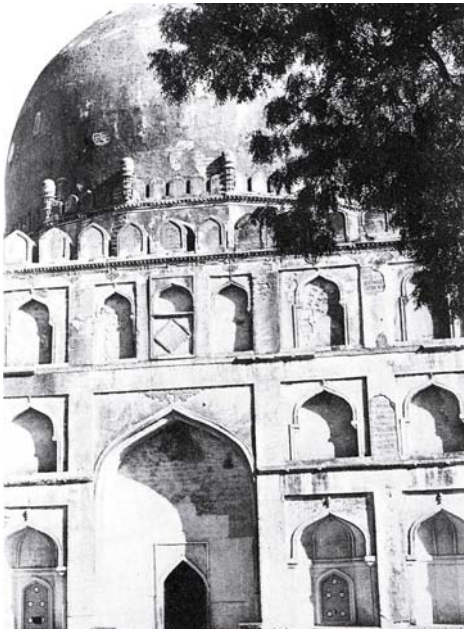


Abb. 66



Abb. 67

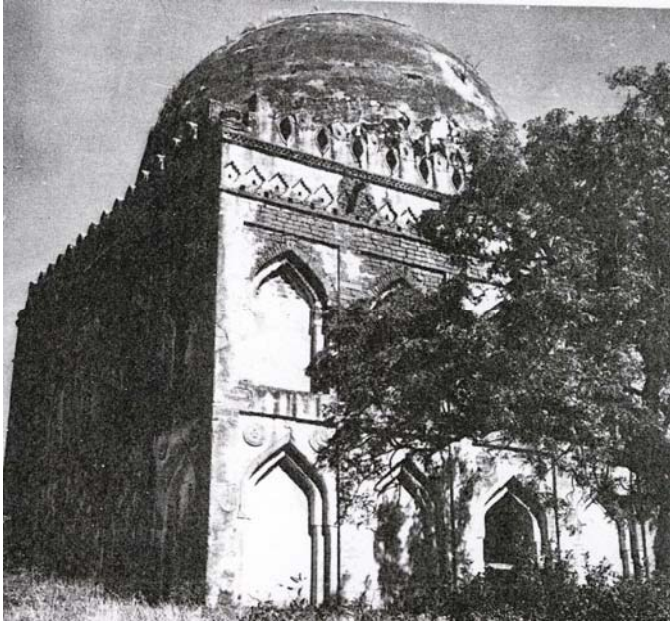


Abb. 68

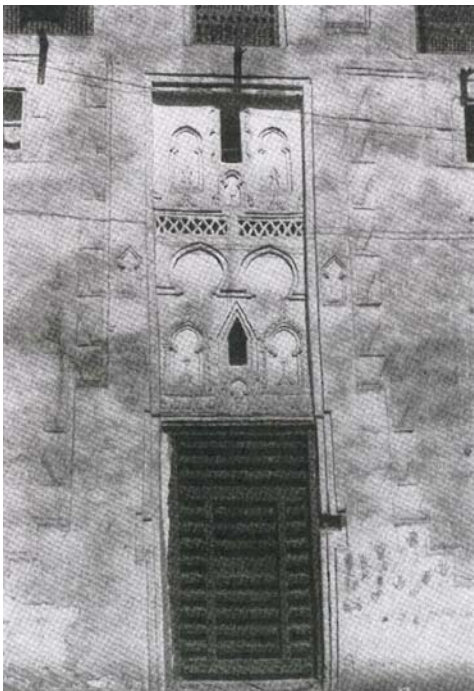


Abb. 69



Abb. 70



Abb. 71

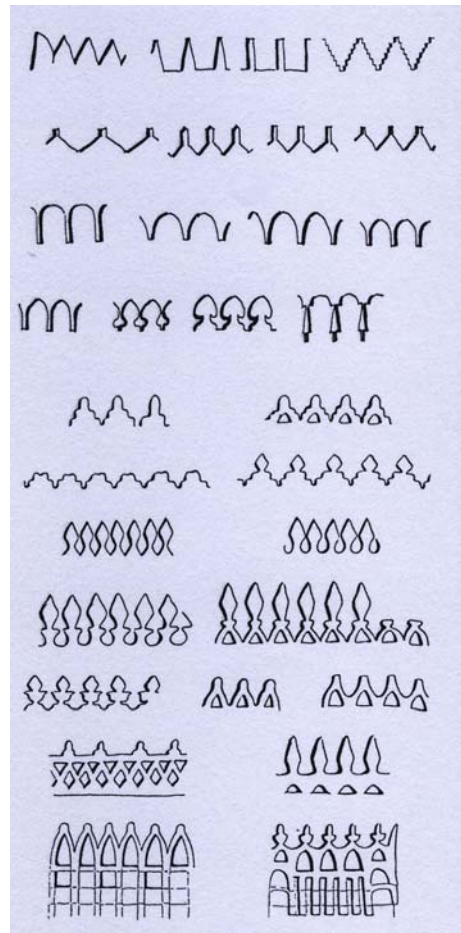


Abb. 72

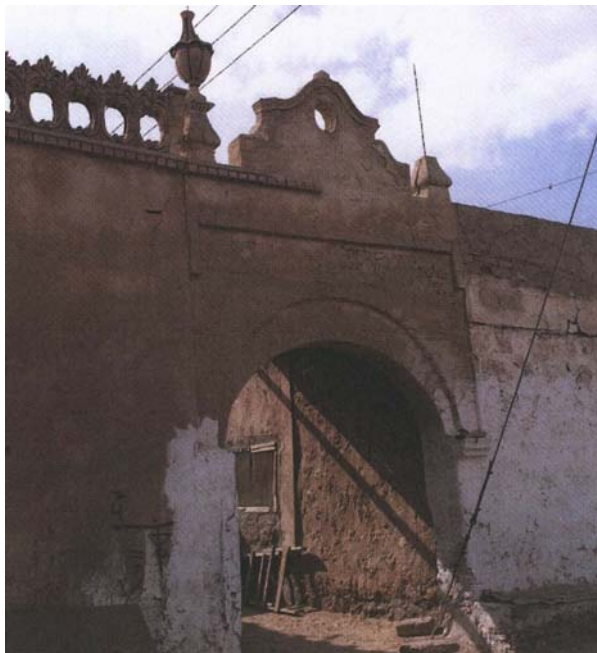


Abb. 73

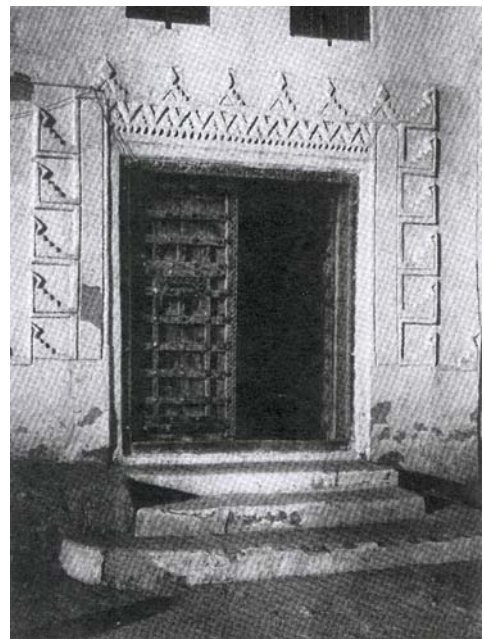


Abb. 74

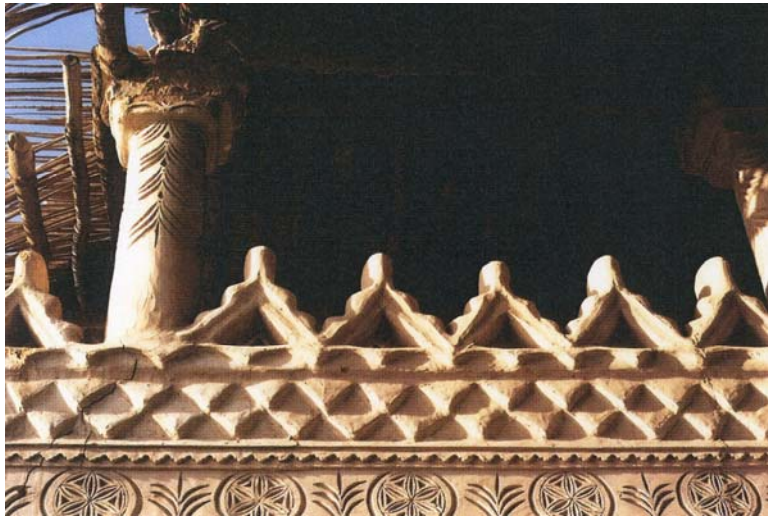


Abb. 75



Abb. 76



Abb. 77



Abb. 78



Abb. 79

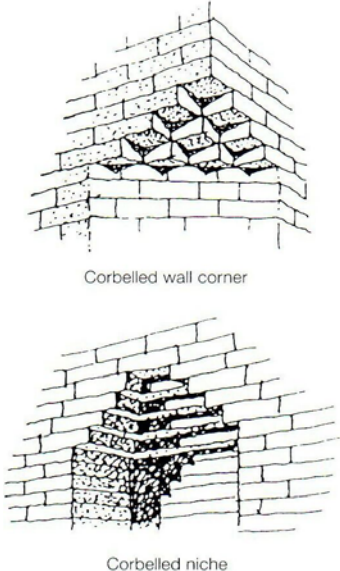


Abb. 80

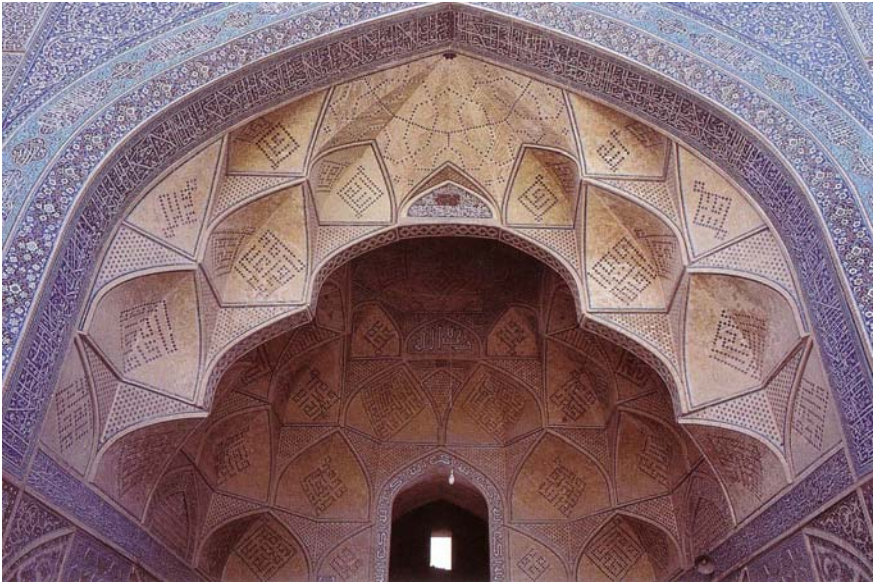


Abb. 81



Abb. 82

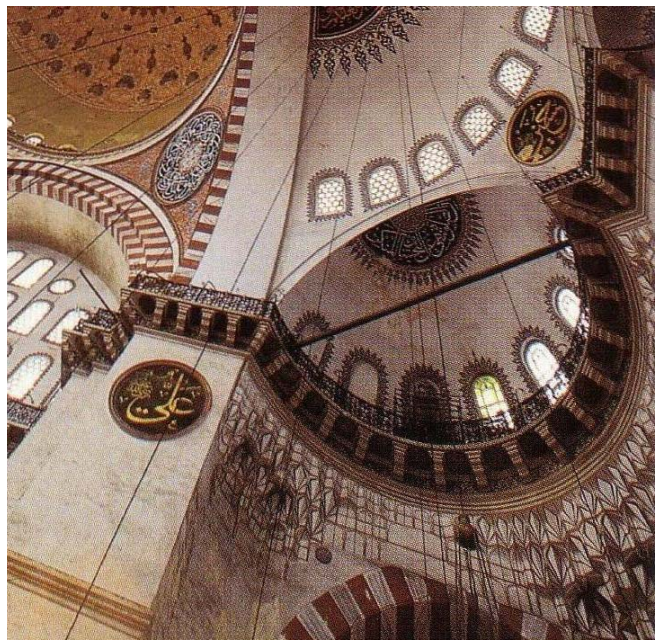


Abb. 83

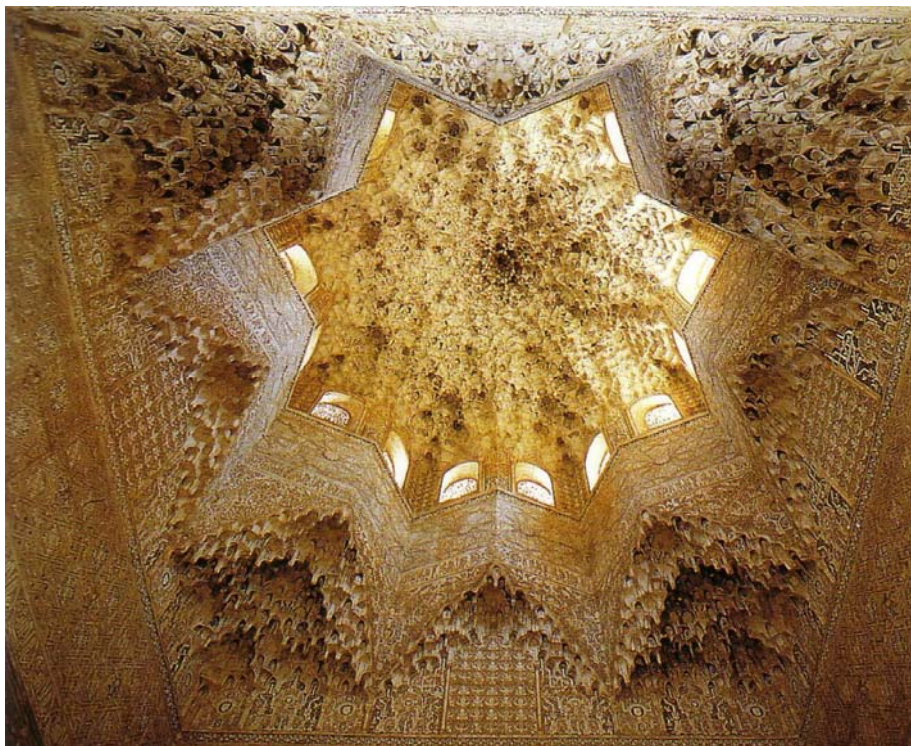


Abb. 84



Abb. 85



Abb. 86



Abb. 87

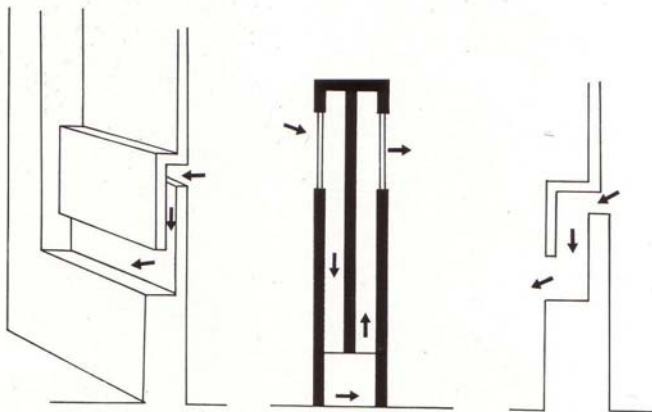


Abb. 88



Abb. 89

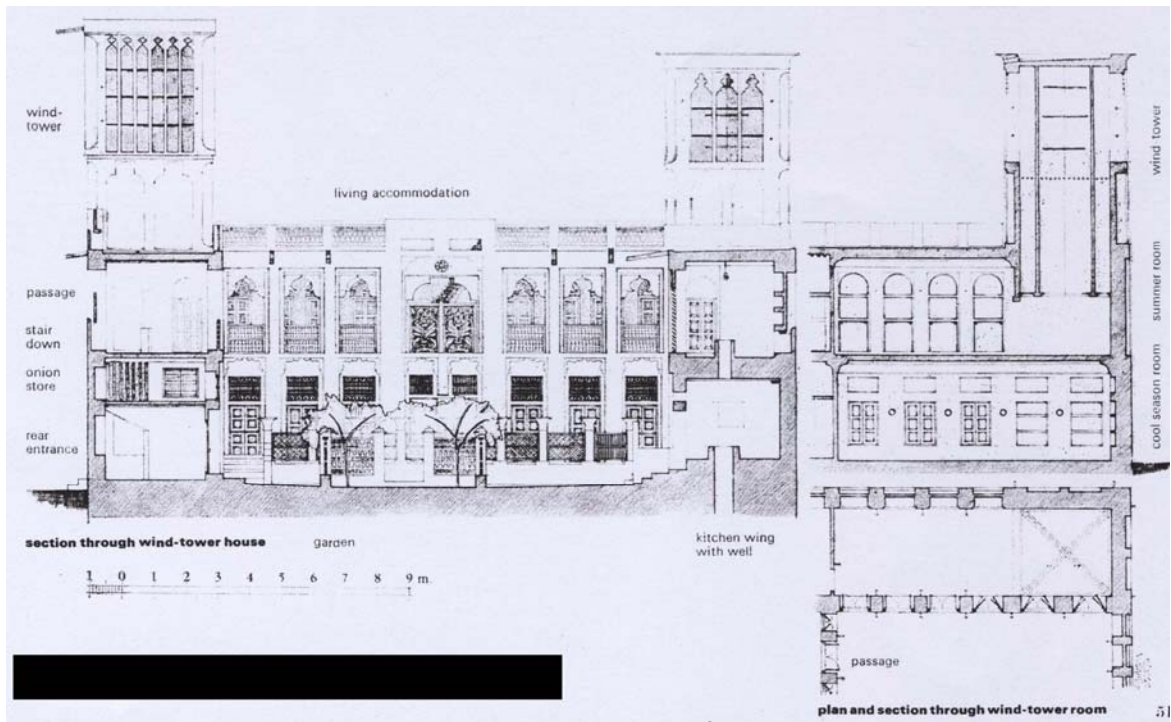


Abb. 90



Abb. 91



Abb. 92



Abb. 93



Abb. 94



Abb. 95



Abb. 96



Abb. 97



Abb. 98



Abb. 99



Abb. 100

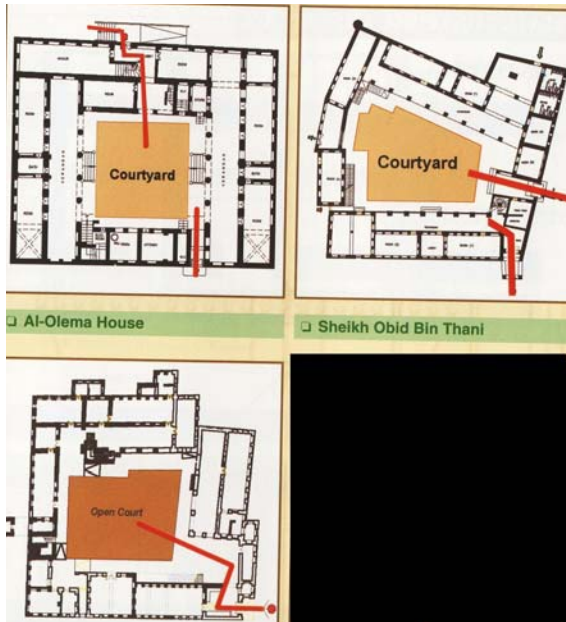


Abb. 101



Abb. 102

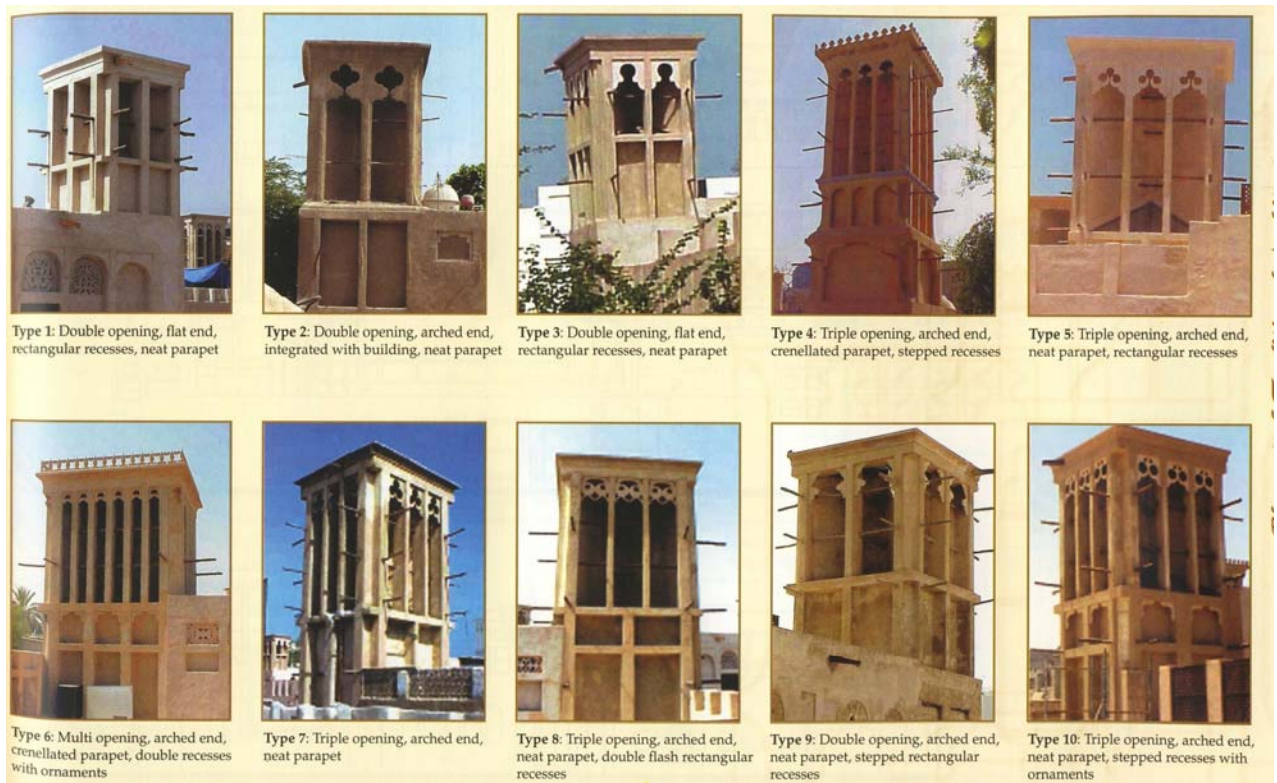
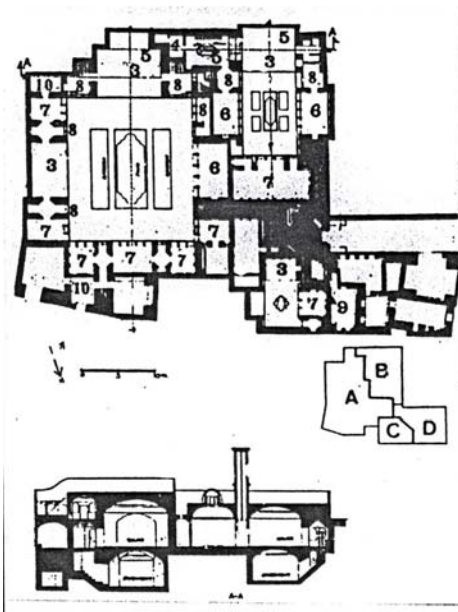


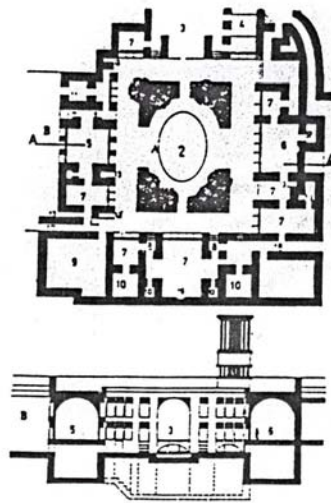
Abb. 103



1. Eingang
2. Hof mit Holz in der Mitte
3. Iywan u. Talār
4. Windfangsraum
5. Sommerraum
6. Orsi
7. Wohnraum
8. Iywançe
9. Küche
10. Lagerraum

Abb. 104

Ändarūnī Bereich von ein bürgerliches Haus (Yazd)



- A. Ändarūnī (privater Bereich)
- B. Bīrūnī (öffentlicher Bereich)
- C. Khāl wāt bērich
- D. Stallungen und Dienstleistungsbereich

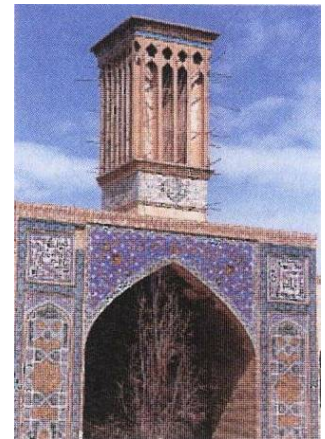


Abb. 105



Abb. 106



Abb. 107



Abb. 108

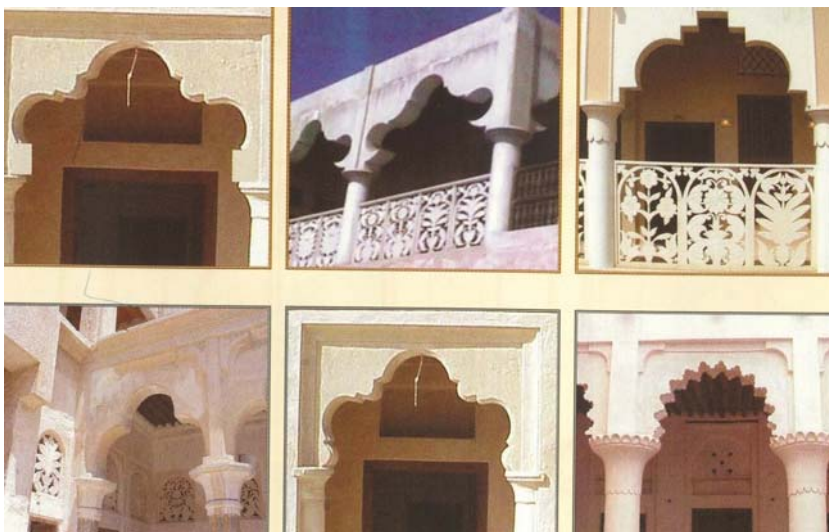


Abb. 109



Abb. 110



Abb. 111



Abb. 112



Abb. 113

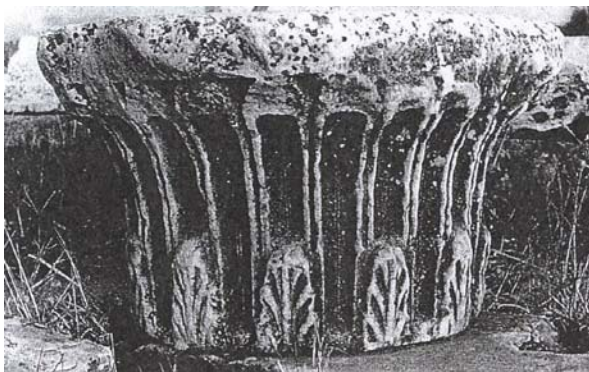


Abb. 114



Abb. 115



Abb. 116



Abb. 117



Abb. 118

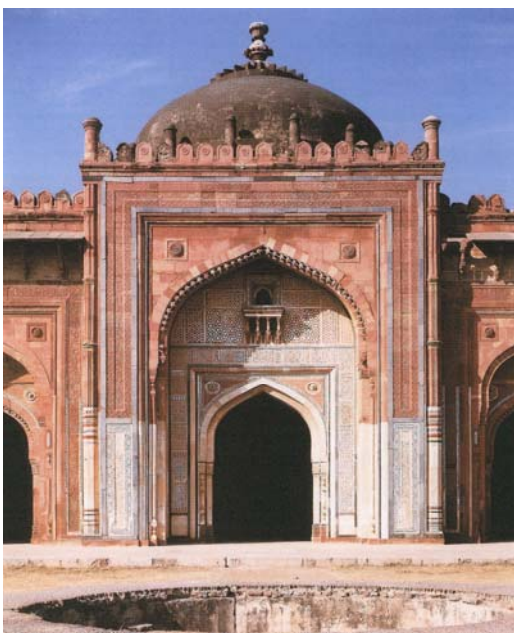


Abb. 119

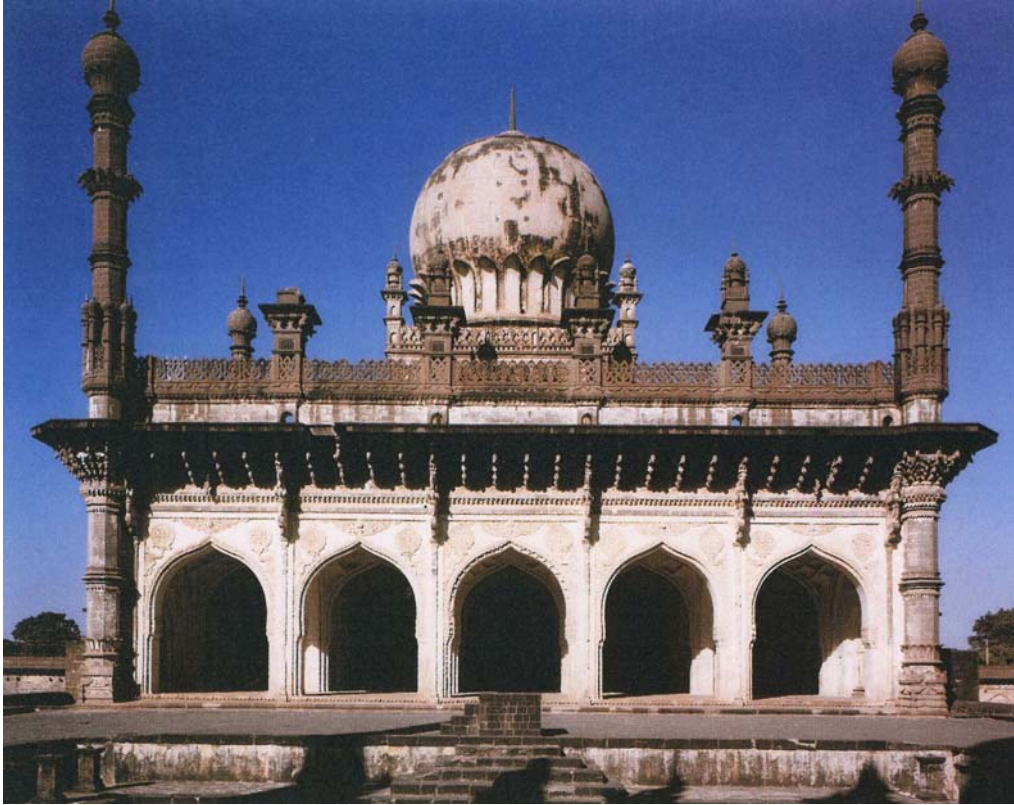


Abb. 120

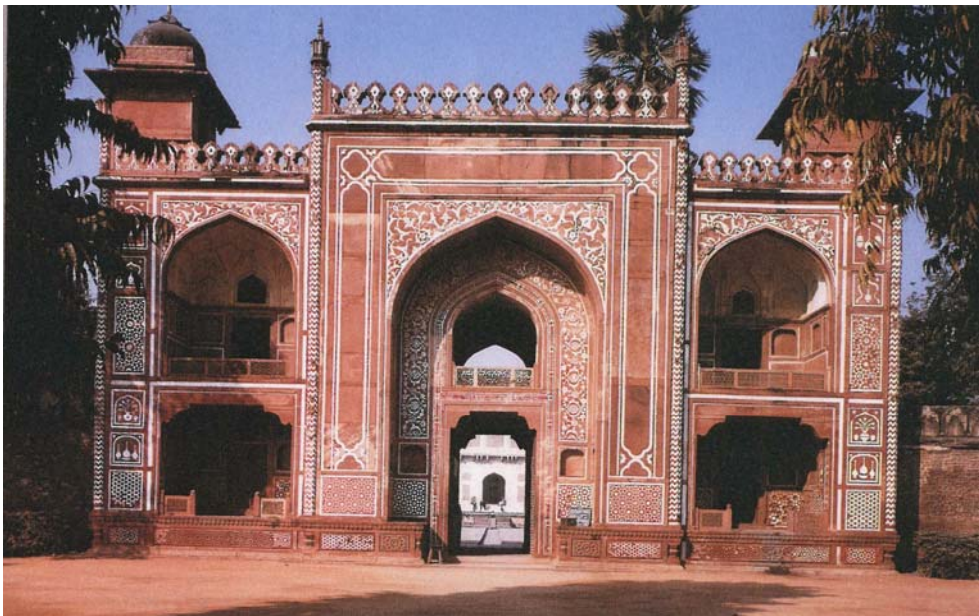


Abb. 121



Abb. 122

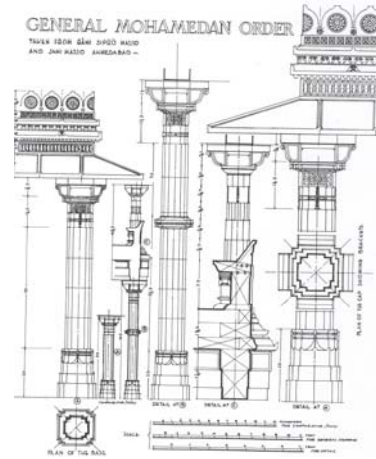


Abb. 123

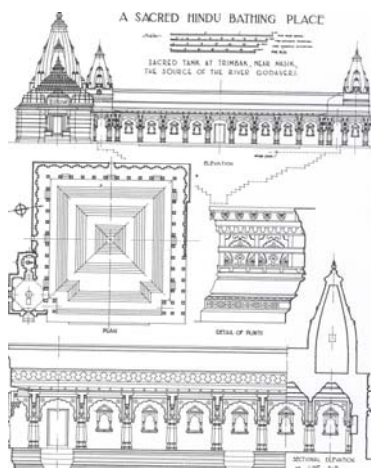


Abb. 124



Abb. 125



Abb. 126



Abb. 127



Abb. 128



Abb. 129



Abb. 130



Abb. 131



Abb. 132



Abb. 133



Abb. 134



Abb. 135



Abb. 136



Abb. 137



Abb. 138

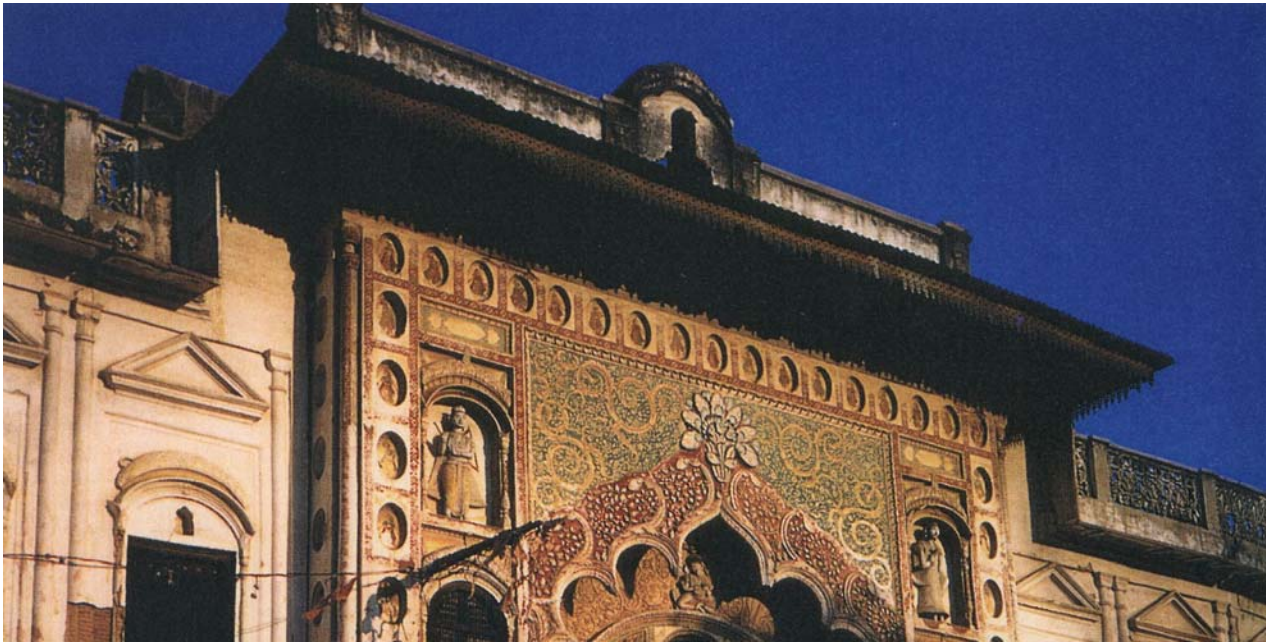


Abb. 139

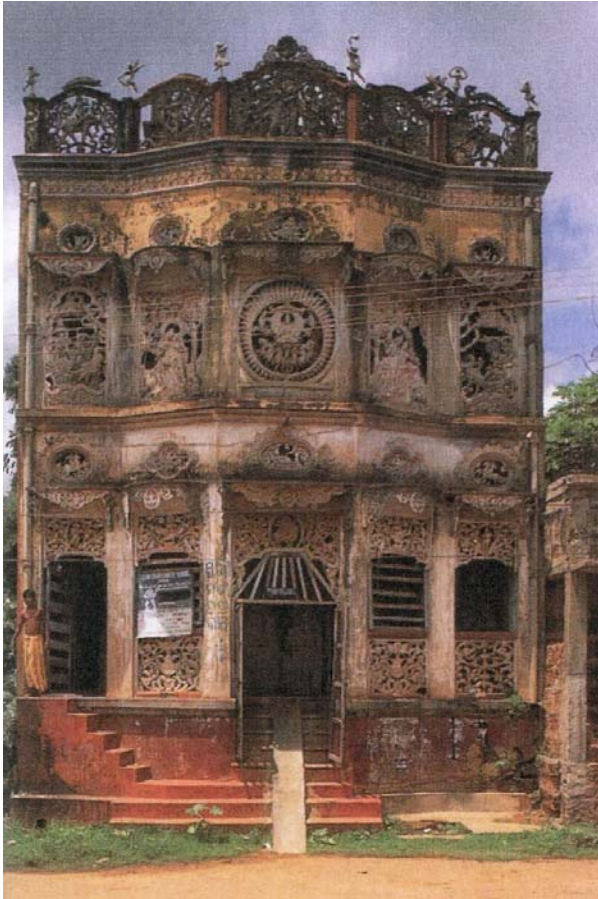


Abb. 140



Abb. 141



Abb. 142

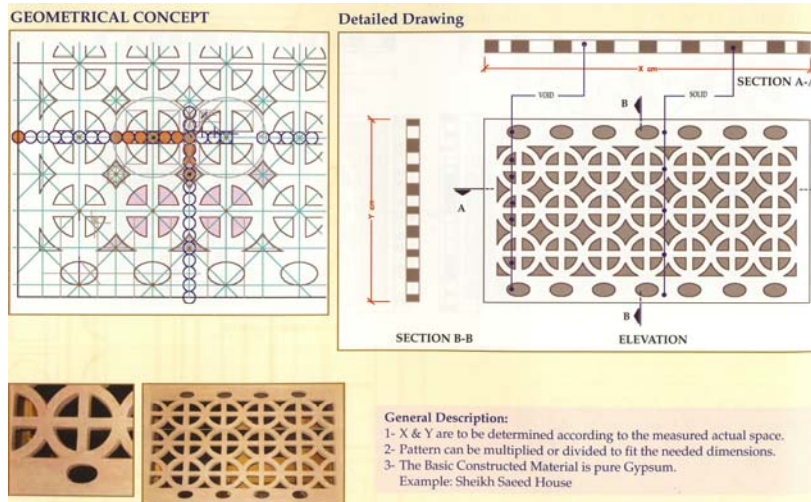


Abb. 143

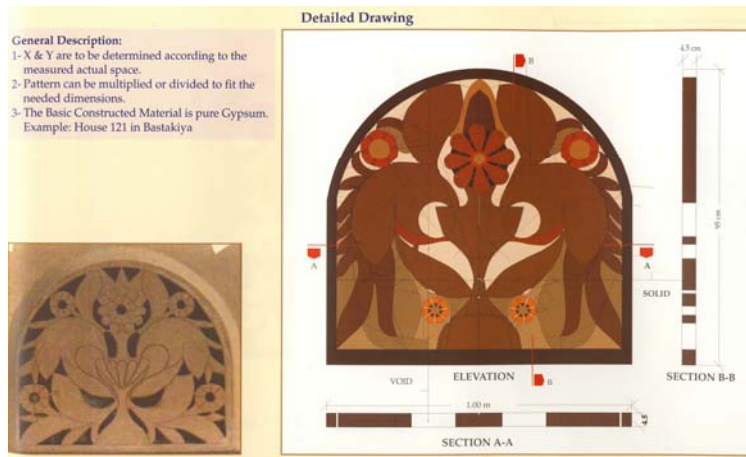


Abb. 144

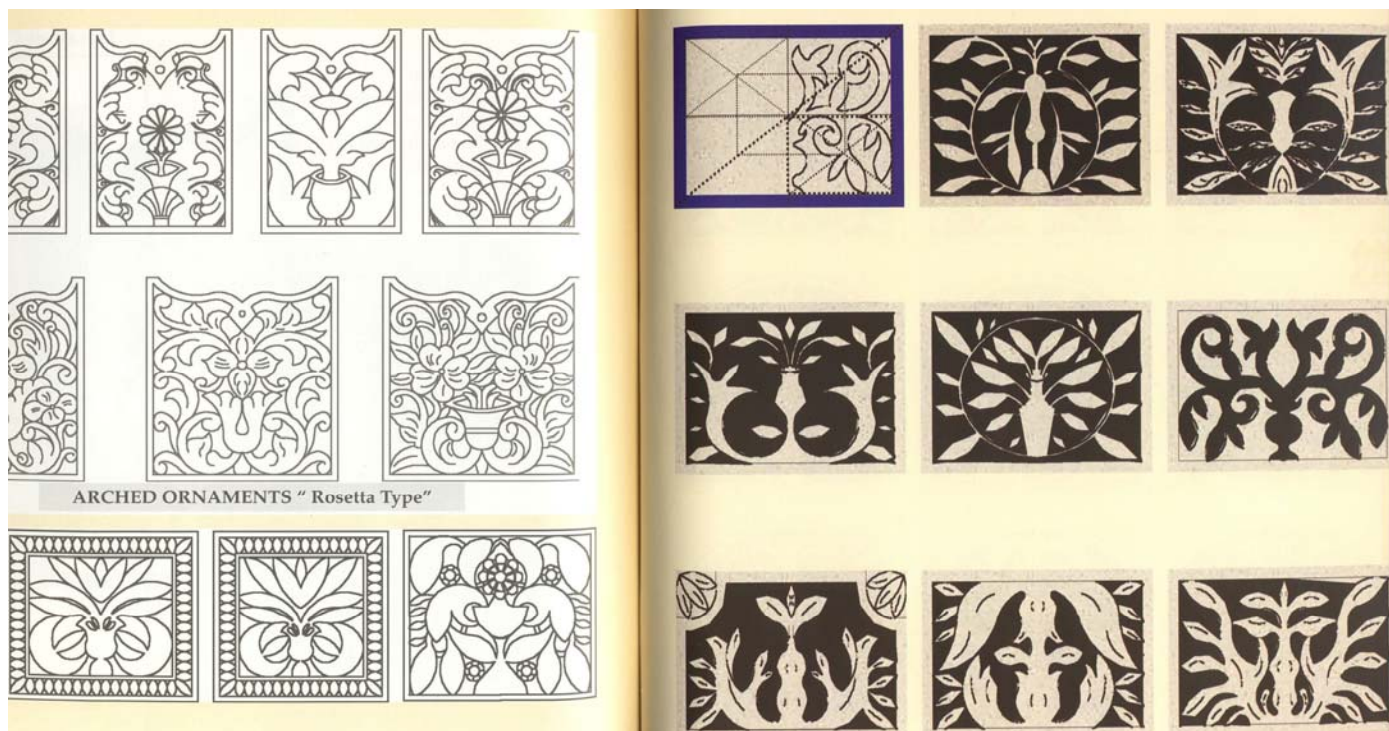


Abb. 145



Abb. 146

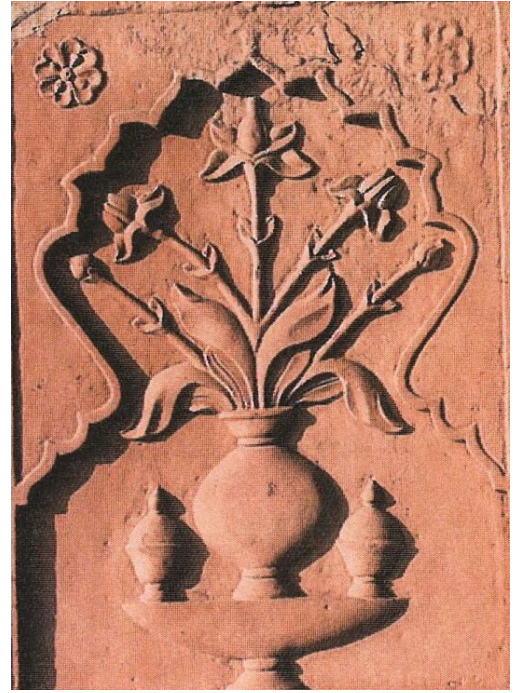


Abb. 147

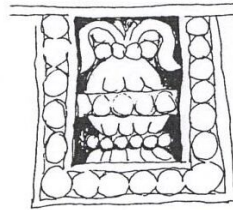


Abb. 148

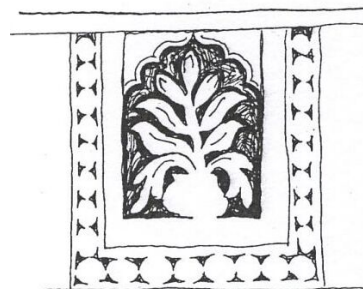
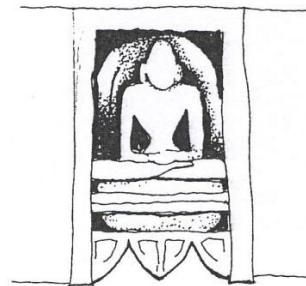


Abb. 149



Abb. 150



Abb. 151



Abb. 152

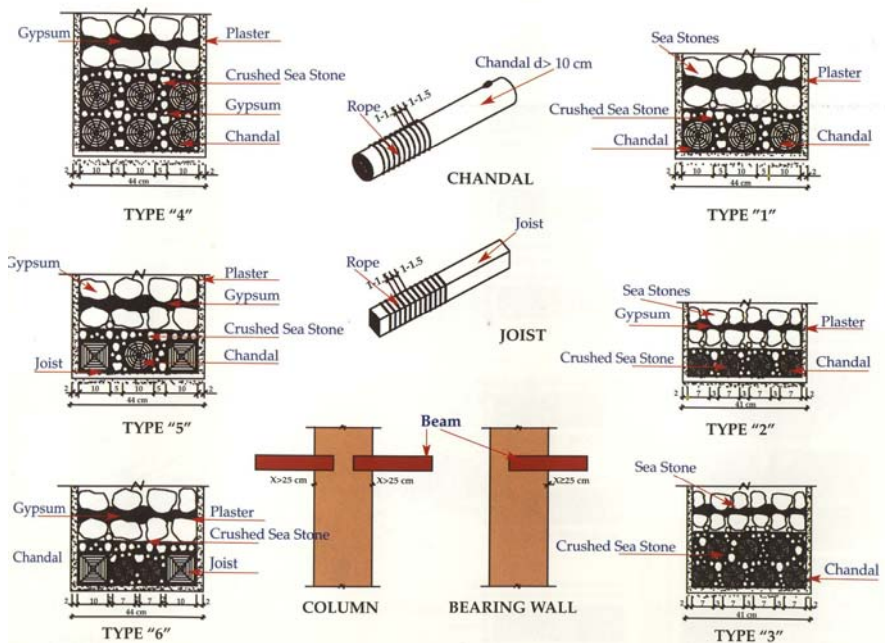


Abb. 153

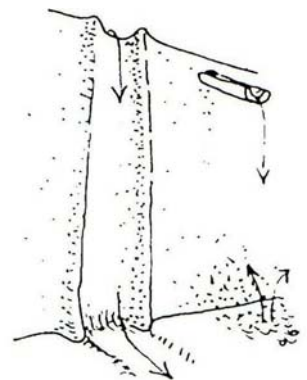


Abb. 154



Abb. 155



Abb. 156

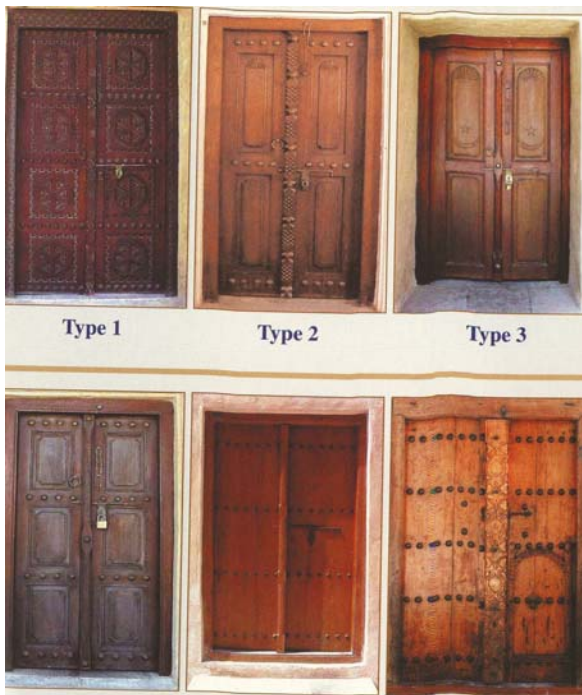


Abb. 157

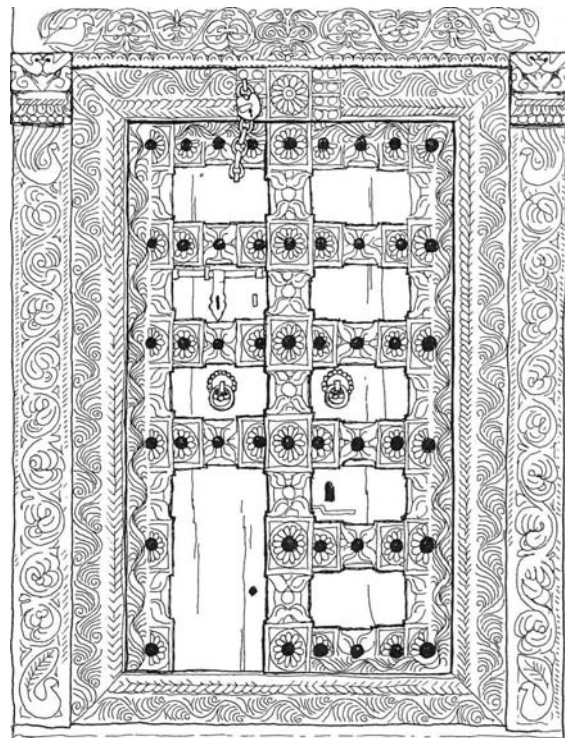


Abb. 158



Abb. 159



Abb. 160



Abb. 161



Abb. 162



Abb. 163



Abb. 164



Abb. 165



Abb. 166



Abb. 167



Abb. 168



Abb. 169

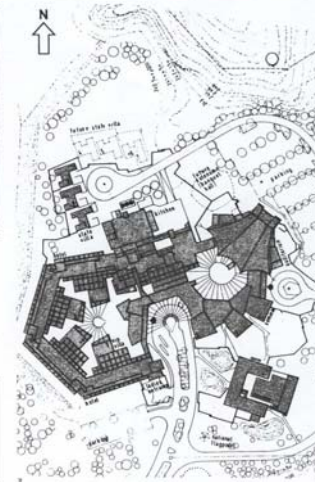
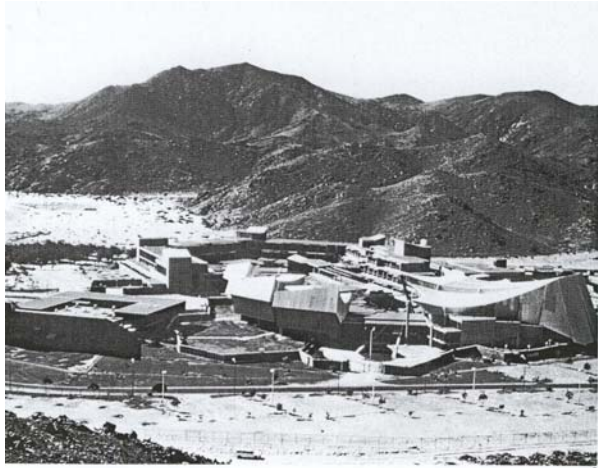


Abb. 170



Abb. 171

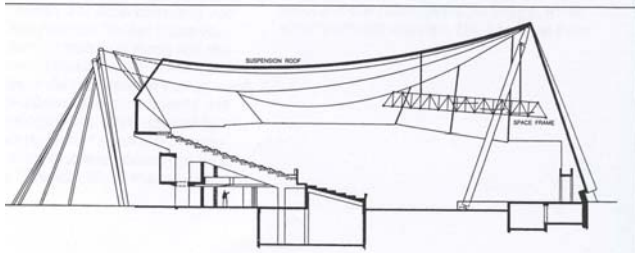
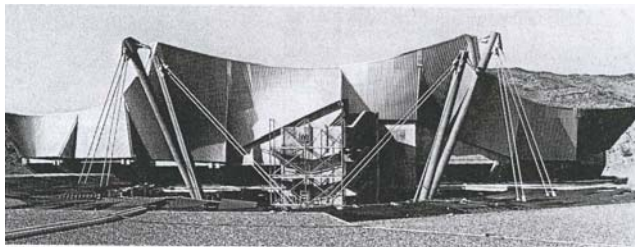


Abb. 172



1
Typical two-story villa
2
Partial layout plan of Phase I



Abb. 173



Abb. 174



Abb. 175



Abb. 176



Abb. 177



Abb. 178

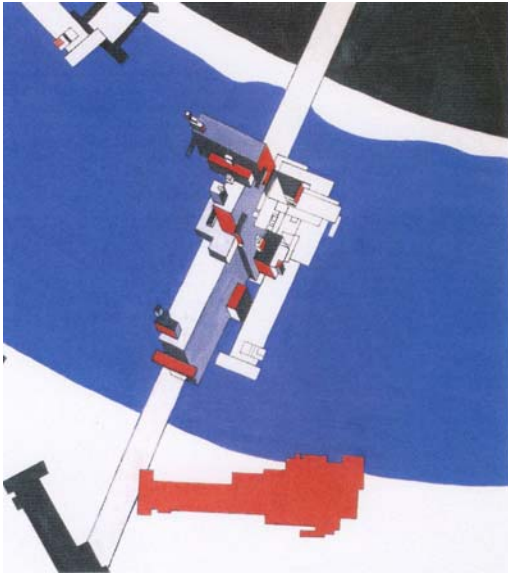


Abb. 179

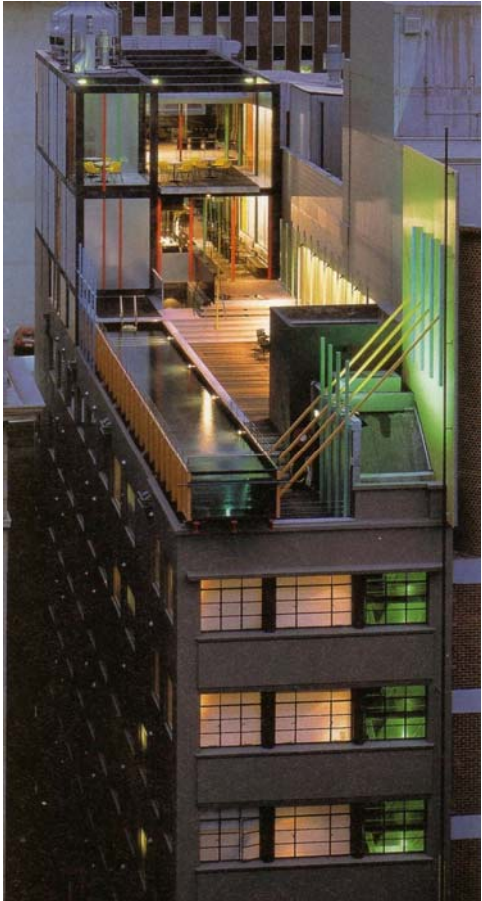


Abb. 180



Abb. 181



Abb. 182



Abb. 183



Abb. 184



Abb. 185



Abb. 186



Abb. 187



Abb. 188



Abb. 189



Abb. 190

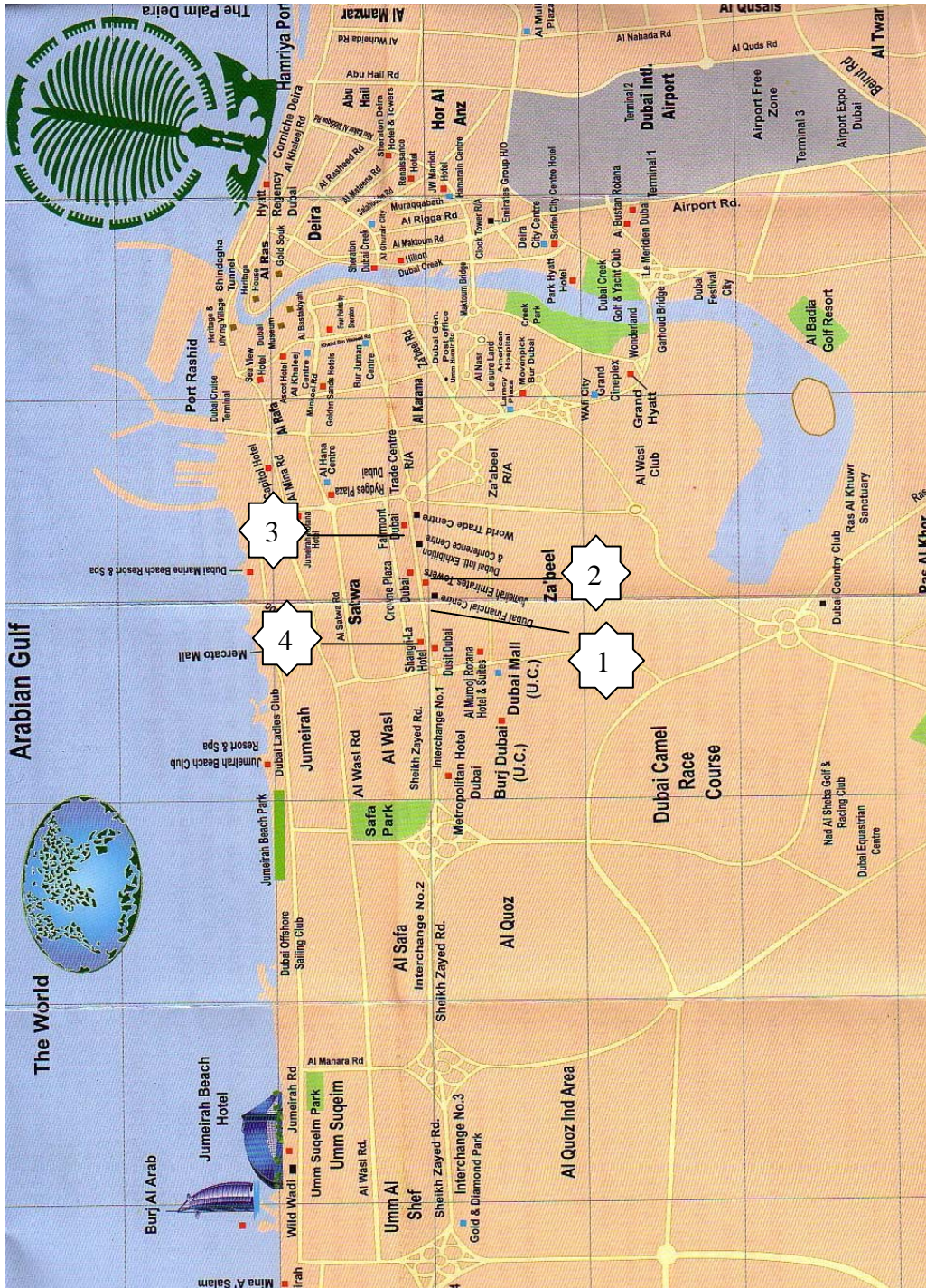


Abb. 191



Abb. 192



Abb. 193



Abb. 194



Abb. 195



Abb. 196

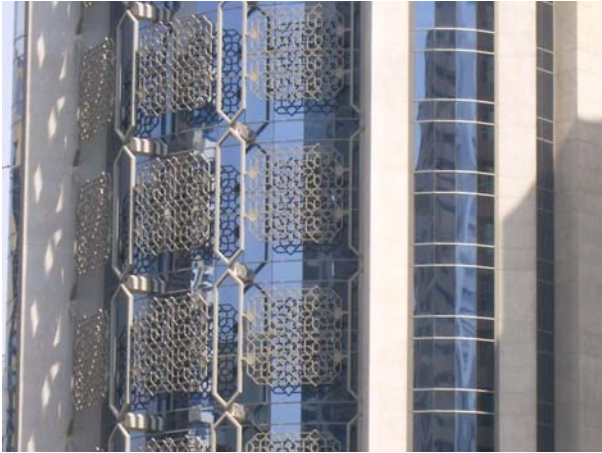


Abb. 197



Abb. 198



Abb. 199



Abb. 200



Abb. 201



Abb. 202



Abb. 203



Abb. 204



Abb. 205



Abb. 206



Abb. 207



Abb. 208



Abb. 209



Abb. 210



Abb. 211



Abb. 212



Abb. 213



Abb. 214



Abb. 215

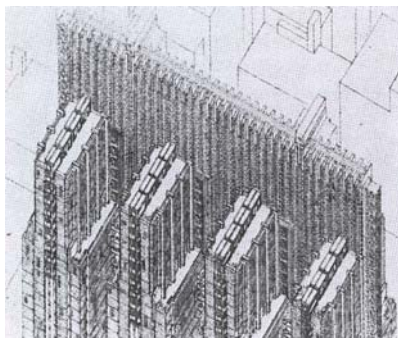


Abb. 216



Abb. 217

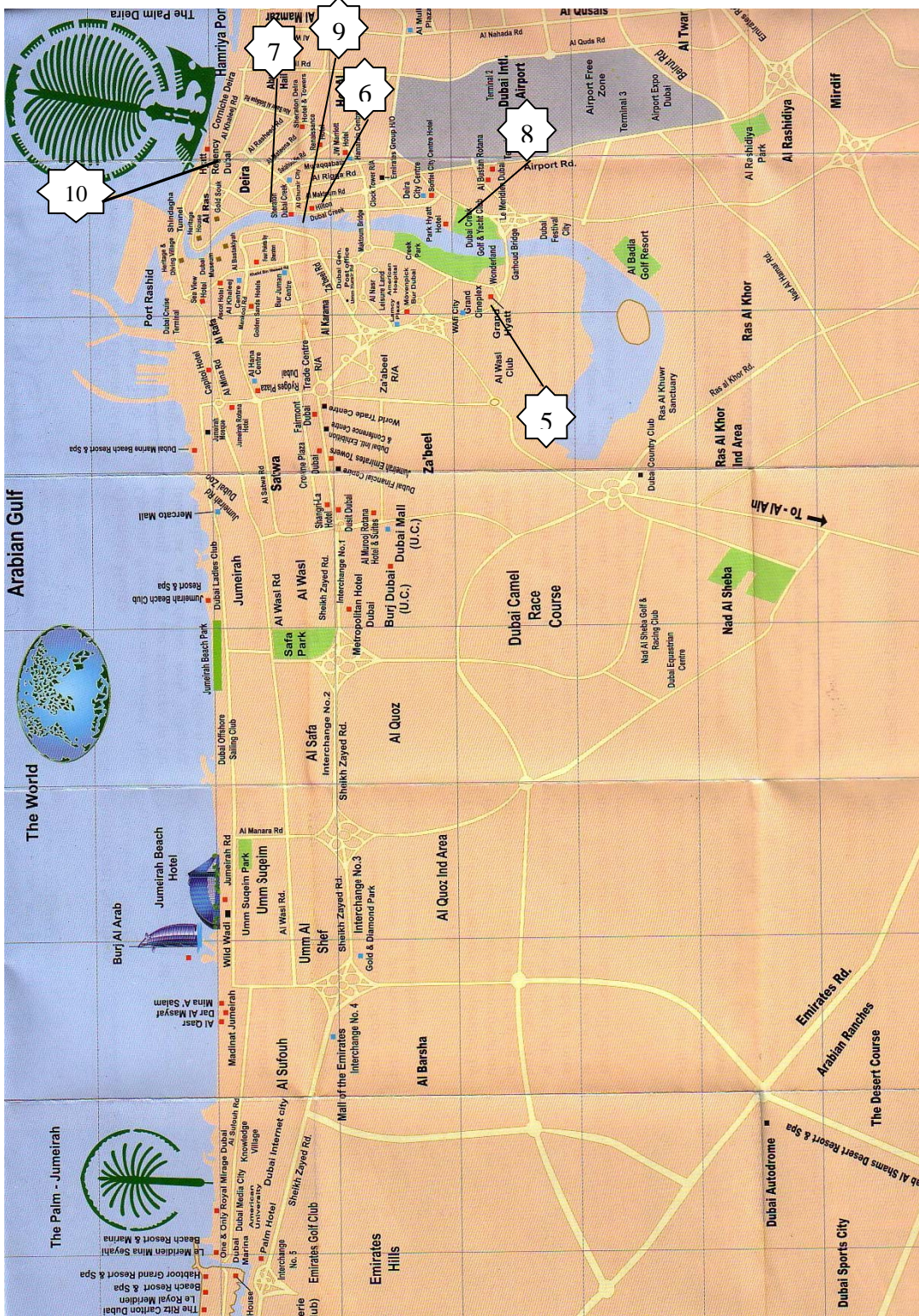


Abb. 218



Abb. 219



Abb. 220



Abb. 221



Abb. 222



Abb. 223



Abb. 224



Abb. 225



Abb. 226



Abb. 227



Abb. 228



Abb. 229



Abb. 230



Abb. 231



Abb. 232



Abb. 233



Abb. 234



Abb. 235



Abb. 236



Abb. 237



Abb. 238