

Aus dem Institut für Medizinische Genetik und Humangenetik
der Medizinischen Fakultät Charité – Universitätsmedizin Berlin

DISSERTATION

Pseudoautosomal Region 1 Length Polymorphism
in the Human Population

zur Erlangung des akademischen Grades
Doctor medicinae (Dr. med.)

vorgelegt der Medizinischen Fakultät
Charité – Universitätsmedizin Berlin

von

Martin Atta Mensah

aus Berlin

Datum der Promotion:
04. September 2015

Inhaltsverzeichnis

1. Abstracts	II
1.1 Deutscher Abstract.....	II
1.2 Englischer Abstract.....	III
2. Eidesstattliche Versicherung einschließlich Anteilserklärung	IV
2.1 Eidesstattliche Versicherung.....	IV
2.2 Ausführliche Anteilserklärung.....	IV
3. Auszug aus der Journal Summary List (ISI Web of KnowledgeSM)	VIII
4. Druckexemplar der ausgewählten Publikation mit Korrektur	IX
4.1 Druckexemplar der ausgewählten Publikation.....	IX
4.2 Druckexemplar der Korrektur der ausgewählten Publikation.....	X
5. Lebenslauf	XI
6. Komplette Publikationsliste	XII
7. Danksagung	XIII

1. Abstracts

1.1 Deutscher Abstract

Einleitung: An ihren beiden Enden verfügen die menschlichen Geschlechtschromosomen über je einen identischen Sequenzabschnitt. Diese beiden pseudoautosomalen Regionen (PAR) ermöglichen den ansonsten unterschiedlichen Geschlechtschromosomen eine korrekte Paarung und nachfolgende Aufteilung während der Meiose des Mannes. Die Grenze zwischen pseudoautosomaler Region 1 (PAR1) und den spezifischen gonosomalen Sequenzen entstand während der Aufspaltung der Menschenaffen. Nachdem die pseudoautosomale Region an ihrem proximalen Ende Material eingebüßt hatte, gilt sie als fortan stabil. Bei einem Screening auf Kopiezahlpolymorphismen haben wir in 15 voneinander unabhängigen Familien eine Duplikation unmittelbar proximal von PAR1 entdeckt. Obwohl diese Duplikation eine X-spezifische Sequenz beinhaltetete, wurde sie ausschließlich von Vater zu Sohn vererbt. Dies ließ vermuten, dass das Duplikon auf dem Y-Chromosom positioniert ist. Handelt es sich bei der Duplikation um eine evolutionär ältere Variante von PAR1 im Sinne einer „Non-Deletion“?

Methodik: Um diese Fragestellung anzugehen, wurden folgende Verfahren durchgeführt: aCGH, FISH, PCR mit Gelelektrophorese, BAC-vermittelte gezielte paired-end Hochdurchsatzsequenzierung, Sequenzierung nach Sanger, Einzelmolekülsequenzierung (PacBio) und Y-chromosomale Haplogruppenbestimmung mittels Y-STR Typisierung.

Ergebnisse: Diese genomische Analyse zeigte, dass es sich nicht um eine ältere, sondern um eine jüngere bisher unbekannte Variante der PAR1 handelt. Dieser die PAR1 um 105 kbp verlängernde Polymorphismus entstand durch eine nicht-allelische homologe Rekombination zwischen dem X- und dem Y-Chromosom, welche durch den nur 548 bp langen Repeat LTR6B vermittelt wurde. Die Identifikation der reziproken Deletion auf dem X-Chromosom einer Familie und das Vorkommen der Variante in verschiedenen Y-chromosomalen Haplogruppen zeigen, dass es sich dabei um ein wiederkehrendes genomisches Rearrangement in der menschlichen Population handelt.

Schlussfolgerung: Es gibt einen Längenpolymorphismus von PAR1 in der menschlichen Population. Pseudoautosomale Regionen verlieren an ihren proximalen Enden nicht nur genetisches Material, sondern können dort auch welches hinzugewinnen. Dieser neue, die gonosomale Evolution gestaltende Mechanismus könnte pseudoautosomale Regionen und folglich auch Y-Chromosomen vor einer voranschreitenden Degradation bewahren.

1.2 Englischer Abstract

Introduction: At each of their ends, the two human sex chromosomes feature a region of identical sequence. These two pseudoautosomal regions (PAR) enable a proper pairing and subsequent segregation of the apart from that different sex chromosomes during male meiosis. The border between pseudoautosomal region 1 (PAR1) and the specifically gonosomal sequences originated during the divergence of the great apes. After having lost genetic material from its proximal end, the pseudoautosomal region is considered to be henceforth stable. Doing a copy number variation screening, we detected a duplication immediately proximal of PAR1 in 15 independent families. Although comprising X specific sequence, this duplication was exclusively inherited from father to son. This suggested the duplicon to be positioned on the Y chromosome. Is this duplicon an evolutionarily older version of PAR1 in the manner of a “non-deletion”?

Methods: The following methods were used to tackle this issue: aCGH, FISH, PCR with gelelectrophoresis, BAC mediated targeted paired-end sequencing, Sanger sequencing, single molecule sequencing (PacBio) and Y-chr haplogroup and Y-STR typing.

Results: This genetic analysis demonstrated that the duplicon featured not an older but a so far unknown younger variant of PAR1. This polymorphism elongating PAR1 by 105kb was generated by a non-allelic homoulogous recombination between the X and the Y chromosome, which was mediated by the 548 bp long repeat LTR6B. The identification of the reciprocal deletion on the X chromosome in one family and the occurrence of the variant in different chromosome Y haplogroups demonstrate this is a recurrent genomic rearrangement in the human population.

Conclusion: There is a pseudoautosomal length polymorphism in the human population. Pseudoautosomal regions do not only lose genetic material from their proximal ends but can also gain it there. This new mechanism shaping the sex chromosomal evolution could spare pseudoautosomal regions and thus Y-chromosomes from a progressive degradation.

2. Eidesstattliche Versicherung einschließlich Anteilserklärung

2.1 Eidesstattliche Versicherung

„Ich, Martin Atta Mensah, versichere an Eides statt durch meine eigenhändige Unterschrift, dass ich die vorgelegte Dissertation mit dem Thema: „Pseudoautosomal Region 1 Length Polymorphism in the Human Population“ selbstständig und ohne nicht offengelegte Hilfe Dritter verfasst und keine anderen als die angegebenen Quellen und Hilfsmittel genutzt habe.

Alle Stellen, die wörtlich oder dem Sinne nach auf Publikationen oder Vorträgen anderer Autoren beruhen, sind als solche in korrekter Zitierung (siehe „Uniform Requirements for Manuscripts (URM)“ des ICMJE -www.icmje.org) kenntlich gemacht. Die Abschnitte zu Methodik (insbesondere praktische Arbeiten, Laborbestimmungen, statistische Aufarbeitung) und Resultaten (insbesondere Abbildungen, Graphiken und Tabellen) entsprechen den URM (s.o.) und werden von mir verantwortet.

Mein Anteil an der ausgewählten Publikation entspricht dem, der in der untenstehenden gemeinsamen Erklärung mit dem Betreuer, angegeben ist.

Die Bedeutung dieser eidesstattlichen Versicherung und die strafrechtlichen Folgen einer unwahren eidesstattlichen Versicherung (§156,161 des Strafgesetzbuches) sind mir bekannt und bewusst.“

Datum

Martin Atta Mensah

2.2 Ausführliche Anteilserklärung

Publikation : Mensah MA, Hestand MS, Larmuseau MHD, Isrie M, Vanderheyden N, Declercq M, Souche LE, Van Houdt J, Stoeva R, Van Esch H, Devriendt K, Voet Th, Decorte R, Robinson PN and Vermeesch JR (2014) Pseudoautosomal Region 1 Length Polymorphism in the Human Population. PLoS Genet 10(11): e1004578. Doi:10.1371/journal.pgen.1004578

Beitrag im Einzelnen:

Martin A. Mensah hat die Daten aus der aCGH der 15 Duplikations-Indexpatienten und ihrer

Angehörigen interpretiert. Er hat gemeinsam mit Radka Stoeva die FISH interpretiert. Die Primer für die PCR zur Überprüfung der YPAR1 Extension hat er entworfen, diese PCR und die anschließende Gelelektrophorese durchgeführt und deren Ergebnisse interpretiert. Er hat den BAC-Klon für die gezielte Sequenzierung der Duplikation von Patient 1 ausgewählt. Er hat den BAC-Klon biotinyliert, die genomische DNA fragmentiert, den BAC-Klon und die genomische DNA ausgefällt, aufgereinigt, denaturiert und beide hybridisiert. Er hat das Hybridisat aufgereinigt und für die Hochdurchsatzsequenzierung vorbereitet und gemeinsam mit Greet Peters durchgeführt. Er hat diese Sequenzierdaten interpretiert. Er hat die Primer zur Validierung der Insertionsposition entworfen, die entsprechende Sequenzierung nach Sanger durchgeführt und interpretiert. Er hat die Daten aus der aCGH der Deletions-Indexpatientin interpretiert, die Primer zur Validierung der Insertion entworfen, die zugehörige PCR, Gelelektrophorese und Sequenzierung nach Sanger durchgeführt und deren Ergebnisse interpretiert. Er hat gemeinsam mit Matthew S. Hestand und Matthias Declercq die Primer für die Einzelmolekülsequenzierung (PacBio) entworfen. Er hat mit Matthew S. Hestand die Ergebnisse aus dieser Sequenzierung interpretiert. Er hat mit Maarten H. D. Larmuseau die Ergebnisse aus der Y-STR Typisierung interpretiert. Er hat die PCR und Gelelektrophorese zur Identifikation weiterer Duplikationsträger mit der Y Haplogruppe I2a* durchgeführt und die Ergebnisse interpretiert. Gemeinsam mit Matthew S. Hestand, Maarten H.D. Larmuseau, Peter N. Robinson und Joris R. Vermeesch hat er das Manuskript der Publikation verfasst.

Mathew S. Hestand hat gemeinsam mit Martin A. Mensah und Matthias Declercq die Primer für die Einzelmolekülsequenzierung (PacBio) entworfen und die bioinformatische Prozessierung ihrer Rohdaten durchgeführt, die Ergebnisse hat er gemeinsam mit Martin A. Mensah interpretiert. Gemeinsam mit Martin A. Mensah, Maarten H.D. Larmuseau, Peter N. Robinson und Joris R. Vermeesch hat er das Manuskript der Publikation verfasst.

Maarten H.D. Larmuseau hat gemeinsam mit Nancy Vanderheyden und Ronny Decorte die Y-STR Typisierung und die bioinformatische Analyse ihrer Rohdaten durchgeführt. Die Daten hat er gemeinsam mit Martin A. Mensah interpretiert. Gemeinsam mit Martin A. Mensah, Matthew S. Hestand, Peter N. Robinson und Joris R. Vermeesch hat er das Manuskript der Publikation verfasst.

Hilde van Esch hat Patientenmaterial gewonnen und den klinischen Phänotyp einiger Patienten bestimmt.

Koen Devriendt hat Patientenmaterial gewonnen und den klinischen Phänotyp einiger Patienten bestimmt.

Nancy Vanderheyden hat gemeinsam mit Maarten H.D. Larmuseau und Ronny Decorte die Y-STR Typisierung und die bioinformatische Analyse ihrer Rohdaten durchgeführt.

Matthias Declercq hat die Einzelmolekülsequenzierung durchgeführt, die dazu nötigen Primer hat er gemeinsam mit Martin A. Mensah und Matthew S. Hestand entworfen.

Erika L. Souche hat gemeinsam mit Jeroen Van Houdt und Thierry Voet die bioinformatische Prozessierung der Rohdaten der gezielten Hochdurchsatzsequenzierung von Patient 1 durchgeführt.

Jeroen Van Houdt hat gemeinsam mit Erika L. Souche und Thierry Voet die bioinformatische Prozessierung der Rohdaten der gezielten Hochdurchsatzsequenzierung von Patient 1 durchgeführt.

Radka Stoeva hat Proben für die FISH ausgewählt und sie durchgeführt. Gemeinsam mit Martin A. Mensah hat sie die Ergebnisse der FISH interpretiert.

Mala Isrie hat Patientenmaterial gewonnen und den klinischen Phänotyp einiger Patienten bestimmt.

Thierry Voet hat gemeinsam mit Erika L. Souche und Jeroen Van Houdt die bioinformatische Prozessierung der Rohdaten der gezielten Hochdurchsatzsequenzierung von Patient 1 durchgeführt.

Ronny Decorte hat gemeinsam mit Maarten H.D. Larmuseau und Nancy Vanderheyden die Y-STR Typisierung und die bioinformatische Analyse ihrer Rohdaten durchgeführt.

Peter N. Robinson hat gemeinsam mit Martin A. Mensah, Matthew S. Hestand, Maarten H.D. Larmuseau und Joris R. Vermeesch das Manuskript der Publikation verfasst. Er hat Joris R. Vermeesch bei der Supervision des Projekts unterstützt.

Joris R. Vermeesch hat das gesamte Projekt supervidiert. Gemeinsam mit Martin A. Mensah, Matthew S. Hestand, Maarten H.D. Larmuseau und Peter N. Robinson hat er das Manuskript der Publikation verfasst.

Martin Atta Mensah

3. Auszug aus der Journal Summary List (ISI Web of KnowledgeSM)

Rank	Abbreviated Journal Title (linked to journal information)	ISSN	JCR Data						Eigenfactor [®] Metrics		
			Total Cites	Impact Factor	5-Year Impact Factor	Immediacy Index	Articles	Cited Half-life	Eigenfactor [®] Score	Article Influence [®] Score	
1	NAT REV GENET	1471-0056	26358	39.794	40.274	6.191	68	5.2	0.12696	20.650	
2	NAT GENET	1061-4036	81548	29.648	32.138	6.575	212	7.1	0.27566	16.173	
3	ANNU REV GENET	0066-4197	7015	18.115	22.113	0.231	26	8.2	0.02494	12.073	
4	TRENDS ECOL EVOL	0169-5347	26806	15.353	18.987	3.260	77	9.3	0.05433	8.214	
5	MOL BIOL EVOL	0737-4038	34971	14.308	10.494	1.824	238	6.6	0.08734	3.846	
6	GENOME RES	1088-9051	30995	13.852	14.927	2.938	192	5.7	0.14209	8.122	
7	GENE DEV	0890-9369	59234	12.639	12.765	2.181	226	9.4	0.16589	7.475	
8	TRENDS GENET	0168-9525	11015	11.597	10.213	1.571	77	8.7	0.03147	5.233	
9	AM J HUM GENET	0002-9297	33944	10.987	10.781	1.882	212	9.0	0.08026	5.087	
10	GENOME BIOL	1465-6906	19687	10.465	10.632	1.601	173	6.1	0.08273	5.623	
11	ANNU REV GENOM HUM G	1527-8204	2345	9.132	12.730	0.667	27	5.7	0.01041	6.246	
12	CURR OPIN GENET DEV	0959-437X	8165	8.568	7.824	1.461	89	7.0	0.03150	4.317	
13	ONCOGENE	0950-9232	62603	8.559	7.719	2.207	565	8.0	0.12643	2.858	
14	PLOS GENET	1553-7404	27581	8.167	8.901	1.272	842	3.6	0.18782	4.553	
15	MUTAT RES-REV MUTAT	1383-5742	2820	7.326	7.585	0.800	25	6.4	0.00678	2.379	
16	HUM MOL GENET	0964-6906	35897	6.677	6.968	1.617	449	6.8	0.10689	2.853	
17	GENET MED	1098-3600	4703	6.435	5.518	2.629	116	3.8	0.01933	2.141	
18	MOL THER	1525-0016	12709	6.425	6.351	1.897	213	5.0	0.03933	2.056	
19	J MED GENET	0022-2593	11436	5.636	5.640	1.083	108	8.6	0.02362	2.269	
20	PHARMACOGENOMIC S J	1470-269X	2233	5.513	4.531	1.147	75	4.8	0.00594	1.296	

Gezeigt sind die ersten 20 von 165 Journals in der Kategorie „Genetics & Heredity“ sortiert nach ihrem jeweiligen Impact Factor (http://admin-apps.webofknowledge.com/JCR/JCR?RQ=LIST_SUMMARY_JOURNAL abgerufen am

26.11.14)

4. Druckexemplar der ausgewählten Publikation mit Korrektur

4.1 Druckexemplar der ausgewählten Publikation



Pseudoautosomal Region 1 Length Polymorphism in the Human Population

Martin A. Mensah^{1,2}, Matthew S. Hestand¹, Maarten H. D. Larmuseau^{3,4,5}, Mala Isrie¹, Nancy Vanderheyden³, Matthias Declercq¹, Erika L. Souche¹, Jeroen Van Houdt¹, Radka Stoeva¹, Hilde Van Esch¹, Koen Devriendt¹, Thierry Voet¹, Ronny Decorte^{3,4}, Peter N. Robinson², Joris R. Vermeesch^{1*}

1 KU Leuven, Department of Human Genetics, Leuven, Belgium, **2** Institut für Medizinische Genetik und Humangenetik, Charité - Universitätsmedizin Berlin, Berlin, Germany, **3** UZ Leuven, Laboratory of Forensic Genetics and Molecular Archaeology, Leuven, Belgium, **4** KU Leuven, Department of Imaging & Pathology, Biomedical Forensic Sciences, Leuven, Belgium, **5** KU Leuven, Department of Biology, Laboratory of Biodiversity and Evolutionary Genomics, Leuven, Belgium

Abstract

The human sex chromosomes differ in sequence, except for the pseudoautosomal regions (PAR) at the terminus of the short and the long arms, denoted as PAR1 and PAR2. The boundary between PAR1 and the unique X and Y sequences was established during the divergence of the great apes. During a copy number variation screen, we noted a paternally inherited chromosome X duplication in 15 independent families. Subsequent genomic analysis demonstrated that an insertional translocation of X chromosomal sequence into the Ma Y chromosome generates an extended PAR. The insertion is generated by non-allelic homologous recombination between a 548 bp LTR6B repeat within the Y chromosome PAR1 and a second LTR6B repeat located 105 kb from the PAR boundary on the X chromosome. The identification of the reciprocal deletion on the X chromosome in one family and the occurrence of the variant in different chromosome Y haplogroups demonstrate this is a recurrent genomic rearrangement in the human population. This finding represents a novel mechanism shaping sex chromosomal evolution.

Citation: Mensah MA, Hestand MS, Larmuseau MHD, Isrie M, Vanderheyden N, et al. (2014) Pseudoautosomal Region 1 Length Polymorphism in the Human Population. *PLoS Genet* 10(11): e1004578. doi:10.1371/journal.pgen.1004578

Editor: Bret A. Payseur, University of Wisconsin-Madison, United States of America

Received: January 6, 2014; **Accepted:** July 7, 2014; **Published:** November 6, 2014

Copyright: © 2014 Mensah et al. This is an open-access article distributed under the terms of the Creative Commons Attribution License, which permits unrestricted use, distribution, and reproduction in any medium, provided the original author and source are credited.

Funding: MAM is a scholarship holder of ES Villigst. MSH is a postdoctoral fellow at KU Leuven supported by F+/12/037. MHD is postdoctoral fellow of FWO-Vlaanderen. This work was made possible by grants from the KUL PFV/10/016 SymBioSys to JRV and TV and GOA/12/015 to JRV, HVE and KD. The funders had no role in study design, data collection and analysis, decision to publish, or preparation of the manuscript.

Competing Interests: The authors have declared that no competing interests exist.

* Email: joris.vermeesch@uzleuven.be

Introduction

The human sex chromosomes originate from an ancestral homologous chromosome pair. During mammalian evolution, these chromosomes lost homology due to progressive degradation of the Y chromosome. The decay of the Y chromosome started with the introduction of sex determination factors, which initiated subsequent cycles of suppressed recombination [1]. Two main mechanisms are usually invoked to explain the reduction of XY homology. Reduced recombination rates near the pseudoautosomal boundary (PAB) would result in an accumulation of mutations which ultimately result in the inability to recombine [2]. Suppressed recombination led to the gradual decline in recombination. In addition, a stepwise reduction of recombination has been observed in the mammalian Y chromosome. Based on the nucleotide divergence between the human X and Y chromosome, nine different regions, termed strata, can be distinguished [3,4]. It has been speculated that chromosomal rearrangements, such as inversions, might explain the stepwise decrease in sequence similarity between genes ordered on the human X chromosome and their homologs (called “gametologs”) on the Y chromosome [3]. Nevertheless, comparative genomic analysis has failed to identify such inversions [5,6]. Hence, the forces driving recombination suppression remain to be established.

The observation of a gradual demise of the Y chromosome has led to speculations that, from an evolutionary perspective, the Y chromosome is doomed to extinction [7,8]. In contrast, recent evidence suggests that gene loss has been limited over the past 25 million years [9]. However, the Y chromosome is not only shaped by loss of genes and gene functions, but also by addition of genes as a result of interchromosomal exchanges. An autosome to gonosome translocation occurred after the divergence of the placental mammals from marsupials, increasing the size of the eutherian gonosomes [10]. Similarly, chromosomal regions known to be autosomal in different mammals seem to have translocated to the subtelomeric region of the long arm of the X chromosome during great ape evolution and subsequently to both the X and Y chromosome subtelomeres during hominid evolution [11,12]. There remain two regions of homology: the 2.7 Mb pseudoautosomal region 1 (PAR1) at the telomeres of the short arms and the 0.3 Mb human specific PAR2 at the termini of the long arms [2,13]. These XY homologous regions are required for pairing and synapse formation resulting in the obligate cross-over which is required for proper chromosome segregation during mammalian meiosis. Although often perceived as stable, it is well known that genes in the human PAR1 show elevated divergence with their primate orthologs and high levels of structural polymorphism. [14–17].

Author Summary

The human sex chromosomes differ in sequence, except for homologous sequences at both ends, termed the pseudoautosomal regions (PAR1 and PAR2). PAR enables the pairing of chromosomes Y and X during meiosis. The PARs are located at the termini of respectively the short and long arms of chromosomes X and Y. The observation of gradual shortening of the Y chromosome over evolutionary time has led to speculations that the Y chromosome is “doomed to extinction.” However, the Y chromosome has been shaped over evolution not only by the loss of genes, but also by addition of genes as a result of interchromosomal exchanges. In this work, we identified males with a duplication on chromosome Xp22.33 of about 136 kb as an incidental finding during a copy number variation screen. We demonstrate that the duplicon is an insertional translocation due to non-allelic homologous recombination from the X to the Y chromosome that is flanked by a long terminal repeat (LTR6B). We show this translocation event has occurred independently multiple times and that the duplicated region recombines with the X chromosome. Therefore, the duplicated region represents an extension of the pseudoautosomal region, representing a novel mechanism shaping sex chromosomal evolution in humans.

Relative to other mammalian species with a characterized PAR, the human PAB (i.e. PAB1; the human specific PAR2 has no counterpart in other genomes) is positioned distally. The PAB maps within the gene coding for one of the XG blood group antigens [18,19]. XG is disrupted on the Y chromosome, and thus lacks nine exons on its 3' end. The PAB was probably created by the intrachromosomal transposition of a chromosome fragment including the sex-determining region Y (*SRY*) gene [20]. Over time the PAB has shifted about 240 bp into the PAR by attrition, accounting for the fact that the PAR is flanked by a 240 bp segment of reduced homology (~77%) on its proximal side [21]. An Alu element is located at the human PAB, but this is believed to have inserted after the divergence of old world monkeys and great apes and therefore did not create the PAB [22]. Hence, the PAB has remained stable since the divergence of the great apes and is considered stable in the Catarrhini lineage [1,22]. Here we demonstrate that a previously undiscovered PAR1 length polymorphism exists in the human population as a result of recent recurrent chromosomal rearrangements that shifts the PAB by 110 kb towards the centromere.

Results

Segmental X Chromosomal Duplication Inserted in Y

To identify pathogenic copy number variants in patients with developmental disorders, we screened ~4300 individuals (~60% male) by microarrays. This screening identified 15 male patients of mainly Belgian origin carrying a duplication with a minimum size of 98,630 bp and of maximum 136,609 bp on Xp22.33 (Figure 1 A). To determine whether the duplication occurred *de novo* or was inherited, arrays were performed on both parents in all 6 families for which parental blood samples could be obtained. We had assumed that the duplicon would have arisen *de novo* or would be inherited from the mother, since males inherit their X chromosome from the mother. However, the duplication was paternally inherited in all families.

Based on the paternal inheritance, we hypothesized the duplicon resided on the Y chromosome. To test this hypothesis

and to determine the location of the duplicon, we performed FISH on metaphases from one index, his father, and a male control using probes to target PAR1 and the duplicated region. We observed PAR1 signals on both X and Y chromosomes in all samples (Figure 1 C). The duplicated region was found on the X chromosome in the index, father, and control, but was also found on the Y chromosome of the index and father (Figure 1 C). The FISH analysis demonstrates that the X duplicon is actually located on the Y chromosome at or near the short arm pseudoautosomal region.

Since the duplicated region appeared to be adjacent to the X-linked PAR1, we reasoned that the Y chromosome copy would also be adjacent to the Y-linked PAR1. If so, the regular Y-PAR1 boundary would be disrupted in carriers and a PCR spanning the Y-PAR1 boundary should result in an amplification product in controls, but not in duplication carriers (Figure S1). As expected, the Y-PAR1 boundary specific PCR resulted in an amplification product in normal males, but not in females. In contrast to our hypothesis, the same amplicon was observed in carrier males (Figure S1 D). Hence, the duplicon is not a mere extension of Y-PAR1.

To elucidate the exact location of the duplicon on the Y chromosome we performed targeted capture using a BAC spanning the duplicon as a bait, followed by Illumina sequencing for patient P1. The capture resulted in a 1228.4 fold enrichment of the insert region and generated on average 348,529 reads over the bait. Since the BAC spans the duplicon, it was expected that some paired-ends would map back to different locations in the Y chromosome reference sequence, and that some reads would feature split sequences. Unexpectedly, no chimeric pairs or split reads could be detected.

Upon closer scrutiny of the aligned reads, the PAB region featured three different types of reads: reference Y-PAB reads, reference X-PAB reads, and SNP containing X-PAB reads. The PAB also showed three stretches of heterozygous SNPs: a 33% allele frequency region flanked by two 50% allele frequency regions (Figure 1 D). Since males should have no heterozygous SNPs in their hemizygous X-specific sequences and pseudoautosomal SNPs should show allele ratios of 50% we hypothesized that one portion of the pseudoautosomal region was duplicated. Indeed, the 33% allele frequency region and the proximal 50% allele frequency region represent a duplication event while the distal 50% allele frequency region represents the normal pseudoautosomal SNPs. The breakpoint was delineated by selecting the most proximal (chrX:2,694,303) SNP with an allele frequency of 50% and the most distal (chrX:2,694,429) SNP with an allele frequency of 30%. Interestingly, those SNPs both lie in a long terminal repeat, LTR6B, chrX:2,694,151-2,694,702 (551bp). The most proximal 50% allele frequency SNP was also near a second LTR6B repeat, chrX:2,808,549-2,809,097 (548 bp). These repeats explain that more than 99% of the reads mapping around the SNP frequency changes feature a mapping quality of 0, an indication of reads that map to multiple locations. The presence of these repeats at both sides of the duplicon also explain the absence of chimeric pairs and split reads. The duplicon thus comprises 110 kb of X-specific sequences as well as 5 kb proximal PAR1, resulting in the construct illustrated in Figure 2 A. The 5 kb sequence is present as three copies in the patient (once on his normal X chromosome and twice on his Y chromosome with the X insertion), which explains the 33% SNP ratio profile as well as the presence of three different kinds of reads at the PAB.

To verify the boundary was at the LTR6B in the index patients and their fathers, PCR was performed using one primer located in the distal PAR1 and another located in the X-specific region distal

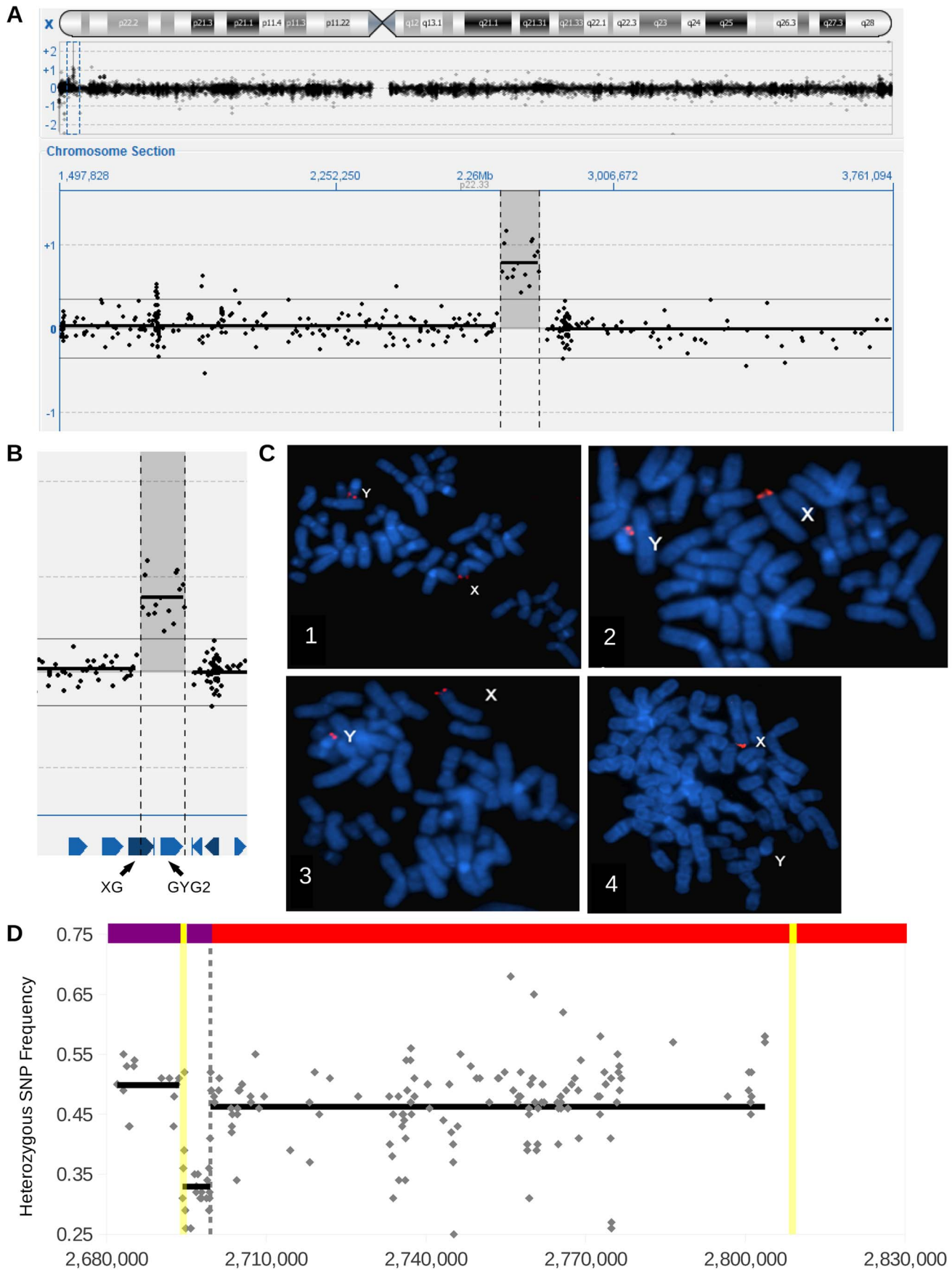


Figure 1. Identification of an X specific insertional translocation in Y. (A) Determining a duplication by array-CGH using a 180K Custom Microarray. The upper track shows an overview of the log₂-ratio of the fluorescent signal across the entire X chromosome. The central track shows a zoomed in portion of the X chromosome, with the log₂-ratio of the fluorescent signals on the Y Axis. (B) Further zooming in on the duplication, including the location of genes XG and GYG2. (C) FISH results for a father carrier (1, 3) and male control (2, 4) using probes targeting PAR1 (1, 2) and the duplicated region (3, 4). Note the presence of PAR1 on X and Y chromosomes in the carrier father and control, the PAR flanking probe on the X chromosome in both individuals, but the X insertion signal is found only on the Y chromosome of the carrier father. (D) The heterozygous SNP profile from Illumina sequencing of patient P1 for hg19 chrX:2,680,000-2,830,000. The dashed vertical gray line indicates the pseudoautosomal boundary, the yellow vertical lines illustrate LTR6B positions, gray diamonds illustrate heterozygote SNPs, and the black horizontal lines indicate mean frequencies of all depicted SNPs in the span of the line. Across the top is illustrated chromosome X, with unique X sequence in red, PAR1 reference sequence in purple, and LTR6B's in yellow. Note the presence of heterozygote SNPs in the X specific region, and the SNPs featuring frequencies of 0.33 in the proximal PAR1.

doi:10.1371/journal.pgen.1004578.g001

to the duplison boundary and predicted to span the LTR6B (Figure 2 A, green primers). Not only are these primers separated by 115 kb in the reference genome, but they also have opposite orientations. As expected, the PCR generated an amplicon in carrier males, but not in male or female controls (Figure 2 B). To confirm the presence of the LTR6B in the amplicon, the PCR products were Sanger sequenced, confirming they contained respectively a PAR1 specific fragment, LTR6B, and an X specific sequence (Figure 2 C). These results demonstrate that the duplison is an insertional translocation from X to Y that is flanked by LTR6B.

A Reciprocal Deletion

During the initial screening for pathogenic copy number variants we also identified a patient carrying a reciprocal deletion (Figure 3 A). Familial analysis showed both the female index as well as the father and sister to be carriers. We hypothesized the deletion to be reciprocal to the duplication and to have occurred by non-allelic homologous recombination (NAHR) between the LTR6Bs, thus comprising chrX:2694151-2808549 (i.e. from one to the other LTR6B). To confirm this hypothesis we designed a PCR using one primer distal and one proximal of this range. The primer sites are 115 kb apart so the PCR should fail in any individual except those featuring a deletion between them. As expected, the PCR generated an amplicon in the three carriers, but not in male or female controls (Figure 3 B). Therefore, we concluded that the deletion corresponds to the duplication described above. This was verified by Sanger sequencing the index carriers amplicon. The sequence showed an LTR6B featuring an X-specific profile at the region-specific LTR6B positions 2, 10, and 15, and a PAR1-specific profile at positions 3 to 9 and 11 to 14. Position 1 was not sequenced (Figure 3 C). A G was sequenced at rs2534626/2316283. We considered this confirmation that a deletion of chrX:2694151-2808549 results in a merged LTR6B.

The Insertional Translocation Occurs Recurrently

The Y-PAR1 extension observed in the different families could have arisen as a single ancient insertional translocation event or might have occurred recurrently. The finding of a reciprocal deletion supports the latter, but to provide additional evidence the relatedness of the Y chromosomes containing the Y-PAR1 extension was determined by chromosome Y SNP/STR typing. All six father Y haplotypes were identical to their index sons. The carriers featured two main Y-chromosomal haplogroups: all 20 carriers of Belgian origin featured haplogroup I (sub-haplogroup I2a*; I-P37.2*) and the two French carriers featured haplogroup R (sub-haplogroup R1b1b2a1a2*; R-P312*)(Figure S2). A comparative Y-STR network analysis with other autochthonously Belgian I2 (I-P215) samples revealed that all but one of the I2a* haplotypes displaying an elongated PAR1 belonged to two closely related clusters (Figure 4). While these two clusters were related to the

other I2a* samples earlier observed in the Belgian population the highly distinct I2a*-haplotype appeared to be more closely related to haplogroup I2b1* (I-M223*). Within each of the two clusters of I2a* haplotypes a high paternal kinship was observed as most of their haplotypes differed from each other in less than eight Y-STR loci. According to the mutation rates measured by Ballantyne et al. [23] and the formulae of Walsh [24] the latest common patrilineal ancestors of the largest cluster lived between 7 and 33 generations ago (95% credibility interval), i.e. between 1185 and 1835 (generation span of 25 years) or 855 and 1765 (generation span of 35 years). To determine whether more individuals with the Y-chromosomal sub-haplogroup I2a* carry the described duplison, we analyzed two additional sub-haplogroup I2a* Belgian individuals (identified as § in Figure 4). Interestingly the Y-extended PAR1 boundary PCR described above also generated amplicons in these individuals. We therefore conclude that the majority of – if not all – I2a* Y chromosomes carry the duplison.

The Insertional Translocation in Y Recombines with X

Formal proof that the extended PAR sequence is truly pseudoautosomal would be the demonstration of recombination events within the duplison between X and Y. We show two lines of circumstantial evidence that this is the case.

First, we amplified ~5 kb of the distal duplicated region and sequenced the amplicons using long-read single molecule sequencing by PacBio. Haplotypes were phased and all family members were found to share one of three X specific haplotypes (Figure 2 D). All fathers and sons shared at least one similar X specific haplotype, confirming the paternally inherited haplotype. Notably, only family 4 did not have paternal inheritance from the large haplotype groups 1 or 2. This family was also the only family with haplogroup R from Y-Chromosomal STR typing, and was the only non-Belgian family, confirming its distant and independent origin. Oddly, two samples (P10 and P15), did not have a single unphased contig (indicating two identical amplicons) or a single contig with phasing (indicating the same target amplicon sequence with small nucleotide differences). They instead featured one unphased contig resembling the targeted X region (P10 56xcoverage, P15 81xcoverage) and one contig with less coverage (P10 38xcoverage, P15 32xcoverage) matching a highly similar (95%) region of the Y chromosome.

Despite the observation that all I2a* sub-haplogroup members are derived from an ancient NAHR recombination event, there are at least two different extended PAR haplotypes on the Y chromosomes (Table 1). The different haplotypes on Y could have developed through historical mutational events or as a product of recombination between the X chromosome and the duplication insertion on the Y chromosome. Since the two main haplotypes differ by twelve variants we believe recombination is a more likely event.

Second, ~5 kb amplicons spanning the Y-extended PAR junction were PacBio sequenced and the smaller PCR amplicons

Figure 2. Sequencing to validate the insertion and demonstrate recurrence. (A) Illustrations of a reference Y chromosome, a reference X chromosome, and a Y chromosome with an X insertion. X specific sequence is indicated in red, Y specific sequence in blue, PAR1 reference sequence in purple, and LTR6B's in yellow. Arrows indicate primer pairs, with a bar representing an amplifiable product. The position of the SNPs of this study is shown in the order found in the amplicon. (B) PCRs using the Sanger.Junc primers shows bands for patients (P) and fathers (F), but not mothers (M), male controls (mc), female control (fc) or negative controls (neg), confirming the presence of an X specific insertional translocation in Y. (C) Sequenced amplicons of PCRs from part B, excluding reference upstream/downstream sequence. Red letters are from the X specific reference sequence. Yellow letters are from LTR6B reference sequence with red highlights indicating X specific LTR6B sequence and purple highlights indicating sequence specific for pseudoautosomal LTR6B. Purple letters indicate pseudoautosomal reference sequence. The gap underlined in red indicate bases missing from the X specific LTR6B. In black are annotated SNPs/Indels. In order from the beginning to the end of sequences, green boxes indicate SNP positions for rs2534625/rs12843082, rs2316283, rs2534627, and rs2857320. This Sanger sequencing identified two junction types, indicated as Junc1 and Junc2. (D) Phased haplotypes found through PacBio amplicon sequencing of the PacBio Duplication amplicons, with haplotypes assigned numbers indicated by gray boxes. Families in which both the patient and father were sequenced are color coded. No color indicates a sample in which the father was not sequenced. * Each individual has two haplotypes in the figure, except patients 10 and 15, which had a second unillustrated haplotype with many more variants that more closely resembled Y chromosome sequence. doi:10.1371/journal.pgen.1004578.g002

spanning the boundary were Sanger sequenced. Within the Sanger sequenced region, the reference LTR6B sequences marking the duplcon's borders differ between each other at 15 positions (Figure 2 C). All carrier Sanger sequences had the same distal 13 differences that match the X-specific LTR6B. However, the proximal two differences (SNP rs2534625/rs12843082 and a single indel) were only found in the LTR6B sequence of a subset of carriers. Carriers with the two variants also had an additional non-reference LTR6B sequence variation (rs2316283). We labeled the additional variant containing sequence as Junc1 and the more X-specific sequence as Junc2. All carriers also showed three variants in the pseudoautosomal reference sequence: an A at rs2534627, a T at rs2857320, and [CAA]₅ at rs34061732. PacBio amplicon sequencing of the duplcon border identified variants upstream of the Sanger sequencing for rs211654, rs10625422, and rs211655 in

all samples with longer amplicon lengths (Table S2, all samples except P10-13). In the region overlapping the Sanger sequences, all PacBio amplicons showed perfect concordance with the Sanger calls. Additionally, a Junc1 carrying an additional SNP (rs211656) was found in a single PacBio amplicon (termed Junc1c in Table 1). To conclude, within the I2a* sub-haplogroup members, two different Y-extended PAR junctions were identified. Junc1 is a recombination between the distal X specific LTR6B and the proximal PAR specific LTR6B, a consequence of the non-allelic recombination event. In Junc2, the original X specific LTR6B is observed. The most likely explanation is that a recombination event occurred in the manner of gene conversion with the X-linked LTR6B serving as the donor and the Y-linked LTR6B as the acceptor reconstituting the original X specific LTR6B sequence. Another possibility is that a recombination event

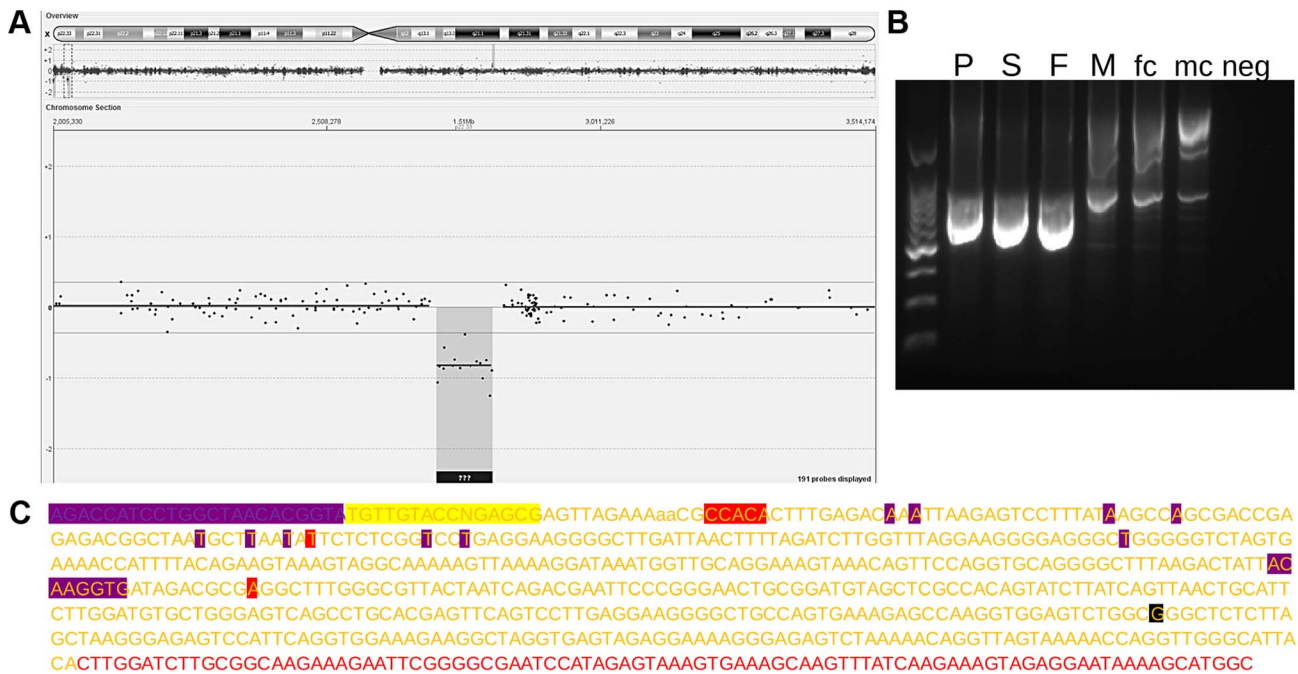


Figure 3. Reciprocal deletion. (A) 180K Custom Microarray aCGH results with the upper track displaying an overview of the log₂-ratio of the fluorescent signal across the entire X chromosome and the central track displaying a zoomed in portion of the X chromosome, with the log₂-ratio of the fluorescent signals on the Y Axis. (B) PCR bands across the deletion region for the deletion carrying patient (P), father (F), mother (M), sister (S), female control (fc), male control (mc), and negative control (neg). (C) Sequencing of the amplicon in part B for the patient. Red letters indicate X specific reference sequence, yellow letters indicate LTR6B reference sequence, yellow letters highlighted in red indicate sequence specific for X specific LTR6B, yellow letters highlighted in purple indicate sequence specific for pseudoautosomal LTR6B, purple letters highlighted in purple indicate sequence originated from PAR1 that was not sequenced but contains the forward primer site, and yellow letters highlighted in yellow indicate LTR6B sequence that was not sequenced but contains the forward primer site. Highlighted in black are annotated SNPs. doi:10.1371/journal.pgen.1004578.g003

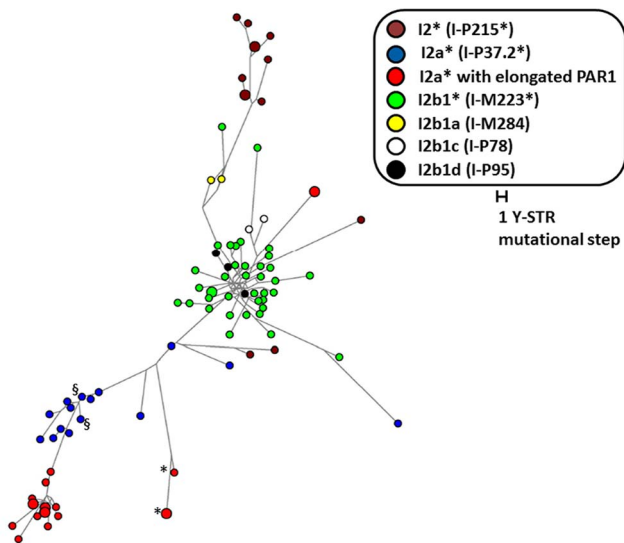


Figure 4. Y Chromosome relatedness of all I2 Y chromosomes. Median joining network based on 26 single-copy Y-STR loci of all I-P215 Y chromosomes observed in the Belgian male population by Larmuseau et al. [53,54,56], next to the I2a* (I-P37.2) samples with two PAR-regions. The sizes of the circles are proportional to the haplotype frequency (i.e. 1 or 2 individuals). All I2a* circles with an expanded PAR representing two individuals are father-son pairs. The color of the circles represents the sub-haplotype to which the haplotype belongs based on Y-SNP typing. * indicates samples identified to contain Junc2 (see Figure 2 C) and § indicates additional samples with an elongated PAR. doi:10.1371/journal.pgen.1004578.g004

occurred within this LTR6B between the distal and proximal parts of the fusion LTR6B reconstituting the original X specific LTR6B sequence.

Discussion

PAR1 is common to most eutherian mammals, with a gene order that has been fairly well-conserved since its addition to the pre-existing sex chromosomes that are shared with marsupials [25]. However, the PAB has shifted over evolutionary time and both the size and gene content of PAR1 differ among mammalian species, implying genes within the ancestral PAR have been differentially subsumed into the non-recombining regions in different mammalian lineages [2]. In general, there is evolutionary pressure to expand the non-recombining region resulting in contraction of the PAR. This attrition is attributed to recombination suppression of sex determining region flanking regions. This PAR attrition is counteracted by the addition of new PAR sequences via translocations. Such terminal translocation patterns have shaped the human PAR1 and PAR2 [25]. Here we demonstrate that an apparent male specific X chromosomal copy variant flanking PAR1 represents a PAR1 length polymorphism. The duplication causes a 110 kb proximal extension of PAR1.

The PAR1 extension resulted from an insertional translocation event, caused by non-allelic homologous recombination (NAHR) between the LTR6B repeats, one of which is located within PAR1 and one in the X-specific region (Figure 5). This PAB length polymorphism could reflect either an ancient PAB which has shifted during hominoid evolution or could be a *de novo* event which has occurred during recent human evolution. Several lines of evidence suggest the latter. First, the PAB in great apes and macaques coincides with the human reference PAB. Hence, for this PAB polymorphism to be ancient, it should have arisen during

hominoid evolution and subsequently be lost in the majority of our population. Second, the analysis of chromosome Y haplotypes carrying this duplicon shows the presence of this rare variant in different haplogroups which are phylogenetically unrelated (Figure S2) and from different geographic locations, together with an absence of the rare variant in other haplogroups. To be the PAB predecessor, it would have to be lost several times during human evolution. Hence, the most parsimonious explanation is that the PAB polymorphism is caused by independent, but identical, insertional translocation events. In addition, the identification of one family carrying the reciprocal microdeletion which results in a 5 kb reduction of PAR1 on the X chromosome demonstrates that NAHR at the X and Y LTR6B repeats is recurrent.

We not only show sequence homology of the extended PAR region, but provide strong evidence for recombination. This provides formal proof that the extended PAR also acts functionally as a pseudoautosomal sequence. Since all the haplogroup I2a* individuals are ancestrally related, the PAR1 extension is likely to be the consequence of a single insertional translocation event. Nevertheless, different X haplotypes exist in the Y of this haplogroup I2a*. We therefore assume that those haplotypes have been introduced by X-Y recombination. Second, three (four if including Junc1c) of those males have a different junction (Junc2) as compared to the majority of this haplogroup. We deduced that Junc1 is generated by the insertional translocation event and that Junc2 has arisen by X-Y recombination within the X specific LTR6B.

Insertional translocation events are thought to be the consequence of at least three chromosomal breaks resulting in an interchromosomal transposition of a broken fragment (2 breaks) into another chromosome (at least one break). The exact mechanism by which insertional translocations are generated remains, however, to be established. Interestingly, Durkin, et al. [26] showed that several insertional translocation events in cattle genome evolution have occurred via a circular intermediate which subsequently integrated into the receptor chromosome. Here, we present, to our knowledge, the first example of an insertional translocation which is generated by NAHR. Whereas the duplicon is technically an insertional translocation, it has mechanistically arisen because of a terminal translocation event between the long terminal repeat (LTR) in unique X chromosomal sequence and the LTR in the XY homologous region. Several reciprocal balanced and unbalanced translocations have been shown to be the consequence of NAHR between different chromosomes [27]. This translocation event can be considered mechanistically similar. In contrast to the known low copy repeats (LCRs) that generate NAHR events, the LTRs here are extremely short, with only 548 bp homology. Hence, opposite to the general view that only LCRs larger than several kb are drivers of genomic disorders [28,29], this observation provides further proof that short repeats also have to be considered as drivers of illegitimate recombination [30,31].

Whether NAHR is a common mechanism for the generation of insertional translocations remains to be determined. Nevertheless, it is tempting to speculate that the proximal PAB expansion detected amongst mouse subspecies also occurred as a consequence of an interstitial NAHR mediated translocation event. The house mouse, *Mus musculus domesticus*, has the smallest PAR amongst those that have been mapped. The PAB is located at about 700 kb from the distal end of the X chromosome, the third intron of the *Mid1* gene and truncates the 5' end of the Y copy. However, in *Mus musculus castaneus*, a subspecies of the house mouse, the PAB shows a 430 kb shift proximal of the *M.m.domesticus* boundary. The dichotomy in sequence divergence between the proximal and distal segments of the *M.m.castaneus*

Table 1. Sample overview.

Family	Sample	Sanger.Junc	PacBio.Junc	Duplication.Haplotype	Y-chr haplogroup
1	P1	1	1	1*/4	I
1	F1	1	1	1*/o	I
1	B1	1	1	1*/2	I
2	P2	1	1	1*/2	I
2	F2	1	1	1*/4	I
3	P3	1	1	1/2	I
3	F3		1	1/2	I
4	P4	1	1	3*/2	R
4	F4	1	1	3*/o	R
5	P5	2	2	2*/o	I
5	F5	2	2	2*/2	I
6	P6	1	1	2*/2	I
6	F6	1	1	2*/4	I
7	P7	1	1	1/2	I
8	P8	1	1	1/2	I
9	P9		1	1/1	I
10	P10		2	2/o	I
11	P11		1	1/2	I
12	P12		1c	failed	I
13	P13		1	1/2	I
14	P14	1	1	1/o	I
15	P15		1	2/o	I

If appropriate, each sample has indicated family and relationship: P -patient, B -brother, F -father, Sanger.Junc is the sequencing results of Figure 2 C. PacBio.Junc indicates the breakpoint haplotype deduced from the PacBio amplicons. 1c is the same as junction 1, with the addition of SNP rs211656. Duplication.Haplotype indicates the PacBio phased alleles from the duplicated region found in Figure 2 D (o = other haplotype). * indicates the deduced allele of paternal origin in father-son (brother) pairings. Y-chr haplogroup is the main haplotype groups from chromosome Y SNP-based analyses (Figure S2). doi:10.1371/journal.pgen.1004578.t001

PAR suggests the proximal segment is a recent translocation of X chromosome sequence to the Y chromosome. Interestingly, the Y specific PAB of *M.m.castaneus* is characterized by a long interspersed nuclear element (LINE1) that is present throughout the mouse genome [32]. Since NAHR between line elements has been suggested as a cause of chromosomal rearrangements [33,34] it seems plausible that it originated by the same NAHR mechanism. Sequencing of more PABs in other species and populations will probably reveal more pseudoautosomal boundary polymorphisms.

Variation in the PAR boundary is likely to have consequences for the expression of both adjacent genes situated in the duplicon: *XG* and *GYG2* (Figure 1 B). *XG* encodes a surface protein expressed on red blood cells that belongs to a clinically irrelevant blood group system [35]. *GYG2* encodes glycogenin-2, the predominant glycogenin isoform in the liver, which serves as a primer for glycogen synthase [36,37]. Since the duplication is inherited in all families where the inheritance could be determined and since the duplication can be traced within most likely all I2a* sub-haplogroup members, it seems clear that this variant does not cause developmental anomalies or observable adverse fitness effects. Loss of *XG* and *GYG2* may, however, have biochemical consequences and is likely to result in reduced fitness. Based on the paternal origin of the deletion and the apparent normal phenotype of the father, any effect of nullisomy of both those genes is likely to be minor. However, follow up of this family as well as the detection of more patients with this deletion is required to establish potential phenotypic effects.

In conclusion, we demonstrate that a pseudoautosomal length polymorphism exists in the human population. The extension of the PAR by NAHR presents a novel mechanism shaping sex chromosomal evolution. It seems plausible that such events have occurred frequently during genome evolution. In addition to the already known deceleration of Y chromosome degradation, our results demonstrate a new way of counteracting the processes leading to a loss of Y chromosomes in humans since a proximally extending PAR1 reconstitutes X-borne genetic material thought to be lost from the Y. Thus, if true, current predictions on when the Y chromosome will be lost from humans [38] need to be adapted for the effects of proximally extending PARs. The finding of this length polymorphism also has consequences for statistical genetic analysis in this region since recombination events may alter the haplotype structure periodically.

Materials and Methods

Ethics Statement

The study of variants in the human population is part of the analysis of copy number variants coming from an institutional genome wide analysis study. This has been approved by the institutional review board under protocol nr. S55513.

Sample Collection, Cytogenetic, FISH, and Array Analysis

Blood samples were obtained from 16 patients, 13 parents, and 2 siblings referred for cytogenetic investigation due to the presence

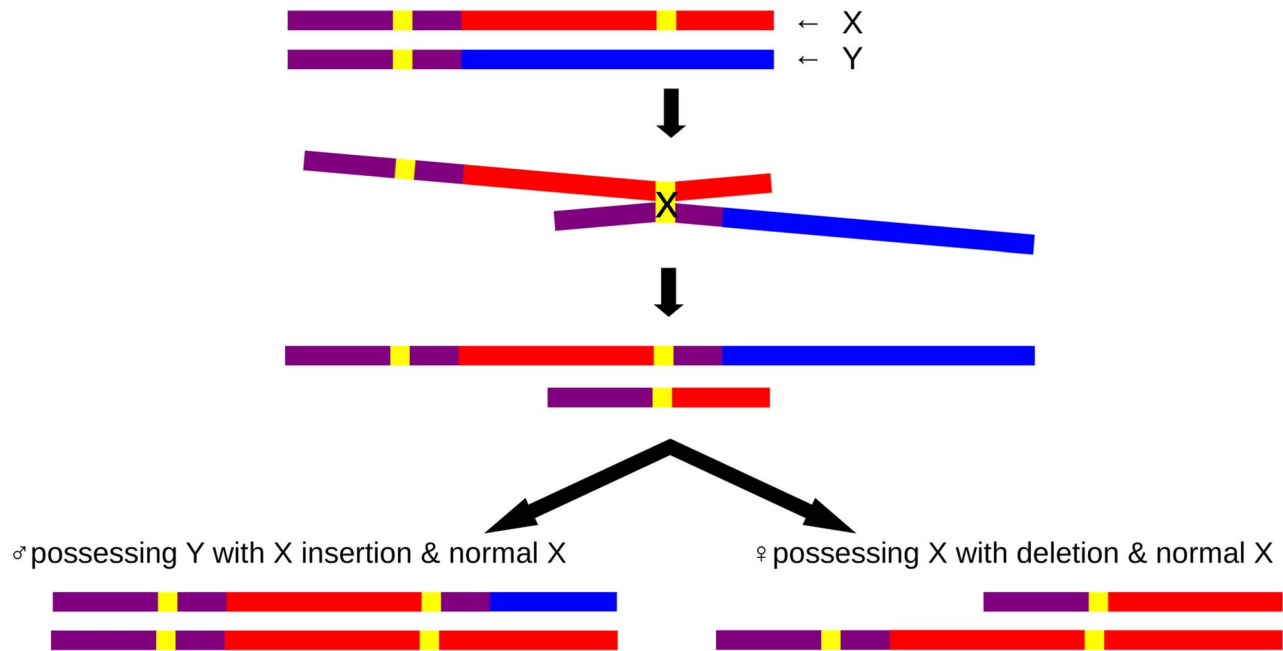


Figure 5. Schematic insertional translocation representation by non-allelic homologous recombination. Purple: PAR1 reference sequence, red: unique X sequence, blue: unique Y sequence; yellow: LTR6B; At the top a paternal set of gonosomes: one normal X and one normal Y chromosome are shown, followed by non-allelic homologous alignment and crossover, resulting in an X chromosome containing a deletion and a Y chromosome containing an X insertion. The bottom illustration demonstrates the situation for male carriers with a Y chromosome containing an X insertion and the reciprocal deletion female carriers with an X chromosome containing a deletion.
doi:10.1371/journal.pgen.1004578.g005

of intellectual disability (ID), autism, dysmorphic features or - in one case - subfertility. All families had a geographic origin in Belgium, except family 4 that originated from France. Phenotypes are described in further detail in Table S1. Duplications were confirmed by FISH using BAC clones as previously described [39]. Probe RP11-457M7 was used to target the pseudoautosomal region and probe RP11-146D5 targeted the X-specific duplication.

Samples were analyzed on CytoSure 105K and 180K Custom Microarrays composed of probes from the CytoSure Syndrome Plus v2 array supplemented with probes from the CytoSure ISCA v2 60K array [40,41]. DNA digestion, labeling, and hybridization were performed according to the manufacturer's protocol.

PCR and Sanger Sequencing

PCR was used to identify the breakpoints. Primers (Table S2) were designed with Primer3 [42,43]. Input sequences were masked for interspersed repeat sequences using the RepeatMasker track [44,45] provided by the UCSC browser [46,47]. Amplification of fragments was performed using the Platinum Taq DNA Polymerase system (Invitrogen), following the manufacturer's protocol. The thermocycler profile used was: 94°C for 30 sec, followed by 25 cycles at 94°C for 30 sec, 60°C for 30 sec, and 72°C for 2:30 min, with a final extension of 72°C for 1 min.

We performed Sanger sequencing of the breakpoint-spanning amplicons on an ABI 3130xl automated capillary DNA sequencer (Applied Biosystems). First, ExoSAP-IT (USB) treatment was performed according to the manufacturer's protocol. A BigDye Terminator v3.1 Cycle Sequencing Kit (Applied Biosystems) was then used as follows: the sequencing reaction was performed using 2 µl template, 1.5 µl sequencing buffer (5X), 4.5 µl distilled water, 0.5 µl Big Dye, 2.5 µl primer (separate reactions for F and R). Reaction conditions were: 3 min at 96°C followed by 25 cycles at

96°C for 10 sec, 5 sec at 50°C, and 4 min at 60°C. Sequencing products were precipitated using 10 µl sequencing product, 10 µl distilled water, 2 µl NaAcEDTA (1.5 M NaAc + 2.5 mM EDTA) and 80 µl ice cold EtOH (100%). Samples were stored for 15 min at room temperature (RT), and then centrifuged for 30 min at 4°C and 3000 rpm. Supernatant was removed. Samples were centrifuged upside-down for 1 min at 4°C and 1800 rpm. 150 µl ice cold 70% EtOH was added and samples were centrifuged for 10 min at 4°C and 1800 rpm. Supernatant was removed and samples were centrifuged upside-down for 1 min at 4°C and 1800 rpm. Samples were kept for 30 min at RT (dust- and light free). 15 µl of High Dye (formamide) were added before spinning and vortexing samples. Samples were stored for 15 min at RT and denatured for 3 min at 96°C. DNA sequences were visualized using ABI sequence scanner v1.0 (Applied Biosystems).

BAC Mediated Targeted Paired-End Sequencing

BAC-mediated targeted paired-end sequencing was used to narrow down the breakpoint region. DNA was captured by a BAC mediated pull-down using an adapted protocol of Bashiardes et al. [48]. BAC clone ChrX-32k-3P23 was labeled with BioPrime DNA Labeling System (Invitrogen) according to the manufacturer's protocol. Genomic DNA was sonicated to a fragment size of approximately 350-650 bp and linkers were added. Separately, 300 ng biotin-labeled BAC mixed with 30 µl Cot-1 DNA, 1% 3M Na-Acetate, and 3000 ng fragmented genomic DNA mixed with 1% 3 M Na-Acetate and in 2.5× abs. EtOH were precipitated at -20°C overnight. Samples were centrifuged for 30 min at 4°C and 3000 rpm. Supernatant was removed. Samples were centrifuged upside-down for 1 min at 4°C and 1800 rpm. 150 µl ice cold 70% EtOH were added and samples were centrifuged for 10 min at 4°C and 1800 rpm. Supernatant was removed and samples were centrifuged upside-down for 1 min at 4°C and

1800 rpm. Pellets were dried at 37°C for a few minutes and resuspended in 25 µl nuclease-free water at 37°C for at least 30 min. Samples were transferred to 0.2 ml tubes and denatured and hybridized in a thermocycler as follows: BAC DNA was denatured for 5 min at 95°C and incubated for 15 min at 65°C. 24 µl of 2× hybridization buffer (1.5 M NaCl, 40 mM Naphosphate buffer pH 7.2, 10 mM EDTA pH8.0, 10× Denhardt's Solution, 0.2% SDS) were added in the cyler and samples were incubated for another hour at 65°C. Genomic DNA was denatured after 40 minutes in another thermocycler for 5 min at 95°C and incubated for 15 min at 65°C. 25 µl of 2× hybridization buffer were added in the cyler. Finally both samples were mixed in the thermocycler by pipetting and hybridized for another 70 h at 65°C. 100 µl magnetic beads (Dynamid M-280 Streptavidin; Invitrogen) were washed twice with 1 ml binding buffer (10 mM Tris-HCl pH 7.5, 1 mM EDTA pH 8.0, 1 M NaCl) and resuspended in 150 µl binding buffer. Hybridization solution was pipetted from cyler to the prepared beads. Tubes were sealed and spun for 30 min upside-down at RT. Beads were pulled down with a magnet, the supernatant removed, and beads were washed once for 15 min in 1 ml 1× SSC, 0.1% SDS on a vibrating table at RT and twice for 15 min in 1 ml 0.1 × SSC 0.1% SDS at 65°C in a vibrating heating block. 50 µl 0.1 M NaOH were added to the beads and they were shook gently for 10 min at RT. Finally the supernatant was pipetted to 1 M Tris-HCL pH 7.5 and the resulting volume of 100 µl was distributed on QIAquick Spin Columns and purified according to the manufacturer's instructions.

Samples were sequenced on a HiSeq 2000 (Illumina) for 2×100 bp reads using the SBS sequencing kit v3 following the manufacturer's protocol. The standard Illumina primary data analysis work-flow was followed for base calling and quality scoring.

Illumina reads were aligned to the human genome (hg19) with BWA v0.5.9 [49] with default settings except that nucleotides with quality score lower than 15 were soft clipped. Read duplicates were discarded after mapping with PICARD MarkDuplicates v1.38 (<http://picard.sourceforge.net>). Local realignment around indels was performed with RealignerTargetCreator and Indel-Realigner from GATK v1.0.4974 [50–52]. Finally base quality scores were recalibrated with CountCovariates and Table Recalibration from GATK. The variant frequency of each position of chromosome X between bases 2,680,000 and 2,830,000 was assessed with SNIFER (E. Souche, personal communication). Reads not mapped in proper pair, reads mapped with a mapping quality lower than 30, and nucleotides with quality lower than 20 were discarded. A call was considered heterozygous if its read depth was of at least 100 and the variant frequency was between 25% and 75%.

Y-chr Haplogroup and Y-STR Typing

In total, 42 Y-STR loci were genotyped for all samples as described in previous studies [53,54]. However, instead of PowerPlex Y the recent developed PowerPlex Y23 System (Promega Corporation, Madison, WI, USA) was used. All 42-Y-STR haplotypes were submitted to Whit Athey's Haplogroup Predictor [55] to obtain probabilities for the inferred haplogroups. Based on these results, the samples were assigned to specific Y-SNP assays according to previously published protocols [53,56] to confirm the main haplogroup and to assign the sub-haplogroup to the most accurate level of the latest published Y-chromosomal tree [57,58].

GenA1Ex version 6.5 [59,60] was used to calculate the differences between all observed haplotypes based on the 42 Y-STR loci. Next,

the median joining haplotype network for all the samples belonging to haplogroup I2a* (I-P37.2*) was constructed based on 26 single-copy Y-STRs by NETWORK version 4.5.1.0 [61] (<http://www.fluxus-engineering.com>) together with all I2 (I-P215) samples already observed in the autochthonous Belgian population by Larmuseau et al. [53,54,56]. The network analysis used the weighting scheme described by Qamar et al. [62] due to different mutation rates among the markers based on Ballantyne et al. [23].

Pacific Biosciences Sequencing and Analyses

Primers (Table S2) were designed with Primer3 to cover chrX:2,718,644-2,723,016 and a combination of chrX:2805180-2809097 plus chrY:2644703-2645415. PacBio specific barcodes with padding sequence were added to the 5' end of the primers. PCRs were performed using the TaKaRa long range PCR kit by ClonTech. Products were checked on agarose gels, individually purified on MinElute columns (Qiagen), quantified with the Quant-iT PicoGreen dsDNA Assay Kit (Life Technologies), and equimolar amounts pooled. This pool was purified on Qiagen MinElute columns, concentrated, and fragmentation checked on a DNA 12000 chip analyzed on a Bioanalyzer 2100 (Agilent). ~2 µg of the pool was prepared for sequencing according to Pacific Biosciences 5 kb protocol using PacBio's DNA Template Prep Kit 2.0 (3 kb-10 kb). The library was first sequenced on a PacBio RS using a DNA/Polymerase Binding Kit 2.0 on a single SMRT cell for a 120 minute movie. The library was sequenced a second time on a PacBio RSII using a DNA/Polymerase Binding Kit P4 on a single SMRT cell for a 180 minute movie. Both runs used PacBio DNA Sequencing Kit 2.0 sequencing reagents. Both SMRTcells were analyzed together using SMRT portal version 2.2's RS_Long_Amplicon_Analysis.1 pipeline with the following non-default settings: minimum sub-read length of 4000, demultiplexing with paired barcodes, and higher stringency on the barcode filtering (30). The assembled amplicon contigs were evaluated by command line BLAST [63] against targeted sequences flanked by 100 N's. Contigs were selected with alignment lengths near to the full target length and a minimum coverage of 30. These contigs were visualized and aligned with ClustalX 2.1 [64] to call variants, ignoring Poly-N length variants of ≥5 nucleotides.

Supporting Information

Figure S1 Primer design for Y PAR1 extension. Illustrated is a reference X chromosome (A), reference Y chromosome (B), and hypothetical archaic Y chromosome (C). These chromosomes are color coded as: PAR1 sequence in purple, unique X sequence in red, and unique Y sequence in blue. Primers are illustrated as green arrows, with a connecting lighter green box when a PCR product is possible. PCR products (D) are shown for patients (P), male controls (mc), female controls (fc), and a negative control (neg). (PDF)

Figure S2 The main backbone of the latest published Y chromosomal phylogenetic tree [58]. The nomenclature of all main haplogroups is based on the terminal mutation that defined them. The arrows reveal the haplogroups of Y chromosomes in which extended PAR-regions were observed. (TIF)

Table S1 Clinical phenotypes. (PDF)

Table S2 Primers used in the study. (PDF)

Acknowledgments

We thank G. Peeters for help with the PCR, sequencing, and HiSeq library preparation and A. Van Geystelen for help with the phylogenetic analysis.

References

- Bachrog D (2013) Y-chromosome evolution: emerging insights into processes of Y-chromosome degeneration. *Nat Rev Genet* 14: 113–124.
- Otto SP, Pannell JR, Peichel CL, Ashman TL, Charlesworth D, et al. (2011) About PAR: the distinct evolutionary dynamics of the pseudoautosomal region. *Trends Genet* 27: 358–367.
- Lahn BT, Page DC (1999) Four evolutionary strata on the human X chromosome. *Science* 286: 964–967.
- Pandey RS, Wilson Sayres MA, Azad RK (2013) Detecting evolutionary strata on the human X chromosome in the absence of gametologous Y-linked sequences. *Genome Biol Evol* 5: 1863–1871.
- Marais G, Galtier N (2003) Sex chromosomes: how X-Y recombination stops. *Curr Biol* 13: R641–643.
- Katsura Y, Iwase M, Satta Y (2012) Evolution of genomic structures on Mammalian sex chromosomes. *Curr Genomics* 13: 115–123.
- Aitken RJ, Marshall Graves JA (2002) The future of sex. *Nature* 415: 963.
- Marshall Graves JA (2006) Sex chromosome specialization and degeneration in mammals. *Cell* 124: 901–914.
- Hughes JF, Skaletsky H, Brown LG, Pyntikova T, Graves T, et al. (2012) Strict evolutionary conservation followed rapid gene loss on human and rhesus Y chromosomes. *Nature* 483: 82–86.
- Waters PD, Duffy B, Frost CJ, Delbridge ML, Graves JAM (2001) The human Y chromosome derives largely from a single autosomal region added to the sex chromosomes 80–130 million years ago. *Cytogenet Cell Genet* 92: 74–79.
- Vermeech JR, Petit P, Kermouni A, Renaud JC, Van Den Bergh E, et al. (1997) The IL-9 receptor gene, located in the Xq/Yq pseudoautosomal region, has an autosomal origin, escapes X inactivation and is expressed from the Y. *Hum Mol Genet* 6: 1–8.
- Charchar FJ, Svartman M, El-Mogharbel N, Ventura M, Kirby P, et al. (2003) Complex events in the evolution of the human pseudoautosomal region 2 (PAR2). *Genome Res* 13: 281–286.
- Flaquer A, Rappold GA, Wienker TF, Fischer C (2008) The human pseudoautosomal regions: a review for genetic epidemiologists. *Eur J Hum Genet* 16: 771–779.
- Filatov DA, Gerrard DT (2003) High mutation rates in human and ape pseudoautosomal genes. *Gene* 317: 67–77.
- Bussell JJ, Pearson NM, Kanda R, Filatov DA, Lahn BT (2006) Human polymorphism and human-chimpanzee divergence in pseudoautosomal region correlate with local recombination rate. *Gene* 368: 94–100.
- Schiebel K, Meder J, Rump A, Rosenthal A, Winkelmann M, et al. (2000) Elevated DNA sequence diversity in the genomic region of the phosphatase PPP2R3L gene in the human pseudoautosomal region. *Cytogenet Cell Genet* 91: 224–230.
- Jorgez CJ, Weedon JW, Sahin A, Tannour-Louet M, Han S, et al. (2011) Aberrations in pseudoautosomal regions (PARs) found in infertile men with Y-chromosome microdeletions. *J Clin Endocrinol Metab* 96: E674–679.
- Ellis NA, Ye TZ, Patton S, German J, Goodfellow PN, et al. (1994) Cloning of PBDX, an MIC2-related gene that spans the pseudoautosomal boundary on chromosome Xp. *Nat Genet* 6: 394–400.
- Ellis NA, Tippet P, Petty A, Reid M, Weller PA, et al. (1994) PBDX is the XG blood group gene. *Nat Genet* 8: 285–290.
- Glaser B, Myrtek D, Rumpel Y, Schiebel K, Hauwy M, et al. (1999) Transposition of SRY into the ancestral pseudoautosomal region creates a new pseudoautosomal boundary in a progenitor of simian primates. *Hum Mol Genet* 8: 2071–2078.
- Van Laere AS, Coppieters W, Georges M (2008) Characterization of the bovine pseudoautosomal boundary: Documenting the evolutionary history of mammalian sex chromosomes. *Genome Res* 18: 1884–1895.
- Ellis N, Yen P, Neiswanger K, Shapiro LJ, Goodfellow PN (1990) Evolution of the pseudoautosomal boundary in Old World monkeys and great apes. *Cell* 63: 977–986.
- Ballantyne KN, Goedbloed M, Fang R, Schaap O, Lao O, et al. (2010) Mutability of Y-chromosomal microsatellites: rates, characteristics, molecular bases, and forensic implications. *Am J Hum Genet* 87: 341–353.
- Walsh B (2001) Estimating the time to the most recent common ancestor for the Y chromosome or mitochondrial DNA for a pair of individuals. *Genetics* 158: 897–912.
- Mang AH, Morris BJ (2007) The Human Pseudoautosomal Region (PAR): Origin, Function and Future. *Curr Genomics* 8: 129–136.
- Durkin K, Coppieters W, Drogemuller C, Ahariz N, Cambisano N, et al. (2012) Serial translocation by means of circular intermediates underlies colour sidedness in cattle. *Nature* 482: 81–84.
- Ou Z, Stankiewicz P, Xia Z, Breman AM, Dawson B, et al. (2011) Observation and prediction of recurrent human translocations mediated by NAHR between nonhomologous chromosomes. *Genome Res* 21: 33–46.

Author Contributions

Conceived and designed the experiments: MAM MSH JRV. Performed the experiments: MAM NV MD RS. Analyzed the data: MAM MSH MHDL ELS JVH TV RD PNR. Wrote the paper: MAM MSH MHDL PNR JRV. Collected patient material and/or phenotypes: MI HVE KD.

- Liu P, Lacia M, Zhang F, Withers M, Hastings PJ, et al. (2011) Frequency of nonallelic homologous recombination is correlated with length of homology: evidence that ectopic synapsis precedes ectopic crossing-over. *Am J Hum Genet* 89: 580–588.
- Liu P, Carvalho CM, Hastings PJ, Lupski JR (2012) Mechanisms for recurrent and complex human genomic rearrangements. *Curr Opin Genet Dev* 22: 211–220.
- Shaw CJ, Lupski JR (2005) Non-recurrent 17p11.2 deletions are generated by homologous and non-homologous mechanisms. *Hum Genet* 116: 1–7.
- Luo Y, Hermetz KE, Jackson JM, Mülle JG, Dodd A, et al. (2011) Diverse mutational mechanisms cause pathogenic subtelomeric rearrangements. *Hum Mol Genet* 20: 3769–3778.
- White MA, Ikeda A, Payseur BA (2012) A pronounced evolutionary shift of the pseudoautosomal region boundary in house mice. *Mamm Genome* 23: 454–466.
- Koumbaris G, Hatzisevastou-Loukidou H, Alexandrou A, Ioannides M, Christodoulou C, et al. (2011) FoSteS, MMBIR and NAHR at the human proximal Xp region and the mechanisms of human Xq isochromosome formation. *Hum Mol Genet* 20: 1925–1936.
- Higashimoto K, Maeda T, Okada J, Ohtsuka Y, Sasaki K, et al. (2013) Homozygous deletion of DIS3L2 exon 9 due to non-allelic homologous recombination between LINE-1s in a Japanese patient with Perlman syndrome. *Eur J Hum Genet* 21: 1316–1319.
- Johnson NC (2011) XG: the forgotten blood group system. *Immunohematology* 27: 68–71.
- Mu J, Skurat AV, Roach PJ (1997) Glycogenin-2, a novel self-glucosylating protein involved in liver glycogen biosynthesis. *J Biol Chem* 272: 27589–27597.
- Mu J, Roach PJ (1998) Characterization of human glycogenin-2, a self-glucosylating initiator of liver glycogen metabolism. *J Biol Chem* 273: 34850–34856.
- Marshall Graves JA (2002) The rise and fall of SRY. *Trends Genet* 18: 259–264.
- Vermeech JR, Mertens G, David G, Marynen P (1995) Assignment of the human glycophan gene (GPC1) to 2q35-q37 by fluorescence in situ hybridization. *Genomics* 25: 327–329.
- Srisupundit K, Brady PD, Devriendt K, Fryns JP, Cruz-Martinez R, et al. (2010) Targeted array comparative genomic hybridization (array CGH) identifies genomic imbalances associated with isolated congenital diaphragmatic hernia (CDH). *Prenat Diagn* 30: 1198–1206.
- Vermeech JR, Melotte C, Froyen G, Van Vooren S, Dutta B, et al. (2005) Molecular karyotyping: array CGH quality criteria for constitutional genetic diagnosis. *J Histochem Cytochem* 53: 413–422.
- Untergasser A, Cutcutache I, Koressaar T, Ye J, Faircloth BC, et al. (2012) Primer3—new capabilities and interfaces. *Nucleic Acids Res* 40: e115.
- Koressaar T, Remm M (2007) Enhancements and modifications of primer design program Primer3. *Bioinformatics* 23: 1289–1291.
- Jurka J (2000) Repbase update: a database and an electronic journal of repetitive elements. *Trends Genet* 16: 418–420.
- Smit AFA, Hubley R, Green P (1996–2010). RepeatMasker Open-3.0. URL <http://www.repeatmasker.org>.
- Kent WJ, Sugnet CW, Furey TS, Roskin KM, Pringle TH, et al. (2002) The human genome browser at UCSC. *Genome Res* 12: 996–1006.
- Karolchik D, Barber GP, Casper J, Clawson H, Cline MS, et al. (2014) The UCSC Genome Browser database: 2014 update. *Nucleic Acids Res* 42: D764–770.
- Bashiardes S, Veile R, Helms C, Mardis ER, Bowcock AM, et al. (2005) Direct genomic selection. *Nat Methods* 2: 63–69.
- Li H, Durbin R (2009) Fast and accurate short read alignment with Burrows-Wheeler transform. *Bioinformatics* 25: 1754–1760.
- McKenna A, Hanna M, Banks E, Sivachenko A, Cibulskis K, et al. (2010) The Genome Analysis Toolkit: a MapReduce framework for analyzing next-generation DNA sequencing data. *Genome Res* 20: 1297–1303.
- DePristo MA, Banks E, Poplin R, Garimella KV, Maguire JR, et al. (2011) A framework for variation discovery and genotyping using next-generation DNA sequencing data. *Nat Genet* 43: 491–498.
- Van der Auwera GA, Carneiro M, Hartl C, Poplin R, del Angel G, et al. (2013) From FastQ Data to High-Confidence Variant Calls: The Genome Analysis Toolkit Best Practices Pipeline. *Curr Protoc Bioinformatics* 43: 11.10.1–11.10.33.
- Larmuseau MH, Vanderheyden N, Jacobs M, Coomans M, Larno L, et al. (2011) Micro-geographic distribution of Y-chromosomal variation in the central-western European region Brabant. *Forensic Sci Int Genet* 5: 95–99.
- Larmuseau MH, Vanoverbeke J, Gielis G, Vanderheyden N, Larmuseau HF, et al. (2012) In the name of the migrant father—analysis of surname origins identifies genetic admixture events undetectable from genealogical records. *Heredity (Edinb)* 109: 90–95.

55. Athey WT (2006) Haplogroup prediction from Y-STR values using a Bayesian-allele-frequency approach. *Journal of Genetic Genealogy* 2: 34–39.
56. Larmuseau MH, Ottoni C, Raeymaekers JA, Vanderheyden N, Larmuseau HF, et al. (2012) Temporal differentiation across a West-European Y-chromosomal cline: genealogy as a tool in human population genetics. *Eur J Hum Genet* 20: 434–440.
57. Van Geystelen A, Decorte R, Larmuseau MH (2013) AMY-tree: an algorithm to use whole genome SNP calling for Y chromosomal phylogenetic applications. *BMC Genomics* 14: 101.
58. Van Geystelen A, Decorte R, Larmuseau MH (2013) Updating the Y-chromosomal phylogenetic tree for forensic applications based on whole genome SNPs. *Forensic Sci Int Genet* 7: 573–580.
59. Peakall R, Smouse PE (2006) GENALEX 6: genetic analysis in Excel. Population genetic software for teaching and research. *Molecular Ecology Notes* 6: 288–295.
60. Peakall R, Smouse PE (2012) GenAlix 6.5: genetic analysis in Excel. Population genetic software for teaching and research—an update. *Bioinformatics* 28: 2537–2539.
61. Bandelt HJ, Forster P, Rohl A (1999) Median-joining networks for inferring intraspecific phylogenies. *Mol Biol Evol* 16: 37–48.
62. Qamar R, Ayub Q, Mohyuddin A, Helgason A, Mazhar K, et al. (2002) Y-chromosomal DNA variation in Pakistan. *Am J Hum Genet* 70: 1107–1124.
63. Altschul SF, Gish W, Miller W, Myers EW, Lipman DJ (1990) Basic local alignment search tool. *J Mol Biol* 215: 403–410.
64. Larkin MA, Blackshields G, Brown NP, Chenna R, McGettigan PA, et al. (2007) Clustal W and Clustal X version 2.0. *Bioinformatics* 23: 2947–2948.

4.2 Druckexemplar der Korrektur der ausgewählten Publikation



Correction

Correction: Pseudoautosomal Region 1 Length Polymorphism in the Human Population

The *PLOS Genetics* Staff

Two errors are included in the published manuscript.

In the abstract the sentence “Subsequent genomic analysis demonstrated that an insertional translocation of X chromosomal sequence into the Y chromosome generates an extended PAR.” Should read “Subsequent genomic analysis demonstrated that an insertional translocation of X chromosomal sequence into the Y chromosome generates an extended PAR.”

In the last paragraph of materials and methods, the sentence “~2 µg of the pool was prepared for sequencing according to Pacific Biosciences 5 kb protocol using PacBio’s DNA Template Prep Kit 2.0 (3 kb-10 kb)” should instead have the value ~4 µg.

Reference

1. Mensah MA, Hestand MS, Larmuseau MHD, Isrie M, Vanderheyden N, et al. (2014) Pseudoautosomal Region 1 Length Polymorphism in the Human Population. *PLoS Genet* 10(11): e1004578. doi:10.1371/journal.pgen.1004578

Citation: The *PLOS Genetics* Staff (2014) Correction: Pseudoautosomal Region 1 Length Polymorphism in the Human Population. *PLoS Genet* 10(12): e1004889. doi:10.1371/journal.pgen.1004889

Published: December 3, 2014

Copyright: © 2014 The *PLOS Genetics* Staff. This is an open-access article distributed under the terms of the Creative Commons Attribution License, which permits unrestricted use, distribution, and reproduction in any medium, provided the original author and source are credited.

5. Lebenslauf

Mein Lebenslauf wird aus datenschutzrechtlichen Gründen in der elektronischen Version meiner Arbeit nicht veröffentlicht.

6. Komplette Publikationsliste

Mensah MA, Hestand MS, Larmuseau MHD, Isrie M, Vanderheyden N, et al. (2014)
Pseudoautosomal Region 1 Length Polymorphism in the Human Population. *PloS Genet* 10(11):
e1004578. doi: 10.1371/journal.pgen.1004578

7. Danksagung

Ich danke Prof. Peter Nick Robinson für die hervorragende Betreuung dieser Arbeit und die Vermittlung an die Arbeitsgruppe von Prof. Vermeesch nach Leuven.

Ich danke besonders Prof. Joris R. Vermeesch für die Überlassung des Themas und die großartige Betreuung am Zentrum für Humangenetik der KU Leuven.

Meinen Co-Autoren danke ich für ihre gehaltvollen Beiträge, ihren stetigen Fleiß und ihren Rat, ohne sie wäre diese Arbeit nicht möglich gewesen.

Den Mitarbeitern des Zentrums für Humangenetik der KU Leuven und ganz besonders Greet Peters danke ich für ihre Hilfe und ihren Rat, die sie mir gewährten, wann immer ich sie brauchte.

Meinen Eltern, meiner Frau Hannah und meinen Brüdern, Georg und Ludwig, danke ich, dass sie immer an mich geglaubt haben.

Dem Evangelischen Studienwerk Villigst e.V. gilt mein Dank für seine finanzielle Unterstützung, die mir die Freiheit gab, mich ganz auf diese Arbeit zu konzentrieren.