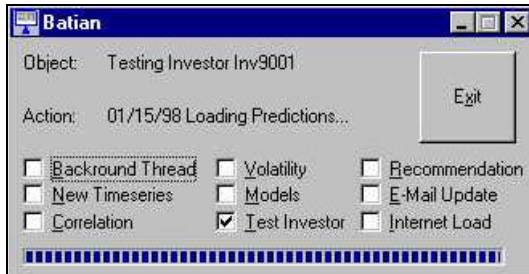
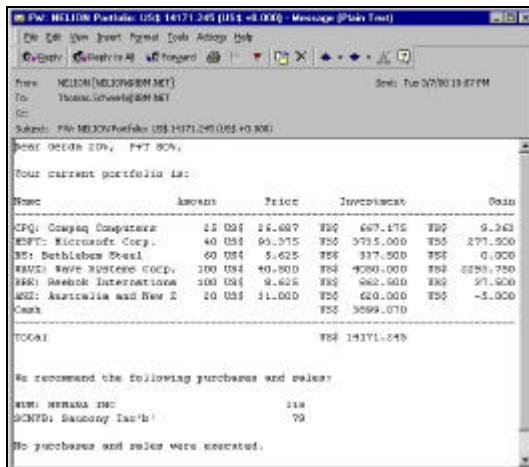


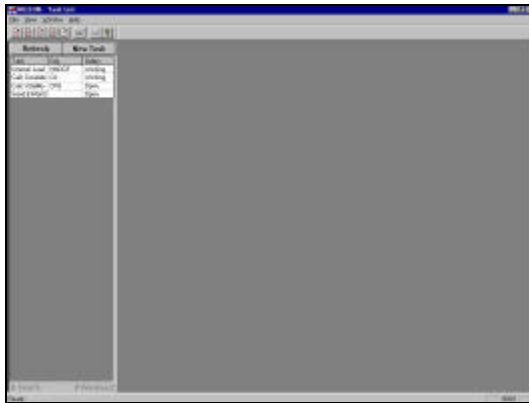
## 10 Appendix C: Screen Shots



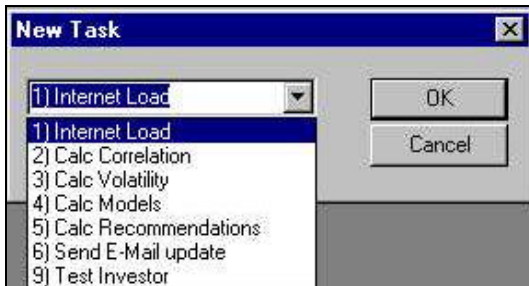
The Task Agent



An E-Mail Recommendation



**The Administration Tool**



**The "New Task" Dialog**

Name	Value (US\$)	Interval
Bocsa 203, P4	14749.77	Weekly
Petra	1040.02	Weekly
Road (Risky)	15341.61	Weekly
Road (Conserva	10632.93	Weekly

Buttons: Open, New, Delete, Cancel

The Investor List

General Investor Information Form

Investor # [ ] Total Portfolio (US\$) [ ] Use It [ ] OK [ ] Cancel [ ] Refresh

Investor Name [ ]

Investment Interval [ 2 Weekly ] [ 2 Jane Investor ]

Initial [ ]

Initial Interval [ 2 Weekly ]

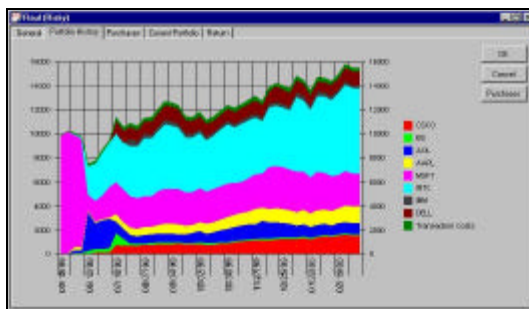
Transaction Cost (US\$) [ 1.000 ] Volume Weighting [ ] Yes [ ] No

Max. Transaction (US\$) [ 100.000 ] Execution Weighting [ 1.000 ]

Test Date [ 21/10/06 ] Exit Weighting [ 1.000 ]

Test End [ 21/10/06 ] Volume Weighting [ 1.000 ]

General Investor Information



The Graphical Portfolio History

Date	Price (\$/SH)	Shares	Value (\$/SH)
10/11/98	7.00	50	350.00
10/19/98	120.20	1	120.20
10/23/98	43.00	2	86.00
10/25/98	71.90	-4	-287.60
10/25/98	40.94	6	245.64
10/25/98	120.44	-2	-240.88
10/25/98	5.00	10	50.00
10/26/98	8.50	-2	-17.00
10/26/98	11.20	1	11.20
10/25/98	54.44	43	2340.72
10/12/98	70.15	100	7015.00
10/12/98	40.44	-2	-80.88
10/13/98	59.00	60	3540.00
10/13/98	1.75	30	52.50
10/13/98	10.30	12	123.60
10/13/98	30.00	6	180.00
10/19/98	112.00	-17	-1904.00
10/19/98	112.00	1	112.00
10/19/98	30.19	6	181.14
10/19/98	112.00	-2	-224.00
10/19/98	40.20	34	1366.80
10/19/98	30.19	4	120.76
10/19/98	30.19	4	120.76
10/19/98	30.19	6	181.14

### The Investor Transactions

Date	Price (\$/SH)	Shares	Value (2018) (\$/SH)	Value (2019) (\$/SH)
10/11/98	7.00	50	1120.00	30.00
10/19/98	120.20	1	2001.00	43.00
10/23/98	43.00	2	700.00	217.00
10/25/98	71.90	-4	-287.60	-386.00
10/25/98	40.94	6	1362.50	604.00
10/25/98	120.44	-2	-240.88	-117.00
10/25/98	5.00	10	50.00	85.00
10/26/98	8.50	-2	-17.00	-37.00
10/26/98	11.20	1	112.00	123.00
10/25/98	54.44	43	1833.00	675.00
10/12/98	70.15	100	1120.00	112.00
10/12/98	40.44	-2	-80.88	-80.88
10/13/98	59.00	60	3540.00	3540.00
10/13/98	1.75	30	52.50	52.50
10/13/98	10.30	12	123.60	123.60
10/13/98	30.00	6	180.00	180.00
10/19/98	112.00	-17	-1904.00	-1904.00
10/19/98	112.00	1	112.00	112.00
10/19/98	30.19	6	181.14	181.14
10/19/98	112.00	-2	-224.00	-224.00
10/19/98	40.20	34	1366.80	1366.80
10/19/98	30.19	4	120.76	120.76
10/19/98	30.19	4	120.76	120.76
10/19/98	30.19	6	181.14	181.14

### The Current Investor Portfolio

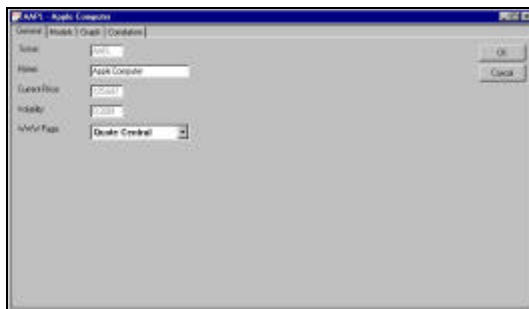
Shares	Value (2018)	Value (2019)
10/11/98	1120.00	30.00
10/19/98	2001.00	43.00
10/23/98	700.00	217.00
10/25/98	-287.60	-386.00
10/25/98	1362.50	604.00
10/25/98	-240.88	-117.00
10/25/98	50.00	85.00
10/26/98	-17.00	-37.00
10/26/98	112.00	123.00
10/25/98	1833.00	675.00
10/12/98	1120.00	112.00
10/12/98	-80.88	-80.88
10/13/98	3540.00	3540.00
10/13/98	52.50	52.50
10/13/98	123.60	123.60
10/13/98	180.00	180.00
10/19/98	-1904.00	-1904.00
10/19/98	112.00	112.00
10/19/98	181.14	181.14
10/19/98	-224.00	-224.00
10/19/98	1366.80	1366.80
10/19/98	120.76	120.76
10/19/98	120.76	120.76
10/19/98	181.14	181.14

### The Return on Investment



Ticker	Name	Price (US\$)
AAPL	Apple Computer	125.69
ABF	Airborne Freight Cor	18.69
ACEC	ACE*COMM Corpor.	18.00
ACR	American Retiremer	8.06
ACRT	Actrade Internation	14.31
ADCT	ADC Telecommunic	49.00
ADM	Archer Daniels Midk	9.88
ADSK	Autodesk	47.06
AEIC	Air Express Internati	32.88
AGR	Argentaria, Caja Pos	43.19
AHP	American Home Pro	46.88
AIB	Allied Irish Banks, p.	16.31
AIRT	Air Transportation H	3.38

**The Stock List**



General Stock Information for AAPL (Apple Computer)

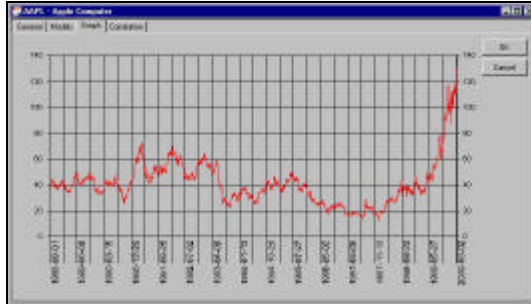
Name: Apple Computer

Symbol: AAPL

Industry: Technology

Market Cap: Double Central

**General Stock Information**



The Graph of the Stock Price

Stock	Correlation
APPL Apple Computer	1.0000
APAC APACMED International Ltd	0.8874
ABF Abbot Inc Boston J.C.	0.8759
CDW CDW Holdings Inc	0.8756
B-GRV Biogen Idec PLC	0.8520
WDC World Wide Web	0.8288
WPT World Wide Web	0.8170
CTO Citic	0.8079
KOP Knowledge Corp Production	0.8088
ASFC Applied Micro Devices	0.8074
LS Lucent Technology	0.8039
WDM World Wide Web	0.8044
TRIC Tech Data Corp	0.8008
AMP AMP Network Services Corp	0.8493
D-HP Chesapeake Cellular Tech	0.8271
MRU Medtronic Inc	0.7703
PRG Parallax	0.7703
MAN Manpower	0.7755
ATV AT&T Intellectual Property	0.7590
D-RVA Citic Resources Worldwide	0.7280
TTT TAT Post Group M.C.	0.7096
WV Research Pathway Systems	0.6571
WVY Verity Inc	0.6557

The Correlation between Stocks