

Appendix-G: Industry 2D-seismic data

In the following paragraph are shown the interpretation of the digital 2D-seismic (Appendix G.1). The interpretation was done with Geoframe at the GeoForschungsZentrum Potsdam with the help of Tina Lohr, Charlotte Krawzyk, and David Tanner. The locations of the sections are shown beneath. The computed isopach maps are also listed in time (Appendix G.2).

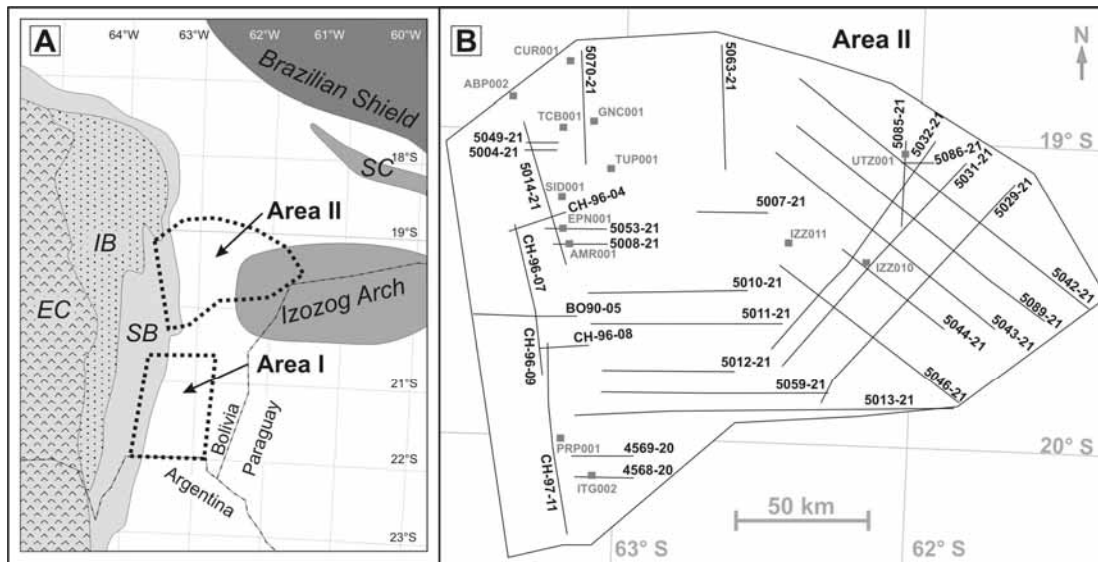


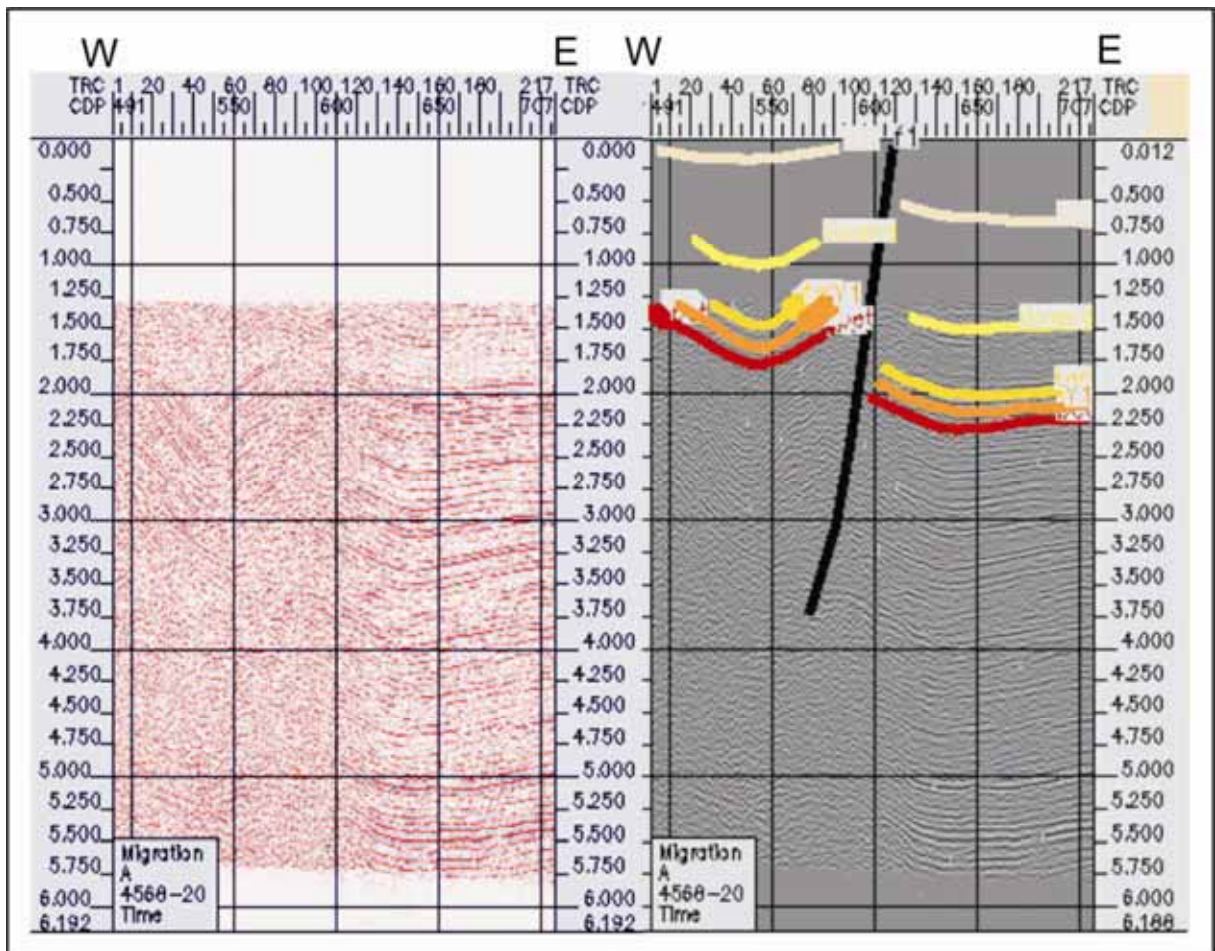
Fig. G1: Basemap of the study area, showing the setting of Area I and Area II (A) and the location of the 29 seismic sections and 13 well logs in Area II (B).

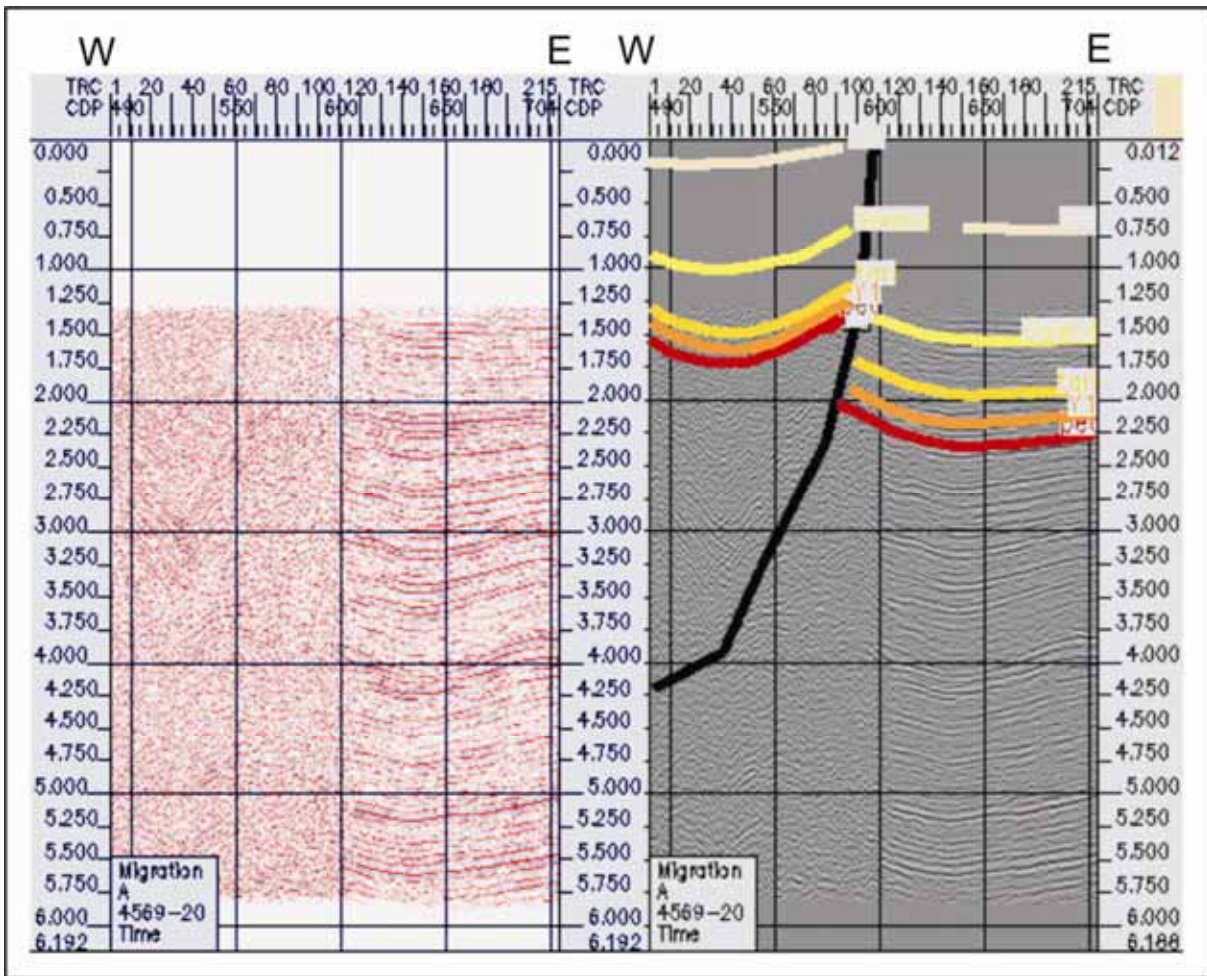
Appendix-G1: 2D-seismic analysis of Area II

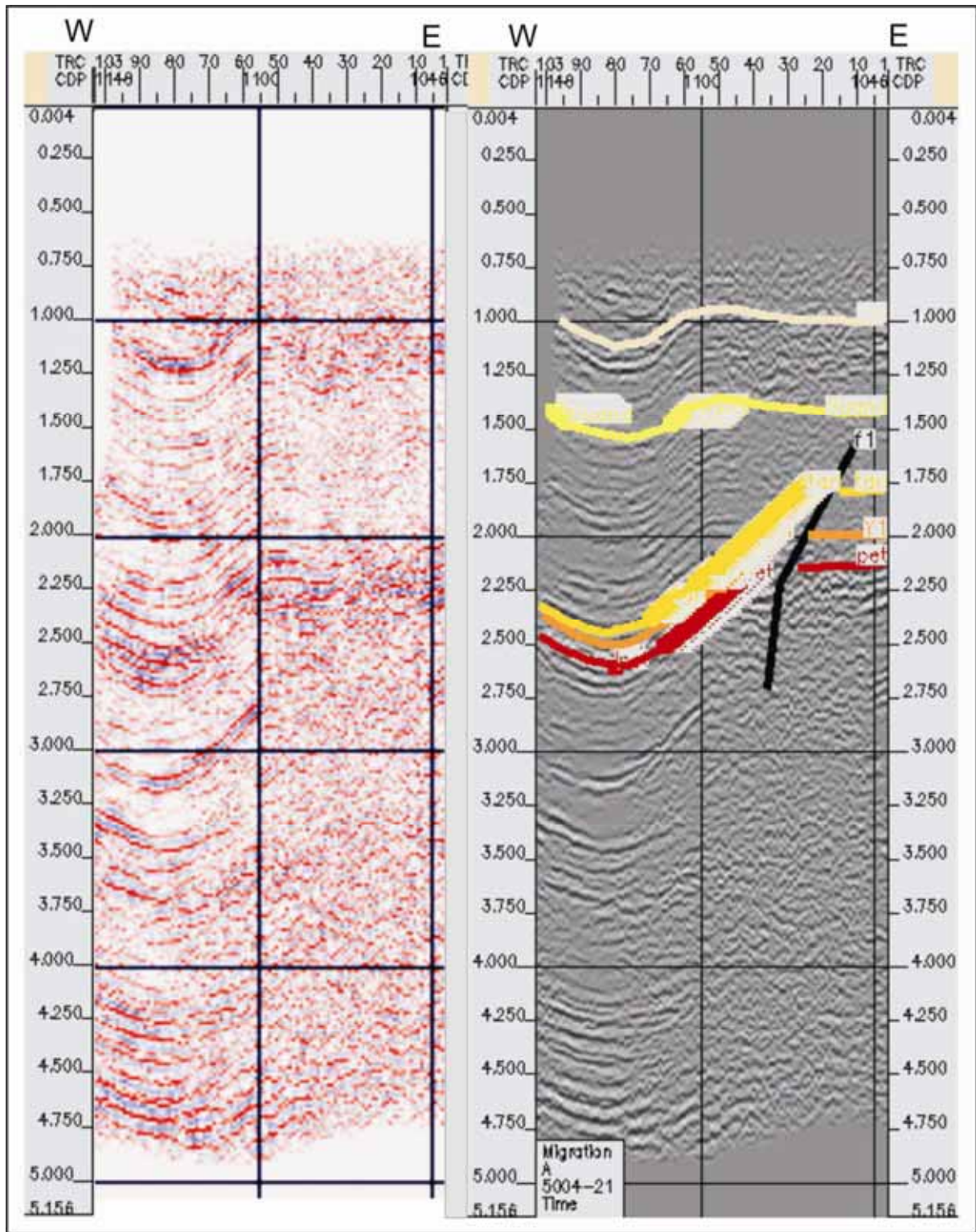
The 2D-seismic lines show an the shotpoints (x-axis) and the two-way-travel time in seconds (y-axis).

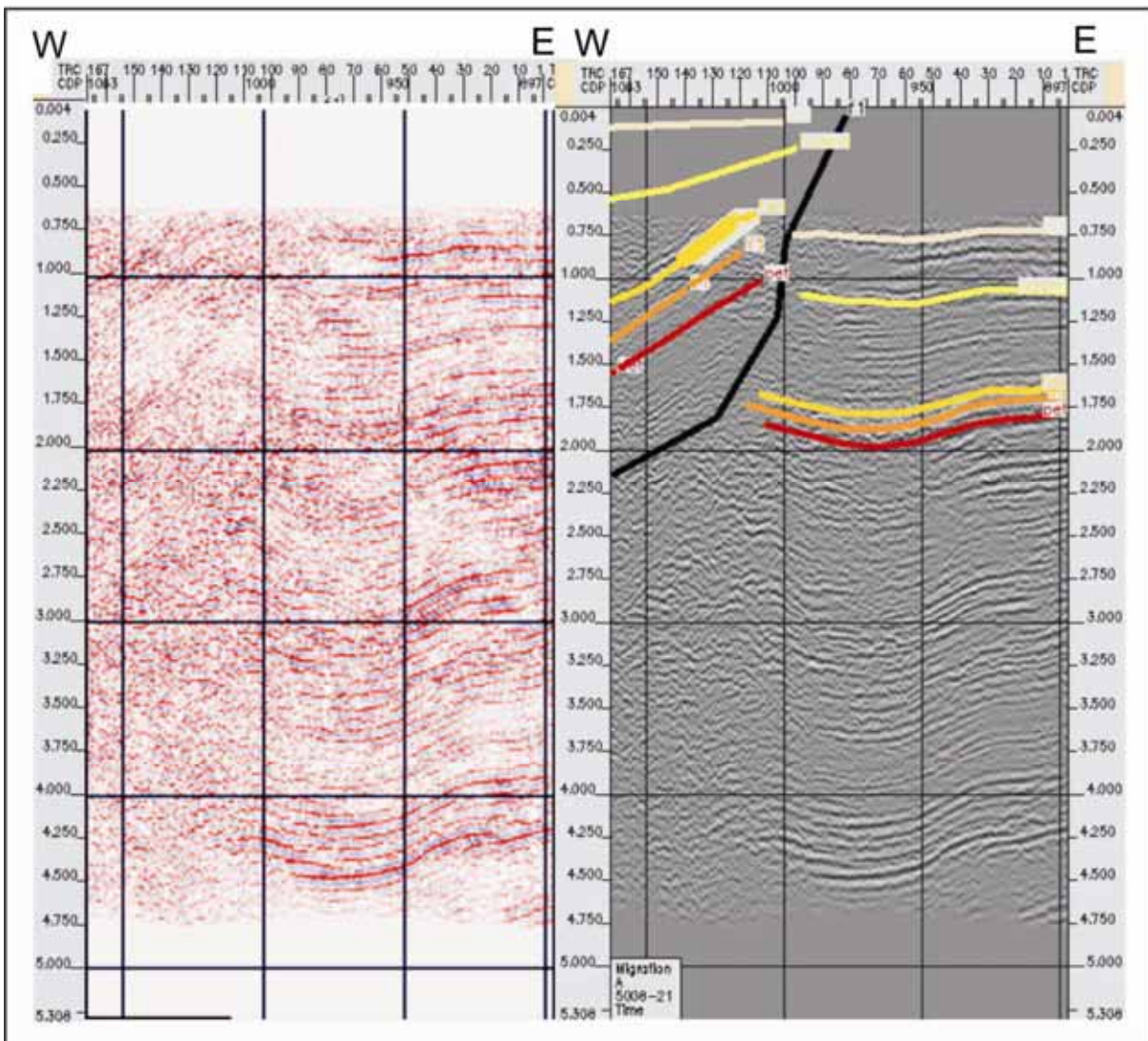
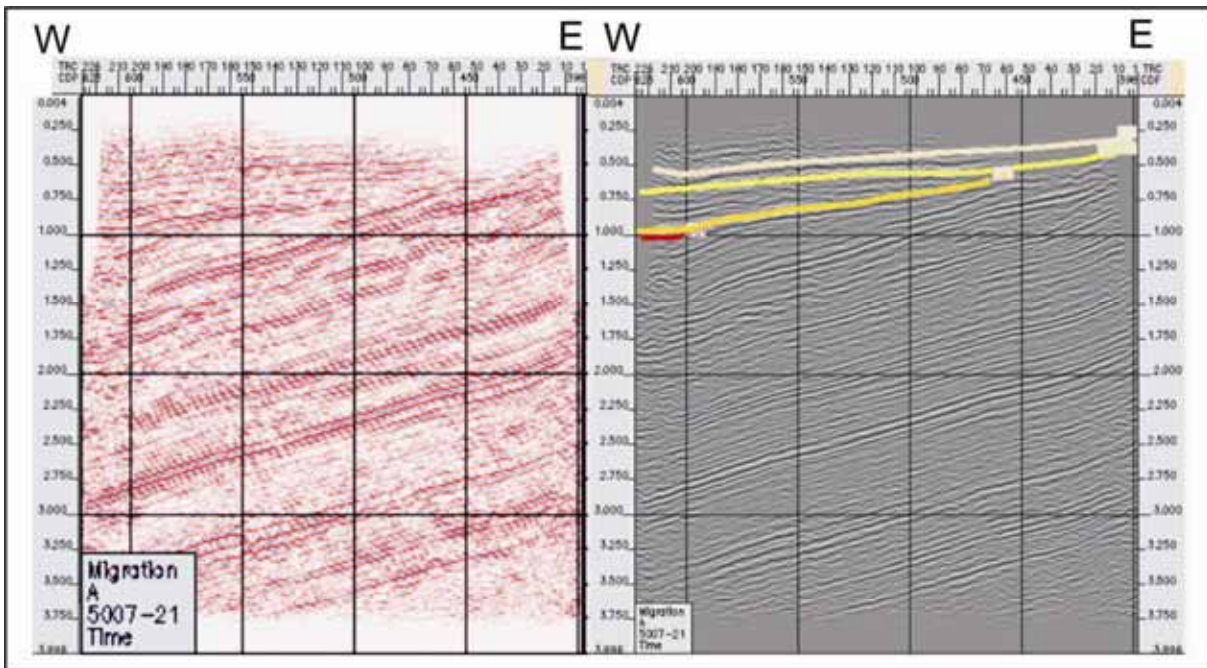
The lines represent:

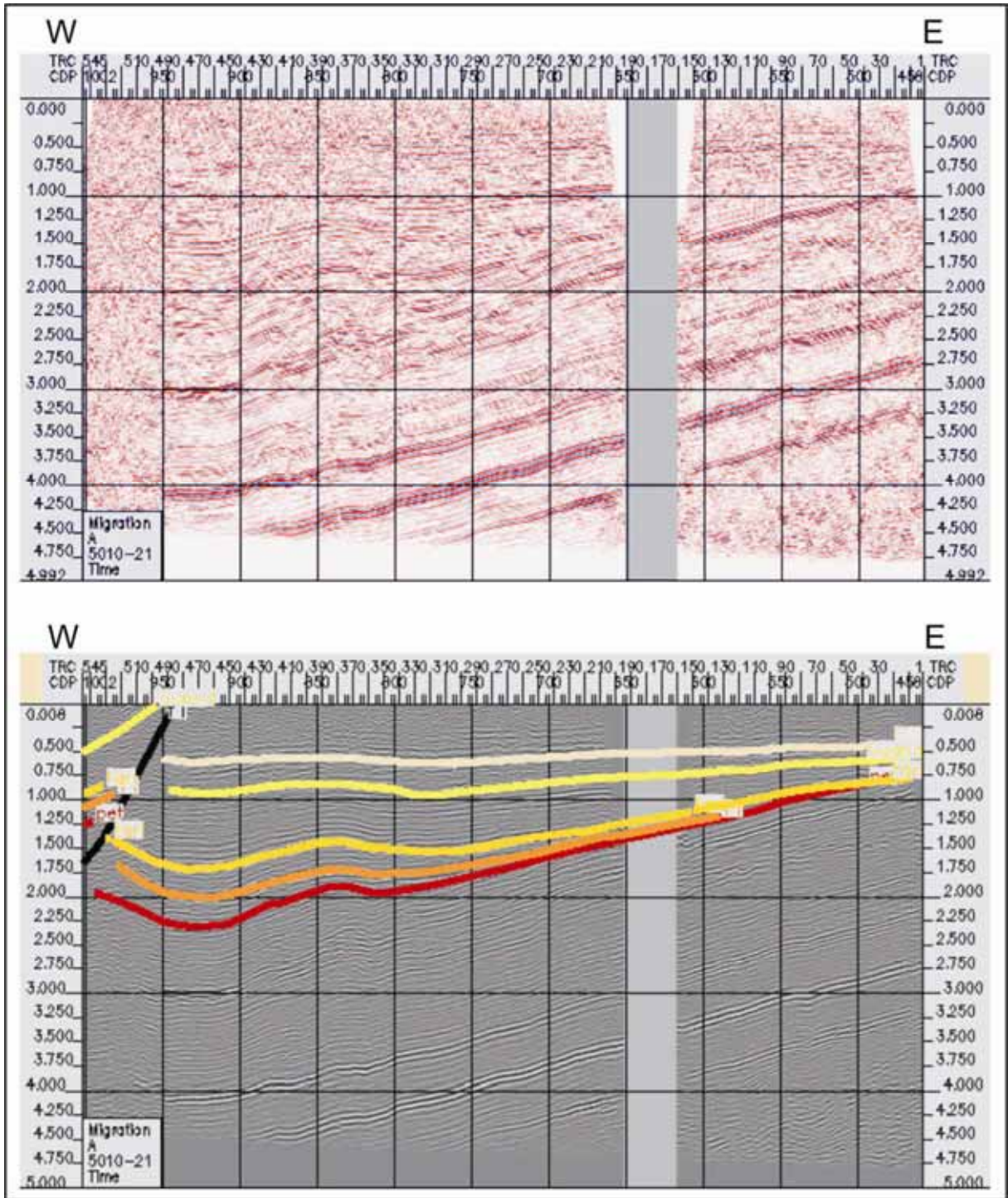
- white line: Emborozú Formation
- yellow line: Guandacay Formation
- dark yellow line: Tariquia Formation
- orange line: Yecua Formation
- red line: Petaca Formation
- black line: fault

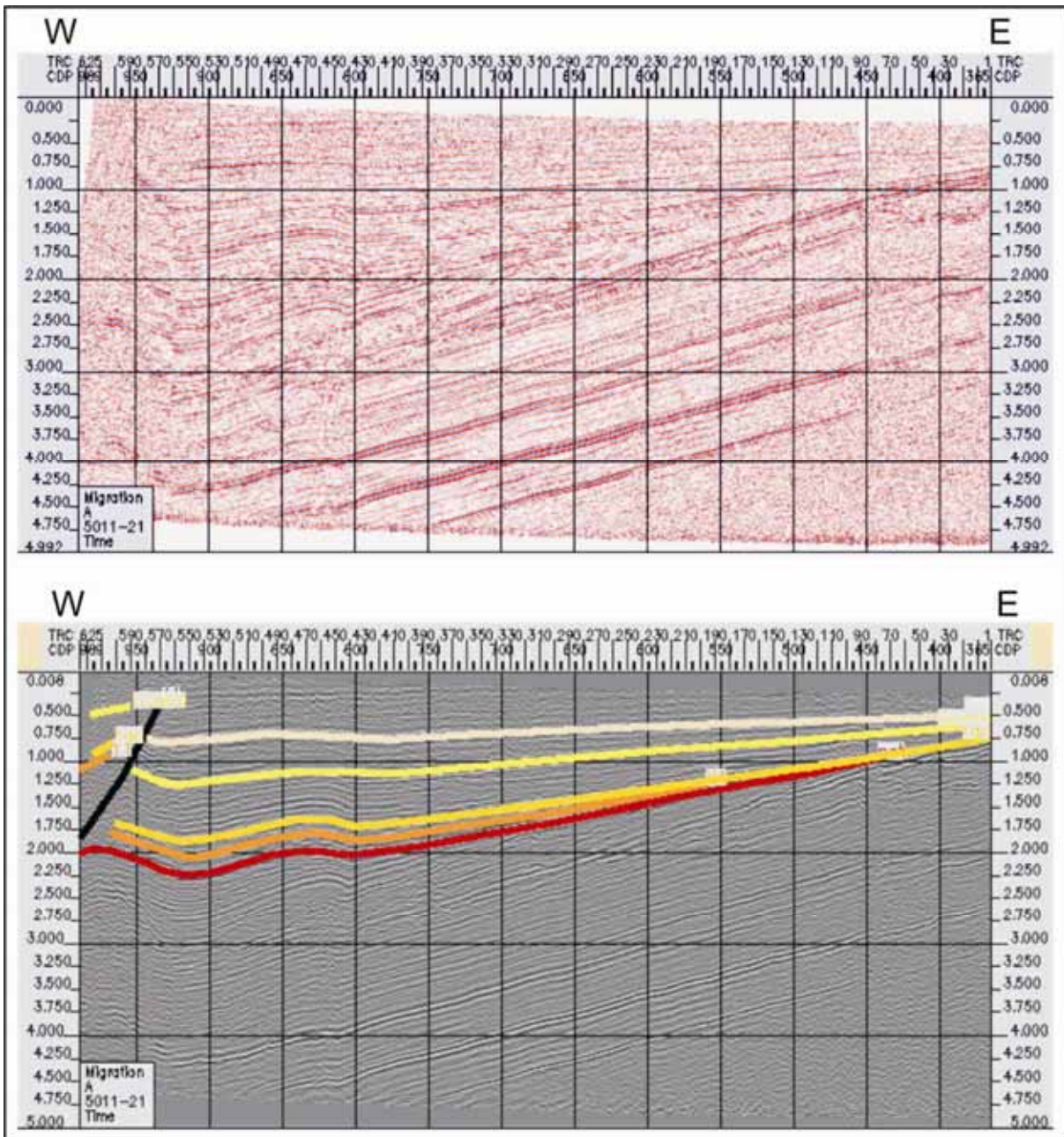


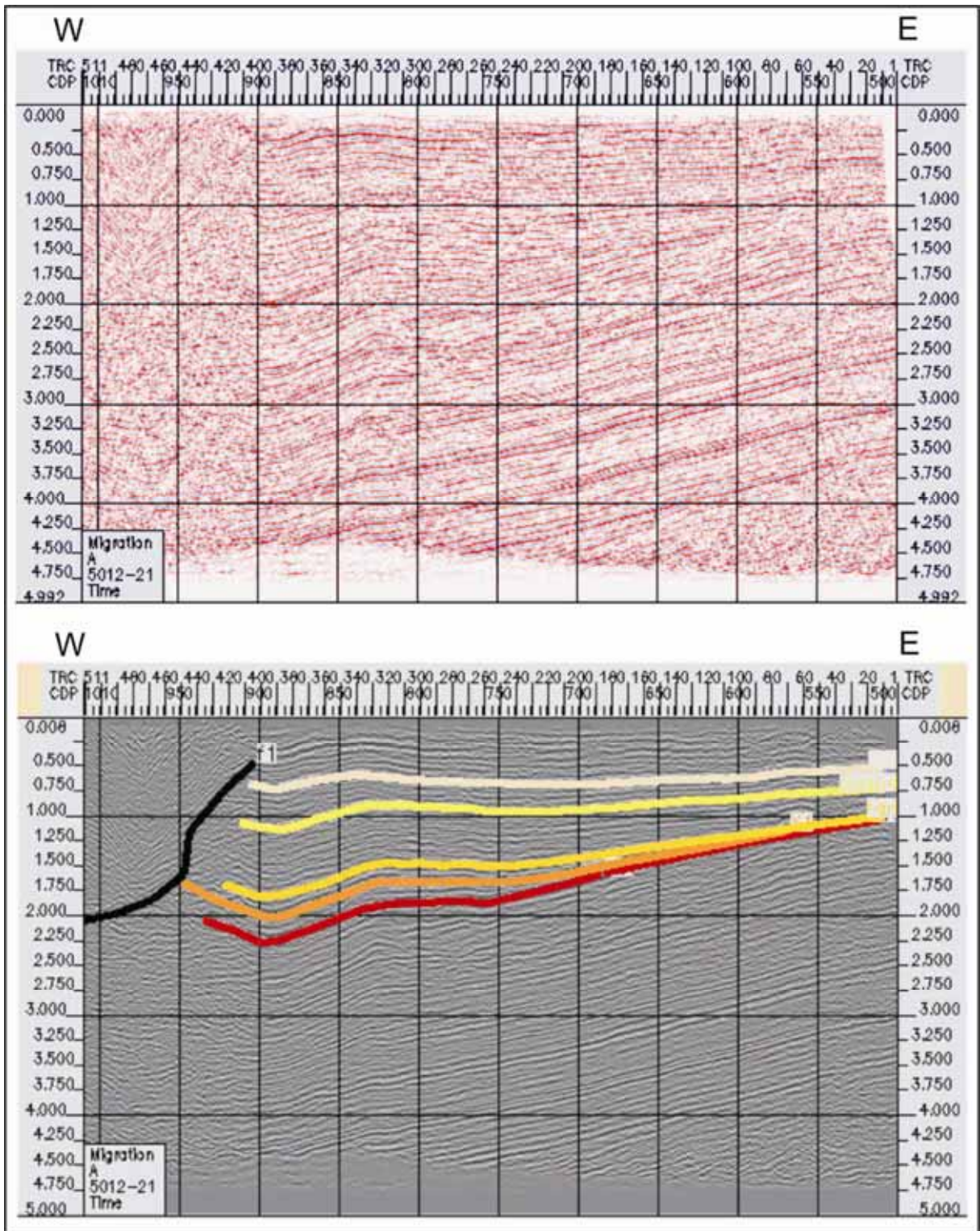


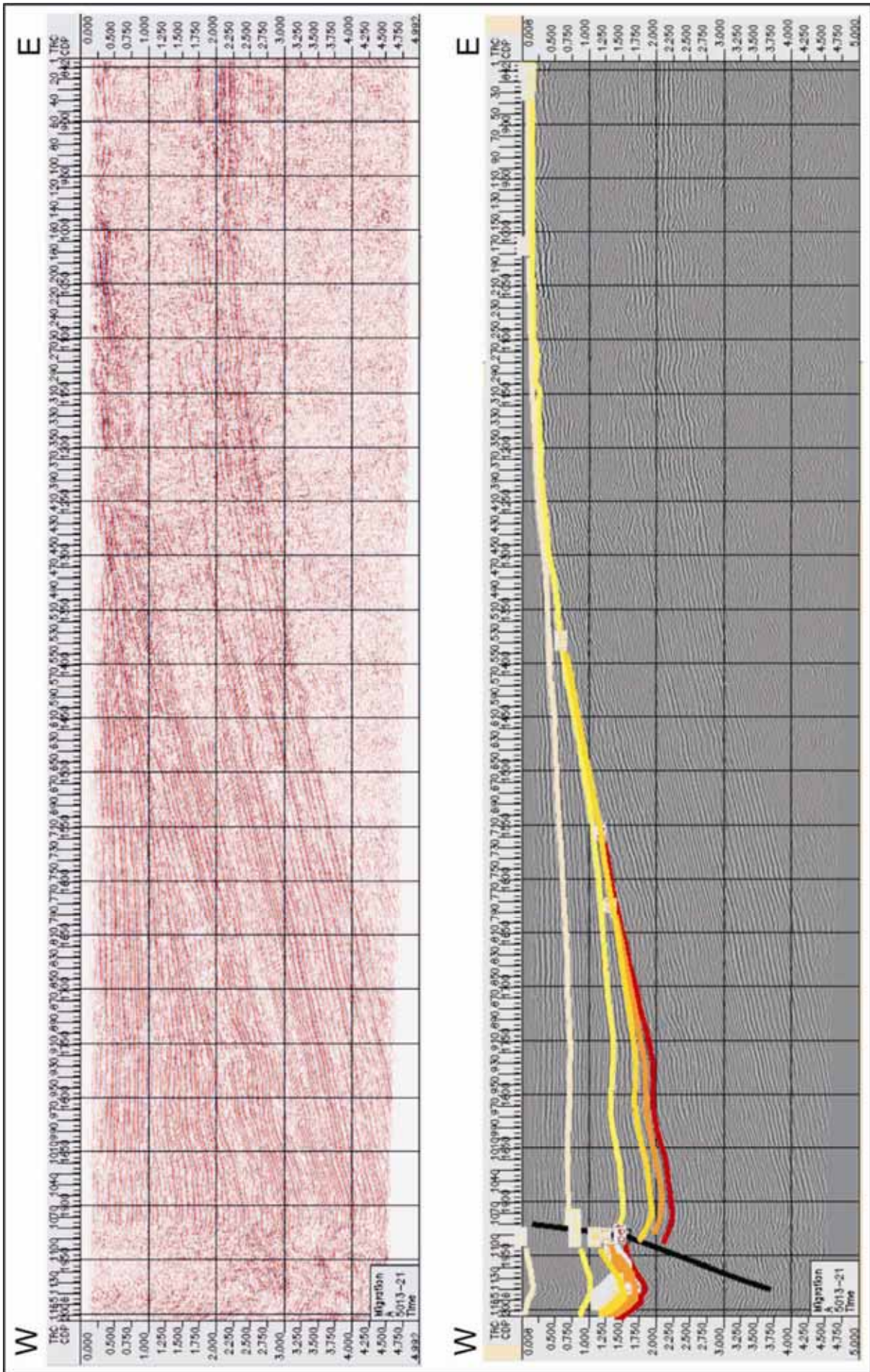


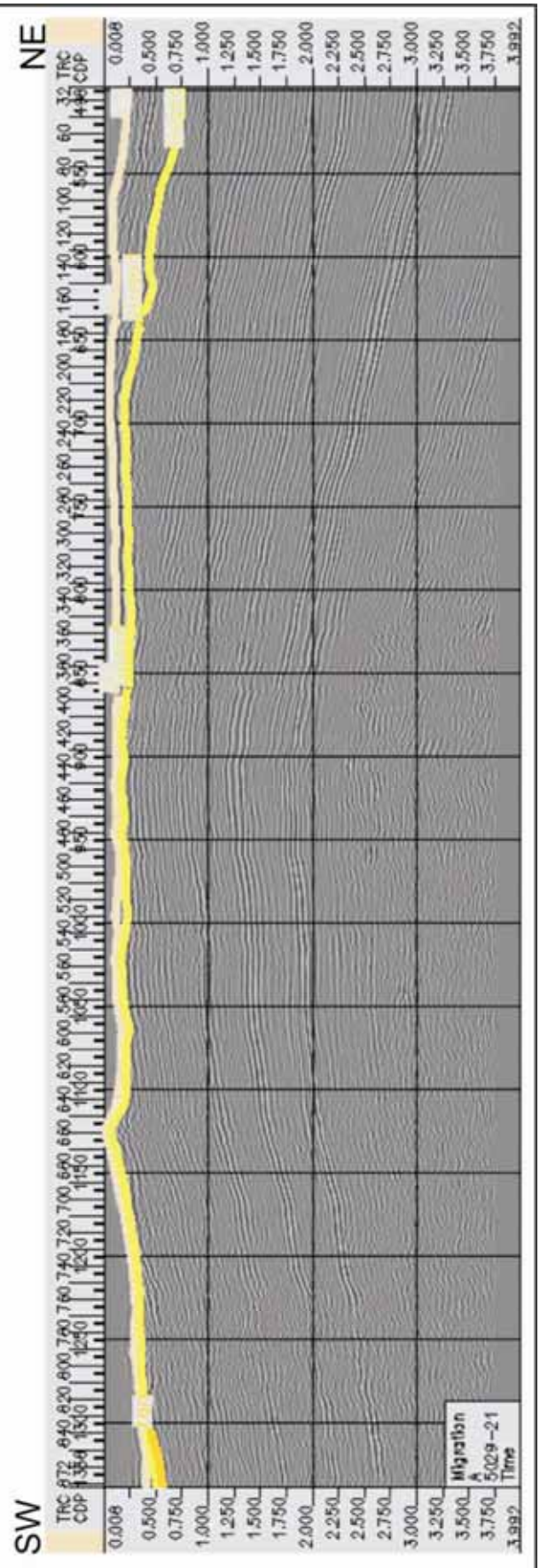
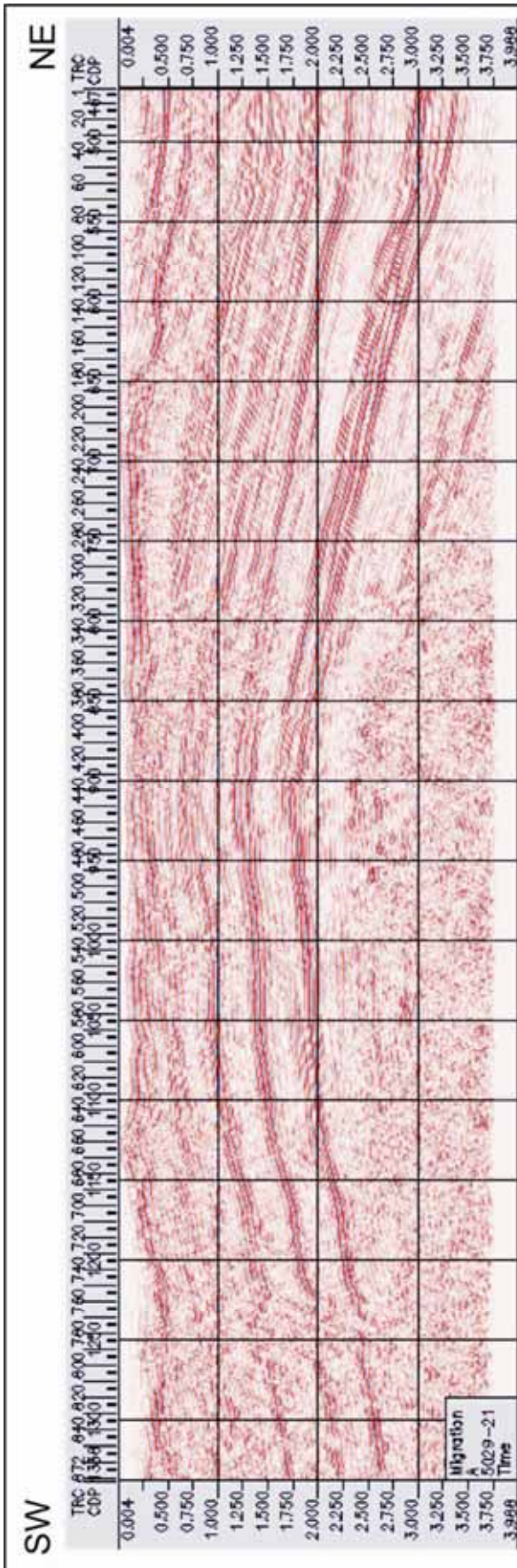


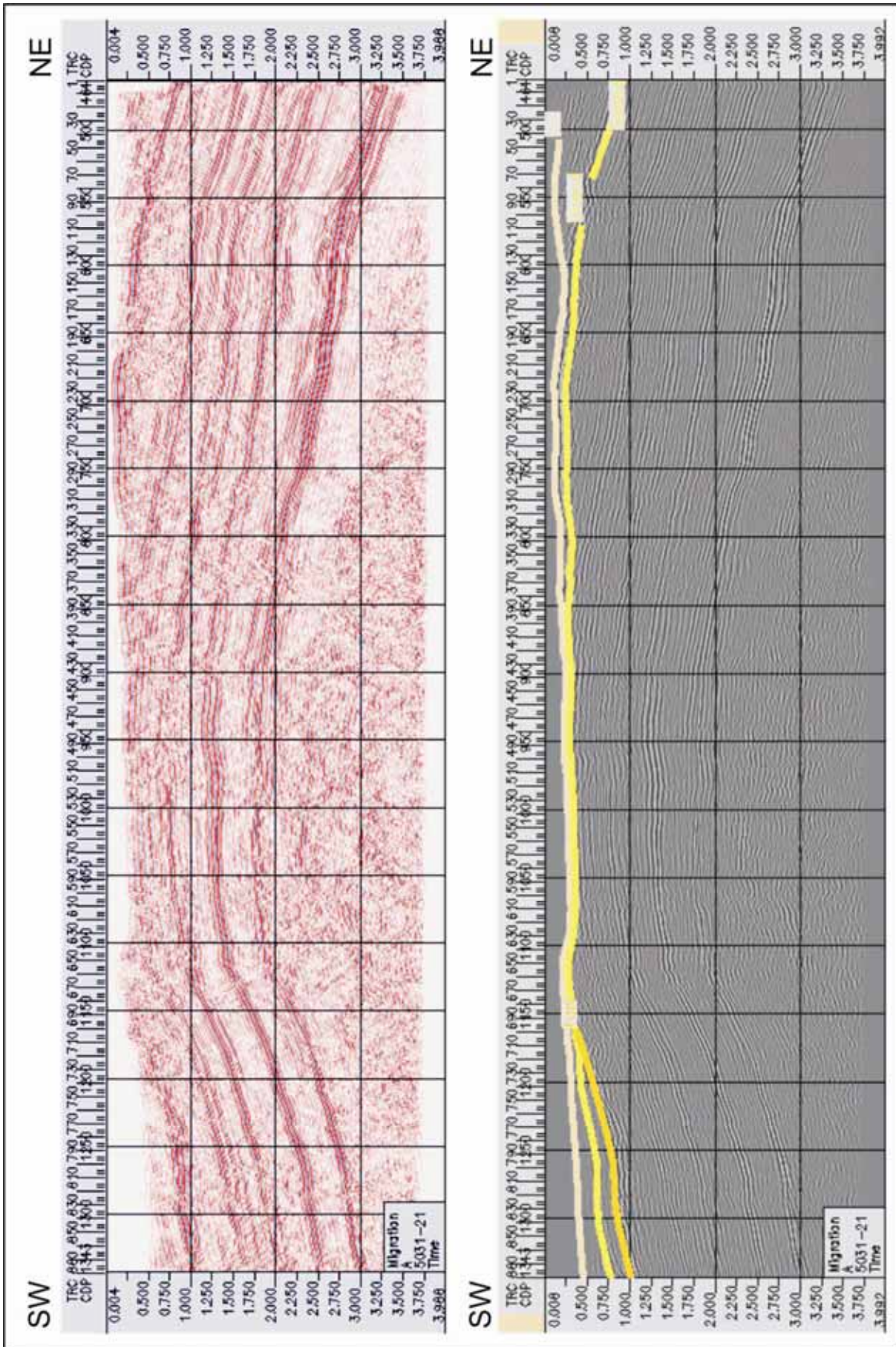


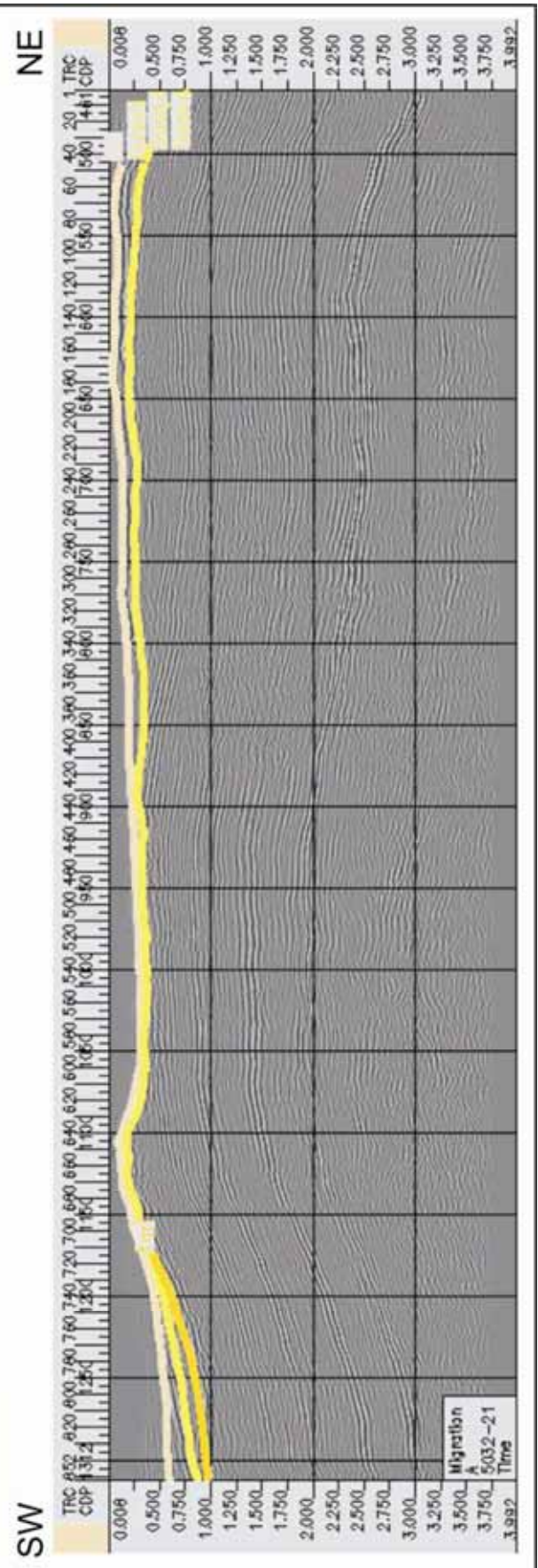
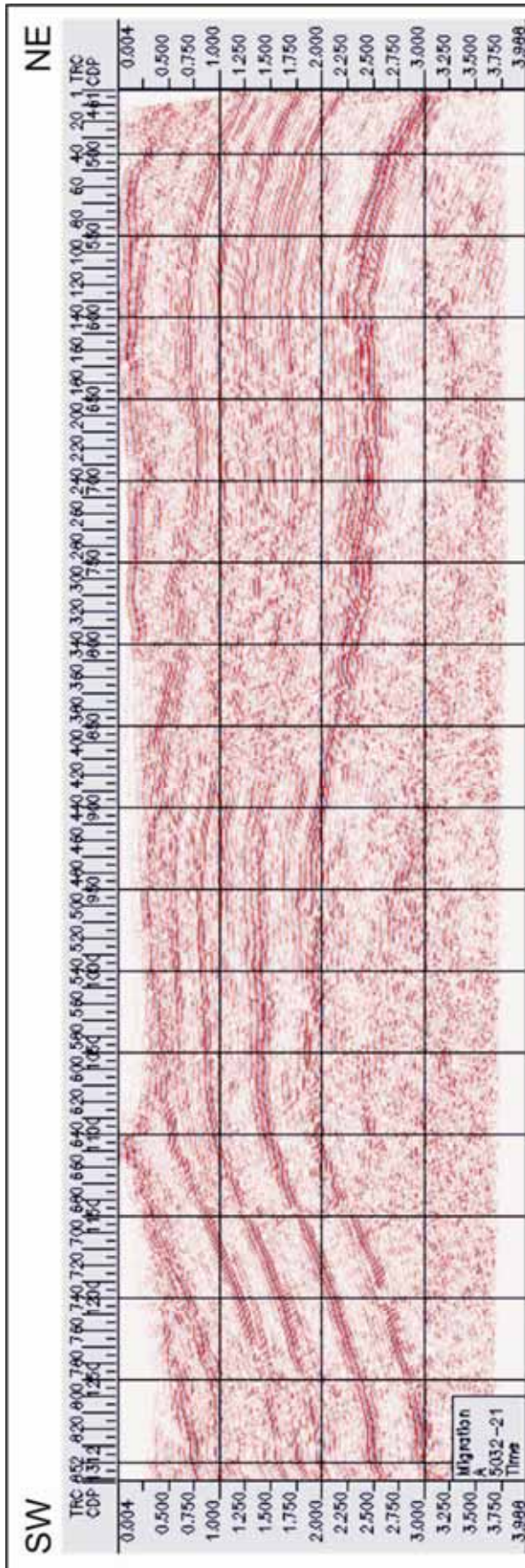


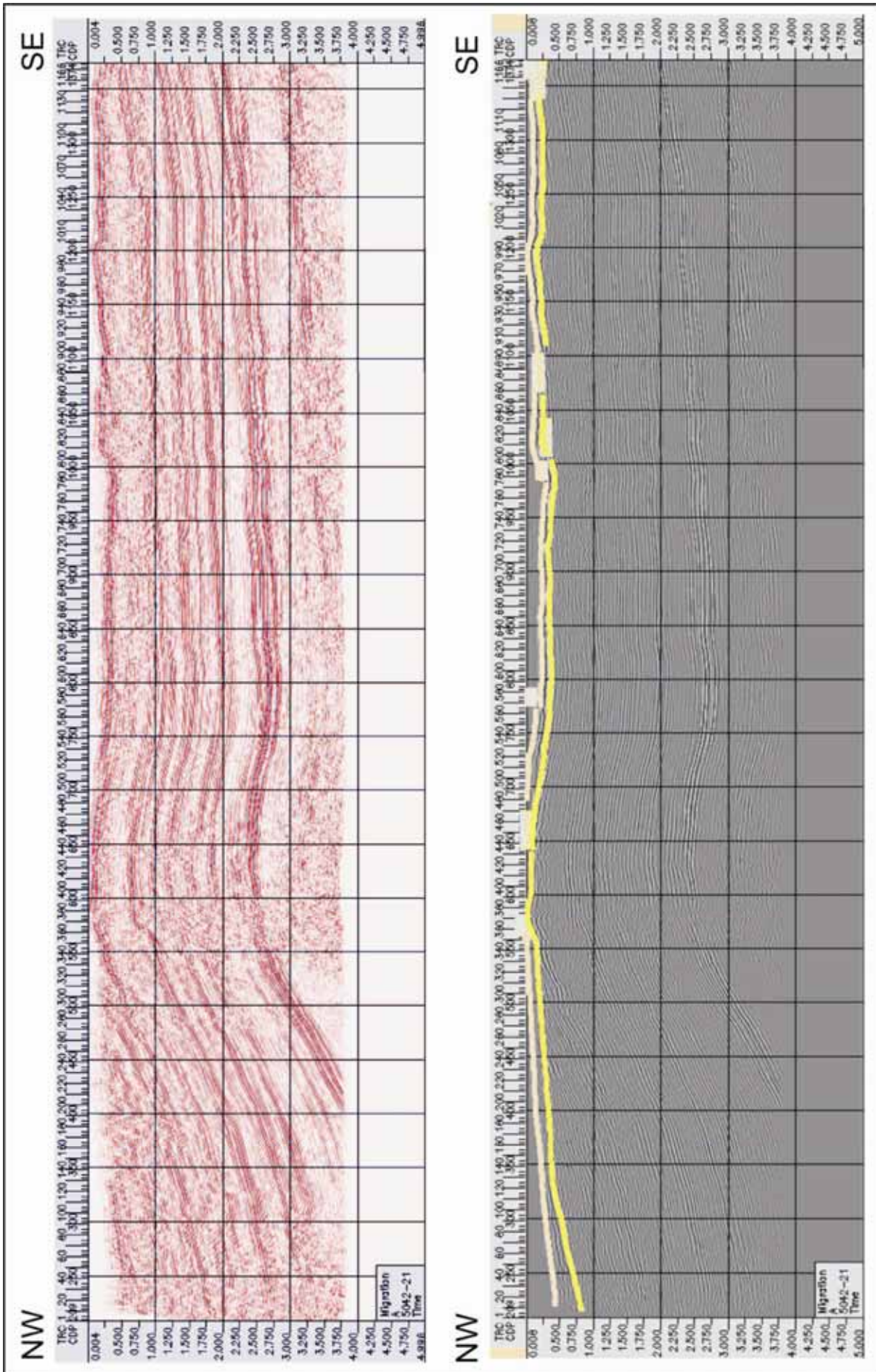


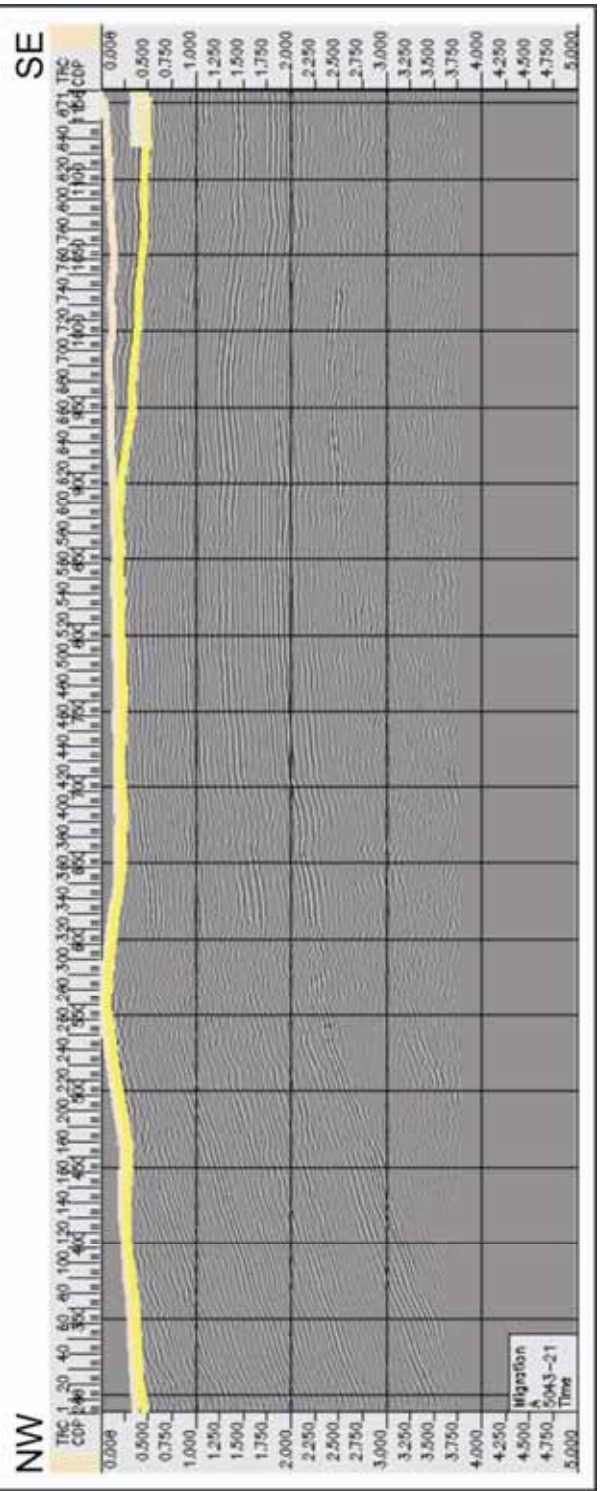
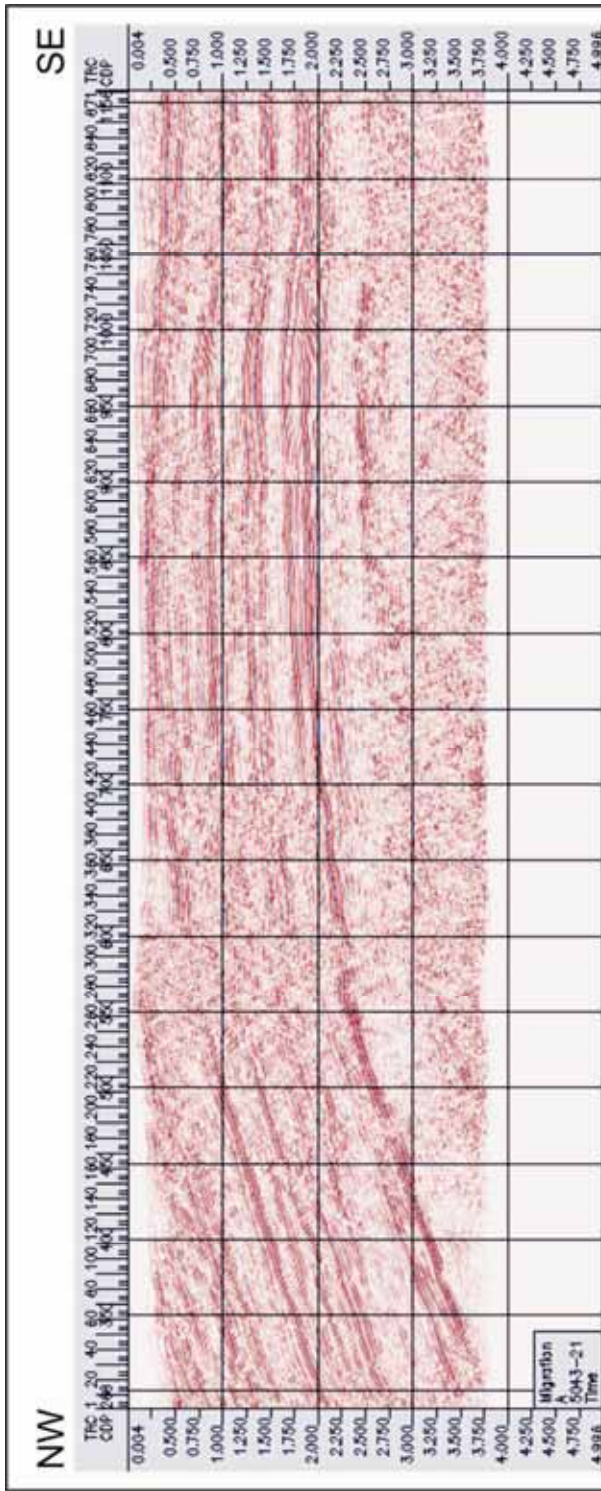


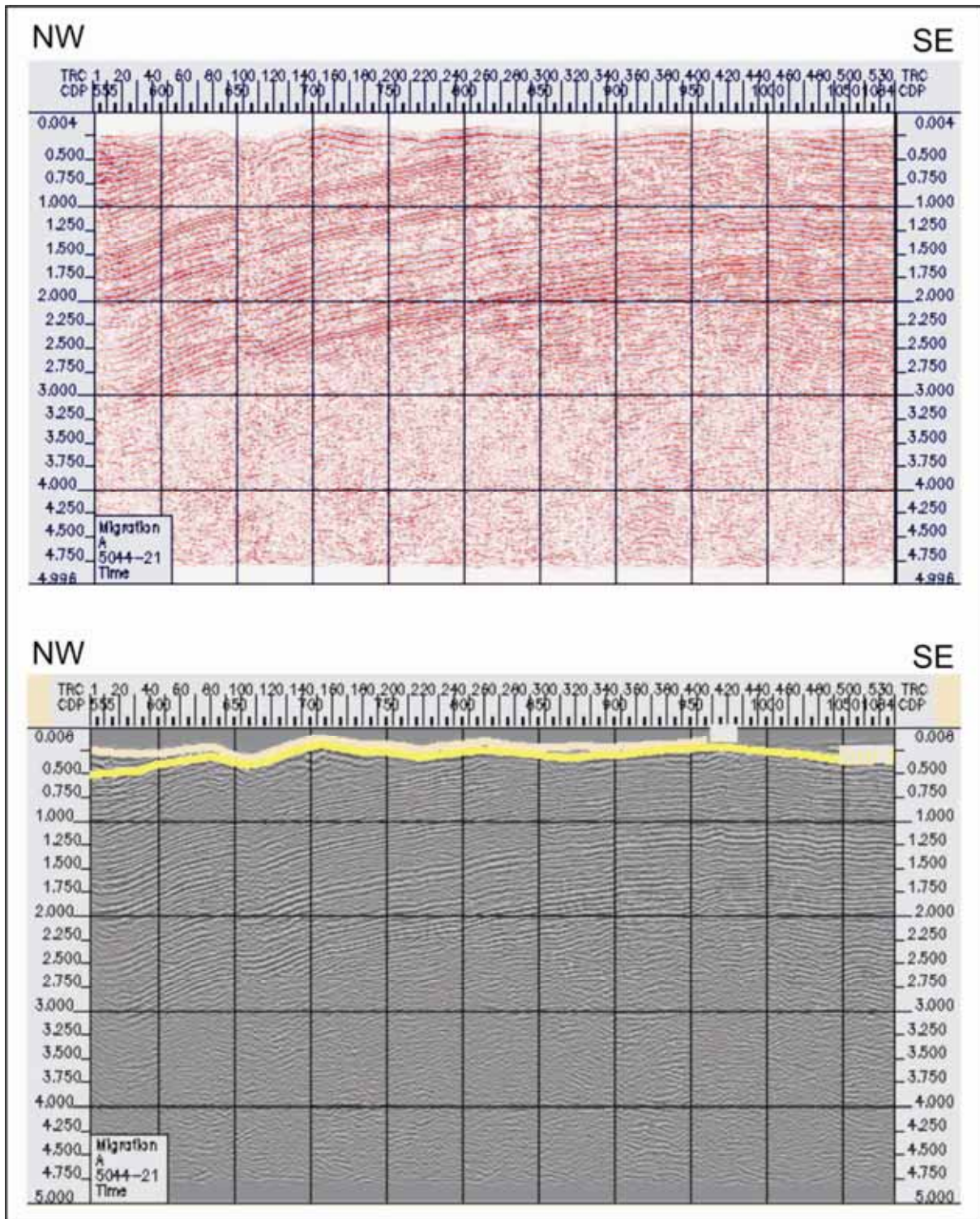


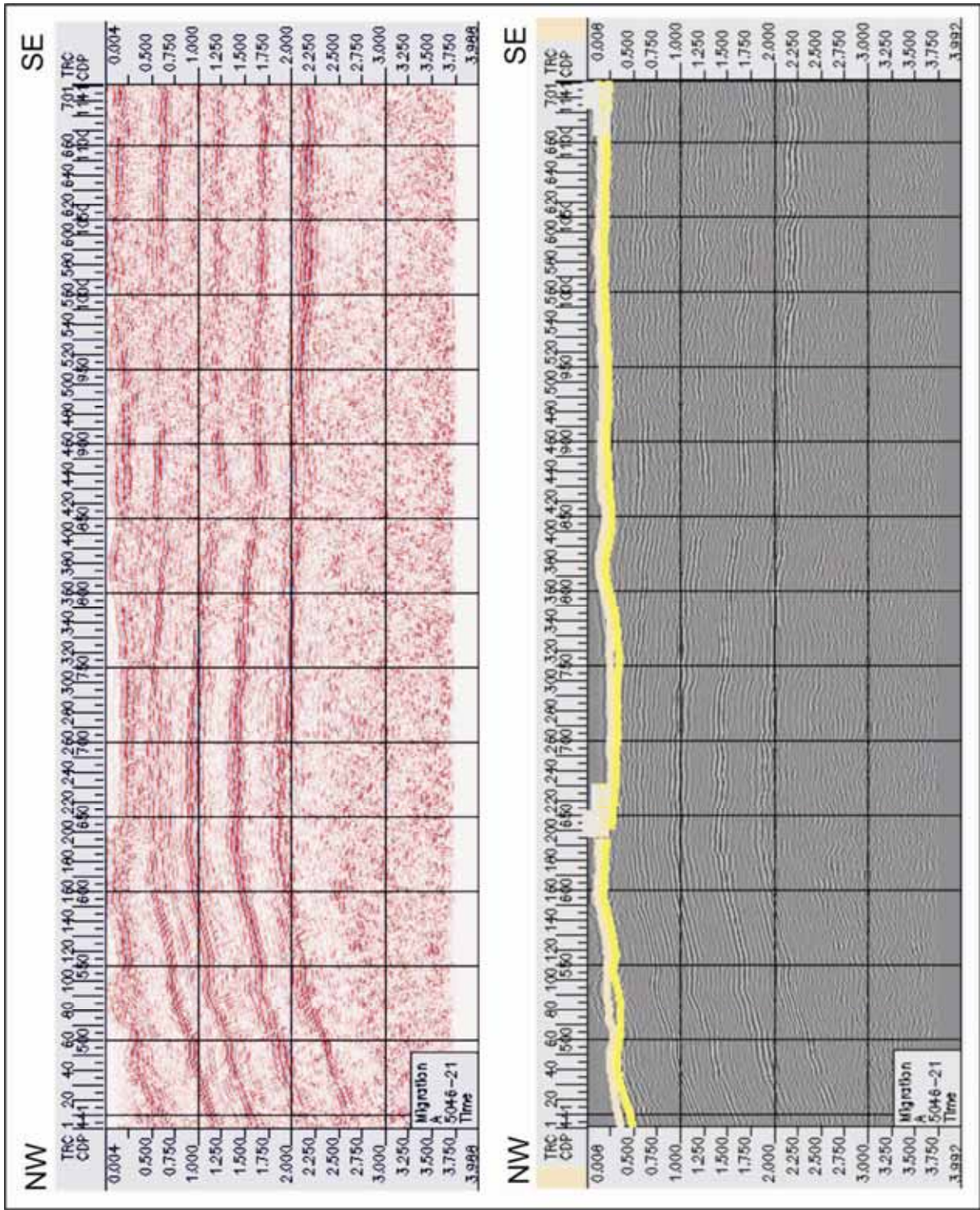


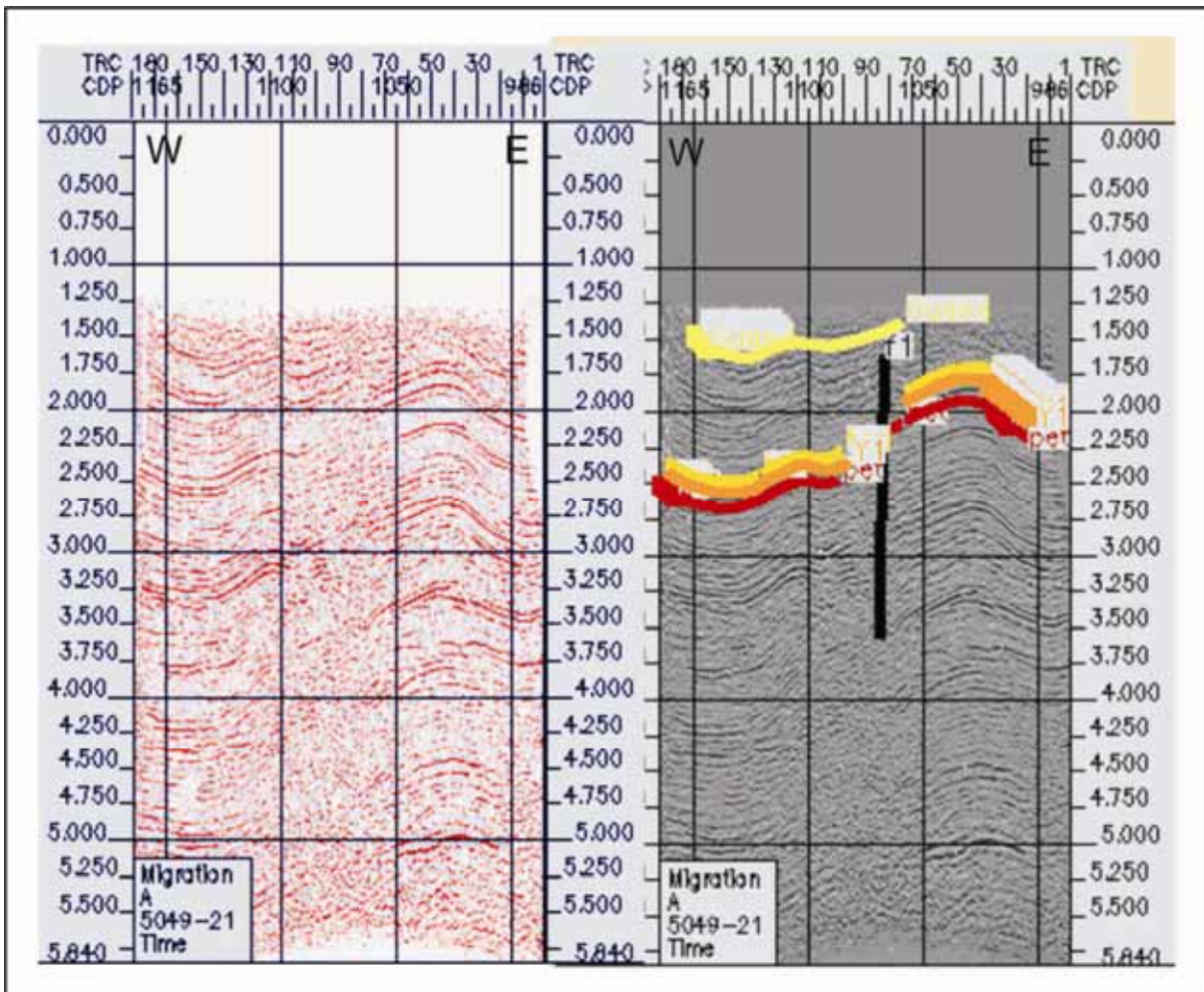


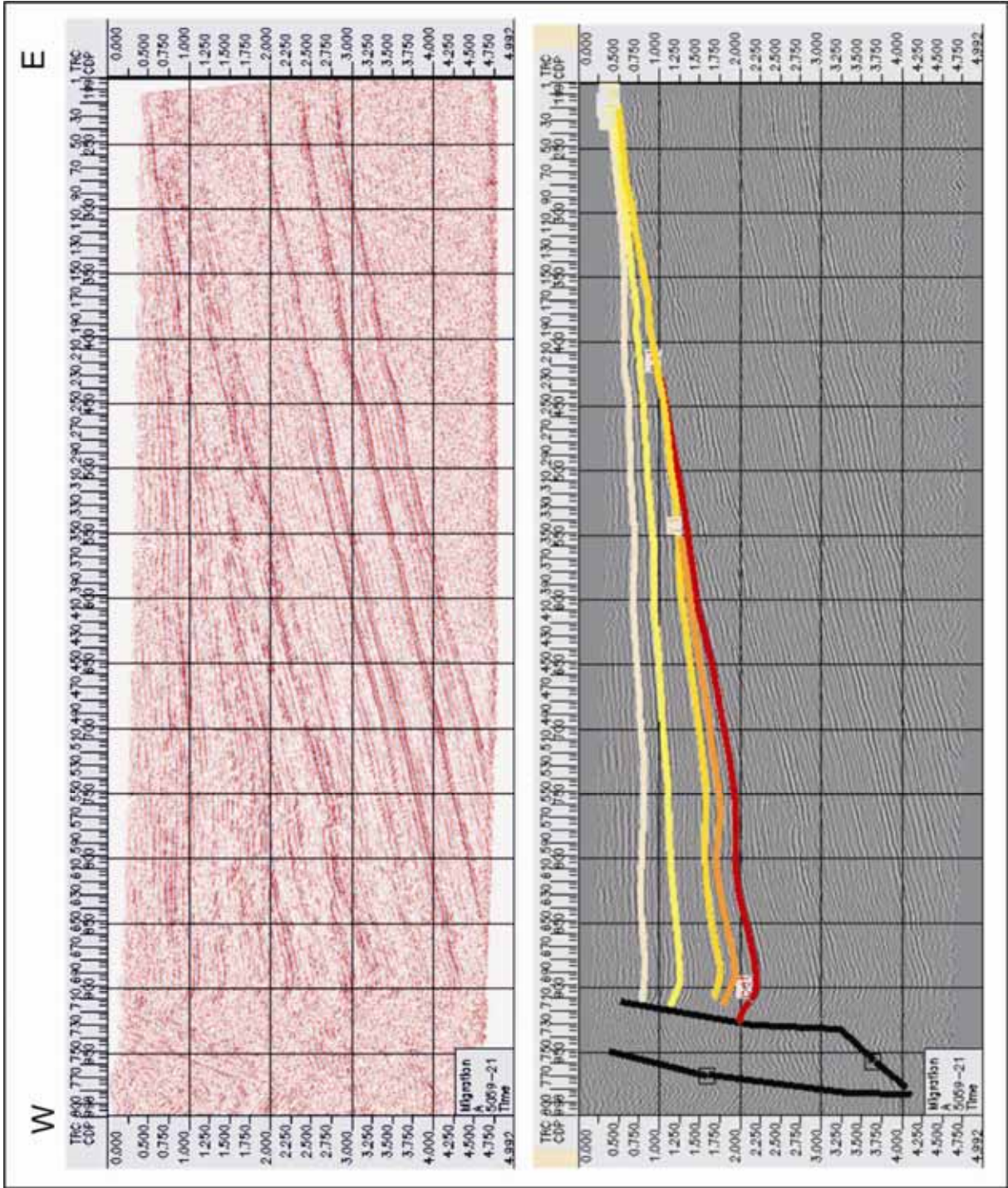


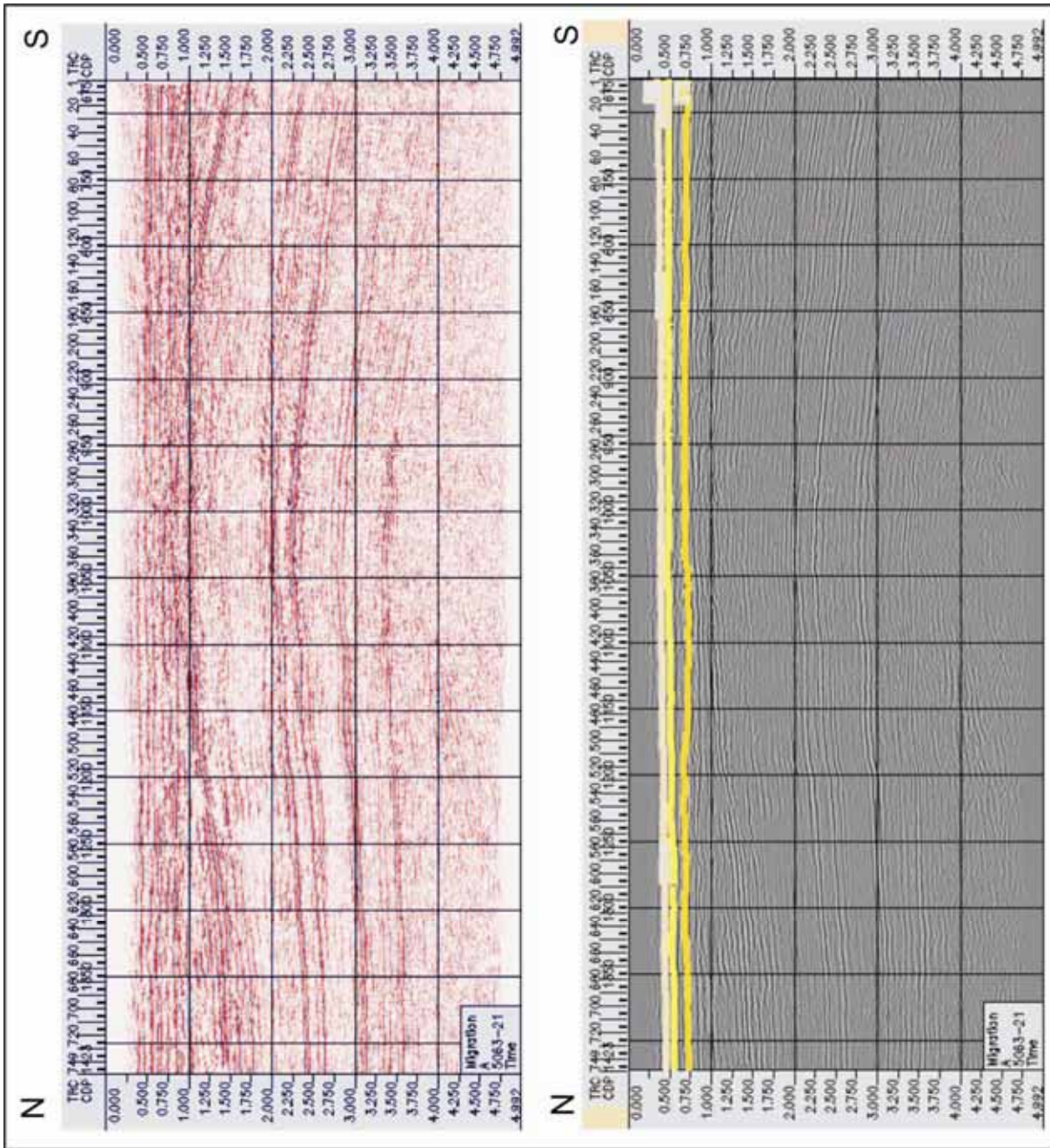


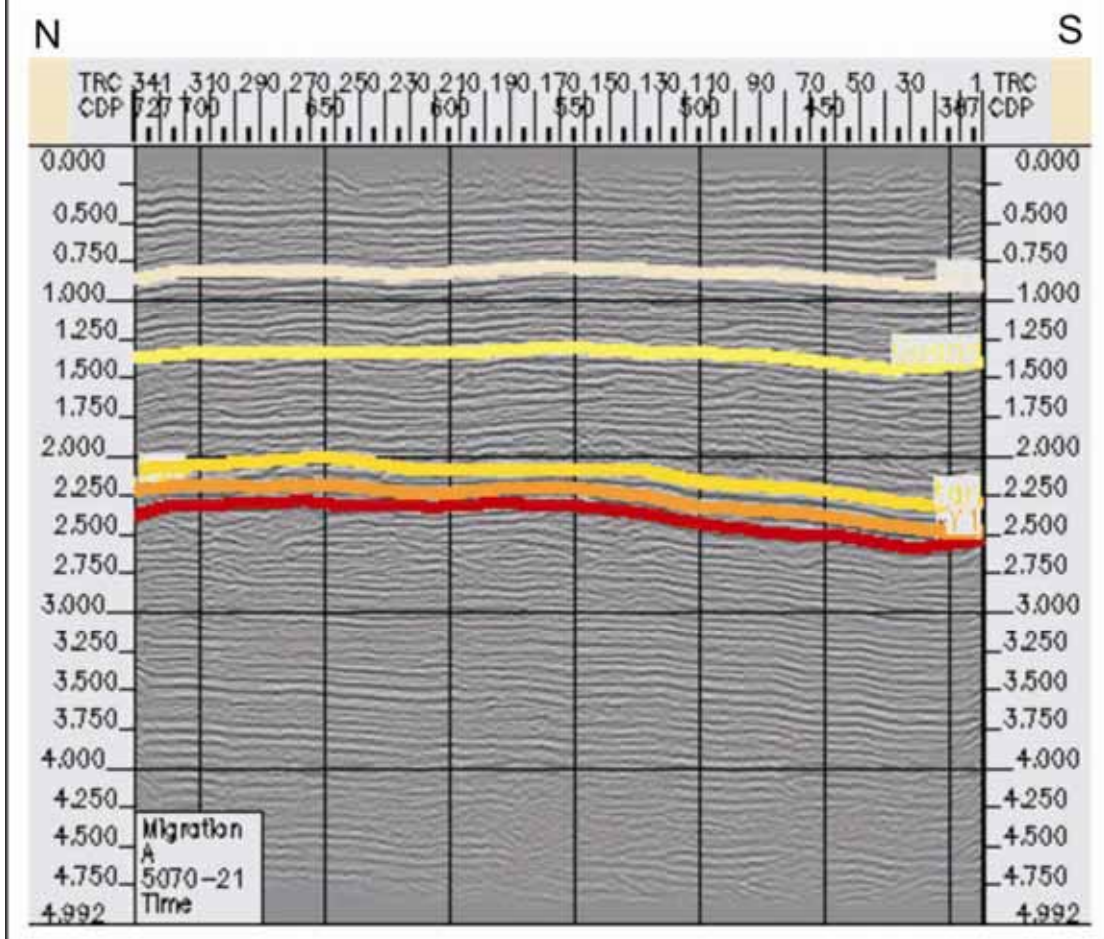
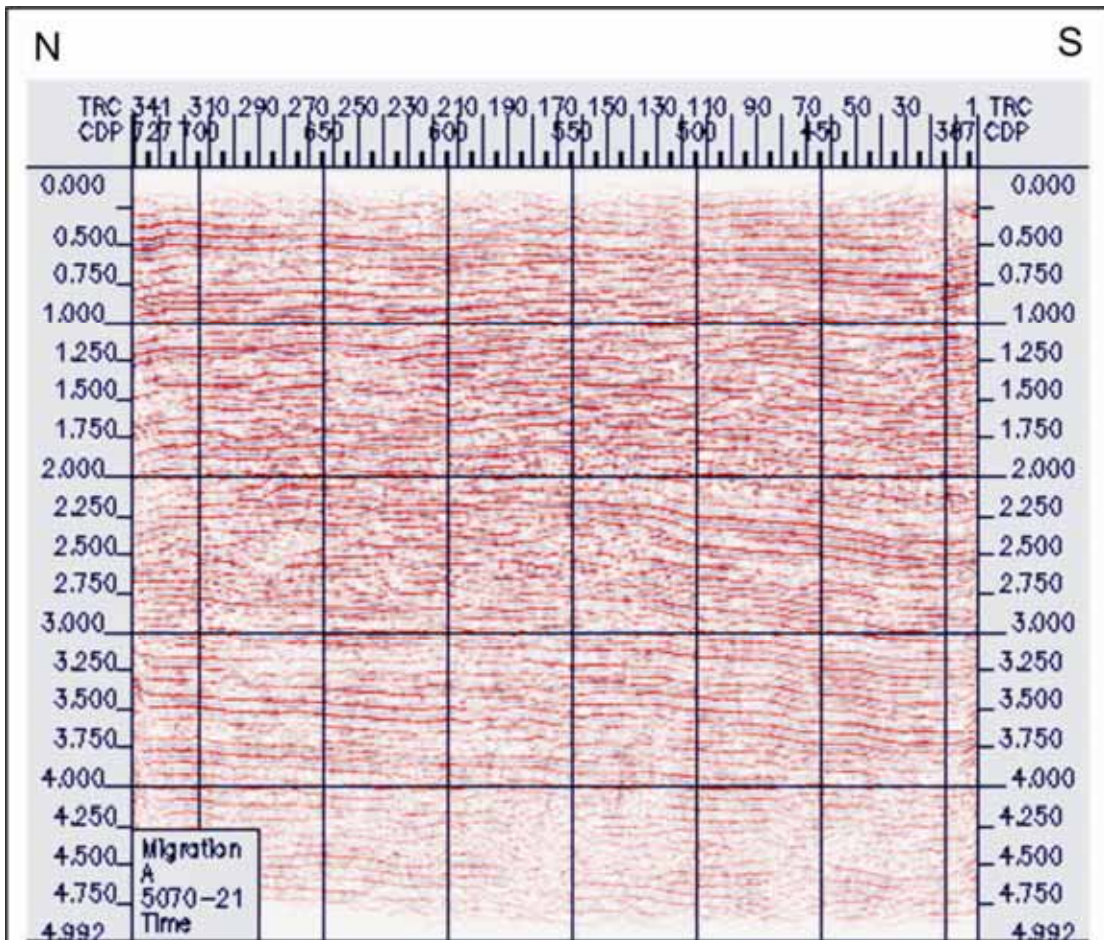


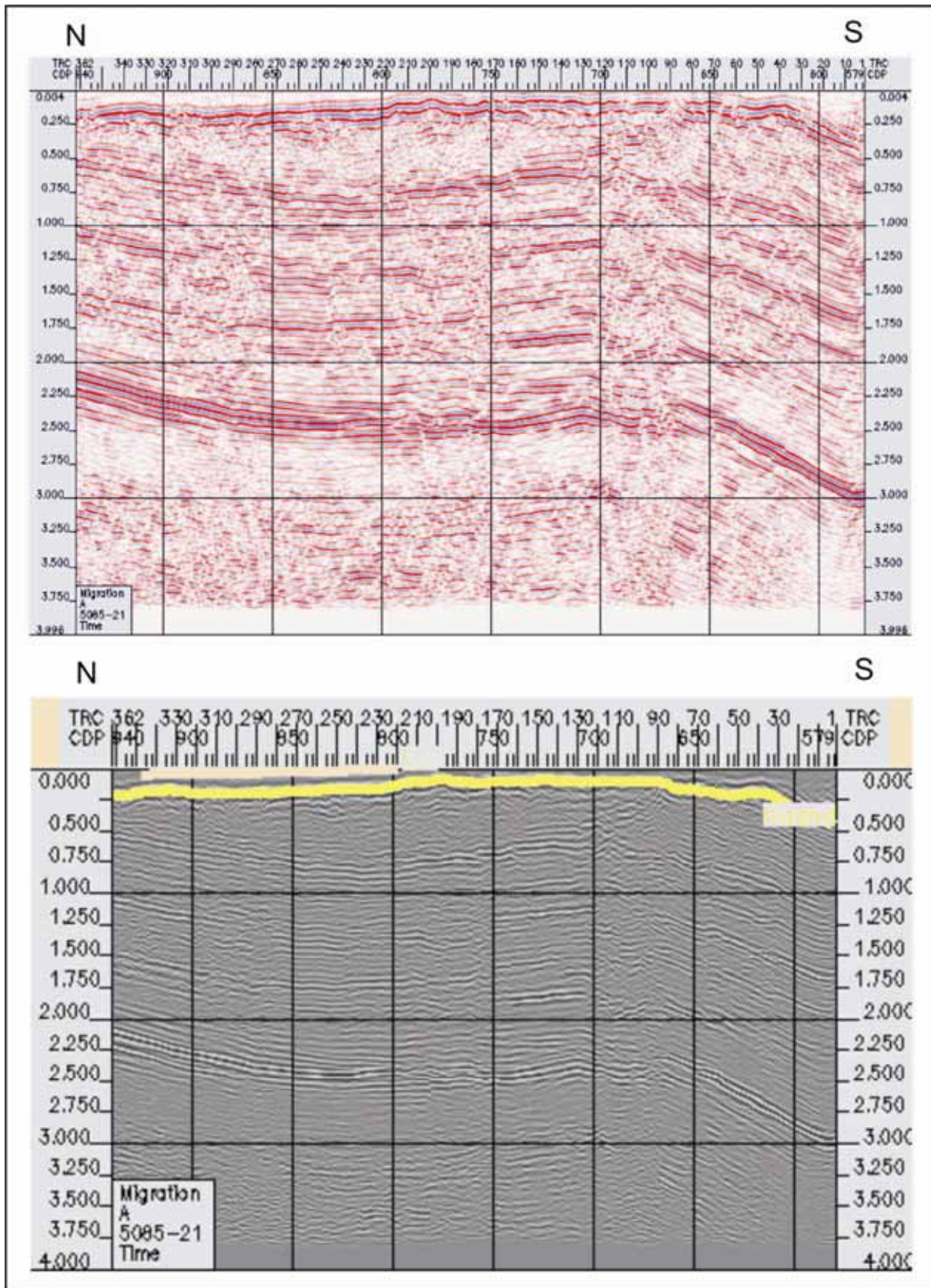


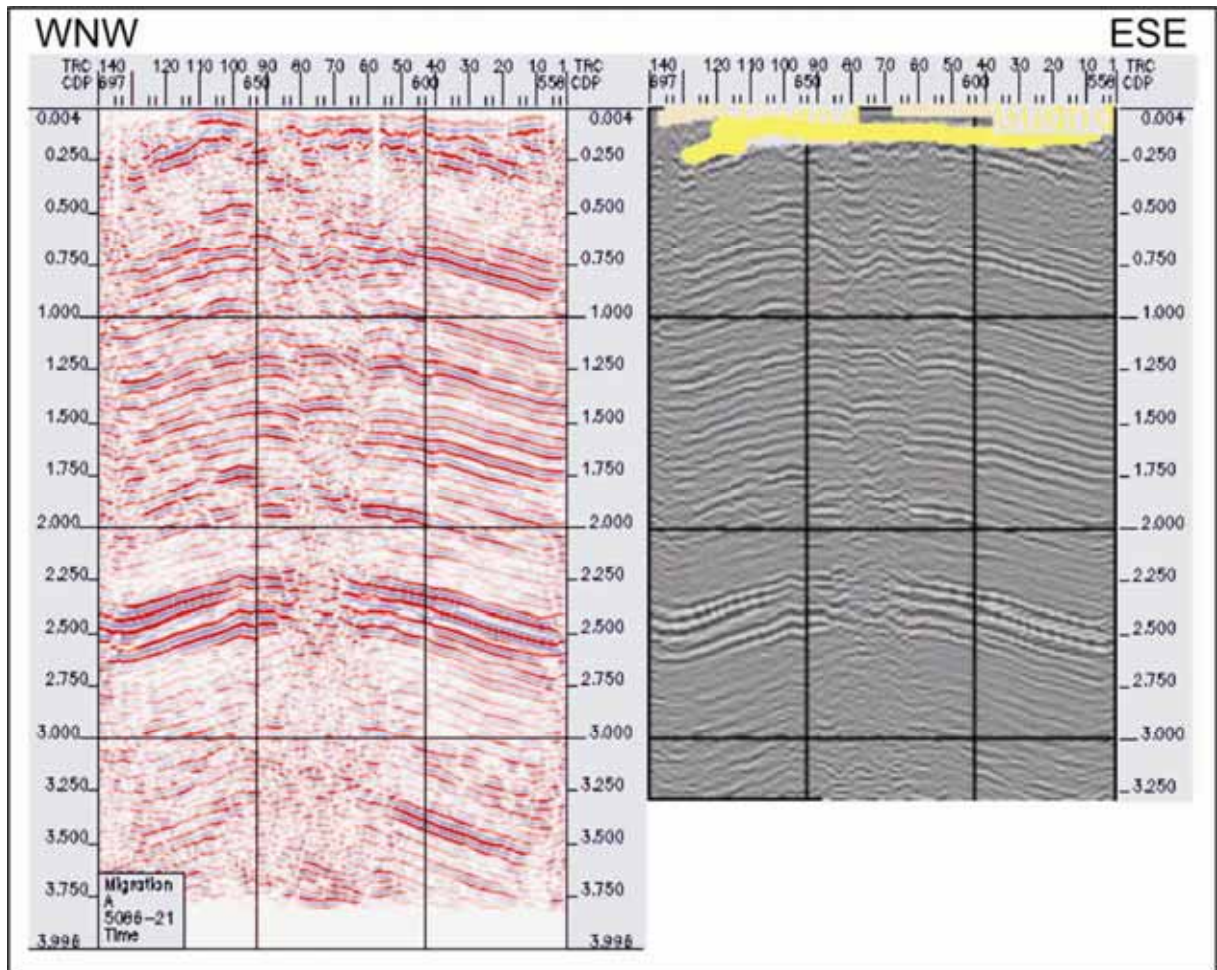


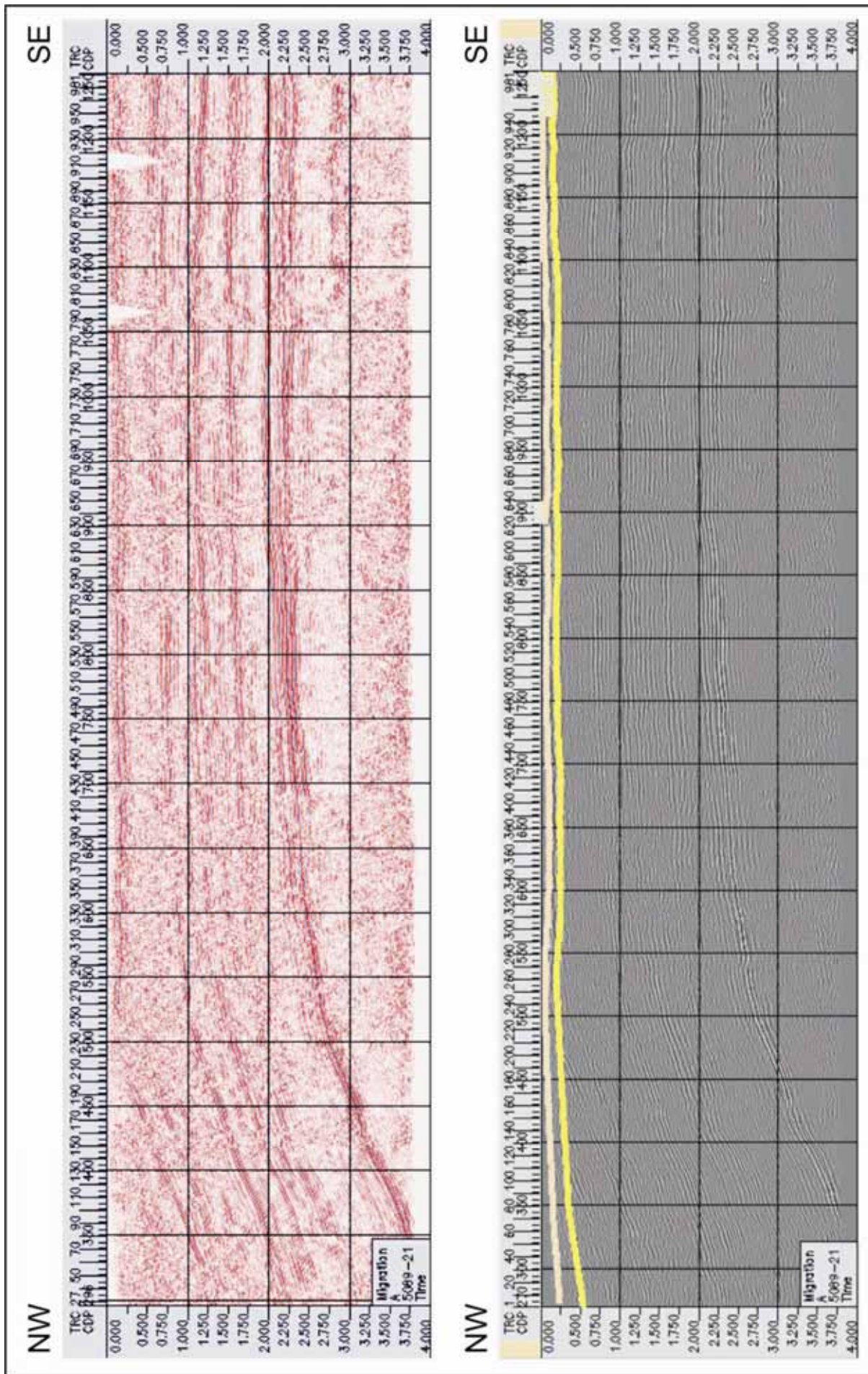


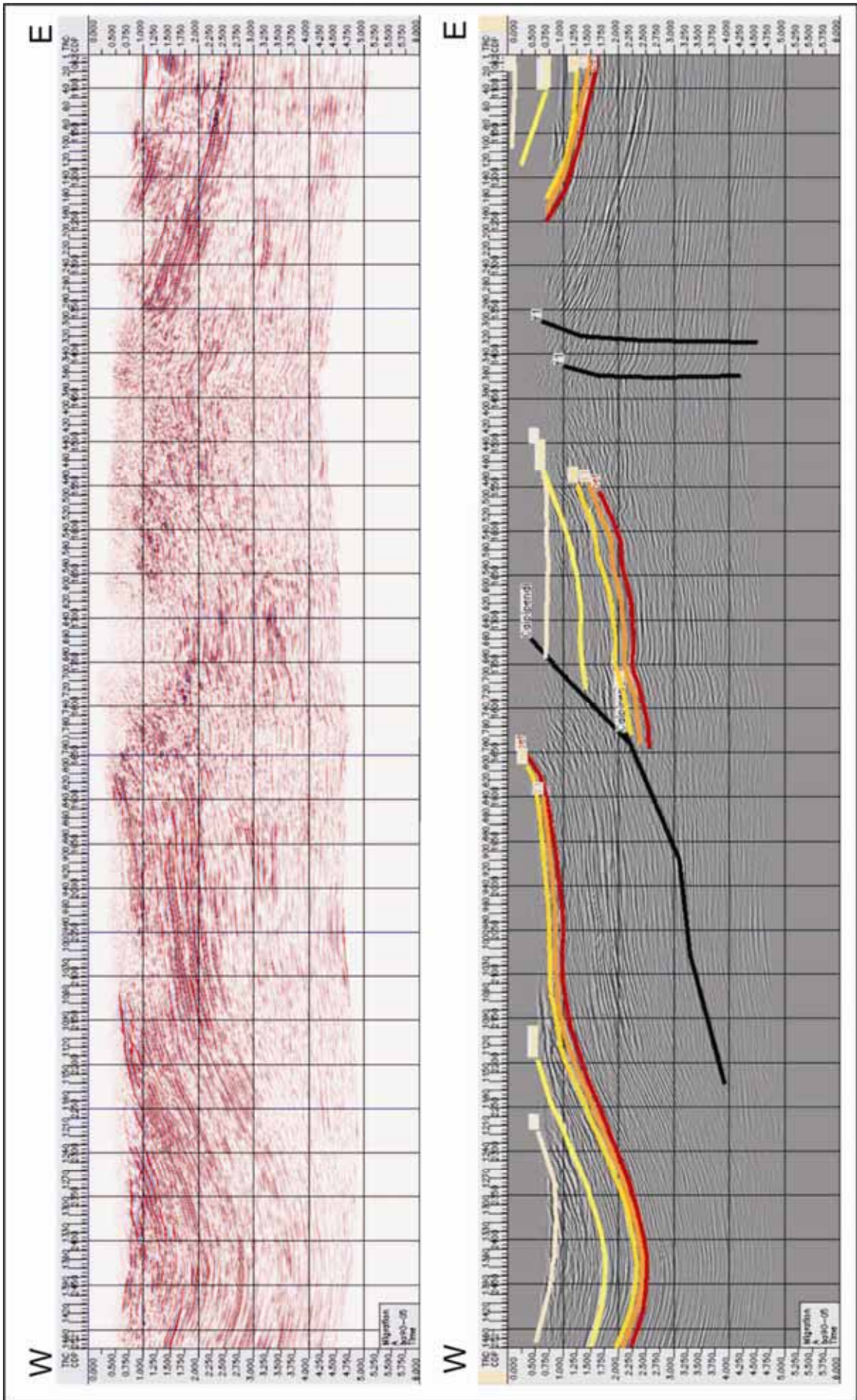


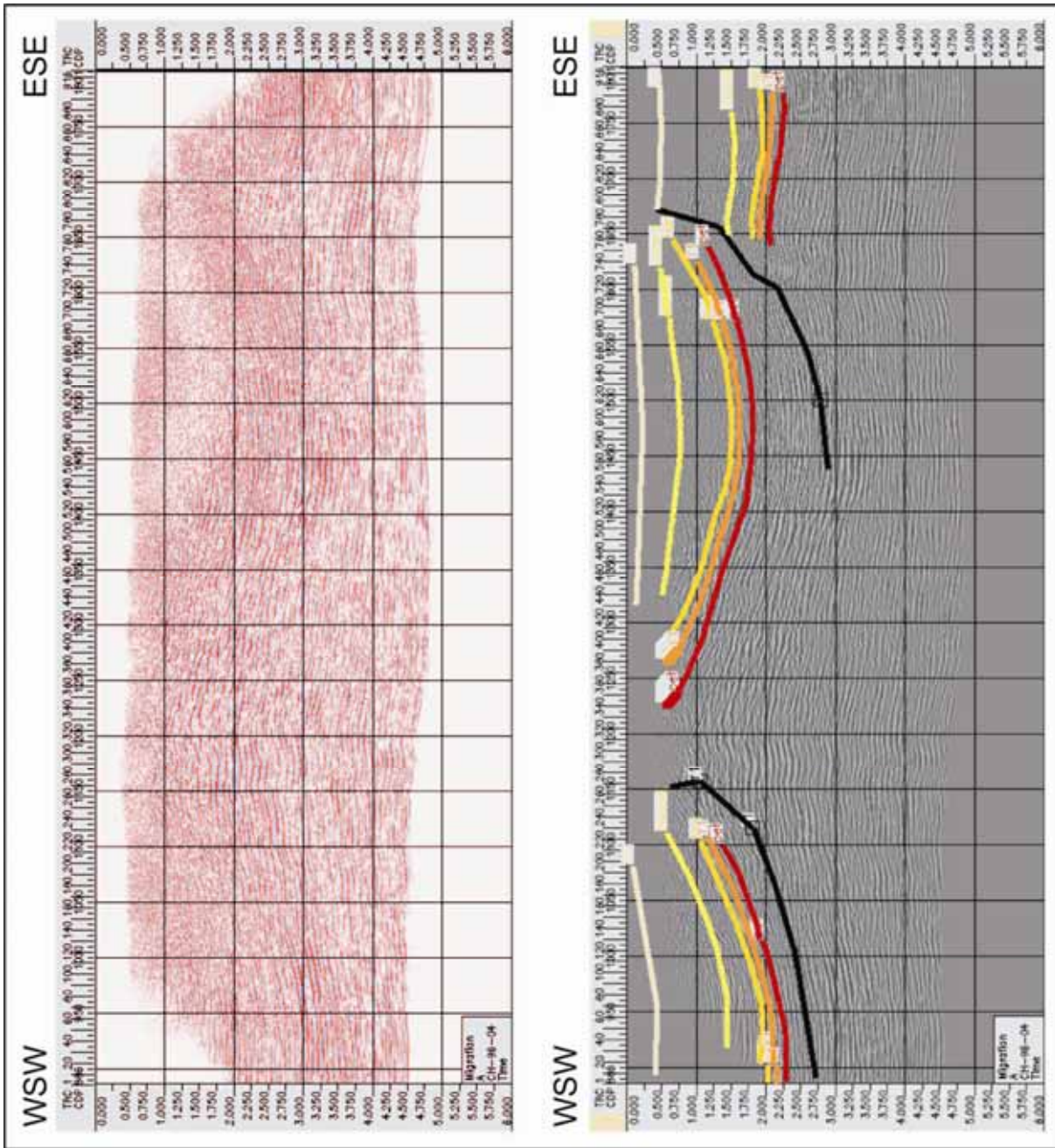


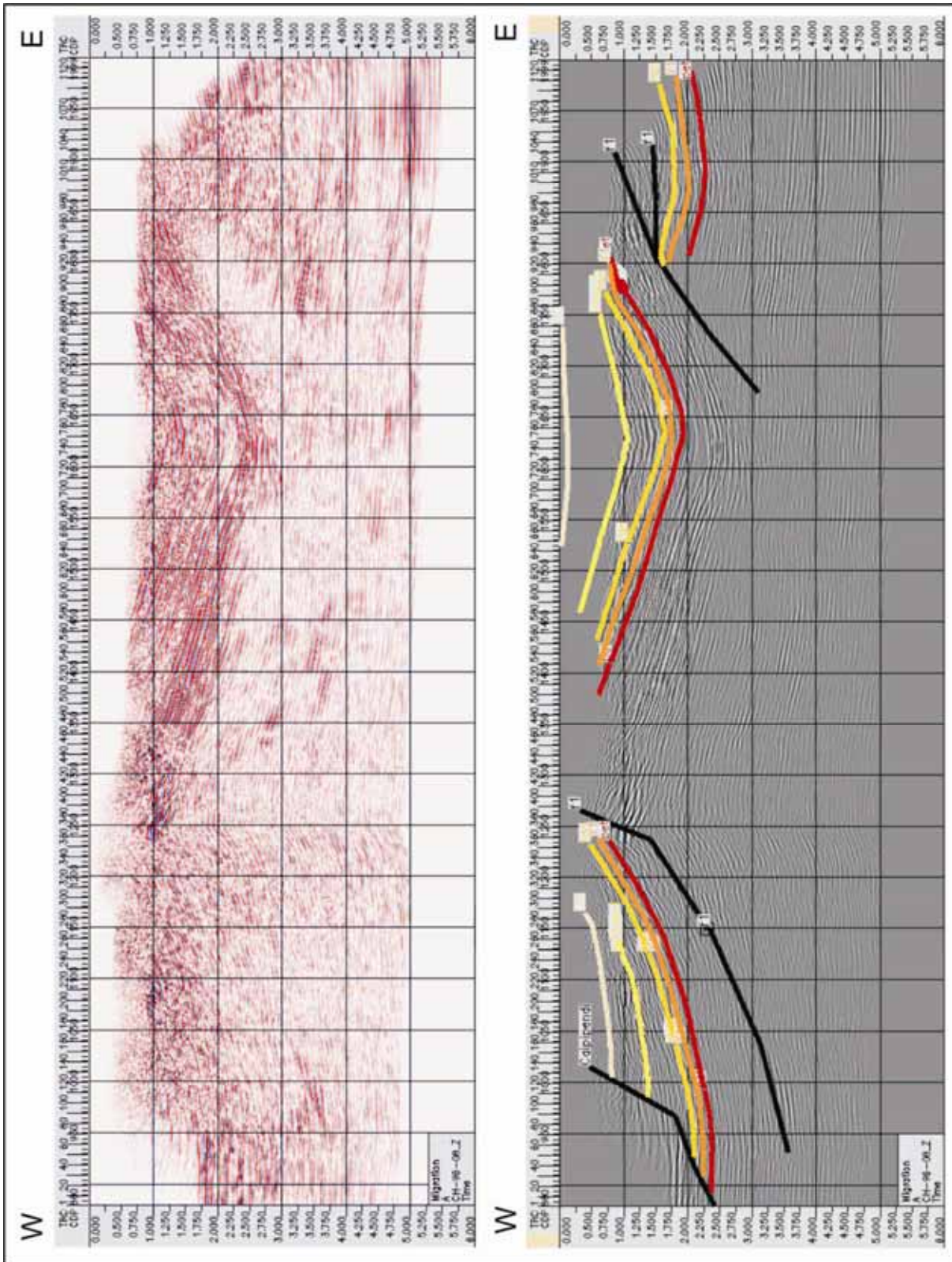


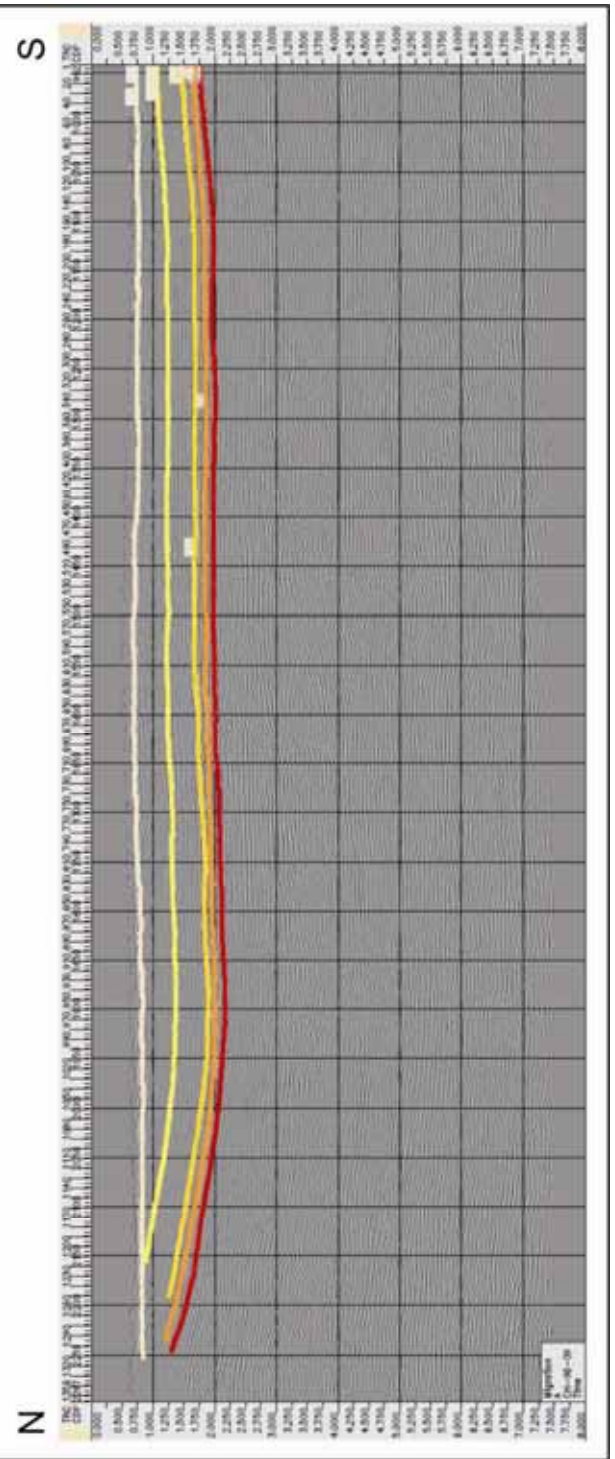
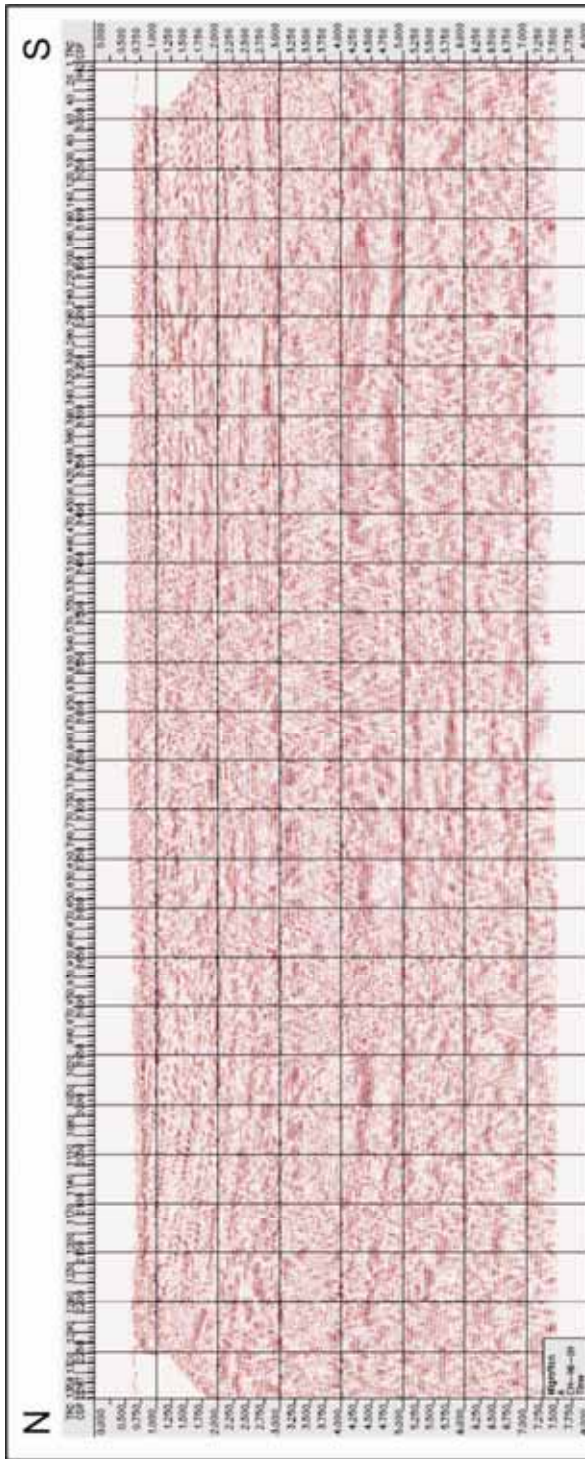


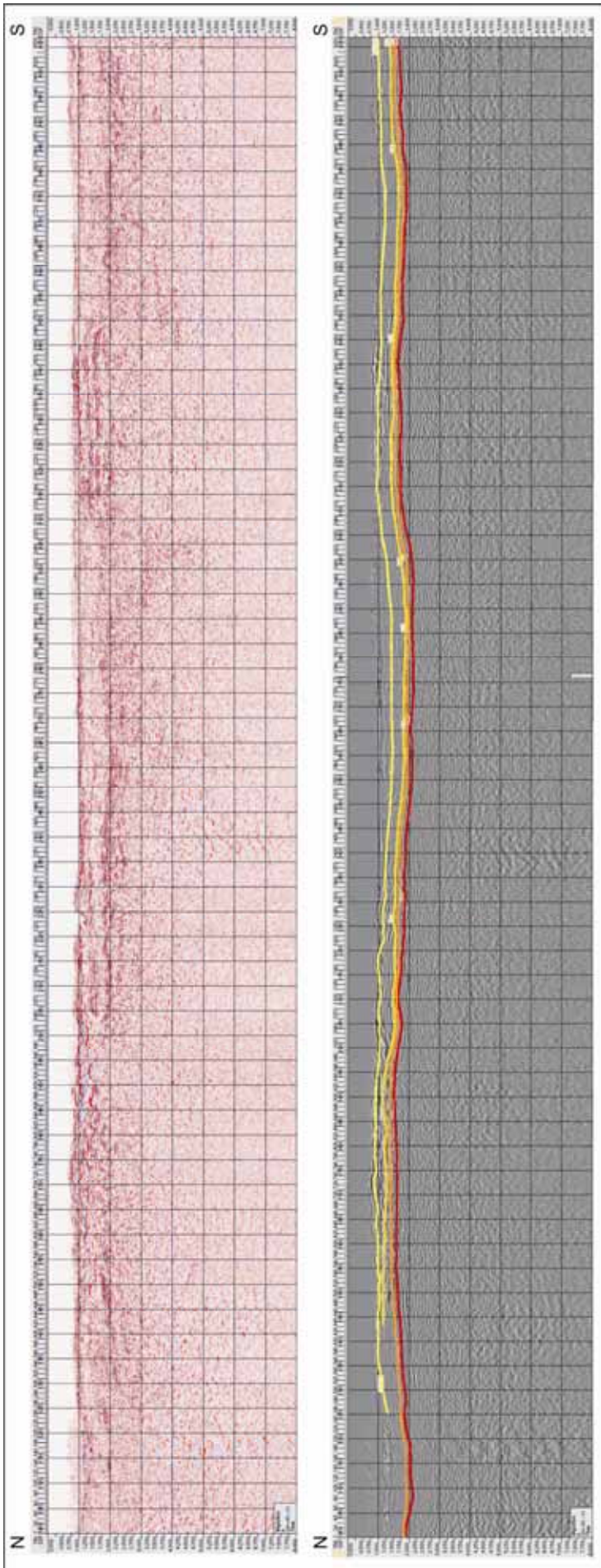












Appendix-G2: Two-way-travel time maps of Area II

