

Redouté's *Les Liliacées*, Candolle and Geneva

Hans Walter Lack, James A. Compton & Martin W. Callmander

Abstract

LACK, H.W., J.A. COMPTON & M.W. CALLMANDER (2025). Redouté's *Les Liliacées*, Candolle and Geneva. *Candollea* 80: 171–195. In English, English abstract. DOI: <http://dx.doi.org/10.15553/c2025v802a3>

Pierre-Joseph Redouté's *Les Liliacées* is a famous work on petaloid monocots with a complex background published in Paris in 1802–1815. While the plant illustrations were produced by Redouté and a team of engravers and printers, Augustin-Pyramus de Candolle, François Delaroche and Alire Raffeneau-Delile provided the plant descriptions. Based on archival evidence it is shown that the text for volumes 5–7 was written by Delaroche (not as previously believed for volumes 5–6), while volumes 1–4 are by Candolle and volume 8 with a few exceptions by Raffeneau-Delile. The pertinent herbarium record is extremely fragmentary, but a small number of specimens has been traced in the herbarium of the Conservatoire et Jardin botaniques in Geneva, which help to interpret the names validated in *Les Liliacées*. In addition, the archives of this institution preserve a selection of black proofs and colour proofs of the engravings which offer a peephole to Redouté's studio, while several letters offer additional information on the working process. Augustin-Pyramus de Candolle's role in the project, his special interest in *Narcissus* L. resulting in the current subdivision of this genus and his contacts with Delaroche and Raffeneau-Delile are discussed. In an appended list the historical and correct names are provided for all plants illustrated on tab. 1–240 and 480–486, which have been provided with descriptions and comments by Candolle.

Keywords

Petaloid monocots – *Les Liliacées* – *Narcissus* – Botanical illustration – Candolle – Delaroche – Engraving and printing techniques – Herbarium record – Raffeneau-Delile

Addresses of the authors:

HWL: Botanischer Garten und Botanisches Museum Berlin, Freie Universität Berlin, Königin-Luise-Str. 6-8, 14195 Berlin, Germany.
E-mail: h.w.lack@bo.berlin

JAC: Spilsbury Farm, Tisbury Row, Tisbury near Salisbury, Wiltshire SP3 6RU, England.

MWC: Conservatoire et Jardin botaniques de Genève, ch. de l'Impératrice 1, C.P. 71, 1292 Chambésy, Switzerland.

Submitted on March 27, 2025 – Accepted on August 13, 2025 – First published online on September 24, 2025
ISSN: 0373-2967 (print), 2235-3658 (online) – Published by the Conservatoire et Jardin botaniques de Genève
Open access article under Creative Commons Attribution Licence (CC BY 4.0)

Introduction

Pierre-Joseph Redouté (1759–1840)'s *Les Liliacées* is one of the most famous botanical books ever produced. Although the reported print run of 280 is not small, astronomical prices are being asked for it and are paid in the rare case that a complete copy with its eight volumes turns up on the market. For obvious reasons *Les Liliacées* is the kind of work which is always kept in the strong room and put on show only when appropriate security measures are in place, in particular since thefts are legendary and have been documented for almost a century. The production of *Les Liliacées* illustrated with a total of 486 engravings was a project in grand style that has been appropriately considered to be the “highest peak in the mountain range of his [i.e. Redouté's] achievements” (STEARN, 1981: 19). For reasons explained in this paper *Les Liliacées* is at the same time a complex work. Three authors were involved in writing the plant descriptions, while Redouté as plant illustrator and a team of engravers and printers produced the illustrations. Only very limited attention was given so far to the herbarium record which is extremely fragmentary. As a consequence, only the correct names of the plants illustrated in this book can be determined, while in exceptional cases the pertinent specimens are additionally available for study.

Although *Les Liliacées* was written, illustrated and printed in Paris between July 1802 and September 1815 (REDOUTÉ, 1802–1815; STAFLEU & COWAN, 1983: 626–627), no original material of the production process has ever been located there. The manuscripts and the proofs of the text pages are untraceable, the watercolours are today widely dispersed and kept largely in private hands in the US and in England, the engraved copper plates were ruthlessly melted down. During research for the recently published in-depth analysis of the life and work of the Redouté brothers, *The Redouté brothers. Masters of scientific illustration in Paris* (LACK et al., 2024), the last author discovered a small number of miscellaneous materials pertinent to the production of the great work, all kept in the Conservatoire et Jardin botaniques in Geneva [CJBG] (CJBG: Can.1.6.1). These materials were studied by the first author after the completion of the book and are the subject of this paper. Because of the close context of these materials with the much later print-on-demand edition of individual plates first published in *Les Liliacées*, which was an ephemeral project staged by Martin Bossange in Paris, this topic is also discussed in the final chapter of this contribution. Additionally, several letters, all referring to *Les Liliacées* and also kept in the CJBG, have been traced by the third author who analyzed their contents and correlated it with the pictorial record.

It should be noted that the number of names validated in *Les Liliacées* is small and only a fraction of them survived the test of time. However, among them we find well known plants like *Anigozanthos flavidus* Redouté and *Tulipa clusiana* Redouté. *Les Liliacées* included a few names which are not

associated with an illustration and these are also discussed here. An Appendix lists the historical and current names of the plants illustrated on tab. 1–240 and 481–486 of *Les Liliacées*.

Les Liliacées

Les Liliacées is probably best understood as a miscellany of texts and illustrations on petaloid monocots with the character of a loose-leaf collection. There is no pattern or logic from the botanical point of view throughout the whole project, in addition there are several redundancies in the species treated and depicted. Though the title is an excellent one it covers only part of the contents. In actual fact *Les Liliacées* deals with species belonging to plant families which even at that time were not considered to belong to the lily family. Taking into account modern taxonomic concepts, the following families are regarded as being represented in the great work: *Alstroemeriaceae*, *Amaryllidaceae*, *Asparagaceae*, *Asphodelaceae*, *Bromeliaceae*, *Butomaceae*, *Cannaceae*, *Colchicaceae*, *Commelinaceae*, *Haemodoraceae*, *Heliconiaceae*, *Hyppoxidaceae*, *Iridaceae*, *Liliaceae*, *Marantaceae*, *Melanthaceae*, *Musaceae*, *Orchidaceae*, *Pontederiaceae*, *Strelitziaceae* and *Zingiberaceae*. What is offered in *Les Liliacées* is a cross-section through the diversity of these twenty-one families on a global level, with species from all five continents covered. One motive for the project was the limited chance of producing an adequate herbarium record, in particular concerning flower form and colour, with the result that illustrations that are very true to nature were included which could serve in lieu of specimens. An additional motive was probably the considerable popularity of these plants among horticulturalists, the ease with which many of them can be cultivated and the sheer splendour of their flowers. One consequence of this approach is the fact that very often the reader is kept largely uninformed about the provenance of the specimen depicted, another that an indication of the place where they had been cultivated is mostly missing. From a modern perspective all these may be regarded as shortcomings, but Redouté was not a plant taxonomist and appears to have intended to produce a book of the highest standards which would also sell — and sell in the luxury sector of the market. Clearly these were entrepreneurial decisions taken by Redouté whose name and address appears on the title pages of all eight volumes.

Published in 80 instalments, each volume of *Les Liliacées* consists of (1) title matter; (2) text, i.e., plant descriptions and associated notes, all printed on unnumbered pages; (3) illustrations, i.e., colour stipple engravings, all numbered in a single series and printed on separate sheets; (4) and indices. While the undated “Discours préliminaire” included in the first volume is clearly authored by Redouté though his name does not appear at the beginning nor at its end, authorship of the text is a much more complex matter. The standard bibliographies (PRITZEL, 1872–1877; STAFLEU & COWAN, 1983)

agree that the plant descriptions published in the volumes 1–4 are by Augustin-Pyramus de Candolle (1778–1841), those in volumes 5–6 by François Delaroche (1780–1813) and in volumes 7–8 by Alire Raffeneau-Delile (1778–1840). Admittedly, there are a few exceptions, e.g., the last instalment of *Les Liliacées* contains six entries marked ‘D.C.’ standing again for Candolle (see below for further details). However, a deviant opinion has been expressed in an obituary (DESVAUX, 1814) which states that Delaroche is the author of the plant descriptions published in the last three volumes. Considering that this text appeared in late 1814, its author must have referred to volumes 5–7 since the publication of the last volume had not yet been completed at that moment. Desvaux’s statement is confirmed upon reading the correspondence of Delaroche with Candolle (AdC: Can.1.1.1/704). The former collaborated with Redouté until his death on December 23, 1813. It was therefore Delaroche, who authored all plant descriptions in volume 7 with the last instalment published on December 24 (STAFLEU & COWAN, 1983: 627), a day after he had died. Raffeneau-Delile then took over only for volume 8 published between May 1814 and September 1815. In a letter to Candolle dated 4 August 1814, Raffeneau-Delile wrote from Paris “c’est moi qui rédige pour Redouté le texte des liliacées [I am writing the text of *les Liliacées* for Redouté]” (CJBG: Can.1.1.1/1028). This is new evidence correcting the established view on the authorship of the plant descriptions published in *Les Liliacées*.

In marked contrast to the question of authorship, all the colour stipple engravings included in *Les Liliacées* are based on watercolours by Pierre-Joseph Redouté. There is a single exception, i.e., tab. 187, which illustrates a specimen of *Pancratium croceum* Savigny (now *Stenomesson flavum* (Ruiz & Pav.) Herb., *Amaryllidaceae*) and is based on a drawing by Gérard van Spaendonck (1746–1822) kept in the Collection des vélins (Portefeuille 19: f. 69) preserved in the Bibliothèque centrale of the MNHN in Paris. While the name of the respective engraver is consistently given in the right-hand lower corner of the print in *Les Liliacées*, we are totally uninformed about the name of the respective printer, apart from the fact that he worked for Didot le Jeune, i.e., Pierre-Nicolas-Firmin Didot (1769–1836), in Paris. For further background information on *Les Liliacées*, in particular on anomalies, archaisms and occasional observational errors in the illustrations, see the in-depth treatment (LACK et al., 2024: 275–309).

Between July 1802 and November 1808 and again in September 1815, Candolle wrote the descriptions of 252 species while Redouté illustrated all of those except tab. 187 and the eight that were described without being illustrated in an engraving, i.e., *Galaxia ramosa* Redouté in vol. 1 (sub tab. 41, now *Ixia monadelphica* D. Delaroche, *Iridaceae*), *Hypoxis caeruleascens* Redouté and *H. tridentata* Redouté (both now *Pauridia capensis* (L.) Snijman & Kocyan, *Hypoxidaceae*) in vol. 3 (sub tab. 169), and *Narcissus aureus* DC., *N. cantabricus* DC., *N. coornei* DC.,

N. cyclamineus DC., and *N. coronatus* DC. (*Amaryllidaceae*) in vol. 8 (sub tab. 486, for modern names see below).

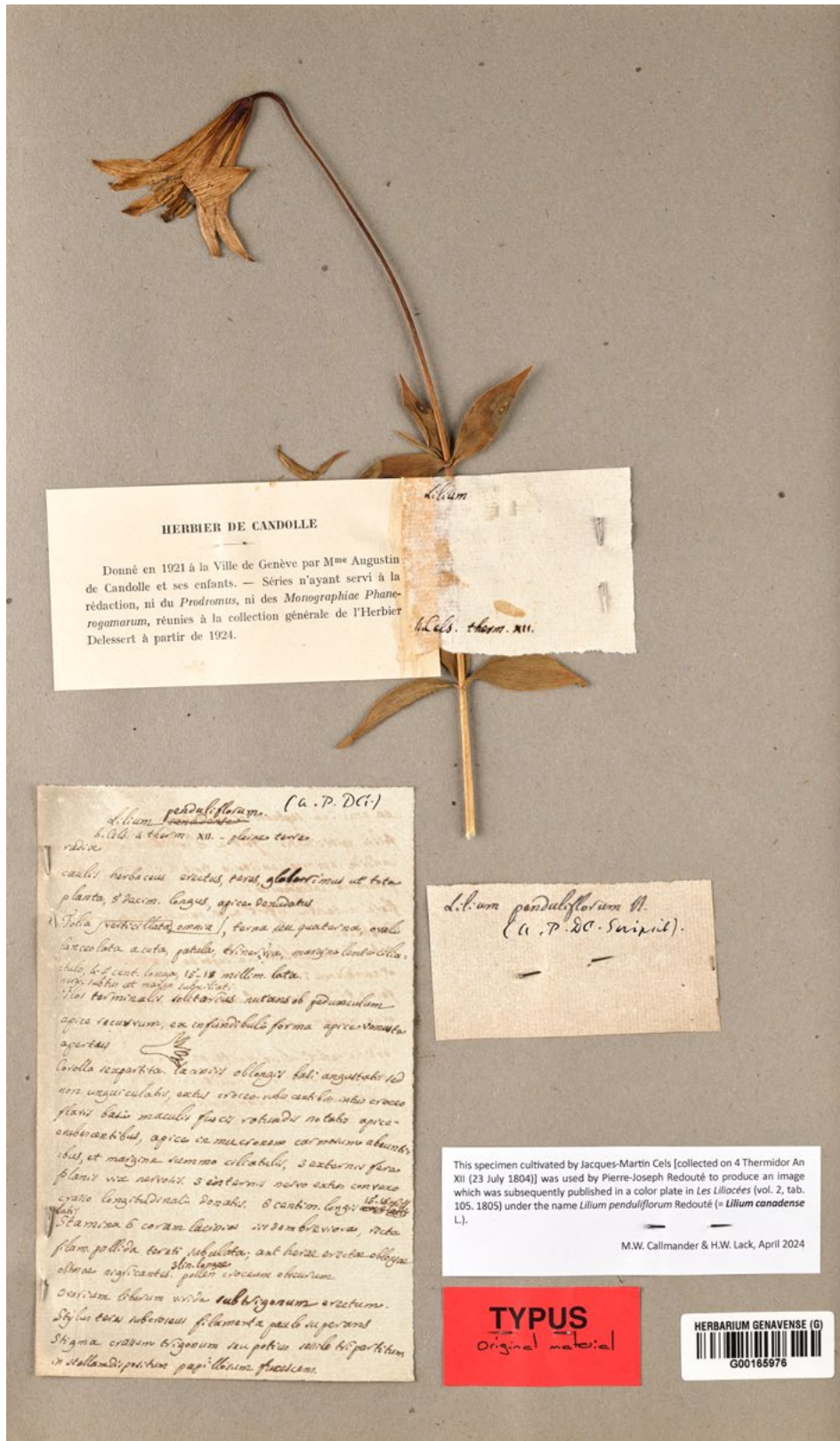
A total of 39 new names for species (incl. a single illegitimate name), a new superfluous name and 5 new combinations were formed by Candolle. The names validated in the first four volumes must be attributed to Redouté because his name appears on the title page while Candolle’s did not (see TURLAND et al., 2018: Art. 46.8; LACK et al., 2024: 309). In contrast, the seven names published in the last instalment in 1815 have to be attributed to Candolle because of the clear evidence of his authorship expressed by the note ‘D.C.’ after the descriptions (TURLAND et al., 2018: Art. 46.8) (see Appendix for a complete list of names).

The fragmentary herbarium record

In the ideal world the living plant specimen depicted by an illustrator is permanently preserved in a herbarium and annotated as having served as exemplar for this very purpose. In the real world this is rarely the case and clearly neither Redouté nor the three authors responsible for the plant descriptions did subscribe to any protocol in this respect. As a consequence, the herbarium record for *Les Liliacées* is extremely fragmentary. It was Candolle who kept a small number of specimens for his herbarium and the same may be the case for Delaroche and Raffeneau-Delile. However, in this paper only the few extant specimens referring to Candolle’s part of *Les Liliacées*, i.e., tab. 1–240, 481–486 are listed (see Appendix) and discussed.

A good example is a specimen of *Lilium canadense* L. (Fig. 1, sub *L. penduliflorum* Redouté), which may have served as the basis for Redouté’s watercolour (MALLARY & MALLARY, 1986: 94, fig. 193). This specimen is dated 4 Thermidor An XII (23 July 1804), while the colour stipple engraving based on it, tab. 105 (Fig. 2), appeared in the instalment 18 of *Les Liliacées* published in January 1805. Several similar examples have been found, e.g., the specimen of *Allium carolinianum* Redouté collected on 3 Fructidor An XII (21 Aug. 1804) which is eligible as lectotype for this name because it was collected before the pertinent protologue appeared in instalment 17 of *Les Liliacées* in November 1804. However, this does not mean that the lectotypification based on the colour stipple engraving (SHARMA et al., 2021) can be superseded, particularly as the illustration is an element of the protologue. As a matter of fact, this is a good example of the complexities involved in selecting lectotypes for names validated in *Les Liliacées*.

Most of the herbarium specimens now at G that were the basis on which Candolle described the plants depicted by Redouté in *Les Liliacées* are annotated as having originated from the “serre chaude [warm greenhouse]” of the Jardin des plantes in Paris. Several of those even bears the registration number, e.g., “h. pl. 410” for *Gladiolus undulatus* L. (G [G00341959]) published as tab. 122 in the third volume. In a single case, that of *G. brevifolius* Jacq. (sub *G. orobanche*



HERBIER DE CANDOLLE

Donné en 1921 à la Ville de Genève par M^{me} Augustin de Candolle et ses enfants. — Série n'ayant servi à la rédaction, ni du *Prodrômus*, ni des *Monographiae Phanerogamarum*, réunies à la collection générale de l'Herbier Delessert à partir de 1924.

Lilium

Lilium penduliflorum

Lilium penduliflorum. (A. P. DC.)
 h. Cels. à Therm. XII. - plaine de Cels
 radice

caulis herbaceus erectus, basi glaberrimus et tota planta, s. racem. longis, apice dentatis

Folia verticillata, ovata, terna seu quaternata, basi lanceolata acuta, petiolo brevissimo, margine lacinulato. Stipulae hinc cent. longae, 15-18 millim. latae, nerv. medio et marg. serratis

Flor. terminalis, solitaria, nuda et perianthium apice recurvum, ex infundibulo forma apice recurvum apertum

Corolla sexpartita. lacini oblongi basi angustati sed non unguiculati, ciliis ciliis nuda subla. nuda croceo flavo basi maculis fuscis rotundis notatis apice emboventibus, apice immixtae corollae abundantibus, et margine summo ciliatis, 3 exterioribus floris

filamentis brevibus, 3 interioribus nervis extra convexo crasso longitudinali dorsali, 8 centim. longis, 1/2 centim. latissimis

Stamina 6 coram lacini in dem breviora, nuda filam. pallida toris, subulata, ant. horae erectae obliquae, lobis angustatis, pollen crassum obtusum

Ovarium liberum vix subligonum erectum. Stylus totus subovatus filamento paulo superant

Stigma crassum bispinum in partem subbipartitum in stigmatibus papillae fuscis

Lilium penduliflorum L.
 (A. P. DC. Scripsit)

This specimen cultivated by Jacques-Martin Cels [collected on 4 Thermidor An XII (23 July 1804)] was used by Pierre-Joseph Redouté to produce an image which was subsequently published in a color plate in *Les Liliacées* (vol. 2, tab. 105, 1805) under the name *Lilium penduliflorum* Redouté (= *Lilium canadense* L.).

M.W. Callmänder & H.W. Lack, April 2024

TYPUS
 Original material

HERBARIUM GENAVENSE (G)
 G00165976

Fig. 1. – Original material of *Lilium penduliflorum* Redouté (now *L. canadense* L.) cultivated in the garden of Cels in Paris, dated 23 July 1804. [Anon. s.n., G00165976; Conservatoire et Jardin botaniques de Genève]



Fig. 2. – Colour stipple engraving of *Lilium canadense* L. (sub *L. penduliflorum* Redouté) based on P.-J. Redouté. [Redouté, *Les Liliacées*, vol. 2: tab. 105, 1805; Conservatoire et Jardin botaniques de Genève, Bibliothèque]

Redouté) appearing in volume three as tab. 125, we know that the living plant originating from the greenhouse in Paris was described by Candolle “chez Redouté”. This statement indicates that the specimen was described and depicted by the botanist and the illustrator at the same place, possibly Redouté's studio.

In a letter from Delaroche to Candolle dated 22 March 1809, we can clearly see the difficulties encountered by Redouté when working only with a herbarium specimen as his exemplar. “Je commence à être dégoûté des descriptions faites sur le sec. Elles renferment presque nécessairement des erreurs et j'ai vu avec chagrin que Mr Redouté s'est trompé bien souvent dans les couleurs avec lesquels il a représenté les fleurs, de manière que ses planches sont en contradiction avec le texte pour lequel je me suis guidé sur les descriptions des auteurs. Il a fait rouge ce qui devait être noir ou bleu, jaune ce qui devait être rose. [I am beginning to become disgusted with the descriptions made from dried [plant material]. They almost necessarily contain errors, and I have seen with sorrow that Mr. Redouté has very often made mistakes in the colours with which he has represented the flowers, so that his plates are in contradiction with the text for which I have guided myself on the authors' descriptions. He has made red what should be black or blue, yellow what should be pink.]” (AdC: Can.1.1.1/704). The key point here is, however, the fact that Delaroche (and apparently also Candolle and Raffeneau-Delile) made sure that such incorrect illustrations were not worked up into colour stipple engravings.

It seems logical that the creation of depictions based on living plant specimens was not always possible depending on the seasons and the availability of flowering specimens. In another letter from Paris dated 3 June 1811, Delaroche keeps Candolle informed about his progress with *Les Liliacées*. He explained that a journey to Flanders had been cancelled because Redouté was too occupied in Paris, but very interestingly he goes on to mention that “nous aurons heureusement assez de plantes, dont un grand nombre fort belles pour aller jusqu'à l'année prochaine [fortunately, we will have enough plants, many of them very beautiful, to see us through to next year]” (AdC: Can.1.1.1/704). Those plants may well have been dried during the blooming season to be depicted and described later in the year.

In a single case the clear-cut note “dessiné” in Candolle's hand has been found on a label associated with a specimen of *Tulipa clusiana* Redouté (Fig. 3). This refers to a watercolour (MALLARY & MALLARY, 1986: 97, fig. 198) which served as the basis for the colour stipple engraving tab. 37 in the first volume of the great work.

A Narcissus drawing by Pierre-Joseph Redouté

No eye witness report exists as to how Pierre-Joseph produced his plant illustrations. We may hypothesize that he first produced a very precise drawing as a first step and then

produced a finished watercolour, but admittedly we have no hard evidence for this. For *Les Liliacées* there is a straightforward fact: although they are now widely scattered, all the watercolours were painted on vellum, while the drawings may have been prepared on paper. However, there is a complication: apart from a single drawing that shows flower details, i.e., an analysis, as far as *Les Liliacées* is concerned, all the other drawings are currently untraceable. This drawing in pencil and grey wash shows the style, the ripe capsule and the seeds of *Tigridia pavonia* (L. f.) Redouté and is kept in the Hunt Institute for Botanical Documentation in Pittsburgh, PA (Acc. No. 2067.07; facsimile LAWALRÉE, 1971: 2). The pertinent watercolour, which is provided with a frame and signed by Redouté but does not include these details, is kept in the Derby Collection, Knowsley Hall, Prescot, near Liverpool, Merseyside. It served together with the Pittsburgh details as the exemplar for the colour stipple engraving tab. 5 included in the first volume of *Les Liliacées*. The key point in our context is the fact that the Knowsley Hall watercolour is on vellum, while the Pittsburgh drawing is on paper.

In this context a newly discovered drawing, again in pencil and grey wash, is of interest. It shows *Narcissus triandrus* subsp. *pallidulus* (Graells) Rivas Goday (Fig. 4A) and was found bound into the second volume of *Les Liliacées* kept at the CJBG after tab. 177 representing *N. calathinus* L. (now *N. triandrus* L.). This drawing was sent to Candolle by Delaroche in 1813 who wrote “Je vous prierai de me rendre un service. C'est de comparer la figure de narcisse que je vous enverrai par courrier avec les individus que vous avez dans votre herbier du narcissus calathinus afin de décider si c'est ou non la même espèce [Please do me a favour. It is to compare the narcissus figure I will send you by mail coach with the individuals you have in your herbarium of *Narcissus calathinus*, in order to make the decision as to whether or not it is the same species]” (AdC: Can.1.1.1/704). Significantly this drawing is on paper, but is neither signed nor dated, neither of which would be expected for such an intermediate stage in the production process. A comparison of the anonymous drawing with the colour stipple engraving showing this narcissus based on a watercolour by Redouté (MALLARY & MALLARY, 1987: 113, fig. 238) indicates that the drawing is by Redouté or, alternatively, by an assistant based on the watercolour by Redouté. The second interpretation may be seen in the context of Delaroche's letter: sending a precious watercolour from Paris to Candolle in Montpellier would have to be regarded as risk-taking. The pertinent stipple engraving tab. 410 (Fig. 4B) is included in the seventh volume of *Les Liliacées*, published in November 1813. It is therefore not surprising that Delaroche recognized that these two illustrations, i.e., the drawing, subsequently published as tab. 410 and tab. 177, were actually of the same species and requested confirmation of that from Candolle.

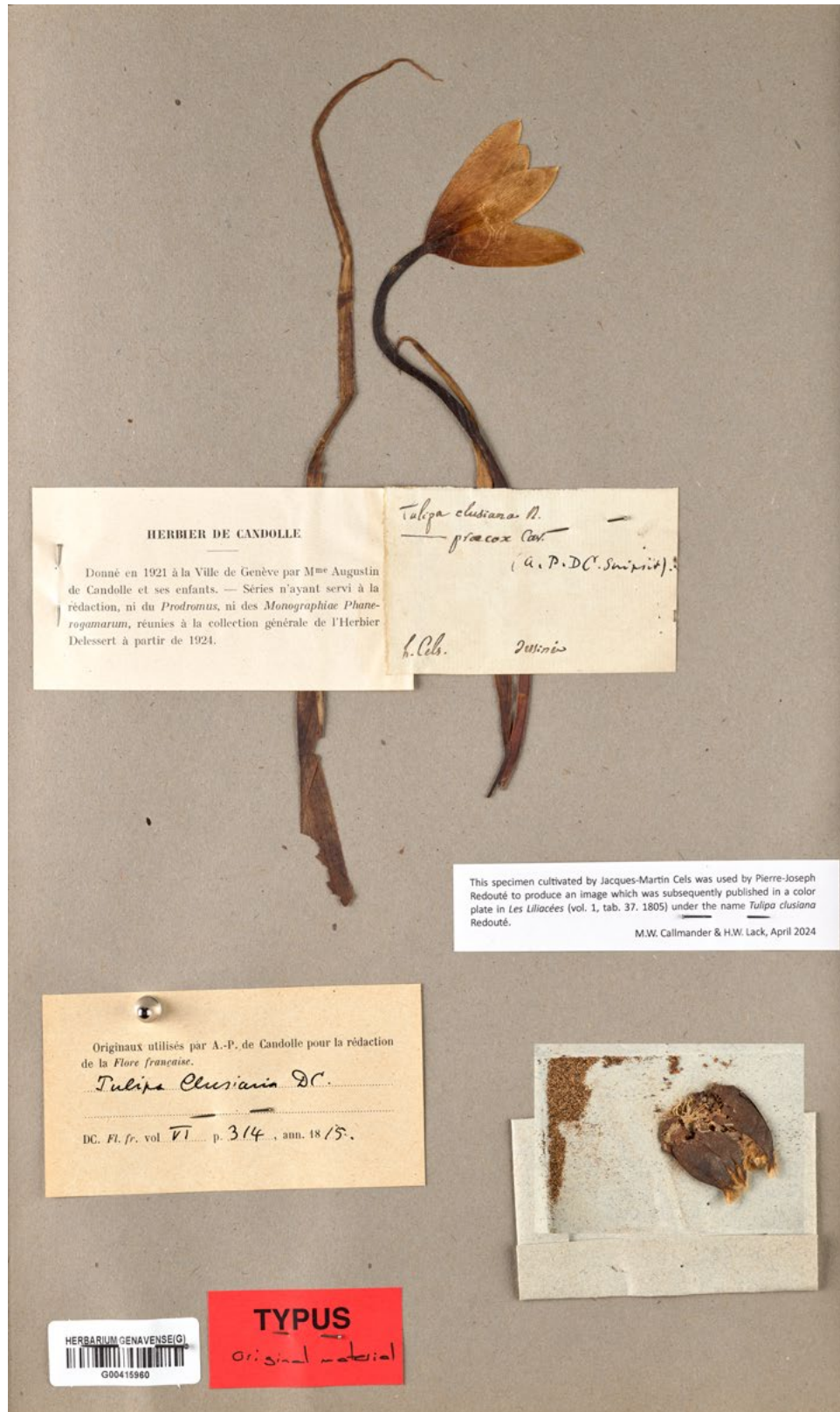


Fig. 3. – Original material of *Tulipa clusiana* Redouté cultivated in the garden of Cels in Paris with the note “dessiné” in A.-P. de Candolle’s hand. [Anon. s.n., G00415960; Conservatoire et Jardin botaniques de Genève]



Fig. 4. – *Narcissus triandrus* subsp. *pallidulus* (Graells) Rivas Goday. **A.** Drawing by P.-J. Redouté or based on P.-J. Redouté, undated, bound into A.-P. de Candolle's copy of *Les Liliacées*; **B.** Colour stipple engraving based on P.-J. Redouté in *Les Liliacées*, vol. 7: tab. 410, 1813. [Conservatoire et Jardin botaniques de Genève, Archives and Bibliothèque]

Delaroché further asked Candolle to check the synonymy for his *Narcissus calathinus* (now *N. triandrus*, see above) ["Je vous prierai aussi de vérifier la synonyme de Rudbeck"] explaining the pencil note 'Rudb. 2 p. 60 f. 5' in Candolle's hand on the back of this drawing. This is a reference to the second volume of the *Campi Elysii* by Olov Rudbeck the father (1630–1702) and Olov Rudbeck the son (1660–1740), both professors at Uppsala University and directors of the botanic garden; it was published in Uppsala in 1701. This is an exceedingly rare book, since the greater part of the print run of this volume, which had been stored in Uppsala cathedral was destroyed in the infamous fire of 16 May 1702 which annihilated large parts of the town. It has been reported that only six copies of the second volume survived (WILLDENOW, 1791: 420; for further details WIKSTRÖM, 1831: 226). One of these copies is now in the Kungliga biblioteket in Stockholm (shelf mark 1700–1829 82 Aa 396/2-4), another one in the Österreichische

Nationalbibliothek in Vienna (shelf mark 180.288 E-2; LACK, 2001). No copy is known to exist in Paris. It remains unknown in which library it may have been where Candolle consulted a copy, possibly it was in a private one, but he found on p. 60 f. 5 an anonymous woodcut associated with the name "*Narcissus angustifolius flavus magno calice*" which is not a good match for the plant depicted in the drawing which more closely resembles a hybrid with *N. tazetta* L. as one parent. This mismatch may explain the uncertainty raised by Delaroché and was the reason why Candolle rather surprisingly placed *N. calathinus* in his *Narcissus* sect. *Tazettae* DC. (CANDOLLE, 1815: 324). It merits attention that Delaroché clearly referred to Rudbeck's illustration in his comments on tab. 410.

Black proofs of the stipple engravings

There is also no eyewitness report as to how the engraving work was done for *Les Liliacées*. For his project Redouté had chosen stipple engraving as the technique in which a special device and not the burin is used to produce dot-like impressions in the polished copper plate. In other words, the image on the plate consists of numerous dots, not lines with the result that sublime nuances can be achieved. The dots are best visible when the respective image is enlarged (which has been done for several illustrations in an exemplary fashion in REDOUTÉ, 2000). The tool is a small turning wheel with steel tips, called the roulette, which is affixed to a handle. For the production of a print the engraved plate is first covered with printer's ink, which is then very carefully wiped out with the result that the printer's ink remains only in the dot-like impressions. As the final step a sheet of paper was placed on the plate and both were passed through the printers' press.

Taking black proofs was a standard procedure in order to control the quality of the engraver's work and to enable improvements. Such proofs were often taken before the letterpress was added, i.e., the scientific name of the plant, the names of the illustrator and the engraver and the plate number, and are therefore known as *avant la lettre* proofs. A few such proofs have been found in the archives of the CJBG (Can.1.6.1), e.g., a black *avant la lettre* proof of the stipple engraving showing *Albuca abyssinica* Jacq. On the verso of this proof we find a pencil annotation in Redouté's hand reading "M. Redouté a l'Honneur de saluer M. La Roche il sera chez Lui aujourd'hui a 4 h [Mr. Redouté takes pleasure to greet Mr. La Roche, he will visit him today at 4 o'clock]". Since the colour print taken from the pertinent engraving is tab. 195 of *Les Liliacées* and was included in the fourth volume of this work, the note seems to indicate that Delaroche was also involved in the production of this volume.

Less conventional is a black pull taken from an incompletely engraved copper plate documenting *Lilium bulbiferum* L. (Fig. 5A) This is based on one of Redouté's watercolours (MALLARY & MALLARY, 1987: 94, fig. 193) and carries on the verso the note in black ink "je laisse a M. Decandolle un epreuve sans etre achevée du Lis [I leave an unfinished proof of the lily to Mr. Decandolle]" written in Redouté's hand. On this pull the function of the small wheel with its steel tips is easily discernable. When the engraver's tool is moved over the polished copper plate, the steel tips produce at regular intervals tiny, dot-like impressions. When these are filled with black printer's ink and the engraved plate is wiped clean, the print will show a line of black dots at a regular interval. The finished engraving plate served for the production of the colour stipple engraving tab. 210 (Fig. 5B) which was included in volume four.

It was standard practice that the illustrator kept a critical eye on the work of the engraver by signing off engravings which have passed the test of his acceptance. Redouté acted likewise

and signed a black proof for tab. 50 which was to go into his *La botanique de Rousseau* in the lower right-hand corner; this black proof is also kept in the archives of the CJBG.

Colour proofs of the stipple engravings

No eyewitness report either exists for the subsequent printing process. However, it is evident that producing colour stipple engravings involves much more tedious work for the printer. Firstly, he has to apply printer's inks of different colours to the engraved plate; secondly, he has to precisely memorize which part of the engraved plate receives which kind of colour; and thirdly, he has to be extremely careful in wiping clean the plate avoiding the mixing of different colours. As a consequence, colour proofs of stipple engravings make sense and indeed a small number referring to *Les Liliacées* has survived in the archives of the CJBG. It seems that the virtual lines separating the different areas on the engraved plate which were to receive differently coloured printer's inks caused some problems — they were difficult to memorize. A proof of the colour stipple engraving showing *Moraea vegeta* L. (sub *M. sordescens* Jacq., Fig. 6A) based on Redouté's watercolour (MALLARY & MALLARY, 1987: 193, fig. 423) demonstrates precisely this problem. The brown and the green of the fruits differ in the colour proof from the final colour print (Fig. 6B), which was included as tab. 71 in the second volume of *Les Liliacées*.

Candolle's copy of Les Liliacées

Candolle's copy of *Les Liliacées* is kept in the library of the CJBG (shelfmark Of Red). It does not contain annotations by his hand and belongs to the standard edition which is known to have been produced in a print run of 280 copies (STAFLEU & COWAN, 1983: 627). In the unpublished catalogue of his library "Catalogue des Livres acquis ou reçus jusqu'au 1^{er} juillet 1820 [Catalogue of books acquired or received until 1 July 1820]" kept in the archives of the CJBG Candolle lists his copy of *Les Liliacées* under the heading "Troqué ou pay.m [payments] d'ouvrages [exchange or payment of works]" with "2000 [francs]" added. This may be the purchase price Candolle had paid or the estimated value of the acquisition of it on the market. In any case Candolle had not received the eight volumes as a gift from Redouté because he would have made a note of that fact in this catalogue. Considering that *Les Liliacées* was intended for the luxury market all this is hardly surprising.

The number of copies of *Les Liliacées* produced on large paper is much smaller and has been given as eighteen (STAFLEU & COWAN, 1983: 627), among them the copy in the Lindley Library in London (shelf mark 930 LIL RED). Even rarer are copies which contain all 496 stipple engravings in two states — printed in black on ochre paper and printed in colour on white paper. Two copies of this variant are kept in the New York Public Library in New York (shelf mark *KF



Fig. 5. – *Lilium bulbiferum* L. **A.** Black proof taken from an unfinished engraved plate based on P.-J. Redouté in the *avant la lettre* stage; **B.** Colour stipple engraving based on P.-J. Redouté in *Les Liliacées*, vol. 4: tab. 210, 1808. [Conservatoire et Jardin botaniques de Genève, Archives and Bibliothèque]

+++ 1805 83–79) and in the Peter Raven Library, St Louis, MO (shelf mark QK495.F38 R32) respectively; both are available online. One further copy bound in red morocco is at the Morgan Library & Museum in New York (shelf mark PML 45387-94).

Candolle's input into Les Liliacées after 1808

In early 1808, when Candolle took over the botany chair at the medical faculty of Montpellier University (BUNGENER et al., 2017), his Genevan friend Delaroche took over *Les Liliacées* in Paris. Three years separated the two and they knew each other from their early days as students (see LACK et al., 2024). Nine letters from Delaroche to Candolle spanning from 1804 to 1813 are kept in the Archives de Candolle in Geneva. They are wrapped in a paper where Candolle wrote “correspondance

avec François De la Roche mon premier disciple et mon ami mort en 1813 à l'âge de 26 ans [correspondence with François De la Roche, my first disciple and my friend who died in 1813 at the age of 26]”. It is clear from this correspondence that Candolle never really stopped collaborating with his friend on *Les Liliacées*. An interesting example is mentioned in a letter dated 31 March 1812 where Delaroche wrote: “Je vous remercie beaucoup de votre description du Gladyeul qui paroitra dans la prochaine livraison des Liliacées [I thank you very much for your description of the *Gladiolus*, which will appear in the next instalment of *les Liliacées*]” (AdC: Can.1.1.1/704). Delaroche was referring to *Gladiolus tubiflorus* L. f. which appeared in volume seven tab. 364 published on 3 July 1812 where he wrote “Nous le décrivons du Jardin de Montpellier, où il fleurit dans les premiers jours de mai [We describe it from the Jardin de



Fig. 6. – *Moraea vegeta* L. A. Colour proof taken from engraved plate based on P.-J. Redouté in the avant la lettre stage; B. Colour stipple engraving based on P.-J. Redouté in *Les Liliacées*, vol. 2: tab. 71, 1804. [Conservatoire et Jardin botaniques de Genève, Archives and Bibliothèque]

Montpellier, where it blooms in the first days of May]”. The herbarium specimen with a description in Candolle’s hand is extant in G [G00640071] and was collected in the Jardin de Montpellier on 19 May 1810.

Candolle on *Narcissus*

Another example of Candolle’s involvement in *Les Liliacées* after he moved to Montpellier can be found in his interest in the genus *Narcissus* L., which has to be seen in the context of his later work for the *Flore Française* (CANDOLLE, 1815). Raffeneau-Delile enumerated in a letter to Candolle dated 2 August 1814 all the corrections that must be made for the three *Narcissus* species described in instalment 72, i.e., tab. 427–429. “Voici les erreurs que nous allons corriger et que je viens de m’entendre avec Redouté chez lui [Here are the

errors that we are going to correct and that I have just agreed with Redouté at his place]” (CJBG: Can.1.1.1/1028). Raffeneau-Delile further requested the description of a *Narcissus* engraved with the name *N. intermedius* Loisel. but representing “*Narcissus tazetta* var. *flavescens*” or “*Narcisse tazetta* var. *jaune pale*” according to Candolle. Raffeneau-Delile asked the latter to send him the description “Redouté n’en trouve pas la description et vous prie de la lui envoyer [Redouté cannot find a description of it and asks you to send it to him]”. This engraving carries the names of Redouté and the engraver, but lacks the plate number and was never published. Two copies are kept in the archives of the CJBG (Can.1.6.1) with a note in Raffeneau-Delile’s hand mentioning that Candolle “empêcherait Redouté de perdre la planche faite [prevents Redouté from losing the prepared engraving]” (Fig. 7). The three her-

barium specimens that link to tab. 427–429 are still extant in G, respectively G00341997, G00341979, and G00342000. A total of 23 *Narcissus* species were depicted in the eight volumes of *Les Liliacées* (Table 1). Seven of these were described as new to science but only two names are still in use today, i.e., *N. cantabricus* and *N. cyclamineus*, both validated by Candolle in the text accompanying tab. 486 in the last instalment of *Les Liliacées* (see above). No original material for these two names has been located in G and their typifications have been dealt with by AEDO (2010).

The foundations for the current generic subdivisions of *Narcissus* as recognised in large part by subsequent monographers, were laid out by Candolle in September 1815 in the “Observations” in volume 8 of *Les Liliacées* sub. tab. 486. The five sectional names validated in that work, listed by Candolle

and still accepted today are: *Narcissus* sect. *Bulbocodii* DC., sect. *Cyclaminei* DC., sect. *Jonquillae* DC., sect. *Pseudonarcissi* DC. and sect. *Tazettae*. The sixth sectional name sect. *Poetici* DC. is now correctly *Narcissus* sect. *Narcissus* (TURLAND et al., 2018: Art. 22.1).

Lamarck and his co-author Candolle had initially included five species of *Narcissus* in tome 3 of the so-called “troisième édition” of Lamarck’s *Flore française* (LAMARCK & CANDOLLE, 1805: 230–232). The species included were *N. poeticus* L., *N. pseudonarcissus* L., *N. bulbocodium* L., *N. tazetta* and *N. jonquilla* L., all forming the sections that Candolle initiated later. These authors added as sixth species *N. odorus* in their *Synopsis plantarum in flora Gallica descriptarum* a year later (LAMARCK & CANDOLLE, 1806: 165). The description of *N. odorus* and the illustration in the *Botanical Magazine*

Table 1. – List of *Narcissus* L. names used on the engravings published in the eight volumes of *Les Liliacées* from 1802 to 1815 with their associated specimens conserved at G.

Vol.	Tab.	Year	Name published in <i>Les Liliacées</i>	Current accepted name	Specimen at G
1	17	1802	<i>Narcissus tazetta</i> L.	<i>Narcissus tazetta</i> subsp. <i>aureus</i> (Haw.) Baker	
1	24	1803	<i>Narcissus bulbocodium</i> L.	<i>Narcissus bulbocodium</i> L.	
3	157	1806	<i>Narcissus odorus</i> L.	<i>Narcissus xodorus</i> L.	G00341957
3	158	1806	<i>Narcissus pseudonarcissus</i> L.	<i>Narcissus pseudonarcissus</i> L.	G00341999
3	159	1806	<i>Narcissus jonquilla</i> L.	<i>Narcissus jonquilla</i> L.	
3	160	1806	<i>Narcissus poeticus</i> L.	<i>Narcissus poeticus</i> L.	
3	177	1807	<i>Narcissus calathinus</i> Delarbre, nom. illeg.	<i>Narcissus triandrus</i> L. subsp. <i>triandrus</i>	G00341978
4	188	1807	<i>Narcissus candidissimus</i> Desf. ex Redouté	<i>Narcissus moschatus</i> L.	
4	220	1808	<i>Narcissus gouanii</i> Roth	<i>Narcissus xincomparabilis</i> Mill.	G00341998
7	405	1813	<i>Narcissus biflorus</i> Curtis	<i>Narcissus xmedioluteus</i> Miller	
7	409	1813	<i>Narcissus pumilus</i> Redouté	<i>Narcissus dubius</i> Gouan	
7	410	1813	<i>Narcissus calathinus</i> var. B	<i>Narcissus triandrus</i> subsp. <i>pallidulus</i> (Graells) Rivas Goday	
8	427	1814	<i>Narcissus intermedius</i> Loisel.	<i>Narcissus xcompressus</i> Haw.	G00341997
8	428	1814	<i>Narcissus laetus</i> Salisb.	<i>Narcissus xtrilobus</i> L.	G00341979
8	429	1814	<i>Narcissus dubius</i> Gouan	<i>Narcissus dubius</i> Gouan	G00342000
8	459	1815	<i>Narcissus radiatus</i> Redouté	<i>Narcissus xcompressus</i> Haw.	
8	480	1815	<i>Narcissus minor</i> L.	<i>Narcissus minor</i> L.	
8	486	1815	<i>Narcissus tenuifolius</i> Salisb.	<i>Narcissus bulbocodium</i> L.	
8	sub 486	1815	<i>Narcissus aureus</i> DC.	<i>Narcissus bulbocodium</i> L.	
8	sub 486	1815	<i>Narcissus cantabricus</i> DC.	<i>Narcissus cantabricus</i> DC.	
8	sub 486	1815	<i>Narcissus coornei</i> DC.	<i>Narcissus bulbocodium</i> L.	
8	sub 486	1815	<i>Narcissus coronatus</i> DC.	<i>Narcissus triandrus</i> L. subsp. <i>triandrus</i>	
8	sub 486	1815	<i>Narcissus cyclamineus</i> DC.	<i>Narcissus cyclamineus</i> DC.	

(CURTIS, 1790–1791: tab. 78) cited by Lamarck and Candolle, accord with the hybrid *N. ×odorus* L. There is a corresponding herbarium specimen of this hybrid G00341979 collected by Dr [François Paul] Jauvy (1760–1822) near Grasse in 1809 in Candolle's herbarium.

Candolle, as sole author of the reissue of *Flore française*, published a month after the Observations under tab. 486 of *Les Liliacées*, elaborated considerably on the treatment of *Narcissus* by including twenty species in five of the six sections (indicated by the Greek silcrow sign), in tome five of that work (CANDOLLE, 1815: 319–327). The sixth section, i.e., *Narcissus* sect. *Cyclaminei* was not included, probably because with the exception of *N. albus* Mill. (*N. ×medioluteus* Mill.) and *N. cyclamineus* the other four names all referred to what is now considered to be *N. triandrus*. Candolle incorrectly used the name *N. calathinus* to refer to *N. triandrus*, citing the specimen G00341978 collected by Monsieur [Théophile] Bonnemaïson (1774–1829) from the île de Glénan near Brittany. Candolle placed *N. calathinus* in sect. *Tazettae* (CANDOLLE, 1815: 324). *Narcissus cyclamineus* was not included as it is not found in France. Candolle, in the reissue of *Flore française* (CANDOLLE, 1815), was providing species descriptions for those *Narcissus* he had already included in the last instalment of *Les Liliacées* published a month earlier. Several of the species described had been accompanied by engravings based on watercolours by Redouté.

Candolle did not deal with Monocotyledons, and therefore did not provide any treatment for the genus *Narcissus* in either of his more comprehensive works, i.e., the *Regni vegetabilis systemae naturale* nor the *Prodromus systematis naturalis regni vegetabilis*.

The print-on-demand edition of individual illustrations

In 1829, fourteen years after the last instalment of *Les Liliacées* had appeared, an anonymous brochure was published in Paris with the title *Catalogue de 486 Liliacées et de 168 Roses peintes par P. J. Redouté* (ANON., 1829). From the text it becomes evident that the publisher Martin Bossange (1765–1865), a Paris-based dealer in artworks and books, had acquired the engraved copper plates for *Les Liliacées* and *Les Roses* and now offered single prints on demand for customers — colour prints on papier vélin, a good quality white paper, and black prints on coloured paper (LACK et al., 2024: 538). Nothing is known as to when, how and from whom Bossange had acquired the copper plates, but the probable answer is Redouté, who might have been forced to sell them owing to financial losses or his tendency for overspending. Until very recently not a single specimen of this print-on-demand edition was known. Being definitely aimed at the general public, not at botanists, the plant illustrations were not given in the correct hue of colour, which had been a detail that was so important for Redouté, and the flower analyses were also omitted. Bossange's project has gone totally unnoticed in the rich literature on Redouté.

The first author located an engraving showing *Lilium pomponium* L. (Fig. 8A) apparently belonging to this series in the Münch-Bellinghausen collection of botanical illustrations kept in the Haus der Natur in Salzburg (LACK et al., 2025). A comparison of this item with the stipple engraving tab. 7 (Fig. 8B) included in the first volume of *Les Liliacées* merits attention. The print in Salzburg lacks the right-hand detail and the names of the plant, the illustrator and the engraver as well as the plate number. Additionally, the number of stem leaves are reduced, the almost violet colour of the tepals is incorrect, the print is covered by a solid layer of colour in contrast to the transparent colours of the image on tab. 7. The name of the plant is added in black ink and calligraphy in an unidentified hand, while the pencil annotations are in the hand of Konstantin Freiherr von Münch-Bellinghausen (1752–1838), the collector. Miscellaneous colour stipple engravings belonging to this amended print-on-demand edition were also bound together with a modified copy of the frontispiece of *Les Roses* and sold under the title “Album de Redouté” (LACK et al., 2024: 604). From the bound-in preface it is evident that this was a purely commercial venture for Bossange. A tiny number of these albums is known which differ from each other in their composition, but they all have a dedication to the Duchesse de Berry, i.e., Maria Carolina of Bourbon-Two Sicilies (1798–1870). Such albums are known from the Library of Congress, Washington, D.C. (shelf mark ND 1400 R4 fol.) and from two auctions (LEGRAND, 2024). Very recently a copy passed hands at Drouot in Paris with a deviant title page, i.e., with a printed dedication to Madame Gabriel Lucas de Montigny, i.e., Lise de Montigny, née Roland (1784–1856) (LEGRAND, 2024). It goes without saying that these albums were collectors' items and quite irrelevant for botanists. Neither Candolle nor his later colleagues in Geneva seem to have had any interest in them.



Fig. 8. – *Lilium pomponium* L. **A.** Coloured engraving, second state, c. 1829; **B.** Colour stipple engraving based on P.-J. Redouté. [A: MB-230; © Haus der Natur, Botanische Abteilung, Sammlung Münch-Bellinghausen, Salzburg; B: Redouté, *Les Liliacées*, vol. 1: tab. 7, 1802; Conservatoire et Jardin botaniques de Genève, Bibliothèque]

Acknowledgements

The authors would like to thank the whole team of the Library of the Conservatoire et Jardin botaniques in Geneva (CJBG) for their help in various aspects in writing this manuscript. We are especially indebted to the staff that digitise the material in Geneva: Philippe de Candolle and Jean-Philippe Chassot for the material conserved in the Archives de Candolle and in the CJBG (Archives and Library) and Nathalie Rasolofo in the herbarium. We thank the Archives de Candolle in Geneva for the great collaboration in digitalizing the correspondence deposited in their funds. Anne-Christine Tallent (Musée d'Art et d'Histoire in Geneva) for proving a copy of Legrand's article and Denis Lamy for improving an earlier version of this manuscript. Finally the last author thank Max Antheunisse, administrator of the www.plantillustrations.org website, for providing a complete

list of the metadata link to the all the engravings of *Les Liliacées* that greatly help to compile the Appendix.

Unpublished sources

AdC: Archives de Candolle, Genève: Can.1.1.1/704. [<https://archives.cjbg.ch/ark:/13001/vtaefb07d78b040abb6>]

CJBG: Archives, Conservatoire et Jardin botaniques de Genève, Can.1.1.1/1028. [<https://archives.cjbg.ch/ark:/13001/vta58723f-cfc97dbf6a>]

CJBG: Archives, Conservatoire et Jardin botaniques de Genève, Can.1.6.1.

Bibliography

- AEDO, C. (2020). Typification of the names of Iberian accepted species of *Narcissus* L. (Amaryllidaceae). *Acta Bot. Malac.* 35: 133–142.
- ANON. (1829). *Catalogue de 486 Liliacées et 168 Roses peintes par P. J. Redouté*. Paris.
- BUNGENER, P., P. MATTILLE & M.W. CALLMANDER (2017). *Augustin-Pyramus de Candolle. Une passion, un jardin*. Éditions Favre, Lausanne; Conservatoire et Jardin botaniques de Genève, Genève.
- CANDOLLE, A.-P. DE (1815). *Flore française*, vol. 5. Desray, Paris.
- CURTIS, W. (1790–1791). *The Botanical Magazine, or, Flower-garden displayed*, vol. 3–4. Couchman and Fry, London.
- DESVAUX, N.A. (1814). Notice biographique sur M. François de la Roche, Médecin, Membre de la Société Philomatique, etc. *J. Bot. (Desvaux)*, sér. 2, 3: 207–211.
- LACK, H.W. (2001). *Ein Garten Eden. Meisterwerke der botanischen Illustration / Garden Eden Masterpieces of botanical illustration / Un jardin d'Éden. Chefs-d'œuvre de l'illustration botanique*. Taschen, Cologne.
- LACK, H.W., J.A. COMPTON & M.W. CALLMANDER (2024). *The Redouté brothers. Masters of scientific illustration in Paris*. Publications scientifiques du Muséum national d'Histoire naturelle, Paris; Conservatoire et Jardin botaniques de Genève, Genève.
- LACK, H.W., J.A. COMPTON, G. PFLUGBEIL, H. WITTMANN, R. LINDNER (2025). The Münch-Bellinghausen collection of botanical illustrations in the Haus der Natur, Salzburg. *Arch. Nat. Hist.* 51: 87–101.
- LAMARCK, J.B.P.-A. & A.-P. DE CANDOLLE (1805). *Flore française, ou descriptions succinctes de toutes les plantes qui croissent naturellement en France*, Ed. 3, vol. 3. H. Agasse, Paris.
- LAMARCK, J.B.P.-A. & A.-P. DE CANDOLLE (1806). *Synopsis plantarum in flora Gallica descriptarum*. H. Agasse, Paris.
- LAWALRÉE, A. (1971). Pierre-Joseph Redouté – sein Leben und Werk. In: REDOUTÉ, P.J. (ed.), *Faksimile-Drucke von grösstenteils unveröffentlichten Originalbildern von Pierre-Joseph Redouté*: 1–16. Gesellschaft Schweizerischer Rosenfreunde, Rapperswil.
- LEGRAND, C. (2024). *Le plus rare des albums de Redouté*. [<https://www.gazette-drouot.com/article/la-plus-rare-de-albums-de-redoute/52789>]
- MALLARY, P. & F. MALLARY (1986). *A Redouté treasury. 486 watercolours from 'Les Liliacées' of Pierre-Joseph Redouté*. J.M. Dent & Sons, London.
- PRITZEL, G.A. (1872–1877). *Thesaurus literaturae botanicae omnium gentium inde a rerum botanicarum initiis ad nostra usque tempora, quindecim millia operum recensens*, Ed. 2. F. A. Brockhaus, Leipzig.
- REDOUTÉ, P.-J. (1802–1815). *Les Liliacées*. 8 Vol. Chez l'auteur, Paris.
- REDOUTÉ, P.-J. (2000). *The Lilies / Lilien / Les Liliacées*. Taschen, Cologne.
- SHARMA, D., M.D. DWIVEDI, K. UPADHYAY & A.K. PANDEY (2021). Typification of *Allium carolinianum*. *Kew Bull.* 76: 557–563.
- STAFLEU, F.A. & R.S. COWAN (1983). Taxonomic literature. A selective guide to botanical publications and collections with dates, commentaries and types, Ed. 2, vol. 4. *Regnum Veg.* 110.
- STEARNS, W.T. (1981). Redouté's Les Liliacées. In: MATHEW, B. (ed.), *P. J. Redouté, Lilies and related flowers*: 16–20. Felix Gluck Press Ltd., Twickenham.
- TURLAND, N.J., J.H. WIERSEMA, F.R. BARRIE, W. GREUTER, D.L. HAWKSWORTH, P.S. HERENDEEN, S. KNAPP, W.-H. KUSBER, D.-Z. LI, K. MARHOLD, T.W. MAY, J. MCNEILL, A.M. MONRO, J. PRADO, M.J. PRICE & G.F. SMITH (2018). International Code of Nomenclature for algae, fungi, and plants (Shenzhen Code) adopted by the Nineteenth International Botanical Congress Shenzhen, China, July 2017. *Regnum Veg.* 159.
- WIKSTRÖM, J.E. (1831). *Conspectus litteraturae botanicae in Suecia ab antiquissimis temporibus usque ad finem anni 1831, notis bibliographicis et biographicis auctorum adjectis*. Stockholm.
- WILLDENOW, C.L. (1791). *Grundriss der Kräuterkunde zu Vorlesungen entworfen*. Haude & Spener, Berlin.

Appendix – Annotated list of plants names used on the engravings published in the first four volumes of *Les Liliacées* from 1802 to 1808 and in the last instalment of *Les Liliacées* associated with Candolle in 1815 with their pertinent specimens and/or colour proofs preserved in Geneva. Names in bold face were published in *Les Liliacées* as taxonomic novelties.

Vol. Tab.	Year	Family	Name in <i>Les Liliacées</i>	Currently accepted name	Material at G
1 1	1802	Asphodelaceae	Dianella ensifolia (L.) Redouté	Dianella ensifolia (L.) Redouté	
1 2	1802	Asparagaceae	<i>Lachenalia tricolor</i> J. Jacq. ex Murray	<i>Lachenalia aloides</i> (L. f.) Engl.	
1 3	1802	Asparagaceae	<i>Hemerocallis japonica</i> Thunb.	<i>Hosta plantaginea</i> (Lam.) Asch.	
1 4	1802	Amaryllidaceae	<i>Agapanthus umbellatus</i> L'Hér.	<i>Agapanthus africanus</i> (L.) Hoffmanns.	
1 5	1802	Amaryllidaceae	<i>Amaryllis formosissima</i> L.	<i>Sprekella formosissima</i> (L.) Herb.	
1 6	1802	Iridaceae	Tigridia pavonia (L. f.) Redouté	Tigridia pavonia (L. f.) Redouté	
1 7	1802	Liliaceae	<i>Lilium pomponium</i> L.	<i>Lilium pomponium</i> L.	
1 8	1802	Amaryllidaceae	<i>Pancratium maritimum</i> L.	<i>Pancratium maritimum</i> L.	
1 9	1802	Amaryllidaceae	<i>Amaryllis reginae</i> L.	<i>Hippeastrum reginae</i> (L.) Herb.	
1 10	1802	Amaryllidaceae	<i>Amaryllis vittata</i> L'Hér.	<i>Hippeastrum vittatum</i> (L'Hér.) Herb.	
1 11	1802	Iridaceae	<i>Gladiolus merianus</i> (L.) Thunb.	<i>Watsonia meriana</i> (L.) Miller	
1 12	1802	Iridaceae	<i>Antholyza cunonia</i> L.	<i>Gladiolus cunonius</i> (L.) Gaertner	
1 13	1802	Liliaceae	<i>Helonias bullata</i> L.	<i>Helonias bullata</i> L.	
1 14	1802	Liliaceae	<i>Hyacinthus amethystinus</i> L.	<i>Brimeura amethystina</i> (L.) Chouard	
1 15	1802	Asphodelaceae	<i>Hemerocallis flava</i> (L.) L.	<i>Hemerocallis lilioasphodelus</i> L.	
1 16	1802	Asphodelaceae	<i>Hemerocallis fulva</i> (L.) L.	<i>Hemerocallis fulva</i> (L.) L.	
1 17	1802	Amaryllidaceae	<i>Narcissus tazetta</i> L.	<i>Narcissus tazetta</i> subsp. <i>aureus</i> (Haw.) Baker	
1 18	1802	Iridaceae	<i>Iris susiana</i> L.	<i>Iris susiana</i> L.	
1 19	1803	Orchidaceae	<i>Cypripedium calceolus</i> L.	<i>Cypripedium calceolus</i> L.	
1 20	1803	Orchidaceae	<i>Cypripedium flavescens</i> A. DC.	<i>Cypripedium parviflorum</i> Salisb.	
1 21	1803	Asparagaceae	<i>Albuca minor</i> L.	<i>Albuca canadensis</i> (L.) F.M. Leight.	
1 22	1803	Asparagaceae	<i>Lachenalia pallida</i> Sol.	<i>Lachenalia pallida</i> Sol.	
1 23	1803	Iridaceae	<i>Iris florentina</i> L.	<i>Iris florentina</i> L.	
1 24	1803	Amaryllidaceae	<i>Narcissus bulbocodium</i> L.	<i>Narcissus bulbocodium</i> L.	
1 25	1803	Colchicaceae	<i>Merendera bulbocodium</i> Ramond	<i>Colchicum montanum</i> L.	
1 26	1803	Colchicaceae	<i>Methonica superba</i> (L.) Crantz	<i>Gloriosa superba</i> L.	
1 27	1803	Amaryllidaceae	<i>Crinum erubescens</i> L. f. ex Aiton	<i>Crinum erubescens</i> L. f. ex Aiton	

Vol. Tab.	Year	Family	Name in Les Liliacées	Currently accepted name	Material at G
1 28	1803	Iridaceae	<i>Ferraria undulata</i> L.	<i>Ferraria crispa</i> Burm.	
1 29	1803	Iridaceae	<i>Iris sisyriochium</i> L.	<i>Moraea sisyriochium</i> (L.) Ker Gawl.	
1 30	1803	Iridaceae	<i>Ixia filiformis</i> Vent.	<i>Ixia patens</i> Aiton	
1 31	1803	Amaryllidaceae	<i>Amaryllis atamasco</i> L.	<i>Zephyranthes atamasco</i> (L.) Herb.	
1 32	1803	Amaryllidaceae	<i>Amaryllis equestris</i> Aiton	<i>Hippeastrum puniceum</i> (Lam.) Voss	
1 33	1803	Amaryllidaceae	<i>Amaryllis sarniensis</i> L.	<i>Nerine sarniensis</i> (L.) Herb.	
1 34	1803	Iridaceae	<i>Ixia longiflora</i> P. Bergius	<i>Ixia paniculata</i> D. Delaroché	
1 35	1803	Iridaceae	<i>Gladiolus tristis</i> L.	<i>Gladiolus tristis</i> L.	
1 36	1803	Iridaceae	<i>Gladiolus cuspidatus</i> Jacq.	<i>Gladiolus undulatus</i> L.	
1 37	1803	Liliaceae	<i>Tulipa clusiana</i> Redouté	<i>Tulipa clusiana</i> Redouté	G00415960
1 38	1803	Liliaceae	<i>Tulipa celsiana</i> Redouté	<i>Tulipa sylvestris</i> subsp. <i>australis</i> (Link) Pamp.	
1 39	1803	Amaryllidaceae	<i>Haemanthus coccineus</i> L.	<i>Haemanthus coccineus</i> L.	
1 40	1803	Alstroemeriaceae	<i>Alstroemeria ligtu</i> L.	<i>Alstroemeria ligtu</i> L.	
1 41	1803	Iridaceae	<i>Galaxia ixiflora</i> Redouté	<i>Ixia monadelphica</i> D. Delaroché	
1 sub 41	1803	Iridaceae	<i>Galaxia ramosa</i> Redouté	<i>Ixia monadelphica</i> D. Delaroché	G00415992
1 42	1803	Iridaceae	<i>Vieusseuxia glaucopsis</i> DC.	<i>Moraea aristata</i> (D. Delaroché) Asch. & Graebn.	
1 43	1803	Orchidaceae	<i>Limodorum tankervilleae</i> Banks ex L'Hér.	<i>Phaius tankervilleae</i> (Banks ex L'Hér.) Blume	
1 44	1803	Iridaceae	<i>Gladiolus inclinatus</i> Redouté	<i>Babiana tubiflora</i> (L. f.) Ker Gawl.	G00415961
1 45	1803	Iridaceae	<i>Moraea iridioides</i> L.	<i>Dietes iridioides</i> (L.) Sweet	
1 46	1803	Alstroemeriaceae	<i>Alstroemeria pelegrina</i> L.	<i>Alstroemeria pelegrina</i> L.	
1 47	1803	Iridaceae	<i>Sisyriochium convolutum</i> Nocca	<i>Sisyriochium convolutum</i> Nocca	colour proof
1 48	1803	Iridaceae	<i>Iris tuberosa</i> L.	<i>Iris tuberosa</i> L.	colour proof
1 49	1804	Zingiberaceae	<i>Kaempferia longa</i> Jacq.	<i>Kaempferia rotunda</i> L.	
1 50	1804	Amaryllidaceae	<i>Allium striatum</i> Jacq.	<i>Nothoscordum bivalve</i> (L.) Britton	
1 51	1804	Liliaceae	<i>Fritillaria latifolia</i> Willd.	<i>Fritillaria latifolia</i> Willd.	
1 52	1804	Asparagaceae	<i>Lachenalia pendula</i> Aiton	<i>Lachenalia bulbifera</i> (Cirillo) Engl.	
1 53	1804	Iridaceae	<i>Montbretia securigera</i> (Aiton) Redouté	<i>Tritonia securigera</i> (Aiton) Ker Gawl.	colour proof
1 54	1804	Iridaceae	<i>Diasia iridifolia</i> DC.	<i>Melaspheerula graminea</i> (L. f.) Ker Gawl.	
1 55	1804	Iridaceae	<i>Gladiolus lineatus</i> Salisb.	<i>Tritonia gladiolaris</i> (Lam.) Goldblatt & J.C. Manning	

Vol. Tab.	Year	Family	Name in Les Liliacées	Currently accepted name	Material at G
1	1804	Iridaceae	<i>Moraea vaginata</i> Redouté	<i>Trimezia northiana</i> (Schneev.) Ravenna	
1	1804	Marantaceae	<i>Maranta arundinacea</i> L.	<i>Maranta arundinacea</i> L.	
1	1804	Asparagaceae	<i>Anthericum milleflorum</i> Redouté	<i>Arthropodium milleflorum</i> (Redouté) J.F. Macbr.	
1	1804	Asparagaceae	<i>Lachenalia lanceifolia</i> Jacq.	<i>Ledebouria revoluta</i> (L. f.) Jessop	
1	1804	Zingiberaceae	<i>Globba nutans</i> L.	<i>Alpinia nutans</i> (L.) Roscoe	
1	add. / corr. 1804	Liliaceae	<i>Tulipa agenensis</i> Redouté	<i>Tulipa agenensis</i> Redouté	
2	1804	Amaryllidaceae	<i>Amaryllis aurea</i> L'Hér.	<i>Lycoris aurea</i> (L'Hér.) Herb.	
2	1804	Amaryllidaceae	<i>Amaryllis broussonetii</i> Redouté	<i>Crinum ornatum</i> (Aiton) Herb.	
2	1804	Asparagaceae	<i>Ornithogalum arabicum</i> L.	<i>Ornithogalum arabicum</i> L.	
2	1804	Iridaceae	<i>Ixia dubia</i> Vent.	<i>Ixia dubia</i> Vent.	
2	1804	Iridaceae	<i>Gladiolus carneus</i> F. Delaroché	<i>Gladiolus carneus</i> F. Delaroché	
2	1804	Iridaceae	<i>Sisyrinchium striatum</i> Sm.	<i>Sisyrinchium striatum</i> Sm.	
2	1804	Liliaceae	<i>Fritillaria persica</i> L.	<i>Fritillaria persica</i> L.	
2	1804	Amaryllidaceae	<i>Allium fragrans</i> Vent.	<i>Nothoscordum gracile</i> (Aiton) Stearn	
2	1804	Asparagaceae	<i>Albuca major</i> L.	<i>Albuca canadensis</i> (L.) F.M. Leight.	
2	1804	Asparagaceae	<i>Albuca cornuta</i> Redouté	<i>Albuca canadensis</i> (L.) F.M. Leight.	
2	1804	Iridaceae	<i>Moraea sordescens</i> Jacq.	<i>Moraea vegeta</i> L.	colour proof
2	1804	Pontederiaceae	<i>Pontederia cordata</i> L.	<i>Pontederia cordata</i> L.	
2	1804	Bromeliaceae	<i>Pitcairnia latifolia</i> sensu Redouté	<i>Pitcairnia bifrons</i> (Lindl.) Read	
2	1804	Bromeliaceae	<i>Pitcairnia latifolia</i> sensu Redouté	<i>Pitcairnia bifrons</i> (Lindl.) Read	
2	1804	Bromeliaceae	<i>Pitcairnia bromeliifolia</i> L'Hér.	<i>Pitcairnia bromeliifolia</i> L'Hér.	
2	1804	Bromeliaceae	<i>Pitcairnia angustifolia</i> Aiton	<i>Pitcairnia angustifolia</i> Aiton	
2	1804	Strelitziaceae	<i>Strelitzia reginae</i> Banks	<i>Strelitzia reginae</i> Banks	
2	1804	Strelitziaceae	<i>Strelitzia reginae</i> Banks	<i>Strelitzia reginae</i> Banks	
2	1804	Asphodelaceae	<i>Dianella caerulea</i> Willd.	<i>Dianella caerulea</i> Sims	G00415966
2	1804	Asparagaceae	<i>Convallaria japonica</i> Thunb.	<i>Ophiopogon japonicus</i> (Thunb.) Ker Gawl.	
2	1804	Iridaceae	<i>Crocus minimus</i> Redouté	<i>Crocus minimus</i> Redouté	
2	1804	Orchidaceae	<i>Epidendrum ciliare</i> L.	<i>Epidendrum ciliare</i> L.	
2	1804	Orchidaceae	<i>Limodorum purpureum</i> Lam.	<i>Bletia purpurea</i> (Lam.) A. DC.	

Vol. Tab.	Year	Family	Name in Les Liliacées	Currently accepted name	Material at G
2 84	1804	Orchidaceae	<i>Epidendrum bifidum</i> Sw.	<i>Psychilis bifida</i> (Aubl.) Sauleda	
2 85	1804	Iridaceae	<i>Ixia anemoniflora</i> sensu Redouté	<i>Sparaxis bulbifera</i> (L.) Ker Gawl.	G00415962
2 86	1804	Iridaceae	<i>Ixia fuscocitrina</i> Desf. ex Redouté	<i>Ixia fuscocitrina</i> Desf. ex Redouté	G00415981
2 87	1804	Iridaceae	<i>Ixia hyalina</i> Desf. ex Redouté, nom. illeg.	<i>Tritonia squalida</i> (Aiton) Ker Gawl.	
2 88	1804	Iridaceae	<i>Ixia bulbocodium</i> (L.) L.	<i>Romulea bulbocodium</i> (L.) Sebast. & Mauri	
2 89	1804	Iridaceae	<i>Ixia miniata</i> Jacq.	<i>Tritonia deusta</i> subsp. <i>miniata</i> (Jacq.) M.P. de Vos	
2 90	1804	Iridaceae	<i>Gladiolus plicatus</i> Jacq.	<i>Babiana fragrans</i> (Jacq.) Steud.	G01100087; colour proof
2 91	1804	Asparagaceae	<i>Dracaena terminalis</i> L.	<i>Cordylone fruticosa</i> (L.) A.Chev.	
2 92	1804	Asparagaceae	<i>Dracaena reflexa</i> Lam.	<i>Dracaena reflexa</i> Lam.	
2 93	1804	Haemodioraceae	<i>Wachendorfia thyrsiflora</i> L.	<i>Wachendorfia thyrsiflora</i> L.	
2 94	1804	Commelinaceae	<i>Tradescantia rosea</i> Vent.	<i>Callisia rosea</i> (Vent.) D.R. Hunt	
2 95	1804	Commelinaceae	<i>Tradescantia virginica</i> L.	<i>Tradescantia virginica</i> L.	
2 96	1804	Iridaceae	<i>Ixia cepacea</i> Redouté	<i>Micranthus tubulosus</i> (Burm. f.) N.E. Br.	
2 97	1804	Amaryllidaceae	<i>Allium moly</i> L.	<i>Allium moly</i> L.	
2 98	1804	Amaryllidaceae	<i>Allium tataricum</i> L. f.	<i>Allium ramosum</i> L.	
2 99	1804	Amaryllidaceae	<i>Allium scorzonerifolium</i> Desf. ex Redouté	<i>Allium scorzonerifolium</i> Desf. ex Redouté	G00415995
2 100	1804	Amaryllidaceae	<i>Allium moschatum</i> L.	<i>Allium moschatum</i> L.	colour proof
2 101	1804	Amaryllidaceae	<i>Allium carolinianum</i> Redouté	<i>Allium carolinianum</i> Redouté	G00165359
2 102	1804	Amaryllidaceae	<i>Allium nigrum</i> L.	<i>Allium nigrum</i> L.	
2 103	1805	Liliaceae	<i>Lilium superbum</i> L.	<i>Lilium superbum</i> L.	
2 104	1805	Liliaceae	<i>Lilium philadelphicum</i> L.	<i>Lilium philadelphicum</i> L.	
2 105	1805	Liliaceae	<i>Lilium penduliflorum</i> Redouté	<i>Lilium canadense</i> L.	G00165976
2 106	1805	Asparagaceae	<i>Hemerocallis caerulea</i> Andrews	<i>Hosta ventricosa</i> Stearn	
2 107	1805	Cannaceae	<i>Canna flaccida</i> Salisb.	<i>Canna flaccida</i> Salisb.	
2 108	1805	Commelinaceae	<i>Commelina tuberosa</i> L.	<i>Commelina tuberosa</i> L.	
2 109	1805	Iridaceae	<i>Ixia liliago</i> Desf. ex Redouté	<i>Sparaxis grandiflora</i> subsp. <i>fimbriata</i> (Lam.) Goldblatt	G00415994
2 110	1805	Iridaceae	<i>Anthyloza aethiopica</i> L.	<i>Chasmanthe aethiopica</i> (L.) N.E. Br.	
2 111	1805	Liliaceae	<i>Tulipa suaveolens</i> Roth	<i>Tulipa suaveolens</i> Roth	
2 112	1805	Iridaceae	<i>Gladiolus cardinalis</i> Curtis	<i>Gladiolus cardinalis</i> Curtis	

Vol. Tab.	Year	Family	Name in Les Liliacées	Currently accepted name	Material at G
2	1805	Orchidaceae	<i>Epidendrum sinense</i> Andrews	<i>Cymbidium sinense</i> (Andrews) Willd.	
2	1805	Orchidaceae	<i>Epidendrum aloifolium</i> L.	<i>Cymbidium aloifolium</i> (L.) Sw.	
2	1805	Amaryllidaceae	<i>Amaryllis undulata</i> L.	<i>Nerine undulata</i> (L.) Herb.	
2	1805	Asparagaceae	<i>Scilla maritima</i> L.	<i>Drimis maritima</i> (L.) Stearn	
2	1805	Asparagaceae	<i>Aletris fragrans</i> L.	<i>Dracaena fragrans</i> (L.) Ker Gawl.	
2	1805	Amaryllidaceae	Allium obtusiflorum Redouté	Allium obtusiflorum Redouté	G00415959
2	1805	Amaryllidaceae	<i>Allium flavum</i> L.	<i>Allium flavum</i> L.	
2	1805	Asparagaceae	<i>Ornithogalum longibracteatum</i> Jacq.	<i>Albuca bracteata</i> (Thunb.) J.C. Manning & Goldblatt	
3	1805	Iridaceae	Betamcanda chinensis (L.) Redouté	<i>Iris domestica</i> (L.) Goldblatt & Mabb.	
3	1805	Iridaceae	<i>Gladiolus undulatus</i> L.	<i>Gladiolus undulatus</i> L.	G00341959
3	1805	Iridaceae	<i>Gladiolus ringens</i> Andrews, nom. illeg.	<i>Gladiolus carinatus</i> Aiton	
3	1805	Iridaceae	Gladiolus xanthospilus Redouté	<i>Freesia caryophyllacea</i> (Burm. f.) N.E. Br.	G00190253
3	1805	Iridaceae	Gladiolus orobanche Redouté	<i>Gladiolus brevifolius</i> Jacq.	colour proof
3	1805	Iridaceae	<i>Ixia polystachya</i> L.	<i>Ixia polystachya</i> L.	G01100086
3	1805	Iridaceae	<i>Ixia scillaris</i> L.	<i>Ixia scillaris</i> L.	
3	1805	Iridaceae	<i>Ixia bulbifera</i> L.	<i>Sparaxis bulbifera</i> (L.) Ker Gawl.	
3	1805	Iridaceae	<i>Ixia tricolor</i> Schneev.	<i>Sparaxis tricolor</i> (Schneev.) Ker Gawl.	
3	1805	Liliaceae	<i>Scilla amoena</i> L.	<i>Scilla amoena</i> L.	
3	1805	Liliaceae	<i>Fritillaria imperialis</i> L.	<i>Fritillaria imperialis</i> L.	
3	1805	Asparagaceae	<i>Muscari ambrosiacum</i> Moench	<i>Muscarimia muscari</i> (L.) Losink	
3	1805	Melanthiaceae	<i>Trillium sessile</i> L.	<i>Trillium sessile</i> L.	
3	1805	Melanthiaceae	<i>Trillium rhomboideum</i> Michx.	<i>Trillium erectum</i> L.	
3	1805	Amaryllidaceae	<i>Leucojum aestivum</i> L.	<i>Leucojum aestivum</i> L.	
3	1805	Iridaceae	<i>Gladiolus cuspidatus</i> Jacq.	<i>Gladiolus undulatus</i> L.	
3	1805	Iridaceae	<i>Ixia maculata</i> L.	<i>Ixia maculata</i> L.	
3	1805	Iridaceae	<i>Ixia conica</i> Salisb.	<i>Ixia maculata</i> L.	
3	1806	Iridaceae	<i>Ixia grandiflora</i> D. Delaroche	<i>Sparaxis grandiflora</i> (D. Delaroche) Ker Gawl.	
3	1806	Iridaceae	<i>Ixia patens</i> Aiton	<i>Ixia patens</i> Aiton	
3	1806	Iridaceae	<i>Gladiolus junceus</i> L. f.	<i>Freesia verrucosa</i> (B. Vogel) Goldblatt & J.C. Manning	

Vol. Tab.	Year	Family	Name in Les Liliacées	Currently accepted name	Material at G
3	1806	Iridaceae	<i>Gladiolus mucronatus</i> sensu Redouté	<i>Babiana villosa</i> (Aiton) Ker Gawl.	
3	1806	Liliaceae	<i>Ornithogalum umbellatum</i> L.	<i>Ornithogalum umbellatum</i> L.	
3	1806	Zingiberaceae	<i>Kaempferia galanga</i> L.	<i>Kaempferia galanga</i> L.	
3	1806	Liliaceae	<i>Lilium pyrenaicum</i> Gouan	<i>Lilium pyrenaicum</i> Gouan	
3	1806	Liliaceae	<i>Lilium martagon</i> L.	<i>Lilium martagon</i> L.	
3	1806	Asparagaceae	<i>Polygonatum tuberosum</i> L.	<i>Polygonatum tuberosum</i> L.	
3	1806	Amaryllidaceae	<i>Amaryllis lutea</i> L.	<i>Sternbergia lutea</i> (L.) Ker Gawl. ex Spreng.	
3	1806	Iridaceae	<i>Sisyrinchium bermudiana</i> L.	<i>Sisyrinchium bermudiana</i> L.	
3	1806	Amaryllidaceae	<i>Leucojum trichophyllum</i> Schousb.	<i>Acis trichophylla</i> G. Don	colour proof
3	1806	Heliconiaceae	<i>Heliconia psittacorum</i> L. f.	<i>Heliconia psittacorum</i> L. f.	
3	1806	Iridaceae	<i>Iris fimbriata</i> Vent.	<i>Iris fimbriata</i> Vent.	
3	1806	Amaryllidaceae	<i>Pancratium illyricum</i> L.	<i>Pancratium illyricum</i> L.	
3	1806	Amaryllidaceae	<i>Pancratium littorale</i> Jacq.	<i>Hymenocallis littoralis</i> (Jacq.) Salisb.	
3	1806	Amaryllidaceae	Pancratium disciforme Redouté	<i>Hymenocallis rotata</i> (Ker Gawl.) Herb.	
3	1806	Amaryllidaceae	<i>Pancratium speciosum</i> L. f. ex Salisb.	<i>Hymenocallis speciosa</i> (L. f. ex Salisb.) Salisb.	
3	1806	Amaryllidaceae	<i>Narcissus odorus</i> L.	<i>Narcissus x odorus</i> L.	G00341957
3	1806	Amaryllidaceae	<i>Narcissus pseudonarcissus</i> L.	<i>Narcissus pseudonarcissus</i> L.	G00341999
3	1806	Amaryllidaceae	<i>Narcissus jonquilla</i> L.	<i>Narcissus jonquilla</i> L.	
3	1806	Amaryllidaceae	<i>Narcissus poeticus</i> L.	<i>Narcissus poeticus</i> L.	
3	1806	Asphodelaceae	<i>Tritoma media</i> (Donn) Ker Gawl., nom. illeg.	<i>Kniphofia sarmentosa</i> Kunth	
3	1806	Asparagaceae	<i>Lachenalia angustifolia</i> Jacq.	<i>Lachenalia angustifolia</i> Jacq.	
3	1807	Iridaceae	<i>Diasia graminifolia</i> DC.	<i>Melospaerula graminea</i> (L. f.) Ker Gawl.	
3	1807	Orchidaceae	<i>Neottia elata</i> (Sw.) Sw.	<i>Cyclopogon elatus</i> (Sw.) Schltr.	
3	1807	Liliaceae	<i>Tulipa sylvestris</i> L.	<i>Tulipa sylvestris</i> L.	
3	1807	Liliaceae	<i>Scilla umbellata</i> Ramond	<i>Scilla verna</i> Huds.	
3	1807	Liliaceae	<i>Scilla peruviana</i> L.	<i>Scilla peruviana</i> L.	
3	1807	Commelinaceae	<i>Tradescantia discolor</i> L'Hér.	<i>Tradescantia spathacea</i> Sw.	
3	1807	Hypoxidaceae	<i>Hypoxis stellata</i> (Thunb.) L. f.	<i>Pauridia capensis</i> (L.) Snijman & Kocyan	
3	sub 169	Hypoxidaceae	Hypoxis caerulea Redouté	<i>Pauridia capensis</i> (L.) Snijman & Kocyan	

Vol. Tab.	Year	Family	Name in Les Liliacées	Currently accepted name	Material at G
3	sub 169	Hypoxidaceae	<i>Hypoxis tridentata</i> Redouté	<i>Pauridia capensis</i> (L.) Snijman & Kocyan	
3	170	Hypoxidaceae	<i>Hypoxis sobolifera</i> Jacq.	<i>Hypoxis sobolifera</i> Jacq.	
3	171	Iridaceae	<i>Sisyrinchium elegans</i> Redouté	<i>Moraea collina</i> Thunb.	
3	172	Iridaceae	<i>Iris martinicensis</i> Jacq.	<i>Trimezia martinicensis</i> (Jacq.) Herb.	
3	173	Iridaceae	<i>Crocus sativus</i> L.	<i>Crocus sativus</i> L.	G00415889
3	174	Zingiberaceae	<i>Globba erecta</i> Redouté	<i>Alpinia calcarata</i> (Haw.) Roscoe	
3	175	Liliaceae	<i>Eucomis regia</i> (L.) Aiton	<i>Eucomis regia</i> (L.) Aiton	
3	176	Haemodoraceae	<i>Anigozanthos flavidus</i> Redouté	Anigozanthos flavidus Redouté	G00341702
3	177	Amaryllidaceae	<i>Narcissus calathinus</i> Delarbre, nom. illeg.	<i>Narcissus triandrus</i> L. subsp. <i>triandrus</i>	G00341978
3	178	Asphodelaceae	<i>Asphodelus fistulosus</i> L.	<i>Asphodelus fistulosus</i> L.	
3	179	Amaryllidaceae	<i>Allium globosum</i> M. Bieb. ex Redouté	<i>Allium saxatile</i> M. Bieb.	
3	180	Amaryllidaceae	<i>Amaryllis belladonna</i> L.	<i>Amaryllis belladonna</i> L.	
4	181	Amaryllidaceae	<i>Crinum giganteum</i> Andrews	<i>Crinum jagus</i> (J. Thoms.) Dandy	
4	182	Amaryllidaceae	<i>Cyrtanthus vittatus</i> Desf. ex Redouté	<i>Cyrtanthus clavatus</i> (L'Hér.) R.A. Dyer	
4	183	Liliaceae	<i>Massonia pustulata</i> Jacq.	<i>Massonia pustulata</i> Jacq.	
4	184	Colchicaceae	<i>Uvularia perfoliata</i> L.	<i>Uvularia perfoliata</i> L.	
4	185	Asparagaceae	<i>Smilacina stellata</i> (L.) Desf.	<i>Maianthemum stellatum</i> (L.) Link	
4	186	Asphodelaceae	<i>Veltheimia abyssinica</i> Redouté	<i>Kniphofia pumila</i> (Aiton) Kunth	
4	187	Amaryllidaceae	<i>Pancratium croceum</i> Savigny	<i>Stenomesson flavum</i> (Ruiz & Pav.) Herb.	
4	188	Amaryllidaceae	<i>Narcissus candidissimus</i> Desf. ex Redouté	<i>Narcissus moschatus</i> L.	
4	189	Iridaceae	<i>Iris persica</i> L.	<i>Iris persica</i> L.	
4	190	Asparagaceae	<i>Scilla obtusifolia</i> Poir.	<i>Prospero obtusifolium</i> (Poir.) Speta	
4	191	Asparagaceae	<i>Phalangium elatum</i> (Aiton) Poir.	<i>Chlorophytum capense</i> (L.) Voss	
4	192	Commelinaceae	<i>Commelina zanoniana</i> L.	<i>Tradescantia zanoniana</i> (L.) Sw.	
4	193	Asparagaceae	<i>Veltheimia capensis</i> (L.) Redouté	Veltheimia capensis (L.) Redouté	
4	194	Liliaceae	<i>Erythronium dens-canis</i> L.	<i>Erythronium dens-canis</i> L.	
4	195	Asparagaceae	<i>Albuca abyssinica</i> Jacq.	<i>Albuca abyssinica</i> Jacq.	
4	196	Iridaceae	<i>Crocus luteus</i> Lam.	<i>Crocus x luteus</i> Lam.	
4	197	Colchicaceae	<i>Bulbocodium vernum</i> L.	<i>Colchicum bulbocodium</i> Ker Gawl.	

Vol. Tab.	Year	Family	Name in <i>Les Liliacées</i>	Currently accepted name	Material at G
4 198	1807	Iridaceae	<i>Ixia plantaginea</i> Aiton, nom. illeg.	<i>Micranthus alopecuroides</i> (L.) Eckl.	colour proof
4 199	1807	Liliaceae	<i>Lilium candidum</i> L.	<i>Lilium candidum</i> L.	
4 200	1807	Amaryllidaceae	<i>Galanthus nivalis</i> L.	<i>Galanthus nivalis</i> L.	
4 201	1807	Cannaceae	<i>Canna indica</i> L.	<i>Canna indica</i> L.	
4 202	1807	Asparagaceae	<i>Hyacinthus serotinus</i> L.	<i>Dipcadi serotinum</i> (L.) Medik.	
4 203	1807	Asparagaceae	<i>Hyacinthus viridis</i> L.	<i>Dipcadi viride</i> (L.) Moench	
4 204	1807	Amaryllidaceae	<i>Haemanthus multiflorus</i> Martyn	<i>Scadoxus multiflorus</i> (Martyn) Raf.	
4 205	1808	Liliaceae	<i>Scilla lilio-hyacinthus</i> L.	<i>Scilla lilio-hyacinthus</i> L.	
4 206	1808	Commelinaceae	Commelina vulgaris Redouté	<i>Commelina communis</i> L.	
4 207	1808	Commelinaceae	<i>Commelina africana</i> L.	<i>Commelina africana</i> L.	
4 208	1808	Asparagaceae	<i>Eucomis punctata</i> L'Hér., nom. illeg.	<i>Eucomis comosa</i> (Houtt.) H.R. Wehrh.	
4 209	1808	Butomaceae	<i>Butomus umbellatus</i> L.	<i>Butomus umbellatus</i> L.	
4 210	1808	Liliaceae	<i>Lilium bulbiferum</i> L.	<i>Lilium bulbiferum</i> L.	
4 211	1808	Iridaceae	<i>Iris scirpioides</i> Desf.	<i>Iris planifolia</i> (Mill.) T. Durand & Schinz	
4 212	1808	Iridaceae	<i>Iris xiphoides</i> Ehrh.	<i>Iris latifolia</i> (Mill.) Voss	
4 213	1808	Amaryllidaceae	<i>Allium roseum</i> L.	<i>Allium roseum</i> L.	
4 214	1808	Amaryllidaceae	<i>Allium foliosum</i> Clarion ex DC.	<i>Allium schoenoprasum</i> L.	
4 215	1808	Asphodelaceae	<i>Phalangium bicolor</i> (Desf.) DC.	<i>Simethis mattiazii</i> (Vand.) Sacc.	
4 216a	1808	Asparagaceae	<i>Maianthemum bifolium</i> (L.) F.W. Schmidt	<i>Maianthemum bifolium</i> (L.) F.W. Schmidt	
4 216b	1808	Asparagaceae	<i>Maianthemum canadense</i> Desf.	<i>Maianthemum canadense</i> Desf.	
4 217	1808	Amaryllidaceae	Leucojum grandiflorum Redouté, nom. illeg.	<i>Acis trichophylla</i> Sweet ex G. Don	
4 218	1808	Nartheciaceae	<i>Abama ossifraga</i> (L.) DC.	<i>Narthecium ossifragum</i> (L.) Huds.	
4 219	1808	Liliaceae	<i>Tulipa oculus-solis</i> St.-Amans ex DC.	Tulipa agenensis Redouté	
4 220	1808	Amaryllidaceae	<i>Narcissus gouanii</i> Roth	<i>Narcissus x incomparabilis</i> Mill.	G0034/1998
4 221	1808	Liliaceae	<i>Ornithogalum fistulosum</i> Ramond ex DC.	<i>Gagea bohemica</i> (Zauschn.) Schult. & Schult. f.	
4 222	1808	Liliaceae	<i>Fritillaria meleagris</i> L.	<i>Fritillaria meleagris</i> L.	
4 223	1808	Asphodelaceae	<i>Asphodelus luteus</i> L.	<i>Asphodeline lutea</i> (L.) Rchb.	
4 224	1808	Asparagaceae	<i>Scilla non-scripta</i> (L.) Hoffmanns. & Link	<i>Hyacinthoides non-scripta</i> (L.) Chouard ex Rothm.	
4 225	1808	Asparagaceae	<i>Scilla patula</i> (Desf.) DC.	<i>Hyacinthoides hispanica</i> (Mill.) Rothm.	

Vol. Tab.	Year	Family	Name in Les Liliacées	Currently accepted name	Material at G
4	226	Melanthiaceae	<i>Paris quadrifolia</i> L.	<i>Paris quadrifolia</i> L.	
4	227	Asparagaceae	<i>Convallaria majalis</i> L.	<i>Convallaria majalis</i> L.	
4	228	Colchicaceae	<i>Colchicum autumnale</i> L.	<i>Colchicum autumnale</i> L.	
4	229	Asparagaceae	<i>Convallaria multiflora</i> L.	<i>Polygonatum multiflorum</i> (L.) All.	
4	230	Asparagaceae	<i>Smilacina racemosa</i> (L.) Desf.	<i>Maianthemum racemosum</i> (L.) Link	
4	231	Asparagaceae	<i>Muscari comosum</i> (L.) Miller	<i>Muscari comosum</i> (L.) Miller	
4	232	Asparagaceae	<i>Muscari racemosum</i> (L.) Medik., nom. illeg.	<i>Muscari neglectum</i> Guss. ex Ten. & Sangiov.	
4	233	Amaryllidaceae	<i>Allium nutans</i> L.	<i>Allium nutans</i> L.	
4	234	Asparagaceae	<i>Ornithogalum pyrenaicum</i> L.	<i>Ornithogalum pyrenaicum</i> L.	
4	235	Iridaceae	<i>Iris pseudacorus</i> L.	<i>Iris pseudacorus</i> L.	
4	236	Iridaceae	<i>Iris monnieri</i> Redouté	<i>Iris orientalis</i> Mill.	
4	237	Iridaceae	<i>Iris pratensis</i> Lam., nom. illeg.	<i>Iris sibirica</i> L.	
4	238	Colchicaceae	<i>Colchicum variegatum</i> L.	<i>Colchicum variegatum</i> L.	
4	239	Commelinaceae	<i>Tradescantia erecta</i> Jacq.	<i>Tinantia erecta</i> (Jacq.) Fenzl	
4	240	Amaryllidaceae	<i>Allium mutabile</i> Michx.	<i>Allium canadense</i> var. <i>mobilense</i> (Regel) Ownbey	
8	481	Iridaceae	<i>Iris triflora</i> Balb.	<i>Iris lactea</i> Pallas	
8	482	Amaryllidaceae	<i>Allium sulcatum</i> DC.	<i>Allium neapolitanum</i> Cirillo	
8	483	Liliaceae	<i>Aphyllanthes monspeliensis</i> L.	<i>Aphyllanthes monspeliensis</i> L.	
8	484	Iridaceae	<i>Ferraria ferrariola</i> (Jacq.) Willd.	<i>Ferraria ferrariola</i> (Jacq.) Willd.	
8	485	Agavaceae	<i>Agave spicata</i> DC.	<i>Manfreda scabra</i> (Ortega) McVaugh	
8	sub 486	Amaryllidaceae	<i>Narcissus tenuifolius</i> Salisb.	<i>Narcissus bulbocodium</i> L.	
8	sub 486	Amaryllidaceae	<i>Narcissus aureus</i> DC.	<i>Narcissus bulbocodium</i> L.	
8	sub 486	Amaryllidaceae	<i>Narcissus cantabricus</i> DC.	<i>Narcissus cantabricus</i> DC.	
8	sub 486	Amaryllidaceae	<i>Narcissus coornei</i> DC.	<i>Narcissus bulbocodium</i> L.	
8	sub 486	Amaryllidaceae	<i>Narcissus coronatus</i> DC.	<i>Narcissus triandrus</i> L. subsp. <i>triandrus</i>	
8	sub 486	Amaryllidaceae	<i>Narcissus cyclamineus</i> DC.	<i>Narcissus cyclamineus</i> DC.	