



OPEN ACCESS

EDITED BY

Robin Temmerman,
European College of Veterinary Pharmacology
and Toxicology (ECVPT), Belgium

REVIEWED BY

Claudia Interlandi,
University of Messina, Italy
Isabella Corsato Alvarenga,
Colorado State University, United States

*CORRESPONDENCE

Fabienne Eichler
✉ f.eichler@fu-berlin.de

RECEIVED 02 October 2023

ACCEPTED 06 November 2023

PUBLISHED 11 December 2023

CITATION

Eichler F, Ehrle A, Jensen KC, Baudisch N,
Petersen H, Bäumer W, Lischer C and
Wiegard M (2023) Behavioral observations,
heart rate and heart rate variability in horses
following oral administration of a cannabidiol
containing paste in three escalating doses (part
1/2). *Front. Vet. Sci.* 10:1305868.
doi: 10.3389/fvets.2023.1305868

COPYRIGHT

© 2023 Eichler, Ehrle, Jensen, Baudisch,
Petersen, Bäumer, Lischer and Wiegard. This is
an open-access article distributed under the
terms of the [Creative Commons Attribution
License \(CC BY\)](https://creativecommons.org/licenses/by/4.0/). The use, distribution or
reproduction in other forums is permitted,
provided the original author(s) and the
copyright owner(s) are credited and that the
original publication in this journal is cited, in
accordance with accepted academic practice.
No use, distribution or reproduction is
permitted which does not comply with these
terms.

Behavioral observations, heart rate and heart rate variability in horses following oral administration of a cannabidiol containing paste in three escalating doses (part 1/2)

Fabienne Eichler^{1*}, Anna Ehrle¹, Katharina Charlotte Jensen²,
Natalie Baudisch¹, Hannah Petersen¹, Wolfgang Bäumer³,
Christoph Lischer¹ and Mechthild Wiegard⁴

¹Equine Clinic, Veterinary Hospital Freie Universität Berlin, School of Veterinary Medicine, Freie Universität Berlin, Berlin, Germany, ²Institute of Veterinary Epidemiology and Biostatistics, School of Veterinary Medicine, Freie Universität Berlin, Berlin, Germany, ³Institute of Pharmacology and Toxicology, School of Veterinary Medicine, Freie Universität Berlin, Berlin, Germany, ⁴Institute of Animal Welfare, Animal Behavior and Laboratory Animal Science, School of Veterinary Medicine, Freie Universität Berlin, Berlin, Germany

Cannabidiol (CBD) products have been proposed to exert stress- and anxiety-relieving effects in animals. Despite the increasing popularity of CBD for veterinary use, the available research detailing the effects of CBD in horses is limited. The aim of this study (part 1 of 2) was to analyze stress parameters via behavioral observations and heart rate monitoring in healthy horses following single oral administration of a CBD containing paste in different doses. Study products were two pastes for oral administration, one containing CBD and one containing no active ingredient. Pastes were applied as single administrations in consecutive trials with escalating dosages (doses: 0.2, 1.0, 3.0 mg CBD/kg) to a treatment (trial 1: $n = 3$, trial 2: $n = 3$, trial 3: $n = 5$ horses) and a control group (trial 1: $n = 3$, trial 2: $n = 3$, trial 3: $n = 6$ horses) with minimum wash-out periods of seven days in between. Behavioral parameters were evaluated using video recordings to score the levels of sedation including the horses' reactions to acoustic and visual stimuli. Facial expression was assessed using photographs. Evaluation was based on the previously described facial sedation scale for horses (FaceSed) and the Horse Grimace Scale. For baseline values, identical observations were recorded on the day before each paste administration. Both paste administration and behavioral evaluation were performed double blinded. Cardiac beat-to-beat (R-R) intervals were continuously recorded throughout the trial and assessed using heart rate and heart rate variability parameters. Statistical analysis included comparison between treatment and control group over escalating doses and time points using linear mixed models. The CBD paste was well tolerated, and no side effects were observed. Analysis of sedation scores and facial expressions did not indicate significant differences between treatment and control group over the escalating doses. The heart rate was neither reduced, nor were significant changes in heart rate variability observed compared to the control group. Main limitation of this study is the small sample size. Further research is required to determine adequate doses and indications for the use of CBD products in horses.

KEYWORDS

behavior, CBD, equine, FaceSed, Horse Grimace Scale, sedation score

1 Introduction

Cannabidiol (CBD) belongs to the most well-known compounds of *Cannabis* plants and is gaining increasing attention in the field of veterinary medicine. Unlike Δ^9 -tetrahydrocannabinol (THC), CBD does not exhibit psychoactive properties (1, 2) but has been tested for analgesic, anti-inflammatory and anti-convulsant effects in companion animals (3–8). Additionally, the impact of CBD on anxiety and stress relief is currently under investigation. In humans, stress and anxiety are the most common indications for CBD use (9).

Mechanisms of action include various pathways: CBD may act as a ligand on serotonin_{1A} (5-HT_{1A}) receptors (10–14) and inhibits the deactivation of endogenous cannabinoids such as anandamide (AEA) (15–17). AEA is a ligand of the endocannabinoid (eCB) system which regulates emotional responses and can reduce anxiety (12, 18, 19). CBD may also influence cannabinoid type 1 (CB₁) receptors of the eCB system as an indirect agonist by increasing membrane fluidity and therefore modulating the constitutional activity of CB₁ (12, 20, 21).

In humans and rodents, CBD has been reported to decrease heart rate and to show anxiolytic effects (9, 22–25). However, results remain inconsistent, as other studies could not confirm these findings to the same extent (26–29). Further effects of CBD include sedation, which has been reported in humans (30, 31). In dogs, surveys among US veterinarians and pet owners have reported that sedation is a perceived side effect following CBD or hemp supplementation (32–34). It was additionally suggested that CBD supplementation may decrease stress-related aggressive behavior (1). Another study could not identify significant alteration in daily activity or quality of sleep in dogs (35). There are few reports detailing the effect of CBD on equine behavior: One study found a reduction of reactivity without any significant effect on the heart rate (36). Other reports showed no effect of CBD on ataxia, sedation scores or overall equine behavior (37, 38). Two case reports described CBD as an effective treatment for stereotypic behavior such as crib-biting and mechanical allodynia (39, 40). The effect of CBD on horses is of particular interest as all cannabinoids are on the list of prohibited substances issued by the international governing body of equestrian sports (FEI, Fédération Equestre Internationale) due to their assumed psychotropic properties (41).

The aim of this study was to analyze stress levels via behavioral observations and heart rate monitoring in healthy horses following oral administration of a CBD containing paste to further validate equine behavior under the influence of CBD medication. The authors hypothesized that increasing CBD doses would have a moderately calming effect in horses.

2 Materials and methods

2.1 Animals

Twelve Haflinger \times Warmblood cross horses, including seven mares and five stallions, were randomly assigned to a treatment or a control group ($n = 6 + 6$). Horses' age varied between 3 to 16 years (median: 11 years) in the treatment group and 10 to 26 years

(median: 10.5 years) in the control group. Mares and stallions were housed separately with mares having free paddock access. All horses were fed hay and mineral feed, and spent 8 h a day on pasture. The study was approved by the competent authority for licensing and notification procedures for animal experiments (LAVG) in Brandenburg, Germany (AZ: 2347–12–2021).

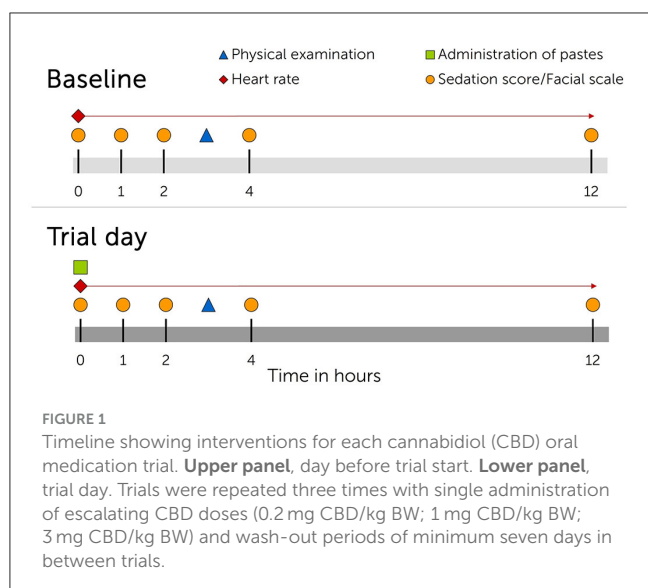
2.2 Study products

Study products were two pastes (treatment and control). The treatment paste contained 55% full spectrum CBD plant extract, medium-chain triglyceride (MCT) coconut oil, naturally occurring phytocannabinoids, terpenes, flavonoids and beeswax (TAMACAN XL 55%[®], Herosan healthcare GmbH, Austria). The THC content was below 0.2%. The control paste contained MCT oil and beeswax only. The ingredients of both pastes were analyzed, and concentrations of the contents were confirmed by an independent and internationally accredited anti-doping laboratory (Institute of Biochemistry, German Sport University Cologne, Germany). Pastes were labeled "A" or "B" by the manufacturer before shipment to conceal their formulations. People handling the horses, i.e., caretakers and sample takers, were unaware of the horses' group assignment.

2.3 Dose escalation study

The study was divided into three trials with administration of CBD paste in escalating doses (trial 1: 0.2 mg CBD/kg; trial 2: 1 mg CBD/kg; trial 3: 3 mg CBD/kg). Doses were selected based on the manufacturer's recommendation and the current literature (36, 38). The first two trials were performed with three horses in each group ($n = 3$ treatment + 3 control) and close attention was paid to the occurrence of possible side effects. The third trial (3 mg CBD/kg) was subsequently performed with all twelve horses ($n = 6$ treatment + 6 control). The day before each trial, horses were physically examined and a jugular vein catheter was aseptically placed. On the day of trial, the paste (A or B) was orally administered at 6:30 am. For better acceptance, the paste was inserted into a treat. To determine pharmacokinetic parameters of CBD administration in horses, multiple blood and urine samples were taken throughout the trials from all horses (42).

Equine behavior was recorded for the subsequent evaluation of a sedation score by an independent observer at time points 0, 1, 2, 4 and 12 hours (h) after paste administration (Figure 1). The occurrence and the depth of sedation was determined based on the observed position of the horse's head and the reaction to acoustic and visual stimuli (Table 1). Acoustic stimuli included a clicker as it is used for positive reinforcement training as well as the crackling noise of a plastic bag. As a visual stimulus, a pink cloth was attached to a stick and waved in front of the horse's face. Reactions to the stimuli were video recorded. Additionally, photographs were taken for subsequent assessment of the facial expressions. Expressions were rated based on the horse's orbital openings, position of ears, visibility of chewing muscles, position of lips and dilation of nostrils (Table 2).



Each horse's heart rate (HR) was continuously recorded throughout the trials using a Polar[®] H10 heart rate sensor (Polar[®] Electro Oy, Kempele, Finland). The sensor was attached to an electrode belt which spanned around the horse's chest. To enhance skin contact and signal transmission, the coat was trimmed and moisturized with water over the heart base between the 4th and 5th intercostal space where the electrodes were positioned. Each sensor was connected to a mobile device via Bluetooth to document the cardiac beat-to-beat (R-R) intervals with the Polar[®] Equine App (Version 1.2.1, Polar[®] Electro, Kempele, Finland).

Repeated physical examination was performed 2–4 h following paste administration, and blood samples were obtained for white blood cell (WBC) count.

Baseline values including recordings of equine behavior and heart rate were obtained in the same pattern as described on the day before each trial for comparative analysis (Figure 1). Trials were divided by wash-out periods of at least seven days.

2.4 Assessment of behavioral observations

Evaluation of the video recordings was based on a previously described sedation score (43). For assessment of the photographs, a facial expression scale was developed based on the facial sedation scale for horses (FaceSed) (44) and the Horse Grimace Scale (45). The described parameters were modified according to the reactions and expressions observed in the study animals (Tables 1, 2). Videos and photographs of each horse were randomly arranged and blinded assessment was performed by one person who was experienced in equine behavior studies but not actively involved in any of the trials. For each horse, stimulus and time point, the five parameters of the sedation score were summed up, resulting in scores ranging from 5 to 20 (Table 1). The scores of the three stimuli were then summed up to a total for each horse and time point, resulting in a total sedation score ranging from 15 to 60. For the facial expression scale, parameters were similarly added up to a

possible total sum of 6–18 for each time point and each individual horse. A score of 10 was given when the eyes were open, the ears forward pointing, the chewing muscles moderately present, the lips loosely touching and the nostrils non-dilated (Table 2). High scores represent a deeper relaxation or sedation.

2.5 Assessment of heart rate and heart rate variability

Heart rate (HR) and heart rate variability (HRV) were analyzed using the software Kubios[®] HRV Standard (ver. 3.5, Kubios[®] Oy, Kuopio, Finland). Parameters included the mean HR in beats per minute (bpm), the root mean square of successive beat-to-beat differences (RMSSD in milliseconds, ms) and the standard deviation of normal-to-normal beat-to-beat intervals (SDNN, ms). Automatic beat correction was applied to remove artifacts (threshold: very low, 0.3 s). Each recording period was divided into sections of 15 min as previously described (46).

2.6 Statistical analysis

Data were recorded in Microsoft Excel[®] (Version 2304) and statistical analysis was performed with SPSS[®] Statistics 27 (IBM[®], NY, USA). First, data was analyzed descriptively: The value for each total sedation score and the sedation scores of the three stimuli were displayed in bar charts (mean + standard deviation). For the inductive analysis, the difference between the total sedation score at baseline and during the trial was calculated for each horse and time point (ranging from –45 to +45). Similarly, the differences between score on baseline and trial day were calculated for the facial expression scale (ranging from –12 to +12). The effects of the dose levels on the differences between baseline and trial day of the total sedation score were analyzed using linear mixed models. Individual horses were assigned as subjects, dose levels as fixed effects (reference = control group; trial 1 = 0.2 mg CBD/kg; trial 2 = 1 mg CBD/kg; trial 3 = 3 mg CBD/kg) and time points as random effects (0 h; 1 h; 2 h; 4 h; 12 h). Residuals were visually inspected for normal distribution. The level of significance was $p < 0.05$. For the facial expression scale, the differences between baseline and trial day were calculated and tested for an effect of dose levels using a linear mixed model as described above.

For HR, RMSSD and SDNN parameters, the first eight 15-minute sections (total of two hours) post paste administration were selected for analysis as CBD blood concentrations reached a maximum here (42). To test for an effect of dose levels on the parameters, linear mixed models were calculated as described above.

To identify systematic differences between baseline and trial day values of HR, RMSSD and SDNN within the treatment group over time, linear mixed models for each outcome were calculated with trials (reference = baseline; trial 1 = 0.2 mg CBD/kg; trial 2 = 1 mg CBD/kg; trial 3 = 3 mg CBD/kg) as fixed effects. The following analysis was performed as described above with individual horses

TABLE 1 Sedation score developed for behavioral observations following single oral administration of cannabidiol (CBD) in three escalating doses (0.2 mg CBD/kg; 1 mg CBD/kg; 3 mg CBD/kg), based on the sedation score by Poller et al. (43).

Head position	
1	Lower lip at height of shoulder joint or higher
2	Lower lip between shoulder and olecranon
3	Lower lip between olecranon and carpal joint
4	Lower lip at carpal joint or lower
Reaction to stimulus: head movement	
1	Focus directed toward stimulus, jerky aversion
2	Focus directed toward stimulus, aversion, then refocusing on stimulus
3	Focus directed toward stimulus, slight aversion
4	Indifference/no reaction
Reaction to stimulus: ear movement	
1	Ears pointed, obvious flickering of ears, steady response to stimulus
2	Moderate flickering of one or both ears
3	Slight flickering of one or both ears
4	Indifference/no reaction
Reaction to stimulus: Chewing	
1	Chewing movement is interrupted and does not continue
2	Chewing movement is repeatedly interrupted and recontinued
3	Chewing movement is interrupted once and recontinued
4	Indifference/no interruption of chewing
Reaction to stimulus: body movement	
1	Moving back more than one step, turning away
2	Moving back one step, head jerking
3	Jerking/lifting/averting of head
4	Indifference/no reaction
Total sum for EACH stimulus: 5 - 20	
Total sum for ALL stimuli: 15 - 60	

A total sum was calculated for each stimulus (clicker, bag, cloth) and for all stimuli.

as subjects, dose levels as fixed effects and time points as random effects.

3 Results

3.1 Animals

The horses' body weight was on average 488 ± 55 kg in the treatment group and 443 ± 56 kg in the control group. During the first two trials, no side effects such as gastrointestinal intolerances were observed following paste application and it was considered safe to proceed with trial three. During trial three, one mare developed signs of a jugular vein thrombophlebitis and was excluded, resulting in five remaining horses in the treatment group to complete trial three ($n = 5 + 6$). Over all trials, the WBC count remained close to reference range with only mild WBC

TABLE 2 Facial expression scale developed for behavioral observations following single oral administration of cannabidiol (CBD) paste in three escalating doses (0.2 mg CBD/kg; 1 mg CBD/kg; 3 mg CBD/kg), based on the FaceSed (44) and Horse Grimace Scale (45).

Orbital opening	
2	Eyes completely open
3	Eyes partially open (> 50%)
4	Eyes almost/completely closed (< 50%)
Position of ears	
1	Pinned back
2	Forward pointed, position of attention
3	Asymmetrical; one ear hanging
4	Wide opening between ear tips
Chewing muscles	
1	Strained/obviously present
2	Moderately present
3	Not present
Lips	
1	Strained mouth
2	Loose touching of lips
3	Slight relaxation of one lip
4	Pronounced relaxation/hanging of one lip
Nostrils	
1	Dilated, outer ring clearly visible
2	Non-dilated nostrils
3	Small nostrils, relaxed outer ring
Total sum: 6 - 18	

TABLE 3 Mean \pm standard deviation of white blood cell (WBC) count after single oral administration of a cannabidiol (CBD) containing paste in three trials.

Parameter (Ref)	First trial (0.2 mg CBD/kg)	Second trial (1 mg CBD/kg)	Third trial (3 mg CBD/kg)
Control group			
WBC count (5–10 10^9 /L)	7.43 ± 0.98	6.88 ± 0.38	7.79 ± 1.28
Number of horses out of Ref (Value out of Ref)	$n = 0/3$	$n = 0/3$	$n = 1/6$ (10.31 10^9 /L)
Treatment group			
WBC count (5–10 10^9 /L)	10.49 ± 0.68	9.79 ± 1.33	7.97 ± 2.19
Number of horses out of Ref (Value out of Ref)	$n = 1/3$ (11.17 10^9 /L)	$n = 1/3$ (11.63 10^9 /L)	$n = 1/5$ (11.60 10^9 /L)

The number of horses with serum levels outside of the reference range (Ref) are reported for each group.

elevation (maximum WBC in the treatment group = 11.63×10^9 /L) (Table 3).

3.2 Behavioral observations

3.2.1 Sedation score

For all three trials, graphical illustration of the statistical data using bar charts did not identify a clear trend for higher or lower sedation scores between groups or dose levels (Figure 2, Supplementary Figures S1–S3). During trial 1, overall scores for baseline values ranged from 29.3 ± 1.3 to 40.3 ± 3.9 at all time points in the treatment group. Overall scores for trial day values ranged from 29.5 ± 5.5 to 45.3 ± 2.5 at all time points. In the control group, values ranged between 27.8 ± 5.3 to 34.5 ± 6.3 at baseline and between 23.2 ± 1.0 to 39.9 ± 10.8 on trial day. No trend was observed for values being generally higher or lower at certain time points in either group.

During trial 2, baseline values ranged from 32.0 ± 6.7 to 41.8 ± 8.3 and trial day values from 38.8 ± 10.0 to 44.3 ± 9.9 in the treatment group. All values were higher on trial day than at baseline as exemplified by graphical illustration. In the control group, baseline values were between 28.4 ± 6.2 to 36.8 ± 7.3 and trial day values between 28.8 ± 10.4 to 37.7 ± 10.2 . Values were higher on trial day than the corresponding baseline values at time points 2, 4 and 12.

During trial 3, baseline values in the treatment group were between 31.1 ± 5.5 to 37.9 ± 12.2 and trial day values between 29.8 ± 10.8 to 39.2 ± 11.4 . In the control group, baseline values ranged from 28.0 ± 6.6 to 41.7 ± 9.9 and trial day values from 31.3 ± 6.7 to 35.4 ± 4.1 . No trend was observed for values being generally higher or lower at certain time points in either group.

Linear mixed models with escalating doses as fixed effects did not identify significant differences between the total sum of sedation scores in the treatment and control group [$P(F) = 0.527$]. Even during trial 2, the difference was not significant [$P(F) = 0.180$]. Similarly, the individual scores were not significantly influenced by escalating doses for stimulation with a clicker [$P(F) = 0.196$], crackling of a plastic bag [$P(F) = 0.442$] or

waving with the pink cloth [$P(F) = 0.915$]. Estimates for random effects for the total sum were: $\beta = 25.9$ [95% confidence intervals (CI) = 6.7, 100.6; standard error (SE) = 17.9], for clicker: $\beta = 7.7$ (95% CI = 2.9, 20.4; SE = 3.8) and for plastic bag: $\beta = 1.3$ (95% CI = 0.0, 126.8; SE = 3.0). Random effects were not estimated for visual stimulation with a cloth. For the total sum, 21.7% of variability was accounted to differences between time points. For stimulation with a clicker and plastic bag, time points as random effects were attributed to 32.6 and 4.7% of variability, respectively.

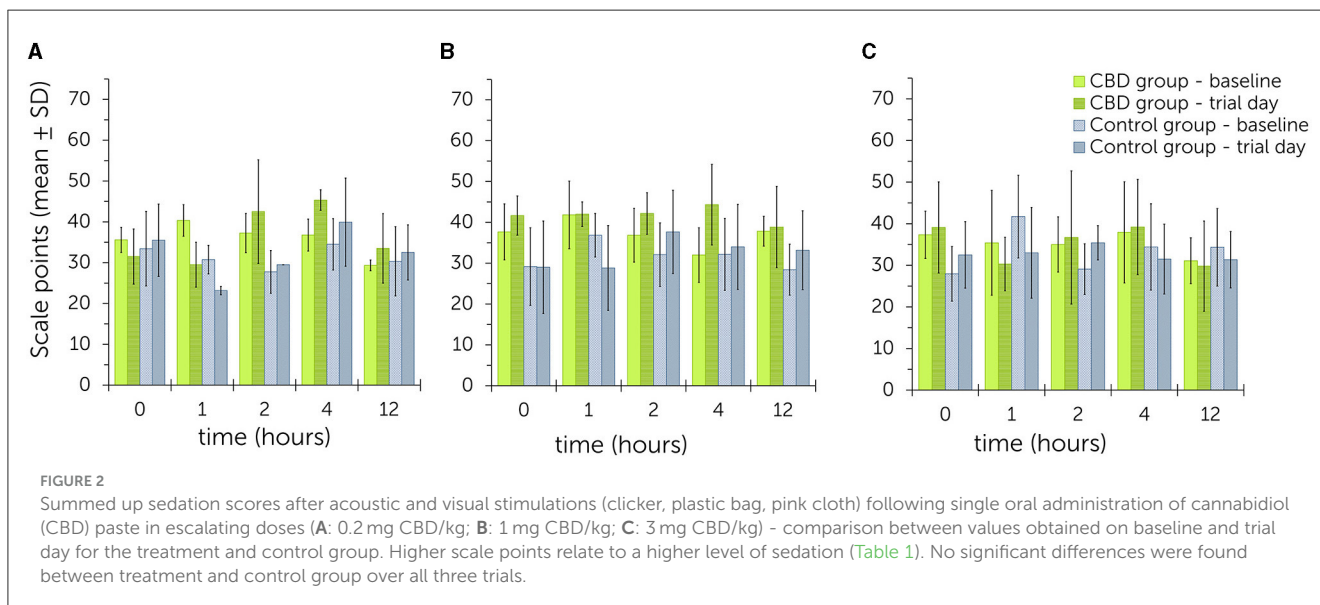
3.2.2 Facial expression scale

Examples for scoring of the facial expressions are shown in Supplementary Table S1. Graphical illustration of sedation scores is shown in Figure 3.

During trial 1, overall scores for baseline values ranged from 10.0 ± 0.0 to 12.0 ± 2.2 at all time points in the treatment group. Overall scores for trial day values ranged from 9.7 ± 0.5 to 10.3 ± 0.5 at all time points. All values were equal or lower on trial day than at baseline. In the control group, baseline values ranged from 8.5 ± 1.5 to 10.7 ± 0.9 and from 10.0 ± 0.0 to 12.7 ± 2.1 on trial day. All values were equal or higher on trial day than at baseline. In this trial, the most notable differences between baseline and trial day were found at time point 1 (treatment group: 12.0 ± 2.2 to 10.3 ± 0.5) and time point 12 (control group: 10.7 ± 0.9 to 12.7 ± 2.1).

During trial 2, baseline values in the treatment group were between 9.8 ± 0.6 to 10.7 ± 0.6 and trial day values between 10.0 ± 0.0 to 10.7 ± 0.5 . In the control group, baseline values ranged from 10.0 ± 0.0 to 10.7 ± 0.9 and trial day values from 10.0 ± 0.0 to 10.5 ± 0.7 . No trend was observed for values being generally higher or lower at certain time points in either group.

During trial 3, baseline values in the treatment group ranged from 10.0 ± 0.8 to 10.7 ± 0.7 and trial day values from 10.0 ± 0.0 to 10.4 ± 0.5 . In the control group, baseline values ranged from 10.0 ± 0.0 to 10.2 ± 0.9 and trial day values from 10.0 ± 0.0 to 10.4 ± 0.8 . No trend was observed for values being generally higher or lower at certain time points in either group.



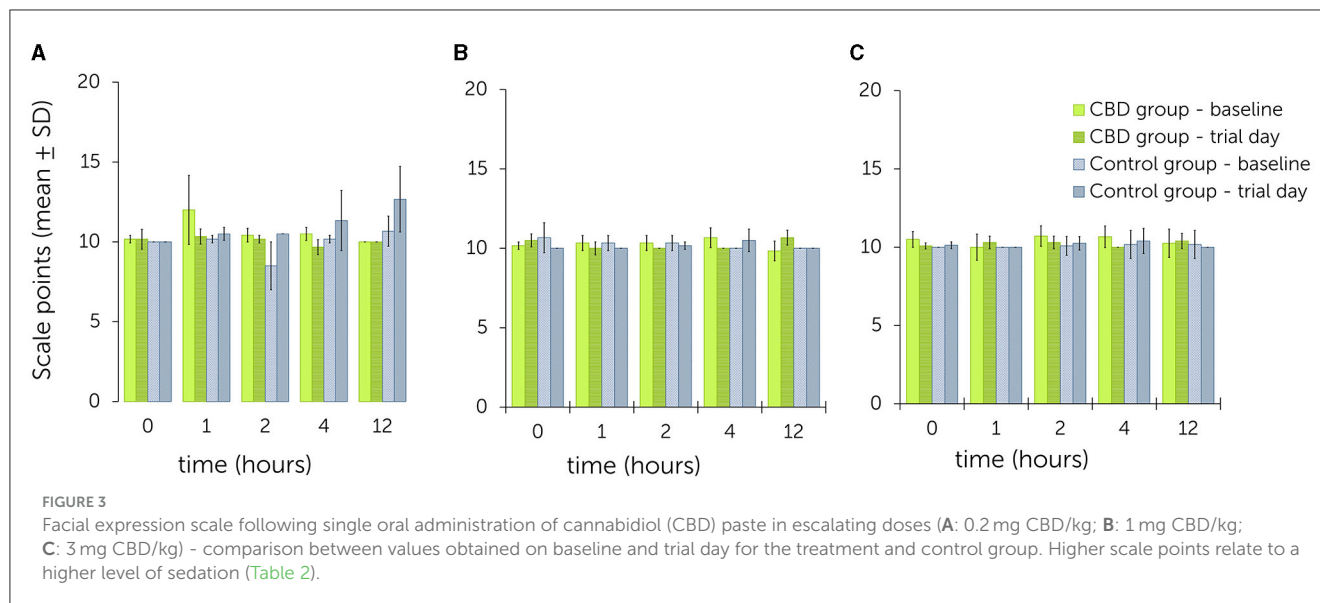


TABLE 4 Fixed effects estimates for the comparison of differences (Δ) between score levels reached on a facial expression scale on baseline and trial days [single oral administration of cannabidiol (CBD) paste in three escalating doses (0.2 mg CBD/kg; 1 mg CBD/kg; 3 mg CBD/kg)].

Parameter	Regression coefficient (β)	95% confidence intervals (CI)	Standard error (SE)	<i>p</i> -value
Δ Score levels (facial expression scale)				
Intercept	0.3	0.0, 0.7	0.2	0.077
Control group	Reference			
Trial 1 (0.2 mg CBD/kg)	-0.9	-1.6, -0.1	0.4	0.021
Trial 2 (1 mg CBD/kg)	-0.4	-1.1, 0.4	0.4	0.344
Trial 3 (3 mg CBD/kg)	-0.6	-1.2, 0.0	0.3	0.065

The linear mixed model did not identify a significant effect of escalating CBD doses on the facial expression scale when compared to the control group [$P(F) = 0.080$]. Considering the fixed effects estimates, a significant effect was evident between trial 1 and the control group ($p = 0.021$) (Table 4). The estimate for the random effects was $\beta = 0.1$ (95% CI = 0.0, 27.4; SE = 0.2) with 3.3% of variability attributed to differences between time points.

3.3 Heart rate and heart rate variability

3.3.1 Comparison between treatment and control group

Mean HR and HRV values are shown in Table 5. On trial days, the mean HR in the first 2 h post paste administration was between 42.1 ± 8.6 bpm to 45.4 ± 7.5 bpm in the treatment group, and between 41.3 ± 8.2 bpm to 44.4 ± 9.8 bpm in the control group.

RMSSD values ranged between 122.7 ± 48.8 ms and 152.9 ± 36.6 ms in the treatment group, and 137.1 ± 35.4 ms and 151.6 ± 29.3 ms in the control group. For SDNN, mean values were between 105.4 ± 22.8 ms and 163.1 ± 48.4 ms in the treatment group, and between 135.7 ± 64.4 ms and 156.8 ± 49.6 ms in the control group. Graphical representations

of mean HR, RMSSD and SDNN are shown in Figures 4–6 (trial days) and Supplementary Figures S4–S6 (baseline).

Statistical analysis using linear mixed models found that doses as fixed effects had no significant impact on HR [$P(F) = 0.139$], RMSSD [$P(F) = 0.104$] and SDNN [$P(F) = 0.202$]. A significant difference could not be identified even between the highest CBD dose (3 mg CBD/kg) and the control group (HR: $p = 0.377$; RMSSD: $p = 0.189$; SDNN: $p = 0.734$) (Table 6).

For HR, the estimate for the random effects was $\beta = 31.5$ (95% CI = 15.1, 65.7; SE = 11.8). Differences between time sections are accounted for 44.1% of variability. The RMSSD estimate was $\beta = 607.0$ (95% CI = 262.0, 1406.3; SE = 260.2) and 33.2% of variability was attributed to time sections. For SDNN, β was 1107.0 (95% CI = 456.3, 2685.8; SE = 500.6). Time sections were associated with 33.7% of variability.

3.3.2 Comparison between baseline and trial day within the treatment group

Mean HR values showed no trend indicating a consistent increase or decrease from baseline to trial day in the treatment group (Table 5). Mean RMSSD and SDNN values showed a consistent increase from baseline to trial day during all trials, except

TABLE 5 Mean \pm SD values for HR, RMSSD and SDNN values from the first 2 h after single oral cannabidiol (CBD) paste administration with corresponding baseline values. Due to technical issues, the trial 1 R-R-interval data are partly incomplete.

Parameter	Treatment group – baseline (mean \pm SD)	Treatment group – trial day (mean \pm SD)	Control group – baseline (mean \pm SD)	Control group – trial day (mean \pm SD)
HR (bpm)				
Trial 1 (0.2 mg CBD/kg)	30.2 \pm 2.9	45.4 \pm 7.5	no data	41.4 \pm 4.6
Trial 2 (1 mg CBD/kg)	45.3 \pm 7.0	43.3 \pm 4.1	43.2 \pm 7.2	41.3 \pm 8.2
Trial 3 (3 mg CBD/kg)	42.6 \pm 6.6	42.1 \pm 8.6	39.0 \pm 4.4	44.4 \pm 9.8
RMSSD (ms)				
Trial 1 (0.2 mg CBD/kg)	127.7 \pm 51.2	152.9 \pm 36.6	no data	151.6 \pm 29.3
Trial 2 (1 mg CBD/kg)	112.7 \pm 33.8	123.6 \pm 30.6	151.3 \pm 39.4	137.1 \pm 35.4
Trial 3 (3 mg CBD/kg)	113.8 \pm 40.0	122.7 \pm 48.8	151.0 \pm 61.7	140.9 \pm 48.2
SDNN (ms)				
Trial 1 (0.2 mg CBD/kg)	140.8 \pm 44.6	163.1 \pm 48.4	no data	156.8 \pm 49.6
Trial 2 (1 mg CBD/kg)	110.1 \pm 41.0	105.4 \pm 22.8	154.4 \pm 71.1	146.0 \pm 49.7
Trial 3 (3 mg CBD/kg)	104.6 \pm 44.7	131.0 \pm 61.1	121.5 \pm 38.5	135.7 \pm 64.4

SD, standard deviation; HR, heart rate; RMSSD, root mean square of successive R-R interval differences; SDNN, standard deviation of normal-to-normal R-R intervals; bpm, beats per minute; ms, milliseconds.

for a decrease in SDNN values during trial 2 (110.1 \pm 41.0 ms to 105.4 \pm 22.8 ms).

Examination of the differences between baseline and trial day values identified no significant effect for HR [$P(F) = 0.136$] over all three trials but found significant effects for RMSSD [$P(F) = 0.016$] and SDNN [$P(F) < 0.001$]. Both significant findings can be attributed to trial 1 and trial 3 (Table 7). Estimates for random effects for HR were: $\beta = 13.1$ (95% CI = 5.0, 34.1; SE = 6.4), for RMSSD: $\beta = 768.5$ (95% CI = 399.6, 1478.2; SE = 256.5) and for SDNN: $\beta = 1052.6$ (95% CI = 537.88, 2060.1; SE = 360.6). For HR, RMSSD and SDNN values, differences between time sections are accounted for 22.5%, 40.6% and 39.6% of variability, respectively.

4 Discussion

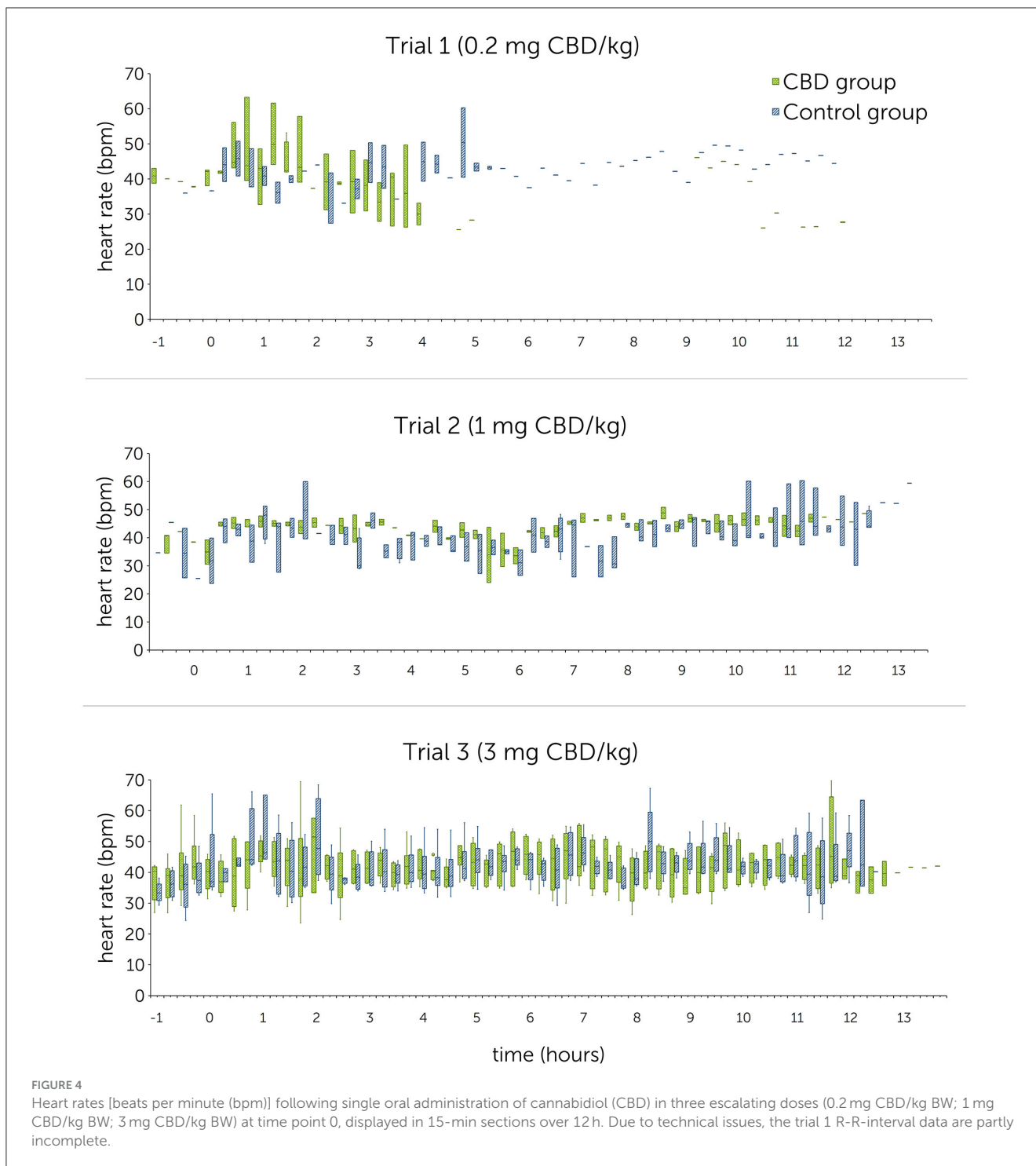
Investigation of stress parameters in healthy horses, including behavioral observations and heart rate monitoring, following oral administration of a CBD containing paste in escalating doses did not identify consistently significant differences when compared to a control group.

CBD products are marketed for a variety of conditions in animals including improving general wellbeing and having a calming and stress-relieving effect (3–8). Sedation is a reported side effect associated with CBD application in humans and dogs (30–34, 47). To assess sedation in horses, multiple scoring systems have been proposed but are mainly aimed at testing sedatives such as detomidine or acepromazine (43, 48, 49). As levels of sedation in this study were not pronounced and scoring based on established scales did not produce satisfying results, a previously described sedation scale (43) was adjusted to the behavior exhibited by the horses in the current study (37). The dose levels tested in this study (0.2 mg CBD/kg, 1 mg CBD/kg, 3 mg CBD/kg) did not

result in any significant difference in sedation scores after acoustic or visual stimulation compared to the control group. This is in agreement with a previous report where sedation levels were scored in horses following CBD administration (37). In this report, pellets containing 150 mg CBD (~ 0.29 mg CBD/kg) were fed over 56 days with no significant difference in sedation levels detected when compared to a control group. In humans, sedation was described as a side effect after daily oral intake of a total of 600 mg CBD over 6 weeks (47). Future studies may investigate whether higher dose administrations lead to more significant signs of sedation in horses.

Photographs were taken to assess the potential influence of CBD on equine facial expression. Existing scoring systems including FaceSed and Horse Grimace Scale (HGS) were modified to suit the purpose of the current report, as CBD administration did not produce sedation levels comparative to those depicted in the FaceSed scale (44, 45). Horses additionally displayed facial expressions described in the HGS, like strained mouth and chewing muscles. As the horses included in the current study did not undergo any painful procedures, similar expressions were interpreted as signs of stress. Expressions related to annoyance, such as pinned-back ears, were also exhibited. Only the modified scores of trial 1 (0.2 mg CBD/kg) were significantly different when compared between treatment and control group ($p = 0.021$). Score levels were higher at baseline than on trial day in the treatment group at time points 1, 2 and 4, whereas score levels in the control group were consistently lower at baseline than on trial day (Figure 3). As this result is the only significant event in this study part and comparisons with higher dose administrations did not produce significant results, its relevance should be interpreted with caution.

CBD reduces anxiety and stress by acting as a direct or indirect agonist on 5-HT_{1A}- and CB₁-receptors (10–14, 20). Stress



levels can be evaluated based on changes of heart rate and heart rate variability in horses (50–53). A comparatively lower HR and increased HRV values (RMSSD and SDNN) indicate an autonomic shift toward a parasympathetic dominance and therefore a reduction of stress (50, 52, 54). In rodents, one-time intraperitoneally injected CBD (10 mg/kg) has been shown to reduce the increase of HR and blood pressure in a stress inducing and fear conditioning setting, suggesting an anxiolytic effect similar to diazepam (24, 55). Another study identified a modest effect

of oral CBD (total dose: 30 mg) on resting HR and HRV in humans (29). The relevance for physiological functions with the shown effect is however questionable and should be evaluated with caution as the study design did not include a control group (29). Other studies in horses and dogs showed no influence of CBD on HR or HRV so far: One study in horses found no significant difference in HR during a novel object test between a treatment group fed 100 mg pelleted CBD (~ 0.2 mg CBD/kg) and a control group (36). In dogs, a treatment and a placebo

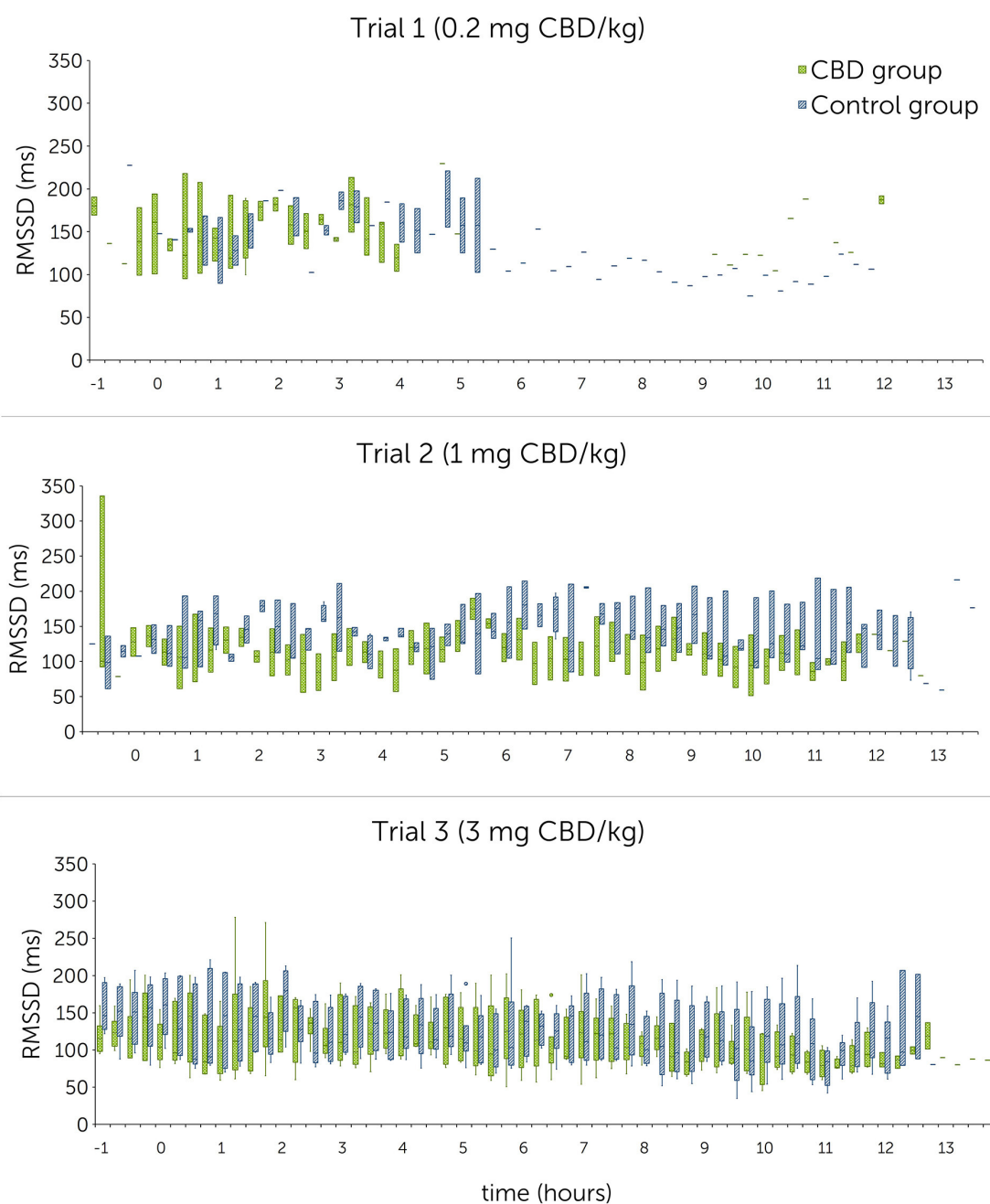


FIGURE 5

Root mean square of successive R-R interval differences (RMSSD) in milliseconds (ms) following single oral administration of cannabidiol (CBD) in three escalating doses (0.2 mg CBD/kg BW; 1 mg CBD/kg BW; 3 mg CBD/kg BW) at time point 0, displayed in 15-min sections over 12 h. Due to technical issues, the trial 1 R-R-interval data are partly incomplete.

group displayed similar HR and HRV values during a stress test. The dose tested here was 4 mg CBD/kg, administered orally every day over a period of 6 months (56). Similarly, dogs treated orally with 1.4 mg CBD/kg showed no significant changes in RMSSD and SDNN following a fear response test (57). To the best of the authors' knowledge, there are no studies investigating the effect of CBD on resting HR and HRV in healthy horses so far. Due to the short interval of stimulation, it was decided not to specifically analyze HR and HRV during sedation scoring including

acoustic and visual stimuli in the current study. HR and HRV compared over the first 2 h after paste administration identified non-significant differences between the treatment and control group in all trials. Comparison within the treatment group showed a consistent increase of the RMSSD compared between all three baseline and trial day values with a significant effect identified for trial 1 (0.2 mg CBD/kg) (Table 7). For SDNN, significant increases were detected for trial 1 and trial 3 (3 mg CBD/kg) (Table 7). These results point toward a decreased sympathetic and an increased

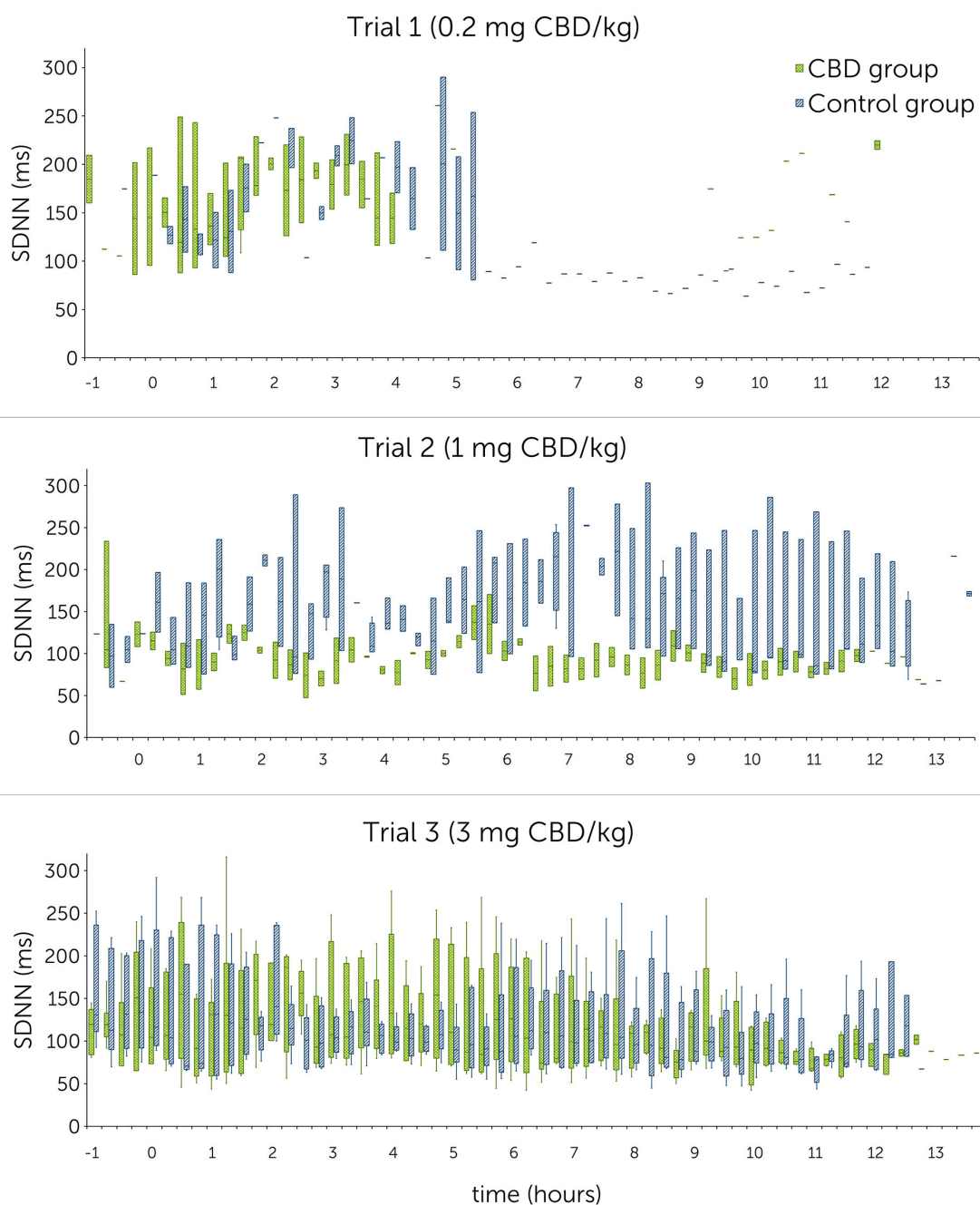


FIGURE 6

Normal-to-normal R-R intervals (SDNN) in milliseconds (ms) following single oral administration of cannabidiol (CBD) in three escalating doses (0.2 mg CBD/kg BW; 1 mg CBD/kg BW; 3 mg CBD/kg BW) at time point 0, displayed in 15-min sections over 12 h. Due to technical issues, the trial 1 R-R-interval data are partly incomplete.

parasympathetic tonus following CBD administration and support the hypothesized relaxing effect of CBD. However, as the 95% confidence intervals are large, results should still be interpreted with caution.

Cannabis and cannabinoids are FEI declared prohibited substances, with CBD and cannabidiolic acid (CBDA) listed as controlled medication, due to their possible psychotropic and analgesic properties (41). In this study, an influence of CBD in escalating dose levels on equine behavioral parameters could not

be confirmed, but it cannot be excluded that higher doses or administration over longer time periods would influence a horse's behavior. As horses in the current study were healthy and displayed a calm behavior throughout, the effect of CBD on stressed or anxious horses would be an additional point of interest.

Limitations of this study include the small sample size and the assessment of single administrations of one CBD containing product only. As horses were closely monitored and sedation levels were scored multiple times per day, a habituation effect

TABLE 6 Fixed effects estimates for comparison between treatment and control group of HR, RMSSD and SDNN values from the first 2 h following single oral administration of cannabidiol (CBD) paste in three escalating doses (0.2mg CBD/kg; 1mg CBD/kg; 3mg CBD/kg).

Parameter	Regression coefficient (β)	95% confidence intervals (CI)	Standard error (SE)	p -value
HR (bpm)				
Intercept	43.7	41.4, 46.0	1.1	<0.001
Control group	Reference			
Trial 1 (0.2 mg CBD/kg)	2.6	-1.4, 6.5	2.0	0.196
Trial 2 (1 mg CBD/kg)	0.5	-4.1, 5.1	2.3	0.826
Trial 3 (3 mg CBD/kg)	-1.5	-4.8, 1.8	1.7	0.377
RMSSD (ms)				
Intercept	134.6	123.4, 145.8	5.6	<0.001
Control group	Reference			
Trial 1 (0.2 mg CBD/kg)	11.6	-8.3, 31.6	10.1	0.251
Trial 2 (1 mg CBD/kg)	2.9	-20.5, 26.2	11.8	0.809
Trial 3 (3 mg CBD/kg)	-11.0	-27.5, 5.5	8.3	0.189
SDNN (ms)				
Intercept	135.8	120.7, 150.8	7.5	<0.001
Control group	Reference			
Trial 1 (0.2 mg CBD/kg)	18.1	-8.7, 44.9	13.5	0.184
Trial 2 (1 mg CBD/kg)	-12.1	-43.3, 19.1	15.8	0.445
Trial 3 (3 mg CBD/kg)	-3.8	-26.0, 18.4	11.2	0.734

HR, heart rate; RMSSD, root mean square of successive R-R interval differences; SDNN, standard deviation of normal-to-normal R-R intervals; bpm, beats per minute; ms, milliseconds.

TABLE 7 Fixed effects estimates for comparison within the treatment group of HR, RMSSD and SDNN values from the first 2 h between baseline and following single oral administration of cannabidiol (CBD) paste in three escalating doses (0.2mg CBD/kg; 1mg CBD/kg; 3mg CBD/kg).

Parameter	Regression coefficient (β)	95% confidence intervals (CI)	Standard error (SE)	p -value
HR (bpm)				
Intercept	42.5	40.6, 44.4	1.0	<0.001
Baseline values	Reference			
Trial 1 (0.2 mg CBD/kg)	3.4	0.3, 6.6	1.6	0.034
Trial 2 (1 mg CBD/kg)	0.9	-2.7, 4.5	1.8	0.627
Trial 3 (3 mg CBD/kg)	-0.4	-2.9, 2.1	1.3	0.766
RMSSD (ms)				
Intercept	118.4	107.2, 120.5	5.6	<0.001
Baseline values	Reference			
Trial 1 (0.2 mg CBD/kg)	25.0	8.8, 41.1	8.2	0.003
Trial 2 (1 mg CBD/kg)	16.6	-1.8, 35.1	9.3	0.077
Trial 3 (3 mg CBD/kg)	7.7	-5.1, 20.5	6.5	0.233
SDNN (ms)				
Intercept	112.4	99.2, 125.6	6.6	<0.001
Baseline values	Reference			
Trial 1 (0.2 mg CBD/kg)	40.1	20.8, 59.4	9.8	<0.001
Trial 2 (1 mg CBD/kg)	3.0	-19.0, 25.1	11.1	0.785
Trial 3 (3 mg CBD/kg)	21.3	6.0, 36.6	7.7	0.007

HR, heart rate; RMSSD, root mean square of successive R-R interval differences; SDNN, standard deviation of normal-to-normal R-R intervals; bpm, beats per minute; ms, milliseconds.

cannot be excluded. Signs of stress or annoyance as evident on the photographs may partially result from repeated testing. However, as treatment and control groups underwent the exact same protocol, the effect of repeated testing was deemed negligible as it was concluded that it would have occurred similarly in both groups.

5 Conclusions

The analysis of stress parameters did not identify consistently significant effects of orally administered CBD on levels of sedation, the resting heart rate or heart rate variability in horses. Escalating doses (0.2 mg CBD/kg to 3 mg CBD/kg) did not result in a significant reduction of the heart rate, or increased sedation or relaxation. Oral administration of CBD containing paste proved to be well-tolerated and did not cause any side effects. Further research is required to determine specific indications for the use of CBD products in horses.

Data availability statement

The raw data supporting the conclusions of this article will be made available by the authors, without undue reservation.

Ethics statement

The animal study was approved by the authority for licensing and notification procedures for animal experiments (LAVG) in Brandenburg, Germany (AZ: 2347-12-2021). The study was conducted in accordance with the local legislation and institutional requirements.

Author contributions

FE: Conceptualization, Data curation, Formal analysis, Investigation, Methodology, Project administration, Software, Validation, Visualization, Writing—original draft. AE: Conceptualization, Data curation, Formal analysis, Funding acquisition, Investigation, Methodology, Project administration, Resources, Supervision, Validation, Writing—review & editing. KCJ: Formal analysis, Methodology, Software, Validation, Writing—review & editing. NB: Conceptualization, Data curation, Methodology, Project administration, Writing—review & editing. HP: Data curation, Formal analysis, Investigation, Methodology, Writing—review & editing. WB: Conceptualization, Methodology, Project administration, Supervision, Writing—review & editing. CL: Conceptualization, Funding acquisition, Methodology, Project administration, Resources, Supervision, Writing—review & editing. MW: Conceptualization, Investigation, Methodology, Project administration, Resources, Supervision, Writing—review & editing.

Funding

The author(s) declare financial support was received for the research, authorship, and/or publication of this article. The study was funded by the Freie Universität Berlin, the German Equestrian Federation (FN) and the Herosan healthcare GmbH. Herosan healthcare GmbH was not involved in the study design, collection, analysis, interpretation of data, the writing of this article or the decision to submit it for publication. We acknowledge support by the Open Access Publication Fund of the Freie Universität Berlin.

Acknowledgments

The authors would like to sincerely thank Dr. Marc Machnik and Dr. Ina Schenk for their extensive contributions to this study and Franziska Berger, Julia Bolk, Lena Haas, Katharina Jessat, Anja Kühnel, Dr. Jenny Ries, Clara Schubert, and Elisa Zimmermann for their support with horse handling and laboratory work. We also thank the whole team at the Equine Center Bad Saarow, especially Prof. Dr. Johannes Handler, for providing their facilities and support during the practical part of the study. The authors further acknowledge the support of Conny Pint and Daniela Wimmer and sincerely thank Philine Bank for initiating the project.

Conflict of interest

The authors declare that the research was conducted in the absence of any commercial or financial relationships that could be construed as a potential conflict of interest. This study received funding from Herosan healthcare GmbH.

The funder was not involved in the study design, collection, analysis, interpretation of data, the writing of this article or the decision to submit it for publication. All authors declare to have full control over the data and no other competing interests.

Publisher's note

All claims expressed in this article are solely those of the authors and do not necessarily represent those of their affiliated organizations, or those of the publisher, the editors and the reviewers. Any product that may be evaluated in this article, or claim that may be made by its manufacturer, is not guaranteed or endorsed by the publisher.

Supplementary material

The Supplementary Material for this article can be found online at: <https://www.frontiersin.org/articles/10.3389/fvets.2023.1305868/full#supplementary-material>

References

- Corsetti S, Borruso S, Malandrucchio L, Spallucci V, Maragliano L, Perino R, et al. Cannabis sativa L. may reduce aggressive behaviour towards humans in shelter dogs. *Sci Rep.* (2021) 11:2773. doi: 10.1038/s41598-021-82439-2
- Casajuana Köguel C, López-Pelayo H, Balcells-Olivero MM, Colom J, Gual A. Constituyentes psicoactivos del cannabis y sus implicaciones clínicas: una revisión sistemática. *Adicciones.* (2018) 30:140–51. doi: 10.20882/adicciones.858
- Potschka H, Bhatti SF, Tipold A, McGrath S. Cannabidiol in canine epilepsy. *Vet J.* (2022) 12:105913. doi: 10.1016/j.tvjl.2022.105913
- Corsato Alvarenga I, Panickar KS, Hess H, McGrath S. Scientific validation of cannabidiol for management of dog and cat diseases. *Annu Rev Anim Biosci.* (2023) 11:227–46. doi: 10.1146/annurev-animal-081122-070236
- Miranda-Cortés A, Mota-Rojas D, Crosignani-Outeda N, Casas-Alvarado A, Martínez-Burnes J, Olmos-Hernández A, et al. The role of cannabinoids in pain modulation in companion animals. *Front Vet Sci.* (2022) 9:1050884. doi: 10.3389/fvets.2022.1050884
- Mogi C, Yoshida M, Kawano K, Fukuyama T, Arai T. Effects of cannabidiol without delta-9-tetrahydrocannabinol on canine atopic dermatitis: a retrospective assessment of 8 cases. *Can Vet J.* (2022) 63:423–6.
- McGrath S, Bartner LR, Rao S, Packer RA, Gustafson DL. Randomized blinded controlled clinical trial to assess the effect of oral cannabidiol administration in addition to conventional antiepileptic treatment on seizure frequency in dogs with intractable idiopathic epilepsy. *J Am Vet Med Assoc.* (2019) 254:1301–8. doi: 10.2460/javma.254.11.1301
- Gugliandolo E, Licata P, Peritore AF, Siracusa R, D'Amico R, Cordaro M, et al. Effect of cannabidiol (CBD) on canine inflammatory response: an ex vivo study on lps stimulated whole blood. *Vet Sci.* (2021) 8:185. doi: 10.3390/vetsci8090185
- Moltke J, Hindocha C. Reasons for cannabidiol use: a cross-sectional study of CBD users, focusing on self-perceived stress, anxiety, and sleep problems. *J Cannabis Res.* (2021) 3:5. doi: 10.1186/s42238-021-00061-5
- Izzo AA, Borrelli F, Capasso R, Di Marzo V, Mechoulam R. Non-psychoactive plant cannabinoids: new therapeutic opportunities from an ancient herb. *Trends Pharmacol Sci.* (2009) 30:515–27. doi: 10.1016/j.tips.2009.07.006
- Campos AC, Moreira FA, Gomes FV, Del Bel EA, Guimarães FS. Multiple mechanisms involved in the large-spectrum therapeutic potential of cannabidiol in psychiatric disorders. *Philos Trans R Soc Lond B Biol Sci.* (2012) 367:3364–78. doi: 10.1098/rstb.2011.0389
- Blessing EM, Steenkamp MM, Manzanera J, Marmar CR. Cannabidiol as a potential treatment for anxiety disorders. *Neurotherapeutics.* (2015) 12:825–36. doi: 10.1007/s13311-015-0387-1
- Fogaça MV, Campos AC, Coelho LD, Duman RS, Guimarães FS. The anxiolytic effects of cannabidiol in chronically stressed mice are mediated by the endocannabinoid system: Role of neurogenesis and dendritic remodeling. *Neuropharmacology.* (2018) 135:22–33. doi: 10.1016/j.neuropharm.2018.03.001
- Fogaça MV, Campos AC, Guimarães FS. “Cannabidiol and 5-HT1A receptors,” in *Neuropathology of Drug Addictions and Substance Misuse*, ed V. R. Preedy (Amsterdam: Elsevier) (2016), 749–59.
- Leweke FM, Piomelli D, Pahlisch F, Muhl D, Gerth CW, Hoyer C, et al. Cannabidiol enhances anandamide signaling and alleviates psychotic symptoms of schizophrenia. *Transl Psychiatry.* (2012) 2:e94. doi: 10.1038/tp.2012.15
- Watanabe K, Kayano Y, Matsunaga T, Yamamoto I, Yoshimura H. Inhibition of anandamide amidase activity in mouse brain microsomes by cannabinoids. *Biol Pharm Bull.* (1996) 19:1109–11. doi: 10.1248/bpb.19.1109
- Di Marzo V, Bisogno T, Petrecellis L de Anandamide: some like it hot. *Trends Pharmacol Sci.* (2001) 22:346–9. doi: 10.1016/S0165-6147(00)01712-0
- Riebe CJ, Pamplona FA, Kamprath K, Wotjak CT. Fear relief-toward a new conceptual frame work and what endocannabinoids gotta do with it. *Neuroscience.* (2012) 204:159–85. doi: 10.1016/j.neuroscience.2011.11.057
- McLaughlin RJ, Hill MN, Gorzalka BB. A critical role for prefrontocortical endocannabinoid signaling in the regulation of stress and emotional behavior. *Neurosci Biobehav Rev.* (2014) 42:116–31. doi: 10.1016/j.neubiorev.2014.02.006
- McPartland JM, Duncan M, Di Marzo V, Pertwee RG. Are cannabidiol and $\Delta(9)$ -tetrahydrocannabinol negative modulators of the endocannabinoid system? A systematic review. *Br J Pharmacol.* (2015) 172:737–53. doi: 10.1111/bph.12944
- Howlett AC, Scott DK, Wilken GH. Regulation of adenylate cyclase by cannabinoid drugs. Insights based on thermodynamic studies. *Biochem Pharmacol.* (1989) 38:3297–304. doi: 10.1016/0006-2952(89)90628-X
- Granjeiro EM, Gomes FV, Guimarães FS, Corrêa FM, Resstel LB. Effects of intracisternal administration of cannabidiol on the cardiovascular and behavioral responses to acute restraint stress. *Pharmacol Biochem Behav.* (2011) 99:743–8. doi: 10.1016/j.pbb.2011.06.027
- Gomes FV, Resstel LB, Guimarães FS. The anxiolytic-like effects of cannabidiol injected into the bed nucleus of the stria terminalis are mediated by 5-HT1A receptors. *Psychopharmacology.* (2011) 213:465–73. doi: 10.1007/s00213-010-2036-z
- Resstel LB, Tavares RF, Lisboa SF, Joca SR, Corrêa FM, Guimarães FS. 5-HT1A receptors are involved in the cannabidiol-induced attenuation of behavioural and cardiovascular responses to acute restraint stress in rats. *Br J Pharmacol.* (2009) 156:181–8. doi: 10.1111/j.1476-5381.2008.00046.x
- Crippa JA, Derenusson GN, Ferrari TB, Wichert-Ana L, Duran FL, Martin-Santos R, et al. Neural basis of anxiolytic effects of cannabidiol (CBD) in generalized social anxiety disorder: a preliminary report. *J Psychopharmacol.* (2011) 25:121–30. doi: 10.1177/0269881110379283
- Shallcross J, Hámor P, Bechard AR, Romano M, Knackstedt L, Schwendt M. The divergent effects of CDPBB and cannabidiol on fear extinction and anxiety in a predator scent stress model of PTSD in rats. *Front Behav Neurosci.* (2019) 13:91. doi: 10.3389/fnbeh.2019.00091
- Zieba J, Sinclair D, Sebree T, Bonn-Miller M, Gutterman D, Siegel S, et al. Cannabidiol (CBD) reduces anxiety-related behavior in mice via an FMRP-independent mechanism. *Pharmacol Biochem Behav.* (2019) 181:93–100. doi: 10.1016/j.pbb.2019.05.002
- Fusar-Poli P, Crippa JA, Bhattacharyya S, Borgwardt SJ, Allen P, Martin-Santos R, et al. Distinct effects of $\Delta(9)$ -tetrahydrocannabinol and cannabidiol on neural activation during emotional processing. *Arch Gen Psychiatry.* (2009) 66:95–105. doi: 10.1001/archgenpsychiatry.2008.519
- Williams NN, Ewell TR, Abbotts KS, Harms KJ, Woelfel KA, Dooley GP, et al. Comparison of five oral cannabidiol preparations in adult humans: pharmacokinetics, body composition, and heart rate variability. *Pharmaceuticals.* (2021) 14:35. doi: 10.3390/ph14010035
- Dos Santos RG, Guimarães FS, Crippa JA, Hallak JE, Rossi GN, Rocha JM, et al. Serious adverse effects of cannabidiol (CBD): a review of randomized controlled trials. *Expert Opin Drug Metab Toxicol.* (2020) 16:517–26. doi: 10.1080/17425255.2020.1754793
- Dos Santos RG, Hallak JE, Crippa JA. Neuropharmacological effects of the main phytocannabinoids: a narrative review. *Adv Exp Med Biol.* (2021) 1264:29–45. doi: 10.1007/978-3-030-57369-0_3
- Kogan LR, Hellyer PW, Robinson NG. Consumers' perceptions of hemp products for animals. *J Am Holistic Vet Med Assoc.* (2016) 42:40–8.
- Kogan L, Schoenfeld-Tacher R, Hellyer P, Rishniw M. US veterinarians' knowledge, experience, and perception regarding the use of cannabidiol for canine medical conditions. *Front Vet Sci.* (2018) 5:338. doi: 10.3389/fvets.2018.00338
- Kogan LR, Hellyer PW, Silcox S, Schoenfeld-Tacher R. Canadian dog owners' use and perceptions of cannabis products. *Can Vet J.* (2019) 60:749–55.
- Morris EM, Kitts-Morgan SE, Spangler DM, Gebert J, Vanzant ES, McLeod KR, et al. Feeding cannabidiol (CBD)-containing treats did not affect canine daily voluntary activity. *Front Vet Sci.* (2021) 8:645667. doi: 10.3389/fvets.2021.645667
- Draeger A, Thomas E, Jones K, Godwin P, Davis A, Porr S. 81 Cannabidiol in the horse: Effects on movement and reactivity. *J Equine Vet Sci.* (2021) 100:103544. doi: 10.1016/j.jevs.2021.103544
- St Blanc MP, Chapman AM, Keowen ML, Garza F, Liu C-C, Gray L, et al. Effects of a supplement containing cannabidiol (CBD) on sedation and ataxia scores and health. *J Equine Vet Sci.* (2022) 117:104085. doi: 10.1016/j.jevs.2022.104085
- Ryan D, McKemie DS, Kass PH, Puschner B, Knych HK. Pharmacokinetics and effects on arachidonic acid metabolism of low doses of cannabidiol following oral administration to horses. *Drug Test Anal.* (2021) 13:1305–17. doi: 10.1002/dta.3028
- Cunha RZ, Felisardo LL, Salamaña G, Marchioni GG, Neto OI, Chiochetti R. The use of cannabidiol as a novel treatment for oral stereotypic behaviour (crib-biting) in a horse. *Vet Anim Sci.* (2023) 19:100289. doi: 10.1016/j.vas.2023.100289
- Ellis KL, Contino EK. Treatment using cannabidiol in a horse with mechanical allodynia. *Equine Vet Educ.* (2021) 33:168. doi: 10.1111/evve.13168
- Fédération Equestre Internationale. *FEI Clean Sport - Prohibited Substances Database.* (2022). Available online at: <https://inside.fei.org/content/anti-doping-rules> (accessed June 23, 2022).
- Eichler F, Pozniak B, Machnik M, Schenk I, Wingender A, Baudisch N, et al. Pharmacokinetic modelling of orally administered cannabidiol and implications for medication control in horses. *Front Vet Sci.* (2023) 10:1234551. doi: 10.3389/fvets.2023.1234551
- Poller C, Hopster K, Rohn K, Kästner SB. Nociceptive thermal threshold testing in horses - effect of neuroleptic sedation and neuroleptanalgesia at different stimulation sites. *BMC Vet Res.* (2013) 9:135. doi: 10.1186/1746-6148-9-135
- Oliveira AR de, Gozalo-Marcilla M, Ringer SK, Schaulviere S, Fonseca MW, Esteves Trindade PH, et al. Development and validation of the facial scale (FaceSed) to evaluate sedation in

- horses. *PLoS ONE*. (2021) 16:e0251909. doi: 10.1371/journal.pone.0251909
45. Dalla Costa E, Minero M, Lebelt D, Stucke D, Canali E, Leach MC. Development of the Horse Grimace Scale (HGS) as a pain assessment tool in horses undergoing routine castration. *PLoS ONE*. (2014) 9:e92281. doi: 10.1371/journal.pone.0092281
46. Younes M, Robert C, Barrey E, Cottin F. Effects of age, exercise duration, and test conditions on heart rate variability in young endurance horses. *Front Physiol*. (2016) 7:155. doi: 10.3389/fphys.2016.00155
47. Boggs DL, Surti T, Gupta A, Gupta S, Niciu M, Pittman B, et al. The effects of cannabidiol (CBD) on cognition and symptoms in outpatients with chronic schizophrenia a randomized placebo controlled trial. *Psychopharmacology*. (2018) 235:1923–32. doi: 10.1007/s00213-018-4885-9
48. Oliveira AR de, Gozalo-Marcilla M, Ringer SK, Schauvliege S, Fonseca MW, Trindade PH, et al. development, validation, and reliability of a sedation scale in horses (EquiSed). *Front Vet Sci*. (2021) 8:611729. doi: 10.3389/fvets.2021.611729
49. Schauvliege S, Cuypers C, Michielsens A, Gasthuys F, Gozalo-Marcilla M. How to score sedation and adjust the administration rate of sedatives in horses: a literature review and introduction of the Ghent Sedation Algorithm. *Vet Anaesth Analg*. (2019) 46:4–13. doi: 10.1016/j.vaa.2018.08.005
50. Lewinski M. von, Biau S, Erber R, Ille N, Aurich J, Faure J-M, et al. Cortisol release, heart rate and heart rate variability in the horse and its rider: different responses to training and performance. *Vet J*. (2013) 197:229–32. doi: 10.1016/j.tvjl.2012.12.025
51. König von Borstel U, Euent S, Graf P, König S, Gauly M. Equine behaviour and heart rate in temperament tests with or without rider or handler. *Physiol Behav*. (2011) 104:454–63. doi: 10.1016/j.physbeh.2011.05.010
52. Visser EK, van Reenena CG, van der Werf JTN, Schilder MBH, Knaap JH, Barneveld A, et al. Heart rate and heart rate variability during a novel object test and a handling test in young horses. *Physiol Behav*. (2002) 76:289–96. doi: 10.1016/S0031-9384(02)0698-4
53. Visser EK, van Reenen CG, Rundgren M, Zetterqvist M, Morgan K, Blokhuis HJ. Responses of horses in behavioural tests correlate with temperament assessed by riders. *Equine Vet J*. (2003) 35:176–83. doi: 10.2746/042516403776114108
54. Lenoir A, Trachsel DS, Younes M, Barrey E, Robert C. Agreement between electrocardiogram and heart rate meter is low for the measurement of heart rate variability during exercise in young endurance horses. *Front Vet Sci*. (2017) 4:170. doi: 10.3389/fvets.2017.00170
55. Resstel LB, Joca SR, Moreira FA, Corrêa FM, Guimarães FS. Effects of cannabidiol and diazepam on behavioral and cardiovascular responses induced by contextual conditioned fear in rats. *Behav Brain Res*. (2006) 172:294–8. doi: 10.1016/j.bbr.2006.05.016
56. Hunt AB, Flint HE, Logan DW, King T, A. single dose of cannabidiol (CBD) positively influences measures of stress in dogs during separation and car travel. *Front Vet Sci*. (2023) 10:1112604. doi: 10.3389/fvets.2023.1112604
57. Morris EM, Kitts-Morgan SE, Spangler DM, McLeod KR, Costa JH, Harmon DL. The impact of feeding cannabidiol (CBD) containing treats on canine response to a noise-induced fear response test. *Front Vet Sci*. (2020) 7:569565. doi: 10.3389/fvets.2020.569565