

## Suggestions for metadata description of Microclimate Stations - FUB

### General information

Attribute	
Institution name	Institute of Meteorology, Freie Universität Berlin
Institution code	FU-IFM
Reference	Dr. Ines Langer, Prof.Dr. Uwe Ulbrich, Prof.Dr. Henning Rust
Copyright	Public domain cc 0
Description document	File name of metadata sheet (s. above)
URL	<a href="http://www.geo.fu-berlin.de/met/ag/Stadtklima/index.html">http://www.geo.fu-berlin.de/met/ag/Stadtklima/index.html</a>
Conventions	CF-1.6
Quality level	1111

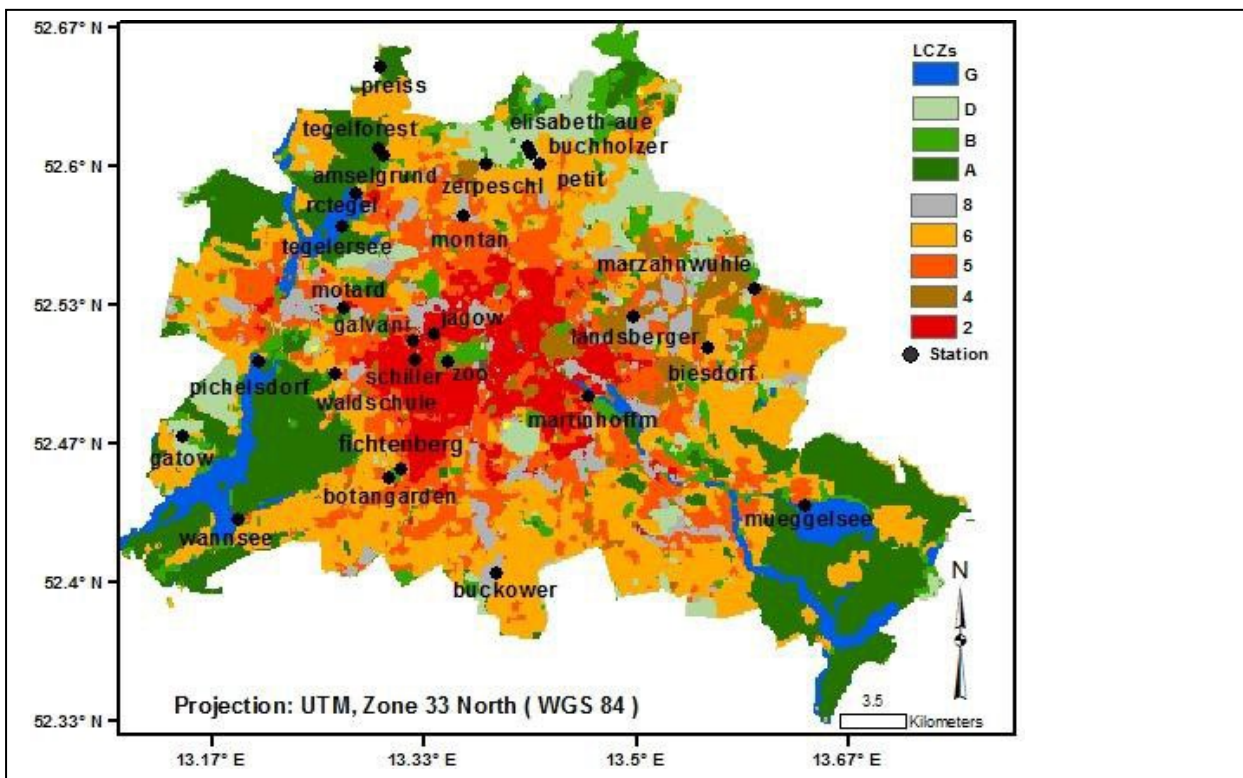


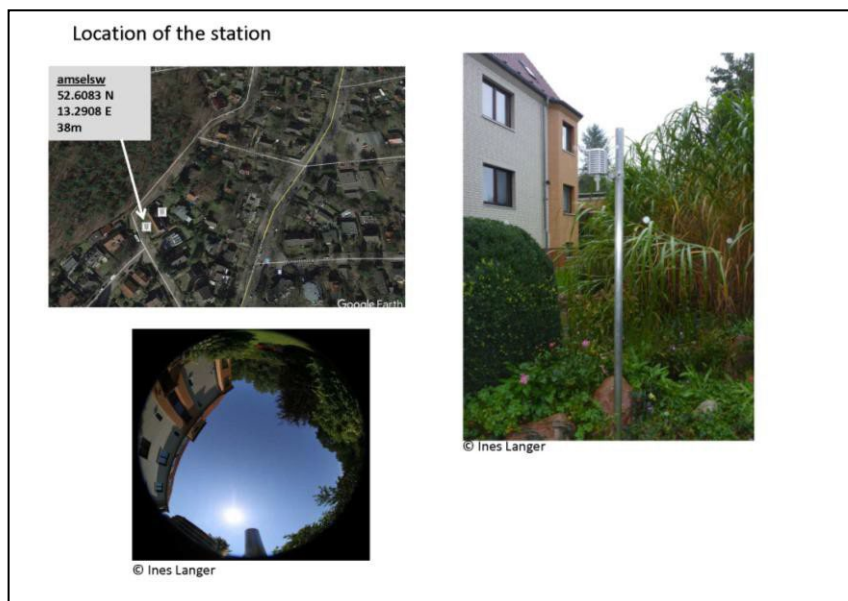
Figure 1 Local climate zone of Berlin and the corresponding meteorological stations (<https://www.geo.fu-berlin.de/met/ag/Stadtklima/FUMiNet-OpenStreetMap/index.html>)

## **Index of contents**

<b>No</b>	<b>Station</b>	<b>page</b>
1.	amselsw	3
2.	tegelforest	5
3.	preissconif	7
4.	rctegel	9
5.	zerpensch	11
6.	montan	13
7.	buchholzer	15
8.	elisabethaue	17
9.	petit	19
10.	motard	21
11.	waldschule	23
12.	schiller	25
13.	galvani	27
14.	zoo	29
15.	landsberger	31
16.	biesdorf	33
17.	buckower	35
18.	martinhoffm	37

## **Site documentation- amselsw**

The station amselsw (52.6083 N, 13.2908E, 39.5m) north of the city in the district Hermsdorf/Reinickendorf is located 500m from the Hermsdorfer Damm opposite the forest 'Tegeler Forest'. The temperature/humidity sensor stand in the east direction in front of a 23m high building situated in an irrigated garden.



### **Station-01**

<b>Attribute</b>	<b>Format</b>	<b>Example</b>
Station name		amselsw
Number (optional)		01
Lon (WGS-84 ellipsoid and datum)	At least four decimal digits	52.6083
Lat (WGS-84 ellipsoid and datum)	At least four decimal digits	13.2908
Elevation (m a.m.s.l.)		39.5
Address (if available)		Amselgrund 11, 13467 Berlin
City		Berlin
Country		Germany
Sky view factor (optional)		0.351
Local Climate Zone (optional)		6

### **Instrument- Temperature**

<b>Attribute</b>	<b>Format</b>	<b>Example</b>
Device model name		12653657
Manufacturer		Rotronic
Serial number		0020085827
Sensor class		Pt100
Sensor number (optional)	Two digits	15-0271148979
Measurement height (m a.g.l.)		2
Sensor resolution		0.01
Sensor accuracy		0.1
Measurement range		233.15-333.15
Radiation housing	1/0 (true/false)	1
Active ventilation	1/0 (true/false)	0
Last calibration	YYYYMMDD	20160411
Calibration parameters	Param1=..., param2=..., ...	0.02

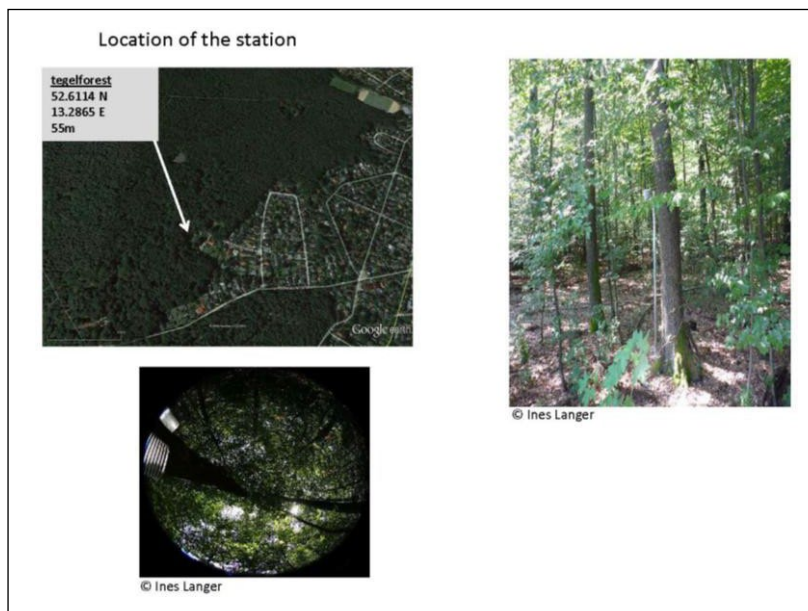
<b>Variable</b>		
Standard name (CF conventions)		air_temperature
Long name (optional)		Air temperature
Variable code (CF conventions)		T
Unit (CF conventions, SI)		°C
Lowest valid value		40
Highest valid value		-60
Missing value		NaN

#### **Instrument- Relative humidity**

<b>Attribute</b>	<b>Format</b>	<b>Example</b>
Device model name		12653657
Manufacturer		Rotronic
Serial number		0020085827
Sensor class		HC2-S3
Sensor number (optional)	Two digits	15-0271148979
Measurement height (m a.g.l.)		2
Sensor resolution		0.01
Sensor accuracy		±0.8%/ 296.15
Measurement range		0-100
Radiation housing	1/0 (true/false)	1
Active ventilation	1/0 (true/false)	0
Last calibration	YYYYMMDD	20160411
Calibration parameters	Param1=..., param2=..., ...	0.5
<b>Variable</b>		
Standard name (CF conventions)		relative humidity
Variable code (CF conventions)		RH
Unit (CF conventions, SI)		%
Lowest valid value		0
Highest valid value		100
Missing value		NaN
<b>Time</b>	<b>Format</b>	<b>Example</b>
Start date and time	YYYYMMDD hh:mm[:ss] (UTC)	20160823 19:00
End date and time	YYYYMMDD hh:mm[:ss] (UTC)	current
Interval length		30
Interval unit	a, mon, d, h, m, s, ms	min
Aggregation method	mean, max, min, none, ...	mean
Samples (no. of samples per interval)		6

## Site documentation- tegelforest

The station tegelforest (52.6114 N, 13.2865 E, 55m) north of the city in the district Hermsdorf/Reinickendorf is located in the forest next to an old beech grove. This station has a distance of 1.28km, to the station tegelforoff (Station- TH 07). The local difference of these two stations are that the station tegelforest stands between old beech trees and tegelforoff is located at a forest glade.



### Station -04

Attribute	Format	Example
Station name		tegelforest
Number (optional)		04
Lon (WGS-84 ellipsoid and datum)	At least four decimal digits	52.6114
Lat (WGS-84 ellipsoid and datum)	At least four decimal digits	13.2865
Elevation (m a.m.s.l.)		55 m
Address (if available)		Ehrenpfortensteig 9, 13467 Berlin
City		Berlin
Country		Germany
Sky view factor (optional)		0.039
Local Climate Zone (optional)		A
Documentation of station history (optional)		New station since 24.10.2016

### Instrument- Temperature

Attribute	Format	Example
Device model name		12653639
Manufacturer		Rotronic
Serial number		0020086738
Sensor class		Pt100
Sensor number (optional)	Two digits	15-0292238823
Measurement height (m a.g.l.)		2

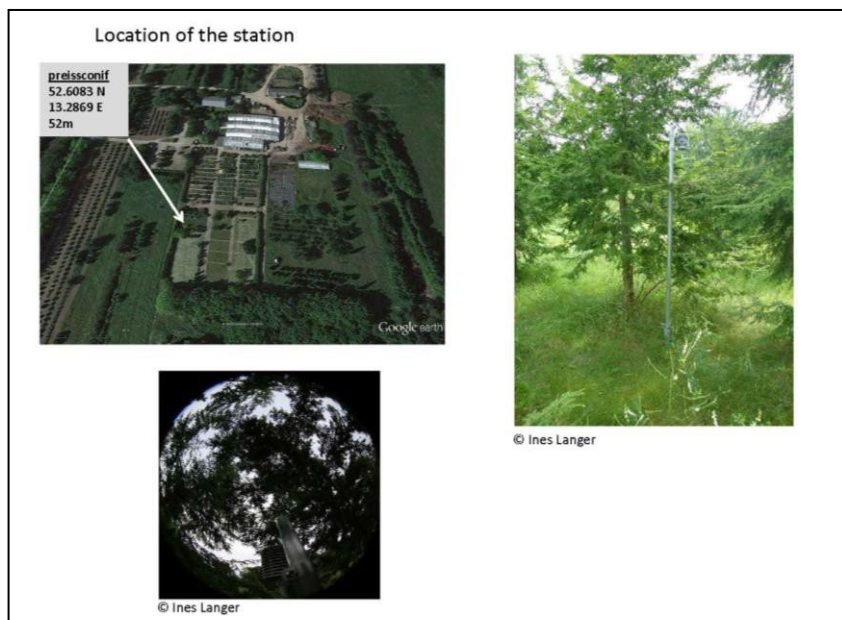
Sensor resolution		0.1
Measurement range		213.15 – 333.15
Radiation housing	1/0 (true/false)	1
Active ventilation	1/0 (true/false)	0
Last calibration	YYYYMMDD	20160617
Calibration parameters	Param1=..., param2=..., ...	0.02
<b>Variable</b>	<b>Format</b>	<b>Example</b>
Standard name (CF conventions)		air_temperature
Long name (optional)		Air temperature
Variable code (CF conventions)		T
Unit (CF conventions, SI)		°C
Lowest valid value		40
Highest valid value		-60
Missing value		NaN

#### Instrument- Relative humidity

Attribute	Format	Example
Device model name		12653639
Manufacturer		Rotronic
Serial number		0020086738
Sensor class		HC2-s
Sensor number (optional)	Two digits	15-0292238823
Measurement height (m a.g.l.)		2
Sensor resolution		0.01
Sensor accuracy		±0.8%
Measurement range		0-100
Radiation housing	1/0 (true/false)	1
Active ventilation	1/0 (true/false)	0
Last calibration	YYYYMMDD	20160411
Calibration parameters	Param1=..., param2=..., ...	0.04
<b>Variable</b>		
Standard name (CF conventions)		relative humidity
Variable code (CF conventions)		RH
Unit (CF conventions, SI)		%
Lowest valid value		0
Highest valid value		100
Missing value		NaN
<b>Time</b>		
Start date and time	YYYYMMDD hh:mm[:ss] (UTC)	20161024 22:00 UTC
End date and time	YYYYMMDD hh:mm[:ss] (UTC)	current
Interval length		30
Interval unit	a, mon, d, h, m, s, ms	min
Aggregation method	mean, max, min, none, ...	mean
Samples (no. of samples per interval)		6

## **Site documentation- preissconif**

The station preissconif (52.6495 N, 13.2869 E, 52m) north of the city in the district Frohnau/Reinickendorf is located at the gardening center 'Preiss' surrounded to the south and east of the forest. The temperature/humidity sensor is located between small conifer trees with a height of 7m. The stations surface layer is of non-irrigated grass.



### **Station-05**

<b>Attribute</b>	<b>Format</b>	<b>Example</b>
Station name		preissconif
Number (optional)		05
Lon (WGS-84 ellipsoid and datum)	At least four decimal digits	52.6495
Lat (WGS-84 ellipsoid and datum)	At least four decimal digits	13.2869
Elevation (m a.m.s.l.)		52
Address (if available)		Gollanczstraße 144, 13465 Berlin
City		Berlin
Country		Germany
Sky view factor (optional)		0.110
Local Climate Zone (optional)		A
Documentation of station history (optional)		New station since 12.10.2016

### **Instrument- Temperature**

<b>Attribute</b>	<b>Format</b>	<b>Example</b>
Device model name		12653652
Manufacturer		Rotronic
Serial number		0020085939
Sensor class		Pt100
Sensor number (optional)	Two digits	15-0271126760
Measurement height (m a.g.l.)		2
Sensor resolution		0.1
Measurement range		213.15 – 333.15
Radiation housing	1/0 (true/false)	1
Active ventilation	1/0 (true/false)	0

Last calibration	YYYYMMDD	20160411
Calibration parameters	Param1=..., param2=., ...	0.0
Variable	<b>Format</b>	<b>Example</b>
Standard name (CF conventions)		air_temperature
Long name (optional)		Air temperature
Variable code (CF conventions)		T
Unit (CF conventions, SI)		°C
Lowest valid value		40
Highest valid value		-60
Missing value		NaN

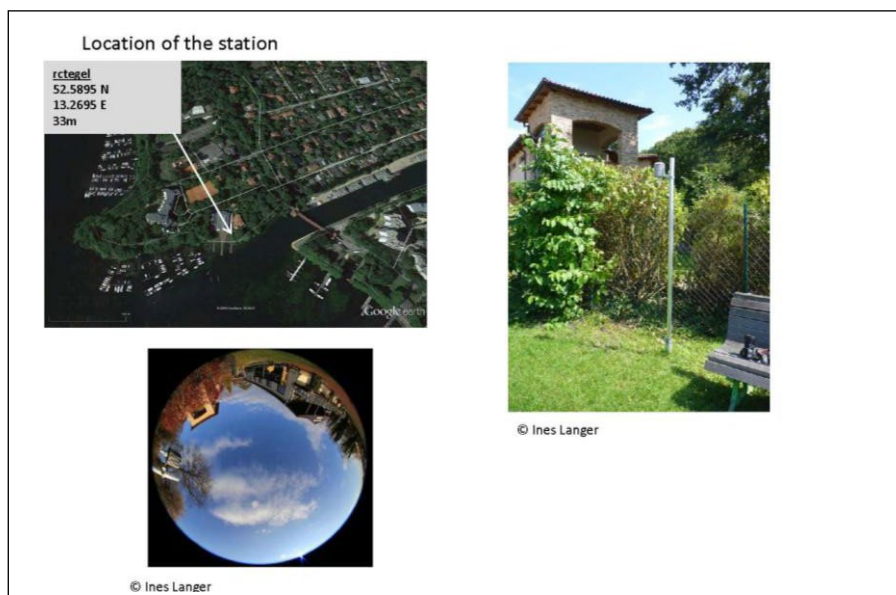
### Instrument- Relative humidity

Attribute	Format	Example
Device model name		12653652
Manufacturer		Rotronic
Serial number		0020085939
Sensor class		HC2-s
Sensor number (optional)	Two digits	15-0271126760
Measurement height (m a.g.l.)		2
Sensor resolution		0.01
Sensor accuracy		±0.8%
Measurement range		0-100
Radiation housing	1/0 (true/false)	1
Active ventilation	1/0 (true/false)	0
Last calibration	YYYYMMDD	20160411
Calibration parameters	Param1=..., param2=., ...	0.10
<b>Variable</b>		
Standard name (CF conventions)		relative humidity
Variable code (CF conventions)		RH
Unit (CF conventions, SI)		%
Lowest valid value		0
Highest valid value		100
Missing value		NaN
<b>Time</b>	<b>Format</b>	<b>Example</b>
Start date and time	YYYYMMDD hh:mm[:ss] (UTC)	20161012 11:40 UTC
End date and time	YYYYMMDD hh:mm[:ss] (UTC)	current
Regular	1/0 (true/false)	
Interval length		30
Interval unit	a, mon, d, h, m, s, ms	min
Aggregation method	mean, max, min, none, ...	mean
Samples (no. of samples per interval)		6



## Site documentation- rctegel

The station rctegel (52.5895 N, 13.2695 E, 33m) north in the district Tegel/Reinickendorf is located at the RC Tegel club next to the waterfront. The station has distance of 5m in north direction to the clubhouse and in south direction 10m to the 'Tegel lake'. The surface layer is non-irrigated grass.



### Station-06

Attribute	Format	Example
Station name		rctegel
Number (optional)		06
Lon (WGS-84 ellipsoid and datum)	At least four decimal digits	52.5895
Lat (WGS-84 ellipsoid and datum)	At least four decimal digits	13.2695
Elevation (m a.m.s.l.)		33
Address (if available)		Gabrielenstraße 83, 13507 Berlin
City		Berlin
Country		Germany
Sky view factor (optional)		0.500
Local Climate Zone (optional)		G
Documentation of station history (optional)		New station since 16.10.2016

### Instrument- Temperature

Attribute	Format	Example
Device model name		12653644
Manufacturer		Rotronic
Serial number		0020085943
Sensor class		Pt100
Sensor number (optional)	Two digits	15-0271164645
Measurement height (m a.g.l.)		2
Sensor resolution		0.01
Sensor accuracy		0.1
Measurement range		233.15 – 333.15
Radiation housing	1/0 (true/false)	1
Active ventilation	1/0 (true/false)	0
Last calibration	YYYYMMDD	20160411

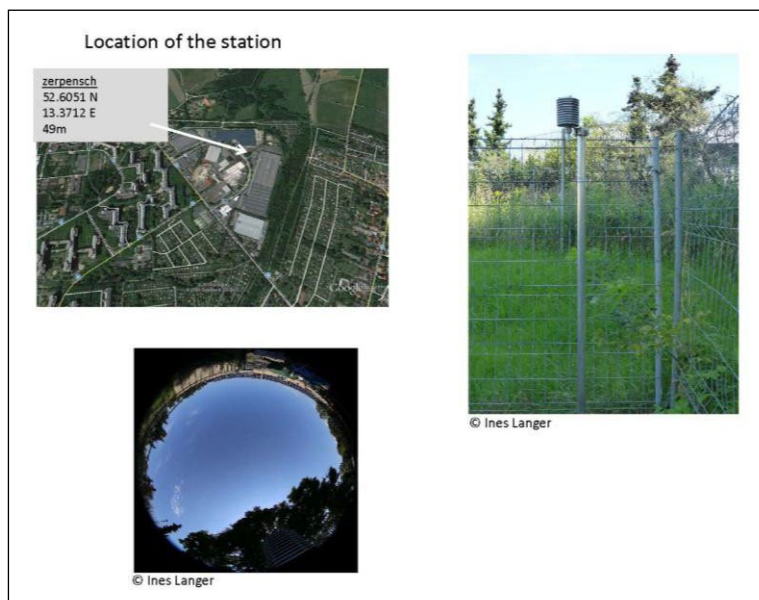
Calibration parameters	Param1=..., param2=., ...	0.0
<b>Variable</b>	<b>Format</b>	<b>Example</b>
Standard name (CF conventions)		air_temperature
Long name (optional)		Air temperature
Variable code (CF conventions)		T
Unit (CF conventions, SI)		°C
Lowest valid value		40
Highest valid value		-60
Missing value		NaN

***Instrument- Relative humidity***

<b>Attribute</b>	<b>Format</b>	<b>Example</b>
Device model name		12653644
Manufacturer		Rotronic
Serial number		0020085943
Sensor class		HC2-S3
Sensor number (optional)	Two digits	15-0271164645
Measurement height (m a.g.l.)		2
Sensor resolution		0.01
Sensor accuracy		±0.8%/296.15
Measurement range		0-100
Radiation housing	1/0 (true/false)	1
Active ventilation	1/0 (true/false)	0
Last calibration	YYYYMMDD	20160411
Calibration parameters	Param1=..., param2=., ...	0.13
<b>Variable</b>		
Standard name (CF conventions)		relative humidity
Variable code (CF conventions)		RH
Unit (CF conventions, SI)		%
Lowest valid value		0
Highest valid value		100
Missing value		NaN
<b>Time</b>		
Start date and time	YYYYMMDD hh:mm[:ss] (UTC)	20161016 13:30
End date and time	YYYYMMDD hh:mm[:ss] (UTC)	current
Regular	1/0 (true/false)	
Interval length		30
Interval unit	a, mon, d, h, m, s, ms	min
Aggregation method	mean, max, min, none, ...	mean
Samples (no. of samples per interval)		6

## Site documentation- zerpensch

The station zerpensch (52.6051 N, 13.3721 E, 49m) north of the city is located in the district Lübars/Reinickendorf, in an industrial area. Adjacent in northern direction is the 'Lübarser Feld', and 'Märkische Viertel'- a satellite city with buildings up to 50m. The stations environment is grass and small trees up to 2-4m, it's surface layer is asphalt.



### **Station-07**

Attribute	Format	Example
Station name		zerpensch
Number (optional)		07
Lon (WGS-84 ellipsoid and datum)	At least four decimal digits	52.6051
Lat (WGS-84 ellipsoid and datum)	At least four decimal digits	13.3721
Elevation (m a.m.s.l.)		49
Address (if available)		Zerpenschleuserring 30, 13439 Berlin
City		Berlin
Country		Germany
Sky view factor (optional)		0.435
Local Climate Zone (optional)		8
Documentation of station history (optional)		New station since 14.11.2016

### **Instrument- Temperature**

Attribute	Format	Example
Device model name		12653633
Manufacturer		Rotronic
Serial number		0020085832
Sensor class		Pt100
Measurement height (m a.g.l.)		2
Sensor resolution		0.1
Measurement range		213.15 – 333.15
Radiation housing	1/0 (true/false)	1

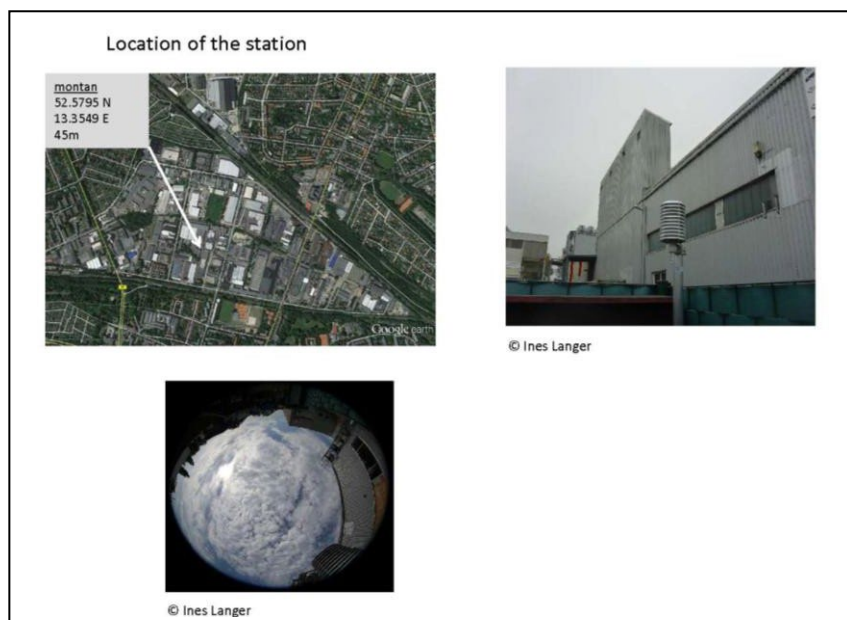
Active ventilation	1/0 (true/false)	0
Last calibration	YYYYMMDD	20160411
Calibration parameters	Param1=..., param2=., ...	0.01
<b>Variable</b>		
Standard name (CF conventions)		air_temperature
Long name (optional)		Air temperature
Variable code (CF conventions)		T
Unit (CF conventions, SI)		°C
Lowest valid value		40
Highest valid value		-60
Missing value		NaN

#### ***Instrument- Relative humidity***

<b>Attribute</b>	<b>Format</b>	<b>Example</b>
Device model name		12653633
Manufacturer		Rotronic
Serial number		0020085832
Sensor class		HC2-s
Measurement height (m a.g.l.)		2
Sensor resolution		0.01
Sensor accuracy		±0.8%/296.15
Measurement range		0-100
Radiation housing	1/0 (true/false)	1
Active ventilation	1/0 (true/false)	0
Last calibration	YYYYMMDD	20160411
Calibration parameters	Param1=..., param2=., ...	0.05
<b>Variable</b>		
Standard name (CF conventions)		relative humidity
Variable code (CF conventions)		RH
Unit (CF conventions, SI)		%
Lowest valid value		0
Highest valid value		100
Missing value		NaN
<b>Time</b>		
Start date and time	YYYYMMDD hh:mm[:ss] (UTC)	20161114 9:30 UTC
End date and time	YYYYMMDD hh:mm[:ss] (UTC)	current
Interval length		30
Interval unit	a, mon, d, h, m, s, ms	min
Aggregation method	mean, max, min, none, ...	mean
Samples (no. of samples per interval)		6

## Site documentation- montan

The station montan (52.5795 N, 13.3549 E, 45m) north of the city, in the district Reinickendorf is located in an industrial area (1.2km<sup>2</sup>). The surrounding buildings are close to each other from up to 5m until 10m. The closest building to the temperature/humidity sensor in east direction has a height of 9m and its surface layer is asphalt.



### **Station-08**

Attribute	Format	Example
Station name		montan
Number (optional)		08
Lon (WGS-84 ellipsoid and datum)	At least four decimal digits	52.5795
Lat (WGS-84 ellipsoid and datum)	At least four decimal digits	13.3549
Elevation (m a.m.s.l.)		45 m
Address (if available)		Montanstr. 8-16, 13407 Berlin
City		Berlin
Country		Germany
Sky view factor (optional)		0.558
Local Climate Zone (optional)		8
Documentation of station history (optional)		New station since 27.10.2016

### **Instrument- Temperature**

Attribute	Format	Example
Device model name		12653649
Manufacturer		Rotronic
Serial number		0020085956
Sensor class		Pt100
Measurement height (m a.g.l.)		2
Sensor resolution		0.01
Sensor accuracy		0.1
Measurement range		233.15 – 333.15
Radiation housing	1/0 (true/false)	1
Active ventilation	1/0 (true/false)	0
Last calibration	YYYYMMDD	20160411

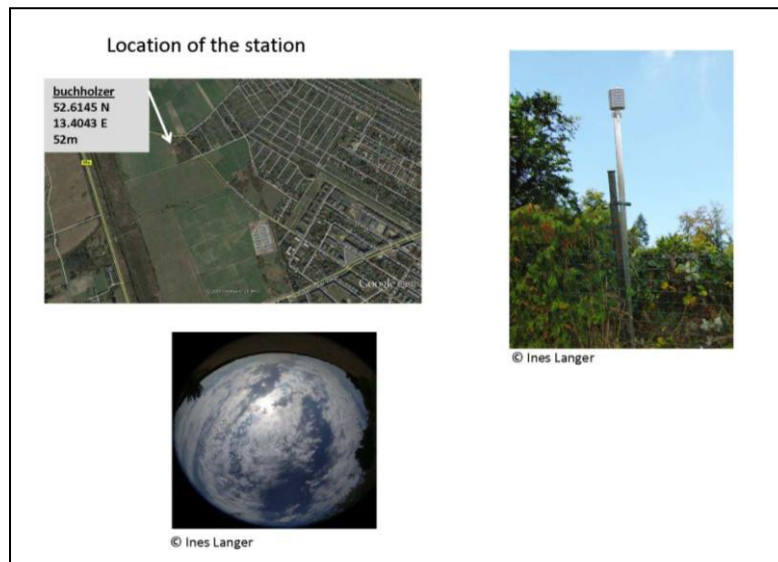
Calibration parameters	Param1=..., param2=., ...	0.0
<b>Variable</b>	<b>Format</b>	<b>Example</b>
Standard name (CF conventions)		air_temperature
Long name (optional)		Air temperature
Variable code (CF conventions)		T
Unit (CF conventions, SI)		°C
Lowest valid value		40
Highest valid value		-60
Missing value		NaN

***Instrument- Relative humidity***

<b>Attribute</b>	<b>Format</b>	<b>Example</b>
Device model name		12653649
Manufacturer		Rotronic
Serial number		0020085956
Sensor class		HC2-S3
Measurement height (m a.g.l.)		2
Sensor resolution		0.01
Sensor accuracy		±0.8%/296.15
Measurement range		0-100
Radiation housing	1/0 (true/false)	1
Active ventilation	1/0 (true/false)	0
Last calibration	YYYYMMDD	20160411
Calibration parameters	Param1=..., param2=., ...	0.4
<b>Variable</b>		
Standard name (CF conventions)		relative humidity
Variable code (CF conventions)		RH
Unit (CF conventions, SI)		%
Lowest valid value		0
Highest valid value		100
Missing value		NaN
<b>Time</b>		
Start date and time	YYYYMMDD hh:mm[:ss] (UTC)	20161027 11:15 UTC
End date and time	YYYYMMDD hh:mm[:ss] (UTC)	current
Regular	1/0 (true/false)	
Interval length		30
Interval unit	a, mon, d, h, m, s, ms	min
Aggregation method	mean, max, min, none, ...	mean
Samples (no. of samples per interval)		6

## Site documentation- buchholzer

The station buchholzer, (52.6145 N, 13.4043 E, 52m) north east of the city is located in the district Pankow, subdistrict Blankenfelde. The surrounding area is the called 'Elisabeth Aue', where in the north the Kalktuffgelände of the Tegler Fließ area is located. This station is one of three stations, which are located at the Elisabeth-Aue. The station is located at the end of a garden, with a distance of 2m to a small pond. The surface layer is a hedge of 1.5m.



### **Station-09**

Attribute	Format	Example
Station name		buchholzer
Number (optional)		09
Lon (WGS-84 ellipsoid and datum)	At least four decimal digits	52.6145
Lat (WGS-84 ellipsoid and datum)	At least four decimal digits	13.4043
Elevation (m a.m.s.l.)		52 m
Address (if available)		Buchholzer Straße 50 13159 Berlin
City		Berlin
Country		Germany
Sky view factor (optional)		0.570
Local Climate Zone (optional)		D
Documentation of station history (optional)		New station since 04.11.2016

### **Instrument- Temperature**

Attribute	Format	Example
Device model name		12653653
Manufacturer		Rotronic
Serial number		0020085815
Sensor class		Pt100
Sensor number (optional)	Two digits	15-0271139409
Measurement height (m a.g.l.)		2
Sensor resolution		0.01
Sensor accuracy		0.1
Measurement range		233.15 – 333.15

Radiation housing	1/0 (true/false)	1
Active ventilation	1/0 (true/false)	0
Last calibration	YYYYMMDD	20160411
Calibration parameters	Param1=..., param2=., ...	0.02
<b>Variable</b>		
Standard name (CF conventions)		air temperature
Long name (optional)		Air temperature
Variable code (CF conventions)		T
Unit (CF conventions, SI)		°C
Lowest valid value		40
Highest valid value		-60
Missing value		NaN

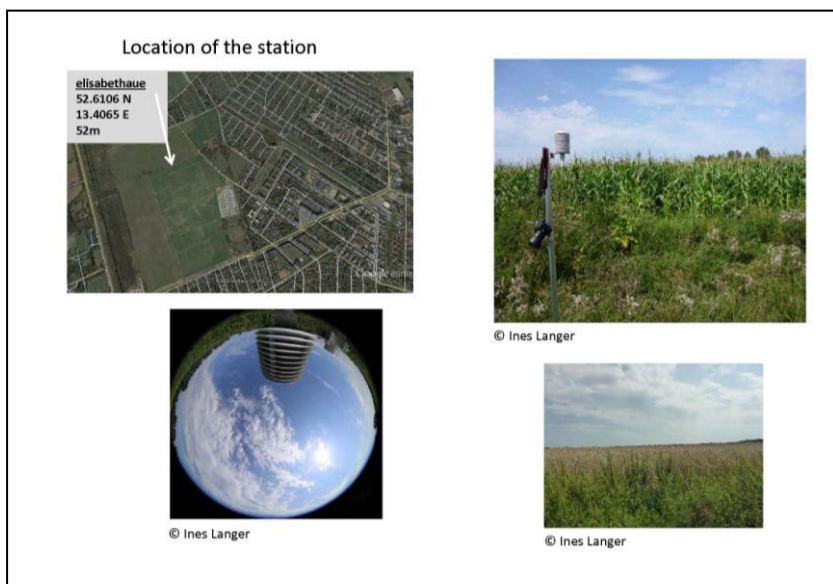
### ***Instrument- Relative humidity***

<b>Attribute</b>	<b>Format</b>	<b>Example</b>
Device model name		12653653
Manufacturer		Rotronic
Serial number		0020085815
Sensor class		HC2-S3
Sensor number (optional)	Two digits	15-0271139409
Measurement height (m a.g.l.)		2
Sensor resolution		0.01
Sensor accuracy		±0.8%/296.15
Measurement range		0-100
Radiation housing	1/0 (true/false)	1
Active ventilation	1/0 (true/false)	0
Last calibration	YYYYMMDD	20160411
Calibration parameters	Param1=..., param2=., ...	0.09
<b>Variable</b>		
Standard name (CF conventions)		relative humidity
Variable code (CF conventions)		RH
Unit (CF conventions, SI)		%
Lowest valid value		0
Highest valid value		100
Missing value		NaN
<b>Time</b>		
Start date and time	YYYYMMDD hh:mm[:ss] (UTC)	20161104 11:40 UTC
End date and time	YYYYMMDD hh:mm[:ss] (UTC)	current
Interval length		30
Interval unit	a, mon, d, h, m, s, ms	min
Aggregation method	mean, max, min, none, ...	mean
Samples (no. of samples per interval)		6



## Site documentation- elisabethaue

The station elisabethaue (52.6106 N, 13.4065 E, 52m) north east of the city is located in the district Pankow, subdistrict Blankenfelde directly in the field of the 'Elisabeth-Aue', where the field is harvested t summer time. This station is one of three stations, which are located at the Elisabeth-Aue area.



### **Station-10**

Attribute	Format	Example
Station name		elisabethaue
Number (optional)		10
Lon (WGS-84 ellipsoid and datum)	At least four decimal digits	52.6106
Lat (WGS-84 ellipsoid and datum)	At least four decimal digits	13.4065
Elevation (m a.m.s.l.)		52
Address (if available)		Buchholzer Str. , 13159 Berlin
City		Berlin
Country		Germany
Sky view factor (optional)		0.611
Local Climate Zone (optional)		D
Documentation of station history (optional)		New Station since 04.11.2016, 10:00 UTC

### **Instrument- Temperature**

Attribute	Format	Example
Device model name		12653615
Manufacturer		Rotronic
Serial number		0020085833
Sensor class		Pt100
Sensor number (optional)	Two digits	15-0271153731
Measurement height (m a.g.l.)		2
Sensor resolution		0.01
Sensor accuracy		0.1
Measurement range		-233.15 - 333.15
Radiation housing	1/0 (true/false)	1

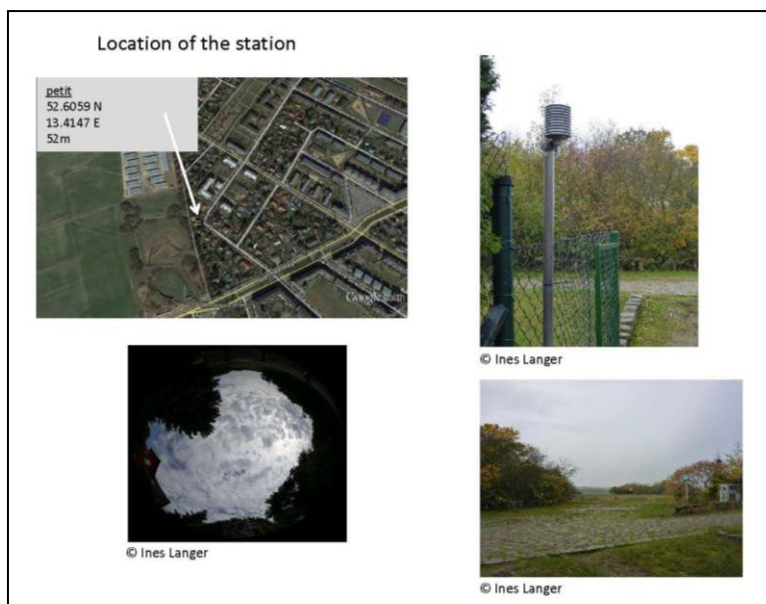
Active ventilation	1/0 (true/false)	0
Last calibration	YYYYMMDD	20160411
Calibration parameters	Param1=..., param2=., ...	0.01
<b>Variable</b>	<b>Format</b>	<b>Example</b>
Standard name (CF conventions)		air temperature
Long name (optional)		Air temperature
Variable code (CF conventions)		T
Unit (CF conventions, SI)		°C
Lowest valid value		40
Highest valid value		-60
Missing value		NaN

***Instrument- Relative humidity***

<b>Attribute</b>	<b>Format</b>	<b>Example</b>
Device model name		12653615
Manufacturer		Rotronic
Serial number		0020085833
Sensor class		HC2-S3
Sensor number (optional)	Two digits	15-0271153731
Measurement height (m a.g.l.)		2
Sensor resolution		0.01
Sensor accuracy		±0.8%/296.15
Measurement range		0-100
Radiation housing	1/0 (true/false)	1
Active ventilation	1/0 (true/false)	0
Last calibration	YYYYMMDD	20160411
Calibration parameters	Param1=..., param2=., ...	0.14
<b>Variable</b>		
Standard name (CF conventions)		relative humidity
Variable code (CF conventions)		RH
Unit (CF conventions, SI)		%
Lowest valid value		0
Highest valid value		100
Missing value		NaN
<b>Time</b>		
Start date and time	YYYYMMDD hh:mm[:ss] (UTC)	20161104 10:00 UTC
End date and time	YYYYMMDD hh:mm[:ss] (UTC)	current
Interval length		30
Interval unit	a, mon, d, h, m, s, ms	min
Aggregation method	mean, max, min, none, ...	mean
Samples (no. of samples per interval)		6

## Site documentation- petit

The station petit (52.6059 N, 13.4147 E, 52m) north east of the city, is located in the district Pankow, subdistrict Blankenfelde in an area with one family houses. The surface layer of the station is well cut grass. It's one of the station at the Elisabeth-aue area.



### **Station-11**

Attribute	Format	Example
Station name		petit
Number (optional)		11
Lon (WGS-84 ellipsoid and datum)	At least four decimal digits	52.6059
Lat (WGS-84 ellipsoid and datum)	At least four decimal digits	13.4147
Elevation (m a.m.s.l.)		52
Address (if available)		Petitweg 9a 13159 Berlin
City		Berlin
Country		Germany
Sky view factor (optional)		0.348
Local Climate Zone (optional)		6
Documentation of station history (optional)		New station since 04.11.2016

### **Instrument- Temperature**

Attribute	Format	Example
Device model name		12653617
Manufacturer		Rotronic
Serial number		0020085941
Sensor class		Pt100
Sensor number (optional)	Two digits	15-0271152606
Measurement height (m a.g.l.)		2
Sensor resolution		0.01
Sensor accuracy		0.1
Measurement range		233.15 – 333.15
Radiation housing	1/0 (true/false)	1
Active ventilation	1/0 (true/false)	0

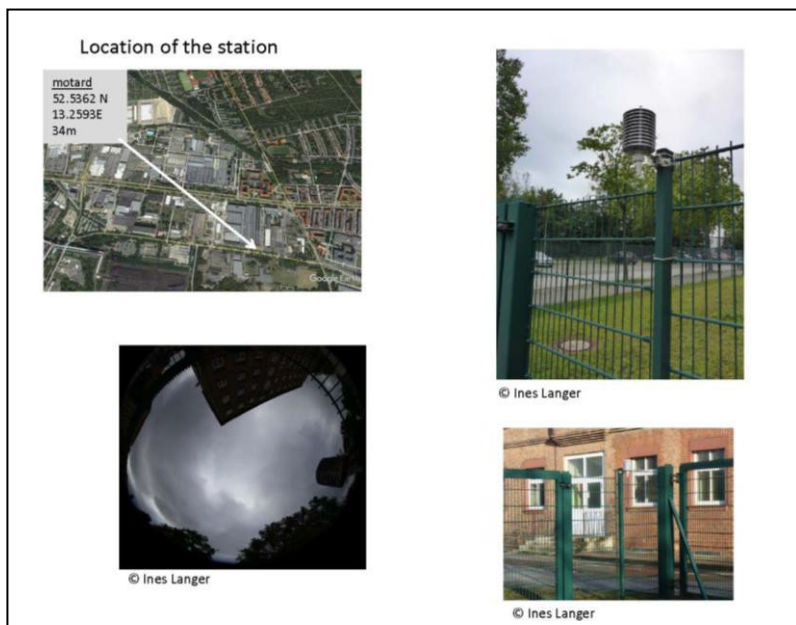
Last calibration	YYYYMMDD	20160411
Calibration parameters	Param1=..., param2=., ...	0.02
<b>Variable</b>	<b>Format</b>	<b>Example</b>
Standard name (CF conventions)		air temperature
Long name (optional)		Air temperature
Variable code (CF conventions)		T
Unit (CF conventions, SI)		°C
Lowest valid value		40
Highest valid value		-60
Missing value		NaN

***Instrument- Relative humidity***

<b>Attribute</b>	<b>Format</b>	<b>Example</b>
Device model name		12653617
Manufacturer		Rotronic
Serial number		0020085941
Sensor class		HC2-S3
Sensor number (optional)	Two digits	15-0271152606
Measurement height (m a.g.l.)		2
Sensor resolution		0.01
Sensor accuracy		±0.8%/296.15
Measurement range		0-100
Radiation housing	1/0 (true/false)	1
Active ventilation	1/0 (true/false)	0
Last calibration	YYYYMMDD	20160411
Calibration parameters	Param1=..., param2=., ...	0.10
<b>Variable</b>		
Standard name (CF conventions)		relative humidity
Variable code (CF conventions)		RH
Unit (CF conventions, SI)		%
Lowest valid value		0
Highest valid value		100
Missing value		NaN
<b>Time</b>		
Start date and time	YYYYMMDD hh:mm[:ss] (UTC)	20161104 10:00 UTC
End date and time	YYYYMMDD hh:mm[:ss] (UTC)	current
Interval length		30
Interval unit	a, mon, d, h, m, s, ms	min
Aggregation method	mean, max, min, none, ...	mean
Samples (no. of samples per interval)		6

## Site documentation- motard

The station motard is located in the north of the city in the sub district Siemensstadt (52.5362 N, 13.2593 E, 34m) of the district Spandau. The station itself is located at the industrial area Siemens. The surface layer of the station is grass and the distance to the next building (height 20m) in north direction is 2m.



### **Station-12**

Attribute	Format	Example
Station name		motard
Number (optional)		12
Lon (WGS-84 ellipsoid and datum)	At least four decimal digits	52.5362
Lat (WGS-84 ellipsoid and datum)	At least four decimal digits	13.2593
Elevation (m a.m.s.l.)		34 m
Address (if available)		Motardstr. 54, <b>13629 Berlin</b>
City		Berlin
Country		Germany
Sky view factor (optional)		0.379
Local Climate Zone (optional)		8
Documentation of station history (optional)		New station since 30.11.2016

### **Instrument- Temperature**

Attribute	Format	Example
Device model name		12653636
Manufacturer		Rotronic
Serial number		0020085957
Sensor class		Pt100
Sensor number (optional)	Two digits	15-0271210959
Measurement height (m a.g.l.)		2
Sensor resolution		0.01
Sensor accuracy		0.1
Measurement range		233.15 - 333.15
Radiation housing	1/0 (true/false)	1
Active ventilation	1/0 (true/false)	0

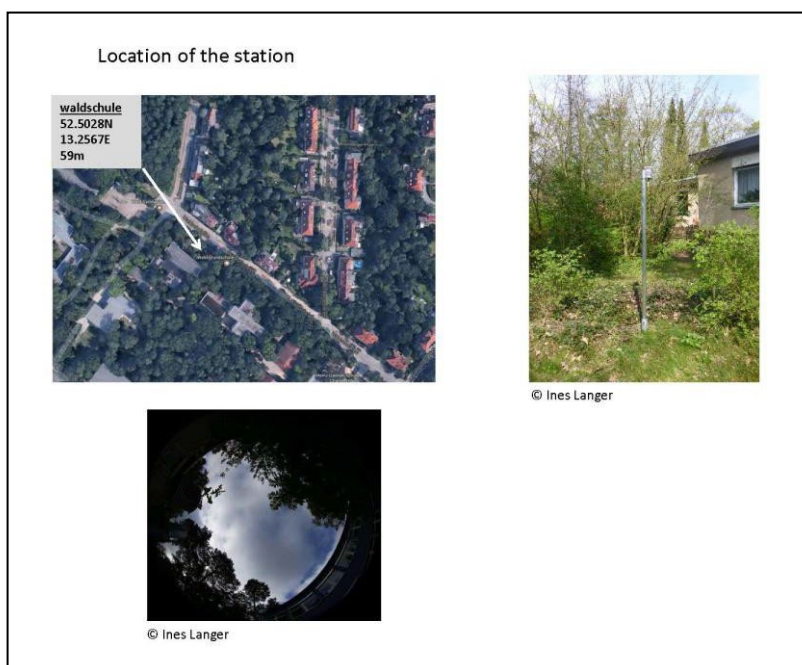
Last calibration	YYYYMMDD	20161104
Calibration parameters	Param1=..., param2=., ...	0.03
<b>Variable</b>	<b>Format</b>	<b>Example</b>
Standard name (CF conventions)		air_temperature
Long name (optional)		Air temperature
Variable code (CF conventions)		T
Unit (CF conventions, SI)		°C
Lowest valid value		40
Highest valid value		-60
Missing value		NaN

***Instrument- Relative humidity***

<b>Attribute</b>	<b>Format</b>	<b>Example</b>
Device model name		12653636
Manufacturer		Rotronic
Serial number		0020085957
Sensor class		HC2-S3
Sensor number (optional)	Two digits	15-0271210959
Measurement height (m a.g.l.)		2
Sensor resolution		0.01
Sensor accuracy		±0.8%/29.15
Measurement range		0-100
Radiation housing	1/0 (true/false)	1
Active ventilation	1/0 (true/false)	0
Last calibration	YYYYMMDD	20161117
Calibration parameters	Param1=..., param2=., ...	0.02
<b>Variable</b>		
Standard name (CF conventions)		relative humidity
Variable code (CF conventions)		RH
Unit (CF conventions, SI)		%
Lowest valid value		0
Highest valid value		100
Missing value		NaN
<b>Time</b>		
Start date and time	YYYYMMDD hh:mm[:ss] (UTC)	20161130 11:30 UTC
End date and time	YYYYMMDD hh:mm[:ss] (UTC)	Current
Interval length		30
Interval unit	a, mon, d, h, m, s, ms	min
Aggregation method	mean, max, min, none, ...	mean
Samples (no. of samples per interval)		6

## Site documentation- waldschule

The station waldschule is located in the district Charlottenburg to the area of the 'Waldschool' next to Congress center 'ICC' of the city. The station itself is located between two school buildings with a height of 3-6m; the surface layer is grass.



### **Station- 13**

Attribute	Format	Example
Station name		waldschule
Number (optional)		13
Lon (WGS-84 ellipsoid and datum)	At least four decimal digits	52.5028
Lat (WGS-84 ellipsoid and datum)	At least four decimal digits	13.2567
Elevation (m a.m.s.l.)		59 m
Address (if available)		Waldschulallee 83 14055 Berlin
City		Berlin
Country		Germany
Sky view factor (optional)		0.259
Local Climate Zone (optional)		6
Documentation of station history (optional)		New station since 03.04.2017

### **Instrument- Temperature**

Attribute	Format	Example
Device model name		12653610
Manufacturer		Rotronic
Serial number		0020086713
Sensor class		Pt100
Sensor number (optional)	Two digits	15-0287393349
Measurement height (m a.g.l.)		2
Sensor resolution		0.01

Sensor accuracy		0.1
Measurement range		233.15 - 333.15
Radiation housing	1/0 (true/false)	1
Active ventilation	1/0 (true/false)	0
Last calibration	YYYYMMDD	20160617
Calibration parameters	Param1=..., param2=..., ...	0.03
<b>Variable</b>	<b>Format</b>	<b>Example</b>
Standard name (CF conventions)		air_temperature
Long name (optional)		Air temperature
Variable code (CF conventions)		T
Unit (CF conventions, SI)		°C
Lowest valid value		40
Highest valid value		-60
Missing value		NaN

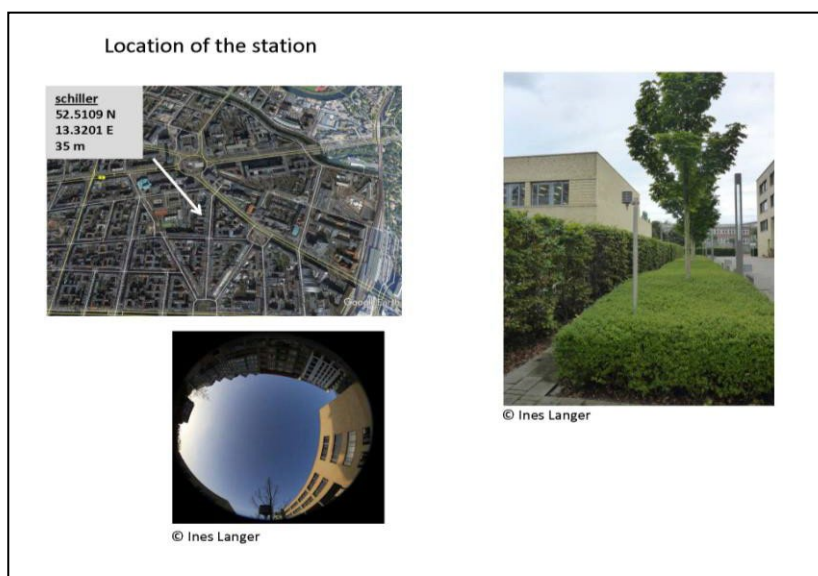
### ***Instrument- Relative humidity***

<b>Attribute</b>	<b>Format</b>	<b>Example</b>
Device model name		12653610
Manufacturer		Rotronic
Serial number		0020086713
Sensor class		HC2-S3
Sensor number (optional)	Two digits	15-0287393349
Measurement height (m a.g.l.)		2
Sensor resolution		0.01
Sensor accuracy		±0.8%/296.15
Measurement range		0-100
Radiation housing	1/0 (true/false)	1
Active ventilation	1/0 (true/false)	0
Last calibration	YYYYMMDD	20160617
Calibration parameters	Param1=..., param2=..., ...	0.07
<b>Variable</b>		
Standard name (CF conventions)		relative humidity
Variable code (CF conventions)		RH
Unit (CF conventions, SI)		%
Lowest valid value		0
Highest valid value		100
Missing value		NaN
<b>Time</b>		
Start date and time	YYYYMMDD hh:mm[:ss] (UTC)	20170403 11:55 UTC
End date and time	YYYYMMDD hh:mm[:ss] (UTC)	Current
Interval length	5	30
Interval unit	a, mon, d, h, m, s, ms	min
Aggregation method	mean, max, min, none, ...	mean
Samples (no. of samples per interval)		6



## Site documentation- schiller

The station schiller (52.5109 N, 13.3202 E, 35m) is located in the city center west at the 'OSZ Körperpflege' school (building height 9m) with a distance of 200m to the Hardenbergstr in the district Charlottenburg. The station is installed in an evergreen hedge (of 50 cm).



### **Station-14**

Attribute	Format	Example
Station name		schillerosz
Number (optional)		14
Lon (WGS-84 ellipsoid and datum)	At least four decimal digits	52.5109
Lat (WGS-84 ellipsoid and datum)	At least four decimal digits	13.3202
Elevation (m a.m.s.l.)		35 m
Address (if available)		Schillerstr. 120, 10625 Berlin
City		Berlin
Country		Germany
Sky view factor (optional)		0.513
Local Climate Zone (optional)		2
Documentation of station history (optional)		New station since 06.01.2017

### **Instrument- Temperature**

Attribute	Format	Example
Device model name		12653640
Manufacturer		Rotronic
Serial number		0020086678
Sensor class		Pt100
Sensor number (optional)	Two digits	15-0294025003
Measurement height (m a.g.l.)		2
Sensor resolution		0.01
Sensor accuracy		0.1
Measurement range		233.15 – 333.15
Radiation housing	1/0 (true/false)	1

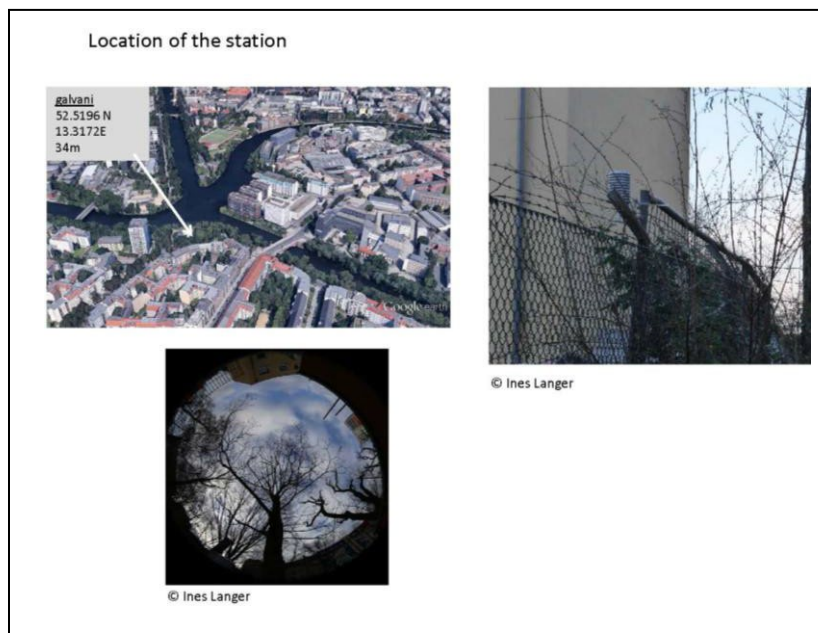
Active ventilation	1/0 (true/false)	0
Last calibration	YYYYMMDD	20160617
Calibration parameters	Param1=..., param2=., ...	0.0
<b>Variable</b>	<b>Format</b>	<b>Example</b>
Standard name (CF conventions)		air_temperature
Long name (optional)		Air temperature
Variable code (CF conventions)		T
Unit (CF conventions, SI)		°C
Lowest valid value		40
Highest valid value		-60
Missing value		NaN

### ***Instrument- Relative humidity***

<b>Attribute</b>	<b>Format</b>	<b>Example</b>
Device model name		12653640
Manufacturer		Rotronic
Serial number		0020086678
Sensor class		HC2-S3
Sensor number (optional)	Two digits	15-0271210959
Measurement height (m a.g.l.)		2
Sensor resolution		0.01
Sensor accuracy		±0.8%/296.15
Measurement range		0-100
Radiation housing	1/0 (true/false)	1
Active ventilation	1/0 (true/false)	0
Last calibration	YYYYMMDD	20160617
Calibration parameters	Param1=..., param2=., ...	0.02
<b>Variable</b>		
Standard name (CF conventions)		relative humidity
Variable code (CF conventions)		RH
Unit (CF conventions, SI)		%
Lowest valid value		0
Highest valid value		100
Missing value		NaN
<b>Time</b>		
Start date and time	YYYYMMDD hh:mm[:ss] (UTC)	20170106 12:20 UTC
End date and time	YYYYMMDD hh:mm[:ss] (UTC)	Current
Interval length		30
Interval unit	a, mon, d, h, m, s, ms	min
Aggregation method	mean, max, min, none, ...	mean
Samples (no. of samples per interval)		6

## Site documentation- galvani

The station galvani (52.5196 N, 13.3172 E, 34m) is located in the district Charlottenburg, with a distance of 2m next to the Spree river. The surface layer is a mixture layer of sand and small stone. The closest building has a height of 5m; it is a typical area with buildings up from 20m to 50m with old trees up to 30-40m.



### **Station-15**

Attribute	Format	Example
Station name		galvani
Number (optional)		15
Lon (WGS-84 ellipsoid and datum)	At least four decimal digits	52.5196
Lat (WGS-84 ellipsoid and datum)	At least four decimal digits	13.3172
Elevation (m a.m.s.l.)		34 m
Address (if available)		Galvanistr. 1, 10587 Berlin
City		Berlin
Country		Germany
Sky view factor (optional)		0.064
Local Climate Zone (optional)		2
Documentation of station history (optional)		New station since 13.01.2017

### **Instrument- Temperature**

Attribute	Format	Example
Device model name		12653613
Manufacturer		Rotronic
Serial number		0020086602
Sensor class		Pt100
Sensor number (optional)	Two digits	15-0294066804
Measurement height (m a.g.l.)		2
Sensor resolution		0.01
Sensor accuracy		0.1
Measurement range		233.15 – 333.15

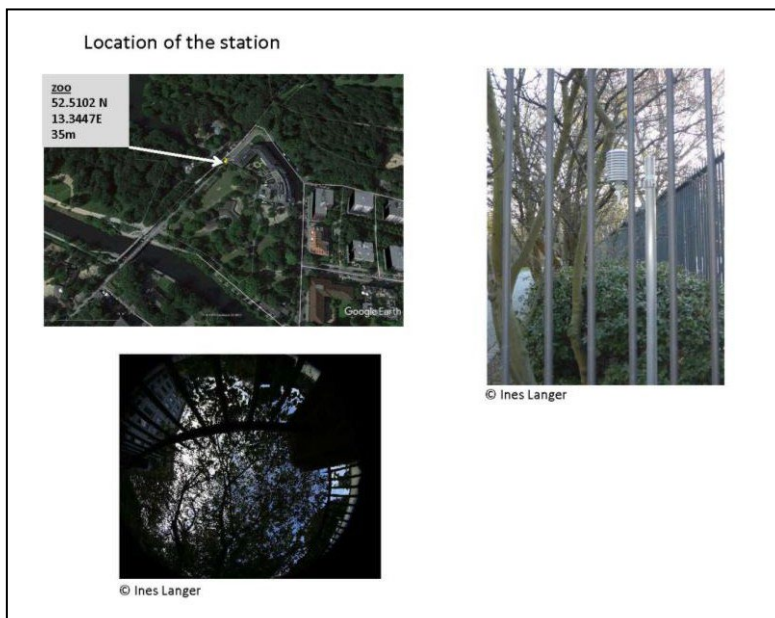
Radiation housing	1/0 (true/false)	1
Active ventilation	1/0 (true/false)	0
Last calibration	YYYYMMDD	20160617
Calibration parameters	Param1=..., param2=., ...	0.06
<b>Variable</b>	<b>Format</b>	<b>Example</b>
Standard name (CF conventions)		air_temperature
Long name (optional)		Air temperature
Variable code (CF conventions)		T
Unit (CF conventions, SI)		°C
Lowest valid value		40
Highest valid value		-60
Missing value		NaN

### ***Instrument- Relative humidity***

<b>Attribute</b>	<b>Format</b>	<b>Example</b>
Device model name		12653613
Manufacturer		Rotronic
Serial number		0020086602
Sensor class		HC2-S3
Sensor number (optional)	Two digits	15-0294066804
Measurement height (m a.g.l.)		2
Sensor resolution		0.01
Sensor accuracy		±0.8%/296.15
Measurement range		0-100
Radiation housing	1/0 (true/false)	1
Active ventilation	1/0 (true/false)	0
Last calibration	YYYYMMDD	20160617
Calibration parameters	Param1=..., param2=., ...	0.02
<b>Variable</b>		
Standard name (CF conventions)		relative humidity
Variable code (CF conventions)		RH
Unit (CF conventions, SI)		%
Lowest valid value		0
Highest valid value		100
Missing value		NaN
<b>Time</b>		
Start date and time	YYYYMMDD hh:mm[:ss] (UTC)	20170113 12:00 UTC
End date and time	YYYYMMDD hh:mm[:ss] (UTC)	Current
Regular	1/0 (true/false)	
Interval length		30
Interval unit	a, mon, d, h, m, s, ms	min
Aggregation method	mean, max, min, none, ...	mean
Samples (no. of samples per interval)		6

## Site documentation- zoo

The station zoo (52.51N, 13.34 E, 35m) is located in the inner city west at the zoological garden area northwest of the Spanish embassy and next to the Landwehr canal (distance of 150m) in the sub district Tiergarten/Charlottenburg. The station stands under a small tree and the surface layer is sandy soil.



### **Station-16**

Attribute	Format	Example
Station name		zoo
Number (optional)		16
Lon (WGS-84 ellipsoid and datum)	At least four decimal digits	52.5102
Lat (WGS-84 ellipsoid and datum)	At least four decimal digits	13.3447
Elevation (m a.m.s.l.)		35 m
Address (if available)		Tiergartenufer 10787 Berlin
City		Berlin
Country		Germany
Sky view factor (optional)		0.114
Local Climate Zone (optional)		B
Documentation of station history (optional)		New station since 13.01.2017

### **Instrument- Temperature**

Attribute	Format	Example
Device model name		12653629
Manufacturer		Rotronic
Serial number		0020086578
Sensor class		Pt100
Sensor number (optional)	Two digits	15-0292258330
Measurement height (m a.g.l.)		2
Sensor resolution		0.01
Sensor accuracy		0.1

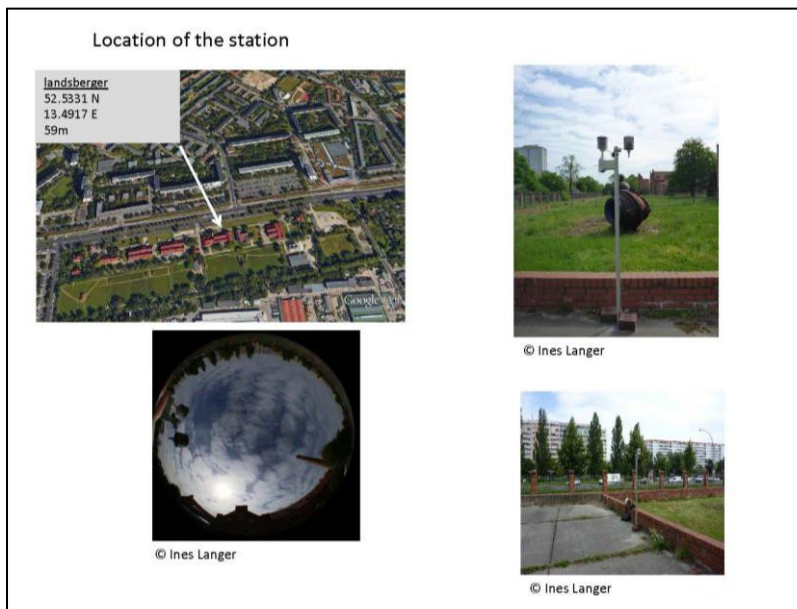
Measurement range		233.15 – 333.15
Radiation housing	1/0 (true/false)	1
Active ventilation	1/0 (true/false)	0
Last calibration	YYYYMMDD	20160617
Calibration parameters	Param1=..., param2=..., ...	0.0
<b>Variable</b>		
Standard name (CF conventions)		air_temperature
Long name (optional)		Air temperature
Variable code (CF conventions)		T
Unit (CF conventions, SI)		°C
Lowest valid value		40
Highest valid value		-60
Missing value		NaN

### ***Instrument- Relative humidity***

<b>Attribute</b>	<b>Format</b>	<b>Example</b>
Device model name		12653629
Manufacturer		Rotronic
Serial number		0020086578
Sensor class		HC2-S3
Sensor number (optional)	Two digits	15-0292258330
Measurement height (m a.g.l.)		2
Sensor resolution		0.01
Sensor accuracy		±0.8%/296.15
Measurement range		0-100
Radiation housing	1/0 (true/false)	1
Active ventilation	1/0 (true/false)	0
Last calibration	YYYYMMDD	20160617
Calibration parameters	Param1=..., param2=..., ...	0.4
<b>Variable</b>		
Standard name (CF conventions)		relative humidity
Variable code (CF conventions)		RH
Unit (CF conventions, SI)		%
Lowest valid value		0
Highest valid value		100
Missing value		NaN
<b>Time</b>		
Start date and time	YYYYMMDD hh:mm[:ss] (UTC)	20170113 13:00 UTC
End date and time	YYYYMMDD hh:mm[:ss] (UTC)	Current
Regular	1/0 (true/false)	
Interval length	5	30
Interval unit	a, mon, d, h, m, s, ms	min
Aggregation method	mean, max, min, none, ...	mean
Samples (no. of samples per interval)		6

## Site documentation- landsberger

The station landsberger (52.5331 N, 13.4917 E, 59m) northeast of the city in the sub district Friedrichshagen of the district Lichtenberg is located at the old water station with an extent of 0.6km. The temperature/humidity sensor measures south of the Landsberger Allee on asphalt. It has a distance of 21m to a red brick building with a height of 17m.



### Station-17

Attribute	Format	Example
Station name		landsberger
Number (optional)		17
Lon (WGS-84 ellipsoid and datum)	At least four decimal digits	52.5331
Lat (WGS-84 ellipsoid and datum)	At least four decimal digits	13.4917
Elevation (m a.m.s.l.)		59m
Address (if available)		Landsberger Allee 230, 10367 Berlin
City		Berlin
Country		Germany
Sky view factor (optional)		0.930
Local Climate Zone (optional)		8
Documentation of station history (optional)		New station since 17.11.2016

### Instrument- Temperature

Attribute	Format	Example
Device model name		12653638
Manufacturer		Rotronic
Serial number		0020085820
Sensor class		Pt100
Sensor number (optional)	Two digits	15-0271145001
Measurement height (m a.g.l.)		2
Sensor resolution		0.01
Sensor accuracy		0.1
Measurement range		233.15 – 333.15

Radiation housing	1/0 (true/false)	1
Active ventilation	1/0 (true/false)	0
Last calibration	YYYYMMDD	20160411
Calibration parameters	Param1=..., param2=., ...	0.01
<b>Variable</b>	<b>Format</b>	<b>Example</b>
Standard name (CF conventions)		air_temperature
Long name (optional)		Air temperature
Variable code (CF conventions)		T
Unit (CF conventions, SI)		°C
Lowest valid value		40
Highest valid value		-60
Missing value		NaN

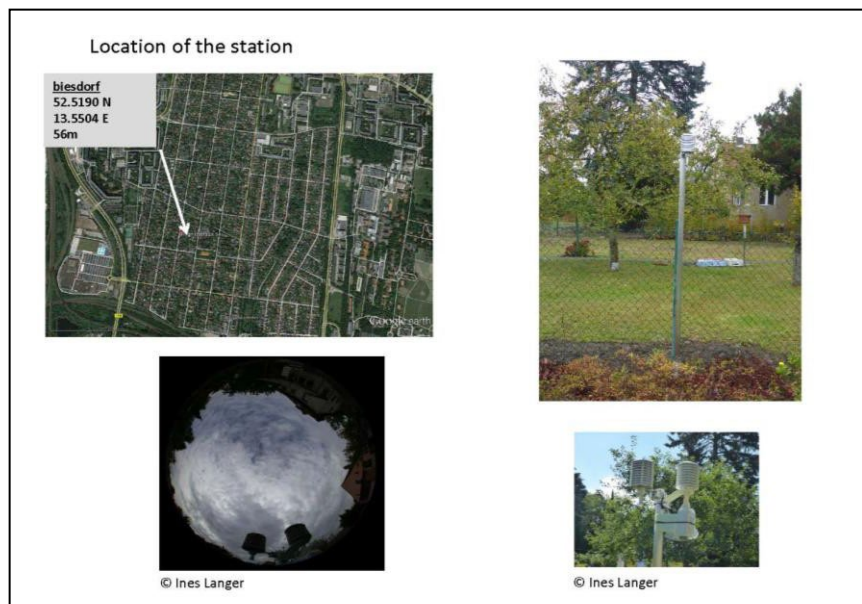
### ***Instrument- Relative humidity***

<b>Attribute</b>	<b>Format</b>	<b>Example</b>
Device model name		12653638
Manufacturer		Rotronic
Serial number		0020085820
Sensor class		HC2-S3
Sensor number (optional)	Two digits	15-0271145001
Measurement height (m a.g.l.)		2
Sensor resolution		0.01
Sensor accuracy		±0.8%/296.15
Measurement range		0-100
Radiation housing	1/0 (true/false)	1
Active ventilation	1/0 (true/false)	0
Last calibration	YYYYMMDD	20161117
Calibration parameters	Param1=..., param2=., ...	0.03
<b>Variable</b>		
Standard name (CF conventions)		relative humidity
Variable code (CF conventions)		RH
Unit (CF conventions, SI)		%
Lowest valid value		0
Highest valid value		100
Missing value		NaN
<b>Time</b>		
Start date and time	YYYYMMDD hh:mm[:ss] (UTC)	20161117 12:40 UTC
End date and time	YYYYMMDD hh:mm[:ss] (UTC)	Current
Regular	1/0 (true/false)	
Interval length		30
Interval unit	a, mon, d, h, m, s, ms	min
Aggregation method	mean, max, min, none, ...	mean
Samples (no. of samples per interval)		6



## Site documentation- biesdorf

The station biesdorf is located in the subdistrict Biesdorf (52.5190 N, 13.5504 E, 56m) of Marzahn-Hellersdorf north east of the city. The station is located in an irrigated garden of 1000m<sup>2</sup> with very small trees. The surface layer is dark soil.



### **Station-18**

Attribute	Format	Example
Station name		biesdorf
Number (optional)		18
Lon (WGS-84 ellipsoid and datum)	At least four decimal digits	52.5190
Lat (WGS-84 ellipsoid and datum)	At least four decimal digits	13.5504
Elevation (m a.m.s.l.)		56 m
Address (if available)		Prignitzstr. 54, 12683 Berlin
City		Berlin
Country		Germany
Sky view factor (optional)		0.701
Local Climate Zone (optional)		6
Documentation of station history (optional)		New station since 27.10.2016

### **Instrument- Temperature**

Attribute	Format	Example
Device model name		12653612
Manufacturer		Rotronic
Serial number		0020085814
Sensor class		Pt100
Sensor number (optional)	Two digits	15-0271128534
Measurement height (m a.g.l.)		2
Sensor resolution		0.01
Sensor accuracy		0.1
Measurement range		233.15 - 333.15

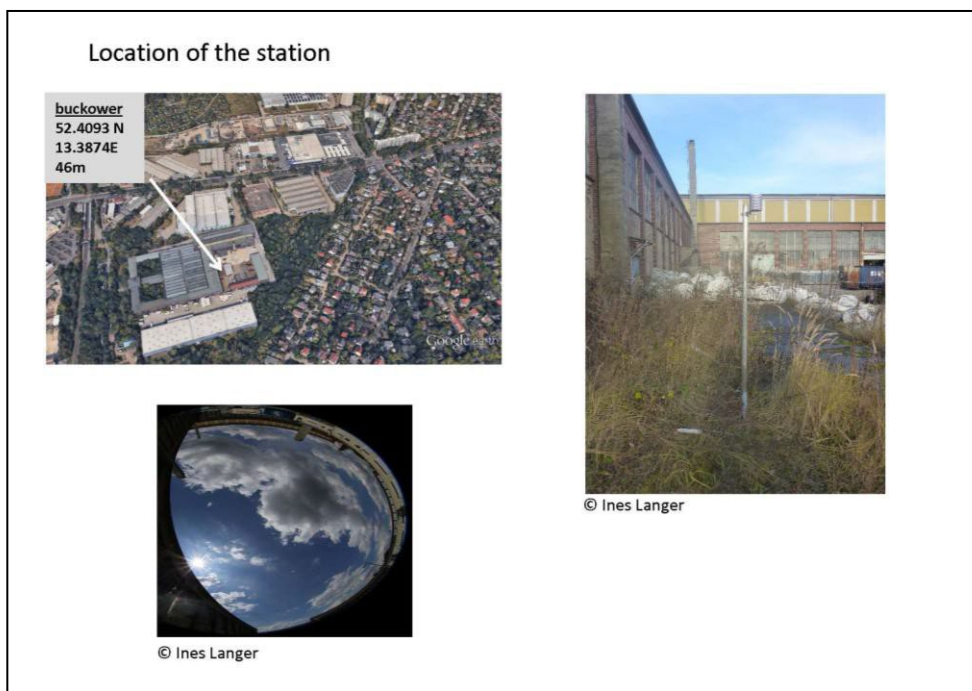
Radiation housing	1/0 (true/false)	1
Active ventilation	1/0 (true/false)	0
Last calibration	YYYYMMDD	20160411
Calibration parameters	Param1=..., param2=..., ...	0.01
<b>Variable</b>	<b>Format</b>	<b>Example</b>
Standard name (CF conventions)		air_temperature
Long name (optional)		Air temperature
Variable code (CF conventions)		T
Unit (CF conventions, SI)		°C
Lowest valid value		40
Highest valid value		-60
Missing value		NaN

### ***Instrument- Relative humidity***

<b>Attribute</b>	<b>Format</b>	<b>Example</b>
Device model name		12653612
Manufacturer		Rotronic
Serial number		0020085814
Sensor class		HC2-S3
Sensor number (optional)	Two digits	15-0271128534
Measurement height (m a.g.l.)		2
Sensor resolution		0.01
Sensor accuracy		±0.8%/ 296.15
Measurement range		0-100
Radiation housing	1/0 (true/false)	1
Active ventilation	1/0 (true/false)	0
Last calibration	YYYYMMDD	20160411
Calibration parameters	Param1=..., param2=..., ...	0.09
<b>Variable</b>		
Standard name (CF conventions)		relative humidity
Variable code (CF conventions)		RH
Unit (CF conventions, SI)		%
Lowest valid value		0
Highest valid value		100
Missing value		NaN
<b>Time</b>		
Start date and time	YYYYMMDD hh:mm[:ss] (UTC)	20161027 10:00
End date and time	YYYYMMDD hh:mm[:ss] (UTC)	current
Interval length		30
Interval unit	a, mon, d, h, m, s, ms	min
Aggregation method	mean, max, min, none, ...	mean
Samples (no. of samples per interval)		6

## Site documentation- buckower

The station buckower (52.4093 N, 13.3874 E, 46m) is located south of the city in the district Mariendorf at an industrial area of the company Plischka. The station stands on a courtyard surrounded by two buildings to the west side with buildings up to 10m height. The surface layer is grass with a mixture of concrete.



### Station-19

Attribute	Format	Example
Station name		buckower
Number (optional)		19
Lon (WGS-84 ellipsoid and datum)	At least four decimal digits	52.4093
Lat (WGS-84 ellipsoid and datum)	At least four decimal digits	13.3874
Elevation (m a.m.s.l.)		46
Address (if available)		Buchower Chaussee 116, 12277 Berlin
City		Berlin
Country		Germany
Sky view factor (optional)		0.446
Local Climate Zone (optional)		8
Documentation of station history (optional)		New station since 08.12.2016

### Instrument- Temperature

Attribute	Format	Example
Device model name		12653652
Manufacturer		Rotronic
Serial number		0020086650
Sensor class		Pt100
Sensor number (optional)	Two digits	15-0294045514

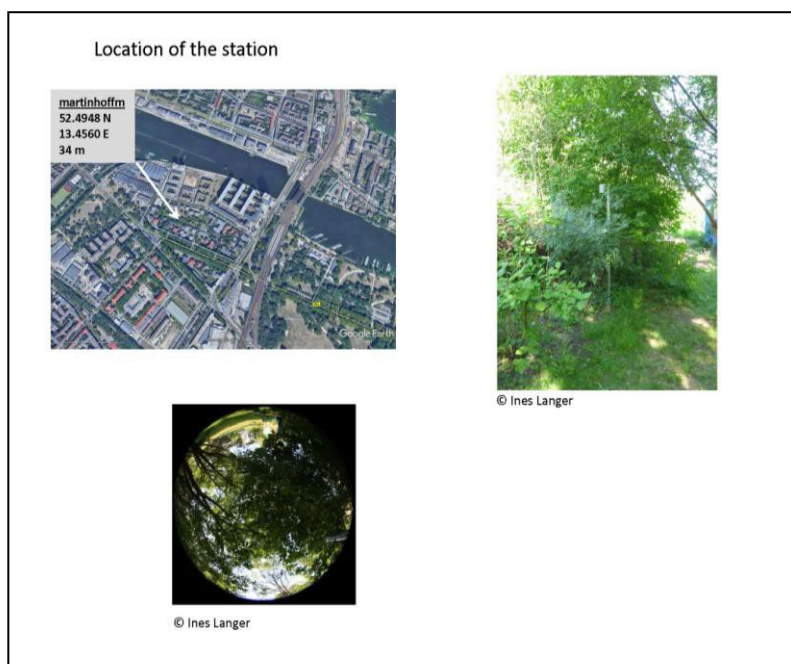
Measurement height (m a.g.l.)		2
Sensor resolution		0.01
Sensor accuracy		0.1
Measurement range		233.15 – 333.15
Radiation housing	1/0 (true/false)	1
Active ventilation	1/0 (true/false)	0
Last calibration	YYYYMMDD	20160617
Calibration parameters	Param1=..., param2=..., ...	0.01
<b>Variable</b>	<b>Format</b>	<b>Example</b>
Standard name (CF conventions)		air_temperature
Long name (optional)		Air temperature
Variable code (CF conventions)		T
Unit (CF conventions, SI)		°C
Lowest valid value		40
Highest valid value		-60
Missing value		NaN

### ***Instrument- Relative humidity***

<b>Attribute</b>	<b>Format</b>	<b>Example</b>
Device model name		12653636
Manufacturer		Rotronic
Serial number		0020085957
Sensor class		HC2-S3
Sensor number (optional)	Two digits	15-0271210959
Measurement height (m a.g.l.)		2
Sensor resolution		0.01
Sensor accuracy		±0.8%/296.15
Measurement range		0-100
Radiation housing	1/0 (true/false)	1
Active ventilation	1/0 (true/false)	0
Last calibration	YYYYMMDD	20160617
Calibration parameters	Param1=..., param2=..., ...	0.07
<b>Variable</b>		
Standard name (CF conventions)		relative humidity
Variable code (CF conventions)		RH
Unit (CF conventions, SI)		%
Lowest valid value		0
Highest valid value		100
Missing value		NaN
<b>Time</b>		
Start date and time	YYYYMMDD hh:mm[:ss] (UTC)	20161208 09:30
End date and time	YYYYMMDD hh:mm[:ss] (UTC)	Current
Interval length		30
Interval unit	a, mon, d, h, m, s, ms	min
Aggregation method	mean, max, min, none, ...	mean
Samples (no. of samples per interval)		6

### **Site documentation- martinhoffm**

The station martinhoffm (52.5362 N, 13.2593 E, 34 m) is located in the district Alt-Treptow southeast of the city with a distance of 150m to the Spree Rrver. It is an area surrounded by buildings with a height of 7m; the station is located in a garden area under a small tree.



### **Station-20**

<b>Attribute</b>	<b>Format</b>	<b>Example</b>
Station name		martinhoffm
Number (optional)		20
Lon (WGS-84 ellipsoid and datum)	At least four decimal digits	52.4951
Lat (WGS-84 ellipsoid and datum)	At least four decimal digits	13.4554
Elevation (m a.m.s.l.)		35
Address (if available)		Martin-Hoffmannstr.25-27 12435 Berlin
Manager		Head of Urban Climate and Health, Freie Universität Berlin
City		Berlin
Country		Germany
Sky view factor (optional)		0.019
Local Climate Zone (optional)		6
Documentation of station history (optional)		New station since 04.01.2017

### **Instrument- Temperature**

<b>Attribute</b>	<b>Format</b>	<b>Example</b>
Device model name		12653641
Manufacturer		Rotronic
Serial number		0020086601
Sensor class		Pt100
Sensor number (optional)	Two digits	15-0287322286
Measurement height (m a.g.l.)		2
Sensor resolution		0.01

Sensor accuracy		0.1
Measurement range		233.15 - 333.15
Radiation housing	1/0 (true/false)	1
Active ventilation	1/0 (true/false)	0
Last calibration	YYYYMMDD	20160617
Calibration parameters	Param1=..., param2=..., ...	-0.02
<b>Variable</b>	<b>Format</b>	<b>Example</b>
Standard name (CF conventions)		air_temperature
Long name (optional)		Air temperature
Variable code (CF conventions)		T
Unit (CF conventions, SI)		°C
Lowest valid value		40
Highest valid value		-60
Missing value		NaN

### Instrument- Relative humidity

<b>Attribute</b>	<b>Format</b>	<b>Example</b>
Device model name		12653641
Manufacturer		Rotronic
Serial number		0020086601
Sensor class		HC2-S3
Sensor number (optional)	Two digits	15-0287322286
Measurement height (m a.g.l.)		2
Sensor resolution		0.01
Sensor accuracy		±0.8%/296.15
Measurement range		0-100
Radiation housing	1/0 (true/false)	1
Active ventilation	1/0 (true/false)	0
Last calibration	YYYYMMDD	20160617
Calibration parameters	Param1=..., param2=..., ...	0.05
<b>Variable</b>		
Standard name (CF conventions)		relative humidity
Variable code (CF conventions)		RH
Unit (CF conventions, SI)		%
Lowest valid value		0
Highest valid value		100
Missing value		NaN
<b>Time</b>		
Start date and time	YYYYMMDD hh:mm[:ss] (UTC)	20170104 16:00
End date and time	YYYYMMDD hh:mm[:ss] (UTC)	Current
Regular	1/0 (true/false)	
Interval length		30
Interval unit	a, mon, d, h, m, s, ms	m
Aggregation method	mean, max, min, none, ...	mean
Samples (no. of samples per interval)		6