



Aberrant Hematopoiesis and Morbidity in Extremely Preterm Infants With Intrauterine Growth Restriction

Nora J. Reibel¹, Christof Dame^{1*}, Christoph Bührer¹ and Tobias Muehlbacher^{1,2}

¹ Department of Neonatology, Charité - Universitätsmedizin Berlin, Berlin, Germany, ² Department of Neonatology, University Hospital Zurich, Zurich, Switzerland

OPEN ACCESS

Edited by:

Giovanni Vento,
Catholic University of the Sacred
Heart, Italy

Reviewed by:

Drucilla Jane Roberts,
Massachusetts General Hospital and
Harvard Medical School,
United States
Luciana Teofili,
Catholic University of the Sacred
Heart, Italy

*Correspondence:

Christof Dame
christof.dame@charite.de

Specialty section:

This article was submitted to
Neonatology,
a section of the journal
Frontiers in Pediatrics

Received: 21 June 2021

Accepted: 06 October 2021

Published: 12 November 2021

Citation:

Reibel NJ, Dame C, Bührer C and
Muehlbacher T (2021) Aberrant
Hematopoiesis and Morbidity in
Extremely Preterm Infants With
Intrauterine Growth Restriction.
Front. Pediatr. 9:728607.
doi: 10.3389/fped.2021.728607

Background and Objective: Intrauterine growth restriction (IUGR) poses additional challenges in extremely low gestational age newborns (ELGANs). We assessed disturbed hematopoiesis and morbidities associated with this disorder.

Methods: This single-center retrospective case-control study compared perinatal hematological profiles, major morbidities, and mortality of 49 infants (gestational age <28 weeks, birth weight \leq 3rd percentile, and compromised placental function) and 98 infants (birth weight >10th percentile) matched for gestational age, year, and sex.

Results: IUGR-ELGANs had significantly elevated nucleated red blood cells and lower neutrophil and platelet counts at birth and on the third day of life. During the first week of life, IUGR-ELGANs received more red blood cell, platelet, and plasma transfusions and were more intensively treated with antibiotics. Rates of infections acquired during the first week (59.2 vs. 17.3%, $p < 0.001$), severe bronchopulmonary dysplasia or death (42.9 vs. 17.3%, $p < 0.01$), and mortality (36.7 vs. 7.1%, $p < 0.001$) were markedly elevated in IUGR-ELGANs, but not of hemorrhages or other morbidities.

Conclusions: IUGR-ELGANs have high rates of acquired infections during the first week of life and display severe pulmonary morbidity leading to bronchopulmonary dysplasia or death. The high rate of transfusions observed in these infants warrants further scrutiny.

Keywords: anemia, coagulation disorder, neutropenia, sepsis, thrombocytopenia

INTRODUCTION

Approximately 5% of all pregnancies are associated with intrauterine growth restriction (IUGR), a condition in which the fetus is unable to reach its own biologically determined growth potential (1, 2). Higher incidences are observed in preterm infants (3, 4). IUGR is associated with increased fetal and neonatal morbidity and mortality (5). The most common underlying cause is a dysfunction of the utero-placental unit leading to the inadequate supply of oxygen and nutrients to the developing fetus (2). Chronic oxygen deprivation in the fetus triggers the synthesis of erythropoietin (EPO) resulting in the stimulation of erythropoiesis and an increased number of erythroid precursor cells (6). Subsequently to excessive erythropoiesis, neonates born with IUGR often suffer from early-onset thrombocytopenia and leucopenia (7, 8).

The exact mechanisms of the complex hematopoietic disorder are still unclear. One hypothesis is that the excessively stimulated erythropoiesis causes subsequent suppression of platelet (PLT) and white blood cell (WBC) production as pluripotent precursor cells are being shifted in the direction of erythropoiesis (7–9). The hematological disorders might increase susceptibility to early-onset infections (EOI) (10) and bleeding disorders, such as intraventricular hemorrhage (IVH) and pulmonary hemorrhage (PH), particularly in very preterm infants. Concerning major bleedings, it is discussed that plasmatic coagulation disorders could be a bigger issue than thrombocytopenia (11–13).

Transfusions in the non-bleeding patient as well as prophylactic antibiotic treatment are commonly given in order to prevent these complications, despite missing evidence. In addition, two recently published randomized clinical trials (RCTs) showed an association between the administration of platelet transfusions and major hemorrhage as well as death (14, 15).

The primary aim was to investigate to which extent hematologic disorders in IUGR-ELGANs (extremely low gestational age newborns) are associated with a higher risk of major morbidity as infection, hemorrhage, bronchopulmonary dysplasia (BPD), necrotizing enterocolitis (NEC), or retinopathy of prematurity (ROP). The secondary aim was to analyze underlying causes for mortality in these high-risk infants.

METHODS

This retrospective case-control study applied a very strict definition of the study population not just as small-for gestational age (GA), but also with confirmed compromised placental function to gain robust results on the hematologic disorders and the associated sequelae. Therefore, we identified all very low birth weight (VLBW) infants with IUGR at our tertiary neonatal intensive care unit between January 2008 and December 2017 *via* the electronic digital patient management system. Eligible patients fulfilled the following inclusion criteria: GA <28 weeks, severe IUGR with birth weight \leq 3rd percentile, and proof of restricted placental perfusion. The latter was defined as at least one of the following Doppler-sonographic or histopathologic criteria: Pulsatility index of the uterine artery >95th percentile (16), cerebro-placental index <1 (defined as ratio pulsatility index middle cerebral artery to pulsatility index of the umbilical artery) indicating the brain-sparing effect in infants with chronic intrauterine compromise (17), or histopathology of the placenta

Abbreviations: ANC, absolute neutrophil count; aPTT, activated partial thromboplastin time; BPD, bronchopulmonary dysplasia; CBC, complete blood count; CrP, C-reactive protein; ELGAN, extremely low gestational age newborn; EOI, early-onset infection; EPO, erythropoietin; FFP, fresh frozen plasma; GA, gestational age; I-ENP, infections within the early neonatal period; IL-6, interleukin-6; INR, international normalized ratio; IUGR, intrauterine growth restriction; IVH, intraventricular hemorrhage; LOI, late-onset infection; NEC, necrotizing enterocolitis; NICU, neonatal intensive care unit; NRBC, nucleated red blood cells; PAH, pulmonary arterial hypertension; PH, pulmonary hemorrhage; PLT, platelets; PPHN, persistent pulmonary hypertension; RCT, randomized controlled trial; ROP, retinopathy of prematurity; SIP, spontaneous intestinal perforation; VLBW, very low birthweight; WBC, white blood count.

with proof of utero-placental dysfunction (18). Infants with major congenital malformations or chromosomal abnormalities or receiving primary palliative care were excluded. The control group was carefully selected from infants with birth weight >10th percentile to match the IUGR group as precisely as possible by (a) sex, (b) GA (\pm 6 days), and (c) birth within \pm 1 year to exclude changes in treatment protocols during the study period. To strengthen the power of our analysis in a small cohort, we allocated two controls for each IUGR-ELGAN.

Data extracted from medical records and laboratory files included clinical data of pre- and perinatal care, blood parameters, mortality, neonatal morbidities, and treatment. Routinely, blood specimens were taken directly after birth from peripheral venous puncture or through an umbilical catheter to determine the values of the complete blood cell count (CBC), laboratory inflammatory parameters [interleukin-6 (IL-6) and C-reactive protein (CrP)], and, during the study period, a coagulation screen [international normalized ratio (INR), activated partial thromboplastin time (aPTT), and fibrinogen] prior to the standard parenteral administration of 0.5 mg vitamin K. CBC was determined by using fully automated cell counters Sysmex XE-2100 and subsequently Sysmex XN10-1 (TOA Medical Electronics). CrP and IL-6 were measured with the Cobas® analyzer series (Roche) and coagulation screen with the automated coagulation analyzer Sysmex® CS-2500 and subsequently CS-5100 System (Siemens). Disorders in hematopoiesis were assessed by hemoglobin levels, nucleated red blood cells (NRBC), PLT counts, and WBC at birth. We defined a cutoff of \geq 8 NRBC/nl according to the GA-adjusted percentiles by Christensen et al. (19). Thrombocytopenia in very preterm infants was defined by a PLT count <150/nl and classified into severe (0–50/nl) and moderate (51–100/nl) (20). Neutropenia was defined as an absolute neutrophil count (ANC) <1,000/ μ l and classified into severe (0–500/ μ l) or moderate (501–999/ μ l) (21). Abnormal coagulation screens were defined depending on both GA and the respective laboratory method (22). Neonatal infection was defined as elevated inflammatory parameters with IL-6 plasma concentrations >100 ng/L and/or CrP plasma concentrations >10 mg/L (23, 24). Chorioamnionitis was defined as elevated inflammatory parameters in the initial blood sample at primary care and proven by histopathology (25). Depending on the age at onset of infection, EOI (elevated inflammatory parameters within the first 72 hours of life), infections within the early neonatal period (I-ENP) of the first 7 days of life, and late-onset infections (LOI) (elevated inflammatory parameters after the first week) were distinguished (26). In addition, the rate of positive blood cultures was analyzed, considering that the rate is often false negative in very preterm infants due to a low blood volume transferred to the culture bottle or because of intrapartum antibiotic prophylaxis (27, 28). Rationale to distinguish between the two different periods for EOI and I-ENP was to analyze the effect of a diminished granulopoiesis on the incidence of infections. Furthermore, we analyzed antibiotic treatment until discharge, considering the duration and substance. Standard treatment protocol for chorioamnionitis and EOI were ampicillin plus gentamicin during the whole study period, while the treatment

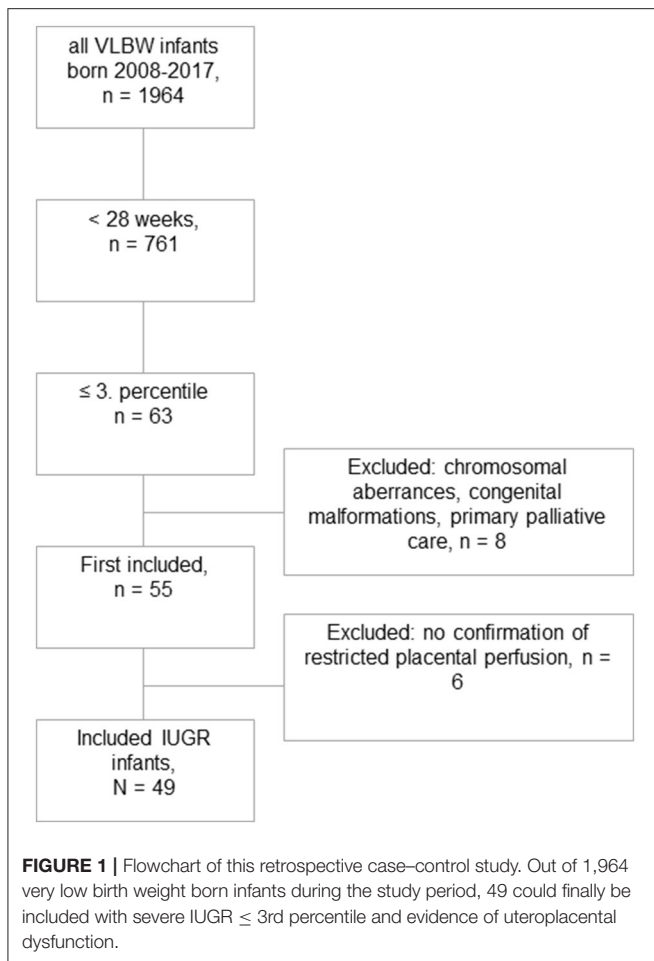


TABLE 1 | Demographic and clinical data of the ELGANs with severe IUGR (birth weight \leq 3rd percentile) and the age-matched control group.

	Severe IUGR (n = 49)	Controls (n = 98)	p-value
Birth weight (g)	430 (270–570)	820 (514–1245)	<0.001
Gestational age (weeks)	25.6 (23.4–27.6)	25.7 (22.9–27.7)	0.69
Female	22 (44.9)	44 (44.9)	1.0
Singletons	45 (91.8)	73 (74.5)	<0.05
Pulsatility index umbilical artery	1.92 (0.94–3.30)	1.09 (0.69–1.73)	<0.001
Cerebro-Placental-Ratio < 1	31/37 (83.8)	5/26 (19.0)	<0.001
histopathology: uteroplacental dysfunction	34/34 (100%)	2/69 (2.9%)	<0.001
Premature rupture of membranes	4 (8.2)	26/92 (26.5)	<0.01
Chorioamnionitis (histopathology and elevated inflammation parameter)	0/34	17/69 (24.6%)	<0.001
Antenatal steroids	39/47 (83.0)	90/97 (92.8)	0.09
Cesarean section	49/49 (100)	82/98 (83.7)	<0.01
Primary	26 (53.1)	13/94 (13.8)	<0.001
Umbilical cord artery pH	7.27 (7.01–7.37)	7.30 (6.88–7.46)	<0.01
Apgar score at 5 min	7 (1-9)	7 (1-9)	0.91
5-min Apgar score <5	7 (14.3)	8 (8.2)	0.26
Apgar score at 10 min	8 (5-9)	8 (1-9)	0.41
10-min Apgar score < 5	0 (0)	3 (3.1)	0.55
CRIB Score	8 (7-16)	5 (1-14)	<0.001

Categorical data are given as n (%), continuous data as median (range).

protocol of I-ENP and LOI changed from piperacillin plus cefotaxime to ampicillin/sulbactam plus gentamicin in 2011. Suspected or proven catheter-associated infections were treated with ampicillin/sulbactam plus vancomycin, and suspected or proven meningitis was additionally treated with cefotaxime. In case of life-threatening infections, treatment was escalated to second-line antibiotics as vancomycin plus meropenem. Discontinuation of antibiotic treatment depended on negative results of inflammatory parameters and clinical improvement. In case of culture-positive sepsis or meningitis, treatment was continued for at least 7 days.

The following interventions were recorded: Transfusions of red blood cells (RBC), PLT, and fresh frozen plasma (FFP) during the first week (volume and day of any transfusion), administration of exogenous surfactant, duration of mechanical ventilation, oxygen (O₂) supplementation, and inhaled nitric oxide.

Outcome variables were mortality prior to discharge and major morbidities: IVH severity was graded as by Papile (29). PH was defined by the presence of frank blood from the trachea, which required prompt intervention as an increased respiratory support or RBC transfusions, as well as a multi-lobular

opacity on chest x-rays (30). Persistent pulmonary hypertension (PPHN) was diagnosed by transthoracic echocardiography with a flattening of the interventricular septum and right ventricular systolic pressure (measured by tricuspid regurgitation) at least equal systemic systolic pressure or right to left shunt *via* the ductus arteriosus (31). NEC was defined according to Bell et al. (32), while spontaneous intestinal perforation (SIP) was diagnosed by explorative laparotomy, which is standard care in our institution in case of radiologic evidence of intestinal perforation. The classification of ROP was done according to the international classification (33). BPD was rated according to the National Institute of Health classification (34).

The study was approved by the Institutional Review Board (EA2/053/18).

Statistical Analysis

Statistical comparisons were performed with SPSS for Windows 26.0 (SPSS, Inc., Chicago, Illinois). For analysis of continuous variables, we used Mann-Whitney *U*-test, and categorical variables were compared by two-sided Fisher's exact test.

p -values < 0.05 were regarded to be of statistical significance. Binary logistic regression analysis was performed to examine independent factors for mortality, EOI, I-ENP, LOI, prevalence of hemorrhagic events, and BPD. A Kaplan–Meier curve was used to illustrate mortality during the neonatal period.

RESULTS

Among a total number of 135 preterm infants with a GA < 28 weeks and a birth weight below the 10th percentile, we identified 63 infants with severe IUGR (birth weight ≤ 3 rd percentile), out of which eight received primary palliative care or were excluded due to major congenital malformations or chromosomal abnormalities. Another six infants were excluded due to missing signs of restricted placental perfusion (Figure 1). The remaining eligible 49 infants were matched by GA, sex, and year of birth in a 1:2 fashion to 98 controls. The groups of IUGR-ELGANs and controls significantly differed by birth weight, mode of delivery, and umbilical artery pH but not Apgar scores (Table 1).

Aberrant Hematopoiesis

CBC numbers taken at primary care indicated excessively stimulated erythropoiesis with significantly higher number of NRBC in IUGR-ELGANs, despite almost identical hemoglobin concentration. PLT count and fibrinogen concentration were lower in severe IUGR; however, the incidence of severe thrombocytopenia or abnormal coagulation screens did not differ between both groups. WBC, ANC, and count of immature granulocytes in IUGR-ELGANs were lower at birth and with higher rates of severe neutropenia. The complete data are shown in Table 2.

On the third day of life, PLT, ANC, and immature granulocytes decreased further with significantly higher rates of severe thrombocytopenia and severe neutropenia (Table 3).

Differences in Management and Interventions

During the first week of life, the percentage of infants who received transfusions of RBC, PLT, or FFP and the respective total volume per kilogram were higher in IUGR-ELGANs compared to controls (Table 4). Figure 2 illustrates the pattern of transfusion of the respective blood component during the first 7 days after birth, indicating a decreased frequency of RBC transfusion after day 4, rather constant transfusion rates of PLTs until the end of the first week, and a majority of FFP transfusions on day 1. Rates of repeated transfusions of all blood products were higher in IUGR-ELGANs (Table 4, Supplementary Figure 1). None of the infants in our study received intrauterine RBC transfusions or had an alloimmunization requiring exchange transfusions.

IUGR-ELGANs received longer antibiotic treatment, more often second-line antibiotics as vancomycin and/or meropenem, and an already initiated antibiotic treatment was more often escalated to second-line antibiotics (Table 4, Supplementary Figure 2).

TABLE 2 | Blood cell counts, coagulation screens, and inflammatory markers on admission.

	Severe IUGR (n = 49)	Controls (n = 98)	p-value
Red blood cells			
Hemoglobin (g/dl)	14.6 (7.7–18)	15.1 (3.9–22.8)	0.46
NRBC (/nl)	11.2 (0.3–75.5)	2.4 (0.15–38.0)	< 0.001
NRBC ≥ 8 /nl	30/47 (63.8)	19/94 (20.2)	< 0.001
Platelets			
PLT count (/nl)	115 (32–232)	220 (58–479)	< 0.001
< 150 /nl	36/49 (73.5)	13/98 (13.3)	< 0.001
< 100 /nl	17 (34.7)	4 (4.1)	< 0.001
< 50 /nl	2 (4.1)	0 (0)	0.11
Coagulation screen			
INR	1.58 (1.09–6.51)	1.59 (1.07–5.27)	0.60
aPTT (s)	60 (42–130)	65 (19–240)	0.13
aPTT > 158 s	0/45 (0)	2/81 (2.5)	0.54
Fibrinogen (mg/dl)	98 (60–704)	143 (60–546)	< 0.001
Fibrinogen < 70 mg/dl	6/44 (13.6)	4/83 (4.8)	0.09
White blood cells			
WBC count (/nl)	4.6 (1.7–14.4)	9.4 (3.2–63.8)	< 0.001
ANC (/μl)	522 (46–3,395)	2,817 (103–40,716)	< 0.001
< 1000 /μl	38/47 (80.9)	19/93 (20.4)	< 0.001
< 500 /μl	22/47 (44.9)	7/93 (7.5)	< 0.001
Immature granulocytes (/μl)	0 (0–521)	258 (0–15,948)	< 0.001
Inflammatory parameters			
IL-6 (ng/L)	27 (0–304)	65.2 (0–50,000)	< 0.01
CrP (mg/dl)	0.3 (0–3.3)	0.3 (0–19.4)	0.14

In addition to absolute numbers, standard cutoff values defining severity of cytopenias are considered. Categorical data are given as n (%), continuous data as median (range).

TABLE 3 | This table shows PLT and WBC counts on the third day of life.

	Severe IUGR (n = 49)	Controls (n = 98)	p-value
Platelets			
PLT count (/nl)	73 (29–200)	197 (83–498)	< 0.001
< 150 /nl	36 (73.5)	4 (4.1)	< 0.001
< 50 /nl	8 (16.3)	0 (0)	< 0.001
White blood cells			
WBC count (/nl)	4.6 (1.7–14.4)	9.4 (3.2–63.8)	< 0.001
ANC (/μl)	1,320 (136–5,222)	5,856 (904–62,437)	< 0.001
< 500 /μl	9/34 (26.5)	0/54 (0.0)	< 0.001
Immature granulocytes (/μl)	131 (0–1,027)	345 (0–13,998)	< 0.001

In addition to absolute numbers, standard cutoff values defining severity of cytopenias are considered. Categorical data are given as n (%), continuous data as median (range).

IUGR-ELGAN needed more respiratory support with mechanical ventilation and longer oxygen supplementation relative to days of survival or until discharge from the hospital and received more doses of surfactant (Table 4).

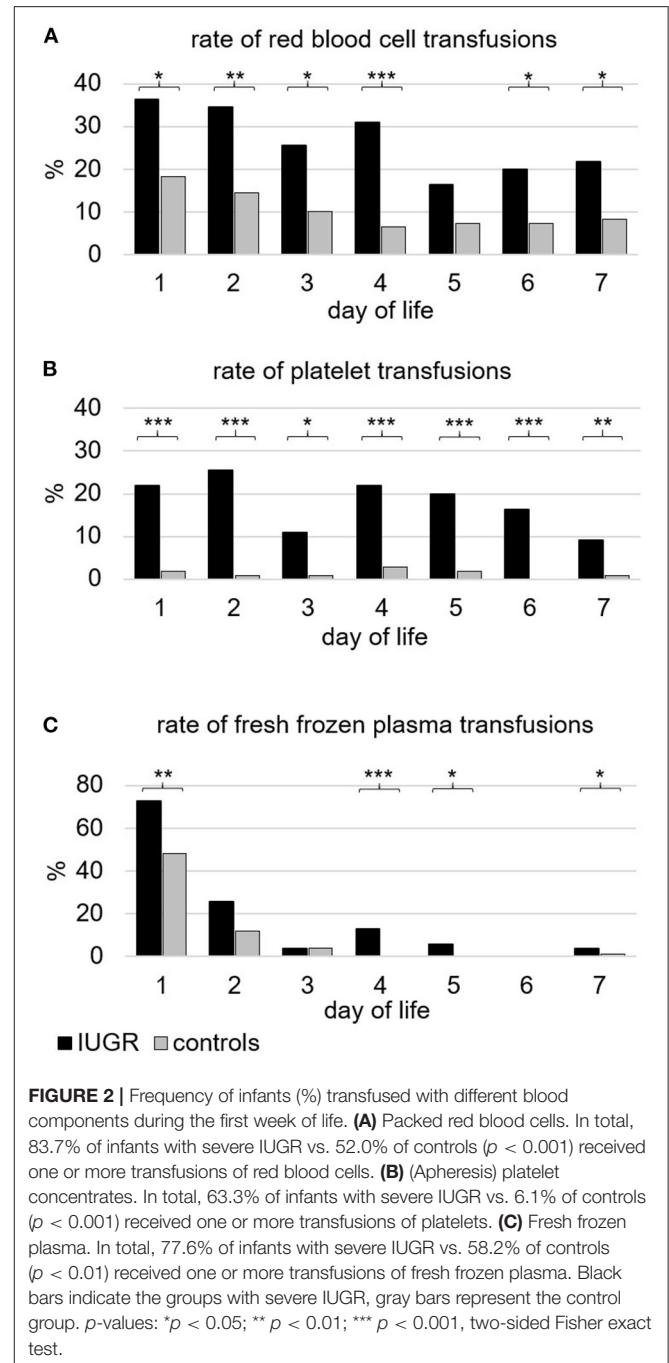
TABLE 4 | Treatment of ELGANs.

	Severe IUGR (n = 49)	Controls (n = 98)	p-value
Transfusions			
RBC (ml/kg)	33.7 (0–164.5)	12.2 (0–77.1)	<0.001
PLT (ml/kg)	21.3 (0–102.8)	0.0 (0–81.4)	<0.001
FFP (ml/kg)	20.3 (0–96.8)	14.7 (0–71.4)	<0.001
Rate of repeated RBC	27 (55.1)	15 (15.3)	<0.001
Rate of repeated PLT	19 (38.8)	1 (1.0)	<0.001
Rate of repeated FFP	18 (36.7)	2 (2.0)	<0.001
Antibiotic treatment			
Days of antibiotic treatment	15 (0–92)	8 (0–88)	<0.001
Antibiotic treatment on day 7 of life	23/43 (65.1)	24/98 (24.5)	<0.001
Relative duration of antibiotic treatment until day 7 of life	271/321 (84.4)	399/686 (58.2)	<0.001
Second-line antibiotics	32 (65.3)	22 (22.4)	<0.001
Escalation to second-line antibiotics or antibiotic reserve	22 (44.9)	13 (13.3)	<0.001
Ventilation			
Days on invasive ventilation	29/34 (85.3)	43/93 (46.2)	<0.001
Percent days on invasive ventilation/days until death or discharge	30.4 (0–100)	6.8 (0–100)	<0.001
Doses of surfactant	2 (0–3)	1 (0–3)	<0.01
Days on supplemental Oxygen	60 (1–263)	43.5 (0–160)	0.06
Percentage days on supplemental oxygen/days until death or discharge	100 (1.2–100)	59.1 (0–100)	<0.001

Transfusions of blood components during the first week of life, antibiotic treatment, and respiratory support are given as median and range. Rates of repeated transfusions during the first week are given as n, (%).

Neonatal Morbidities Infections

In IUGR-ELGANs, chorioamnionitis occurred less often, whereas the rates of EOI as well as I-ENP and LOI were significantly higher. The odds ratio (OR) for EOI was 5.46 (95% CI, 2.34–12.73), the OR for I-ENP was 6.83 (95% CI, 3.14–14.89), and the OR for the occurrence of at least one LOI was 2.63 (95% CI, 1.29–5.41) in IUGR-ELGANs compared to controls (Table 5). During the first 72 h of life, 40.8% of IUGR-ELGANs had elevated inflammation parameters compared to 11.2% in the control group ($p < 0.001$). Although the rates of acquired infections subsequently decreased in both groups between days 4 and 7, IUGR-ELGANs still significantly more often suffered from infections (18.4 vs. 6.1%, $p < 0.05$) (Table 5). As shown



in Supplementary Figure 2 in each group, 77.6% of infants received primary antibiotic treatment, although only 39.5% of infants with severe IUGR and 56.6% of the control group met the laboratory criteria of infection on the first day ($p < 0.05$). However, in both groups, all blood culture examinations taken during the first 3 days of life remained sterile after 5 days of incubation (Table 5). Within the first week of life, IUGR remained the only independent variable (OR 6.18; 95% CI, 2.49–15.33; $p < 0.001$) for increased inflammatory

TABLE 5 | Neonatal morbidities and mortality.

	Severe IUGR (n = 49)	Controls (n = 98)	p-value
Inflammation			
Elevated inflammatory parameter at birth	10 (20.4)	38 (38.7)	<0.05
EOI	20 (40.8)	11 (11.2)	<0.001
Acquired infection DOL 4 to 7	9 (18.4%)	6 (6.1%)	<0.05
I-ENP	29 (59.2)	17 (17.3)	<0.001
Positive blood culture	2/48 (4.2)	1/92 (1.1)	1.0
≥1 LOI	33 (67.3)	41 (41.8)	<0.01
Positive blood culture	18/108 (16.7)	22/102 (21.6)	0.39
Coagulase negative <i>staphylococci</i>	13/18 (72.2)	14/22 (63.6)	0.73
Pneumonia	2/49 (4.1)	6/98 (6.1)	0.72
Hemorrhagic events			
IVH, all grades	7 (14.3)	14 (14.3)	1.0
IVH, > grade 2	5 (10.2)	5 (5.1)	0.30
PH	2 (4.1)	2 (2.0)	0.60
ROP			
All stages	29/34 (85.3)	43/93 (46.2)	<0.001
≥stage 2	9/34 (26.5)	15/93 (16.1)	0.42
Intervention	7/34 (20.6)	8/93 (8.6)	0.12
Abdominal morbidity			
SIP	4 (8.2)	2 (2.0)	0.10
NEC	3 (6.1)	4 (4.1)	0.69
Pulmonary morbidity			
PPHN	11 (22.4)	3 (3.1)	<0.001
BPD ₃₆ or death	48 (98.0)	64 (65.3)	<0.001
Severe BPD or death	21 (42.9)	17 (17.3)	<0.01
O ₂ requirement at 36 weeks postmenstrual age	21/34 (61.8)	22/91 (24.2)	<0.001
Late PAH	10/35 (28.6)	8/91 (8.8)	<0.001
Severe pulmonary morbidity	20 (40.8)	15 (15.3)	<0.01
Death			
	18 (36.7)	7 (7.1)	<0.001

Severe pulmonary morbidity is defined as PH or PPHN or severe BPD or PAH. Variables are given as n (%). DOL = day of life, EOI = early-onset infection (<72 h), I-ENP = infection in the early neonatal period (first 7 days), LOI = late-onset infection (>1 week of life).

markers as analyzed by binary logistic regression (variables included GA, IUGR, WBC, and ANC at birth).

Hemorrhage

As measures for the implication of thrombocytopenia and coagulation disorders, the incidences of IVH (all grades), severe IVH (> grade 2), PH, and combined major hemorrhage (defined as severe IVH or PH) were evaluated but did not differ between IUGR-ELGANs and controls (Table 5). In each group, one infant had both IVH and PH (Table 5). Using binary regression analysis (including the following variables: IUGR, GA, PLT counts at birth and at third day of life and volume of PLT transfusions), the only

independent risk factor for hemorrhage remained GA (OR 0.58; 95% CI, 0.37–0.91; $p = 0.02$).

Pulmonary Morbidity

PPHN occurred more often in IUGR-ELGANs. The incidence of moderate to severe BPD at 36 weeks of postmenstrual age, the rate of the composite outcome BPD₃₆ or death, and late pulmonary arterial hypertension (PAH) were significantly higher in IUGR-ELGANs than in controls (Table 5). A major pulmonary morbidity (defined as PH or PPHN or development of severe BPD or PAH) was associated with IUGR with an OR of 3.82 (95% CI, 1.73–8.42). In a binary logistic regression (including GA, IUGR, duration of mechanical ventilation, total number of infections, and frequency of transfusion of RBCs, PLTs, or FFP), only GA (OR 0.36; 95% CI, 0.18–0.72; $p < 0.05$), IUGR (OR 13.57; 95% CI, 0.138–133.77; $p < 0.05$), and duration of mechanical ventilation (OR 1.10; 95% CI, 1.00–1.22; $p < 0.05$) remained independent factors for BPD and BPD or death.

Major Abdominal Morbidities

NEC and SIP were not statistically different between both groups (Table 5).

ROP

ROP (all stages) occurred more often in IUGR-ELGANs than in controls, but neither the rate of ROP ≥ stage 2 nor the need for intervention were higher (Table 5).

Mortality

The mortality rate prior to discharge was significantly higher in IUGR-ELGANs (Figure 3) with an OR of 7.55 (95% CI, 2.88–19.78) and IUGR (OR 6.95; 95% CI, 1.98–24.42; $p = 0.002$) remained together with GA (OR 0.42; 95% CI, 0.24–0.73; $p = 0.002$) the only independent variable in a binary logistic regression (variables included GA, IUGR, severe pulmonary morbidity, severe abdominal complication, and I-ENP). Supplementary Table 1 summarizes hematologic profile, comorbidities, and interventions for deceased infants and survivors in both groups, respectively. In the early neonatal period, sepsis and PPHN were the main causes of death (Table 6 and Supplementary Table 1) in IUGR-ELGANs, yet without reaching significance level, while severe BPD with PAH caused late mortality ($p < 0.01$). In the control group, mortality was associated with LOI and major abdominal morbidity. In both groups, deceased infants were invasively ventilated longer and received more frequently and longer supplemental oxygen, antibiotic treatment (relative to days of survival or until discharge), and more RBC transfusions. Furthermore, deceased IUGR infants received more PLT transfusions (Supplementary Table 1).

Association of Disturbed Hematopoiesis and Major Morbidities in the Subgroup of IUGR-ELGANs

In binary logistic regression analysis of disturbed hematopoiesis (NRBC ≥ 8/nl, severe thrombocytopenia at birth or on the third day of life, ANC < 500/μl, GA, birth weight), only GA was an

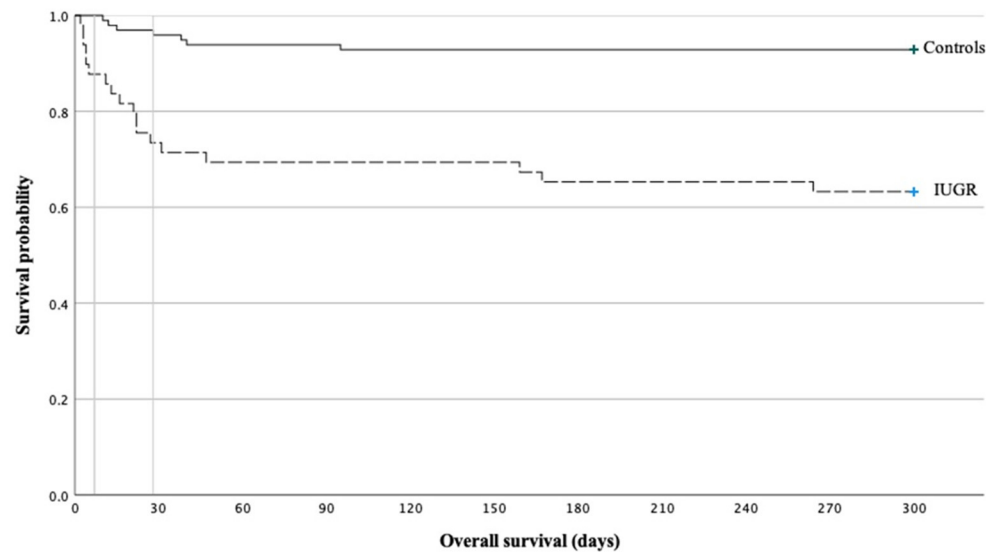


FIGURE 3 | Kaplan–Meier curve on the mortality of ELGAN with severe IUGR vs. controls.

TABLE 6 | Causes of mortality in infants with severe IUGR and controls.

	Severe IUGR (n = 18)	Controls (n = 7)
Neonatal Infections, n (%)	4 (22.2)	2 (28.6)
Sepsis	4 (22.2)	1 (14.3)
Pneumonia	0	2 (28.6)
Abdominal Complications	4 (22.2)	3 (50.0)
NEC	1 (5.6)	1 (14.3)
SIP	1 (5.6)	0 (0.0)
Others	2 (11.1)	2 (28.6)
Lung Diseases/Complications	8 (44.4)	0 (0)
RDS	1 (5.6)	0 (0)
PPHN	2 (11.1)	0 (0)
BPD + PAH	5 (27.8)	0 (0)
Hemorrhagic events	1 (5.6)	0 (0)
IVH	1 (5.6)	0 (0)
Other	1 (5.6)	1 (14.3)

Categorical data are given as n (%).

independent variable for mortality in IUGR-ELGANS (OR 0.28; 95% CI, 0.09–0.933; $p < 0.05$).

DISCUSSION

Hematological Disorders

Our retrospective cohort study confirms the high incidence of early-onset thrombocytopenia (73.5%) and neutropenia (80.9%) in ELGANS with severe IUGR. Increased numbers of NRBC may indicate that chronic fetal hypoxia shifted hematopoiesis toward erythropoiesis at the expense of megakaryopoiesis and granulopoiesis (35, 36). Although both early-onset thrombocytopenia and neutropenia due to maternal or placental

factors are normally mild to moderate and self-limiting within the first week of life (36, 37), we aimed to analyze the consequences on the transfusions of donor blood components and antibiotics.

Anemia and Red Blood Cell Transfusions

Excessive stimulation of erythropoiesis was indicated by massively elevated absolute count of NRBCs. Immediately after birth, the number of NRBC directly correlates with the intrauterine distress and is known to be associated with poor neonatal outcomes (38, 39). Notably, initial hemoglobin concentrations were very similar in IUGR-ELGANS and controls (Table 2), suggesting a shortened life span of RBCs after stress erythropoiesis (40). The higher frequency and volume of RBC transfusion during the first week of life, however, might indicate a higher amount of iatrogenic blood loss in IUGR-ELGANS (Figures 2, 3) (41). Transfusion volumes of 15–20 ml/kg per transfusion were the recommended volumes at that time (42). Due to the lack of robust evidence especially in the beginning of the study period, no standard transfusion threshold was defined in our institution. With the participation in the ETTNO trial (43) from 2011 onwards, infants received RBC transfusions depending on the randomization or (if not included in the RCT) according to the restrictive thresholds of the ETTNO protocol due to the evidence of the systematic review of Whyte and Kirpalani (44). We cannot distinguish whether the higher transfusion rates reflect the same intensity of laboratory diagnostics in a situation of lower total blood volume due to lower birth weight or whether the often more critical conditions urged the attending physician to maintain higher Hb levels in order to optimize circulatory stability and oxygen carrier capacity. Standard procedures for blood examinations at admission and third day of life were the same for all ELGANS during the whole study period.

This raises the question on a higher incidence of NEC and severe ROP that previously have been associated with RBC transfusions in observational studies (45). However, there was no difference in our study for the incidence of NEC and severe ROP or the need for intervention in ROP, although an increased *a priori* risk for NEC or severe ROP has been reported in preterm infants with IUGR (46, 47). A Cochrane meta-analysis as well as two recent RCTs on RBC transfusion thresholds did not show any significant association of death, major morbidities (NEC, ROP, and BPD), or impaired neurodevelopmental outcome in infants transfused according to restrictive vs. liberal transfusion thresholds (43, 44, 48, 49). An attractive alternative approach to avoid RBC transfusions not only by late cord clamping, reduction of iatrogenic blood loss (e.g., no routine coagulation screening in non-bleeding infants), and iron supplementation could be the use of recombinant human erythropoietin (rhEPO), recently shown to be effective in reducing transfusion needs in extreme low birth weight infants (50).

Thrombocytopenia and Platelet Transfusions

In our study, IUGR-ELGANs had lower PLT at birth, but severe thrombocytopenia was rare. Besides the suppression of megakaryopoiesis by excessive erythropoiesis, abnormal villous vessels in placental dysfunction are discussed, causing microangiopathic sequestration and destruction of PLT (35). Notably, there was no difference in major hemorrhage when comparing IUGR-ELGANs with controls, and GA was the only independent risk factor in the regression analysis.

Infants with severe IUGR, however, received intriguingly more PLT transfusions during the first week of life (Figure 2B). As recently reviewed, thresholds for PLT transfusions in very low birth weight infants vary widely (51). During the study period, no clearly defined threshold for PLT transfusions existed in our neonatal intensive care unit (NICU). Depending on the general condition, transfusions of PLT were administered at PLT counts of 50 to 100/nl in a non-bleeding patient; therefore, most of them have been given in the intention to prevent major hemorrhage. We cannot conclude whether this contributed to the low incidence of major hemorrhage. The recent large RCT on PLT transfusions (PlaNeT2), however, showed a higher risk of death or major hemorrhage in the liberal threshold group <50/nl compared to a group receiving PLT transfusions at a restrictive threshold of <25/nl (14). In our study, a higher frequency and volume of PLT transfusions were associated with a higher mortality rate in IUGR-ELGANs, which is in line with the results of PlaNeT2 (14). To date, it remains to be elucidated whether ELGANs with severe IUGR may require individualized or personalized PLT transfusion thresholds if the coagulation screen (or PLT function) may suggest a higher bleeding risk as result of liver dysfunction due to highly stimulated erythropoiesis.

Neutropenia and Infection

The hematopoietic shift toward excessive erythropoiesis is likely to cause the severe neutropenia in IUGR-ELGANs. Besides, neutropenia could also result from a placenta-derived factor that causes in pregnancy-induced hypertension *per se* a reduced

production of neutrophils (52). Considering the high mortality rate and significant long-term morbidity (53), the question of the use of (initial) prophylactic antibiotic treatment or the implementation of antibiotic stewardship requires specific attention. In our study, 23/38 (60.5%) of all IUGR-ELGANs treated with antibiotics on the first day after birth did not exhibit elevated inflammatory parameters. However, 7 out of these 23 infants (30.4%) and further 8 out of 11 infants (72%) without initial antibiotic treatment after birth showed a secondary raise of inflammatory parameters. Due to the suppressed granulopoiesis, infection prevention control should eventually include antibiotic therapy in IUGR-ELGAN during the quantitative and functional recovery of granulopoiesis, despite the evidence that a prolonged initial empiric antibiotic treatment (≥ 5 days) may lead to a higher rate of LOI, NEC, BPD, ROP, and mortality (28, 54). However, whether IUGR-ELGANs exhibit a reduced cellular or humoral defense against bacterial infection during the recovery of granulopoiesis deserves further clinical and laboratory research.

The higher rate of chorioamnionitis in controls might reflect the cause of preterm birth in controls. Intriguingly, the postnatal risk for developing I-ENP was significantly elevated in IUGR-ELGANs (Table 5). In a binary logistic regression, IUGR remained the only independent variable for increased inflammatory markers during the first week of life. So far, it is unclear whether the inflammatory response is primarily associated with early-onset neutropenia (55, 56). It should be discussed whether the higher rate of I-ENP reflects not only initially impaired granulopoiesis, but also reduced cellular function in stress granulopoiesis in IUGR-ELGANs (Table 5) (57). Notably, on day 7, 62.7% of IUGR-ELGANs were treated with antibiotics compared to 24.5% of controls (Table 4, Supplementary Figure 2). However, there was also a significant association between severe IUGR and the incidence of at least one late inflammatory response. The German national surveillance system for nosocomial infection in very low birth-weight infants (NEO-KISS) clearly demonstrated correlation between the infants' birthweight and the incidence of infections (58). Furthermore, a subgroup analysis of a recent cohort study of the German Neonatal Network associated IUGR with early- and late-onset sepsis, as well as clinically suspected and culture-proven sepsis (59). Longer and repetitive antibiotic treatment was shown in previous studies (58) and our cohort. The implication on antibiotic stewardship and long-term morbidities is yet unclear.

Morbidities and Mortality

The well-known association of IUGR and BPD (60, 61) is also found in our analysis of IUGR-ELGANs. The development of BPD was independently associated with GA, IUGR, and days on mechanical ventilation, but the volume of transfusions did not reach significance for the blood components or frequency of infections in binary logistic regression analysis. However, our cohort is likely too small to show the effect of PLT transfusion compared to the much more important risk factors such as GA, birthweight, or invasive ventilation (47). The latter might be a contributing factor, as the secondary outcome of PlaNeT2 showed a higher incidence of BPD in the group with liberal transfusion threshold. PLTs have an immunologic function

and transfusions of adult PLT might cause a proinflammatory response in preterm infants (14). The pathophysiology could include the release of biological response modifiers from stored adult PLTs, claimed to worsen inflammatory injury and BPD (62, 63).

The population size in our subgroup of IUGR-ELGANs does not allow to associate the degree of aberrant hematopoietic findings (e.g., severe thrombocytopenia with a platelet number <50/nl) to the frequency of certain morbidities.

Our study showed a more than sevenfold higher mortality risk for IUGR ELGANs compared to controls comparable to former studies (60, 64). A subgroup analysis of the deceased IUGR infants did not show any association with infections or other life-threatening comorbidities such as severe abdominal complications (**Supplementary Table 1**). In line with a recent cohort study (65), we showed that a severe pulmonary morbidity occurred more often in IUGR-ELGANs and contributed to the early and late mortality in IUGR infants. Treatment of the later deceased infants in both groups was characterized by more intensive care with longer need of invasive ventilation and supplemental oxygen relative to days of survival, prolonged antibiotic treatment, and more RBC and PLT transfusions implicating the serious condition (**Supplementary Table 1**).

The retrospective character of this study bears the risk of uncertain causality, and the long study period can lead to bias due to changes in scientific knowledge and altered standard operating procedures. As this is a monocentric study, a further limitation is the low number of IUGR-ELGANs. However, our case group was carefully matched not only according to GA and sex, but also with regard to the year of neonatal care in order to consider eventual changes in clinical routine. Regarding the low number of cases, the 1:2 allocation strengthens the power of the statistical analysis and therefore provides substantial information on an especially vulnerable group of extreme preterm infants regarding the severe growth restriction.

REFERENCES

- Romo A, Carceller R, Tobajas J. Intrauterine growth retardation (IUGR): epidemiology and etiology. *Pediatr Endocrinol Rev PER*. (2009) 6:332–6.
- Nardoza LMM, Caetano ACR, Zamarian ACP, Mazzola JB, Silva CP, Marçal VMG, et al. Fetal growth restriction: current knowledge. *Arch Gynecol Obstet*. (2017) 295:1061–77. doi: 10.1007/s00404-017-4341-9
- Gilbert WM, Danielsen B. Pregnancy outcomes associated with intrauterine growth restriction. *Am J Obstet Gynecol*. (2003) 188:1596–9. doi: 10.1067/mob.2003.384
- Ott WJ. Intrauterine growth retardation and preterm delivery. *Am J Obstet Gynecol*. (1993) 168:1710–7. doi: 10.1016/0002-9378(93)90681-8
- Malhotra A, Allison BJ, Castillo-Melendez M, Jenkin G, Polglase GR, Miller SL. Neonatal morbidities of fetal growth restriction: pathophysiology and impact. *Front Endocrinol*. (2019) 10:55. doi: 10.3389/fendo.2019.00055
- Thilaganathan B, Athanasiou S, Ozmen S, Creighton S, Watson NR, Nicolaidis KH. Umbilical cord blood erythroblast count as an index of intrauterine hypoxia. *Arch Dis Child Fetal Neonatal Ed*. (1994) 70:F192–4. doi: 10.1136/fn.70.3.F192
- Sola-Visner M, Saxonhouse MA, Brown RE. Neonatal thrombocytopenia: what we do and don't know. *Early Hum Dev*. (2008) 84:499–506. doi: 10.1016/j.earlhumdev.2008.06.004
- Christensen RD, Yoder BA, Baer VL, Snow GL, Butler A. Early-onset neutropenia in small-for-gestational-age infants. *Pediatrics*. (2015) 136:e1259–67. doi: 10.1542/peds.2015-1638
- Christensen RD, Baer VL, Henry E, Snow GL, Butler A, Sola-Visner MC. Thrombocytopenia in small-for-gestational-age infants. *Pediatrics*. (2015) 136:e361–70. doi: 10.1542/peds.2014-4182
- Longo S, Borghesi A, Tziella C, Stronati M. IUGR and infections. *Early Hum Dev*. (2014) 90:S42–4. doi: 10.1016/S0378-3782(14)70014-3
- Gunnink SE, Vlug R, Fijnvandraat K, van der Bom JG, Stanworth SJ, Lopriore E. Neonatal thrombocytopenia: etiology, management and outcome. *Expert Rev Hematol*. (2014) 7:387–95. doi: 10.1586/17474086.2014.902301
- Vlug RD, Lopriore E, Janssen M, Middeldorp JM, Rath MEA, Smits-Wintjens VEJ. Thrombocytopenia in neonates with polycythemia: incidence, risk factors and clinical outcome. *Expert Rev Hematol*. (2015) 8:123–9. doi: 10.1586/17474086.2015.997705

In summary, the disturbed hematopoiesis in IUGR-ELGAN deserves particular attention. Infection prevention control should eventually include antibiotic treatment during the recovery period of granulopoiesis. Although rather restrictive transfusion thresholds and policies appear to be beneficial, this very vulnerable group of infants is not adequately represented in current RCTs on neonatal transfusions.

DATA AVAILABILITY STATEMENT

The raw data supporting the conclusions of this article will be made available by the authors, without undue reservation.

ETHICS STATEMENT

The studies involving human participants were reviewed and approved by Institution Review Board, Charité - University Medicine, Berlin, Protocol No. EA2/053/18. Written informed consent from the participants' legal guardian/next of kin was not required to participate in this study in accordance with the national legislation and the institutional requirements.

AUTHOR CONTRIBUTIONS

CD and TM developed the study concept and design. NR and TM obtained, analyzed, interpreted the data, and wrote the first draft of the manuscript. CD contributed to interpretation of the results. CD and CB significantly contributed to the discussion and revised the first draft. All authors contributed to the article and approved the submitted version.

SUPPLEMENTARY MATERIAL

The Supplementary Material for this article can be found online at: <https://www.frontiersin.org/articles/10.3389/fped.2021.728607/full#supplementary-material>

13. Resch E, Hinkas O, Urlesberger B, Resch B. Neonatal thrombocytopenia-causes and outcomes following platelet transfusions. *Eur J Pediatr.* (2018) 177:1045–52. doi: 10.1007/s00431-018-3153-7
14. Curley A, Stanworth SJ, Willoughby K, Fustolo-Gunnink SF, Venkatesh V, Hudson C, et al. Randomized trial of platelet-transfusion thresholds in neonates. *N Engl J Med.* (2019) 380:242–51. doi: 10.1056/NEJMoa1807320
15. Kumar J, Dutta S, Sundaram V, Saini SS, Sharma RR, Varma N. Platelet transfusion for PDA closure in preterm infants: a randomized controlled trial. *Pediatrics.* (2019) 143:e20182565. doi: 10.1542/peds.2018-2565
16. Gómez O, Figueras F, Fernández S, Bennasar M, Martínez JM, Puerto B, et al. Reference ranges for uterine artery mean pulsatility index at 11–41 weeks of gestation. *Ultrasound Obstet Gynecol.* (2008) 32:128–32. doi: 10.1002/uog.5315
17. Mureşan D, Rotar IC, Stamatian F. The usefulness of fetal Doppler evaluation in early versus late onset intrauterine growth restriction. *Rev Literat Med Ultrason.* (2016) 18:103–9. doi: 10.11152/mu.2013.2066.181.dop
18. Mifsud W, Sebire NJ. Placental pathology in early-onset and late-onset fetal growth restriction. *Fetal Diagn Ther.* (2014) 36:117–28. doi: 10.1159/000359969
19. Christensen RD, Henry E, Andres RL, Bennett ST. Reference ranges for blood concentrations of nucleated red blood cells in neonates. *Neonatology.* (2011) 99:289–94. doi: 10.1159/000320148
20. Wiedmeier SE, Henry E, Sola-Visner MC, Christensen RD. Platelet reference ranges for neonates, defined using data from over 47,000 patients in a multihospital healthcare system. *J Perinatol.* (2009) 29:130–6. doi: 10.1038/jp.2008.141
21. Schmutz N, Henry E, Jopling J, Christensen RD. Expected ranges for blood neutrophil concentrations of neonates: the Manroe and Mouzinho charts revisited. *J Perinatol.* (2008) 28:275–81. doi: 10.1038/sj.jp.7211916
22. Neary E, Okafor I, Al-Awaysheh F, Kirkham C, Sheehan K, Mooney C, et al. Laboratory coagulation parameters in extremely premature infants born earlier than 27 gestational weeks upon admission to a neonatal intensive care unit. *Neonatology.* (2013) 104:222–7. doi: 10.1159/000353366
23. Doellner H, Arntzen KJ, Haereid PE, Aag S, Austgulen R. Interleukin-6 concentrations in neonates evaluated for sepsis. *J Pediatr.* (1998) 132:295–9. doi: 10.1016/S0022-3476(98)70448-2
24. Messer J, Eyer D, Donato L, Gallati H, Matis J, Simeoni U. Evaluation of interleukin-6 and soluble receptors of tumor necrosis factor for early diagnosis of neonatal infection. *J Pediatr.* (1996) 129:574–80. doi: 10.1016/S0022-3476(96)70123-3
25. Redline RW, Faye-Petersen O, Heller D, Qureshi F, Savell V, Vogler C. Society for Pediatric Pathology, Perinatal Section, Amniotic Fluid Infection Nosology Committee. Amniotic infection syndrome: nosology and reproducibility of placental reaction patterns. *Pediatr Dev Pathol.* (2003) 6:435–48. doi: 10.1007/s10024-003-7070-y
26. Kuzniewicz MW, Puopolo KM, Fischer A, Walsh EM, Li S, Newman TB, Kipnis P, et al. Quantitative, risk-based approach to the management of neonatal early-onset sepsis. *JAMA Pediatr.* (2017) 171:365–71. doi: 10.1001/jamapediatrics.2016.4678
27. Wagstaff JS, Durrant RJ, Newman MG, Eason R, Ward RM, Sherwin CMT, Enioutina EY. Antibiotic treatment of suspected and confirmed neonatal sepsis within 28 days of birth: a retrospective analysis. *Front Pharmacol.* (2019) 10:1191. doi: 10.3389/fphar.2019.01191
28. Ting JY, Synnes A, Roberts A, Deshpandey A, Dow K, Yoon EW, et al. Association between antibiotic use and neonatal mortality and morbidities in very low-birth-weight infants without culture-proven sepsis or necrotizing enterocolitis. *JAMA Pediatr.* (2016) 170:1181–7. doi: 10.1001/jamapediatrics.2016.2132
29. Papile LA, Burstein J, Burstein R, Koffler H. Incidence and evolution of subependymal and intraventricular hemorrhage: a study of infants with birth weights less than 1,500 gm. *J Pediatr.* (1978) 92:529–34. doi: 10.1016/S0022-3476(78)80282-0
30. Usemann J, Garten L, Bühner C, Dame C, Cremer M. Fresh frozen plasma transfusion - a risk factor for pulmonary hemorrhage in extremely low birth weight infants? *J Perinat Med.* (2017) 45:627–33. doi: 10.1515/jpm-2016-0309
31. Jain A, McNamara PJ. Persistent pulmonary hypertension of the newborn: advances in diagnosis and treatment. *Semin Fetal Neonatal Med.* (2015) 20:262–71. doi: 10.1016/j.siny.2015.03.001
32. Bell MJ, Ternberg JL, Feigin RD, Keating JP, Marshall R, Barton L, et al. Neonatal necrotizing enterocolitis. Therapeutic decisions based upon clinical staging. *Ann Surg.* (1978) 187:1–7. doi: 10.1097/0000658-197801000-00001
33. International Committee for the Classification of Retinopathy of Prematurity. The international classification of retinopathy of prematurity revisited. *Arch Ophthalmol Chic Ill.* (2005) 123:991–9. doi: 10.1001/archoph.123.7.991
34. Jobe AH, Bancalari E. Bronchopulmonary dysplasia. *Am J Respir Crit Care Med.* (2001) 163:1723–9. doi: 10.1164/ajrccm.163.7.2011060
35. Black LV, Maheshwari A. Disorders of the fetomaternal unit: hematologic manifestations in the fetus and neonate. *Semin Perinatol.* (2009) 33:12–9. doi: 10.1053/j.semperi.2008.10.005
36. Cremer M, Sallmon H, Kling PJ, Bühner C, Dame C. Thrombocytopenia and platelet transfusion in the neonate. *Semin Fetal Neonatal Med.* (2016) 21:10–8. doi: 10.1016/j.siny.2015.11.001
37. Del Vecchio A, Christensen RD. Neonatal neutropenia: what diagnostic evaluation is needed and when is treatment recommended? *Early Hum Dev.* (2012) 88:S19–24. doi: 10.1016/S0378-3782(12)70007-5
38. Minior VK, Levine B, Ferber A, Guller S, Divon MY. Nucleated red blood cells as a marker of acute and chronic fetal hypoxia in a rat model. *Rambam Maimonides Med J.* (2017) 8:e0025. doi: 10.5041/RMMJ.10302
39. Cremer M, Roll S, Gräf C, Weimann A, Bühner C, Dame C. Nucleated red blood cells as marker for an increased risk of unfavorable outcome and mortality in very low birth weight infants. *Early Hum Dev.* (2015) 91:559–63. doi: 10.1016/j.earlhumdev.2015.06.004
40. Kuruvilla DJ, Widness JA, Nalbant D, Schmidt RL, Mock DM, Veng-Pedersen P, et al. Method to evaluate fetal erythropoiesis from postnatal survival of fetal RBCs. *AAPS J.* (2015) 17:1246–54. doi: 10.1208/s12248-015-9784-y
41. Howarth C, Banerjee J, Aladangady N. Red blood cell transfusion in preterm infants: current evidence and controversies. *Neonatology.* (2018) 114:7–16. doi: 10.1159/000486584
42. Ärzteblatt Deutsches. Richtlinien zur Gewinnung von Blut und Blutbestandteilen und zur Anwendung von Blutprodukten (Hämotherapie) : Neuformulierung 2003. *Dtsch Ärztebl.* (2004) Available online at: [https://www.aerzteblatt.de/archiv/40348/Richtlinien-zur-Gewinnung-von-Blut-und-Blutbestandteilen-und-zur-Anwendung-von-Blutprodukten-\(Haemotherapie\)-Neuformulierung-2003](https://www.aerzteblatt.de/archiv/40348/Richtlinien-zur-Gewinnung-von-Blut-und-Blutbestandteilen-und-zur-Anwendung-von-Blutprodukten-(Haemotherapie)-Neuformulierung-2003). (accessed June 7, 2021)
43. Franz AR, Engel C, Bassler R, Rüdiger M, Thome UH, Maier RF, et al. Effects of liberal vs restrictive transfusion thresholds on survival and neurocognitive outcomes in extremely low-birth-weight infants: the ETTNO randomized clinical trial. *JAMA.* (2020) 324:560–70. doi: 10.1001/jama.2020.10690
44. Whyte R, Kirpalani H. Low versus high haemoglobin concentration threshold for blood transfusion for preventing morbidity and mortality in very low birth weight infants. *Cochrane Database Syst Rev.* (2011) 11:1–43. doi: 10.1002/14651858.CD000512.pub2
45. Mohamed A, Shah PS. Transfusion associated necrotizing enterocolitis: a meta-analysis of observational data. *Pediatrics.* (2012) 129:529–40. doi: 10.1542/peds.2011-2872
46. Samuels N, van de Graaf RA, de Jonge RCJ, Reiss IKM, Vermeulen MJ. Risk factors for necrotizing enterocolitis in neonates: a systematic review of prognostic studies. *BMC Pediatr.* (2017) 17:105. doi: 10.1186/s12887-017-0847-3
47. Bas AY, Demirel N, Koc E, Ulubas Isik D, Hirfanoglu IM, Tunc T. TR-ROP study group. Incidence, risk factors and severity of retinopathy of prematurity in Turkey (TR-ROP study): a prospective, multicentre study in 69 neonatal intensive care units. *Br J Ophthalmol.* (2018) 102:1711–6. doi: 10.1136/bjophthalmol-2017-311789
48. Kirpalani H, Bell EF, Hintz SR, Tan S, Schmidt B, Chaudhary AS, et al. Higher or lower hemoglobin transfusion thresholds for preterm infants. *N Engl J Med.* (2020) 383:2639–51. doi: 10.1056/NEJMoa2020248
49. Keir A, Pal S, Trivella M, Lieberman L, Callum J, Shehata N, et al. Adverse effects of red blood cell transfusions in neonates: a systematic review and meta-analysis. *Transfusion.* (2016) 56:2773–80. doi: 10.1111/trf.13785
50. Juul SE, Vu PT, Comstock BA, Wadhawan R, Mayock DE, Courtney SE, et al. Effect of high-dose erythropoietin on blood transfusions in extremely low gestational age neonates: post hoc analysis of a randomized clinical trial. *JAMA Pediatr.* (2020) 174:933–43. doi: 10.1001/jamapediatrics.2020.2271

51. Lopriore E. Updates in red blood cell and platelet transfusions in preterm neonates. *Am J Perinatol.* (2019) 36:S37–40. doi: 10.1055/s-0039-1691775
52. Koenig JM, Christensen RD. The mechanism responsible for diminished neutrophil production in neonates delivered of women with pregnancy-induced hypertension. *Am J Obstet Gynecol.* (1991) 165:467–73. doi: 10.1016/0002-9378(91)90118-B
53. Haller S, Deindl P, Cassini A, Suetens C, Zingg W, Abu Sin M, et al. Neurological sequelae of healthcare-associated sepsis in very-low-birthweight infants: umbrella review and evidence-based outcome tree. *Euro Surveill Bull Eur Sur Mal Transm Eur Commun Dis Bull.* (2016) 21:30143. doi: 10.2807/1560-7917.ES.2016.21.8.30143
54. Cotten CM, Taylor S, Stoll B, Goldberg RN, Hansen NI, Sánchez PJ, et al. NICHD neonatal research network. Prolonged duration of initial empirical antibiotic treatment is associated with increased rates of necrotizing enterocolitis and death for extremely low birth weight infants. *Pediatrics.* (2009) 123:58–66. doi: 10.1542/peds.2007-3423
55. Paul DA, Leef KH, Sciscione A, Tuttle DJ, Stefano JL. Preeclampsia does not increase the risk for culture proven sepsis in very low birth weight infants. *Am J Perinatol.* (1999) 16:365–72. doi: 10.1055/s-2007-993886
56. Doron MW, Makhlof RA, Katz VL, Lawson EE, Stiles AD. Increased incidence of sepsis at birth in neutropenic infants of mothers with preeclampsia. *J Pediatr.* (1994) 125:452–8. doi: 10.1016/S0022-3476(05)83294-9
57. Marcos V, Nussbaum C, Vitkov L, Hector A, Wiedenbauer E-M, Roos D, et al. Delayed but functional neutrophil extracellular trap formation in neonates. *Blood.* (2009) 114:4908–11. doi: 10.1182/blood-2009-09-242388
58. Bartels DB, Schwab F, Geffers C, Poets CF, Gastmeier P. Nosocomial infection in small for gestational age newborns with birth weight <1500 g: a multicentre analysis. *Arch Dis Child Fetal Neonatal Ed.* (2007) 92:F449–53. doi: 10.1136/adc.2006.114504
59. Bossung V, Fortmann MI, Fusch C, Rausch T, Herting E, Swoboda I, et al. Neonatal outcome after preeclampsia and HELLP syndrome: a population-based cohort study in Germany. *Front Pediatr.* (2020) 8:579293. doi: 10.3389/fped.2020.579293
60. Jensen EA, Foglia EE, Dysart KC, Simmons RA, Aghai ZH, Cook A, et al. Adverse effects of small for gestational age differ by gestational week among very preterm infants. *Arch Dis Child Fetal Neonatal Ed.* (2019) 104:F192–8. doi: 10.1136/archdischild-2017-314171
61. Sharma P, McKay K, Rosenkrantz TS, Hussain N. Comparisons of mortality and pre-discharge respiratory outcomes in small-for-gestational-age and appropriate-for-gestational-age premature infants. *BMC Pediatr.* (2004) 4:9. doi: 10.1186/1471-2431-4-9
62. Waubert de Puiseau M, Sciesielski LK, Meyer O, Liu Z-J, Badur C-A, Schönfeld H, et al. Pooling, room temperature, and extended storage time increase the release of adult-specific biologic response modifiers in platelet concentrates: a hidden transfusion risk for neonates? *Transfusion.* (2020) 60:1828–36. doi: 10.1111/trf.15827
63. Stark A, Dammann C, Nielsen HC, Volpe MV. A pathogenic relationship of bronchopulmonary dysplasia and retinopathy of prematurity? A review of angiogenic mediators in both diseases. *Front Pediatr.* (2018) 6:125. doi: 10.3389/fped.2018.00125
64. Temming LA, Dicke JM, Stout MJ, Rampersad RM, Macones GA, Tuuli MG, et al. Early second-trimester fetal growth restriction and adverse perinatal outcomes. *Obstet Gynecol.* (2017) 130:865–9. doi: 10.1097/AOG.0000000000002209
65. Härkin P, Marttila R, Pokka T, Saarela T, Hallman M. Survival analysis of a cohort of extremely preterm infants born in Finland during 2005–2013. *J Matern Fetal Neonatal Med.* (2019) 34:2506–12. doi: 10.1080/14767058.2019.1668925

Conflict of Interest: The authors declare that the research was conducted in the absence of any commercial or financial relationships that could be construed as a potential conflict of interest.

Publisher's Note: All claims expressed in this article are solely those of the authors and do not necessarily represent those of their affiliated organizations, or those of the publisher, the editors and the reviewers. Any product that may be evaluated in this article, or claim that may be made by its manufacturer, is not guaranteed or endorsed by the publisher.

Copyright © 2021 Reibel, Dame, Bühler and Muehlbacher. This is an open-access article distributed under the terms of the Creative Commons Attribution License (CC BY). The use, distribution or reproduction in other forums is permitted, provided the original author(s) and the copyright owner(s) are credited and that the original publication in this journal is cited, in accordance with accepted academic practice. No use, distribution or reproduction is permitted which does not comply with these terms.