

Aus dem Robert Koch Institut
und dem Institut für Mikrobiologie und Tierseuchen
des Fachbereichs Veterinärmedizin
der Freien Universität Berlin

***Mycobacterium avium* subsp. *hominissuis*:**
The importance of genetic and metabolic diversity

Inaugural-Dissertation
zur Erlangung des Grades eines
PhD in Biomedical Sciences
an der
Freien Universität Berlin

vorgelegt von
Andrea Sanchini
Biologe aus Rom, Italien

Berlin 2017

Journal-Nr.: 3955

Gedruckt mit Genehmigung

des Fachbereichs Veterinärmedizin

der Freien Universität Berlin

Dekan: Univ.-Prof. Dr. Jürgen Zentek

Erster Gutachter: Prof. Dr. Lothar H. Wieler

Zweiter Gutachter: PD Dr. Soroush Sharbati

Dritter Gutachter: Univ.-Prof. Dr. Thomas Alter

Deskriptoren (nach CAB-Thesaurus): Mycobacterium avium, genetic diversity, genetic variation, expressivity, genetic analysis

Tag der Promotion: 10.07.2017

Index

Figures.....	5
List of abbreviations.....	6
1. Introduction.....	9
1.1 Introduction to Mycobacteria.....	10
1.2 Nontuberculous mycobacteria (NTM).....	12
1.2.1 Pathogenesis of NTM.....	12
1.2.2 Metabolism of NTM.....	13
1.2.3 Ecology of NTM.....	15
1.2.4 Epidemiology of NTM.....	15
1.2.5 Classification of NTM.....	16
1.3 The <i>Mycobacterium avium</i> complex (MAC).....	18
1.3.1 <i>Mycobacterium avium</i> subsp. <i>hominissuis</i> (MAH).....	19
1.3.2 The genetic diversity of MAH.....	20
1.3.3 Evolution of MAH.....	23
1.4 Genomic Island (GI).....	23
1.4.1 Genomic Islands in MAH.....	26
2. Aim and justification of the study.....	28
3. Publications.....	29
3.1 First Publications.....	29
3.2 Second Publications.....	29
4. Discussion.....	67
4.1 Implications of the hvGI for MAH.....	67
4.2 Implications of the metabolic studies on MAH.....	72
5. Conclusions and outlook.....	74
6. Summary.....	75
7. Zusammenfassung.....	76
8. References.....	78
9. List of publications.....	93
9.1 Scientific articles.....	93
9.2 Poster presentations at conferences.....	93
9.3 Scientific presentations at conferences.....	94

10. Acknowledgments	95
11. Selbstständigkeitserklärung.....	97

Figures

Figure 1. Cell wall of mycobacteria. The plasma membrane and the peptidoglycan (PG) have the same composition as in other bacteria. However, the layer of PG is thinner in mycobacteria than in other Gram-positive bacteria. The PG is connected to arabinogalactan (AG), a heteropolysaccharide. The mycomembrane is the specific part of the mycobacterial cell wall and is composed of glycolipids (GL), phospholipids (PL) and several mycolic acids such as trehalose monomycolates (TMM) and trehalose dimycolates (TDM, also known as cordal factor). The structure of the long-chain fatty acid TDM is shown. The outer layer is composed by glucans, proteins and other lipids. Source (Marrakchi et al. 2014).

Figure 2. Phylogenetic analysis of the most frequent NTM species based on the sequence of the 16S rRNA gene. Adapted from (Tortoli 2014).

Figure 3. Typical structure of a genomic island (GI). Typically GIs are characterized by flanking tRNA genes. The presence of an own integrase gene (*int*) is responsible for the GI mobility. GIs are flanked by DNA direct repeats (DR). They are characterized by the presence of Insertion sequences (IS) and other genes that might be integrated during the GI evolution. Source (Dobrindt et al. 2004).

List of abbreviations

AIDS: Acquired immunodeficiency syndrome

AG: Arabinogalactan

CF: cystic fibrosis

CRISPR: Clustered regularly interspaced short palindromic repeats

DNA: Deoxyribonucleic acid

DR: Direct repeat

GI: Genomic Island

GL: Glycolipids

IS: Insertion sequence

ITS: Internal transcribed spacer

HAART: Highly active antiretroviral therapy

HIV: Human immunodeficiency virus

HGT: Horizontal gene transfer

hvGI: Hypervariable genomic island

LSP: Large sequence polymorphisms

MAA: *Mycobacterium avium* subsp. *avium*

MAC: *Mycobacterium avium* complex

MAH: *Mycobacterium avium* subsp. *hominissuis*

MAP: *Mycobacterium avium* subsp. *paratuberculosis*

MAS: *Mycobacterium avium* subsp. *silvaticum*

MCE: mammalian cell entry

MIC: Minimal inhibitory concentrations

MIRU-VNTR: Mycobacterial interspersed repetitive units variable number of tandem repeat

MmpL: Mycobacterial membrane protein Large

mRNA: Messenger ribonucleic acid

MTB: *Mycobacterium tuberculosis*

MTBC: *Mycobacterium tuberculosis* complex

NTM: Nontuberculous mycobacteria

ORF: Open reading frame

PCR: Polymerase chain reaction

PG: Peptidoglycan

PL: Phospholipids

PM: Phenotype microarray

qPCR: quantitative polymerase chain reaction

rDNA: Ribosomal deoxyribonucleic acid

RFLP: Restriction fragment length polymorphism

RGM: Rapid growing mycobacteria

RNA: Ribonucleic acid

rRNA: Ribosomal ribonucleic acid

SGM: Slow growing mycobacteria

SNP: Single nucleotide polymorphisms

TB: Tuberculosis

TDM: Trehalose dimycolates

TMM: Trehalose monomycolates

tRNA: Transfer ribonucleic acid

WGS: Whole genome sequencing

WHO: World Health Organization

1. Introduction

Substantial progresses have been made in the prevention and control of infectious diseases in the last decades. However, the World Health Organization (WHO) estimates that in 2010 about 15 millions of people still died because of infectious diseases (Dye 2014). In low-income countries there has been a decrease in the mortality and morbidity due to infectious diseases, but diseases such as diarrhoea, pneumonia, Human Immunodeficiency Virus (HIV), Tuberculosis (TB) and Malaria are still the leading causes of deaths (Lozano et al. 2012; Murray et al. 2014). Several recent environmental and behavioural changes affect the distribution of infectious diseases. Globalization increases the opportunities for pathogens to spread from one continent to another (2006; Gushulak & MacPherson 2004). Since the Industrial Revolution more people are living in urbanized areas in more dense conditions, allowing pathogens to better spread among the populations (Neiderud 2015). The climate changes led to the rise of temperatures and to changing rainfall distribution patterns, affecting vector-borne and water-borne infectious diseases (Hasnain et al. 2012; Shuman 2010). Another factor is the increase of the antibiotic-resistance in bacteria, which complicates the therapeutic options for the treatment of bacterial diseases (Fair & Tor 2014; Ventola 2015a; Ventola 2015b). For all these reasons, efforts and resources in fighting infectious diseases must be reinforced.

Knowledge on bacterial genetic characteristics and pathogenicity mechanisms is crucial to understand how bacteria evolved, how they spread in the population and what their pathogenic potential is. In the last years there has been an increase of information regarding genetic characteristics of bacteria due to the technology of Whole genome sequencing (WGS) (Land et al. 2015). Subsequently, comparative genomics allows to understand genetic variability and to identify the most adapted bacterial strains in epidemiological settings, such as the successful “Beijing clone” of *Mycobacterium tuberculosis* (MTB) (Ramazanzadeh & Sayhemiri 2014). We live now in a genomic era: the availability of deoxyribonucleic acid (DNA) sequence information of numerous bacterial species allows to discover the fundamental basis of pathogenicity and to discover new approaches to fight infectious diseases (Guttmacher & Collins 2003; Yang et al. 2008).

1.1 Introduction to Mycobacteria

The genus *Mycobacterium* belongs to the *Actinobacteria* phylum and to the *Mycobacteriaceae* family. These bacteria are classified as Gram-positive, they have a rod-shaped morphology, are non-motile and aerobic (Ventura et al. 2007). A special feature of mycobacteria is that they have a thick and hydrophobic cell wall compared to other bacteria, which is rich in long-chained fatty acids called mycolic acids (Fig. 1) (Kaneda et al. 1986; Marrakchi et al. 2014; Nataraj et al. 2015; Zuber et al. 2008). This thick cell wall makes mycobacteria acid-fast, meaning that during staining methods (e.g. Ziehl-Neelsen staining) they resist to acid de-colorization (Van Deun et al. 2008). Moreover, mycobacteria are usually difficult to treat because the thick cell wall makes them resistant to antibiotics (Jarlier & Nikaido 1994; Lambert 2002). Consequently the anti-mycobacterial therapy requires multiple antibiotics for a long time-period. This leads to high cost and high probability to develop antibiotic side effect and patients' in-adherence to treatment regimens (Kasperbauer & De Groote 2015; Philley & Griffith 2015). The hydrophobic cell wall contributes also to biofilm formation, adherence to surfaces, impermeability and slow growth of mycobacteria (Brennan & Nikaido 1995; Hoffmann et al. 2008). Another distinct feature of mycobacteria is their high GC content of their DNA (Levy-Frebault & Portaels 1992).

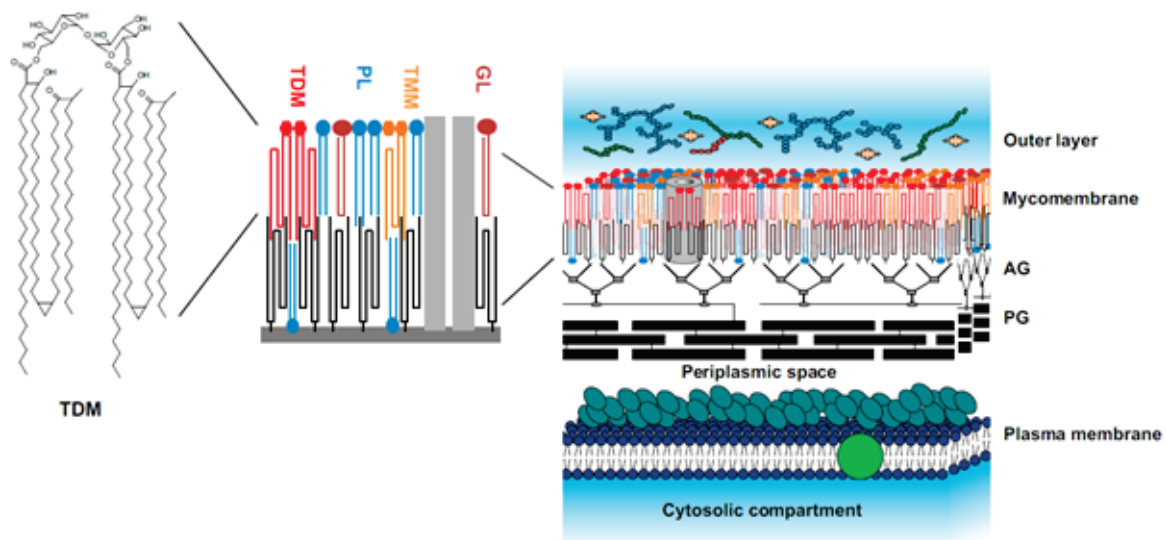


Figure 4. Cell wall of mycobacteria. The plasma membrane and the peptidoglycan (PG) have the same composition as in other bacteria. However, the layer of PG is thinner in mycobacteria than in other Gram-positive bacteria. The PG is connected to arabinogalactan (AG), a heteropolysaccharide. The mycomembrane is the specific part of the mycobacterial cell wall and is composed of glycolipids (GL), phospholipids (PL) and several mycolic acids such as trehalose monomycolates (TMM) and trehalose dimycolates (TDM, also known as cordal factor). The structure of the long-chain fatty acid TDM is shown. The outer layer is composed by glucans, proteins and other lipids. Source (Marrakchi et al. 2014).

There are three groups of mycobacteria: the *Mycobacterium tuberculosis* complex (MTBC), *Mycobacterium leprae* and the group of nontuberculous mycobacteria (NTM). Species belonging to the MTBC, including the MTB discovered by Robert Koch in 1882, cause TB in humans (Grange 1982); it is estimated that each year there are 9 million of new active TB cases and 1,5 millions of deaths (Lonnroth et al. 2015). In addition, it has been estimated that there are every year about 500.000 cases of infections caused by multi-drug resistant (MDR) TB cases, complicating the treatment (Pontali et al. 2013). *M. leprae* causes leprosy, a human disease characterized by the loss of the sensitization to pain and consequently the loss of anatomical parts of the body because of repeated injuries. In 2011 *M. leprae* caused about 220.000 leprosy cases in the world (2012; Lastoria & Abreu 2014). The third group of mycobacteria is represented by the NTM.

1.2 Nontuberculous mycobacteria (NTM)

The group of NTM is the largest and the more heterogeneous among the mycobacteria: more than 150 different species have been described (Tortoli 2014).

1.2.1 Pathogenesis of NTM

NTM are opportunistic pathogens able to cause infections in immune-compromised humans (Tortoli 2014). They are responsible for pulmonary infections, lymphadenitis, soft-tissue infections, bone-joint infections and disseminated infections. In rare cases, NTM cause infections also in immunocompetent humans (Breda et al. 2009; Fowler & Mahlen 2014; Piersimoni & Scarparo 2009).

Humans can acquire NTM infections in different ways. The first and presumably most common transmission route is via aerosol; humans inhale droplets containing NTM, the small droplets enter the alveoli and humans might develop pulmonary NTM disease (Falkinham 2009; Falkinham et al. 2008; Parker et al. 1983). NTM and especially *Mycobacterium abscessus* have been increasingly isolated from patients with cystic fibrosis (CF), where they damage the lung and represent a risk for lung transplantation (Esther et al. 2010; Orens et al. 2006).

Another route of infection is via direct contact with contaminated water, soil or dust that is common sources of NTM (see chapter 1.2.3). This way of transmission is particularly common in children, since often they bring hands and objects to their mouth while exploring the environment (Tortoli 2009). This transmission route might be responsible for the lymphadenitis, which indeed are common among young children (Hazra et al. 1999). Following to NTM infections, the lymph nodes become enlarged and inflammation processes occur (Perdikogianni & Galanakis 2014). The direct contact with NTM may also cause cutis and soft tissue infections of hands, knees or feet. The most common clinical manifestation in these infections is the formation of granulomas (Tortoli 2009). Regarding bone and joint infections, a NTM transmission typically occurs via traumatic wounds or after surgical intervention (Brown et al. 1999; Tortoli 2009). Disseminated infections can occur in patients

with strong immuno-deficiency such as HIV-infected patients (Inderlied et al. 1993; Tortoli 2009). Such patients might acquire the NTM infection via the gastro-intestinal tract or the respiratory tract. Previous studies showed that NTM affected approximately 50% of the Acquired Immune Deficiency Syndrome (AIDS) patients with a CD4 count less than 100 / μ l (Inderlied et al. 1993). However, with the development of the highly active antiretroviral therapy (HAART) for AIDS patients, it is possible to keep the level of CD4 above 100 / μ l and therefore the proportion of disseminated NTM diseases in these cases decreased (Karakousis et al. 2004).

1.2.2 Metabolism of NTM

Environmental NTM can survive in a wide range of environments, such as water, soil or dust. On the other hand clinical NTM are human intracellular pathogens, therefore they must adapt to life within human macrophages. Once internalized by human macrophages, NTM can inhibit the phagosome maturation allowing for bacterial survival. In all these conditions (environmental or clinical lifestyle) NTM survive and persist in various stress conditions such as lack or scarceness of nutrients (for example in water), anoxia (low oxygen level) or acid environment (low pH), which are characteristics of the environment in macrophages. Consequently, NTM must regulate gene expression and metabolism in order to persist and survive. They switch their metabolic activities depending on the stress conditions (Archuleta et al. 2005). In bacteria there are several strategies to survive in stress conditions: accumulation of storage compounds such as glycogen, formation of spores and metabolic dormancy. The latter is the strategies that NTM use to survive in nutrient-depletion conditions. Studies on *Mycobacterium avium* complex (MAC) showed that bacteria in starving conditions first undergo regulatory and physiological changes to adapt to the new conditions. Second, the MAC enters in a persistence phase, which is characterized by the shutdown of the general metabolism, which permits the survival in absence of nutrients (Archuleta et al. 2005). Characteristics of this metabolic shutdown are: usage of internal reserve of lipids, alterations of mycolic acids synthesis and therefore rearrangement of the cell wall, reduction in catalase and urease activities, reduction of the messenger ribonucleic acid

(mRNA) activity (only essential genes are transcribed), and antibiotic tolerance. The rearrangement of the cell wall is responsible for a reduced permeability of the cell wall, leading to a more protected state of the bacteria (Archuleta et al. 2005; Liu et al. 1996; Yuan et al. 1998). The metabolic shutdown during the persistence phase is an adaptation of NTM to stress conditions such as starvation, low pH or low oxygen. Other bacteria also show persistence mechanisms, such as species of the genus *Vibrio* or *Streptococcus* (Armada et al. 2003; Curras et al. 2002).

At genetic level, several genes are regulated to permit persistence of NTM in stress conditions: for example genes encoding for respiratory enzymes or for enzymes involved in the fatty acids metabolism (Honer zu Bentrop & Russell 2001). The genes encoding enzymes involved in fatty acids metabolism are of particular relevance. It has been shown that members of NTM possess higher numbers and multiple copies of genes encoding enzymes involved in metabolism of lipids and fatty acids, when compared to other mycobacteria such as MTB or *M. leprae*. This redundancy suggests that NTM are capable to generate a greater diversity of lipids and fatty acids for the cell wall compared to other mycobacteria (Li et al. 2005a; Marri et al. 2006; Trivedi et al. 2004). The cell wall plays a key role in the host-pathogen interaction, since it constitutes the interface and the first point of contact. Therefore, variations in the composition of proteins but especially of lipids in the cell wall might reflect differences in adaptation to survival in the environment or in humans (Marri et al. 2006).

More information is available on the utilization of metabolic substrates by MTB than by NTM. Apart from lipids and fatty acids that are used as major carbon sources, mycobacteria metabolize amino acids as source of nitrogen, such as asparagine, glutamate and aspartate (Cook et al. 2009). They can also assimilate ammonium, if no other nitrogen source is present. In order to decide which nutrient to take, NTM must have a sensor system able to detect nutrients, as shown for MTB (Cook et al. 2009). The major source of phosphate for mycobacteria is inorganic phosphate: in MTB the *pstS1* and *pstS2* genes regulating phosphate uptake were associated with virulence: indeed, in a model of mouse infection, mutants with deleted *pstS1* and *pstS2* genes showed reduced virulence when compared with the wild type

strains (Peirs et al. 2005). The sulphate assimilation depends also on a regulatory system able to detect lack of sulphate resulting in the activation of sulphate uptake (Cook et al. 2009).

1.2.3 Ecology of NTM

NTM are widely distributed in the environment, they can form biofilm and adhere in different types of surfaces (Faria et al. 2015; Sousa et al. 2015). So far NTM have been isolated from dust, soil, plants and natural water sources such as streams or rivers. In addition, NTM have been isolated also from drinking water distribution systems such as household plumbing or aerosols and hospital water systems (Dailoux et al. 2003; Falkinham 2009; Falkinham et al. 2001; Lahiri et al. 2014a; Le Dantec et al. 2002; Whittington et al. 2004). The colonization of drinking-water distribution systems brings NTM very easily in contact with humans (Tortoli 2014). Why can NTM survive in many different environmental conditions? The following properties make this possible: the hydrophobicity and impermeability of their cell wall, their tolerance to an acid environment and to high temperature and their oligotrophy, allowing them to survive in an environment with low level of nutrients, where most of other bacteria cannot survive (Norton et al. 2004).

1.2.4 Epidemiology of NTM

In the recent years the incidences of infections caused by NTM are increasing in many areas of the world such as Germany (Ringshausen et al. 2016), US (Adjemian et al. 2012), Japan (Morimoto et al. 2014), Ontario (Canada) (Marras et al. 2013), UK (Moore et al. 2010), the Netherlands (van Ingen et al. 2009), Italy (Rindi & Garzelli 2016) and Queensland (Australia) (Thomson et al. 2010). For example in Germany the prevalence of pulmonary NTM infections increased from 2.3 to 3.3 cases/100.000 population during the period 2009-2014. This increase might be due partly to the increased awareness regarding NTM, and partly to the improvement of NTM isolation and identification techniques. In addition, it needs to be considered that in countries with high TB incidences, NTM infections are often neglected (Gopinath & Singh 2010). However, also in countries where the NTM infections are a

reportable disease, an increase in the incidences of NTM-infections has been observed, as for example in Oregon State in the US and in the Queensland state in Australia (Adjemian et al. 2012; Thomson et al. 2010). The epidemiology of NTM became even more interesting because of two recent NTM outbreaks occurring in humans. The first report is from Bryant and colleagues: they analyzed by WGS all *M. abscessus* isolates from patients with CF attending the same clinic between the years 2007 and the 2011 in the UK. They identified two prolonged outbreaks caused by an almost identical *M. abscessus* isolate in 11 patients (Bryant et al. 2013). This study suggested a possible human-to-human transmission of NTM species between CF patients, while in previous studies the issue of person-to-person transmission was never proved (Harris et al. 2012; Huang et al. 2010; Olivier et al. 2003; Sermet-Gaudelus et al. 2003).

The second report of an outbreak caused by NTM is from Haller and colleagues. They reported five cases of *Mycobacterium chimaera* disseminated infections in five patients previously undergoing open chest surgery in Germany between April 2015 and February 2016. The epidemiological, environmental and molecular investigations suggested that *M. chimaera* infections have been caused by the exposure of patients to a contaminated heater-cooler unit (Haller et al. 2016).

The assumed increase of NTM infections, the capacity to cause outbreaks, the variety of clinical pictures, the potential and unknown nature of human-to-human transmission and their spread in the environment make NTM an emerging public health problem that need to be further investigated.

1.2.5 Classification of NTM

The NTM can be divided in two further groups based on their rapidity to grow: rapid growing mycobacteria (RGM) form visible colonies in agar plates within 3-7 days, while slow growing mycobacteria (SGM) require more than 7 days to form visible colonies in agar plates (Kim et al. 2013). Genetically those two groups are clearly distinguished, based on the phylogenetic analysis of their 16S ribosomal RNA (rRNA) gene sequences (Fig. 2).

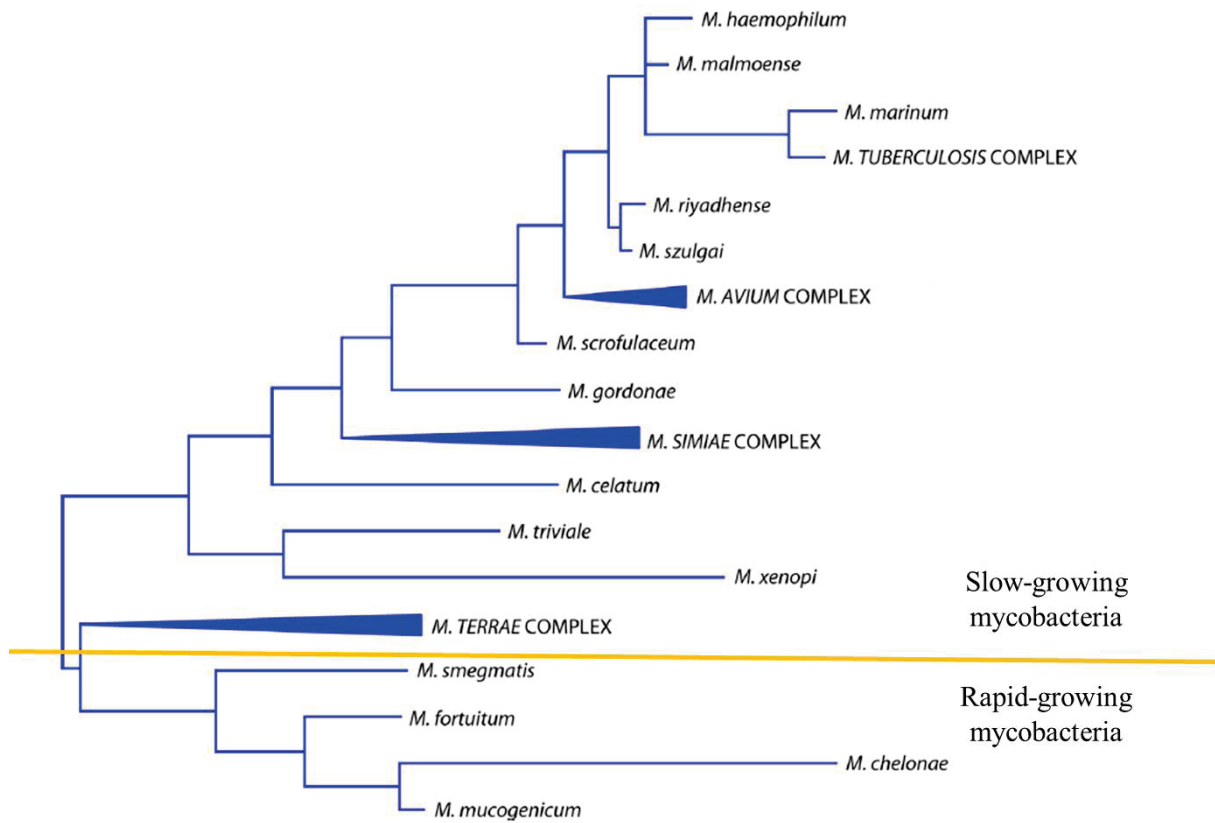


Figure 5. Phylogenetic analysis of the most frequent NTM species based on the sequence of the 16S rRNA gene. Adapted from (Tortoli 2014).

Among the RGM the species most frequently responsible for human infection are *Mycobacterium chelonae*, *Mycobacterium fortuitum* and *M. abscessus*. While among the SGM the species most frequently responsible for human infection are *Mycobacterium xenopi*, *Mycobacterium kansasii*, *Mycobacterium gordonae* and the species belonging to the MAC. The MAC is the clinically most relevant NTM for humans (Hoefsloot et al. 2013; Tortoli 2014).

1.3 The *Mycobacterium avium* complex (MAC)

Until the beginning of the 1990s only two major species were included in the MAC; *M. avium* and *Mycobacterium intracellulare* (Inderlied et al. 1993; Wayne et al. 1991). With the availability of more advanced molecular and phenotypic tests it became clear that within the MAC there was more diversity; additional species and sub-species were identified, with different pathogenicity and host specificity. Today the MAC includes 11 species: *M. chimaera*, *Mycobacterium indicus pranii*, *M. intracellulare*, *Mycobacterium arosiense*, *M. avium*, *Mycobacterium vulneris*, *Mycobacterium bouchedurhonense*, *Mycobacterium colombiense*, *Mycobacterium marseillense*, *Mycobacterium yongonense* and *Mycobacterium timonense*. Within the MAC, *M. avium* is the most frequently isolated from human or animal infections (Rindi & Garzelli 2014; Tortoli 2014). *M. avium* is further divided in four subspecies that show differences in lifestyle, ranging from environmental bacteria that are opportunistic pathogen for humans to animal pathogens (Rue-Albrecht et al. 2014). *Mycobacterium avium* subsp. *paratuberculosis* (MAP), is responsible for paratuberculosis (also known as Johne's Diseases) mostly in ruminants (Windsor 2015). However, MAP infections have been reported also in animals in closer contact to humans such as pigs, dogs or cats and also in other primates such as macaques or gibbons (Singh et al. 2011; Stevenson et al. 2009). The infections are chronic and characterized by the presence of a granuloma in the intestine of the animal and the outcome of those infections may be fatal (Naser et al. 2014). MAP is one of the slowest growing mycobacteria: it takes up to one month or more to see colonies in an agar plate. This slowness makes the diagnosis and etiological confirmation of MAP disease challenging (Turenne et al. 2007; Whittington et al. 1999). MAP-infected animals shed the bacteria in the faeces, and other animals acquire the infection via MAP-contaminated water or milk (Koets et al. 2015; Rindi & Garzelli 2014). Regarding infections in humans, it has been suggested that MAP is the etiological agent of the Crohn's disease, a chronic disease of the bowel. However, this issue is controversially discussed (Davis 2015; Sechi & Dow 2015). The second subspecies is *Mycobacterium avium* subsp. *avium* (MAA). MAA is responsible for TB in birds (Turenne et al. 2007). Occasionally MAA has been isolated from other animals such as pigs or cattle (Rindi & Garzelli 2014). The transmission of MAA from infected birds to other animals occurs via the faecal-oral route (Schrenzel et al.

2008; Shitaye et al. 2008). Reports of MAA infections in humans are rare (Thegerstrom et al. 2005). The third subspecies is *Mycobacterium avium* subsp. *silvaticum* (MAS). MAS is known to cause TB-like lesions in wood pigeons (Thorel et al. 1990). Rarely MAS has been isolated in other animals such as horses (Chiers et al. 2012). The fourth subspecies is the *Mycobacterium avium* subsp. *hominissuis* (MAH).

1.3.1 *Mycobacterium avium* subsp. *hominissuis* (MAH)

MAH is the clinically most important MAC and one of the clinically most important species among all the NTM (Hoefsloot et al. 2013; Kolb et al. 2014; Tran & Han 2014). In humans MAH isolates are responsible for lymphadenitis in children, pulmonary infections and disseminated infections in adults with immune-suppression. With the increase of the number of immune-compromised humans due to ageing of the population and better treatment of patients with underlying risk factors, the public health relevance of MAH infections increased (Falkinham 2013; Hoefsloot et al. 2013). Although rarely, MAH have been isolated from domestic animals such cats, dogs, deer, pigs, or horses (Rindi & Garzelli 2014). Along with its pathogenic lifestyle, MAH has also been isolated from different environmental sources: water, soil or dust (Falkinham 2013; Kolb et al. 2014; Lahiri et al. 2014a; Rindi & Garzelli 2014). The spread of MAH in the environment suggests that humans can acquire the infection by environmental exposure, especially through contaminated water or soil (Alvarez et al. 2008; De Groote et al. 2006; Falkinham 2010).

MAH is a relatively new proposed subspecies of *M. avium*: in 2002 Mijs and co-authors proposed the MAH nomenclature in order to differentiate the *M. avium* infecting birds (later re-defined as MAA and MAS) from the *M. avium* infecting humans (MAH) (Mijs et al. 2002). Along with this host difference, MAH is differentiated from the other subspecies also by its capacity to grow at temperatures from 24 to 45°C. With the use of molecular genotyping methods, such as restriction fragment length polymorphism (RFLP) of multiple insertion sequences (IS) and genome sequencing, it became clear that MAH has distinct genetic features when compared to the other *M. avium* subspecies. In particular, MAH can be

identified and differentiated from the other *M. avium* subspecies by the presence of multiple copies of the IS1245, by the sequence of the 16S-23S rDNA Internal transcribed spacer (ITS) and by the absence of IS901 which is on the contrary found in the subspecies MAA and MAS. The IS900 is a specific marker of the subspecies MAP. In addition, the amplification of the IS1311 is a specific marker of all the *M. avium* subspecies, and can distinguish them from the *M. intracellulare* (Rindi & Garzelli 2014).

1.3.2 The genetic diversity of MAH

The genomic variability and plasticity is an expression of the bacterial adaptation to different environmental conditions: gene duplications, gene loss, horizontal gene transfer (HGT) and gene regulation are all manifestations of adaptation (Vicente & Mingorance 2008). With the advance in molecular genotyping methods, the field of comparative genomics greatly expanded. This expansion allowed researchers to better understand the epidemiology and distribution of a specific bacterial strain, biotype, serotype etc. In addition, the recent advances in molecular methods permitted to better discriminate between species and strains determining an improvement in diagnostic accuracy and identification procedures (Franca et al. 2013).

Regarding *M. avium*, specific genetic differences have been identified between isolates apparently similar but occupying difference niches or different hosts. In particular, the MAH has been found to be more genetically diverse than the other *M. avium* subspecies (Ignatov et al. 2012; Rindi & Garzelli 2014; Semret et al. 2004; Turenne et al. 2008; Turenne et al. 2007; Wu et al. 2006). The sources of genetic variability of MAH are multiple: single nucleotide polymorphisms (SNP), large sequence polymorphisms (LSP), minisatellites sequences and presence of phages, plasmids and other mobile genetic elements. SNPs are a very common source of genetic diversity in *M. avium*. Turenne and co-authors in 2008 performed multi-locus sequence analysis of 10 housekeeping genes corresponding to 8064 bp with 56 strains of *M. avium* (MAH n= 24, MAP n= 21, MAA n=8 and MAS n=3). They found a total of 205 SNPs, and the great majority of these SNPs has been identified in the MAH subspecies

(Turenne et al. 2008). In addition, recombination events among the different alleles of the housekeeping genes also occurred, in contrast to the other *M. avium* subspecies analyzed that showed no evidence of allele recombination.

Another interesting gene that has been subjected to SNP studies with the purpose of differentiating the *M. avium* subspecies is the *hsp65* housekeeping gene. It encodes for the heat shock protein of 65 kDa (Slany & Pavlik 2012). In 2006 Turenne and co-authors showed that a variable region of the *hsp65* gene located at the 3' extremity has enough discriminatory power to differentiate between all the *M. avium* subspecies and also *M. intracellulare* included in the MAC. They obtained distinct *hsp65* SNP profiles corresponding to each subspecies, and once again the MAH subspecies was the one with the highest number of different *hsp65* profiles identified (Turenne et al. 2006).

Another source of genetic diversity that has been investigated in *M. avium* isolates are LSP. Differently to the SNPs that represent polymorphisms in a single nucleic acid position, the LSPs are larger regions of sequence polymorphisms that are due to events of insertion or deletion of genetic material or horizontal gene transfer (Alland et al. 2007; Brosch et al. 2001). The identification of LSPs became possible when WGS data were available. The first *M. avium* that was fully sequenced was the *M. avium* 104 (later re-defined as belonging to the MAH subspecies) in the 1980s. This strain was isolated from the blood of an AIDS patient with disseminated infection in the United States (Horan et al. 2006). Its genome size is 5.48 MB and it encodes for 5313 Open reading frames (ORF)s. Semret and co-authors in 2004 published the first comparative genomic studies with several *M. avium* subspecies, by using whole genome DNA microarray (then confirmed by Polymerase chain reaction (PCR) and sequencing) with the strains MAH 104, MAP K10, MAP Ln20 and MAS 49884. The comparison of DNA microarrays revealed that 14 LSPs were present in the MAH 104, and not in the other subspecies. The range of these 14 LSPs was from 21 to 197 kb, including altogether 527 genes for a total of 727 kb. The genes involved in metabolism represented almost 40% of all genes contained in the LSPs. These 14 LSPs altogether represent 13,5 % of the WGS of MAH 104 (Semret et al. 2004). Therefore, within the species *M. avium*, MAH showed the highest degree of genetic diversity. Another more recent study used a similar

approach but has a more sensitive definition of LSP compared to the first study; the authors considered at least three consecutive ORFs to be present in a LSP. A total of 24 LSPs were identified in MAH isolates that were absent in the other *M. avium* subspecies. Within the 24 LSPs also the previously identified 14 LSPs were included. The size range of these 24 LSPs was from 3 to 196 kb for a total of 846 kb, accounting for 17% of the WGS of the MAH 104 (Wu et al. 2006).

Another genetic element characteristic of mycobacteria and specifically of the *M. avium* genomes is the presence of repetitive sequences. They are called minisatellites, and are tandem repeats of a length of 10-100 nucleotides spread in several parts of the mycobacterial genome. The number and the variability of these repetitive sequences are used for molecular typing purposes by the Mycobacterial interspersed repetitive units variable number of tandem repeat (MIRU-VNTR) approach (Mears et al. 2015). The MIRU-VNTR typing method has high discriminatory power and allows for epidemiological and comparative genomics studies within MAH isolates from different sources (Inagaki et al. 2009; Radomski et al. 2010). Several studies using the MIRU-VNTR typing methods on MAH isolates revealed that human and pig MAH isolates shared similar MIRU-VNTR profiles, highlighting a possible source of transmission for human infection or common environmental source of infection (Iwamoto et al. 2012; Rindi et al. 2013; Tirkkonen et al. 2010).

In 2013 another MAH strain has been fully sequenced, and thus serves as second reference strain. The MAH TH135 strain has been isolated from the sputum of an AIDS-negative patient with pulmonary infection in Japan. Comparative genomic analysis with the other reference strain MAH 104 revealed that the genome of the TH135 strain is smaller (4.96 Mb) than the genome from MAH 104 (5.48 Mb) and encodes for 4636 ORFs. A total of 4012 genes are shared by the two reference strains, and 624 and 1108 genes are unique for the TH135 and for the MAH 104 strain, respectively. This highlighted a certain degree of diversity between the two strains, which have been isolated from different diseases and countries as well. This diversity suggests that pulmonary (MAH TH135) and disseminated (MAH 104) strains might have acquired different genes during evolution, resulting in different pathogenesis characteristics. The GC content of the two strains is almost the same

(69.3 % for the MAH TH135 and 69.0 % for the MAH 104 strain) and they have the same numbers of transfer RNA (tRNA) genes ($n = 46$). Interestingly, the MAH 104 strain possesses four time more IS elements than the MAH TH135 (129 vs. 30), suggesting that the genome of MAH 104 underwent more genetic re-arrangements and recombination events (Uchiya et al. 2013). The availability of more WGS of MAH isolates from different sources and countries might clarify the genetic relations among isolates and the possible routes of infections for humans.

1.3.3 Evolution of MAH

By analyzing the results of the above mentioned comparative genomic studies, it was possible to hypothesize the evolutionary history of MAH within the species *M. avium*. Especially the studies focusing on SNPs and LSP permitted to understand the evolution of MAH. The higher SNPs variation and recombination events in MAH permitted to this subspecies access to a wider range of environmental conditions (Rindi & Garzelli 2014). Two major lineages evolved from the MAH, with different and more restricted host-specificity compared to the MAH: one lineage corresponding to the MAP subspecies and the other lineage including both MAA and MAS subspecies. A phylogenetic analysis of the SNPs of ten housekeeping genes by Turenne and co-authors revealed that the rates of nonsynonymous (dN) to synonymous (dS) substitutions was higher for MAP (0,67) and for MAS and MAA (0,50) when compared to the dN / dS ratio of MAH (0,08). A higher dN/dS ratio indicates positive selection of nucleotide substitutions from a common ancestor with a lower dN/dS ratio. This suggests that the MAP, MAA and MAS evolved more recently from a common MAH ancestor (Jeffares et al. 2015; Mugal et al. 2014; Turenne et al. 2008).

1.4 Genomic Island (GI)

The increasing number of available bacterial genome sequences expanded our understanding on genome and bacterial evolution. Research on genetics revealed that genetic events such as gene acquisition via HGT, gene loss and gene mutations contribute to pathogenicity, host-

specificity and adaptation of bacteria to different conditions (Doolittle 2002; Treangen & Rocha 2011). The acquisition of new genetic elements via HGT, in forms of plasmids, phages or Genomic Islands (GI)s, is a mechanisms found especially in extracellular bacteria: they use the new information acquired to adapt to a new lifestyle. The part of the genome acquired by HGT is called “accessory genome”, because it is distinct from the “core genome”, which represents the part of the genome essential for bacterial survival. On the contrary the loss of genes is a typical feature of intracellular pathogens, because in this lifestyle they use the cellular resources of the host to compensate the loss of genetic material. Mutations are responsible for the development of new gene variants, which may confer evolutionary advantages (Dobrindt et al. 2004).

Pathogenicity islands are mobile genetic elements that carry virulence genes and thus confer pathogenic potential to the recipient. For example, a pathogenicity island might carry genes encoding for bacterial toxins, for adherence factors facilitating host-cell invasion, for capsule biosynthesis which avoid phagocytosis or for siderophores allowing for a better up-take of ions necessary for the bacteria during infection (Boyd & Brussow 2002; Shankar et al. 2002).

GIs are also part of the accessory genome of a microorganism. They are mobile genetic elements (ranging from 3 to more than 200 kb) integrated in the chromosome that have been acquired via HGT (Sanchini et al. 2016). A mechanism has been proposed to explain the GI evolution. A GI might evolve from other mobile genetic elements, such as plasmids, that integrated in the chromosome by recombination. Subsequently these genetic elements lost genes essential for their mobility and for their capacity for autonomous replication and therefore became GIs integrated in the chromosome. These GIs continue to evolve by the acquisition of additional DNA elements such as transposons or IS. Each functional GI possesses an own integrase gene (*int*) which is responsible for the GI excision from the chromosome, thus allowing the transfer of the GI to other bacteria via HGT and re-integration in another chromosome (Ahmed et al. 2008; Dobrindt et al. 2004). Structurally, GIs are characterized by a different GC content when compared to the GC content of the whole genome, indicating that they derive from another microorganism (Blanc-Potard & Lafay 2003). In addition, GIs are associated with flanking tRNA genes, and usually are flanked by

DNA direct repeats (DR), indicating insertional events (Bellanger et al. 2014). GIs often contain other mobility genes responsible for the mobility of the GI (Fig. 3) (Che et al. 2014; Langille et al. 2010).

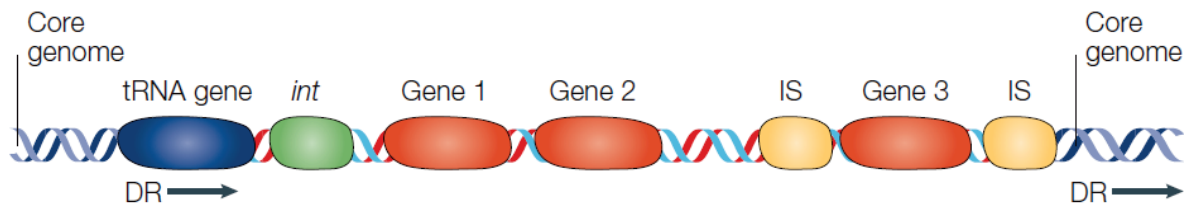


Figure 6. Typical structure of a genomic island (GI). Typically GIs are characterized by flanking tRNA genes. The presence of an own integrase gene (*int*) is responsible for the GI mobility. GIs are flanked by DNA direct repeats (DR). They are characterized by the presence of Insertion sequences (IS) and other genes that might be integrated during the GI evolution. Source (Dobrindt et al. 2004).

GIs might influence different aspects of the bacterial lifestyle, depending on the specific conditions; they might influence antibiotic-resistance, adaptation to the environment, the fitness of the bacteria, or have a role in a specific metabolic pathway. Therefore, GIs play a pivotal role in bacterial evolution (Ahmed et al. 2008; Che et al. 2014; Juhas et al. 2009). Here we report few examples of GIs that are crucial for bacterial evolution. In *Escherichia coli* the enterocyte effacement GI permitted the evolution from a commensal clone to a specific enterohaemorrhagic *E. coli* pathotype (Franzin & Sircili 2015). Moreover, GIs can shuffle resistance genes between different species or between clinical and environmental settings, leading to the formation of multi-antibiotic-resistance hospital microorganisms (Fricke et al. 2008; Juhas et al. 2009). For example, the “SCC*mec*” GI in *Staphylococcus aureus* is responsible for the resistance against methicillin, a crucial antibiotic against *S. aureus* (Ito et al. 2014). Another example is the SGI1 that carries multiple antibiotic-resistance genes in *Salmonella enterica* and *Proteus mirabilis* (Lei et al. 2014). In *Pseudomonas aeruginosa*, the GI1 and GI2 are responsible for the multi-antibiotic resistance phenotype (Roy Chowdhury et al. 2016).

1.4.1 Genomic Islands in MAH

In MAH, researchers described a 3.5 kb GI which is responsible for the mycobacterial invasion of macrophages and amoeba in the reference strain MAH 104. Indeed, a mutant lacking this GI lost the ability to invade human macrophages and *Acanthamoeba castellanii* cells (Danelishvili et al. 2007).

In 2014, Lahiri and co-authors compared different WGS of MAC in order to identify the accessory genome of these species. Precisely the WGS of the MAH 104, the MAP K10, the MAA ATCC 25291 and the *M. intracellulare* ATCC 13950 strains have been analyzed. The comparison of these WGS revealed the presence of seven genome regions (sizes 22.85-199.29 kb) that were specific for the MAH 104, and not found in the other species or subspecies (Lahiri et al. 2014b). Three out of the seven regions specific of the MAH 104 were flanked by tRNAs which is one indication of plausible presence of a GI (Che et al. 2014; Langille et al. 2010). Two of these 3 regions did not contain any DNA direct repeats whereas the region 3 contained two DNA direct repeats at the extremities. In addition, region 3 had a drop in the GC content when compared to the GC content of the rest of the MAH 104 genome (66.8 % vs. 69.0 %). The region 3 contained 63 genes, among which genes responsible for mobility such as transposons, integrases and phagic genes indicating HGT. Therefore, the region 3 identified in MAH 104 was classified as a new GI. This GI in the MAH 104 strain is integrated between the methyltransferase (MAV_0778) and the carveol dehydrogenase genes (MAV_0846). The GI shares 53% homology with the genome of *M. xenopi* RIVM700367. We later searched for this GI in four other MAH genomes that were available at that time in the Genbank (strain MAH TH135, MAH 10-4249 isolated from a deer in the United States and two MAH isolated from Germany, the MAH 27-1 from dust and the MAH 2721 isolated from a child with lymphadenitis). We found that this GI was missing from the MAH TH135 strain, but it was present in the other three strains, with different size (16.37 to 84.85 kb), different gene composition and integrated always in the same insertion site in the chromosome (Lahiri et al. 2014b). Therefore we named such GI as hypervariable GI (hvGI). Such heterogeneity was classified as further element contributing to the genetic diversity of MAH. In addition, the hvGI represents a genetic marker of MAH isolates, since it was not

found in other mycobacteria. That motivated us to characterize the hvGI in other MAH isolates from different sources and to determine the degree of variability of this hvGI.

2. Aim and justification of the study

NTM are an emerging public health concern. Their wide distribution in the environment favours their contact with humans. In addition, their persistence and resistance to antibiotics makes the treatment of NTM infections challenging. Among the NTM, *M. avium* and specifically the subspecies MAH is the clinically most relevant and the most frequently isolated NTM from clinical samples. Its high genetic diversity seems to confer the ability to MAH to adapt to a wide range of environmental conditions but also to live as pathogen in human cells. Moreover, the contribution of metabolic properties to adaptation of MAH to a clinical or environmental lifestyle is not known.

In this study we investigated the genetic and the metabolic diversity of MAH isolates.

We wanted to analyze whether the new recently identified hvGI can differentiate clinical and environmental MAH isolates. Specifically we wanted to know whether the hvGI is a genetic marker for clinical or for environmental isolates. In addition, we started the investigation of the function of one of the genes contained in the hvGI in order to get first insights about functional roles of genes present in the hvGI. The pathogenicity of bacteria may originate from genetic features and plasticity, and also from metabolic adaptation to the host and to different conditions. Therefore, we addressed another question: are clinical and environmental MAH isolates different in terms of metabolic features? Moreover, having the WGS data of the MAH isolates we wanted to compare to which degree genetic and metabolic relations correlate with each other.

3. Publications

3.1 First Publications

Andrea Sanchini, Torsten Semmler, Lei Mao, Narender Kumar, Flavia Dematheis, Kshitij Tandon, Vidyullatha Peddireddy, Niyaz Ahmed, Astrid Lewin. A hypervariable genomic island identified in clinical and environmental *Mycobacterium avium* subsp. *hominissuis* isolates from Germany. Int J Med Microbiol. 2016 Jul 18. Int J Med Microbiol. 2016 Nov;306(7):495-503. <https://doi.org/10.1016/j.ijmm.2016.07.001>.

Received: 15 April 2016

Revised: 06 June 2016

Accepted: 17 July 2016

You have to purchase this part online.

3.2 Second Publications

Andrea Sanchini, Flavia Dematheis, Torsten Semmler, Astrid Lewin. Metabolic phenotype of clinical and environmental *Mycobacterium avium* subsp. *hominissuis* isolates. PeerJ. 2017 Jan 3; 5:e2833. <https://doi.org/10.7717/peerj.2833>.

Received: 05 September 2016

Revised: 13 October 2016

Accepted: 27 November 2016

Metabolic phenotype of clinical and environmental *Mycobacterium avium* subsp. *hominissuis* isolates

Andrea Sanchini¹, Flavia Dematheis², Torsten Semmler³, Astrid Lewin^{Corresp. 1}

¹ Division 16, Mycotic and Parasitic Agents and Mycobacteria, Robert Koch Institute, Berlin, Germany

² Institute of Microbiology and Epizootics, Free University Berlin, Berlin, Germany

³ NG 1 Microbial Genomics, Robert Koch Institute, Berlin, Germany

Corresponding Author: Astrid Lewin

Email address: LewinA@rki.de

Background. *Mycobacterium avium* subsp. *hominissuis* (MAH) is an emerging opportunistic human pathogen. It can cause pulmonary infections, lymphadenitis and disseminated infections in immunocompromised patients. In addition, MAH is widespread in the environment, since it has been isolated from water, soil or dust. In the recent years, knowledge on MAH at molecular level substantially increased. On the contrary, knowledge of the MAH metabolic phenotypes remains limited.

Methods. In this study for the first time we analyzed the metabolic substrate utilization of ten MAH isolates, five from clinical and five from environmental source. We used the BIOLOG Phenotype Microarray™ technology. This technology permits the rapid and global analysis of metabolic phenotypes.

Results. The ten MAH isolates tested showed different metabolic patterns pointing to high intra-species diversity. Our MAH isolates preferred to use fatty acids such as Tween, caproic, butyric and propionic acid as a carbon source, and L-cysteine as a nitrogen source. Environmental MAH isolates resulted to be more metabolically active than clinical isolates, since the former metabolized more strongly butyric acid ($p = 0.0209$) and propionic acid ($p = 0.00307$).

Discussion. Our study provides new insight into the metabolism of MAH. Understanding how bacteria utilize substrates during infection might help the developing of strategies to fight such infections.

1 **Article Title**

2 Metabolic phenotype of clinical and environmental *Mycobacterium avium* subsp. *hominissuis*
3 isolates

4

5 **Authors**

6 Andrea Sanchini¹, Flavia Dematheis², Torsten Semmler³, Astrid Lewin^{1,*}

7

8 **Author affiliations**

9 ¹ Division 16, Mycotic and Parasitic Agents and Mycobacteria, Robert Koch Institute, Berlin,
10 Germany

11 ² Institute of Microbiology and Epizootics, Free University Berlin, Berlin, Germany

12 ³ NG 1 Microbial Genomics, Robert Koch Institute, Berlin, Germany

13

14 **Corresponding author**

15 Dr Astrid Lewin

16 Division 16, Mycotic and Parasitic Agents and Mycobacteria, Robert Koch Institute, Seestraße
17 10, 13353, Berlin, Germany.

18 Telephone: +4930187542112

19 E-mail: LewinA@rki.de

20

21 **Abstract**

22 **Background.** *Mycobacterium avium* subsp. *hominissuis* (MAH) is an emerging opportunistic
23 human pathogen. It can cause pulmonary infections, lymphadenitis and disseminated infections
24 in immuno-compromised patients. In addition, MAH is widespread in the environment, since it
25 has been isolated from water, soil or dust. In the recent years, knowledge on MAH at molecular
26 level substantially increased. On the contrary, knowledge of the MAH metabolic phenotypes
27 remains limited.

28 **Methods.** In this study for the first time we analyzed the metabolic substrate utilization of ten
29 MAH isolates, five from clinical and five from environmental source. We used the BIOLOG
30 Phenotype Microarray™ technology. This technology permits the rapid and global analysis of
31 metabolic phenotypes.

32 **Results.** The ten MAH isolates tested showed different metabolic patterns pointing to high intra-
33 species diversity. Our MAH isolates preferred to use fatty acids such as Tween, caproic, butyric
34 and propionic acid as a carbon source, and L-cysteine as a nitrogen source. Environmental MAH
35 isolates resulted to be more metabolically active than clinical isolates, since the former
36 metabolized more strongly butyric acid ($p = 0.0209$) and propionic acid ($p = 0.00307$).

37 **Discussion.** Our study provides new insight into the metabolism of MAH. Understanding how
38 bacteria utilize substrates during infection might help the developing of strategies to fight such
39 infections.

42 **Introduction**

43 *Mycobacterium avium* subsp. *hominissuis* (MAH) is clinically one of the most relevant non-
44 tuberculous mycobacteria (Tortoli 2014). MAH is an opportunistic human pathogen causing
45 pulmonary infections, lymphadenitis in small children and disseminated infections (Despierres et
46 al. 2012; Rindi & Garzelli 2014). It is of increasing public health relevance, with reports of
47 MAH infections increasing worldwide (Hoefsloot et al. 2013). Moreover, MAH is widespread in
48 the environment (Falkinham 2013; Lahiri et al. 2014). In recent years, there have been
49 substantial advances in the analysis of bacteria at the molecular level. Indeed, several whole
50 genome sequences are now available for many mycobacterial species, including MAH
51 (Bannantine et al. 2014; Kim et al. 2012; Uchiya et al. 2013; Wynne et al. 2010). In contrast,
52 there has been little concomitant advance in knowledge at the phenotypic level. Phenotype
53 analysis deserves greater attention, as it is the phenotype that selection pressure acts upon to
54 confer evolutionary advantages to the bacterial species (Plata et al. 2015). In order to address this
55 knowledge gap for bacterial phenotypes, BIOLOG Inc. developed the Phenotype MicroArray™
56 (PM) (BIOLOG, Hayward CA), a high throughput method for the rapid and global analysis of
57 microbial metabolic phenotypes (Bochner 2003; Bochner 2009; Bochner et al. 2001; Bochner et
58 al. 2008). The PM technology consists of several commercially available 96-well plates in which
59 every well has a different substrate, allowing nearly 2000 different microbial metabolic
60 phenotypes to be tested (Bochner 2003; Bochner 2009; Bochner et al. 2001; Bochner et al.
61 2008). PM technology has been applied to several microorganisms, including mycobacteria
62 (Baloni et al. 2014; Bochner et al. 2008; Borglin et al. 2012; Chen et al. 2012; Gupta et al. 2015;
63 Johnson et al. 2008; Khatri et al. 2013; Lofthouse et al. 2013; Mackie et al. 2014; Mishra &
64 Daniels 2013; Nai et al. 2013; Omsland et al. 2009; Tohsato & Mori 2008). One possible

65 application of PM is the detection of phenotype changes due to gene knock-out. For example,
66 Chen and co-authors showed that a *leuD* mutant of *M. avium* subsp *paratuberculosis* lost the
67 ability to use several carbon, nitrogen, sulfur and phosphorous substrates (Chen et al. 2012).
68 Other researchers showed that the use of 12 carbon substrates differentiated *M. tuberculosis* from
69 *M. bovis* (Khatri et al. 2013; Lofthouse et al. 2013).

70 In this study we tested clinical and environmental isolates of MAH using the PM technology.
71 Our aim was to describe the metabolic substrates utilized by MAH isolates and to identify any
72 metabolic differences between clinical and environmental MAH isolates.

74 **Materials and Methods**

75 **Bacterial isolates and BIOLOG phenotype microarray**

76 We analyzed five clinical and five environmental MAH isolates (Table 1).

77 We performed the BIOLOG Phenotype Microarray™ (BIOLOG, Hayward, CA) according to
78 the manufacturer's recommendations. The technology is based on the measurement of bacterial
79 respiration, which produces NADH (Bochner et al. 2001). If bacteria are able to metabolize a
80 specific substrate, electrons from NADH reduce a tetrazolium dye in an irreversible reaction
81 generating a purple color in the PM plate wells. This color change is measured and recorded
82 every 15 minutes by the reporter instrument OmniLog™ (BIOLOG, Hayward, CA), generating a
83 kinetic response curve for each well (Bochner 2003; Bochner 2009).

84 The ten MAH isolates were tested with the 96-wells plates PM1 to PM4, containing 190 carbon
85 (PM1 and PM2), 95 nitrogen (PM3), 59 phosphorous (PM4) and 35 sulfur (PM4) substrates. The
86 PM plates 1, 2 and 3 include one negative control well, in which bacteria are tested without any
87 substrate. The PM4 plate includes two negative control wells, one for the phosphorus and one for
88 the sulfur substrates. All isolates were tested three times. Briefly, we cultivated each MAH
89 isolate in 30 ml of 7H10 Middlebrook medium supplemented with 10% modified ADC-
90 enrichment (2% of glucose, 5% of BSA, 0,85% of NaCl) until an OD_{600 nm} of 0.3-0.6 was
91 achieved (mid-logarithmic phase of growth). The use of liquid cultures in place of agar reduces
92 bacterial clumping. Bacterial cultures were harvested by centrifugation for 10 minutes at 4000g
93 and pellets were re-suspended in 10 ml of distilled water. Bacterial cells were starved for one
94 night in water at room temperature to minimize false positive reactions due to nutrient
95 accumulation in MAH cells and to ensure the use of the substrates provided by the PM plates.

96 The following day the cells were centrifuged and re-suspended using a sterile stick in tubes
97 containing 10 ml of GN/GP-IF-0a (BIOLOG inoculating fluid), 120 μ l of 100 \times BIOLOG Redox
98 Dye Mix G and 1 ml of the appropriate additive (Table 2), until 85% transmittance was reached
99 as measured using the turbidimeter provided by BIOLOG. In order to reduce bacterial clumping,
100 the sterile stick used for inoculation was ground against the wall of the tube. A volume of 100 μ l
101 of this final suspension was added to each of the 96 wells of the PM plates. The PM plates were
102 then sealed to avoid drying and incubated at 37°C in the OmniLog® (BIOLOG, Hayward, CA)
103 incubator reader for 8 days.

104 As recommended by BIOLOG, we tested plates PM1 to PM4 using the same assay protocol but
105 without addition of bacteria in order to identify wells with abiotic dye reduction, which can
106 generate false positive results.

107 **Analysis of BIOLOG phenotype microarray data**

108 The raw kinetic data were exported as CSV files using OmniLog PM file Management/kinetic
109 Analysis module (Bochner 2003; Khatri et al. 2013). Differences in the metabolization of the
110 different substrates by the ten MAH isolates were investigated by analyzing the maximum height
111 of the bacterial respiration curves (parameter A) using the R-package opm (Vaas et al. 2013). To
112 allow comparisons across plates processed in different experimental runs, the A parameters were
113 normalized by subtracting the well mean of the negative control (Vaas et al. 2013). Furthermore,
114 the A parameters of the triplicates were combined by calculating the mean and discretized into
115 “positive”, “moderate” and “negative” metabolization using the method “discrete” within the R-
116 opm package. Substrates differentiating the isolates from each other were visualized as a
117 heatmap generated using the R-packages heatmap.plus with the Euclidean algorithm. The

118 heatmap displays the utilization of each substrate with a color key: yellow for strong positive
119 metabolization, green for moderate metabolization and blue for no metabolization.

120 **Analysis of metabolic pathways**

121 The metabolic pathways of the two substrates of interest butyric and propionic acid have been
122 further analyzed. Specifically, we extracted all sequences of the genes known to be associated
123 with the pathways related to butyric and propionic acid from the KEGG pathway database
124 (Kanehisa et al. 2016). We extracted the genes from all the *M. avium* subspecies (n=8) present in
125 the KEGG pathway database, namely: *M. avium* subsp. *paratuberculosis* K-10, *M. avium* subsp.
126 *paratuberculosis* MAP4, *M. avium* subsp. *paratuberculosis* E1, *M. avium* subsp.
127 *paratuberculosis* E93, *M. avium* subsp. *avium* DJO-44271, *M. avium* subsp. *avium* 2285 (R), *M.*
128 *avium* subsp. *avium* 2285 (S) and the *M. avium* 104. The redundant genes have been excluded.
129 Then we screened all such genes in genomes of our ten MAH isolates by performing a Custom
130 BLAST analysis using Geneious version 9 (Kearse et al. 2012). The parameters for the screening
131 that we used to determine if a gene was present or not were: sequence identity $\geq 90\%$, sequence
132 coverage $\geq 90\%$, e value ≤ 0.01 .

133 In addition, we analyzed the number of Single Nucleotide polymorphisms (SNP)s (both
134 synonymous and nonsynonymous) in the sequence of the genes detected in our MAH isolates.
135 For each gene, we also constructed a phylogenetic tree using the nucleotide sequences to
136 determine whether any SNP was associated with clinical or environmental source of the isolates
137 based on the Tamura–Nei model using Geneious version 9.

138 **Statistical analyses**

139 We generated two groups, one with data from all clinical isolates and the other with data from all
140 environmental isolates. Statistical differences between clinical and environmental isolates in the
141 metabolization of butyric acid and propionic acid were evaluated by means of 95% family-wise
142 comparison of group means (Tukey contrast test) of the parameter A on specific wells using the
143 function “opm_mcp” within the opm R-package. A p value less than 0.05 was considered to be
144 statistically significant.

145 **Whole genome sequencing of MAH isolates**

146 Genomic DNAs were extracted from the MAH isolates as described previously (Lewin et al.
147 2003). Whole genome sequencing (WGS) was performed using Illumina MiSeq 300 bp paired-
148 end sequencing, yielding a coverage that exceeded 100x. The NGS QC tool kit was used to
149 assess the quality of the data reads, which was set as reads with a minimum of 70 % of bases
150 having a phred score greater than 20 (Patel & Jain 2012). De novo assembly of the resulting
151 reads into multiple contigs was performed using CLC Genomics Workbench 8.0 (CLC bio,
152 Aarhus, Denmark) and contigs annotation was done using RAST (Aziz et al. 2008).

153 **Determination of the maximum common genome and of the accessory genome**

154 We determined the maximum common genome (MCG), comprising those genes present in all of
155 the ten MAH genomes, as reported previously (von Mentzer et al. 2014). All these genes were
156 then extracted from all genomes, concatenated and aligned. The resulting alignment was used to
157 generate a clustering tree using RAxML 8.1 (Stamatakis 2014).

158 For determination of the accessory genome we applied the PanGenome Pipeline – Roary. After
159 determination of the accessory genome of the ten MAH genomes and its distribution within

160 them, we separated those genes that are exclusively present only in either the environmental
161 strains or the clinical strains (Page et al. 2015).

162 Results

163 Substrate utilization of the ten MAH isolates

164 We tested the capability of our ten MAH isolates to metabolize 379 different substrates. In total,
165 334/379 (88.1 %) substrates were negative for all of the isolates (see Supplemental Table S1). A
166 total of 23/379 (6.1 %) substrates caused abiotic reactions and were excluded from further
167 analysis. A list of false-positive substrates is shown in the Supplemental Table S2. The kinetic
168 curves corresponding to the control plates PM1 to PM4 tested without bacteria are presented in
169 the Supplemental Fig. S1.

170 Only two carbon substrates, the fatty acid derivatives Tween 20 and Tween 40 were strongly
171 positive for all of the ten MAH isolates. The kinetic curves for these substrates reached 250
172 Omnilog units, amongst the highest values recorded in our analysis (see Supplemental Fig. S2
173 for all kinetic curves of the ten MAH isolates). The opm analysis revealed that a total of 20/379
174 (5.3 %) substrates were metabolized differently among the MAH isolates (Table 3). We therefore
175 carried out further analysis using only these substrates. The majority of these 20 substrates were
176 carbon substrates, 15/20 (75.0 %), followed by 3 nitrogen and 2 phosphorous substrates. The
177 heatmap in Fig. 1 shows the utilization of these 20 substrates among the ten MAH isolates. The
178 isolates are grouped according to their substrate utilization. Isolates utilizing similar substrates
179 appear to cluster together.

180 Two major clusters, each composed of five isolates, could be observed. One was rich in
181 environmental isolates (4/5) and the other was rich in clinical isolates (4/5). The substrates
182 predominantly contributing to this clustering were butyric acid and propionic acid and indeed,

183 the Tukey's test revealed that environmental isolates metabolized more strongly butyric acid ($p =$
184 0.0209) and propionic acid ($p = 0.00307$) than clinical isolates with statistical significance.

185 **Metabolic pathways analysis**

186 The propionic and butyric acid are involved in three and one pathway, respectively (Table 3). A
187 total of 151 genes have been identified in the KEGG database associated with all these pathways
188 (Kanehisa et al. 2016). In the supplemental Table S3 we reported the distribution and SNPs
189 analysis of those genes in the MAH genomes. Of the 151 genes, 134 (88.7 %) are present in all
190 the ten MAH. The median gene length was 1099 bp (range 318-2253), whereas the median
191 number of SNPs per gene is 17 (range 1-147). The phylogenetic analysis revealed that none of
192 the SNPs could be associated with the group of the clinical or the group of environmental MAH
193 isolates (see supplemental Table S4). In the propanoate pathway four operons have been
194 identified: *fadAB* associated with the β -oxidation of several fatty acids (DiRusso 1990), *ech8-9*
195 encoding for hydrogenases that play a role in energy conversion (Sant'Anna et al. 2015), *sucCD*
196 responsible for the succinate metabolism (Cerdeno-Tarraga et al. 2003) and *mutAB* involved in
197 the methylmalonate pathway (Schoenwolf & Alvarez 1989). In the nicotinate pathway there are
198 two operons: the *pntAA-AB-B* responsible for the transhydrogenation between NADH and NADP
199 (Anderlund et al. 1999) and *nadABC* involved in the biosynthesis of NAD⁺ (Vilcheze et al.
200 2010). In the degradation of aromatic compounds pathway we identified the *pcaHGB* operon
201 involved in the β -keto adipate pathway (Harwood & Parales 1996). In the butanoate pathway we
202 identified the *fadAB* and *ech8-9operons*, the *sdhCDAB* encoding for the succinate dehydrogenase
203 complex involved in the fatty acid metabolism (Nam et al. 2005) and the *ilvBN* responsible for
204 the acetolactate synthesis, a precursor of several amino acids (Keilhauer et al. 1993).

205 Clustering analysis and determination of the accessory genome

206 The WGS of the two reference strains MAH 104 and MAH TH135 were already in the GenBank
207 database and we submitted the remaining genomes at DDBJ/EMBL/GenBank under the
208 BioProject Number PRJNA299461. The MCG, the maximum number of genes shared by all ten
209 MAH isolates was 1,658, the alignment of which spanned 1.378 Mbp. The clustering analysis of
210 the ten MAH isolates is shown in Fig. 2. By comparing the genetic clustering obtained by WGS
211 with the phenotypic clustering obtained through BIOLOG PM we observed slight differences.
212 For examples, the isolates MAH E-96-2 and MAH E-82-7, which share identical metabolic
213 profiles, were genetically more distant from each other. Interestingly, at the genetic level there
214 was no obvious clustering between the group of clinical and the group of environmental isolates.

215 The accessory genome is constituted by 4,067 genes. A total of 1688 genes were specific for the
216 group of clinical isolates (supplemental Table S5). On the other hand, 698 genes were specific
217 for the group of environmental isolates (supplemental Table S6). We found no genes that were
218 present in all the clinical and absent in all the environmental isolates, and vice-versa. Among the
219 most abundant specific genes of the two groups of isolates, there were no known genes
220 associated with the pathways which involved butyric and propionic acid. However, genes
221 annotated as hypothetical proteins represented the most abundant specific genes of the two
222 groups

223 Discussion

224 This study represents the first phenotypic analysis of a collection of clinical and environmental
225 MAH isolates using the Biolog PM technology. We showed that the PM technology works well
226 and can be performed with MAH isolates. Strong positive reactions with several substrates were
227 observed with kinetic curves exceeding 200 Omnilog dye units. Although some substrates were
228 metabolized only moderately by our MAH isolates (green in Fig. 1), this might be due to the fact
229 that the use of such substrates by bacteria has a time lag.

230 The ten MAH isolates showed different metabolic patterns pointing to high intra-species
231 diversity. Only two out of the ten isolates had identical heatmap profiles (MAH E-96-2 and
232 MAH E-82-7).

233 Our study showed that MAH isolates prefer to metabolize fatty acids as a carbon source. Indeed,
234 the Tween substrates were strongly metabolized by all MAH isolates tested. This is in agreement
235 with prior studies, showing that Tween substrates were widely used by different mycobacterial
236 species (Baloni et al. 2014; Chen et al. 2012; Hayashi et al. 2010; Khatri et al. 2013; Lofthouse et
237 al. 2013; Wang et al. 2011). It has been reported that mycobacteria hydrolyze Tween 80 to
238 generate the fatty acid oleic acid, which can enter the Tricarboxylic acid (TCA) cycle or can be
239 used as a substrate for energy production (Lofthouse et al. 2013; Vandal et al. 2009). Other fatty
240 acids used by the majority of our MAH isolates are represented by two short fatty acids, caproic
241 acid and butyric acid (Kanehisa & Goto 2000; Kanehisa et al. 2016; Khatri et al. 2013). Caproic
242 acid and its derivatives are involved in several mycobacterial pathways such as the degradation
243 of aromatic compounds, oxocarboxylic acid metabolism or lysine degradation (Kanehisa & Goto
244 2000; Kanehisa et al. 2016). The butyric acid is the final product of butanoate metabolism.

245 Propionic acid is another fatty acid used by our MAH isolates and this represents the terminal
246 product of propanoate metabolism (Kanehisa & Goto 2000; Kanehisa et al. 2016). The nitrogen
247 source L-cysteine, used by six of our MAH isolates, is the final product of cysteine metabolism
248 and is involved in the biosynthesis of other amino acids such as methionine and histidine (Baloni
249 et al. 2014; Kanehisa & Goto 2000; Kanehisa et al. 2016).

250 The question of whether bacteria of the same species originating from either clinical or
251 environmental sources differ from each other is still a matter of discussion. Li and co-authors
252 showed that comparative genome analysis clearly distinguished clinical and environmental
253 *Vibrio parahaemolyticus* isolates from each other (Li et al. 2014). In contrast, other researchers
254 have reported no difference between clinical and environmental *Pseudomonas aeruginosa*
255 isolates with regard to virulence and metabolic properties (Alonso et al. 1999; Vives-Florez &
256 Garnica 2006). Although our study did not reveal any clear distinction between clinical or
257 environmental MAH isolates at the level of the whole genome, we observed differences between
258 clinical and environmental isolates with regard to substrate utilization. The most intriguing
259 difference is that the two fatty acids butyric acid and propionic acid are metabolized more by the
260 environmental than by clinical isolates.

261 We observed no difference in the presence / absence of genes associated with butyric or
262 propionic acid pathways among the group of clinical and the group of environmental MAH
263 isolates. The SNPs analysis of the genes involved in the pathways revealed that no SNPs were
264 associated with clinical or environmental origin of the MAH isolates. These evidences suggest
265 that the metabolic differences observed among clinical and environmental MAH isolates might
266 be due to difference in gene regulation. However, we screened all the genes that up to now have

267 been associated with the pathways of interest. We can speculate that there might be additional
268 genes, of unknown function, that might play a role in the above pathways.

269 The analysis of the accessory genome revealed that none of the genes specific for the clinical or
270 for the environmental isolates could be associated with the pathways of interest. However, future
271 studies on the high number of hypothetical proteins might clarify whether they have a role in the
272 pathways which involved the butyric and propionic acid.

273 The higher metabolic activity observed among environmental MAH isolates might be
274 advantageous for survival in an environment presenting a wider range of nutritional conditions
275 than the host cells alone. Further studies testing a larger number of isolates from different origins
276 might clarify this. In addition, it has been showed that in bacteria the fatty acids have a role in
277 adaptation to different environmental conditions (de Sarrau et al. 2012; de Sarrau et al. 2013;
278 Diomande et al. 2015).

279 Conclusions

280 Our study contributes to the understanding of the emerging pathogen MAH at the phenotypic and
281 metabolic level. Understanding how bacteria utilize their own or host-derived substrates during
282 infection might help the development of strategies to fight such infections. We encourage
283 phenotypic testing of microbial isolates from different ecological niches to identify key
284 substrates or pathways that can be used as targets for drug development or for selective growth
285 media development.

286

287 Acknowledgments

288 We would like to thank Barry Bochner (President of BIOLOG) for his invaluable input to this
289 study and Brian Weinrick (Albert Einstein College of Medicine, New York City) for his support
290 in developing the BIOLOG laboratory protocol. Elvira Richter (National Reference Center for
291 Mycobacteria, Borstel, Germany) and Roland Schulze-Röbbecke (University Hospital
292 Düsseldorf) provided a number of MAH isolates, Carsten Schwarz (Christiane Herzog Zentrum,
293 Charité, Berlin) provided respiratory samples from cystic fibrosis patients and Kei-ichi Uchiya
294 provided the reference strain MAH TH135. We thank Katharina Schaufler (Free University
295 Berlin) for her support with the BIOLOG data analysis and Inga Eichorn (Free University Berlin)
296 for her help with the whole genome sequencing data. We thank Steve Norley (Robert Koch
297 Institute, Berlin) for the English revision of the manuscript.

298

299

300 **References**

- 301 Alonso A, Rojo F, and Martinez JL. 1999. Environmental and clinical isolates of *Pseudomonas*
302 *aeruginosa* show pathogenic and biodegradative properties irrespective of their origin.
303 *Environ Microbiol* 1:421-430.
- 304 Anderlund M, Nissen TL, Nielsen J, Villadsen J, Rydstrom J, Hahn-Hagerdal B, and Kielland-
305 Brandt MC. 1999. Expression of the *Escherichia coli* *pntA* and *pntB* genes, encoding
306 nicotinamide nucleotide transhydrogenase, in *Saccharomyces cerevisiae* and its effect on
307 product formation during anaerobic glucose fermentation. *Appl Environ Microbiol*
308 65:2333-2340.
- 309 Aziz RK, Bartels D, Best AA, DeJongh M, Disz T, Edwards RA, Formsma K, Gerdes S, Glass
310 EM, Kubal M, Meyer F, Olsen GJ, Olson R, Osterman AL, Overbeek RA, McNeil LK,
311 Paarmann D, Paczian T, Parrello B, Pusch GD, Reich C, Stevens R, Vassieva O,
312 Vonstein V, Wilke A, and Zagnitko O. 2008. The RAST Server: rapid annotations using
313 subsystems technology. *BMC Genomics* 9:75. 10.1186/1471-2164-9-75
- 314 Baloni P, Padiadpu J, Singh A, Gupta KR, and Chandra N. 2014. Identifying feasible metabolic
315 routes in *Mycobacterium smegmatis* and possible alterations under diverse nutrient
316 conditions. *BMC Microbiol* 14:276. 10.1186/s12866-014-0276-5
- 317 Bannantine JP, Bayles DO, Robbe-Austerman S, Burrell AM, and Stabel JR. 2014. Draft
318 Genome Sequence of a *Mycobacterium avium* Complex Isolate from a Broadbill Bird.
319 *Genome Announc* 2. 10.1128/genomeA.01268-13
- 320 Bochner BR. 2003. New technologies to assess genotype-phenotype relationships. *Nat Rev Genet*
321 4:309-314. 10.1038/nrg1046
- 322 Bochner BR. 2009. Global phenotypic characterization of bacteria. *FEMS Microbiol Rev* 33:191-
323 205. 10.1111/j.1574-6976.2008.00149.x
- 324 Bochner BR, Gadzinski P, and Panomitros E. 2001. Phenotype microarrays for high-throughput
325 phenotypic testing and assay of gene function. *Genome Res* 11:1246-1255.
326 10.1101/gr.186501
- 327 Bochner BR, Giovannetti L, and Viti C. 2008. Important discoveries from analysing bacterial
328 phenotypes. *Mol Microbiol* 70:274-280. 10.1111/j.1365-2958.2008.06383.x
- 329 Borglin S, Joyner D, DeAngelis KM, Khudyakov J, D'Haeseleer P, Joachimiak MP, and Hazen
330 T. 2012. Application of phenotypic microarrays to environmental microbiology. *Curr*
331 *Opin Biotechnol* 23:41-48. 10.1016/j.copbio.2011.12.006
- 332 Cerdeno-Tarraga AM, Efstratiou A, Dover LG, Holden MT, Pallen M, Bentley SD, Besra GS,
333 Churcher C, James KD, De Zoysa A, Chillingworth T, Cronin A, Dowd L, Feltwell T,
334 Hamlin N, Holroyd S, Jagels K, Moule S, Quail MA, Rabinowitsch E, Rutherford KM,
335 Thomson NR, Unwin L, Whitehead S, Barrell BG, and Parkhill J. 2003. The complete
336 genome sequence and analysis of *Corynebacterium diphtheriae* NCTC13129. *Nucleic*
337 *Acids Res* 31:6516-6523.
- 338 Chen JW, Scaria J, and Chang YF. 2012. Phenotypic and transcriptomic response of auxotrophic
339 *Mycobacterium avium* subsp. *paratuberculosis* *leuD* mutant under environmental stress.
340 *PLoS One* 7:e37884. 10.1371/journal.pone.0037884
- 341 de Sarrau B, Clavel T, Clerte C, Carlin F, Ginies C, and Nguyen-The C. 2012. Influence of
342 anaerobiosis and low temperature on *Bacillus cereus* growth, metabolism, and membrane
343 properties. *Appl Environ Microbiol* 78:1715-1723. 10.1128/AEM.06410-11

- 344 de Sarrau B, Clavel T, Zwickel N, Despres J, Dupont S, Beney L, Tourdot-Marechal R, and
345 Nguyen-The C. 2013. Unsaturated fatty acids from food and in the growth medium
346 improve growth of *Bacillus cereus* under cold and anaerobic conditions. *Food Microbiol*
347 36:113-122. 10.1016/j.fm.2013.04.008
- 348 Despierres L, Cohen-Bacrie S, Richet H, and Drancourt M. 2012. Diversity of *Mycobacterium*
349 *avium* subsp. *hominissuis* mycobacteria causing lymphadenitis, France. *Eur J Clin*
350 *Microbiol Infect Dis* 31:1373-1379. 10.1007/s10096-011-1452-2
- 351 Diomande SE, Nguyen-The C, Guinebretiere MH, Broussolle V, and Brillard J. 2015. Role of
352 fatty acids in *Bacillus* environmental adaptation. *Front Microbiol* 6:813.
353 10.3389/fmicb.2015.00813
- 354 DiRusso CC. 1990. Primary sequence of the *Escherichia coli* *fadBA* operon, encoding the fatty
355 acid-oxidizing multienzyme complex, indicates a high degree of homology to eucaryotic
356 enzymes. *J Bacteriol* 172:6459-6468.
- 357 Falkinham JO, 3rd. 2013. Ecology of nontuberculous mycobacteria--where do human infections
358 come from? *Semin Respir Crit Care Med* 34:95-102. 10.1055/s-0033-1333568
- 359 Gupta KR, Kasetty S, and Chatterji D. 2015. Novel functions of (p)ppGpp and Cyclic di-GMP in
360 mycobacterial physiology revealed by phenotype microarray analysis of wild-type and
361 isogenic strains of *Mycobacterium smegmatis*. *Appl Environ Microbiol* 81:2571-2578.
362 10.1128/AEM.03999-14
- 363 Harwood CS, and Parales RE. 1996. The beta-ketoadipate pathway and the biology of self-
364 identity. *Annu Rev Microbiol* 50:553-590. 10.1146/annurev.micro.50.1.553
- 365 Hayashi D, Takii T, Mukai T, Makino M, Yasuda E, Horita Y, Yamamoto R, Fujiwara A, Kanai
366 K, Kondo M, Kawarazaki A, Yano I, Yamamoto S, and Onozaki K. 2010. Biochemical
367 characteristics among *Mycobacterium bovis* BCG substrains. *FEMS Microbiol Lett*
368 306:103-109. 10.1111/j.1574-6968.2010.01947.x
- 369 Hoefsloot W, van Ingen J, Andrejak C, Angeby K, Bauriaud R, Bemer P, Beylis N, Boeree MJ,
370 Cacho J, Chihota V, Chimara E, Churchyard G, Cias R, Daza R, Daley CL, Dekhuijzen
371 PN, Domingo D, Drobniowski F, Esteban J, Fauville-Dufaux M, Folkvardsen DB,
372 Gibbons N, Gomez-Mampaso E, Gonzalez R, Hoffmann H, Hsueh PR, Indra A, Jagielski
373 T, Jamieson F, Jankovic M, Jong E, Keane J, Koh WJ, Lange B, Leao S, Macedo R,
374 Mannsaker T, Marras TK, Maugein J, Milburn HJ, Mlinko T, Morcillo N, Morimoto K,
375 Papaventsis D, Palenque E, Paez-Pena M, Piersimoni C, Polanova M, Rastogi N, Richter
376 E, Ruiz-Serrano MJ, Silva A, da Silva MP, Simsek H, van Soolingen D, Szabo N,
377 Thomson R, Tortola Fernandez T, Tortoli E, Totten SE, Tyrrell G, Vasankari T, Villar M,
378 Walkiewicz R, Winthrop KL, Wagner D, and Nontuberculous Mycobacteria Network
379 European Trials G. 2013. The geographic diversity of nontuberculous mycobacteria
380 isolated from pulmonary samples: an NTM-NET collaborative study. *Eur Respir J*
381 42:1604-1613. 10.1183/09031936.00149212
- 382 Johnson DA, Tetu SG, Phillippy K, Chen J, Ren Q, and Paulsen IT. 2008. High-throughput
383 phenotypic characterization of *Pseudomonas aeruginosa* membrane transport genes. *PLoS*
384 *Genet* 4:e1000211. 10.1371/journal.pgen.1000211
- 385 Kanehisa M, and Goto S. 2000. KEGG: kyoto encyclopedia of genes and genomes. *Nucleic*
386 *Acids Res* 28:27-30.
- 387 Kanehisa M, Sato Y, Kawashima M, Furumichi M, and Tanabe M. 2016. KEGG as a reference
388 resource for gene and protein annotation. *Nucleic Acids Res* 44:D457-462.
389 10.1093/nar/gkv1070

- 390 Kearse M, Moir R, Wilson A, Stones-Havas S, Cheung M, Sturrock S, Buxton S, Cooper A,
391 Markowitz S, Duran C, Thierer T, Ashton B, Meintjes P, and Drummond A. 2012.
392 Geneious Basic: an integrated and extendable desktop software platform for the
393 organization and analysis of sequence data. *Bioinformatics* 28:1647-1649.
394 10.1093/bioinformatics/bts199
- 395 Keilhauer C, Eggeling L, and Sahm H. 1993. Isoleucine synthesis in *Corynebacterium*
396 *glutamicum*: molecular analysis of the *ilvB-ilvN-ilvC* operon. *J Bacteriol* 175:5595-
397 5603.
- 398 Khatri B, Fielder M, Jones G, Newell W, Abu-Oun M, and Wheeler PR. 2013. High throughput
399 phenotypic analysis of *Mycobacterium tuberculosis* and *Mycobacterium bovis* strains'
400 metabolism using biolog phenotype microarrays. *PLoS One* 8:e52673.
401 10.1371/journal.pone.0052673
- 402 Kim BJ, Choi BS, Lim JS, Choi IY, Lee JH, Chun J, Kook YH, and Kim BJ. 2012. Complete
403 genome sequence of *Mycobacterium intracellulare* strain ATCC 13950(T). *J Bacteriol*
404 194:2750. 10.1128/JB.00295-12
- 405 Lahiri A, Kneisel J, Kloster I, Kamal E, and Lewin A. 2014. Abundance of *Mycobacterium*
406 *avium* ssp. *hominissuis* in soil and dust in Germany - implications for the infection route.
407 *Lett Appl Microbiol* 59:65-70. 10.1111/lam.12243
- 408 Lewin A, Freytag B, Meister B, Sharbati-Tehrani S, Schafer H, and Appel B. 2003. Use of a
409 quantitative TaqMan-PCR for the fast quantification of mycobacteria in broth culture,
410 eukaryotic cell culture and tissue. *J Vet Med B Infect Dis Vet Public Health* 50:505-509.
- 411 Li L, Wong HC, Nong W, Cheung MK, Law PT, Kam KM, and Kwan HS. 2014. Comparative
412 genomic analysis of clinical and environmental strains provides insight into the
413 pathogenicity and evolution of *Vibrio parahaemolyticus*. *BMC Genomics* 15:1135.
414 10.1186/1471-2164-15-1135
- 415 Lofthouse EK, Wheeler PR, Beste DJ, Khatri BL, Wu H, Mendum TA, Kierzek AM, and
416 McFadden J. 2013. Systems-based approaches to probing metabolic variation within the
417 *Mycobacterium tuberculosis* complex. *PLoS One* 8:e75913.
418 10.1371/journal.pone.0075913
- 419 Mackie AM, Hassan KA, Paulsen IT, and Tetu SG. 2014. Biolog Phenotype Microarrays for
420 phenotypic characterization of microbial cells. *Methods Mol Biol* 1096:123-130.
421 10.1007/978-1-62703-712-9_10
- 422 Mishra MN, and Daniels L. 2013. Characterization of the MSMEG_2631 gene (*mmp*) encoding
423 a multidrug and toxic compound extrusion (MATE) family protein in *Mycobacterium*
424 *smegmatis* and exploration of its polyspecific nature using biolog phenotype microarray.
425 *J Bacteriol* 195:1610-1621. 10.1128/JB.01724-12
- 426 Nai C, Wong HY, Pannenbecker A, Broughton WJ, Benoit I, de Vries RP, Gueidan C, and
427 Gorbushina AA. 2013. Nutritional physiology of a rock-inhabiting, model microcolonial
428 fungus from an ancestral lineage of the Chaetothyriales (Ascomycetes). *Fungal Genet*
429 *Biol* 56:54-66. 10.1016/j.fgb.2013.04.001
- 430 Nam TW, Park YH, Jeong HJ, Ryu S, and Seok YJ. 2005. Glucose repression of the *Escherichia*
431 *coli* *sdhCDAB* operon, revisited: regulation by the CRP*cAMP complex. *Nucleic Acids*
432 *Res* 33:6712-6722. 10.1093/nar/gki978
- 433 Omsland A, Cockrell DC, Howe D, Fischer ER, Virtaneva K, Sturdevant DE, Porcella SF, and
434 Heinzen RA. 2009. Host cell-free growth of the Q fever bacterium *Coxiella burnetii*.
435 *Proc Natl Acad Sci U S A* 106:4430-4434. 10.1073/pnas.0812074106

- 436 Page AJ, Cummins CA, Hunt M, Wong VK, Reuter S, Holden MT, Fookes M, Falush D, Keane
437 JA, and Parkhill J. 2015. Roary: rapid large-scale prokaryote pan genome analysis.
438 *Bioinformatics* 31:3691-3693. 10.1093/bioinformatics/btv421
- 439 Patel RK, and Jain M. 2012. NGS QC Toolkit: a toolkit for quality control of next generation
440 sequencing data. *PLoS One* 7:e30619. 10.1371/journal.pone.0030619
- 441 Plata G, Henry CS, and Vitkup D. 2015. Long-term phenotypic evolution of bacteria. *Nature*
442 517:369-372. 10.1038/nature13827
- 443 Rindi L, and Garzelli C. 2014. Genetic diversity and phylogeny of *Mycobacterium avium*. *Infect*
444 *Genet Evol* 21:375-383. 10.1016/j.meegid.2013.12.007
- 445 Sant'Anna FH, Lebedinsky AV, Sokolova TG, Robb FT, and Gonzalez JM. 2015. Analysis of
446 three genomes within the thermophilic bacterial species *Caldanaerobacter subterraneus*
447 with a focus on carbon monoxide dehydrogenase evolution and hydrolase diversity. *BMC*
448 *Genomics* 16:757. 10.1186/s12864-015-1955-9
- 449 Schoenwolf GC, and Alvarez IS. 1989. Roles of neuroepithelial cell rearrangement and division
450 in shaping of the avian neural plate. *Development* 106:427-439.
- 451 Stamatakis A. 2014. RAxML version 8: a tool for phylogenetic analysis and post-analysis of
452 large phylogenies. *Bioinformatics* 30:1312-1313. 10.1093/bioinformatics/btu033
- 453 Tohsato Y, and Mori H. 2008. Phenotype profiling of single gene deletion mutants of *E. coli*
454 using Biolog technology. *Genome Inform* 21:42-52.
- 455 Tortoli E. 2014. Microbiological features and clinical relevance of new species of the genus
456 *Mycobacterium*. *Clin Microbiol Rev* 27:727-752. 10.1128/CMR.00035-14
- 457 Uchiya K, Takahashi H, Yagi T, Moriyama M, Inagaki T, Ichikawa K, Nakagawa T, Nikai T,
458 and Ogawa K. 2013. Comparative genome analysis of *Mycobacterium avium* revealed
459 genetic diversity in strains that cause pulmonary and disseminated disease. *PLoS One*
460 8:e71831. 10.1371/journal.pone.0071831
- 461 Vaas LA, Sikorski J, Hofner B, Fiebig A, Buddruhs N, Klenk HP, and Goker M. 2013. opm: an
462 R package for analysing OmniLog(R) phenotype microarray data. *Bioinformatics*
463 29:1823-1824. 10.1093/bioinformatics/btt291
- 464 Vandal OH, Nathan CF, and Ehrt S. 2009. Acid resistance in *Mycobacterium tuberculosis*. *J*
465 *Bacteriol* 191:4714-4721. 10.1128/JB.00305-09
- 466 Vilcheze C, Weinrick B, Wong KW, Chen B, and Jacobs WR, Jr. 2010. NAD⁺ auxotrophy is
467 bacteriocidal for the tubercle bacilli. *Mol Microbiol* 76:365-377. 10.1111/j.1365-
468 2958.2010.07099.x
- 469 Vives-Florez M, and Garnica D. 2006. Comparison of virulence between clinical and
470 environmental *Pseudomonas aeruginosa* isolates. *Int Microbiol* 9:247-252.
- 471 von Mentzer A, Connor TR, Wieler LH, Semmler T, Iguchi A, Thomson NR, Rasko DA, Joffre
472 E, Corander J, Pickard D, Wiklund G, Svennerholm AM, Sjoling A, and Dougan G.
473 2014. Identification of enterotoxigenic *Escherichia coli* (ETEC) clades with long-term
474 global distribution. *Nat Genet* 46:1321-1326. 10.1038/ng.3145
- 475 Wang C, Mahrous EA, Lee RE, Vestling MM, and Takayama K. 2011. Novel Polyoxyethylene-
476 Containing Glycolipids Are Synthesized in *Corynebacterium matruchotii* and
477 *Mycobacterium smegmatis* Cultured in the Presence of Tween 80. *J Lipids* 2011:676535.
478 10.1155/2011/676535
- 479 Wynne JW, Seemann T, Bulach DM, Coutts SA, Talaat AM, and Michalski WP. 2010.
480 Resequencing the *Mycobacterium avium* subsp. paratuberculosis K10 genome: improved

481 annotation and revised genome sequence. *J Bacteriol* 192:6319-6320. 10.1128/JB.00972-
482 10
483

1 **Table 1** Characteristics of the ten MAH isolates analyzed in this study.

MAH Isolate name	Year of isolation	Source	Provider or reference	Accession of whole genome sequence
P-10091-06	2006	Clinical - Child with lymphadenitis	NRC for Mycobacteria, Borstel, Germany	LNAV00000000
2721	2004	Clinical - Child with lymphadenitis	NRC for Mycobacteria, Borstel, Germany	AWXJ00000000
P-9-13	2013	Clinical - Adult pulmonary infection	Charité Hospital, Berlin, Germany	LNBB00000000
104	1983	Clinical - Adult pulmonary infection	Reference strain, USA	CP000479
TH135	2013	Clinical - Adult pulmonary infection	Reference strain, Japan	AP012555
E-128	2010	Environmental - Soil	Friedrich Löffler Institute, Jena, Germany	LVCS00000000
E-96-2	2010	Environmental - Soil	This study	LMVW00000000
E- 82-7	2010	Environmental - Dust	This study	LNAF00000000
27-1	2010	Environmental - Dust	This study	AWXK00000000
E-2514	na	Environmental - Water	University of Düsseldorf, Germany	LNBJ00000000

2

3

MAH: *Mycobacterium avium* subsp. *hominissuis*; NRC: National reference center; na: not available

1 **Table 2** Additives used for each PM plates. As additive are usually provided nutrient that are absent to the PM minimal media, but present in a
 2 standard MAH growth conditions. We used additives to make a complete minimal medium but omitted anything that could act as a source of the
 3 substrates of interest (for example, we did not include nitrate additives in the nitrogen source plates).

	Additive a	Additive b
PM plate usage	PM1, PM2, PM4	PM3
Ingredients	24mM MgCl ₂ 12mM CaCl ₂ 0,0012% ZnSO ₄ 0,06% ferric ammonium citrate 1,2% NH ₄ Cl 0,01% tween 80	24mM MgCl ₂ 12mM CaCl ₂ 0,0012% ZnSO ₄ 0,01% tween 80

4

1 **Table 3** The 20 substrates differentiating the ten MAH isolates analyzed in this study.

PM Plate	Substrate and well number	Pathway involved	Reference
PM1 Carbon	Acetic acid – C08	Pyruvate metabolism	(Baloni <i>et al.</i> 2014; Nai <i>et al.</i> 2013)
	Acetoacetic acid – G07	Pyruvate metabolism	(Baloni <i>et al.</i> 2014; Nai <i>et al.</i> 2013)
	Methyl pyruvate – G10	Pyruvate metabolism	(Baloni <i>et al.</i> 2014; Nai <i>et al.</i> 2013)
	Mono-methyl Succinate – G09	Tricarboxylic acid cycle	(Baloni <i>et al.</i> 2014; Nai <i>et al.</i> 2013)
	Propionic acid – F07	Propanoate metabolism, Nicotinate and nicotinamide metabolism, Degradation of aromatic compounds	(Baloni, <i>et al.</i> 2014; Kanehisa and Goto 2000; Kanehisa <i>et al.</i> 2016; Nai <i>et al.</i> 2013)
	D-psicose – H05	Glycolysis and branches	(Baloni <i>et al.</i> 2014; Nai <i>et al.</i> 2013)
	Pyruvic acid – H08	Pyruvate metabolism	(Baloni <i>et al.</i> 2014; Nai <i>et al.</i> 2013)
	Tween 80 – E05	Fatty acid metabolism	(Baloni <i>et al.</i> 2014; Nai <i>et al.</i> 2013)
PM2 Carbon	L-alaninamide – G02	Amino acid metabolism	(Nai <i>et al.</i> 2013)
	Butyric acid – D12	Butanoate metabolism	(Baloni, <i>et al.</i> 2014; Kanehisa and Goto 2000; Kanehisa <i>et al.</i> 2016; Nai <i>et al.</i> 2013)
	Caproic acid – E02	Carboxylic acid metabolism	(Nai <i>et al.</i> 2013)
	L-histidine – G06	Amino acid metabolism	(Nai <i>et al.</i> 2013)
	γ -hydroxy-butyric acid – E09	Succinate metabolism	(Breitkreuz <i>et al.</i> 2003; Nai <i>et al.</i> 2013)
	β -methyl-D-galactoside – C07	Galactose Metabolism	(Nai <i>et al.</i> 2013)
PM3 Nitrogen	Sebacic acid – F08	Carboxylic acid metabolism	(Nai <i>et al.</i> 2013)
	D,L- α -amino-caprylic acid – G10	Amino acid metabolism	(Baloni <i>et al.</i> 2014)
	L-cysteine – A11	Amino acid metabolism	(Baloni <i>et al.</i> 2014)
PM4 Phosphorous and sulphur	D-galactosamine – E09	Amino-sugar pathway	(Baloni <i>et al.</i> 2014)
	Carbamyl phosphate – B05	Urea cycle and Pyrimidine synthesis	(Nelson 2004)
	Sodium pyrophosphate – A03	Phosphoric acid synthesis	(Nelson 2004)

2

3

4

5

Figure 1

Heatmap showing the 20 substrates that were differently metabolized by the ten MAH isolates analyzed in this study.

The color key scale for each substrate is based on dye reduction quantified by Omnilog units. A yellow color indicates strong positive substrate metabolization, a green color moderate metabolization and a blue color indicates no substrate metabolization. Regarding the MAH isolates, environmental isolates are marked in orange, while clinical isolates are marked in blue.

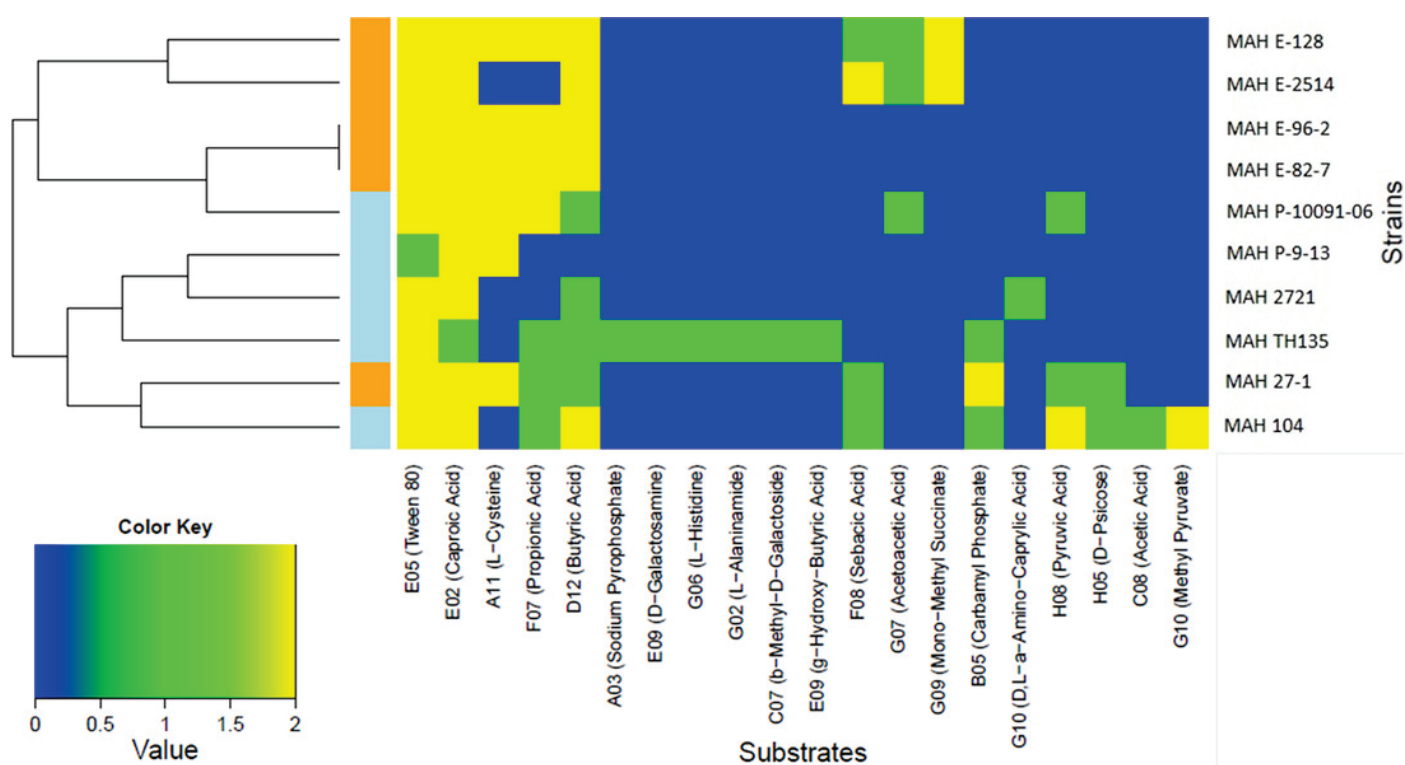
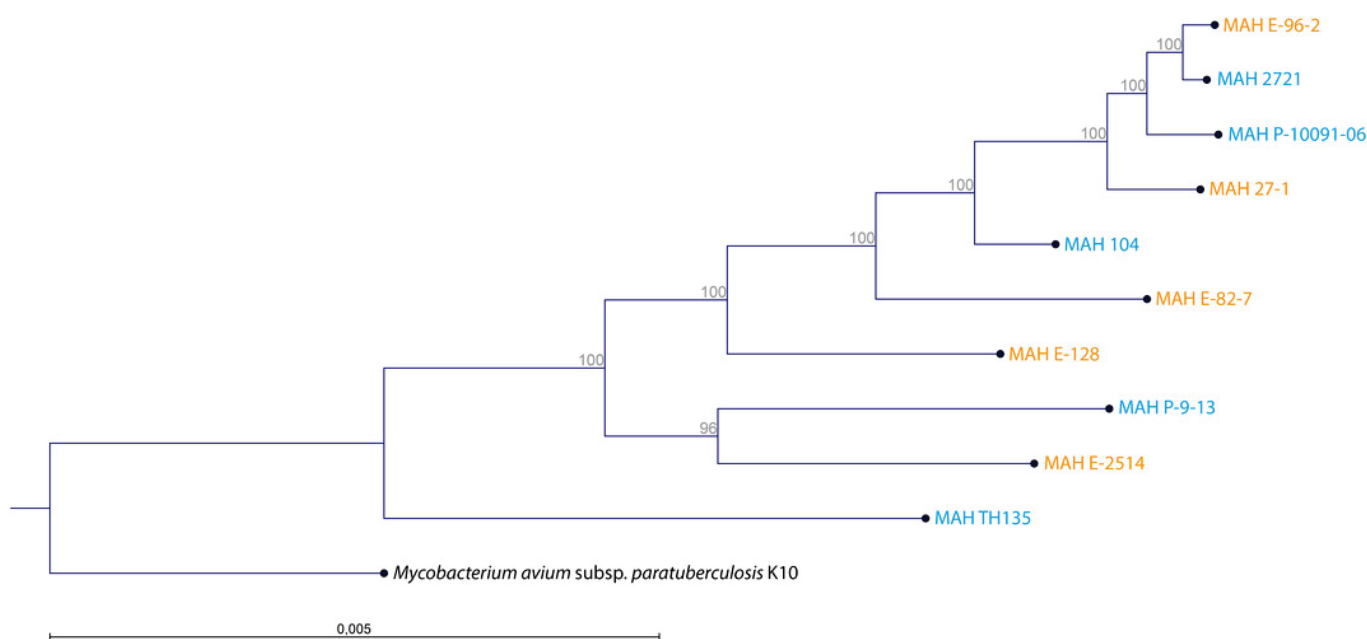


Figure 2

Clustering of the 10 MAH isolates.

The tree was generated using RAxML 8.1. The alignment comprised 1,658 genes constituting the maximum common genome of our ten MAH isolates. Two reference strains were also included (MAH 104 and MAH TH135). The genome sequence of *M. avium* subsp. *paratuberculosis* K10 (Accession Number: AE016958) was used as outgroup. Isolate origin is also represented by blue for clinical origin and orange for environmental origin. The percentage of trees in which the associated taxa clustered together is shown adjacent to the branches.



4. Discussion

This thesis contributes to our knowledge about genetic and metabolic diversity of MAH, which are emerging opportunistic human pathogens also widespread in the environment. We identified and characterized the hvGI in a population of MAH isolates from Germany. This hvGI contributes to the genetic diversity of MAH isolates. Our study expanded the knowledge on genome plasticity of MAH. In addition, we also studied the metabolic properties of MAH isolates; specifically we gave an overview on the use of substrates by MAH isolates from different sources.

4.1 Implications of the hvGI for MAH

We identified and characterized the hvGI in more than forty MAH isolated from clinical and environmental sources. The hvGI is a dynamic region; we identified eight types of hvGI, also organized in combinations of multiple hvGIs inserted in the same position of the MAH chromosome. For these reasons the hvGI was termed as hypervariable. GIs have been previously identified in mycobacteria. For example, three GIs were recently identified in MTB, named MP-1, MP-2 and MP-3, carrying genes important for bacterial pathogenesis. The MP-1 GI carries the clustered regularly interspaced short palindromic repeats (CRISPR)/Cas system, a system responsible for the persistence of MTB infections (Hille & Charpentier 2016). The MPI-2 and MPI-3 GIs carry other important genes such as genes encoding for PE/PPE family proteins, genes encoding for a type VII secretion system and genes responsible for the mycolic acids biosynthesis (Xie et al. 2014). The importance of mycolic acids for mycobacterial virulence and host-pathogen interaction has been discussed above. In NTM more evidences regarding GIs are coming: in *M. massiliense*, one of the subspecies of *M. abscessus*, the GI MmGI-1 has been described, with putative function in lipid metabolism. The genes of the MmGI-1 were similar to genes of MAC, suggesting an HGT between *M. massiliense* and MAC isolates (Xie et al. 2014). An alternative possibility is that both species acquired these genes from other bacteria. Another GI has been analyzed in MAP, with a possible role in zinc metabolism (Eckelt et al. 2014). However, all these studies have been conducted only on single isolate; therefore it is not known whether these GIs are

shared by all isolates of the same species or only by specific subpopulations or isolates. The hvGI that we discovered has been found in both clinical and environmental isolates. We did not find any correlation between presence of a specific hvGI and isolation from either patients or environment. The same evidences came out also when we further stratified the analysis for specific isolation source (pulmonary infections, lymphadenitis, water, soil or dust). When we compared the maximum common genome of the MAH isolates containing the hvGI, we observed no clustering between clinical and environmental MAH isolates. Clinical and environmental MAH seem to represent a heterogeneous mixture of isolates. In conclusion the hvGI seems not to be a marker or to determine whether an MAH isolate is clinical or environmental. Another study reported a different conclusion: Barthpo and co-authors demonstrated that GIs differentiated among clinical and environmental *Burkholderia pseudomallei* isolates (Barthpo et al. 2012). One can speculate that in case of MAH host factors such as immunological reactions determine if colonization with MAH will cause an infection.

The hvGIs carry interesting genes annotated as known/putative virulence factors or genes known to be involved in host-pathogen interaction or antibiotic resistance. For example, the *mce* genes are organized in an operon encoding for the mammalian cell entry (MCE) proteins (Forrellad et al. 2013). MCE proteins are known virulence factors in MTB, being responsible for the invasion and the survival of MTB within human macrophages (Arruda et al. 1993; Stewart et al. 2005). In addition, *mce1A* and *mce3A* are important for bacterial penetration also in other types of cells such as epitheliocytes (El-Shazly et al. 2007). Another attractive set of genes is represented by the genes encoding for PE/PPE proteins, present for example in the hvGI of the reference strain MAH 104. Genes encoding for PE/PPE proteins are largely represented in the mycobacterial genomes, since they represent almost 10% of the whole mycobacterial genome (Mukhopadhyay & Balaji 2011). These proteins are located in the mycobacterial cell wall (Sampson 2011). The different PE/PPE proteins might have different roles in mycobacteria. In one example, two mutagenesis studies indicate that these proteins inhibit the maturation and the acidification of the phagosome, allowing for MTB survival within human cells (Akhter et al. 2012; Li et al. 2005b). Similar to our study, Saini and co-

authors also found PE/PPE genes located within mobile genetic elements such as GI in *M. indicus pranii* isolates (Saini et al. 2012). In our hvGI there are also genes encoding for the nitric oxide reductase activation protein which might be involved in the resistance to the nitric oxide produced by the macrophages after mycobacterial ingestion (Jung et al. 2013).

The hvGI contains also a gene annotated as *mmpL10* that stimulated our curiosity. The *mmpL* genes encode for the Mycobacterial membrane protein Large (MmpL) proteins that are transmembrane proteins and members of the Resistance, Nodulation and Cell division protein family. MmpL proteins are responsible for different functions, such as the transport of glycolipids through the mycobacterial cell wall or the heme uptake (Bailo et al. 2015). MmpL proteins have been studied almost exclusively in MTB where they demonstrated virulence potential. Indeed, experiments using mouse models revealed that MmpL4 and MmpL7 are required for early stages of infection by MTB, while MmpL8 and MmpL11 are crucial at a chronic stage of infection (Bailo et al. 2015; Domenech et al. 2005). In addition, the impact of MmpL proteins on antibiotic-resistance is controversially discussed. Domenech and co-authors reported that MmpL proteins do not affect antibiotic-resistance in MTB (Domenech et al. 2005). On the contrary, recent studies suggested an association of MmpL5 with cross-resistance to clofazimine (used as third-line drug for TB) and to bedaquiline (a diarylquinolines recently approved for TB treatment) in MTB (Andries et al. 2014; Bailo et al. 2015; Jang et al. 2008).

For all these reasons, and because there are scarce knowledge on the role of MmpL proteins in MAH, we decided to investigate some of the functions of the *mmpL10* gene present in the hvGI (data not shown). We reduced the *mmpL10* gene expression in one of our MAH isolates (MAH 27-1) by about 50% by introducing a *mmpL10* antisense plasmid into this strain. Then we performed functional studies on the wild-type MAH 27-1 and its antisense derivative with reduced *mmpL10* gene expression. We measured the minimal inhibitory concentrations (MICs) towards 13 clinically relevant antibiotics in order to investigate whether the *mmpL10* gene influences the antibiotic-resistance. We found that the antisense strain was less resistant (two-fold difference in MICs) to Rifampin and Linezolid when compared to the wild-type strain, suggesting that the *mmpL10* gene might play a role in antibiotic-resistance. We

hypothesize that the MmpL10 protein in our MAH isolates functions as transmembrane channel and can be involved in the extrusion of antibiotics from the cell (data not shown). In the literature it has been shown that in *M. avium* the induction of transmembrane efflux pumps is an important step in the development of antibiotic-resistance (Schmalstieg et al. 2012). The performance of laboratory tests on additional isolates, along with the generation of an *mmpL10* knockout mutant may further confirm this hypothesis.

We subjected the wild-type MAH 27-1 and its antisense derivative strain to phenotype microarray screening using the Phenotype MicroArray™ (PM) (BIOLOG, Hayward CA) assay (Bochner et al. 2001; Khatri et al. 2013), in order to determine if the *mmpL10* gene determines metabolic activities (data not shown). The wild type strain metabolized stronger the sugar D-Psicose when compared to the antisense strain. This evidence suggests that the MmpL10 protein might be involved in the transport of certain carbohydrates across the membrane. This result of our study is similar to results shown by Belardinelli and co-authors, who showed that the MmpL10 protein in MTB is involved in the transport of acylated trehaloses (Belardinelli et al. 2014).

These functional studies suggest that the *mmpL10* gene contained in the hvGI of MAH might have a role in antibiotic-resistance and in carbohydrates transport across the mycobacterial cell wall supporting the hypothesis that the hvGI plays a role in metabolism and adaptation of MAH. GIs are genetic elements integrated in the chromosome able to spread to other species via HGT. The mobility of the hvGI might transfer genes with known or potential virulence or antibiotic-resistance capacity (such as *mmpL10*, *mce* or PE/PPE) to other species. This is of special awareness for *M. avium* because it is a pathogen well-known for acquiring and transmitting genetic material from and to other species, including phylogenetically distant organisms. Indeed Reva and co-authors, through WGS, analyzed the GI distribution and phylogeny in several mycobacterial species, including MTB and other NTM. They observed a frequent exchange of genes especially in *M. avium*, which was the most promiscuous among the analyzed mycobacteria (Reva et al. 2015). Our study showed also evidences of HGT, by comparing the DNA sequences of the hypervariable GI with sequences of other mycobacteria. DNA similarities were found between the hvGI from MAH and sequences of

M. intracellulare, *M. marinum* and *M. canettii*, a member of the MTBC (Fabre et al. 2010; Supply et al. 2013). This evidence suggests once again that MAH can acquire or donate genetic material, also from/to highly pathogenic mycobacteria.

The acquisition of mobile genetic element via HGT is particularly important for the evolution of mycobacteria: it has been hypothesized that harmless mycobacteria present in the environment acquired genetic elements from other bacteria present in their surroundings and thus become adapted to and pathogenic for humans (Arnold 2007; Banuls et al. 2015; Behr 2013; Bottai et al. 2014; Coros et al. 2008; Gutierrez et al. 2009). This concept is explained by the model of MTB evolution. MTB is supposed to derive from an ancient species, close to the *M. canettii*, that later acquired GIs from alfa- and gamma- proteobacteria (such as *Pseudomonas*, *Burkholderia*) and thus became adapted to humans (Becq et al. 2007; Kinsella et al. 2003; Reva et al. 2015; Rosas-Magallanes et al. 2006). The transfer of GIs and other genetic material might have increased the adaptation of the recipient to cope with several possible stress conditions. One of the possible stress conditions was the resistance to ingestion by protozoa, which are spread for example in soil. Acquisition of genetic material by environmental bacteria might have provided to them genes conferring resistance to ingestion and/or degradation by protozoa, and therefore it is hypothesized that in this way the mycobacteria learned to survive within human macrophages (Jang et al. 2008). The ability to survive within protozoa such as *Acanthamoeba* was also demonstrated for *M. avium* (Cirillo et al. 1997; Drancourt et al. 2007; Mura et al. 2006; Whan et al. 2006). Adaptation of MTB to humans (and animals) is supposed to have taken part along with loss of genetic material, while *M. avium* did not undergo relevant loss of genetic material, why it is adapted to a wider range of environmental and clinical conditions (Ignatov et al. 2012).

Our results imply that more awareness on genetic diversity and more studies on genomic surveillance of GIs or other mobile genetic elements in MAH and other NTM are needed, because the shuffling of these elements may generate new variants potentially able to cause infections or outbreaks of public health relevance.

4.2 Implications of the metabolic studies on MAH

Our study contributes to understand MAH at phenotypic-metabolic level. For the first time we described and compared the range of metabolic substrates that can be utilized by MAH isolates from clinical and from environmental sources. The PM method is a high-throughput method for the rapid screening of metabolic substrates used by bacteria. We found that our MAH isolates mostly used fatty acids as energy sources. By clustering the MAH isolates based on their metabolic substrates utilization, we found that clinical and environmental isolates represent two distinct clusters. The major difference between clinical and environmental MAH isolates consisted in the usage of the two substrates propionic acid and butyric acid, which are stronger metabolized by environmental than clinical isolates. Interestingly, we did not observe this clustering when we analyzed the maximum common genome of all our MAH isolates. This means that although MAH isolates from clinical and environmental origin do not cluster at this genetic level, they differed at metabolic level. This might suggest that bacteria sharing the same genetic information are able to regulate differently their metabolism depending on the conditions that they have to face in their habitat (Archuleta et al. 2005; Honer zu Bentrup & Russell 2001; Marri et al. 2006). Moreover, it has to be considered that the metabolism is influenced not only by the gene composition, but also by epigenetic effects (such as DNA methylation) influencing the gene expression (Kathirvel & Mahadevan 2016). This reinforces the statement that the accessory genome should be analyzed to understand its role in bacterial evolution and survival. Other studies also showed that in bacteria the use of fatty acids plays a role in adaptation to different environmental conditions. For example, de Sarrau and co-authors investigated the growth, the metabolism and the bacterial cell wall composition under anaerobiosis and low temperature of *Bacillus cereus*. They observed a reduced growth in these conditions and a modified pattern of fatty acids production, which was responsible for an increase of the cell wall permeability, allowing bacterial survival (de Sarrau et al. 2012; de Sarrau et al. 2013). Similar researches have been done by Diomande and co-authors, which showed that several *Bacillus* species modify their fatty acids pattern in response to different media compositions, temperatures or pH conditions (Diomande et al. 2015).

We also compared the substrate utilization between MAH and MTB (Khatri et al. 2013; Lofthouse et al. 2013). Interestingly our MAH isolates utilized substantially less substrates when compared to MTB. However, there is a need of harmonization of the PM data analysis algorithms, in order to adjust methodology for determining positivity of a substrate or setting of positivity thresholds for achieving comparable and reproducible results. A total of nine substrates differentiate MAH from MTB (specifically propionic acid, D-psicose, L-alaninamide, L-histidine, γ -hydroxy-Butyric Acid, β -Methyl-D-Galactoside, Sebacic Acid, D,L- α -Amino-Caprylic Acid and Carbamyl Phosphate). More detailed knowledge on substrate utilization of mycobacteria might improve culture and identification techniques.

More indications are coming about the importance of metabolism for mycobacterial pathogenesis. For example, researchers determined that MTB and *M. avium* use fatty acids and cholesterol of the host-cells as energy source during infections to persist within macrophages (Caire-Brandli et al. 2014; Daniel et al. 2011). During infection mycobacteria switch from the usage of own metabolic substrates to the usage of host-derived fatty acids (Schnappinger et al. 2003). Host lipids represent the primary carbon source during the first phase of infections (Caire-Brandli et al. 2014; Daniel et al. 2011). Another example is the usage of asparagine by MTB during host infection both as nitrogen source and for resistance towards pH stress mediated by production of ammonia through asparagine hydrolyzation (Gouzy et al. 2014a; Gouzy et al. 2014b).

Understanding how bacteria utilize own or host-derived substrates during host-pathogen interaction might open new therapeutic options for treatment of bacterial infections. We therefore encourage phenotypic testing of microbial isolates from different ecological niches in order to identify pathogen-specific key metabolites or pathways that can be used as targets for the development of new drugs.

5. Conclusions and outlook

The exploration of the biology of MAH is important because (i) it is a pathogen adapted to a wide range of environments and conditions, (ii) it is an emerging opportunistic human pathogen and (iii) it is prone to transfer genetic material such as GIs to other species. Our study highlighted the high degree of the genetic diversity of the newly identified hvGI of MAH. Preliminary functional studies suggest that the hvGI might have an impact on the adaptation to certain types of selective pressure and consequently on evolution of MAH. Further studies on the functions of genes present in hvGI may contribute to understanding of its role for evolution and pathogenesis of MAH. Mobile elements shaping the accessory genome of mycobacteria should be given more attention since the transfer of these elements drives bacterial evolution and adaptation.

Our study suggests that MAH isolates might adapt their metabolism to the different conditions they encounter during their life. The study of the role of metabolism in bacterial virulence is a relatively new but expanding field (Lundgren et al. 2015; Njoroge et al. 2012; Santic & Abu Kwaik 2013; Schoen et al. 2014).

Important questions to answer in the future:

- How does MAH regulate the mobility and the transfer the hvGI?
- What is the function of the genes, especially genes annotated as hypothetical proteins, present in the hvGI?
- Which metabolic substrates are used by MAH during human infection?

The identification of new GIs and new genes, and their function in colonization or host-pathogen interaction might help defining novel targets for the development of new antimicrobials or develop specific vaccines (Ahmed et al. 2008; Jang et al. 2008; Turenne et al. 2007). Functional studies, for example generating gene-specific knockout mutants, might clarify the role of the hvGIs and its genes. The screening of the utilization of metabolic substrates suggests specific substrates to be further investigated for their importance in bacteria.

6. Summary

Mycobacterium avium subsp. *hominissuis* (MAH) is an opportunistic human pathogen that can cause lymphadenitis, pulmonary infections and disseminated infections. In addition, MAH is widespread in the environment, since it has been isolated from dust, soil and water. MAH isolates are characterized by high genetic diversity. Recently a new genomic island (GI), later re-named as hypervariable GI (hvGI), was identified in few MAH isolates, contributing to the genetic diversity of the MAH isolates.

It is not known whether clinical or environmental MAH isolates differ from each other. In this thesis we analyzed 41 MAH isolates from Germany isolated from clinical (n=20) and from environmental (n=21) source. First we identified and characterized the hvGI in all isolates, in order to see if the hvGI differentiates clinical and environmental MAH isolates. Then we investigated the function of the *mmpL10* gene of the hvGI in order to get insights on the function of one of the genes present in the hvGI. We identified the hvGI in 39/41 isolates. We found high genetic diversity in the hvGI: eight types of hvGI have been identified (size 6.2-73.3 kb). Two types shared more than 80% sequence identity with *Mycobacterium canettii* responsible for Tuberculosis. We identified 253 different genes in all hvGIs, among which the previously documented virulence genes *mmpL10* and *mce*. Functional studies on the *mmpL10* gene suggest its involvement in antibiotic-resistance and in sugar transport. Our study expands the knowledge on MAH genome plasticity. The diversity of the hvGIs and the similarities with other mycobacteria suggests cross-species transfer. The shuffling of virulence/drug-resistance genes via the hvGIs may generate new variants able to cause new outbreaks.

In addition, we analyzed ten MAH isolates at metabolic level using the BIOLOG Phenotype Microarray method, in order to see whether clinical or environmental MAH isolates show any metabolic differences. We found that MAH metabolized mostly fatty acids such as Tween, caproic, butyric and propionic acid. Clinical MAH metabolized stronger butyric ($p = 0.0209$) and propionic acid ($p = 0.00307$) compared environmental MAH. Our study provides new insight into the metabolism of MAH. Understanding how bacteria utilize substrates during infection might support the development of strategies to fight such infections.

7. Zusammenfassung

***Mycobacterium avium* subsp. *hominissuis*: die Bedeutung der genetischen und metabolischen Diversität**

Mycobacterium avium subsp. *hominissuis* (MAH) ist ein opportunistischer Krankheitserreger des Menschen. MAH Isolate können Lymphadenitis, Lungeninfektionen und disseminierte Infektionen verursachen. MAH ist auch in der Umwelt weit verbreitet und wurde aus Staub, Erde und Wasser isoliert. Die Subspezies MAH ist durch eine hohe genetische Variabilität gekennzeichnet. Vor kurzem wurde eine neue genomische Insel (GI), benannt als hypervariable GI (hvGI) identifiziert. Diese hvGI wurde in der vorliegenden Arbeit untersucht.

Bisher ist nicht bekannt, ob oder wodurch sich klinische und Umweltisolate von MAH unterscheiden. In dieser Doktorarbeit wurden MAH-Isolate aus Deutschland aus klinischen Proben (n = 20) und aus der Umwelt (n = 21) vergleichend untersucht. Zuerst haben wir die hvGI in allen Isolaten identifiziert und charakterisiert, um zu sehen, ob Unterschiede im Vorkommen der hvGI zwischen klinischen Isolaten und Umweltisolaten auftreten. Wir haben die hvGI in 39/41 MAH Isolaten identifiziert. Sie weist eine hohe genetische Variabilität auf: Acht Typen von hvGI wurden identifiziert (Größe 6,2 bis 73,3 kb). Eine unterschiedliche Verteilung der verschiedenen Typen der hvGI in Abhängigkeit vom Isolationsort konnte dabei nicht festgestellt werden. Zwei hvGI-Varianten teilen mehr als 80% Sequenzidentität mit *Mycobacterium canettii*, einem der Verursacher der Tuberkulose. In allen hvGIs zusammen wurden 253 verschiedene Gene identifiziert, darunter die dokumentierten Virulenz-assoziierten Gene *mmpL10* und *mce*. Um Erkenntnisse über die Funktion von Genen der hvGI zu bekommen, haben wir die Expressionsstärke des *mmpL10* Gens der hvGI in einem Isolat durch genetische Methoden herabreguliert und die Auswirkungen auf den Phänotyp untersucht. Die Ergebnisse deuten auf eine Beteiligung von MmpL10 an der Resistenz gegenüber bestimmten Antibiotikahin und auf eine Rolle beim Transport bestimmter Zucker. Unsere Studie erweitert das Wissen über die Genomplastizität von MAH. Die Variabilität der hvGI und die Sequenzhomologien mit der DNA anderer Mykobakterien-Spezies weisen auf einen artübergreifenden Transfer hin. Die Übertragung von Virulenz- /

Antibiotikaresistenz-Genen durch die hvGIs kann neue Varianten von *Mycobacterium*-Arten erzeugen, die neue Ausbrüche verursachen könnten.

Darüber hinaus haben wir zehn MAH Isolate auf metabolischer Ebene mit der BIOLOG Phänotyp Microarray-Methode analysiert, um zu untersuchen, ob klinische und Umweltisolate Unterschiede in ihrem Stoffwechsel zeigen. Es zeigte sich, dass MAH hauptsächlich Fettsäuren wie Tween, Capron-, Butter- und Propionsäure metabolisiert.

Umwelt MAH benutzten im Vergleich zu Klinische stärker Buttersäure und Propionsäure. Unsere Studie liefert somit neue Einblicke in den Stoffwechsel von MAH. Ein besseres Verständnis der Verwendung von Substraten durch Bakterien während der Infektion kann die Entwicklung von Strategien zur Bekämpfung dieser Infektionen unterstützen.

8. References

2006. In: Knobler S, Mahmoud A, Lemon S, and Pray L, eds. *The Impact of Globalization on Infectious Disease Emergence and Control: Exploring the Consequences and Opportunities: Workshop Summary*. Washington (DC).
2012. Global leprosy situation, 2012. *Wkly Epidemiol Rec* 87:317-328.
- Adjemian J, Olivier KN, Seitz AE, Holland SM, and Prevots DR. 2012. Prevalence of nontuberculous mycobacterial lung disease in U.S. Medicare beneficiaries. *Am J Respir Crit Care Med* 185:881-886. 10.1164/rccm.201111-2016OC
- Ahmed N, Dobrindt U, Hacker J, and Hasnain SE. 2008. Genomic fluidity and pathogenic bacteria: applications in diagnostics, epidemiology and intervention. *Nat Rev Microbiol* 6:387-394. 10.1038/nrmicro1889
- Akhter Y, Ehebauer MT, Mukhopadhyay S, and Hasnain SE. 2012. The PE/PPE multigene family codes for virulence factors and is a possible source of mycobacterial antigenic variation: perhaps more? *Biochimie* 94:110-116. 10.1016/j.biochi.2011.09.026
- Alland D, Lacher DW, Hazbon MH, Motiwala AS, Qi W, Fleischmann RD, and Whittam TS. 2007. Role of large sequence polymorphisms (LSPs) in generating genomic diversity among clinical isolates of Mycobacterium tuberculosis and the utility of LSPs in phylogenetic analysis. *J Clin Microbiol* 45:39-46. 10.1128/JCM.02483-05
- Alvarez J, Garcia IG, Aranaz A, Bezos J, Romero B, de Juan L, Mateos A, Gomez-Mampaso E, and Dominguez L. 2008. Genetic diversity of Mycobacterium avium isolates recovered from clinical samples and from the environment: molecular characterization for diagnostic purposes. *J Clin Microbiol* 46:1246-1251. 10.1128/JCM.01621-07
- Andries K, Villellas C, Coeck N, Thys K, Gevers T, Vranckx L, Lounis N, de Jong BC, and Koul A. 2014. Acquired resistance of Mycobacterium tuberculosis to bedaquiline. *PLoS One* 9:e102135. 10.1371/journal.pone.0102135
- Archuleta RJ, Yvonne Hoppes P, and Primm TP. 2005. Mycobacterium avium enters a state of metabolic dormancy in response to starvation. *Tuberculosis (Edinb)* 85:147-158. 10.1016/j.tube.2004.09.002
- Armada SP, Farto R, Perez MJ, and Nieto TP. 2003. Effect of temperature, salinity and nutrient content on the survival responses of Vibrio splendidus biotype I. *Microbiology* 149:369-375. 10.1099/mic.0.25574-0
- Arnold C. 2007. Molecular evolution of Mycobacterium tuberculosis. *Clin Microbiol Infect* 13:120-128. 10.1111/j.1469-0691.2006.01637.x
- Arruda S, Bomfim G, Knights R, Huima-Byron T, and Riley LW. 1993. Cloning of an M. tuberculosis DNA fragment associated with entry and survival inside cells. *Science* 261:1454-1457.
- Bailo R, Bhatt A, and Ainsa JA. 2015. Lipid transport in Mycobacterium tuberculosis and its implications in virulence and drug development. *Biochem Pharmacol* 96:159-167. 10.1016/j.bcp.2015.05.001
- Banuls AL, Sanou A, Anh NT, and Godreuil S. 2015. Mycobacterium tuberculosis: ecology and evolution of a human bacterium. *J Med Microbiol* 64:1261-1269. 10.1099/jmm.0.000171
- Bartpho T, Wongsurawat T, Wongratanacheewin S, Talaat AM, Karoonuthaisiri N, and Serm Swan RW. 2012. Genomic islands as a marker to differentiate between clinical and environmental Burkholderia pseudomallei. *PLoS One* 7:e37762. 10.1371/journal.pone.0037762
- Becq J, Gutierrez MC, Rosas-Magallanes V, Rauzier J, Gicquel B, Neyrolles O, and Deschavanne P. 2007. Contribution of horizontally acquired genomic islands to the evolution of the tubercle bacilli. *Mol Biol Evol* 24:1861-1871. 10.1093/molbev/msm111

- Behr MA. 2013. Evolution of *Mycobacterium tuberculosis*. *Adv Exp Med Biol* 783:81-91. 10.1007/978-1-4614-6111-1_4
- Belardinelli JM, Larrouy-Maumus G, Jones V, Sorio de Carvalho LP, McNeil MR, and Jackson M. 2014. Biosynthesis and translocation of unsulfated acyltrehaloses in *Mycobacterium tuberculosis*. *J Biol Chem* 289:27952-27965. 10.1074/jbc.M114.581199
- Bellanger X, Payot S, Leblond-Bourget N, and Guedon G. 2014. Conjugative and mobilizable genomic islands in bacteria: evolution and diversity. *FEMS Microbiol Rev* 38:720-760. 10.1111/1574-6976.12058
- Blanc-Potard AB, and Lafay B. 2003. MgtC as a horizontally-acquired virulence factor of intracellular bacterial pathogens: evidence from molecular phylogeny and comparative genomics. *J Mol Evol* 57:479-486. 10.1007/s00239-003-2496-4
- Bochner BR, Gadzinski P, and Panomitros E. 2001. Phenotype microarrays for high-throughput phenotypic testing and assay of gene function. *Genome Res* 11:1246-1255. 10.1101/gr.186501
- Bottai D, Stinear TP, Supply P, and Brosch R. 2014. Mycobacterial Pathogenomics and Evolution. *Microbiol Spectr* 2:MGM2-0025-2013. 10.1128/microbiolspec.MGM2-0025-2013
- Boyd EF, and Brussow H. 2002. Common themes among bacteriophage-encoded virulence factors and diversity among the bacteriophages involved. *Trends Microbiol* 10:521-529.
- Breda L, de Michele G, Nozzi M, De Sanctis S, Di Marzio D, and Chiarelli F. 2009. Non-tuberculous mycobacterial osteomyelitis: an unusual cause of hip pain in immunocompetent children. *Rheumatol Int* 29:1487-1489. 10.1007/s00296-009-0844-4
- Brennan PJ, and Nikaido H. 1995. The envelope of mycobacteria. *Annu Rev Biochem* 64:29-63. 10.1146/annurev.bi.64.070195.000333
- Brosch R, Pym AS, Gordon SV, and Cole ST. 2001. The evolution of mycobacterial pathogenicity: clues from comparative genomics. *Trends Microbiol* 9:452-458.
- Brown BA, Springer B, Steingrube VA, Wilson RW, Pfyffer GE, Garcia MJ, Menendez MC, Rodriguez-Salgado B, Jost KC, Jr., Chiu SH, Onyi GO, Bottger EC, and Wallace RJ, Jr. 1999. *Mycobacterium wolinskyi* sp. nov. and *Mycobacterium goodii* sp. nov., two new rapidly growing species related to *Mycobacterium smegmatis* and associated with human wound infections: a cooperative study from the International Working Group on Mycobacterial Taxonomy. *Int J Syst Bacteriol* 49 Pt 4:1493-1511. 10.1099/00207713-49-4-1493
- Bryant JM, Grogono DM, Greaves D, Foweraker J, Roddick I, Inns T, Reacher M, Haworth CS, Curran MD, Harris SR, Peacock SJ, Parkhill J, and Floto RA. 2013. Whole-genome sequencing to identify transmission of *Mycobacterium abscessus* between patients with cystic fibrosis: a retrospective cohort study. *Lancet* 381:1551-1560. 10.1016/S0140-6736(13)60632-7
- Caire-Brandli I, Papadopoulos A, Malaga W, Marais D, Canaan S, Thilo L, and de Chastellier C. 2014. Reversible lipid accumulation and associated division arrest of *Mycobacterium avium* in lipoprotein-induced foamy macrophages may resemble key events during latency and reactivation of tuberculosis. *Infect Immun* 82:476-490. 10.1128/IAI.01196-13
- Che D, Hasan MS, and Chen B. 2014. Identifying pathogenicity islands in bacterial pathogenomics using computational approaches. *Pathogens* 3:36-56. 10.3390/pathogens3010036

- Chiers K, Deschaght P, De Baere T, Dabrowski S, Kotlowski R, De Clercq D, Ducatelle R, and Vaneechoutte M. 2012. Isolation and identification of *Mycobacterium avium* subspecies *silvaticum* from a horse. *Comp Immunol Microbiol Infect Dis* 35:303-307. 10.1016/j.cimid.2012.01.011
- Cirillo JD, Falkow S, Tompkins LS, and Bermudez LE. 1997. Interaction of *Mycobacterium avium* with environmental amoebae enhances virulence. *Infect Immun* 65:3759-3767.
- Cook GM, Berney M, Gebhard S, Heinemann M, Cox RA, Danilchanka O, and Niederweis M. 2009. Physiology of mycobacteria. *Adv Microb Physiol* 55:81-182, 318-189. 10.1016/S0065-2911(09)05502-7
- Coros A, DeConno E, and Derbyshire KM. 2008. IS6110, a *Mycobacterium tuberculosis* complex-specific insertion sequence, is also present in the genome of *Mycobacterium smegmatis*, suggestive of lateral gene transfer among mycobacterial species. *J Bacteriol* 190:3408-3410. 10.1128/JB.00009-08
- Curras M, Magarinos B, Toranzo AE, and Romalde JL. 2002. Dormancy as a survival strategy of the fish pathogen *Streptococcus parauberis* in the marine environment. *Dis Aquat Organ* 52:129-136. 10.3354/dao052129
- Dailoux M, Albert M, Laurain C, Andolfatto S, Lozniewski A, Hartemann P, and Mathieu L. 2003. *Mycobacterium xenopi* and drinking water biofilms. *Appl Environ Microbiol* 69:6946-6948.
- Danelishvili L, Wu M, Stang B, Harriff M, Cirillo SL, Cirillo JD, Bildfell R, Arbogast B, and Bermudez LE. 2007. Identification of *Mycobacterium avium* pathogenicity island important for macrophage and amoeba infection. *Proc Natl Acad Sci U S A* 104:11038-11043. 10.1073/pnas.0610746104
- Daniel J, Maamar H, Deb C, Sirakova TD, and Kolattukudy PE. 2011. *Mycobacterium tuberculosis* uses host triacylglycerol to accumulate lipid droplets and acquires a dormancy-like phenotype in lipid-loaded macrophages. *PLoS Pathog* 7:e1002093. 10.1371/journal.ppat.1002093
- Davis WC. 2015. On deaf ears, *Mycobacterium avium* paratuberculosis in pathogenesis Crohn's and other diseases. *World J Gastroenterol* 21:13411-13417. 10.3748/wjg.v21.i48.13411
- De Groote MA, Pace NR, Fulton K, and Falkinham JO, 3rd. 2006. Relationships between *Mycobacterium* isolates from patients with pulmonary mycobacterial infection and potting soils. *Appl Environ Microbiol* 72:7602-7606. 10.1128/AEM.00930-06
- de Sarrau B, Clavel T, Clerte C, Carlin F, Ginies C, and Nguyen-The C. 2012. Influence of anaerobiosis and low temperature on *Bacillus cereus* growth, metabolism, and membrane properties. *Appl Environ Microbiol* 78:1715-1723. 10.1128/AEM.06410-11
- de Sarrau B, Clavel T, Zwickel N, Despres J, Dupont S, Beney L, Tourdot-Marechal R, and Nguyen-The C. 2013. Unsaturated fatty acids from food and in the growth medium improve growth of *Bacillus cereus* under cold and anaerobic conditions. *Food Microbiol* 36:113-122. 10.1016/j.fm.2013.04.008
- Diomande SE, Nguyen-The C, Guinebretiere MH, Broussolle V, and Brillard J. 2015. Role of fatty acids in *Bacillus* environmental adaptation. *Front Microbiol* 6:813. 10.3389/fmicb.2015.00813
- Dobrindt U, Hochhut B, Hentschel U, and Hacker J. 2004. Genomic islands in pathogenic and environmental microorganisms. *Nat Rev Microbiol* 2:414-424. 10.1038/nrmicro884
- Domenech P, Reed MB, and Barry CE, 3rd. 2005. Contribution of the *Mycobacterium tuberculosis* MmpL protein family to virulence and drug resistance. *Infect Immun* 73:3492-3501. 10.1128/IAI.73.6.3492-3501.2005
- Doolittle RF. 2002. Biodiversity: microbial genomes multiply. *Nature* 416:697-700. 10.1038/416697a

- Drancourt M, Adekambi T, and Raoult D. 2007. Interactions between *Mycobacterium xenopi*, amoeba and human cells. *J Hosp Infect* 65:138-142. 10.1016/j.jhin.2006.10.006
- Dye C. 2014. After 2015: infectious diseases in a new era of health and development. *Philos Trans R Soc Lond B Biol Sci* 369:20130426. 10.1098/rstb.2013.0426
- Eckelt E, Jarek M, Fromke C, Meens J, and Goethe R. 2014. Identification of a lineage specific zinc responsive genomic island in *Mycobacterium avium* ssp. paratuberculosis. *BMC Genomics* 15:1076. 10.1186/1471-2164-15-1076
- El-Shazly S, Ahmad S, Mustafa AS, Al-Attiyah R, and Krajci D. 2007. Internalization by HeLa cells of latex beads coated with mammalian cell entry (Mce) proteins encoded by the mce3 operon of *Mycobacterium tuberculosis*. *J Med Microbiol* 56:1145-1151. 10.1099/jmm.0.47095-0
- Esther CR, Jr., Esserman DA, Gilligan P, Kerr A, and Noone PG. 2010. Chronic *Mycobacterium abscessus* infection and lung function decline in cystic fibrosis. *J Cyst Fibros* 9:117-123. 10.1016/j.jcf.2009.12.001
- Fabre M, Hauck Y, Soler C, Koeck JL, van Ingen J, van Soolingen D, Vergnaud G, and Pourcel C. 2010. Molecular characteristics of "*Mycobacterium canettii*" the smooth *Mycobacterium tuberculosis* bacilli. *Infect Genet Evol* 10:1165-1173. 10.1016/j.meegid.2010.07.016
- Fair RJ, and Tor Y. 2014. Antibiotics and bacterial resistance in the 21st century. *Perspect Medicin Chem* 6:25-64. 10.4137/PMC.S14459
- Falkinham JO. 2010. Impact of human activities on the ecology of nontuberculous mycobacteria. *Future Microbiol* 5:951-960. 10.2217/fmb.10.53
- Falkinham JO, 3rd. 2009. Surrounded by mycobacteria: nontuberculous mycobacteria in the human environment. *J Appl Microbiol* 107:356-367. 10.1111/j.1365-2672.2009.04161.x
- Falkinham JO, 3rd. 2013. Reducing human exposure to *Mycobacterium avium*. *Ann Am Thorac Soc* 10:378-382. 10.1513/AnnalsATS.201301-013FR
- Falkinham JO, 3rd, Iseman MD, de Haas P, and van Soolingen D. 2008. *Mycobacterium avium* in a shower linked to pulmonary disease. *J Water Health* 6:209-213. 10.2166/wh.2008.032
- Falkinham JO, 3rd, Norton CD, and LeChevallier MW. 2001. Factors influencing numbers of *Mycobacterium avium*, *Mycobacterium intracellulare*, and other *Mycobacteria* in drinking water distribution systems. *Appl Environ Microbiol* 67:1225-1231. 10.1128/AEM.67.3.1225-1231.2001
- Faria S, Joao I, and Jordao L. 2015. General Overview on Nontuberculous Mycobacteria, Biofilms, and Human Infection. *J Pathog* 2015:809014. 10.1155/2015/809014
- Forrellad MA, Klepp LI, Gioffre A, Sabio y Garcia J, Morbidoni HR, de la Paz Santangelo M, Cataldi AA, and Bigi F. 2013. Virulence factors of the *Mycobacterium tuberculosis* complex. *Virulence* 4:3-66. 10.4161/viru.22329
- Fowler J, and Mahlen SD. 2014. Localized cutaneous infections in immunocompetent individuals due to rapidly growing mycobacteria. *Arch Pathol Lab Med* 138:1106-1109. 10.5858/arpa.2012-0203-RS
- Franca RF, da Silva CC, and De Paula SO. 2013. Recent advances in molecular medicine techniques for the diagnosis, prevention, and control of infectious diseases. *Eur J Clin Microbiol Infect Dis* 32:723-728. 10.1007/s10096-013-1813-0
- Franzin FM, and Sircili MP. 2015. Locus of enterocyte effacement: a pathogenicity island involved in the virulence of enteropathogenic and enterohemorrhagic *Escherichia coli* subjected to a complex network of gene regulation. *Biomed Res Int* 2015:534738. 10.1155/2015/534738

- Fricke WF, Wright MS, Lindell AH, Harkins DM, Baker-Austin C, Ravel J, and Stepanauskas R. 2008. Insights into the environmental resistance gene pool from the genome sequence of the multidrug-resistant environmental isolate *Escherichia coli* SMS-3-5. *J Bacteriol* 190:6779-6794. 10.1128/JB.00661-08
- Gopinath K, and Singh S. 2010. Non-tuberculous mycobacteria in TB-endemic countries: are we neglecting the danger? *PLoS Negl Trop Dis* 4:e615. 10.1371/journal.pntd.0000615
- Gouzy A, Larrouy-Maumus G, Bottai D, Levillain F, Dumas A, Wallach JB, Caire-Brandli I, de Chastellier C, Wu TD, Poincloux R, Brosch R, Guerquin-Kern JL, Schnappinger D, Sorio de Carvalho LP, Poquet Y, and Neyrolles O. 2014a. Mycobacterium tuberculosis exploits asparagine to assimilate nitrogen and resist acid stress during infection. *PLoS Pathog* 10:e1003928. 10.1371/journal.ppat.1003928
- Gouzy A, Poquet Y, and Neyrolles O. 2014b. Nitrogen metabolism in Mycobacterium tuberculosis physiology and virulence. *Nat Rev Microbiol* 12:729-737. 10.1038/nrmicro3349
- Grange JM. 1982. Koch's Tubercle Bacillus - a centenary reappraisal. *Zentralbl Bakteriol Mikrobiol Hyg A* 251:297-307.
- Gushulak BD, and MacPherson DW. 2004. Globalization of infectious diseases: the impact of migration. *Clin Infect Dis* 38:1742-1748. 10.1086/421268
- Gutierrez MC, Supply P, and Brosch R. 2009. Pathogenomics of mycobacteria. *Genome Dyn* 6:198-210. 10.1159/000235772
- Guttmacher AE, and Collins FS. 2003. Welcome to the genomic era. *N Engl J Med* 349:996-998. 10.1056/NEJMe038132
- Haller S, Holler C, Jacobshagen A, Hamouda O, Abu Sin M, Monnet DL, Plachouras D, and Eckmanns T. 2016. Contamination during production of heater-cooler units by Mycobacterium chimaera potential cause for invasive cardiovascular infections: results of an outbreak investigation in Germany, April 2015 to February 2016. *Euro Surveill* 21. 10.2807/1560-7917.ES.2016.21.17.30215
- Harris KA, Kenna DT, Blauwendraat C, Hartley JC, Turton JF, Aurora P, and Dixon GL. 2012. Molecular fingerprinting of Mycobacterium abscessus strains in a cohort of pediatric cystic fibrosis patients. *J Clin Microbiol* 50:1758-1761. 10.1128/JCM.00155-12
- Hasnain SE, Friedrich B, Mettenleiter T, Dobrindt U, and Hacker J. 2012. Climate change and infectious diseases--impact of global warming and climate change on infectious diseases: myth or reality? *Int J Med Microbiol* 302:1-3. 10.1016/j.ijmm.2011.09.011
- Hazra R, Robson CD, Perez-Atayde AR, and Husson RN. 1999. Lymphadenitis due to nontuberculous mycobacteria in children: presentation and response to therapy. *Clin Infect Dis* 28:123-129. 10.1086/515091
- Hille F, and Charpentier E. 2016. CRISPR-Cas: biology, mechanisms and relevance. *Philos Trans R Soc Lond B Biol Sci* 371. 10.1098/rstb.2015.0496
- Hoefsloot W, van Ingen J, Andrejak C, Angeby K, Bauriaud R, Bemer P, Beylis N, Boeree MJ, Cacho J, Chihota V, Chimara E, Churchyard G, Cias R, Daza R, Daley CL, Dekhuijzen PN, Domingo D, Drobniowski F, Esteban J, Fauville-Dufaux M, Folkvardsen DB, Gibbons N, Gomez-Mampaso E, Gonzalez R, Hoffmann H, Hsueh PR, Indra A, Jagielski T, Jamieson F, Jankovic M, Jong E, Keane J, Koh WJ, Lange B, Leao S, Macedo R, Mannsaker T, Marras TK, Maugein J, Milburn HJ, Mlinko T, Morcillo N, Morimoto K, Papaventsis D, Palenque E, Paez-Pena M, Piersimoni C, Polanova M, Rastogi N, Richter E, Ruiz-Serrano MJ, Silva A, da Silva MP, Simsek H, van Soolingen D, Szabo N, Thomson R, Tortola Fernandez T, Tortoli E, Totten SE, Tyrrell G, Vasankari T, Villar M, Walkiewicz R, Winthrop KL, Wagner D, and Nontuberculous Mycobacteria Network European Trials G. 2013. The geographic

- diversity of nontuberculous mycobacteria isolated from pulmonary samples: an NTM-NET collaborative study. *Eur Respir J* 42:1604-1613. 10.1183/09031936.00149212
- Hoffmann C, Leis A, Niederweis M, Plitzko JM, and Engelhardt H. 2008. Disclosure of the mycobacterial outer membrane: cryo-electron tomography and vitreous sections reveal the lipid bilayer structure. *Proc Natl Acad Sci U S A* 105:3963-3967. 10.1073/pnas.0709530105
- Honer zu Bentrup K, and Russell DG. 2001. Mycobacterial persistence: adaptation to a changing environment. *Trends Microbiol* 9:597-605.
- Horan KL, Freeman R, Weigel K, Semret M, Pfaller S, Covert TC, van Soolingen D, Leao SC, Behr MA, and Cangelosi GA. 2006. Isolation of the genome sequence strain *Mycobacterium avium* 104 from multiple patients over a 17-year period. *J Clin Microbiol* 44:783-789. 10.1128/JCM.44.3.783-789.2006
- Huang WC, Chiou CS, Chen JH, and Shen GH. 2010. Molecular epidemiology of *Mycobacterium abscessus* infections in a subtropical chronic ventilatory setting. *J Med Microbiol* 59:1203-1211. 10.1099/jmm.0.020586-0
- Ignatov D, Kondratieva E, Azhikina T, and Apt A. 2012. *Mycobacterium avium*-triggered diseases: pathogenomics. *Cell Microbiol* 14:808-818. 10.1111/j.1462-5822.2012.01776.x
- Inagaki T, Nishimori K, Yagi T, Ichikawa K, Moriyama M, Nakagawa T, Shibayama T, Uchiya K, Nikai T, and Ogawa K. 2009. Comparison of a variable-number tandem-repeat (VNTR) method for typing *Mycobacterium avium* with mycobacterial interspersed repetitive-unit-VNTR and IS1245 restriction fragment length polymorphism typing. *J Clin Microbiol* 47:2156-2164. 10.1128/JCM.02373-08
- Inderlied CB, Kemper CA, and Bermudez LE. 1993. The *Mycobacterium avium* complex. *Clin Microbiol Rev* 6:266-310.
- Ito T, Kuwahara-Arai K, Katayama Y, Uehara Y, Han X, Kondo Y, and Hiramatsu K. 2014. Staphylococcal Cassette Chromosome mec (SCCmec) analysis of MRSA. *Methods Mol Biol* 1085:131-148. 10.1007/978-1-62703-664-1_8
- Iwamoto T, Nakajima C, Nishiuchi Y, Kato T, Yoshida S, Nakanishi N, Tamaru A, Tamura Y, Suzuki Y, and Nasu M. 2012. Genetic diversity of *Mycobacterium avium* subsp. *hominissuis* strains isolated from humans, pigs, and human living environment. *Infect Genet Evol* 12:846-852. 10.1016/j.meegid.2011.06.018
- Jang J, Becq J, Gicquel B, Deschavanne P, and Neyrolles O. 2008. Horizontally acquired genomic islands in the tubercle bacilli. *Trends Microbiol* 16:303-308. 10.1016/j.tim.2008.04.005
- Jarlier V, and Nikaido H. 1994. Mycobacterial cell wall: structure and role in natural resistance to antibiotics. *FEMS Microbiol Lett* 123:11-18.
- Jeffares DC, Tomiczek B, Sojo V, and dos Reis M. 2015. A beginners guide to estimating the non-synonymous to synonymous rate ratio of all protein-coding genes in a genome. *Methods Mol Biol* 1201:65-90. 10.1007/978-1-4939-1438-8_4
- Juhas M, van der Meer JR, Gaillard M, Harding RM, Hood DW, and Crook DW. 2009. Genomic islands: tools of bacterial horizontal gene transfer and evolution. *FEMS Microbiol Rev* 33:376-393. 10.1111/j.1574-6976.2008.00136.x
- Jung JY, Madan-Lala R, Georgieva M, Rengarajan J, Sohaskey CD, Bange FC, and Robinson CM. 2013. The intracellular environment of human macrophages that produce nitric oxide promotes growth of mycobacteria. *Infect Immun* 81:3198-3209. 10.1128/IAI.00611-13
- Kaneda K, Naito S, Imaizumi S, Yano I, Mizuno S, Tomiyasu I, Baba T, Kusunose E, and Kusunose M. 1986. Determination of molecular species composition of C80 or longer-

- chain alpha-mycolic acids in *Mycobacterium* spp. by gas chromatography-mass spectrometry and mass chromatography. *J Clin Microbiol* 24:1060-1070.
- Karakousis PC, Moore RD, and Chaisson RE. 2004. *Mycobacterium avium* complex in patients with HIV infection in the era of highly active antiretroviral therapy. *Lancet Infect Dis* 4:557-565. 10.1016/S1473-3099(04)01130-2
- Kasperbauer SH, and De Groote MA. 2015. The treatment of rapidly growing mycobacterial infections. *Clin Chest Med* 36:67-78. 10.1016/j.ccm.2014.10.004
- Kathirvel M, and Mahadevan S. 2016. The role of epigenetics in tuberculosis infection. *Epigenomics* 8:537-549. 10.2217/epi.16.1
- Khatri B, Fielder M, Jones G, Newell W, Abu-Oun M, and Wheeler PR. 2013. High throughput phenotypic analysis of *Mycobacterium tuberculosis* and *Mycobacterium bovis* strains' metabolism using biolog phenotype microarrays. *PLoS One* 8:e52673. 10.1371/journal.pone.0052673
- Kim CJ, Kim NH, Song KH, Choe PG, Kim ES, Park SW, Kim HB, Kim NJ, Kim EC, Park WB, and Oh MD. 2013. Differentiating rapid- and slow-growing mycobacteria by difference in time to growth detection in liquid media. *Diagn Microbiol Infect Dis* 75:73-76. 10.1016/j.diagmicrobio.2012.09.019
- Kinsella RJ, Fitzpatrick DA, Creevey CJ, and McInerney JO. 2003. Fatty acid biosynthesis in *Mycobacterium tuberculosis*: lateral gene transfer, adaptive evolution, and gene duplication. *Proc Natl Acad Sci U S A* 100:10320-10325. 10.1073/pnas.1737230100
- Koets AP, Eda S, and Sreevatsan S. 2015. The within host dynamics of *Mycobacterium avium* ssp. paratuberculosis infection in cattle: where time and place matter. *Vet Res* 46:61. 10.1186/s13567-015-0185-0
- Kolb J, Hillemann D, Mobius P, Reetz J, Lahiri A, Lewin A, Rusch-Gerdes S, and Richter E. 2014. Genetic characterization of German *Mycobacterium avium* strains isolated from different hosts and specimens by multilocus sequence typing. *Int J Med Microbiol* 304:941-948. 10.1016/j.ijmm.2014.06.001
- Lahiri A, Kneisel J, Kloster I, Kamal E, and Lewin A. 2014a. Abundance of *Mycobacterium avium* ssp. hominissuis in soil and dust in Germany - implications for the infection route. *Lett Appl Microbiol* 59:65-70. 10.1111/lam.12243
- Lahiri A, Sanchini A, Semmler T, Schafer H, and Lewin A. 2014b. Identification and comparative analysis of a genomic island in *Mycobacterium avium* subsp. hominissuis. *FEBS Lett* 588:3906-3911. 10.1016/j.febslet.2014.08.037
- Lambert PA. 2002. Cellular impermeability and uptake of biocides and antibiotics in Gram-positive bacteria and mycobacteria. *J Appl Microbiol* 92 Suppl:46S-54S.
- Land M, Hauser L, Jun SR, Nookaew I, Leuze MR, Ahn TH, Karpinets T, Lund O, Kora G, Wassenaar T, Poudel S, and Ussery DW. 2015. Insights from 20 years of bacterial genome sequencing. *Funct Integr Genomics* 15:141-161. 10.1007/s10142-015-0433-4
- Langille MG, Hsiao WW, and Brinkman FS. 2010. Detecting genomic islands using bioinformatics approaches. *Nat Rev Microbiol* 8:373-382. 10.1038/nrmicro2350
- Lastoria JC, and Abreu MA. 2014. Leprosy: review of the epidemiological, clinical, and etiopathogenic aspects - part 1. *An Bras Dermatol* 89:205-218.
- Le Dantec C, Duguet JP, Montiel A, Dumoutier N, Dubrou S, and Vincent V. 2002. Occurrence of mycobacteria in water treatment lines and in water distribution systems. *Appl Environ Microbiol* 68:5318-5325.
- Lei CW, Zhang AY, Liu BH, Wang HN, Guan ZB, Xu CW, Xia QQ, Cheng H, and Zhang DD. 2014. Molecular characteristics of *Salmonella* genomic island 1 in *Proteus mirabilis* isolates from poultry farms in China. *Antimicrob Agents Chemother* 58:7570-7572. 10.1128/AAC.03992-14

- Levy-Frebault VV, and Portaels F. 1992. Proposed minimal standards for the genus *Mycobacterium* and for description of new slowly growing *Mycobacterium* species. *Int J Syst Bacteriol* 42:315-323. 10.1099/00207713-42-2-315
- Li L, Bannantine JP, Zhang Q, Amonsin A, May BJ, Alt D, Banerji N, Kanjilal S, and Kapur V. 2005a. The complete genome sequence of *Mycobacterium avium* subspecies paratuberculosis. *Proc Natl Acad Sci U S A* 102:12344-12349. 10.1073/pnas.0505662102
- Li Y, Miltner E, Wu M, Petrofsky M, and Bermudez LE. 2005b. A *Mycobacterium avium* PPE gene is associated with the ability of the bacterium to grow in macrophages and virulence in mice. *Cell Microbiol* 7:539-548. 10.1111/j.1462-5822.2004.00484.x
- Liu J, Barry CE, 3rd, Besra GS, and Nikaido H. 1996. Mycolic acid structure determines the fluidity of the mycobacterial cell wall. *J Biol Chem* 271:29545-29551.
- Lofthouse EK, Wheeler PR, Beste DJ, Khatri BL, Wu H, Mendum TA, Kierzek AM, and McFadden J. 2013. Systems-based approaches to probing metabolic variation within the *Mycobacterium tuberculosis* complex. *PLoS One* 8:e75913. 10.1371/journal.pone.0075913
- Lonroth K, Migliori GB, Abubakar I, D'Ambrosio L, de Vries G, Diel R, Douglas P, Falzon D, Gaudreau MA, Goletti D, Gonzalez Ochoa ER, LoBue P, Matteelli A, Njoo H, Solovic I, Story A, Tayeb T, van der Werf MJ, Weil D, Zellweger JP, Abdel Aziz M, Al Lawati MR, Aliberti S, Arrazola de Onate W, Barreira D, Bhatia V, Blasi F, Bloom A, Bruchfeld J, Castelli F, Centis R, Chemtob D, Cirillo DM, Colorado A, Dadu A, Dahle UR, De Paoli L, Dias HM, Duarte R, Fattorini L, Gaga M, Getahun H, Glaziou P, Gogvadze L, Del Granado M, Haas W, Jarvinen A, Kwon GY, Mosca D, Nahid P, Nishikiori N, Noguer I, O'Donnell J, Pace-Asciak A, Pompa MG, Popescu GG, Robalo Cordeiro C, Ronning K, Ruhwald M, Sculier JP, Simunovic A, Smith-Palmer A, Sotgiu G, Sulis G, Torres-Duque CA, Umeki K, Uplekar M, van Weezenbeek C, Vasankari T, Vittinghoff R, Vittinghoff C, Wanlin M, and Raviglione MC. 2015. Towards tuberculosis elimination: an action framework for low-incidence countries. *Eur Respir J* 45:928-952. 10.1183/09031936.00214014
- Lozano R, Naghavi M, Foreman K, Lim S, Shibuya K, Aboyans V, Abraham J, Adair T, Aggarwal R, Ahn SY, Alvarado M, Anderson HR, Anderson LM, Andrews KG, Atkinson C, Baddour LM, Barker-Collo S, Bartels DH, Bell ML, Benjamin EJ, Bennett D, Bhalla K, Bikbov B, Bin Abdulhak A, Birbeck G, Blyth F, Bolliger I, Boufous S, Bucello C, Burch M, Burney P, Carapetis J, Chen H, Chou D, Chugh SS, Coffeng LE, Colan SD, Colquhoun S, Colson KE, Condon J, Connor MD, Cooper LT, Corriere M, Cortinovis M, de Vaccaro KC, Couser W, Cowie BC, Criqui MH, Cross M, Dabhadkar KC, Dahodwala N, De Leo D, Degenhardt L, Delossantos A, Denenberg J, Des Jarlais DC, Dharmaratne SD, Dorsey ER, Driscoll T, Duber H, Ebel B, Erwin PJ, Espindola P, Ezzati M, Feigin V, Flaxman AD, Forouzanfar MH, Fowkes FG, Franklin R, Fransen M, Freeman MK, Gabriel SE, Gakidou E, Gaspari F, Gillum RF, Gonzalez-Medina D, Halasa YA, Haring D, Harrison JE, Havmoeller R, Hay RJ, Hoen B, Hotez PJ, Hoy D, Jacobsen KH, James SL, Jasrasaria R, Jayaraman S, Johns N, Karthikeyan G, Kassebaum N, Keren A, Khoo JP, Knowlton LM, Kobusingye O, Koranteng A, Krishnamurthi R, Lipnick M, Lipshultz SE, Ohno SL, Mabweijano J, MacIntyre MF, Mallinger L, March L, Marks GB, Marks R, Matsumori A, Matzopoulos R, Mayosi BM, McAnulty JH, McDermott MM, McGrath J, Mensah GA, Merriman TR, Michaud C, Miller M, Miller TR, Mock C, Mocumbi AO, Mokdad AA, Moran A, Mulholland K, Nair MN, Naldi L, Narayan KM, Nasseri K, Norman P, O'Donnell M, Omer SB, Ortblad K, Osborne R, Ozgediz D, Pahari B, Pandian JD, Rivero AP, Padilla RP, Perez-Ruiz F, Perico N, Phillips D, Pierce K,

- Pope CA, 3rd, Porrini E, Pourmalek F, Raju M, Ranganathan D, Rehm JT, Rein DB, Remuzzi G, Rivara FP, Roberts T, De Leon FR, Rosenfeld LC, Rushton L, Sacco RL, Salomon JA, Sampson U, Sanman E, Schwebel DC, Segui-Gomez M, Shepard DS, Singh D, Singleton J, Sliwa K, Smith E, Steer A, Taylor JA, Thomas B, Tleyjeh IM, Towbin JA, Truelsen T, Undurraga EA, Venketasubramanian N, Vijayakumar L, Vos T, Wagner GR, Wang M, Wang W, Watt K, Weinstock MA, Weintraub R, Wilkinson JD, Woolf AD, Wulf S, Yeh PH, Yip P, Zabetian A, Zheng ZJ, Lopez AD, Murray CJ, AlMazroa MA, and Memish ZA. 2012. Global and regional mortality from 235 causes of death for 20 age groups in 1990 and 2010: a systematic analysis for the Global Burden of Disease Study 2010. *Lancet* 380:2095-2128. 10.1016/S0140-6736(12)61728-0
- Lundgren BR, Connolly MP, Choudhary P, Brookins-Little TS, Chatterjee S, Raina R, and Nomura CT. 2015. Defining the Metabolic Functions and Roles in Virulence of the rpoN1 and rpoN2 Genes in *Ralstonia solanacearum* GMI1000. *PLoS One* 10:e0144852. 10.1371/journal.pone.0144852
- Marrakchi H, Laneelle MA, and Daffe M. 2014. Mycolic acids: structures, biosynthesis, and beyond. *Chem Biol* 21:67-85. 10.1016/j.chembiol.2013.11.011
- Marras TK, Mendelson D, Marchand-Austin A, May K, and Jamieson FB. 2013. Pulmonary nontuberculous mycobacterial disease, Ontario, Canada, 1998-2010. *Emerg Infect Dis* 19:1889-1891. 10.3201/eid1911.130737
- Marri PR, Bannantine JP, and Golding GB. 2006. Comparative genomics of metabolic pathways in *Mycobacterium* species: gene duplication, gene decay and lateral gene transfer. *FEMS Microbiol Rev* 30:906-925. 10.1111/j.1574-6976.2006.00041.x
- Mears J, Abubakar I, Cohen T, McHugh TD, and Sonnenberg P. 2015. Effect of study design and setting on tuberculosis clustering estimates using *Mycobacterium* Interspersed Repetitive Units-Variable Number Tandem Repeats (MIRU-VNTR): a systematic review. *BMJ Open* 5:e005636. 10.1136/bmjopen-2014-005636
- Mijs W, de Haas P, Rossau R, Van der Laan T, Rigouts L, Portaels F, and van Soolingen D. 2002. Molecular evidence to support a proposal to reserve the designation *Mycobacterium avium* subsp. *avium* for bird-type isolates and 'M. avium subsp. hominissuis' for the human/porcine type of *M. avium*. *Int J Syst Evol Microbiol* 52:1505-1518. 10.1099/00207713-52-5-1505
- Moore JE, Kruijshaar ME, Ormerod LP, Drobniewski F, and Abubakar I. 2010. Increasing reports of non-tuberculous mycobacteria in England, Wales and Northern Ireland, 1995-2006. *BMC Public Health* 10:612. 10.1186/1471-2458-10-612
- Morimoto K, Iwai K, Uchimura K, Okumura M, Yoshiyama T, Yoshimori K, Ogata H, Kurashima A, Gemma A, and Kudoh S. 2014. A steady increase in nontuberculous mycobacteriosis mortality and estimated prevalence in Japan. *Ann Am Thorac Soc* 11:1-8. 10.1513/AnnalsATS.201303-067OC
- Mugal CF, Wolf JB, and Kaj I. 2014. Why time matters: codon evolution and the temporal dynamics of dN/dS. *Mol Biol Evol* 31:212-231. 10.1093/molbev/mst192
- Mukhopadhyay S, and Balaji KN. 2011. The PE and PPE proteins of *Mycobacterium tuberculosis*. *Tuberculosis (Edinb)* 91:441-447. 10.1016/j.tube.2011.04.004
- Mura M, Bull TJ, Evans H, Sidi-Boumedine K, McMinn L, Rhodes G, Pickup R, and Hermon-Taylor J. 2006. Replication and long-term persistence of bovine and human strains of *Mycobacterium avium* subsp. *paratuberculosis* within *Acanthamoeba* polyphaga. *Appl Environ Microbiol* 72:854-859. 10.1128/AEM.72.1.854-859.2006
- Murray CJ, Ortblad KF, Guinovart C, Lim SS, Wolock TM, Roberts DA, Dansereau EA, Graetz N, Barber RM, Brown JC, Wang H, Duber HC, Naghavi M, Dicker D, Dandona L, Salomon JA, Heuton KR, Foreman K, Phillips DE, Fleming TD, Flaxman

AD, Phillips BK, Johnson EK, Coggeshall MS, Abd-Allah F, Abera SF, Abraham JP, Abubakar I, Abu-Raddad LJ, Abu-Rmeileh NM, Achoki T, Adeyemo AO, Adou AK, Adsuar JC, Agardh EE, Akena D, Al Kahbouri MJ, Alasfoor D, Albittar MI, Alcalá-Cerra G, Alegretti MA, Alemu ZA, Alfonso-Cristancho R, Alhabib S, Ali R, Alla F, Allen PJ, Alsharif U, Alvarez E, Alvis-Guzman N, Amankwaa AA, Amare AT, Amini H, Ammar W, Anderson BO, Antonio CA, Anwari P, Arnlov J, Arsenijevic VS, Artaman A, Asghar RJ, Assadi R, Atkins LS, Badawi A, Balakrishnan K, Banerjee A, Basu S, Beardsley J, Bekele T, Bell ML, Bernabe E, Beyene TJ, Bhala N, Bhalla A, Bhutta ZA, Abdulhak AB, Binagwaho A, Blore JD, Basara BB, Bose D, Brainin M, Breitborde N, Castaneda-Orjuela CA, Catala-Lopez F, Chadha VK, Chang JC, Chiang PP, Chuang TW, Colomar M, Cooper LT, Cooper C, Courville KJ, Cowie BC, Criqui MH, Dandona R, Dayama A, De Leo D, Degenhardt L, Del Pozo-Cruz B, Deribe K, Des Jarlais DC, Dessalegn M, Dharmaratne SD, Dilmen U, Ding EL, Driscoll TR, Durrani AM, Ellenbogen RG, Ermakov SP, Esteghamati A, Faraon EJ, Farzadfar F, Fereshtehnejad SM, Fijabi DO, Forouzanfar MH, Fra Paleo U, Gaffikin L, Gamkrelidze A, Gankpe FG, Geleijnse JM, Gessner BD, Gibney KB, Ginawi IA, Glaser EL, Gona P, Goto A, Gouda HN, Gughani HC, Gupta R, Gupta R, Hafezi-Nejad N, Hamadeh RR, Hammami M, Hankey GJ, Harb HL, Haro JM, Havmoeller R, Hay SI, Hedayati MT, Pi IB, Hoek HW, Hornberger JC, Hosgood HD, Hotez PJ, Hoy DG, Huang JJ, Iburg KM, Idrisov BT, Innos K, Jacobsen KH, Jeemon P, Jensen PN, Jha V, Jiang G, Jonas JB, Juel K, Kan H, Kankindi I, Karam NE, Karch A, Karema CK, Kaul A, Kawakami N, Kazi DS, Kemp AH, Kengne AP, Keren A, Kereselidze M, Khader YS, Khalifa SE, Khan EA, Khang YH, Khonelidze I, Kinfu Y, Kinge JM, Knibbs L, Kokubo Y, Kosen S, Defo BK, Kulkarni VS, Kulkarni C, Kumar K, Kumar RB, Kumar GA, Kwan GF, Lai T, Balaji AL, Lam H, Lan Q, Lansingh VC, Larson HJ, Larsson A, Lee JT, Leigh J, Leinsalu M, Leung R, Li Y, Li Y, De Lima GM, Lin HH, Lipshultz SE, Liu S, Liu Y, Lloyd BK, Lotufo PA, Machado VM, Maclachlan JH, Magis-Rodriguez C, Majdan M, Mapoma CC, Marcenes W, Marzan MB, Masci JR, Mashal MT, Mason-Jones AJ, Mayosi BM, Mazorodze TT, McKay AC, Meaney PA, Mehndiratta MM, Mejia-Rodriguez F, Melaku YA, Memish ZA, Mendoza W, Miller TR, Mills EJ, Mohammad KA, Mokdad AH, Mola GL, Monasta L, Montico M, Moore AR, Mori R, Moturi WN, Mukaigawara M, Murthy KS, Naheed A, Naidoo KS, Naldi L, Nangia V, Narayan KM, Nash D, Nejjari C, Nelson RG, Neupane SP, Newton CR, Ng M, Nisar MI, Nolte S, Norheim OF, Nowaseb V, Nyakarahuka L, Oh IH, Ohkubo T, Olusanya BO, Omer SB, Opio JN, Orisakwe OE, Pandian JD, Papachristou C, Caicedo AJ, Patten SB, Paul VK, Pavlin BI, Pearce N, Pereira DM, Pervaiz A, Pesudovs K, Petzold M, Pourmalek F, Qato D, Quezada AD, Quistberg DA, Rafay A, Rahimi K, Rahimi-Movaghar V, Ur Rahman S, Raju M, Rana SM, Razavi H, Reilly RQ, Remuzzi G, Richardus JH, Ronfani L, Roy N, Sabin N, Saeedi MY, Sahraian MA, Samonte GM, Sawhney M, Schneider IJ, Schwebel DC, Seedat S, Sepanlou SG, Servan-Mori EE, Sheikhabaehi S, Shibuya K, Shin HH, Shiue I, Shivakoti R, Sigfusdottir ID, Silberberg DH, Silva AP, Simard EP, Singh JA, Skirbekk V, Sliwa K, Soneji S, Soshnikov SS, Sreeramareddy CT, Stathopoulou VK, Stroumpoulis K, Swaminathan S, Sykes BL, Tabb KM, Talongwa RT, Tenkorang EY, Terkawi AS, Thomson AJ, Thorne-Lyman AL, Towbin JA, Traebert J, Tran BX, Dimbuene ZT, Tsilimbaris M, Uchendu US, Ukwaja KN, Uzun SB, Valley AJ, Vasankari TJ, Venketasubramanian N, Violante FS, Vlassov VV, Vollset SE, Waller S, Wallin MT, Wang L, Wang X, Wang Y, Weichenthal S, Weiderpass E, Weintraub RG, Westerman R, White RA, Wilkinson JD, Williams TN, Woldeyohannes SM, Wong JQ, Xu G, Yang YC, Yano Y, Yentur GK, Yip P, Yonemoto N, Yoon SJ,

- Younis M, Yu C, Jin KY, El Sayed Zaki M, Zhao Y, Zheng Y, Zhou M, Zhu J, Zou XN, Lopez AD, and Vos T. 2014. Global, regional, and national incidence and mortality for HIV, tuberculosis, and malaria during 1990-2013: a systematic analysis for the Global Burden of Disease Study 2013. *Lancet* 384:1005-1070. 10.1016/S0140-6736(14)60844-8
- Naser SA, Sagramsingh SR, Naser AS, and Thanigachalam S. 2014. Mycobacterium avium subspecies paratuberculosis causes Crohn's disease in some inflammatory bowel disease patients. *World J Gastroenterol* 20:7403-7415. 10.3748/wjg.v20.i23.7403
- Nataraj V, Varela C, Javid A, Singh A, Besra GS, and Bhatt A. 2015. Mycolic acids: deciphering and targeting the Achilles' heel of the tubercle bacillus. *Mol Microbiol* 98:7-16. 10.1111/mmi.13101
- Neiderud CJ. 2015. How urbanization affects the epidemiology of emerging infectious diseases. *Infect Ecol Epidemiol* 5:27060. 10.3402/iee.v5.27060
- Njoroge JW, Nguyen Y, Curtis MM, Moreira CG, and Sperandio V. 2012. Virulence meets metabolism: Cra and KdpE gene regulation in enterohemorrhagic Escherichia coli. *MBio* 3:e00280-00212. 10.1128/mBio.00280-12
- Norton CD, LeChevallier MW, and Falkinham JO, 3rd. 2004. Survival of Mycobacterium avium in a model distribution system. *Water Res* 38:1457-1466. 10.1016/j.watres.2003.07.008
- Olivier KN, Weber DJ, Wallace RJ, Jr., Faiz AR, Lee JH, Zhang Y, Brown-Elliot BA, Handler A, Wilson RW, Schechter MS, Edwards LJ, Chakraborti S, Knowles MR, and Nontuberculous Mycobacteria in Cystic Fibrosis Study G. 2003. Nontuberculous mycobacteria. I: multicenter prevalence study in cystic fibrosis. *Am J Respir Crit Care Med* 167:828-834. 10.1164/rccm.200207-678OC
- Orens JB, Estenne M, Arcasoy S, Conte JV, Corris P, Egan JJ, Egan T, Keshavjee S, Knoop C, Kotloff R, Martinez FJ, Nathan S, Palmer S, Patterson A, Singer L, Snell G, Studer S, Vachieri JL, Glanville AR, Pulmonary Scientific Council of the International Society for H, and Lung T. 2006. International guidelines for the selection of lung transplant candidates: 2006 update--a consensus report from the Pulmonary Scientific Council of the International Society for Heart and Lung Transplantation. *J Heart Lung Transplant* 25:745-755. 10.1016/j.healun.2006.03.011
- Parker BC, Ford MA, Gruft H, and Falkinham JO, 3rd. 1983. Epidemiology of infection by nontuberculous mycobacteria. IV. Preferential aerosolization of Mycobacterium intracellulare from natural waters. *Am Rev Respir Dis* 128:652-656. 10.1164/arrd.1983.128.4.652
- Peirs P, Lefevre P, Boarbi S, Wang XM, Denis O, Braibant M, Pethe K, Locht C, Huygen K, and Content J. 2005. Mycobacterium tuberculosis with disruption in genes encoding the phosphate binding proteins PstS1 and PstS2 is deficient in phosphate uptake and demonstrates reduced in vivo virulence. *Infect Immun* 73:1898-1902. 10.1128/IAI.73.3.1898-1902.2005
- Perdikogianni C, and Galanakis E. 2014. Non-tuberculous mycobacterial cervical lymphadenitis in the immunocompetent child: diagnostic and treatment approach. *Expert Rev Anti Infect Ther* 12:959-965. 10.1586/14787210.2014.920691
- Philly JV, and Griffith DE. 2015. Treatment of slowly growing mycobacteria. *Clin Chest Med* 36:79-90. 10.1016/j.ccm.2014.10.005
- Piersimoni C, and Scarparo C. 2009. Extrapulmonary infections associated with nontuberculous mycobacteria in immunocompetent persons. *Emerg Infect Dis* 15:1351-1358; quiz 1544. 10.3201/eid1509.081259
- Pontali E, Matteelli A, and Migliori GB. 2013. Drug-resistant tuberculosis. *Curr Opin Pulm Med* 19:266-272. 10.1097/MCP.0b013e32835f1bf3

- Radomski N, Thibault VC, Karoui C, de Cruz K, Cochard T, Gutierrez C, Supply P, Biet F, and Boschirola ML. 2010. Determination of genotypic diversity of *Mycobacterium avium* subspecies from human and animal origins by mycobacterial interspersed repetitive-unit-variable-number tandem-repeat and IS1311 restriction fragment length polymorphism typing methods. *J Clin Microbiol* 48:1026-1034. 10.1128/JCM.01869-09
- Ramazanzadeh R, and Sayhemiri K. 2014. Prevalence of Beijing family in *Mycobacterium tuberculosis* in world population: Systematic Review and Meta-Analysis. *Int J Mycobacteriol* 3:41-45. 10.1016/j.ijmyco.2014.01.001
- Reva O, Korotetskiy I, and Ilin A. 2015. Role of the horizontal gene exchange in evolution of pathogenic *Mycobacteria*. *BMC Evol Biol* 15 Suppl 1:S2. 10.1186/1471-2148-15-S1-S2
- Rindi L, Buzzigoli A, Medici C, and Garzelli C. 2013. High phylogenetic proximity of isolates of *Mycobacterium avium* subsp. *hominissuis* over a two decades-period. *Infect Genet Evol* 16:99-102. 10.1016/j.meegid.2013.01.022
- Rindi L, and Garzelli C. 2014. Genetic diversity and phylogeny of *Mycobacterium avium*. *Infect Genet Evol* 21:375-383. 10.1016/j.meegid.2013.12.007
- Rindi L, and Garzelli C. 2016. Increase in non-tuberculous mycobacteria isolated from humans in Tuscany, Italy, from 2004 to 2014. *BMC Infect Dis* 16:44. 10.1186/s12879-016-1380-y
- Ringshausen FC, Wagner D, de Roux A, Diel R, Hohmann D, Hickstein L, Welte T, and Rademacher J. 2016. Prevalence of Nontuberculous Mycobacterial Pulmonary Disease, Germany, 2009-2014. *Emerg Infect Dis* 22:1102-1105. 10.3201/eid2206.151642
- Rosas-Magallanes V, Deschavanne P, Quintana-Murci L, Brosch R, Gicquel B, and Neyrolles O. 2006. Horizontal transfer of a virulence operon to the ancestor of *Mycobacterium tuberculosis*. *Mol Biol Evol* 23:1129-1135. 10.1093/molbev/msj120
- Roy Chowdhury P, Scott M, Worden P, Huntington P, Hudson B, Karagiannis T, Charles IG, and Djordjevic SP. 2016. Genomic islands 1 and 2 play key roles in the evolution of extensively drug-resistant ST235 isolates of *Pseudomonas aeruginosa*. *Open Biol* 6. 10.1098/rsob.150175
- Rue-Albrecht K, Magee DA, Killick KE, Nalpas NC, Gordon SV, and MacHugh DE. 2014. Comparative functional genomics and the bovine macrophage response to strains of the mycobacterium genus. *Front Immunol* 5:536. 10.3389/fimmu.2014.00536
- Saini V, Raghuvanshi S, Khurana JP, Ahmed N, Hasnain SE, Tyagi AK, and Tyagi AK. 2012. Massive gene acquisitions in *Mycobacterium indicus pranii* provide a perspective on mycobacterial evolution. *Nucleic Acids Res* 40:10832-10850. 10.1093/nar/gks793
- Sampson SL. 2011. Mycobacterial PE/PPE proteins at the host-pathogen interface. *Clin Dev Immunol* 2011:497203. 10.1155/2011/497203
- Sanchini A, Semmler T, Mao L, Kumar N, Dematheis F, Tandon K, Peddireddy V, Ahmed N, and Lewin A. 2016. A hypervariable genomic island identified in clinical and environmental *Mycobacterium avium* subsp. *hominissuis* isolates from Germany. *Int J Med Microbiol*. 10.1016/j.ijmm.2016.07.001
- Santic M, and Abu Kwaik Y. 2013. Nutritional virulence of *Francisella tularensis*. *Front Cell Infect Microbiol* 3:112. 10.3389/fcimb.2013.00112
- Schmalstieg AM, Srivastava S, Belkaya S, Deshpande D, Meek C, Leff R, van Oers NS, and Gumbo T. 2012. The antibiotic resistance arrow of time: efflux pump induction is a general first step in the evolution of mycobacterial drug resistance. *Antimicrob Agents Chemother* 56:4806-4815. 10.1128/AAC.05546-11

- Schnappinger D, Ehrt S, Voskuil MI, Liu Y, Mangan JA, Monahan IM, Dolganov G, Efron B, Butcher PD, Nathan C, and Schoolnik GK. 2003. Transcriptional Adaptation of *Mycobacterium tuberculosis* within Macrophages: Insights into the Phagosomal Environment. *J Exp Med* 198:693-704. 10.1084/jem.20030846
- Schoen C, Kischkies L, Elias J, and Ampattu BJ. 2014. Metabolism and virulence in *Neisseria meningitidis*. *Front Cell Infect Microbiol* 4:114. 10.3389/fcimb.2014.00114
- Schrenzel M, Nicolas M, Witte C, Papendick R, Tucker T, Keener L, Sutherland-Smith M, Lamberski N, Orndorff D, Heckard D, Witman P, Mace M, Rimlinger D, Reed S, and Rideout B. 2008. Molecular epidemiology of *Mycobacterium avium* subsp. *avium* and *Mycobacterium intracellulare* in captive birds. *Vet Microbiol* 126:122-131. 10.1016/j.vetmic.2007.06.016
- Sechi LA, and Dow CT. 2015. *Mycobacterium avium* ss. *paratuberculosis* Zoonosis - The Hundred Year War - Beyond Crohn's Disease. *Front Immunol* 6:96. 10.3389/fimmu.2015.00096
- Semret M, Zhai G, Mostowy S, Cleto C, Alexander D, Cangelosi G, Cousins D, Collins DM, van Soolingen D, and Behr MA. 2004. Extensive genomic polymorphism within *Mycobacterium avium*. *J Bacteriol* 186:6332-6334. 10.1128/JB.186.18.6332-6334.2004
- Sermet-Gaudelus I, Le Bourgeois M, Pierre-Audigier C, Offredo C, Guillemot D, Halley S, Akoua-Koffi C, Vincent V, Sivadon-Tardy V, Ferroni A, Berche P, Scheinmann P, Lenoir G, and Gaillard JL. 2003. *Mycobacterium abscessus* and children with cystic fibrosis. *Emerg Infect Dis* 9:1587-1591. 10.3201/eid0912.020774
- Shankar N, Baghdayan AS, and Gilmore MS. 2002. Modulation of virulence within a pathogenicity island in vancomycin-resistant *Enterococcus faecalis*. *Nature* 417:746-750. 10.1038/nature00802
- Shitaye JE, Matlova L, Horvathova A, Moravkova M, Dvorska-Bartosova L, Tremel F, Lamka J, and Pavlik I. 2008. *Mycobacterium avium* subsp. *avium* distribution studied in a naturally infected hen flock and in the environment by culture, serotyping and IS901 RFLP methods. *Vet Microbiol* 127:155-164. 10.1016/j.vetmic.2007.07.026
- Shuman EK. 2010. Global climate change and infectious diseases. *N Engl J Med* 362:1061-1063. 10.1056/NEJMp0912931
- Singh SV, Singh AV, Singh PK, Kumar A, and Singh B. 2011. Molecular identification and characterization of *Mycobacterium avium* subspecies *paratuberculosis* in free living non-human primate (*Rhesus macaques*) from North India. *Comp Immunol Microbiol Infect Dis* 34:267-271. 10.1016/j.cimid.2010.12.004
- Slany M, and Pavlik I. 2012. Molecular detection of nontuberculous mycobacteria: advantages and limits of a broad-range sequencing approach. *J Mol Microbiol Biotechnol* 22:268-276. 10.1159/000342517
- Sousa S, Bandeira M, Carvalho PA, Duarte A, and Jordao L. 2015. Nontuberculous mycobacteria pathogenesis and biofilm assembly. *Int J Mycobacteriol* 4:36-43. 10.1016/j.ijmyco.2014.11.065
- Stevenson K, Alvarez J, Bakker D, Biet F, de Juan L, Denham S, Dimareli Z, Dohmann K, Gerlach GF, Heron I, Kopecna M, May L, Pavlik I, Sharp JM, Thibault VC, Willemsen P, Zadoks RN, and Greig A. 2009. Occurrence of *Mycobacterium avium* subspecies *paratuberculosis* across host species and European countries with evidence for transmission between wildlife and domestic ruminants. *BMC Microbiol* 9:212. 10.1186/1471-2180-9-212
- Stewart GR, Patel J, Robertson BD, Rae A, and Young DB. 2005. *Mycobacterial* mutants with defective control of phagosomal acidification. *PLoS Pathog* 1:269-278. 10.1371/journal.ppat.0010033

- Supply P, Marceau M, Mangenot S, Roche D, Rouanet C, Khanna V, Majlessi L, Criscuolo A, Tap J, Pawlik A, Fiette L, Orgeur M, Fabre M, Parmentier C, Frigui W, Simeone R, Boritsch EC, Debrie AS, Willery E, Walker D, Quail MA, Ma L, Bouchier C, Salvignol G, Sayes F, Cascioferro A, Seemann T, Barbe V, Loch C, Gutierrez MC, Leclerc C, Bentley SD, Stinear TP, Brisse S, Medigue C, Parkhill J, Cruveiller S, and Brosch R. 2013. Genomic analysis of smooth tubercle bacilli provides insights into ancestry and pathoadaptation of *Mycobacterium tuberculosis*. *Nat Genet* 45:172-179. 10.1038/ng.2517
- Thegerstrom J, Marklund BI, Hoffner S, Axelsson-Olsson D, Kauppinen J, and Olsen B. 2005. *Mycobacterium avium* with the bird type IS1245 RFLP profile is commonly found in wild and domestic animals, but rarely in humans. *Scand J Infect Dis* 37:15-20. 10.1080/00365540510026850
- Thomson RM, Centre NTMwgaQTC, and Queensland Mycobacterial Reference L. 2010. Changing epidemiology of pulmonary nontuberculous mycobacteria infections. *Emerg Infect Dis* 16:1576-1583. 10.3201/eid1610.091201
- Thorel MF, Krichevsky M, and Levy-Frebault VV. 1990. Numerical taxonomy of mycobactin-dependent mycobacteria, emended description of *Mycobacterium avium*, and description of *Mycobacterium avium* subsp. *avium* subsp. nov., *Mycobacterium avium* subsp. *paratuberculosis* subsp. nov., and *Mycobacterium avium* subsp. *silvaticum* subsp. nov. *Int J Syst Bacteriol* 40:254-260. 10.1099/00207713-40-3-254
- Tirkkonen T, Pakarinen J, Rintala E, Ali-Vehmas T, Marttila H, Peltoniemi OA, and Makinen J. 2010. Comparison of variable-number tandem-repeat markers typing and IS1245 restriction fragment length polymorphism fingerprinting of *Mycobacterium avium* subsp. *hominissuis* from human and porcine origins. *Acta Vet Scand* 52:21. 10.1186/1751-0147-52-21
- Tortoli E. 2009. Clinical manifestations of nontuberculous mycobacteria infections. *Clin Microbiol Infect* 15:906-910. 10.1111/j.1469-0691.2009.03014.x
- Tortoli E. 2014. Microbiological features and clinical relevance of new species of the genus *Mycobacterium*. *Clin Microbiol Rev* 27:727-752. 10.1128/CMR.00035-14
- Tran QT, and Han XY. 2014. Subspecies identification and significance of 257 clinical strains of *Mycobacterium avium*. *J Clin Microbiol* 52:1201-1206. 10.1128/JCM.03399-13
- Treangen TJ, and Rocha EP. 2011. Horizontal transfer, not duplication, drives the expansion of protein families in prokaryotes. *PLoS Genet* 7:e1001284. 10.1371/journal.pgen.1001284
- Trivedi OA, Arora P, Sridharan V, Tickoo R, Mohanty D, and Gokhale RS. 2004. Enzymic activation and transfer of fatty acids as acyl-adenylates in mycobacteria. *Nature* 428:441-445. 10.1038/nature02384
- Turenne CY, Collins DM, Alexander DC, and Behr MA. 2008. *Mycobacterium avium* subsp. *paratuberculosis* and *M. avium* subsp. *avium* are independently evolved pathogenic clones of a much broader group of *M. avium* organisms. *J Bacteriol* 190:2479-2487. 10.1128/JB.01691-07
- Turenne CY, Semret M, Cousins DV, Collins DM, and Behr MA. 2006. Sequencing of hsp65 distinguishes among subsets of the *Mycobacterium avium* complex. *J Clin Microbiol* 44:433-440. 10.1128/JCM.44.2.433-440.2006
- Turenne CY, Wallace R, Jr., and Behr MA. 2007. *Mycobacterium avium* in the postgenomic era. *Clin Microbiol Rev* 20:205-229. 10.1128/CMR.00036-06
- Uchiya K, Takahashi H, Yagi T, Moriyama M, Inagaki T, Ichikawa K, Nakagawa T, Nikai T, and Ogawa K. 2013. Comparative genome analysis of *Mycobacterium avium* revealed genetic diversity in strains that cause pulmonary and disseminated disease. *PLoS One* 8:e71831. 10.1371/journal.pone.0071831

- Van Deun A, Hossain MA, Gumusboga M, and Rieder HL. 2008. Ziehl-Neelsen staining: theory and practice. *Int J Tuberc Lung Dis* 12:108-110.
- van Ingen J, Bendien SA, de Lange WC, Hoefsloot W, Dekhuijzen PN, Boeree MJ, and van Soolingen D. 2009. Clinical relevance of non-tuberculous mycobacteria isolated in the Nijmegen-Arnhem region, The Netherlands. *Thorax* 64:502-506. 10.1136/thx.2008.110957
- Ventola CL. 2015a. The antibiotic resistance crisis: part 1: causes and threats. *P T* 40:277-283.
- Ventola CL. 2015b. The antibiotic resistance crisis: part 2: management strategies and new agents. *P T* 40:344-352.
- Ventura M, Canchaya C, Tauch A, Chandra G, Fitzgerald GF, Chater KF, and van Sinderen D. 2007. Genomics of Actinobacteria: tracing the evolutionary history of an ancient phylum. *Microbiol Mol Biol Rev* 71:495-548. 10.1128/MMBR.00005-07
- Vicente M, and Mingorance J. 2008. Microbial evolution: the genome, the regulome and beyond. *Environ Microbiol* 10:1663-1667. 10.1111/j.1462-2920.2008.01635.x
- Wayne LG, Good RC, Krichevsky MI, Blacklock Z, David HL, Dawson D, Gross W, Hawkins J, Levy-Frebault VV, McManus C, and et al. 1991. Fourth report of the cooperative, open-ended study of slowly growing mycobacteria by the International Working Group on Mycobacterial Taxonomy. *Int J Syst Bacteriol* 41:463-472. 10.1099/00207713-41-4-463
- Whan L, Grant IR, and Rowe MT. 2006. Interaction between Mycobacterium avium subsp. paratuberculosis and environmental protozoa. *BMC Microbiol* 6:63. 10.1186/1471-2180-6-63
- Whittington RJ, Marsh I, McAllister S, Turner MJ, Marshall DJ, and Fraser CA. 1999. Evaluation of modified BACTEC 12B radiometric medium and solid media for culture of Mycobacterium avium subsp. paratuberculosis from sheep. *J Clin Microbiol* 37:1077-1083.
- Whittington RJ, Marshall DJ, Nicholls PJ, Marsh IB, and Reddacliff LA. 2004. Survival and dormancy of Mycobacterium avium subsp. paratuberculosis in the environment. *Appl Environ Microbiol* 70:2989-3004.
- Windsor PA. 2015. Paratuberculosis in sheep and goats. *Vet Microbiol* 181:161-169. 10.1016/j.vetmic.2015.07.019
- Wu CW, Glasner J, Collins M, Naser S, and Talaat AM. 2006. Whole-genome plasticity among Mycobacterium avium subspecies: insights from comparative genomic hybridizations. *J Bacteriol* 188:711-723. 10.1128/JB.188.2.711-723.2006
- Xie J, Zhou F, Xu G, Mai G, Hu J, Wang G, and Li F. 2014. Genome-wide screening of pathogenicity islands in Mycobacterium tuberculosis based on the genomic barcode visualization. *Mol Biol Rep* 41:5883-5889. 10.1007/s11033-014-3463-4
- Yang X, Yang H, Zhou G, and Zhao GP. 2008. Infectious disease in the genomic era. *Annu Rev Genomics Hum Genet* 9:21-48. 10.1146/annurev.genom.9.081307.164428
- Yuan Y, Mead D, Schroeder BG, Zhu Y, and Barry CE, 3rd. 1998. The biosynthesis of mycolic acids in Mycobacterium tuberculosis. Enzymatic methyl(ene) transfer to acyl carrier protein bound meromycolic acid in vitro. *J Biol Chem* 273:21282-21290.
- Zuber B, Chami M, Houssin C, Dubochet J, Griffiths G, and Daffe M. 2008. Direct visualization of the outer membrane of mycobacteria and corynebacteria in their native state. *J Bacteriol* 190:5672-5680. 10.1128/JB.01919-07

9. List of publications

9.1 Scientific articles

Andrea Sanchini, Torsten Semmler, Lei Mao, Narender Kumar, Flavia Dematheis, Kshitij Tandon, Vidyullatha Peddireddy, Niyaz Ahmed, Astrid Lewin. A hypervariable genomic island identified in clinical and environmental *Mycobacterium avium* subsp. *hominissuis* isolates from Germany. Int J Med Microbiol. 2016 Jul 18. Int J Med Microbiol. 2016 Nov;306(7):495-503. doi: 10.1016/j.ijmm.2016.07.001.

Andrea Sanchini, Flavia Dematheis, Torsten Semmler, Astrid Lewin. Metabolic phenotype of clinical and environmental *Mycobacterium avium* subsp. *hominissuis* isolates. PeerJ. 2017 Jan 3; 5:e2833. doi: 10.7717/peerj.2833.

Annesha Lahiri, **Andrea Sanchini**, Torsten Semmler, Hubert Schäfer, Astrid Lewin. Identification and comparative analysis of a genomic island in *Mycobacterium avium* subsp. *hominissuis*. FEBS Lett. 2014 Nov 3;588(21):3906-11.

9.2 Poster presentations at conferences

Andrea Sanchini, Torsten Semmler, Lei Mao, Narender Kumar, Flavia Dematheis, Kshitij Tandon, Vidyullatha Peddireddy, Niyaz Ahmed, Astrid Lewin. A Genomic Island identified in clinical and environmental *Mycobacterium avium* subsp. *hominissuis* isolates from Germany. 11th International Meeting on Microbial Epidemiological Markers (IMMEM XI), Lisbon, Portugal, 09-12/03/2016.

Andrea Sanchini, Annesha Lahiri, Torsten Semmler, Inga Eichhorn, Niyaz Ahmed, Narender Kumar, Kshitij Tandon, Astrid Lewin. Identification of a genomic island in clinical and environmental strains of *Mycobacterium avium* subsp. *hominissuis* isolated in Germany. 25th European Congress of Clinical Microbiology and Infectious Diseases, Copenhagen, Denmark, 25-28/04/2015.

Annesha Lahiri, **Andrea Sanchini**, Hubert Schäfer, Astrid Lewin. *Mycobacterium avium* subsp. *hominissuis* infections: the importance of genetic diversity. 9th International Conference on mycobacterial pathogenesis, Stockholm, Sweden, 26-29/06/2014

9.3 Scientific presentations at conferences

Andrea Sanchini, Annesha Lahiri, Torsten Semmler, Inga Eichhorn, Niyaz Ahmed, Narender Kumar, Kshitij Tandon, Astrid Lewin. *Mycobacterium avium* subsp. *hominissuis* isolated in Germany: characterization of a new genomic island. European Symposium on Non-Tuberculosis Mycobacteria - NTM 2015, Research Center Borstel, Germany, 24-27/06/2015.

Andrea Sanchini, Torsten Semmler, Lei Mao, Narender kumar, Flavia Dematheis, Kshitij Tandon, Vidyullatha Peddireddy, Niyaz Ahmed, Astrid Lewin. *Mycobacterium avium* subsp. *hominissuis*: the importance of genetic diversity. GRK 1673 and ROKODOKO symposium “Functional molecular infection epidemiology”, Berlin, Germany, 06/04/2016.

10. Acknowledgments

The first and the biggest acknowledgment is for my supervisor Dr. Astrid Lewin for her great availability and support during my PhD, for all the advice I received from her, for being the guide of my project also in difficult and less motivated moments and for the great patience she demonstrated in the three years. Many thanks for this wonderful supervision.

I would also like to thank my supervisor Prof. Dr. Lothar Wieler, first for having initiated the IRTG1673 PhD graduate school, which was a great learning opportunity and an enjoyable experience for me, and second for supervising my project during the three years.

I would also like to thank my supervisor Prof. Dr. Rupert Mutzel of the Biology Department and PD Dr. Volker Rickerts for supporting my project and for helping me during my professional development.

My special thanks go to Elisabeth Kamal, for teaching and helping me in all the laboratory procedures and protocols and for the great patience she demonstrated with me in the laboratory. Also, I would like to thank all the other colleagues of Dr. Astrid Lewin's group, especially Dr. Annesha Lahiri, PD Dr. Lei Mao, Greana Kirubakar and Sarah Berger for their advice in the lab and for the enjoyable atmosphere we had while working. I also thank all the other colleagues of the FG16 department of the Robert Koch Institute for their assistance during my PhD.

My gratitude also goes to two special collaborators, Torsten Semmler for the help and assistance with genome sequencing data and Dr. Flavia Dematheis for her assistance with the BIOLOG experiments and for the statistical support.

I would also like to thank the coordinators of the IRTG1673 graduate school Dr. Elisabeth Otto and Dr. Esther-Maria Antão for their invaluable help with the PhD logistics and for their assistance during the PhD.

Special thanks to the Indian collaboration team, especially to Dr. Niyaz Ahmed for having initiated the IRTG1673 PhD graduate school. Big thanks also to Shankar Doddam and

Gangadhar Dharmapuri who made me feel at home while I was in India for my research stay. I would also like to acknowledge Dr. Narender Kumar, Kshitij Tandon, Aditya Kumar and all the other members of Dr. Niyaz Ahmed's group for their support during my research stay in India.

Also I would like to acknowledge the colleagues from the Free University Berlin, especially PD Dr. Soroush Sharbati for reviewing my thesis and for the support during the PhD, Univ.-Prof. Dr. Thomas Alter for reviewing my thesis, Dr. Katharina Schaufler for the support with the BIOLOG experiments and Inga Eichhorn and Petra Krienke for their support with the whole genome sequencing data.

I also express my gratitude to all the other members of the IRTG1673 PhD graduate school family; it was wonderful to share all these experiences with you.

I would like to thank the Deutsche Forschungsgemeinschaft and the Robert Koch Institute for funding my PhD.

And last but not least, I would like to thank my girlfriend Hannah Ruhm, my family and my friends for their love and encouragement during the PhD and because they always believe in me.

11. Selbstständigkeitserklärung

Hiermit bestätige ich, dass ich die vorliegende Arbeit selbständig angefertigt habe. Ich versichere, dass ich ausschließlich die angegebenen Quellen und Hilfen in Anspruch genommen habe.

Andrea Sanchini

Berlin, 10/07/2017