



# Individual Effector/Regulator T Cell Ratios Impact Bone Regeneration

Claudia Schlundt<sup>1,2†</sup>, Simon Reinke<sup>1,2†</sup>, Sven Geissler<sup>1,2</sup>, Christian H. Bucher<sup>1,2</sup>, Carolin Giannini<sup>2,3</sup>, Sven Mårdian<sup>4</sup>, Michael Dahne<sup>4</sup>, Christian Kleber<sup>5</sup>, Björn Samans<sup>6</sup>, Udo Baron<sup>6</sup>, Georg N. Duda<sup>1,2,7,8\*</sup>, Hans-Dieter Volk<sup>2,3,7,8‡</sup> and Katharina Schmidt-Bleek<sup>1,2‡</sup>

<sup>1</sup> Julius Wolff Institut and Center for Musculoskeletal Surgery, Charité – Universitätsmedizin Berlin, Berlin, Germany, <sup>2</sup> Berlin-Brandenburg Center for Regenerative Therapies, Charité – Universitätsmedizin Berlin, Berlin, Germany, <sup>3</sup> Institute of Medical Immunology, Charité – Universitätsmedizin Berlin, Berlin, Germany, <sup>4</sup> Center for Musculoskeletal Surgery, Charité – Universitätsmedizin Berlin, Berlin, Germany, <sup>5</sup> University Center of Orthopaedics and Traumatology, University Medicine Carl Gustav Carus Dresden, Dresden, Germany, <sup>6</sup> Epiontis GmbH, Precision for Medicine Group, Berlin, Germany, <sup>7</sup> Berlin Center for Advanced Therapies (BeCAT), Charité – Universitätsmedizin Berlin, Berlin, Germany, <sup>8</sup> Berlin Institute of Health Center for Regenerative Therapies, Berlin, Germany

## OPEN ACCESS

### Edited by:

Loretta Tuosto,  
Sapienza University of Rome, Italy

### Reviewed by:

Gilberto Filaci,  
University of Genoa, Italy  
Jason R. Mock,  
University of North Carolina at  
Chapel Hill, United States

### \*Correspondence:

Georg N. Duda  
georg.duda@charite.de

†These authors have contributed  
equally to this work as first authors

‡These authors have contributed  
equally to this work as senior authors

### Specialty section:

This article was submitted to  
T Cell Biology,  
a section of the journal  
Frontiers in Immunology

Received: 10 May 2019

Accepted: 02 August 2019

Published: 16 August 2019

### Citation:

Schlundt C, Reinke S, Geissler S,  
Bucher CH, Giannini C, Mårdian S,  
Dahne M, Kleber C, Samans B,  
Baron U, Duda GN, Volk H-D and  
Schmidt-Bleek K (2019) Individual  
Effector/Regulator T Cell Ratios  
Impact Bone Regeneration.  
Front. Immunol. 10:1954.  
doi: 10.3389/fimmu.2019.01954

There is increasing evidence that T lymphocytes play a key role in controlling endogenous regeneration. Regeneration appears to be impaired in case of local accumulation of CD8+ effector T cells (T<sub>EFF</sub>), impairing endogenous regeneration by increasing a primary “useful” inflammation toward a damaging level. Thus, rescuing regeneration by regulating the heightened pro-inflammatory reaction employing regulatory CD4+ T (T<sub>Reg</sub>) cells could represent an immunomodulatory option to enhance healing. Hypothesis was that CD4+ T<sub>Reg</sub> might counteract undesired effects of CD8+ T<sub>EFF</sub>. Using adoptive T<sub>Reg</sub> transfer, bone healing was consistently improved in mice possessing an inexperienced immune system with low amounts of CD8+ T<sub>EFF</sub>. In contrast, mice with an experienced immune system (high amounts of CD8+ T<sub>EFF</sub>) showed heterogeneous bone repair with regeneration being dependent upon the individual T<sub>EFF</sub>/T<sub>Reg</sub> ratio. Thus, the healing outcome can only be improved by an adoptive T<sub>Reg</sub> therapy, if an unfavorable T<sub>EFF</sub>/T<sub>Reg</sub> ratio can be reshaped; if the individual CD8+ T<sub>EFF</sub> percentage, which is dependent on the individual immune experience can be changed toward a favorable ratio by the T<sub>Reg</sub> transfer. Remarkably, also in patients with impaired fracture healing the T<sub>EFF</sub>/T<sub>Reg</sub> ratio was higher compared to uneventful healers, validating our finding in the mouse osteotomy model. Our data demonstrate for the first time the key-role of a balanced T<sub>EFF</sub>/T<sub>Reg</sub> response following injury needed to reach successful regeneration using bone as a model system. Considering this strategy, novel opportunities for immunotherapy in patients, which are at risk for impaired healing by targeting T<sub>EFF</sub> cells and supporting T<sub>Reg</sub> cells to enhance healing are possible.

**Keywords:** bone healing, regeneration, effector T cell, regulatory T (Treg) cell, mouse model

## INTRODUCTION

The most promising healing scenario for a damaged tissue would be self-repair, thus to regenerate. Bone is able to heal without scar formation and therefore has a high regenerative capacity (1). Therefore, the healing process after bone injury could serve as a blue print for understanding underlying mechanisms guiding successful tissue regeneration. The majority of bone fractures heal

by endochondral ossification, which is usually divided into five distinct but overlapping stages. Bone healing starts with an initial hematoma formation and inflammation (further divided into pro- [1] and anti-inflammation [2]), subsequent revascularization of the fracture area and cartilage formation (soft callus formation [3]) occurs. Chondrocyte hypertrophy and matrix calcification proceed its replacement by newly formed woven bone (hard callus formation [4]). The final step of the healing cascade is the remodeling [5] of the new formed bone in dependence on the mechanical stimuli during loadbearing. In this generally successful healing of bone, immunological cells play a core role and impact the cascades of regeneration across all of these stages.

Despite its significant endogenous regeneration potential, in a meaningful proportion of humans (10–15%) fracture healing does not succeed and results in delayed union or persistent non-union (2, 3). This still represents a considerable health care problem, specifically in the aging industrial societies (4). After fracture, the initial pro-inflammatory reaction dominated by M1 macrophages and Th1 T cells and their chemokine and cytokine release pattern initiates the infiltration of cells needed for a successful repair process (5, 6). The switch from an initial pro-inflammatory to a subsequent anti-inflammatory state has been proven to be the key to any successful healing (7). There is growing evidence that the adaptive immunity, in particular, T cells, contributes to endogenous regeneration even in the absence of infections (8, 9) by modulating the local cytokine milieu in the fracture gap (8, 10–15) and thus during this early inflammatory phase. Using samples from fracture patients, it was recently shown that a higher amount of CD8+ effector T cells ( $T_{EFF}$ ) is associated with a prolonged pro-inflammatory reaction and impaired fracture repair (16, 17). Accordingly, systemic depletion of CD8+ T cells in a mouse osteotomy model enhanced endogenous fracture regeneration, whereas the adoptive transfer of CD8+ T cells impaired the regeneration process. Therefore, high CD8+ T effector cell percentages are critical for an uneventful healing.

Important counterparts of an unfavorable pro-inflammatory immune response are CD4+ regulatory T cells ( $T_{Reg}$ ). CD4+  $T_{Reg}$  are a highly specialized cell population with immunomodulatory functions and are characterized by the expression of the surface marker CD25 and the transcription factor Forkhead-Box-Protein P3 (FOXP3) (7, 18–21). These cells are essential for the maintenance of the immunological self-tolerance, but also to prevent overwhelming inflammation in response to pathogens and in response to tissue injury. Several studies show that CD4+  $T_{Reg}$  might control osteoclast activity and as result osteoarthritis, and enhance bone formation as well as inhibit bone loss under physiological and pathological conditions (19–21). CD4+  $T_{Reg}$  execute immunomodulatory functions by multiple mechanisms, such as cell-cell contact dependent and independent ones. Their direct impact on the ATP metabolism via the surface molecules CD39 and CD73 results in the generation of strong immunomodulatory ATP derivatives, such as adenosine, and might be of particular interest for their immune-regulatory potency in inflamed tissues. Adenosine inhibits cytokine secretion by and proliferation of

activated  $T_{EFF}$  cells as well as the switch of tissue resident M2 macrophages to pro-inflammatory M1 macrophages (22–24).

With the growing evidences that activated  $T_{EFF}$  negatively impact regenerative processes, their counterparts, the CD4+  $T_{Reg}$  might have a positive regulatory impact on endogenous regeneration. In fact, there are a couple of studies showing their pro-regenerative potency e.g., after myocardial infarction or in regeneration from myocarditis (22).

We hypothesize that CD4+  $T_{Reg}$  possess the potential to reshape and further to rebalance an initial unfavorable and “anti-regenerative” immune status (e.g., created by an increased CD8+  $T_{EFF}$  level) into a pro-regenerative state promoting successful bone healing after fracture.

The role of the adaptive immunity in regeneration was overlooked for a long time, mainly because of using mouse models with a naïve T cell phenotype (23). Conventionally, specific pathogen free (SPF) housing is applied to have more standardized conditions. However, this housing is silencing the adaptive immunity, and even >1 year old SPF mice express an almost naïve immune system lacking  $T_{EFF}$  cells as seen in newborns or babies but not comparable to adult human beings who are permanently exposed to environmental challenges (24). We further hypothesize that immune experienced mice kept under non-SPF, and thus pathogen exposed, conditions are the clinically more relevant model for studying the role of the  $T_{EFF}/T_{Reg}$  balance in bone regeneration.

Within this study the interplay of CD8+  $T_{EFF}$  and CD4+  $T_{Reg}$  was analyzed using immunologically naïve SPF housed mice (low CD8+  $T_{EFF}$ ) and non-SPF housed animals (high percentage of  $T_{EFF}$ ) to mimic the impact of immune experience. Findings were compared to human fracture samples from patients with a known undisturbed healing and a diagnosed delayed healing outcome. Findings demonstrate the significant impact of a balanced  $T_{EFF}/T_{Reg}$  ratio on bone regeneration and at the same time opens novel avenues for personalized immunomodulatory therapies.

## MATERIALS AND METHODS

### Study Design

To evaluate the potential of CD4+  $T_{Reg}$  to reshape an initial unfavorable and “anti-regenerative” immune state into a “pro-regenerative” one, we went into our well-established mouse osteotomy model system. Freshly isolated murine CD4+  $T_{Reg}$  were adoptively transferred into mice prior to osteotomy. The healing outcome was investigated 21 d post-surgery. To have a clinically more relevant mouse model, we included for the immunomodulatory approach an osteotomy model using mice possessing a more experienced adaptive immune system ( $n = 20$ ; control:  $n = 6$ , with adoptive CD4+  $T_{Reg}$  transfer:  $n = 15$  [non-SPF housing]) compared to the classically used naïve mice ( $n = 12$ ; control:  $n = 6$ , with adoptive CD4+  $T_{Reg}$  transfer:  $n = 6$  [SPF housing]). One mouse was excluded from the study due to a non-evaluable healing outcome as a consequence of a failed fixation. In the non-SPF housed mice, the CD8+  $T_{EFF}$  to CD4+  $T_{Reg}$  ratio was evaluated by flow cytometry pre- as well as post-osteotomy to investigate the interplay of the cell

ratio and the healing outcome (Figure S1: Study design of the mouse experiment).

We included data from human fracture patients to confirm the murine findings in a patient setting. Thirty-five patients (aged 19–77 years, 19 male, and 16 female) were included in this study. Due to the assessment of immunological parameters, patients with human immunodeficiency virus infection, hepatitis infection, ongoing, or past (within 5 years) malign diseases/treatments were excluded from the study. To ensure a similar post-surgery physiotherapeutically mobilization, patients with polytrauma or several fractures (>2 fractures) were also excluded from the study (see Table 1, Tables S1, S2). Based on the radiological data, fracture patients were divided into normal ( $n = 23$ ) and impaired ( $n = 12$ ) healing fractures. To analyze the interplay of the CD8+ T<sub>EFF</sub> to CD4+ T<sub>Reg</sub> ratio and the healing outcome, peripheral blood samples were taken prior to surgery, and the T<sub>EFF</sub>/T<sub>Reg</sub> was analyzed by flow cytometry. In addition, the cell ratio was also investigated in fracture hematoma samples, taken during the surgery.

## Characteristics of the Animal Model Used for Immune Intervention Approaches

Female C57BL/6 mice (Charles River Laboratories, Wilmington, USA) of an age of 12 weeks were used for the animal experiments. Mice were kept in small groups under specific pathogen free (SPF) or non-SPF (area in the animal facility without an additional barrier and filtered air supply for the mice cages) housing conditions. A controlled temperature ( $20 \pm 2^\circ\text{C}$ ) and a 12 h light/dark cycle were present. Food and water were available *ad libitum*. All animal experiments were approved by the local legal representatives (Landesamt für Gesundheit und Soziales Berlin: G0008/12; T0119/14; T0249/11) and done accordingly to the guidelines of the Animal Welfare Act, the National Institutes of Health Guide for Care and Use of Laboratory Animals, and the National Animal Welfare and ARRIVE Guidelines. Health monitoring followed the FELASA guidelines for both housing conditions—no health risks were monitored for those animals housed under non-SPF conditions.

CD4+ T<sub>Reg</sub> were enriched by cell sorting (see below) and adoptively transferred ( $5\text{--}8 \times 10^5$  cells) via the tail vein prior to surgical intervention. Mice were randomly allocated to the treatment groups.

**TABLE 1** | Characterization of the patients.

Parameter	Impaired healing patients ( $n = 12$ )	Normal healing patients ( $n = 23$ )	Significance
Age (y)	$54.58 \pm 12.7$	$52.17 \pm 13.3$	0.6
Sex (male/female)	7/5	12/11	0.7
Height (m)	$1.71 \pm 0.09$	$1.74 \pm 0.09$	0.3
Weight (kg)	$79.63 \pm 18.52$	$76.43 \pm 15.79$	0.6
BMI	$27.3 \pm 5.9$	$25.2 \pm 4.2$	0.2

## Surgical Approach and Performing the Mouse Osteotomy

A non-critical sized osteotomy was set in the left femur of the mice as described before (6). In short, mice were anesthetized by inhalation of isoflurane and received a subcutaneous injection of the analgesic Buprenorphine (0.03 mg/kg) and of the antibiotic Clindamycin (45 mg/kg). After shaving the surgery field and disinfection, a longitudinal cut of the skin was performed. The femur was bluntly exposed and the external fixator, consisting of four pins and a bar (RISystem, Davos, Switzerland), was mounted on the lateral side of the femur. An osteotomy of 0.7 mm was created between the two middle pins using a wire saw. The skin was sutured, and the mice were brought back into their cages. As post-operative analgesia, tramadol hydrochloride (25 mg/l) was added to the drinking water for 3 days post-surgery.

## Isolation of Murine Regulatory T Cells for Immunotherapy

Murine CD4+ regulatory T cells (T<sub>Reg</sub>) were isolated by magnetic activated cell sorting (MACS) from pooled cells derived from the spleen and the lymph nodes: inguinal nodes, axillary nodes, brachial nodes, and mesenteric nodes. A single cell suspension was prepared and erythrocytes were lysed. The isolation procedure was carried out with the CD4+ T<sub>Reg</sub> isolation kit (Miltenyi Biotec GmbH, Bergisch Gladbach, Germany), according to the manufactures instructions. Briefly, the cell suspension was incubated with a biotin-labeled antibody mix to stain all non-CD4+ T cells. Afterwards,  $\alpha$ -biotin magnetic beads, as well as a PE-labeled  $\alpha$ -CD25 antibody were added to the cells. After incubation, cells were washed (8 min, 1,500 rpm,  $4^\circ\text{C}$ ), resuspended in MACS buffer (1x PBS + 0.5% BSA + 2 mM EDTA) and transferred to an LD column (Miltenyi Biotec GmbH, Bergisch Gladbach, Germany), which was placed in a magnetic field. The flow through was collected, washed, resuspended in MACS buffer and incubated with an  $\alpha$ -PE antibody. Cells were washed, resuspended in MACS buffer and transferred to an MS column (Miltenyi Biotec GmbH, Bergisch Gladbach, Germany), which was placed in a magnetic field. CD4+ T<sub>Reg</sub>, which were kept in the magnetic field in the column, were flushed out, washed and counted. Subsequently, CD4+ T<sub>Reg</sub> were isolated with a purity of  $\geq 85\%$ .

## Regulatory T Cell Suppression Assay

The suppressive capacity of freshly isolated CD4+ T<sub>Reg</sub> was tested in a co-culture setup with CD4+CD25- responder T cells (T<sub>Responder</sub>). T<sub>Responder</sub> were labeled with a cell proliferation dye (Cell Proliferation Dye (CPD) eF450, eBioscience, San Diego, USA) following the protocol. In short, MACS isolated T<sub>Responder</sub> were washed (8 min, 1,500 rpm, RT) twice with PBS and resuspended in a solution consisting of pre-warmed PBS and a 10 mM CPD eF450 solution to a final concentration of  $10 \times 10^6$  cells/ml. Cells were incubated for 20 min at RT in the dark and the staining was stopped by the addition of ice cold cell culture media [RPMI 1640 (Biochrom AG, Berlin, Germany) + 10% FBS superior (Biochrom AG, Berlin, Germany) + 1% penicillin/streptomycin (Sigma-Aldrich Chemie

GmbH, München, Germany), and 50  $\mu\text{M}$   $\beta$ -Mercaptoethanol (Sigma-Aldrich Chemie GmbH, München, Germany)]. Cells were incubated for 5 min on ice, washed three times with pre-warmed cell culture media and counted. For the suppression assay,  $0.75 \times 10^5$  labeled  $T_{\text{Responder}}$  were co-cultured in cell culture media with (1)  $1.5 \times 10^5$  or (2)  $0.15 \times 10^5$   $\text{CD4}^+$   $T_{\text{Reg}}$  in a 96 well plate.  $T_{\text{Responder}}$  were also cultured alone. In order to stimulate the proliferation of  $T_{\text{Responder}}$ ,  $\alpha$ -CD3 and  $\alpha$ -CD28 (both eBioscience, San Diego, USA) were plate-bound (each 5  $\mu\text{g}/\text{ml}$ ) to the wells before adding the co-culture setups. After 2–3 days, cells were harvested, and the proliferation of the  $T_{\text{Responder}}$  was analyzed by flow cytometry. The suppression of the  $\text{CD4}^+$   $T_{\text{Reg}}$  was calculated based on the proliferation of the  $T_{\text{Responder}}$  which were cultured alone. Their proliferation was set to 100, and the proliferation of the co-cultured  $T_{\text{Responder}}$  was calculated relative to it. Finally, the percentage of suppression was defined as 100 minus the (relative) proliferation.

## Flow Cytometry Analysis of Murine Immune Cells in Tissue Samples

The sample preparation for flow cytometry was done as follows: from the spleen, the bone marrow, and the lymph nodes, single cell suspensions were prepared. The spleen was cut into small pieces and carefully pushed through a cell strainer. For the bone marrow, the ends of the bones were cut and the marrow was flushed out with a syringe. Afterwards, the bone marrow cells were also carefully pushed through a cell strainer. Lymph nodes were directly pushed through a cell strainer. All single cell suspensions were washed in PBS, and the erythrocytes were lysed. Blood samples were centrifuged (10 min, 2,000 rpm, RT), the supernatant was removed, and erythrocytes were lysed. Cells were washed in PBS (10 min, 1,500 rpm, 4°C) and stained. Lysed and washed cells were resuspended in PBS and incubated with a LIVE/DEAD staining kit (Thermo Fisher Scientific, Waltman, USA) for 30 min on ice. For the evaluation of the adoptive  $\text{CD4}^+$   $T_{\text{Reg}}$  transfer (1 and 21 days post-osteotomy) and the amount of  $\text{CD4}^+$   $T_{\text{Reg}}$  in the harvested tissues after 21 days of healing, cells were washed, resuspended in PBS/BSA (1x PBS + 1% BSA and 0.1% sodium azide) and stained with the following antibody mix for 20 min on ice:  $\alpha$ -CD3 PerCP (BioLegend, San Diego, USA),  $\alpha$ -CD4 AF700 (eBioscience, San Diego, USA) and  $\alpha$ -CD25 APC (BioLegend, San Diego, USA). For the evaluation of the  $\text{CD4}^+$  and  $\text{CD8}^+$  effector T cell subset, cells were washed, resuspended in PBS/BSA and stained with the following antibody mix for 20 min on ice:  $\alpha$ -CD3 PerCP (BioLegend, San Diego, USA),  $\alpha$ -CD4 AF700 (eBioscience, San Diego, USA),  $\alpha$ -CD8 eF450 (eBioscience, San Diego, USA),  $\alpha$ -CD44 PE-Cy7 (Becton Dickinson Bioscience, Heidelberg, Germany),  $\alpha$ -CD62L APC (BioLegend, San Diego, USA) and  $\alpha$ -CD25 APC (BioLegend, San Diego, USA). Cells were washed, resuspended, and either fixed for 20 min at RT with a 2% formaldehyde solution (evaluation of adoptive  $\text{CD4}^+$   $T_{\text{Reg}}$  transfer) or permeabilized with a fixation/permeabilization buffer (eBioscience, San Diego, USA) for 1 h on ice (evaluation of the amount of  $\text{CD4}^+$   $T_{\text{Reg}}$  after 21 days). Cells were washed twice with permeabilization buffer (eBioscience, San Diego, USA), resuspended and incubated for

30 min on ice with  $\alpha$ -Foxp3 FITC (eBioscience, San Diego, USA). After fixation and permeabilization, cells were washed, resuspended and analyzed with the LSR II flow cytometer (Becton Dickinson Bioscience, Heidelberg, Germany) (for the gating strategy please refer to **Figure S2**).

## Micro-Computed Tomography of Osteotomized Mouse Bones

To evaluate the formation of newly formed bone,  $\mu\text{CT}$  analyses were performed with the osteotomized bones 21 days post-surgery. The harvested bones were scanned in a  $\mu\text{CT}$  Viva 40 (SCANCO Medical AG, Brüttisellen, Switzerland). The volume of interest (VOI) included 190 slices around the former osteotomy gap. The following parameters were used for the scan: 10.5  $\mu\text{m}$  voxel size, 55 keVp peak voltage energy and an applied current of 145  $\mu\text{A}$ . In order to be able to distinguish between non-mineralized and mineralized bone, a gray value threshold was used (25). A defined threshold of 396.9 mg hydroxyapatite per  $\text{cm}^2$  identified mineralized bone.

## Patients and Study Protocol

The study was performed in compliance with the International Conference on Harmonization Guidelines for Good Clinical Practice and the Declaration of Helsinki. All patients participated with a written informed consent, and the study was approved by the Institutional Review Board (IRB) of the Charité – Universitätsmedizin Berlin (IRB approval EA2/096/11). All patients received a complete study follow up rate including all clinical investigation time points and radiological assessments. Moreover, all patients were matched according to age, sex, fracture type and initial surgical treatment strategy. The demographic and clinical characteristics of the included patients are shown in **Table 1**, **Tables S1**, **S2**. To monitor the fracture healing process and in consensus with established clinical examination time points, the patients were investigated pre-surgery and after 4–6, 12, 17–19, 24, and 52 weeks. Regarding the fracture treatment, the only significant difference between the healing groups was the number of surgical interventions required ( $p = 0.003$ ; **Table S2**).

## Healing Classification and Data Collection

*Time-dependent criteria:* A fracture was categorized as impaired healing when it was not completely healed after 17–19 post-operative weeks based on the callus formation. *Radiological criteria:* Different criteria were applied to identify an impaired healing fracture by radiological analyses: (A) incomplete fracture healing or the absence of visible bone consolidation on a simple X-ray after 17–19 post-operative weeks; (B) the presence of a resorption zone or incomplete callus formation; (C) incomplete bridging, which means one to three cortices bridged; or (D) no bridging, which means no cortex is bridged.

Every patient underwent consecutive x-ray analyses to assess the stability of the implant and to observe the fracture gap throughout the study time. Appraisal of x-rays was performed by three independent, blinded specialists (two orthopedic surgeons and one radiologist), to ensure the healing outcome and the classification of patients as shown in **Table 1**. To fulfill the

definition of impaired healing, patients had to meet one or more of the time dependent- and/or radiological criteria as stated above (26–29).

## Flow Cytometry Analysis of Human Blood Samples to Characterize Immune Status in Fracture Patients

Blood samples were taken before the surgery after 15 min rest in a supine position. All blood samples were immediately moved into a dark, air-conditioned room, and sent to the laboratory within 2 h. Additionally, plasma and serum samples were collected in aliquots and frozen at  $-80^{\circ}\text{C}$ . Full blood count and standard clinical variables (erythrocytes, hemoglobin, hematocrit, thrombocytes, creatinine, sodium, potassium, urea, chloride, GPT, GOT, gamma-GT, TSH, CRP) were measured immediately in plasma and serum samples according to the laboratory standard operating procedures.

To evaluate the adaptive immunity of the patients, we applied our recently developed and extensively validated pre-cocktailed dried DuraClone T cell panels (Beckman Coulter), including the “T cell panel” CD45RA, CCR7, CD28, PD1, CD27, CD4, CD8, CD3, CD57, CD45, and “regulatory T cell panel” (Beckman Coulter), including CD45RA, CD25, CD127, CD39, CD4, FOXP3, CD3, CD45 were used. Flow cytometry analysis was performed using the BC NAVIOS 10/3 flow cytometer and data were analyzed using BC Kaluza analysis software (Beckman Coulter).

## Human Genomic DNA (gDNA) Purification for Epigenetic Analysis

Frozen human fracture hematoma samples ( $n = 8$ ) were thawed in a  $37^{\circ}\text{C}$  water bath and further kept on ice. To dissolve the hematoma samples, Clotspin<sup>®</sup> Baskets from Qiagen were used according the manufacturing protocol: Purification of archive-quality gDNA from clotted whole blood using Clotspin<sup>®</sup> Baskets and the Gentra<sup>®</sup> Puregene<sup>®</sup> blood kit provided by Qiagen. All protocol steps were followed according to the manufacturer's instructions. Steps included the usage of isopropanol and Glycogen Solution (20 mg/ml from Qiagen) and washing of gDNA pellets with 70% ethanol. gDNA was further air dried at room temperature until no remaining fluids remained. gDNA was incubated with 500  $\mu\text{l}$  DNA hydration solution provided within the kit ([www.qiagen.com/literature/handbooks/default.aspx](http://www.qiagen.com/literature/handbooks/default.aspx)). gDNA was incubated at  $65^{\circ}\text{C}$  until it was dissolved.

gDNA quality and quantity were confirmed using the NanoDrop-ND-1000 system (PEQLAB GmbH). Samples were stored at  $-80^{\circ}\text{C}$  until further experiments.

## Epigenetic qPCR Analysis (Patients)

Purified genomic DNA from the fracture hematoma ( $n = 8$ ) was converted using the EpiTect Fast Bisulfite Conversion Kit (Qiagen) following the manufacturer's instructions. CD3+, T<sub>Reg</sub>-specific and CD8B+ T cell-specific epigenetic qPCR analyses were performed as previously described (30–32).

## Statistics

For the statistical evaluation of the data, the program SPSS (Version 22; IBM Deutschland GmbH, Ehningen, Germany) was used. Unless otherwise stated, all data were represented as means  $\pm$  SD.

### Human Data

The Levene test was used to assess the homogeneity of variances of the data for the indicated groups and the data were then analyzed using the unpaired Student's *t*-test (two groups).

### Mouse Data

Due to the small sample sizes, a normal distribution of the data was excluded. Therefore, the Mann-Whitney *U*-test was used as statistical test. If more than two samples were compared, the significance value *p* was corrected by using the Bonferroni correction. Data were seen as statistically significant if  $p \leq 0.05$  or if  $p \leq 0.05/n$  ( $n =$  number of compared samples) (Bonferroni corrected data). Data are presented as scatter or boxplot graphs. Usage of the Bonferroni correction is indicated in the respective figures.

## Data and Materials Availability

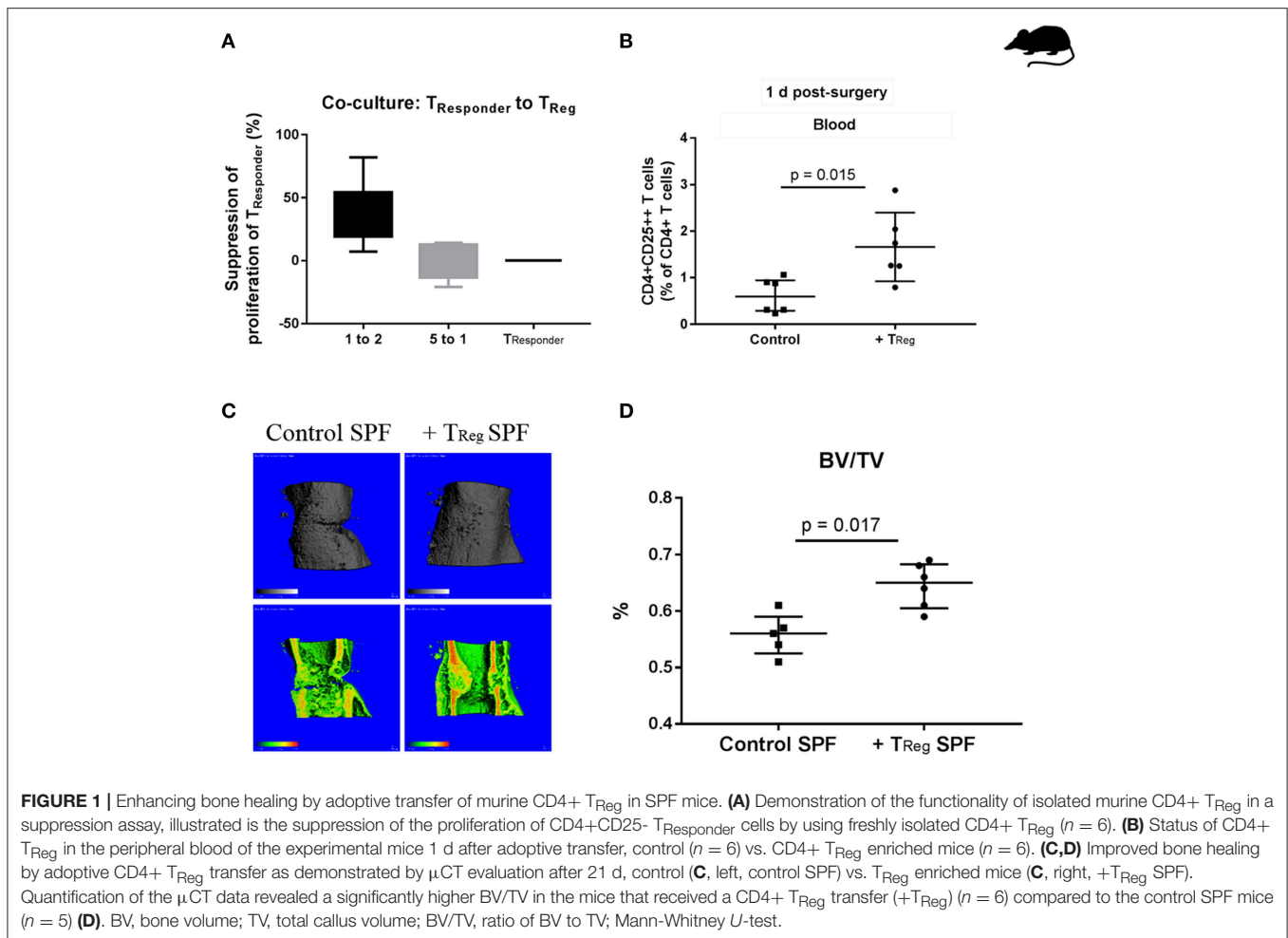
All data needed to evaluate the conclusions in the paper are presented within the paper and/or in the **Supplementary Materials**. Additional data related to this paper may be requested from the corresponding author.

## RESULTS

In a small cohort of patients, we previously showed that CD57+ CD8+ T<sub>EMRA</sub> cells were markedly elevated in peripheral blood of patients suffering from an impaired bone healing (17). T cell receptor stimulation or IL-12 (bystander activation) can trigger T<sub>EMRA</sub> cells to produce inflammatory cytokines, like IFN $\gamma$  and TNF $\alpha$ , without the need of antigen-presenting cells (independent on co-stimulatory signals via CD28 or CD40L), making those ideal candidates for enhancing intra-tissue inflammation if they accumulate after injury. It is well-established that T<sub>Reg</sub> play a crucial role in controlling immune response at multiple levels to prevent undesired immune reactivity, such as auto/allo-immunity and infection-related pathogenesis (33). There is increasing evidence that they are also pivotal in controlling regenerative processes (34). Therefore, we wondered whether adoptive transfer of CD4+ T<sub>Reg</sub> might be a relevant option to enhance fracture healing. To address this we applied a well-defined mouse osteotomy model (35) and adoptively transferred CD4+ T<sub>Reg</sub>.

## Application of CD4+ Regulatory T Cells as Potential Agent to Improve Bone Fracture Healing in SPF Mice

Prior to adoptively transferring the CD4+ T<sub>Reg</sub>, we tested the functionality of *ex vivo* enriched murine CD4+ CD25++ Foxp3+ T<sub>Reg</sub>. Using an established CD4+ T<sub>Reg</sub> suppression assay in which freshly isolated CD4+ T<sub>Reg</sub> (purity  $\geq 85\%$ , **Figure S3**)



and stimulated T<sub>Responder</sub> (non-T<sub>Reg</sub>) cells were co-cultured, we confirmed their suppressive properties (Figure 1A).

In order to confirm the successful transfer of the CD4+ T<sub>Reg</sub> their fate was analyzed in the recipient mice. After infusion of CD4+ T<sub>Reg</sub> into the tail vein of C57BL/6 mice prior to osteotomy, a blood sample for counting circulating CD4+ T<sub>Reg</sub> was taken 1 day (1 d) after surgery. A significantly higher percentage of CD4+CD25++ T cells (representing CD4+ T<sub>Reg</sub>) was found in animals that received an adoptive transfer in comparison to control mice (Figure 1B) illustrating the efficacy of adoptive transfer of T<sub>Reg</sub> ( $p = 0.015$ ).

After proving the feasibility of isolation, transfer and functionality of adoptively transferred CD4+ T<sub>Reg</sub>, we tested our hypothesis that these cells had a positive impact on bone healing.

Initially we used SPF mice (12 weeks), where skeletal growth was nearly completed and peak bone mass has almost been reached (36). Further, an osteotomy model was used that did not result in complete healing within 21 days and thus allows to detect improvements in healing in comparison to control mice. As expected, all control mice expressed a healing with a partly visible osteotomy gap, as documented by  $\mu$ CT data (Figure 1C). The experiment confirmed our hypothesis showing improved

bone healing at 21 d as indicated by a significantly increased ratio of bone volume to total callus volume (BV/TV) in the osteotomized femora of mice that received an adoptive transfer of CD4+ T<sub>Reg</sub> (Figure 1D;  $p = 0.017$ ).

In summary, the elevation of the CD4+ T<sub>Reg</sub> in recipient mice showed a positive effect on bone healing. However, these mice were kept under the usual SPF housing conditions resulting in a “naïve” T cell system. In contrast, human beings are permanently exposed to environmental antigens shifting their T cell composition to higher T<sub>EFF</sub> cell counts in an age-dependent manner (32). Therefore, alternative murine osteotomy models are required that better reflect the situation in human patients.

### Establishment of a Clinically More Relevant Murine Model Applying Non-SPF Housing to Generate an “Experienced” T Cell Immunity Reflected by Enhanced T<sub>EFF</sub> Cell Counts

Recently, we established a new model of non-SPF housing conditions inducing a fast switch to a more “experienced” T cell immunity with enhanced levels of T<sub>EFF</sub> cells (24, 37). Briefly,

mice were transferred toward a non-barrier housing exposing them to environmental pathogens. Thus, the environmental microbial exposure was raised in comparison to the SPF housed mice and the adaptive immune system was challenged. TNAIVE/TMEMORY/T<sub>EFF</sub> counting in a blood sample before osteotomy allows individual proof of “immune aging,” of immune experience. It is worth mentioning that after 5 years of experience with this model, no clinical abnormality was reported in these mice nor has any serological disease status been recorded in this cohort outside of an SPF barrier.

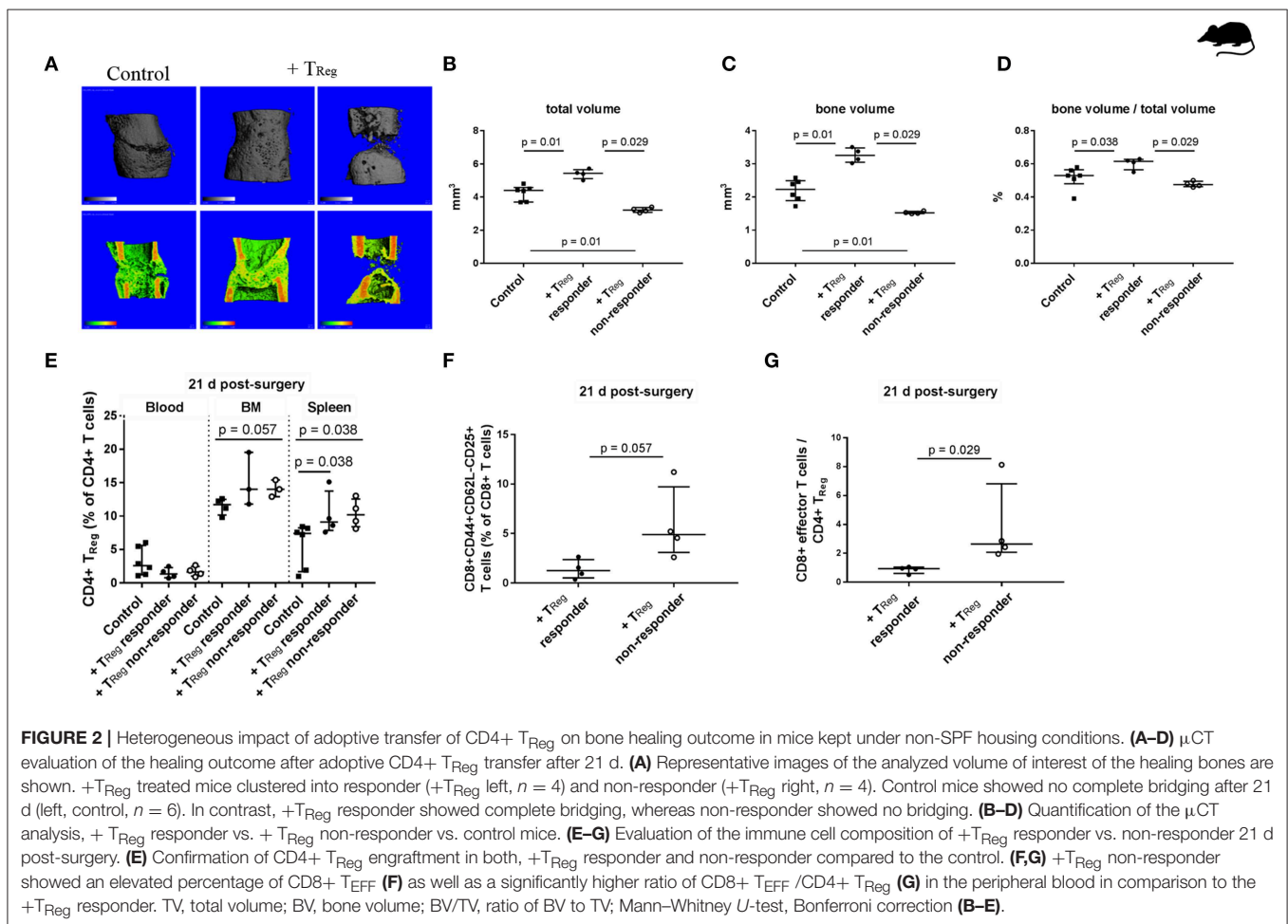
After a minimal exposure of 4 weeks, the immune cell composition in these non-SPF housed animals was analyzed and compared to that of SPF housed animals. Although there is a significant individual variation, mice developed a higher level of T<sub>EFF</sub> (both CD4+ and CD8+) in immune tissues, e.g., spleen. Thus, the exposure led to an altered CD8+ T<sub>EFF</sub>/CD4+ T<sub>Reg</sub> ratio in non-SPF mice compared to SPF mice (spleen:  $p = 0.008$ ; **Figure S4**).

In the next step, we asked whether an adoptive transfer of CD4+ T<sub>Reg</sub> could enhance bone healing in these mice with a more experienced immune system and a consecutively higher percentage of CD8+ T<sub>EFF</sub>.

## Adoptive Transfer of CD4+ T<sub>Reg</sub> in Mice With an Experienced Adaptive Immunity Results in Heterogeneous Bone Healing Outcome

Similar to the T<sub>Reg</sub> transfer in SPF housed animals, we used mice with an experienced adaptive immunity to evaluate the therapeutic potential of CD4+ T<sub>Reg</sub> to further bone regeneration. Animals received CD4+ T<sub>Reg</sub> isolated from pooled donor mice to prevent heterogeneity of individual T<sub>Reg</sub> donors (**Figure 2A**; +T<sub>Reg</sub>). In contrast to the clear data received from the SPF housed mice, non-SPF housed animals displayed a heterogeneous clustered healing outcome after CD4+ T<sub>Reg</sub> transfer and osteotomy (**Figures 2A–D**). Remarkably, in half of the mice, referred to as +T<sub>Reg</sub> responders, healing was significantly enhanced compared to control animals, illustrated by an increased TV ( $p = 0.01$ ), BV ( $p = 0.01$ ) and ratio of BV to TV ( $p = 0.038$ ). In contrast, in the other half of the mice, the healing was not improved, but even showed a worsening (named “+T<sub>Reg</sub> non-responders”) with significantly reduced TV ( $p = 0.01$ ) and BV ( $p = 0.01$ ).

In order to determine the reason behind the distinct healing differences of +T<sub>Reg</sub> responders and non-responders several



possibilities were analyzed. Differences in the functionality of the transferred  $T_{Reg}$  can be ruled out as we used pooled cells from several donor animals and saw responders and non-responders among the recipients of the same cell pool. Recipients were chosen from the same cage and randomly placed within the treatment groups—no correlation with responder or non-responder were found. Up to four animals were operated on at each surgery day and no correlation with the surgical sequence was found. Subsequently, we analyzed whether adoptively transferred  $T_{Reg}$  showed reduced engraftment in the non-responder mice. However, as shown in **Figure 2E**, the number of  $T_{Reg}$  detectable at day 21 post  $T_{Reg}$  infusion and osteotomy did not show a heterogeneous distribution and non-responder and responder mice showed comparably elevated  $T_{Reg}$  level.

Interestingly, upon analysis of the immune cell composition higher frequencies of CD62L-CD44+CD25+ activated CD8+  $T_{EFF}$  cells were found in the non-responder animals, demonstrating that the immune experience within the group of mice even within the same cage was highly individual. A significantly elevated  $T_{EFF}/T_{Reg}$  ratio in peripheral blood of + $T_{Reg}$  non-responder vs. responder mice ( $p = 0.029$ ; **Figures 2E,G**), indicating that the  $T_{Reg}$  treatment was not sufficient to reshape the negative effect of the CD8+ $T_{EFF}$  cells in the non-responder animals.

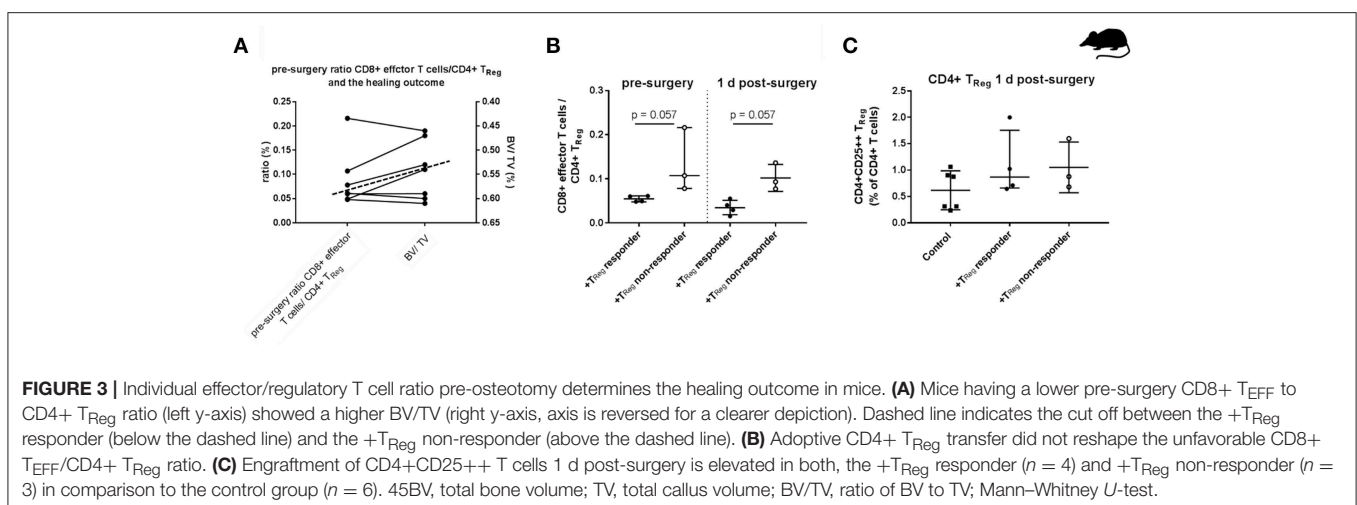
To test this assumption, we analyzed this ratio of  $T_{EFF}/T_{Reg}$  pre-operatively in the peripheral blood of another cohort of seven non-SPF housed mice. We performed the adoptive CD4+  $T_{Reg}$  transfer, set the osteotomy and evaluated the healing outcome after 21 d as described before. Within this second cohort of osteotomized mice the heterogeneous healing outcome of the previous experiment was confirmed. The healing outcome 21 days after osteotomy again showed + $T_{Reg}$  responder and + $T_{Reg}$  non-responder. Four mice could be clearly categorized as + $T_{Reg}$  responders (good healing outcome: bridging of the cortices in progress) and three mice were classified as + $T_{Reg}$  non-responders (poor healing outcome: no bridging of the cortices). Based on this grouping, we compared values

of the pre-surgery CD8+ $T_{EFF}/CD4+T_{Reg}$  cell ratio with the  $\mu$ CT evaluation after 21 d (BV/TV) (**Figure 3A**). Notably, all four responder mice had a pre-surgery ratio of CD8+ $T_{EFF}/CD4+T_{Reg}$  of  $<0.07$  (below the dashed line) which consistently correlated with a higher BV/TV in comparison with the non-responder mice which showed a ratio of 0.08–0.23 (above the dashed line). We further evaluated this CD8+ $T_{EFF}/CD4+T_{Reg}$  ratio at 1 d post-surgery. Remarkably, CD4+ $T_{Reg}$  transfer could not reverse the unfavorable ratio in the non-responder mice (**Figure 3B**). Again, we could exclude unsuccessful engraftment of the adoptively transferred CD4+ $T_{Reg}$  as shown in **Figure 3C**.

The presented data suggest that successful bone regeneration depends on the balance between CD8+  $T_{EFF}/CD4+T_{Reg}$ . The cut off between + $T_{Reg}$  responder and + $T_{Reg}$  non-responder however is not pronounced. In order to confirm the results from the mouse experiment that the CD8+  $T_{EFF}/CD4+T_{Reg}$  ratio is a decisive factor for the bone healing outcome the immune cell composition in a patient cohort with a known healing outcome was analyzed.

## Elevated CD8+ $T_{EMRA}$ Level in the Peripheral Blood of Patients With Impaired Healing After Bone Fracture

In accordance with the mouse experiment, a patient cohort with a high CD8+  $T_{EFF}$  level should be included in the experiment to confirm our mouse data. Therefore, a new patient cohort was recruited applying our previously published (17) strategy to define delayed healing by functional and radiological methods (**Figures 4C,D**). In a first step elevated CD8+  $T_{EFF}$  level were confirmed in the new patient cohort, the cells were further subtyped as  $T_{EMRA}$  cells CD45+CD3+CD8+CD57+CD28- (**Figure 4A**). The impaired healing group showed an almost three times higher proportion of circulating CD45+CD3+CD8+CD57+CD28-  $T_{EMRA}$  cells ( $p < 0.001$ ).



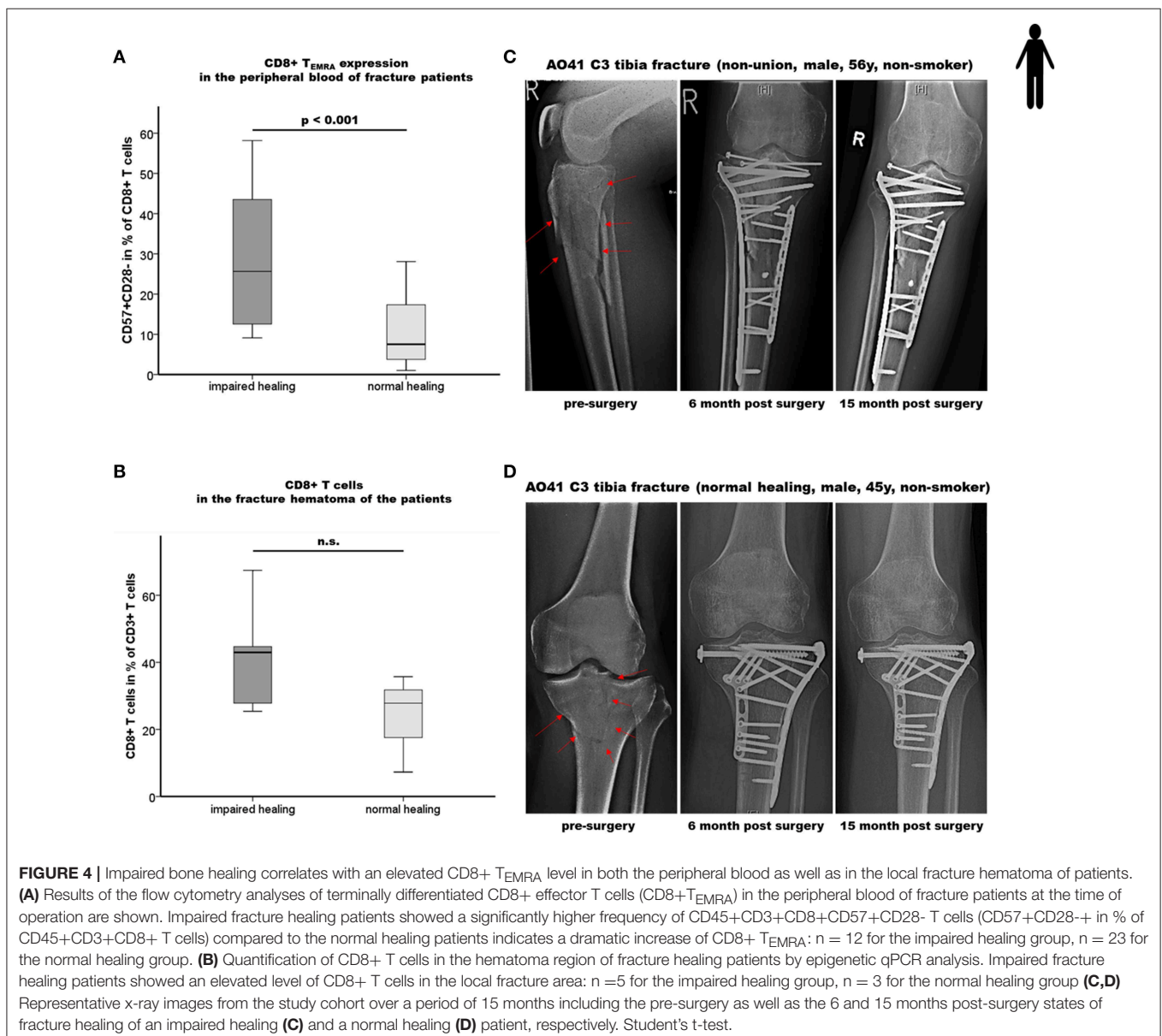


## Enhanced Accumulation of CD8+ T Cells in the Fracture Hematoma of Patients With Impaired Fracture Healing

To further confirm the effect of the systemically found elevated  $T_{EMRA}$  cell count the fracture hematoma of these patient was evaluated for these cells. To address this issue, we applied a recently developed, easily applicable advanced technology to analyze immune cell subset composition from tissue samples based on CD3<sup>+</sup>,  $T_{Reg}$ - and CD8<sup>+</sup>-specific epigenetic pattern at tissue-derived DNA (30–32). Fracture hematoma composition does not simply reflect the repertoire of blood leukocytes but is enriched by  $T_{EFF}$  cells attracted actively to the fracture environment. The almost two times higher levels of CD8+ T cells in the hematoma of impaired vs. normal healing patients support the hypothesis that CD8+  $T_{EFF}$  accumulate in the fracture

hematoma, although statistical significance was not yet reached as only a low number of fracture hematoma samples was available for the analysis (Figure 4B).

In a next step, we analyzed the observed tight interconnectivity between the CD8+  $T_{EFF}$  and CD4+  $T_{Reg}$  ratio and the bone healing outcome in our human patient cohort. Interestingly, we observed an elevated percentage of CD4+  $T_{Reg}$  in the peripheral blood of impaired healing patients. This could be interpreted as an intrinsic effort to counteract the higher CD8+  $T_{EFF}$  level that was however, not able to reverse the negative impact of the high CD8+  $T_{EMRA}$ /CD4+  $T_{Reg}$  ratio in those patients (Figure 5A;  $p < 0.001$ ). This result is in accordance with the data of the mouse experiment. Remarkably, this imbalance of CD8+  $T_{EFF}$ /CD4+  $T_{Reg}$  was also reflected in the fracture hematoma (Figure 5B). Impaired fracture healing



patients showed a significantly higher CD8+ T cells/CD4+ T<sub>Reg</sub> ratio without overlap between the two groups, ranging from 3.0 to 6.0 and 1.2 to 2.7 in patients who showed an impaired and normal healing outcome, respectively ( $p = 0.043$ ).

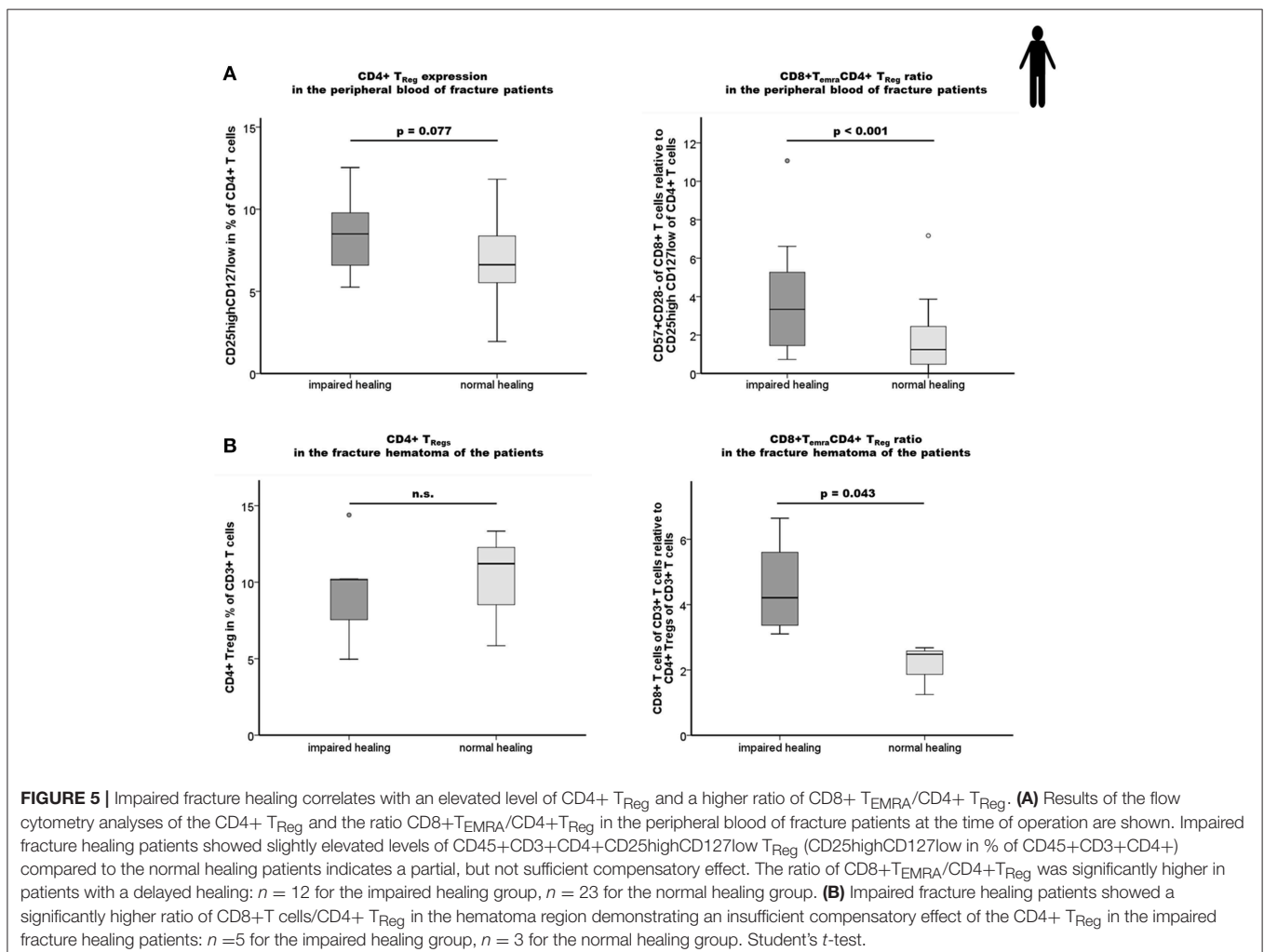
These findings demonstrate that the ratios of CD8+ T<sub>EFF</sub> to CD4+ T<sub>Reg</sub> in the peripheral blood are mirrored by those within the fracture hematoma. This cellular correlation between the periphery and the site of injury further highlights the significance of the balance of pro-inflammatory CD8+ T<sub>EFF</sub> to anti-inflammatory CD4+ T<sub>Reg</sub> for a successful bone healing process.

## DISCUSSION

Our study demonstrates the relevance of the T cell subset composition for regeneration using bone healing in a murine osteotomy model as well as in patients. Enhanced CD8+ T<sub>EFF</sub>/CD4+ T<sub>Reg</sub> ratios both in peripheral blood and locally in the fracture hematoma were associated with an impaired bone healing outcome.

The data indicates that the T<sub>EFF</sub>/T<sub>Reg</sub> ratio could be a predictive biomarker for bone healing. However, as flow cytometry analysis from hematoma is hardly applicable for the clinical routine, we applied a recently developed fast epigenetic method allowing T cell subset quantification in tissue specimen (30–32) that could be further developed into an intraoperative diagnostic tool. This would enable a stratification of patients in potential need of additional treatments at the time of the initial fracture treatment.

This study clearly demonstrated that the model used for an experimental evaluation of a hypothesis should be carefully considered. While the results in the SPF housed mice indicated that a treatment enhancing T<sub>Reg</sub> percentages shows 100% healing enhancement changing the model to one with a higher immune experience (and thus a model that is closer to the patient situation) changed this result to only 50% healing success. What is even more alarming is that the other 50% instead of showing an unchanged healing outcome revealed a significantly impaired healing. This indicates that in cases of an unbalanced immune response otherwise supportive immune cells can turn into detrimental cells for the healing process.



As in human beings, non-SPF housed mice, even if kept in the same cage, show an intragroup heterogeneity regarding the  $T_{EFF}/T_{Reg}$  balance in the blood and secondary immune organs. In mice with very high  $T_{EFF}/T_{Reg}$  ratio the adoptive transfer of  $T_{Reg}$  could not rescue this imbalance measured immediately after cell transfer in blood samples as well as at the end of 21 d follow-up in immune organs even though engraftment was confirmed. This unsuccessful rebalancing of the  $T_{EFF}/T_{Reg}$  ratio was associated not only with a lack of benefit of the  $T_{Reg}$  transfer but worsened the healing even more. For our immune-experienced mice, we applied a relative short exposure time of 4 weeks in the non-SPF housing. Therefore, the observed findings and differences in the non-SPF mice in comparison to the SPF mice are even more astonishing. In comparison, the changes in the adaptive immune system visible after 4 weeks of exposure were not as pronounced as seen in an aged human being. Therefore, the ratios in the mouse model cannot be transferred toward patients.

How can  $T_{EFF}$  cells affect bone healing? In fact, we could recently show (17) that  $CD8+ T_{EFF}$  produce high amounts of inflammatory cytokines, such as  $IFN\gamma$  and  $TNF\alpha$  even without costimulatory signals. Their strong inflamed tissue homing properties allow them to deliver those cytokines at fracture sites. Although some local inflammation is beneficial for triggering endogenous regeneration post-fracture (38), too much of “a beautiful thing” can have worsening effects, as shown by inhibition of differentiation of osteogenic precursors in the presence of supernatants of  $CD8+ T_{EFF}$ , an effect that could be converted by neutralizing  $TNF\alpha$  and  $IFN\gamma$  (17).

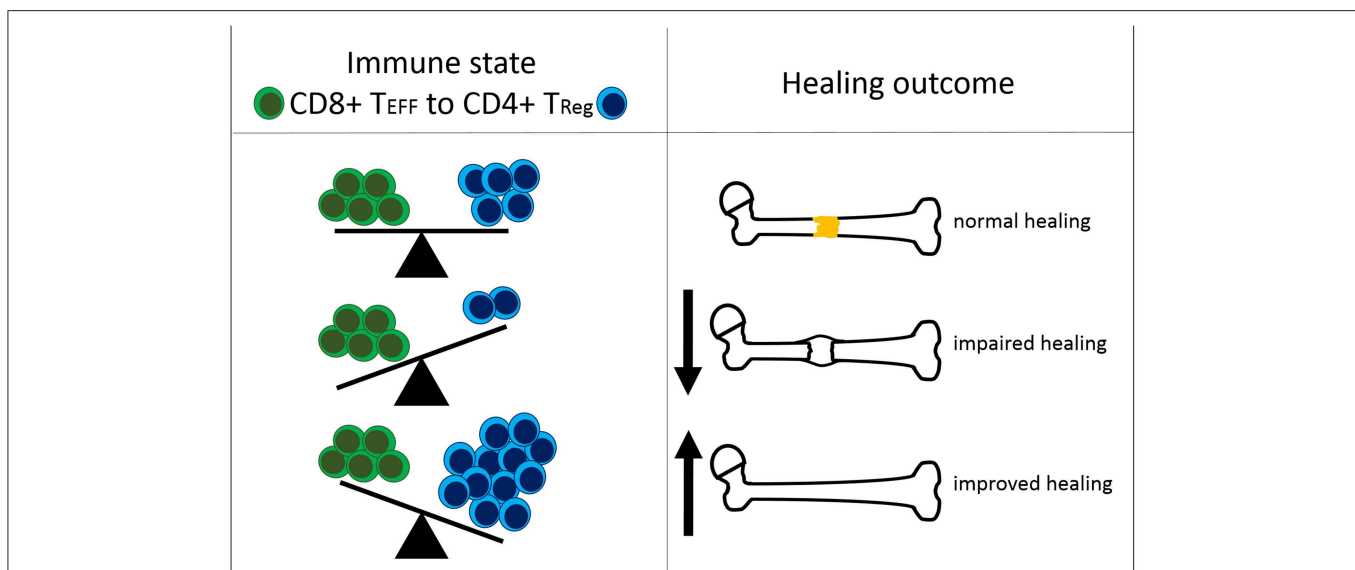
How might  $T_{Reg}$  control the  $T_{EFF}$  response in at least half of the immune-experienced mice with pre-established  $T_{EFF}$  cells? The positive effects of  $T_{Reg}$  might be explained by the prevention of an imbalanced  $T_{EFF}/T_{Reg}$  ratio as a result of  $T_{Reg}$  blocking

memory/effector T cells at multiple checkpoints (34):  $T_{Reg}$  can inhibit the cytokine release and proliferation of  $T_{EFF}$  cells by cell-cell contact dependent and independent mechanisms. This seems to be related at least partly to adenosine formation and metabolic competition (e.g., tryptophan pathway) as shown before (34).

In summary, our findings confirm our recent data that suggested a negative impact of  $CD8+ T_{EMRA}$  on bone fracture healing in patients (17) but extend these observations further by demonstrating the relevance of the systemic and local balance between effector and regulatory mechanisms ( $T_{EFF}/T_{Reg}$  ratio). Moreover, our data indicate that a  $CD4+ T_{Reg}$  based immunomodulation is feasible to further bone regeneration but its efficiency is dependent on the recipient's immune status, especially of a balanced adaptive immunity (Figure 6).

The strong link between the pre-surgery immune cell ratio and the healing outcome was clearly demonstrated in our animal model.

Considering the fact that the non-responder mice show the tendency of even worse healing compared to the responder and even compared to the control mice the following considerations could be made. It is already well-known that  $CD4+ T_{Reg}$  are not a committed stable T cell subpopulation. Dependent on the inflammatory environment, several studies reported a loss of FOXP3 expression by  $CD4+ T_{Reg}$  accompanied by the loss of their suppressive activity (39, 40). Furthermore,  $CD4+ T_{Reg}$  cannot only lose their suppressive capacity but can also convert to  $CD4+ T_{EFF}$  cells such as Th17 cells (40–42). For Th17 cells controversial effects on bone cells have been reported. They can stimulate the formation of osteoclasts by the production of Receptor Activator of NF- $\kappa$ B Ligand (RANKL), either directly by themselves or indirectly via osteoblasts or synovial fibroblasts. Furthermore, it is described that Th17



**FIGURE 6 |** Interdependency of the immune status and the healing outcome after bone fracture. The ratio of  $CD8+$  effector T cells ( $CD8+ T_{EFF}$ ) to  $CD4+$  regulatory T cells ( $CD4+ T_{Reg}$ ) affects the healing outcome after bone fracture. Under normal healing conditions, the T cell ratio is balanced. An elevated amount of  $CD8+ T_{EFF}$  relative to  $CD4+ T_{Reg}$  is unfavorable for successful healing. A shifted balance in the  $CD4+ T_{Reg}$  direction improves bone fracture healing.

cells act pro-osteogenic. Additionally, in the context of several bone related disorders, the underlying cause is postulated to be an imbalance of the ratio between Th17 cells and CD4+ T<sub>Reg</sub> (43, 44).

*In vitro* studies using murine or human CD4+ T<sub>Reg</sub> have demonstrated a possible transition between CD4+ T<sub>Reg</sub> and IL-17 producing (Th17) T cells. For example, Xu et al. reported that this transition is IL-6 dependent (41). Using co-culture setups, another study showed that murine CD4+ T<sub>Reg</sub> can obtain the expression of Ror $\gamma$ t, the master transcription factor of Th17 cells (45). Studies with human CD4+ T<sub>Reg</sub> also revealed this conversion between CD4+ T<sub>Reg</sub> and Th17 cells (46, 47). One possible explanation for the observed non-responsiveness of some CD4+ T<sub>Reg</sub> enriched animals could, therefore, be a potential transition of the pro-regenerative CD4+ T<sub>Reg</sub> into an anti-regenerative Th17-like phenotype. This hypothesis could be more directly verified by findings from Zhou and colleagues (40). They evaluated the stability and fate of (initially) Foxp3+ CD4+ T<sub>Reg</sub> under homeostatic as well as pathogenic conditions *in vivo* by using a combined Foxp3-GFP-Cre/ R26-YFP mice system. This mouse model enables the detection of the induction or downregulation of Foxp3 expression and further allows to track the cell fate of Foxp3+ CD4+ T<sub>Reg</sub>. Zhou and colleagues showed that the strength of loss of Foxp3 expression from CD4+ T<sub>Reg</sub> was dependent on the microenvironment and was stronger in inflamed tissues in autoimmune conditions. Furthermore, they showed that these converted Foxp3- “CD4+ T<sub>Reg</sub>” express memory cell marker and pro-inflammatory cytokines like IFN $\gamma$  and IL-17. Thus, there is evidence that a strong pro-inflammatory microenvironment bears the risk to promote the transition of Foxp3+ to Foxp3- CD4+ T cells. If such a transition is happening during bone fracture healing in elevated pro-inflammatory conditions, this could explain the observed impaired healing in our mice where CD4+ T<sub>Reg</sub> transfer did not overcome the pro-inflammatory microenvironment resulting from the high T<sub>EFF</sub> levels.

## CONCLUSION

Bone fracture healing is a highly complex process. The presented and discussed human and mice data demonstrate the strong interdependency between the adaptive immunity and the bone system in the context of bone healing. They further highlight how well-regulated the interplay of different (immune) cell subtypes has to be to promote regeneration. Due to the observed findings at both sides, locally at the fracture as well as systemically in the peripheral blood, this cellular interplay is probably not only crucial for bone fracture repair but also for the healing capacity of other injured tissues. With regard to clinical translation, our data indicate the advantage of a T<sub>EFF</sub>/T<sub>Reg</sub> ratio analysis, allowing to identify patients at risk in an early stratification and thereby predict already preoperatively the healing potential after bony injury. A prospective multicenter study (>600 patients) is currently ongoing to confirm the promising potential of the CD8+ T<sub>EMRA</sub>/CD4+ T<sub>Reg</sub> ratio as a potential biomarker for predicting the healing outcome in human bone fracture

patients. Therefore, the cellular interplay could be used to better understand regulatory mechanisms guiding regenerative processes and thus could reveal possible novel target points for (immunomodulatory) treatment strategies to therapeutically support and improve impaired tissue repair.

## DATA AVAILABILITY

All datasets generated for this study are included in the manuscript/**Supplementary Files**.

## ETHICS STATEMENT

The study was performed in compliance with the International Conference on Harmonization Guidelines for Good Clinical Practice and the Declaration of Helsinki. All patients participated with a written informed consent, and the study was approved by the Institutional Review Board (IRB) of the Charité – Universitätsmedizin Berlin (IRB approval EA2/096/11). All animal experiments were approved by the local legal representatives (Landesamt für Gesundheit und Soziales Berlin: G0008/12; T0119/14; T0249/11) and done accordingly to the guidelines of the Animal Welfare Act, the National Institutes of Health Guide for Care and Use of Laboratory Animals, and the National Animal Welfare and ARRIVE Guidelines.

## AUTHOR CONTRIBUTIONS

CS, KS-B, SR, SG, GD, and H-DV: conceptual idea and design of the study and drafting manuscript. CS and SR: data collection, analysis, and interpretation. CS and KS-B: clinically relevant osteotomy model. CG: hematoma preparation. BS, UB, and CG: epigenomic DNA data collection and analysis. SM, MD, and CK: clinical evaluation of patients and sample harvesting. CB: flow cytometry. All authors revised the final version of the manuscript.

## FUNDING

This study was supported by grants from the German Research Foundation (DFG SCHE1594, DFG SCHM 2977) and by the Federal Ministry of Education and Research (BMBF: BCRT 2015-18 and EPILYZE 031A191B). We acknowledge support from the Open Access Publication Fund of Charité – Universitätsmedizin Berlin.

## ACKNOWLEDGMENTS

We would like to acknowledge Norma Schulz, Janine Mikutta and Antje Blankenstein for her excellent technical support and Mathias Streitz and Birgit Sawitzki for their advice in flow cytometry analyses and murine T<sub>Reg</sub> preparation, respectively.

## SUPPLEMENTARY MATERIAL

The Supplementary Material for this article can be found online at: <https://www.frontiersin.org/articles/10.3389/fimmu.2019.01954/full#supplementary-material>

## REFERENCES

- Einhorn TA, Gerstenfeld LC. Fracture healing: mechanisms and interventions. *Nat Rev Rheumatol*. (2015) 11:45–54. doi: 10.1038/nrrheum.2014.164
- Dimitriou R, Tsiridis E, Giannoudis PV. Current concepts of molecular aspects of bone healing. *Injury*. (2005) 36:1392–404. doi: 10.1016/j.injury.2005.07.019
- Schlundt C, Bucher CH, Tsitsilonis S, Schell H, Duda GN, Schmidt-Bleek K. Clinical and research approaches to treat non-union fracture. *Curr Osteoporos Rep*. (2018) 16:155–68. doi: 10.1007/s11914-018-0432-1
- Bucher CH, Lei H, Duda GN, Volk HD, Schmidt-Bleek K. The role of immune reactivity in bone regeneration. In: Zorzi AR, editor. *Advanced Techniques in Bone Regeneration*. IntechOpen. (2016). Available online at: <https://www.intechopen.com/books/advanced-techniques-in-bone-regeneration/the-role-of-immune-reactivity-in-bone-regeneration>
- Shapouri-Moghaddam A, Mohammadian S, Vazini H, Taghadosi M, Esmaili SA, Mardani F, et al. Macrophage plasticity, polarization, and function in health and disease. *J Cell Physiol*. (2018) 233:6425–40. doi: 10.1002/jcp.26429
- Schlundt C, El Khassawna T, Serra A, Dienelt A, Wendler S, Schell H, et al. Macrophages in bone fracture healing: their essential role in endochondral ossification. *Bone*. (2018) 106:78–89. doi: 10.1016/j.bone.2015.10.019
- Schmidt-Bleek K, Schell H, Lienau J, Schulz N, Hoff P, Pfaff M, et al. Initial immune reaction and angiogenesis in bone healing. *J Tissue Eng Regen Med*. (2014) 8:120–30. doi: 10.1002/term.1505
- Barbul A, Breslin RJ, Woodyard JP, Wasserkrug HL, Efron G. The effect of in vivo T helper and T suppressor lymphocyte depletion on wound healing. *Ann Surg*. (1989) 209:479–83. doi: 10.1097/0000658-198904000-00015
- Efron JE, Frankel HL, Lazarou SA, Wasserkrug HL, Barbul A. Wound healing and T-lymphocytes. *J Surg Res*. (1990) 48:460–3. doi: 10.1016/0022-4804(90)90013-R
- Hauser CJ, Zhou X, Joshi P, Cuchens MA, Kregor P, Devidas M, et al. The immune microenvironment of human fracture/soft-tissue hematomas and its relationship to systemic immunity. *J Trauma*. (1997) 42:895–903; discussion 903–894. doi: 10.1097/00005373-199705000-00021
- Könnecke I, Serra A, El Khassawna T, Schlundt C, Schell H, Hauser A, et al. T and B cells participate in bone repair by infiltrating the fracture callus in a two-wave fashion. *Bone*. (2014) 64:155–65. doi: 10.1016/j.bone.2014.03.052
- Naik AA, Xie C, Zuscik MJ, Kingsley P, Schwarz EM, Awad H, et al. Reduced COX-2 expression in aged mice is associated with impaired fracture healing. *J Bone Miner Res*. (2009) 24:251–64. doi: 10.1359/jbmr.081002
- Schlundt C, Schell H, Goodman SB, Vunjak-Novakovic G, Duda GN, Schmidt-Bleek K. Immune modulation as a therapeutic strategy in bone regeneration. *J Exp Orthop*. (2015) 2:1. doi: 10.1186/s40634-014-0017-6
- Schmidt-Bleek K, Petersen A, Dienelt A, Schwarz C, Duda GN. Initiation and early control of tissue regeneration - bone healing as a model system for tissue regeneration. *Exp Opin Biol Therap*. (2014) 14:247–59. doi: 10.1517/14712598.2014.857653
- Schmidt-Bleek K, Schell H, Kolar P, Pfaff M, Perka C, Buttgerit F, et al. Cellular composition of the initial fracture hematoma compared to a muscle hematoma: a study in sheep. *J Orthop Res*. (2009) 27:1147–51. doi: 10.1002/jor.20901
- Schmidt-Bleek K, Schell H, Schulz N, Hoff P, Perka C, Buttgerit F, et al. Inflammatory phase of bone healing initiates the regenerative healing cascade. *Cell Tissue Res*. (2012) 347:567–73. doi: 10.1007/s00441-011-1205-7
- Reinke S, Geissler S, Taylor WR, Schmidt-Bleek K, Juelke K, Schwachmeyer V, et al. Terminally differentiated CD8(+) T cells negatively affect bone regeneration in humans. *Sci Transl Med*. (2013) 5:177ra136. doi: 10.1126/scitranslmed.3004754
- Liu Y, Wang L, Kikui T, Akiyama K, Chen C, Xu X, et al. Mesenchymal stem cell-based tissue regeneration is governed by recipient T lymphocytes via IFN-gamma and TNF-alpha. *Nat Med*. (2011) 17:1594–601. doi: 10.1038/nm.2542
- Zaiss MM, Axmann R, Zwerina J, Polzer K, Gückel E, Skapenko A, et al. Treg cells suppress osteoclast formation: a new link between the immune system and bone. *Arthritis Rheum*. (2007) 56:4104–12. doi: 10.1002/art.23138
- Zaiss MM, Frey B, Hess A, Zwerina J, Luther J, Nimmerjahn F, et al. Regulatory T cells protect from local and systemic bone destruction in arthritis. *J Immunol*. (2010) 184:7238–46. doi: 10.4049/jimmunol.0903841
- Zaiss MM, Sarter K, Hess A, Engelke K, Böhm C, Nimmerjahn F, et al. Increased bone density and resistance to ovariectomy-induced bone loss in FoxP3-transgenic mice based on impaired osteoclast differentiation. *Arthritis Rheum*. (2010) 62:2328–38. doi: 10.1002/art.27535
- Pappritz K, Savvatis K, Miteva K, Kerim B, Dong F, Fechner H, et al. Immunomodulation by adoptive regulatory T-cell transfer improves Coxsackievirus B3-induced myocarditis. *FASEB J*. (2018) fj201701408R. doi: 10.1096/fj.201701408R. [Epub ahead of print].
- Geissler S, Textor M, Stumpp S, Seitz S, Lekaj A, Brunk S, et al. Loss of murine Gfi1 causes neutropenia and induces osteoporosis depending on the pathogen load and systemic inflammation. *PLoS ONE*. (2018) 13:e0198510. doi: 10.1371/journal.pone.0198510
- Bucher CH, Schlundt C, Wulsten D, Sass FA, Wendler S, Ellinghaus A, et al. Experience in the Adaptive Immunity Impacts Bone Homeostasis, Remodeling, and Healing. *Front Immunol*. (2019)10:797. doi: 10.3389/fimmu.2019.00797
- Bouxsein ML, Boyd SK, Christiansen BA, Guldberg RE, Jepsen KJ, Müller R. Guidelines for assessment of bone microstructure in rodents using micro-computed tomography. *J Bone Miner Res*. (2010) 25:1468–86. doi: 10.1002/jbmr.141
- Gollwitzer H, Karampour K, Hauschild M, Diehl P, Busch R, Mittelmeier W. Biomechanical investigation of the primary stability of intramedullary compression nails in the proximal tibia: experimental study using interlocking screws in cryopreserved human tibias. *J Orthop Sci*. (2004) 9:22–8. doi: 10.1007/s00776-003-0731-x
- Hasenboehler E, Rikli D, Babst R. Locking compression plate with minimally invasive plate osteosynthesis in diaphyseal and distal tibial fracture: a retrospective study of 32 patients. *Injury*. (2007) 38:365–70. doi: 10.1016/j.injury.2006.10.024
- Moghaddam A, Zimmermann G, Hammer K, Bruckner T, Grützner PA, von Recum J. Cigarette smoking influences the clinical and occupational outcome of patients with tibial shaft fractures. *Injury*. (2011) 42:1435–42. doi: 10.1016/j.injury.2011.05.011
- Yang KH, Patel A. Significance of fracture gap in open tibial fracture. *Yonsei Med J*. (1995) 36:130–6. doi: 10.3349/ymj.1995.36.2.130
- Türbachova I, Schwachula T, Vasconcelos I, Mustea A, Baldinger T, Jones KA, et al. The cellular ratio of immune tolerance (immunoCRIT) is a definite marker for aggressiveness of solid tumors and may explain tumor dissemination patterns. *Epigenetics*. (2013) 8:1226–35. doi: 10.4161/epi.26334
- Wieczorek G, Asemisen A, Model F, Turbachova I, Floess S, Liebenberg V, et al. Quantitative DNA methylation analysis of FOXP3 as a new method for counting regulatory T cells in peripheral blood and solid tissue. *Cancer Res*. (2009) 69:599–608. doi: 10.1158/0008-5472.CAN-08-2361
- Baron U, Werner J, Schildknecht K, Schulze JJ, Mulu A, Liebert UG, et al. Epigenetic immune cell counting in human blood samples for immunodiagnostics. *Sci Transl Med*. (2018) 10:eaan3508. doi: 10.1126/scitranslmed.aan3508
- Apostolou I, von Boehmer H. In vivo instruction of suppressor commitment in naive T cells. *J Exp Med*. (2004) 199:1401–8. doi: 10.1084/jem.20040249
- Lei H, Schmidt-Bleek K, Dienelt A, Reinke P, Volk HD. Regulatory T cell-mediated anti-inflammatory effects promote successful tissue repair in both indirect and direct manners. *Front Pharmacol*. (2015) 6:184. doi: 10.3389/fphar.2015.00184
- Lang A, Schulz A, Ellinghaus A, Schmidt-Bleek K. Osteotomy models - the current status on pain scoring and management in small rodents. *Lab Ani*. (2016) 50:433–41. doi: 10.1177/0023677216675007
- Klein RF, Mitchell SR, Phillips TJ, Belknap JK, Orwoll ES. Quantitative trait loci affecting peak bone mineral density in mice. *J Bone Min Res*. (1998) 13:1648–56. doi: 10.1359/jbmr.1998.13.11.1648
- Sbierski-Kind J, Kath J, Brachs S, Streitz M, von Herrath MG, Kühl AA, et al. Distinct housing conditions reveal a major impact of adaptive immunity on the course of obesity-induced type 2 diabetes. *Front Immunol*. (2018) 9:1069. doi: 10.3389/fimmu.2018.01069
- El Khassawna T, Serra A, Bucher CH, Petersen A, Schlundt C, Könnecke I, et al. T lymphocytes influence the mineralization process of bone. *Front in immunology*. (2017) 8:562 doi: 10.3389/fimmu.2017.00562

39. Rubtsov YP, Niec RE, Josefowicz S, Li L, Darce J, Mathis D, et al. Stability of the regulatory T cell lineage *in vivo*. *Science*. (2010) 329:1667–71. doi: 10.1126/science.1191996
40. Zhou X, Bailey-Bucktrout SL, Jeker LT, Penaranda C, Martínez-Llordella M, Ashby M, et al. Instability of the transcription factor Foxp3 leads to the generation of pathogenic memory T cells *in vivo*. *Nat Immunol*. (2009) 10:1000–7. doi: 10.1038/ni.1774
41. Xu L, Kitani A, Fuss I, Strober W. Cutting edge: regulatory T cells induce CD4+CD25-Foxp3- T cells or are self-induced to become Th17 cells in the absence of exogenous TGF-beta. *J Immunol*. (2007) 178:6725–9. doi: 10.4049/jimmunol.178.11.6725
42. Yang XO, Nurieva R, Martinez GJ, Kang HS, Chung Y, Pappu BP, et al. Molecular antagonism and plasticity of regulatory and inflammatory T cell programs. *Immunity*. (2008) 29:44–56. doi: 10.1016/j.immuni.2008.05.007
43. Niu Q, Cai B, Huang ZC, Shi YY, Wang LL. Disturbed Th17/Treg balance in patients with rheumatoid arthritis. *Rheumatol Int*. (2012) 32:2731–6. doi: 10.1007/s00296-011-1984-x
44. Tyagi AM, Srivastava K, Mansoori MN, Trivedi R, Chattopadhyay N, Singh D. Estrogen deficiency induces the differentiation of IL-17 secreting Th17 cells: a new candidate in the pathogenesis of osteoporosis. *PLoS ONE*. (2012) 7:e44552. doi: 10.1371/journal.pone.0044552
45. Osorio F, LeibundGut-Landmann S, Lochner M, Lahl K, Sparwasser T, Eberl G, et al. DC activated via dectin-1 convert Treg into IL-17 producers. *Eur J Immunol*. (2008) 38:3274–81. doi: 10.1002/eji.200838950
46. Beriou G, Costantino CM, Ashley CW, Yang L, Kuchroo VK, Baecher-Allan C, et al. IL-17-producing human peripheral regulatory T cells retain suppressive function. *Blood*. (2009) 113:4240–9. doi: 10.1182/blood-2008-10-183251
47. Koenen HJ, Smeets RL, Vink PM, van Rijssen E, Boots AM, Joosten I. Human CD25highFoxp3pos regulatory T cells differentiate into IL-17-producing cells. *Blood*. (2008) 112:2340–52. doi: 10.1182/blood-2008-01-133967

**Conflict of Interest Statement:** BS and UB were employed by the company Epiontis GmbH, Precision for Medicine Group, Berlin, Germany.

The remaining authors declare that the research was conducted in the absence of any commercial or financial relationships that could be construed as a potential conflict of interest.

Copyright © 2019 Schlundt, Reinke, Geissler, Bucher, Giannini, Märdian, Dahne, Kleber, Samans, Baron, Duda, Volk and Schmidt-Bleek. This is an open-access article distributed under the terms of the Creative Commons Attribution License (CC BY). The use, distribution or reproduction in other forums is permitted, provided the original author(s) and the copyright owner(s) are credited and that the original publication in this journal is cited, in accordance with accepted academic practice. No use, distribution or reproduction is permitted which does not comply with these terms.