

RESEARCH ARTICLE

Open Access



Prognostic factors for abatacept retention in patients who received at least one prior biologic agent: an interim analysis from the observational, prospective ACTION study

Hubert G. Nüßlein^{1*}, Rieke Alten², Mauro Galeazzi³, Hanns-Martin Lorenz⁴, Michael T. Nurmohamed⁵, William G. Bensen⁶, Gerd R. Burmester⁷, Hans-Hartmut Peter⁸, Karel Pavelka⁹, Melanie Chartier¹⁰, Coralie Poncet¹¹, Christiane Rauch¹² and Manuela Le Bars¹³

Abstract

Background: The emergence of new therapies for the treatment of rheumatoid arthritis (RA), the paucity of head-to-head studies, and the heterogeneous nature of responses to current biologics highlight the need for the identification of prognostic factors for treatment response and retention in clinical practice. Prognostic factors for patient retention have not been explored thoroughly despite data for abatacept and other biologics being available from national registries. Real-world data from the ACTION study may supplement the findings of randomized controlled trials and show how abatacept is used in clinical practice. The aim of this interim analysis was to identify prognostic factors for abatacept retention in patients with RA who received at least one prior biologic agent.

Methods: A large, international, non-interventional cohort of patients with moderate-to-severe RA who initiated intravenous abatacept in Canada and Europe (May 2008–January 2011) enrolled in the ACTION study. Potential prognostic factors for retention in this interim analysis (data cut-off February 2012; including patients from Canada, Germany, Greece, and Italy) were baseline demographics and disease characteristics, medical history, and previous and concomitant medication. Clinically relevant variables with $p \leq 0.20$ in univariate analysis and no collinearity were entered into a Cox proportional hazards regression model, adjusted for clustered data. Variables with $p \leq 0.10$ were retained in the final model (backward selection).

Results: The multivariate model included 834 patients. Anti-cyclic citrullinated peptide (CCP) antibody positivity (hazard ratio [95 % confidence interval]: 0.55 [0.40, 0.75], $p < 0.001$), failure of < 2 prior anti-tumor necrosis factors (TNFs) (0.71 [0.56, 0.90], $p = 0.005$ versus ≥ 2 prior anti-TNFs), and cardiovascular comorbidity at abatacept initiation (0.48 [0.28, 0.83], $p = 0.009$) were associated with lower risk of abatacept discontinuation. Patients in Greece and Italy were less likely to discontinue abatacept than patients in Germany and Canada (Greece: 0.30 [0.16, 0.58]; Italy: 0.50 [0.33, 0.76]; Canada: 1.04 [0.78, 1.40], $p < 0.001$ versus Germany).

Conclusions: Real-world prognostic factors for abatacept retention include anti-CCP positivity and fewer prior anti-TNF failures. Differences in retention rates between countries may reflect differences in healthcare systems. The finding that abatacept has potential advantages in patients with cardiovascular comorbidities needs to be confirmed in further research.

Keywords: Abatacept, Biologic agents, Cyclic citrullinated peptide, Heart failure, Prognostic factors, Multivariate analysis, Retention, Rheumatoid arthritis

* Correspondence: nuesslein.hu@googlemail.com

¹University of Erlangen-Nuremberg, Rheumatologische Schwerpunktpaxis, Kontumazgarten 4, 90429 Nuremberg, Germany

Full list of author information is available at the end of the article

Background

Abatacept is a fully humanized fusion protein that acts as a selective T-cell co-stimulation modulator. It is approved globally for the treatment of moderate-to-severe rheumatoid arthritis (RA) in patients with an inadequate response to one or more disease-modifying anti-rheumatic drugs (DMARDs; including methotrexate [MTX] or an anti-tumor necrosis factor [TNF]) [1–4]. In Canada, abatacept can also be used in combination with MTX for the treatment of moderate-to-severe RA in patients who are MTX-naïve [1–4]. Abatacept is available in subcutaneous and intravenous (IV) formulations [1–4], and a favorable efficacy and safety profile has been demonstrated in randomized controlled trials [5, 6]. IV abatacept received regulatory approval for the treatment of RA in 2006 in Canada and in 2007 in Europe. ACTION (AbataCepT In rOutiNe clinical practice) is a large, real-world, prospective, observational cohort study of patients with RA from Europe and Canada who were receiving IV abatacept and were followed for a maximum of 2 years. Results from a 6-month interim analysis of the ACTION study suggest that abatacept is an effective and well-tolerated treatment option in patients with RA [7].

The emergence of new therapies for the treatment of RA, the paucity of head-to-head studies, and the heterogeneous nature of responses to current biologics highlight the need for the identification of prognostic factors for treatment response and retention in clinical practice. The identification of prognostic factors may support individualized treatment strategies and could aid physicians in making informed therapeutic decisions [8].

Real-world studies may include patients with a wide range of disease activity levels and encompass regional variations in treatment, and can therefore supplement the findings of randomized controlled trials with strict inclusion and exclusion criteria [9]. Although some studies have identified prognostic factors for response to abatacept, few have been confirmed [10]. In the French Oencia and Rheumatoid Arthritis (ORA) registry, positivity for anti-cyclic citrullinated peptide (CCP) antibodies was associated with European League Against Rheumatism (EULAR) response in a multivariate analysis, after adjustment for Disease Activity Score (DAS)28 [11]. In an Italian study of 32 patients with RA who had been treated with abatacept, low levels of CD4 + CD28⁻ and CD8 + CD28⁻ T cells were associated with a greater likelihood of achieving remission at 6 months [12].

Treatment discontinuation can result from safety concerns or a lack of efficacy, but prognostic factors for patient retention have not been explored thoroughly despite data for abatacept and other biologics being available from national registries. In patients within the ORA registry,

anti-CCP positivity occurred more frequently in patients who had continued abatacept treatment after 6 months, compared with patients who had discontinued abatacept (72.5 % versus 62.4 %, $p = 0.02$) [11]. In the Swedish Rheumatology register, 6-month abatacept retention rates were higher in patients who were biologic naïve compared with patients who had received 1 or ≥ 2 previous biologics (94 % versus 78 % and 77 %, respectively) [13]. In a pooled analysis of eight European RA registries, abatacept retention was strongly influenced by the number of previous biologics. Compared with patients who had not previously received biologic agents, retention was lower in patients who had received prior biologics ($p < 0.01$) [14].

This article reports prognostic factors for abatacept retention in patients with RA who had failed at least one prior biologic agent which were identified in an interim analysis from the international, non-interventional ACTION cohort study.

Methods

Study design and patient population

ACTION was a non-interventional, international, multicenter, cohort study that evaluated retention and effectiveness in patients with RA who had initiated IV abatacept in Europe (according to the abatacept Summary of Product Characteristics) and Canada (according to the abatacept Product Monograph) [2–4]. Patients were enrolled prospectively, within 3 months of abatacept initiation, between May 2008 and January 2011, and were followed for up to 2 years or, if the patient discontinued abatacept treatment before the 2-year endpoint, for up to 6 months after abatacept discontinuation. A detailed description of the ACTION study design has been reported previously in the context of a 6-month interim analysis [7, 15].

The study enrolled adult patients who were abatacept naïve, with established moderate-to-severe RA according to American College of Rheumatology revised criteria (1987) [16]. ACTION was conducted in accordance with the Declaration of Helsinki [17], the International Conference on Harmonization Good Clinical Practice Guidelines [18], and the Good Epidemiological Practice Guideline [19]. The study protocol and patient enrollment were approved by local ethics committees and regulatory agencies in accordance with each country's requirements (first approval received on 31 January 2008, in Munich, Germany; Additional file 1: Table S1). Enrolled patients provided written informed consent.

Here we present an interim analysis of the ACTION study in patients who were treated in four countries (Canada, Germany, Greece, and Italy). All data received up to February 2012 were considered. The analysis included only patients who had received at

least one prior biologic agent (the number of patients who had received no prior biologics was insufficient to build a robust model) and who had a baseline clinical assessment no later than 8 days after the first administration of abatacept [20].

Definition of abatacept exposure

The dates of first and last abatacept infusions were collected, and abatacept discontinuation and reasons for discontinuation were reported by the rheumatologist at any follow-up visit. Exposure to abatacept was defined as the difference between the first and last date of abatacept infusion, plus 30 days. Patients who did not discontinue abatacept were censored at the time of last available data.

Prognostic factors of retention

Data concerning potential prognostic factors, including known risk factors and clinically relevant variables, were collected at abatacept initiation. Continuous and categorized variables were considered in this analysis. Categorizations were based on validated cut-offs when available or on clinical expertise, previous literature, or descriptive statistics such as medians or quartiles. Sociodemographic variables were: country, age (continuous and <65 years, ≥ 65 years), sex, and body mass index (continuous and <25 kg/m² [underweight/normal], 25–<30 kg/m² [overweight], 30–<35 kg/m² [obese class I], and ≥ 35 kg/m² [obese class II/III]) [21]. Disease characteristics considered were: disease duration (continuous and ≤ 2 years, 3–5 years, 6–10 years, and >10 years), tender joint count (continuous out of a total score of 28), swollen joint count (continuous out of a total score of 28), C-reactive protein (CRP) quartile (<4 mg/L, 4–<10 mg/L, 10–<26 mg/L, and ≥ 26 mg/L), patient global assessment (continuous and based on median), physician global assessment (continuous and based on median), pain (continuous and based on median), DAS28 (erythrocyte sedimentation rate or CRP) (continuous and remission or low DAS [≤ 3.2], moderate DAS [>3.2 –5.1], and high DAS [>5.1]), calculated Clinical Disease Activity Index (continuous and remission, low or moderate DAS [≤ 22] and high DAS [>22]), radiographic erosion, rheumatoid factor (RF) status, anti-CCP status, and RF and anti-CCP double-positive status. RF and anti-CCP peptide antibody status were based on the assessment at abatacept initiation or any assessment made previously. Comorbidity data (including cardiovascular comorbidity) were collected by assessment of medical history at abatacept initiation and were classified by System Organ Class (SOC) as per the Medical Dictionary for Regulatory Activities. All SOCs were described and considered. Also considered were: number of prior conventional (c)DMARDs (0–3, >3), number of prior anti-TNF agents (<2, ≥ 2), type of biologic agent received before

abatacept (anti-TNF, other mechanism of action), and reason for discontinuation of last biologic agent (intolerance, primary inefficacy, secondary inefficacy, improvement in disease, and other reasons pooled together). Final considerations were: abatacept treatment pattern at initiation (monotherapy, combination with MTX, combination with other cDMARDs), prescription for MTX at initiation, and corticosteroid use before and at abatacept initiation (no corticosteroids, continuous use of corticosteroids, corticosteroids stopped at abatacept initiation, corticosteroids introduced at abatacept initiation).

Statistical analysis

Abatacept retention rates and 95 % confidence intervals (CI) were described using Kaplan–Meier estimators. Overall retention rate and discontinuation for inefficacy and intolerance were presented at 12 months. Descriptive analysis was performed for all potential prognostic factors. All potential prognostic factors were tested in univariate analysis. For variables in which the categories ‘not available’ or ‘not done’ were predefined, univariate analyses were performed with and without consideration of this category; to be considered in the multivariate model both analyses were required to show consistent significant results. Clinically relevant variables, known risk factors, and prognostic factors with $p \leq 0.20$ and no collinearity (two variables were collinear if $p < 0.05$ and V-Cramer > 0.5) were retained in the multivariate model. Known risk factors at treatment initiation, such as infections and infestations, chronic obstructive pulmonary disease (COPD), diabetes mellitus, and tobacco use, were considered in the multivariate model regardless of results in the univariate analysis. Prognostic factors of abatacept retention were identified over the whole period until the data cut-off (February 2012) by multivariate analysis using a Cox proportional hazards model with clustered data (sandwich method) to account for dependence among patients from a single site. Prognostic factors with $p > 0.10$ were removed by backward selection. Interactions between the retained prognostic factors were tested and included in the final model if significant ($p < 0.10$). Univariate analyses were re-run for the final patient sample included in the final multivariate model. Results were presented as hazard ratios (HRs) with 95 % CIs and p -values. An HR > 1 indicates higher likelihood of abatacept discontinuation, while an HR < 1 indicates a lower likelihood of abatacept discontinuation. HRs are significant when the 95 % CIs do not overlap 1. A sensitivity analysis was performed, including all variables that were significant in the univariate analysis with no variable selection in the multivariate step.

Results

Patient population

Between May 2008 and January 2011, 1138 patients were enrolled in the ACTION study, 999 (87.8 %) of whom were enrolled in Canada, Germany, Greece, and Italy. A total of 865/999 (86.6 %) patients had received at least one prior biologic agent. Patient baseline demographic and disease characteristics and comorbidities are shown in Table 1. Mean (standard deviation [SD]) age was 56.5 (12.1) years, 83.1 % of patients were women, mean (SD) RA duration was 11.4 (8.7) years ($n = 842$), 68.7 % were RF positive ($n = 719$ with available data), and 64.5 % were anti-CCP positive ($n = 456$ with available data). Previous and concomitant treatments for the overall analysis population are shown in Table 2. Patients received a mean (SD) of 2.9 (1.5) prior cDMARDs, with 283/865 (32.7 %) patients having received more than three prior cDMARDs. An anti-TNF was the most frequent type of last biologic agent received prior to abatacept initiation (717/851 patients [84.3 %]) and 429/865 (49.6 %) patients had received at least two prior anti-TNF agents. The mean (SD) cumulative duration of the last biologic agent was 18.9 (22.2) months ($n = 801$). Secondary inefficacy (loss of efficacy after initial response) was the most common reason for discontinuation of the last biologic (400/847 [47.2 %] patients). Abatacept was most frequently initiated in combination with MTX (with or without other cDMARDs; 483/865 [55.8 %] patients). In patients who started or continued treatment with corticosteroids at abatacept initiation, median (SD) corticosteroid dose was 8.73 (11.62) mg/day ($n = 645$).

Further analysis of baseline data revealed that most characteristics were broadly comparable across the countries assessed. However, some differences between countries were observed in terms of patient demographics, disease characteristics, and previous and concomitant therapies, as highlighted in the supplementary information (Additional file 2: Table S2).

In a *post hoc* analysis, socio-demographics, disease characteristics and comorbidities at abatacept initiation were compared in patients who were anti-CCP antibody seropositive versus seronegative. This analysis included all patients enrolled in ACTION between May 2008 and January 2011 who had received at least one prior biologic agent. Patients who were seropositive versus seronegative ($n = 472$ and $n = 253$, respectively) had lower mean (SD) body weight (74.0 [16.6] vs 77.2 [17.8] kg, $p = 0.014$) and body mass index (26.9 [5.3] vs 28.5 [6.0] kg/m², $p = 0.001$), longer RA duration (12.1 [8.9] vs 10.9 [9.5] years, $p = 0.018$) and more severe disease (erythrocyte sedimentation rate: 37.5 [24.1] vs 30.1 [23.8] mm/h, $p < 0.001$; radiographic erosion: 74.9 % vs 59.5 %, $p < 0.001$). Concomitant treatments at abatacept initiation were similar for patients who were seropositive versus

seronegative except for a numerically higher percentage of patients with anti-CCP seropositivity who received concomitant corticosteroids (77.3 % vs 71.1 %, $p = 0.072$).

Retention rate

The overall retention rate over 12 months is shown in Fig. 1. The retention rate (95 % CI) was 88.0 % (85.6, 90.1) at 6 months and 69.9 % (66.5, 73.0) at 12 months. The overall retention rates (95 % CI) per country at 6 and 12 months, respectively, were 96.8 % (90.4, 99.0) and 87.7 % (78.1, 93.2) in Greece, 90.4 % (85.5, 93.7) and 80.3 % (74.1, 85.1) in Italy, 89.2 % (83.3, 93.2) and 64.6 % (56.4, 71.8) in Canada, and 83.6 % (79.3, 87.1) and 61.3 % (55.9, 66.3) in Germany.

Over 12 months, 21.2 % of patients discontinued abatacept because of inefficacy (EULAR response) and 6.8 % discontinued because of intolerance.

Univariate analysis

Known risk factors of COPD, diabetes mellitus, tobacco use, and infection or infestation were proposed in the model even though they were not significant. Based on univariate analyses, 13 variables were eligible to enter the multivariate model ($p \leq 0.20$; Fig. 2). Among them, two variables (RF and anti-CCP double positivity, and concomitant MTX) were not entered into the multivariate model due to collinearity with other prognostic variables.

Multivariate analysis

Overall, 834/865 (96.4 %) patients were considered in the multivariate model (Fig. 3). Patients had a significantly lower risk of abatacept discontinuation if they were anti-CCP positive (HR [95 % CI]: 0.55 [0.40, 0.75], $p < 0.001$), had failed < 2 anti-TNF agents (0.71 [0.56, 0.90] versus ≥ 2 anti-TNF agents, $p = 0.005$), or had a cardiovascular comorbidity at abatacept initiation (0.48 [0.28, 0.83], $p = 0.009$). Patients in Greece and Italy were less likely to discontinue abatacept than patients in Germany and Canada (HR [95 % CI] versus Germany: 0.30 [0.16, 0.58] for Greece, 0.50 [0.33, 0.76] for Italy, 1.04 [0.78, 1.40] for Canada, $p < 0.001$). No significant interaction was found across prognostic factors. CRP level at baseline, RF status at baseline, and type of previous anti-TNF failure were significant in the univariate analysis ($p < 0.05$) but were no longer significant in the multivariate analysis. Abatacept treatment pattern at initiation (monotherapy, combination with MTX or combination with other cDMARDs) was entered into the multivariate model but was not found to be significant. No effect was observed in either univariate or multivariate analyses for infection at initiation or disease duration. The sensitivity analysis, including all variables that were significant in the univariate analysis with no variable selection in the multivariate step, was consistent.

Table 1 Baseline demographics, disease characteristics and comorbidities (analysis population)

Characteristic	N = 865
Demographics	
Age	
Mean (SD), years	56.5 (12.1)
<65 years, n (%)	615 (71.1)
≥65 years, n (%)	250 (28.9)
Body mass index ^a	
Mean (SD), kg/m ²	27.5 (5.8)
<25 kg/m ² , n (%)	310 (37.9)
25– < 30 kg/m ² , n (%)	275 (33.6)
30– < 35 kg/m ² , n (%)	154 (18.8)
≥35 kg/m ² , n (%)	79 (9.7)
Sex	
Men, n (%)	146 (16.9)
Women, n (%)	719 (83.1)
Country	
Canada, n (%)	163 (18.8)
Germany, n (%)	370 (42.8)
Greece, n (%)	110 (12.7)
Italy, n (%)	222 (25.7)
Disease characteristics	
RA duration	
Mean (SD), years	11.4 (8.7)
≤2 years, n (%)	83 (9.9)
3–5 years, n (%)	169 (20.1)
6–10 years, n (%)	224 (26.6)
>10 years, n (%)	366 (43.5)
Tender joint count/28	
Mean (SD)	11.4 (7.3)
Swollen joint count/28	
Mean (SD)	7.9 (5.9)
HAQ-DI	
<1.50, n (%)	332 (41.7)
≥1.50, n (%)	464 (58.3)
DAS28 (ESR, otherwise CRP)	
Remission or LDAS (≤3.2), n (%)	24 (3.0)
MDAS (>3.2–5.1), n (%)	203 (25.6)
HDAS (>5.1), n (%)	440 (55.5)
Not done, n (%)	126 (15.9)

Table 1 Baseline demographics, disease characteristics and comorbidities (analysis population) (*Continued*)

	N = 865
CDAI (calculated)	
Remission, LDAS, or MDAS (≤22), n (%)	196 (22.7)
HDAS (>22), n (%)	568 (65.7)
Missing, n (%)	101 (11.7)
Radiographic erosion (presence)	
No, n (%)	218 (29.1)
Yes, n (%)	532 (70.9)
CRP	
<4 mg/L, n (%)	224 (25.9)
4– < 10 mg/L, n (%)	172 (19.9)
10– < 26 mg/L, n (%)	204 (23.6)
≥26 mg/L, n (%)	182 (21.0)
Not done, n (%)	83 (9.6)
RF status	
Negative, n (%)	225 (26.4)
Positive, n (%)	494 (58.0)
Not available, n (%)	133 (15.6)
Anti-CCP status	
Negative, n (%)	162 (19.4)
Positive, n (%)	294 (35.3)
Not available, n (%)	378 (45.3)
Comorbidities	
Cardiovascular disorders	
No, n (%)	807 (93.3)
Yes, n (%)	58 (6.7)
Cardiac arrhythmia, n (%)	22 (2.5)
Cardiac valve disorder, n (%)	9 (1.0)
Coronary artery disorder, n (%)	23 (2.7)
Heart failure, n (%)	15 (1.7)
Myocardial disorder, n (%)	2 (0.2)
COPD	
No, n (%)	803 (92.8)
Yes, n (%)	62 (7.2)
Diabetes mellitus	
No, n (%)	753 (87.1)
Yes, n (%)	112 (12.9)
Tobacco use	
No, n (%)	757 (87.5)
Yes, n (%)	108 (12.5)

Table 1 Baseline demographics, disease characteristics and comorbidities (analysis population) (*Continued*)

Inflections and infestations	N = 865
<i>No, n (%)</i>	809 (93.5)
<i>Yes, n (%)</i>	56 (6.5)

Category in italics is the reference for univariate and multivariate analyses
The analysis population included patients treated in Canada, Germany, Greece, and Italy who had received at least one prior biologic agent and had a baseline clinical assessment no later than 8 days after the first administration of abatacept

CCP cyclic citrullinated peptide, CDAI Clinical Disease Activity Index, CRP C-reactive protein, DAS Disease Activity Score, ESR erythrocyte sedimentation rate, HAQ-DI Health Assessment Questionnaire-Disability Index, HDAS high Disease Activity Score, LDAS low Disease Activity Score, MDAS moderate Disease Activity Score, RA rheumatoid arthritis, RF rheumatoid factor, SD standard deviation

^aWorld Health Organization body mass index classification: underweight/normal if <25 kg/m², overweight if 25–<30 kg/m², obese class I if 30–<35 kg/m², and obese class II/III if ≥35 kg/m² [21]

Discussion

This is the first international, prospective study to evaluate the prognostic factors for abatacept retention in a real-world setting in patients with RA who had received at least one prior biologic agent. In this interim analysis, the 6- and 12-month abatacept retention rates were 88.0 % and 69.9 %, respectively. Abatacept retention rates in ACTION were numerically within the range reported in other published studies [11, 13, 22]. The 12-month retention rates for abatacept were within the range of those reported for tocilizumab [22–25] and for anti-TNFs [26].

Here, we report predictive factors for abatacept retention at 12 months identified from a cohort of patients from the ACTION study who had received at least one prior biologic agent: anti-CCP positivity, failing <2 prior anti-TNF agents, and cardiovascular comorbidity at initiation were associated with higher retention. Differences in retention between some countries were also observed. The percentage of patients receiving abatacept as monotherapy in this study (23.2 %) was broadly consistent with that observed in biologic registries (approximately 30 %) [27].

In this study, anti-CCP positivity was associated with improved abatacept retention, compared with anti-CCP negative status. In addition, RF seropositivity was significant in the univariate analysis but not in the multivariate analysis. Anti-CCP positivity has previously been shown to be a predictor of clinical response to abatacept in patients with RA [11, 28]. The mechanisms underlying this association remain to be further elucidated, although some initial findings suggest that the very early effect of abatacept on T-cell modulation is an important mechanism of action in patients with anti-CCP positivity [29]. In the present study, patients with exposure to at least two prior anti-TNFs were more likely to discontinue abatacept than patients with exposure <2 prior

Table 2 Previous and concomitant medications (analysis population)

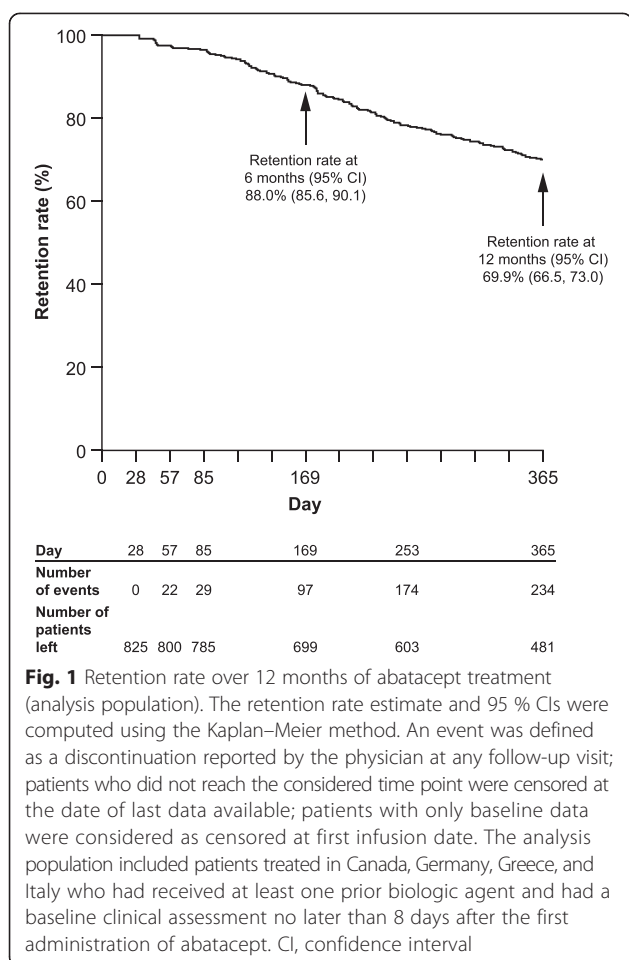
Treatment parameter	N = 865
Previous treatments	
Number of prior DMARDs	N = 865
<i>0–3, n (%)</i>	582 (67.3)
<i>>3, n (%)</i>	283 (32.7)
Number of prior anti-TNF agents	N = 865
<i>≥2, n (%)</i>	429 (49.6)
<i><2, n (%)</i>	436 (50.4)
Type of biologic agent	N = 851
<i>Other MOA, n (%)</i>	134 (15.8)
<i>Anti-TNF agent</i>	717 (84.3)
Reason for discontinuation of last biologic	N = 847
<i>Intolerance, n (%)</i>	190 (22.4)
<i>Primary inefficacy, n (%)^a</i>	203 (24.0)
<i>Secondary inefficacy, n (%)[†]</i>	400 (47.2)
<i>Major improvement + other reasons, n (%)</i>	54 (6.4)
Concomitant therapies	
Abatacept treatment pattern at initiation	N = 865
<i>Monotherapy, n (%)</i>	201 (23.2)
<i>Combination with MTX (± other DMARDs), n (%)</i>	483 (55.8)
<i>Combination with other DMARDs, n (%)</i>	181 (20.9)
Corticosteroid treatment pattern at abatacept initiation (versus before initiation) [‡]	N = 865
<i>No corticosteroids, n (%)</i>	202 (25.4)
<i>Continuous use of corticosteroids, n (%)</i>	491 (56.8)
<i>Stop corticosteroid use, n (%)</i>	18 (2.1)
<i>Introduction of corticosteroids, n (%)</i>	154 (17.8)

Category in italics is the reference for univariate and multivariate analyses
The analysis population included patients treated in Canada, Germany, Greece, and Italy who had received at least one prior biologic agent and had a baseline clinical assessment no later than 8 days after the first administration of abatacept. Patient population includes 17 patients who did not receive prior treatment with an anti-TNF agent but a biologic agent with another MOA

DMARD disease-modifying anti-rheumatic drug, MOA mechanism of action, MTX methotrexate, TNF tumor necrosis factor

^aFailure to respond; [†]Loss of efficacy after initial response. [‡]Mean (standard deviation) corticosteroid dose was 8.73 (11.62) mg/day in patients who continued use of corticosteroids or who started corticosteroids at abatacept initiation (n = 645)

anti-TNFs. Patients with prior exposure to multiple anti-TNFs are likely to have advanced RA and may find it difficult to benefit from any therapy; furthermore, previous studies have shown that no or low prior exposure to biologic agents is associated with longer drug survival in patients receiving tocilizumab or anti-TNFs [14, 23, 30]. The reason for discontinuation of the last biologic agent prior to abatacept initiation was a significant predictor of abatacept retention in the univariate but not the multivariate analysis. In a subgroup analysis of the ATTAIN (Abatacept



Trial in Treatment of Anti-TNF Inadequate responders) trial, the reason for prior anti-TNF failure was not associated with differences in the efficacy of abatacept over 6 months [31].

Cardiovascular comorbidity at initiation (including cardiac arrhythmia, cardiac valve disorders, coronary artery disorders, heart failure, and myocardial disorders) was associated with a decreased risk of abatacept discontinuation compared with not having cardiovascular comorbidity. The long-term safety profile of abatacept is well established in RA [32]. Abatacept does not have any special warnings or contraindications in patients with cardiovascular diseases. In contrast, adalimumab, certolizumab pegol, golimumab and infliximab are contraindicated in patients with moderate-to-severe heart failure (New York Heart Association class III/IV) [33–36] and etanercept has a special warning in patients with congestive heart failure [37]; this may result in limited options for switching treatment in patients with a history of cardiovascular comorbidity. Channeling may have been introduced at abatacept initiation and comorbidities may have been underreported.

Differences in retention were observed between countries in the multivariate analysis. Patients in Greece and Italy were less likely to discontinue abatacept than patients in Germany and Canada; these differences in abatacept retention may represent differences in patient populations and disease characteristics, access to biologic agents, and national guidelines for the management of RA. Although covering other European countries, country was found to impact abatacept retention in a pooled analysis of 9 European registries [38, 39]. Baseline demographics and disease characteristics were broadly comparable across the countries included in this analysis, although patients in Canada had higher swollen joint counts and were less likely to exhibit radiographic erosion than patients in Germany, Italy, and Greece. Patients in Italy were less likely to have received ≥ 2 prior biologic agents compared with patients in the other countries assessed, and rates of concomitant corticosteroid use differed markedly between countries (48.5 % in Canada compared with 69.1 %, 78.8 %, and 85.1 % in Greece, Italy, and Germany, respectively). In addition, several studies have reported a lower incidence and prevalence of RA, as well as disease activity, in southern European Union (EU) countries versus northern EU countries [40, 41]. Access to biologic agents may be related to gross domestic product per capita and healthcare system structure, including the number of rheumatologists per inhabitant [38, 42, 43]. Treatment guidance for the management of RA is available in most countries and may have been developed taking into account gross domestic product and disease parameters (e.g. disease activity, poor prognostic factors) [44]. Finally, patient management is also dependent on the type of practice (evidence-based versus routine practice). Together, these elements may partly explain differences in retention between countries, independently of patient characteristics. However, such detailed information was not specifically collected and is probably aggregated in the variable ‘country’, including influence of genetic background and environmental factors.

The limitations of this study are similar to other studies using uncontrolled, real-world data. There was no active comparator in this study and there are few examples of real-world data comparing abatacept with other biologic agents, or comparing other biologic agents. Owing to the real-world design of ACTION, a selection bias based on disease severity or adverse events is plausible. To minimize patient selection bias, participating physicians enrolled subsequent patients who were eligible as per the inclusion and exclusion criteria. To ensure that ACTION did not interfere with a physician’s routine clinical practice, the decision to treat a patient with abatacept was made prior

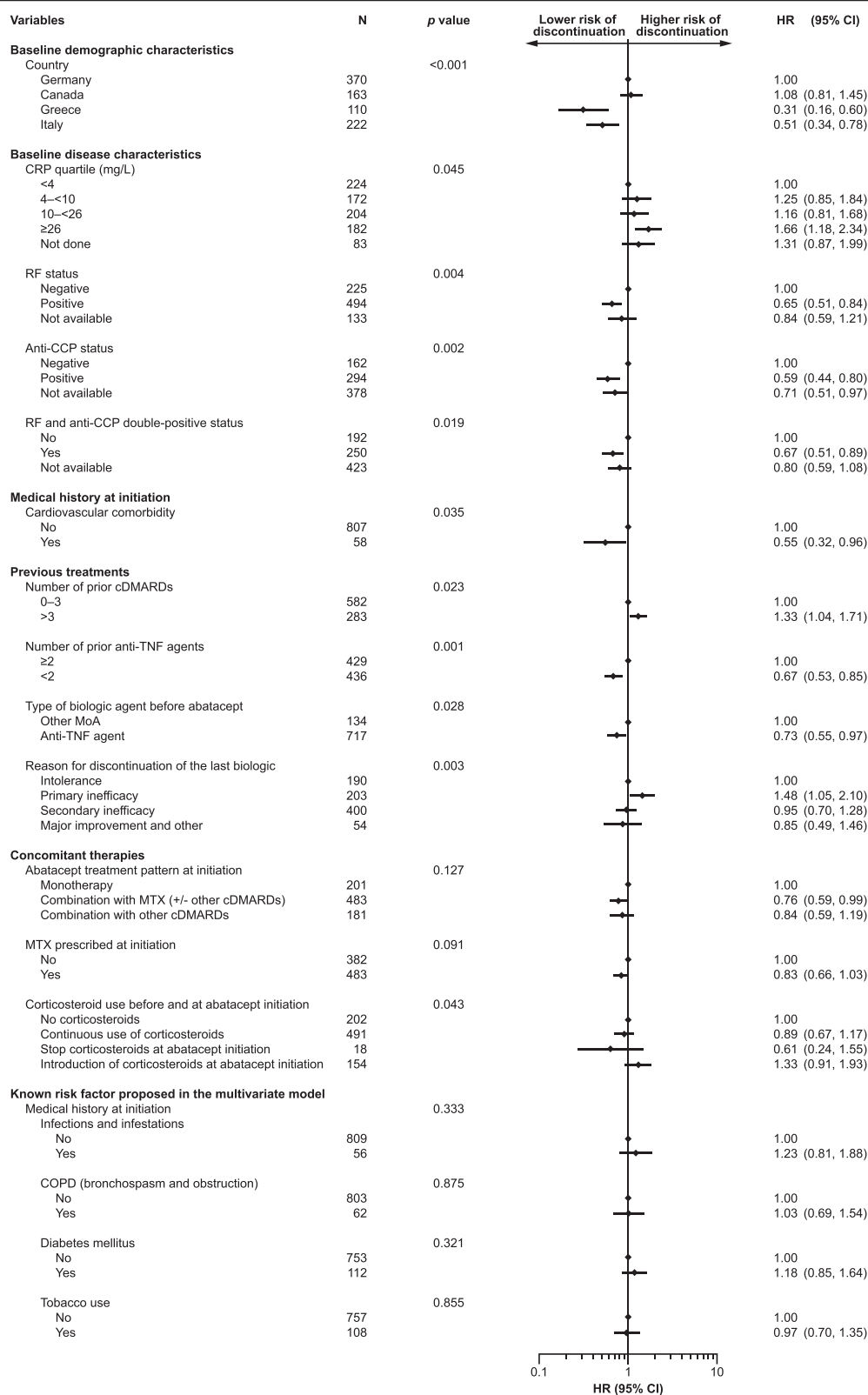


Fig. 2 (See legend on next page.)

(See figure on previous page.)

Fig. 2 Univariate model of abatacept discontinuation. Results are presented for variables retained in the model at the 20 % level. HRs are presented with corresponding 95 % CIs. An HR >1 indicates an increased risk of abatacept discontinuation. An HR <1 indicates a decreased risk of abatacept discontinuation. HRs are significant when the 95 % CIs do not overlap 1. The patient population included 17 patients who were anti-TNF naïve and who had previously received treatment with a biologic with a different mechanism of action. CCP, cyclic citrullinated peptide; cDMARD, conventional disease-modifying anti-rheumatic drug; CI, confidence interval; COPD, chronic obstructive pulmonary disease; CRP, C-reactive protein; HR, hazard ratio; MTX, methotrexate; RF, rheumatoid factor; TNF, tumor necrosis factor

to enrollment in the study. A process of random selection of study investigators from a comprehensive list of rheumatologists was used to obtain a geographically balanced group of investigators in each country who were representative of rheumatologists who treat patients with IV biologics.

This analysis of patients from the ACTION study included a large number of patients in an international real-life setting (n = 865), which permitted inclusion of a comprehensive list of all relevant prognostic factors. Most previous studies of abatacept in clinical practice have explored only national registries from single countries [11, 22, 45]. As this was an interim analysis, further analyses are warranted to confirm these findings.

Although many studies have identified predictive factors of clinical response to biologic agents, few have been confirmed, in particular for abatacept [10]. Even

fewer studies have identified prognostic factors of abatacept retention. Similar trends were found in ACTION and in the pooled analysis of 9 European registries [39]. Given the range of biologic agents now available for the treatment of RA, the identification of patients who will benefit from a specific therapy is of interest and may aid realistic cost-effectiveness estimates. Therefore, the identification of prognostic factors of clinical response and retention are of growing importance, as highlighted by the 2013 EULAR recommendations [8].

Conclusions

Abatacept retention rates at 6 and 12 months were high and were consistent with previous studies in national registries. Anti-CCP positivity and less than two prior anti-TNFs were predictors of higher abatacept retention. There are no contraindications or special

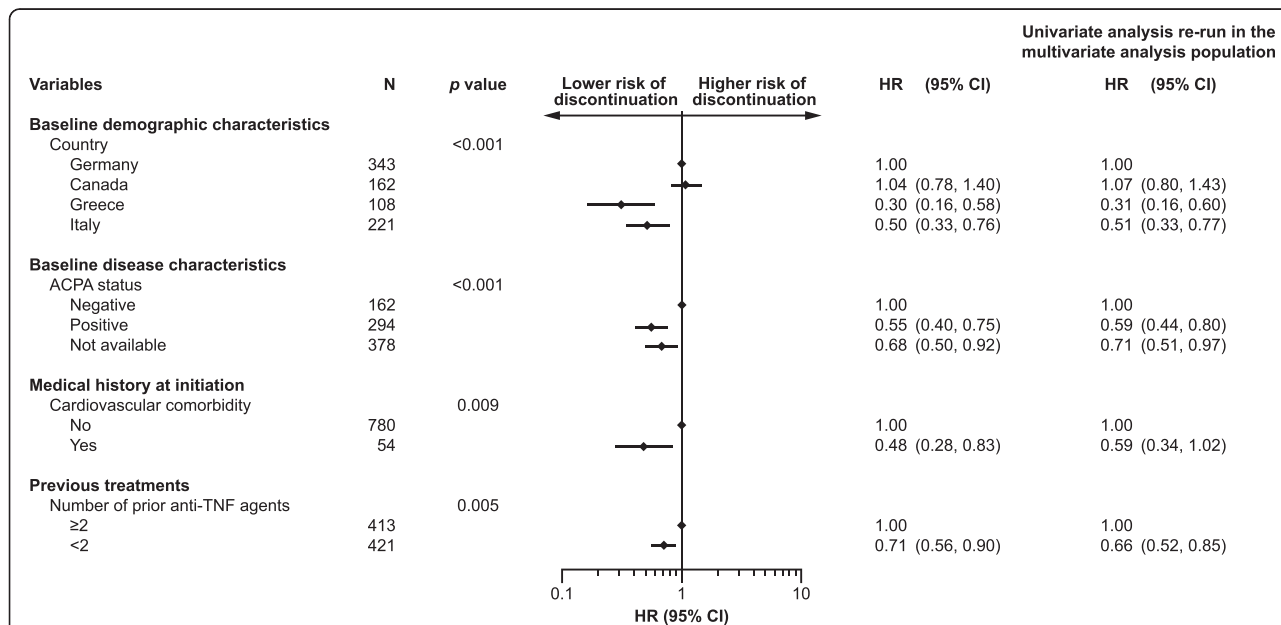


Fig. 3 Multivariate model of abatacept discontinuation (n = 834). Results are presented for variables retained in the model at the 10 % level. HRs are presented with corresponding 95 % CIs. An HR >1 indicates an increased risk of abatacept discontinuation. An HR <1 indicates a decreased risk of abatacept discontinuation. HRs are significant when the 95 % CIs do not overlap 1. The patient population included 17 patients who were anti-TNF naïve and had previously received treatment with a biologic with a different mechanism of action. ACPA, anti-citrullinated protein antibody; CI, confidence interval; HR, hazard ratio; TNF, tumor necrosis factor

warnings for abatacept in patients with cardiovascular comorbidities based on study results and registries, and the results of this study suggest that abatacept may be a good treatment option in these patients. Abatacept retention varied between countries and may reflect differences in healthcare systems. The prognostic factors described in this study are derived from an international cohort of patients and may support therapy decisions made by physicians when considering abatacept for the treatment of moderate-to-severe RA. Further analyses on the complete 2-year dataset are expected to confirm these findings. Overall, these findings indicate that abatacept may be a treatment of choice in patients at high risk of disease progression.

Additional files

Additional file 1: Table S1. List of ethics committee approvals for the ACTION study in countries that enrolled patients between May 2008 and January 2011. (DOCX 28 kb)

Additional file 2: Table S2. Baseline demographics, disease characteristics, comorbidities, and previous and concomitant medications by country (analysis population). Baseline demographics, disease characteristics, comorbidities, and previous and concomitant medications by country in the analysis population. (DOCX 39 kb)

Abbreviations

ACTION: Abatacept Trial in Routine clinical practice; ATTAIN: Abatacept Trial in Treatment of Anti-TNF Inadequate responders; CCP: Cyclic citrullinated peptide; cDMARD: conventional disease-modifying anti-rheumatic drug; CI: Confidence interval; COPD: Chronic obstructive pulmonary disease; CRP: C-reactive protein; DAS: Disease Activity Score; DMARD: Disease-modifying anti-rheumatic drug; EU: European Union; EULAR: European League Against Rheumatism; HR: Hazard ratio; IV: Intravenous; MTX: Methotrexate; ORA: Orenzia and Rheumatoid Arthritis; RA: Rheumatoid arthritis; RF: Rheumatoid factor; SD: Standard deviation; SOC: System Organ Class; TNF: Tumor necrosis factor.

Competing interests

H.G. Nüßlein has received consulting fees and speaker honoraria from Bristol-Myers Squibb, Abbott, Chugai, UCB, Essex, Wyeth, Pfizer, MSD, Novartis, and Roche. R. Alten has received research grants and speaker honoraria from Bristol-Myers Squibb. M. Galeazzi has nothing to disclose. H.-M. Lorenz has received honoraria from Bristol-Myers Squibb, Abbott/Abbvie, Chugai, UCB, Pfizer, MSD, Novartis, sanofi-aventis, SOBI, Janssen-Cilag, and Roche for presentations and participation in advisory boards, and provided advice on planning of the ACTION study. M.T. Nurmohamed has received consultancy fees from Abbott, Roche, Pfizer, MSD, UCB, SOBI, and Bristol-Myers Squibb, and has received payment for lectures from Abbott, Roche, Bristol-Myers Squibb, and Pfizer. W.G. Bensen has attended advisory boards, presented data, and performed research for Bristol-Myers Squibb, Amgen, Abbott, UCB, Merck, Pfizer, Novartis, AstraZeneca, Roche, Janssen, Warner Chilcott, and sanofi-aventis. G.R. Burmester has received consulting fees from Abbott Immunology Pharmaceuticals, Bristol-Myers Squibb, Roche, Merck, and Pfizer; research grants from Abbott Laboratories, Abbott Immunology Pharmaceuticals, Bristol-Myers Squibb, and Roche; and speaker honoraria from Abbott Immunology Pharmaceuticals, Bristol-Myers Squibb, and Roche. H.-H. Peter has nothing to disclose. K. Pavelka has been a speaker for Pfizer, Amgen, MSD, Bristol-Myers Squibb, and Abbott. M. Chartier is a consultant for Bristol-Myers Squibb. C. Poncet is a consultant for Bristol-Myers Squibb. C. Rauch is an employee of Bristol-Myers Squibb. M. Le Bars is an employee of Bristol-Myers Squibb and holds stock options in the company.

Authors' contributions

HGN made a substantial contribution to the conception and design of the study, to the acquisition of data, and to the analysis and interpretation of data. RA made a substantial contribution to the conception and design of the study, and to the analysis and interpretation of data. MG made a substantial contribution to the acquisition of data, and to the analysis and interpretation of data. H-ML made a substantial contribution to the conception and design of the study, to the acquisition of data, and to the analysis and interpretation of data. MTN made a substantial contribution to the acquisition of data. WGB made a substantial contribution to the acquisition of data. GRB made a substantial contribution to the acquisition of data, and to the analysis and interpretation of data. H-HP made a substantial contribution to the acquisition of data, and to the analysis and interpretation of data. KP made a substantial contribution to the acquisition of data. MC made a substantial contribution to the conception and design of the study, to the acquisition of data, and to the analysis and interpretation of data. CP made a substantial contribution to the conception and design of the study, and to the analysis and interpretation of data. CR made a substantial contribution to the conception and design of the study, and to the analysis and interpretation of data. MLB made a substantial contribution to the conception and design of the study, and to the analysis and interpretation of data. All authors have read and approved the final manuscript.

Acknowledgments

The authors would like to thank all the physicians who participated in the ACTION study. The ACTION study was funded by Bristol-Myers Squibb. Clinical research organizations involved in the ACTION study were Archemin BVBA, Inventiv Health Clinical, TFS Trial Form Support S.r.l, and Winicker Norimed. Statistical analysis support was provided by Florence Mercier (Stat Process) and Guillaume Desachy (Excelya). Gilbert L'Italien (Executive Director, Global Health Economics and Outcomes Research) and Nathalie Schmidely (Associate Director of Real World Research) from Bristol-Myers Squibb provided input into the design and interpretation of this study. Professor Xavier Mariette, Hôpital Bicêtre, Paris, France, provided input into statistical analysis and interpretation of this analysis. The first draft of the manuscript was prepared by academic and industry authors with professional medical writing and editorial assistance provided by Stephen Moore, PhD, of Caudex, and funded by Bristol-Myers Squibb. The academic authors vouch for the completeness and accuracy of the data and data analyses, and for the fidelity of the study to the protocol.

Author details

¹University of Erlangen-Nuremberg, Rheumatologische Schwerpunktpaxis, Kontumazgarten 4, 90429 Nuremberg, Germany. ²Schlosspark-Klinik University Medicine, Berlin, Germany. ³University of Siena, Siena, Italy. ⁴University Hospital, Heidelberg, Germany. ⁵VU University Medical Center/Jan van Breeman Research Institute, Amsterdam, Netherlands. ⁶St Joseph's Hospital/McMaster University, Ontario, Canada. ⁷Charité-Universitätsmedizin, Berlin, Germany. ⁸University Medical Center Freiburg, Freiburg, Germany. ⁹Institute of Rheumatology and Clinic of Rheumatology, Charles University, Prague, Czech Republic. ¹⁰Chiltern International, Neuilly, France. ¹¹Docs International, Nanterre, France. ¹²Bristol-Myers Squibb, Munich, Germany. ¹³Bristol-Myers Squibb, Rueil-Malmaison, France.

Received: 29 October 2014 Accepted: 15 July 2015

Published online: 30 July 2015

References

1. Vicente Rabaneda EF, Herrero-Beaumont G, Castaneda S. Update on the use of abatacept for the treatment of rheumatoid arthritis. *Expert Rev Clin Immunol.* 2013;9:599–621.
2. Orenzia (250 Mg Powder for Concentrate for Solution for Infusion) Summary of Product Characteristics. [<http://www.medicines.org.uk/emc/medicine/19714/SPC/>]
3. Orenzia (125 Mg Solution for Injection) Summary of Product Characteristics. [<http://www.medicines.org.uk/emc/medicine/27216/SPC/>]
4. Product Monograph: Orenzia (Abatacept). [http://www.bmscanada.ca/static/products/en/pm_pdf/ORENCIA_EN_PM.pdf]

5. Schiff M. Subcutaneous abatacept for the treatment of rheumatoid arthritis. *Rheumatology*. 2013;52:986–97.
6. Keating GM. Abatacept: a review of its use in the management of rheumatoid arthritis. *Drugs*. 2013;73:1095–119.
7. Nüßlein H, Alten R, Galeazzi M, Lorenz HM, Boumpas D, Nurmohamed MT, et al. Real-world effectiveness of abatacept for rheumatoid arthritis treatment in European and Canadian populations: a 6-month interim analysis of the 2-year, observational, prospective ACTION study. *BMC Musculoskelet Disord*. 2014;15:14.
8. Smolen JS, Landewe R, Breedveld FC, Buch M, Burmester G, Dougados M, et al. EULAR recommendations for the management of rheumatoid arthritis with synthetic and biological disease-modifying antirheumatic drugs: 2013 update. *Ann Rheum Dis*. 2014;73:492–509.
9. Kievit W, Franssen J, Oerlemans AJ, Kuper HH, van der Laar MA, De Rooij DJ, et al. The efficacy of anti-TNF in rheumatoid arthritis, a comparison between randomised controlled trials and clinical practice. *Ann Rheum Dis*. 2007;66:1473–8.
10. Daien CI, Morel J. Predictive factors of response to biological disease modifying antirheumatic drugs: towards personalized medicine. *Mediators Inflamm*. 2014;2014:386148.
11. Gottenberg JE, Ravaut P, Cantagrel A, Combe B, Flipo RM, Schaevebeke T, et al. Positivity for anti-cyclic citrullinated peptide is associated with a better response to abatacept: data from the 'Orencia and Rheumatoid Arthritis' registry. *Ann Rheum Dis*. 2012;71:1815–9.
12. Scarsi M, Ziglioli T, Airò P. Baseline numbers of circulating CD28-negative T cells may predict clinical response to abatacept in patients with rheumatoid arthritis. *J Rheumatol*. 2011;38:2105–11.
13. Saevarsdottir S, Stawiarz L, Turesson C, Linblad S. Previous biological therapies influence drug survival in rheumatoid arthritis patients starting abatacept treatment 2006–2012. *Ann Rheum Dis*. 2013;72:626.
14. Finckh A, Iannone F, Reino JG, Neto D, Lie E, van Riel P, et al. The impact of inadequate response to prior biologic agents on abatacept drug retention in rheumatoid arthritis patients. A pan-European analysis of RA registries. *Arthritis Rheum*. 2013;65:5217.
15. Nüßlein H, Lorenz HM, Alten R, Bensen WG, Bessette L, Burmester G, et al. Efficacy and safety of abatacept treatment for rheumatoid arthritis (RA) in a real-life setting in European and Canadian populations: a 6-month interim analysis of the ACTION study. *Ann Rheum Dis*. 2011;70(Suppl3):464.
16. Arnett FC, Edworthy SM, Bloch DA, McShane DJ, Fries JF, Cooper NS, et al. The American Rheumatism Association 1987 revised criteria for the classification of rheumatoid arthritis. *Arthritis Rheum*. 1988;31:315–24.
17. World Medical Association Declaration of Helsinki. Recommendations guiding physicians in biomedical research involving human subjects. *JAMA*. 1997;277:925–6.
18. Harmonised Tripartite Guideline ICH. Guideline for Good Clinical Practice. *J Postgrad Med*. 2001;47:199–203.
19. Stewart S, Pearce P, Florey C, Du V (Ed). *Good Epidemiological Practice (GEP): IEA Guidelines for Proper Conduct in Epidemiological Research*. IEA-European Federation; 2007.
20. Nüßlein H, Alten R, Galeazzi M, Lorenz HM, Boumpas D, Nurmohamed MT, et al. Real-world efficacy and safety of abatacept treatment for RA: 12-month interim analysis of the ACTION study. *Arthritis Rheum*. 2012;64:S199.
21. World Health Organization. Global Database on Body Mass Index. http://apps.who.int/bmi/index.jsp?introPage=intro_3.html&2014
22. Leffers HC, Ostergaard M, Grintborg B, Krogh NS, Foged H, Tarp U, et al. Efficacy of abatacept and tocilizumab in patients with rheumatoid arthritis treated in clinical practice: results from the nationwide Danish DANBIO registry. *Ann Rheum Dis*. 2011;70:1216–22.
23. Forsblad-d'Elia H, Bengtsson K, Kristensen LE, Jacobsson LTH. Drug survival, efficacy and predictors for survival on tocilizumab in real-life patients with rheumatoid arthritis; results from the Swedish Biologics Register. *Arthritis Rheum*. 2012;64:S201.
24. Takeuchi T, Tanaka Y, Amano K, Hoshi D, Nawata M, Nagasawa H, et al. Clinical, radiographic and functional effectiveness of tocilizumab for rheumatoid arthritis patients—REACTION 52-week study. *Rheumatology (Oxford)*. 2011;50:1908–15.
25. Yoshida K, Tokuda Y, Oshikawa H, Utsunomiya M, Kobayashi T, Kimura M, et al. An observational study of tocilizumab and TNF-alpha inhibitor use in a Japanese community hospital: different remission rates, similar drug survival and safety. *Rheumatology (Oxford)*. 2011;50:2093–9.
26. Gomez-Reino JJ, Carmona L. Switching TNF antagonists in patients with chronic arthritis: an observational study of 488 patients over a four-year period. *Arthritis Res Ther*. 2006;8:R29.
27. Emery P, Sebba A, Huizinga TW. Biologic and oral disease-modifying antirheumatic drug monotherapy in rheumatoid arthritis. *Ann Rheum Dis*. 2013;72:1897–904.
28. Gottenberg JE, Neto D, Gomez-Reino J, Iannone F, Lie E, Canhao H, et al. Positivity for rheumatoid factor and anti-cyclic citrullinated peptide is associated with better drug retention of abatacept: data from a pan-European analysis of RA registries. *Ann Rheum Dis*. 2014;73(Suppl2):502.
29. Pieper J, Herrath J, Raghavan S, Muhammad K, Vollenhoven R, Malmstrom V. CTLA4-Ig (abatacept) therapy modulates T cell effector functions in autoantibody-positive rheumatoid arthritis patients. *BMC Immunol*. 2013;14:34.
30. Greenberg JD, Reed G, Decktor D, Harrold L, Furst D, Gibofsky A, et al. A comparative effectiveness study of adalimumab, etanercept and infliximab in biologically naive and switched rheumatoid arthritis patients: results from the US CORRONA registry. *Ann Rheum Dis*. 2012;71:1134–42.
31. Flipo RM, Sibilia J, Westhovens R, Gaillez C, Le Bars M, Poncet C, et al. Treatment with abatacept plus DMARDs over 6 months in the ATTAIN study: results show similar efficacy benefits in patients who experience primary versus secondary failure of prior anti-TNF therapy. *Rev Rhum*. 2011;78:A302.
32. Weinblatt ME, Moreland LW, Westhovens R, Cohen RB, Kelly SM, Khan N, et al. Safety of abatacept administered intravenously in treatment of rheumatoid arthritis: integrated analyses of up to 8 years of treatment from the abatacept clinical trial program. *J Rheumatol*. 2013;40:787–97.
33. Golimumab Summary of Product Characteristics. [http://www.ema.europa.eu/docs/en_GB/document_library/EPAR_-_Product_Information/human/000992/WC500052368.pdf]
34. Certolizumab Pegol Summary of Product Characteristics. [http://www.ema.europa.eu/docs/en_GB/document_library/EPAR_-_Product_Information/human/001037/WC500069763.pdf]
35. Adalimumab Summary of Product Characteristics. [http://www.ema.europa.eu/docs/en_GB/document_library/EPAR_-_Product_Information/human/000481/WC500050870.pdf]
36. Infliximab Prescribing Information. [http://www.remicade.com/remicade/assets/hcp_ppi.pdf]
37. Etanercept Summary of Product Characteristics. [http://www.ema.europa.eu/docs/en_GB/document_library/EPAR_-_Product_Information/human/000262/WC500027361.pdf]
38. Finckh A, Neto D, Iannone F, Loza E, Lie E, van Riel P, Hetland ML, et al. The impact of patient heterogeneity and socio-economic factors on abatacept retention in rheumatoid arthritis across nine European countries. *RMD open* 2015, in press.
39. Neto D, Finckh A, Iannone F, Loza E, Lie E, Van Riel PLC, et al. Differences in abatacept use in rheumatoid arthritis patients across Europe: a pan-European database analysis of abatacept in European RA registries. *Arthritis Rheum*. 2013;65:S1248.
40. Pedersen JK, Kjaer NK, Svendsen AJ, Horslev-Petersen K. Incidence of rheumatoid arthritis from 1995 to 2001: impact of ascertainment from multiple sources. *Rheumatol Int*. 2009;29:411–5.
41. Carbonell J, Cobo T, Balsa A, Descalzo MA, Carmona L. The incidence of rheumatoid arthritis in Spain: results from a nationwide primary care registry. *Rheumatology (Oxford)*. 2008;47:1088–92.
42. Miltenburger C, Gunther OH, Justo N, Karampampa K, Texier-Richard B, Schweikert B. A Survey of Barriers to Treatment Access in Rheumatoid Arthritis in France, Germany, Italy, Spain and the UK [http://www.comparatorreports.se/RA%20Barrier%20Report_FINAL_050110.pdf]
43. Kobelt G and Kasteng. Access to Innovative Treatments in Rheumatoid Arthritis in Europe [<http://www.lif.se/default.aspx?id=44400>]
44. Hockley T and Costa-Font J. A Common Disease With Uncommon Treatment. European Guideline Variations and Access to Innovative Therapies for Rheumatoid Arthritis. [<http://www.policy-centre.com/downloads/Guideline-Variations-Report-2012-Final.pdf>]
45. Lindblad S, Stawiarz L. Gender and previous treatment influence outcomes from abatacept in a 5-year rheumatoid arthritis cohort. *Ann Rheum Dis*. 2012;71:383.