

Chapter 6

Ultrastructure of mesoderm formation and development in *Membranipora membranacea* (Bryozoa: Cheilostomata)

Abstract - Mesoderm origin in Bryozoa is largely unknown. In this study, embryonic and early larval stages of *Membranipora membranacea*, a bryozoan exhibiting a planktotrophic cyphonautes larva, are investigated using mainly ultrastructural techniques. Shortly after gastrulation, an ectodermal cell which is situated centrally at the presumptive anterior pole of the larva can be recognized by its constricted apical surface and enlarged basal part. It is also distinct from other ectodermal cells by the composition of its cytoplasm. In later stages it has left the epidermis, lost its epithelial character, and is situated subepithelially, between the basal sides of the ectodermal and endodermal sheets. A blastocoelic cavity is not present at this stage. The cell divides and gives rise to a group of cells forming a muscular and neuronal strand at the anterior side of the larva. The majority of the larval musculature originates from this ingression. Despite this evidence for an ectodermal origin, additional sources of mesoderm can so far not be excluded. The literature on mesoderm origin in Bryozoa is reviewed and the results are compared to known data from other metazoan taxa.

Introduction

In contrast to the increased interest and growing body of data on the origin of mesoderm in the different groups of Bilateria (Technau and Scholz 2003), we are facing a considerable lack of detailed knowledge on the early embryogenesis in Bryozoa. On the one hand this is astounding, regarding both the long history of research on this animal group and their yet uncertain phylogenetic position. But on the other hand bryozoans are not easily accessible, especially for experimental developmental studies. This is, for example, reflected in the lack of established laboratory protocols and “model bryozoans”. In fact several detailed descriptive studies on bryozoan development are available, mainly from the late 19th and early 20th century (summarized in Nielsen 1971, Ström 1977, 1990, Reed 1991, Zimmer 1997), which have contributed tremendously to our present knowledge of bryozoan biology. Most of these, however, comprise purely external observations, which provide only insufficient

resolution for tracing internal structures like mesoderm. Therefore hypotheses on the origin of mesoderm in Bryozoa have remained rather speculative.

Species of Gymnolaemata, the largest bryozoan subtaxon, exhibit different larval types, but the early development is comparatively uniform (Ström 1977, Zimmer 1997): In most species male and female zooids mature either simultaneously or sequentially in the same colony. Nevertheless outbreeding is widespread (Silén 1966). There is indication that the eggs are usually fertilized within the maternal zooid and zygotes stay arrested in their cell cycle until spawning (Temkin 1996). Within Gymnolaemata, the planktotrophic cyphonautes larva as well as several types of lecithotrophic larvae are known (Zimmer and Woollacott 1977). Embryogenesis in species with cyphonautes larvae takes place in the water column. Lecithotrophic larvae are usually brooded in various types of brood chambers and develop either from macrolecithal eggs or are nourished via placental structures.

Many of the embryological studies that address the question of mesoderm origin assume an origin from a quartet of cells at the vegetal pole, which are also likely to produce the endoderm (e.g., Vigelius 1886, Calvet 1900, Pace 1906). This lineage is therefore often referred to as the endomesoderm. However, apart from the mentioned low resolution for internal structures, most of these studies were on species, whose larvae lack a functional gut. As this likely represents a derived condition within the Bryozoa (Zimmer and Woollacott 1977), data from the possibly more ancestral feeding larvae, the cyphonautes, are suggested to be of greater phylogenetic significance. *Membranipora membranacea* (Linnaeus, 1767) is a common cosmopolitan bryozoan that forms large colonies preferentially on laminarian kelp blades. Its cyphonautes larvae are widespread in the plankton during spring and summer months. The larvae are up to 800 µm in length and are characterized by their compressed triangular shape with two lateral chitinous shells.

In this study different embryonic and early larval stages of *M. membranacea* were examined beginning shortly before gastrulation until formation of the early swimming cyphonautes in order to get information about the origin and development of the mesoderm and to provide a structural groundwork for comparisons to other taxa as well as for forthcoming developmental studies on bryozoans. Serial sectioning for transmission electron microscopy as well as fluorescence staining techniques were applied for this approach.

Material and methods

Colonies of *Membranipora membranacea* were collected near the docks of Friday Harbour Laboratories, San Juan Island, WA, USA in May and June 2004 and kept in running sea water for several days. Reproductive colony parts were identified by observation using a

dissecting microscope. The zygotes present in the zoidal body cavities were obtained by carefully scratching the membranous frontal walls. The opened colonies were subsequently rinsed with sea water and the zygotes were separated from foreign matter using nylon meshes of different sizes. Zygotes were transferred into 200-ml custard dishes with 0.1- μm filtered seawater which were kept on a floating table at approx. 12°C. Concentrations ranged from 2-5 cells/ml. The cell cycle is arrested as long as the zygotes are inside the body cavity. Under natural circumstances they become activated during release through the supraneural canal. Activation of artificially obtained zygotes can be accomplished in vitro by exposure to seawater containing 0.01 mM EDTA (Reed 1987). When activated, the cells change their shape from disc-like to roundish. Zygotes were transferred back to 0.1- μm filtered seawater within 30 min after activation. Development was followed at constant temperature of 12°C under natural illumination. Late gastrulae and early cyphonautes were fed on an algal suspension containing a mixture of *Rhodomonas* sp., *Isochrysis galbana*, and *Dunaliella* sp. Water in the bowls was exchanged once daily and debris was removed manually by pipetting. Developmental stages were fixed at distinct intervals for fluorescence and electron microscopy.

Embryonic stages were fixed in 2.5% glutaraldehyde buffered either with 0.1 M PBS containing 0.2 M NaCl or 0.1 M sodium cacodylate containing 0.14 M NaCl for 30 min at 4°C. Specimens were stored in buffer until post-fixation with 1% osmium tetroxide (30 min, 4°C), subsequently washed in buffer, dehydrated in a graded ethanol series and embedded into Epon with propylene oxide as intermedium. Series of silver-interfering ultrathin sections were produced using a Leica UC6 microtome and Diatome diamond knives. Sections were placed on formvar-coated single-slot copper grids and automatically stained with uranyl acetate and lead citrate using a prototype of an automatic stainer. For examinations a Philips CM 120 transmission electron microscope was used at 60 kV. Images were taken on Dtabis erasable photoplates, scanned and processed using analySIS, Adobe Photoshop and ImageJ software packages.

For fluorescence staining embryos were fixed in 4% paraformaldehyde in 0.05 M PBS containing 0.3 M NaCl for 30 min at room temperature. Specimen were rinsed in the same buffer. For storage a small amount of NaN_3 was added. For f-actin staining specimens were permeabilized with a solution of 0.1% Triton-X 100 in PBS and stained with AlexaFluor-568 labelled phalloidin for 2h. For antibody staining blocking buffer (0.1% Triton-X 100, 0.1% bovine serum albumine) was applied for 2h. Specimen were incubated with primary antibody (anti-ac- α -tubulin, Sigma T-6793) at a dilution of 1:500 in blocking buffer for 10h at room temperature. After several washing steps, specimen were incubated with secondary antibody (AlexaFlour568 goat-anti-mouse, Molecular Probes A-11004) in similar way. In order to determine numbers of cells in the different stages some embryos were counterstained with the nuclear dye propidium iodide dissolved in PBS for 20 min. Stained embryos were mounted

Tab. 1: Numbers of specimens examined in the present study

Stage	hours post activation (12°C)	average number of nuclei	number of specimens examined by TEM	number of specimens examined by cLSM
early gastrula	19	64	2	4
	20.5	95	3	5
mid gastrula	22	162	5	6
	23.5	190	5	5
	25	206	4	3
late gastrula	30	322	3	4
early cyphonautes	44	-	3	6

in Citifluor glycerol solution on glass slides. Confocal image stacks were photographed on a Leica TCS SPE and processed using ImageJ. Numbers of examined specimens are given in Tab. 1.

Results

Early cleavages

The activated zygotes (Fig. 1A) are of roundish shape and 50-60 μm in diameter. They are surrounded by a transparent fertilization membrane. It fits relatively loosely around the egg and exhibits lots of wrinkles. In TEM sections (Fig. 3C) the membrane appears as a 1-1.5 μm thick, homogeneously electron-dense layer with a slightly grained outer surface. Several zygotes exhibit at one pole a translucent spot that contains less yolk and might correspond to the male nucleus (Fig. 1A). In some eggs the sperm axoneme was still stuck in the membrane (see Fig. 1B), however, because of the loose fit of the fertilization membrane, the relation of the sperm entry point to the first cleavage planes could not be determined safely.

All cleavages are total. 2-cell stages (Fig. 1B) occur as early as about 60 min post activation and further cleavages follow at slightly increasing intervals. The first and second cleavages are meridional and orthogonal to each other, resulting in a radially symmetrical embryo. The third cleavage is equatorial (Fig. 1C). No significant differences could be observed between the resulting upper and lower tier, so that up to this point all cleavages are equal. The fourth cleavage breaks the radial symmetry. Cleavage planes are parallel to the plane of the first cleavage, therefore resulting in an embryo with an animal and vegetal tier, each consisting of 2x4 cells (Fig. 1D). The cell divisions in this cleavage are more or less equal in the animal half, but not in the vegetal half, where the resulting central cells are slightly bigger than the peripheral ones. In the 32-cell stage (not shown) two tiers of 8 cells are located in the animal half. The vegetal half consists of 4 larger cells at the vegetal pole. Above these is a tier of 12

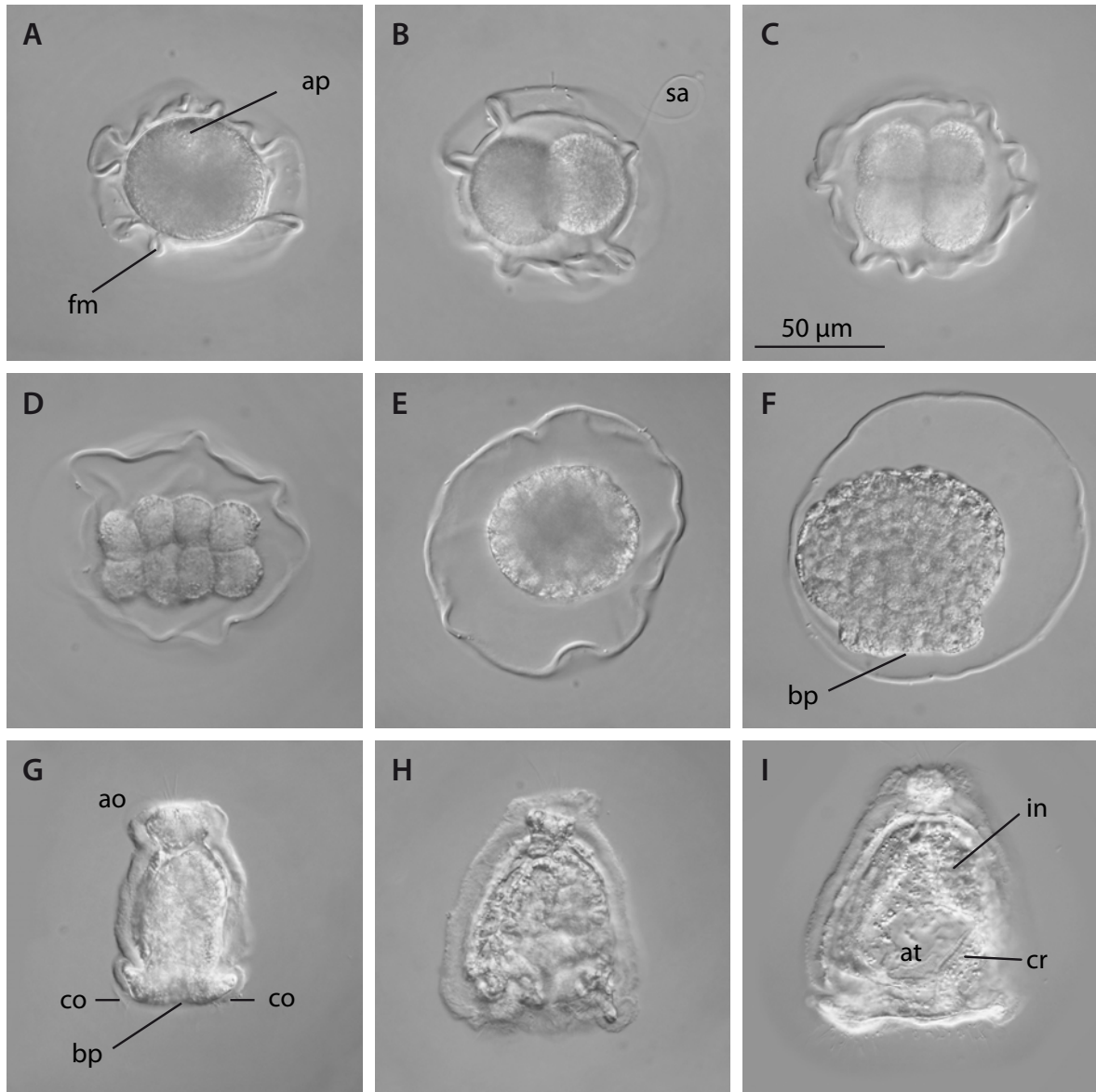


Fig. 1 Cleavage and early embryonic development, light micrographs, Nomarsky optics (DIC). **A** Zygote shortly after activation (see text). Yolk is not equally distributed in the cell. A region at the prospective apical pole (*ap*) appears considerably brighter. The fertilization membrane (*fm*) lies in folds around the cell. **B** 2-cell stage, 1 hour post activation (hpa). In some embryos a sperm axoneme (*sa*) was observed sticking in the fertilization membrane. **C** 8-cell stage, 5 hpa, view on animal pole, focal plane is on the animal tier of cells. The first two cleavages are meridional, the third is equatorial. **D** 16-cell stage, 9hpa, view on vegetal pole. Fourth cleavage is parallel to first and results in a biradially symmetric embryo with two tiers of eight cells. In the vegetal tier cleavage is slightly unequal resulting in little larger central blastomeres. **E** 64-cell stage, 18 hpa, view on animal pole. Yolk-rich macromeres at the vegetal pole have become internalized. **F** Mid gastrula, 22 hpa. In this stage about 190 cells are present in average. **G** Late gastrula, 30 hpa. An apical organ (*ao*) has formed. The blastopore opening exhibits a ciliated rim, the corona (*co*), which enables the embryo to swim. **H** Early cyphonautes, 44 hpa. In this stage a continuous gut is present. The oral surface invaginates to form the atrium, which exhibits ciliated structures for particle capturing. **I** Early cyphonautes, 72 hpa. The oral surface has invaginated forming the atrium (*at*) with lateral ciliated ridges (*cr*).

cells, 4 of which might have been cleaved off from the vegetal macromeres. The cells in the animal half now seem to divide faster than those in the vegetal half, but cleavages become hard to follow by light microscopy from the 32-cell stage on. No formation of a blastocoelic cavity was observed.

Early gastrula

Gastrulation begins at the 64-cell stage (Figs. 1E, 7A) and shows characteristics of both invagination and epiboly. The cells at the vegetal pole bend inwards forming the blastopore and the beginning archenteron (Fig. 2A, B). The ectodermal cells are much smaller and begin to overgrow the vegetal cells laterally. The archenteron is still without a lumen, but the cells of the endoderm are coupled by adherens junctions, thus representing an epithelial layer. Apical junctional complexes are, though delicate, also present in the ectodermal layer. Yolk is present in form of homogeneously electron-dense granules, ovoid to round in shape and up to 2.5 μm in diameter. The granules are found in all cells, but are most abundant in cells of the endoderm and the blastopore rim. Additionally electron lucent vesicles of similar size occur. A blastocoel is still absent. The basal cell membranes of the ectodermal and endodermal cells are directly adjacent without a visible ECM or basal lamina in between. Cell-cell junctions between ecto- and endodermal cells have not been observed. The ectodermal cells are smallest at the lateral extremities (the embryonic equator).

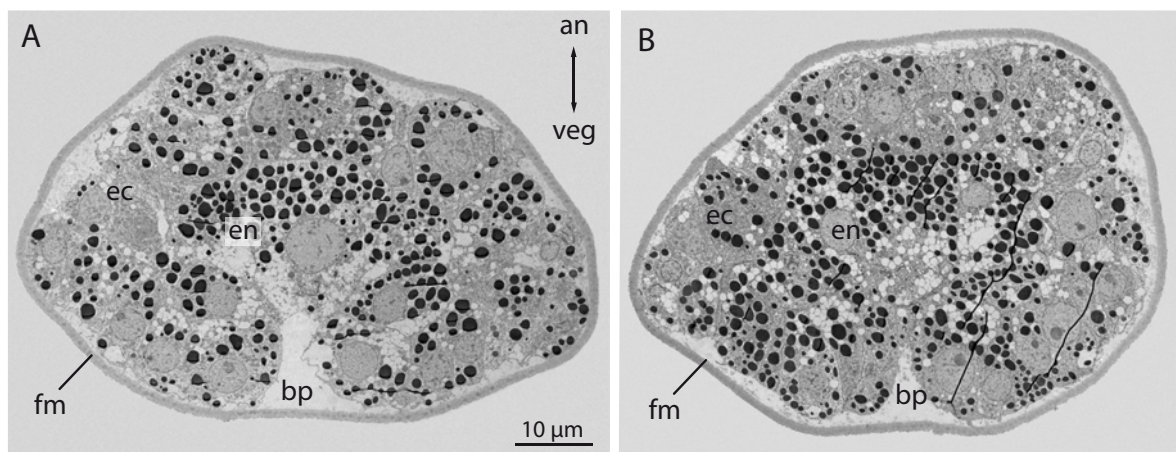


Fig. 2 Early gastrula stages, TEM micrographs. Cells at vegetal pole bend inwards forming presumptive endoderm (*en*). A small blastopore (*bp*) arises. No blastocoel is present. *an* animal, *ec* ectoderm, *fm* fertilization membrane

Mid gastrula

In 22 hour-stages (Fig. 1F), which contain approximately 190 cells, a specific ectodermal cell is recognized at the anterior side of the embryo (Figs. 3A, 7B). This cell is distinct from the other ectodermal cells in its larger volume. Its cytoplasm contains a large quantity of electron-lucent vesicles (Fig. 3A, C) and its basal region is considerably broadened in comparison to the other ectodermal cells. The apical surface is reduced, but the cell still exhibits apical adherens junctions to the neighboring cells (Fig. 3C). This cell thus most likely shows the beginning of an ingression process, as seen in embryos of slightly later temporal stages (23.5 hpa, Fig. 3B), where a cell with similar cytological characteristics is found in similar location. In these stages the cell is completely ingressed and situated between endoderm and ectoderm (Fig. 3E, 7C). It has lost its polarity and apical junctions and therefore resembles a mesenchymatic cell.

Late gastrula

During the next cell division cycles, the shape of the embryo changes considerably (Fig. 1G). The first externally visible new feature is the apical organ. This knob-like organ is formed from a group of epidermal cells at the animal pole that develop cilia and become elongate and columnar in shape. The cilia break through the fertilization membrane. The blastopore broadens and develops a conspicuous rim. The cells of the rim also develop cilia and the fertilization membrane ruptures in the blastopore region. The cilia already beat regularly, thus embryos at these stages start swimming. Apart from the apical organ the ectoderm differentiates into two distinct regions (Fig. 4A). At the anterior and posterior side of the embryo, the epithelium becomes squamous, with the cells sometimes only 1 μ m in height. In contrast the epidermal cells situated laterally acquire a columnar shape, measuring up to 10 μ m in height. These cells begin to secrete the lateral shells (Fig. 4A, E), which are characteristic of the cyphonautes larva. The cells exhibit a well-developed endoplasmic reticulum and golgi cisternae. Numerous electron-dense vesicles are found in the apical region of the cells, directly underneath the apical membrane. The vesicles are almost 150 nm in diameter and consist of a dense core surrounded by a slightly brighter halo. The developing shell is a longitudinally textured layer that contains numerous dark spots. These might originate from the above mentioned vesicles when they expel their contents via exocytosis. Outside of the developing shell, the fertilization membrane begins to rupture. The apical surfaces of the ectodermal cells never bear microvilli.

The cells of the endoderm still contain the majority of yolk vesicles. The endoderm has developed a clearly visible lumen, the archenteron. The apical sides of the endodermal cells bear short microvilli and a thin layer of glycocalyx. Apical adherens junctions are now well developed, however, septate junctions have not been observed until this stage. The distance

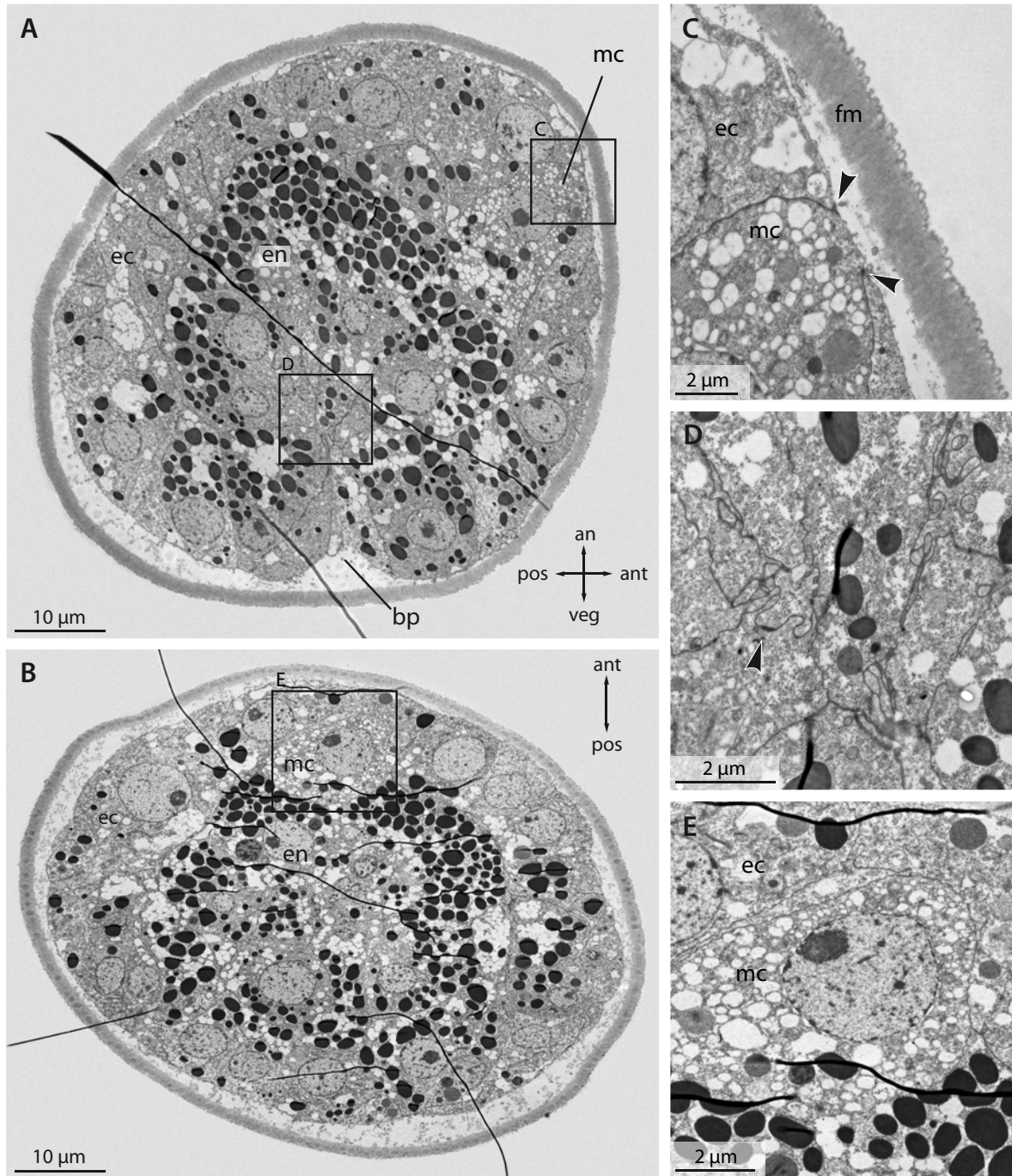


Fig. 3 Mid gastrula stages, TEM micrographs. **A** Sagittal section of 22 hpa stage. At the anterior side of the embryo, the presumptive mesodermal cell (*mc*), which is distinct from the other ectodermal cells, exhibits an expanded basal side that extends between the two epithelial sheets. **B** Horizontal section of 23.5 hpa stage. At this stage, the cell has ingressed into a subepithelial position, thus can be regarded as mesodermal. **C** Detail of apical region of cell ingressing from the ectoderm into blastocoel. Apical adherens junctions to the neighbouring cells are still present (arrowheads). The cytoplasm exhibits an exceptional amount of electron-lucent vesicles. **D** Detail of the centre of the archenteron. Apical regions of endodermal cells are connected by adherens junctions (arrowhead). **E** Detail of first mesodermal cell. *an* animal, *ant* anterior, *bp* blastopore, *ec* ectoderm, *en* endoderm, *fm* fertilization membrane, *pos* posterior, *veg* vegetal

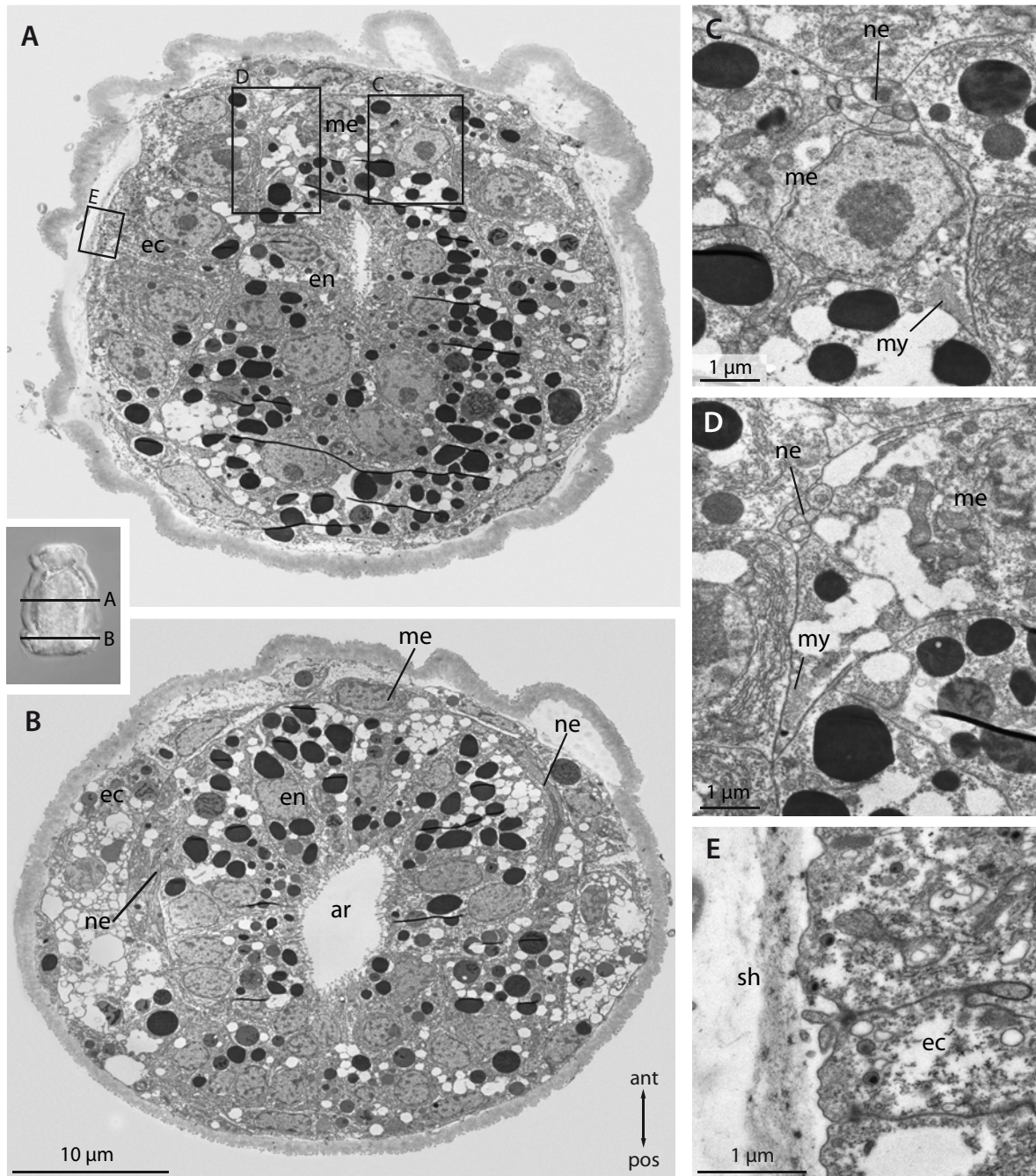


Fig. 4 Late gastrula stages, TEM micrographs. **A** Horizontal section from central region as indicated in inset. **B** Horizontal section from oral region as indicated in inset. **C,D** Details of anterior region showing mesodermal cells (*me*) located between ectoderm (*ec*) and endoderm (*en*). A large central cell is flanked by two thinner lateral ones that exhibit strands of myofilaments (*my*). Adjacent to the mesoderm are two nerve bundles (*ne*) coming from the apical organ and running towards the blastopore rim. **E** Detail of shell (*sh*) secretion. Lateral epidermal cells bear specific electron-dense vesicles. *ant* anterior, *ar* archenteron, *pos* posterior

between the basal sides of the ectoderm and endoderm cells has become wider, indicating the beginning formation of an extracellular matrix. On the anterior side mesodermal cells are found (Fig. 4A-D, 7D). These are mesenchymal, apolar, and arranged in a strand reaching from the rim of the blastopore toward the basal side of the apical organ. About four cells are present in this stage, overlapping each other in the strand. They are flanked laterofrontally by two nerve bundles running from the apical organ to the blastopore rim, where they proceed posteriorly (Fig. 4B). Laterally, the mesodermal cells exhibit bundles of myofilaments, characterising them as presumptive muscle cells.

Early cyphonautes larvae

The characteristics of the cyphonautes larva can be recognized in stages of about 44 h (Figs. 1H, 7E). These exhibit a roughly triangular shape with externally visible lateral shells. The fertilization membrane still covers the anterior and posterior side (Fig. 5A-D). The gut has curved to the posterior end of the oral side and opens with an anus there. The pharyngeal region can be distinguished from the intestine by its wide lumen and its ciliation (Fig. 5B). The pharynx forms the ascending part of the gut while the intestine forms the descending part. The pharynx epithelium is corrugated with its cells being rather thin (0.5-3 μm). They bear short apical microvilli and a delicate glycocalyx. The intestine is characterized by its large voluminous gastrodermic cells which exhibit long apical microvilli and lack cilia. The larvae start foraging immediately after the anus has formed, so that algal cells can be found in the gut. The oral surface has invaginated to form the atrium (Fig. 5C, D). This area is densely ciliated, especially along two lateral ridges (Fig. 5C, F). The cells of the oral surface bear microvilli and a glycoclayx, resembling those of the pharyngeal cells.

The apical organ (Fig. 5A, D) has increased in size and exhibits a centrally located cell that bears vertically arranged bundles of myofilaments (Figs. 5E, 6B). Characteristic in this stage is the occurrence of an extensive fluid-filled primary body cavity between epidermis and gut epithelium. Coelomic spaces are absent. The mesoderm mainly comprises the already well-differentiated musculature. Different muscular compartments can be recognized. On the anterior side, a strand composed of a few muscle cells connects the basal side of the apical organ to the site of the developing pyriform organ (Figs. 5B, E, 6C). Parallel to the muscles run 2-3 nerve bundles (Figs. 5B, F, 6C). The pharynx is encompassed by myofilamentous processes of mesodermal cells (Figs. 5A, B, E, 6A, D). Lateral muscles are present in the body cavity and underneath the ciliated ridges (Figs. 5B, C, E, 6D, F). Further muscles are present on the posterior side of the larva and parallel to the corona (Figs. 5B, E, 6E).

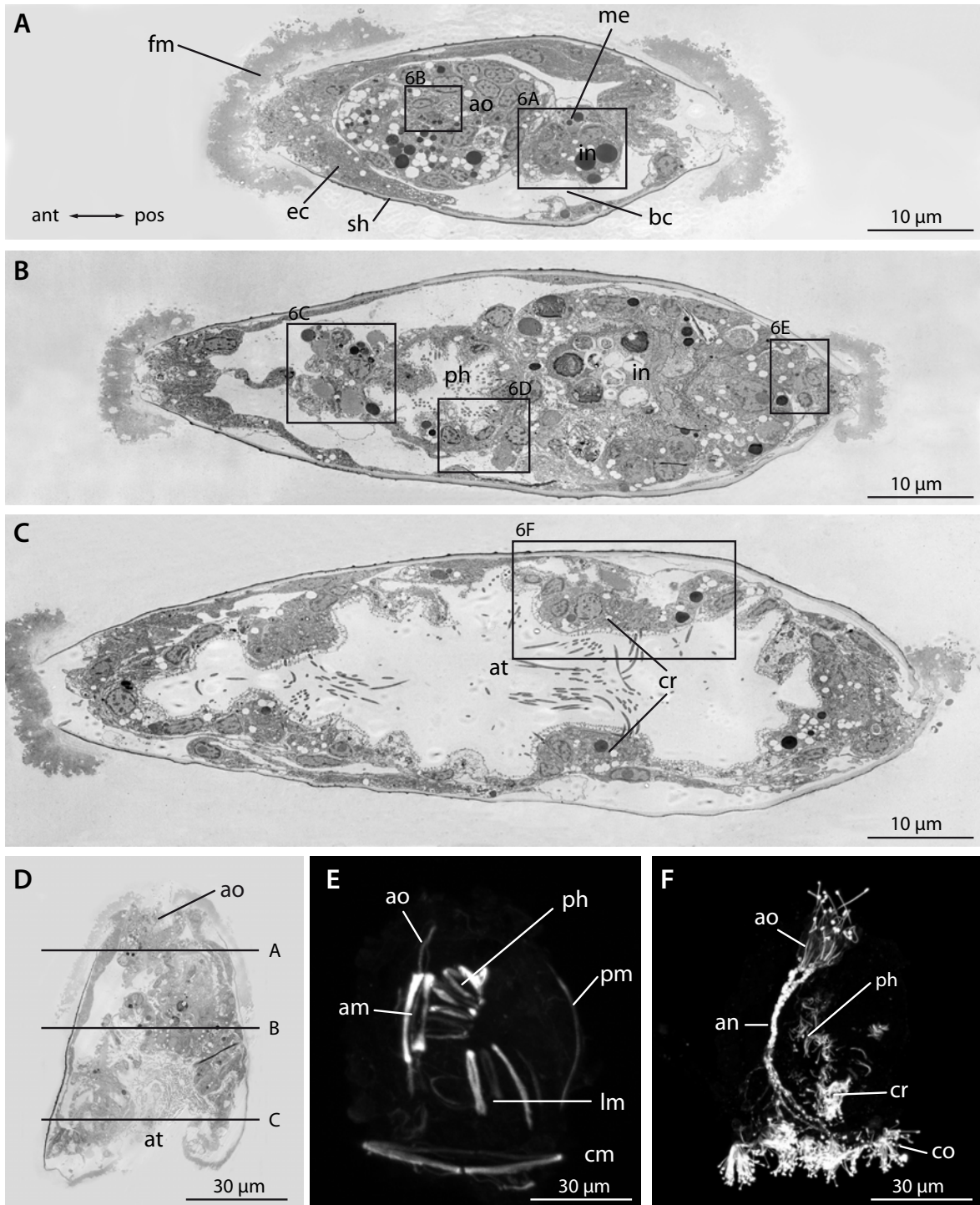


Fig. 5 Early cyphonautes larva. **A-D** TEM micrographs. **A-C** Selected horizontal sections, planes as indicated in **d**. **A** Apical region. Section of apical organ (*ao*) and tangential section of intestinal tract (*in*) ensheathed with mesodermal muscle cells (*me*). **B** Middle region, cross section of anterior muscle and nerve strand, pharynx (*ph*) and intestine (*in*). **C** Oral region showing atrium (*at*) and ciliated ridges (*cr*). **D** Sagittal section. **E** Phalloidin staining of musculature, lateral view, projection of full confocal stack. **F** α -tubulin staining (cilia and nerve processes), lateral view, projection of full confocal stack. *am* anterior median muscle, *an* anterior nerve, *ant* anterior, *bc* primary body cavity, *cm* coronal muscle, *co* corona, *ec* ectoderm, *fm* fertilization membrane, *lm* lateral muscles, *pm* posterior muscle, *pos* posterior, *sh* shell

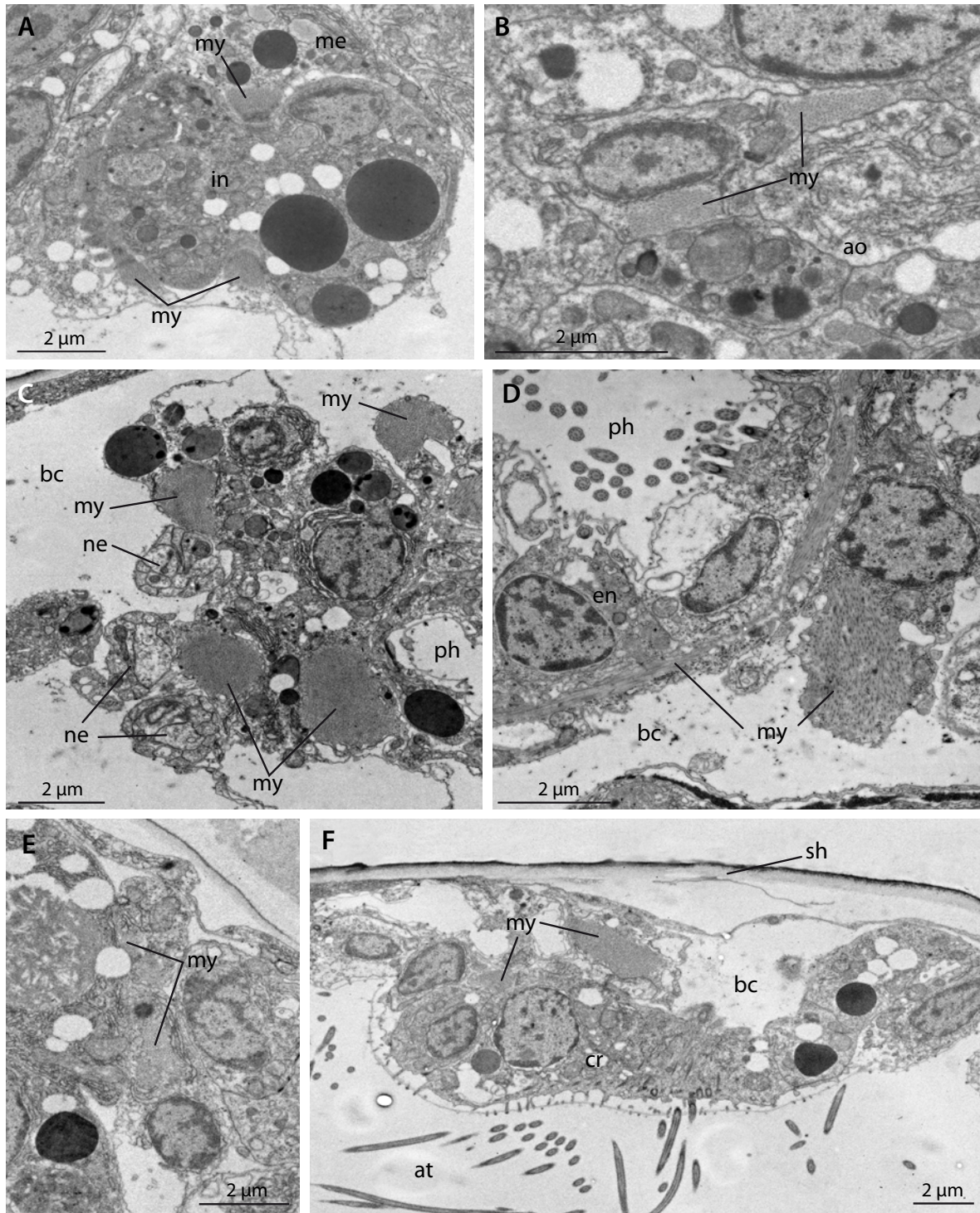


Fig. 6 Early cyphonautes larva, details of mesoderm and musculature from regions indicated by squares in Fig. 5a-c, TEM micrographs. **A** Tangential section of curved intestinal tract. The gut epithelium (*in*) is surrounded by myofilamentous processes (*my*) of mesodermal cells (*me*). **B** A cell located centrally in the apical organ (*ao*) bears vertically arranged bundles of myofilaments. **C** The anterior muscle strand is formed by several mesodermal cells that reside in the blastocoel (*bc*) and are adjacent to the anterior pharyngeal (*ph*) wall. Nerve bundles (*ne*) run parallel to the muscle cells. **D** The pharynx epithelium is surrounded by circular muscle fibres. Longitudinal muscle cells lie at the posterolateral side of the pharynx **e** Longitudinal muscle cells at the posterior end between intestine and epidermis **f** Muscles in the lateral body cavity and ciliated ridge (*cr*). *at* atrium, *en* endoderm, *sh* shell

Discussion

General embryology

The embryology of species with cyphonautes larvae has been examined in *Alcyonidium albidum*, *Hypophorella expansa* and *Electra pilosa* (Prouho 1892), *E. pilosa*, *Farrella repens* (Marcus 1926), *Conopeum seurati*, *Electra crustulenta* (Cook 1962), *Conopeum tenuissimum* (Dudley 1973) and *Membranipora serrilamella* (Mawatari and Mawatari 1975). The early stages of *Triticella koreni*, investigated by Ström (1969), resemble those in species with cyphonautes larvae, but this larva is probably not planktotrophic. The most detailed investigation is that of Prouho (1892), who applied sectioning and histology on the embryos.

The cleavage pattern and the overall early embryogenesis observed in these works are in accordance with the results of the present study and will therefore not be discussed further. However, some discrepancies have been identified: One point is the occurrence of a blastocoelic cavity in blastula and gastrula stages. This was reported by Prouho (1892), and is also found in many lecithotrophic embryos (see below), but could not be substantiated in the present study. A fluid-filled primary body cavity is not formed until the early shelled stages and vanishes again later. This partly influences the description of the gastrulation, as an invagination is per definition linked to a coeloblastula. In *M. membranacea*, the presumptive endoderm is partly overgrown by the ectoderm. This mode thus resembles an epibolic gastrulation. Another point is the occurrence of a blastopore and its closure. Prouho (1892) assumed that the blastopore is closed after the internalization of the presumptive endodermal cells and that both the larval mouth and anus originate secondarily. This is also described from lecithotrophic larvae. The present results argue for the persistence of the blastopore as larval mouth (protostomy) in *M. membranacea*. However, because of the atrial invagination it is not unproblematic to localize the position of the larval mouth exactly.

Mesoderm formation in Gymnolaemata

The results presented here provide evidence for an ectodermal origin of the first mesodermal cell. This cell is situated in the anterior epidermis and ingresses to a position between the basal sides of ectoderm and endoderm. No blastocoel is present at this stage. The cell loses its polarity and acquires mesenchymal characters. Such a process is generally referred to as epithelial-mesenchymal transformation (EMT) and is involved in developmental processes (e.g., gastrulation, mesoderm formation) in many metazoan taxa (see Shook and Keller 2003 for review). The described event is so far the only ingression observed in the development of *M. membranacea*. However, due to the low temporal resolution of the applied method the occurrence of further ingression events in the course of embryogenesis can so far not be excluded.

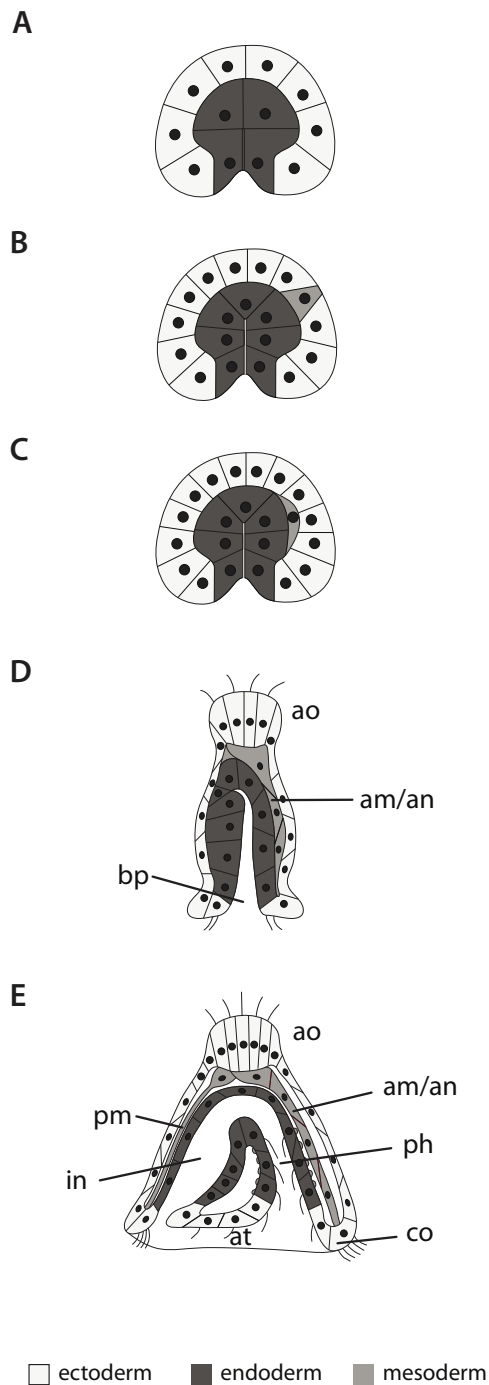


Fig. 7 Schematic representation summarizing results from present study. **A** Early gastrula **B** Mid gastrula with beginning ingression of presumptive mesodermal cell. **C** Mid gastrula with ingressed mesodermal cell. **D** Late Gastrula **E** Early cyphonautes larva. *am* anterior muscle, *an* anterior nerve, *ao* apical organ, *at* atrium, *bp*, blastopore, *co* corona, *in* intestine, *ph* pharynx, *pm* posterior muscle

Prouho (1892), in embryonic stages of *A. albidum*, observed two mesodermal cells to appear shortly after gastrulation and subsequent blastopore closure. These cells are distinct from the other internal cells and reside laterally in the anterior end of the embryo. However, Prouho refrained from making definitive statements about the origin of these cells. During the later development he observed mesodermal cells to arrange in a row at the apical end of the larva and suspected these cells to give rise to musculature. The situation in the other species examined by him (*H. expansa*, *E. pilosa*) is said to be essentially similar. Marcus (1926) described gastrulation in both *E. pilosa* and *Farrella repens* to occur by polar ingression of the vegetal cells. He did not observe the first mesoderm cells mentioned by Prouho, but in later stages of *F. repens* he was able to differentiate between larval mesenchyme situated in the anterior end of the larva and the forming intestinal tract in the posterior side. Mawatari and Mawatari (1975) state the gastrula in *M. serilamella* to be filled with ectodermal cells, but it remains unclear why the authors regard them as ectodermal and if they actually have observed their formation.

A larger number of observations on the origin of mesodermal cells have been made in species with lecithotrophic larvae. Most of these suggest an endodermal origin, but the presumed mechanisms differ considerably. Barrois (1880) described in *Lepralia* sp. the temporary occurrence of two cell stripes lateral to a mass of endodermal cells. In later stages, these stripes reunite with the remaining endoderm to a homogeneous mass. The author interpreted the mesodermal stripes as correlates to germ bands, which occur e.g., in polychaetes. However, it is unclear

which species he actually investigated, since *Lepralia* is not a valid genus name and has been synonym of many other genera. Calvet (1900) observed in *Bugula simplex* (as *B. sabatieri*), *Cellaria fistulosa* and *Bowerbankia pustulosa* a proliferation of cells from the vegetal pole into the blastocoel. He appointed them as endoderm though they never give rise to an intestinal tract in these species but instead to mesenchyme and musculature. Pace (1906) described a mesenchymatic mass of mesendodermal cells, derived from the vegetal quartet, to fill the blastocoel of early embryos in *Flustrellidra hispida* (shelled lecithotrophic larva). Endodermal and mesodermal cells are not distinguishable in this mass. The blastopore is stated to be closed subsequently and a non-functional pharynx is formed during a later invagination of the oral epithelium. In *Bugula flabellata*, a species exhibiting a coronate larva, localized delamination of the vegetal cells leads to the formation of an archenteron (Corrêa 1948). The archenteron is described to disintegrate later giving rise to mesenchyme which soon fills the entire blastocoel. This tissue also forms swellings around the apical organ and the neuromuscular strand. Corrêa (1948) mentioned the neuromuscular strand to consist of ectomesenchym, but without further explanation or documentation. Vigelius (1886) described the internalization of the four vegetal macromeres in *Bugula calathus* to occur by epiboly. Neither an archenteron nor a persistent blastopore were found in later embryonic stages. He has observed no distinct mesodermal anlage, thus regards the internal mesenchyme as mesendodermal. Based mainly on observations on *Alcyonidium gelatinosum* (as *A. polyoum*) in comparison to own and previous observations in further species, d'Hondt (1983) assumed that the vegetal quartet generally gives rise to mesoderm in bryozoan species lacking a gut and to mesoderm and endoderm in species with a gut.

In fully grown gymnolaemate larvae several different mesodermal tissues are recognized (Reed 1991). Apart from muscle cells, the most abundant cell type is mesenchyme. These cells fill most of the space between ectoderm and endoderm resulting in a compact organization of the larval body without blastocoelic spaces. Three different types of mesenchymatic cells have been distinguished in *Bowerbankia gracilis* (Reed and Cloney 1982). Some of the mesenchymatic cells become phagocytotic during metamorphosis and are possibly involved in histolytic processes. In *Bugula neritina* pigment cells are situated underneath the larval epidermis (Reed and Woollacott 1982). Some, often well-organized, mesodermal components have been identified to contribute to the anlage of the ancestrular polypide, therefore can be seen as precursors of the adult mesoderm, more specifically the coelomic epithelium: In larvae of *B. neritina* and other cellularioid cheilostomes so-called mesodermal blastemata are situated underneath the apical disc (Reed 1991). In vesiculariid ctenostome larvae the polypide rudiment is represented by a median mesodermal band connected to the roof of the internal sac (Reed and Cloney 1982, Zimmer and Woollacott 1993). Both these elements are found in larvae of *Watersipora arcuata* (Zimmer and Woollacott 1989). It is not clear, whether these different mesodermal cells arise independently or originate from a single

mesodermal anlage. Woollacott and Zimmer (1971) hypothesized an ectodermal origin of the mesodermal blastema in *Bugula neritina* based on ultrastructural similarities with the associated ectodermal cells of the apical disc. In larvae of *M. membranacea*, however, the mesoderm is relatively uniform (Stricker et al. 1988). An accumulation of mesodermal cells, which might contribute to the polypid anlage, is described underneath the apical organ, but these cells are undifferentiated, resembling mesenchymatic cells.

Cyclostomata and Phylactolaemata

In terms of mesoderm formation both cyclostomes and phylactolaemates most likely exhibit extremely derived patterns. In cyclostomes the origin of mesoderm is obscured by the process of polyembryogeny which is commonly found in these species (Harmer 1893, 1898, Calvet 1900, Robertson 1903, Borg 1927, Nielsen 1970, 1971). The zygotes cleave irregularly forming a solid mass from which secondary embryos are divided off. The latter appear bilayered, but it is not clear how the central layer originates. Only Robertson (1903) described newly budded secondary embryos to be solid and later to consist transitionally of only one layer surrounding a blastocoel-like cavity in *Crisia eburnea*. Even a determination of the site of proliferation would not contribute to the understanding of mesoderm origin as polarity of these embryos is uncertain. The larvae are lecithotrophic and remain gutless. Metamorphosis in cyclostomes is not fully understood. A bilayered polypide bud occurs. However, it is uncertain if the central cells contribute to this. Nielsen (1970) suggests the prospective mesodermal layer of the bud to originate from the ectodermal layer by delamination.

The larvae of phylactolaemate bryozoans are not comparable to those of gymnolaemates. They lack the organs usually found in gymnolaemate larvae, but exhibit polypide buds. Because of this precocial character and the apparent lack of transitional tissues they are sometimes regarded as representing swimming young colonies rather than larvae (Nielsen 1971). Embryology has been observed in *Cristatella mucedo*, *Plumatella polymorpha* (Davenport 1891), *Plumatella* sp. (Kraepelin 1892), *Plumatella fungosa* (Braem 1890, 1897, Brien 1953), *Fredericella sultana* (Braem 1908) and *Lophopus crystallinus* (Marcus 1934). The fertilized eggs are brooded in internal embryo sacs which are attached to the body-wall. All workers agree that at some point during development an elongated embryo appears, which exhibits two epithelial layers surrounding a central lumen. Observations on the formation of this stage, however, remain contradictory: Davenport (1891) reported the ingression of four cells from the distal pole (the pole facing the zooids body-wall) at an early stage. He postulates these cells to give rise to the internal cell layer, which is said to represent mesoderm and endoderm. Kraepelin (1892) confirms Davenports results, whereas Braem (1897) in *Plumatella* also observed this ingression, but found these cells as isolated internal cells in a later monolayered stage. The internal layer is said to originate from a second phase of proliferation, also from the distal pole. These proliferated cells form an internal cavity, a coelom,

which confines the blastocoel towards the proximal pole in the course of development. The author therefore interpreted the first proliferation as gastrulation, the second as mesoderm formation. Brien (1953) also found a stage like the gastrula observed by Davenport and Braem, but did not confirm a second ingression. In *F. sultana*, on the contrary, Braem (1908) reported the occurrence of a blastula stage which is hollow only in the distal part, but solid in the proximal part. Mesodermal cells proliferate from the border region between both parts into the upper blastocoel. At a later stage a coelomic cavity is formed in the proximal part, whereas the blastocoel persists in the distal part. Marcus (1934) also observed a central constriction in the embryos of *L. crystallinus*, but with both resulting parts being hollow. Internal cells occur in both parts, whereas those in the upper part are hypothesized as endoderm, those in the lower part as mesoderm. However, the exact origins of these tissues were not observed. D'Hondt (2005) interpreted the formation of thickened cells at the distal part as an aberrant form of gastrulation. Thus, according to the author, mesoderm proliferating from these regions should be regarded as endomesoderm.

Comparison to other taxa

Mesoderm in most spiralian taxa is of dual origin (see Nielsen 2001, 2004, 2005, Lambert 2008). Mesodermal elements that go back to the 4d micromere are usually referred to as endomesoderm. These typically comprise the lateral germ bands, which give rise to longitudinal musculature as well as, in annelids, to coelomic vesicles and segmental musculature. The second type, ectomesoderm, is in most cases derived from the second and/or third quartet of micromeres, members of otherwise ectodermal lineages. Ectomesoderm is sometimes also referred to as larval mesoderm, because in many cases it forms musculature of the pretrochal region, which vanishes during metamorphosis or later development. However, this split may not apply in all species and the exact lineage of ectomesoderm is variable within the Spiralia (Boyer and Henry 1998, Ackermann et al. 2005, Hejnol et al. 2007). Nevertheless, both types of mesoderm might have already been present in the ancestral spiralian, and modifications in the extent and exact origin of ectomesoderm are probably due to different adaptations in different larval types (Boyer et al. 1996, 1998, Henry and Martindale 1998, 1999).

In most descriptive studies on phoronid development, the mesoderm is assumed to originate from single cells ingressing from the archenteron (e.g., Herrmann 1980, Zimmer 1980). On the contrary, fate-mapping studies conducted by Freeman and Martindale (2002) have shown that mesoderm arises from both endoderm and ectoderm, and that its formation is likely to be induced at the endoderm-ectoderm boundary. Mesodermal cells migrate freely in the blastocoel and differentiate into muscle, nerve and mesenchymal cells. It is not known if ectodermally derived cells contribute to different elements than endodermally derived ones. Ingression of mesenchymal cells before gastrulation as stated by some authors (e.g., de Selys-Longchamps 1907, Zimmer 1964, Herrmann 1986). This has not been corroborated

by studies on *Phoronis pallida* by (Santagata 2004). Grobe (2008) found mesodermal cells, possibly delaminated from vegetal cells, in blastula stages of *P. ovalis*, but firstly in gastrula stages in *P. muelleri*.

Though several earlier studies assume an archenteric origin of mesoderm and coelomic cavities, Brachiopoda do not appear to show a uniform pattern of mesoderm formation. This coincides with a considerable diversity in cell fates and specification mechanisms found among brachiopod subtaxa (Freeman 2003). A comprehensive review of brachiopod development is found in Nielsen (2005). Mesoderm develops from the boundary between endoderm and ectoderm in the inarticulates *Glottidia pyramidata* (Freeman 1995) and *Discinisca strigata* (Freeman 1999) during gastrulation, but from the archenteric walls in later gastrulae in *Novocrania anomala* (Nielsen 1991, Freeman 2000). In the latter species the mechanism is thought to be either from a single anlage growing from near the blastopore towards the anterior pole (“modified enterocoely”) (Nielsen 1991) or multipolar ingression over the whole length of the archenteron (Freeman 2000). In the articulates mesoderm is reported to originate from the archenteron either by lateral outpouching (Long and Stricker 1991), delamination (Freeman 1993) in *Terebratalia septentrionalis* or by outgrowth of an initially compact cell mass in *Calloria inconspicua* and *Notosaria nigricans* (Lüter 2000). There is no evidence for an ectodermal origin of mesodermal elements in Brachiopoda. Larval musculature is mainly formed from coelomic myoepithelial cells (Lüter 2000).

Basal deuterostomes are generally regarded to completely lack ectomesoderm. In enteropneusts the protocoel unequivocally arises by enterocoely (Nielsen 2001) and larval muscles are part of this coelomic epithelium (Ruppert and Balser 1986). Meso- and metacoels arise from the wall of the stomach either by outpouching or from cells delaminating from the gut (Peterson et al. 1999). Only the hydropore and the distal part of the hydrocanal are likely to originate from ectoderm (Ruppert and Balser 1986). Additionally, scattered mesenchyme cells are found in the blastocoel (Tagawa et al. 1998). These have been suggested to be of ectodermal origin in earlier works (Morgan 1891). However, fate-mapping studies by Henry et al. (2001) showed that vegetal micromeres give rise to both the archenteron and the mesoderm (protocoel, wandering mesenchyme, muscle strand, hydrocanal). In the pterobranch *Rhabdopleura compacta*, primary mesenchyme is formed in the blastula stage, whereas mesoderm is formed by ingression from the archenteron (Dilly 1973).

In many echinoderms also two mesenchyme cell ingressions occur. Ingression of primary, skeletogenic, mesenchyme takes place before gastrulation and goes back to eight large vegetal macromeres. Secondary mesenchyme ingresses from the archenteron during gastrulation. Later the anterior part of the archenteron gives rise to coelomic sacs and muscle cells (Wray 1997). Primary mesenchyme ingression is possibly derived by heterochrony within echinoderms. Anyway, due to its origin before gastrulation, no ectodermal relationship can

be established (Davidson et al. 1998). Similar as in the tornaria, the hydropore and distal part of the pore canal might be ectodermal (Ruppert and Balser 1986).

Conclusion

The phylogenetic significance of mesoderm origin and formation was vividly discussed and is still under discussion (for example Rieger and Ladurner 2003, Technau and Scholz 2003, Nielsen 2005, Burton 2008, Lambert 2008). Of course the mechanisms of mesoderm formation are still not fully understood, thus phylogenetic inferences have to be drawn carefully. The present results show, that there is reason to regard at least part of the mesoderm in Bryozoa to originate from the ectoderm. This parallels the situation found in spiralian and eventually in phoronids. Considering the currently hypothesized position of Bryozoa within the Lophotrochozoa (Passamanek and Halanych 2004, Halanych 2004, 2006, Waeschenbach et al. 2006, Helmkamp et al. 2008, Dunn et al. 2008), the question arises, whether the character of ectodermally derived larval mesoderm represents an ancestral lophotrochozoan trait, and, if this is the case, whether it is plesiomorphic, thus has been lost in deuterostomes, or apomorphic. These questions are tempting, however, the evidence summarized here, still appears insufficient to address such fundamental questions. Further studies, most suitably combined morphological, cell lineage and gene expression approaches on origin and early differentiation of mesoderm have to be awaited.

Acknowledgments

I would like to thank Thomas Bartolomaeus (Berlin) for helpful comments and discussions on the manuscript. Many thanks go to Dennis Willows for providing facilities at Friday Harbour Laboratories (Washington, USA) and especially to Richard Strathmann for helpful advice on rearing of *Membranipora* embryos.

References

- Ackermann C, Dorresteyn A, Fischer A (2005) Clonal domains in postlarval *Platynereis dumerilii* (Annelida : Polychaeta). *J Morphol* 266:258-280
- Barrois J (1880) Mémoire sur la métamorphose des Bryozoaires. *Ann Sci Nat Zool Ser* 13 9:1-67 + 4pls
- Borg F (1927) Studies on recent cyclostomatous Bryozoa. *Zoologiska bidrag från Uppsala* 10:181-507
- Boyer BC, Henry JJ, Martindale MQ (1996) Dual origins of mesoderm in a basal spiralian: Cell lineage analyses in the polyclad turbellarian *Hoploplana inquilina*. *Dev Biol* 197:329-338

- Boyer BC, Henry JJ, Martindale MQ (1998) The cell lineage of a polyclad turbellarian embryo reveals close similarity to coelomate spiralian. *Dev Biol* 204:111-123
- Boyer BC, Henry JQ (1998) Evolutionary modifications of the Spiralian developmental program. *Amer Zool* 38:621-633
- Braem F (1890) Untersuchungen über die Bryozoen des süßen Wassers. *Zoologica* 2:1-134
- Braem F (1897) Die geschlechtliche Entwicklung von *Plumatella fungosa*. *Zoologica* 10:1-96
- Braem F (1908) Die geschlechtliche Entwicklung von *Fredericella sultana*. *Zoologica* 52:1-37
- Brien P (1953) Études sur les Phylactolémates Evolution de la zoeie - Bourgeonnement d'accroissement Bourgeonnement statoblastique - Embryogenese - L'Ontogenese multiple. *Ann Soc R Zool Belg* 84:301-444
- Burton PM (2008) Insights from Diploblasts; the Evolution of Mesoderm and Muscle. *J Exp Zool* 310B:5-14
- Calvet L (1900) Contribution à l'histoire naturelle des bryozoaires ectoproctes marins. *Trav Inst Zool Univ Montpellier* 8:1-488
- Cook PL (1962) The early larval development of *Membranipora seurati* (Canu) and *Electra crustulenta* (Pallas), Polyzoa. *Cah Biol Mar* 3:57-60
- Corrêa DD (1948) A embryologia de *Bugula flabellata* (J.V. Thompson) (Bryozoa Ectoprocta). *Zoologia, Sao Paulo* 13:7-71
- d'Hondt JL (1983) Sur l'évolution des quatre macromères du pôle végétatif chez les embryons de Bryozoaires Eurystomes. *Cah Biol Mar* 24:177-185
- d'Hondt JL (2005) État des connaissances sur le développement embryonnaire des Bryozoaires Phylactolaemates. *Denisia* 16:59-68
- Davenport CB (1891) Observations on budding in *Paludicella* and some other Bryozoa. *Bulletin of the Museum of Comparative Zoology* 22:1-114, pls
- Davidson EH, Cameron RA, Ransick A (1998) Specification of cell fate in the sea urchin embryo: summary and some proposed mechanisms. *Development* 125:3269-3290
- de Selys-Longchamps M (1907) *Phoronis*. *Fauna und Flora des Golfes von Neapel* 30:1-280
- Dilly PN (1973) The larva of *Rhabdopleura compacta* (Hemichordata). *Mar Biol* 18:69-86
- Dudley JE (1973) Observations on the reproduction, early larval development, and colony astogeny of *Conopeum tenuissimum* (Canu). *Chesap Sci* 14:270-278
- Dunn CW, Hejnol A, Matus DQ, Pang K, Browne WE, Smith SA, Seaver E, Rouse GW, Obst M, Edgecombe GD, Sorensen MV, Haddock SHD, Schmidt-Rhaesa A, Okusu A, Kristensen RM, Wheeler WC, Martindale MQ, Giribet G (2008) Broad phylogenomic sampling improves resolution of the animal tree of life. *Nature* 452:745-7U5
- Freeman G (1993) Regional Specification during Embryogenesis in the Articulate Brachiopod *Terebratalia*. *Dev Biol* 160:196-218

- Freeman G (1995) Regional Specification during Embryogenesis in the Inarticulate Brachiopod *Glottidia*. *Dev Biol* 172:15-36
- Freeman G (1999) Regional specification during embryogenesis in the inarticulate brachiopod *Discinisca*. *Dev Biol* 209:321-339
- Freeman G (2000) Regional specification during embryogenesis in the inarticulate brachiopod *Crania anomala*. *Dev Biol* 227:219-238
- Freeman G (2003) Regional specification during embryogenesis in Rhynchonelliform brachiopods. *Dev Biol* 261:268-287
- Freeman G, Martindale MQ (2002) The origin of mesoderm in phoronids. *Dev Biol* 252:301-311
- Grobe, P (2008) Larval Development, the Origin of the Coelom and the Phylogenetic Relationships of the Phoronida. Free University of Berlin, Germany
- Halanych KM (2004) The new view of animal phylogeny. *Ann Rev Ecol Syst* 35:229-256
- Harmer SF (1893) On the occurrence of embryonic fission in cyclostomatous Polyzoa. *Q J Micr Sci N S -Lond* 34:199-241
- Harmer SF (1898) On the development of *Tubulipora*, and some British and northern species of this genus. *Q J Microsc Sci* 41:73-157
- Hejnal A, Martindale MQ, Henry JQ (2007) High-resolution fate map of the snail *Crepidula fornicata*: The origins of ciliary bands, nervous system, and muscular elements. *Dev Biol* 305:63-76
- Helmkamp M, Bruchhaus I, Hausdorf B (2008) Multigene analysis of lophophorate and chaetognath phylogenetic relationships. *Mol Phylogenet Evol* 46:206-214
- Henry JJ, Martindale MQ (1998) Conservation of the spiralian developmental program: Cell lineage of the nemertean, *Cerebratulus lacteus*. *Dev Biol* 201:253-269
- Henry JJ, Martindale MQ (1999) Conservation and innovation in spiralian development. *Hydrobiologia* 402:265-
- Henry JQ, Tagawa K, Martindale MQ (2001) Deuterostome evolution: early development in the enteropneust hemichordate, *Ptychodera flava*. *Evolution & Development* 3:375-390
- Herrmann K (1980) Die archimere Gliederung bei *Phoronis muelleri* (Tentaculata). *Zool Jb Anat Ontog Tiere* 103:234-249
- Herrmann K (1986) Die Ontogenese von *Phoronis mülleri* (Tentakulata) unter besonderer Berücksichtigung der Mesodermdifferenzierung und Phylogense des Coeloms. *Zool Jb Anat Ontog Tiere* 114:441-463
- Kraepelin K (1892) Die Deutschen Süßwasser-Bryozoen. Eine Monographie. II. Entwicklungsgeschichtlicher Teil. *Abhandlungen des naturwissenschaftlichen Vereins Hamburg* 12:1-67 +pls
- Lambert JD (2008) Mesoderm in spiralian: the organizer and the 4d cell. *J Exp Zoolog B Mol Dev Evol* 310:15-23
- Long JA, Stricker SA (1991) Brachiopoda. In: Giese AC, Pearse JS, Pearse VB (eds) *Reproduction of Marine Invertebrates VI Echinoderms and Lophophorates*. Boxwood Press, Pacific Grove, California, pp 47-84

- Lüter C (2000) The origin of the coelom in Brachiopoda and its phylogenetic significance. *Zoomorphology* 120:15-28
- Marcus E (1926) Beobachtungen und Versuche an lebenden Meeresbryozoen. *Zool Jb* 52:1-102
- Marcus E (1934) Über *Lophopus cristallinus* (Pall.). *Zool Jb Anat Ontog Tiere* 58:501-606
- Mawatari S, Mawatari SF (1975) Development and metamorphosis of the Cyphonautes of *Membranipora serrilamella* Osburn. In: Pouyet S (eds) *Bryozoa 1974*. Université Claude Bernard, Lyon, pp 13-18, 2pl
- Morgan TH (1891) The growth and metamorphosis of tornaria. *J Morphol* 5:407-458
- Nielsen C (1970) On metamorphosis and ancestrula formation in cylostomatous bryozoans. *Ophelia* 7:217-256
- Nielsen C (1971) Entoproct life-cycles and the entoproct/ectoproct relationship. *Ophelia* 9:209-341
- Nielsen C (1990) Bryozoa Ectoprocta. In: Adiyodi KG, Adiyodi RG (eds) *Reproductive Biology of Invertebrates Vol. IV, Part B Fertilization Development and Parental Care*. John Wiley & Sons, 185-200
- Nielsen C (1991) The development of the brachiopod *Crania (Neocrania) anomala*. *Acta Zool* 27:7-28
- Nielsen C (2001) *Animal evolution. Interrelationships of the living phyla*. Oxford University Press,
- Nielsen C (2004) Trochophora larvae: Cell-lineages, ciliary bands, and body regions. 1. Annelida and Mollusca. *J Exp Zool B* 302:35-68
- Nielsen C (2005) Trochophora larvae: Cell-lineages, ciliary bands, and body regions. 2. Other groups and general discussion. *J Exp Zool B* 304:401-447
- Pace RM (1906) On the early stages in the development of *Flustrella hispida* (Fabricius), and on the existence of a -yolk nucleus- in the egg of this form. *Q J Microsc Sci* 50:435-478 + 4 pls.
- Passamanek YJ, Halanych KM (2004) Evidence from Hox genes that bryozoans are lophotrochozoans. *Evol Dev* 6:275-281
- Passamanek YJ, Halanych KM (2006) Lophotrochozoan phylogeny assessed with LSU and SSU data: Evidence of lophophorate polyphyly. *Mol Phylogenet Evol* 40:20-28
- Peterson KJ, Cameron RA, Tagawa K, Satoh N, Davidson EH (1999) A comparative molecular approach to mesodermal patterning in basal deuterostomes: the expression pattern of Brachyury in the enteropneust hemichordate *Ptychodera flava*. *Development* 126:85-95
- Prouho H (1892) Contribution a l'histoire des bryozoaires. *Arch Zool Exp Gén* 10 (2.Ser.):557-656
- Reed CG (1987) Phylum Bryozoa. In: Strathmann MF (eds) *Reproduction and development of marine invertebrates of the Northern Pacific coast*. University of Washington Press, Seattle, London, pp 494-511

- Reed CG (1991) Bryozoa. In: Giese AC, Pearse JS, Pearse VB (eds) *Reproduction of Marine Invertebrates VI Echinoderms and Lophophorates*. Boxwood Press, Pacific Grove, California, pp 85-245
- Reed CG, Cloney RA (1982) The larval morphology of the marine bryozoan *Bowerbankia gracilis* (Ctenostomata: Vesicularioidea). *Zoomorphology* 100:23-54
- Reed CG, Woollacott RM (1982) Mechanisms of rapid morphogenetic movements in the metamorphosis of the bryozoan *Bugula neritina* (Cheilostomata, Cellularioidea) I. Attachment to the substratum. *J Morphol* 172:335-348
- Rieger MR, Ladurner P (2003) The significance of muscle cells for the origin of mesoderm in Bilateria. *Integ Comp Biol* 43:47-54
- Robertson A (1903) Embryology and embryonic fission in the genus *Crisia*. *Univ Calif Publ Zool* 1:115-156
- Ruppert EE, Balser EJ (1986) Nephridia in the Larvae of Hemichordates and Echinoderms. *Biol Bull* 171:188-196
- Santagata S (2004) Larval Development of *Phoronis pallida* (Phoronida): Implications for Morphological Convergence and Divergence Among Larval Body Plans. *J Morphol* 259:347-358
- Shook D, Keller R (2003) Mechanisms, mechanics and function of epithelial-mesenchymal transitions in early development. *Mechanisms of Development* 120:1351-1383
- Silén L (1966) On the fertilization problem in the gymnolaematous bryozoa. *Ophelia* 3:113-140
- Stricker SA, Reed CG, Zimmer RL (1988) The cyphonautes larva of the marine bryozoan *Membranipora membranacea*. I. General morphology, body wall, and gut. *Can J Zool* 66:368-383
- Ström R (1969) Sexual reproduction in a stoloniferous bryozoan, *Triticella koreni* (G.O. Sars). *Zoologiska bidrag från Uppsala* 38:113-127
- Ström R (1977) Brooding patterns of bryozoans. In: Woollacott RM, Zimmer RL (eds) *Biology of bryozoans*. Academic Press, New York, pp 23-55
- Tagawa K, Nishino A, Humphreys T, Satoh N (1998) The spawning and early development of the Hawaiian Acorn Worm (Hemichordate), *Ptychodera flava*. *Zoological Science* 15:85-91
- Technau U, Scholz CB (2003) Origin and evolution of endoderm and mesoderm. *International Journal of Developmental Biology* 47:531-539
- Temkin MH (1996) Comparative fertilization biology of gymnolaemate bryozoans. *Mar Biol* 127:329-339
- Vigelius WJ (1886) Zur Ontogenie der marinen Bryozoen. *Mitteilungen aus der zoologischen Station zu Neapel* 6:499-541
- Waeschenbach A, Telford MJ, Porter JS, Littlewood DTJ (2006) The complete mitochondrial genome of *Flustrellidra hispida* and the phylogenetic position of Bryozoa among the Metazoa. *Mol Phylogenet Evol* 40:195-207
- Woollacott RM, Zimmer RL (1971) Attachment and metamorphosis of the cheilo-ctenostome bryozoan *Bugula neritina* (Linné). *J Morphol* 134:351-382

- Wray GA (1997) Echinoderms. In: Gilbert SF, Raunio AM (eds) *Embryology: Constructing the organism*. Sinauer Associates, Sunderland, Mass., pp 309-329
- Zimmer RL (1964) *Reproductive biology and development of Phoronida*. University of Washington
- Zimmer RL (1980) Mesoderm proliferation and formation of the protocoel and metacoel in early embryos of *Phoronis vancouverensis*. *Zool Jb Anat Ontog Tiere* 103:219-233
- Zimmer RL (1997) Phoronids, brachiopods, and bryozoans, the lophophorates. In: Gilbert SF, Raunio AM (eds) *Embryology: Constructing the organism*. Sinauer Associates, Sunderland, Mass., pp 279-305
- Zimmer RL, Woollacott RM (1977) Structure and classification of gymnolaemate larvae. In: Woollacott RM, Zimmer RL (eds) *Biology of bryozoans*. Academic Press, New York, pp 57-89
- Zimmer RL, Woollacott RM (1989) Larval morphology of the bryozoan *Watersipora arcuata* (Cheilostomata: Ascophora). *J Morphol* 199:125-150
- Zimmer RL, Woollacott RM (1993) Anatomy of the larva of *Amathia vidovici* (Bryozoa: Ctenostomata) and phylogenetic significance of vesiculariform larva. *J Morphol* 215:1-29