

Appendix B

RIS of SPOC

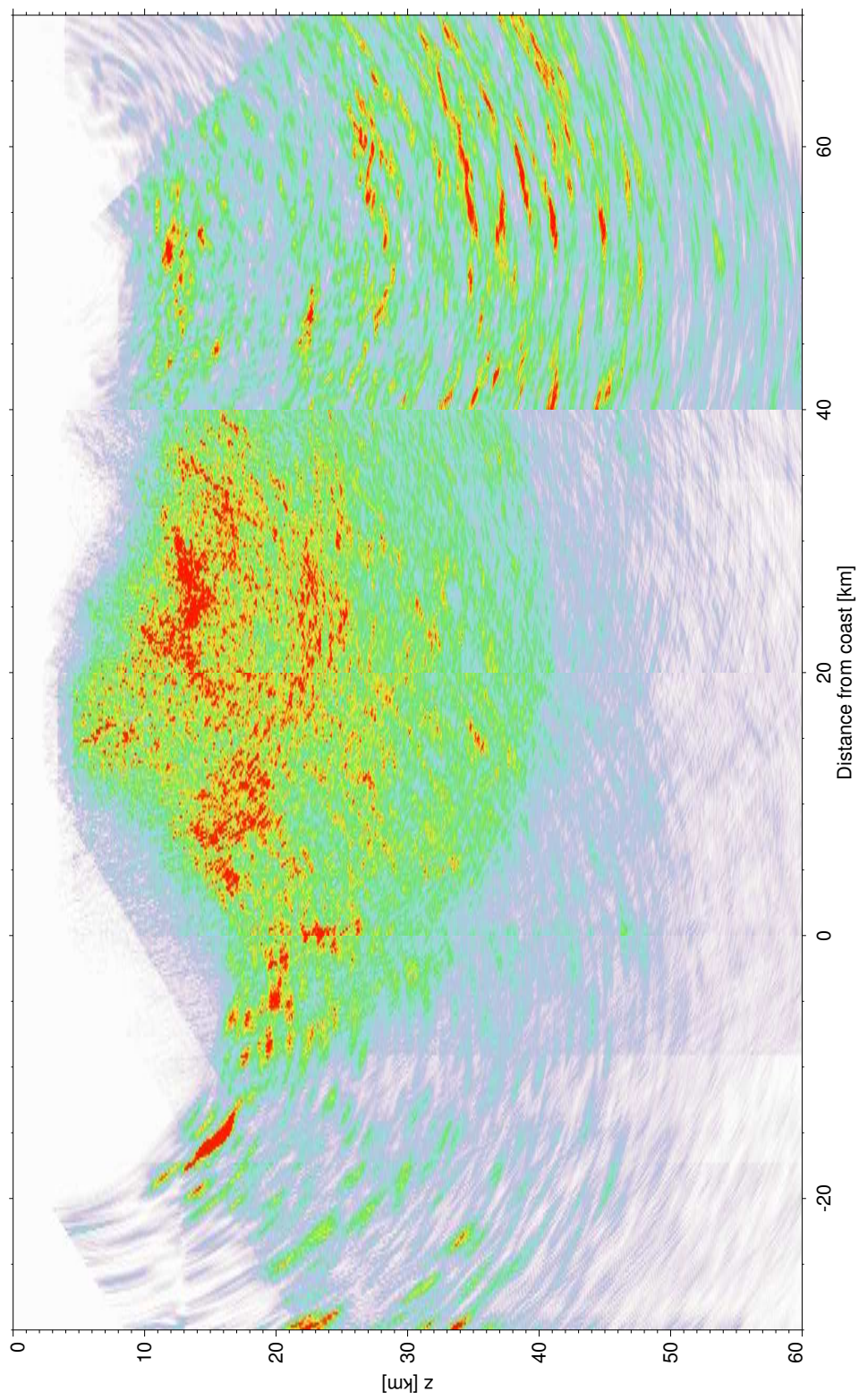


Figure B.1: Unfiltered section (envelope stack)

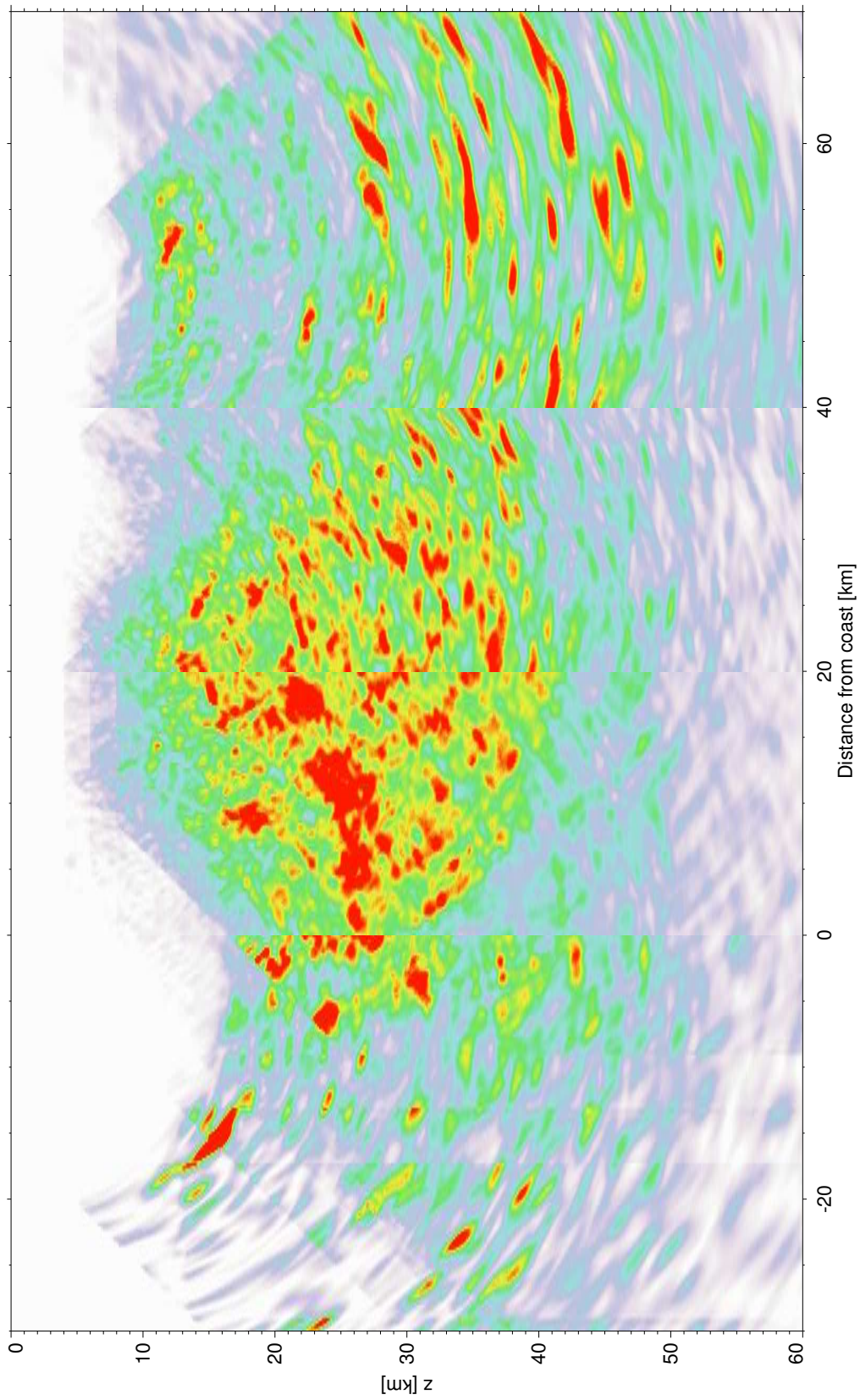


Figure B.2: Low-frequency (5-10 Hz) image (envelope stack)

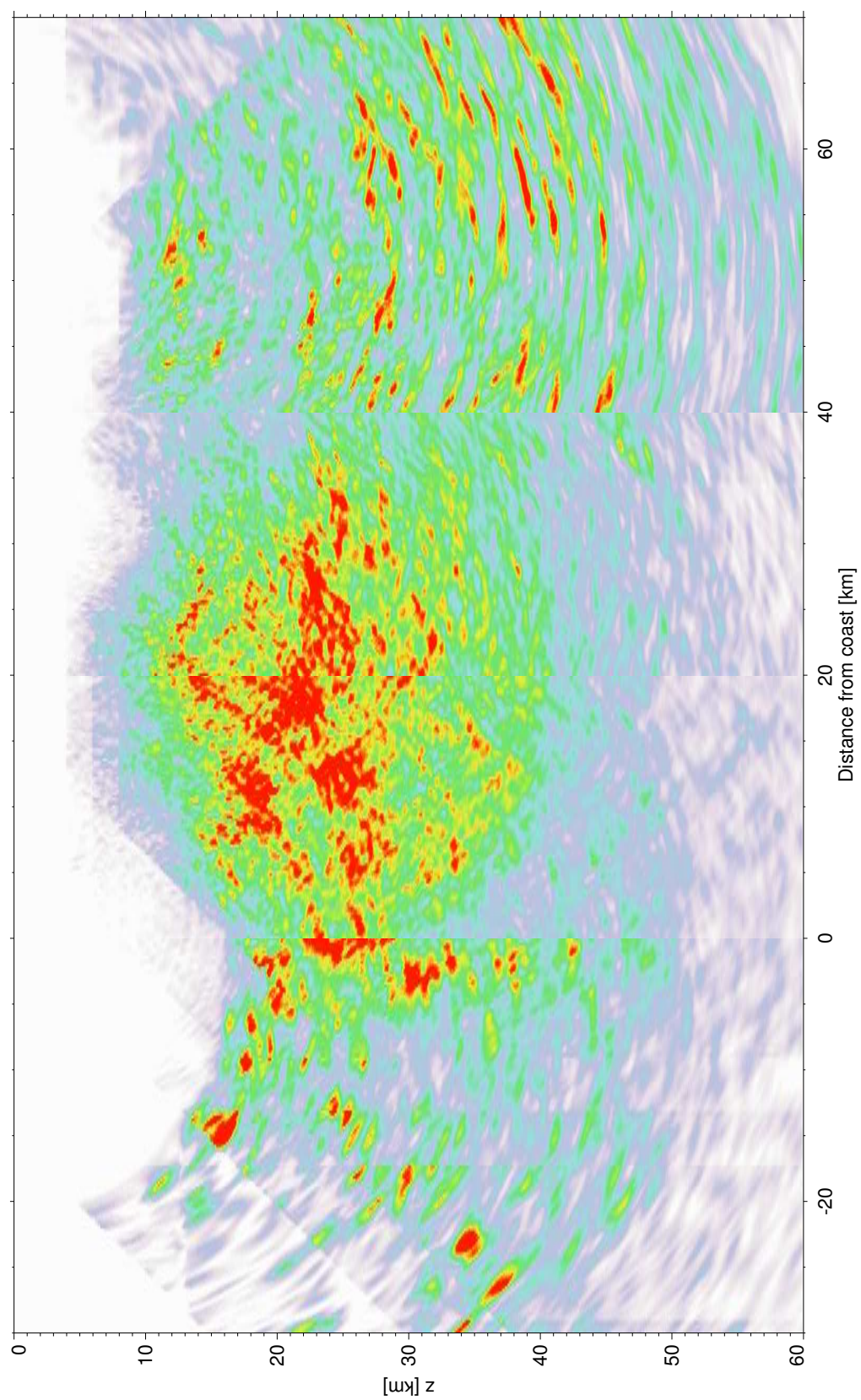


Figure B.3: Intermediate-frequency (10 - 15 Hz) image (envelope stack)

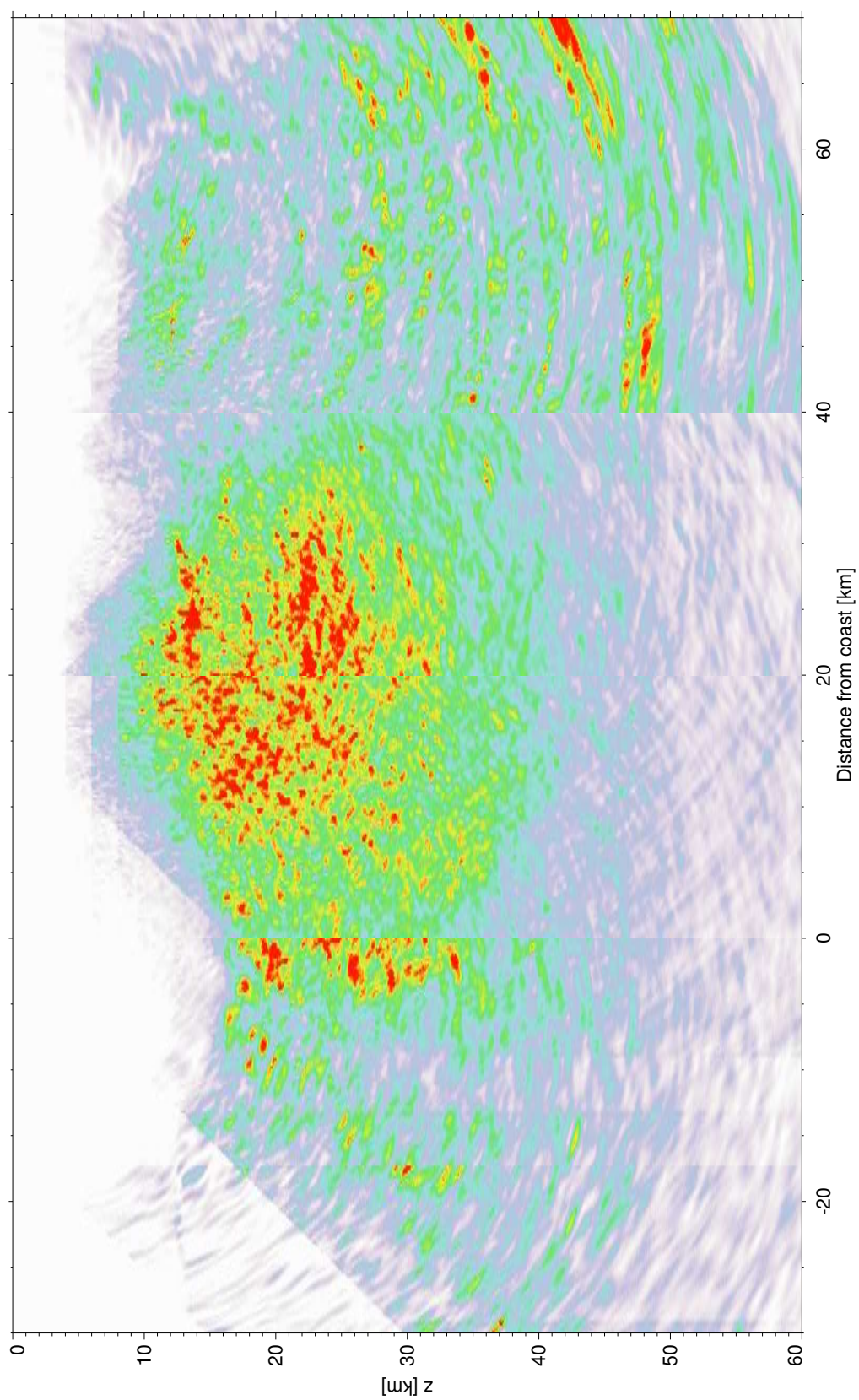


Figure B.4: High-frequency (15 - 20 Hz) image (envelope stack)

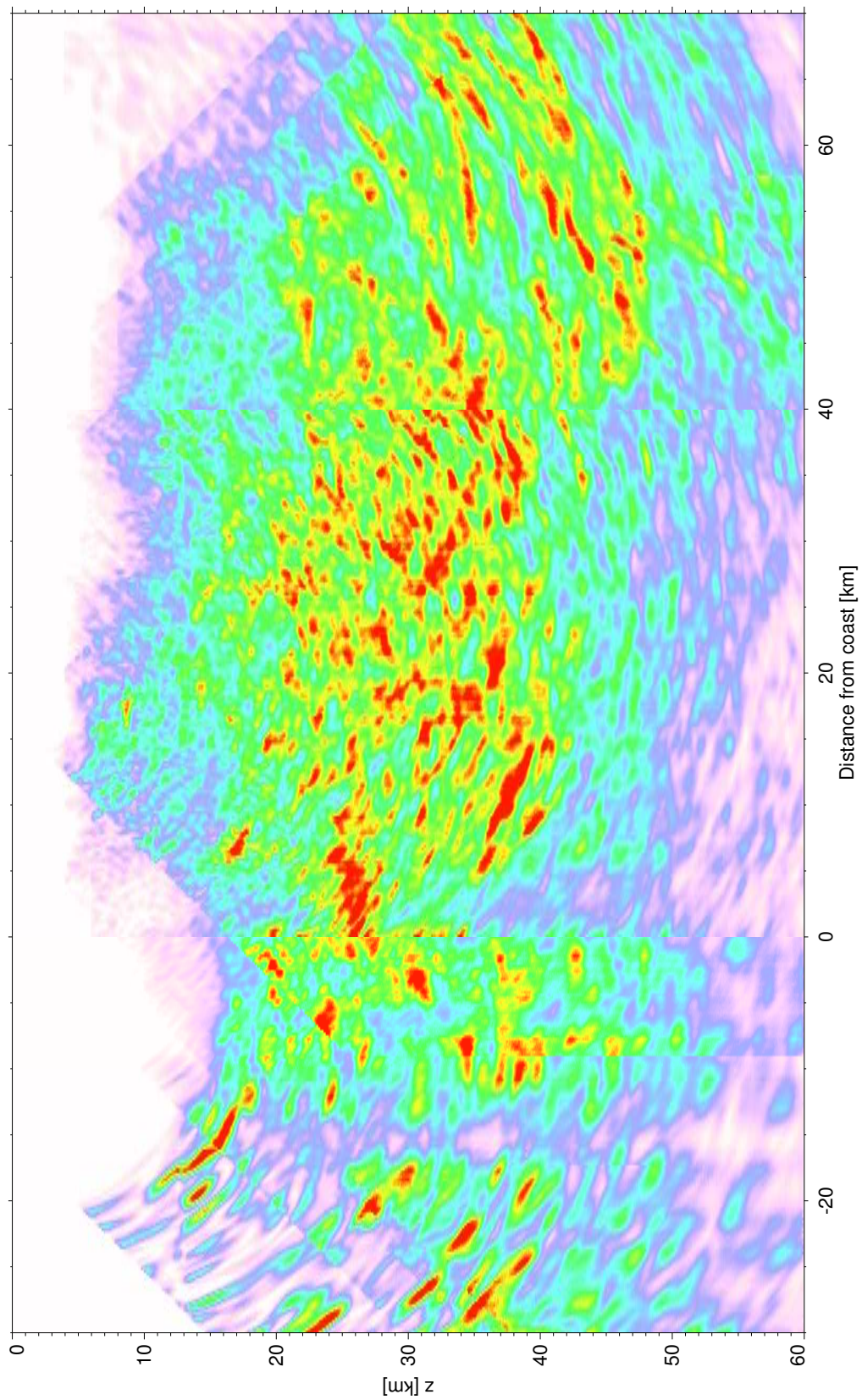


Figure B.5: Low-frequency (5 - 10 Hz) image (obtained by envelope stacking and normalisation to maximum trace amplitudes).

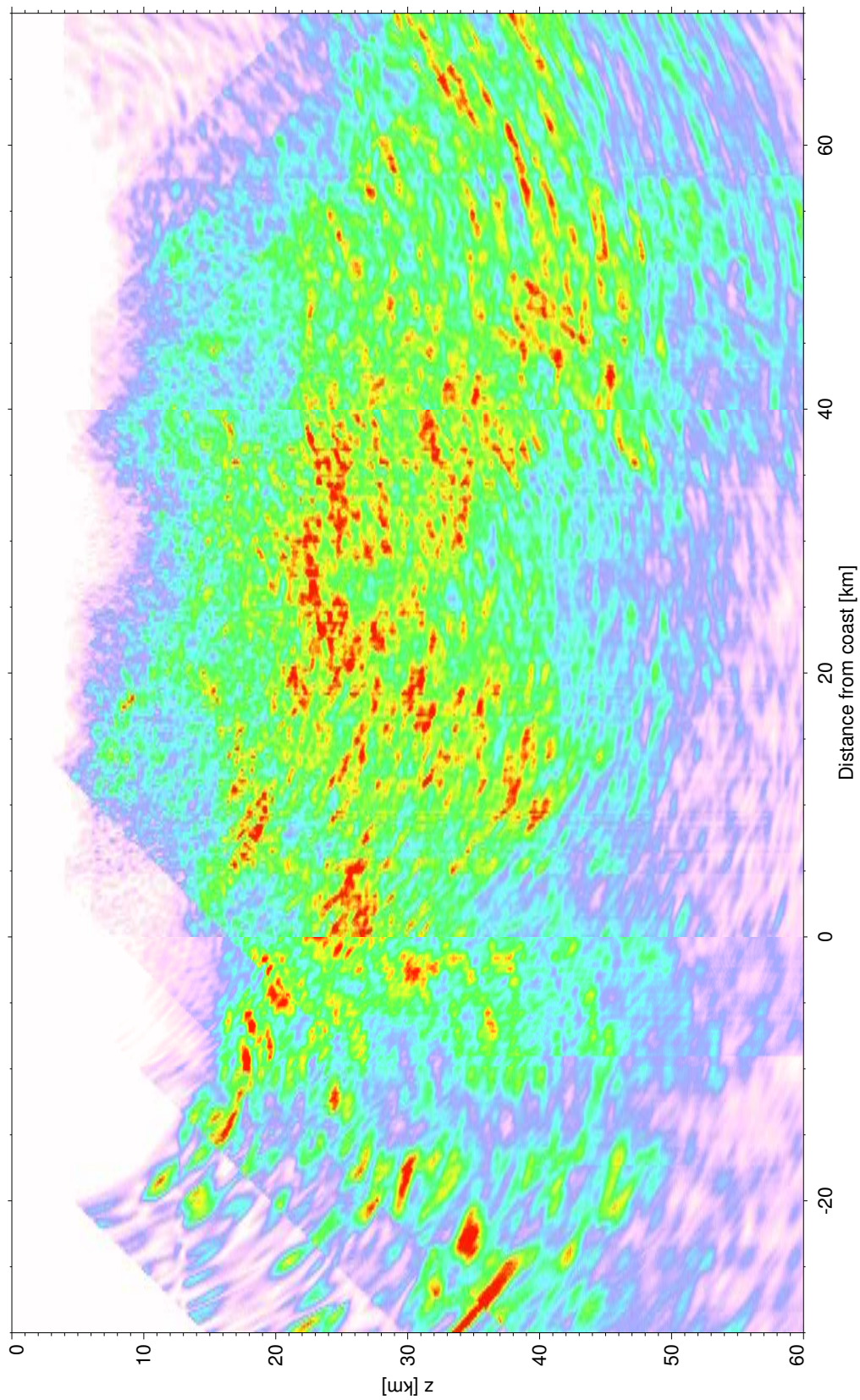


Figure B.6: Intermediate-frequency (10 - 15 Hz) image (obtained by envelope stacking and normalisation to maximum trace amplitudes).

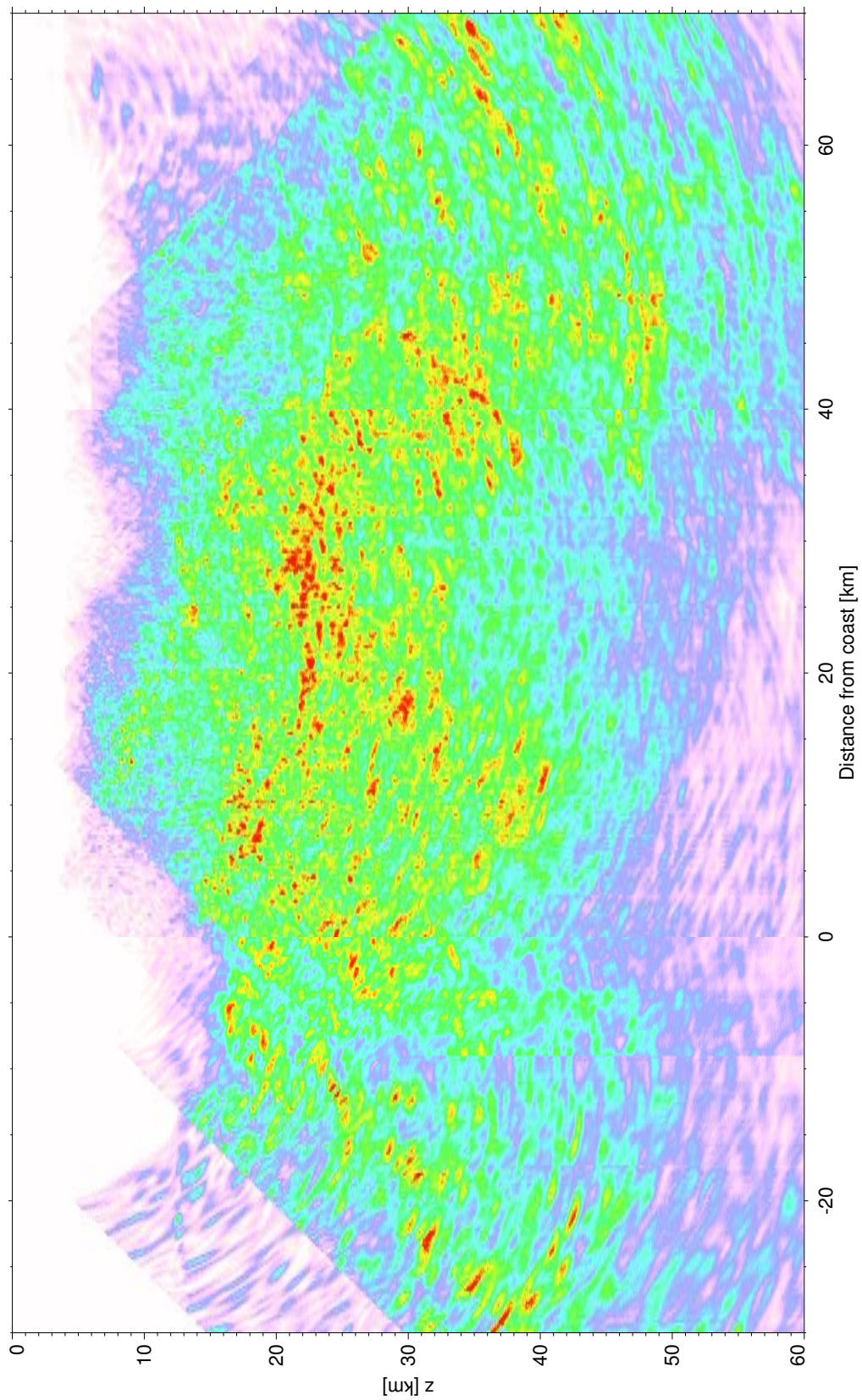


Figure B.7: High-frequency (15 - 20 Hz) image (obtained by envelope stacking and normalisation to maximum trace amplitudes).

