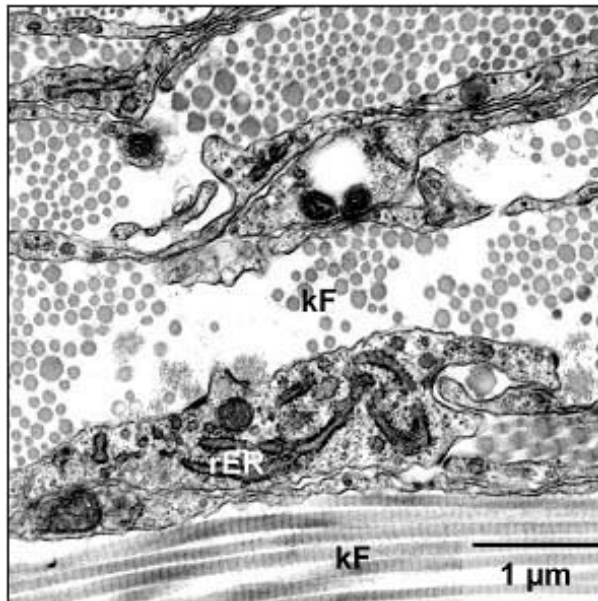


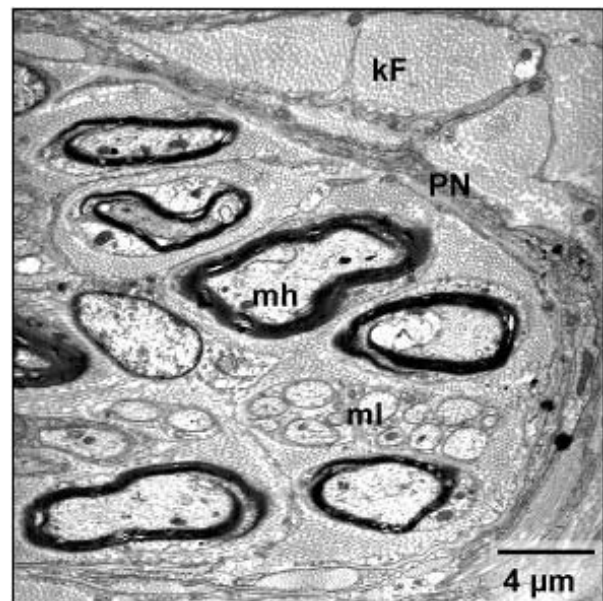
**Abb. 24:** Dura mater encephali (TEM).

N Neurothel, kF kollagene Fibrillen, eF elastische Fasern, Ff Fibrozytenfortsätze



**Abb. 25:** Dura mater (TEM), raues endoplasmatisches Retikulum im Zytoplasma der Fibrozytenfortsätze.

kF kollagene Fibrillen, rER raues endoplasmatisches Retikulum



**Abb. 26:** Dura mater (TEM), gemischter Nerv.

mh markhaltige Fasern, ml marklose Fasern, PN Perineuralepithel, kF kollagene Fibrillen