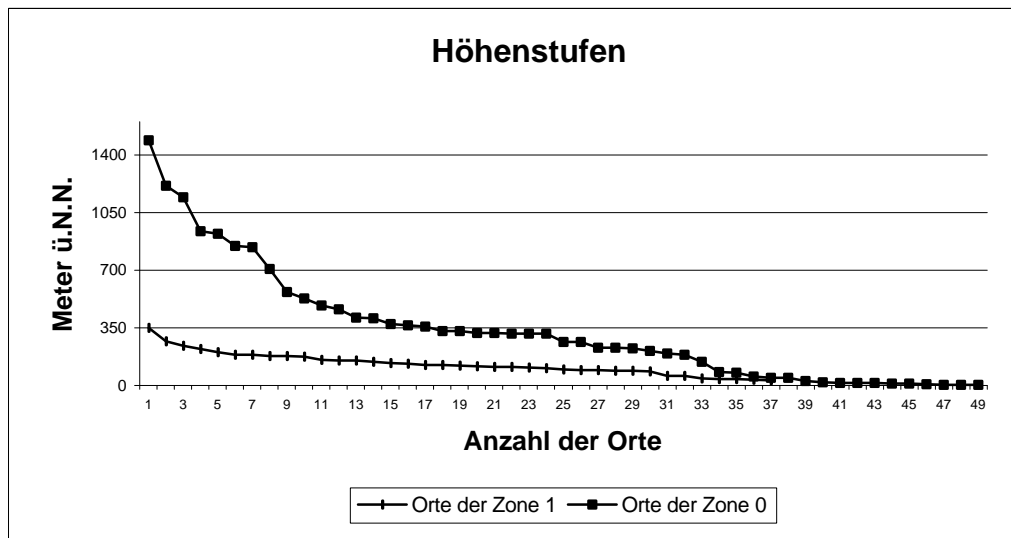


Abb. 5: Höhenlage der Orte der Zonen 1 und 0 im Vergleich



Zone 1 fasst hier die Zonen 1 und 2 aus der Übersichtskarte (Karte 20, Anhang 2) und Zone A der Detailkarte (Karte 24, Anhang 2) zusammen
Zone 0 erfasst die restlichen Gebiete

Abb. 6: Tägliche Maximaltemperaturen im Jahr 2000; Orte der Zone 1 der Übersichtskarte

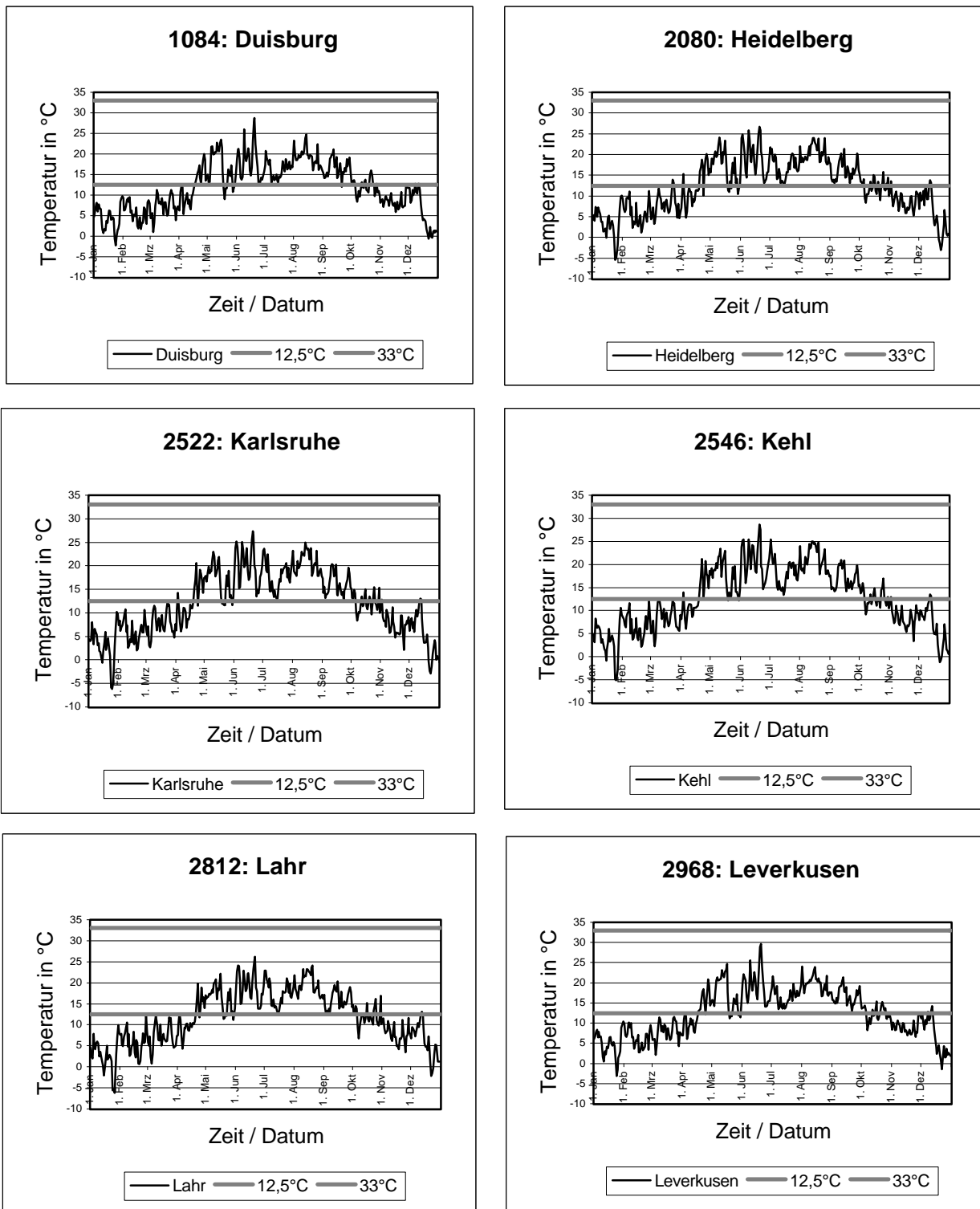


Abbildung 6

Abb. 6: Tägliche Maximaltemperaturen im Jahr 2000; Orte der Zone 1 der Übersichtskarte

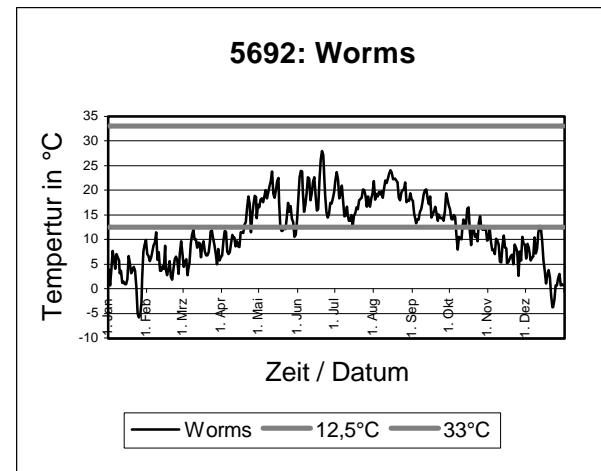
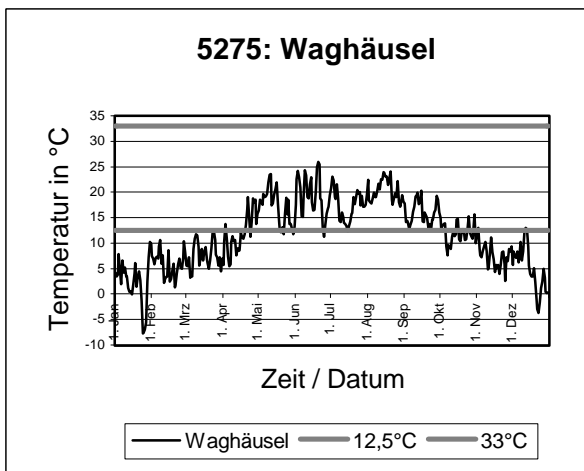
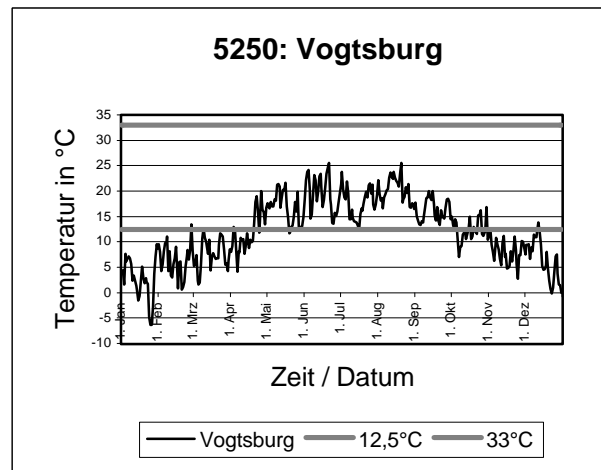
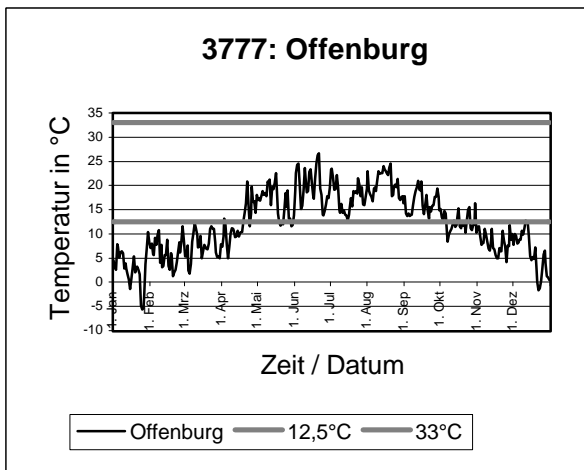


Abb. 7: Tägliche Maximaltemperaturen im Jahr 2000; Orte der Zone A der Detailkarte

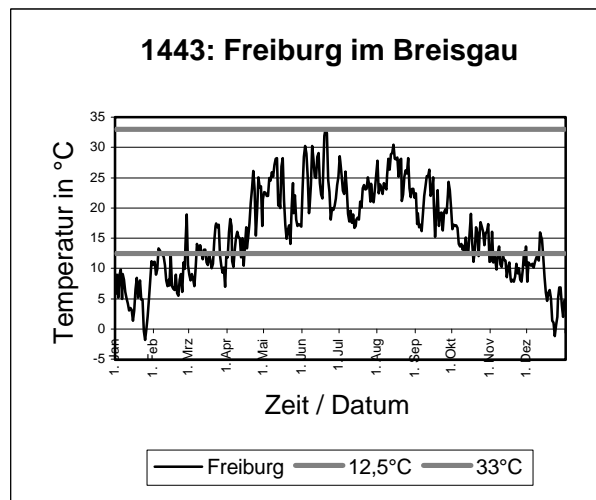
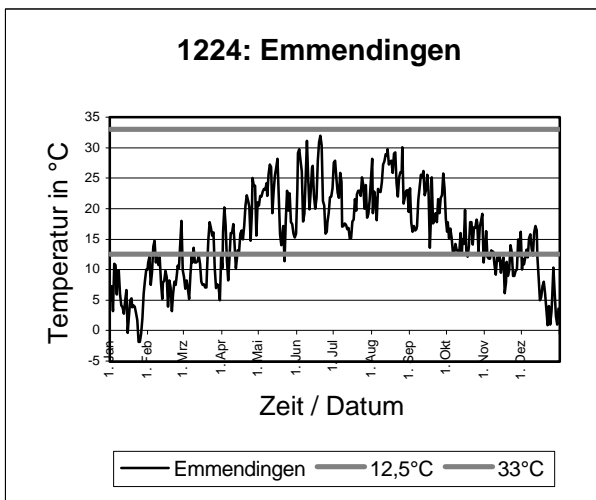
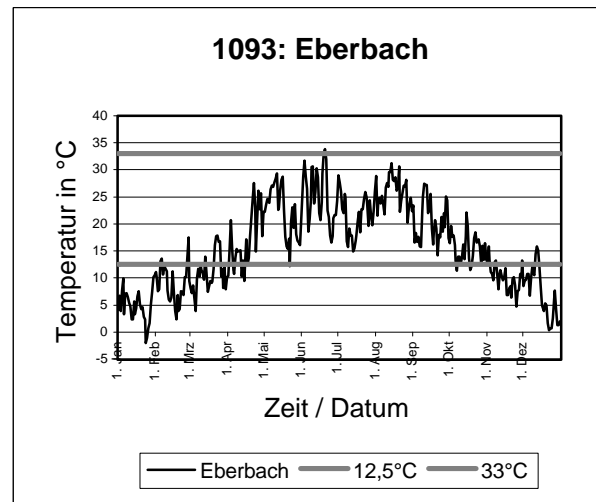
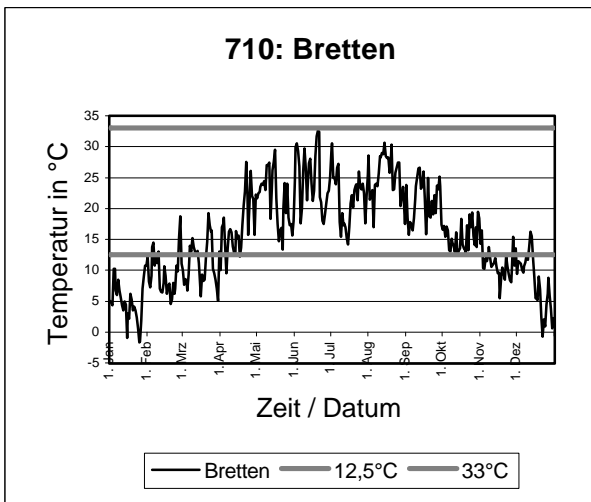
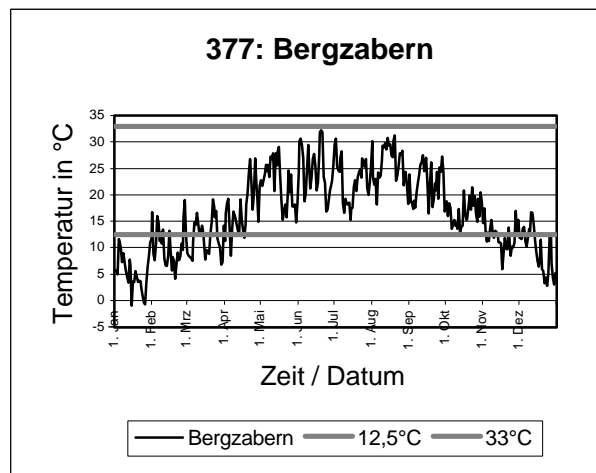
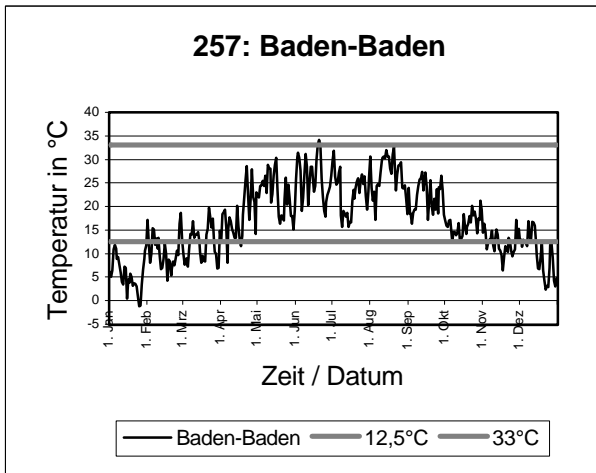


Abbildung 7

Abb. 7: Tägliche Maximaltemperaturen im Jahr 2000; Orte der Zone A der Detailkarte

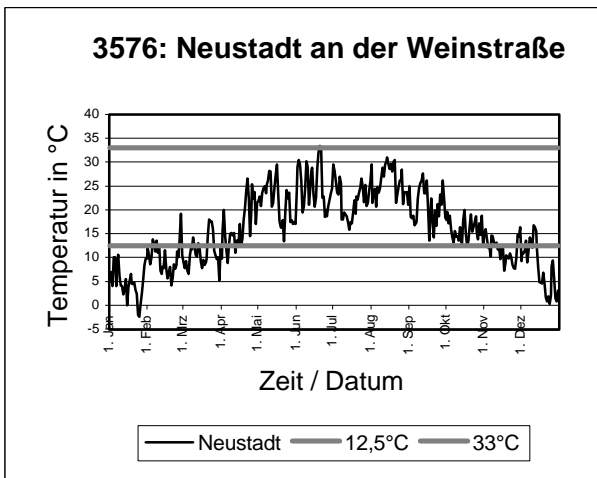
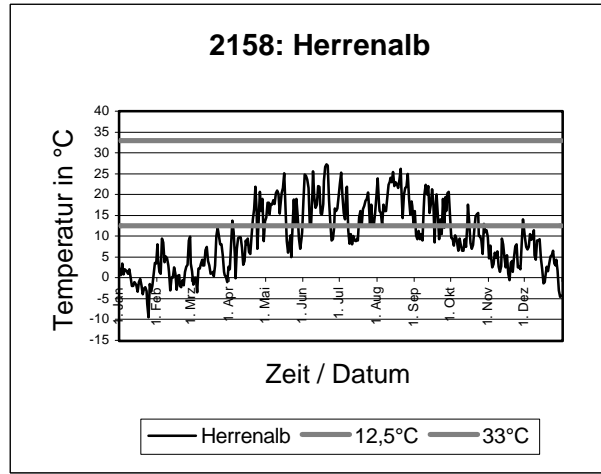
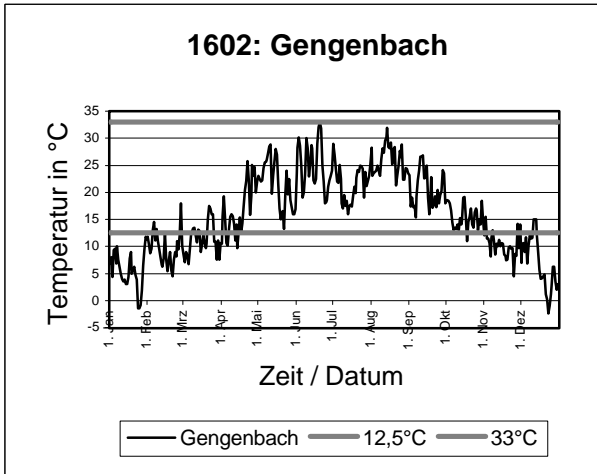


Abb. 8: Windstärken von April bis Oktober 2000

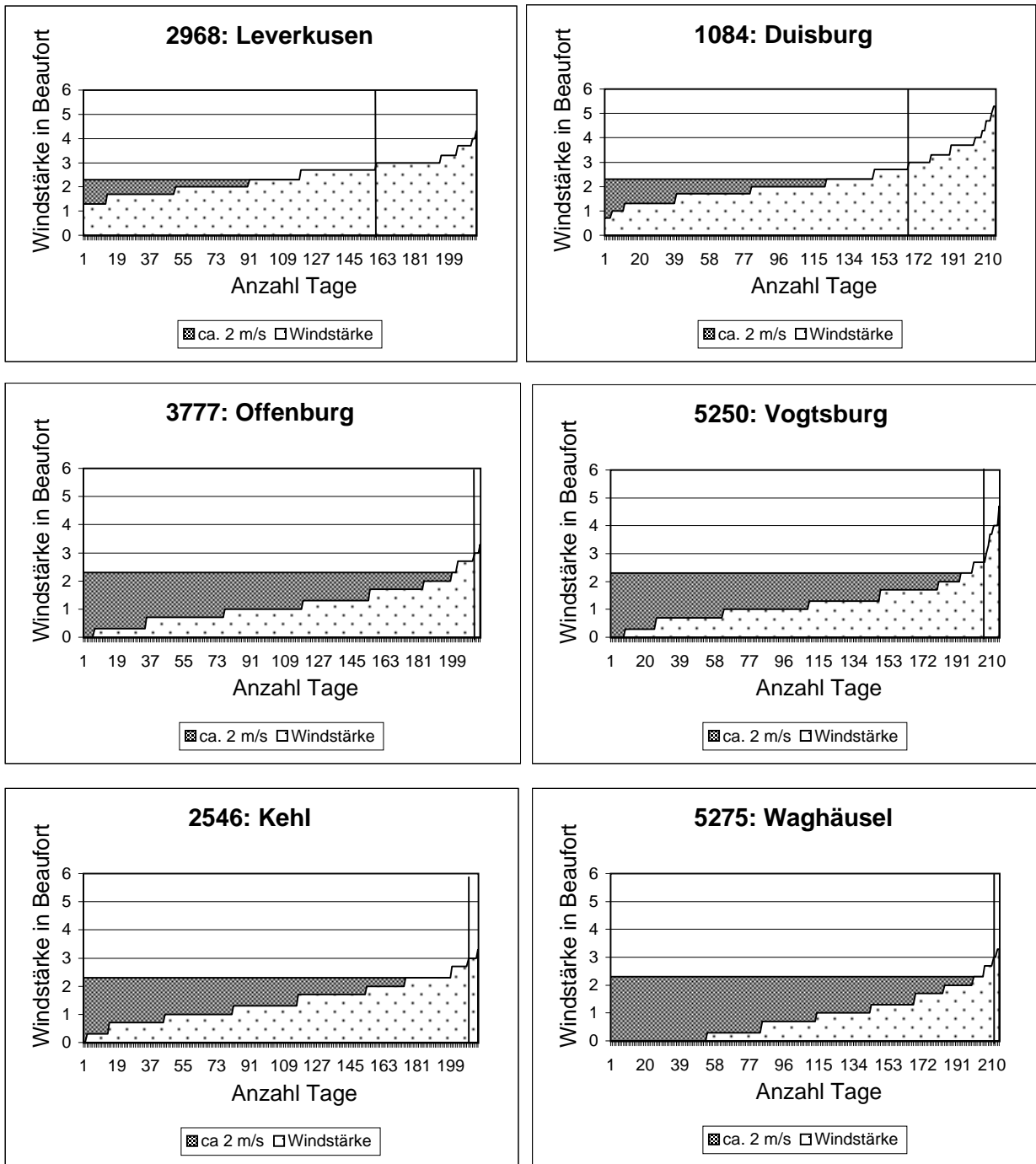


Abbildung 8

Abb. 8: Windstärken von April bis Oktober 2000

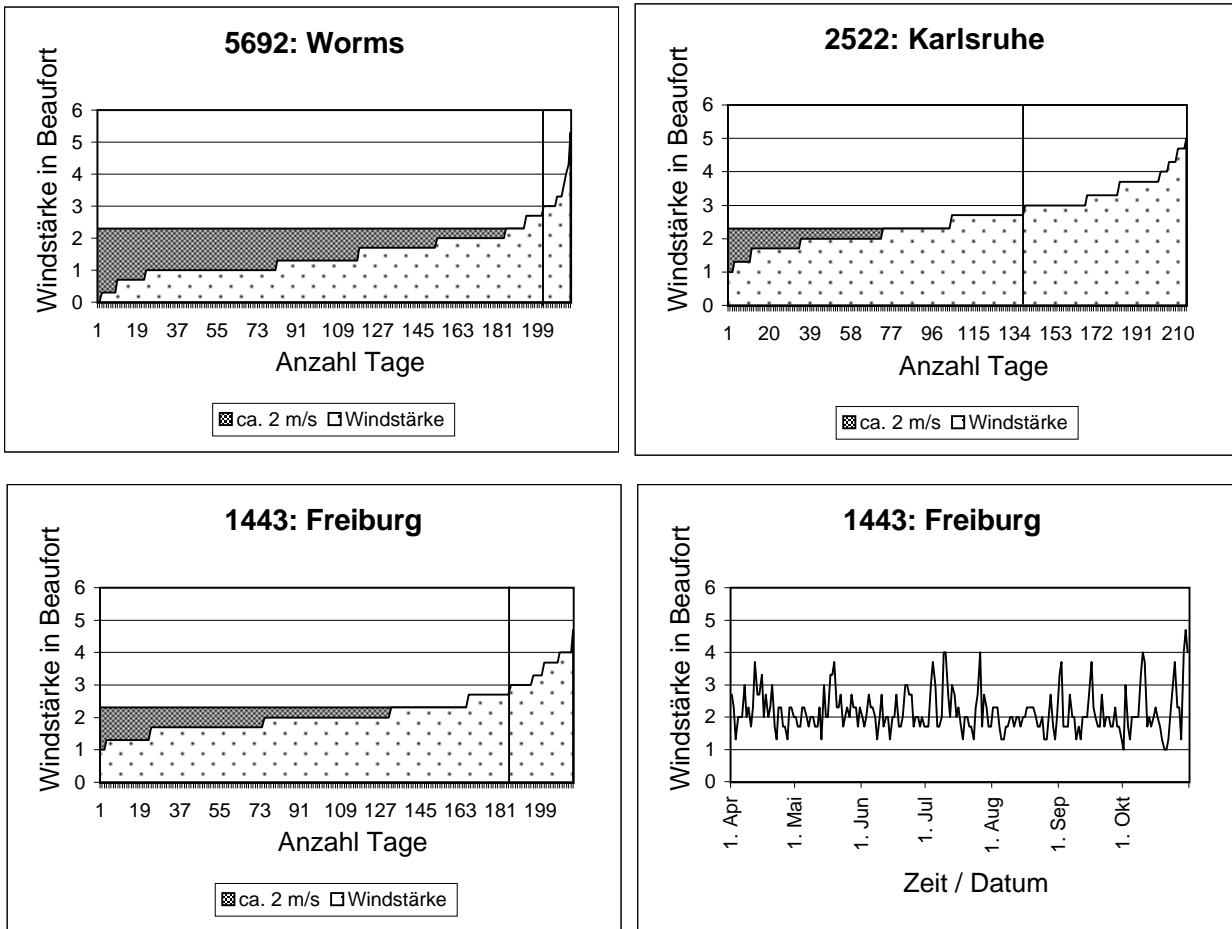


Abbildung 8

Abb. 9: Tägliche Maximaltemperaturen im August 1990

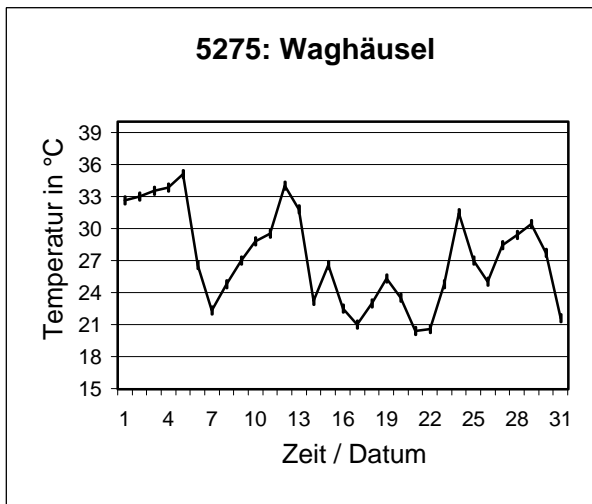
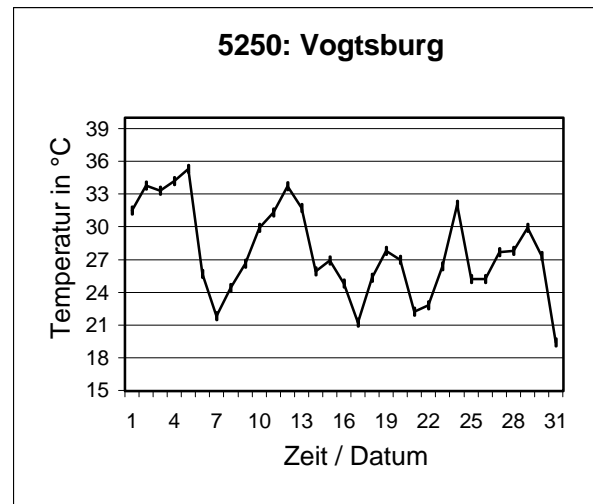
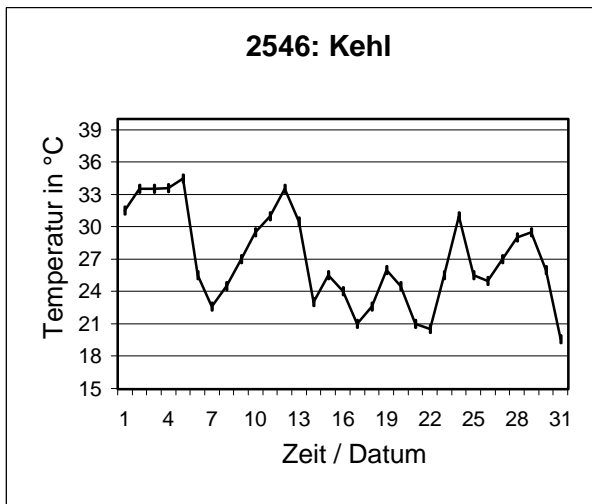
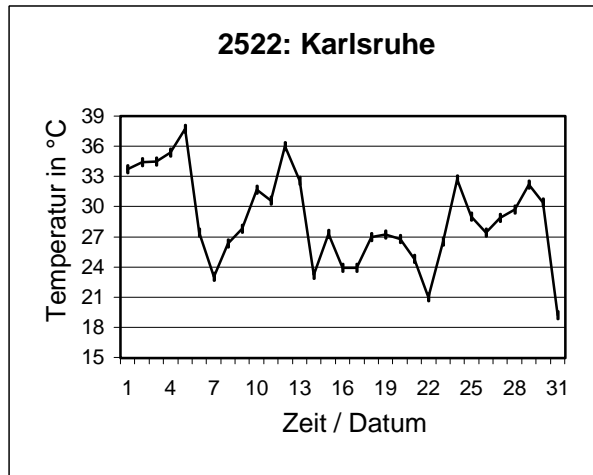
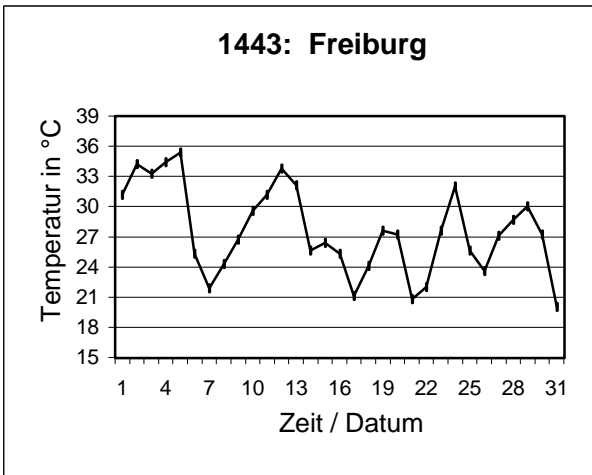


Abbildung 9

Abb. 10: Tägliche Maximaltemperaturen im Juli 1991

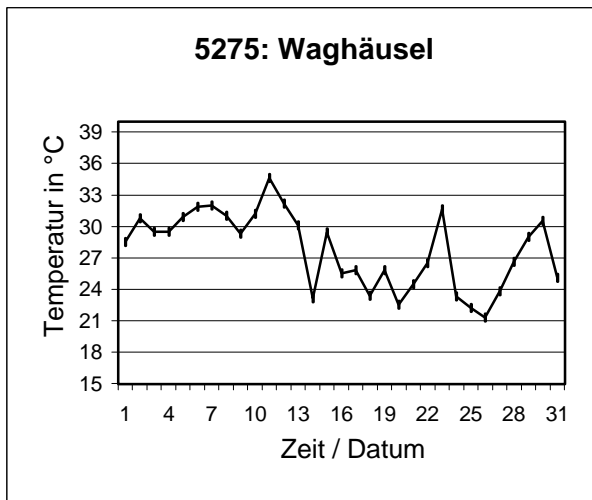
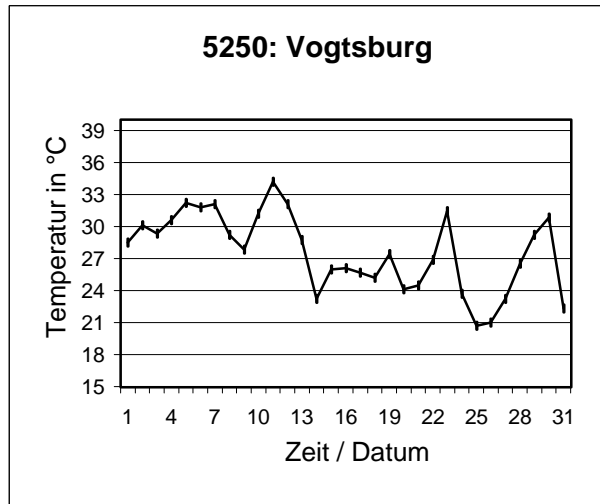
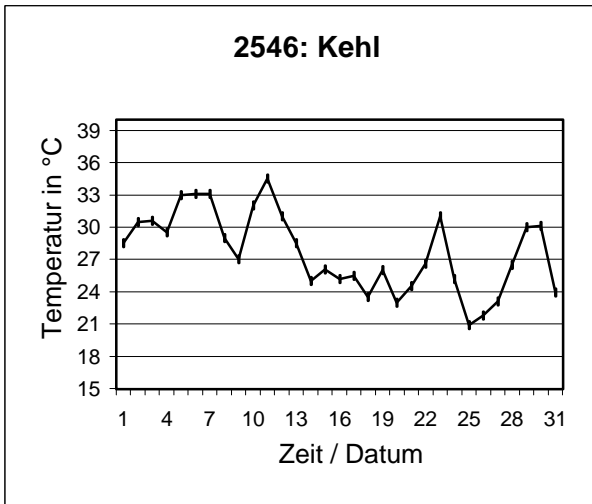
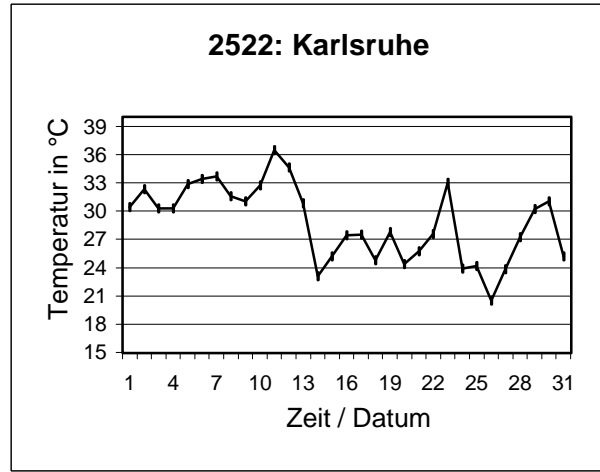
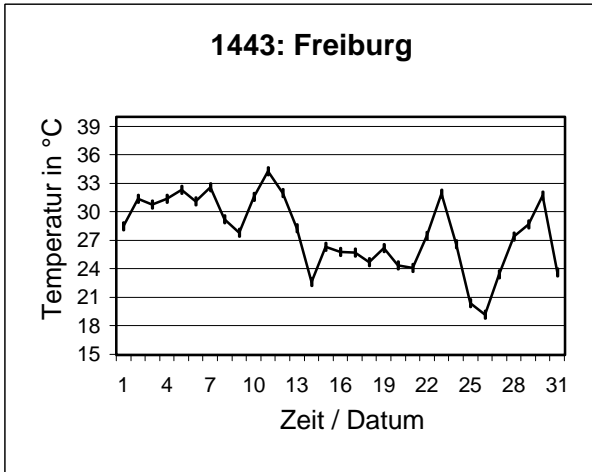


Abb. 11: Tägliche Maximaltemperaturen im August 1991

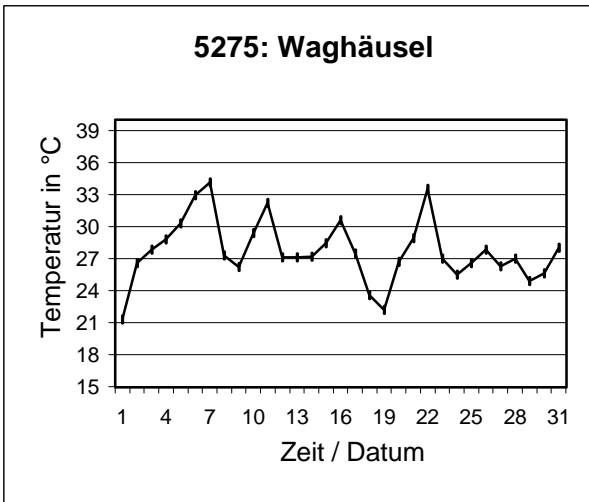
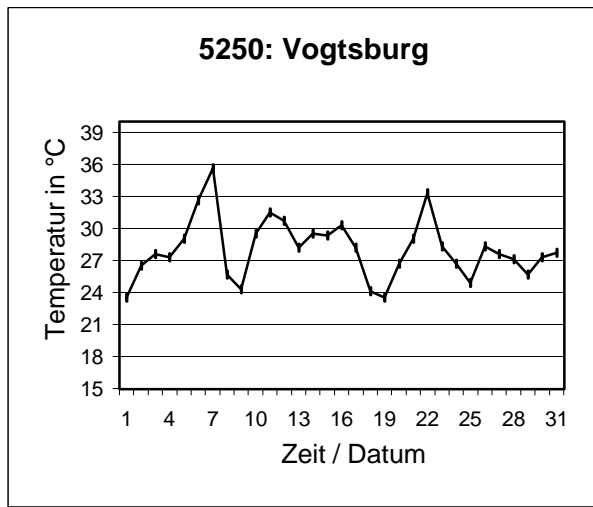
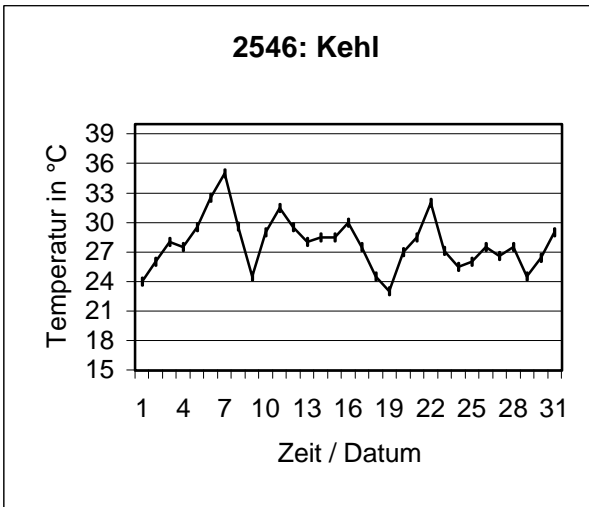
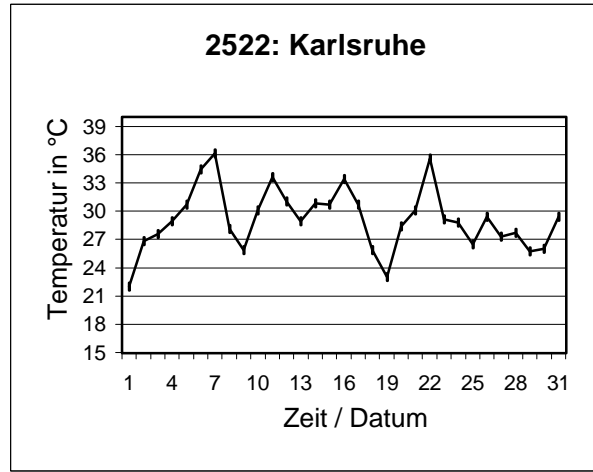
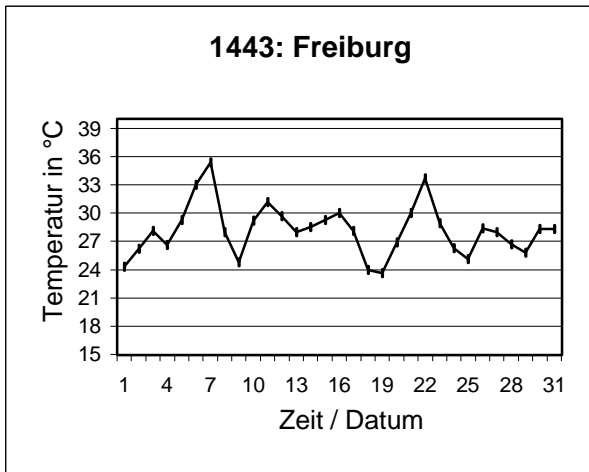


Abbildung 11

Abb. 12: Tägliche Maximaltemperaturen im August 1992

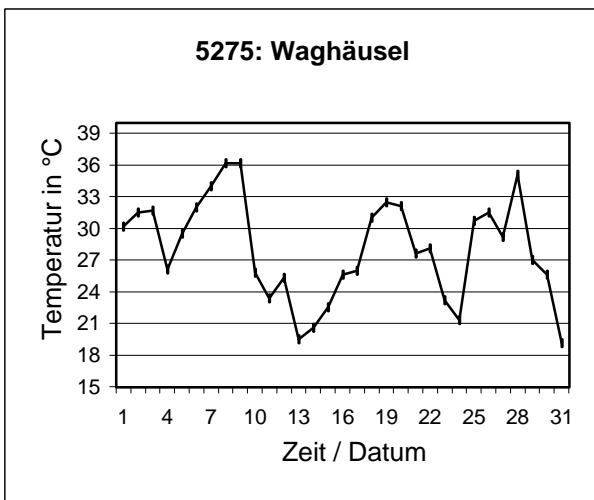
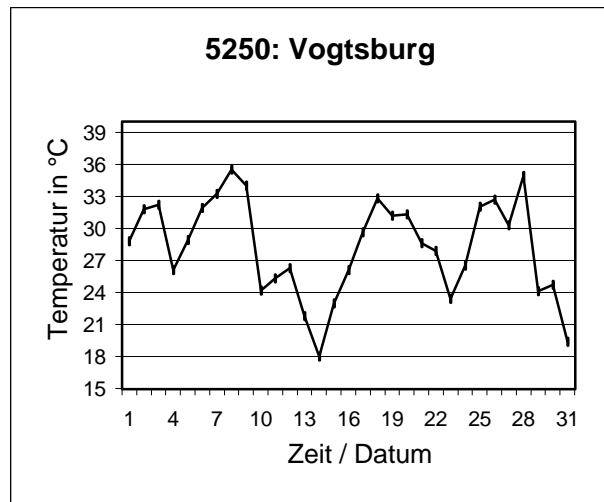
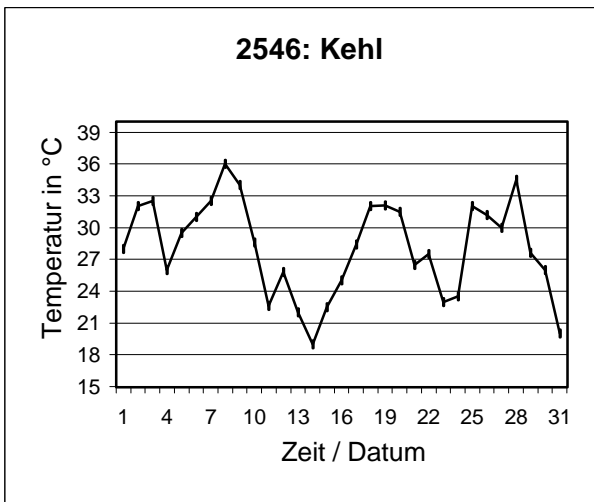
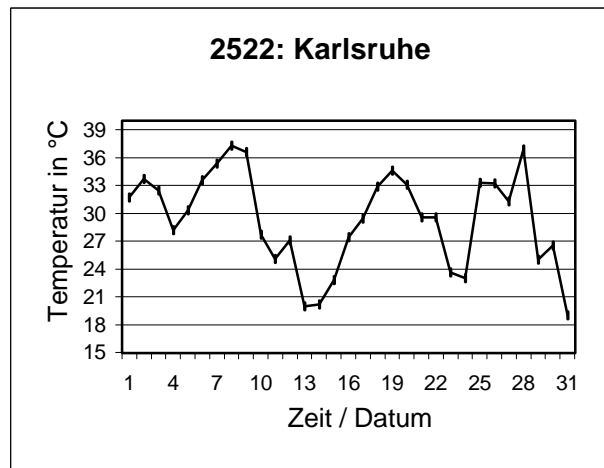
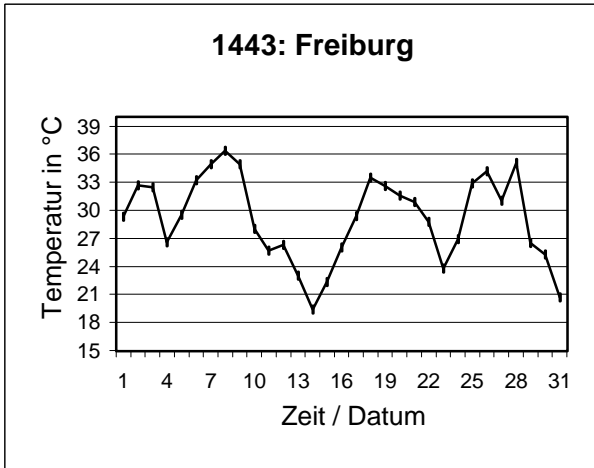


Abbildung 12

Abb. 13: Tägliche Maximaltemperaturen im Juli 1994

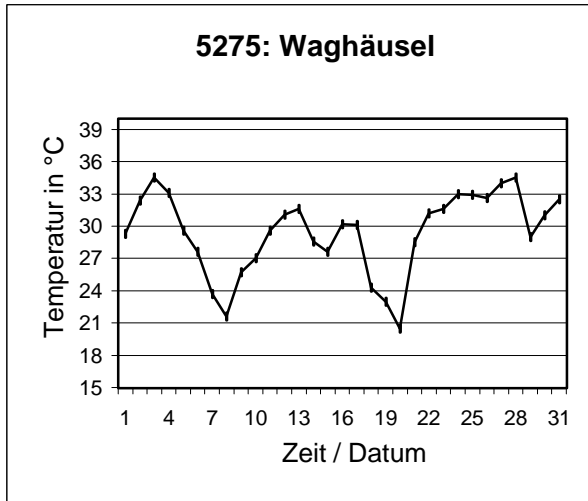
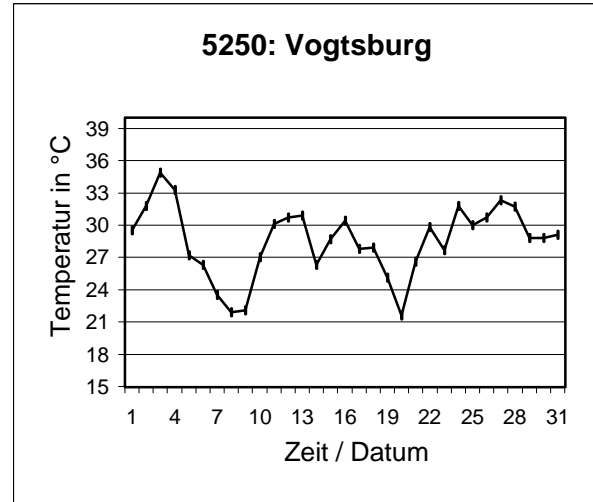
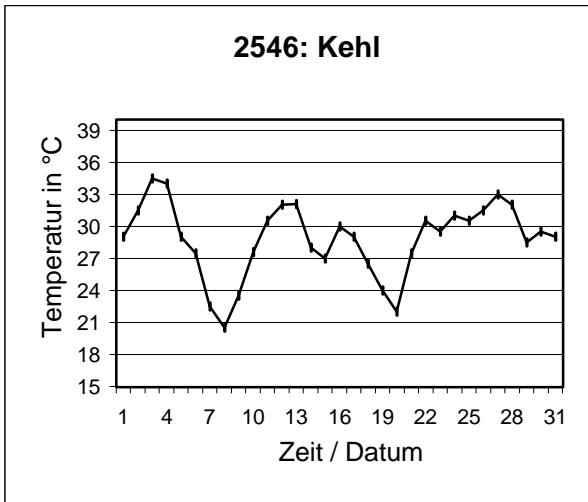
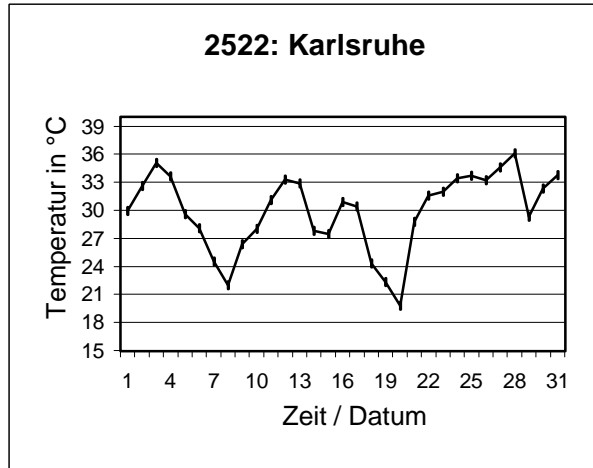
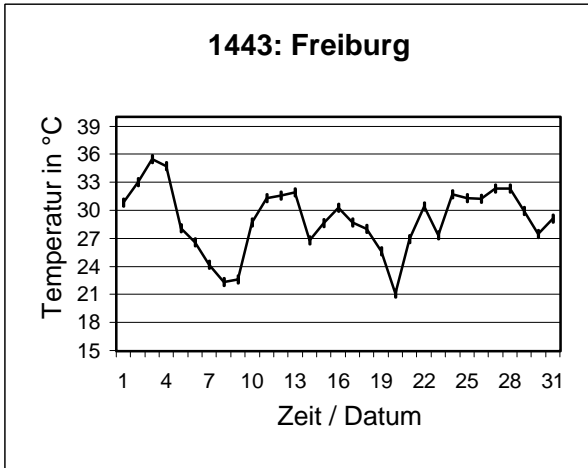


Abb. 14: Tägliche Maximaltemperaturen im Juli 1995

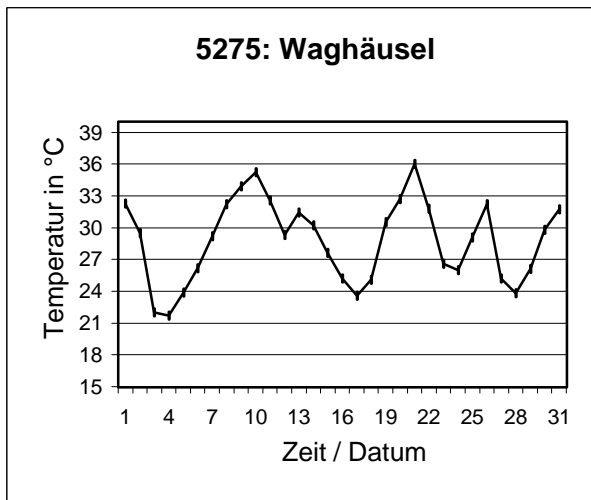
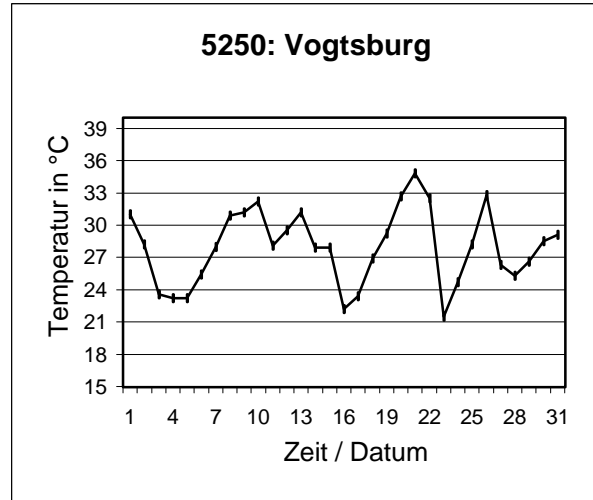
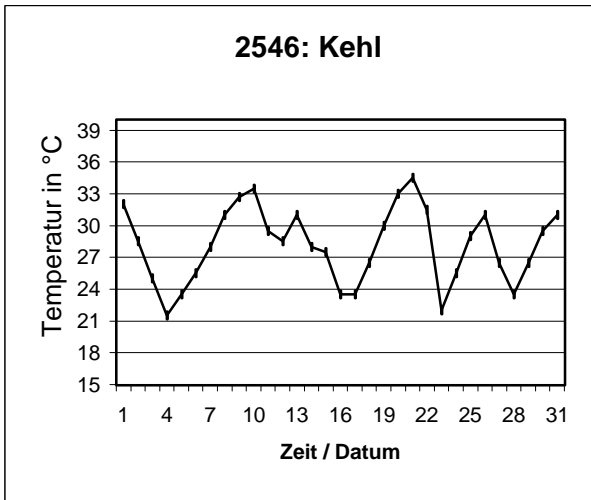
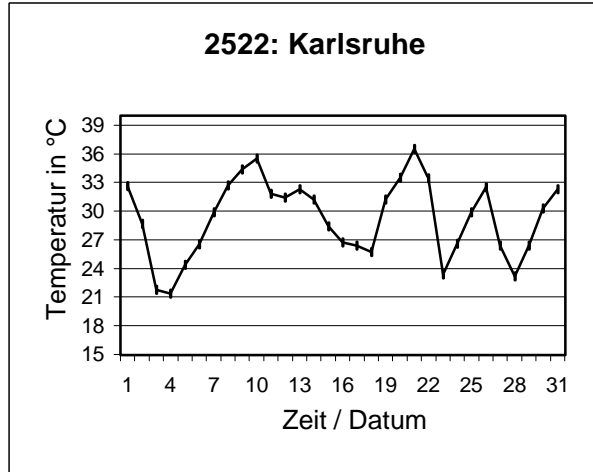
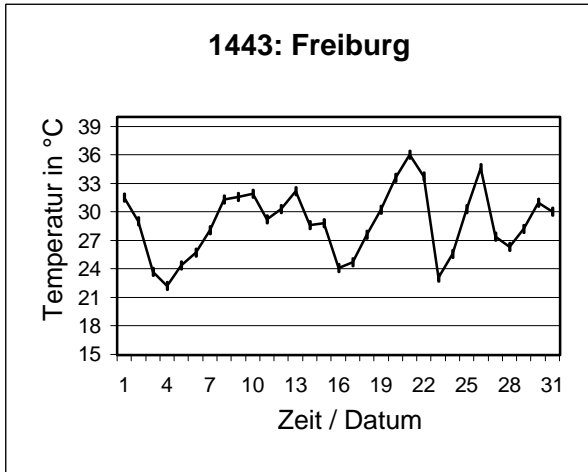


Abbildung 14

Abb. 15: Tägliche Maximaltemperaturen im August 1997

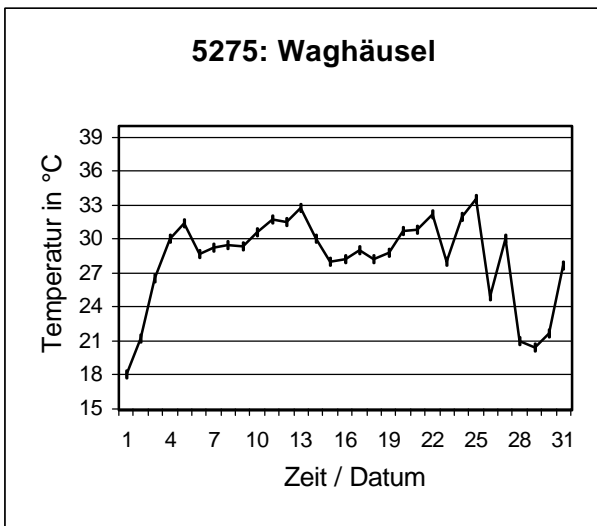
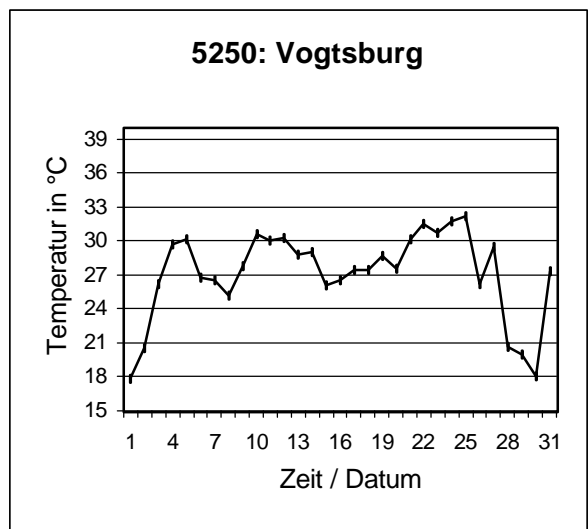
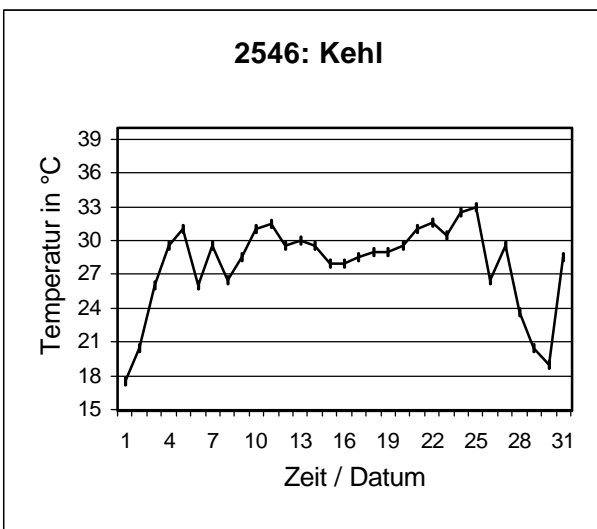
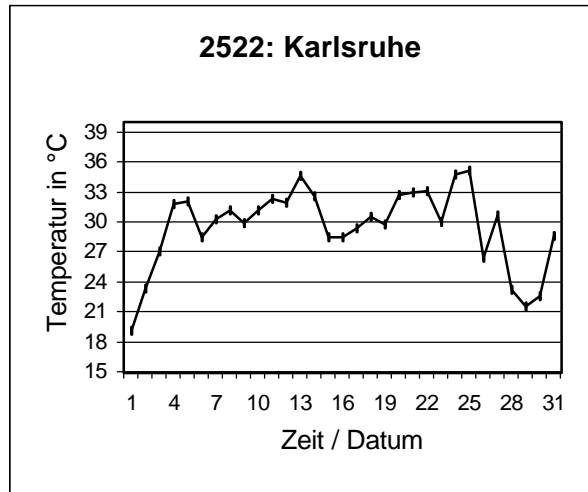
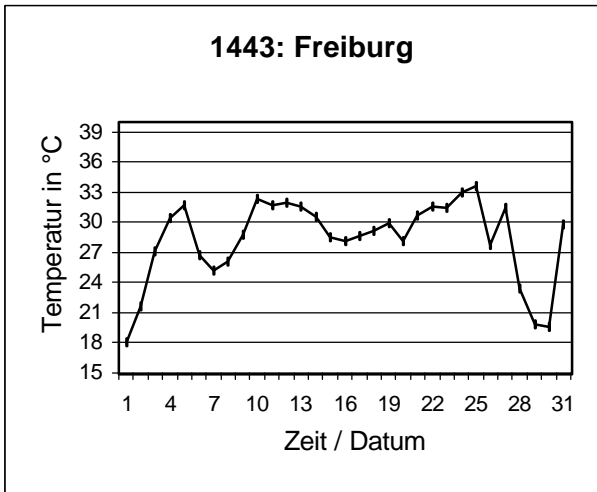


Abb. 16: Tägliche Maximaltemperaturen im Juni 2000

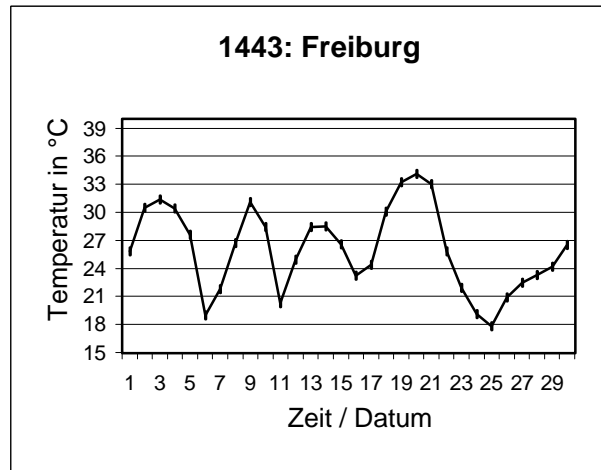
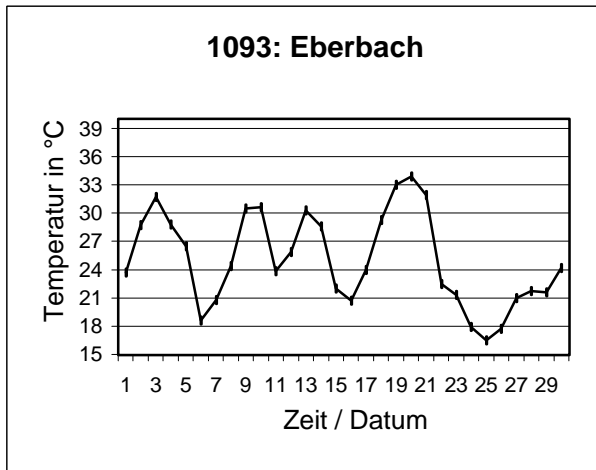


Abb. 17: Simulation einer globalen Erwärmung / Jahr 2000 + 2° C in drei der wärmsten Orte Deutschlands

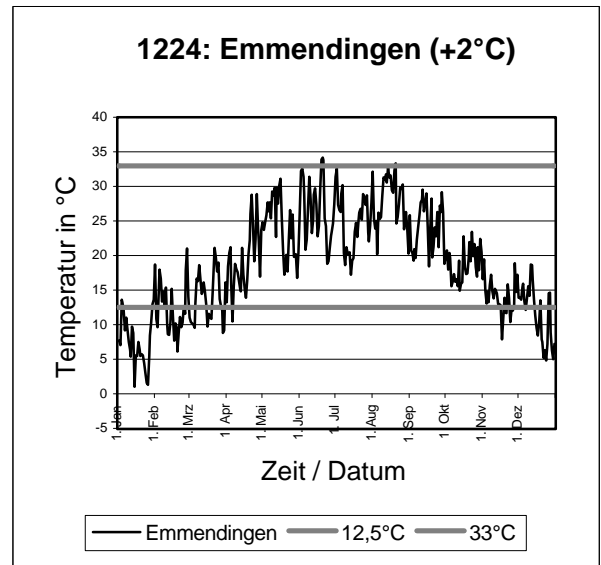
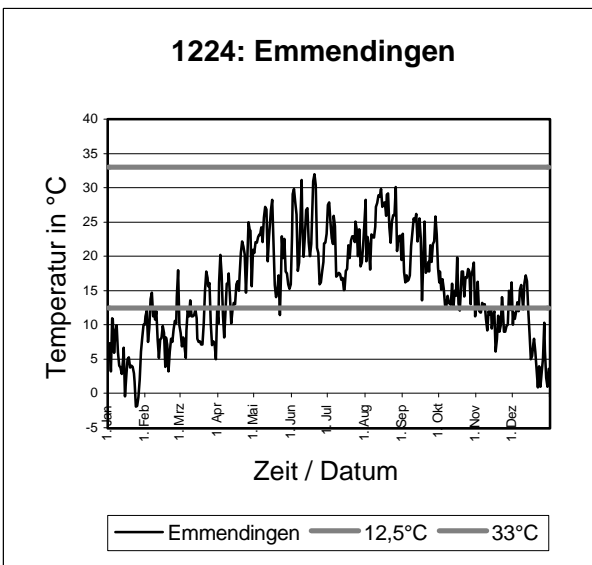
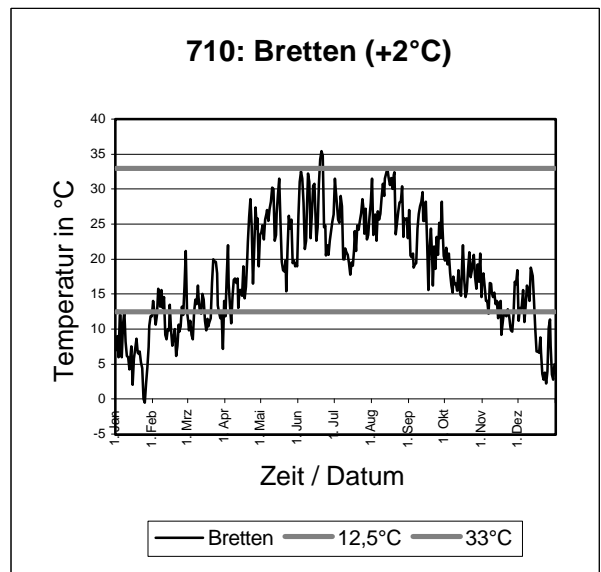
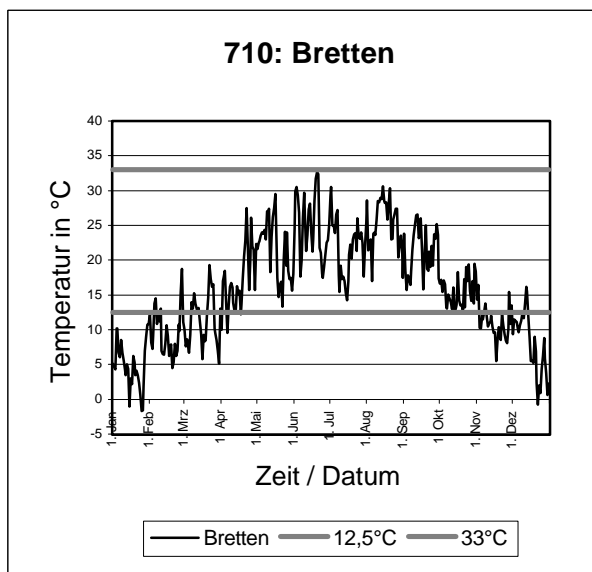
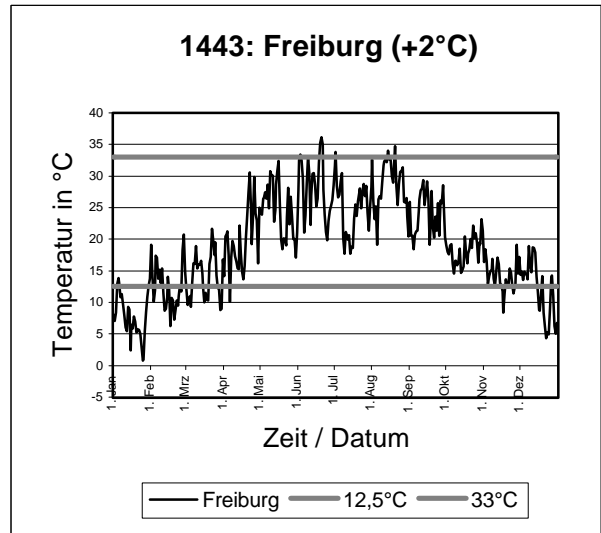
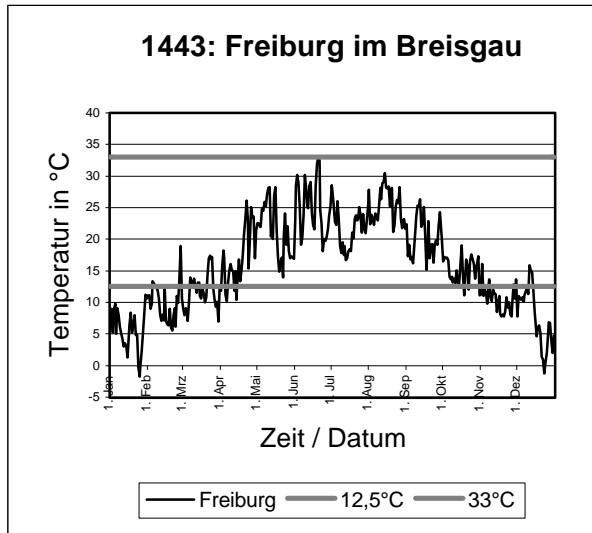


Abbildung 17

Abb. 18: Projizierte Erwärmung im Juni 2000 / + 2° C in drei der wärmsten Orte Deutschlands

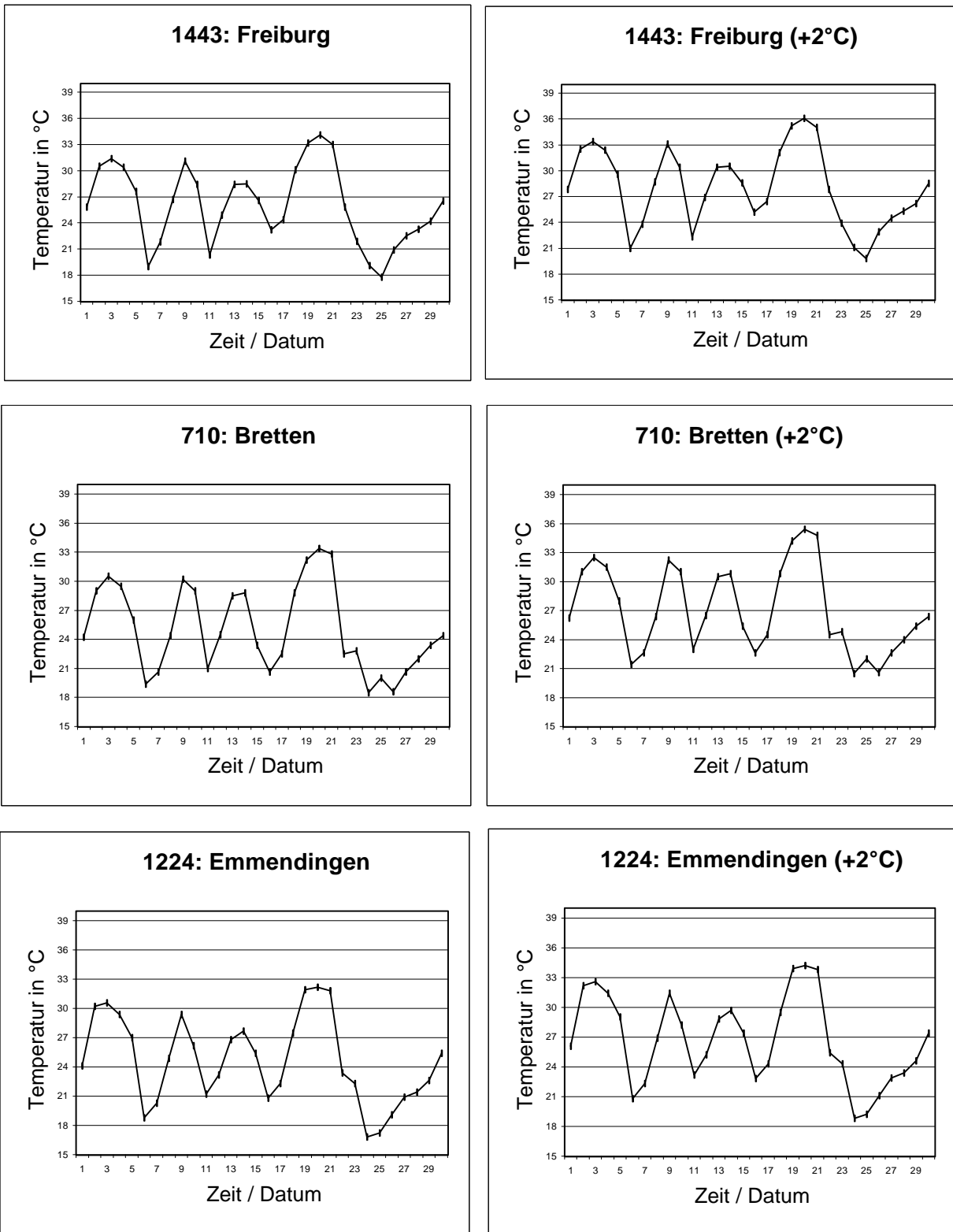


Abbildung 18