

ORIGINAL RESEARCH

Open Access



Impact of the size of the normal database on the performance of the specific binding ratio in dopamine transporter SPECT

Helen Schmitz-Steinkrüger^{1†}, Catharina Lange^{2*†} , Ivayla Apostolova¹, Holger Amthauer², Wencke Lehnert¹, Susanne Klutmann¹ and Ralph Buchert^{1*}

* Correspondence: catharina.lange@charite.de; r.buchert@uke.de

[†]Helen Schmitz-Steinkrüger and Catharina Lange contributed equally to this work.

²Department of Nuclear Medicine, Charité - Universitätsmedizin Berlin, Corporate Member of Freie Universität Berlin, Humboldt-Universität zu Berlin, and Berlin Institute of Health, Berlin, Germany

¹Department for Diagnostic and Interventional Radiology and Nuclear Medicine, University Hospital Hamburg-Eppendorf, Hamburg, Germany

Abstract

Background: This study investigated the impact of the size of the normal database on the classification performance of the specific binding ratio (SBR) in dopamine transporter (DAT) SPECT with [¹²³I]FP-CIT in different settings.

Methods: The first subject sample comprised 645 subjects from the Parkinson's Progression Marker Initiative (PPMI), 207 healthy controls (HC), and 438 Parkinson's disease (PD) patients. The second sample comprised 372 patients from clinical routine patient care, 186 with non-neurodegenerative parkinsonian syndrome (PS) and 186 with neurodegenerative PS. Single-photon emission computed tomography (SPECT) images of the clinical sample were reconstructed with two different reconstruction algorithms (filtered backprojection, iterative ordered subsets expectation maximization (OSEM) reconstruction with resolution recovery). The putaminal specific binding ratio (SBR) was computed using an anatomical region of interest (ROI) predefined in standard (MNI) space in the Automated Anatomic Labeling (AAL) atlas or using hottest voxels (HV) analysis in large predefined ROIs. SBR values were transformed to z-scores using mean and standard deviation of the SBR in a normal database of varying sizes ($n = 5, 10, 15, \dots, 50$) randomly selected from the HC subjects (PPMI sample) or the patients with non-neurodegenerative PS (clinical sample). Accuracy, sensitivity, and specificity for identifying patients with PD or neurodegenerative PS were determined as performance measures using a predefined fixed cutoff on the z-score. This was repeated for 10,000 randomly selected normal databases, separately for each size of the normal database. Mean and 5th percentile of the performance measures over the 10,000 realizations were computed. Accuracy, sensitivity, and specificity when using the whole set of HC or non-neurodegenerative PS subjects as normal database were used as benchmark.

(Continued on next page)

(Continued from previous page)

Results: Mean loss of accuracy of the putamen SBR z-score was below 1% when the normal database included at least 15 subjects, independent of subject sample (PPMI or clinical), reconstruction method (filtered backprojection or OSEM), and ROI method (AAL or HV). However, the variability of the accuracy of the putamen SBR z-score decreased monotonically with increasing size of normal database and was still considerable at size 15. In order to achieve less than 5% “maximum” loss of accuracy (defined by the 5th percentile) in all settings required at least 25 to 30 subjects in the normal database. Reduction of mean and “maximum” loss of accuracy of the putamen SBR z-score by further increasing the size of the normal database was very small beyond size 40.

Conclusions: The results of this study suggest that 25 to 30 is the minimum size of the normal database to reliably achieve good performance of semi-quantitative analysis in dopamine transporter (DAT) SPECT, independent of the algorithm used for image reconstruction and the ROI method used to estimate the putaminal SBR.

Keywords: Dopamine transporter, SPECT, FP-CIT, Specific binding ratio, Normal database

Introduction

Single-photon emission computed tomography (SPECT) with N- ω -fluoropropyl-2 β -carbomethoxy-3 β -(4-I-123-iodophenyl)nortropane (FP-CIT) is widely used for the detection (or exclusion) of nigrostriatal degeneration in clinically uncertain parkinsonian syndromes (PS) [1–4]. Visual reading of the FP-CIT SPECT images can be complemented by semi-quantitative analysis using the specific binding ratio (SBR) to characterize FP-CIT binding to the dopamine transporter (DAT) in the striatum and striatal subregions [5–10].

SBR analysis is sensitive to site- and/or camera-specific variability of SPECT image characteristics caused by differences in acquisition and reconstruction protocols, which limits sharing of normal databases and SBR cutoff values between sites and/or cameras [5, 11–18]. In prospective studies, this problem can be addressed by harmonization of acquisition protocols and centralized image reconstruction in an imaging core lab [15–17, 19]. This is difficult to realize in everyday clinical patient care so that the use of a camera-specific normal database often is the most straightforward solution in clinical routine. This is facilitated by the fact that generation of a camera-specific normal database does not necessarily require prospective scanning of healthy subjects. FP-CIT SPECT images from patients with clinically uncertain PS that have been interpreted normal in clinical routine might be used retrospectively for the normal database.

This raises the question about the impact of the size of the normal database on the performance of semi-quantitative analysis. Of particular interest is the minimum size of the normal database required for good performance of SBR analysis.

More complex methods including convolutional neural networks have been proposed for automatic classification of FP-CIT SPECT [18, 20, 21]. However, conventional SBR analysis is still widely used because it is easy to understand (no black box) and achieves high accuracy provided that an appropriate normal database is used. Furthermore, more complex methods such as convolutional neural networks usually require considerably larger databases for training and validation than univariate SBR analysis. Thus, SBR analysis most likely will continue to play a role in FP-CIT SPECT in the future.

The aim of the present study, therefore, was to analyze the impact of the size of the normal database on the performance of SBR analysis of FP-CIT SPECT in different settings, that is, for two different patient samples, two different reconstruction algorithms, and two different region-of-interest (ROI) methods to estimate the SBR.

Materials and methods

Parkinson's Progression Markers Initiative (PPMI) sample

The first sample of FP-CIT SPECT images used in this study was obtained from the PPMI (<http://www.ppmi-info.org/data>) [19]. It comprised the baseline FP-CIT scans of 645 FP-subjects, 207 healthy control (HC) subjects and 438 Parkinson's disease (PD) patients. Up-to-date information on the PPMI is given at <http://www.ppmi-info.org>. The PPMI is a longitudinal, multi-center study that aims to assess the progression of clinical features, imaging, and biologic markers in patients with PD and HC subjects. Details of the PPMI eligibility criteria are given at <http://www.ppmi-info.org/wp-content/uploads/2014/01/PPMI-AM7-Protocol.pdf>. Details of the PPMI FP-CIT SPECT protocol are given at <http://www.ppmi-info.org/study-design/research-documents-and-sops/> [19]. Raw projection data had been transferred to the PPMI imaging core lab for central image reconstruction using an iterative ordered subsets expectation maximization (OSEM) algorithm with eight iterations and eight subsets and no filtering on a Hermes workstation [22]. Post-reconstruction attenuation correction according to Chang [23] had been performed using a site-specific attenuation coefficient derived from phantom measurements performed during site initiation for the PPMI [24]. A three-dimensional Gaussian filter with 6-mm full width at half maximum had been applied after attenuation correction [24]. No scatter correction had been performed [22].

Clinical sample

Three-hundred-and-seventy-two patients from routine clinical patient care were recruited retrospectively from the database of the University Medical Center Hamburg-Eppendorf. The patients were categorized into "neurodegenerative PS" and "non-neurodegenerative PS". The neurodegenerative group ($n = 186$, 45.7% females, 65.9 ± 10.4 years) comprised the Lewy body disease spectrum including PD, PD dementia and dementia with Lewy bodies, and atypical Parkinsonian syndromes including multiple systems atrophy, progressive supranuclear palsy, and corticobasal degeneration. The non-neurodegenerative group ($n = 186$, 52.2% females, 65.5 ± 12.5 years) comprised essential tremor, drug-induced parkinsonism, several types of dystonia, psychogenic parkinsonism, and various other diagnoses not associated with nigrostriatal degeneration. The clinical diagnoses as standard of truth were taken from the written report of a movement disorder specialist in the patient's file at least 12 months after FP-CIT SPECT in all 186 patients with neurodegenerative PS (mean follow-up 41 ± 22 months, range 12–95 months) and in 44 of the patients with non-neurodegenerative PS (mean follow-up 38 ± 22 months, 13–97 months). The remaining patients with non-neurodegenerative PS had less than 12 months follow-up and were included to increase sample size and to avoid imbalance with respect to group size (neurodegenerative versus non-neurodegenerative).

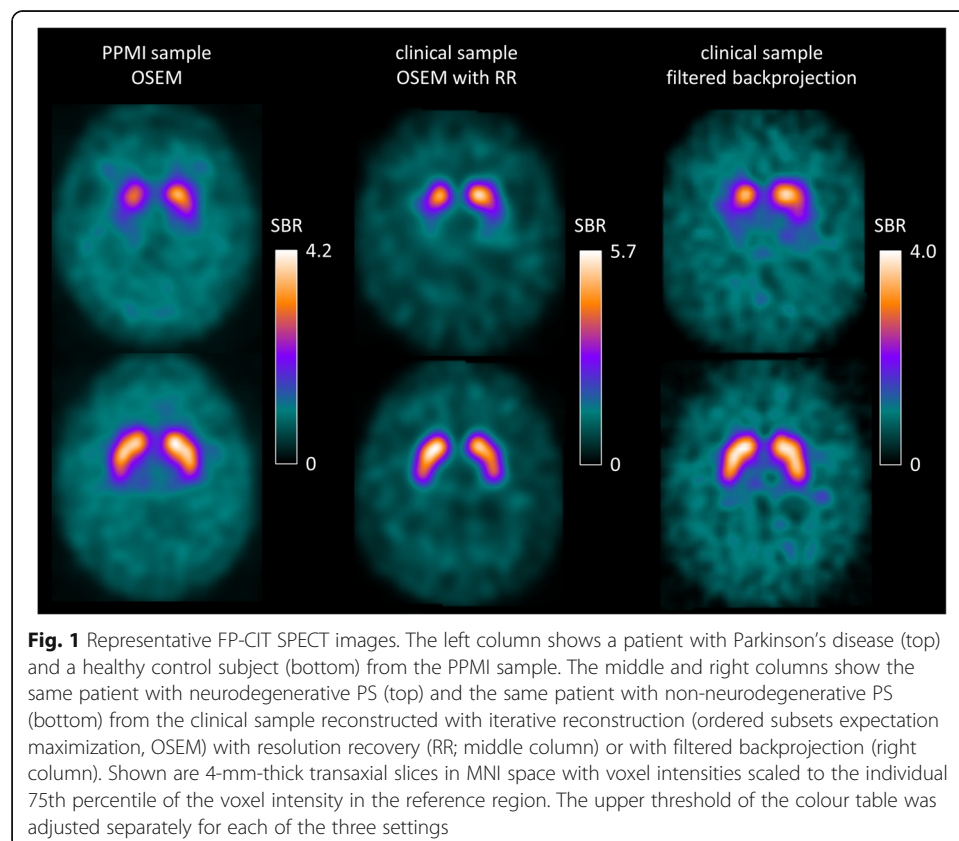
FP-CIT SPECT had been performed according to common guidelines [25] with a double-head SPECT system (Siemens Symbia T2 or Siemens E.CAM). In order to

ensure consistent image reconstruction in all patients, projection data were retrieved from the archive and reconstructed retrospectively. Two different reconstruction algorithms were used in all patients. First, SPECT images were reconstructed using filtered backprojection implemented in the SPECT system software (Butterworth filter of the 5th order with cutoff 0.6 cycles/pixel). Uniform post reconstruction attenuation correction was performed according to Chang's method ($\mu = 0.12/\text{cm}$) [23]; scatter correction was not performed. Second, SPECT images were reconstructed using the OSEM algorithm with resolution recovery implemented in the HybridRecon-Neurology tool of the Hermes SMART workstation v1.6 with parameter settings recommended for FP-CIT SPECT by Hermes (effective number of iterations 80, postfiltering with three-dimensional Gaussian kernel of 7-mm full width at half maximum, uniform attenuation correction with narrow-beam attenuation coefficient 0.146/cm, simulation-based scatter correction, resolution recovery with a Gaussian model).

Representative FP-CIT SPECT images from the different settings are shown in Fig. 1.

Semi-quantitative SBR analysis

Individual SPECT images were normalized (affine) to a custom-made FP-CIT template in the anatomical space of the Montreal Neurological Institute (MNI) using the Statistical Parametric Mapping software package (version SPM12) [26]. Voxel intensities were scaled voxel-wise to the 75th percentile of the voxel intensity in a reference region



comprising the whole brain except the striata, thalamus, brain stem, and ventricles [27, 28].

The conventional unilateral putamen SBR was computed by applying anatomical ROIs predefined in MNI space by the Automatic Anatomical Labeling atlas (AAL) [29]. The mean value of the scaled voxel intensity in the AAL ROI was used to calculate the conventional SBR (= mean scaled voxel intensity in the ROI - 1).

In addition, hottest voxels (HV) analysis was performed using large unilateral ROIs predefined in MNI space [30]. The ROIs for HV analysis were much bigger than the actual putamen volume in order to guarantee that all counts originating from the putamen were included. The number of hottest voxels to be averaged for the unilateral putamen was fixed to a volume of 10 ml. The hottest voxel SBR (HV-SBR) was calculated as mean scaled voxel intensity in the 10-ml hottest ROI voxels - 1.

SBR analysis was restricted to the putamen, and the minimum of the unilateral putamen SBR of left and right hemispheres was used in all further analyses. The rationale for this was that the effect size of the reduction in PD in general is larger in the bilateral putamen compared to the bilateral caudate, and larger in the contralateral putamen compared to the ipsilateral putamen [31]. Other conventional semi-quantitative parameters such as putamen-to-caudate ratio and left-right asymmetry were not considered because they did not provide additional information beyond the putamen SBR (Appendix).

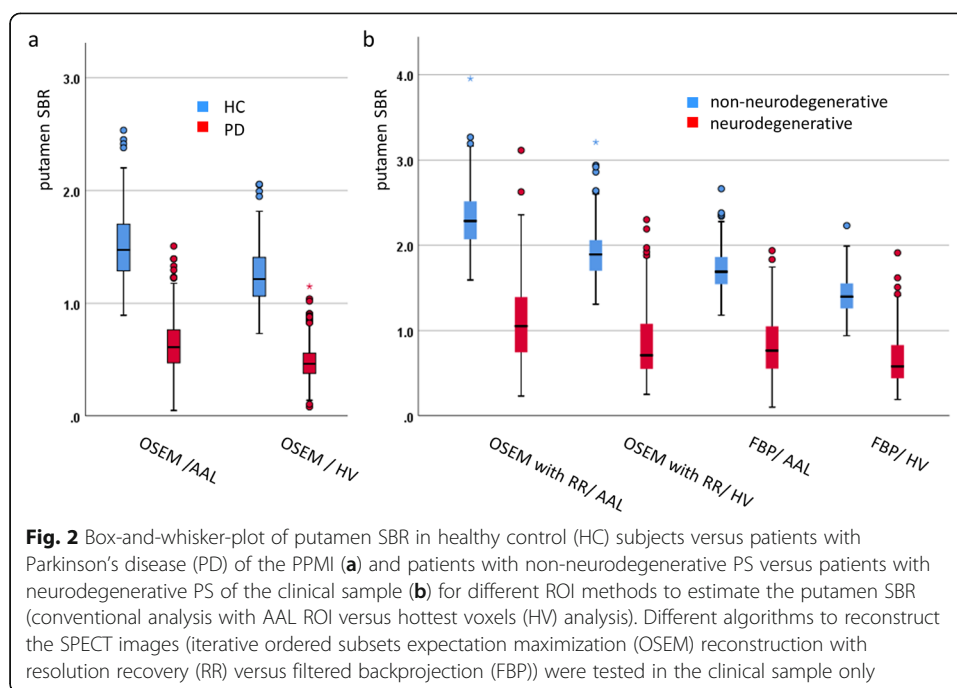
Statistical analysis

Normal databases of sizes $n = 5, 10, 15, \dots, 50$ were obtained by randomly selecting the appropriate number of HC subjects (in case of the PPMI sample) or patients with non-neurodegenerative PS (in case of the clinical sample). Mean and standard deviation of the SBR in the resulting normal database was used to transform individual SBR values to z-scores using the following formula: $z\text{-score} = (\text{individual SBR} - \text{mean SBR in normal database}) / \text{standard deviation of SBR in normal database}$. Overall accuracy, sensitivity, and specificity of the z-score to identify patients with PD (PPMI sample) or neurodegenerative PS (clinical sample) were computed using a z-score of -2.5 as cutoff. The whole sample was used as test set in all cases, that is, the test set comprised all 645 PPMI subjects or all 372 clinical patients, independent of the (size of) the normal database. This was repeated for 10,000 randomly selected normal databases for each size of the normal database. The mean and the 5th percentile of overall accuracy, specificity, and sensitivity were computed over the 10,000 repeats. The performance of the z-score obtained with all HC subjects or all patients with non-neurodegenerative PS as normal database was used as benchmark.

Results

Box plots of the putamen SBR for the different settings are shown in Fig. 2. The absolute value of the SBR strongly depended on the reconstruction algorithm and on the method used to estimate the SBR.

Histograms of putamen SBR in HC subjects or patients with non-neurodegenerative PS showed slightly skewed distributions, mainly due to extended tails towards high SBR values (Fig. 3). The skewness of the SBR distribution was significantly different from zero in all settings. The skewness was largest in the patients with non-neurodegenerative PS of



the clinical sample with OSEM reconstruction with resolution recovery (skewness = 0.877 and 0.908 for AAL-SBR and HV-SBR, respectively). The skewness was smallest in the patients with non-neurodegenerative PS of the clinical sample with filtered backprojection (skewness = 0.560 and 0.455 for AAL-SBR and HV-SBR, respectively). In order to account for the skewness of the SBR distributions, SBR values were Ln-transformed prior to transforming them to z-scores (Fig. 3). This was done in all settings.

Figure 4 shows the impact of the size of the normal database on overall accuracy, sensitivity, and specificity of the putamen SBR z-score to identify patients with PD in the PPMI sample or patients with neurodegenerative PS in the clinical sample.

Mean relative loss of accuracy and “maximum” relative loss of accuracy of the putamen SBR z-score for differentiation between PD patients and HC subjects of the PPMI or between patients with neurodegenerative PS and patients with non-neurodegenerative PS of the clinical sample as a function of size of the normal database are given in Fig. 5.

Discussion

Mean loss of overall accuracy of the z-score of the (Ln-transformed) putamen SBR was below 1% when the normal database included at least 15 subjects, independent of the subject sample, the reconstruction method, and the ROI method (Fig. 5a). However, the variability of accuracy, sensitivity, and specificity of the putamen SBR z-score decreased monotonically with increasing size of the normal database and was still considerable at size 15 (Fig. 4). The “maximum” loss of accuracy of the putamen SBR z-score was less than 5% when the normal database included at least 25 to 30 subjects (Fig. 5b). This suggests that a normal database for SBR analysis in DAT SPECT in clinical routine should include at least 25 to 30 subjects.

Reduction of mean and “maximum” loss of accuracy of the putamen SBR z-score by further increasing the size of the normal database was very small beyond size 40 (Fig.

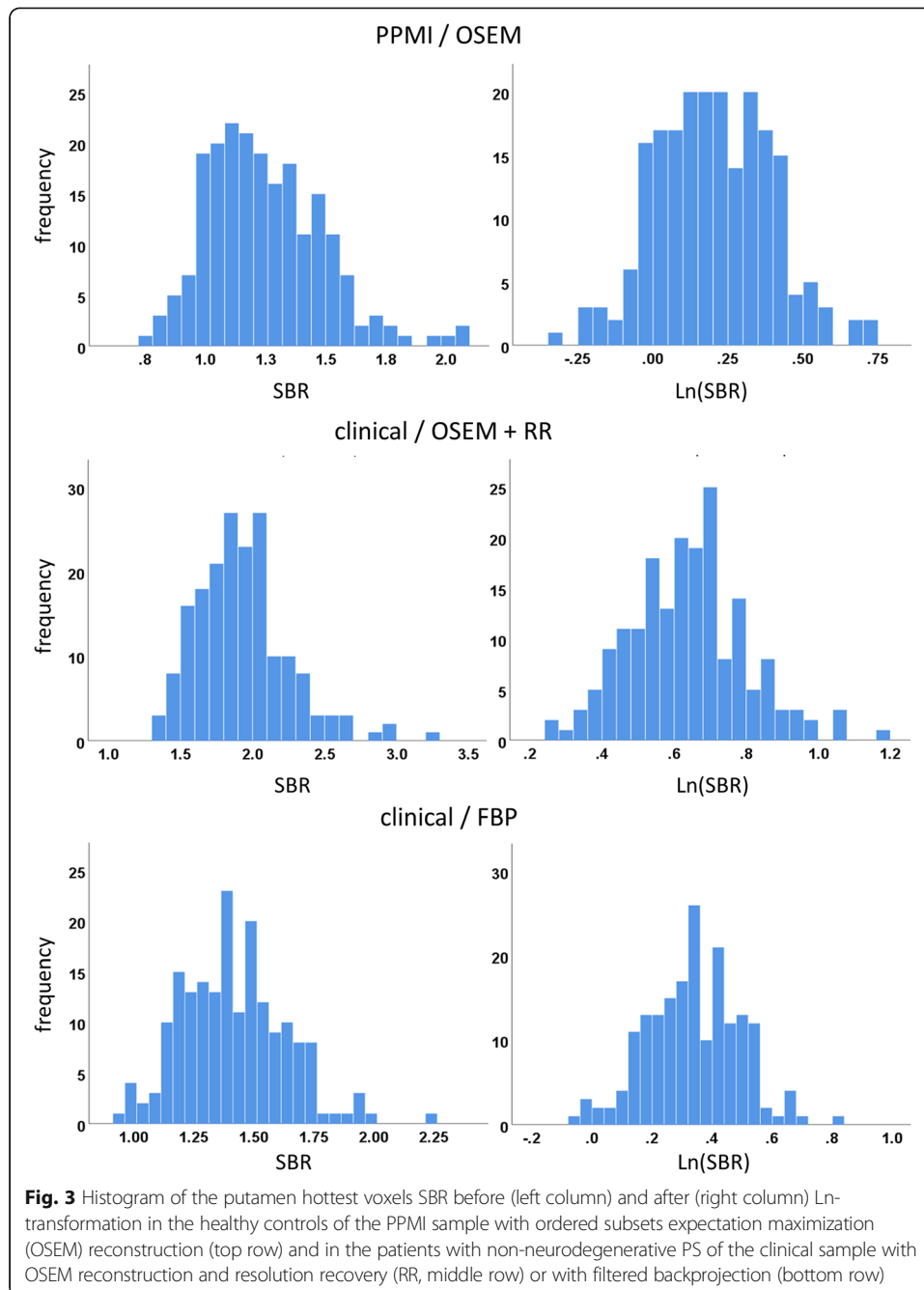


Fig. 3 Histogram of the putamen hottest voxels SBR before (left column) and after (right column) Ln-transformation in the healthy controls of the PPMI sample with ordered subsets expectation maximization (OSEM) reconstruction (top row) and in the patients with non-neurodegenerative PS of the clinical sample with OSEM reconstruction and resolution recovery (RR, middle row) or with filtered backprojection (bottom row)

5). This suggests that a normal database including 40 subjects provides close-to-optimal performance of putaminal SBR in DAT SPECT.

Sensitivity was lower than specificity in all settings (Fig. 4). This was due to the rather conservative cutoff of -2.5 on the z-score for classification of FP-CIT SPECT images. Sensitivity can be increased by using a less conservative cutoff which, however, will result in the reduction of specificity. In the absence of disease-modifying treatment for neurodegenerative PS, the trade-off between sensitivity and specificity is usually balanced in favor of high specificity in clinical routine. The use of a rather conservative cutoff in this study is in line with this.

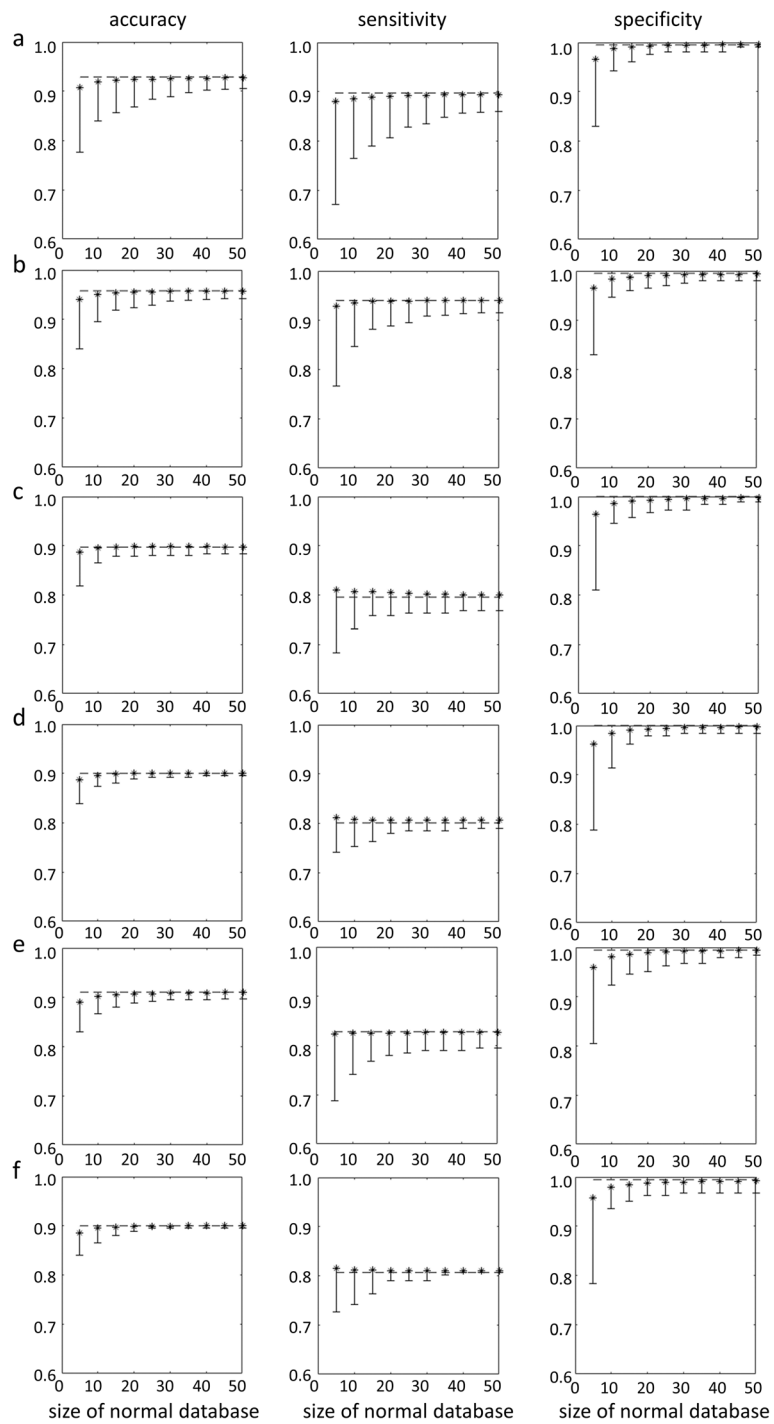
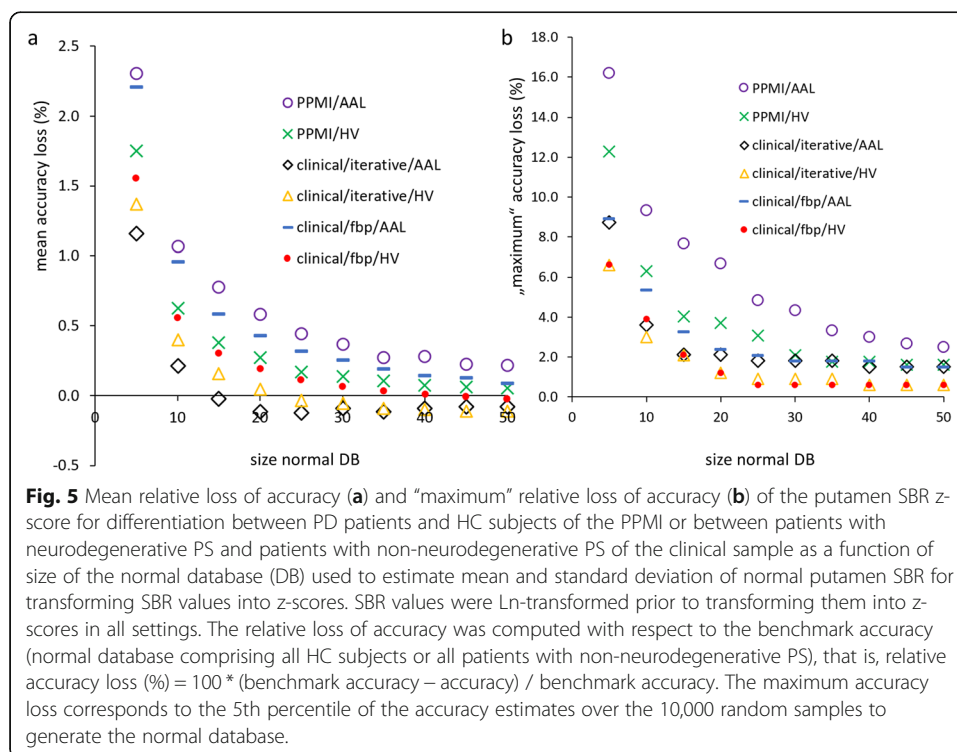


Fig. 4 (See legend on next page.)

(See figure on previous page.)

Fig. 4 Mean accuracy (left column), sensitivity (middle column), and specificity (right column) of the putamen SBR z-score for identification of PD patients or patients with neurodegenerative PS as a function of the size of the normal database used to estimate mean and standard deviation of normal putamen SBR for transforming SBR values into z-scores (**a** PPMI sample, OSEM, AAL-SBR; **b** PPMI sample, OSEM, HV-SBR; **c** clinical sample, OSEM with resolution recovery, AAL-SBR; **d** clinical sample, OSEM with resolution recovery, HV-SBR; **e** clinical sample, filtered backprojection, AAL-SBR; **f** clinical sample, filtered backprojection, HV-SBR). SBR values were Ln-transformed prior to transforming them into z-scores in all settings. The error bars indicate the difference between mean accuracy, sensitivity, or specificity and the 5th percentile over the 10,000 randomly sampled normal databases. The dashed line represents the performance of the z-score of the putamen SBR when all HC subjects ($n = 207$) or all patients with non-neurodegenerative PS ($n = 186$) were used to estimate mean and standard deviation of normal putamen SBR for transforming SBR values into z-scores as benchmark

Lower overall accuracy of the putamen SBR in the clinical sample relative to the PPMI sample was mainly driven by reduced sensitivity in the clinical sample (Fig. 4). Visual inspection of the false-negative clinical SPECT images confirmed the SBR-based classification in most cases. Thus, most of the false-negative cases in the clinical sample were subjects without evidence of dopaminergic deficit (SWEDD). Several studies suggest that the majority of SWEDD patients do not have a neurodegenerative PS [32, 33]. Reduced sensitivity of the putamen SBR in the clinical sample therefore most likely was due to clinical overdiagnosis of neurodegenerative PS at clinical follow-up used as standard of truth in this study [34]. The PPMI sample did not include SWEDD subjects, as the PPMI handles SWEDD as a separate category, different from healthy controls and PD patients (s. PPMI study protocol at <http://www.ppmi-info.org/wp-content/uploads/2018/02/PPMI-AM-13-Protocol.pdf>). The lack of SWEDD patients in the PPMI sample explains the lower sensitivity of the putamen SBR z-score in the clinical sample at least to some extent. Thus, the findings in the

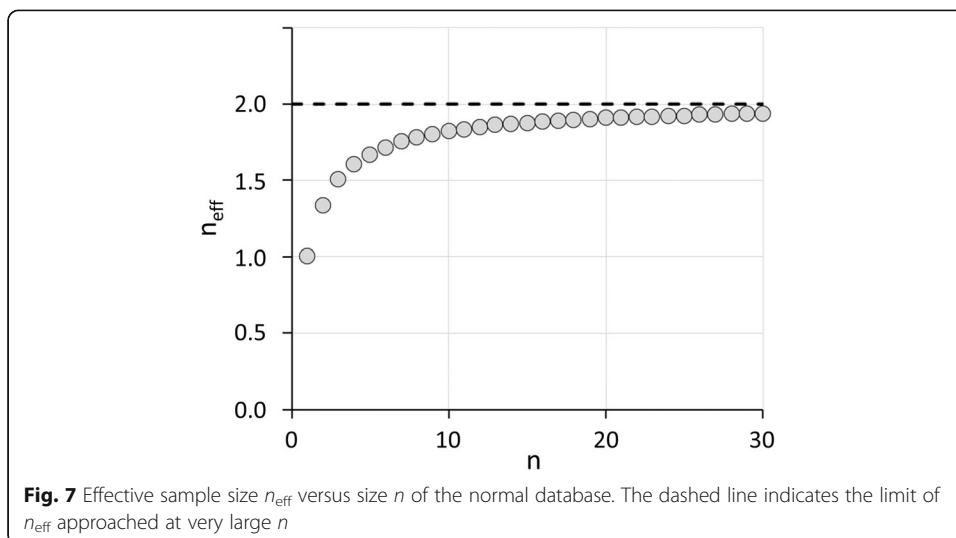
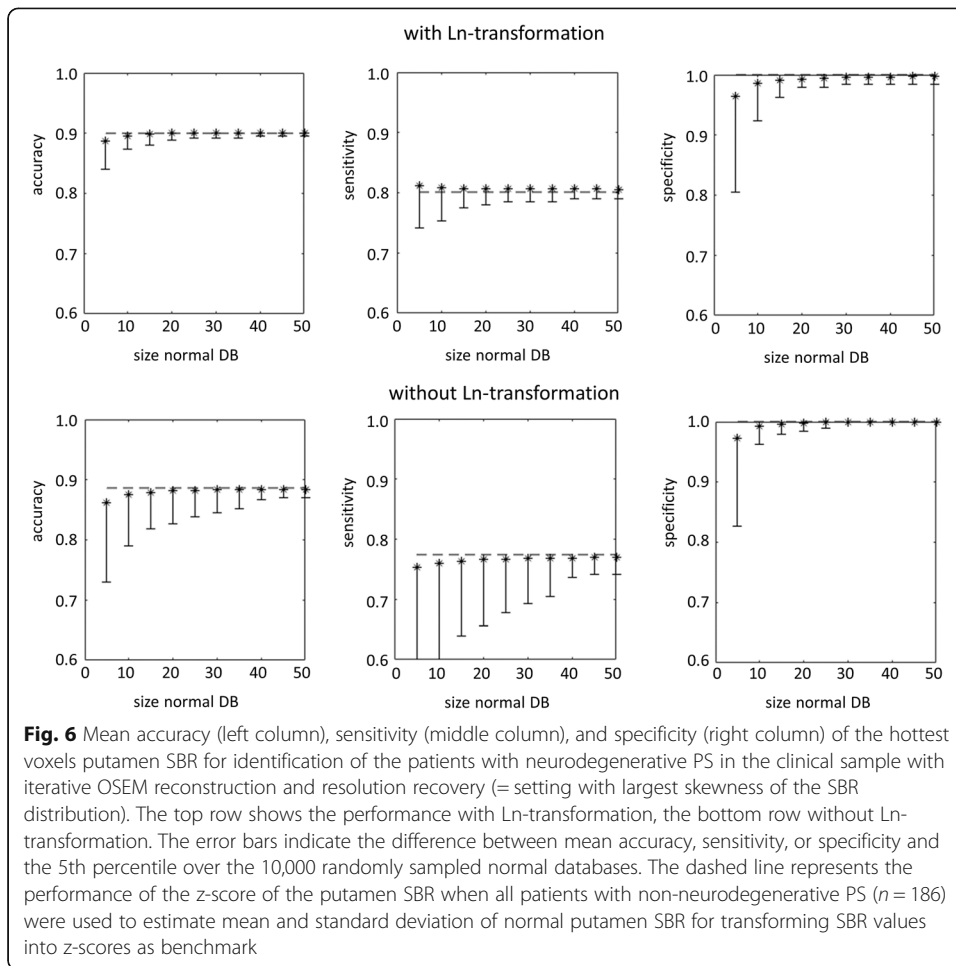


clinical sample support the use of a normal database comprised of patients with a non-neurodegenerative parkinsonian syndrome. This is practically relevant because prospective scanning of healthy subjects constitutes a major obstacle at many sites, particularly in smaller hospitals and private practices.

The findings with respect to the impact of the size of the normal database on classification performance were rather independent of the setting, that is, the findings were very similar for both subject samples (PPMI, clinical), all reconstruction algorithms (OSEM with and without resolution recovery, filtered backprojection), and both ROI methods to estimate the SBR (conventional ROI analysis, hottest voxels analysis). Given that the settings considered here are quite different (Figs. 1, 2, 3), the robustness of the results with respect to the setting suggests that these findings hold more generally in the spectrum of settings encountered in clinical routine.

A secondary finding of this study was the skewness of the distribution of the putaminal SBR in normal DAT SPECT scans that could be reduced by Ln-transformation of the SBR values (Fig. 3). Ln-transformation prior to transformation to z-scores improved the classification performance of the putamen SBR (Fig. 6). The improvement of overall accuracy was mainly driven by improved sensitivity (Fig. 6), most likely due to avoiding overestimation of the standard deviation of normal SBR from skewed distributions. The effect of the Ln-transformation was larger for the 5th percentile than for the average performance over the 10,000 random realizations of the normal database, suggesting that the main benefit from Ln-transformation was stabilization of classification performance by reducing the impact of potential outliers in the normal database. In line with this, the decline of the “maximum” performance loss with increasing size of the normal database was faster with Ln-transformation than without. As a consequence, without Ln-transformation, a larger normal database might be required to reliably achieve the same level of performance of the putamen SBR z-score than with Ln-transformation. In general, estimates of mean and standard deviation of normal putamen SBR derived from the normal database are the more sensitive to outliers the smaller the database. Thus, careful control of the DAT SPECT images to be included in the normal database is particularly important in case of a small database.

This study focused on DAT SPECT with FP-CIT. In order to discuss potential generalizability of the findings, one might hypothesize that univariable binary classification of FP-CIT SPECT, that is, differentiation between neurodegenerative and non-neurodegenerative PS using the putaminal SBR, can be considered a two-sample t-test with the single subject to be classified comprising one group and the normal database comprising the other group. Furthermore, the statistical power of testing a given feature for a mean difference between two groups of different size (n_1 , n_2) is approximately equal to the power of comparing it between two groups of equal size n_{eff} with $n_{\text{eff}} = 2 * n_1 * n_2 / (n_1 + n_2)$ [35]. Assuming this equation to be approximately valid also for the extreme case of single subject comparison against a normal database [36], that is, $n_1 = 1$ and $n_2 = n = \text{size of the normal database}$, it is $n_{\text{eff}} = 2 * n / (n + 1)$. The plot of this relation (Fig. 7) shows that n_{eff} effectively starts to reach its plateau at about $n = 10$ to $n = 15$. We hypothesize, therefore, that adequate mean accuracy of univariable binary classification in general requires a normal database of at least 10 to 15 subjects. The present finding of less than 1% mean loss of accuracy of the putamen SBR z-score when the normal database included at least 15 subjects is in line with this. Yet, the



variability of the accuracy between different realizations of the normal database can still vary considerably at this normal database size (comp. Fig. 5b). The number of additional subjects in the normal database required to achieve adequate stability of the classification performance between different realizations of the normal database depends on the between-subjects variability of the feature used for classification as well as on the mean difference of the feature between disease-positive patients and the normal database (effect size). The number of additional normal subjects required to achieve stable performance between different realizations of the normal database, therefore, is expected to depend on the application. In case of putamen SBR-based classification of FP-CIT SPECT, the number of additional normal subjects required was 10 to 15 (resulting in a total of 25 to 30 subjects in the normal database).

The following limitations of this study should be noted. First, the comparison of filtered backprojection versus iterative OSEM reconstruction was restricted to the clinical sample. The PPMI provides only FP-CIT SPECT images reconstructed with OSEM for download. Raw FP-CIT SPECT projection data for retrospective reconstruction to test other reconstruction algorithms are not available. Furthermore, the OSEM parameters differed between the PPMI sample and the clinical sample. In particular, OSEM reconstruction was performed with resolution recovery in the clinical sample and without in the PPMI sample. The rationale for this was to increase the heterogeneity among the tested settings. Second, the whole sample was used as test set in all cases. The rationale for this was to use the same test set for all sizes of the normal database in order to avoid bias by varying sizes of the test set. As a consequence, the healthy controls (PPMI sample) or the patients with non-neurodegenerative PS (clinical sample) randomly selected for the normal database were also included in the test set. This might have resulted in overly optimistic performance estimates. However, the effect is expected to be small, because the subjects in the normal database represented only a small fraction (< 13.5%) of the test set in all cases. Third, the normal database of the clinical sample was generated retrospectively from patients who had received FP-CIT SPECT for the etiological diagnosis of a clinically uncertain PS in routine patient care. The clinical diagnosis of a non-neurodegenerative etiology (not associated with nigrostriatal degeneration) as standard of truth was based on the written report of a movement disorder specialist in the patient's file after FP-CIT SPECT. The movement disorder specialist was not blinded for the FP-CIT SPECT findings. This might have caused some bias in favor of FP-CIT SPECT resulting in overly optimistic performance estimates of the putamen SBR in the clinical sample. The potential bias is not expected to affect the evaluation of the impact of the size of the normal database on the performance of the putamen SBR. Fourth, this study used conversion to z-scores and a fixed, predefined cutoff on the z-score for SBR-based classification of FP-CIT SPECT. Other methods to define a cutoff such as receiver operating characteristic (ROC) analysis require a database of patients with nigrostriatal degeneration in addition to a normal database. The impact of the sizes of the two databases (without and with nigrostriatal degeneration) on SBR classification performance using cutoffs derived from ROC analysis might be addressed in future studies. Fifth, neither age nor gender were taken into account in this study, although there is strong evidence for age related decline of striatal DAT availability [37] and moderate evidence for higher striatal DAT availability in females compared to males [38–40]. However, so far no studies have been published that clearly demonstrate

that age- and/or gender-correction of the putaminal FP-CIT SBR improves its diagnostic performance [41]. Finally, normal databases of FP-CIT SPECT from healthy control subjects were used for the PPMI settings, whereas normal databases composed of visually normal FP-CIT SPECT from patients with non-neurodegenerative PS were used for the clinical settings. Nevertheless, the present study did not allow testing the impact of the type of the normal database (healthy control subjects versus patients with Parkinsonism but visually normal FP-CIT SPECT) on the performance of semi-quantitative analysis in FP-CIT SPECT. This would require two normal databases for the same setting, one comprised of healthy controls, the other comprised of patients with non-neurodegenerative PS.

Conclusion

In conclusion, the results of this study suggest that 25 to 30 is the minimum size of the normal database to reliably achieve good performance of semi-quantitative analysis in DAT SPECT, independent of the algorithm used for image reconstruction and the ROI method used to estimate the putaminal SBR. Increasing the size of the normal database beyond 40 provides only very small further improvement.

Appendix: Other conventional semi-quantitative parameters did not provide additional information beyond putaminal DAT availability

The following other conventional semi-quantitative parameters were tested for identification of patients with neurodegenerative PS in the clinical sample (with filtered back-projection) using receiver operating characteristic (ROC) analysis: minimum of left and right caudate SBR, minimum of left and right putamen-to-caudate SBR ratio, left-right asymmetry of putamen SBR ($= 200 * \text{abs}(\text{left} - \text{right}) / (\text{left} + \text{right})$), and left-right asymmetry of caudate SBR. The clinical sample was used for this purpose in order to avoid the ceiling effect in the PPMI sample (due to very good performance of the putaminal SBR alone in the PPMI sample).

The area under the ROC curve was significantly smaller for each of the other conventional semi-quantitative parameters than for the (minimum of left and right) putamen SBR (0.953 ± 0.011): 0.932 ± 0.012 (DeLong $p = 0.017$), 0.886 ± 0.018 ($p < 0.001$), 0.824 ± 0.023 ($p < 0.001$), and 0.730 ± 0.027 ($p < 0.001$) for caudate SBR, putamen-to-caudate SBR ratio, left-right asymmetry of putamen SBR, and left-right asymmetry of caudate SBR, respectively.

Discriminant analysis was performed in order to test whether one or more of the other parameters might provide additional diagnostic information beyond the putamen SBR.

Stepwise discriminant analysis (Wilks' method, entry $p = 0.05$, removal $p = 0.10$) did not include any of the other parameters ($p = 0.699, 0.596, 0.226, \text{ and } 0.341$ for caudate SBR, putamen-to-caudate SBR ratio, left-right asymmetry of putamen SBR, and left-right asymmetry of caudate SBR, respectively). When the analysis was forced to include all other parameters, the resulting discriminant function was as follows:

Discriminant function = $-3.741 + 3.200 * \text{putamen SBR} + 0.105 * \text{caudate SBR} + 0.622 * \text{putamen-to-caudate ratio} - 0.590 * \text{putamen asymmetry} / 100 - 0.309 * \text{caudate asymmetry} / 100$

ROC analysis of the discriminant function revealed exactly the same area under the ROC curve as for the putamen SBR alone. Thus, there was no evidence that the other conventional semi-quantitative parameters provide additional information beyond the

putaminal SBR that might improve the performance of semi-quantitative analysis of FP-CIT SPECT in the clinical sample.

This does not rule out that the other conventional semi-quantitative parameters might provide additional information beyond the putaminal SBR in other patient samples, for example, in samples with more borderline cases or a larger fraction of atypical neurodegenerative PS (multiple system atrophy, progressive supranuclear palsy, corticobasal degeneration), or in the differentiation between dementia with Lewy bodies and Alzheimer's disease [42].

Abbreviations

AAL: Automatic Anatomic Labeling; DAT: Dopamine transporter; FBP: Filtered backprojection; FP-CIT: N- ω -fluoropropyl-2 β -carbomethoxy-3 β -(4-*I*-123-iodophenyl)nortropane; HC: Healthy controls; HV: Hottest voxels; Ln: Log natural; MNI: Montreal Neurological Institute; OSEM: Ordered subsets expectation maximization; PD: Parkinson's disease; PPMI: Parkinson's Progression Marker Initiative; PS: Parkinsonian syndrome; ROI: Region of interest; RR: Resolution recovery; SBR: Specific binding ratio; SPECT: Single-photon emission computed tomography; SPM12: Statistical Parametric Mapping software package, version 12

Acknowledgements

PPMI—a public-private partnership—is funded by the Michael J. Fox Foundation for Parkinson's Research and funding partners including Abbvie, Avid Radiopharmaceuticals, Biogen, BioLegend, Bristol-Myers Squibb, GE Healthcare, Genentech, GlaxoSmithKline, Lilly, Lundbeck, Merck, Meso Scale Discovery, Pfizer, Piramal, Roche, Sanofi Genzyme, Servier, Takeda, Teva, and UCB. For up-to-date information about all of the PPMI funding partners, visit <http://www.ppmi-info.org/fundingpartners>. The authors acknowledge support from the Open Access Publication Fund of Charité – Universitätsmedizin Berlin and German Research Foundation (DFG).

Authors' contributions

HSS did the data analysis, interpretation of study results, and manuscript drafting. CL did the data analysis, interpretation of study results, and manuscript drafting. IA did the data acquisition, interpretation of study results, and substantial revision of manuscript. HA did the interpretation of study results and substantial revision of manuscript. WL did the interpretation of study results and substantial revision of manuscript. SK did the data acquisition, interpretation of study results, and substantial revision of manuscript. RB did the study concept and design, data acquisition, data analysis, interpretation of study results, and manuscript drafting. The authors read and approved the final manuscript.

Funding

None

Availability of data and materials

The datasets supporting the conclusions of this article can be made available on request.

Ethics approval and consent to participate

Waiver of informed consent for the retrospective analysis of the clinical sample was obtained from the ethics review board of the general medical council of the state of Hamburg, Germany. All procedures performed in this study were in accordance with the ethical standards of the ethics review board of the general medical council of the state of Hamburg, Germany, and with the 1964 Helsinki declaration and its later amendments.

Consent for publication

There is no actual or potential conflict of interest for any of the authors.

Competing interests

The authors declare that they have no competing interests.

Received: 26 February 2020 Accepted: 5 May 2020

Published online: 20 May 2020

References

1. Booi J, Speelman JD, Horstink MW, Wolters EC. The clinical benefit of imaging striatal dopamine transporters with [123 I]FP-CIT SPET in differentiating patients with presynaptic parkinsonism from those with other forms of parkinsonism. *Eur J Nucl Med*. 2001;28:266–72.
2. Darcourt J, Booi J, Tatsch K, Varrone A, Vander Borght T, Kapucu OL, et al. EANM procedure guidelines for brain neurotransmission SPECT using (123)I-labelled dopamine transporter ligands, version 2. *Eur J Nucl Med Mol Imaging*. 2010;37:443–50. <https://doi.org/10.1007/s00259-009-1267-x>.
3. Tatsch K, Poepperl G. Nigrostriatal dopamine terminal imaging with dopamine transporter SPECT: an update. *J Nucl Med*. 2013;54:1331–8. <https://doi.org/10.2967/jnumed.112.105379>.
4. Van Laere K, Everaert L, Annemans L, Goncse M, Vandenberghe W, Vander BT. The cost effectiveness of 123 I-FP-CIT SPECT imaging in patients with an uncertain clinical diagnosis of parkinsonism. *European journal of nuclear medicine and molecular imaging*. 2008;35:1367–76. <https://doi.org/10.1007/s00259-008-0777-2>.

5. Tossici-Bolt L, Dickson JC, Sera T, Booi J, Asenbaun-Nan S, Bagnara MC, et al. [¹²³I]FP-CIT ENC-DAT normal database: the impact of the reconstruction and quantification methods. *EJNMMI Phys*. 2017;4:8. doi:10.1186/s40658-017-0175-6.
6. Soderlund TA, Dickson JC, Prvulovich E, Ben-Haim S, Kemp P, Booi J, et al. Value of semiquantitative analysis for clinical reporting of [¹²³I]-2-beta-carbomethoxy-3beta-(4-iodophenyl)-N-(3-fluoropropyl)nortropane SPECT studies. *J Nucl Med*. 2013;54:714–22. <https://doi.org/10.2967/jnumed.112.110106>.
7. Badiavas K, Molyvda E, Iakovou I, Tsolaki M, Psarrakos K, Karatzas N. SPECT imaging evaluation in movement disorders: far beyond visual assessment. *Eur J Nucl Med Mol Imaging*. 2011;38:764–73. <https://doi.org/10.1007/s00259-010-1664-1>.
8. Tatsch K, Poepperl G. Quantitative approaches to dopaminergic brain imaging. *Q J Nucl Med Mol Imaging*. 2012;56:27–38.
9. Oliveira FPM, Faria DB, Costa DC, Castelo-Branco M, Tavares J. Extraction, selection and comparison of features for an effective automated computer-aided diagnosis of Parkinson's disease based on [¹²³I]FP-CIT SPECT images. *European journal of nuclear medicine and molecular imaging*. 2018;45:1052–62. <https://doi.org/10.1007/s00259-017-3918-7>.
10. Nobili F, Naseri M, De Carli F, Asenbaum S, Booi J, Darcourt J, et al. Automatic semi-quantification of [¹²³I]FP-CIT SPECT scans in healthy volunteers using BasGan version 2: results from the ENC-DAT database. *European journal of nuclear medicine and molecular imaging*. 2013;40:565–73. <https://doi.org/10.1007/s00259-012-2304-8>.
11. Dickson JC, Tossici-Bolt L, Sera T, Booi J, Ziebell M, Morbelli S, et al. The impact of reconstruction and scanner characterisation on the diagnostic capability of a normal database for [¹²³I]FP-CIT SPECT imaging. *EJNMMI Res*. 2017;7:10. <https://doi.org/10.1186/s13550-016-0253-0>.
12. Fujita M, Varrone A, Kim KM, Watabe H, Zoghbi SS, Baldwin RM, et al. Effect of scatter correction in the measurement of striatal and extrastriatal dopamine D₂ receptors using [¹²³I]epidepride SPECT. *Journal of Nuclear Medicine*. 2001;42:217p-p.
13. Lange C, Seese A, Schwarzenbock S, Steinhoff K, Umland-Seidler B, Krause BJ, et al. CT-based attenuation correction in I-123-ioflupane SPECT. *PLoS One*. 2014;9:e108328. <https://doi.org/10.1371/journal.pone.0108328>.
14. Meyer PT, Sattler B, Lincke T, Seese A, Sabri O. Investigating dopaminergic neurotransmission with [¹²³I]-FP-CIT SPECT: comparability of modern SPECT systems. *Journal of Nuclear Medicine*. 2003;44:839–45.
15. Tossici-Bolt L, Dickson JC, Sera T, de Nijs R, Bagnara MC, Jonsson C, et al. Calibration of gamma camera systems for a multicentre European [¹²³I]-FP-CIT SPECT normal database. *Eur J Nucl Med Mol Imaging*. 2011;38:1529–40. <https://doi.org/10.1007/s00259-011-1801-5>.
16. Varrone A, Dickson JC, Tossici-Bolt L, Sera T, Asenbaum S, Booi J, et al. European multicentre database of healthy controls for [¹²³I]FP-CIT SPECT (ENC-DAT): age-related effects, gender differences and evaluation of different methods of analysis. *Eur J Nucl Med Mol Imaging*. 2013;40:213–27. <https://doi.org/10.1007/s00259-012-2276-8>.
17. Buchert R, Kluge A, Tossici-Bolt L, Dickson J, Bronzel M, Lange C, et al. Reduction in camera-specific variability in [¹²³I]FP-CIT SPECT outcome measures by image reconstruction optimized for multisite settings: impact on age-dependence of the specific binding ratio in the ENC-DAT database of healthy controls. *Eur J Nucl Med Mol Imaging*. 2016;43:1323–36. <https://doi.org/10.1007/s00259-016-3309-5>.
18. Wenzel M, Milletari F, Kruger J, Lange C, Schenk M, Apostolova I, et al. Automatic classification of dopamine transporter SPECT: deep convolutional neural networks can be trained to be robust with respect to variable image characteristics. *Eur J Nucl Med Mol Imaging*. 2019. <https://doi.org/10.1007/s00259-019-04502-5>.
19. Parkinson Progression Marker I. The Parkinson Progression Marker Initiative (PPMI). *Prog Neurobiol*. 2011;95:629–35. doi:10.1016/j.pneurobio.2011.09.005.
20. Choi H, Ha S, Im HJ, Paek SH, Lee DS. Refining diagnosis of Parkinson's disease with deep learning-based interpretation of dopamine transporter imaging. *Neuroimage Clin*. 2017;16:586–94. <https://doi.org/10.1016/j.nicl.2017.09.010>.
21. Kim DH, Wit H, Thurston M. Artificial intelligence in the diagnosis of Parkinson's disease from ioflupane-123 single-photon emission computed tomography dopamine transporter scans using transfer learning. *Nucl Med Commun*. 2018;39:887–93. <https://doi.org/10.1097/MNM.0000000000000890>.
22. Taylor JC, Romanowski C, Lorenz E, Lo C, Bandmann O, Fenner J. Computer-aided diagnosis for (¹²³I)FP-CIT imaging: impact on clinical reporting. *EJNMMI Res*. 2018;8:36. <https://doi.org/10.1186/s13550-018-0393-5>.
23. Chang LT. Method for attenuation correction in radionuclide computed tomography. *IEEE T Nucl Sci*. 1978;25:638–43. doi:10.1109/Tns.1978.4329385.
24. Marek K, Chowdhury S, Siderowf A, Lasch S, Coffey CS, Caspell-Garcia C, et al. The Parkinson's progression markers initiative (PPMI) - establishing a PD biomarker cohort. *Ann Clin Transl Neurol*. 2018;5:1460–77. <https://doi.org/10.1002/acn3.644>.
25. Djang DS, Janssen MJ, Bohnen N, Booi J, Henderson TA, Herholz K, et al. SNM practice guideline for dopamine transporter imaging with [¹²³I]-ioflupane SPECT 1.0. *J Nucl Med*. 2012;53:154–163. doi:<https://doi.org/10.2967/jnumed.111.100784>.
26. Acton PD, Friston KJ. Statistical parametric mapping in functional neuroimaging: Beyond PET and fMRI activation studies. *European journal of nuclear medicine*. 1998;25(7):663–7.
27. Kupitz D, Apostolova I, Lange C, Ulrich G, Amthauer H, Brenner W, et al. Global scaling for semi-quantitative analysis in FP-CIT SPECT. *Nuklearmed-Nucl Med*. 2014;53:234–41. <https://doi.org/10.3413/Nukmed-0659-14-04>.
28. Koch W, Unterrainer M, Xiong G, Bartenstein P, Diemling M, Varrone A, et al. Extrastriatal binding of [¹²³I]FP-CIT in the thalamus and pons: gender and age dependencies assessed in a European multicentre database of healthy controls. *European journal of nuclear medicine and molecular imaging*. 2014;41:1938–46. <https://doi.org/10.1007/s00259-014-2785-8>.
29. Tzourio-Mazoyer N, Landeau B, Papatianassiou D, Crivello F, Etard O, Delcroix N, et al. Automated anatomical labeling of activations in SPM using a macroscopic anatomical parcellation of the MNI MRI single-subject brain. *Neuroimage*. 2002;15:273–89. <https://doi.org/10.1006/nimg.2001.0978>.
30. Buchert R, Lange C, Spehl TS, Apostolova I, Frings L, Jonsson C, et al. Diagnostic performance of the specific uptake size index for semi-quantitative analysis of I-123-FP-CIT SPECT: harmonized multi-center research setting versus typical clinical single-camera setting. *EJNMMI Res*. 2019;9:37. <https://doi.org/10.1186/s13550-019-0506-9>.
31. Kaasinen V, Vahlberg T. Striatal dopamine in Parkinson disease: a meta-analysis of imaging studies. *Ann Neurol*. 2017;82:873–82. <https://doi.org/10.1002/ana.25103>.
32. Erro R, Schneider SA, Stamelou M, Quinn NP, Bhatia KP. What do patients with scans without evidence of dopaminergic deficit (SWEDD) have? New evidence and continuing controversies. *J Neurol Neurosurg Ps*. 2016;87:319–23. <https://doi.org/10.1136/jnnp-2014-310256>.
33. Nicastro N, Garibotto V, Badoud S, Burkhard PR. Scan without evidence of dopaminergic deficit: a 10-year retrospective study. *Parkinsonism Relat D*. 2016;31:53–8. <https://doi.org/10.1016/j.parkrel.2016.07.002>.

34. Marshall VL, Reininger CB, Marquardt M, Patterson J, Hadley DM, Oertel WH, et al. Parkinson's disease is overdiagnosed clinically at baseline in diagnostically uncertain cases: a 3-year European multicenter study with repeat [123]FP-CIT SPECT. *Movement Disord*. 2009;24:500–8. <https://doi.org/10.1002/mds.22108>.
35. Armitage P, Berry G. *Statistical methods in medical research*. Oxford: Blackwell Science; 1998.
36. Buchert R. On the effect of sample size of the normal database on statistical power of single subject analysis. *Nuclear Medicine Communications*. 2008;29:837–. doi:DOI 10.1097/MNM.0b013e3283023f8d.
37. Karrer TM, Josef AK, Mata R, Morris ED, Samanez-Larkin GR. Reduced dopamine receptors and transporters but not synthesis capacity in normal aging adults: a meta-analysis. *Neurobiol Aging*. 2017;57:36–46. <https://doi.org/10.1016/j.neurobiolaging.2017.05.006>.
38. Best SE, Sarrel PM, Malison RT, Laruelle M, Zoghbi SS, Baldwin RM, et al. Striatal dopamine transporter availability with [123]beta-CIT SPECT is unrelated to gender or menstrual cycle. *Psychopharmacology (Berl)*. 2005;183:181–9. doi:10.1007/s00213-005-0158-5.
39. Lavalaye J, Booij J, Reneman L, Habraken JB, van Royen EA. Effect of age and gender on dopamine transporter imaging with [123]FP-CIT SPET in healthy volunteers. *Eur J Nucl Med*. 2000;27:867–9. <https://doi.org/10.1007/s002590000279>.
40. Wong KK, Muller ML, Kuwabara H, Studenski SA, Bohnen NI. Gender differences in nigrostriatal dopaminergic innervation are present at young-to-middle but not at older age in normal adults. *J Clin Neurosci*. 2012;19:183–4. <https://doi.org/10.1016/j.jocn.2011.05.013>.
41. Albert NL, Unterrainer M, Diemling M, Xiong GM, Bartenstein P, Koch W, et al. Implementation of the European multicentre database of healthy controls for [123]FP-CIT SPECT increases diagnostic accuracy in patients with clinically uncertain parkinsonian syndromes. *Eur J Nucl Med Mol I*. 2016;43:1315–22. <https://doi.org/10.1007/s00259-015-3304-2>.
42. Lloyd JJ, Petrides G, Donaghy PC, Colloby SJ, Attems J, O'Brien JT, et al. A new visual rating scale for Ioflupane imaging in Lewy body disease. *Neuroimage Clin*. 2018;20:823–9. <https://doi.org/10.1016/j.nicl.2018.09.012>.

Publisher's Note

Springer Nature remains neutral with regard to jurisdictional claims in published maps and institutional affiliations.

Submit your manuscript to a SpringerOpen[®] journal and benefit from:

- Convenient online submission
- Rigorous peer review
- Open access: articles freely available online
- High visibility within the field
- Retaining the copyright to your article

Submit your next manuscript at ► [springeropen.com](https://www.springeropen.com)
